



# Full wwPDB X-ray Structure Validation Report ⓘ

Feb 1, 2016 – 02:10 AM GMT

PDB ID : 2FZ9  
Title : Human Aldose Reductase complexed with inhibitor zopolrestat after six days soaking.  
Authors : Steuber, H.; Zentgraf, M.; Gerlach, C.; Sotriffer, C.A.; Heine, A.; Klebe, G.  
Deposited on : 2006-02-09  
Resolution : 1.60 Å(reported)

This is a Full wwPDB X-ray Structure Validation Report for a publicly released PDB entry.  
We welcome your comments at [validation@mail.wwpdb.org](mailto:validation@mail.wwpdb.org)  
A user guide is available at  
<http://wwpdb.org/validation/2016/XrayValidationReportHelp>  
with specific help available everywhere you see the ⓘ symbol.

---

The following versions of software and data (see [references ⓘ](#)) were used in the production of this report:

MolProbity : 4.02b-467  
Mogul : 1.7 (RC4), CSD as536be (2015)  
Xtriage (Phenix) : 1.9-1692  
EDS : rb-20026688  
Percentile statistics : 20151230.v01 (using entries in the PDB archive December 30th 2015)  
Refmac : 5.8.0135  
CCP4 : 6.5.0  
Ideal geometry (proteins) : Engh & Huber (2001)  
Ideal geometry (DNA, RNA) : Parkinson et al. (1996)  
Validation Pipeline (wwPDB-VP) : trunk26865

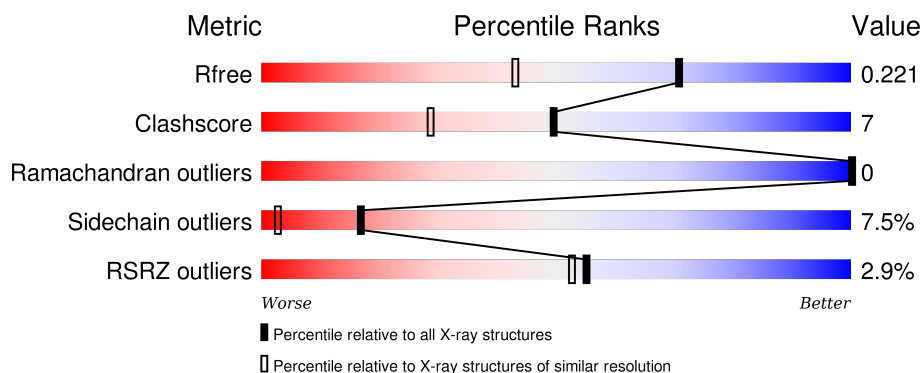
# 1 Overall quality at a glance

The following experimental techniques were used to determine the structure:

## *X-RAY DIFFRACTION*


The reported resolution of this entry is 1.60 Å.

Percentile scores (ranging between 0-100) for global validation metrics of the entry are shown in the following graphic. The table shows the number of entries on which the scores are based.



Metric	Whole archive (#Entries)	Similar resolution (#Entries, resolution range(Å))
$R_{free}$	91344	2475 (1.60-1.60)
Clashscore	102246	2732 (1.60-1.60)
Ramachandran outliers	100387	2654 (1.60-1.60)
Sidechain outliers	100360	2653 (1.60-1.60)
RSRZ outliers	91569	2479 (1.60-1.60)

The table below summarises the geometric issues observed across the polymeric chains and their fit to the electron density. The red, orange, yellow and green segments on the lower bar indicate the fraction of residues that contain outliers for  $\geq 3$ , 2, 1 and 0 types of geometric quality criteria. A grey segment represents the fraction of residues that are not modelled. The numeric value for each fraction is indicated below the corresponding segment, with a dot representing fractions  $\leq 5\%$ . The upper red bar (where present) indicates the fraction of residues that have poor fit to the electron density. The numeric value is given above the bar.

Mol	Chain	Length	Quality of chain
1	A	316	

## 2 Entry composition [i](#)

There are 4 unique types of molecules in this entry. The entry contains 2934 atoms, of which 0 are hydrogens and 0 are deuteriums.

In the tables below, the ZeroOcc column contains the number of atoms modelled with zero occupancy, the AltConf column contains the number of residues with at least one atom in alternate conformation and the Trace column contains the number of residues modelled with at most 2 atoms.

- Molecule 1 is a protein called aldose reductase.

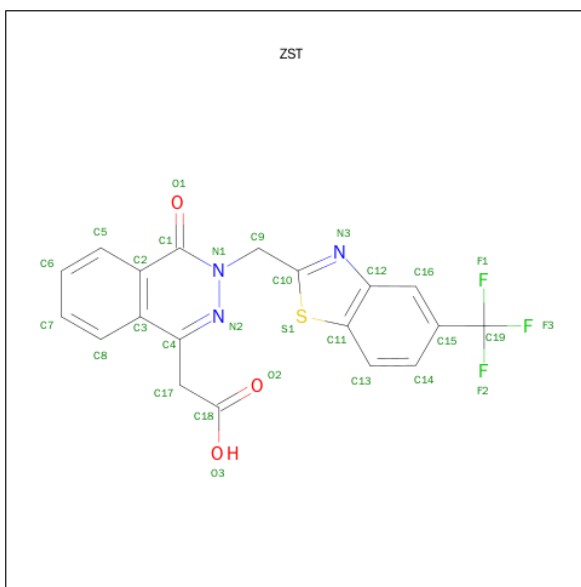
Mol	Chain	Residues	Atoms					ZeroOcc	AltConf	Trace
			Total	C	N	O	S			
1	A	315	2549	1636	429	472	12	0	8	0

- Molecule 2 is NADP NICOTINAMIDE-ADENINE-DINUCLEOTIDE PHOSPHATE (three-letter code: NAP) (formula: C<sub>21</sub>H<sub>28</sub>N<sub>7</sub>O<sub>17</sub>P<sub>3</sub>).



Mol	Chain	Residues	Atoms					ZeroOcc	AltConf
			Total	C	N	O	P		
2	A	1	48	21	7	17	3	0	0

- Molecule 3 is 3,4-DIHYDRO-4-OXO-3-((5-TRIFLUOROMETHYL-2-BENZOTHIASOLYL)METHYL)-1-PHTHALAZINE ACETIC ACID (three-letter code: ZST) (formula: C<sub>19</sub>H<sub>12</sub>F<sub>3</sub>N<sub>3</sub>O<sub>3</sub>S).



Mol	Chain	Residues	Atoms					ZeroOcc	AltConf
3	A	1	Total	C	F	N	O	S	
			29	19	3	3	3	1	0

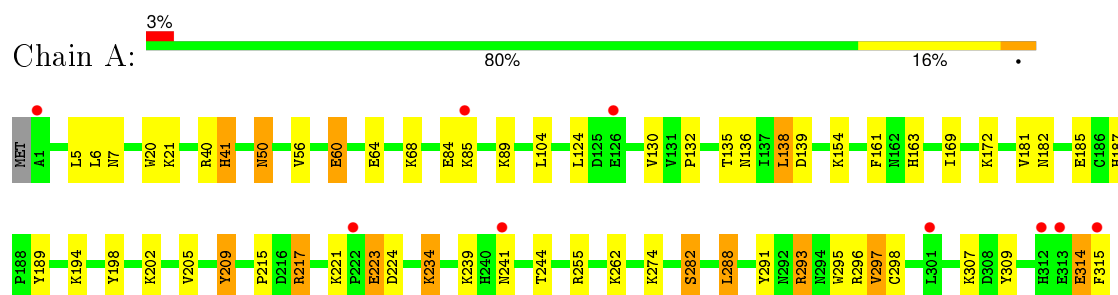
- Molecule 4 is water.

Mol	Chain	Residues	Atoms		ZeroOcc	AltConf
4	A	308	Total	O		
			308	308	0	0

### 3 Residue-property plots

These plots are drawn for all protein, RNA and DNA chains in the entry. The first graphic for a chain summarises the proportions of errors displayed in the second graphic. The second graphic shows the sequence view annotated by issues in geometry and electron density. Residues are color-coded according to the number of geometric quality criteria for which they contain at least one outlier: green = 0, yellow = 1, orange = 2 and red = 3 or more. A red dot above a residue indicates a poor fit to the electron density ( $\text{RSRZ} > 2$ ). Stretches of 2 or more consecutive residues without any outlier are shown as a green connector. Residues present in the sample, but not in the model, are shown in grey.

- Molecule 1: aldose reductase



## 4 Data and refinement statistics

Property	Value	Source
Space group	P 1 21 1	Depositor
Cell constants a, b, c, $\alpha$ , $\beta$ , $\gamma$	49.45Å 67.10Å 47.30Å 90.00° 92.43° 90.00°	Depositor
Resolution (Å)	50.00 – 1.60 21.15 – 1.60	Depositor EDS
% Data completeness (in resolution range)	80.2 (50.00-1.60) 84.5 (21.15-1.60)	Depositor EDS
$R_{merge}$	(Not available)	Depositor
$R_{sym}$	0.71	Depositor
$\langle I/\sigma(I) \rangle$ <sup>1</sup>	1.78 (at 1.60Å)	Xtriage
Refinement program	SHELXL-97	Depositor
R, $R_{free}$	0.162 , 0.223 0.165 , 0.221	Depositor DCC
$R_{free}$ test set	1712 reflections (5.23%)	DCC
Wilson B-factor (Å <sup>2</sup> )	13.8	Xtriage
Anisotropy	0.103	Xtriage
Bulk solvent $k_{sol}$ (e/Å <sup>3</sup> ), $B_{sol}$ (Å <sup>2</sup> )	0.30 , 66.4	EDS
Estimated twinning fraction	0.003 for -l,k,h 0.057 for -h,-k,l 0.041 for l,-k,h	Xtriage
L-test for twinning <sup>2</sup>	$\langle  L  \rangle = 0.49$ , $\langle L^2 \rangle = 0.32$	Xtriage
Outliers	0 of 34430 reflections	Xtriage
$F_o, F_c$ correlation	0.96	EDS
Total number of atoms	2934	wwPDB-VP
Average B, all atoms (Å <sup>2</sup> )	17.0	wwPDB-VP

Xtriage's analysis on translational NCS is as follows: *The largest off-origin peak in the Patterson function is 8.79% of the height of the origin peak. No significant pseudotranslation is detected.*

<sup>1</sup>Intensities estimated from amplitudes.

<sup>2</sup>Theoretical values of  $\langle |L| \rangle$ ,  $\langle L^2 \rangle$  for acentric reflections are 0.5, 0.375 respectively for untwinned datasets, and 0.333, 0.2 for perfectly twinned datasets.

## 5 Model quality

### 5.1 Standard geometry

Bond lengths and bond angles in the following residue types are not validated in this section: ZST, NAP

The Z score for a bond length (or angle) is the number of standard deviations the observed value is removed from the expected value. A bond length (or angle) with  $|Z| > 5$  is considered an outlier worth inspection. RMSZ is the root-mean-square of all Z scores of the bond lengths (or angles).

Mol	Chain	Bond lengths		Bond angles	
		RMSZ	$\# Z  > 5$	RMSZ	$\# Z  > 5$
1	A	0.46	0/2643	1.17	13/3588 (0.4%)

There are no bond length outliers.

All (13) bond angle outliers are listed below:

Mol	Chain	Res	Type	Atoms	Z	Observed(°)	Ideal(°)
1	A	217	ARG	NE-CZ-NH1	10.83	125.72	120.30
1	A	296	ARG	NE-CZ-NH2	8.61	124.61	120.30
1	A	209	TYR	CA-CB-CG	7.39	127.44	113.40
1	A	293[A]	ARG	NE-CZ-NH1	-6.81	116.90	120.30
1	A	293[B]	ARG	NE-CZ-NH1	-6.81	116.90	120.30
1	A	288	LEU	CA-CB-CG	6.21	129.58	115.30
1	A	217	ARG	CD-NE-CZ	6.08	132.11	123.60
1	A	309	TYR	CB-CG-CD1	-5.87	117.48	121.00
1	A	255	ARG	NE-CZ-NH2	-5.86	117.37	120.30
1	A	296	ARG	NE-CZ-NH1	-5.56	117.52	120.30
1	A	41	HIS	CA-CB-CG	5.43	122.83	113.60
1	A	309	TYR	CB-CG-CD2	5.33	124.20	121.00
1	A	40	ARG	NE-CZ-NH2	-5.31	117.64	120.30

There are no chirality outliers.

There are no planarity outliers.

### 5.2 Too-close contacts

In the following table, the Non-H and H(model) columns list the number of non-hydrogen atoms and hydrogen atoms in the chain respectively. The H(added) column lists the number of hydrogen atoms added and optimized by MolProbity. The Clashes column lists the number of clashes within the asymmetric unit, whereas Symm-Clashes lists symmetry related clashes.

Mol	Chain	Non-H	H(model)	H(added)	Clashes	Symm-Clashes
1	A	2549	0	2555	37	0
2	A	48	0	25	2	0
3	A	29	0	11	0	0
4	A	308	0	0	6	0
All	All	2934	0	2591	37	0

The all-atom clashscore is defined as the number of clashes found per 1000 atoms (including hydrogen atoms). The all-atom clashscore for this structure is 7.

All (37) close contacts within the same asymmetric unit are listed below, sorted by their clash magnitude.

Atom-1	Atom-2	Interatomic distance (Å)	Clash overlap (Å)
1:A:136[B]:ASN:HD21	1:A:138:LEU:HB2	1.25	0.99
1:A:187:HIS:HD2	1:A:189:TYR:H	1.41	0.66
1:A:136[B]:ASN:ND2	1:A:138:LEU:H	1.98	0.61
1:A:85:LYS:HE3	4:A:1130:HOH:O	2.00	0.61
1:A:194:LYS:HD3	1:A:315:PHE:CD1	2.36	0.61
1:A:282[B]:SER:HB2	4:A:1302:HOH:O	2.00	0.60
1:A:154:LYS:HE3	4:A:1277:HOH:O	2.02	0.59
1:A:5:LEU:HD13	1:A:6:LEU:O	2.04	0.58
1:A:136[A]:ASN:ND2	1:A:139:ASP:H	2.02	0.57
1:A:234:LYS:HA	1:A:244:THR:HG22	1.85	0.57
1:A:138:LEU:HG	1:A:172:LYS:HG3	1.86	0.56
1:A:20:TRP:CE3	1:A:21:LYS:HE3	2.41	0.55
1:A:217:ARG:CD	1:A:297:VAL:HG22	2.36	0.55
1:A:234:LYS:HG2	1:A:244:THR:HG21	1.89	0.55
1:A:295:TRP:CH2	1:A:297:VAL:HG23	2.43	0.53
1:A:221:LYS:O	1:A:224:ASP:HB2	2.11	0.51
1:A:185:GLU:OE2	1:A:187:HIS:HE1	1.95	0.50
1:A:161:PHE:CE2	1:A:169:ILE:HD11	2.47	0.50
1:A:291:TYR:O	1:A:293[B]:ARG:HG2	2.13	0.49
1:A:217:ARG:HD3	1:A:297:VAL:HG22	1.94	0.49
1:A:56:VAL:O	1:A:60[B]:GLU:HG3	2.15	0.47
1:A:198:TYR:CE1	1:A:202:LYS:HE2	2.51	0.46
1:A:84:GLU:HG3	1:A:135:THR:CG2	2.46	0.45
1:A:274:LYS:NZ	4:A:1096:HOH:O	2.50	0.45
1:A:89:LYS:NZ	4:A:1285:HOH:O	2.50	0.45
1:A:60[B]:GLU:HG2	4:A:1083:HOH:O	2.17	0.44
1:A:50:ASN:H	1:A:50:ASN:HD22	1.66	0.44
1:A:314:GLU:HG3	1:A:314:GLU:O	2.16	0.42
1:A:223:GLU:H	1:A:223:GLU:HG3	1.43	0.42
1:A:262:LYS:O	2:A:500:NAP:H8A	2.20	0.42

*Continued on next page...*



*Continued from previous page...*

Atom-1	Atom-2	Interatomic distance (Å)	Clash overlap (Å)
1:A:124:LEU:HD23	1:A:130:VAL:HA	2.01	0.42
1:A:314:GLU:HG2	1:A:315:PHE:HD1	1.85	0.42
1:A:84:GLU:HG3	1:A:135:THR:HG21	2.02	0.41
1:A:215:PRO:HD2	2:A:500:NAP:H4B	2.03	0.41
1:A:181:VAL:HA	1:A:205:VAL:O	2.21	0.41

There are no symmetry-related clashes.

## 5.3 Torsion angles [i](#)

### 5.3.1 Protein backbone [i](#)

In the following table, the Percentiles column shows the percent Ramachandran outliers of the chain as a percentile score with respect to all X-ray entries followed by that with respect to entries of similar resolution.

The Analysed column shows the number of residues for which the backbone conformation was analysed, and the total number of residues.

Mol	Chain	Analysed	Favoured	Allowed	Outliers	Percentiles	
1	A	321/316 (102%)	315 (98%)	6 (2%)	0	100	100

There are no Ramachandran outliers to report.

### 5.3.2 Protein sidechains [i](#)

In the following table, the Percentiles column shows the percent sidechain outliers of the chain as a percentile score with respect to all X-ray entries followed by that with respect to entries of similar resolution.

The Analysed column shows the number of residues for which the sidechain conformation was analysed, and the total number of residues.

Mol	Chain	Analysed	Rotameric	Outliers	Percentiles	
1	A	288/281 (102%)	265 (92%)	23 (8%)	15	2

All (23) residues with a non-rotameric sidechain are listed below:

Mol	Chain	Res	Type
1	A	7	ASN

*Continued on next page...*

*Continued from previous page...*

Mol	Chain	Res	Type
1	A	41	HIS
1	A	50	ASN
1	A	60[A]	GLU
1	A	60[B]	GLU
1	A	68	LYS
1	A	104	LEU
1	A	132	PRO
1	A	138	LEU
1	A	163	HIS
1	A	182	ASN
1	A	209	TYR
1	A	223	GLU
1	A	234	LYS
1	A	239	LYS
1	A	241	ASN
1	A	282[A]	SER
1	A	282[B]	SER
1	A	288	LEU
1	A	297	VAL
1	A	298	CYS
1	A	307	LYS
1	A	314	GLU

Some sidechains can be flipped to improve hydrogen bonding and reduce clashes. All (9) such sidechains are listed below:

Mol	Chain	Res	Type
1	A	7	ASN
1	A	26	GLN
1	A	41	HIS
1	A	50	ASN
1	A	93	GLN
1	A	182	ASN
1	A	187	HIS
1	A	200	GLN
1	A	283	GLN

### 5.3.3 RNA ⓘ

There are no RNA molecules in this entry.

## 5.4 Non-standard residues in protein, DNA, RNA chains ⓘ

There are no non-standard protein/DNA/RNA residues in this entry.

## 5.5 Carbohydrates ⓘ

There are no carbohydrates in this entry.

## 5.6 Ligand geometry ⓘ

2 ligands are modelled in this entry.

In the following table, the Counts columns list the number of bonds (or angles) for which Mogul statistics could be retrieved, the number of bonds (or angles) that are observed in the model and the number of bonds (or angles) that are defined in the chemical component dictionary. The Link column lists molecule types, if any, to which the group is linked. The Z score for a bond length (or angle) is the number of standard deviations the observed value is removed from the expected value. A bond length (or angle) with  $|Z| > 2$  is considered an outlier worth inspection. RMSZ is the root-mean-square of all Z scores of the bond lengths (or angles).

Mol	Type	Chain	Res	Link	Bond lengths			Bond angles		
					Counts	RMSZ	$\# Z  > 2$	Counts	RMSZ	$\# Z  > 2$
2	NAP	A	500	-	42,52,52	1.51	9 (21%)	54,80,80	1.98	10 (18%)
3	ZST	A	600	-	24,32,32	0.89	0	27,48,48	1.75	8 (29%)

In the following table, the Chirals column lists the number of chiral outliers, the number of chiral centers analysed, the number of these observed in the model and the number defined in the chemical component dictionary. Similar counts are reported in the Torsion and Rings columns. '-' means no outliers of that kind were identified.

Mol	Type	Chain	Res	Link	Chirals	Torsions	Rings
2	NAP	A	500	-	-	0/27/67/67	0/5/5/5
3	ZST	A	600	-	-	0/9/14/14	0/4/4/4

All (9) bond length outliers are listed below:

Mol	Chain	Res	Type	Atoms	Z	Observed(Å)	Ideal(Å)
2	A	500	NAP	PA-O2A	-2.10	1.46	1.54
2	A	500	NAP	C5N-C4N	2.06	1.43	1.38
2	A	500	NAP	C3B-C2B	2.07	1.57	1.53
2	A	500	NAP	O4D-C1D	2.27	1.44	1.41
2	A	500	NAP	C3N-C7N	2.29	1.54	1.50
2	A	500	NAP	C6N-N1N	2.41	1.41	1.35

*Continued on next page...*

*Continued from previous page...*

Mol	Chain	Res	Type	Atoms	Z	Observed(Å)	Ideal(Å)
2	A	500	NAP	C2A-N3A	2.84	1.37	1.32
2	A	500	NAP	C2A-N1A	3.03	1.39	1.33
2	A	500	NAP	C4A-N3A	3.19	1.40	1.35

All (18) bond angle outliers are listed below:

Mol	Chain	Res	Type	Atoms	Z	Observed(°)	Ideal(°)
2	A	500	NAP	N3A-C2A-N1A	-7.73	122.97	128.89
2	A	500	NAP	C3N-C2N-N1N	-4.23	115.49	120.36
2	A	500	NAP	O7N-C7N-C3N	-3.88	115.35	119.59
3	A	600	ZST	C14-C13-C11	-2.96	115.22	119.03
3	A	600	ZST	C16-C12-C11	-2.88	117.88	121.01
3	A	600	ZST	C15-C16-C12	-2.65	116.72	120.80
3	A	600	ZST	C14-C15-C19	-2.60	116.08	119.99
2	A	500	NAP	O3-PA-O5B	-2.27	96.91	102.94
2	A	500	NAP	O4D-C4D-C3D	-2.26	100.60	105.15
3	A	600	ZST	F2-C19-C15	2.00	117.24	112.95
2	A	500	NAP	PN-O3-PA	2.27	139.11	132.73
2	A	500	NAP	O3X-P2B-O2X	2.48	116.81	107.38
3	A	600	ZST	C5-C2-C3	2.61	121.88	118.59
3	A	600	ZST	C11-C12-N3	2.65	114.30	108.16
2	A	500	NAP	O7N-C7N-N7N	3.06	126.90	122.59
3	A	600	ZST	C14-C15-C16	4.18	124.12	117.75
2	A	500	NAP	C2N-C3N-C4N	4.34	123.13	118.29
2	A	500	NAP	C4B-O4B-C1B	4.61	114.79	109.72

There are no chirality outliers.

There are no torsion outliers.

There are no ring outliers.

1 monomer is involved in 2 short contacts:

Mol	Chain	Res	Type	Clashes	Symm-Clashes
2	A	500	NAP	2	0

## 5.7 Other polymers ⓘ

There are no such residues in this entry.

## 5.8 Polymer linkage issues ⓘ

There are no chain breaks in this entry.

## 6 Fit of model and data [i](#)

### 6.1 Protein, DNA and RNA chains [i](#)

In the following table, the column labelled ‘#RSRZ> 2’ contains the number (and percentage) of RSRZ outliers, followed by percent RSRZ outliers for the chain as percentile scores relative to all X-ray entries and entries of similar resolution. The OWAB column contains the minimum, median, 95<sup>th</sup> percentile and maximum values of the occupancy-weighted average B-factor per residue. The column labelled ‘Q< 0.9’ lists the number of (and percentage) of residues with an average occupancy less than 0.9.

Mol	Chain	Analysed	<RSRZ>	#RSRZ>2	OWAB(Å <sup>2</sup> )	Q<0.9
1	A	315/316 (99%)	-0.04	9 (2%) 55 53	7, 14, 31, 48	0

All (9) RSRZ outliers are listed below:

Mol	Chain	Res	Type	RSRZ
1	A	1	ALA	5.4
1	A	222	PRO	4.0
1	A	312	HIS	2.9
1	A	241	ASN	2.7
1	A	313	GLU	2.6
1	A	315	PHE	2.5
1	A	301	LEU	2.3
1	A	126	GLU	2.3
1	A	85	LYS	2.2

### 6.2 Non-standard residues in protein, DNA, RNA chains [i](#)

There are no non-standard protein/DNA/RNA residues in this entry.

### 6.3 Carbohydrates [i](#)

There are no carbohydrates in this entry.

### 6.4 Ligands [i](#)

In the following table, the Atoms column lists the number of modelled atoms in the group and the number defined in the chemical component dictionary. LLDF column lists the quality of electron density of the group with respect to its neighbouring residues in protein, DNA or RNA chains. The B-factors column lists the minimum, median, 95<sup>th</sup> percentile and maximum values of B factors

of atoms in the group. The column labelled 'Q< 0.9' lists the number of atoms with occupancy less than 0.9.

Mol	Type	Chain	Res	Atoms	RSCC	RSR	LLDF	B-factors( $\text{\AA}^2$ )	Q<0.9
3	ZST	A	600	29/29	0.96	0.09	0.19	7,12,25,31	0
2	NAP	A	500	48/48	0.97	0.07	-0.78	5,9,13,13	0

## 6.5 Other polymers [i](#)

There are no such residues in this entry.