



Full wwPDB X-ray Structure Validation Report ⓘ

Feb 1, 2016 – 02:13 AM GMT

PDB ID : 2G5T
Title : Crystal structure of human dipeptidyl peptidase IV (DPPIV) complexed with cyanopyrrolidine (C5-pro-pro) inhibitor 2lag
Authors : Longenecker, K.L.; Fry, E.H.; Lake, M.R.; Solomon, L.R.; Pei, Z.; Li, X.
Deposited on : 2006-02-23
Resolution : 2.30 Å(reported)

This is a Full wwPDB X-ray Structure Validation Report for a publicly released PDB entry.
We welcome your comments at validation@mail.wwpdb.org
A user guide is available at
<http://wwpdb.org/validation/2016/XrayValidationReportHelp>
with specific help available everywhere you see the ⓘ symbol.

The following versions of software and data (see [references ⓘ](#)) were used in the production of this report:

MolProbity : 4.02b-467
Mogul : 1.7 (RC4), CSD as536be (2015)
Xtriage (Phenix) : 1.9-1692
EDS : rb-20026688
Percentile statistics : 20151230.v01 (using entries in the PDB archive December 30th 2015)
Refmac : 5.8.0135
CCP4 : 6.5.0
Ideal geometry (proteins) : Engh & Huber (2001)
Ideal geometry (DNA, RNA) : Parkinson et al. (1996)
Validation Pipeline (wwPDB-VP) : trunk26865

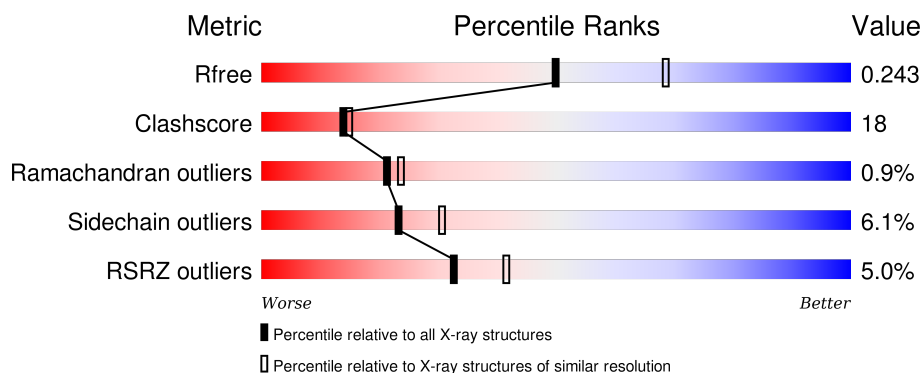
1 Overall quality at a glance

The following experimental techniques were used to determine the structure:

X-RAY DIFFRACTION

The reported resolution of this entry is 2.30 Å.

Percentile scores (ranging between 0-100) for global validation metrics of the entry are shown in the following graphic. The table shows the number of entries on which the scores are based.



Metric	Whole archive (#Entries)	Similar resolution (#Entries, resolution range(Å))
R_{free}	91344	3852 (2.30-2.30)
Clashscore	102246	4452 (2.30-2.30)
Ramachandran outliers	100387	4410 (2.30-2.30)
Sidechain outliers	100360	4409 (2.30-2.30)
RSRZ outliers	91569	3857 (2.30-2.30)

The table below summarises the geometric issues observed across the polymeric chains and their fit to the electron density. The red, orange, yellow and green segments on the lower bar indicate the fraction of residues that contain outliers for ≥ 3 , 2, 1 and 0 types of geometric quality criteria. A grey segment represents the fraction of residues that are not modelled. The numeric value for each fraction is indicated below the corresponding segment, with a dot representing fractions $\leq 5\%$. The upper red bar (where present) indicates the fraction of residues that have poor fit to the electron density. The numeric value is given above the bar.

Mol	Chain	Length	Quality of chain
1	A	726	<div> <div>5%</div> <div>67%</div> <div>29%</div> <div>.</div> </div>
1	B	726	<div> <div>5%</div> <div>66%</div> <div>30%</div> <div>.</div> </div>

The following table lists non-polymeric compounds, carbohydrate monomers and non-standard residues in protein, DNA, RNA chains that are outliers for geometric or electron-density-fit criteria:

Mol	Type	Chain	Res	Chirality	Geometry	Clashes	Electron density
2	ACF	A	800	-	-	-	X

2 Entry composition [i](#)

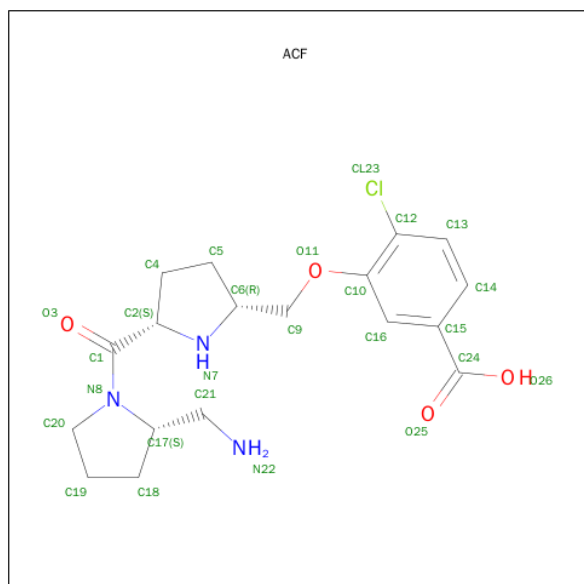
There are 3 unique types of molecules in this entry. The entry contains 13345 atoms, of which 0 are hydrogens and 0 are deuteriums.

In the tables below, the ZeroOcc column contains the number of atoms modelled with zero occupancy, the AltConf column contains the number of residues with at least one atom in alternate conformation and the Trace column contains the number of residues modelled with at most 2 atoms.

- Molecule 1 is a protein called Dipeptidyl peptidase 4.

Mol	Chain	Residues	Atoms					ZeroOcc	AltConf	Trace
1	A	726	Total	C	N	O	S	0	0	0
			5949	3816	980	1127	26			
1	B	726	Total	C	N	O	S	0	0	0
			5949	3816	980	1127	26			

- Molecule 2 is 3-{{(2R,5S)-5-{{(2S)-2-(AMINOMETHYL)PYRROLIDIN-1-YL}CARBONYL}PYRROLIDIN-2-YL}METHOXY}-4-CHLOROBENZOIC ACID (three-letter code: ACF) (formula: C₁₈H₂₄ClN₃O₄).



Mol	Chain	Residues	Atoms					ZeroOcc	AltConf
2	A	1	Total	C	Cl	N	O	0	0
			26	18	1	3	4		

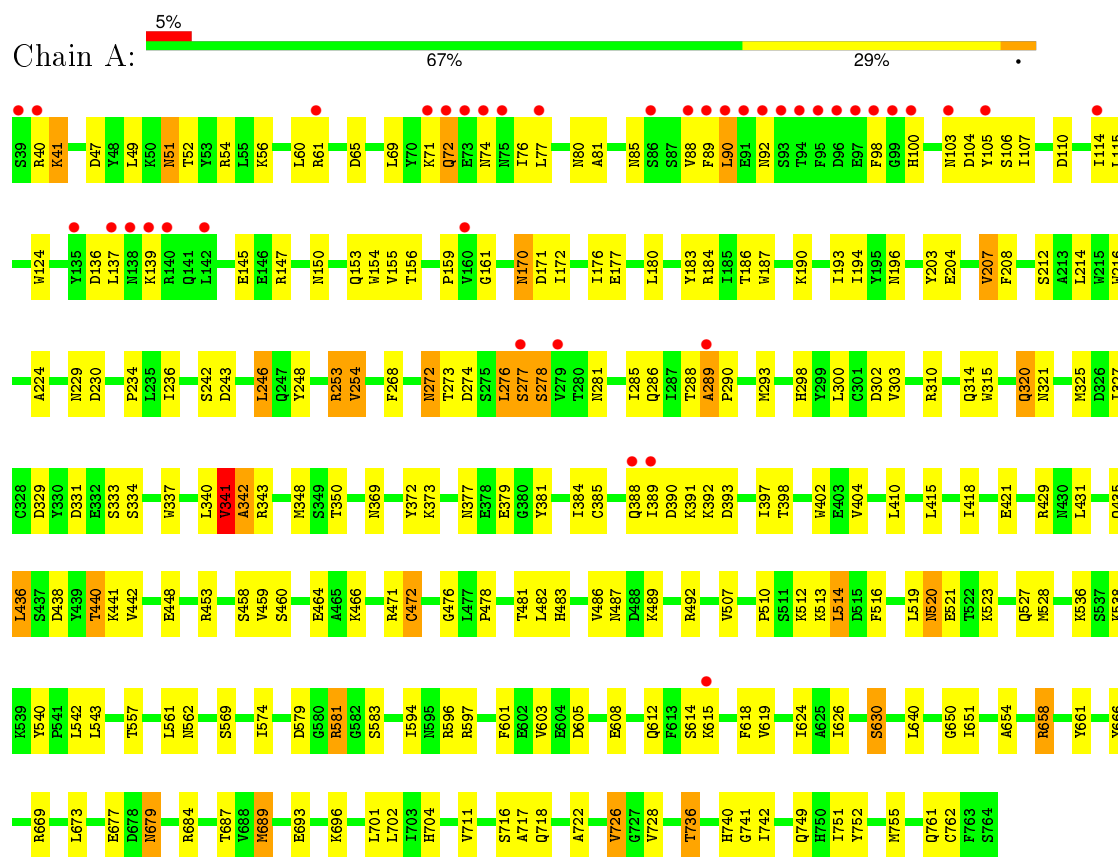
- Molecule 3 is water.

Mol	Chain	Residues	Atoms		ZeroOcc	AltConf
3	A	738	Total 738	O 738	0	0
3	B	683	Total 683	O 683	0	0

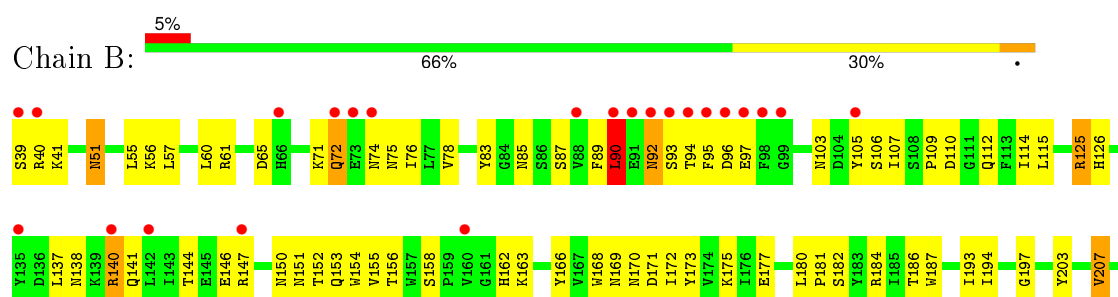
3 Residue-property plots

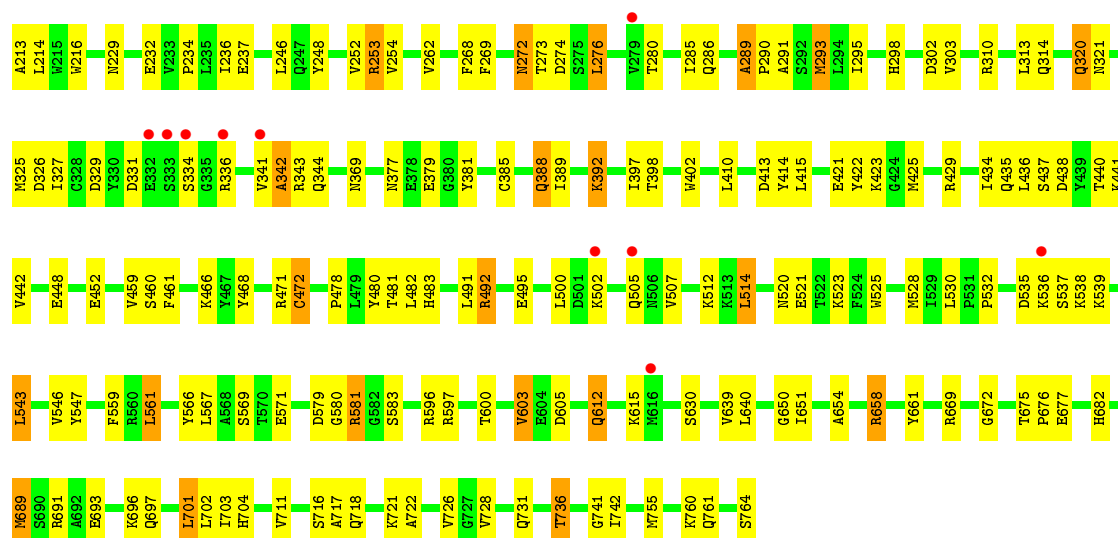
These plots are drawn for all protein, RNA and DNA chains in the entry. The first graphic for a chain summarises the proportions of errors displayed in the second graphic. The second graphic shows the sequence view annotated by issues in geometry and electron density. Residues are color-coded according to the number of geometric quality criteria for which they contain at least one outlier: green = 0, yellow = 1, orange = 2 and red = 3 or more. A red dot above a residue indicates a poor fit to the electron density ($RSRZ > 2$). Stretches of 2 or more consecutive residues without any outlier are shown as a green connector. Residues present in the sample, but not in the model, are shown in grey.

• Molecule 1: Dipeptidyl peptidase 4



• Molecule 1: Dipeptidyl peptidase 4





4 Data and refinement statistics

Property	Value	Source
Space group	P 1 21 1	Depositor
Cell constants a, b, c, α , β , γ	65.73Å 126.79Å 112.29Å 90.00° 99.49° 90.00°	Depositor
Resolution (Å)	50.00 – 2.30 48.36 – 2.30	Depositor EDS
% Data completeness (in resolution range)	93.9 (50.00-2.30) 93.9 (48.36-2.30)	Depositor EDS
R_{merge}	0.08	Depositor
R_{sym}	(Not available)	Depositor
$\langle I/\sigma(I) \rangle$ ¹	2.27 (at 2.29Å)	Xtriage
Refinement program	CNS	Depositor
R, R_{free}	0.190 , 0.243 0.190 , 0.243	Depositor DCC
R_{free} test set	3734 reflections (4.94%)	DCC
Wilson B-factor (Å ²)	29.0	Xtriage
Anisotropy	0.154	Xtriage
Bulk solvent k_{sol} (e/Å ³), B_{sol} (Å ²)	0.33 , 53.7	EDS
Estimated twinning fraction	No twinning to report.	Xtriage
L-test for twinning ²	$\langle L \rangle = 0.50$, $\langle L^2 \rangle = 0.33$	Xtriage
Outliers	0 of 75599 reflections	Xtriage
F_o, F_c correlation	0.95	EDS
Total number of atoms	13345	wwPDB-VP
Average B, all atoms (Å ²)	32.0	wwPDB-VP

Xtriage's analysis on translational NCS is as follows: *The largest off-origin peak in the Patterson function is 4.04% of the height of the origin peak. No significant pseudotranslation is detected.*

¹Intensities estimated from amplitudes.

²Theoretical values of $\langle |L| \rangle$, $\langle L^2 \rangle$ for acentric reflections are 0.5, 0.375 respectively for untwinned datasets, and 0.333, 0.2 for perfectly twinned datasets.

5 Model quality [i](#)

5.1 Standard geometry [i](#)

Bond lengths and bond angles in the following residue types are not validated in this section: ACF

The Z score for a bond length (or angle) is the number of standard deviations the observed value is removed from the expected value. A bond length (or angle) with $|Z| > 5$ is considered an outlier worth inspection. RMSZ is the root-mean-square of all Z scores of the bond lengths (or angles).

Mol	Chain	Bond lengths		Bond angles	
		RMSZ	# Z >5	RMSZ	# Z >5
1	A	0.37	1/6120 (0.0%)	0.64	1/8321 (0.0%)
1	B	0.34	0/6120	0.63	2/8321 (0.0%)
All	All	0.36	1/12240 (0.0%)	0.63	3/16642 (0.0%)

All (1) bond length outliers are listed below:

Mol	Chain	Res	Type	Atoms	Z	Observed(Å)	Ideal(Å)
1	A	630	SER	C-O	9.54	1.41	1.23

All (3) bond angle outliers are listed below:

Mol	Chain	Res	Type	Atoms	Z	Observed(°)	Ideal(°)
1	B	388	GLN	N-CA-C	-5.83	95.25	111.00
1	B	90	LEU	CA-CB-CG	5.20	127.26	115.30
1	A	300	LEU	N-CA-C	-5.01	97.47	111.00

There are no chirality outliers.

There are no planarity outliers.

5.2 Too-close contacts [i](#)

In the following table, the Non-H and H(model) columns list the number of non-hydrogen atoms and hydrogen atoms in the chain respectively. The H(added) column lists the number of hydrogen atoms added and optimized by MolProbity. The Clashes column lists the number of clashes within the asymmetric unit, whereas Symm-Clashes lists symmetry related clashes.

Mol	Chain	Non-H	H(model)	H(added)	Clashes	Symm-Clashes
1	A	5949	0	5666	219	0
1	B	5949	0	5667	213	0

Continued on next page...

Continued from previous page...

Mol	Chain	Non-H	H(model)	H(added)	Clashes	Symm-Clashes
2	A	26	0	21	1	0
3	A	738	0	0	47	0
3	B	683	0	0	42	0
All	All	13345	0	11354	428	0

The all-atom clashscore is defined as the number of clashes found per 1000 atoms (including hydrogen atoms). The all-atom clashscore for this structure is 18.

All (428) close contacts within the same asymmetric unit are listed below, sorted by their clash magnitude.

Atom-1	Atom-2	Interatomic distance (Å)	Clash overlap (Å)
1:B:114:ILE:HD11	1:B:137:LEU:HD21	1.41	1.03
1:B:289:ALA:HB1	1:B:290:PRO:HA	1.43	1.00
1:B:442:VAL:HB	3:B:1074:HOH:O	1.61	0.99
1:A:172:ILE:H	1:A:186:THR:HG22	1.30	0.96
1:B:193:ILE:HG22	1:B:194:ILE:HD12	1.47	0.94
1:B:72:GLN:N	1:B:72:GLN:HE21	1.65	0.92
1:B:172:ILE:H	1:B:186:THR:HG22	1.35	0.92
1:A:276:LEU:H	1:A:276:LEU:HD23	1.41	0.86
1:A:736:THR:HG21	1:B:717:ALA:O	1.76	0.85
1:B:289:ALA:HB1	1:B:290:PRO:CA	2.06	0.85
1:A:717:ALA:O	1:B:736:THR:HG21	1.79	0.83
1:A:289:ALA:HB1	1:A:290:PRO:HA	1.62	0.81
1:A:272:ASN:ND2	1:A:274:ASP:H	1.77	0.81
1:A:114:ILE:HD11	1:A:137:LEU:HD21	1.62	0.81
1:A:640:LEU:HD11	1:A:650:GLY:HA3	1.62	0.80
1:A:69:LEU:HD13	1:A:107:ILE:HD12	1.62	0.80
1:A:71:LYS:NZ	1:A:105:TYR:HB2	1.97	0.79
1:A:289:ALA:HB1	1:A:290:PRO:CA	2.13	0.79
1:B:435:GLN:HE22	1:B:441:LYS:NZ	1.81	0.78
1:A:388:GLN:HB2	1:A:391:LYS:HB2	1.67	0.77
1:A:153:GLN:HE22	1:A:170:ASN:ND2	1.83	0.76
1:A:391:LYS:HG3	3:A:844:HOH:O	1.85	0.76
1:B:343:ARG:HA	1:B:389:ILE:O	1.86	0.76
1:A:272:ASN:HD22	1:A:274:ASP:H	1.31	0.75
1:A:71:LYS:HZ3	1:A:105:TYR:HB2	1.48	0.75
1:B:51:ASN:HB2	3:B:1235:HOH:O	1.84	0.75
1:B:72:GLN:HB2	3:B:1399:HOH:O	1.87	0.75
1:A:320:GLN:OE1	1:A:669:ARG:HD3	1.88	0.73
1:B:672:GLY:HA2	3:B:1415:HOH:O	1.88	0.73
1:A:276:LEU:CD2	1:A:276:LEU:H	2.02	0.73

Continued on next page...

Continued from previous page...

Atom-1	Atom-2	Interatomic distance (Å)	Clash overlap (Å)
1:A:310:ARG:HH12	1:A:343:ARG:NH1	1.86	0.73
1:A:52:THR:HG22	3:A:1277:HOH:O	1.89	0.72
1:A:69:LEU:CD1	1:A:107:ILE:HD12	2.20	0.71
1:B:505:GLN:HB3	3:B:1041:HOH:O	1.89	0.71
1:A:172:ILE:H	1:A:186:THR:CG2	2.04	0.70
1:A:176:ILE:HG12	3:A:1465:HOH:O	1.90	0.70
1:A:289:ALA:HB2	3:A:1119:HOH:O	1.91	0.70
1:A:388:GLN:CB	1:A:391:LYS:HB2	2.23	0.69
1:B:579:ASP:HB3	1:B:583:SER:OG	1.93	0.69
1:B:106:SER:HB3	1:B:115:LEU:HB3	1.73	0.69
1:B:320:GLN:OE1	1:B:669:ARG:HD3	1.93	0.69
1:B:410:LEU:HD13	1:B:415:LEU:HD23	1.75	0.68
1:B:175:LYS:HG2	1:B:182:SER:HB3	1.73	0.68
1:A:516:PHE:CE2	1:A:523:LYS:HD2	2.28	0.68
1:A:114:ILE:CD1	1:A:137:LEU:HD21	2.24	0.68
1:B:172:ILE:H	1:B:186:THR:CG2	2.04	0.67
1:A:410:LEU:HD13	1:A:415:LEU:HD23	1.76	0.67
1:B:72:GLN:H	1:B:72:GLN:HE21	1.42	0.67
1:A:47:ASP:HA	1:A:52:THR:HG23	1.76	0.67
1:B:153:GLN:HE22	1:B:170:ASN:ND2	1.92	0.67
1:B:55:LEU:HD21	1:B:559:PHE:HE2	1.60	0.67
1:B:76:ILE:HD12	1:B:90:LEU:HD11	1.78	0.66
1:B:184:ARG:HD2	1:B:187:TRP:CE2	2.30	0.66
1:B:71:LYS:HG2	1:B:76:ILE:HG12	1.78	0.65
1:B:392:LYS:HD3	3:B:1049:HOH:O	1.96	0.65
1:B:280:THR:HB	3:B:1352:HOH:O	1.96	0.65
1:B:321:ASN:ND2	3:B:1116:HOH:O	2.27	0.65
1:B:437:SER:HB2	3:B:1339:HOH:O	1.95	0.65
1:B:438:ASP:OD1	1:B:440:THR:HB	1.96	0.65
1:B:61:ARG:CZ	1:B:61:ARG:HB3	2.27	0.64
1:B:658:ARG:HG2	1:B:661:TYR:CE2	2.32	0.64
1:A:76:ILE:HD12	1:A:90:LEU:HD11	1.80	0.64
1:B:392:LYS:HG2	3:B:1037:HOH:O	1.97	0.64
1:A:272:ASN:C	1:A:272:ASN:HD22	2.01	0.64
1:A:183:TYR:HE1	1:A:277:SER:O	1.82	0.63
1:B:272:ASN:HD22	1:B:274:ASP:H	1.47	0.63
1:B:76:ILE:HB	1:B:90:LEU:CD1	2.29	0.62
1:A:693:GLU:OE1	1:A:696:LYS:HE2	1.99	0.62
1:A:286:GLN:NE2	1:A:288:THR:HG22	2.14	0.62
1:A:184:ARG:HD2	1:A:187:TRP:CE2	2.35	0.62
1:A:171:ASP:OD1	1:A:186:THR:HG23	1.98	0.61

Continued on next page...

Continued from previous page...

Atom-1	Atom-2	Interatomic distance (Å)	Clash overlap (Å)
1:B:718:GLN:HE22	1:B:721:LYS:NZ	1.98	0.61
1:B:72:GLN:NE2	1:B:72:GLN:N	2.45	0.61
1:B:184:ARG:HD3	1:B:186:THR:O	2.01	0.61
1:B:272:ASN:ND2	1:B:274:ASP:H	1.99	0.61
1:B:377:ASN:HB2	1:B:381:TYR:O	2.01	0.61
1:A:528:MET:CE	1:A:574:ILE:HG21	2.31	0.61
1:A:438:ASP:OD1	1:A:440:THR:HB	2.01	0.60
1:A:90:LEU:HD13	1:A:90:LEU:O	2.01	0.60
1:A:597:ARG:HH12	1:A:679:ASN:HD21	1.49	0.60
1:A:608:GLU:HG2	3:A:1485:HOH:O	2.00	0.60
1:A:325:MET:HE2	1:A:327:ILE:HD11	1.82	0.60
1:B:89:PHE:HD1	1:B:90:LEU:HD12	1.65	0.60
1:B:125:ARG:HG2	1:B:126:HIS:CE1	2.35	0.60
1:B:512:LYS:HD3	3:B:822:HOH:O	2.02	0.60
1:A:51:ASN:OD1	1:A:54:ARG:HD3	2.01	0.60
1:B:377:ASN:HB2	1:B:381:TYR:H	1.67	0.60
1:A:177:GLU:HB2	1:A:180:LEU:HD13	1.83	0.60
1:A:203:TYR:HA	1:A:207:VAL:HG13	1.84	0.60
1:B:272:ASN:C	1:B:272:ASN:HD22	2.04	0.59
1:B:538:LYS:HE2	3:B:1396:HOH:O	2.02	0.59
1:B:731:GLN:HG2	3:B:1042:HOH:O	2.01	0.59
1:B:651:ILE:CD1	1:B:755:MET:HE2	2.32	0.59
1:B:310:ARG:HH22	1:B:369:ASN:ND2	2.00	0.59
1:A:177:GLU:HB2	1:A:180:LEU:HD22	1.84	0.59
1:B:289:ALA:CB	1:B:290:PRO:HA	2.26	0.59
1:A:614:SER:HA	1:A:619:VAL:HB	1.83	0.59
1:A:170:ASN:N	1:A:170:ASN:HD22	1.99	0.59
1:A:618:PHE:HB2	3:A:1514:HOH:O	2.02	0.59
1:B:697:GLN:HG3	3:B:852:HOH:O	2.02	0.58
1:A:579:ASP:HB3	1:A:583:SER:OG	2.01	0.58
1:A:214:LEU:O	1:A:214:LEU:HD12	2.03	0.58
1:B:229:ASN:ND2	3:B:869:HOH:O	2.36	0.58
1:B:538:LYS:HD3	3:B:1434:HOH:O	2.04	0.58
1:A:103:ASN:HB3	3:A:1186:HOH:O	2.03	0.58
1:A:184:ARG:HD2	1:A:187:TRP:CD2	2.39	0.58
1:A:514:LEU:HD12	1:A:557:THR:HG22	1.85	0.57
1:A:327:ILE:HB	1:A:343:ARG:HG2	1.86	0.57
1:B:676:PRO:HD2	1:B:677:GLU:OE2	2.05	0.57
1:B:105:TYR:HB2	3:B:1318:HOH:O	2.05	0.57
1:A:481:THR:OG1	1:A:483:HIS:HE1	1.87	0.57
1:A:114:ILE:HG13	1:A:137:LEU:HD11	1.86	0.57

Continued on next page...

Continued from previous page...

Atom-1	Atom-2	Interatomic distance (Å)	Clash overlap (Å)
1:A:658:ARG:HG2	1:A:661:TYR:CE2	2.40	0.57
1:A:76:ILE:HB	1:A:90:LEU:CD1	2.34	0.57
1:B:693:GLU:HB2	3:B:1135:HOH:O	2.04	0.57
1:B:193:ILE:HG22	1:B:194:ILE:CD1	2.29	0.56
1:B:693:GLU:OE1	1:B:696:LYS:HE3	2.04	0.56
1:B:502:LYS:O	1:B:505:GLN:HG2	2.04	0.56
1:B:502:LYS:HA	1:B:505:GLN:HE21	1.71	0.56
1:B:276:LEU:HD23	1:B:276:LEU:O	2.06	0.56
1:A:106:SER:HB3	1:A:115:LEU:HB3	1.86	0.56
1:A:429:ARG:NE	3:A:964:HOH:O	2.25	0.56
1:B:55:LEU:HD21	1:B:559:PHE:CE2	2.40	0.56
1:B:103:ASN:HB2	3:B:886:HOH:O	2.03	0.56
1:B:140:ARG:HH11	1:B:140:ARG:HG2	1.70	0.56
1:A:51:ASN:HB2	3:A:1026:HOH:O	2.04	0.56
1:A:377:ASN:HB2	1:A:381:TYR:O	2.06	0.56
1:B:57:LEU:HD23	3:B:994:HOH:O	2.04	0.56
1:B:481:THR:OG1	1:B:483:HIS:HE1	1.89	0.56
1:A:341:VAL:O	1:A:341:VAL:HG22	2.06	0.55
1:B:435:GLN:NE2	1:B:441:LYS:HD3	2.22	0.55
1:B:691:ARG:NE	3:B:773:HOH:O	2.27	0.55
1:A:704:HIS:HD2	1:A:716:SER:OG	1.89	0.55
1:A:184:ARG:HD3	1:A:186:THR:O	2.06	0.55
1:B:61:ARG:NH1	1:B:61:ARG:HB3	2.20	0.55
1:A:229:ASN:ND2	3:A:852:HOH:O	2.40	0.55
1:B:184:ARG:HD2	1:B:187:TRP:CD2	2.42	0.55
1:A:684:ARG:HG3	3:A:1534:HOH:O	2.07	0.55
1:B:289:ALA:HB2	3:B:1115:HOH:O	2.07	0.55
1:A:528:MET:HE2	1:A:574:ILE:HG21	1.88	0.55
1:B:435:GLN:HE22	1:B:441:LYS:HZ3	1.54	0.55
1:A:71:LYS:HZ3	1:A:105:TYR:HD1	1.54	0.55
1:A:272:ASN:HD21	1:A:274:ASP:HB2	1.72	0.54
1:A:704:HIS:HE1	1:A:711:VAL:O	1.91	0.54
1:B:452:GLU:HB3	3:B:1137:HOH:O	2.07	0.54
1:B:413:ASP:HB2	3:B:1152:HOH:O	2.07	0.54
1:B:471:ARG:HG2	1:B:480:TYR:CD2	2.43	0.54
1:B:74:ASN:C	1:B:92:ASN:HB3	2.28	0.54
1:B:414:TYR:HA	1:B:436:LEU:HD13	1.89	0.54
1:B:726:VAL:HG12	1:B:728:VAL:HG23	1.89	0.54
1:B:377:ASN:HB3	1:B:379:GLU:H	1.73	0.54
1:A:98:PHE:CE2	1:A:100:HIS:HB2	2.42	0.54
1:B:600:THR:O	1:B:603:VAL:HG13	2.08	0.54

Continued on next page...

Continued from previous page...

Atom-1	Atom-2	Interatomic distance (Å)	Clash overlap (Å)
1:A:762:CYS:HB2	3:A:1122:HOH:O	2.06	0.53
1:A:471:ARG:HB3	3:A:1383:HOH:O	2.09	0.53
1:B:289:ALA:HB2	3:B:904:HOH:O	2.09	0.53
1:B:651:ILE:HD12	1:B:755:MET:HE2	1.90	0.53
1:A:243:ASP:HB3	3:A:1049:HOH:O	2.07	0.53
1:B:97:GLU:HB2	3:B:1067:HOH:O	2.07	0.53
1:B:112:GLN:HG2	1:B:138:ASN:HD21	1.73	0.53
1:A:234:PRO:HB2	1:B:248:TYR:CZ	2.43	0.53
1:B:203:TYR:HA	1:B:207:VAL:CG1	2.39	0.53
1:A:276:LEU:CD2	1:A:276:LEU:N	2.69	0.53
1:A:310:ARG:NH1	1:A:329:ASP:OD1	2.42	0.53
1:A:276:LEU:HD23	3:A:1080:HOH:O	2.09	0.53
1:A:71:LYS:HG2	1:A:76:ILE:HG12	1.91	0.53
1:A:581:ARG:HB2	1:A:605:ASP:OD2	2.08	0.53
1:B:331:ASP:HB3	1:B:334:SER:HB3	1.91	0.53
1:A:487:ASN:OD1	1:A:489:LYS:HE2	2.09	0.52
1:A:51:ASN:HB2	3:A:883:HOH:O	2.08	0.52
1:A:379:GLU:HB2	3:A:842:HOH:O	2.09	0.52
1:A:348:MET:HG3	3:A:900:HOH:O	2.08	0.52
1:A:52:THR:HB	3:A:1079:HOH:O	2.08	0.52
1:B:535:ASP:OD1	1:B:537:SER:HB3	2.10	0.52
1:B:78:VAL:HG12	1:B:87:SER:O	2.09	0.52
1:B:502:LYS:HD2	1:B:505:GLN:NE2	2.25	0.52
1:A:65:ASP:OD2	1:A:466:LYS:HB2	2.10	0.52
1:A:626:ILE:O	1:A:650:GLY:HA2	2.10	0.52
1:B:214:LEU:HD12	1:B:214:LEU:O	2.10	0.52
1:A:47:ASP:HA	1:A:52:THR:CG2	2.40	0.51
1:B:410:LEU:HD13	1:B:415:LEU:CD2	2.40	0.51
1:B:543:LEU:HD12	1:B:567:LEU:HD13	1.92	0.51
1:A:289:ALA:HB1	1:A:290:PRO:C	2.31	0.51
1:B:435:GLN:HE22	1:B:441:LYS:HZ2	1.58	0.51
1:A:115:LEU:HD21	1:A:155:VAL:HG11	1.93	0.51
1:A:321:ASN:ND2	3:A:951:HOH:O	2.43	0.51
1:A:310:ARG:HH12	1:A:343:ARG:HH11	1.58	0.51
1:A:528:MET:HE2	1:A:574:ILE:CG2	2.41	0.51
1:A:471:ARG:HG3	3:A:1099:HOH:O	2.10	0.51
1:B:459:VAL:HG22	1:B:460:SER:N	2.25	0.51
1:A:289:ALA:CB	1:A:290:PRO:CA	2.87	0.51
1:A:651:ILE:CD1	1:A:755:MET:HE2	2.41	0.51
1:A:615:LYS:HG3	3:A:955:HOH:O	2.11	0.51
1:B:57:LEU:HD21	3:B:1084:HOH:O	2.11	0.50

Continued on next page...

Continued from previous page...

Atom-1	Atom-2	Interatomic distance (Å)	Clash overlap (Å)
1:A:65:ASP:CG	1:A:464:GLU:HB2	2.31	0.50
1:A:293:MET:HG3	1:A:298:HIS:CB	2.41	0.50
1:A:520:ASN:HA	3:A:1108:HOH:O	2.11	0.50
1:B:170:ASN:N	1:B:170:ASN:HD22	2.10	0.50
1:A:487:ASN:HB2	1:A:489:LYS:HG3	1.93	0.50
1:A:331:ASP:HB3	1:A:334:SER:HB2	1.94	0.50
1:B:741:GLY:O	1:B:742:ILE:C	2.50	0.50
1:B:580:GLY:O	1:B:583:SER:HB2	2.11	0.50
1:A:483:HIS:HD2	3:A:954:HOH:O	1.94	0.50
1:A:56:LYS:HD2	3:A:826:HOH:O	2.12	0.50
1:B:285:ILE:N	1:B:285:ILE:HD12	2.26	0.50
1:A:272:ASN:HD22	1:A:273:THR:N	2.09	0.50
1:B:693:GLU:HA	1:B:726:VAL:HG11	1.94	0.49
1:A:519:LEU:HD13	3:A:1470:HOH:O	2.12	0.49
1:B:175:LYS:CG	1:B:182:SER:HB3	2.42	0.49
1:B:435:GLN:CD	1:B:441:LYS:HD3	2.33	0.49
1:A:630:SER:HA	1:A:654:ALA:O	2.11	0.49
1:B:718:GLN:HE22	1:B:721:LYS:HZ1	1.60	0.49
1:A:177:GLU:CB	1:A:180:LEU:HD13	2.42	0.49
1:B:65:ASP:OD2	1:B:466:LYS:HB2	2.12	0.49
1:A:147:ARG:HD2	3:A:1435:HOH:O	2.12	0.49
1:A:333:SER:HB2	3:A:1292:HOH:O	2.11	0.49
1:B:197:GLY:C	1:B:213:ALA:HB3	2.33	0.49
1:B:147:ARG:HD3	3:B:1386:HOH:O	2.12	0.49
1:B:171:ASP:OD1	1:B:186:THR:HG23	2.12	0.49
1:A:651:ILE:HD13	1:A:755:MET:HE2	1.94	0.49
1:B:696:LYS:HG3	1:B:728:VAL:HG22	1.95	0.48
1:A:310:ARG:NH1	1:A:343:ARG:NH1	2.58	0.48
1:A:372:TYR:OH	1:A:436:LEU:HG	2.13	0.48
1:A:415:LEU:HB2	1:A:436:LEU:HD11	1.95	0.48
1:A:193:ILE:HG22	1:A:194:ILE:HG13	1.95	0.48
1:A:150:ASN:ND2	3:A:914:HOH:O	2.40	0.48
1:B:341:VAL:HG13	1:B:341:VAL:O	2.14	0.48
1:A:512:LYS:HD2	3:A:917:HOH:O	2.12	0.48
1:B:232:GLU:HG2	3:B:1329:HOH:O	2.13	0.48
1:B:289:ALA:CB	1:B:290:PRO:CA	2.81	0.48
1:A:54:ARG:HG2	3:A:1038:HOH:O	2.14	0.48
1:A:472:CYS:O	1:A:478:PRO:HA	2.14	0.48
1:A:176:ILE:HD11	1:A:276:LEU:HD21	1.96	0.48
1:A:528:MET:HE3	1:A:574:ILE:HG21	1.96	0.48
1:B:630:SER:HA	1:B:654:ALA:O	2.14	0.48

Continued on next page...

Continued from previous page...

Atom-1	Atom-2	Interatomic distance (Å)	Clash overlap (Å)
1:A:80:ASN:HB3	1:A:85:ASN:OD1	2.13	0.48
1:B:397:ILE:HG13	1:B:398:THR:HG23	1.95	0.48
1:A:236:ILE:CG2	1:A:254:VAL:HG13	2.44	0.48
1:B:75:ASN:N	3:B:1399:HOH:O	2.45	0.48
1:A:89:PHE:CE1	1:A:107:ILE:HD13	2.49	0.48
1:B:701:LEU:HD22	1:B:703:ILE:HG13	1.96	0.48
1:A:277:SER:O	1:A:278:SER:HB3	2.13	0.47
1:B:150:ASN:O	1:B:151:ASN:HB2	2.14	0.47
1:A:562:ASN:HB2	3:A:965:HOH:O	2.14	0.47
1:B:291:ALA:O	1:B:295:ILE:HG23	2.13	0.47
1:B:268:PHE:CD2	1:B:313:LEU:HD21	2.49	0.47
1:A:248:TYR:CZ	1:B:234:PRO:HB2	2.49	0.47
1:B:158:SER:HB3	1:B:163:LYS:HB2	1.97	0.47
1:B:293:MET:HG3	1:B:298:HIS:CB	2.44	0.47
1:B:56:LYS:HD3	1:B:495:GLU:OE1	2.14	0.47
1:B:173:TYR:CE2	1:B:184:ARG:HG3	2.49	0.47
1:A:341:VAL:O	1:A:342:ALA:HB2	2.14	0.47
1:B:110:ASP:OD2	1:B:162:HIS:ND1	2.46	0.47
1:A:516:PHE:CD2	1:A:523:LYS:HD2	2.49	0.47
1:A:377:ASN:HB3	1:A:379:GLU:H	1.78	0.47
1:B:471:ARG:HG2	1:B:480:TYR:HD2	1.80	0.47
1:B:429:ARG:NE	3:B:812:HOH:O	2.26	0.47
1:A:726:VAL:CG1	1:A:728:VAL:HG23	2.45	0.47
1:B:472:CYS:O	1:B:478:PRO:HA	2.14	0.47
1:A:156:THR:HG21	1:A:214:LEU:HD11	1.95	0.47
1:A:85:ASN:ND2	3:A:825:HOH:O	2.48	0.47
1:B:689:MET:HB3	1:B:722:ALA:CB	2.44	0.47
1:B:269:PHE:CE2	1:B:286:GLN:HB2	2.49	0.47
1:B:764:SER:HB3	3:B:855:HOH:O	2.14	0.47
1:B:341:VAL:O	1:B:342:ALA:HB2	2.14	0.47
1:B:514:LEU:HD22	1:B:525:TRP:HE3	1.80	0.47
1:A:369:ASN:O	1:A:389:ILE:HG12	2.15	0.47
1:A:74:ASN:HB3	1:A:92:ASN:HB3	1.97	0.47
1:A:377:ASN:HB2	1:A:381:TYR:H	1.79	0.47
1:A:77:LEU:HD23	1:A:88:VAL:HA	1.97	0.47
1:B:237:GLU:HA	1:B:252:VAL:O	2.15	0.47
1:A:114:ILE:CG1	1:A:137:LEU:HD11	2.45	0.47
1:B:92:ASN:HD22	1:B:93:SER:N	2.12	0.47
1:B:491:LEU:O	1:B:492:ARG:HB3	2.15	0.46
1:A:689:MET:HB3	1:A:722:ALA:HB2	1.97	0.46
1:A:281:ASN:ND2	3:A:861:HOH:O	2.46	0.46

Continued on next page...

Continued from previous page...

Atom-1	Atom-2	Interatomic distance (Å)	Clash overlap (Å)
1:A:658:ARG:HB2	1:A:687:THR:HG22	1.97	0.46
1:B:236:ILE:O	1:B:253:ARG:HA	2.14	0.46
1:A:435:GLN:NE2	1:A:441:LYS:HD2	2.30	0.46
1:A:72:GLN:HB3	3:A:870:HOH:O	2.16	0.46
1:B:704:HIS:CE1	1:B:711:VAL:O	2.68	0.46
1:B:325:MET:HE1	1:B:327:ILE:HD11	1.97	0.46
1:A:224:ALA:HB1	1:A:268:PHE:CZ	2.50	0.46
1:A:110:ASP:OD1	1:A:161:GLY:HA2	2.16	0.46
1:A:183:TYR:CE1	1:A:277:SER:O	2.66	0.46
1:A:74:ASN:HB3	1:A:92:ASN:CB	2.45	0.46
1:B:74:ASN:HB2	3:B:769:HOH:O	2.15	0.46
1:A:384:ILE:HG13	1:A:404:VAL:HG21	1.98	0.46
1:B:83:TYR:HB2	1:B:85:ASN:OD1	2.16	0.46
1:A:594:ILE:HG22	1:A:601:PHE:HB2	1.97	0.46
1:B:471:ARG:NH1	3:B:1234:HOH:O	2.48	0.46
1:A:397:ILE:HG13	1:A:398:THR:HG23	1.96	0.46
1:A:402:TRP:CD2	1:A:421:GLU:HB2	2.50	0.46
1:B:126:HIS:HE1	3:B:807:HOH:O	1.98	0.46
1:B:651:ILE:HG23	1:B:701:LEU:HB3	1.98	0.46
1:B:39:SER:O	1:B:40:ARG:HB2	2.16	0.46
1:B:612:GLN:HB3	1:B:612:GLN:HE21	1.54	0.46
1:B:90:LEU:O	1:B:90:LEU:HD13	2.15	0.45
1:B:310:ARG:NH2	1:B:369:ASN:ND2	2.64	0.45
1:B:654:ALA:HA	1:B:704:HIS:CD2	2.51	0.45
1:A:153:GLN:HE22	1:A:170:ASN:HD21	1.60	0.45
1:A:350:THR:HG23	3:A:900:HOH:O	2.17	0.45
1:B:392:LYS:HG2	1:B:392:LYS:H	1.54	0.45
1:A:666:TYR:CE2	2:A:800:ACF:H41	2.51	0.45
1:A:388:GLN:HB3	1:A:391:LYS:HB2	1.99	0.45
1:B:377:ASN:HB2	1:B:381:TYR:N	2.29	0.45
1:A:471:ARG:NE	3:A:1099:HOH:O	2.50	0.45
1:A:310:ARG:NH1	1:A:343:ARG:HH11	2.15	0.45
1:B:89:PHE:CE1	1:B:107:ILE:HD13	2.52	0.45
1:A:693:GLU:HG2	3:A:1422:HOH:O	2.17	0.45
1:B:146:GLU:HG3	1:B:181:PRO:HG3	1.99	0.45
1:B:461:PHE:CD2	1:B:468:TYR:HB3	2.52	0.45
1:A:513:LYS:O	1:A:527:GLN:HA	2.17	0.45
1:A:596:ARG:O	1:A:597:ARG:NH1	2.49	0.44
1:B:651:ILE:HD13	1:B:755:MET:HE2	1.98	0.44
1:A:340:LEU:O	1:A:342:ALA:N	2.51	0.44
1:B:203:TYR:HA	1:B:207:VAL:HG13	1.99	0.44

Continued on next page...

Continued from previous page...

Atom-1	Atom-2	Interatomic distance (Å)	Clash overlap (Å)
1:A:74:ASN:C	1:A:92:ASN:HB3	2.37	0.44
1:B:177:GLU:HB2	1:B:180:LEU:HD13	1.99	0.44
1:B:596:ARG:O	1:B:597:ARG:NH1	2.46	0.44
1:A:41:LYS:HB2	3:A:1120:HOH:O	2.17	0.44
1:B:402:TRP:CD2	1:B:421:GLU:HB2	2.53	0.44
1:A:540:TYR:HE1	3:A:1514:HOH:O	1.99	0.44
1:A:74:ASN:HB2	3:A:870:HOH:O	2.18	0.44
1:A:612:GLN:HE21	1:A:612:GLN:HB3	1.57	0.44
1:A:104:ASP:OD1	1:A:105:TYR:N	2.48	0.44
1:B:310:ARG:NH2	1:B:369:ASN:HD22	2.15	0.44
1:A:229:ASN:ND2	3:A:819:HOH:O	2.41	0.44
1:B:153:GLN:HE22	1:B:170:ASN:HD22	1.66	0.44
1:B:483:HIS:HD2	3:B:1231:HOH:O	2.00	0.44
1:A:751:ILE:HG23	1:A:752:TYR:N	2.33	0.44
1:B:539:LYS:HD3	3:B:937:HOH:O	2.17	0.43
1:A:302:ASP:HB3	1:A:314:GLN:HB2	1.99	0.43
1:A:704:HIS:CE1	1:A:711:VAL:O	2.70	0.43
1:A:186:THR:HG21	1:A:196:ASN:CB	2.48	0.43
1:A:190:LYS:HE3	1:A:193:ILE:HG13	2.00	0.43
1:A:72:GLN:HE22	1:A:77:LEU:HD12	1.83	0.43
1:B:112:GLN:O	1:B:137:LEU:HB2	2.18	0.43
1:B:689:MET:HB3	1:B:722:ALA:HB2	2.00	0.43
1:B:262:VAL:HG23	3:B:929:HOH:O	2.19	0.43
1:B:325:MET:O	1:B:344:GLN:HA	2.19	0.43
1:A:115:LEU:HD21	1:A:155:VAL:CG1	2.48	0.43
1:B:546:VAL:HG22	1:B:547:TYR:N	2.33	0.43
1:A:154:TRP:CE2	1:A:212:SER:HB2	2.54	0.43
1:B:415:LEU:HB3	1:B:434:ILE:CG2	2.48	0.43
1:A:614:SER:HB3	1:A:624:ILE:HD11	1.99	0.43
1:B:344:GLN:NE2	3:B:969:HOH:O	2.51	0.43
1:A:124:TRP:HB2	1:A:204:GLU:OE2	2.19	0.43
1:A:90:LEU:HD22	1:A:90:LEU:C	2.39	0.43
1:B:276:LEU:CD2	1:B:276:LEU:H	2.32	0.43
1:B:93:SER:O	1:B:95:PHE:N	2.51	0.43
1:A:194:ILE:HD11	3:A:1460:HOH:O	2.19	0.43
1:A:242:SER:HB3	1:A:246:LEU:HD12	2.00	0.43
1:A:207:VAL:HG22	1:A:208:PHE:N	2.34	0.42
1:B:597:ARG:HA	1:B:682:HIS:CD2	2.54	0.42
1:A:453:ARG:HG3	1:A:476:GLY:HA3	2.01	0.42
1:A:741:GLY:O	1:A:742:ILE:C	2.56	0.42
1:A:49:LEU:HD22	1:A:749:GLN:HA	2.00	0.42

Continued on next page...

Continued from previous page...

Atom-1	Atom-2	Interatomic distance (Å)	Clash overlap (Å)
1:B:290:PRO:HG3	1:B:326:ASP:OD2	2.18	0.42
1:A:105:TYR:HB2	3:A:901:HOH:O	2.18	0.42
1:B:41:LYS:O	1:B:507:VAL:HG23	2.19	0.42
1:B:55:LEU:HD23	1:B:500:LEU:CD2	2.49	0.42
1:B:658:ARG:HD2	3:B:1277:HOH:O	2.19	0.42
1:B:514:LEU:HD22	1:B:525:TRP:CE3	2.54	0.42
1:B:325:MET:HE2	1:B:327:ILE:HG12	2.01	0.42
1:B:93:SER:HA	1:B:96:ASP:OD2	2.19	0.42
1:A:510:PRO:HD3	1:A:569:SER:HB2	2.02	0.42
1:A:310:ARG:HG3	1:A:329:ASP:OD1	2.20	0.42
1:B:675:THR:HB	1:B:677:GLU:OE2	2.19	0.42
1:A:459:VAL:HG22	1:A:460:SER:N	2.34	0.42
1:A:542:LEU:HD23	1:A:542:LEU:C	2.39	0.42
1:A:71:LYS:HE2	1:A:76:ILE:CD1	2.50	0.42
1:A:60:LEU:C	1:A:60:LEU:HD12	2.40	0.42
1:B:615:LYS:HE2	3:B:1361:HOH:O	2.20	0.42
1:B:71:LYS:CG	1:B:76:ILE:HG12	2.46	0.42
1:A:654:ALA:HA	1:A:704:HIS:CD2	2.55	0.42
1:B:466:LYS:HB2	3:B:954:HOH:O	2.20	0.42
1:B:704:HIS:HD2	1:B:716:SER:OG	2.02	0.42
1:A:136:ASP:CG	1:A:139:LYS:HG2	2.40	0.42
1:A:418:ILE:HD13	1:A:431:LEU:HA	2.02	0.42
1:B:415:LEU:HD13	1:B:415:LEU:C	2.40	0.42
1:B:559:PHE:CZ	1:B:561:LEU:HD13	2.55	0.42
1:A:661:TYR:OH	1:A:718:GLN:HG3	2.20	0.42
1:B:156:THR:HG21	1:B:214:LEU:HD11	2.01	0.42
1:B:640:LEU:HD11	1:B:650:GLY:HA3	2.02	0.42
1:A:677:GLU:CD	1:A:677:GLU:H	2.23	0.42
1:B:140:ARG:NH1	1:B:140:ARG:HG2	2.35	0.41
1:A:630:SER:HB2	1:A:740:HIS:NE2	2.35	0.41
1:A:81:ALA:O	1:A:492:ARG:NH2	2.48	0.41
1:A:159:PRO:HD3	1:A:216:TRP:HB3	2.02	0.41
1:A:285:ILE:HG21	1:A:337:TRP:HD1	1.85	0.41
1:A:272:ASN:ND2	1:A:272:ASN:C	2.73	0.41
1:A:89:PHE:CZ	1:A:107:ILE:HD13	2.55	0.41
1:A:54:ARG:HD2	3:A:1177:HOH:O	2.20	0.41
1:A:236:ILE:O	1:A:253:ARG:HA	2.19	0.41
1:B:216:TRP:CZ3	1:B:273:THR:HG21	2.56	0.41
1:A:71:LYS:HZ1	1:A:105:TYR:HB2	1.78	0.41
1:B:109:PRO:HG2	1:B:158:SER:O	2.20	0.41
1:B:60:LEU:C	1:B:60:LEU:HD12	2.41	0.41

Continued on next page...

Continued from previous page...

Atom-1	Atom-2	Interatomic distance (Å)	Clash overlap (Å)
1:B:422:TYR:CE2	1:B:423:LYS:HD3	2.55	0.41
1:B:193:ILE:CG2	1:B:194:ILE:HD12	2.34	0.41
1:A:289:ALA:CB	1:A:290:PRO:HA	2.43	0.41
1:A:114:ILE:HG13	1:A:137:LEU:CD1	2.51	0.41
1:B:144:THR:HG22	1:B:147:ARG:NH2	2.35	0.41
1:B:302:ASP:HB3	1:B:314:GLN:HB2	2.03	0.41
1:A:391:LYS:HD3	3:A:987:HOH:O	2.20	0.41
1:B:603:VAL:HG23	1:B:639:VAL:CG2	2.50	0.41
1:A:520:ASN:O	1:A:521:GLU:HB2	2.21	0.41
1:B:152:THR:HG21	1:B:155:VAL:CG2	2.51	0.41
1:B:276:LEU:H	1:B:276:LEU:HD22	1.85	0.41
1:A:486:VAL:HG13	1:A:487:ASN:N	2.36	0.41
1:A:159:PRO:HD3	1:A:216:TRP:CB	2.51	0.41
1:A:293:MET:HG2	1:A:315:TRP:HB3	2.03	0.41
1:B:718:GLN:HE21	1:B:718:GLN:HA	1.86	0.41
1:B:310:ARG:HD3	1:B:329:ASP:OD1	2.21	0.41
1:B:532:PRO:HD3	1:B:569:SER:HA	2.03	0.41
1:B:520:ASN:O	1:B:521:GLU:HB2	2.20	0.41
1:B:528:MET:HE1	1:B:530:LEU:HD21	2.02	0.41
1:A:458:SER:OG	1:A:471:ARG:HB2	2.21	0.40
1:A:538:LYS:HE3	3:A:1233:HOH:O	2.21	0.40
1:B:154:TRP:O	1:B:166:TYR:HA	2.21	0.40
1:B:168:TRP:O	1:B:169:ASN:HB2	2.20	0.40
1:B:726:VAL:CG1	1:B:726:VAL:O	2.70	0.40
1:B:571:GLU:CD	1:B:760:LYS:HD3	2.41	0.40
1:B:581:ARG:NE	1:B:605:ASP:OD2	2.50	0.40
1:A:290:PRO:HD3	1:A:315:TRP:CD1	2.57	0.40
1:B:237:GLU:HG2	1:B:253:ARG:HB3	2.04	0.40
1:A:392:LYS:HG3	1:A:393:ASP:N	2.37	0.40

There are no symmetry-related clashes.

5.3 Torsion angles ⓘ

5.3.1 Protein backbone ⓘ

In the following table, the Percentiles column shows the percent Ramachandran outliers of the chain as a percentile score with respect to all X-ray entries followed by that with respect to entries of similar resolution.

The Analysed column shows the number of residues for which the backbone conformation was analysed, and the total number of residues.

Mol	Chain	Analysed	Favoured	Allowed	Outliers	Percentiles	
1	A	724/726 (100%)	677 (94%)	39 (5%)	8 (1%)	17	18
1	B	724/726 (100%)	674 (93%)	45 (6%)	5 (1%)	26	31
All	All	1448/1452 (100%)	1351 (93%)	84 (6%)	13 (1%)	21	24

All (13) Ramachandran outliers are listed below:

Mol	Chain	Res	Type
1	A	278	SER
1	A	342	ALA
1	B	94	THR
1	B	342	ALA
1	A	40	ARG
1	A	289	ALA
1	A	320	GLN
1	A	520	ASN
1	B	289	ALA
1	A	277	SER
1	B	320	GLN
1	A	341	VAL
1	B	140	ARG

5.3.2 Protein sidechains ⓘ

In the following table, the Percentiles column shows the percent sidechain outliers of the chain as a percentile score with respect to all X-ray entries followed by that with respect to entries of similar resolution.

The Analysed column shows the number of residues for which the sidechain conformation was analysed, and the total number of residues.

Mol	Chain	Analysed	Rotameric	Outliers	Percentiles	
1	A	651/651 (100%)	610 (94%)	41 (6%)	22	29
1	B	651/651 (100%)	613 (94%)	38 (6%)	25	33
All	All	1302/1302 (100%)	1223 (94%)	79 (6%)	23	30

All (79) residues with a non-rotameric sidechain are listed below:

Mol	Chain	Res	Type
1	A	41	LYS
1	A	51	ASN
1	A	61	ARG

Continued on next page...

Continued from previous page...

Mol	Chain	Res	Type
1	A	72	GLN
1	A	90	LEU
1	A	145	GLU
1	A	170	ASN
1	A	207	VAL
1	A	230	ASP
1	A	246	LEU
1	A	253	ARG
1	A	254	VAL
1	A	272	ASN
1	A	276	LEU
1	A	303	VAL
1	A	341	VAL
1	A	373	LYS
1	A	385	CYS
1	A	390	ASP
1	A	436	LEU
1	A	440	THR
1	A	442	VAL
1	A	448	GLU
1	A	472	CYS
1	A	482	LEU
1	A	507	VAL
1	A	514	LEU
1	A	536	LYS
1	A	543	LEU
1	A	561	LEU
1	A	581	ARG
1	A	603	VAL
1	A	658	ARG
1	A	673	LEU
1	A	679	ASN
1	A	689	MET
1	A	701	LEU
1	A	702	LEU
1	A	726	VAL
1	A	736	THR
1	A	761	GLN
1	B	51	ASN
1	B	72	GLN
1	B	90	LEU
1	B	92	ASN

Continued on next page...

Continued from previous page...

Mol	Chain	Res	Type
1	B	125	ARG
1	B	141	GLN
1	B	207	VAL
1	B	246	LEU
1	B	253	ARG
1	B	254	VAL
1	B	272	ASN
1	B	276	LEU
1	B	293	MET
1	B	303	VAL
1	B	336	ARG
1	B	385	CYS
1	B	388	GLN
1	B	392	LYS
1	B	425	MET
1	B	448	GLU
1	B	472	CYS
1	B	482	LEU
1	B	492	ARG
1	B	514	LEU
1	B	523	LYS
1	B	536	LYS
1	B	543	LEU
1	B	561	LEU
1	B	566	TYR
1	B	581	ARG
1	B	603	VAL
1	B	612	GLN
1	B	658	ARG
1	B	689	MET
1	B	701	LEU
1	B	702	LEU
1	B	736	THR
1	B	761	GLN

Some sidechains can be flipped to improve hydrogen bonding and reduce clashes. All (46) such sidechains are listed below:

Mol	Chain	Res	Type
1	A	72	GLN
1	A	126	HIS
1	A	141	GLN
1	A	169	ASN

Continued on next page...

Continued from previous page...

Mol	Chain	Res	Type
1	A	170	ASN
1	A	247	GLN
1	A	272	ASN
1	A	286	GLN
1	A	314	GLN
1	A	369	ASN
1	A	435	GLN
1	A	483	HIS
1	A	505	GLN
1	A	508	GLN
1	A	533	HIS
1	A	572	ASN
1	A	612	GLN
1	A	679	ASN
1	A	694	ASN
1	A	704	HIS
1	A	718	GLN
1	A	761	GLN
1	B	51	ASN
1	B	72	GLN
1	B	126	HIS
1	B	138	ASN
1	B	141	GLN
1	B	170	ASN
1	B	247	GLN
1	B	272	ASN
1	B	314	GLN
1	B	344	GLN
1	B	345	HIS
1	B	369	ASN
1	B	377	ASN
1	B	435	GLN
1	B	483	HIS
1	B	505	GLN
1	B	533	HIS
1	B	606	GLN
1	B	612	GLN
1	B	679	ASN
1	B	694	ASN
1	B	704	HIS
1	B	718	GLN
1	B	731	GLN

5.3.3 RNA ⓘ

There are no RNA molecules in this entry.

5.4 Non-standard residues in protein, DNA, RNA chains ⓘ

There are no non-standard protein/DNA/RNA residues in this entry.

5.5 Carbohydrates ⓘ

There are no carbohydrates in this entry.

5.6 Ligand geometry ⓘ

1 ligand is modelled in this entry.

In the following table, the Counts columns list the number of bonds (or angles) for which Mogul statistics could be retrieved, the number of bonds (or angles) that are observed in the model and the number of bonds (or angles) that are defined in the chemical component dictionary. The Link column lists molecule types, if any, to which the group is linked. The Z score for a bond length (or angle) is the number of standard deviations the observed value is removed from the expected value. A bond length (or angle) with $|Z| > 2$ is considered an outlier worth inspection. RMSZ is the root-mean-square of all Z scores of the bond lengths (or angles).

Mol	Type	Chain	Res	Link	Bond lengths			Bond angles		
					Counts	RMSZ	# $ Z > 2$	Counts	RMSZ	# $ Z > 2$
2	ACF	A	800	1	24,28,28	1.70	4 (16%)	28,39,39	0.86	1 (3%)

In the following table, the Chirals column lists the number of chiral outliers, the number of chiral centers analysed, the number of these observed in the model and the number defined in the chemical component dictionary. Similar counts are reported in the Torsion and Rings columns. '-' means no outliers of that kind were identified.

Mol	Type	Chain	Res	Link	Chirals	Torsions	Rings
2	ACF	A	800	1	-	0/15/38/38	0/3/3/3

All (4) bond length outliers are listed below:

Mol	Chain	Res	Type	Atoms	Z	Observed(Å)	Ideal(Å)
2	A	800	ACF	C21-N22	-5.35	1.33	1.47
2	A	800	ACF	C2-C1	2.09	1.57	1.53
2	A	800	ACF	C16-C10	2.38	1.43	1.38
2	A	800	ACF	C1-N8	3.38	1.41	1.34

All (1) bond angle outliers are listed below:

Mol	Chain	Res	Type	Atoms	Z	Observed($^{\circ}$)	Ideal($^{\circ}$)
2	A	800	ACF	C4-C2-C1	2.97	115.71	111.04

There are no chirality outliers.

There are no torsion outliers.

There are no ring outliers.

1 monomer is involved in 1 short contact:

Mol	Chain	Res	Type	Clashes	Symm-Clashes
2	A	800	ACF	1	0

5.7 Other polymers [i](#)

There are no such residues in this entry.

5.8 Polymer linkage issues [i](#)

There are no chain breaks in this entry.

6 Fit of model and data

6.1 Protein, DNA and RNA chains

In the following table, the column labelled ‘#RSRZ> 2’ contains the number (and percentage) of RSRZ outliers, followed by percent RSRZ outliers for the chain as percentile scores relative to all X-ray entries and entries of similar resolution. The OWAB column contains the minimum, median, 95th percentile and maximum values of the occupancy-weighted average B-factor per residue. The column labelled ‘Q< 0.9’ lists the number of (and percentage) of residues with an average occupancy less than 0.9.

Mol	Chain	Analysed	<RSRZ>	#RSRZ>2		OWAB(Å ²)	Q<0.9
1	A	726/726 (100%)	0.05	39 (5%)	29 38	12, 27, 52, 71	0
1	B	726/726 (100%)	0.12	33 (4%)	37 46	16, 30, 55, 72	0
All	All	1452/1452 (100%)	0.09	72 (4%)	32 41	12, 29, 54, 72	0

All (72) RSRZ outliers are listed below:

Mol	Chain	Res	Type	RSRZ
1	A	39	SER	12.1
1	B	39	SER	7.0
1	B	73	GLU	5.6
1	A	277	SER	4.8
1	A	40	ARG	4.7
1	A	96	ASP	4.4
1	B	90	LEU	4.3
1	B	105	TYR	4.2
1	B	74	ASN	4.2
1	A	73	GLU	4.1
1	A	98	PHE	4.0
1	A	92	ASN	4.0
1	B	333	SER	4.0
1	B	40	ARG	4.0
1	B	96	ASP	3.9
1	B	98	PHE	3.8
1	A	93	SER	3.7
1	B	72	GLN	3.7
1	A	140	ARG	3.7
1	A	95	PHE	3.7
1	A	90	LEU	3.6
1	A	88	VAL	3.4
1	B	93	SER	3.4
1	A	105	TYR	3.3

Continued on next page...

Continued from previous page...

Mol	Chain	Res	Type	RSRZ
1	B	140	ARG	3.2
1	A	97	GLU	3.2
1	B	94	THR	3.1
1	A	137	LEU	3.0
1	B	92	ASN	3.0
1	A	94	THR	3.0
1	B	95	PHE	2.9
1	B	341	VAL	2.8
1	B	135	TYR	2.8
1	A	138	ASN	2.8
1	B	97	GLU	2.8
1	A	71	LYS	2.7
1	B	88	VAL	2.7
1	B	332	GLU	2.7
1	B	505	GLN	2.7
1	A	72	GLN	2.7
1	A	615	LYS	2.7
1	A	89	PHE	2.6
1	A	91	GLU	2.6
1	A	139	LYS	2.6
1	A	279	VAL	2.6
1	B	91	GLU	2.5
1	B	147	ARG	2.5
1	B	616	MET	2.4
1	A	61	ARG	2.4
1	B	142	LEU	2.4
1	A	75	ASN	2.4
1	A	114	ILE	2.4
1	B	279	VAL	2.4
1	A	74	ASN	2.4
1	B	99	GLY	2.3
1	B	66	HIS	2.3
1	B	536	LYS	2.3
1	A	142	LEU	2.3
1	A	99	GLY	2.3
1	A	135	TYR	2.3
1	A	100	HIS	2.2
1	B	336	ARG	2.1
1	B	160	VAL	2.1
1	A	388	GLN	2.1
1	A	389	ILE	2.1
1	A	86	SER	2.1

Continued on next page...

Continued from previous page...

Mol	Chain	Res	Type	RSRZ
1	A	103	ASN	2.1
1	B	334	SER	2.1
1	A	160	VAL	2.1
1	A	77	LEU	2.0
1	B	502	LYS	2.0
1	A	289	ALA	2.0

6.2 Non-standard residues in protein, DNA, RNA chains [i](#)

There are no non-standard protein/DNA/RNA residues in this entry.

6.3 Carbohydrates [i](#)

There are no carbohydrates in this entry.

6.4 Ligands [i](#)

In the following table, the Atoms column lists the number of modelled atoms in the group and the number defined in the chemical component dictionary. LLDF column lists the quality of electron density of the group with respect to its neighbouring residues in protein, DNA or RNA chains. The B-factors column lists the minimum, median, 95th percentile and maximum values of B factors of atoms in the group. The column labelled 'Q< 0.9' lists the number of atoms with occupancy less than 0.9.

Mol	Type	Chain	Res	Atoms	RSCC	RSR	LLDF	B-factors(\AA^2)	Q<0.9
2	ACF	A	800	26/26	0.88	0.18	2.67	11,23,28,32	0

6.5 Other polymers [i](#)

There are no such residues in this entry.