



# Full wwPDB X-ray Structure Validation Report ⓘ

Feb 1, 2016 – 08:50 AM GMT

PDB ID : 3G8O  
Title : Progesterone Receptor with bound Pyrrolidine 1  
Authors : Thompson, S.K.; Washburn, D.G.; Madauss, K.P.; Williams, S.P.; Stewart, E.L.  
Deposited on : 2009-02-12  
Resolution : 1.90 Å(reported)

This is a Full wwPDB X-ray Structure Validation Report for a publicly released PDB entry.  
We welcome your comments at [validation@mail.wwpdb.org](mailto:validation@mail.wwpdb.org)  
A user guide is available at  
<http://wwpdb.org/validation/2016/XrayValidationReportHelp>  
with specific help available everywhere you see the ⓘ symbol.

---

The following versions of software and data (see [references ⓘ](#)) were used in the production of this report:

MolProbity : 4.02b-467  
Mogul : 1.7 (RC4), CSD as536be (2015)  
Xtriage (Phenix) : 1.9-1692  
EDS : rb-20026688  
Percentile statistics : 20151230.v01 (using entries in the PDB archive December 30th 2015)  
Refmac : 5.8.0135  
CCP4 : 6.5.0  
Ideal geometry (proteins) : Engh & Huber (2001)  
Ideal geometry (DNA, RNA) : Parkinson et al. (1996)  
Validation Pipeline (wwPDB-VP) : trunk26865

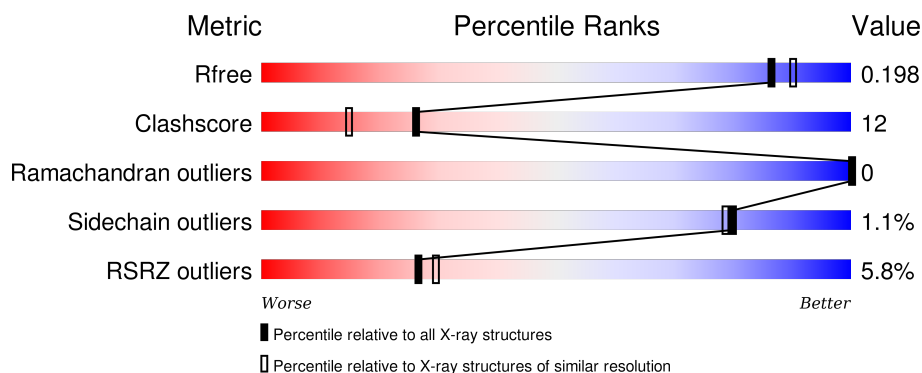
# 1 Overall quality at a glance

The following experimental techniques were used to determine the structure:

## *X-RAY DIFFRACTION*

The reported resolution of this entry is 1.90 Å.

Percentile scores (ranging between 0-100) for global validation metrics of the entry are shown in the following graphic. The table shows the number of entries on which the scores are based.



Metric	Whole archive (#Entries)	Similar resolution (#Entries, resolution range(Å))
$R_{free}$	91344	4755 (1.90-1.90)
Clashscore	102246	5398 (1.90-1.90)
Ramachandran outliers	100387	5338 (1.90-1.90)
Sidechain outliers	100360	5339 (1.90-1.90)
RSRZ outliers	91569	4766 (1.90-1.90)

The table below summarises the geometric issues observed across the polymeric chains and their fit to the electron density. The red, orange, yellow and green segments on the lower bar indicate the fraction of residues that contain outliers for  $\geq 3$ , 2, 1 and 0 types of geometric quality criteria. A grey segment represents the fraction of residues that are not modelled. The numeric value for each fraction is indicated below the corresponding segment, with a dot representing fractions  $\leq 5\%$ . The upper red bar (where present) indicates the fraction of residues that have poor fit to the electron density. The numeric value is given above the bar.

Mol	Chain	Length	Quality of chain
1	A	263	<div> <div>6%</div> <div> <div></div> <div>72%</div> <div>22%</div> <div>• 5%</div> </div> </div>
1	B	263	<div> <div>5%</div> <div> <div></div> <div>78%</div> <div>17%</div> <div>5%</div> </div> </div>

## 2 Entry composition [i](#)

There are 4 unique types of molecules in this entry. The entry contains 4388 atoms, of which 0 are hydrogens and 0 are deuteriums.

In the tables below, the ZeroOcc column contains the number of atoms modelled with zero occupancy, the AltConf column contains the number of residues with at least one atom in alternate conformation and the Trace column contains the number of residues modelled with at most 2 atoms.

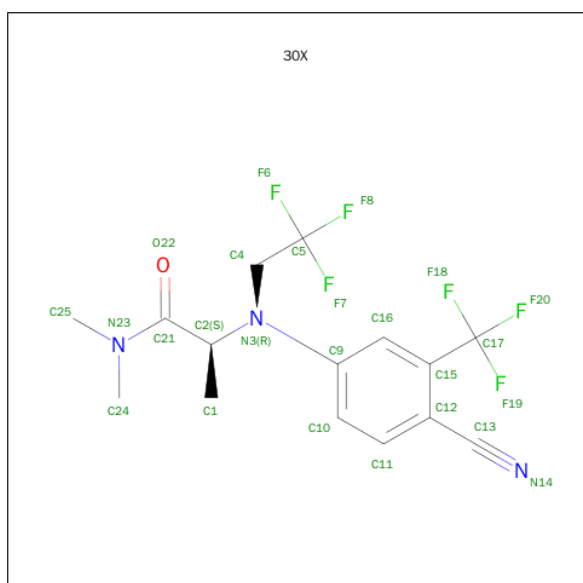
- Molecule 1 is a protein called Progesterone receptor.

Mol	Chain	Residues	Atoms					ZeroOcc	AltConf	Trace
1	A	250	Total	C	N	O	S	0	0	0
			1982	1287	325	356	14			
1	B	250	Total	C	N	O	S	0	2	0
			1999	1297	329	359	14			

There are 4 discrepancies between the modelled and reference sequences:

Chain	Residue	Modelled	Actual	Comment	Reference
A	671	GLY	-	EXPRESSION TAG	UNP P06401
A	672	SER	-	EXPRESSION TAG	UNP P06401
B	671	GLY	-	EXPRESSION TAG	UNP P06401
B	672	SER	-	EXPRESSION TAG	UNP P06401

- Molecule 2 is N 2 -[4-CYANO-3-(TRIFLUOROMETHYL)PHENYL]-N,N-DIMETHYL-N 2 -(2,2,2-TRIFLUOROETHYL)-L-ALANINAMIDE (three-letter code: 30X) (formula: C<sub>15</sub>H<sub>15</sub>F<sub>6</sub>N<sub>3</sub>O).



Mol	Chain	Residues	Atoms					ZeroOcc	AltConf
2	A	1	Total	C	F	N	O	0	0
			25	15	6	3	1		
2	B	1	Total	C	F	N	O	0	0
			25	15	6	3	1		

- Molecule 3 is SULFATE ION (three-letter code: SO4) (formula: O<sub>4</sub>S).



Mol	Chain	Residues	Atoms			ZeroOcc	AltConf
3	B	1	Total	O	S	0	0
			5	4	1		

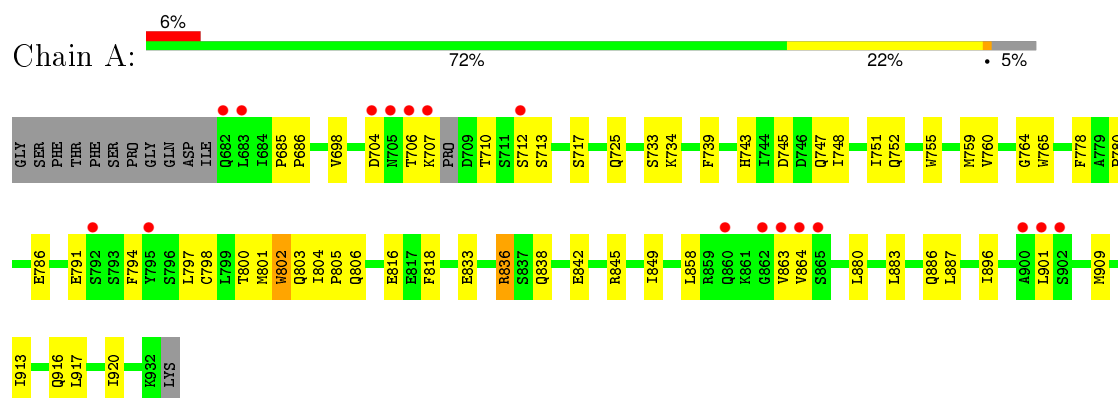
- Molecule 4 is water.

Mol	Chain	Residues	Atoms		ZeroOcc	AltConf
4	A	167	Total	O	0	0
			167	167		
4	B	185	Total	O	0	0
			185	185		

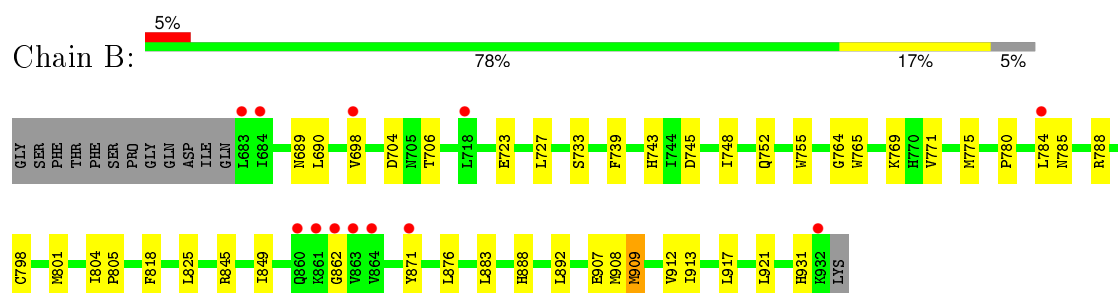
### 3 Residue-property plots [i](#)

These plots are drawn for all protein, RNA and DNA chains in the entry. The first graphic for a chain summarises the proportions of errors displayed in the second graphic. The second graphic shows the sequence view annotated by issues in geometry and electron density. Residues are color-coded according to the number of geometric quality criteria for which they contain at least one outlier: green = 0, yellow = 1, orange = 2 and red = 3 or more. A red dot above a residue indicates a poor fit to the electron density ( $\text{RSRZ} > 2$ ). Stretches of 2 or more consecutive residues without any outlier are shown as a green connector. Residues present in the sample, but not in the model, are shown in grey.

#### • Molecule 1: Progesterone receptor



#### • Molecule 1: Progesterone receptor



## 4 Data and refinement statistics

Property	Value	Source
Space group	P 1 21 1	Depositor
Cell constants a, b, c, $\alpha$ , $\beta$ , $\gamma$	57.67Å 64.21Å 70.50Å 90.00° 96.01° 90.00°	Depositor
Resolution (Å)	20.00 – 1.90 19.87 – 1.90	Depositor EDS
% Data completeness (in resolution range)	95.4 (20.00-1.90) 95.4 (19.87-1.90)	Depositor EDS
$R_{merge}$	0.08	Depositor
$R_{sym}$	(Not available)	Depositor
$\langle I/\sigma(I) \rangle$ <sup>1</sup>	1.69 (at 1.90Å)	Xtriage
Refinement program	CNS	Depositor
R, $R_{free}$	0.204 , 0.241 0.204 , 0.198	Depositor DCC
$R_{free}$ test set	2797 reflections (7.81%)	DCC
Wilson B-factor (Å <sup>2</sup> )	20.8	Xtriage
Anisotropy	0.523	Xtriage
Bulk solvent $k_{sol}$ (e/Å <sup>3</sup> ), $B_{sol}$ (Å <sup>2</sup> )	0.36 , 49.4	EDS
Estimated twinning fraction	No twinning to report.	Xtriage
L-test for twinning <sup>2</sup>	$\langle  L  \rangle = 0.50$ , $\langle L^2 \rangle = 0.33$	Xtriage
Outliers	0 of 38617 reflections	Xtriage
$F_o, F_c$ correlation	0.95	EDS
Total number of atoms	4388	wwPDB-VP
Average B, all atoms (Å <sup>2</sup> )	25.0	wwPDB-VP

Xtriage's analysis on translational NCS is as follows: *The largest off-origin peak in the Patterson function is 6.05% of the height of the origin peak. No significant pseudotranslation is detected.*

<sup>1</sup>Intensities estimated from amplitudes.

<sup>2</sup>Theoretical values of  $\langle |L| \rangle$ ,  $\langle L^2 \rangle$  for acentric reflections are 0.5, 0.375 respectively for untwinned datasets, and 0.333, 0.2 for perfectly twinned datasets.

## 5 Model quality [i](#)

### 5.1 Standard geometry [i](#)

Bond lengths and bond angles in the following residue types are not validated in this section: 3OX, SO4

The Z score for a bond length (or angle) is the number of standard deviations the observed value is removed from the expected value. A bond length (or angle) with  $|Z| > 5$  is considered an outlier worth inspection. RMSZ is the root-mean-square of all Z scores of the bond lengths (or angles).

Mol	Chain	Bond lengths		Bond angles	
		RMSZ	$\# Z  > 5$	RMSZ	$\# Z  > 5$
1	A	0.31	0/2023	0.55	2/2740 (0.1%)
1	B	0.30	0/2052	0.56	0/2779
All	All	0.31	0/4075	0.55	2/5519 (0.0%)

There are no bond length outliers.

All (2) bond angle outliers are listed below:

Mol	Chain	Res	Type	Atoms	Z	Observed(°)	Ideal(°)
1	A	836	ARG	CG-CD-NE	-5.67	99.90	111.80
1	A	836	ARG	NE-CZ-NH2	-5.06	117.77	120.30

There are no chirality outliers.

There are no planarity outliers.

### 5.2 Too-close contacts [i](#)

In the following table, the Non-H and H(model) columns list the number of non-hydrogen atoms and hydrogen atoms in the chain respectively. The H(added) column lists the number of hydrogen atoms added and optimized by MolProbity. The Clashes column lists the number of clashes within the asymmetric unit, whereas Symm-Clashes lists symmetry related clashes.

Mol	Chain	Non-H	H(model)	H(added)	Clashes	Symm-Clashes
1	A	1982	0	2003	54	0
1	B	1999	0	2034	45	0
2	A	25	0	15	0	0
2	B	25	0	15	4	0
3	B	5	0	0	0	0
4	A	167	0	0	4	0
4	B	185	0	0	3	0

*Continued on next page...*

*Continued from previous page...*

Mol	Chain	Non-H	H(model)	H(added)	Clashes	Symm-Clashes
All	All	4388	0	4067	100	0

The all-atom clashscore is defined as the number of clashes found per 1000 atoms (including hydrogen atoms). The all-atom clashscore for this structure is 12.

All (100) close contacts within the same asymmetric unit are listed below, sorted by their clash magnitude.

Atom-1	Atom-2	Interatomic distance (Å)	Clash overlap (Å)
1:B:743:HIS:HD2	1:B:745:ASP:H	1.12	0.98
1:A:725:GLN:HB2	1:A:759:MET:HE2	1.45	0.96
1:A:797:LEU:HD11	1:A:887:LEU:HD23	1.50	0.93
1:B:764:GLY:HA2	1:B:805:PRO:HG3	1.56	0.85
1:B:775:MET:HE3	1:B:785:ASN:HB3	1.57	0.84
1:A:710:THR:HG22	1:A:713:SER:HB3	1.60	0.83
1:B:804:ILE:HB	1:B:805:PRO:HD3	1.62	0.81
1:B:743:HIS:CD2	1:B:745:ASP:H	1.98	0.79
1:A:800:THR:HA	1:A:803:GLN:HE21	1.48	0.77
1:A:755:TRP:HE1	1:A:759:MET:HE1	1.50	0.76
1:B:704:ASP:OD1	1:B:706:THR:HB	1.87	0.74
1:A:755:TRP:HE1	1:A:759:MET:CE	2.05	0.70
1:A:710:THR:HG22	1:A:713:SER:CB	2.23	0.69
1:B:775:MET:CE	1:B:785:ASN:HB3	2.24	0.67
1:A:764:GLY:HA2	1:A:805:PRO:HG3	1.76	0.67
1:B:784:LEU:HD22	1:B:788:ARG:HD3	1.79	0.65
1:A:743:HIS:CD2	1:A:836:ARG:HD3	2.33	0.63
1:A:804:ILE:HB	1:A:805:PRO:HD3	1.82	0.61
1:A:896:ILE:HD11	1:B:892:LEU:HD11	1.82	0.61
1:B:804:ILE:HD11	1:B:883:LEU:HD13	1.81	0.61
1:B:771:VAL:HG21	1:B:775:MET:HB2	1.83	0.60
1:A:710:THR:CG2	1:A:713:SER:HB3	2.31	0.60
1:A:755:TRP:NE1	1:A:759:MET:HE1	2.17	0.59
1:B:871:TYR:CD1	1:B:931:HIS:HE1	2.21	0.59
1:A:710:THR:HG23	1:A:713:SER:H	1.69	0.58
1:A:791:GLU:HG3	1:A:794:PHE:H	1.69	0.58
1:B:775:MET:HE3	4:B:232:HOH:O	2.05	0.57
1:B:909:MET:HE3	2:B:2:30X:H1	1.85	0.57
1:A:802:TRP:O	1:A:806:GLN:HG3	2.05	0.57
1:A:743:HIS:CD2	1:A:745:ASP:H	2.24	0.56
1:A:743:HIS:HD2	1:A:745:ASP:H	1.54	0.56
1:B:871:TYR:CD1	1:B:931:HIS:CE1	2.94	0.55
1:A:838:GLN:O	1:A:842:GLU:HG3	2.08	0.54

*Continued on next page...*



*Continued from previous page...*

Atom-1	Atom-2	Interatomic distance (Å)	Clash overlap (Å)
1:A:798:CYS:HA	1:A:801:MET:CE	2.37	0.54
1:B:723:GLU:O	1:B:727:LEU:HD13	2.07	0.54
1:A:755:TRP:NE1	1:A:759:MET:CE	2.68	0.54
1:A:778:PHE:HZ	1:A:801:MET:HE1	1.72	0.53
1:A:800:THR:CA	1:A:803:GLN:HE21	2.19	0.53
1:B:909:MET:HE2	1:B:913:ILE:HD11	1.90	0.53
1:B:743:HIS:HD2	1:B:745:ASP:N	1.92	0.52
1:B:862:GLY:HA3	4:B:309:HOH:O	2.09	0.52
1:B:888:HIS:CD2	1:B:917:LEU:HD21	2.46	0.51
1:A:725:GLN:CB	1:A:759:MET:HE2	2.31	0.51
1:B:784:LEU:HD22	1:B:788:ARG:CD	2.41	0.51
1:A:734:LYS:HD3	4:A:166:HOH:O	2.11	0.50
1:B:798:CYS:HA	1:B:801:MET:CE	2.41	0.50
1:B:748:ILE:O	1:B:752:GLN:HG3	2.12	0.50
1:A:747:GLN:O	1:A:751:ILE:HG12	2.11	0.50
1:B:876:LEU:C	1:B:876:LEU:HD23	2.33	0.49
1:A:886:GLN:HG2	4:A:390:HOH:O	2.12	0.48
1:A:833:GLU:OE2	1:A:833:GLU:N	2.42	0.48
1:A:797:LEU:CD1	1:A:887:LEU:HD23	2.34	0.47
1:A:706:THR:OG1	1:A:707:LYS:N	2.47	0.47
1:A:883:LEU:C	1:A:883:LEU:HD23	2.35	0.47
1:A:802:TRP:O	1:A:805:PRO:HD2	2.14	0.47
1:A:798:CYS:HA	1:A:801:MET:HE2	1.96	0.47
1:A:816:GLU:HG2	1:A:858:LEU:CD1	2.45	0.46
1:B:775:MET:CE	4:B:232:HOH:O	2.62	0.46
1:A:704:ASP:CB	4:A:163:HOH:O	2.64	0.46
1:B:909:MET:CE	2:B:2:30X:H1	2.45	0.46
1:B:917:LEU:HA	1:B:917:LEU:HD23	1.64	0.46
1:A:845:ARG:O	1:A:849:ILE:HG13	2.16	0.45
1:A:760:VAL:HG22	1:A:804:ILE:HD12	1.98	0.45
1:A:733:SER:HB2	1:A:739:PHE:CD2	2.51	0.45
1:B:845:ARG:O	1:B:849:ILE:HG13	2.16	0.45
1:B:765:TRP:CZ2	1:B:769[A]:LYS:HD2	2.51	0.45
1:B:909:MET:CE	1:B:913:ILE:HD11	2.47	0.45
1:A:802:TRP:C	1:A:805:PRO:HD2	2.37	0.45
1:A:913:ILE:HA	1:A:917:LEU:HG	1.97	0.45
1:B:913:ILE:HG23	1:B:917:LEU:HD12	1.98	0.44
1:B:698:VAL:HG21	1:B:780:PRO:HG2	1.99	0.44
2:B:2:30X:H16	2:B:2:30X:H4	1.79	0.44
1:B:690:LEU:C	1:B:690:LEU:HD23	2.38	0.44
1:B:804:ILE:HB	1:B:805:PRO:CD	2.42	0.44

*Continued on next page...*

*Continued from previous page...*

Atom-1	Atom-2	Interatomic distance (Å)	Clash overlap (Å)
1:B:765:TRP:HB2	1:B:818:PHE:CE1	2.53	0.44
1:A:880:LEU:HD23	1:A:880:LEU:HA	1.85	0.44
1:A:863:VAL:HG23	1:A:864:VAL:N	2.33	0.43
1:A:786:GLU:HB3	4:A:360:HOH:O	2.18	0.43
1:A:748:ILE:O	1:A:752:GLN:HG3	2.19	0.43
1:A:712:SER:OG	1:A:901:LEU:O	2.21	0.43
1:A:863:VAL:CG2	1:A:864:VAL:N	2.81	0.42
1:A:798:CYS:HA	1:A:801:MET:HE3	2.00	0.42
1:B:909:MET:O	1:B:912:VAL:HG22	2.20	0.42
1:B:784:LEU:CD2	1:B:788:ARG:HD3	2.47	0.42
1:A:685:PRO:HA	1:A:686:PRO:HD3	1.93	0.41
1:A:836:ARG:HE	1:A:836:ARG:HB3	1.60	0.41
1:A:698:VAL:HG21	1:A:780:PRO:HG2	2.01	0.41
1:A:765:TRP:HB2	1:A:818:PHE:CE1	2.56	0.41
1:B:913:ILE:O	1:B:917:LEU:HB2	2.20	0.41
1:B:798:CYS:HA	1:B:801:MET:HE3	2.01	0.41
1:B:752:GLN:O	1:B:755:TRP:HD1	2.04	0.41
1:A:916:GLN:O	1:A:920:ILE:HG13	2.20	0.41
1:B:825:LEU:HA	1:B:825:LEU:HD23	1.93	0.41
1:B:733:SER:HB2	1:B:739:PHE:CD2	2.56	0.41
1:B:907:GLU:HG2	1:B:908:MET:SD	2.61	0.41
1:A:698:VAL:CG2	1:A:780:PRO:HG2	2.51	0.40
1:B:921:LEU:HD23	1:B:921:LEU:HA	1.96	0.40
2:B:2:30X:H4A	2:B:2:30X:H1A	1.86	0.40
1:A:778:PHE:CZ	1:A:801:MET:HE1	2.53	0.40

There are no symmetry-related clashes.

## 5.3 Torsion angles ⓘ

### 5.3.1 Protein backbone ⓘ

In the following table, the Percentiles column shows the percent Ramachandran outliers of the chain as a percentile score with respect to all X-ray entries followed by that with respect to entries of similar resolution.

The Analysed column shows the number of residues for which the backbone conformation was analysed, and the total number of residues.

Mol	Chain	Analysed	Favoured	Allowed	Outliers	Percentiles	
1	A	246/263 (94%)	235 (96%)	11 (4%)	0	100	100

*Continued on next page...*

*Continued from previous page...*

Mol	Chain	Analysed	Favoured	Allowed	Outliers	Percentiles	
1	B	250/263 (95%)	241 (96%)	9 (4%)	0	100	100
All	All	496/526 (94%)	476 (96%)	20 (4%)	0	100	100

There are no Ramachandran outliers to report.

### 5.3.2 Protein sidechains ⓘ

In the following table, the Percentiles column shows the percent sidechain outliers of the chain as a percentile score with respect to all X-ray entries followed by that with respect to entries of similar resolution.

The Analysed column shows the number of residues for which the sidechain conformation was analysed, and the total number of residues.

Mol	Chain	Analysed	Rotameric	Outliers	Percentiles	
1	A	222/244 (91%)	219 (99%)	3 (1%)	74	71
1	B	227/244 (93%)	225 (99%)	2 (1%)	84	83
All	All	449/488 (92%)	444 (99%)	5 (1%)	80	79

All (5) residues with a non-rotameric sidechain are listed below:

Mol	Chain	Res	Type
1	A	717	SER
1	A	802	TRP
1	A	909	MET
1	B	689	ASN
1	B	909	MET

Some sidechains can be flipped to improve hydrogen bonding and reduce clashes. All (13) such sidechains are listed below:

Mol	Chain	Res	Type
1	A	725	GLN
1	A	741	ASN
1	A	743	HIS
1	A	803	GLN
1	A	812	GLN
1	A	815	GLN
1	A	897	GLN
1	A	931	HIS

*Continued on next page...*

*Continued from previous page...*

Mol	Chain	Res	Type
1	B	725	GLN
1	B	743	HIS
1	B	803	GLN
1	B	815	GLN
1	B	931	HIS

### 5.3.3 RNA [i](#)

There are no RNA molecules in this entry.

## 5.4 Non-standard residues in protein, DNA, RNA chains [i](#)

There are no non-standard protein/DNA/RNA residues in this entry.

## 5.5 Carbohydrates [i](#)

There are no carbohydrates in this entry.

## 5.6 Ligand geometry [i](#)

3 ligands are modelled in this entry.

In the following table, the Counts columns list the number of bonds (or angles) for which Mogul statistics could be retrieved, the number of bonds (or angles) that are observed in the model and the number of bonds (or angles) that are defined in the chemical component dictionary. The Link column lists molecule types, if any, to which the group is linked. The Z score for a bond length (or angle) is the number of standard deviations the observed value is removed from the expected value. A bond length (or angle) with  $|Z| > 2$  is considered an outlier worth inspection. RMSZ is the root-mean-square of all Z scores of the bond lengths (or angles).

Mol	Type	Chain	Res	Link	Bond lengths			Bond angles		
					Counts	RMSZ	$\# Z  > 2$	Counts	RMSZ	$\# Z  > 2$
2	30X	A	1	-	25,25,25	2.06	11 (44%)	34,38,38	1.04	1 (2%)
3	SO4	B	1	-	4,4,4	0.13	0	6,6,6	0.07	0
2	30X	B	2	-	25,25,25	1.93	11 (44%)	34,38,38	0.91	0

In the following table, the Chirals column lists the number of chiral outliers, the number of chiral centers analysed, the number of these observed in the model and the number defined in the chemical component dictionary. Similar counts are reported in the Torsion and Rings columns. '-' means no outliers of that kind were identified.

Mol	Type	Chain	Res	Link	Chirals	Torsions	Rings
2	30X	A	1	-	-	0/28/29/29	0/1/1/1
3	SO4	B	1	-	-	0/0/0/0	0/0/0/0
2	30X	B	2	-	-	0/28/29/29	0/1/1/1

All (22) bond length outliers are listed below:

Mol	Chain	Res	Type	Atoms	Z	Observed(Å)	Ideal(Å)
2	B	2	30X	C16-C15	2.02	1.42	1.39
2	A	1	30X	C11-C10	2.04	1.42	1.38
2	A	1	30X	C16-C15	2.05	1.42	1.39
2	A	1	30X	C21-N23	2.19	1.37	1.34
2	B	2	30X	C17-C15	2.20	1.55	1.50
2	B	2	30X	C2-N3	2.22	1.51	1.46
2	B	2	30X	C11-C10	2.31	1.42	1.38
2	A	1	30X	C2-N3	2.31	1.51	1.46
2	B	2	30X	C10-C9	2.32	1.43	1.39
2	A	1	30X	C10-C9	2.35	1.43	1.39
2	B	2	30X	C21-N23	2.60	1.38	1.34
2	B	2	30X	C4-C5	2.67	1.54	1.50
2	A	1	30X	C17-C15	2.68	1.56	1.50
2	A	1	30X	C16-C9	2.86	1.44	1.39
2	B	2	30X	C16-C9	2.91	1.44	1.39
2	A	1	30X	C4-C5	3.08	1.54	1.50
2	B	2	30X	C12-C15	3.25	1.46	1.40
2	B	2	30X	C9-N3	3.35	1.48	1.39
2	A	1	30X	C9-N3	3.56	1.49	1.39
2	A	1	30X	C12-C15	3.78	1.47	1.40
2	B	2	30X	C4-N3	4.21	1.50	1.45
2	A	1	30X	C4-N3	4.67	1.50	1.45

All (1) bond angle outliers are listed below:

Mol	Chain	Res	Type	Atoms	Z	Observed(°)	Ideal(°)
2	A	1	30X	C17-C15-C12	2.47	124.60	120.73

There are no chirality outliers.

There are no torsion outliers.

There are no ring outliers.

1 monomer is involved in 4 short contacts:

Mol	Chain	Res	Type	Clashes	Symm-Clashes
2	B	2	30X	4	0

## 5.7 Other polymers

There are no such residues in this entry.

## 5.8 Polymer linkage issues

There are no chain breaks in this entry.

## 6 Fit of model and data ⓘ

### 6.1 Protein, DNA and RNA chains ⓘ

In the following table, the column labelled ‘#RSRZ> 2’ contains the number (and percentage) of RSRZ outliers, followed by percent RSRZ outliers for the chain as percentile scores relative to all X-ray entries and entries of similar resolution. The OWAB column contains the minimum, median, 95<sup>th</sup> percentile and maximum values of the occupancy-weighted average B-factor per residue. The column labelled ‘Q< 0.9’ lists the number of (and percentage) of residues with an average occupancy less than 0.9.

Mol	Chain	Analysed	<RSRZ>	#RSRZ>2		OWAB(Å <sup>2</sup> )	Q<0.9
1	A	250/263 (95%)	0.40	17 (6%)	20 23	16, 24, 47, 68	0
1	B	250/263 (95%)	0.21	12 (4%)	34 37	16, 23, 34, 49	0
All	All	500/526 (95%)	0.31	29 (5%)	26 29	16, 23, 42, 68	0

All (29) RSRZ outliers are listed below:

Mol	Chain	Res	Type	RSRZ
1	B	860	GLN	6.3
1	A	706	THR	5.6
1	A	704	ASP	5.2
1	A	683	LEU	4.6
1	A	682	GLN	4.5
1	B	871	TYR	4.0
1	A	900	ALA	4.0
1	A	860	GLN	3.7
1	A	864	VAL	3.7
1	B	862	GLY	3.5
1	A	792	SER	3.5
1	A	862	GLY	3.4
1	B	683	LEU	3.2
1	A	863	VAL	3.1
1	B	932	LYS	3.0
1	A	707	LYS	2.9
1	B	784	LEU	2.8
1	A	795	TYR	2.7
1	A	865	SER	2.7
1	B	863	VAL	2.6
1	A	705	ASN	2.6
1	B	864	VAL	2.6
1	A	902	SER	2.5
1	B	684	ILE	2.3

*Continued on next page...*

*Continued from previous page...*

Mol	Chain	Res	Type	RSRZ
1	B	718	LEU	2.2
1	B	698	VAL	2.2
1	A	712	SER	2.2
1	A	901	LEU	2.2
1	B	861	LYS	2.0

## 6.2 Non-standard residues in protein, DNA, RNA chains [i](#)

There are no non-standard protein/DNA/RNA residues in this entry.

## 6.3 Carbohydrates [i](#)

There are no carbohydrates in this entry.

## 6.4 Ligands [i](#)

In the following table, the Atoms column lists the number of modelled atoms in the group and the number defined in the chemical component dictionary. LLDF column lists the quality of electron density of the group with respect to its neighbouring residues in protein, DNA or RNA chains. The B-factors column lists the minimum, median, 95<sup>th</sup> percentile and maximum values of B factors of atoms in the group. The column labelled 'Q < 0.9' lists the number of atoms with occupancy less than 0.9.

Mol	Type	Chain	Res	Atoms	RSCC	RSR	LLDF	B-factors(Å <sup>2</sup> )	Q<0.9
2	3OX	A	1	25/25	0.92	0.14	1.82	20,23,27,31	0
2	3OX	B	2	25/25	0.93	0.12	0.41	15,24,27,28	0
3	SO4	B	1	5/5	0.99	0.08	-0.67	30,30,32,32	0

## 6.5 Other polymers [i](#)

There are no such residues in this entry.