



# Full wwPDB X-ray Structure Validation Report ⓘ

Feb 1, 2016 – 08:54 AM GMT

PDB ID : 3GHW  
Title : Human dihydrofolate reductase inhibitor complex  
Authors : Cody, V.  
Deposited on : 2009-03-04  
Resolution : 1.24 Å(reported)

This is a Full wwPDB X-ray Structure Validation Report for a publicly released PDB entry.  
We welcome your comments at [validation@mail.wwpdb.org](mailto:validation@mail.wwpdb.org)  
A user guide is available at  
<http://wwpdb.org/validation/2016/XrayValidationReportHelp>  
with specific help available everywhere you see the ⓘ symbol.

---

The following versions of software and data (see [references ⓘ](#)) were used in the production of this report:

MolProbity : 4.02b-467  
Mogul : 1.7 (RC4), CSD as536be (2015)  
Xtriage (Phenix) : 1.9-1692  
EDS : rb-20026688  
Percentile statistics : 20151230.v01 (using entries in the PDB archive December 30th 2015)  
Refmac : 5.8.0135  
CCP4 : 6.5.0  
Ideal geometry (proteins) : Engh & Huber (2001)  
Ideal geometry (DNA, RNA) : Parkinson et al. (1996)  
Validation Pipeline (wwPDB-VP) : trunk26865

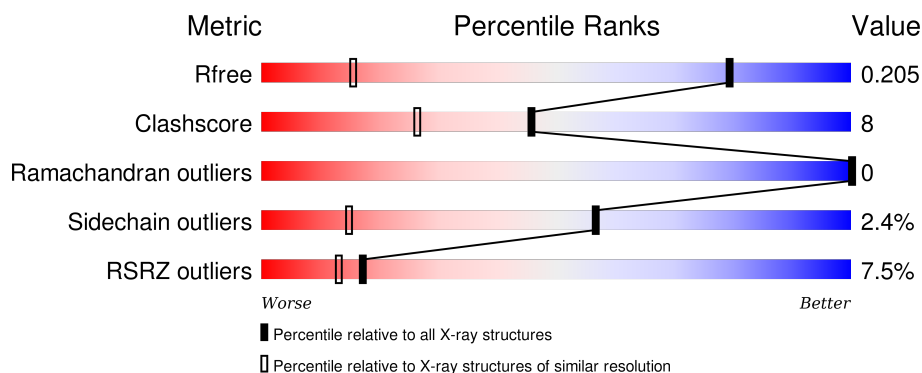
# 1 Overall quality at a glance

The following experimental techniques were used to determine the structure:

## *X-RAY DIFFRACTION*


The reported resolution of this entry is 1.24 Å.

Percentile scores (ranging between 0-100) for global validation metrics of the entry are shown in the following graphic. The table shows the number of entries on which the scores are based.



Metric	Whole archive (#Entries)	Similar resolution (#Entries, resolution range(Å))
$R_{free}$	91344	1229 (1.28-1.20)
Clashscore	102246	1327 (1.28-1.20)
Ramachandran outliers	100387	1274 (1.28-1.20)
Sidechain outliers	100360	1272 (1.28-1.20)
RSRZ outliers	91569	1233 (1.28-1.20)

The table below summarises the geometric issues observed across the polymeric chains and their fit to the electron density. The red, orange, yellow and green segments on the lower bar indicate the fraction of residues that contain outliers for  $\geq 3$ , 2, 1 and 0 types of geometric quality criteria. A grey segment represents the fraction of residues that are not modelled. The numeric value for each fraction is indicated below the corresponding segment, with a dot representing fractions  $\leq 5\%$ . The upper red bar (where present) indicates the fraction of residues that have poor fit to the electron density. The numeric value is given above the bar.

Mol	Chain	Length	Quality of chain
1	A	186	

The following table lists non-polymeric compounds, carbohydrate monomers and non-standard residues in protein, DNA, RNA chains that are outliers for geometric or electron-density-fit criteria:

Mol	Type	Chain	Res	Chirality	Geometry	Clashes	Electron density
4	SO4	A	189	-	-	-	X

## 2 Entry composition [i](#)

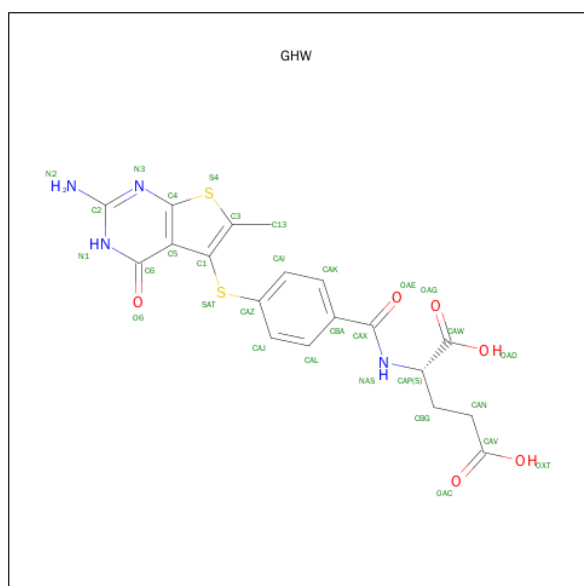
There are 5 unique types of molecules in this entry. The entry contains 1913 atoms, of which 0 are hydrogens and 0 are deuteriums.

In the tables below, the ZeroOcc column contains the number of atoms modelled with zero occupancy, the AltConf column contains the number of residues with at least one atom in alternate conformation and the Trace column contains the number of residues modelled with at most 2 atoms.

- Molecule 1 is a protein called Dihydrofolate reductase.

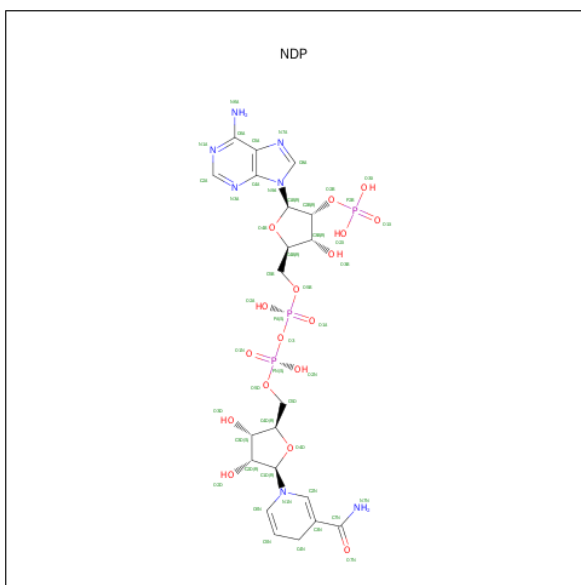
Mol	Chain	Residues	Atoms					ZeroOcc	AltConf	Trace
1	A	186	Total	C	N	O	S	0	0	0
			1502	963	253	279	7			

- Molecule 2 is N-({4-[(2-AMINO-6-METHYL-4-OXO-3,4-DIHYDROTHIENO[2,3-D]PYRIMIDIN-5-YL)SULFANYL]PHENYL}CARBONYL)-L-GLUTAMIC ACID (three-letter code: GHW) (formula: C<sub>19</sub>H<sub>18</sub>N<sub>4</sub>O<sub>6</sub>S<sub>2</sub>).



Mol	Chain	Residues	Atoms					ZeroOcc	AltConf
2	A	1	Total	C	N	O	S	0	0
			31	19	4	6	2		

- Molecule 3 is NADPH DIHYDRO-NICOTINAMIDE-ADENINE-DINUCLEOTIDE PHOSPHATE (three-letter code: NDP) (formula: C<sub>21</sub>H<sub>30</sub>N<sub>7</sub>O<sub>17</sub>P<sub>3</sub>).



Mol	Chain	Residues	Atoms				ZeroOcc	AltConf
3	A	1	Total	C	N	O	P	
			48	21	7	17	3	

- Molecule 4 is SULFATE ION (three-letter code: SO4) (formula: O<sub>4</sub>S).



Mol	Chain	Residues	Atoms		ZeroOcc	AltConf
4	A	1	Total	O S		
			5	4 1	0	0

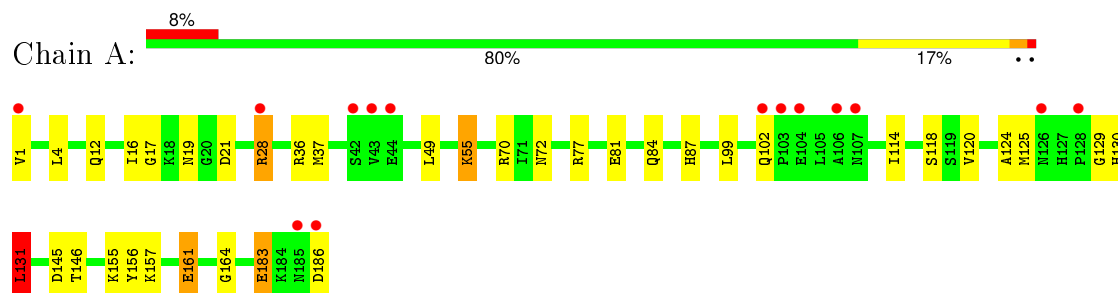
- Molecule 5 is water.

Mol	Chain	Residues	Atoms		ZeroOcc	AltConf
5	A	327	Total 327	O 327	0	0

### 3 Residue-property plots

These plots are drawn for all protein, RNA and DNA chains in the entry. The first graphic for a chain summarises the proportions of errors displayed in the second graphic. The second graphic shows the sequence view annotated by issues in geometry and electron density. Residues are color-coded according to the number of geometric quality criteria for which they contain at least one outlier: green = 0, yellow = 1, orange = 2 and red = 3 or more. A red dot above a residue indicates a poor fit to the electron density ( $RSRZ > 2$ ). Stretches of 2 or more consecutive residues without any outlier are shown as a green connector. Residues present in the sample, but not in the model, are shown in grey.

- Molecule 1: Dihydrofolate reductase



## 4 Data and refinement statistics

Property	Value	Source
Space group	H 3	Depositor
Cell constants a, b, c, $\alpha$ , $\beta$ , $\gamma$	84.65Å 84.65Å 78.06Å 90.00° 90.00° 120.00°	Depositor
Resolution (Å)	22.17 – 1.24 22.17 – 1.24	Depositor EDS
% Data completeness (in resolution range)	100.0 (22.17-1.24) 100.0 (22.17-1.24)	Depositor EDS
$R_{merge}$	0.11	Depositor
$R_{sym}$	0.04	Depositor
$\langle I/\sigma(I) \rangle$ <sup>1</sup>	2.49 (at 1.24Å)	Xtriage
Refinement program	REFMAC 5.5.0088	Depositor
R, $R_{free}$	0.180 , 0.204 0.180 , 0.205	Depositor DCC
$R_{free}$ test set	2964 reflections (5.28%)	DCC
Wilson B-factor (Å <sup>2</sup> )	13.8	Xtriage
Anisotropy	0.079	Xtriage
Bulk solvent $k_{sol}$ (e/Å <sup>3</sup> ), $B_{sol}$ (Å <sup>2</sup> )	0.38 , 48.8	EDS
Estimated twinning fraction	0.025 for h,-h-k,-l	Xtriage
L-test for twinning <sup>2</sup>	$\langle  L  \rangle = 0.49$ , $\langle L^2 \rangle = 0.32$	Xtriage
Outliers	0 of 59523 reflections	Xtriage
$F_o, F_c$ correlation	0.97	EDS
Total number of atoms	1913	wwPDB-VP
Average B, all atoms (Å <sup>2</sup> )	17.0	wwPDB-VP

Xtriage's analysis on translational NCS is as follows: *The largest off-origin peak in the Patterson function is 6.49% of the height of the origin peak. No significant pseudotranslation is detected.*

<sup>1</sup>Intensities estimated from amplitudes.

<sup>2</sup>Theoretical values of  $\langle |L| \rangle$ ,  $\langle L^2 \rangle$  for acentric reflections are 0.5, 0.375 respectively for untwinned datasets, and 0.333, 0.2 for perfectly twinned datasets.

## 5 Model quality

### 5.1 Standard geometry

Bond lengths and bond angles in the following residue types are not validated in this section: NDP, GHW, SO4

The Z score for a bond length (or angle) is the number of standard deviations the observed value is removed from the expected value. A bond length (or angle) with  $|Z| > 5$  is considered an outlier worth inspection. RMSZ is the root-mean-square of all Z scores of the bond lengths (or angles).

Mol	Chain	Bond lengths		Bond angles	
		RMSZ	$\# Z  > 5$	RMSZ	$\# Z  > 5$
1	A	1.50	10/1537 (0.7%)	1.34	11/2073 (0.5%)

All (10) bond length outliers are listed below:

Mol	Chain	Res	Type	Atoms	Z	Observed(Å)	Ideal(Å)
1	A	55	LYS	CB-CG	-9.61	1.26	1.52
1	A	81	GLU	CD-OE1	-8.54	1.16	1.25
1	A	120	VAL	CB-CG1	-8.50	1.35	1.52
1	A	55	LYS	CG-CD	-8.25	1.24	1.52
1	A	161	GLU	CG-CD	8.15	1.64	1.51
1	A	183	GLU	CD-OE2	-8.13	1.16	1.25
1	A	129	GLY	N-CA	-7.01	1.35	1.46
1	A	118	SER	CB-OG	-6.05	1.34	1.42
1	A	156	TYR	CE1-CZ	-5.61	1.31	1.38
1	A	155	LYS	CB-CG	-5.13	1.38	1.52

All (11) bond angle outliers are listed below:

Mol	Chain	Res	Type	Atoms	Z	Observed(°)	Ideal(°)
1	A	125	MET	CG-SD-CE	-18.46	70.67	100.20
1	A	55	LYS	CB-CG-CD	-9.74	86.28	111.60
1	A	37	MET	CG-SD-CE	-7.66	87.95	100.20
1	A	70	ARG	NE-CZ-NH1	7.30	123.95	120.30
1	A	12	GLN	CA-CB-CG	7.08	128.99	113.40
1	A	131	LEU	CB-CG-CD1	-6.46	100.02	111.00
1	A	21	ASP	CB-CG-OD1	6.20	123.88	118.30
1	A	36	ARG	NE-CZ-NH2	5.95	123.27	120.30
1	A	70	ARG	NE-CZ-NH2	-5.85	117.38	120.30
1	A	77	ARG	NE-CZ-NH2	5.81	123.21	120.30
1	A	49	LEU	CB-CG-CD1	-5.29	102.02	111.00



There are no chirality outliers.

There are no planarity outliers.

## 5.2 Too-close contacts

In the following table, the Non-H and H(model) columns list the number of non-hydrogen atoms and hydrogen atoms in the chain respectively. The H(added) column lists the number of hydrogen atoms added and optimized by MolProbity. The Clashes column lists the number of clashes within the asymmetric unit, whereas Symm-Clashes lists symmetry related clashes.

Mol	Chain	Non-H	H(model)	H(added)	Clashes	Symm-Clashes
1	A	1502	0	1511	23	0
2	A	31	0	16	1	0
3	A	48	0	26	2	0
4	A	5	0	0	0	0
5	A	327	0	0	13	0
All	All	1913	0	1553	24	0

The all-atom clashscore is defined as the number of clashes found per 1000 atoms (including hydrogen atoms). The all-atom clashscore for this structure is 8.

All (24) close contacts within the same asymmetric unit are listed below, sorted by their clash magnitude.

Atom-1	Atom-2	Interatomic distance (Å)	Clash overlap (Å)
1:A:130:HIS:HE1	1:A:183:GLU:OE1	1.32	1.12
1:A:84:GLN:HG2	5:A:349:HOH:O	1.62	0.98
1:A:102:GLN:HB2	5:A:466:HOH:O	1.68	0.94
1:A:130:HIS:CE1	1:A:183:GLU:OE1	2.21	0.92
1:A:72:ASN:H	1:A:87:HIS:HD2	1.11	0.91
1:A:1:VAL:HG12	5:A:350:HOH:O	1.78	0.83
1:A:72:ASN:H	1:A:87:HIS:CD2	2.00	0.79
1:A:145:ASP:OD1	1:A:146:THR:HG23	1.92	0.70
1:A:186:ASP:HB3	5:A:335:HOH:O	2.01	0.61
1:A:1:VAL:CG1	5:A:350:HOH:O	2.42	0.59
1:A:84:GLN:CG	5:A:349:HOH:O	2.37	0.57
1:A:161:GLU:OE2	5:A:459:HOH:O	2.18	0.54
2:A:187:GHW:C3	3:A:188:NDP:H42N	2.38	0.54
1:A:161:GLU:CG	5:A:459:HOH:O	2.57	0.53
1:A:164:GLY:HA3	5:A:238:HOH:O	2.09	0.53
1:A:28:ARG:HD3	5:A:346:HOH:O	2.09	0.51
1:A:19:ASN:HA	5:A:506:HOH:O	2.12	0.50
1:A:157:LYS:HE2	5:A:493:HOH:O	2.13	0.48

*Continued on next page...*

*Continued from previous page...*

Atom-1	Atom-2	Interatomic distance (Å)	Clash overlap (Å)
1:A:4:LEU:HG	1:A:131:LEU:HD21	1.96	0.46
1:A:28:ARG:CD	5:A:346:HOH:O	2.63	0.46
1:A:17:GLY:CA	1:A:146:THR:OG1	2.64	0.46
1:A:17:GLY:HA3	1:A:146:THR:OG1	2.18	0.42
1:A:16:ILE:O	3:A:188:NDP:H2N	2.20	0.42
1:A:114:ILE:HD13	1:A:124:ALA:HB2	2.03	0.41

There are no symmetry-related clashes.

## 5.3 Torsion angles [i](#)

### 5.3.1 Protein backbone [i](#)

In the following table, the Percentiles column shows the percent Ramachandran outliers of the chain as a percentile score with respect to all X-ray entries followed by that with respect to entries of similar resolution.

The Analysed column shows the number of residues for which the backbone conformation was analysed, and the total number of residues.

Mol	Chain	Analysed	Favoured	Allowed	Outliers	Percentiles	
1	A	184/186 (99%)	182 (99%)	2 (1%)	0	100	100

There are no Ramachandran outliers to report.

### 5.3.2 Protein sidechains [i](#)

In the following table, the Percentiles column shows the percent sidechain outliers of the chain as a percentile score with respect to all X-ray entries followed by that with respect to entries of similar resolution.

The Analysed column shows the number of residues for which the sidechain conformation was analysed, and the total number of residues.

Mol	Chain	Analysed	Rotameric	Outliers	Percentiles	
1	A	168/168 (100%)	164 (98%)	4 (2%)	57	15

All (4) residues with a non-rotameric sidechain are listed below:

Mol	Chain	Res	Type
1	A	28	ARG
1	A	55	LYS
1	A	99	LEU
1	A	131	LEU

Some sidechains can be flipped to improve hydrogen bonding and reduce clashes. All (4) such sidechains are listed below:

Mol	Chain	Res	Type
1	A	84	GLN
1	A	87	HIS
1	A	130	HIS
1	A	185	ASN

### 5.3.3 RNA [i](#)

There are no RNA molecules in this entry.

## 5.4 Non-standard residues in protein, DNA, RNA chains [i](#)

There are no non-standard protein/DNA/RNA residues in this entry.

## 5.5 Carbohydrates [i](#)

There are no carbohydrates in this entry.

## 5.6 Ligand geometry [i](#)

3 ligands are modelled in this entry.

In the following table, the Counts columns list the number of bonds (or angles) for which Mogul statistics could be retrieved, the number of bonds (or angles) that are observed in the model and the number of bonds (or angles) that are defined in the chemical component dictionary. The Link column lists molecule types, if any, to which the group is linked. The Z score for a bond length (or angle) is the number of standard deviations the observed value is removed from the expected value. A bond length (or angle) with  $|Z| > 2$  is considered an outlier worth inspection. RMSZ is the root-mean-square of all Z scores of the bond lengths (or angles).

Mol	Type	Chain	Res	Link	Bond lengths			Bond angles		
					Counts	RMSZ	$\# Z  > 2$	Counts	RMSZ	$\# Z  > 2$
2	GHW	A	187	-	23,33,33	1.69	7 (30%)	21,47,47	3.54	5 (23%)

Mol	Type	Chain	Res	Link	Bond lengths			Bond angles		
					Counts	RMSZ	# Z  > 2	Counts	RMSZ	# Z  > 2
3	NDP	A	188	-	42,52,52	2.02	15 (35%)	55,80,80	1.76	10 (18%)
4	SO4	A	189	-	4,4,4	0.34	0	6,6,6	0.21	0

In the following table, the Chirals column lists the number of chiral outliers, the number of chiral centers analysed, the number of these observed in the model and the number defined in the chemical component dictionary. Similar counts are reported in the Torsion and Rings columns. '-' means no outliers of that kind were identified.

Mol	Type	Chain	Res	Link	Chirals	Torsions	Rings
2	GHW	A	187	-	-	0/13/21/21	0/3/3/3
3	NDP	A	188	-	-	0/30/77/77	0/5/5/5
4	SO4	A	189	-	-	0/0/0/0	0/0/0/0

All (22) bond length outliers are listed below:

Mol	Chain	Res	Type	Atoms	Z	Observed(Å)	Ideal(Å)
3	A	188	NDP	C3B-C2B	-2.97	1.46	1.53
3	A	188	NDP	PA-O1A	-2.88	1.40	1.51
3	A	188	NDP	PA-O2A	-2.83	1.42	1.54
3	A	188	NDP	C4N-C5N	-2.81	1.43	1.49
3	A	188	NDP	O2B-C2B	-2.63	1.36	1.44
2	A	187	GHW	C5-C4	-2.44	1.37	1.42
3	A	188	NDP	C3D-C4D	-2.41	1.46	1.53
3	A	188	NDP	O4D-C1D	-2.35	1.36	1.42
3	A	188	NDP	PN-O2N	-2.29	1.45	1.54
2	A	187	GHW	CAI-CAZ	-2.01	1.34	1.39
2	A	187	GHW	CAZ-SAT	2.05	1.81	1.77
3	A	188	NDP	C2N-C3N	2.15	1.39	1.34
3	A	188	NDP	C2A-N3A	2.17	1.36	1.32
2	A	187	GHW	C2-N2	2.19	1.38	1.34
3	A	188	NDP	O3B-C3B	2.26	1.48	1.43
2	A	187	GHW	C4-N3	2.33	1.39	1.34
3	A	188	NDP	O4D-C4D	2.55	1.50	1.45
3	A	188	NDP	C4A-N3A	3.37	1.40	1.35
2	A	187	GHW	C6-N1	3.41	1.39	1.33
2	A	187	GHW	CBG-CAP	3.53	1.58	1.53
3	A	188	NDP	C6N-C5N	4.71	1.42	1.33
3	A	188	NDP	O4B-C1B	5.88	1.48	1.41

All (15) bond angle outliers are listed below:

Mol	Chain	Res	Type	Atoms	Z	Observed(°)	Ideal(°)
2	A	187	GHW	C5-C6-N1	-14.26	113.38	124.19
3	A	188	NDP	N3A-C2A-N1A	-7.66	123.03	128.89
3	A	188	NDP	C4A-C5A-N7A	-3.78	106.00	109.48
3	A	188	NDP	O4B-C1B-C2B	-3.30	100.64	106.60
3	A	188	NDP	C3N-C2N-N1N	-3.09	118.71	123.14
3	A	188	NDP	C1B-N9A-C4A	-2.40	123.32	126.94
2	A	187	GHW	N3-C2-N1	-2.15	124.17	127.44
2	A	187	GHW	CAL-CAJ-CAZ	-2.09	117.88	120.58
3	A	188	NDP	O3D-C3D-C2D	-2.03	105.22	111.83
3	A	188	NDP	C1D-N1N-C2N	-2.01	117.40	120.91
2	A	187	GHW	CAJ-CAZ-CAI	2.15	122.74	118.71
3	A	188	NDP	C5N-C4N-C3N	2.33	118.93	112.52
3	A	188	NDP	C6N-N1N-C2N	2.34	124.55	118.52
3	A	188	NDP	PN-O3-PA	2.85	140.74	132.73
2	A	187	GHW	C6-N1-C2	5.61	123.73	115.94

There are no chirality outliers.

There are no torsion outliers.

There are no ring outliers.

2 monomers are involved in 2 short contacts:

Mol	Chain	Res	Type	Clashes	Symm-Clashes
2	A	187	GHW	1	0
3	A	188	NDP	2	0

## 5.7 Other polymers [i](#)

There are no such residues in this entry.

## 5.8 Polymer linkage issues [i](#)

There are no chain breaks in this entry.

## 6 Fit of model and data [i](#)

### 6.1 Protein, DNA and RNA chains [i](#)

In the following table, the column labelled ‘#RSRZ> 2’ contains the number (and percentage) of RSRZ outliers, followed by percent RSRZ outliers for the chain as percentile scores relative to all X-ray entries and entries of similar resolution. The OWAB column contains the minimum, median, 95<sup>th</sup> percentile and maximum values of the occupancy-weighted average B-factor per residue. The column labelled ‘Q< 0.9’ lists the number of (and percentage) of residues with an average occupancy less than 0.9.

Mol	Chain	Analysed	<RSRZ>	#RSRZ>2		OWAB(Å <sup>2</sup> )	Q<0.9
1	A	186/186 (100%)	0.50	14 (7%)	17 13	9, 14, 29, 38	0

All (14) RSRZ outliers are listed below:

Mol	Chain	Res	Type	RSRZ
1	A	1	VAL	7.8
1	A	128	PRO	4.2
1	A	44	GLU	4.2
1	A	106	ALA	3.9
1	A	186	ASP	3.5
1	A	42	SER	3.4
1	A	185	ASN	2.8
1	A	103	PRO	2.8
1	A	102	GLN	2.8
1	A	43	VAL	2.7
1	A	107	ASN	2.7
1	A	28	ARG	2.7
1	A	126	ASN	2.2
1	A	104	GLU	2.0

### 6.2 Non-standard residues in protein, DNA, RNA chains [i](#)

There are no non-standard protein/DNA/RNA residues in this entry.

### 6.3 Carbohydrates [i](#)

There are no carbohydrates in this entry.

## 6.4 Ligands [i](#)

In the following table, the Atoms column lists the number of modelled atoms in the group and the number defined in the chemical component dictionary. LLDF column lists the quality of electron density of the group with respect to its neighbouring residues in protein, DNA or RNA chains. The B-factors column lists the minimum, median, 95<sup>th</sup> percentile and maximum values of B factors of atoms in the group. The column labelled 'Q< 0.9' lists the number of atoms with occupancy less than 0.9.

Mol	Type	Chain	Res	Atoms	RSCC	RSR	LLDF	B-factors( $\text{\AA}^2$ )	Q<0.9
4	SO4	A	189	5/5	0.85	0.31	4.57	43,47,52,55	5
2	GHW	A	187	31/31	0.97	0.09	-0.21	8,11,20,28	0
3	NDP	A	188	48/48	0.97	0.07	-1.09	8,10,14,16	0

## 6.5 Other polymers [i](#)

There are no such residues in this entry.