



Full wwPDB X-ray Structure Validation Report ⓘ

Jan 31, 2016 – 07:39 PM GMT

PDB ID : 1GL7
Title : PLASMID COUPLING PROTEIN TRWB IN COMPLEX WITH THE NON-HYDROLISABLE ATP-ANALOGUE ADPNP.
Authors : Gomis-Ruth, F.X.; Moncalian, G.; De La Cruz, F.; Coll, M.
Deposited on : 2001-08-28
Resolution : 3.00 Å(reported)

This is a Full wwPDB X-ray Structure Validation Report for a publicly released PDB entry.
We welcome your comments at validation@mail.wwpdb.org
A user guide is available at
<http://wwpdb.org/validation/2016/XrayValidationReportHelp>
with specific help available everywhere you see the ⓘ symbol.

The following versions of software and data (see [references ⓘ](#)) were used in the production of this report:

MolProbity : 4.02b-467
Mogul : 1.7 (RC4), CSD as536be (2015)
Xtriage (Phenix) : **NOT EXECUTED**
EDS : **NOT EXECUTED**
Percentile statistics : 20151230.v01 (using entries in the PDB archive December 30th 2015)
Ideal geometry (proteins) : Engh & Huber (2001)
Ideal geometry (DNA, RNA) : Parkinson et al. (1996)
Validation Pipeline (wwPDB-VP) : trunk26865

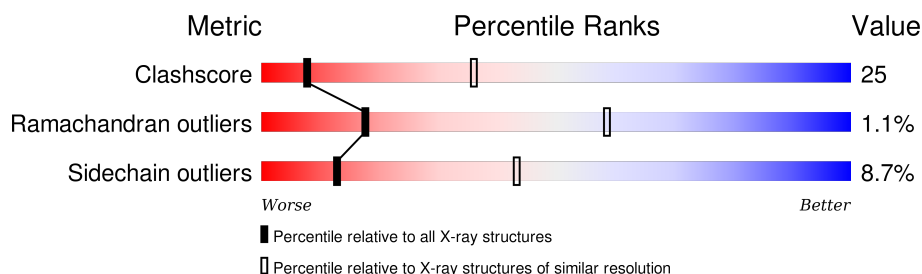
1 Overall quality at a glance

The following experimental techniques were used to determine the structure:

X-RAY DIFFRACTION

The reported resolution of this entry is 3.00 Å.

Percentile scores (ranging between 0-100) for global validation metrics of the entry are shown in the following graphic. The table shows the number of entries on which the scores are based.



Metric	Whole archive (#Entries)	Similar resolution (#Entries, resolution range(Å))
Clashscore	102246	1912 (3.00-3.00)
Ramachandran outliers	100387	1853 (3.00-3.00)
Sidechain outliers	100360	1856 (3.00-3.00)

The table below summarises the geometric issues observed across the polymeric chains and their fit to the electron density. The red, orange, yellow and green segments on the lower bar indicate the fraction of residues that contain outliers for ≥ 3 , 2, 1 and 0 types of geometric quality criteria. A grey segment represents the fraction of residues that are not modelled. The numeric value for each fraction is indicated below the corresponding segment, with a dot representing fractions $\leq 5\%$. The upper red bar (where present) indicates the fraction of residues that have poor fit to the electron density. The numeric value is given above the bar.

Note EDS was not executed.

Mol	Chain	Length	Quality of chain
1	A	437	
1	B	437	
1	D	437	
1	E	437	
1	F	437	
1	G	437	

2 Entry composition [i](#)

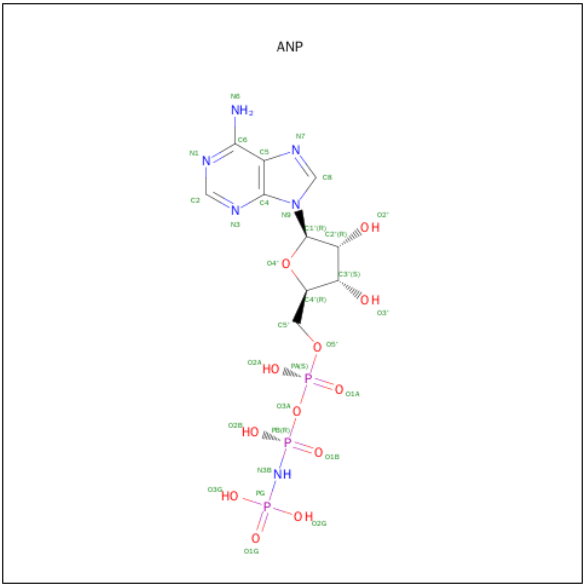
There are 4 unique types of molecules in this entry. The entry contains 19892 atoms, of which 0 are hydrogens and 0 are deuteriums.

In the tables below, the ZeroOcc column contains the number of atoms modelled with zero occupancy, the AltConf column contains the number of residues with at least one atom in alternate conformation and the Trace column contains the number of residues modelled with at most 2 atoms.

- Molecule 1 is a protein called CONJUGAL TRANSFER PROTEIN TRWB.

Mol	Chain	Residues	Atoms					ZeroOcc	AltConf	Trace
1	A	411	Total	C	N	O	S	0	0	0
			3233	2046	577	600	10			
1	B	417	Total	C	N	O	S	0	0	0
			3276	2072	587	607	10			
1	D	417	Total	C	N	O	S	0	0	0
			3273	2069	587	607	10			
1	E	414	Total	C	N	O	S	0	0	0
			3254	2059	581	604	10			
1	F	413	Total	C	N	O	S	0	0	0
			3240	2050	579	601	10			
1	G	412	Total	C	N	O	S	0	0	0
			3237	2048	578	601	10			

- Molecule 2 is PHOSPHOAMINOPHOSPHONIC ACID-ADENYLATE ESTER (three-letter code: ANP) (formula: C₁₀H₁₇N₆O₁₂P₃).



Mol	Chain	Residues	Atoms					ZeroOcc	AltConf
2	A	1	Total	C	N	O	P	0	0
			31	10	6	12	3		
2	B	1	Total	C	N	O	P	0	0
			31	10	6	12	3		
2	D	1	Total	C	N	O	P	0	0
			31	10	6	12	3		
2	E	1	Total	C	N	O	P	0	0
			31	10	6	12	3		
2	F	1	Total	C	N	O	P	0	0
			31	10	6	12	3		
2	G	1	Total	C	N	O	P	0	0
			31	10	6	12	3		

- Molecule 3 is CHLORIDE ION (three-letter code: CL) (formula: Cl).

Mol	Chain	Residues	Atoms		ZeroOcc	AltConf
3	A	1	Total	Cl	0	0
			1	1		

- Molecule 4 is water.

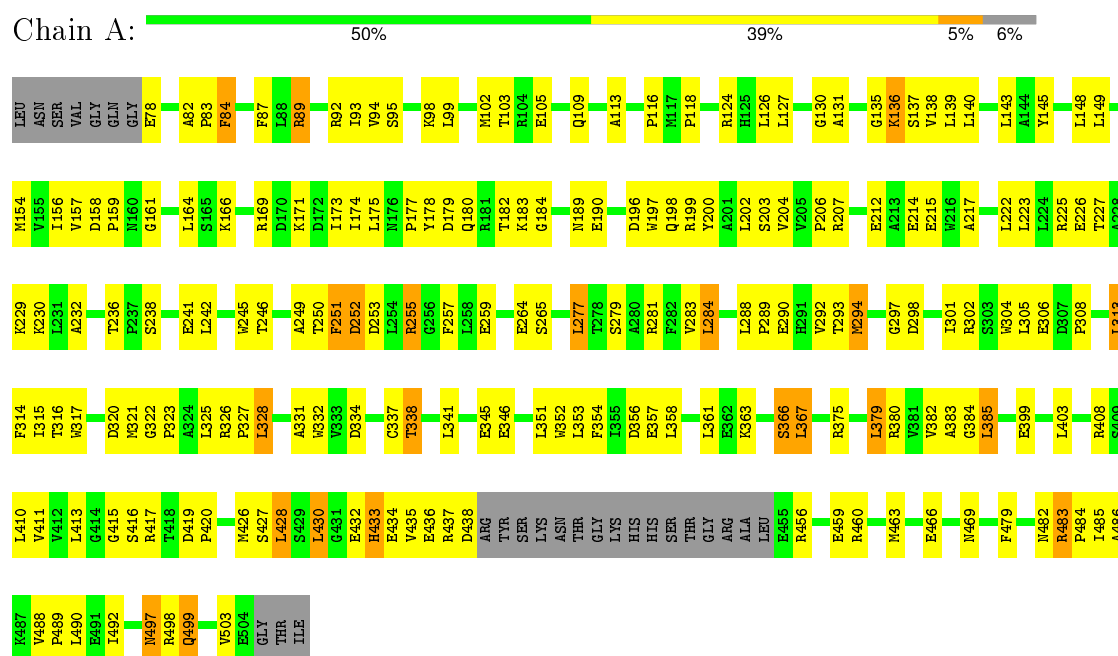
Mol	Chain	Residues	Atoms		ZeroOcc	AltConf
4	A	30	Total	O	0	0
			30	30		
4	B	29	Total	O	0	0
			29	29		
4	D	39	Total	O	0	0
			39	39		
4	E	53	Total	O	0	0
			53	53		
4	F	23	Total	O	0	0
			23	23		
4	G	18	Total	O	0	0
			18	18		

3 Residue-property plots

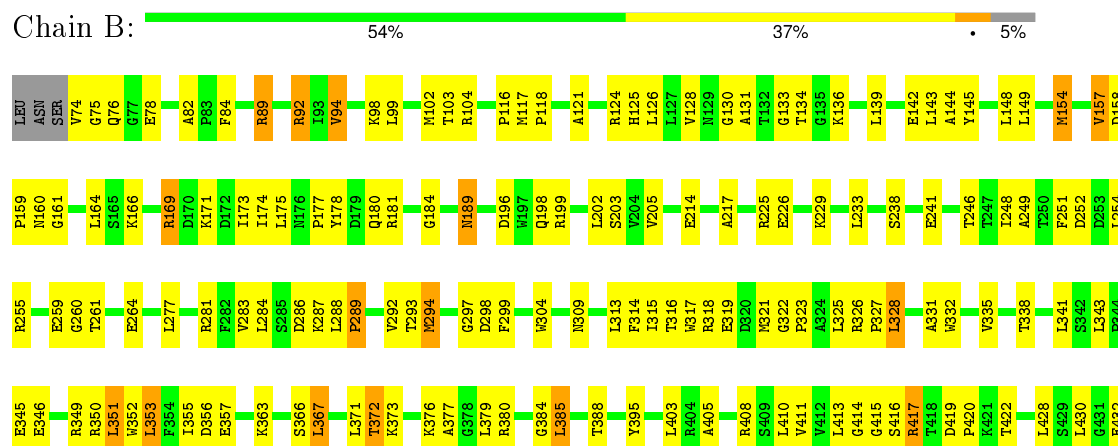
These plots are drawn for all protein, RNA and DNA chains in the entry. The first graphic for a chain summarises the proportions of errors displayed in the second graphic. The second graphic shows the sequence view annotated by issues in geometry and electron density. Residues are color-coded according to the number of geometric quality criteria for which they contain at least one outlier: green = 0, yellow = 1, orange = 2 and red = 3 or more. A red dot above a residue indicates a poor fit to the electron density ($RSRZ > 2$). Stretches of 2 or more consecutive residues without any outlier are shown as a green connector. Residues present in the sample, but not in the model, are shown in grey.

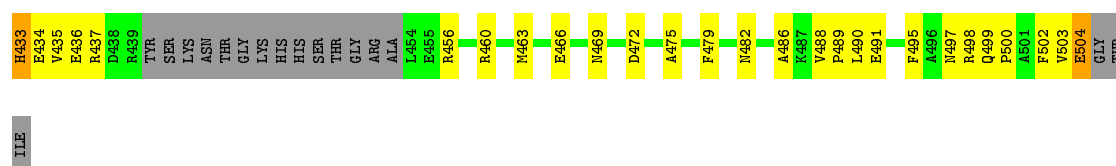
Note EDS was not executed.

• Molecule 1: CONJUGAL TRANSFER PROTEIN TRWB



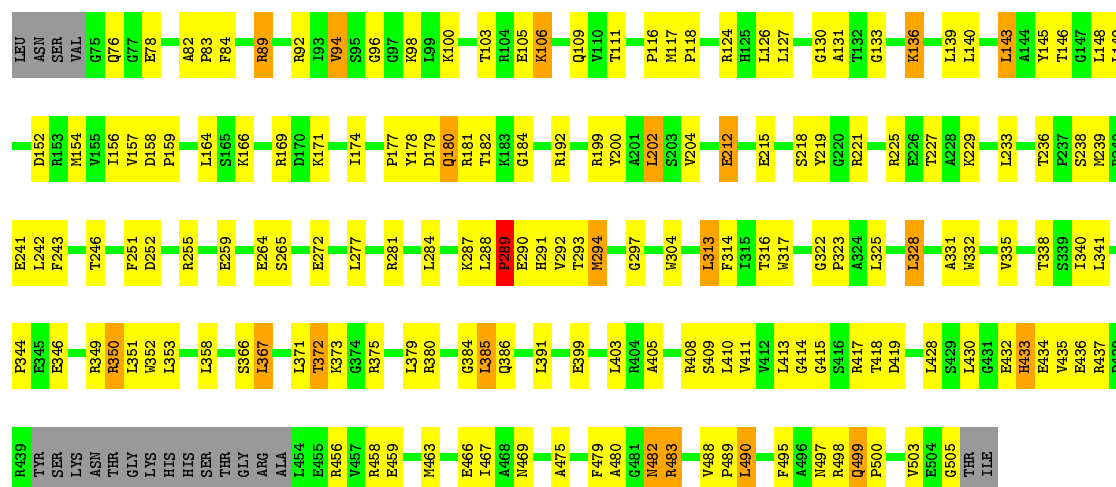
• Molecule 1: CONJUGAL TRANSFER PROTEIN TRWB





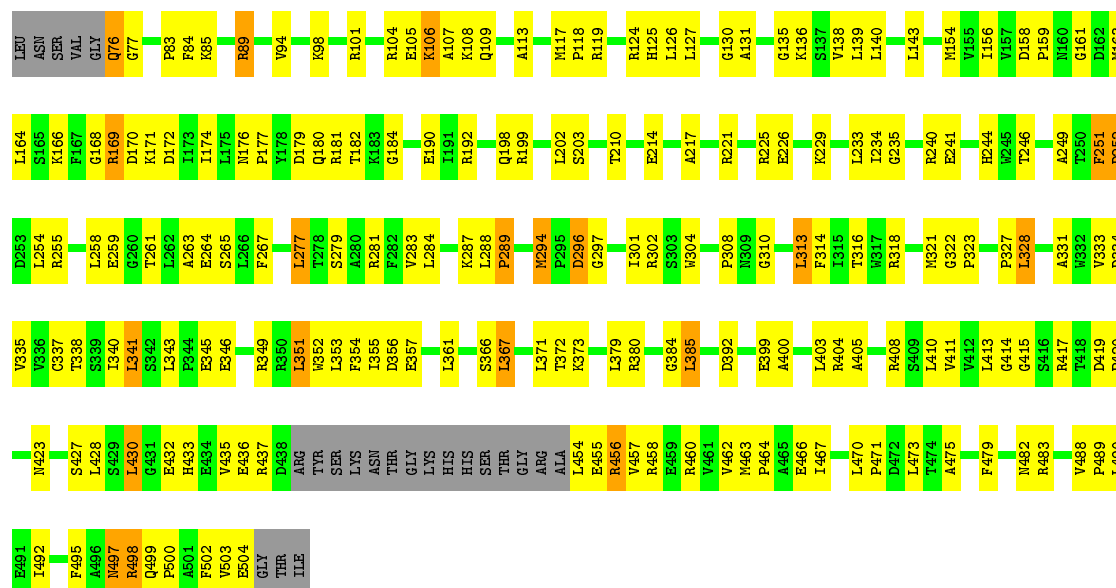
• Molecule 1: CONJUGAL TRANSFER PROTEIN TRWB

Chain D: 57% 34% 5% 5%



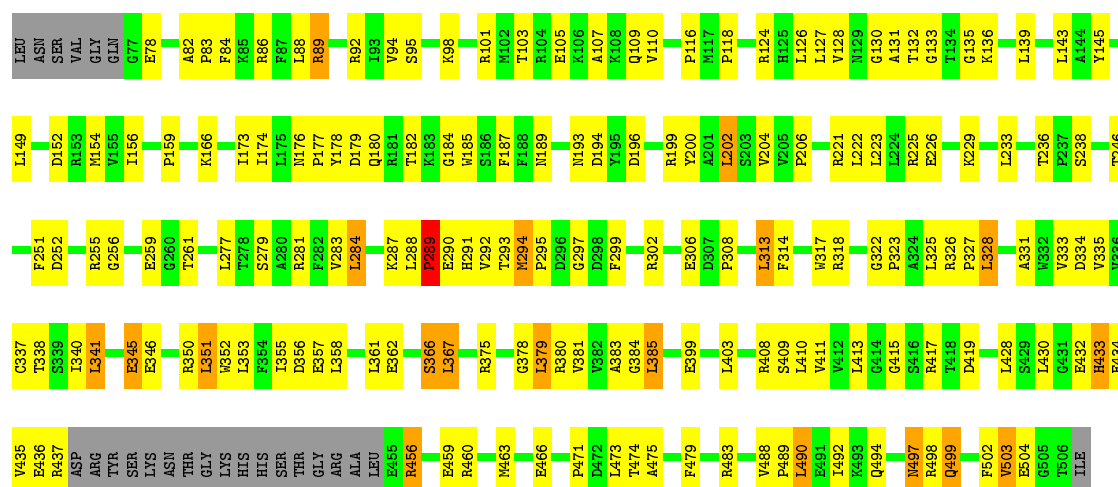
• Molecule 1: CONJUGAL TRANSFER PROTEIN TRWB

Chain E: 51% 39% 5% 5%



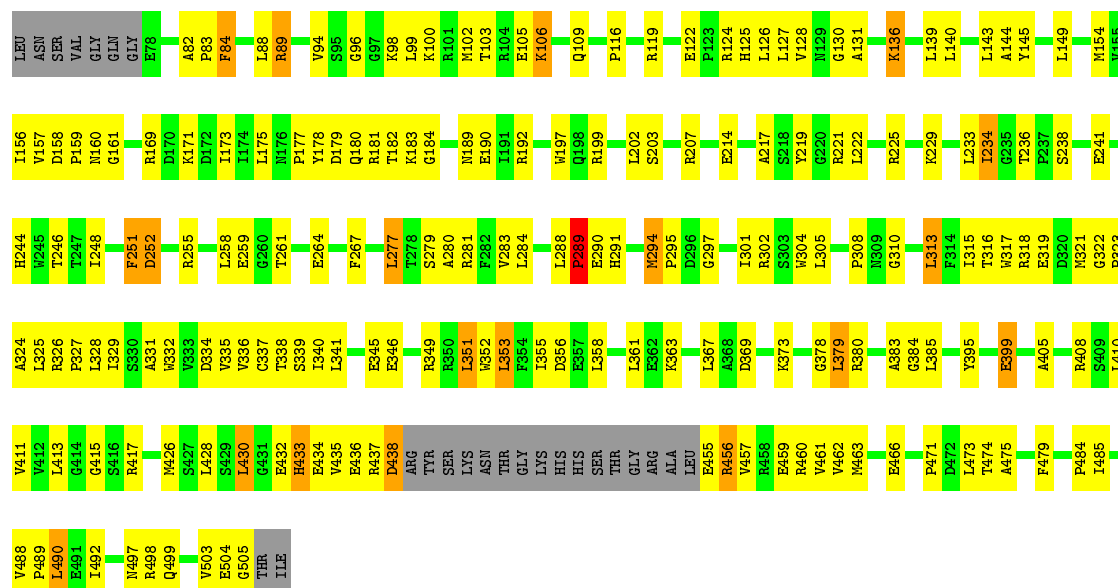
• Molecule 1: CONJUGAL TRANSFER PROTEIN TRWB

Chain F: 55% 35% 5%



• Molecule 1: CONJUGAL TRANSFER PROTEIN TRWB

Chain G: 51% 39% 6%



4 Data and refinement statistics

Xtriage (Phenix) and EDS were not executed - this section will therefore be incomplete.

Property	Value	Source
Space group	P 31 2 1	Depositor
Cell constants a, b, c, α , β , γ	152.70 Å 152.70 Å 252.10 Å 90.00° 90.00° 120.00°	Depositor
Resolution (Å)	50.00 – 3.00	Depositor
% Data completeness (in resolution range)	100.0 (50.00-3.00)	Depositor
R_{merge}	0.11	Depositor
R_{sym}	(Not available)	Depositor
Refinement program	CNS 1.0	Depositor
R, R_{free}	0.219 , 0.265	Depositor
Estimated twinning fraction	No twinning to report.	Xtriage
Total number of atoms	19892	wwPDB-VP
Average B, all atoms (Å ²)	64.0	wwPDB-VP

5 Model quality [i](#)

5.1 Standard geometry [i](#)

Bond lengths and bond angles in the following residue types are not validated in this section: ANP, CL

The Z score for a bond length (or angle) is the number of standard deviations the observed value is removed from the expected value. A bond length (or angle) with $|Z| > 5$ is considered an outlier worth inspection. RMSZ is the root-mean-square of all Z scores of the bond lengths (or angles).

Mol	Chain	Bond lengths		Bond angles	
		RMSZ	$\# Z > 5$	RMSZ	$\# Z > 5$
1	A	0.47	0/3297	0.68	0/4457
1	B	0.46	0/3340	0.68	1/4514 (0.0%)
1	D	0.47	0/3337	0.69	1/4509 (0.0%)
1	E	0.47	0/3318	0.70	0/4485
1	F	0.46	0/3304	0.69	0/4466
1	G	0.47	0/3301	0.68	0/4462
All	All	0.47	0/19897	0.69	2/26893 (0.0%)

There are no bond length outliers.

All (2) bond angle outliers are listed below:

Mol	Chain	Res	Type	Atoms	Z	Observed(°)	Ideal(°)
1	B	157	VAL	N-CA-C	-5.51	96.12	111.00
1	D	157	VAL	N-CA-C	-5.14	97.11	111.00

There are no chirality outliers.

There are no planarity outliers.

5.2 Too-close contacts [i](#)

In the following table, the Non-H and H(model) columns list the number of non-hydrogen atoms and hydrogen atoms in the chain respectively. The H(added) column lists the number of hydrogen atoms added and optimized by MolProbity. The Clashes column lists the number of clashes within the asymmetric unit, whereas Symm-Clashes lists symmetry related clashes.

Mol	Chain	Non-H	H(model)	H(added)	Clashes	Symm-Clashes
1	A	3233	0	3261	169	0
1	B	3276	0	3308	165	1
1	D	3273	0	3302	157	1

Continued on next page...

Continued from previous page...

Mol	Chain	Non-H	H(model)	H(added)	Clashes	Symm-Clashes
1	E	3254	0	3283	185	0
1	F	3240	0	3270	172	0
1	G	3237	0	3264	180	0
2	A	31	0	13	1	0
2	B	31	0	13	2	0
2	D	31	0	13	1	0
2	E	31	0	13	2	0
2	F	31	0	13	2	0
2	G	31	0	13	1	0
3	A	1	0	0	0	0
4	A	30	0	0	1	0
4	B	29	0	0	1	0
4	D	39	0	0	3	0
4	E	53	0	0	3	0
4	F	23	0	0	0	0
4	G	18	0	0	0	0
All	All	19892	0	19766	989	1

The all-atom clashscore is defined as the number of clashes found per 1000 atoms (including hydrogen atoms). The all-atom clashscore for this structure is 25.

All (989) close contacts within the same asymmetric unit are listed below, sorted by their clash magnitude.

Atom-1	Atom-2	Interatomic distance (Å)	Clash overlap (Å)
1:B:367:LEU:HD13	1:B:403:LEU:HD11	1.36	1.05
1:D:413:LEU:HD23	1:D:475:ALA:HB2	1.37	1.03
1:F:463:MET:HB2	1:F:466:GLU:HG3	1.43	1.01
1:B:503:VAL:O	1:B:504:GLU:HB2	1.63	0.98
1:G:154:MET:HE3	1:G:156:ILE:HD11	1.44	0.98
1:F:105:GLU:H	1:F:109:GLN:NE2	1.60	0.98
1:G:94:VAL:HG21	1:G:98:LYS:HG2	1.46	0.97
1:F:105:GLU:H	1:F:109:GLN:HE22	1.02	0.97
1:B:372:THR:HG22	1:B:373:LYS:HG3	1.47	0.94
1:B:180:GLN:HE21	1:B:504:GLU:HG3	1.33	0.92
1:B:74:VAL:HB	1:B:84:PHE:O	1.70	0.92
1:D:463:MET:HB2	1:D:466:GLU:HG3	1.51	0.91
1:B:92:ARG:NH2	1:B:92:ARG:HB3	1.86	0.90
1:E:413:LEU:HD23	1:E:475:ALA:HB2	1.53	0.90
1:A:190:GLU:OE1	1:A:302:ARG:HG3	1.72	0.90
1:E:94:VAL:HG21	1:E:98:LYS:HG2	1.51	0.88
1:A:131:ALA:HB2	1:A:415:GLY:HA2	1.55	0.88

Continued on next page...

Continued from previous page...

Atom-1	Atom-2	Interatomic distance (Å)	Clash overlap (Å)
1:A:384:GLY:O	1:A:385:LEU:HD13	1.74	0.88
1:E:94:VAL:CG2	1:E:98:LYS:HG2	2.03	0.87
1:G:177:PRO:HB3	1:G:294:MET:HG2	1.57	0.87
1:G:463:MET:HB2	1:G:466:GLU:HG3	1.57	0.87
1:E:131:ALA:HB2	1:E:415:GLY:HA2	1.55	0.86
1:F:199:ARG:HE	1:F:338:THR:CG2	1.89	0.86
1:A:463:MET:HB2	1:A:466:GLU:HG3	1.56	0.85
1:E:199:ARG:HE	1:E:338:THR:CG2	1.91	0.84
1:G:432:GLU:HG2	1:G:460:ARG:HD3	1.60	0.82
1:F:199:ARG:HE	1:F:338:THR:HG22	1.44	0.82
1:G:94:VAL:CG2	1:G:98:LYS:HG2	2.09	0.82
1:D:180:GLN:NE2	1:D:505:GLY:HA2	1.95	0.82
1:E:107:ALA:HB3	1:E:119:ARG:HD2	1.61	0.81
1:F:498:ARG:O	1:F:499:GLN:HG3	1.80	0.81
1:E:327:PRO:HG2	4:E:2039:HOH:O	1.80	0.81
1:E:169:ARG:HH11	1:E:169:ARG:HA	1.45	0.81
1:B:384:GLY:O	1:B:385:LEU:HD13	1.81	0.81
1:E:169:ARG:HH11	1:E:169:ARG:CA	1.94	0.80
1:B:169:ARG:HH11	1:B:171:LYS:HD3	1.45	0.80
1:F:456:ARG:HG2	1:F:456:ARG:HH11	1.46	0.79
1:E:498:ARG:O	1:E:499:GLN:HG3	1.83	0.79
1:B:92:ARG:HB3	1:B:92:ARG:HH21	1.44	0.78
1:D:246:THR:O	1:D:281:ARG:HD2	1.82	0.78
1:E:463:MET:HB2	1:E:466:GLU:HG3	1.66	0.78
1:F:384:GLY:O	1:F:385:LEU:HD13	1.84	0.78
1:B:318:ARG:HH21	1:B:321:MET:CE	1.96	0.77
1:A:145:TYR:CZ	1:A:149:LEU:HD11	2.20	0.77
1:G:290:GLU:HB3	1:G:328:LEU:HD12	1.65	0.77
1:A:98:LYS:O	1:A:102:MET:HG3	1.85	0.77
1:B:318:ARG:HH21	1:B:321:MET:HE3	1.50	0.77
1:G:222:LEU:HA	1:G:225:ARG:NH1	2.00	0.76
1:E:304:TRP:CH2	1:E:313:LEU:HB2	2.21	0.76
1:E:169:ARG:HB2	1:E:172:ASP:OD2	1.86	0.76
1:G:169:ARG:HH11	1:G:171:LYS:HD3	1.50	0.75
1:E:84:PHE:HA	1:E:437:ARG:HG3	1.68	0.75
1:D:386:GLN:HB2	4:D:2028:HOH:O	1.87	0.75
1:F:413:LEU:HD23	1:F:475:ALA:HB2	1.68	0.75
1:B:463:MET:HB2	1:B:466:GLU:HG3	1.68	0.75
1:E:413:LEU:CD2	1:E:475:ALA:HB2	2.17	0.75
1:G:154:MET:HB3	1:G:352:TRP:HB2	1.69	0.74
1:D:199:ARG:HE	1:D:338:THR:HG22	1.52	0.74

Continued on next page...

Continued from previous page...

Atom-1	Atom-2	Interatomic distance (Å)	Clash overlap (Å)
1:D:331:ALA:O	1:D:335:VAL:HG23	1.87	0.74
1:A:166:LYS:HE2	1:A:497:ASN:ND2	2.03	0.74
1:D:180:GLN:HE21	1:D:505:GLY:HA2	1.52	0.74
1:A:166:LYS:HE2	1:A:497:ASN:HD21	1.51	0.73
1:F:358:LEU:HD11	1:F:367:LEU:HD11	1.71	0.73
1:B:180:GLN:HE21	1:B:504:GLU:CG	2.00	0.73
1:B:413:LEU:HD23	1:B:475:ALA:HB2	1.71	0.73
1:B:498:ARG:O	1:B:499:GLN:HG3	1.89	0.73
1:G:279:SER:O	1:G:283:VAL:HG23	1.90	0.72
1:D:94:VAL:CG2	1:D:98:LYS:HG2	2.20	0.72
1:F:331:ALA:O	1:F:335:VAL:HG23	1.90	0.71
1:F:488:VAL:HG13	1:F:489:PRO:HD2	1.72	0.71
1:F:379:LEU:HD23	1:F:380:ARG:N	2.05	0.71
1:E:199:ARG:HE	1:E:338:THR:HG22	1.56	0.71
1:G:498:ARG:O	1:G:499:GLN:HG3	1.90	0.71
1:A:328:LEU:O	1:A:331:ALA:HB3	1.90	0.71
1:A:358:LEU:HB3	1:A:385:LEU:HD11	1.72	0.71
1:F:356:ASP:OD2	1:F:357:GLU:N	2.24	0.71
1:F:346:GLU:HA	1:F:346:GLU:OE2	1.91	0.71
1:F:473:LEU:HD11	1:F:492:ILE:HD11	1.73	0.70
1:A:352:TRP:CZ2	1:A:380:ARG:HD3	2.25	0.70
1:E:497:ASN:HD22	1:E:497:ASN:N	1.90	0.69
1:A:352:TRP:CE2	1:A:380:ARG:HD3	2.26	0.69
1:A:456:ARG:HD2	1:A:456:ARG:N	2.07	0.69
1:E:384:GLY:O	1:E:385:LEU:HD13	1.92	0.69
1:E:456:ARG:HH21	1:E:456:ARG:HG3	1.57	0.69
1:E:169:ARG:HH11	1:E:169:ARG:CG	2.05	0.69
1:E:154:MET:HB3	1:E:352:TRP:HB2	1.75	0.69
1:F:184:GLY:HA3	1:F:297:GLY:HA3	1.73	0.69
1:G:246:THR:O	1:G:281:ARG:HD2	1.93	0.68
1:F:456:ARG:HG2	1:F:456:ARG:NH1	2.08	0.68
1:B:94:VAL:CG2	1:B:98:LYS:HE3	2.24	0.68
1:D:184:GLY:HA3	1:D:297:GLY:HA3	1.75	0.67
1:B:259:GLU:HA	1:B:264:GLU:HG3	1.75	0.67
1:D:482:ASN:C	1:D:482:ASN:HD22	1.96	0.67
1:A:222:LEU:HA	1:A:225:ARG:NH1	2.09	0.67
1:E:177:PRO:HB3	1:E:294:MET:HG2	1.76	0.67
1:F:345:GLU:N	1:F:345:GLU:OE1	2.28	0.67
1:A:158:ASP:OD2	1:A:161:GLY:HA2	1.95	0.67
1:A:93:ILE:HG13	1:A:485:ILE:HG13	1.78	0.66
1:E:169:ARG:NH1	1:E:170:ASP:H	1.91	0.66

Continued on next page...

Continued from previous page...

Atom-1	Atom-2	Interatomic distance (Å)	Clash overlap (Å)
1:B:131:ALA:HB2	1:B:415:GLY:HA2	1.78	0.66
1:B:82:ALA:O	1:B:437:ARG:NH1	2.28	0.66
1:F:379:LEU:HD23	1:F:380:ARG:H	1.60	0.66
1:B:488:VAL:HG13	1:B:489:PRO:HD2	1.78	0.66
1:G:105:GLU:HB2	1:G:109:GLN:NE2	2.11	0.66
1:E:169:ARG:NH1	1:E:169:ARG:HA	2.09	0.66
1:E:246:THR:O	1:E:281:ARG:HD2	1.95	0.66
1:A:179:ASP:O	1:A:182:THR:HG22	1.96	0.66
1:B:432:GLU:HG2	1:B:460:ARG:HD3	1.77	0.66
1:B:367:LEU:CD1	1:B:403:LEU:HD11	2.20	0.66
1:D:169:ARG:NH1	1:D:171:LYS:HD3	2.11	0.66
1:A:156:ILE:HG22	1:A:158:ASP:HB2	1.77	0.65
1:A:301:ILE:O	1:A:305:LEU:HG	1.97	0.65
1:E:169:ARG:NH1	1:E:169:ARG:HG2	2.11	0.65
1:A:497:ASN:N	1:A:497:ASN:HD22	1.93	0.65
1:D:238:SER:HB3	1:D:241:GLU:CG	2.26	0.65
1:F:471:PRO:HG2	1:F:474:THR:OG1	1.96	0.65
1:D:255:ARG:HH21	1:D:255:ARG:HG3	1.62	0.65
1:D:498:ARG:O	1:D:499:GLN:HG3	1.96	0.65
1:A:89:ARG:HD2	1:A:434:GLU:OE1	1.96	0.65
1:E:126:LEU:HD11	1:E:411:VAL:HG23	1.79	0.65
1:G:136:LYS:O	1:G:140:LEU:HD13	1.97	0.65
1:D:130:GLY:HA3	1:D:413:LEU:HB2	1.79	0.65
1:D:177:PRO:HG2	1:D:178:TYR:CD1	2.31	0.65
1:E:246:THR:C	1:E:281:ARG:HH11	1.98	0.65
1:D:384:GLY:O	1:D:385:LEU:HD13	1.97	0.64
1:D:410:LEU:HD12	1:D:411:VAL:H	1.61	0.64
1:A:367:LEU:HD13	1:A:403:LEU:HD11	1.79	0.64
1:F:154:MET:HB3	1:F:352:TRP:HB2	1.79	0.64
1:F:318:ARG:HH21	1:F:318:ARG:HB3	1.60	0.64
1:G:177:PRO:HD3	1:G:294:MET:HE3	1.79	0.64
1:B:145:TYR:CZ	1:B:149:LEU:HD11	2.32	0.64
1:E:156:ILE:HG22	1:E:158:ASP:HB2	1.79	0.64
1:F:318:ARG:NH2	1:F:318:ARG:HB3	2.13	0.64
1:A:159:PRO:HG3	1:A:317:TRP:CH2	2.33	0.64
1:E:184:GLY:HA3	1:E:297:GLY:HA3	1.79	0.64
1:E:436:GLU:HG2	1:E:454:LEU:HD13	1.80	0.64
1:A:479:PHE:O	1:G:417:ARG:NH1	2.31	0.64
1:D:367:LEU:HD13	1:D:403:LEU:HD11	1.79	0.64
1:B:346:GLU:OE2	1:B:346:GLU:HA	1.97	0.64
1:F:94:VAL:HG21	1:F:98:LYS:HG2	1.77	0.64

Continued on next page...

Continued from previous page...

Atom-1	Atom-2	Interatomic distance (Å)	Clash overlap (Å)
1:G:158:ASP:O	1:G:316:THR:HA	1.98	0.64
1:E:199:ARG:HE	1:E:338:THR:HG21	1.60	0.63
1:F:328:LEU:O	1:F:331:ALA:HB3	1.98	0.63
1:F:83:PRO:O	1:F:437:ARG:HD3	1.99	0.63
1:A:169:ARG:HH12	1:A:171:LYS:HD3	1.63	0.63
1:G:435:VAL:HG12	1:G:436:GLU:N	2.14	0.63
1:D:482:ASN:C	1:D:483:ARG:HG2	2.19	0.63
1:F:497:ASN:HD22	1:F:497:ASN:N	1.96	0.63
1:G:190:GLU:OE1	1:G:302:ARG:HG3	1.98	0.63
1:B:76:GLN:C	1:B:78:GLU:H	2.02	0.63
1:G:124:ARG:HB3	1:G:408:ARG:CG	2.29	0.63
1:A:306:GLU:O	1:A:308:PRO:HD3	1.99	0.63
1:G:159:PRO:HG3	1:G:317:TRP:CH2	2.33	0.63
1:B:313:LEU:HD23	1:B:314:PHE:N	2.14	0.63
1:A:432:GLU:HG2	1:A:460:ARG:HD3	1.80	0.63
1:B:428:LEU:HD23	1:B:428:LEU:O	1.99	0.62
1:G:380:ARG:HH21	1:G:380:ARG:HG3	1.64	0.62
1:D:199:ARG:HE	1:D:338:THR:CG2	2.11	0.62
1:E:166:LYS:HD2	1:E:495:PHE:HB2	1.81	0.62
1:F:351:LEU:HD23	1:F:352:TRP:H	1.64	0.62
1:A:154:MET:HB3	1:A:352:TRP:HB2	1.80	0.62
1:F:256:GLY:O	1:F:259:GLU:HG3	2.00	0.62
1:G:127:LEU:HD11	1:G:385:LEU:CD2	2.28	0.62
1:G:154:MET:HA	1:G:351:LEU:CD2	2.29	0.62
1:G:177:PRO:HG2	1:G:178:TYR:CD1	2.34	0.62
1:B:259:GLU:HA	1:B:264:GLU:CG	2.29	0.62
1:D:238:SER:HB3	1:D:241:GLU:HG3	1.80	0.62
1:F:152:ASP:OD1	1:F:350:ARG:NH2	2.33	0.62
1:B:410:LEU:HD12	1:B:411:VAL:H	1.64	0.62
1:F:131:ALA:HB2	1:F:415:GLY:HA2	1.82	0.62
1:F:246:THR:O	1:F:281:ARG:HD2	1.99	0.62
1:A:230:LYS:HG2	1:A:257:PHE:CZ	2.35	0.62
1:G:353:LEU:HD13	1:G:355:ILE:HD11	1.81	0.62
1:G:488:VAL:HG13	1:G:489:PRO:HD2	1.81	0.62
1:F:463:MET:SD	1:G:89:ARG:HD3	2.39	0.61
1:D:94:VAL:HG21	1:D:98:LYS:HG2	1.81	0.61
1:B:410:LEU:HD12	1:B:411:VAL:N	2.15	0.61
1:B:159:PRO:HG3	1:B:317:TRP:CH2	2.35	0.61
1:G:497:ASN:N	1:G:497:ASN:HD22	1.97	0.61
1:G:124:ARG:HB3	1:G:408:ARG:HB2	1.81	0.61
1:D:103:THR:OG1	1:D:116:PRO:HG2	2.01	0.61

Continued on next page...

Continued from previous page...

Atom-1	Atom-2	Interatomic distance (Å)	Clash overlap (Å)
1:B:433:HIS:HD2	1:B:433:HIS:O	1.83	0.61
1:G:207:ARG:HB2	1:G:363:LYS:HD3	1.83	0.61
2:B:701:ANP:PG	1:D:375:ARG:HE	2.24	0.61
1:E:328:LEU:O	1:E:331:ALA:HB3	2.01	0.61
1:B:124:ARG:HB3	1:B:408:ARG:HB2	1.82	0.61
1:B:417:ARG:NH1	1:D:479:PHE:O	2.33	0.61
1:G:461:VAL:HG11	1:G:485:ILE:HD11	1.82	0.61
1:G:222:LEU:HD23	1:G:267:PHE:CE1	2.35	0.61
1:E:94:VAL:HG22	1:E:98:LYS:HG2	1.83	0.61
1:A:420:PRO:HB2	1:B:428:LEU:HD22	1.82	0.61
1:E:463:MET:SD	1:F:89:ARG:HD3	2.41	0.61
1:D:131:ALA:HB2	1:D:415:GLY:HA2	1.82	0.61
1:G:131:ALA:HB2	1:G:415:GLY:HA2	1.83	0.61
1:G:435:VAL:CG1	1:G:436:GLU:N	2.63	0.61
1:E:130:GLY:HA3	1:E:413:LEU:HB2	1.82	0.60
1:F:127:LEU:HD11	1:F:385:LEU:HD22	1.83	0.60
1:E:85:LYS:HD3	1:E:454:LEU:HD11	1.83	0.60
1:F:86:ARG:HD3	1:F:436:GLU:OE1	2.01	0.60
1:D:94:VAL:HG22	1:D:98:LYS:HG2	1.83	0.60
1:A:433:HIS:HD2	1:A:433:HIS:O	1.84	0.60
1:E:470:LEU:HD23	1:E:471:PRO:HD2	1.83	0.60
1:D:372:THR:HG22	1:D:373:LYS:HG3	1.82	0.60
1:A:95:SER:OG	1:A:98:LYS:HB2	2.01	0.60
1:B:130:GLY:HA3	1:B:413:LEU:HB2	1.83	0.60
1:F:139:LEU:HD23	1:F:139:LEU:O	2.01	0.60
1:B:367:LEU:HD22	1:B:371:LEU:HG	1.84	0.60
1:G:103:THR:OG1	1:G:116:PRO:HG2	2.02	0.60
1:E:432:GLU:HG2	1:E:460:ARG:HD3	1.84	0.60
1:G:322:GLY:N	1:G:323:PRO:HD2	2.17	0.60
1:E:190:GLU:OE1	1:E:302:ARG:HG3	2.02	0.59
1:F:380:ARG:HH21	1:F:380:ARG:HG3	1.67	0.59
1:B:126:LEU:HD11	1:B:411:VAL:HG23	1.84	0.59
1:A:177:PRO:HB3	1:A:294:MET:HG2	1.83	0.59
1:G:180:GLN:HE21	1:G:505:GLY:HA2	1.66	0.59
1:D:84:PHE:HB3	1:D:437:ARG:HG3	1.84	0.59
1:F:410:LEU:HD12	1:F:411:VAL:H	1.66	0.59
1:F:252:ASP:O	1:F:255:ARG:HB2	2.02	0.59
1:A:410:LEU:HD12	1:A:411:VAL:H	1.66	0.59
1:E:169:ARG:HH11	1:E:169:ARG:CB	2.16	0.59
1:B:322:GLY:N	1:B:323:PRO:HD2	2.17	0.59
1:F:154:MET:HA	1:F:351:LEU:HD23	1.84	0.59

Continued on next page...

Continued from previous page...

Atom-1	Atom-2	Interatomic distance (Å)	Clash overlap (Å)
1:F:351:LEU:HD23	1:F:352:TRP:N	2.18	0.59
1:G:158:ASP:HB3	1:G:316:THR:HG22	1.85	0.59
1:G:180:GLN:NE2	1:G:505:GLY:HA2	2.16	0.59
1:F:193:ASN:O	1:F:196:ASP:HB2	2.01	0.59
1:F:199:ARG:HE	1:F:338:THR:HG21	1.67	0.59
1:E:135:GLY:HA2	2:E:701:ANP:O1A	2.02	0.59
1:A:139:LEU:HB2	1:A:490:LEU:HD11	1.85	0.59
1:E:455:GLU:HG3	1:E:455:GLU:O	2.04	0.58
1:F:139:LEU:HD23	1:F:139:LEU:C	2.23	0.58
1:F:255:ARG:HG3	1:F:255:ARG:HH21	1.69	0.58
1:A:246:THR:O	1:A:281:ARG:HD2	2.03	0.58
1:B:98:LYS:O	1:B:102:MET:HG3	2.02	0.58
1:B:169:ARG:NH1	1:B:171:LYS:HD3	2.17	0.58
1:B:225:ARG:O	1:B:229:LYS:HB2	2.04	0.58
1:A:177:PRO:HD3	1:A:294:MET:HE3	1.85	0.58
1:E:136:LYS:O	1:E:140:LEU:HD13	2.04	0.58
1:B:184:GLY:HA3	1:B:297:GLY:HA3	1.84	0.58
1:G:199:ARG:HE	1:G:338:THR:CG2	2.16	0.58
1:D:145:TYR:CZ	1:D:149:LEU:HD11	2.39	0.58
1:A:83:PRO:HB3	4:A:2009:HOH:O	2.04	0.58
1:F:145:TYR:CZ	1:F:149:LEU:HD11	2.39	0.58
1:G:379:LEU:CD2	1:G:380:ARG:N	2.67	0.58
1:D:463:MET:SD	1:E:89:ARG:HD3	2.43	0.58
1:E:179:ASP:O	1:E:182:THR:HG22	2.03	0.58
1:G:328:LEU:O	1:G:331:ALA:HB3	2.04	0.57
1:G:105:GLU:HB2	1:G:109:GLN:CD	2.25	0.57
1:F:177:PRO:HG2	1:F:178:TYR:CD1	2.39	0.57
1:A:139:LEU:C	1:A:139:LEU:HD23	2.25	0.57
1:G:184:GLY:HA3	1:G:297:GLY:HA3	1.86	0.57
1:E:169:ARG:HD3	1:E:171:LYS:HG2	1.87	0.57
1:D:184:GLY:HA3	1:D:297:GLY:CA	2.35	0.57
1:D:164:LEU:HA	1:D:314:PHE:CE2	2.39	0.57
1:F:105:GLU:N	1:F:109:GLN:HE22	1.86	0.57
1:E:456:ARG:NH2	1:E:456:ARG:HG3	2.20	0.57
1:D:410:LEU:HD12	1:D:411:VAL:N	2.19	0.57
1:F:353:LEU:HD22	1:F:355:ILE:CG1	2.33	0.57
1:G:160:ASN:HD21	1:G:319:GLU:CD	2.07	0.57
1:D:127:LEU:HD11	1:D:385:LEU:HD22	1.87	0.57
1:B:380:ARG:HG3	1:B:380:ARG:HH21	1.69	0.57
1:A:103:THR:OG1	1:A:116:PRO:HG2	2.05	0.57
1:B:180:GLN:HB3	1:B:503:VAL:HG12	1.87	0.57

Continued on next page...

Continued from previous page...

Atom-1	Atom-2	Interatomic distance (Å)	Clash overlap (Å)
1:A:255:ARG:HG3	1:A:255:ARG:HH21	1.69	0.57
1:G:154:MET:HA	1:G:351:LEU:HD23	1.85	0.57
1:B:356:ASP:OD2	1:B:357:GLU:N	2.38	0.57
1:D:304:TRP:CH2	1:D:313:LEU:HB2	2.40	0.57
1:A:84:PHE:N	1:A:84:PHE:CD1	2.72	0.57
1:A:338:THR:O	1:A:341:LEU:HB2	2.05	0.57
1:G:175:LEU:HD12	1:G:313:LEU:HD21	1.85	0.57
1:F:145:TYR:CE1	1:F:149:LEU:HD21	2.40	0.56
1:G:98:LYS:O	1:G:102:MET:HG3	2.05	0.56
1:F:432:GLU:HG2	1:F:460:ARG:HD3	1.87	0.56
1:E:169:ARG:HH11	1:E:169:ARG:HG2	1.67	0.56
1:E:249:ALA:O	1:E:281:ARG:NH2	2.28	0.56
1:G:158:ASP:OD2	1:G:161:GLY:HA2	2.04	0.56
1:E:430:LEU:HD23	1:E:462:VAL:HG21	1.87	0.56
1:D:433:HIS:HD2	1:D:433:HIS:O	1.88	0.56
1:D:346:GLU:OE2	1:D:346:GLU:HA	2.04	0.56
1:B:246:THR:O	1:B:281:ARG:HD2	2.06	0.56
1:F:145:TYR:O	1:F:149:LEU:HG	2.05	0.56
1:E:322:GLY:N	1:E:323:PRO:HD2	2.20	0.56
1:D:372:THR:HG22	1:D:373:LYS:CG	2.36	0.56
1:F:105:GLU:OE2	1:F:118:PRO:HA	2.06	0.56
1:A:127:LEU:HD11	1:A:385:LEU:CD2	2.36	0.56
1:D:482:ASN:ND2	1:D:482:ASN:C	2.59	0.56
1:G:207:ARG:CB	1:G:363:LYS:HD3	2.35	0.56
1:D:292:VAL:C	1:D:294:MET:H	2.09	0.56
1:E:318:ARG:HH21	1:E:321:MET:CE	2.18	0.56
1:G:331:ALA:O	1:G:335:VAL:HG23	2.06	0.56
1:E:198:GLN:HG2	4:E:2021:HOH:O	2.05	0.56
1:D:159:PRO:HG3	1:D:317:TRP:CH2	2.41	0.56
1:A:113:ALA:HA	1:A:490:LEU:HD23	1.88	0.56
1:F:322:GLY:N	1:F:323:PRO:HD2	2.21	0.56
1:A:252:ASP:OD2	1:A:252:ASP:N	2.37	0.56
1:A:358:LEU:HB3	1:A:385:LEU:CD1	2.36	0.56
1:A:326:ARG:N	1:A:327:PRO:HD2	2.20	0.56
1:D:139:LEU:HB2	1:D:490:LEU:HD11	1.87	0.56
1:A:154:MET:CE	1:A:156:ILE:HD11	2.35	0.55
1:D:169:ARG:HH11	1:D:171:LYS:HD3	1.70	0.55
1:D:154:MET:HB3	1:D:352:TRP:HB2	1.88	0.55
1:B:326:ARG:N	1:B:327:PRO:HD2	2.21	0.55
1:B:419:ASP:HB2	1:D:405:ALA:HB2	1.88	0.55
1:D:177:PRO:HG2	1:D:178:TYR:HD1	1.71	0.55

Continued on next page...

Continued from previous page...

Atom-1	Atom-2	Interatomic distance (Å)	Clash overlap (Å)
1:F:410:LEU:HD12	1:F:411:VAL:N	2.21	0.55
1:A:334:ASP:O	1:A:337:CYS:HB2	2.05	0.55
1:D:136:LYS:O	1:D:140:LEU:HD13	2.06	0.55
1:E:420:PRO:HA	1:E:423:ASN:HD22	1.71	0.55
1:G:345:GLU:OE1	1:G:345:GLU:HA	2.07	0.55
1:F:124:ARG:HB3	1:F:408:ARG:CG	2.36	0.55
1:B:169:ARG:HG3	1:B:498:ARG:NH2	2.22	0.55
1:G:379:LEU:HD23	1:G:380:ARG:N	2.22	0.55
1:E:333:VAL:HG21	1:E:361:LEU:CD1	2.37	0.55
1:F:502:PHE:CE2	1:F:504:GLU:HB2	2.42	0.55
1:G:96:GLY:O	1:G:100:LYS:HG3	2.07	0.55
1:D:344:PRO:O	1:D:349:ARG:NH2	2.39	0.55
1:A:177:PRO:HG2	1:A:178:TYR:CD1	2.41	0.55
1:G:294:MET:SD	1:G:295:PRO:HD2	2.47	0.55
1:E:199:ARG:NE	1:E:338:THR:HG22	2.20	0.55
1:A:356:ASP:OD2	1:A:357:GLU:N	2.39	0.55
1:F:177:PRO:HB3	1:F:294:MET:HG2	1.88	0.55
1:B:331:ALA:O	1:B:335:VAL:HG23	2.07	0.55
1:G:94:VAL:HG21	1:G:98:LYS:CG	2.30	0.55
1:F:292:VAL:C	1:F:294:MET:H	2.10	0.55
1:D:469:ASN:O	1:E:482:ASN:HB2	2.07	0.55
1:D:281:ARG:HH21	1:E:265:SER:HB3	1.73	0.54
1:D:352:TRP:CZ2	1:D:380:ARG:HD3	2.41	0.54
1:G:258:LEU:O	1:G:261:THR:OG1	2.15	0.54
1:E:380:ARG:HH21	1:E:380:ARG:HG3	1.71	0.54
1:D:287:LYS:C	1:D:289:PRO:HD2	2.28	0.54
1:A:420:PRO:CB	1:B:428:LEU:HD22	2.36	0.54
1:B:199:ARG:HE	1:B:338:THR:CG2	2.20	0.54
1:D:414:GLY:HA2	1:D:467:ILE:HG23	1.89	0.54
1:E:333:VAL:HG21	1:E:361:LEU:HD13	1.89	0.54
1:G:252:ASP:OD2	1:G:252:ASP:N	2.41	0.54
1:E:199:ARG:NE	1:E:338:THR:CG2	2.67	0.54
1:F:159:PRO:HG3	1:F:317:TRP:CH2	2.43	0.54
1:G:321:MET:C	1:G:323:PRO:HD2	2.27	0.54
1:G:244:HIS:HA	1:G:248:ILE:CG1	2.38	0.54
1:D:152:ASP:OD1	1:D:350:ARG:NH2	2.40	0.54
1:G:433:HIS:CD2	1:G:433:HIS:C	2.81	0.54
1:A:346:GLU:HA	1:A:346:GLU:OE2	2.08	0.54
1:A:410:LEU:HD12	1:A:411:VAL:N	2.23	0.54
1:B:419:ASP:HB2	1:D:405:ALA:CB	2.37	0.54
1:B:160:ASN:HD21	1:B:319:GLU:HG3	1.73	0.54

Continued on next page...

Continued from previous page...

Atom-1	Atom-2	Interatomic distance (Å)	Clash overlap (Å)
1:E:84:PHE:HA	1:E:437:ARG:CG	2.37	0.54
1:A:157:VAL:O	1:A:159:PRO:HD3	2.08	0.54
1:D:76:GLN:O	1:D:78:GLU:HG2	2.08	0.54
1:E:98:LYS:HD2	1:E:101:ARG:HH21	1.73	0.54
1:A:145:TYR:CE2	1:A:149:LEU:HD11	2.42	0.54
1:D:239:MET:CE	1:D:291:HIS:HB3	2.38	0.54
1:D:124:ARG:HB3	1:D:408:ARG:HB2	1.90	0.54
1:A:322:GLY:N	1:A:323:PRO:HD2	2.23	0.54
1:B:463:MET:SD	1:D:89:ARG:HD3	2.48	0.54
1:F:94:VAL:HG22	1:F:95:SER:H	1.72	0.54
1:G:177:PRO:HG2	1:G:178:TYR:HD1	1.73	0.53
1:F:199:ARG:NE	1:F:338:THR:HG22	2.20	0.53
1:E:304:TRP:CZ2	1:E:313:LEU:HB2	2.42	0.53
1:B:181:ARG:NH1	1:B:500:PRO:HG2	2.23	0.53
1:E:84:PHE:CA	1:E:437:ARG:HG3	2.38	0.53
1:D:126:LEU:HD11	1:D:411:VAL:HG23	1.89	0.53
1:D:124:ARG:HB3	1:D:408:ARG:CG	2.38	0.53
1:A:203:SER:O	1:A:331:ALA:HA	2.09	0.53
1:G:139:LEU:HD22	1:G:140:LEU:HD12	1.90	0.53
1:F:98:LYS:HD3	1:F:101:ARG:HH11	1.73	0.53
1:F:333:VAL:HG21	1:F:361:LEU:HD13	1.89	0.53
1:D:281:ARG:NH2	1:E:265:SER:HB3	2.22	0.53
1:G:334:ASP:O	1:G:337:CYS:HB2	2.09	0.53
1:G:395:TYR:HB3	1:G:399:GLU:HB3	1.89	0.53
1:A:158:ASP:O	1:A:316:THR:HA	2.08	0.53
1:D:82:ALA:O	1:D:437:ARG:NH1	2.42	0.53
1:G:157:VAL:O	1:G:159:PRO:HD3	2.08	0.53
1:D:433:HIS:NE2	1:D:459:GLU:HG3	2.24	0.53
1:G:433:HIS:HD2	1:G:433:HIS:O	1.91	0.53
1:G:238:SER:HB3	1:G:241:GLU:HB2	1.89	0.53
1:E:367:LEU:HD13	1:E:403:LEU:HD11	1.91	0.53
1:G:106:LYS:HE3	1:G:106:LYS:N	2.23	0.53
1:D:255:ARG:NH2	1:D:255:ARG:HG3	2.24	0.53
1:B:435:VAL:CG1	1:B:436:GLU:N	2.72	0.53
1:A:94:VAL:HG22	1:A:98:LYS:HB3	1.90	0.53
1:E:127:LEU:HD11	1:E:385:LEU:HD22	1.88	0.53
1:A:175:LEU:HG	1:A:313:LEU:HD21	1.89	0.53
1:D:358:LEU:HB3	1:D:385:LEU:HD11	1.90	0.53
1:A:428:LEU:HG	1:A:460:ARG:NH2	2.23	0.53
1:G:430:LEU:HD23	1:G:462:VAL:HB	1.89	0.53
1:F:88:LEU:HB2	1:F:434:GLU:O	2.08	0.53

Continued on next page...

Continued from previous page...

Atom-1	Atom-2	Interatomic distance (Å)	Clash overlap (Å)
1:G:456:ARG:CZ	1:G:456:ARG:HB2	2.33	0.53
1:D:96:GLY:O	1:D:100:LYS:HG3	2.08	0.53
1:B:177:PRO:HG2	1:B:178:TYR:CD1	2.43	0.53
1:D:497:ASN:N	1:D:497:ASN:HD22	2.05	0.53
1:E:83:PRO:O	1:E:437:ARG:HD3	2.09	0.53
1:A:159:PRO:HG2	1:A:356:ASP:OD1	2.09	0.53
1:E:139:LEU:C	1:E:139:LEU:HD23	2.30	0.53
1:A:124:ARG:HB3	1:A:408:ARG:CG	2.39	0.53
1:B:318:ARG:NH2	1:B:321:MET:HE3	2.22	0.53
1:G:84:PHE:CD1	1:G:84:PHE:N	2.77	0.53
1:G:139:LEU:C	1:G:139:LEU:HD23	2.30	0.53
1:D:367:LEU:HD22	1:D:371:LEU:HG	1.90	0.53
1:G:410:LEU:HD12	1:G:411:VAL:H	1.72	0.53
1:G:379:LEU:HD23	1:G:380:ARG:H	1.74	0.52
1:D:322:GLY:N	1:D:323:PRO:HD2	2.24	0.52
1:D:252:ASP:HB3	4:D:2018:HOH:O	2.09	0.52
1:F:176:ASN:O	1:F:182:THR:HB	2.09	0.52
1:A:259:GLU:HA	1:A:264:GLU:CG	2.39	0.52
1:A:259:GLU:HA	1:A:264:GLU:HG3	1.91	0.52
1:G:130:GLY:HA3	1:G:413:LEU:HB2	1.91	0.52
1:G:84:PHE:CB	1:G:435:VAL:HG11	2.39	0.52
1:A:432:GLU:CG	1:A:460:ARG:HD3	2.39	0.52
1:E:456:ARG:H	1:E:456:ARG:HD3	1.75	0.52
1:B:260:GLY:H	1:B:264:GLU:CD	2.13	0.52
1:E:384:GLY:O	1:E:385:LEU:CD1	2.58	0.52
1:A:433:HIS:NE2	1:A:459:GLU:HG3	2.25	0.52
1:A:136:LYS:O	1:A:140:LEU:HD13	2.09	0.52
1:F:154:MET:HA	1:F:351:LEU:CD2	2.39	0.52
1:A:207:ARG:HB2	1:A:363:LYS:HB3	1.92	0.52
1:E:105:GLU:OE2	1:E:118:PRO:HA	2.10	0.52
1:F:222:LEU:HD13	1:F:225:ARG:HH12	1.74	0.52
1:A:184:GLY:HA3	1:A:297:GLY:HA3	1.90	0.52
1:E:261:THR:O	1:E:264:GLU:HB2	2.10	0.52
1:B:214:GLU:O	1:B:217:ALA:HB3	2.09	0.52
1:B:166:LYS:HD2	1:B:495:PHE:HB2	1.92	0.52
1:B:304:TRP:CZ2	1:B:313:LEU:HB2	2.45	0.52
1:A:164:LEU:HA	1:A:314:PHE:CE2	2.45	0.52
1:B:180:GLN:NE2	1:B:504:GLU:CG	2.71	0.52
1:B:166:LYS:O	1:B:498:ARG:HG2	2.10	0.52
1:G:353:LEU:CD1	1:G:355:ILE:HD11	2.40	0.52
1:B:203:SER:O	1:B:331:ALA:HA	2.10	0.52

Continued on next page...

Continued from previous page...

Atom-1	Atom-2	Interatomic distance (Å)	Clash overlap (Å)
1:E:356:ASP:OD2	1:E:357:GLU:N	2.42	0.52
1:G:352:TRP:CZ2	1:G:380:ARG:HD3	2.44	0.51
1:F:340:ILE:CD1	1:F:341:LEU:HD13	2.40	0.51
1:D:252:ASP:O	1:D:255:ARG:HB2	2.09	0.51
1:D:159:PRO:HG3	1:D:317:TRP:CZ2	2.46	0.51
1:E:488:VAL:HG13	1:E:489:PRO:HD2	1.92	0.51
1:G:432:GLU:CG	1:G:460:ARG:HD3	2.35	0.51
1:D:313:LEU:HD23	1:D:314:PHE:N	2.25	0.51
1:G:244:HIS:HA	1:G:248:ILE:HG12	1.93	0.51
1:E:457:VAL:HG12	1:E:458:ARG:N	2.25	0.51
1:G:181:ARG:CZ	1:G:503:VAL:HG23	2.40	0.51
1:A:92:ARG:HG3	1:A:484:PRO:HB3	1.92	0.51
1:F:433:HIS:O	1:F:433:HIS:HD2	1.93	0.51
1:B:318:ARG:NH2	1:B:321:MET:CE	2.70	0.51
1:G:84:PHE:CD2	1:G:435:VAL:HG13	2.45	0.51
1:D:84:PHE:CB	1:D:437:ARG:HG3	2.40	0.51
1:B:154:MET:HB3	1:B:352:TRP:HB2	1.93	0.51
1:D:152:ASP:OD1	1:D:350:ARG:HD2	2.11	0.51
1:E:156:ILE:O	1:E:158:ASP:N	2.43	0.51
1:F:94:VAL:CG2	1:F:98:LYS:HG2	2.39	0.51
1:F:139:LEU:HB2	1:F:490:LEU:HD11	1.92	0.51
1:G:128:VAL:O	1:G:384:GLY:HA2	2.10	0.51
1:A:199:ARG:HD3	1:A:200:TYR:CE1	2.46	0.51
1:E:184:GLY:HA3	1:E:297:GLY:CA	2.40	0.51
1:G:315:ILE:HG23	1:G:332:TRP:CE3	2.45	0.51
1:F:313:LEU:HD23	1:F:314:PHE:N	2.25	0.51
1:G:169:ARG:NH1	1:G:171:LYS:HD3	2.23	0.51
1:B:413:LEU:CD2	1:B:475:ALA:HB2	2.40	0.51
1:G:173:ILE:HD12	1:G:183:LYS:HE3	1.93	0.51
1:D:272:GLU:HA	1:D:272:GLU:OE2	2.11	0.51
1:F:338:THR:O	1:F:341:LEU:HB2	2.11	0.51
1:G:338:THR:O	1:G:341:LEU:HB2	2.11	0.51
1:B:249:ALA:O	1:B:281:ARG:NH2	2.28	0.51
1:E:124:ARG:HB3	1:E:408:ARG:HB2	1.93	0.51
1:E:252:ASP:N	1:E:252:ASP:OD2	2.45	0.51
1:E:226:GLU:HG3	1:E:263:ALA:HB2	1.91	0.51
1:G:124:ARG:HB3	1:G:408:ARG:CB	2.41	0.50
1:A:105:GLU:HB2	1:A:109:GLN:CD	2.31	0.50
1:A:180:GLN:HB2	1:A:503:VAL:HG12	1.93	0.50
1:F:105:GLU:N	1:F:109:GLN:NE2	2.44	0.50
1:E:154:MET:HE3	1:E:156:ILE:HD11	1.92	0.50

Continued on next page...

Continued from previous page...

Atom-1	Atom-2	Interatomic distance (Å)	Clash overlap (Å)
1:F:177:PRO:HA	1:F:294:MET:HE1	1.92	0.50
1:A:84:PHE:HA	1:A:437:ARG:HG3	1.92	0.50
1:D:488:VAL:HG13	1:D:489:PRO:HD2	1.94	0.50
1:F:334:ASP:OD1	1:F:366:SER:OG	2.28	0.50
1:G:219:TYR:HB3	1:G:280:ALA:HB2	1.93	0.50
1:F:352:TRP:CZ2	1:F:380:ARG:HD3	2.46	0.50
1:A:154:MET:HE3	1:A:156:ILE:HD11	1.93	0.50
1:G:124:ARG:HB3	1:G:408:ARG:HG3	1.94	0.50
1:B:433:HIS:C	1:B:433:HIS:CD2	2.85	0.50
1:F:435:VAL:CG1	1:F:436:GLU:N	2.74	0.50
1:E:258:LEU:O	1:E:261:THR:OG1	2.25	0.50
1:B:139:LEU:C	1:B:139:LEU:HD23	2.31	0.50
1:A:456:ARG:CZ	1:G:437:ARG:HD3	2.42	0.50
1:E:287:LYS:C	1:E:289:PRO:HD2	2.31	0.50
1:A:200:TYR:O	1:A:204:VAL:HG23	2.11	0.50
1:E:352:TRP:HB3	1:E:354:PHE:CE2	2.46	0.50
1:B:259:GLU:HA	1:B:264:GLU:CD	2.31	0.50
1:D:417:ARG:NH1	1:E:479:PHE:O	2.38	0.50
1:G:251:PHE:CZ	1:G:277:LEU:HD13	2.47	0.50
1:F:340:ILE:HD11	1:F:341:LEU:HD13	1.94	0.50
1:A:265:SER:HB3	1:G:281:ARG:NH2	2.27	0.50
1:E:180:GLN:NE2	1:E:504:GLU:HG3	2.26	0.50
1:A:426:MET:HA	1:A:426:MET:CE	2.42	0.50
1:F:340:ILE:HD12	1:F:341:LEU:N	2.27	0.49
1:A:290:GLU:HG3	1:A:325:LEU:HD23	1.94	0.49
1:E:158:ASP:O	1:E:316:THR:HA	2.12	0.49
1:A:166:LYS:CE	1:A:497:ASN:ND2	2.75	0.49
1:B:76:GLN:C	1:B:78:GLU:N	2.63	0.49
1:A:249:ALA:O	1:A:281:ARG:NH2	2.37	0.49
1:B:328:LEU:O	1:B:331:ALA:HB3	2.12	0.49
1:B:292:VAL:C	1:B:294:MET:H	2.15	0.49
1:A:379:LEU:HD23	1:A:380:ARG:H	1.77	0.49
1:F:94:VAL:HG21	1:F:98:LYS:CG	2.41	0.49
1:G:497:ASN:N	1:G:497:ASN:ND2	2.61	0.49
1:F:435:VAL:HG13	1:F:436:GLU:N	2.28	0.49
1:F:337:CYS:HB3	1:F:366:SER:HB2	1.94	0.49
1:G:351:LEU:HD23	1:G:352:TRP:H	1.78	0.49
1:F:130:GLY:HA3	1:F:413:LEU:HB2	1.95	0.49
1:D:428:LEU:HD23	1:D:428:LEU:O	2.12	0.49
1:E:106:LYS:HD3	1:E:106:LYS:N	2.27	0.49
1:B:198:GLN:HA	1:B:198:GLN:OE1	2.12	0.49

Continued on next page...

Continued from previous page...

Atom-1	Atom-2	Interatomic distance (Å)	Clash overlap (Å)
1:G:222:LEU:HD12	1:G:225:ARG:NH1	2.27	0.49
1:D:139:LEU:HD23	1:D:139:LEU:C	2.33	0.49
1:G:225:ARG:O	1:G:229:LYS:HB2	2.13	0.49
1:A:169:ARG:NH1	1:A:171:LYS:HD3	2.27	0.49
1:D:156:ILE:HG22	1:D:158:ASP:HB2	1.94	0.49
1:F:379:LEU:CD2	1:F:380:ARG:N	2.75	0.49
1:F:378:GLY:O	1:F:380:ARG:NH2	2.46	0.49
1:G:154:MET:CE	1:G:156:ILE:HD11	2.30	0.49
1:E:98:LYS:HD2	1:E:101:ARG:NH2	2.28	0.49
1:E:313:LEU:HD23	1:E:314:PHE:N	2.28	0.49
1:B:199:ARG:HE	1:B:338:THR:HG22	1.77	0.49
1:A:345:GLU:H	1:A:345:GLU:CD	2.15	0.49
1:B:180:GLN:NE2	1:B:504:GLU:HG3	2.15	0.49
1:B:145:TYR:CE1	1:B:149:LEU:HD21	2.48	0.49
1:A:127:LEU:HD11	1:A:385:LEU:HD22	1.95	0.49
1:B:226:GLU:OE1	1:B:261:THR:HB	2.13	0.49
1:F:223:LEU:HD23	1:F:284:LEU:CD2	2.43	0.49
1:A:498:ARG:O	1:A:499:GLN:HG3	2.13	0.49
1:F:488:VAL:CG1	1:F:489:PRO:HD2	2.41	0.48
1:A:292:VAL:C	1:A:294:MET:H	2.16	0.48
1:G:175:LEU:CD1	1:G:313:LEU:HD21	2.43	0.48
1:D:352:TRP:CE2	1:D:380:ARG:HD3	2.47	0.48
1:A:241:GLU:HA	1:A:241:GLU:OE1	2.12	0.48
1:G:457:VAL:HG12	1:G:459:GLU:HG2	1.94	0.48
1:A:197:TRP:NE1	1:A:229:LYS:HG3	2.28	0.48
1:E:456:ARG:CG	1:E:456:ARG:NH2	2.75	0.48
1:F:437:ARG:HH21	1:G:456:ARG:HH11	1.61	0.48
1:G:157:VAL:HG21	1:G:355:ILE:HG23	1.95	0.48
1:A:433:HIS:CD2	1:A:433:HIS:C	2.86	0.48
1:G:326:ARG:N	1:G:327:PRO:HD2	2.28	0.48
1:B:318:ARG:HH21	1:B:321:MET:HE2	1.74	0.48
1:F:184:GLY:HA3	1:F:297:GLY:CA	2.41	0.48
1:B:196:ASP:OD1	1:B:199:ARG:HD3	2.12	0.48
1:B:248:ILE:O	1:D:265:SER:OG	2.27	0.48
1:F:326:ARG:HB3	1:F:327:PRO:CD	2.42	0.48
1:G:473:LEU:HD11	1:G:492:ILE:HD11	1.95	0.48
1:B:180:GLN:HB2	1:B:504:GLU:HG3	1.94	0.48
1:A:148:LEU:HD21	1:A:154:MET:SD	2.54	0.48
1:A:199:ARG:HE	1:A:338:THR:CG2	2.26	0.48
1:A:238:SER:HB3	1:A:241:GLU:HB2	1.94	0.48
1:B:287:LYS:C	1:B:289:PRO:HD2	2.34	0.48

Continued on next page...

Continued from previous page...

Atom-1	Atom-2	Interatomic distance (Å)	Clash overlap (Å)
1:D:179:ASP:O	1:D:182:THR:HG22	2.13	0.48
1:G:380:ARG:NH2	1:G:380:ARG:HG3	2.28	0.48
1:G:325:LEU:O	1:G:329:ILE:HG13	2.13	0.48
1:E:154:MET:CE	1:E:156:ILE:HD11	2.43	0.48
1:A:214:GLU:O	1:A:217:ALA:HB3	2.13	0.48
1:A:118:PRO:HB3	1:A:483:ARG:NH2	2.28	0.48
1:G:301:ILE:O	1:G:305:LEU:HG	2.13	0.48
1:B:94:VAL:HG21	1:B:98:LYS:HE3	1.94	0.48
1:D:288:LEU:O	1:D:289:PRO:C	2.51	0.48
1:D:433:HIS:O	1:D:433:HIS:CD2	2.67	0.48
1:E:430:LEU:HD23	1:E:462:VAL:CG2	2.43	0.48
1:F:185:TRP:CZ2	1:F:187:PHE:HA	2.49	0.48
1:A:488:VAL:HG13	1:A:489:PRO:HD2	1.95	0.48
1:A:130:GLY:HA3	1:A:413:LEU:HB2	1.95	0.48
1:F:89:ARG:HD2	1:F:434:GLU:OE1	2.14	0.48
1:A:175:LEU:CD1	1:A:313:LEU:HD21	2.44	0.48
1:E:203:SER:O	1:E:331:ALA:HA	2.13	0.48
1:G:252:ASP:O	1:G:255:ARG:HB2	2.14	0.48
1:G:88:LEU:HB2	1:G:434:GLU:O	2.14	0.48
1:E:104:ARG:NH1	1:E:104:ARG:HG3	2.28	0.48
1:G:378:GLY:O	1:G:380:ARG:NH2	2.47	0.48
1:B:238:SER:HB3	1:B:241:GLU:HB2	1.96	0.48
1:E:225:ARG:O	1:E:229:LYS:HB2	2.13	0.47
1:D:456:ARG:N	1:D:456:ARG:HD2	2.29	0.47
1:B:433:HIS:O	1:B:433:HIS:CD2	2.64	0.47
1:D:375:ARG:HG2	1:D:375:ARG:HH21	1.78	0.47
1:D:288:LEU:O	1:D:291:HIS:HB2	2.14	0.47
1:A:435:VAL:CG1	1:A:436:GLU:N	2.77	0.47
1:B:158:ASP:OD2	1:B:161:GLY:HA2	2.14	0.47
1:F:124:ARG:HB3	1:F:408:ARG:HB2	1.95	0.47
1:F:255:ARG:HG3	1:F:255:ARG:NH2	2.28	0.47
1:D:418:THR:OG1	1:E:405:ALA:HA	2.14	0.47
1:B:255:ARG:HG3	1:B:255:ARG:HH21	1.79	0.47
1:B:84:PHE:CB	1:B:435:VAL:HG11	2.45	0.47
1:F:290:GLU:HG3	1:F:325:LEU:HD23	1.95	0.47
1:A:251:PHE:CZ	1:A:277:LEU:HD13	2.48	0.47
1:F:139:LEU:C	1:F:139:LEU:CD2	2.82	0.47
1:B:352:TRP:CZ2	1:B:380:ARG:HD3	2.50	0.47
1:A:84:PHE:HE2	1:A:87:PHE:HB2	1.80	0.47
1:A:124:ARG:HB3	1:A:408:ARG:HG3	1.95	0.47
1:F:173:ILE:HG22	1:F:174:ILE:N	2.30	0.47

Continued on next page...

Continued from previous page...

Atom-1	Atom-2	Interatomic distance (Å)	Clash overlap (Å)
1:D:225:ARG:O	1:D:229:LYS:HB2	2.14	0.47
1:A:245:TRP:CE3	1:A:245:TRP:HA	2.49	0.47
1:F:337:CYS:CB	1:F:366:SER:HB2	2.45	0.47
1:D:419:ASP:HB2	1:E:405:ALA:CB	2.45	0.47
1:G:179:ASP:O	1:G:182:THR:HG22	2.14	0.47
1:E:301:ILE:HD12	1:E:335:VAL:HG11	1.97	0.47
1:D:328:LEU:O	1:D:331:ALA:HB3	2.15	0.47
1:B:144:ALA:O	1:B:148:LEU:HG	2.15	0.47
1:G:127:LEU:HD12	1:G:127:LEU:HA	1.67	0.47
1:A:105:GLU:HB2	1:A:109:GLN:NE2	2.30	0.47
1:D:215:GLU:HG2	1:D:219:TYR:CE1	2.49	0.47
1:G:99:LEU:HD13	1:G:484:PRO:HG2	1.97	0.47
1:A:223:LEU:HD23	1:A:284:LEU:HD22	1.97	0.47
1:E:259:GLU:HA	1:E:264:GLU:HG3	1.96	0.47
1:F:340:ILE:HD12	1:F:341:LEU:CD1	2.46	0.46
1:E:107:ALA:HB3	1:E:119:ARG:CD	2.37	0.46
1:E:497:ASN:ND2	1:E:497:ASN:N	2.61	0.46
1:B:133:GLY:N	2:B:701:ANP:O1B	2.41	0.46
1:G:346:GLU:HB3	1:G:349:ARG:NH1	2.31	0.46
1:A:279:SER:O	1:A:283:VAL:HG23	2.15	0.46
1:E:334:ASP:O	1:E:337:CYS:HB2	2.15	0.46
1:B:130:GLY:O	1:B:136:LYS:NZ	2.48	0.46
1:F:184:GLY:CA	1:F:297:GLY:HA3	2.43	0.46
1:B:145:TYR:CE1	1:B:149:LEU:HD11	2.51	0.46
1:A:433:HIS:O	1:A:433:HIS:CD2	2.66	0.46
1:F:200:TYR:O	1:F:204:VAL:HG23	2.15	0.46
1:F:417:ARG:NH1	1:G:479:PHE:O	2.47	0.46
1:B:497:ASN:N	1:B:497:ASN:HD22	2.13	0.46
1:G:106:LYS:H	1:G:106:LYS:HE3	1.79	0.46
1:A:469:ASN:O	1:B:482:ASN:HB2	2.15	0.46
1:B:353:LEU:HD22	1:B:355:ILE:HG13	1.98	0.46
1:E:346:GLU:HA	1:E:346:GLU:OE2	2.15	0.46
1:F:118:PRO:HB3	1:F:483:ARG:NH2	2.30	0.46
1:A:497:ASN:ND2	1:A:497:ASN:N	2.63	0.46
1:F:318:ARG:HD3	1:F:502:PHE:CE2	2.50	0.46
1:A:196:ASP:O	1:A:200:TYR:HD1	1.99	0.46
1:D:433:HIS:C	1:D:433:HIS:CD2	2.88	0.46
1:E:318:ARG:HH21	1:E:321:MET:HE2	1.80	0.46
1:B:416:SER:HB2	1:D:408:ARG:HD2	1.98	0.46
1:G:214:GLU:O	1:G:217:ALA:HB3	2.15	0.46
1:A:325:LEU:C	1:A:327:PRO:HD2	2.35	0.46

Continued on next page...

Continued from previous page...

Atom-1	Atom-2	Interatomic distance (Å)	Clash overlap (Å)
1:D:154:MET:CB	1:D:352:TRP:HB2	2.45	0.46
1:A:492:ILE:O	1:A:492:ILE:HG22	2.15	0.46
1:G:437:ARG:HG2	1:G:438:ASP:H	1.80	0.46
1:F:78:GLU:HG2	1:F:95:SER:HB3	1.97	0.46
1:A:113:ALA:HA	1:A:490:LEU:CD2	2.46	0.46
1:E:85:LYS:HD2	1:E:454:LEU:HD21	1.97	0.46
1:F:503:VAL:HG12	1:F:503:VAL:O	2.15	0.46
1:A:298:ASP:OD2	1:A:298:ASP:N	2.42	0.46
1:D:184:GLY:HA3	1:D:297:GLY:N	2.30	0.46
1:A:304:TRP:CZ2	1:A:313:LEU:HB2	2.51	0.46
1:G:323:PRO:HG2	1:G:324:ALA:H	1.81	0.46
1:D:111:THR:OG1	1:D:146:THR:HG21	2.15	0.46
1:D:413:LEU:CD2	1:D:475:ALA:HB2	2.27	0.46
1:E:366:SER:HA	4:E:2041:HOH:O	2.15	0.46
1:D:105:GLU:HB2	1:D:109:GLN:NE2	2.31	0.46
1:A:198:GLN:OE1	1:A:198:GLN:HA	2.16	0.46
1:G:315:ILE:HG23	1:G:332:TRP:HE3	1.81	0.45
1:B:420:PRO:HB2	1:D:428:LEU:HD22	1.98	0.45
1:E:435:VAL:CG1	1:E:436:GLU:N	2.80	0.45
1:G:127:LEU:HD12	1:G:383:ALA:O	2.16	0.45
1:D:292:VAL:C	1:D:294:MET:N	2.70	0.45
1:E:131:ALA:CB	1:E:415:GLY:HA2	2.37	0.45
1:F:128:VAL:O	1:F:384:GLY:HA2	2.16	0.45
1:A:154:MET:HE2	1:A:156:ILE:HD11	1.98	0.45
1:D:166:LYS:O	1:D:498:ARG:HG2	2.16	0.45
1:G:413:LEU:HD23	1:G:475:ALA:HB2	1.97	0.45
1:G:288:LEU:O	1:G:291:HIS:HB2	2.17	0.45
1:E:414:GLY:HA2	1:E:467:ILE:HG23	1.97	0.45
1:E:338:THR:O	1:E:341:LEU:HB2	2.16	0.45
1:A:156:ILE:O	1:A:158:ASP:N	2.50	0.45
1:E:184:GLY:HA3	1:E:296:ASP:C	2.37	0.45
1:E:118:PRO:HB3	1:E:483:ARG:NH2	2.31	0.45
1:F:288:LEU:HD23	1:F:288:LEU:HA	1.72	0.45
1:G:471:PRO:HG2	1:G:474:THR:OG1	2.16	0.45
1:F:226:GLU:OE1	1:F:261:THR:HB	2.17	0.45
1:B:189:ASN:ND2	1:B:298:ASP:HA	2.31	0.45
1:G:290:GLU:HG3	1:G:325:LEU:HD23	1.97	0.45
1:F:358:LEU:HB2	1:F:383:ALA:HB1	1.98	0.45
1:A:156:ILE:CG2	1:A:158:ASP:HB2	2.47	0.45
1:D:391:LEU:HD21	1:D:403:LEU:HD23	1.98	0.45
1:F:124:ARG:HB3	1:F:408:ARG:HG3	1.98	0.45

Continued on next page...

Continued from previous page...

Atom-1	Atom-2	Interatomic distance (Å)	Clash overlap (Å)
1:F:433:HIS:CD2	1:F:433:HIS:C	2.90	0.45
1:G:288:LEU:O	1:G:289:PRO:C	2.54	0.45
1:D:437:ARG:NH2	1:E:456:ARG:NH2	2.65	0.45
1:E:158:ASP:OD2	1:E:161:GLY:HA2	2.17	0.45
1:B:372:THR:HG22	1:B:373:LYS:CG	2.32	0.45
1:G:435:VAL:CG1	1:G:436:GLU:H	2.30	0.45
1:B:304:TRP:CH2	1:B:313:LEU:HB2	2.52	0.45
1:G:430:LEU:HD23	1:G:462:VAL:CG2	2.47	0.45
1:F:419:ASP:HB2	1:G:405:ALA:HB2	1.98	0.45
1:F:367:LEU:HD13	1:F:403:LEU:HD11	1.98	0.45
1:D:304:TRP:CZ2	1:D:313:LEU:HB2	2.51	0.45
1:B:315:ILE:HG23	1:B:332:TRP:CE3	2.52	0.45
1:F:222:LEU:HD13	1:F:225:ARG:NH1	2.32	0.45
1:F:288:LEU:O	1:F:289:PRO:C	2.55	0.45
1:A:99:LEU:HD22	1:A:486:ALA:HB3	1.98	0.45
1:A:337:CYS:HB3	1:A:366:SER:HB2	1.99	0.45
1:F:340:ILE:CD1	1:F:341:LEU:CD1	2.95	0.45
1:B:175:LEU:HB3	1:B:332:TRP:CZ3	2.52	0.45
1:D:133:GLY:N	2:D:701:ANP:O1B	2.34	0.45
1:E:180:GLN:HE21	1:E:504:GLU:CG	2.30	0.45
1:D:106:LYS:HG2	1:D:106:LYS:H	1.32	0.45
1:A:227:THR:HG22	1:A:242:LEU:HD12	1.99	0.45
1:B:180:GLN:CB	1:B:503:VAL:HG12	2.46	0.44
1:A:207:ARG:CB	1:A:363:LYS:HD3	2.47	0.44
1:D:105:GLU:OE2	1:D:118:PRO:HA	2.18	0.44
1:F:236:THR:O	1:F:238:SER:N	2.45	0.44
1:F:133:GLY:N	2:F:701:ANP:O1B	2.41	0.44
1:D:180:GLN:CB	1:D:503:VAL:HG12	2.47	0.44
1:F:177:PRO:HB3	1:F:294:MET:HE2	1.98	0.44
1:B:488:VAL:CG1	1:B:489:PRO:HD2	2.47	0.44
1:G:318:ARG:HH21	1:G:321:MET:HE1	1.83	0.44
1:D:158:ASP:O	1:D:316:THR:HA	2.18	0.44
1:A:354:PHE:CD1	1:A:382:VAL:HB	2.53	0.44
1:B:349:ARG:HD2	1:B:377:ALA:O	2.17	0.44
1:E:164:LEU:HD21	1:E:174:ILE:HD11	2.00	0.44
1:F:166:LYS:HE2	1:F:497:ASN:HD21	1.81	0.44
1:F:497:ASN:ND2	1:F:497:ASN:N	2.65	0.44
1:B:157:VAL:O	1:B:159:PRO:HD3	2.17	0.44
1:G:473:LEU:HB3	1:G:490:LEU:O	2.17	0.44
1:A:212:GLU:O	1:A:215:GLU:HB3	2.16	0.44
1:G:154:MET:CB	1:G:352:TRP:HB2	2.44	0.44

Continued on next page...

Continued from previous page...

Atom-1	Atom-2	Interatomic distance (Å)	Clash overlap (Å)
1:B:332:TRP:O	1:B:335:VAL:HB	2.17	0.44
1:F:306:GLU:O	1:F:308:PRO:HD3	2.17	0.44
1:B:299:PHE:CD1	1:B:299:PHE:C	2.91	0.44
1:B:103:THR:OG1	1:B:116:PRO:HG2	2.17	0.44
1:E:108:LYS:O	1:E:119:ARG:NH1	2.50	0.44
1:F:456:ARG:NH1	1:F:456:ARG:CG	2.75	0.44
1:F:356:ASP:CG	1:F:357:GLU:N	2.70	0.44
1:E:288:LEU:N	1:E:289:PRO:CD	2.81	0.44
1:B:154:MET:HA	1:B:351:LEU:CD2	2.47	0.44
1:D:124:ARG:HB3	1:D:408:ARG:HG3	1.99	0.44
1:D:419:ASP:HB2	1:E:405:ALA:HB2	1.98	0.44
1:B:134:THR:HG21	1:B:414:GLY:O	2.17	0.44
1:F:206:PRO:HG3	1:F:362:GLU:OE2	2.17	0.44
1:B:92:ARG:HB3	1:B:92:ARG:CZ	2.45	0.44
1:A:131:ALA:CB	1:A:415:GLY:HA2	2.39	0.44
1:F:353:LEU:HD22	1:F:355:ILE:HG12	1.98	0.44
1:E:343:LEU:HB3	1:E:349:ARG:NH2	2.33	0.44
1:D:340:ILE:HD12	1:D:341:LEU:HD12	1.99	0.44
1:G:436:GLU:HA	1:G:455:GLU:O	2.17	0.44
1:B:184:GLY:HA3	1:B:297:GLY:CA	2.48	0.44
1:D:148:LEU:HD21	1:D:154:MET:SD	2.57	0.44
1:G:430:LEU:HD23	1:G:462:VAL:CB	2.47	0.44
1:F:433:HIS:O	1:F:433:HIS:CD2	2.71	0.44
1:B:420:PRO:CB	1:D:428:LEU:HD22	2.47	0.44
1:A:345:GLU:N	1:A:345:GLU:OE1	2.39	0.44
1:B:158:ASP:O	1:B:316:THR:HA	2.18	0.44
1:E:392:ASP:OD1	1:E:404:ARG:NH2	2.36	0.44
1:G:426:MET:HA	1:G:426:MET:CE	2.48	0.44
1:B:84:PHE:CG	1:B:435:VAL:HG11	2.52	0.44
1:E:199:ARG:HH21	1:E:338:THR:HG22	1.83	0.44
1:E:192:ARG:HG3	1:E:302:ARG:NH1	2.33	0.44
1:F:287:LYS:C	1:F:289:PRO:HD2	2.38	0.44
1:B:134:THR:HA	1:B:472:ASP:OD1	2.18	0.44
1:D:200:TYR:O	1:D:204:VAL:HG23	2.18	0.44
1:G:234:ILE:O	1:G:236:THR:HG23	2.18	0.44
1:A:89:ARG:HD3	1:G:463:MET:SD	2.58	0.44
1:D:89:ARG:HD2	1:D:434:GLU:OE1	2.17	0.44
1:A:290:GLU:HB3	1:A:328:LEU:HD12	1.99	0.44
1:D:384:GLY:O	1:D:385:LEU:CD1	2.64	0.44
1:B:325:LEU:C	1:B:327:PRO:HD2	2.39	0.44
1:G:326:ARG:NH1	1:G:361:LEU:O	2.50	0.44

Continued on next page...

Continued from previous page...

Atom-1	Atom-2	Interatomic distance (Å)	Clash overlap (Å)
1:F:135:GLY:HA2	2:F:701:ANP:O1A	2.17	0.44
1:D:181:ARG:NH1	1:D:500:PRO:HG2	2.32	0.44
1:A:288:LEU:O	1:A:289:PRO:C	2.55	0.44
1:D:338:THR:O	1:D:341:LEU:HB2	2.18	0.43
1:B:164:LEU:HA	1:B:314:PHE:CE2	2.53	0.43
1:B:177:PRO:HG2	1:B:178:TYR:CE1	2.53	0.43
1:D:497:ASN:N	1:D:497:ASN:ND2	2.65	0.43
1:F:433:HIS:NE2	1:F:459:GLU:HG3	2.33	0.43
1:A:118:PRO:CB	1:A:483:ARG:NH2	2.81	0.43
1:G:217:ALA:O	1:G:221:ARG:HG3	2.18	0.43
1:F:419:ASP:HB2	1:G:405:ALA:CB	2.48	0.43
1:G:233:LEU:HA	1:G:233:LEU:HD23	1.85	0.43
1:A:304:TRP:CH2	1:A:313:LEU:HB2	2.53	0.43
1:G:159:PRO:HG2	1:G:356:ASP:OD1	2.19	0.43
1:E:139:LEU:O	1:E:139:LEU:HD23	2.18	0.43
1:D:292:VAL:O	1:D:294:MET:N	2.51	0.43
1:F:222:LEU:HA	1:F:225:ARG:CZ	2.48	0.43
1:E:180:GLN:HB2	1:E:504:GLU:HB3	2.00	0.43
1:E:308:PRO:C	1:E:310:GLY:H	2.20	0.43
1:E:427:SER:CB	1:E:464:PRO:HG3	2.48	0.43
1:D:328:LEU:HD22	1:D:332:TRP:CE2	2.53	0.43
1:A:126:LEU:HD11	1:A:411:VAL:HG23	1.99	0.43
1:E:279:SER:O	1:E:283:VAL:HG23	2.18	0.43
1:G:259:GLU:HA	1:G:264:GLU:HG3	2.00	0.43
1:B:491:GLU:HG3	1:B:491:GLU:O	2.18	0.43
1:A:417:ARG:NH1	1:B:479:PHE:O	2.51	0.43
1:G:379:LEU:HD22	1:G:380:ARG:N	2.33	0.43
1:A:420:PRO:HB2	1:B:428:LEU:CD2	2.47	0.43
1:B:325:LEU:O	1:B:326:ARG:C	2.57	0.43
1:B:288:LEU:O	1:B:289:PRO:C	2.56	0.43
1:A:173:ILE:HG23	1:A:183:LYS:HG3	2.01	0.43
1:B:388:THR:HG23	1:B:422:THR:HG23	1.99	0.43
1:E:139:LEU:HD22	1:E:140:LEU:HD12	2.01	0.43
1:G:199:ARG:NH2	1:G:339:SER:HA	2.34	0.43
1:A:315:ILE:HG23	1:A:332:TRP:CE3	2.54	0.43
1:G:178:TYR:N	1:G:178:TYR:CD1	2.85	0.43
1:B:145:TYR:O	1:B:148:LEU:HB2	2.19	0.43
1:A:177:PRO:CD	1:A:294:MET:HE3	2.48	0.43
1:E:419:ASP:O	1:E:423:ASN:ND2	2.52	0.43
1:B:288:LEU:N	1:B:289:PRO:CD	2.82	0.43
1:F:159:PRO:HG2	1:F:356:ASP:OD1	2.19	0.43

Continued on next page...

Continued from previous page...

Atom-1	Atom-2	Interatomic distance (Å)	Clash overlap (Å)
1:A:379:LEU:CD2	1:A:380:ARG:N	2.82	0.43
1:F:294:MET:SD	1:F:295:PRO:HD2	2.58	0.43
1:G:192:ARG:HG3	1:G:302:ARG:NH1	2.33	0.43
1:D:317:TRP:HB2	1:D:325:LEU:HD12	2.01	0.43
1:E:367:LEU:HD22	1:E:371:LEU:HG	2.01	0.43
1:E:400:ALA:O	1:E:404:ARG:HG3	2.17	0.43
1:E:214:GLU:O	1:E:217:ALA:HB3	2.18	0.43
1:G:197:TRP:NE1	1:G:229:LYS:HG3	2.34	0.43
1:D:184:GLY:CA	1:D:297:GLY:HA3	2.46	0.43
1:B:469:ASN:O	1:D:482:ASN:HB2	2.18	0.43
1:E:139:LEU:C	1:E:139:LEU:CD2	2.87	0.43
1:E:176:ASN:O	1:E:182:THR:HB	2.19	0.43
1:E:355:ILE:O	1:E:356:ASP:C	2.57	0.43
1:D:432:GLU:OE1	1:D:458:ARG:HD2	2.19	0.43
1:A:158:ASP:HA	1:A:159:PRO:HD3	1.81	0.43
1:E:105:GLU:HB2	1:E:109:GLN:NE2	2.34	0.43
1:B:169:ARG:NH2	1:B:169:ARG:HB2	2.33	0.43
1:E:318:ARG:HD2	1:E:502:PHE:CE2	2.54	0.43
1:B:241:GLU:HA	1:B:241:GLU:OE1	2.19	0.43
1:G:498:ARG:O	1:G:499:GLN:CG	2.64	0.42
1:D:358:LEU:HB3	1:D:385:LEU:CD1	2.47	0.42
1:E:184:GLY:HA3	1:E:297:GLY:N	2.34	0.42
1:G:318:ARG:HH21	1:G:321:MET:CE	2.31	0.42
1:E:318:ARG:NH2	1:E:321:MET:CE	2.82	0.42
1:D:259:GLU:HA	1:D:264:GLU:HG3	2.00	0.42
1:A:320:ASP:OD2	1:A:321:MET:HG3	2.19	0.42
1:F:379:LEU:HD22	1:F:381:VAL:HG23	1.99	0.42
1:G:84:PHE:CD2	1:G:435:VAL:CG1	3.03	0.42
1:F:437:ARG:NH2	1:G:456:ARG:HH11	2.16	0.42
1:F:353:LEU:HD22	1:F:355:ILE:HG13	2.02	0.42
1:B:154:MET:HA	1:B:351:LEU:HD23	2.00	0.42
1:F:126:LEU:HD12	1:F:409:SER:O	2.19	0.42
1:F:199:ARG:HG3	1:F:338:THR:HG21	2.00	0.42
1:B:246:THR:O	1:B:281:ARG:CD	2.67	0.42
1:F:333:VAL:HG21	1:F:361:LEU:CD1	2.50	0.42
1:G:430:LEU:HD23	1:G:462:VAL:HG21	2.01	0.42
1:E:138:VAL:HG21	1:E:473:LEU:HD21	2.01	0.42
1:D:166:LYS:HD2	1:D:495:PHE:HB2	2.02	0.42
1:F:82:ALA:O	1:F:437:ARG:NH1	2.53	0.42
1:E:104:ARG:HH11	1:E:104:ARG:HG3	1.83	0.42
1:A:227:THR:CG2	1:A:242:LEU:HD12	2.49	0.42

Continued on next page...

Continued from previous page...

Atom-1	Atom-2	Interatomic distance (Å)	Clash overlap (Å)
1:B:345:GLU:HA	1:B:345:GLU:OE1	2.19	0.42
1:A:326:ARG:NH1	1:A:361:LEU:O	2.52	0.42
1:F:357:GLU:HA	1:F:357:GLU:OE2	2.19	0.42
1:E:435:VAL:HG13	1:E:436:GLU:N	2.35	0.42
1:E:414:GLY:HA2	1:E:467:ILE:CG2	2.50	0.42
1:E:113:ALA:HA	1:E:490:LEU:HD23	2.01	0.42
1:A:375:ARG:NH1	2:G:701:ANP:O3G	2.53	0.42
1:B:363:LYS:HG3	1:B:395:TYR:CD2	2.55	0.42
1:G:294:MET:HA	1:G:295:PRO:HD3	1.84	0.42
1:E:84:PHE:CB	1:E:437:ARG:HG3	2.49	0.42
1:E:154:MET:HA	1:E:351:LEU:CD2	2.49	0.42
1:F:184:GLY:HA2	1:F:295:PRO:O	2.19	0.42
1:A:419:ASP:HB2	1:B:405:ALA:CB	2.50	0.42
1:D:202:LEU:HD13	1:D:221:ARG:NE	2.35	0.42
1:A:430:LEU:HA	1:A:430:LEU:HD12	1.64	0.42
1:G:203:SER:OG	1:G:334:ASP:OD1	2.30	0.42
1:D:83:PRO:O	1:D:437:ARG:HD3	2.18	0.42
1:E:158:ASP:HA	1:E:159:PRO:HD3	1.85	0.42
1:E:156:ILE:HG21	1:E:163:MET:HG3	2.02	0.42
1:E:246:THR:HB	1:E:284:LEU:HD23	2.01	0.42
1:G:184:GLY:HA3	1:G:297:GLY:CA	2.50	0.42
1:E:372:THR:HG22	1:E:373:LYS:HG3	2.01	0.42
1:B:173:ILE:HG22	1:B:174:ILE:N	2.35	0.42
1:G:119:ARG:HA	1:G:122:GLU:OE2	2.20	0.42
1:E:352:TRP:CZ2	1:E:380:ARG:HD3	2.54	0.42
1:B:117:MET:HG3	1:B:479:PHE:CE1	2.54	0.42
1:A:173:ILE:HG22	1:A:174:ILE:N	2.33	0.42
1:B:89:ARG:HD2	1:B:434:GLU:OE1	2.20	0.42
1:G:358:LEU:HB2	1:G:383:ALA:HB1	2.02	0.42
1:A:250:THR:OG1	1:A:253:ASP:OD2	2.31	0.42
1:B:283:VAL:O	1:B:286:ASP:HB2	2.20	0.42
1:B:180:GLN:HB2	1:B:504:GLU:CG	2.49	0.42
1:B:435:VAL:HG13	1:B:436:GLU:N	2.35	0.42
1:G:203:SER:O	1:G:331:ALA:HA	2.20	0.42
1:F:292:VAL:C	1:F:294:MET:N	2.73	0.42
1:D:498:ARG:O	1:D:499:GLN:CG	2.67	0.42
1:G:304:TRP:CZ2	1:G:313:LEU:HB2	2.55	0.42
1:F:222:LEU:CD1	1:F:225:ARG:NH1	2.83	0.42
1:E:181:ARG:NH1	1:E:500:PRO:HG2	2.35	0.42
1:E:417:ARG:NH1	1:F:479:PHE:O	2.53	0.42
1:D:435:VAL:CG1	1:D:436:GLU:N	2.82	0.42

Continued on next page...

Continued from previous page...

Atom-1	Atom-2	Interatomic distance (Å)	Clash overlap (Å)
1:E:241:GLU:O	1:E:244:HIS:HB3	2.19	0.42
1:B:205:VAL:O	1:B:205:VAL:HG12	2.19	0.42
1:E:169:ARG:NH1	1:E:170:ASP:N	2.64	0.41
1:E:168:GLY:HA3	1:E:499:GLN:NE2	2.35	0.41
1:G:437:ARG:CG	1:G:438:ASP:H	2.33	0.41
1:B:117:MET:HE2	1:B:121:ALA:CB	2.50	0.41
1:B:318:ARG:HD2	1:B:502:PHE:CE2	2.55	0.41
1:D:212:GLU:HB2	4:D:2014:HOH:O	2.19	0.41
1:E:340:ILE:C	1:E:340:ILE:HD12	2.40	0.41
1:E:498:ARG:O	1:E:499:GLN:CG	2.63	0.41
1:F:351:LEU:CD2	1:F:352:TRP:N	2.82	0.41
1:G:437:ARG:N	1:G:455:GLU:O	2.38	0.41
1:D:133:GLY:HA3	1:E:124:ARG:NH1	2.36	0.41
1:D:503:VAL:HG12	1:D:503:VAL:O	2.20	0.41
1:F:380:ARG:HG3	1:F:380:ARG:NH2	2.35	0.41
1:B:159:PRO:HG2	1:B:356:ASP:OD1	2.20	0.41
1:F:84:PHE:CB	1:F:435:VAL:HG11	2.50	0.41
1:A:184:GLY:HA3	1:A:297:GLY:CA	2.50	0.41
1:G:251:PHE:CE1	1:G:277:LEU:HD13	2.56	0.41
1:D:117:MET:HA	1:D:118:PRO:HD3	1.86	0.41
1:G:369:ASP:O	1:G:373:LYS:N	2.49	0.41
1:E:251:PHE:CZ	1:E:277:LEU:HB3	2.56	0.41
1:E:267:PHE:HB3	1:E:277:LEU:HG	2.03	0.41
1:D:180:GLN:HB2	1:D:503:VAL:HG12	2.01	0.41
1:E:284:LEU:HB3	1:E:288:LEU:HD12	2.01	0.41
1:A:433:HIS:CD2	1:A:459:GLU:HG3	2.56	0.41
1:D:290:GLU:HG3	1:D:325:LEU:HD23	2.02	0.41
1:B:117:MET:HA	1:B:118:PRO:HD3	1.93	0.41
1:F:279:SER:O	1:F:283:VAL:HG23	2.21	0.41
1:F:103:THR:OG1	1:F:116:PRO:HG2	2.20	0.41
1:E:233:LEU:HD23	1:E:233:LEU:HA	1.78	0.41
1:B:84:PHE:CD1	1:B:84:PHE:N	2.88	0.41
1:B:128:VAL:O	1:B:384:GLY:HA2	2.20	0.41
1:G:199:ARG:HE	1:G:338:THR:HG21	1.85	0.41
1:G:199:ARG:HE	1:G:338:THR:HG22	1.84	0.41
1:G:199:ARG:NE	1:G:338:THR:HG22	2.36	0.41
1:A:426:MET:HA	1:A:426:MET:HE2	2.02	0.41
1:F:284:LEU:HA	1:F:284:LEU:HD12	1.83	0.41
1:A:236:THR:O	1:A:238:SER:N	2.48	0.41
1:A:225:ARG:HG3	1:A:226:GLU:N	2.36	0.41
1:D:236:THR:O	1:D:238:SER:N	2.49	0.41

Continued on next page...

Continued from previous page...

Atom-1	Atom-2	Interatomic distance (Å)	Clash overlap (Å)
1:D:252:ASP:OD2	1:D:252:ASP:N	2.54	0.41
1:F:252:ASP:OD2	1:F:252:ASP:N	2.52	0.41
1:F:179:ASP:O	1:F:182:THR:HG22	2.21	0.41
1:D:243:PHE:CD1	1:D:243:PHE:C	2.93	0.41
1:E:413:LEU:HD23	1:E:413:LEU:HA	1.93	0.41
1:B:318:ARG:NH2	1:B:321:MET:HE2	2.34	0.41
1:F:154:MET:HE3	1:F:156:ILE:HD11	2.03	0.41
1:F:177:PRO:CA	1:F:294:MET:HE1	2.51	0.41
1:E:288:LEU:O	1:E:289:PRO:C	2.59	0.41
1:E:117:MET:HA	1:E:118:PRO:HD3	1.90	0.41
1:F:225:ARG:O	1:F:229:LYS:HB2	2.20	0.41
1:G:332:TRP:O	1:G:336:VAL:HG23	2.20	0.41
1:F:288:LEU:O	1:F:291:HIS:HB2	2.21	0.41
1:E:233:LEU:C	1:E:235:GLY:H	2.24	0.41
1:G:340:ILE:C	1:G:340:ILE:HD12	2.41	0.41
1:A:135:GLY:HA2	2:A:701:ANP:O1A	2.21	0.41
1:D:227:THR:CG2	1:D:242:LEU:HD12	2.50	0.41
1:E:76:GLN:HB3	1:E:77:GLY:H	1.68	0.41
1:D:143:LEU:HA	1:D:143:LEU:HD23	1.89	0.41
1:E:492:ILE:HD13	2:E:701:ANP:N3	2.36	0.41
1:A:82:ALA:O	1:A:437:ARG:NH2	2.54	0.41
1:D:124:ARG:HB3	1:D:408:ARG:CB	2.50	0.41
1:E:457:VAL:CG1	1:E:458:ARG:N	2.84	0.41
1:A:229:LYS:O	1:A:232:ALA:HB3	2.21	0.41
1:A:482:ASN:C	1:A:483:ARG:HG2	2.41	0.41
1:F:200:TYR:OH	1:F:302:ARG:HD2	2.22	0.41
1:E:113:ALA:HA	1:E:490:LEU:CD2	2.51	0.41
1:G:504:GLU:OE1	1:G:504:GLU:HA	2.21	0.41
1:G:308:PRO:C	1:G:310:GLY:H	2.22	0.41
1:F:494:GLN:NE2	1:F:494:GLN:HA	2.36	0.41
1:F:437:ARG:HH21	1:G:456:ARG:HD2	1.86	0.40
1:B:351:LEU:HD23	1:B:352:TRP:H	1.86	0.40
1:G:175:LEU:CD1	1:G:313:LEU:HD11	2.51	0.40
1:E:403:LEU:HD12	1:E:403:LEU:HA	1.91	0.40
1:B:345:GLU:OE2	1:B:376:LYS:HE2	2.21	0.40
1:B:343:LEU:HD23	1:B:343:LEU:HA	1.87	0.40
1:G:144:ALA:HB1	1:G:154:MET:CE	2.51	0.40
1:A:127:LEU:HD12	1:A:127:LEU:HA	1.87	0.40
1:A:358:LEU:HB2	1:A:383:ALA:HB1	2.03	0.40
1:F:294:MET:HA	1:F:295:PRO:HD3	1.96	0.40
1:B:259:GLU:HB3	4:B:2010:HOH:O	2.21	0.40

Continued on next page...

Continued from previous page...

Atom-1	Atom-2	Interatomic distance (Å)	Clash overlap (Å)
1:B:352:TRP:CE2	1:B:380:ARG:HD3	2.56	0.40
1:B:380:ARG:NH2	1:B:380:ARG:HG3	2.35	0.40
1:A:199:ARG:HH21	1:A:338:THR:C	2.24	0.40
1:D:215:GLU:O	1:D:218:SER:OG	2.27	0.40
1:E:267:PHE:CG	1:E:277:LEU:HG	2.56	0.40
1:F:202:LEU:HD13	1:F:221:ARG:CD	2.51	0.40
1:E:127:LEU:O	1:E:410:LEU:HD12	2.22	0.40
1:D:437:ARG:NH2	1:E:456:ARG:HH22	2.19	0.40
1:A:304:TRP:CE3	1:A:305:LEU:HD23	2.57	0.40
1:G:157:VAL:CG2	1:G:355:ILE:HA	2.52	0.40
1:D:202:LEU:HD13	1:D:202:LEU:HA	1.82	0.40
1:F:494:GLN:HA	1:F:494:GLN:HE21	1.87	0.40
1:F:299:PHE:CD1	1:F:299:PHE:C	2.93	0.40
1:A:94:VAL:HG22	1:A:98:LYS:CB	2.51	0.40
1:E:154:MET:HA	1:E:351:LEU:HD23	2.04	0.40
1:F:292:VAL:O	1:F:294:MET:N	2.54	0.40
1:D:164:LEU:HD21	1:D:174:ILE:HD11	2.03	0.40
1:B:246:THR:HB	1:B:284:LEU:HD23	2.04	0.40
1:D:288:LEU:O	1:D:291:HIS:N	2.54	0.40
1:E:217:ALA:O	1:E:221:ARG:HG3	2.22	0.40
1:B:99:LEU:HD23	1:B:486:ALA:HB3	2.03	0.40
1:G:82:ALA:HA	1:G:83:PRO:HD3	2.00	0.40
1:A:427:SER:OG	1:A:460:ARG:NH1	2.53	0.40
1:E:432:GLU:CG	1:E:460:ARG:HD3	2.50	0.40
1:E:503:VAL:O	1:E:504:GLU:HB3	2.22	0.40
1:B:103:THR:HB	1:B:116:PRO:O	2.22	0.40
1:F:110:VAL:O	1:F:116:PRO:HA	2.22	0.40
1:A:137:SER:O	1:A:138:VAL:C	2.59	0.40
1:G:145:TYR:CZ	1:G:149:LEU:HD11	2.57	0.40

All (1) symmetry-related close contacts are listed below. The label for Atom-2 includes the symmetry operator and encoded unit-cell translations to be applied.

Atom-1	Atom-2	Interatomic distance (Å)	Clash overlap (Å)
1:B:98:LYS:NZ	1:D:241:GLU:OE1[4_456]	2.08	0.12

5.3 Torsion angles

5.3.1 Protein backbone

In the following table, the Percentiles column shows the percent Ramachandran outliers of the chain as a percentile score with respect to all X-ray entries followed by that with respect to entries of similar resolution.

The Analysed column shows the number of residues for which the backbone conformation was analysed, and the total number of residues.

Mol	Chain	Analysed	Favoured	Allowed	Outliers	Percentiles	
1	A	407/437 (93%)	367 (90%)	36 (9%)	4 (1%)	19	61
1	B	413/437 (94%)	369 (89%)	39 (9%)	5 (1%)	16	56
1	D	413/437 (94%)	373 (90%)	36 (9%)	4 (1%)	19	61
1	E	410/437 (94%)	373 (91%)	34 (8%)	3 (1%)	26	70
1	F	409/437 (94%)	371 (91%)	32 (8%)	6 (2%)	13	50
1	G	408/437 (93%)	369 (90%)	35 (9%)	4 (1%)	19	61
All	All	2460/2622 (94%)	2222 (90%)	212 (9%)	26 (1%)	17	58

All (26) Ramachandran outliers are listed below:

Mol	Chain	Res	Type
1	F	289	PRO
1	F	293	THR
1	B	125	HIS
1	B	189	ASN
1	D	289	PRO
1	D	293	THR
1	D	480	ALA
1	G	189	ASN
1	G	289	PRO
1	A	189	ASN
1	A	293	THR
1	B	293	THR
1	E	125	HIS
1	A	206	PRO
1	A	499	GLN
1	D	499	GLN
1	E	289	PRO
1	F	107	ALA
1	F	189	ASN
1	F	503	VAL

Continued on next page...

Continued from previous page...

Mol	Chain	Res	Type
1	G	125	HIS
1	F	499	GLN
1	G	234	ILE
1	B	289	PRO
1	B	75	GLY
1	E	234	ILE

5.3.2 Protein sidechains ⓘ

In the following table, the Percentiles column shows the percent sidechain outliers of the chain as a percentile score with respect to all X-ray entries followed by that with respect to entries of similar resolution.

The Analysed column shows the number of residues for which the sidechain conformation was analysed, and the total number of residues.

Mol	Chain	Analysed	Rotameric	Outliers	Percentiles	
1	A	344/364 (94%)	315 (92%)	29 (8%)	14	45
1	B	348/364 (96%)	316 (91%)	32 (9%)	11	40
1	D	347/364 (95%)	314 (90%)	33 (10%)	11	38
1	E	346/364 (95%)	315 (91%)	31 (9%)	12	41
1	F	344/364 (94%)	313 (91%)	31 (9%)	12	41
1	G	344/364 (94%)	319 (93%)	25 (7%)	17	52
All	All	2073/2184 (95%)	1892 (91%)	181 (9%)	13	43

All (181) residues with a non-rotameric sidechain are listed below:

Mol	Chain	Res	Type
1	A	78	GLU
1	A	84	PHE
1	A	89	ARG
1	A	136	LYS
1	A	143	LEU
1	A	202	LEU
1	A	251	PHE
1	A	252	ASP
1	A	255	ARG
1	A	277	LEU
1	A	284	LEU
1	A	294	MET

Continued on next page...

Continued from previous page...

Mol	Chain	Res	Type
1	A	313	LEU
1	A	328	LEU
1	A	338	THR
1	A	351	LEU
1	A	353	LEU
1	A	366	SER
1	A	367	LEU
1	A	379	LEU
1	A	385	LEU
1	A	399	GLU
1	A	416	SER
1	A	428	LEU
1	A	430	LEU
1	A	433	HIS
1	A	438	ASP
1	A	483	ARG
1	A	497	ASN
1	B	89	ARG
1	B	92	ARG
1	B	94	VAL
1	B	104	ARG
1	B	142	GLU
1	B	143	LEU
1	B	154	MET
1	B	169	ARG
1	B	202	LEU
1	B	233	LEU
1	B	251	PHE
1	B	252	ASP
1	B	254	LEU
1	B	277	LEU
1	B	294	MET
1	B	309	ASN
1	B	328	LEU
1	B	341	LEU
1	B	350	ARG
1	B	351	LEU
1	B	353	LEU
1	B	366	SER
1	B	367	LEU
1	B	372	THR
1	B	379	LEU

Continued on next page...

Continued from previous page...

Mol	Chain	Res	Type
1	B	385	LEU
1	B	417	ARG
1	B	430	LEU
1	B	433	HIS
1	B	456	ARG
1	B	490	LEU
1	B	504	GLU
1	D	89	ARG
1	D	92	ARG
1	D	94	VAL
1	D	106	LYS
1	D	136	LYS
1	D	143	LEU
1	D	180	GLN
1	D	192	ARG
1	D	202	LEU
1	D	212	GLU
1	D	233	LEU
1	D	251	PHE
1	D	277	LEU
1	D	284	LEU
1	D	289	PRO
1	D	294	MET
1	D	313	LEU
1	D	328	LEU
1	D	350	ARG
1	D	351	LEU
1	D	353	LEU
1	D	366	SER
1	D	367	LEU
1	D	372	THR
1	D	379	LEU
1	D	385	LEU
1	D	399	GLU
1	D	409	SER
1	D	430	LEU
1	D	433	HIS
1	D	482	ASN
1	D	483	ARG
1	D	490	LEU
1	E	76	GLN
1	E	89	ARG

Continued on next page...

Continued from previous page...

Mol	Chain	Res	Type
1	E	106	LYS
1	E	143	LEU
1	E	169	ARG
1	E	202	LEU
1	E	210	THR
1	E	240	ARG
1	E	251	PHE
1	E	252	ASP
1	E	254	LEU
1	E	255	ARG
1	E	277	LEU
1	E	294	MET
1	E	296	ASP
1	E	313	LEU
1	E	328	LEU
1	E	341	LEU
1	E	345	GLU
1	E	351	LEU
1	E	353	LEU
1	E	367	LEU
1	E	379	LEU
1	E	385	LEU
1	E	399	GLU
1	E	428	LEU
1	E	430	LEU
1	E	433	HIS
1	E	456	ARG
1	E	497	ASN
1	E	498	ARG
1	F	89	ARG
1	F	92	ARG
1	F	132	THR
1	F	136	LYS
1	F	143	LEU
1	F	180	GLN
1	F	194	ASP
1	F	202	LEU
1	F	233	LEU
1	F	251	PHE
1	F	277	LEU
1	F	284	LEU
1	F	289	PRO

Continued on next page...

Continued from previous page...

Mol	Chain	Res	Type
1	F	294	MET
1	F	313	LEU
1	F	328	LEU
1	F	341	LEU
1	F	345	GLU
1	F	351	LEU
1	F	366	SER
1	F	367	LEU
1	F	375	ARG
1	F	379	LEU
1	F	385	LEU
1	F	399	GLU
1	F	428	LEU
1	F	430	LEU
1	F	433	HIS
1	F	456	ARG
1	F	490	LEU
1	F	497	ASN
1	G	84	PHE
1	G	89	ARG
1	G	106	LYS
1	G	126	LEU
1	G	136	LYS
1	G	143	LEU
1	G	202	LEU
1	G	251	PHE
1	G	252	ASP
1	G	277	LEU
1	G	284	LEU
1	G	289	PRO
1	G	294	MET
1	G	313	LEU
1	G	351	LEU
1	G	353	LEU
1	G	367	LEU
1	G	379	LEU
1	G	399	GLU
1	G	428	LEU
1	G	430	LEU
1	G	433	HIS
1	G	438	ASP
1	G	456	ARG

Continued on next page...

Continued from previous page...

Mol	Chain	Res	Type
1	G	490	LEU

Some sidechains can be flipped to improve hydrogen bonding and reduce clashes. All (40) such sidechains are listed below:

Mol	Chain	Res	Type
1	A	160	ASN
1	A	180	GLN
1	A	433	HIS
1	A	497	ASN
1	A	499	GLN
1	B	129	ASN
1	B	180	GLN
1	B	401	GLN
1	B	423	ASN
1	B	433	HIS
1	B	494	GLN
1	B	497	ASN
1	B	499	GLN
1	D	160	ASN
1	D	180	GLN
1	D	423	ASN
1	D	433	HIS
1	D	482	ASN
1	D	494	GLN
1	D	497	ASN
1	D	499	GLN
1	E	76	GLN
1	E	180	GLN
1	E	423	ASN
1	E	433	HIS
1	E	494	GLN
1	E	497	ASN
1	E	499	GLN
1	F	109	GLN
1	F	129	ASN
1	F	423	ASN
1	F	433	HIS
1	F	494	GLN
1	F	497	ASN
1	F	499	GLN
1	G	180	GLN
1	G	423	ASN

Continued on next page...

Continued from previous page...

Mol	Chain	Res	Type
1	G	433	HIS
1	G	497	ASN
1	G	499	GLN

5.3.3 RNA [i](#)

There are no RNA molecules in this entry.

5.4 Non-standard residues in protein, DNA, RNA chains [i](#)

There are no non-standard protein/DNA/RNA residues in this entry.

5.5 Carbohydrates [i](#)

There are no carbohydrates in this entry.

5.6 Ligand geometry [i](#)

Of 7 ligands modelled in this entry, 1 is monoatomic - leaving 6 for Mogul analysis.

In the following table, the Counts columns list the number of bonds (or angles) for which Mogul statistics could be retrieved, the number of bonds (or angles) that are observed in the model and the number of bonds (or angles) that are defined in the chemical component dictionary. The Link column lists molecule types, if any, to which the group is linked. The Z score for a bond length (or angle) is the number of standard deviations the observed value is removed from the expected value. A bond length (or angle) with $|Z| > 2$ is considered an outlier worth inspection. RMSZ is the root-mean-square of all Z scores of the bond lengths (or angles).

Mol	Type	Chain	Res	Link	Bond lengths			Bond angles		
					Counts	RMSZ	$\# Z > 2$	Counts	RMSZ	$\# Z > 2$
2	ANP	A	701	-	27,33,33	2.10	10 (37%)	30,52,52	2.01	5 (16%)
2	ANP	B	701	-	27,33,33	2.10	10 (37%)	30,52,52	2.03	4 (13%)
2	ANP	D	701	-	27,33,33	2.13	9 (33%)	30,52,52	2.02	6 (20%)
2	ANP	E	701	-	27,33,33	2.07	9 (33%)	30,52,52	2.04	6 (20%)
2	ANP	F	701	-	27,33,33	2.04	10 (37%)	30,52,52	2.07	6 (20%)
2	ANP	G	701	-	27,33,33	2.03	10 (37%)	30,52,52	2.05	6 (20%)

In the following table, the Chirals column lists the number of chiral outliers, the number of chiral centers analysed, the number of these observed in the model and the number defined in the chemical

component dictionary. Similar counts are reported in the Torsion and Rings columns. '-' means no outliers of that kind were identified.

Mol	Type	Chain	Res	Link	Chirals	Torsions	Rings
2	ANP	A	701	-	-	0/12/38/38	0/3/3/3
2	ANP	B	701	-	-	0/12/38/38	0/3/3/3
2	ANP	D	701	-	-	0/12/38/38	0/3/3/3
2	ANP	E	701	-	-	0/12/38/38	0/3/3/3
2	ANP	F	701	-	-	0/12/38/38	0/3/3/3
2	ANP	G	701	-	-	0/12/38/38	0/3/3/3

All (58) bond length outliers are listed below:

Mol	Chain	Res	Type	Atoms	Z	Observed(Å)	Ideal(Å)
2	G	701	ANP	PG-O3G	-2.91	1.48	1.56
2	E	701	ANP	PG-O3G	-2.89	1.48	1.56
2	E	701	ANP	O4'-C4'	-2.86	1.38	1.45
2	A	701	ANP	O4'-C4'	-2.81	1.38	1.45
2	A	701	ANP	PG-O3G	-2.75	1.49	1.56
2	D	701	ANP	O4'-C4'	-2.71	1.38	1.45
2	E	701	ANP	PB-O2B	-2.70	1.49	1.56
2	D	701	ANP	PG-O3G	-2.63	1.49	1.56
2	F	701	ANP	PG-O3G	-2.62	1.49	1.56
2	B	701	ANP	O4'-C4'	-2.59	1.39	1.45
2	B	701	ANP	PG-O3G	-2.58	1.49	1.56
2	G	701	ANP	O4'-C4'	-2.45	1.39	1.45
2	D	701	ANP	PB-O2B	-2.43	1.49	1.56
2	B	701	ANP	PB-O2B	-2.41	1.50	1.56
2	G	701	ANP	PB-O2B	-2.39	1.50	1.56
2	F	701	ANP	O4'-C4'	-2.38	1.39	1.45
2	A	701	ANP	PB-O2B	-2.36	1.50	1.56
2	F	701	ANP	PB-O2B	-2.33	1.50	1.56
2	G	701	ANP	PB-N3B	2.07	1.68	1.63
2	A	701	ANP	C4-N3	2.16	1.38	1.35
2	F	701	ANP	PB-N3B	2.17	1.69	1.63
2	F	701	ANP	C2-N1	2.30	1.38	1.33
2	A	701	ANP	C2-N1	2.40	1.38	1.33
2	E	701	ANP	C2-N1	2.46	1.38	1.33
2	B	701	ANP	PB-N3B	2.52	1.70	1.63
2	E	701	ANP	PB-N3B	2.55	1.70	1.63
2	D	701	ANP	C2-N1	2.56	1.38	1.33
2	G	701	ANP	C2-N1	2.58	1.38	1.33
2	A	701	ANP	PB-N3B	2.65	1.70	1.63
2	B	701	ANP	PB-O3A	2.68	1.62	1.59
2	B	701	ANP	C2-N1	2.68	1.39	1.33

Continued on next page...

Continued from previous page...

Mol	Chain	Res	Type	Atoms	Z	Observed(Å)	Ideal(Å)
2	A	701	ANP	C6-N6	2.76	1.43	1.34
2	D	701	ANP	PB-N3B	2.77	1.70	1.63
2	D	701	ANP	C6-N6	2.81	1.43	1.34
2	F	701	ANP	C6-N6	2.83	1.43	1.34
2	B	701	ANP	C6-N6	2.83	1.43	1.34
2	E	701	ANP	C6-N6	2.85	1.43	1.34
2	G	701	ANP	C6-N6	2.90	1.43	1.34
2	G	701	ANP	C5-N7	2.94	1.49	1.39
2	D	701	ANP	C5-N7	2.95	1.49	1.39
2	B	701	ANP	C5-N7	3.00	1.49	1.39
2	F	701	ANP	C5-N7	3.02	1.49	1.39
2	A	701	ANP	C5-N7	3.05	1.49	1.39
2	E	701	ANP	C5-N7	3.10	1.49	1.39
2	G	701	ANP	PB-O3A	3.12	1.63	1.59
2	F	701	ANP	PB-O3A	3.29	1.63	1.59
2	G	701	ANP	PG-O1G	3.33	1.49	1.46
2	E	701	ANP	PG-O1G	3.34	1.49	1.46
2	F	701	ANP	PG-O1G	3.48	1.50	1.46
2	D	701	ANP	PG-O1G	3.70	1.50	1.46
2	B	701	ANP	PG-O1G	3.80	1.50	1.46
2	A	701	ANP	PG-O1G	3.95	1.50	1.46
2	G	701	ANP	PG-N3B	4.36	1.74	1.63
2	F	701	ANP	PG-N3B	4.75	1.75	1.63
2	E	701	ANP	PG-N3B	4.98	1.76	1.63
2	B	701	ANP	PG-N3B	5.01	1.76	1.63
2	A	701	ANP	PG-N3B	5.07	1.76	1.63
2	D	701	ANP	PG-N3B	5.33	1.77	1.63

All (33) bond angle outliers are listed below:

Mol	Chain	Res	Type	Atoms	Z	Observed(°)	Ideal(°)
2	B	701	ANP	O1G-PG-N3B	-6.96	101.22	111.90
2	F	701	ANP	O1G-PG-N3B	-6.81	101.45	111.90
2	D	701	ANP	O1G-PG-N3B	-6.75	101.54	111.90
2	E	701	ANP	O1G-PG-N3B	-6.73	101.58	111.90
2	G	701	ANP	O1G-PG-N3B	-6.69	101.64	111.90
2	A	701	ANP	O1G-PG-N3B	-6.39	102.11	111.90
2	F	701	ANP	O3A-PB-N3B	-2.23	100.29	106.44
2	G	701	ANP	C2'-C1'-N9	-2.13	111.04	114.29
2	D	701	ANP	O3A-PB-N3B	-2.11	100.63	106.44
2	F	701	ANP	C2'-C1'-N9	-2.10	111.08	114.29
2	E	701	ANP	C2'-C1'-N9	-2.01	111.22	114.29

Continued on next page...

Continued from previous page...

Mol	Chain	Res	Type	Atoms	Z	Observed(°)	Ideal(°)
2	D	701	ANP	O4'-C4'-C5'	2.10	116.83	109.32
2	A	701	ANP	O4'-C4'-C5'	2.13	116.93	109.32
2	G	701	ANP	C4'-O4'-C1'	2.20	112.14	109.72
2	B	701	ANP	O4'-C4'-C5'	2.24	117.32	109.32
2	E	701	ANP	O4'-C4'-C5'	2.24	117.33	109.32
2	E	701	ANP	C4'-O4'-C1'	2.27	112.22	109.72
2	G	701	ANP	O4'-C4'-C5'	2.30	117.56	109.32
2	A	701	ANP	C4'-O4'-C1'	2.37	112.32	109.72
2	D	701	ANP	C4'-O4'-C1'	2.47	112.43	109.72
2	F	701	ANP	O4'-C4'-C5'	2.64	118.77	109.32
2	D	701	ANP	O2B-PB-O1B	3.25	116.78	110.00
2	A	701	ANP	O2B-PB-O1B	3.42	117.13	110.00
2	B	701	ANP	O2B-PB-O1B	3.44	117.17	110.00
2	E	701	ANP	O2B-PB-O1B	3.44	117.18	110.00
2	F	701	ANP	O2B-PB-O1B	3.49	117.28	110.00
2	G	701	ANP	O2B-PB-O1B	3.51	117.32	110.00
2	D	701	ANP	N3-C2-N1	5.83	133.35	128.89
2	B	701	ANP	N3-C2-N1	5.91	133.42	128.89
2	F	701	ANP	N3-C2-N1	5.95	133.45	128.89
2	A	701	ANP	N3-C2-N1	6.03	133.51	128.89
2	G	701	ANP	N3-C2-N1	6.05	133.52	128.89
2	E	701	ANP	N3-C2-N1	6.10	133.57	128.89

There are no chirality outliers.

There are no torsion outliers.

There are no ring outliers.

6 monomers are involved in 9 short contacts:

Mol	Chain	Res	Type	Clashes	Symm-Clashes
2	A	701	ANP	1	0
2	B	701	ANP	2	0
2	D	701	ANP	1	0
2	E	701	ANP	2	0
2	F	701	ANP	2	0
2	G	701	ANP	1	0

5.7 Other polymers ⓘ

There are no such residues in this entry.

5.8 Polymer linkage issues ⓘ

There are no chain breaks in this entry.

6 Fit of model and data ⓘ

6.1 Protein, DNA and RNA chains ⓘ

EDS was not executed - this section will therefore be empty.

6.2 Non-standard residues in protein, DNA, RNA chains ⓘ

EDS was not executed - this section will therefore be empty.

6.3 Carbohydrates ⓘ

EDS was not executed - this section will therefore be empty.

6.4 Ligands ⓘ

EDS was not executed - this section will therefore be empty.

6.5 Other polymers ⓘ

EDS was not executed - this section will therefore be empty.