



Full wwPDB X-ray Structure Validation Report ⓘ

Jan 23, 2017 – 06:39 PM EST

PDB ID : 5GLS
Title : Structure of bovine Lactoperoxidase with a partially modified covalent bond with heme moiety
Authors : Tiwari, P.; Singh, P.K.; Sirohi, H.V.; Kaur, P.; Sharma, S.; Singh, T.P.
Deposited on : 2016-07-12
Resolution : 1.93 Å(reported)

This is a Full wwPDB X-ray Structure Validation Report for a publicly released PDB entry.

We welcome your comments at validation@mail.wwpdb.org

A user guide is available at

<http://wwpdb.org/validation/2016/XrayValidationReportHelp>

with specific help available everywhere you see the ⓘ symbol.

The following versions of software and data (see [references ⓘ](#)) were used in the production of this report:

MolProbity : 4.02b-467
Mogul : 1.7.1 (RC1), CSD as537be (2016)
Xtriage (Phenix) : 1.9-1692
EDS : rb-20028442
Percentile statistics : 20151230.v01 (using entries in the PDB archive December 30th 2015)
Refmac : 5.8.0135
CCP4 : 6.5.0
Ideal geometry (proteins) : Engh & Huber (2001)
Ideal geometry (DNA, RNA) : Parkinson et al. (1996)
Validation Pipeline (wwPDB-VP) : rb-20028442

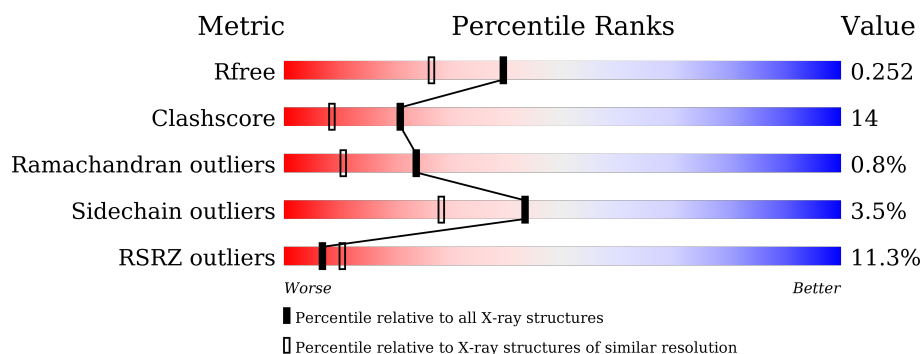
1 Overall quality at a glance

The following experimental techniques were used to determine the structure:

X-RAY DIFFRACTION

The reported resolution of this entry is 1.93 Å.

Percentile scores (ranging between 0-100) for global validation metrics of the entry are shown in the following graphic. The table shows the number of entries on which the scores are based.



Metric	Whole archive (#Entries)	Similar resolution (#Entries, resolution range(Å))
R_{free}	91344	2910 (1.96-1.92)
Clashscore	102246	3095 (1.96-1.92)
Ramachandran outliers	100387	3062 (1.96-1.92)
Sidechain outliers	100360	3062 (1.96-1.92)
RSRZ outliers	91569	2915 (1.96-1.92)

The table below summarises the geometric issues observed across the polymeric chains and their fit to the electron density. The red, orange, yellow and green segments on the lower bar indicate the fraction of residues that contain outliers for ≥ 3 , 2, 1 and 0 types of geometric quality criteria. A grey segment represents the fraction of residues that are not modelled. The numeric value for each fraction is indicated below the corresponding segment, with a dot representing fractions $\leq 5\%$. The upper red bar (where present) indicates the fraction of residues that have poor fit to the electron density. The numeric value is given above the bar.

Mol	Chain	Length	Quality of chain
1	A	595	<div> <div>11%</div> <div>80%</div> <div>17%</div> <div>.</div> </div>

The following table lists non-polymeric compounds, carbohydrate monomers and non-standard residues in protein, DNA, RNA chains that are outliers for geometric or electron-density-fit criteria:

Mol	Type	Chain	Res	Chirality	Geometry	Clashes	Electron density
6	IOD	A	709	-	-	X	-
6	IOD	A	710	-	-	X	-

Continued on next page...

Continued from previous page...

Mol	Type	Chain	Res	Chirality	Geometry	Clashes	Electron density
6	IOD	A	713	-	-	X	-
6	IOD	A	714	-	-	X	-
6	IOD	A	716	-	-	X	-
6	IOD	A	719	-	-	X	-
6	IOD	A	720	-	-	X	-
6	IOD	A	723	-	-	X	-
6	IOD	A	724	-	-	X	-
6	IOD	A	725	-	-	X	-
7	OSM	A	727	-	-	X	X
7	OSM	A	728	-	-	X	-
8	GOL	A	729	-	-	-	X

2 Entry composition [i](#)

There are 9 unique types of molecules in this entry. The entry contains 5270 atoms, of which 0 are hydrogens and 0 are deuteriums.

In the tables below, the ZeroOcc column contains the number of atoms modelled with zero occupancy, the AltConf column contains the number of residues with at least one atom in alternate conformation and the Trace column contains the number of residues modelled with at most 2 atoms.

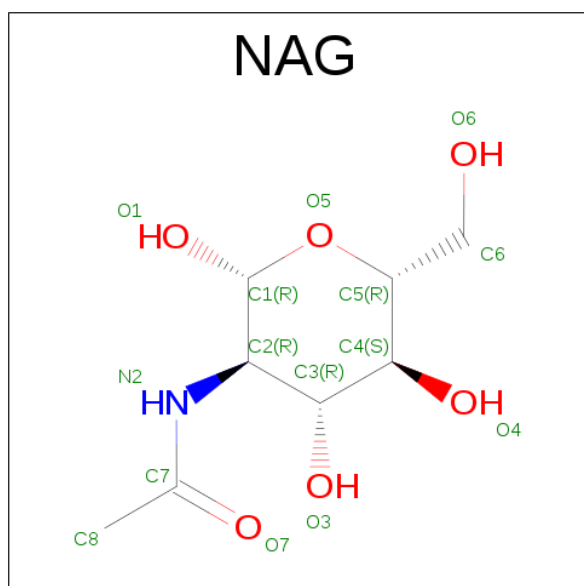
- Molecule 1 is a protein called Lactoperoxidase.

Mol	Chain	Residues	Atoms						ZeroOcc	AltConf	Trace
			Total	C	N	O	P	S			
1	A	595	4775	3035	848	864	1	27	0	1	0

There are 3 discrepancies between the modelled and reference sequences:

Chain	Residue	Modelled	Actual	Comment	Reference
A	254	SER	PHE	engineered mutation	UNP P80025
A	410	LYS	ASP	engineered mutation	UNP P80025
A	547	MET	VAL	engineered mutation	UNP P80025

- Molecule 2 is N-ACETYL-D-GLUCOSAMINE (three-letter code: NAG) (formula: C₈H₁₅NO₆).



Mol	Chain	Residues	Atoms				ZeroOcc	AltConf
2	A	1	Total	C	N	O	0	0
			14	8	1	5		
2	A	1	Total	C	N	O	0	0
			14	8	1	5		

Continued on next page...

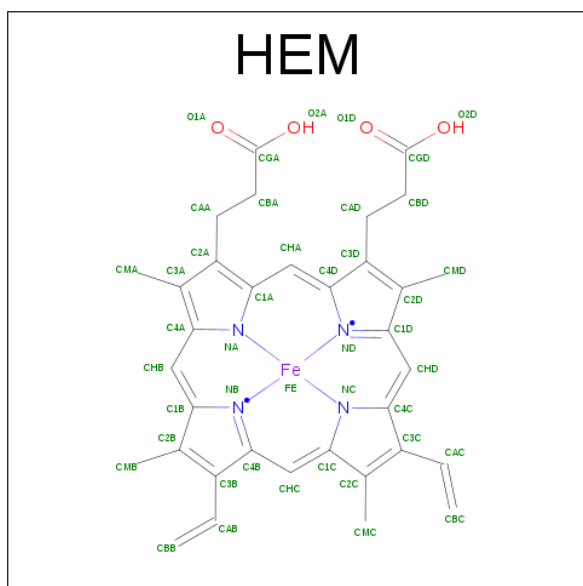
Continued from previous page...

Mol	Chain	Residues	Atoms				ZeroOcc	AltConf
2	A	1	Total	C	N	O	0	0
			14	8	1	5		
2	A	1	Total	C	N	O	0	0
			14	8	1	5		
2	A	1	Total	C	N	O	0	0
			14	8	1	5		

- Molecule 3 is CALCIUM ION (three-letter code: CA) (formula: Ca).

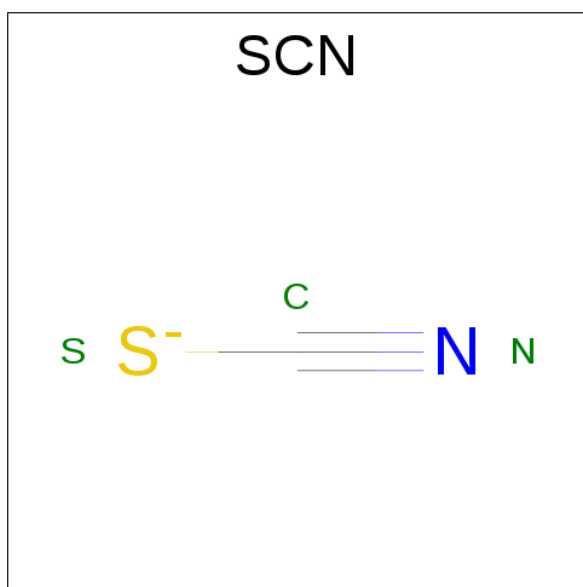
Mol	Chain	Residues	Atoms		ZeroOcc	AltConf
3	A	1	Total	Ca	0	0
			1	1		

- Molecule 4 is PROTOPORPHYRIN IX CONTAINING FE (three-letter code: HEM) (formula: $C_{34}H_{32}FeN_4O_4$).



Mol	Chain	Residues	Atoms					ZeroOcc	AltConf
4	A	1	Total	C	Fe	N	O	0	0
			43	34	1	4	4		

- Molecule 5 is THIOCYANATE ION (three-letter code: SCN) (formula: CNS).

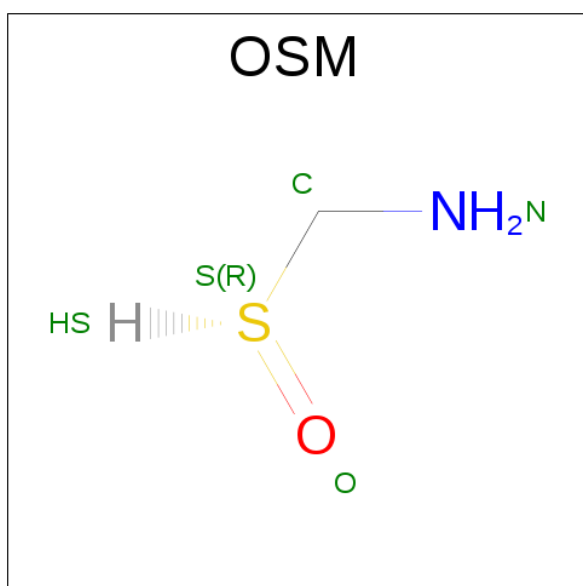


Mol	Chain	Residues	Atoms				ZeroOcc	AltConf
5	A	1	Total	C	N	S	0	0
			3	1	1	1		

- Molecule 6 is IODIDE ION (three-letter code: IOD) (formula: I).

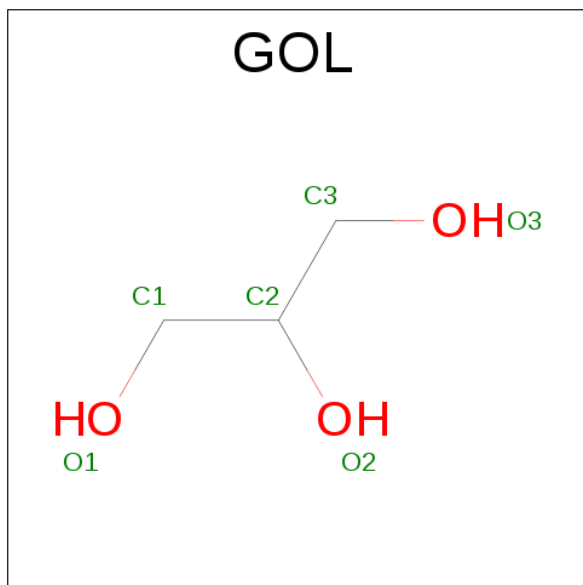
Mol	Chain	Residues	Atoms		ZeroOcc	AltConf
6	A	18	Total	I	0	0
			18	18		

- Molecule 7 is 1-(OXIDOSULFANYL)METHANAMINE (three-letter code: OSM) (formula: CH₅NOS).



Mol	Chain	Residues	Atoms					ZeroOcc	AltConf
7	A	1	Total	C	N	O	S	0	0
			4	1	1	1	1		
7	A	1	Total	C	N	O	S	0	0
			4	1	1	1	1		

- Molecule 8 is GLYCEROL (three-letter code: GOL) (formula: C₃H₈O₃).



Mol	Chain	Residues	Atoms			ZeroOcc	AltConf
8	A	1	Total	C	O	0	0
			6	3	3		

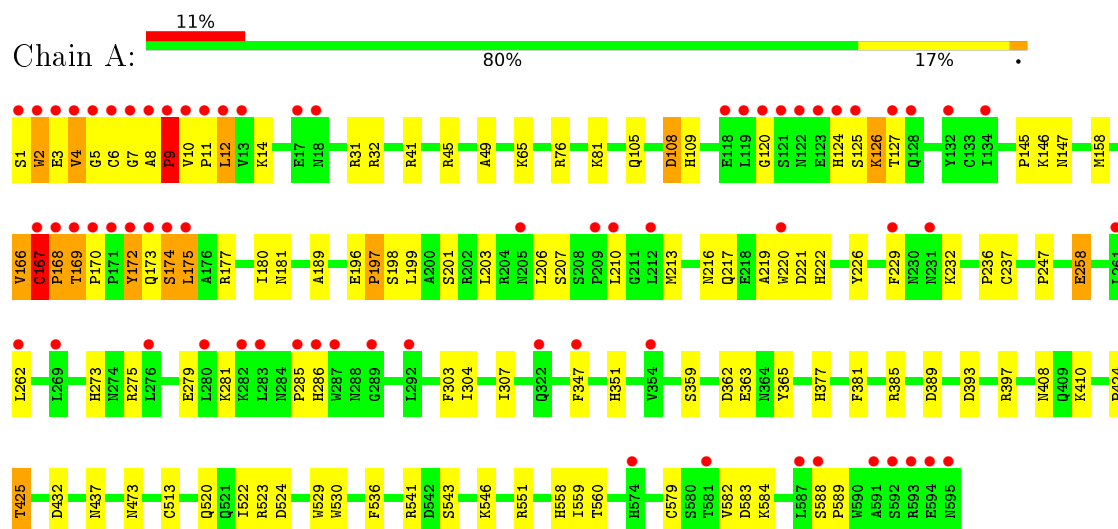
- Molecule 9 is water.

Mol	Chain	Residues	Atoms		ZeroOcc	AltConf
9	A	346	Total	O	0	0
			346	346		

3 Residue-property plots [i](#)

These plots are drawn for all protein, RNA and DNA chains in the entry. The first graphic for a chain summarises the proportions of errors displayed in the second graphic. The second graphic shows the sequence view annotated by issues in geometry and electron density. Residues are color-coded according to the number of geometric quality criteria for which they contain at least one outlier: green = 0, yellow = 1, orange = 2 and red = 3 or more. A red dot above a residue indicates a poor fit to the electron density ($RSRZ > 2$). Stretches of 2 or more consecutive residues without any outlier are shown as a green connector. Residues present in the sample, but not in the model, are shown in grey.

- Molecule 1: Lactoperoxidase



4 Data and refinement statistics

Property	Value	Source
Space group	P 1 21 1	Depositor
Cell constants a, b, c, α , β , γ	54.01Å 79.83Å 76.13Å 90.00° 102.30° 90.00°	Depositor
Resolution (Å)	50.00 – 1.93 37.19 – 1.93	Depositor EDS
% Data completeness (in resolution range)	100.0 (50.00-1.93) 100.0 (37.19-1.93)	Depositor EDS
R_{merge}	(Not available)	Depositor
R_{sym}	0.08	Depositor
$\langle I/\sigma(I) \rangle$ ¹	2.48 (at 1.94Å)	Xtriage
Refinement program	REFMAC 5.8.0135	Depositor
R, R_{free}	0.192 , 0.245 0.204 , 0.252	Depositor DCC
R_{free} test set	2406 reflections (5.33%)	DCC
Wilson B-factor (Å ²)	26.4	Xtriage
Anisotropy	0.622	Xtriage
Bulk solvent k_{sol} (e/Å ³), B_{sol} (Å ²)	0.30 , 44.0	EDS
L-test for twinning ²	$\langle L \rangle = 0.50$, $\langle L^2 \rangle = 0.33$	Xtriage
Estimated twinning fraction	No twinning to report.	Xtriage
F_o, F_c correlation	0.95	EDS
Total number of atoms	5270	wwPDB-VP
Average B, all atoms (Å ²)	40.0	wwPDB-VP

Xtriage's analysis on translational NCS is as follows: *The largest off-origin peak in the Patterson function is 5.68% of the height of the origin peak. No significant pseudotranslation is detected.*

¹Intensities estimated from amplitudes.

²Theoretical values of $\langle |L| \rangle$, $\langle L^2 \rangle$ for acentric reflections are 0.5, 0.333 respectively for untwinned datasets, and 0.375, 0.2 for perfectly twinned datasets.

5 Model quality

5.1 Standard geometry

Bond lengths and bond angles in the following residue types are not validated in this section: GOL, SCN, NAG, SEP, CA, OSM, HEM, IOD

The Z score for a bond length (or angle) is the number of standard deviations the observed value is removed from the expected value. A bond length (or angle) with $|Z| > 5$ is considered an outlier worth inspection. RMSZ is the root-mean-square of all Z scores of the bond lengths (or angles).

Mol	Chain	Bond lengths		Bond angles	
		RMSZ	$\# Z > 5$	RMSZ	$\# Z > 5$
1	A	0.89	3/4896 (0.1%)	0.95	9/6638 (0.1%)

Chiral center outliers are detected by calculating the chiral volume of a chiral center and verifying if the center is modelled as a planar moiety or with the opposite hand. A planarity outlier is detected by checking planarity of atoms in a peptide group, atoms in a mainchain group or atoms of a sidechain that are expected to be planar.

Mol	Chain	#Chirality outliers	#Planarity outliers
1	A	0	3

All (3) bond length outliers are listed below:

Mol	Chain	Res	Type	Atoms	Z	Observed(Å)	Ideal(Å)
1	A	168	PRO	N-CD	5.78	1.55	1.47
1	A	108	ASP	CB-CG	-5.15	1.41	1.51
1	A	9	PRO	N-CD	5.12	1.55	1.47

All (9) bond angle outliers are listed below:

Mol	Chain	Res	Type	Atoms	Z	Observed(°)	Ideal(°)
1	A	258[A]	GLU	CA-CB-CG	9.24	133.73	113.40
1	A	258[B]	GLU	CA-CB-CG	9.24	133.73	113.40
1	A	177	ARG	NE-CZ-NH2	-8.44	116.08	120.30
1	A	166	VAL	O-C-N	7.11	134.08	122.70
1	A	8	ALA	C-N-CD	5.52	140.00	128.40
1	A	168	PRO	CA-N-CD	-5.41	103.93	111.50
1	A	76	ARG	NE-CZ-NH1	5.35	122.97	120.30
1	A	362	ASP	CB-CG-OD1	5.11	122.89	118.30
1	A	524	ASP	CB-CG-OD1	5.09	122.88	118.30

There are no chirality outliers.

All (3) planarity outliers are listed below:

Mol	Chain	Res	Type	Group
1	A	167	CYS	Peptide
1	A	4	VAL	Peptide
1	A	5	GLY	Peptide

5.2 Too-close contacts

In the following table, the Non-H and H(model) columns list the number of non-hydrogen atoms and hydrogen atoms in the chain respectively. The H(added) column lists the number of hydrogen atoms added and optimized by MolProbity. The Clashes column lists the number of clashes within the asymmetric unit, whereas Symm-Clashes lists symmetry related clashes.

Mol	Chain	Non-H	H(model)	H(added)	Clashes	Symm-Clashes
1	A	4775	0	4693	125	0
2	A	70	0	64	0	0
3	A	1	0	0	0	0
4	A	43	0	30	12	0
5	A	3	0	0	0	0
6	A	18	0	0	27	0
7	A	8	0	10	8	0
8	A	6	0	8	1	0
9	A	346	0	0	11	0
All	All	5270	0	4805	140	0

The all-atom clashscore is defined as the number of clashes found per 1000 atoms (including hydrogen atoms). The all-atom clashscore for this structure is 14.

All (140) close contacts within the same asymmetric unit are listed below, sorted by their clash magnitude.

Atom-1	Atom-2	Interatomic distance (Å)	Clash overlap (Å)
6:A:716:IOD:I	6:A:720:IOD:I	1.62	1.62
6:A:721:IOD:I	6:A:722:IOD:I	1.46	1.46
1:A:108:ASP:OD2	4:A:707:HEM:CMD	1.74	1.35
1:A:258[A]:GLU:OE2	4:A:707:HEM:CMB	1.77	1.31
1:A:2:TRP:HB3	1:A:4:VAL:CG1	1.60	1.31
6:A:724:IOD:I	6:A:725:IOD:I	1.30	1.30
6:A:710:IOD:I	6:A:711:IOD:I	1.30	1.30
1:A:258[A]:GLU:OE2	4:A:707:HEM:HMB1	1.19	1.26
1:A:2:TRP:CB	1:A:4:VAL:HG12	1.83	1.08

Continued on next page...

Continued from previous page...

Atom-1	Atom-2	Interatomic distance (Å)	Clash overlap (Å)
1:A:172:TYR:HB2	1:A:173:GLN:HB2	1.02	1.02
1:A:258[B]:GLU:OE2	9:A:801:HOH:O	1.78	1.01
1:A:108:ASP:OD2	4:A:707:HEM:HMD1	0.80	0.98
1:A:172:TYR:CB	1:A:173:GLN:HB2	1.96	0.95
6:A:713:IOD:I	6:A:714:IOD:I	0.94	0.94
1:A:172:TYR:HB2	1:A:173:GLN:CB	1.96	0.94
1:A:2:TRP:HB3	1:A:4:VAL:HG12	0.95	0.93
1:A:169:THR:HB	1:A:170:PRO:HD3	1.49	0.92
1:A:108:ASP:CG	4:A:707:HEM:HMD1	1.90	0.91
1:A:166:VAL:O	1:A:167:CYS:HB2	1.71	0.90
6:A:720:IOD:I	9:A:1120:HOH:O	2.62	0.88
1:A:120:GLY:O	1:A:126:LYS:HD2	1.75	0.87
1:A:173:GLN:O	1:A:174:SER:OG	1.92	0.86
1:A:109:HIS:NE2	6:A:709:IOD:I	2.79	0.85
1:A:10:VAL:CG1	1:A:11:PRO:HD2	2.08	0.84
6:A:713:IOD:I	9:A:1138:HOH:O	2.65	0.83
1:A:10:VAL:HG12	1:A:11:PRO:HD2	1.60	0.81
6:A:719:IOD:I	9:A:937:HOH:O	2.70	0.80
1:A:9:PRO:CB	1:A:10:VAL:HA	2.13	0.79
6:A:709:IOD:I	9:A:801:HOH:O	2.69	0.79
1:A:258[A]:GLU:OE2	4:A:707:HEM:HMB2	1.81	0.79
1:A:258[B]:GLU:OE2	6:A:709:IOD:I	2.72	0.78
1:A:551:ARG:HD3	1:A:584:LYS:HA	1.66	0.77
1:A:2:TRP:CB	1:A:4:VAL:CG1	2.51	0.76
1:A:9:PRO:HD3	1:A:168:PRO:HD3	1.67	0.75
1:A:169:THR:HB	1:A:170:PRO:CD	2.17	0.72
1:A:189:ALA:HB2	1:A:304:ILE:HD12	1.71	0.71
1:A:126:LYS:HE3	1:A:127:THR:OG1	1.92	0.70
1:A:31:ARG:HD2	6:A:716:IOD:I	2.63	0.69
1:A:559:ILE:HA	7:A:727:OSM:O	1.93	0.69
1:A:169:THR:CB	1:A:170:PRO:HD3	2.21	0.68
1:A:351:HIS:HD1	1:A:437:ASN:HD21	1.40	0.68
1:A:9:PRO:HB3	1:A:10:VAL:HA	1.77	0.66
1:A:258[A]:GLU:HG2	9:A:1004:HOH:O	1.94	0.66
1:A:559:ILE:HG23	7:A:727:OSM:H2	1.78	0.65
1:A:258[B]:GLU:CD	9:A:801:HOH:O	2.24	0.65
1:A:124:HIS:O	1:A:127:THR:N	2.29	0.64
1:A:10:VAL:O	1:A:12:LEU:N	2.30	0.64
1:A:10:VAL:HG12	1:A:11:PRO:CD	2.29	0.63
1:A:2:TRP:C	1:A:4:VAL:H	2.02	0.63
1:A:172:TYR:HD2	1:A:172:TYR:H	1.48	0.61

Continued on next page...

Continued from previous page...

Atom-1	Atom-2	Interatomic distance (Å)	Clash overlap (Å)
1:A:410:LYS:HE2	1:A:473:ASN:HD21	1.66	0.60
1:A:10:VAL:HG13	1:A:11:PRO:HD2	1.83	0.60
1:A:258[B]:GLU:HG2	1:A:262:LEU:HD23	1.84	0.60
1:A:530:TRP:NE1	6:A:710:IOD:I	3.04	0.59
1:A:2:TRP:HB3	1:A:4:VAL:CB	2.33	0.58
1:A:175:LEU:HD12	9:A:830:HOH:O	2.03	0.58
1:A:410:LYS:CE	1:A:473:ASN:HD21	2.17	0.57
1:A:216:ASN:HA	7:A:728:OSM:HN2	1.69	0.57
1:A:213:MET:HG2	1:A:273:HIS:CD2	2.40	0.56
1:A:169:THR:CB	1:A:170:PRO:CD	2.82	0.55
1:A:303:PHE:CZ	1:A:307:ILE:CD1	2.89	0.55
4:A:707:HEM:HMC1	4:A:707:HEM:HBC2	1.87	0.55
1:A:229:PHE:CD1	1:A:247:PRO:HG2	2.41	0.55
1:A:10:VAL:O	1:A:11:PRO:C	2.44	0.55
1:A:281:LYS:HD3	1:A:285:PRO:HA	1.87	0.55
1:A:166:VAL:HA	1:A:168:PRO:HB3	1.89	0.55
1:A:258[A]:GLU:OE2	4:A:707:HEM:C2B	2.59	0.55
1:A:2:TRP:C	1:A:4:VAL:N	2.60	0.54
1:A:424:PRO:O	1:A:425:THR:HB	2.08	0.54
1:A:303:PHE:CZ	1:A:307:ILE:HD13	2.43	0.54
1:A:210:LEU:CD2	1:A:281:LYS:HG3	2.37	0.53
1:A:221:ASP:HB2	1:A:226:TYR:CZ	2.43	0.53
1:A:1:SER:O	1:A:2:TRP:C	2.44	0.53
1:A:108:ASP:CG	4:A:707:HEM:CMD	2.62	0.53
1:A:258[B]:GLU:OE1	9:A:801:HOH:O	2.17	0.53
6:A:712:IOD:I	6:A:715:IOD:I	0.52	0.52
4:A:707:HEM:HMB2	4:A:707:HEM:HBB2	1.91	0.52
1:A:31:ARG:CD	6:A:716:IOD:I	3.28	0.51
1:A:2:TRP:O	1:A:4:VAL:HG12	2.10	0.51
1:A:229:PHE:HB2	7:A:728:OSM:S	2.51	0.51
1:A:551:ARG:HD3	1:A:583:ASP:O	2.11	0.50
1:A:377:HIS:CD2	6:A:723:IOD:I	3.34	0.50
1:A:560:THR:HA	1:A:579:CYS:SG	2.52	0.50
1:A:172:TYR:HD2	1:A:172:TYR:N	2.09	0.50
1:A:172:TYR:N	1:A:172:TYR:CD2	2.79	0.49
1:A:236:PRO:HA	6:A:724:IOD:I	2.82	0.49
1:A:120:GLY:CA	1:A:126:LYS:HB3	2.42	0.49
1:A:10:VAL:CG1	1:A:11:PRO:CD	2.85	0.49
1:A:145:PRO:HG2	6:A:714:IOD:I	2.83	0.49
1:A:196:GLU:HG2	1:A:198:SEP:O1P	2.13	0.49
1:A:216:ASN:HA	7:A:728:OSM:N	2.28	0.49

Continued on next page...

Continued from previous page...

Atom-1	Atom-2	Interatomic distance (Å)	Clash overlap (Å)
6:A:716:IOD:I	9:A:926:HOH:O	2.90	0.49
1:A:425:THR:N	6:A:725:IOD:I	3.11	0.48
1:A:543:SER:O	1:A:546:LYS:HB2	2.14	0.48
1:A:124:HIS:O	1:A:126:LYS:N	2.47	0.48
1:A:237:CYS:HA	1:A:381:PHE:O	2.14	0.47
1:A:197:PRO:HG3	6:A:718:IOD:I	2.85	0.47
1:A:523:ARG:HG3	1:A:529:TRP:CE2	2.50	0.47
1:A:229:PHE:HD2	7:A:728:OSM:HS	1.63	0.47
1:A:11:PRO:O	1:A:11:PRO:HG2	2.15	0.46
1:A:551:ARG:NH1	1:A:582:VAL:O	2.46	0.46
1:A:2:TRP:HB3	1:A:4:VAL:HG11	1.82	0.46
1:A:536:PHE:O	1:A:541:ARG:NH1	2.48	0.46
1:A:377:HIS:NE2	6:A:723:IOD:I	3.18	0.46
1:A:9:PRO:CB	1:A:10:VAL:CA	2.85	0.45
1:A:180:ILE:HG22	1:A:181:ASN:N	2.31	0.45
1:A:303:PHE:CE1	1:A:307:ILE:CD1	3.00	0.45
1:A:222:HIS:HB2	1:A:558:HIS:NE2	2.32	0.45
1:A:281:LYS:CD	1:A:285:PRO:HA	2.47	0.44
4:A:707:HEM:C4A	6:A:709:IOD:I	3.39	0.44
1:A:217:GLN:H	7:A:728:OSM:HN2	1.62	0.44
1:A:2:TRP:O	1:A:4:VAL:N	2.39	0.44
1:A:551:ARG:CD	1:A:583:ASP:O	2.66	0.44
1:A:365:TYR:CE2	1:A:397:ARG:HB3	2.52	0.44
1:A:9:PRO:CD	1:A:168:PRO:HD3	2.44	0.43
1:A:303:PHE:CE1	1:A:307:ILE:HD11	2.54	0.43
1:A:81:LYS:HE3	6:A:713:IOD:I	2.89	0.43
1:A:124:HIS:C	1:A:126:LYS:N	2.72	0.42
1:A:385:ARG:O	1:A:389:ASP:HB3	2.19	0.42
1:A:206:LEU:O	1:A:207:SER:C	2.57	0.42
1:A:363:GLU:HA	7:A:727:OSM:HS	1.84	0.42
4:A:707:HEM:C1A	6:A:709:IOD:I	3.41	0.42
1:A:158:MET:HE1	1:A:432:ASP:H	1.84	0.42
1:A:6:CYS:SG	1:A:7:GLY:CA	3.08	0.42
1:A:258[B]:GLU:HG2	1:A:262:LEU:CD2	2.47	0.42
1:A:146:LYS:O	1:A:147:ASN:HB2	2.20	0.41
1:A:275:ARG:O	1:A:279:GLU:HB2	2.19	0.41
1:A:219:ALA:C	1:A:220:TRP:CD1	2.93	0.41
1:A:45:ARG:CZ	1:A:49:ALA:HB2	2.50	0.41
1:A:10:VAL:HB	1:A:41:ARG:CZ	2.51	0.41
1:A:393:ASP:O	1:A:397:ARG:HG3	2.21	0.41
1:A:105:GLN:NE2	6:A:709:IOD:I	3.11	0.41

Continued on next page...

Continued from previous page...

Atom-1	Atom-2	Interatomic distance (Å)	Clash overlap (Å)
1:A:359:SER:OG	6:A:719:IOD:I	2.97	0.41
1:A:126:LYS:HG2	1:A:127:THR:N	2.36	0.41
1:A:232:LYS:O	1:A:232:LYS:CG	2.68	0.41
1:A:408:ASN:HB2	9:A:925:HOH:O	2.20	0.41
1:A:2:TRP:C	1:A:4:VAL:HG12	2.40	0.40
1:A:199:LEU:N	8:A:729:GOL:H2	2.37	0.40
1:A:168:PRO:O	1:A:169:THR:CB	2.70	0.40
1:A:588:SER:HB2	1:A:589:PRO:HD3	2.04	0.40

There are no symmetry-related clashes.

5.3 Torsion angles [i](#)

5.3.1 Protein backbone [i](#)

In the following table, the Percentiles column shows the percent Ramachandran outliers of the chain as a percentile score with respect to all X-ray entries followed by that with respect to entries of similar resolution.

The Analysed column shows the number of residues for which the backbone conformation was analysed, and the total number of residues.

Mol	Chain	Analysed	Favoured	Allowed	Outliers	Percentiles	
1	A	593/595 (100%)	557 (94%)	31 (5%)	5 (1%)	24	10

All (5) Ramachandran outliers are listed below:

Mol	Chain	Res	Type
1	A	167	CYS
1	A	169	THR
1	A	174	SER
1	A	125	SER
1	A	9	PRO

5.3.2 Protein sidechains [i](#)

In the following table, the Percentiles column shows the percent sidechain outliers of the chain as a percentile score with respect to all X-ray entries followed by that with respect to entries of similar resolution.

The Analysed column shows the number of residues for which the sidechain conformation was

analysed, and the total number of residues.

Mol	Chain	Analysed	Rotameric	Outliers	Percentiles
1	A	518/517 (100%)	500 (96%)	18 (4%)	43 28

All (18) residues with a non-rotameric sidechain are listed below:

Mol	Chain	Res	Type
1	A	2	TRP
1	A	3	GLU
1	A	12	LEU
1	A	14	LYS
1	A	32	ARG
1	A	65	LYS
1	A	126	LYS
1	A	172	TYR
1	A	175	LEU
1	A	197	PRO
1	A	201	SER
1	A	203	LEU
1	A	286	HIS
1	A	347	PHE
1	A	425	THR
1	A	513	CYS
1	A	520	GLN
1	A	522	ILE

Some sidechains can be flipped to improve hydrogen bonding and reduce clashes. There are no such sidechains identified.

5.3.3 RNA ⓘ

There are no RNA molecules in this entry.

5.4 Non-standard residues in protein, DNA, RNA chains ⓘ

1 non-standard protein/DNA/RNA residue is modelled in this entry.

In the following table, the Counts columns list the number of bonds (or angles) for which Mogul statistics could be retrieved, the number of bonds (or angles) that are observed in the model and the number of bonds (or angles) that are defined in the chemical component dictionary. The Link column lists molecule types, if any, to which the group is linked. The Z score for a bond length (or angle) is the number of standard deviations the observed value is removed from the expected

value. A bond length (or angle) with $|Z| > 2$ is considered an outlier worth inspection. RMSZ is the root-mean-square of all Z scores of the bond lengths (or angles).

Mol	Type	Chain	Res	Link	Bond lengths			Bond angles		
					Counts	RMSZ	$\# Z > 2$	Counts	RMSZ	$\# Z > 2$
1	SEP	A	198	1	7,9,10	1.90	2 (28%)	8,12,14	3.95	5 (62%)

In the following table, the Chirals column lists the number of chiral outliers, the number of chiral centers analysed, the number of these observed in the model and the number defined in the chemical component dictionary. Similar counts are reported in the Torsion and Rings columns. '-' means no outliers of that kind were identified.

Mol	Type	Chain	Res	Link	Chirals	Torsions	Rings
1	SEP	A	198	1	-	0/5/8/10	0/0/0/0

All (2) bond length outliers are listed below:

Mol	Chain	Res	Type	Atoms	Z	Observed(Å)	Ideal(Å)
1	A	198	SEP	P-O2P	-2.78	1.45	1.54
1	A	198	SEP	P-OG	2.94	1.68	1.59

All (5) bond angle outliers are listed below:

Mol	Chain	Res	Type	Atoms	Z	Observed(°)	Ideal(°)
1	A	198	SEP	OG-P-O1P	-5.92	92.20	107.08
1	A	198	SEP	O3P-P-O2P	-3.08	96.14	107.44
1	A	198	SEP	O3P-P-O1P	4.38	124.92	110.63
1	A	198	SEP	O2P-P-OG	4.85	120.87	106.72
1	A	198	SEP	OG-CB-CA	5.74	113.26	108.26

There are no chirality outliers.

There are no torsion outliers.

There are no ring outliers.

1 monomer is involved in 1 short contact:

Mol	Chain	Res	Type	Clashes	Symm-Clashes
1	A	198	SEP	1	0

5.5 Carbohydrates ⓘ

There are no carbohydrates in this entry.

5.6 Ligand geometry

Of 29 ligands modelled in this entry, 19 are monoatomic - leaving 10 for Mogul analysis.

In the following table, the Counts columns list the number of bonds (or angles) for which Mogul statistics could be retrieved, the number of bonds (or angles) that are observed in the model and the number of bonds (or angles) that are defined in the chemical component dictionary. The Link column lists molecule types, if any, to which the group is linked. The Z score for a bond length (or angle) is the number of standard deviations the observed value is removed from the expected value. A bond length (or angle) with $|Z| > 2$ is considered an outlier worth inspection. RMSZ is the root-mean-square of all Z scores of the bond lengths (or angles).

Mol	Type	Chain	Res	Link	Bond lengths			Bond angles		
					Counts	RMSZ	# $ Z > 2$	Counts	RMSZ	# $ Z > 2$
2	NAG	A	701	1	14,14,15	0.73	0	15,19,21	1.21	2 (13%)
2	NAG	A	702	1	14,14,15	0.57	0	15,19,21	1.24	1 (6%)
2	NAG	A	703	1,2	14,14,15	0.62	0	15,19,21	1.95	3 (20%)
2	NAG	A	704	2	14,14,15	0.81	0	15,19,21	2.41	3 (20%)
2	NAG	A	705	1	14,14,15	0.56	0	15,19,21	0.89	1 (6%)
4	HEM	A	707	1	24,50,50	1.45	6 (25%)	16,82,82	2.03	4 (25%)
5	SCN	A	708	-	2,2,2	0.03	0	1,1,1	0.19	0
7	OSM	A	727	-	1,3,3	0.47	0	0,2,2	0.00	-
7	OSM	A	728	-	1,3,3	0.46	0	0,2,2	0.00	-
8	GOL	A	729	-	5,5,5	0.21	0	5,5,5	0.22	0

In the following table, the Chirals column lists the number of chiral outliers, the number of chiral centers analysed, the number of these observed in the model and the number defined in the chemical component dictionary. Similar counts are reported in the Torsion and Rings columns. '-' means no outliers of that kind were identified.

Mol	Type	Chain	Res	Link	Chirals	Torsions	Rings
2	NAG	A	701	1	-	0/6/23/26	0/1/1/1
2	NAG	A	702	1	-	0/6/23/26	0/1/1/1
2	NAG	A	703	1,2	-	0/6/23/26	0/1/1/1
2	NAG	A	704	2	-	0/6/23/26	0/1/1/1
2	NAG	A	705	1	-	0/6/23/26	0/1/1/1
4	HEM	A	707	1	-	0/6/54/54	0/0/8/8
5	SCN	A	708	-	-	0/0/0/0	0/0/0/0
7	OSM	A	727	-	-	0/0/1/1	0/0/0/0
7	OSM	A	728	-	-	0/0/1/1	0/0/0/0
8	GOL	A	729	-	-	0/4/4/4	0/0/0/0

All (6) bond length outliers are listed below:

Mol	Chain	Res	Type	Atoms	Z	Observed(Å)	Ideal(Å)
4	A	707	HEM	C4C-NC	-3.05	1.32	1.36
4	A	707	HEM	CMD-C2D	-2.27	1.47	1.51
4	A	707	HEM	C3B-C2B	-2.17	1.37	1.40
4	A	707	HEM	C3D-C2D	-2.06	1.31	1.37
4	A	707	HEM	C4D-ND	-2.02	1.34	1.36
4	A	707	HEM	CMB-C2B	3.02	1.58	1.51

All (14) bond angle outliers are listed below:

Mol	Chain	Res	Type	Atoms	Z	Observed(°)	Ideal(°)
4	A	707	HEM	CBD-CAD-C3D	-4.82	104.01	112.47
2	A	703	NAG	O5-C5-C4	-4.56	102.59	110.13
2	A	703	NAG	C1-O5-C5	-3.58	106.87	112.14
4	A	707	HEM	CBA-CAA-C2A	-3.51	106.32	112.49
4	A	707	HEM	CAD-CBD-CGD	-3.43	106.12	112.78
2	A	704	NAG	C4-C3-C2	-3.31	106.20	111.34
2	A	701	NAG	O5-C5-C6	-2.06	102.92	107.34
4	A	707	HEM	CMC-C2C-C3C	2.13	129.25	125.09
2	A	705	NAG	O5-C5-C6	2.28	112.22	107.34
2	A	704	NAG	O5-C5-C4	2.52	114.31	110.13
2	A	701	NAG	C6-C5-C4	2.83	120.07	112.99
2	A	702	NAG	O4-C4-C5	3.02	117.18	109.23
2	A	703	NAG	C6-C5-C4	3.37	121.42	112.99
2	A	704	NAG	C1-O5-C5	7.32	122.90	112.14

There are no chirality outliers.

There are no torsion outliers.

There are no ring outliers.

4 monomers are involved in 21 short contacts:

Mol	Chain	Res	Type	Clashes	Symm-Clashes
4	A	707	HEM	12	0
7	A	727	OSM	3	0
7	A	728	OSM	5	0
8	A	729	GOL	1	0

5.7 Other polymers

There are no such residues in this entry.

5.8 Polymer linkage issues ⓘ

There are no chain breaks in this entry.

6 Fit of model and data ⓘ

6.1 Protein, DNA and RNA chains ⓘ

In the following table, the column labelled ‘#RSRZ> 2’ contains the number (and percentage) of RSRZ outliers, followed by percent RSRZ outliers for the chain as percentile scores relative to all X-ray entries and entries of similar resolution. The OWAB column contains the minimum, median, 95th percentile and maximum values of the occupancy-weighted average B-factor per residue. The column labelled ‘Q< 0.9’ lists the number of (and percentage) of residues with an average occupancy less than 0.9.

Mol	Chain	Analysed	<RSRZ>	#RSRZ>2	OWAB(Å ²)	Q<0.9
1	A	594/595 (99%)	0.75	67 (11%) 7 10	14, 34, 85, 162	0

All (67) RSRZ outliers are listed below:

Mol	Chain	Res	Type	RSRZ
1	A	2	TRP	28.8
1	A	173	GLN	20.1
1	A	172	TYR	18.3
1	A	1	SER	17.5
1	A	7	GLY	12.4
1	A	595	ASN	12.2
1	A	4	VAL	11.7
1	A	121	SER	11.0
1	A	5	GLY	9.3
1	A	174	SER	9.0
1	A	170	PRO	8.2
1	A	8	ALA	7.9
1	A	10	VAL	7.3
1	A	120	GLY	7.0
1	A	593	ARG	7.0
1	A	169	THR	6.1
1	A	12	LEU	6.0
1	A	9	PRO	5.9
1	A	6	CYS	5.5
1	A	122	ASN	5.3
1	A	220	TRP	5.0
1	A	124	HIS	4.8
1	A	280	LEU	4.6
1	A	3	GLU	4.6
1	A	125	SER	4.4
1	A	581	THR	4.3
1	A	13	VAL	4.3

Continued on next page...

Continued from previous page...

Mol	Chain	Res	Type	RSRZ
1	A	287	TRP	4.1
1	A	231	ASN	4.1
1	A	167	CYS	3.8
1	A	119	LEU	3.8
1	A	209	PRO	3.7
1	A	123	GLU	3.7
1	A	175	LEU	3.6
1	A	594	GLU	3.6
1	A	118	GLU	3.5
1	A	283	LEU	3.5
1	A	285	PRO	3.3
1	A	171	PRO	3.3
1	A	282	LYS	3.2
1	A	11	PRO	3.2
1	A	134	ILE	3.2
1	A	132	TYR	3.1
1	A	168	PRO	3.1
1	A	292	LEU	2.9
1	A	588	SER	2.9
1	A	276	LEU	2.7
1	A	289	GLY	2.7
1	A	587	LEU	2.6
1	A	286	HIS	2.5
1	A	574	HIS	2.5
1	A	262	LEU	2.4
1	A	128	GLN	2.4
1	A	591	ALA	2.4
1	A	229	PHE	2.4
1	A	127	THR	2.3
1	A	592	SER	2.3
1	A	269	LEU	2.3
1	A	18	ASN	2.2
1	A	212	LEU	2.2
1	A	210	LEU	2.2
1	A	205	ASN	2.1
1	A	17	GLU	2.1
1	A	347	PHE	2.1
1	A	354	VAL	2.1
1	A	261	LEU	2.1
1	A	322	GLN	2.0

6.2 Non-standard residues in protein, DNA, RNA chains [i](#)

In the following table, the Atoms column lists the number of modelled atoms in the group and the number defined in the chemical component dictionary. LLDF column lists the quality of electron density of the group with respect to its neighbouring residues in protein, DNA or RNA chains. The B-factors column lists the minimum, median, 95th percentile and maximum values of B factors of atoms in the group. The column labelled 'Q< 0.9' lists the number of atoms with occupancy less than 0.9.

Mol	Type	Chain	Res	Atoms	RSCC	RSR	LLDF	B-factors(Å ²)	Q<0.9
1	SEP	A	198	10/11	0.91	0.15	-	34,45,57,58	0

6.3 Carbohydrates [i](#)

There are no carbohydrates in this entry.

6.4 Ligands [i](#)

In the following table, the Atoms column lists the number of modelled atoms in the group and the number defined in the chemical component dictionary. LLDF column lists the quality of electron density of the group with respect to its neighbouring residues in protein, DNA or RNA chains. The B-factors column lists the minimum, median, 95th percentile and maximum values of B factors of atoms in the group. The column labelled 'Q< 0.9' lists the number of atoms with occupancy less than 0.9.

Mol	Type	Chain	Res	Atoms	RSCC	RSR	LLDF	B-factors(Å ²)	Q<0.9
7	OSM	A	727	4/4	0.85	0.24	2.35	16,19,26,27	0
8	GOL	A	729	6/6	0.74	0.21	2.17	19,23,29,31	0
2	NAG	A	702	14/15	0.65	0.22	1.23	54,72,75,78	0
4	HEM	A	707	43/43	0.96	0.17	0.67	16,20,25,30	0
2	NAG	A	703	14/15	0.93	0.12	-0.30	32,40,49,54	0
7	OSM	A	728	4/4	0.80	0.17	-0.47	20,23,36,36	0
6	IOD	A	717	1/1	0.95	0.09	-0.58	54,54,54,54	1
5	SCN	A	708	3/3	0.96	0.09	-0.79	31,31,32,45	0
6	IOD	A	722	1/1	0.99	0.06	-1.01	41,41,41,41	1
6	IOD	A	709	1/1	0.93	0.14	-1.33	66,66,66,66	1
6	IOD	A	714	1/1	1.00	0.04	-1.40	28,28,28,28	1
6	IOD	A	712	1/1	1.00	0.06	-1.44	20,20,20,20	1
6	IOD	A	713	1/1	1.00	0.04	-1.49	30,30,30,30	1
6	IOD	A	715	1/1	1.00	0.06	-1.56	18,18,18,18	1
6	IOD	A	726	1/1	0.92	0.06	-1.70	44,44,44,44	1
3	CA	A	706	1/1	0.99	0.07	-2.89	23,23,23,23	0
6	IOD	A	719	1/1	0.98	0.04	-3.17	50,50,50,50	1
6	IOD	A	724	1/1	1.00	0.02	-3.35	36,36,36,36	1

Continued on next page...

Continued from previous page...

Mol	Type	Chain	Res	Atoms	RSCC	RSR	LLDF	B-factors(\AA^2)	Q<0.9
6	IOD	A	710	1/1	0.99	0.03	-4.95	34,34,34,34	1
6	IOD	A	711	1/1	0.99	0.03	-5.11	35,35,35,35	1
6	IOD	A	725	1/1	0.99	0.02	-7.93	38,38,38,38	1
6	IOD	A	716	1/1	0.94	0.11	-	62,62,62,62	1
6	IOD	A	723	1/1	0.94	0.05	-	48,48,48,48	1
2	NAG	A	704	14/15	0.78	0.34	-	58,69,86,86	0
6	IOD	A	721	1/1	0.99	0.03	-	37,37,37,37	1
2	NAG	A	701	14/15	0.69	0.39	-	62,71,80,80	0
6	IOD	A	720	1/1	0.94	0.13	-	64,64,64,64	1
2	NAG	A	705	14/15	0.83	0.22	-	56,66,71,73	0
6	IOD	A	718	1/1	0.91	0.08	-	63,63,63,63	1

6.5 Other polymers [i](#)

There are no such residues in this entry.