



# Full wwPDB X-ray Structure Validation Report ⓘ

Feb 1, 2016 – 04:59 PM GMT

PDB ID : 4GUT  
Title : Crystal structure of LSD2-NPAC  
Authors : Chen, F.; Dong, Z.; Fang, J.; Yang, Y.; Li, Z.; Xu, Y.; Yang, H.; Wang, P.;  
Fang, R.; Shi, Y.; Xu, Y.  
Deposited on : 2012-08-29  
Resolution : 2.00 Å(reported)

This is a Full wwPDB X-ray Structure Validation Report for a publicly released PDB entry.  
We welcome your comments at [validation@mail.wwpdb.org](mailto:validation@mail.wwpdb.org)  
A user guide is available at  
<http://wwpdb.org/validation/2016/XrayValidationReportHelp>  
with specific help available everywhere you see the ⓘ symbol.

---

The following versions of software and data (see [references ⓘ](#)) were used in the production of this report:

MolProbity : 4.02b-467  
Mogul : 1.7 (RC4), CSD as536be (2015)  
Xtriage (Phenix) : 1.9-1692  
EDS : rb-20026688  
Percentile statistics : 20151230.v01 (using entries in the PDB archive December 30th 2015)  
Refmac : 5.8.0135  
CCP4 : 6.5.0  
Ideal geometry (proteins) : Engh & Huber (2001)  
Ideal geometry (DNA, RNA) : Parkinson et al. (1996)  
Validation Pipeline (wwPDB-VP) : trunk26865

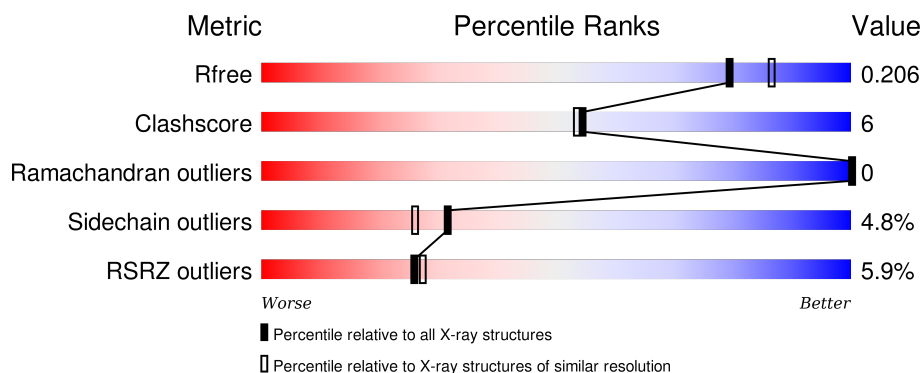
# 1 Overall quality at a glance

The following experimental techniques were used to determine the structure:

## *X-RAY DIFFRACTION*

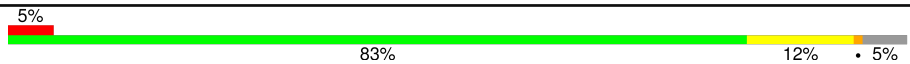
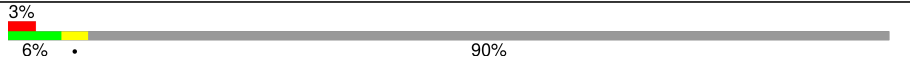
The reported resolution of this entry is 2.00 Å.

Percentile scores (ranging between 0-100) for global validation metrics of the entry are shown in the following graphic. The table shows the number of entries on which the scores are based.



Metric	Whole archive (#Entries)	Similar resolution (#Entries, resolution range(Å))
$R_{free}$	91344	6249 (2.00-2.00)
Clashscore	102246	7340 (2.00-2.00)
Ramachandran outliers	100387	7248 (2.00-2.00)
Sidechain outliers	100360	7247 (2.00-2.00)
RSRZ outliers	91569	6262 (2.00-2.00)

The table below summarises the geometric issues observed across the polymeric chains and their fit to the electron density. The red, orange, yellow and green segments on the lower bar indicate the fraction of residues that contain outliers for  $\geq 3$ , 2, 1 and 0 types of geometric quality criteria. A grey segment represents the fraction of residues that are not modelled. The numeric value for each fraction is indicated below the corresponding segment, with a dot representing fractions  $\leq 5\%$ . The upper red bar (where present) indicates the fraction of residues that have poor fit to the electron density. The numeric value is given above the bar.

Mol	Chain	Length	Quality of chain
1	A	776	 5% 83% 12% • 5%
2	B	124	 3% 6% • 90%

The following table lists non-polymeric compounds, carbohydrate monomers and non-standard residues in protein, DNA, RNA chains that are outliers for geometric or electron-density-fit criteria:

Mol	Type	Chain	Res	Chirality	Geometry	Clashes	Electron density
4	GOL	A	903	-	-	-	X
6	PGE	B	301	-	-	X	X

## 2 Entry composition

There are 7 unique types of molecules in this entry. The entry contains 6390 atoms, of which 0 are hydrogens and 0 are deuteriums.

In the tables below, the ZeroOcc column contains the number of atoms modelled with zero occupancy, the AltConf column contains the number of residues with at least one atom in alternate conformation and the Trace column contains the number of residues modelled with at most 2 atoms.

- Molecule 1 is a protein called Lysine-specific histone demethylase 1B.

Mol	Chain	Residues	Atoms					ZeroOcc	AltConf	Trace
			Total	C	N	O	S			
1	A	740	5861	3740	998	1081	42	0	2	0

There are 4 discrepancies between the modelled and reference sequences:

Chain	Residue	Modelled	Actual	Comment	Reference
A	47	PRO	-	EXPRESSION TAG	UNP Q8NB78
A	48	LEU	-	EXPRESSION TAG	UNP Q8NB78
A	49	GLY	-	EXPRESSION TAG	UNP Q8NB78
A	50	SER	-	EXPRESSION TAG	UNP Q8NB78

- Molecule 2 is a protein called Putative oxidoreductase GLYR1.

Mol	Chain	Residues	Atoms				ZeroOcc	AltConf	Trace
			Total	C	N	O			
2	B	12	105	69	19	17	0	0	0

There are 7 discrepancies between the modelled and reference sequences:

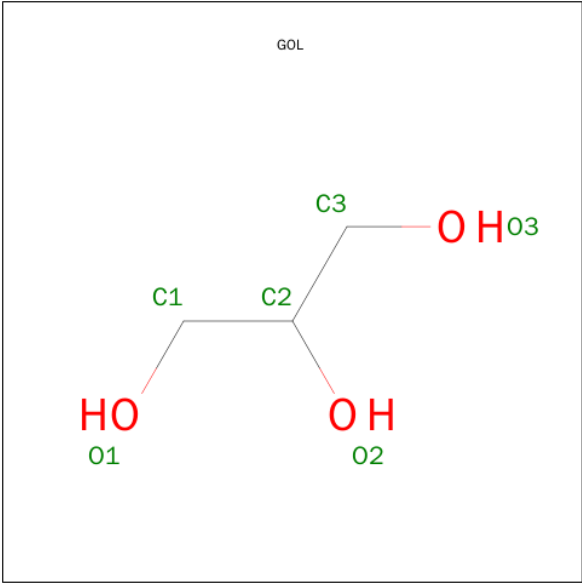
Chain	Residue	Modelled	Actual	Comment	Reference
B	145	PRO	-	EXPRESSION TAG	UNP Q49A26
B	146	LEU	-	EXPRESSION TAG	UNP Q49A26
B	147	GLY	-	EXPRESSION TAG	UNP Q49A26
B	148	SER	-	EXPRESSION TAG	UNP Q49A26
B	149	PRO	-	EXPRESSION TAG	UNP Q49A26
B	150	GLU	-	EXPRESSION TAG	UNP Q49A26
B	151	PHE	-	EXPRESSION TAG	UNP Q49A26

- Molecule 3 is FLAVIN-ADENINE DINUCLEOTIDE (three-letter code: FAD) (formula: C<sub>27</sub>H<sub>33</sub>N<sub>9</sub>O<sub>15</sub>P<sub>2</sub>).



Mol	Chain	Residues	Atoms					ZeroOcc	AltConf
3	A	1	Total	C	N	O	P	0	0
			53	27	9	15	2		

- Molecule 4 is GLYCEROL (three-letter code: GOL) (formula: C<sub>3</sub>H<sub>8</sub>O<sub>3</sub>).

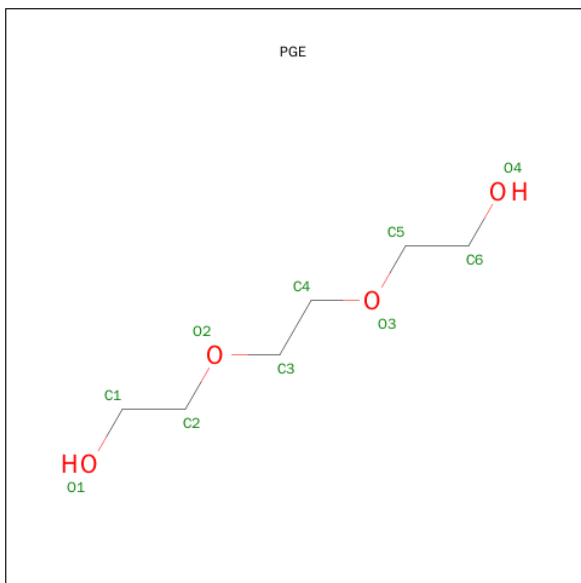


Mol	Chain	Residues	Atoms			ZeroOcc	AltConf
4	A	1	Total	C	O	0	0
			6	3	3		
4	A	1	Total	C	O	0	0
			6	3	3		

- Molecule 5 is ZINC ION (three-letter code: ZN) (formula: Zn).

Mol	Chain	Residues	Atoms		ZeroOcc	AltConf
5	A	3	Total	Zn	0	0
			3	3		

- Molecule 6 is TRIETHYLENE GLYCOL (three-letter code: PGE) (formula:  $C_6H_{14}O_4$ ).



Mol	Chain	Residues	Atoms			ZeroOcc	AltConf
6	B	1	Total	C	O	0	0
			10	6	4		

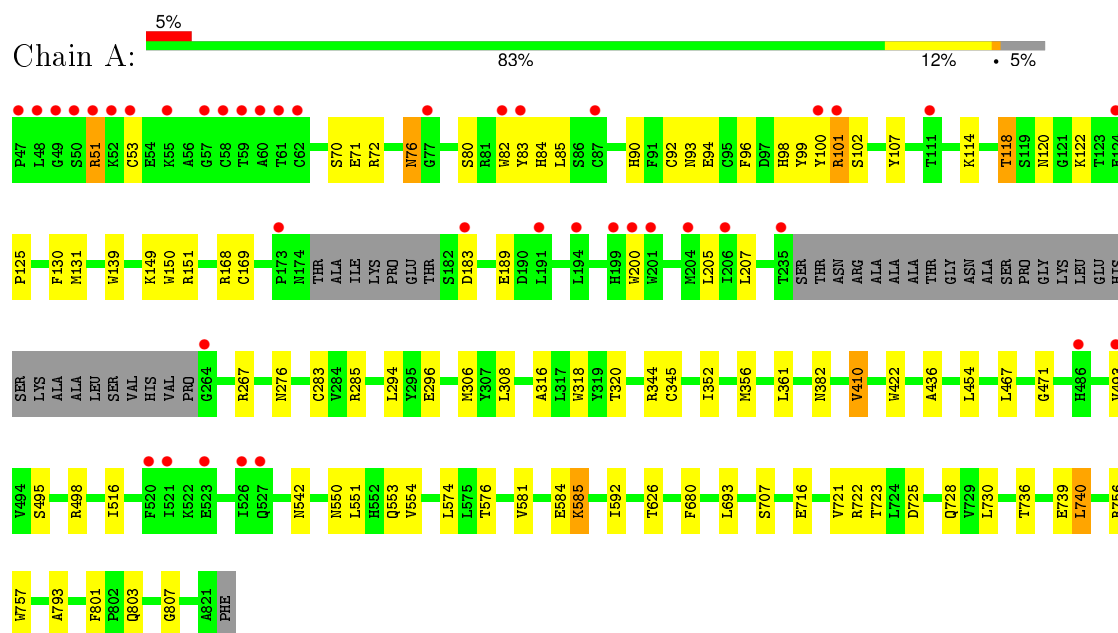
- Molecule 7 is water.

Mol	Chain	Residues	Atoms		ZeroOcc	AltConf
7	A	342	Total	O	0	0
			342	342		
7	B	4	Total	O	0	0
			4	4		

### 3 Residue-property plots

These plots are drawn for all protein, RNA and DNA chains in the entry. The first graphic for a chain summarises the proportions of errors displayed in the second graphic. The second graphic shows the sequence view annotated by issues in geometry and electron density. Residues are color-coded according to the number of geometric quality criteria for which they contain at least one outlier: green = 0, yellow = 1, orange = 2 and red = 3 or more. A red dot above a residue indicates a poor fit to the electron density ( $RSRZ > 2$ ). Stretches of 2 or more consecutive residues without any outlier are shown as a green connector. Residues present in the sample, but not in the model, are shown in grey.

- Molecule 1: Lysine-specific histone demethylase 1B



## 4 Data and refinement statistics

Property	Value	Source
Space group	P 1 21 1	Depositor
Cell constants a, b, c, $\alpha$ , $\beta$ , $\gamma$	62.00 Å 89.76 Å 86.69 Å 90.00° 104.96° 90.00°	Depositor
Resolution (Å)	35.92 – 2.00 47.54 – 2.00	Depositor EDS
% Data completeness (in resolution range)	90.2 (35.92-2.00) 95.1 (47.54-2.00)	Depositor EDS
$R_{merge}$	(Not available)	Depositor
$R_{sym}$	(Not available)	Depositor
$\langle I/\sigma(I) \rangle$ <sup>1</sup>	3.67 (at 2.00 Å)	Xtriage
Refinement program	PHENIX (phenix.refine: 1.6.1_353)	Depositor
R, $R_{free}$	0.196 , 0.207 0.197 , 0.206	Depositor DCC
$R_{free}$ test set	2995 reflections (5.33%)	DCC
Wilson B-factor (Å <sup>2</sup> )	28.2	Xtriage
Anisotropy	0.279	Xtriage
Bulk solvent $k_{sol}$ (e/Å <sup>3</sup> ), $B_{sol}$ (Å <sup>2</sup> )	0.35 , 47.9	EDS
Estimated twinning fraction	No twinning to report.	Xtriage
L-test for twinning <sup>2</sup>	$\langle  L  \rangle = 0.50$ , $\langle L^2 \rangle = 0.33$	Xtriage
Outliers	0 of 59223 reflections	Xtriage
$F_o, F_c$ correlation	0.96	EDS
Total number of atoms	6390	wwPDB-VP
Average B, all atoms (Å <sup>2</sup> )	39.0	wwPDB-VP

Xtriage's analysis on translational NCS is as follows: *The largest off-origin peak in the Patterson function is 4.90% of the height of the origin peak. No significant pseudotranslation is detected.*

<sup>1</sup>Intensities estimated from amplitudes.

<sup>2</sup>Theoretical values of  $\langle |L| \rangle$ ,  $\langle L^2 \rangle$  for acentric reflections are 0.5, 0.375 respectively for untwinned datasets, and 0.333, 0.2 for perfectly twinned datasets.



## 5 Model quality [i](#)

### 5.1 Standard geometry [i](#)

Bond lengths and bond angles in the following residue types are not validated in this section: GOL, ZN, PGE, FAD

The Z score for a bond length (or angle) is the number of standard deviations the observed value is removed from the expected value. A bond length (or angle) with  $|Z| > 5$  is considered an outlier worth inspection. RMSZ is the root-mean-square of all Z scores of the bond lengths (or angles).

Mol	Chain	Bond lengths		Bond angles	
		RMSZ	$\# Z  > 5$	RMSZ	$\# Z  > 5$
1	A	0.50	6/6016 (0.1%)	0.56	0/8149
2	B	0.70	0/110	0.51	0/149
All	All	0.50	6/6126 (0.1%)	0.56	0/8298

All (6) bond length outliers are listed below:

Mol	Chain	Res	Type	Atoms	Z	Observed(Å)	Ideal(Å)
1	A	150	TRP	CD2-CE2	5.33	1.47	1.41
1	A	318	TRP	CD2-CE2	5.31	1.47	1.41
1	A	139	TRP	CD2-CE2	5.25	1.47	1.41
1	A	200	TRP	CD2-CE2	5.19	1.47	1.41
1	A	82	TRP	CD2-CE2	5.16	1.47	1.41
1	A	757	TRP	CD2-CE2	5.15	1.47	1.41

There are no bond angle outliers.

There are no chirality outliers.

There are no planarity outliers.

### 5.2 Too-close contacts [i](#)

In the following table, the Non-H and H(model) columns list the number of non-hydrogen atoms and hydrogen atoms in the chain respectively. The H(added) column lists the number of hydrogen atoms added and optimized by MolProbity. The Clashes column lists the number of clashes within the asymmetric unit, whereas Symm-Clashes lists symmetry related clashes.

Mol	Chain	Non-H	H(model)	H(added)	Clashes	Symm-Clashes
1	A	5861	0	5777	53	0
2	B	105	0	91	24	0
3	A	53	0	29	2	0

*Continued on next page...*

*Continued from previous page...*

Mol	Chain	Non-H	H(model)	H(added)	Clashes	Symm-Clashes
4	A	12	0	16	3	0
5	A	3	0	0	0	0
6	B	10	0	14	25	0
7	A	342	0	0	1	0
7	B	4	0	0	0	0
All	All	6390	0	5927	77	0

The all-atom clashscore is defined as the number of clashes found per 1000 atoms (including hydrogen atoms). The all-atom clashscore for this structure is 6.

All (77) close contacts within the same asymmetric unit are listed below, sorted by their clash magnitude.

Atom-1	Atom-2	Interatomic distance (Å)	Clash overlap (Å)
2:B:217:PHE:CD1	6:B:301:PGE:C2	2.32	1.13
2:B:217:PHE:CD1	6:B:301:PGE:H2	1.83	1.11
2:B:217:PHE:HD1	6:B:301:PGE:H2	0.98	1.10
2:B:217:PHE:HD1	6:B:301:PGE:C2	1.71	1.03
2:B:217:PHE:CE1	6:B:301:PGE:C3	2.43	1.01
2:B:217:PHE:HB3	6:B:301:PGE:O1	1.63	0.99
2:B:217:PHE:HE1	6:B:301:PGE:C3	1.82	0.91
1:A:422:TRP:CZ3	4:A:903:GOL:H2	2.12	0.85
1:A:149:LYS:HD2	1:A:189:GLU:HB2	1.59	0.83
2:B:217:PHE:CD1	6:B:301:PGE:O2	2.32	0.83
1:A:454:LEU:HD21	1:A:585:LYS:HG3	1.60	0.82
1:A:422:TRP:HZ3	4:A:903:GOL:H2	1.44	0.81
2:B:217:PHE:HB3	6:B:301:PGE:C1	2.10	0.80
1:A:51:ARG:HH11	1:A:51:ARG:HG2	1.50	0.77
2:B:217:PHE:CE1	6:B:301:PGE:H32	2.20	0.75
1:A:352:ILE:O	1:A:356:MET:HG3	1.88	0.73
2:B:217:PHE:CE1	6:B:301:PGE:H3	2.24	0.72
2:B:217:PHE:HE1	6:B:301:PGE:H32	1.53	0.71
1:A:495:SER:HA	1:A:498:ARG:HG2	1.76	0.68
2:B:217:PHE:HE1	6:B:301:PGE:H3	1.56	0.67
2:B:217:PHE:CE1	6:B:301:PGE:O2	2.46	0.67
1:A:493:VAL:HG11	1:A:516:ILE:HG21	1.79	0.65
1:A:285:ARG:HD3	6:B:301:PGE:H1	1.79	0.64
1:A:498:ARG:HD2	7:A:1440:HOH:O	1.97	0.64
1:A:550:ASN:HB3	1:A:553:GLN:HE22	1.63	0.63
1:A:76:ASN:HD22	1:A:76:ASN:H	1.45	0.62
2:B:217:PHE:CD1	6:B:301:PGE:C3	2.83	0.61
2:B:217:PHE:CB	6:B:301:PGE:C1	2.79	0.61

*Continued on next page...*

*Continued from previous page...*

Atom-1	Atom-2	Interatomic distance (Å)	Clash overlap (Å)
1:A:725:ASP:H	1:A:728:GLN:HE21	1.49	0.60
1:A:53:CYS:SG	1:A:84:HIS:HB2	2.41	0.59
1:A:114:LYS:HG3	1:A:125:PRO:HB2	1.85	0.58
1:A:551:LEU:HA	1:A:554:VAL:HG13	1.86	0.57
1:A:285:ARG:HG2	6:B:301:PGE:O4	2.06	0.56
1:A:306:MET:HE3	1:A:345:CYS:HA	1.89	0.55
1:A:756:ARG:N	4:A:903:GOL:O1	2.30	0.54
1:A:99:TYR:CE2	1:A:131:MET:HE1	2.44	0.53
2:B:217:PHE:CB	6:B:301:PGE:H12	2.39	0.52
2:B:217:PHE:CG	6:B:301:PGE:H12	2.44	0.52
1:A:70:SER:HB2	1:A:98:HIS:HB2	1.90	0.52
1:A:722:ARG:HG3	1:A:723:THR:HG23	1.92	0.52
1:A:550:ASN:HD22	1:A:716:GLU:HG3	1.75	0.52
2:B:217:PHE:CD1	6:B:301:PGE:C1	2.92	0.52
2:B:214:ASP:HB2	2:B:216:HIS:HD2	1.74	0.51
1:A:51:ARG:NH1	1:A:51:ARG:HG2	2.24	0.51
1:A:205:LEU:CD1	1:A:207:LEU:O	2.60	0.50
1:A:471:GLY:HA2	1:A:739:GLU:O	2.12	0.49
1:A:72:ARG:O	1:A:94:GLU:HG3	2.12	0.48
1:A:725:ASP:H	1:A:728:GLN:NE2	2.09	0.48
1:A:584[B]:GLU:HG2	1:A:585:LYS:N	2.29	0.47
1:A:316:ALA:O	1:A:320:THR:HG23	2.15	0.46
1:A:736:THR:HG22	1:A:740:LEU:HD22	1.98	0.46
1:A:493:VAL:CG1	1:A:516:ILE:HG21	2.45	0.46
1:A:93:ASN:O	1:A:96:PHE:HB3	2.16	0.46
1:A:410:VAL:HG13	1:A:592:ILE:HG12	1.97	0.45
1:A:493:VAL:HG13	1:A:516:ILE:HD13	1.98	0.45
1:A:151:ARG:HD2	1:A:169:CYS:SG	2.57	0.45
1:A:51:ARG:HH11	1:A:51:ARG:CG	2.26	0.45
2:B:214:ASP:HA	2:B:215:PRO:HD3	1.83	0.44
1:A:114:LYS:O	1:A:118:THR:HB	2.18	0.44
1:A:276:ASN:H	6:B:301:PGE:H52	1.81	0.44
1:A:102:SER:HA	1:A:107:TYR:CG	2.52	0.44
1:A:803:GLN:O	3:A:901:FAD:H1'2	2.19	0.43
1:A:306:MET:CE	1:A:345:CYS:HA	2.48	0.43
1:A:454:LEU:HD13	1:A:581:VAL:HG12	1.99	0.43
1:A:626:THR:HG22	1:A:793:ALA:HB3	1.99	0.43
1:A:92:CYS:SG	1:A:94:GLU:HG2	2.59	0.43
1:A:436:ALA:HA	3:A:901:FAD:C4X	2.49	0.42
2:B:217:PHE:CD1	6:B:301:PGE:H32	2.52	0.42
1:A:149:LYS:CD	1:A:189:GLU:HB2	2.41	0.42

*Continued on next page...*

*Continued from previous page...*

Atom-1	Atom-2	Interatomic distance (Å)	Clash overlap (Å)
1:A:205:LEU:HD11	1:A:207:LEU:O	2.18	0.42
2:B:217:PHE:CB	6:B:301:PGE:O1	2.51	0.42
2:B:217:PHE:CG	6:B:301:PGE:C1	3.03	0.42
1:A:83:TYR:O	1:A:90:HIS:HA	2.19	0.42
1:A:352:ILE:O	1:A:356:MET:CG	2.63	0.41
1:A:100:TYR:HD2	1:A:101:ARG:HE	1.69	0.41
1:A:801:PHE:O	1:A:807:GLY:HA3	2.21	0.40
1:A:130:PHE:HD2	1:A:131:MET:HE2	1.86	0.40

There are no symmetry-related clashes.

## 5.3 Torsion angles [i](#)

### 5.3.1 Protein backbone [i](#)

In the following table, the Percentiles column shows the percent Ramachandran outliers of the chain as a percentile score with respect to all X-ray entries followed by that with respect to entries of similar resolution.

The Analysed column shows the number of residues for which the backbone conformation was analysed, and the total number of residues.

Mol	Chain	Analysed	Favoured	Allowed	Outliers	Percentiles	
1	A	736/776 (95%)	718 (98%)	18 (2%)	0	100	100
2	B	10/124 (8%)	9 (90%)	1 (10%)	0	100	100
All	All	746/900 (83%)	727 (98%)	19 (2%)	0	100	100

There are no Ramachandran outliers to report.

### 5.3.2 Protein sidechains [i](#)

In the following table, the Percentiles column shows the percent sidechain outliers of the chain as a percentile score with respect to all X-ray entries followed by that with respect to entries of similar resolution.

The Analysed column shows the number of residues for which the sidechain conformation was analysed, and the total number of residues.

Mol	Chain	Analysed	Rotameric	Outliers	Percentiles	
1	A	637/662 (96%)	606 (95%)	31 (5%)	31	25

*Continued on next page...*

*Continued from previous page...*

Mol	Chain	Analysed	Rotameric	Outliers	Percentiles	
2	B	12/106 (11%)	12 (100%)	0	100	100
All	All	649/768 (84%)	618 (95%)	31 (5%)	31	26

All (31) residues with a non-rotameric sidechain are listed below:

Mol	Chain	Res	Type
1	A	51	ARG
1	A	71	GLU
1	A	76	ASN
1	A	80	SER
1	A	85	LEU
1	A	101	ARG
1	A	118	THR
1	A	120	ASN
1	A	122	LYS
1	A	168	ARG
1	A	183	ASP
1	A	267	ARG
1	A	283	CYS
1	A	294	LEU
1	A	296	GLU
1	A	308	LEU
1	A	344	ARG
1	A	361	LEU
1	A	382	ASN
1	A	410	VAL
1	A	467	LEU
1	A	542	ASN
1	A	574	LEU
1	A	576	THR
1	A	585	LYS
1	A	680	PHE
1	A	693	LEU
1	A	707	SER
1	A	721	VAL
1	A	730	LEU
1	A	740	LEU

Some sidechains can be flipped to improve hydrogen bonding and reduce clashes. All (8) such sidechains are listed below:

Mol	Chain	Res	Type
1	A	76	ASN
1	A	120	ASN
1	A	152	GLN
1	A	400	GLN
1	A	542	ASN
1	A	553	GLN
1	A	728	GLN
2	B	216	HIS

### 5.3.3 RNA [i](#)

There are no RNA molecules in this entry.

## 5.4 Non-standard residues in protein, DNA, RNA chains [i](#)

There are no non-standard protein/DNA/RNA residues in this entry.

## 5.5 Carbohydrates [i](#)

There are no carbohydrates in this entry.

## 5.6 Ligand geometry [i](#)

Of 7 ligands modelled in this entry, 3 are monoatomic - leaving 4 for Mogul analysis.

In the following table, the Counts columns list the number of bonds (or angles) for which Mogul statistics could be retrieved, the number of bonds (or angles) that are observed in the model and the number of bonds (or angles) that are defined in the chemical component dictionary. The Link column lists molecule types, if any, to which the group is linked. The Z score for a bond length (or angle) is the number of standard deviations the observed value is removed from the expected value. A bond length (or angle) with  $|Z| > 2$  is considered an outlier worth inspection. RMSZ is the root-mean-square of all Z scores of the bond lengths (or angles).

Mol	Type	Chain	Res	Link	Bond lengths			Bond angles		
					Counts	RMSZ	$\# Z  > 2$	Counts	RMSZ	$\# Z  > 2$
3	FAD	A	901	-	48,58,58	2.09	15 (31%)	54,89,89	2.19	11 (20%)
4	GOL	A	902	-	5,5,5	0.18	0	5,5,5	0.38	0
4	GOL	A	903	-	5,5,5	0.34	0	5,5,5	0.52	0
6	PGE	B	301	-	9,9,9	0.52	0	8,8,8	1.47	0

In the following table, the Chirals column lists the number of chiral outliers, the number of chiral

centers analysed, the number of these observed in the model and the number defined in the chemical component dictionary. Similar counts are reported in the Torsion and Rings columns. '-' means no outliers of that kind were identified.

Mol	Type	Chain	Res	Link	Chirals	Torsions	Rings
3	FAD	A	901	-	-	0/30/50/50	0/6/6/6
4	GOL	A	902	-	-	0/4/4/4	0/0/0/0
4	GOL	A	903	-	-	0/4/4/4	0/0/0/0
6	PGE	B	301	-	-	0/7/7/7	0/0/0/0

All (15) bond length outliers are listed below:

Mol	Chain	Res	Type	Atoms	Z	Observed(Å)	Ideal(Å)
3	A	901	FAD	P-O2P	-4.98	1.33	1.54
3	A	901	FAD	PA-O2A	-4.45	1.36	1.54
3	A	901	FAD	O4B-C4B	-3.91	1.36	1.45
3	A	901	FAD	P-O1P	-3.56	1.38	1.51
3	A	901	FAD	O3'-C3'	-3.47	1.34	1.43
3	A	901	FAD	PA-O1A	-3.27	1.39	1.51
3	A	901	FAD	C5A-N7A	-3.22	1.28	1.39
3	A	901	FAD	O5'-C5'	-3.08	1.32	1.44
3	A	901	FAD	C4A-N3A	-2.99	1.31	1.35
3	A	901	FAD	O4'-C4'	-2.87	1.36	1.43
3	A	901	FAD	O2'-C2'	-2.86	1.36	1.43
3	A	901	FAD	O3B-C3B	-2.82	1.36	1.43
3	A	901	FAD	C6-C5X	-2.71	1.37	1.41
3	A	901	FAD	C8A-N7A	-2.50	1.29	1.34
3	A	901	FAD	PA-O5B	-2.07	1.49	1.59

All (11) bond angle outliers are listed below:

Mol	Chain	Res	Type	Atoms	Z	Observed(°)	Ideal(°)
3	A	901	FAD	N3A-C2A-N1A	-7.13	123.44	128.89
3	A	901	FAD	C4X-C4-N3	-4.06	118.04	123.59
3	A	901	FAD	C4B-O4B-C1B	-3.04	106.37	109.72
3	A	901	FAD	C4A-C5A-N7A	-2.98	106.74	109.48
3	A	901	FAD	C4X-C10-N10	-2.59	118.99	120.52
3	A	901	FAD	C9A-C5X-N5	-2.15	119.18	122.36
3	A	901	FAD	P-O3P-PA	-2.01	127.07	132.73
3	A	901	FAD	C5X-C9A-N10	3.37	120.18	117.62
3	A	901	FAD	C4X-N5-C5X	3.52	120.81	116.76
3	A	901	FAD	O3P-PA-O5B	3.93	113.35	102.94
3	A	901	FAD	C4-N3-C2	9.32	123.30	115.25

There are no chirality outliers.

There are no torsion outliers.

There are no ring outliers.

3 monomers are involved in 30 short contacts:

Mol	Chain	Res	Type	Clashes	Symm-Clashes
3	A	901	FAD	2	0
4	A	903	GOL	3	0
6	B	301	PGE	25	0

## 5.7 Other polymers [i](#)

There are no such residues in this entry.

## 5.8 Polymer linkage issues [i](#)

There are no chain breaks in this entry.



## 6 Fit of model and data

### 6.1 Protein, DNA and RNA chains

In the following table, the column labelled ‘#RSRZ> 2’ contains the number (and percentage) of RSRZ outliers, followed by percent RSRZ outliers for the chain as percentile scores relative to all X-ray entries and entries of similar resolution. The OWAB column contains the minimum, median, 95<sup>th</sup> percentile and maximum values of the occupancy-weighted average B-factor per residue. The column labelled ‘Q< 0.9’ lists the number of (and percentage) of residues with an average occupancy less than 0.9.

Mol	Chain	Analysed	<RSRZ>	#RSRZ>2	OWAB(Å <sup>2</sup> )	Q<0.9
1	A	740/776 (95%)	0.37	40 (5%) 29 31	18, 35, 65, 93	0
2	B	12/124 (9%)	1.39	4 (33%) 0 1	27, 36, 76, 84	0
All	All	752/900 (83%)	0.39	44 (5%) 26 27	18, 35, 65, 93	0

All (44) RSRZ outliers are listed below:

Mol	Chain	Res	Type	RSRZ
1	A	200	TRP	7.0
1	A	59	THR	6.5
1	A	48	LEU	6.5
1	A	60	ALA	6.4
1	A	62	CYS	6.3
1	A	61	THR	6.2
1	A	47	PRO	6.1
1	A	57	GLY	5.2
1	A	87	CYS	4.7
1	A	82	TRP	4.7
2	B	215	PRO	4.6
2	B	217	PHE	4.4
1	A	52	LYS	4.2
1	A	191	LEU	4.1
1	A	50	SER	3.9
2	B	216	HIS	3.8
1	A	493	VAL	3.6
1	A	49	GLY	3.5
1	A	521	ILE	3.3
1	A	206	ILE	3.2
2	B	214	ASP	3.2
1	A	204	MET	3.2
1	A	194	LEU	3.2
1	A	264	GLY	3.1

*Continued on next page...*

*Continued from previous page...*

Mol	Chain	Res	Type	RSRZ
1	A	527	GLN	3.1
1	A	55	LYS	3.0
1	A	83	TYR	3.0
1	A	51	ARG	3.0
1	A	53	CYS	2.9
1	A	235	THR	2.8
1	A	486	HIS	2.8
1	A	173	PRO	2.6
1	A	58	CYS	2.5
1	A	124	GLU	2.3
1	A	523	GLU	2.3
1	A	526	ILE	2.3
1	A	100	TYR	2.3
1	A	520	PHE	2.2
1	A	111	THR	2.2
1	A	201	TRP	2.1
1	A	101	ARG	2.1
1	A	199	HIS	2.1
1	A	77	GLY	2.0
1	A	183	ASP	2.0

## 6.2 Non-standard residues in protein, DNA, RNA chains [i](#)

There are no non-standard protein/DNA/RNA residues in this entry.

## 6.3 Carbohydrates [i](#)

There are no carbohydrates in this entry.

## 6.4 Ligands [i](#)

In the following table, the Atoms column lists the number of modelled atoms in the group and the number defined in the chemical component dictionary. LLDF column lists the quality of electron density of the group with respect to its neighbouring residues in protein, DNA or RNA chains. The B-factors column lists the minimum, median, 95<sup>th</sup> percentile and maximum values of B factors of atoms in the group. The column labelled 'Q< 0.9' lists the number of atoms with occupancy less than 0.9.

Mol	Type	Chain	Res	Atoms	RSCC	RSR	LLDF	B-factors(Å <sup>2</sup> )	Q<0.9
4	GOL	A	903	6/6	0.90	0.16	2.68	32,37,37,42	0

*Continued on next page...*

*Continued from previous page...*

Mol	Type	Chain	Res	Atoms	RSCC	RSR	LLDF	B-factors( $\text{\AA}^2$ )	Q<0.9
6	PGE	B	301	10/10	0.71	0.30	2.04	55,61,64,64	0
4	GOL	A	902	6/6	0.91	0.18	1.87	32,33,36,43	0
5	ZN	A	906	1/1	0.96	0.10	-0.46	44,44,44,44	0
3	FAD	A	901	53/53	0.97	0.12	-0.67	16,21,26,27	0
5	ZN	A	904	1/1	0.97	0.04	-1.88	47,47,47,47	0
5	ZN	A	905	1/1	0.98	0.07	-2.39	37,37,37,37	0

## 6.5 Other polymers [i](#)

There are no such residues in this entry.