



wwPDB X-ray Structure Validation Summary Report ⓘ

Jan 31, 2016 – 07:45 PM GMT

PDB ID : 1H1R
Title : STRUCTURE OF HUMAN THR160-PHOSPHO CDK2/CYCLIN A COM-
PLEXED WITH THE INHIBITOR NU6086
Authors : Davies, T.G.; Noble, M.E.M.; Endicott, J.A.; Johnson, L.N.
Deposited on : 2002-07-21
Resolution : 2.00 Å(reported)

This is a wwPDB X-ray Structure Validation Summary Report for a publicly released PDB entry.
We welcome your comments at validation@mail.wwpdb.org
A user guide is available at
<http://wwpdb.org/validation/2016/XrayValidationReportHelp>
with specific help available everywhere you see the ⓘ symbol.

The following versions of software and data (see [references ⓘ](#)) were used in the production of this report:

MolProbity : 4.02b-467
Mogul : 1.7 (RC4), CSD as536be (2015)
Xtriage (Phenix) : 1.9-1692
EDS : rb-20026688
Percentile statistics : 20151230.v01 (using entries in the PDB archive December 30th 2015)
Refmac : 5.8.0135
CCP4 : 6.5.0
Ideal geometry (proteins) : Engh & Huber (2001)
Ideal geometry (DNA, RNA) : Parkinson et al. (1996)
Validation Pipeline (wwPDB-VP) : trunk26865

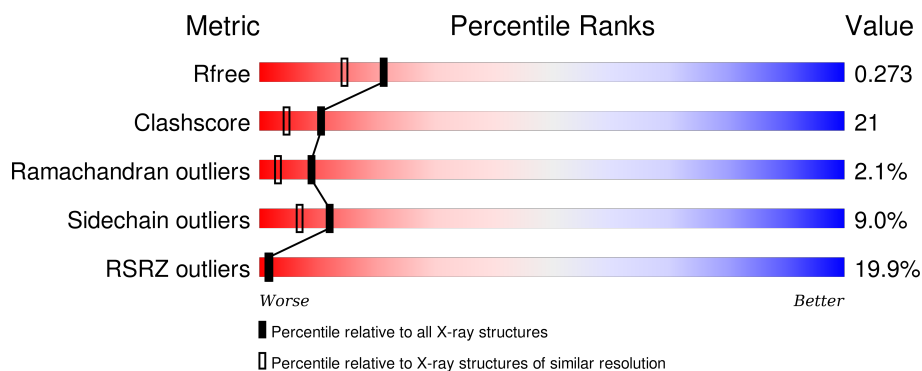
1 Overall quality at a glance ⓘ

The following experimental techniques were used to determine the structure:

X-RAY DIFFRACTION

The reported resolution of this entry is 2.00 Å.

Percentile scores (ranging between 0-100) for global validation metrics of the entry are shown in the following graphic. The table shows the number of entries on which the scores are based.



Metric	Whole archive (#Entries)	Similar resolution (#Entries, resolution range(Å))
R_{free}	91344	6249 (2.00-2.00)
Clashscore	102246	7340 (2.00-2.00)
Ramachandran outliers	100387	7248 (2.00-2.00)
Sidechain outliers	100360	7247 (2.00-2.00)
RSRZ outliers	91569	6262 (2.00-2.00)

The table below summarises the geometric issues observed across the polymeric chains and their fit to the electron density. The red, orange, yellow and green segments on the lower bar indicate the fraction of residues that contain outliers for ≥ 3 , 2, 1 and 0 types of geometric quality criteria. A grey segment represents the fraction of residues that are not modelled. The numeric value for each fraction is indicated below the corresponding segment, with a dot representing fractions $\leq 5\%$. The upper red bar (where present) indicates the fraction of residues that have poor fit to the electron density. The numeric value is given above the bar.

Mol	Chain	Length	Quality of chain
1	A	303	<div> <div>6%</div> <div>64%</div> <div>25%</div> <div>6%</div> <div>• •</div> </div>
1	C	303	<div> <div>32%</div> <div>48%</div> <div>39%</div> <div>8%</div> <div>• •</div> </div>
2	B	258	<div> <div>5%</div> <div>75%</div> <div>17%</div> <div>5%</div> <div>•</div> </div>
2	D	258	<div> <div>35%</div> <div>45%</div> <div>47%</div> <div>7%</div> <div>•</div> </div>

2 Entry composition [i](#)

There are 4 unique types of molecules in this entry. The entry contains 9724 atoms, of which 0 are hydrogens and 0 are deuteriums.

In the tables below, the ZeroOcc column contains the number of atoms modelled with zero occupancy, the AltConf column contains the number of residues with at least one atom in alternate conformation and the Trace column contains the number of residues modelled with at most 2 atoms.

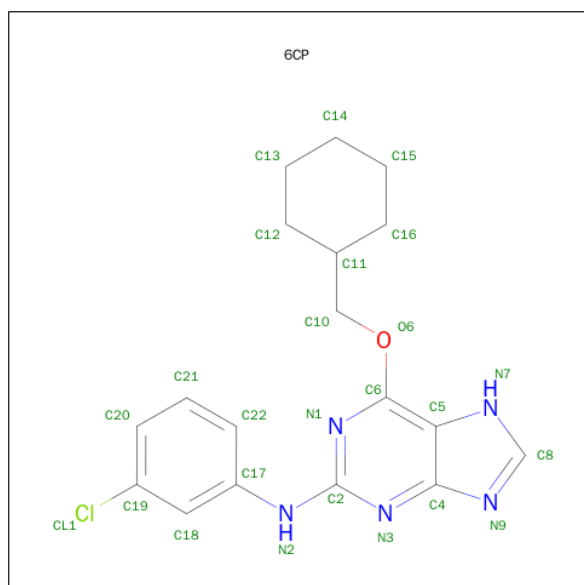
- Molecule 1 is a protein called CELL DIVISION PROTEIN KINASE 2.

Mol	Chain	Residues	Atoms						ZeroOcc	AltConf	Trace
1	A	297	Total	C	N	O	P	S	0	0	0
			2388	1550	404	425	1	8			
1	C	297	Total	C	N	O	P	S	0	0	0
			2388	1550	404	425	1	8			

- Molecule 2 is a protein called CYCLIN A2.

Mol	Chain	Residues	Atoms					ZeroOcc	AltConf	Trace
2	B	258	Total	C	N	O	S	0	0	0
			2083	1350	339	383	11			
2	D	258	Total	C	N	O	S	0	0	0
			2083	1350	339	383	11			

- Molecule 3 is 6-CYCLOHEXYLMETHOXY-2-(3'-CHLOROANILINO) PURINE (three-letter code: 6CP) (formula: C₁₈H₂₀ClN₅O).



Mol	Chain	Residues	Atoms					ZeroOcc	AltConf
3	A	1	Total	C	Cl	N	O	0	1
			33	24	2	6	1		
3	C	1	Total	C	Cl	N	O	0	1
			26	18	2	5	1		

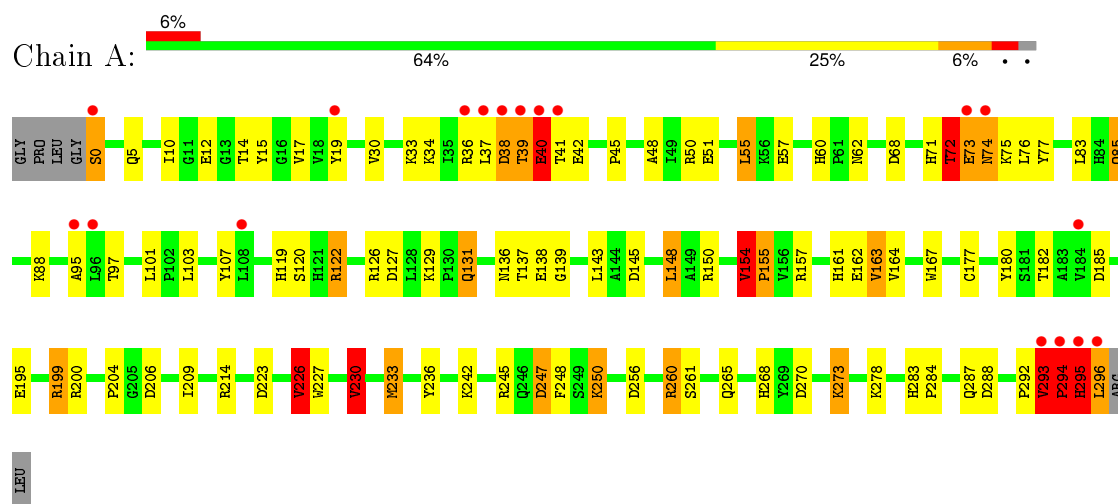
- Molecule 4 is water.

Mol	Chain	Residues	Atoms		ZeroOcc	AltConf
4	A	266	Total	O	0	0
			266	266		
4	B	229	Total	O	0	0
			229	229		
4	C	145	Total	O	0	0
			145	145		
4	D	83	Total	O	0	0
			83	83		

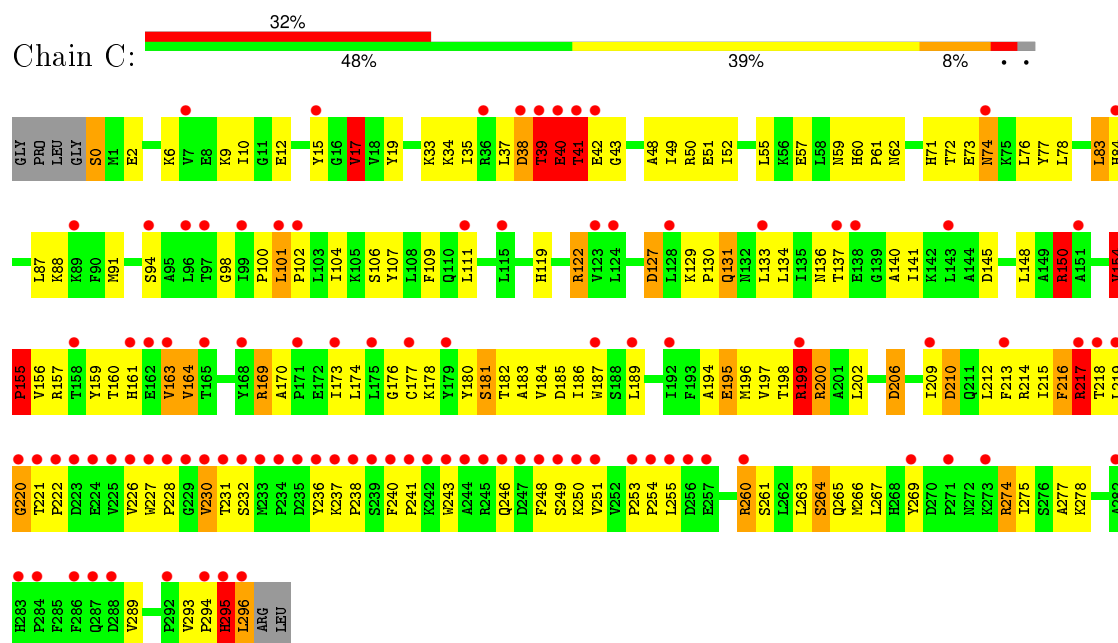
3 Residue-property plots [i](#)

These plots are drawn for all protein, RNA and DNA chains in the entry. The first graphic for a chain summarises the proportions of errors displayed in the second graphic. The second graphic shows the sequence view annotated by issues in geometry and electron density. Residues are color-coded according to the number of geometric quality criteria for which they contain at least one outlier: green = 0, yellow = 1, orange = 2 and red = 3 or more. A red dot above a residue indicates a poor fit to the electron density ($RSRZ > 2$). Stretches of 2 or more consecutive residues without any outlier are shown as a green connector. Residues present in the sample, but not in the model, are shown in grey.


• Molecule 1: CELL DIVISION PROTEIN KINASE 2

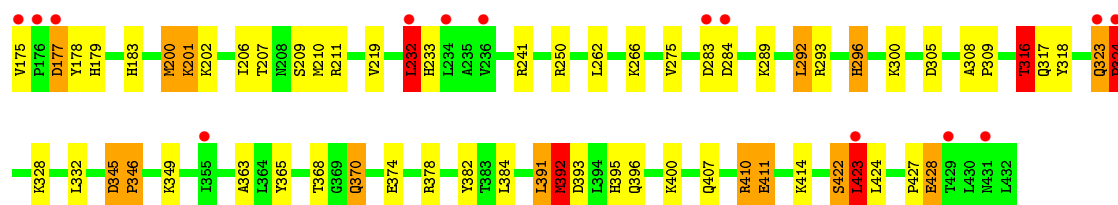


• Molecule 1: CELL DIVISION PROTEIN KINASE 2



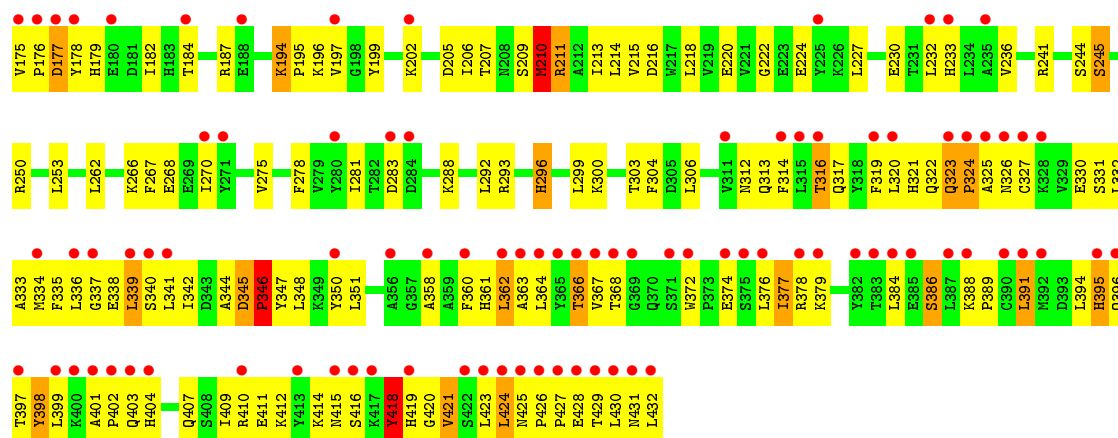
• Molecule 2: CYCLIN A2

Chain B: 



• Molecule 2: CYCLIN A2

Chain D: 



4 Data and refinement statistics

Property	Value	Source
Space group	P 21 21 21	Depositor
Cell constants a, b, c, α , β , γ	74.11Å 134.95Å 148.33Å 90.00° 90.00° 90.00°	Depositor
Resolution (Å)	20.00 – 2.00 32.20 – 2.00	Depositor EDS
% Data completeness (in resolution range)	93.9 (20.00-2.00) 92.8 (32.20-2.00)	Depositor EDS
R_{merge}	0.07	Depositor
R_{sym}	(Not available)	Depositor
$\langle I/\sigma(I) \rangle$ ¹	1.52 (at 2.00Å)	Xtriage
Refinement program	REFMAC	Depositor
R, R_{free}	0.235 , 0.294 0.224 , 0.273	Depositor DCC
R_{free} test set	4693 reflections (5.28%)	DCC
Wilson B-factor (Å ²)	30.6	Xtriage
Anisotropy	0.224	Xtriage
Bulk solvent k_{sol} (e/Å ³), B_{sol} (Å ²)	0.38 , 80.0	EDS
Estimated twinning fraction	No twinning to report.	Xtriage
L-test for twinning ²	$\langle L \rangle = 0.49$, $\langle L^2 \rangle = 0.32$	Xtriage
Outliers	1 of 93678 reflections (0.001%)	Xtriage
F_o, F_c correlation	0.93	EDS
Total number of atoms	9724	wwPDB-VP
Average B, all atoms (Å ²)	46.0	wwPDB-VP

Xtriage's analysis on translational NCS is as follows: *The largest off-origin peak in the Patterson function is 2.90% of the height of the origin peak. No significant pseudotranslation is detected.*

¹Intensities estimated from amplitudes.

²Theoretical values of $\langle |L| \rangle$, $\langle L^2 \rangle$ for acentric reflections are 0.5, 0.375 respectively for untwinned datasets, and 0.333, 0.2 for perfectly twinned datasets.

5 Model quality

5.1 Standard geometry

Bond lengths and bond angles in the following residue types are not validated in this section: TPO, 6CP

The Z score for a bond length (or angle) is the number of standard deviations the observed value is removed from the expected value. A bond length (or angle) with $|Z| > 5$ is considered an outlier worth inspection. RMSZ is the root-mean-square of all Z scores of the bond lengths (or angles).

Mol	Chain	Bond lengths		Bond angles	
		RMSZ	$\# Z > 5$	RMSZ	$\# Z > 5$
1	A	0.87	2/2438 (0.1%)	2.02	70/3308 (2.1%)
1	C	0.62	0/2438	1.71	43/3308 (1.3%)
2	B	0.80	0/2133	1.72	36/2897 (1.2%)
2	D	0.62	0/2133	1.61	30/2897 (1.0%)
All	All	0.74	2/9142 (0.0%)	1.78	179/12410 (1.4%)

Chiral center outliers are detected by calculating the chiral volume of a chiral center and verifying if the center is modelled as a planar moiety or with the opposite hand. A planarity outlier is detected by checking planarity of atoms in a peptide group, atoms in a mainchain group or atoms of a sidechain that are expected to be planar.

Mol	Chain	#Chirality outliers	#Planarity outliers
1	A	0	4
1	C	0	2
2	B	0	5
2	D	0	4
All	All	0	15

All (2) bond length outliers are listed below:

Mol	Chain	Res	Type	Atoms	Z	Observed(Å)	Ideal(Å)
1	A	120	SER	CA-CB	5.75	1.61	1.52
1	A	293	VAL	N-CA	5.40	1.57	1.46

The worst 5 of 179 bond angle outliers are listed below:

Mol	Chain	Res	Type	Atoms	Z	Observed(°)	Ideal(°)
1	C	199	ARG	CD-NE-CZ	27.03	161.44	123.60
1	A	199	ARG	CD-NE-CZ	24.57	158.00	123.60
1	C	217	ARG	CD-NE-CZ	24.00	157.20	123.60

Continued on next page...

Continued from previous page...

Mol	Chain	Res	Type	Atoms	Z	Observed(°)	Ideal(°)
1	A	294	PRO	C-N-CA	22.15	177.06	121.70
1	A	295	HIS	N-CA-CB	18.07	143.12	110.60

There are no chirality outliers.

5 of 15 planarity outliers are listed below:

Mol	Chain	Res	Type	Group
1	A	0	SER	Mainchain
1	A	154	VAL	Mainchain,Peptide
1	A	293	VAL	Mainchain
2	B	323	GLN	Mainchain,Peptide
2	B	345	ASP	Mainchain

5.2 Too-close contacts ⓘ

In the following table, the Non-H and H(model) columns list the number of non-hydrogen atoms and hydrogen atoms in the chain respectively. The H(added) column lists the number of hydrogen atoms added and optimized by MolProbity. The Clashes column lists the number of clashes within the asymmetric unit, whereas Symm-Clashes lists symmetry related clashes.

Mol	Chain	Non-H	H(model)	H(added)	Clashes	Symm-Clashes
1	A	2388	0	2428	83	0
1	C	2388	0	2429	151	0
2	B	2083	0	2107	59	0
2	D	2083	0	2107	110	0
3	A	33	0	9	1	0
3	C	26	0	0	0	0
4	A	266	0	0	16	0
4	B	229	0	0	12	0
4	C	145	0	0	46	0
4	D	83	0	0	11	0
All	All	9724	0	9080	386	0

The all-atom clashscore is defined as the number of clashes found per 1000 atoms (including hydrogen atoms). The all-atom clashscore for this structure is 21.

The worst 5 of 386 close contacts within the same asymmetric unit are listed below, sorted by their clash magnitude.

Atom-1	Atom-2	Interatomic distance (Å)	Clash overlap (Å)
1:A:230:VAL:HA	1:A:233:MET:HE3	1.35	1.04

Continued on next page...

Continued from previous page...

Atom-1	Atom-2	Interatomic distance (Å)	Clash overlap (Å)
2:B:423:LEU:HB2	4:B:2222:HOH:O	1.63	0.98
1:A:177:CYS:HB2	4:A:2152:HOH:O	1.68	0.90
1:A:41:THR:HG22	1:A:42:GLU:H	1.39	0.88
2:B:177:ASP:HB2	4:B:2048:HOH:O	1.74	0.86

There are no symmetry-related clashes.

5.3 Torsion angles [i](#)

5.3.1 Protein backbone [i](#)

In the following table, the Percentiles column shows the percent Ramachandran outliers of the chain as a percentile score with respect to all X-ray entries followed by that with respect to entries of similar resolution.

The Analysed column shows the number of residues for which the backbone conformation was analysed, and the total number of residues.

Mol	Chain	Analysed	Favoured	Allowed	Outliers	Percentiles	
1	A	294/303 (97%)	280 (95%)	8 (3%)	6 (2%)	9	3
1	C	294/303 (97%)	265 (90%)	18 (6%)	11 (4%)	4	1
2	B	256/258 (99%)	251 (98%)	3 (1%)	2 (1%)	24	15
2	D	256/258 (99%)	230 (90%)	22 (9%)	4 (2%)	12	5
All	All	1100/1122 (98%)	1026 (93%)	51 (5%)	23 (2%)	9	3

5 of 23 Ramachandran outliers are listed below:

Mol	Chain	Res	Type
1	A	38	ASP
1	A	293	VAL
1	A	294	PRO
1	C	38	ASP
1	C	39	THR

5.3.2 Protein sidechains [i](#)

In the following table, the Percentiles column shows the percent sidechain outliers of the chain as a percentile score with respect to all X-ray entries followed by that with respect to entries of similar resolution.

The Analysed column shows the number of residues for which the sidechain conformation was analysed, and the total number of residues.

Mol	Chain	Analysed	Rotameric	Outliers	Percentiles	
1	A	261/265 (98%)	236 (90%)	25 (10%)	10	6
1	C	261/265 (98%)	232 (89%)	29 (11%)	8	4
2	B	232/232 (100%)	218 (94%)	14 (6%)	24	17
2	D	232/232 (100%)	211 (91%)	21 (9%)	12	6
All	All	986/994 (99%)	897 (91%)	89 (9%)	12	7

5 of 89 residues with a non-rotameric sidechain are listed below:

Mol	Chain	Res	Type
1	C	2	GLU
1	C	83	LEU
2	D	368	THR
1	C	9	LYS
1	C	41	THR

Some sidechains can be flipped to improve hydrogen bonding and reduce clashes. 5 of 25 such sidechains are listed below:

Mol	Chain	Res	Type
2	B	370	GLN
2	B	396	GLN
2	D	361	HIS
2	B	395	HIS
1	C	60	HIS

5.3.3 RNA ⓘ

There are no RNA molecules in this entry.

5.4 Non-standard residues in protein, DNA, RNA chains ⓘ

2 non-standard protein/DNA/RNA residues are modelled in this entry.

In the following table, the Counts columns list the number of bonds (or angles) for which Mogul statistics could be retrieved, the number of bonds (or angles) that are observed in the model and the number of bonds (or angles) that are defined in the chemical component dictionary. The Link column lists molecule types, if any, to which the group is linked. The Z score for a bond length (or angle) is the number of standard deviations the observed value is removed from the expected

value. A bond length (or angle) with $|Z| > 2$ is considered an outlier worth inspection. RMSZ is the root-mean-square of all Z scores of the bond lengths (or angles).

Mol	Type	Chain	Res	Link	Bond lengths			Bond angles		
					Counts	RMSZ	$\# Z > 2$	Counts	RMSZ	$\# Z > 2$
1	TPO	A	160	1	8,10,11	1.27	1 (12%)	7,14,16	1.72	2 (28%)
1	TPO	C	160	1	8,10,11	1.47	2 (25%)	7,14,16	1.43	1 (14%)

In the following table, the Chirals column lists the number of chiral outliers, the number of chiral centers analysed, the number of these observed in the model and the number defined in the chemical component dictionary. Similar counts are reported in the Torsion and Rings columns. '-' means no outliers of that kind were identified.

Mol	Type	Chain	Res	Link	Chirals	Torsions	Rings
1	TPO	A	160	1	-	0/8/11/13	0/0/0/0
1	TPO	C	160	1	-	0/8/11/13	0/0/0/0

All (3) bond length outliers are listed below:

Mol	Chain	Res	Type	Atoms	Z	Observed(Å)	Ideal(Å)
1	C	160	TPO	P-OG1	2.30	1.67	1.60
1	A	160	TPO	CG2-CB	2.64	1.58	1.51
1	C	160	TPO	P-O2P	2.68	1.64	1.54

All (3) bond angle outliers are listed below:

Mol	Chain	Res	Type	Atoms	Z	Observed(°)	Ideal(°)
1	A	160	TPO	O-C-CA	-3.13	117.18	125.44
1	C	160	TPO	O-C-CA	-2.27	119.44	125.44
1	A	160	TPO	O3P-P-O2P	2.20	115.74	107.38

There are no chirality outliers.

There are no torsion outliers.

There are no ring outliers.

1 monomer is involved in 2 short contacts:

Mol	Chain	Res	Type	Clashes	Symm-Clashes
1	C	160	TPO	2	0

5.5 Carbohydrates ⓘ

There are no carbohydrates in this entry.

5.6 Ligand geometry

4 ligands are modelled in this entry.

In the following table, the Counts columns list the number of bonds (or angles) for which Mogul statistics could be retrieved, the number of bonds (or angles) that are observed in the model and the number of bonds (or angles) that are defined in the chemical component dictionary. The Link column lists molecule types, if any, to which the group is linked. The Z score for a bond length (or angle) is the number of standard deviations the observed value is removed from the expected value. A bond length (or angle) with $|Z| > 2$ is considered an outlier worth inspection. RMSZ is the root-mean-square of all Z scores of the bond lengths (or angles).

Mol	Type	Chain	Res	Link	Bond lengths			Bond angles		
					Counts	RMSZ	$\# Z > 2$	Counts	RMSZ	$\# Z > 2$
3	6CP	A	1298[A]	-	25,28,28	1.75	7 (28%)	29,38,38	3.17	9 (31%)
3	6CP	A	1298[B]	-	25,28,28	1.76	7 (28%)	29,38,38	3.58	11 (37%)
3	6CP	C	1298[A]	-	25,28,28	19.90	8 (32%)	29,38,38	12.30	13 (44%)
3	6CP	C	1298[B]	-	25,28,28	2.00	7 (28%)	29,38,38	3.49	11 (37%)

In the following table, the Chirals column lists the number of chiral outliers, the number of chiral centers analysed, the number of these observed in the model and the number defined in the chemical component dictionary. Similar counts are reported in the Torsion and Rings columns. '-' means no outliers of that kind were identified.

Mol	Type	Chain	Res	Link	Chirals	Torsions	Rings
3	6CP	A	1298[A]	-	-	0/9/17/17	0/4/4/4
3	6CP	A	1298[B]	-	-	0/9/17/17	0/4/4/4
3	6CP	C	1298[A]	-	-	0/9/17/17	0/4/4/4
3	6CP	C	1298[B]	-	-	0/9/17/17	0/4/4/4

The worst 5 of 29 bond length outliers are listed below:

Mol	Chain	Res	Type	Atoms	Z	Observed(Å)	Ideal(Å)
3	C	1298[B]	6CP	C6-N1	-3.97	1.24	1.31
3	C	1298[A]	6CP	C6-N1	-3.97	1.24	1.31
3	A	1298[B]	6CP	C2-N2	-3.53	1.30	1.36
3	A	1298[A]	6CP	C2-N2	-3.35	1.30	1.36
3	C	1298[B]	6CP	C5-C4	-3.09	1.33	1.40

The worst 5 of 44 bond angle outliers are listed below:

Mol	Chain	Res	Type	Atoms	Z	Observed(°)	Ideal(°)
3	C	1298[A]	6CP	C20-C19-CL1	-61.89	17.85	119.35
3	C	1298[A]	6CP	C18-C19-CL1	-14.40	101.26	119.14

Continued on next page...

Continued from previous page...

Mol	Chain	Res	Type	Atoms	Z	Observed(°)	Ideal(°)
3	A	1298[B]	6CP	C10-O6-C6	-11.60	105.11	117.23
3	A	1298[A]	6CP	C10-O6-C6	-11.60	105.11	117.23
3	C	1298[B]	6CP	N3-C2-N1	-7.95	114.02	126.22

There are no chirality outliers.

There are no torsion outliers.

There are no ring outliers.

1 monomer is involved in 1 short contact:

Mol	Chain	Res	Type	Clashes	Symm-Clashes
3	A	1298[A]	6CP	1	0

5.7 Other polymers [i](#)

There are no such residues in this entry.

5.8 Polymer linkage issues [i](#)

There are no chain breaks in this entry.

6 Fit of model and data [i](#)

6.1 Protein, DNA and RNA chains [i](#)

In the following table, the column labelled ‘#RSRZ> 2’ contains the number (and percentage) of RSRZ outliers, followed by percent RSRZ outliers for the chain as percentile scores relative to all X-ray entries and entries of similar resolution. The OWAB column contains the minimum, median, 95th percentile and maximum values of the occupancy-weighted average B-factor per residue. The column labelled ‘Q< 0.9’ lists the number of (and percentage) of residues with an average occupancy less than 0.9.

Mol	Chain	Analysed	<RSRZ>	#RSRZ>2	OWAB(Å ²)	Q<0.9
1	A	296/303 (97%)	0.49	18 (6%) 25 26	19, 31, 61, 91	0
1	C	296/303 (97%)	2.00	98 (33%) 0 1	31, 54, 85, 99	0
2	B	258/258 (100%)	0.38	14 (5%) 29 31	21, 32, 50, 74	0
2	D	258/258 (100%)	1.65	90 (34%) 0 1	31, 58, 85, 96	0
All	All	1108/1122 (98%)	1.14	220 (19%) 1 2	19, 42, 81, 99	0

The worst 5 of 220 RSRZ outliers are listed below:

Mol	Chain	Res	Type	RSRZ
1	C	226	VAL	14.8
1	C	225	VAL	14.4
1	C	244	ALA	13.9
2	B	175	VAL	12.5
1	C	233	MET	12.5

6.2 Non-standard residues in protein, DNA, RNA chains [i](#)

In the following table, the Atoms column lists the number of modelled atoms in the group and the number defined in the chemical component dictionary. LLDF column lists the quality of electron density of the group with respect to its neighbouring residues in protein, DNA or RNA chains. The B-factors column lists the minimum, median, 95th percentile and maximum values of B factors of atoms in the group. The column labelled ‘Q< 0.9’ lists the number of atoms with occupancy less than 0.9.

Mol	Type	Chain	Res	Atoms	RSCC	RSR	LLDF	B-factors(Å ²)	Q<0.9
1	TPO	C	160	11/12	0.92	0.15	-	34,44,50,52	0
1	TPO	A	160	11/12	0.99	0.10	-	24,26,27,27	0

6.3 Carbohydrates [i](#)

There are no carbohydrates in this entry.

6.4 Ligands [i](#)

In the following table, the Atoms column lists the number of modelled atoms in the group and the number defined in the chemical component dictionary. LLDF column lists the quality of electron density of the group with respect to its neighbouring residues in protein, DNA or RNA chains. The B-factors column lists the minimum, median, 95th percentile and maximum values of B factors of atoms in the group. The column labelled 'Q< 0.9' lists the number of atoms with occupancy less than 0.9.

Mol	Type	Chain	Res	Atoms	RSCC	RSR	LLDF	B-factors(\AA^2)	Q<0.9
3	6CP	A	1298[A]	25/25	0.92	0.15	1.89	29,35,39,40	8
3	6CP	A	1298[B]	25/25	0.92	0.15	1.17	29,34,37,37	8
3	6CP	C	1298[B]	25/25	0.93	0.16	-0.26	36,42,47,48	1
3	6CP	C	1298[A]	25/25	0.93	0.16	-1.00	36,42,47,48	1

6.5 Other polymers [i](#)

There are no such residues in this entry.