



Full wwPDB X-ray Structure Validation Report ⓘ

Feb 1, 2016 – 02:26 AM GMT

PDB ID : 2H3W
Title : Crystal structure of the S554A/M564G mutant of murine carnitine acetyltransferase in complex with hexanoylcarnitine and CoA
Authors : Hsiao, Y.S.; Jogl, G.; Tong, L.
Deposited on : 2006-05-23
Resolution : 2.10 Å(reported)

This is a Full wwPDB X-ray Structure Validation Report for a publicly released PDB entry.
We welcome your comments at validation@mail.wwpdb.org
A user guide is available at
<http://wwpdb.org/validation/2016/XrayValidationReportHelp>
with specific help available everywhere you see the ⓘ symbol.

The following versions of software and data (see [references ⓘ](#)) were used in the production of this report:

MolProbity : 4.02b-467
Mogul : 1.7 (RC4), CSD as536be (2015)
Xtriage (Phenix) : 1.9-1692
EDS : rb-20026688
Percentile statistics : 20151230.v01 (using entries in the PDB archive December 30th 2015)
Refmac : 5.8.0135
CCP4 : 6.5.0
Ideal geometry (proteins) : Engh & Huber (2001)
Ideal geometry (DNA, RNA) : Parkinson et al. (1996)
Validation Pipeline (wwPDB-VP) : trunk26865

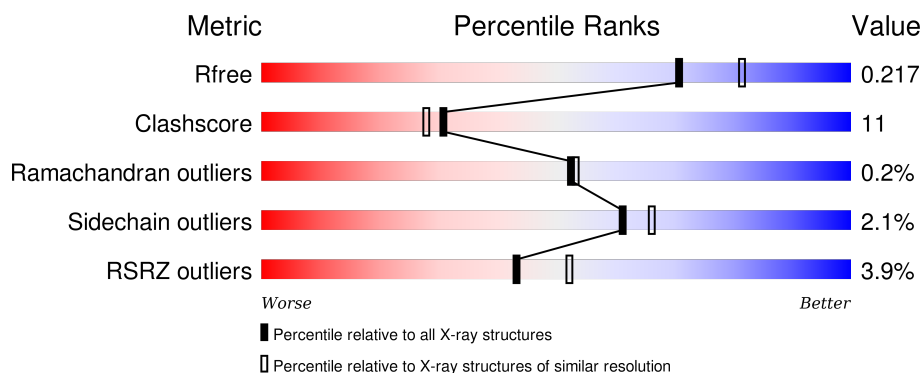
1 Overall quality at a glance

The following experimental techniques were used to determine the structure:

X-RAY DIFFRACTION

The reported resolution of this entry is 2.10 Å.

Percentile scores (ranging between 0-100) for global validation metrics of the entry are shown in the following graphic. The table shows the number of entries on which the scores are based.



Metric	Whole archive (#Entries)	Similar resolution (#Entries, resolution range(Å))
R_{free}	91344	3939 (2.10-2.10)
Clashscore	102246	4460 (2.10-2.10)
Ramachandran outliers	100387	4413 (2.10-2.10)
Sidechain outliers	100360	4414 (2.10-2.10)
RSRZ outliers	91569	3948 (2.10-2.10)

The table below summarises the geometric issues observed across the polymeric chains and their fit to the electron density. The red, orange, yellow and green segments on the lower bar indicate the fraction of residues that contain outliers for ≥ 3 , 2, 1 and 0 types of geometric quality criteria. A grey segment represents the fraction of residues that are not modelled. The numeric value for each fraction is indicated below the corresponding segment, with a dot representing fractions $\leq 5\%$. The upper red bar (where present) indicates the fraction of residues that have poor fit to the electron density. The numeric value is given above the bar.

Mol	Chain	Length	Quality of chain
1	A	599	<div> <div>4%</div> <div>75%</div> <div>23%</div> <div>.</div> </div>
1	B	599	<div> <div>4%</div> <div>81%</div> <div>18%</div> <div>.</div> </div>

The following table lists non-polymeric compounds, carbohydrate monomers and non-standard residues in protein, DNA, RNA chains that are outliers for geometric or electron-density-fit criteria:

Mol	Type	Chain	Res	Chirality	Geometry	Clashes	Electron density
3	HC5	A	1602	-	-	-	X

2 Entry composition

There are 4 unique types of molecules in this entry. The entry contains 11184 atoms, of which 0 are hydrogens and 0 are deuteriums.

In the tables below, the ZeroOcc column contains the number of atoms modelled with zero occupancy, the AltConf column contains the number of residues with at least one atom in alternate conformation and the Trace column contains the number of residues modelled with at most 2 atoms.

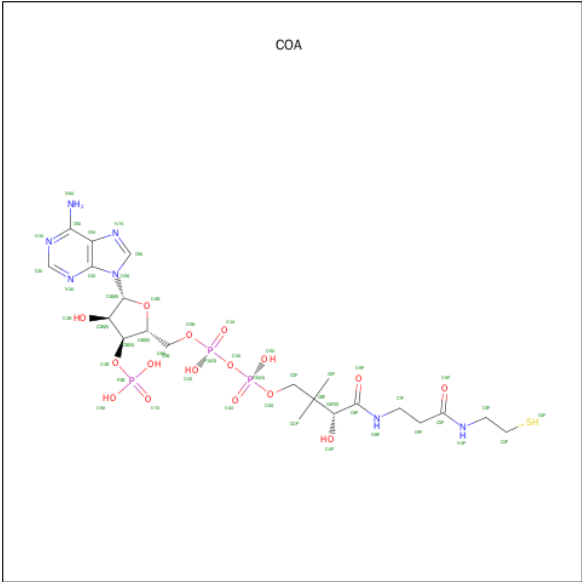
- Molecule 1 is a protein called carnitine acetyltransferase.

Mol	Chain	Residues	Atoms					ZeroOcc	AltConf	Trace
1	A	599	Total	C	N	O	S	0	0	0
			4776	3045	825	878	28			
1	B	599	Total	C	N	O	S	0	0	0
			4776	3045	825	878	28			

There are 10 discrepancies between the modelled and reference sequences:

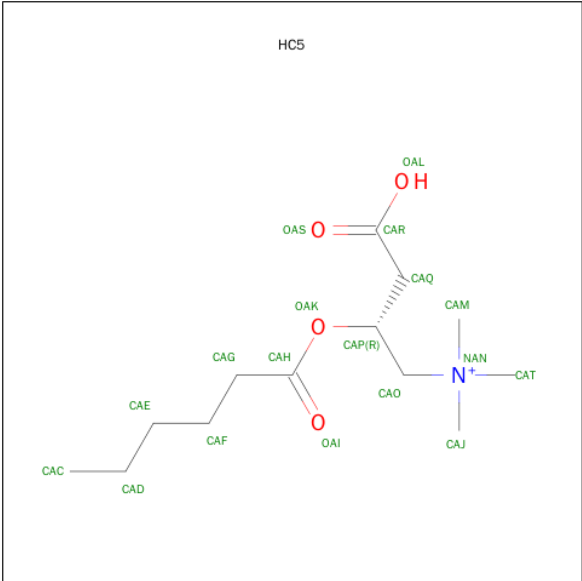
Chain	Residue	Modelled	Actual	Comment	Reference
A	27	SER	-	CLONING ARTIFACT	UNP Q3V1Y3
A	28	HIS	-	CLONING ARTIFACT	UNP Q3V1Y3
A	29	MET	-	CLONING ARTIFACT	UNP Q3V1Y3
A	554	ALA	SER	ENGINEERED	UNP Q3V1Y3
A	564	GLY	MET	ENGINEERED	UNP Q3V1Y3
B	27	SER	-	CLONING ARTIFACT	UNP Q3V1Y3
B	28	HIS	-	CLONING ARTIFACT	UNP Q3V1Y3
B	29	MET	-	CLONING ARTIFACT	UNP Q3V1Y3
B	554	ALA	SER	ENGINEERED	UNP Q3V1Y3
B	564	GLY	MET	ENGINEERED	UNP Q3V1Y3

- Molecule 2 is COENZYME A (three-letter code: COA) (formula: C₂₁H₃₆N₇O₁₆P₃S).



Mol	Chain	Residues	Atoms						ZeroOcc	AltConf
2	A	1	Total	C	N	O	P	S	0	0
			48	21	7	16	3	1		
2	B	1	Total	C	N	O	P	S	0	0
			48	21	7	16	3	1		

- Molecule 3 is (R)-3-CARBOXY-2-(HEXANOYLOXY)-N,N,N-TRIMETHYLPROPAN-1-AMINIUM (three-letter code: HC5) (formula: C₁₃H₂₆NO₄).



Mol	Chain	Residues	Atoms				ZeroOcc	AltConf
3	A	1	Total	C	N	O	0	0
			18	13	1	4		

Continued on next page...

Continued from previous page...

Mol	Chain	Residues	Atoms				ZeroOcc	AltConf
3	B	1	Total	C	N	O	0	0
			18	13	1	4		

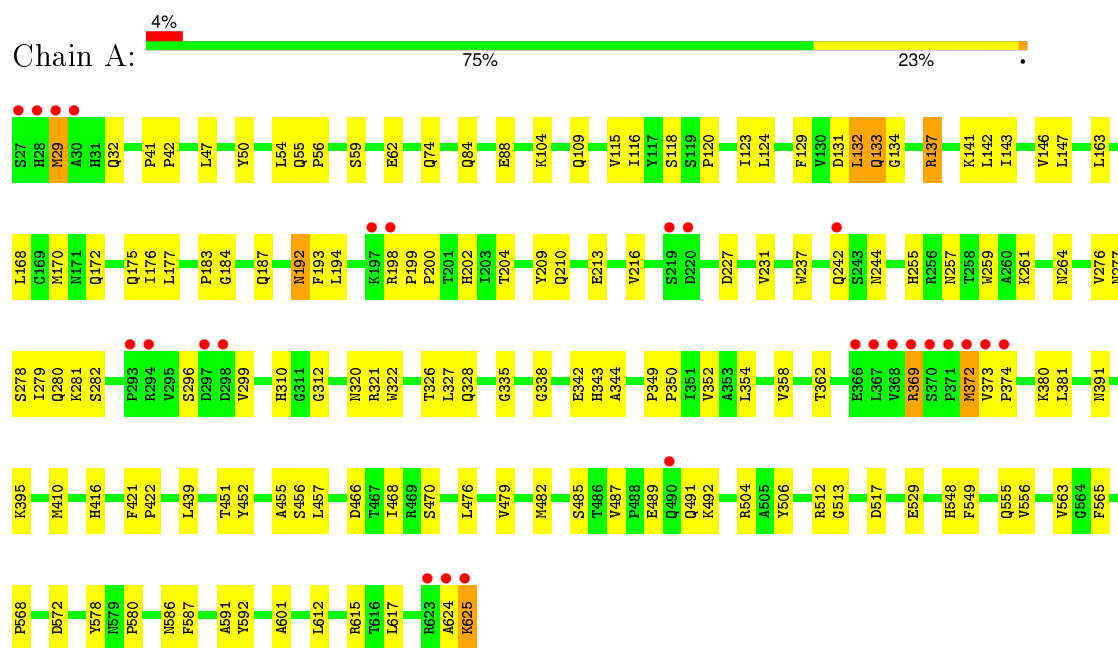
- Molecule 4 is water.

Mol	Chain	Residues	Atoms		ZeroOcc	AltConf
4	A	673	Total	O	0	0
			673	673		
4	B	827	Total	O	0	0
			827	827		

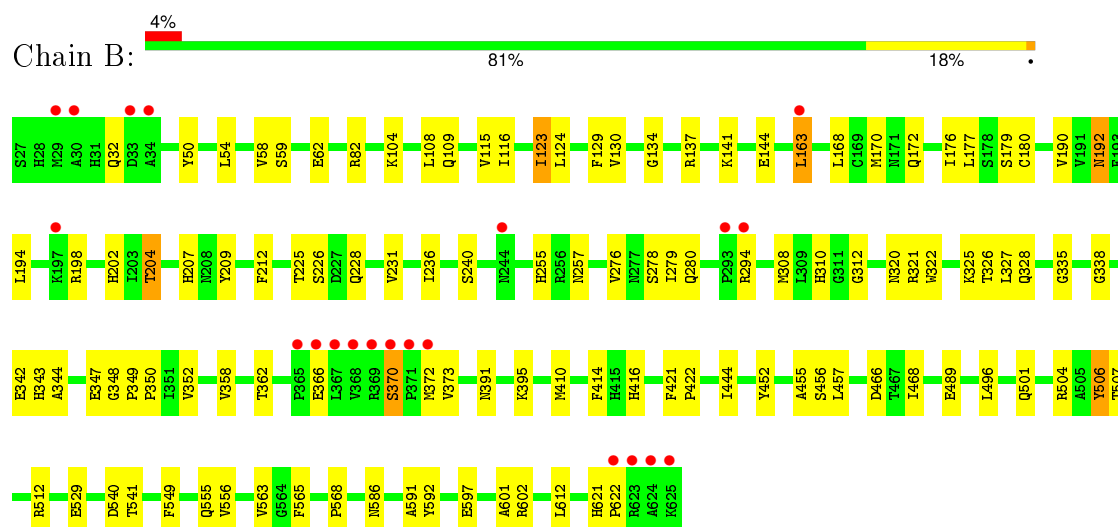
3 Residue-property plots

These plots are drawn for all protein, RNA and DNA chains in the entry. The first graphic for a chain summarises the proportions of errors displayed in the second graphic. The second graphic shows the sequence view annotated by issues in geometry and electron density. Residues are color-coded according to the number of geometric quality criteria for which they contain at least one outlier: green = 0, yellow = 1, orange = 2 and red = 3 or more. A red dot above a residue indicates a poor fit to the electron density ($RSRZ > 2$). Stretches of 2 or more consecutive residues without any outlier are shown as a green connector. Residues present in the sample, but not in the model, are shown in grey.

• Molecule 1: carnitine acetyltransferase



• Molecule 1: carnitine acetyltransferase



4 Data and refinement statistics

Property	Value	Source
Space group	C 1 2 1	Depositor
Cell constants a, b, c, α , β , γ	164.06 Å 89.07 Å 122.78 Å 90.00° 128.97° 90.00°	Depositor
Resolution (Å)	29.91 – 2.10 29.91 – 2.09	Depositor EDS
% Data completeness (in resolution range)	94.3 (29.91-2.10) 93.8 (29.91-2.09)	Depositor EDS
R_{merge}	0.04	Depositor
R_{sym}	(Not available)	Depositor
$\langle I/\sigma(I) \rangle$ ¹	7.43 (at 2.10 Å)	Xtriage
Refinement program	CNS 1.1	Depositor
R, R_{free}	0.177 , 0.219 0.176 , 0.217	Depositor DCC
R_{free} test set	5768 reflections (7.61%)	DCC
Wilson B-factor (Å ²)	17.3	Xtriage
Anisotropy	0.681	Xtriage
Bulk solvent k_{sol} (e/Å ³), B_{sol} (Å ²)	0.33 , 60.0	EDS
Estimated twinning fraction	0.015 for h,-k,-h-l	Xtriage
L-test for twinning ²	$\langle L \rangle = 0.47$, $\langle L^2 \rangle = 0.30$	Xtriage
Outliers	0 of 76084 reflections	Xtriage
F_o, F_c correlation	0.95	EDS
Total number of atoms	11184	wwPDB-VP
Average B, all atoms (Å ²)	23.0	wwPDB-VP

Xtriage's analysis on translational NCS is as follows: *The largest off-origin peak in the Patterson function is 4.24% of the height of the origin peak. No significant pseudotranslation is detected.*

¹Intensities estimated from amplitudes.

²Theoretical values of $\langle |L| \rangle$, $\langle L^2 \rangle$ for acentric reflections are 0.5, 0.375 respectively for untwinned datasets, and 0.333, 0.2 for perfectly twinned datasets.

5 Model quality

5.1 Standard geometry

Bond lengths and bond angles in the following residue types are not validated in this section: COA, HC5

The Z score for a bond length (or angle) is the number of standard deviations the observed value is removed from the expected value. A bond length (or angle) with $|Z| > 5$ is considered an outlier worth inspection. RMSZ is the root-mean-square of all Z scores of the bond lengths (or angles).

Mol	Chain	Bond lengths		Bond angles	
		RMSZ	$\# Z > 5$	RMSZ	$\# Z > 5$
1	A	0.32	0/4892	0.51	0/6627
1	B	0.34	0/4892	0.54	0/6627
All	All	0.33	0/9784	0.52	0/13254

There are no bond length outliers.

There are no bond angle outliers.

There are no chirality outliers.

There are no planarity outliers.

5.2 Too-close contacts

In the following table, the Non-H and H(model) columns list the number of non-hydrogen atoms and hydrogen atoms in the chain respectively. The H(added) column lists the number of hydrogen atoms added and optimized by MolProbity. The Clashes column lists the number of clashes within the asymmetric unit, whereas Symm-Clashes lists symmetry related clashes.

Mol	Chain	Non-H	H(model)	H(added)	Clashes	Symm-Clashes
1	A	4776	0	4748	105	0
1	B	4776	0	4748	94	0
2	A	48	0	32	4	0
2	B	48	0	32	7	0
3	A	18	0	25	7	0
3	B	18	0	25	5	0
4	A	673	0	0	14	0
4	B	827	0	0	22	0
All	All	11184	0	9610	210	0

The all-atom clashscore is defined as the number of clashes found per 1000 atoms (including hydrogen atoms). The all-atom clashscore for this structure is 11.

All (210) close contacts within the same asymmetric unit are listed below, sorted by their clash magnitude.

Atom-1	Atom-2	Interatomic distance (Å)	Clash overlap (Å)
1:B:349:PRO:HD3	2:B:1701:COA:H31	1.56	0.86
1:B:310:HIS:HD2	1:B:312:GLY:H	1.24	0.86
1:A:141:LYS:HD2	1:A:362:THR:HA	1.58	0.85
1:A:457:LEU:HD21	1:A:466:ASP:HB2	1.57	0.85
1:B:325:LYS:HA	4:B:1945:HOH:O	1.77	0.85
1:B:163:LEU:HB2	1:B:168:LEU:HD21	1.62	0.79
1:A:310:HIS:HD2	1:A:312:GLY:H	1.32	0.78
1:A:32:GLN:HE22	1:A:170:MET:H	1.30	0.78
1:B:32:GLN:HE22	1:B:170:MET:H	1.34	0.74
1:B:310:HIS:CD2	1:B:312:GLY:H	2.05	0.74
2:B:1701:COA:H61	4:B:2094:HOH:O	1.86	0.74
1:A:556:VAL:HG11	3:A:1602:HC5:HAE2	1.72	0.72
1:A:349:PRO:HB2	1:A:350:PRO:HD3	1.72	0.71
1:B:372:MET:HB3	4:B:1889:HOH:O	1.91	0.71
1:B:325:LYS:HD2	4:B:1945:HOH:O	1.91	0.70
1:A:321:ARG:HB3	1:A:328:GLN:HE22	1.56	0.68
1:A:556:VAL:CG1	3:A:1602:HC5:HAE2	2.24	0.68
1:B:349:PRO:HB2	1:B:350:PRO:HD3	1.76	0.68
1:B:457:LEU:HD21	1:B:466:ASP:HB2	1.75	0.68
1:A:310:HIS:CD2	1:A:312:GLY:H	2.11	0.67
1:B:555:GLN:HB3	4:B:2094:HOH:O	1.95	0.67
3:A:1602:HC5:CAH	3:A:1602:HC5:HAJ3	2.26	0.66
1:A:349:PRO:HD3	2:A:1601:COA:H31	1.76	0.66
1:A:320:ASN:O	1:A:321:ARG:HG2	1.96	0.66
1:A:242:GLN:NE2	1:A:244:ASN:HB3	2.12	0.65
1:B:421:PHE:HB3	1:B:422:PRO:HD3	1.78	0.64
1:B:231:VAL:HG11	1:B:372:MET:HE1	1.80	0.64
1:B:349:PRO:O	1:B:352:VAL:HG22	1.99	0.62
1:B:180:CYS:HA	4:B:1945:HOH:O	1.99	0.62
1:B:556:VAL:HG21	3:B:1702:HC5:HAE2	1.82	0.61
1:A:555:GLN:NE2	1:A:580:PRO:HG2	2.16	0.60
3:B:1702:HC5:CAH	3:B:1702:HC5:HAJ3	2.32	0.60
1:B:141:LYS:HE3	1:B:362:THR:HA	1.83	0.60
1:A:421:PHE:HB3	1:A:422:PRO:HD3	1.83	0.60
2:B:1701:COA:H131	4:B:2094:HOH:O	1.99	0.60
1:A:210:GLN:HE21	1:A:380:LYS:HE3	1.66	0.60
1:A:410:MET:HG2	1:A:601:ALA:HA	1.82	0.59
1:B:348:GLY:O	1:B:352:VAL:HG13	2.01	0.59
1:A:172:GLN:OE1	1:A:350:PRO:HG2	2.03	0.59
1:A:32:GLN:NE2	1:A:170:MET:H	2.01	0.57

Continued on next page...

Continued from previous page...

Atom-1	Atom-2	Interatomic distance (Å)	Clash overlap (Å)
1:A:204:THR:HG21	1:A:279:ILE:HA	1.86	0.57
2:B:1701:COA:S1P	3:B:1702:HC5:CAH	2.93	0.57
1:A:47:LEU:HD12	1:A:74:GLN:HE21	1.69	0.57
1:B:225:THR:HG21	1:B:370:SER:OG	2.04	0.57
1:A:322:TRP:H	1:A:328:GLN:NE2	2.03	0.56
1:A:555:GLN:HE21	1:A:580:PRO:HG2	1.70	0.56
1:A:131:ASP:OD1	1:A:133:GLN:HG3	2.06	0.56
1:B:456:SER:HB2	2:B:1701:COA:H71	1.88	0.55
1:A:482:MET:HA	1:A:492:LYS:HD3	1.88	0.55
1:B:177:LEU:HD23	1:B:327:LEU:HD12	1.88	0.55
1:A:133:GLN:O	1:A:137:ARG:HB2	2.06	0.55
1:A:255:HIS:CD2	1:A:257:ASN:H	2.25	0.55
1:B:501:GLN:HG2	4:B:2135:HOH:O	2.07	0.55
1:A:255:HIS:HD2	1:A:257:ASN:H	1.54	0.55
1:A:192:ASN:ND2	1:A:194:LEU:H	2.05	0.55
1:A:115:VAL:HG12	1:A:116:ILE:HG13	1.87	0.55
1:A:321:ARG:HH11	1:A:321:ARG:HG2	1.71	0.54
1:A:455:ALA:HB2	1:A:468:ILE:HG13	1.90	0.54
1:B:372:MET:HG3	1:B:373:VAL:N	2.22	0.54
1:B:50:TYR:CZ	1:B:54:LEU:HD11	2.42	0.54
1:A:512:ARG:HH11	1:A:512:ARG:HG3	1.72	0.54
1:A:104:LYS:HG2	1:A:109:GLN:HG3	1.89	0.54
1:B:556:VAL:HB	4:B:2108:HOH:O	2.07	0.53
1:A:175:GLN:HG3	4:A:2247:HOH:O	2.08	0.53
1:B:457:LEU:HD21	1:B:466:ASP:CB	2.39	0.53
1:A:124:LEU:HG	1:A:338:GLY:HA2	1.91	0.53
1:B:207:HIS:HD2	1:B:240:SER:OG	1.91	0.53
1:A:204:THR:HG23	1:A:282:SER:HB3	1.91	0.52
1:B:563:VAL:HB	1:B:586:ASN:HB3	1.90	0.52
1:B:504:ARG:HD2	4:B:1862:HOH:O	2.09	0.52
1:B:225:THR:H	1:B:228:GLN:NE2	2.08	0.52
2:A:1601:COA:S1P	3:A:1602:HC5:CAH	2.97	0.51
1:A:202:HIS:HD2	4:A:1737:HOH:O	1.92	0.51
1:B:129:PHE:CZ	1:B:335:GLY:HA2	2.45	0.51
1:A:50:TYR:CZ	1:A:54:LEU:HD11	2.46	0.51
1:A:568:PRO:HD2	1:A:592:TYR:CZ	2.46	0.51
1:B:255:HIS:HD2	1:B:257:ASN:H	1.59	0.50
1:A:147:LEU:HD11	1:A:216:VAL:HB	1.93	0.50
1:B:192:ASN:ND2	1:B:194:LEU:H	2.10	0.50
1:B:416:HIS:CG	1:B:612:LEU:HD21	2.47	0.50
1:B:144:GLU:OE1	1:B:226:SER:HB3	2.13	0.49

Continued on next page...

Continued from previous page...

Atom-1	Atom-2	Interatomic distance (Å)	Clash overlap (Å)
1:B:179:SER:O	4:B:1945:HOH:O	2.19	0.49
1:B:310:HIS:HE1	4:B:2039:HOH:O	1.95	0.49
1:B:123:ILE:HB	1:B:565:PHE:HE2	1.78	0.49
1:B:529:GLU:HG2	4:B:1817:HOH:O	2.11	0.49
1:A:129:PHE:CZ	1:A:335:GLY:HA2	2.47	0.49
1:B:192:ASN:HD22	1:B:194:LEU:H	1.59	0.49
1:A:231:VAL:HG21	1:A:372:MET:SD	2.52	0.49
1:A:261:LYS:HD2	4:A:2188:HOH:O	2.12	0.49
1:A:457:LEU:HD21	1:A:466:ASP:CB	2.36	0.49
1:A:456:SER:HB2	2:A:1601:COA:H71	1.94	0.49
1:B:190:VAL:HG11	4:B:2273:HOH:O	2.12	0.49
1:B:129:PHE:HB2	1:B:134:GLY:HA3	1.95	0.48
1:B:366:GLU:HA	4:B:2150:HOH:O	2.12	0.48
1:B:192:ASN:C	1:B:192:ASN:HD22	2.17	0.48
1:B:444:ILE:HG23	1:B:602:ARG:NH1	2.29	0.48
1:B:172:GLN:OE1	1:B:350:PRO:HG2	2.13	0.48
1:A:47:LEU:HD12	1:A:74:GLN:NE2	2.28	0.48
1:A:391:ASN:O	1:A:395:LYS:HG2	2.14	0.48
1:A:192:ASN:HD22	1:A:193:PHE:N	2.12	0.48
1:B:347:GLU:HG3	4:B:1755:HOH:O	2.14	0.48
1:B:124:LEU:HG	1:B:338:GLY:HA2	1.95	0.47
1:B:444:ILE:HG23	1:B:602:ARG:HH12	1.78	0.47
1:B:202:HIS:HE1	1:B:278:SER:O	1.97	0.47
1:A:264:ASN:HB2	4:A:1738:HOH:O	2.14	0.47
1:B:204:THR:HG21	1:B:279:ILE:HA	1.95	0.47
1:A:322:TRP:H	1:A:328:GLN:HE22	1.61	0.47
1:A:276:VAL:O	1:A:280:GLN:HG3	2.14	0.47
1:A:59:SER:OG	1:A:62:GLU:HG3	2.14	0.47
2:A:1601:COA:S1P	3:A:1602:HC5:HAQ1	2.55	0.47
1:B:322:TRP:H	1:B:328:GLN:NE2	2.12	0.47
1:A:578:TYR:HB3	1:A:587:PHE:CD1	2.50	0.47
1:A:487:VAL:HB	1:A:492:LYS:NZ	2.30	0.47
1:A:183:PRO:HG3	1:A:259:TRP:NE1	2.30	0.47
1:A:369:ARG:HD3	4:A:1853:HOH:O	2.15	0.47
1:A:163:LEU:HB2	1:A:168:LEU:HD11	1.97	0.47
1:A:177:LEU:HD23	1:A:327:LEU:HD12	1.96	0.46
1:A:296:SER:HB3	1:A:299:VAL:HG22	1.97	0.46
1:A:342:GLU:OE1	1:A:344:ALA:HB3	2.16	0.46
1:B:130:VAL:HA	4:B:1808:HOH:O	2.15	0.46
1:A:452:TYR:HB2	1:A:549:PHE:CD1	2.51	0.46
1:B:225:THR:HG21	1:B:370:SER:HG	1.80	0.46

Continued on next page...

Continued from previous page...

Atom-1	Atom-2	Interatomic distance (Å)	Clash overlap (Å)
1:B:512:ARG:HG3	1:B:512:ARG:HH11	1.81	0.46
1:A:416:HIS:CG	1:A:612:LEU:HD21	2.51	0.46
1:A:133:GLN:HB2	4:A:2026:HOH:O	2.15	0.45
1:A:176:ILE:HA	1:A:326:THR:HG21	1.98	0.45
1:A:132:LEU:HD21	1:A:237:TRP:CZ2	2.51	0.45
1:A:41:PRO:HG3	1:A:513:GLY:O	2.16	0.45
1:A:213:GLU:HB2	1:A:381:LEU:HD21	1.98	0.45
1:B:176:ILE:HA	1:B:326:THR:HG21	1.98	0.45
1:A:529:GLU:HG2	4:A:1676:HOH:O	2.15	0.45
1:A:277:ASN:HD21	1:A:281:LYS:HE3	1.81	0.45
1:B:54:LEU:O	1:B:58:VAL:HG22	2.17	0.45
1:A:556:VAL:O	1:A:556:VAL:HG23	2.16	0.45
1:B:342:GLU:OE1	1:B:344:ALA:HB3	2.17	0.45
3:B:1702:HC5:HAJ3	3:B:1702:HC5:OAK	2.17	0.44
1:B:326:THR:N	4:B:1945:HOH:O	2.37	0.44
1:B:452:TYR:HB2	1:B:549:PHE:CD1	2.52	0.44
1:B:489:GLU:HB3	1:B:621:HIS:NE2	2.32	0.44
1:B:59:SER:OG	1:B:62:GLU:HG3	2.18	0.44
1:B:104:LYS:HB2	4:B:2470:HOH:O	2.16	0.44
1:B:410:MET:HG2	1:B:601:ALA:HA	1.98	0.44
1:A:512:ARG:NH1	1:A:512:ARG:HG3	2.32	0.44
1:B:198:ARG:HG3	1:B:198:ARG:O	2.17	0.44
1:A:202:HIS:HE1	1:A:278:SER:O	2.00	0.44
1:B:391:ASN:O	1:B:395:LYS:HG2	2.17	0.44
1:B:352:VAL:HG11	1:B:556:VAL:HG13	2.00	0.44
1:A:192:ASN:HD22	1:A:192:ASN:C	2.20	0.44
1:B:115:VAL:HG12	1:B:116:ILE:HG13	2.00	0.44
1:A:548:HIS:HE1	1:A:572:ASP:OD1	2.01	0.44
1:B:255:HIS:CD2	1:B:257:ASN:H	2.35	0.43
1:B:104:LYS:HG2	1:B:109:GLN:HG3	1.99	0.43
1:B:320:ASN:C	1:B:321:ARG:HG2	2.39	0.43
1:B:255:HIS:HD2	1:B:257:ASN:HB2	1.84	0.43
1:B:104:LYS:HA	1:B:108:LEU:HB2	1.99	0.43
1:B:414:PHE:CE2	1:B:416:HIS:HB2	2.54	0.43
1:A:142:LEU:O	1:A:146:VAL:HG23	2.18	0.43
1:A:227:ASP:O	1:A:231:VAL:HG23	2.19	0.43
1:A:123:ILE:HG13	1:A:565:PHE:CE2	2.54	0.43
1:A:421:PHE:CZ	1:A:615:ARG:HG3	2.54	0.43
3:A:1602:HC5:HAJ3	3:A:1602:HC5:OAK	2.18	0.43
1:B:276:VAL:O	1:B:280:GLN:HG3	2.19	0.43
1:A:625:LYS:NZ	1:A:625:LYS:HB2	2.33	0.43

Continued on next page...

Continued from previous page...

Atom-1	Atom-2	Interatomic distance (Å)	Clash overlap (Å)
1:A:374:PRO:HD3	4:A:2184:HOH:O	2.17	0.43
1:A:568:PRO:HG2	1:A:591:ALA:HA	2.01	0.43
1:B:123:ILE:HD13	1:B:124:LEU:N	2.34	0.43
1:B:294:ARG:HD2	4:B:1963:HOH:O	2.18	0.43
1:A:373:VAL:HA	4:A:2184:HOH:O	2.19	0.42
1:A:625:LYS:HD3	1:A:625:LYS:N	2.34	0.42
1:B:507:THR:HG23	2:B:1701:COA:H143	2.00	0.42
1:B:123:ILE:HD13	1:B:124:LEU:O	2.19	0.42
2:B:1701:COA:S1P	3:B:1702:HC5:HAQ1	2.59	0.42
1:A:476:LEU:HA	1:A:479:VAL:HG22	2.02	0.42
1:B:622:PRO:HA	4:B:2514:HOH:O	2.19	0.42
1:B:540:ASP:OD2	1:B:541:THR:N	2.53	0.42
1:A:129:PHE:HB2	1:A:134:GLY:HA3	2.02	0.42
1:A:439:LEU:HA	1:A:479:VAL:HG12	2.02	0.42
1:B:621:HIS:N	1:B:622:PRO:HD3	2.35	0.42
1:A:84:GLN:O	1:A:88:GLU:HG3	2.20	0.42
1:A:55:GLN:N	1:A:56:PRO:HD2	2.35	0.42
1:A:320:ASN:C	1:A:321:ARG:HG2	2.39	0.42
1:A:184:GLY:HA3	1:A:187:GLN:O	2.20	0.42
1:A:457:LEU:CD2	1:A:466:ASP:HB2	2.39	0.41
1:B:506:TYR:HD2	1:B:506:TYR:O	2.03	0.41
1:B:568:PRO:HD2	1:B:592:TYR:CZ	2.55	0.41
1:B:255:HIS:CD2	1:B:257:ASN:HB2	2.55	0.41
3:A:1602:HC5:HAJ2	4:A:1663:HOH:O	2.20	0.41
1:A:487:VAL:HA	4:A:1721:HOH:O	2.19	0.41
1:B:496:LEU:HD23	1:B:496:LEU:C	2.41	0.41
1:A:349:PRO:HA	1:A:352:VAL:HG22	2.02	0.41
1:A:143:ILE:O	1:A:147:LEU:HG	2.21	0.41
1:B:568:PRO:HG2	1:B:591:ALA:HA	2.02	0.41
1:A:199:PRO:HA	1:A:200:PRO:HD3	1.87	0.41
1:A:209:TYR:CD2	1:A:209:TYR:N	2.88	0.41
1:B:82:ARG:HD2	4:B:2529:HOH:O	2.20	0.41
1:B:322:TRP:H	1:B:328:GLN:HE22	1.69	0.41
1:A:118:SER:O	1:A:120:PRO:HD3	2.21	0.41
1:A:489:GLU:O	1:A:617:LEU:HD11	2.21	0.41
1:A:504:ARG:HD2	4:A:1735:HOH:O	2.20	0.41
1:A:354:LEU:O	1:A:358:VAL:HG23	2.21	0.41
1:B:455:ALA:HB2	1:B:468:ILE:HG13	2.03	0.41
1:B:104:LYS:HG2	1:B:109:GLN:CD	2.40	0.40
1:A:491:GLN:HB2	4:A:2143:HOH:O	2.21	0.40
1:A:563:VAL:HB	1:A:586:ASN:HB3	2.01	0.40

Continued on next page...

Continued from previous page...

Atom-1	Atom-2	Interatomic distance (Å)	Clash overlap (Å)
1:A:451:THR:HG21	1:A:470:SER:HB2	2.03	0.40
1:A:41:PRO:HA	1:A:42:PRO:HD3	1.98	0.40
1:A:485:SER:HA	4:A:2052:HOH:O	2.21	0.40
1:B:358:VAL:O	1:B:362:THR:HG23	2.22	0.40
1:B:212:PHE:CD1	1:B:236:ILE:HG23	2.56	0.40
1:B:209:TYR:N	1:B:209:TYR:CD2	2.89	0.40

There are no symmetry-related clashes.

5.3 Torsion angles [i](#)

5.3.1 Protein backbone [i](#)

In the following table, the Percentiles column shows the percent Ramachandran outliers of the chain as a percentile score with respect to all X-ray entries followed by that with respect to entries of similar resolution.

The Analysed column shows the number of residues for which the backbone conformation was analysed, and the total number of residues.

Mol	Chain	Analysed	Favoured	Allowed	Outliers	Percentiles	
1	A	597/599 (100%)	571 (96%)	24 (4%)	2 (0%)	46	45
1	B	597/599 (100%)	577 (97%)	20 (3%)	0	100	100
All	All	1194/1198 (100%)	1148 (96%)	44 (4%)	2 (0%)	52	53

All (2) Ramachandran outliers are listed below:

Mol	Chain	Res	Type
1	A	29	MET
1	A	624	ALA

5.3.2 Protein sidechains [i](#)

In the following table, the Percentiles column shows the percent sidechain outliers of the chain as a percentile score with respect to all X-ray entries followed by that with respect to entries of similar resolution.

The Analysed column shows the number of residues for which the sidechain conformation was analysed, and the total number of residues.

Mol	Chain	Analysed	Rotameric	Outliers	Percentiles	
1	A	525/525 (100%)	513 (98%)	12 (2%)	58	62
1	B	525/525 (100%)	515 (98%)	10 (2%)	65	70
All	All	1050/1050 (100%)	1028 (98%)	22 (2%)	61	66

All (22) residues with a non-rotameric sidechain are listed below:

Mol	Chain	Res	Type
1	A	29	MET
1	A	132	LEU
1	A	133	GLN
1	A	137	ARG
1	A	192	ASN
1	A	198	ARG
1	A	343	HIS
1	A	369	ARG
1	A	372	MET
1	A	506	TYR
1	A	517	ASP
1	A	625	LYS
1	B	123	ILE
1	B	137	ARG
1	B	163	LEU
1	B	192	ASN
1	B	204	THR
1	B	308	MET
1	B	343	HIS
1	B	370	SER
1	B	506	TYR
1	B	597	GLU

Some sidechains can be flipped to improve hydrogen bonding and reduce clashes. All (42) such sidechains are listed below:

Mol	Chain	Res	Type
1	A	32	GLN
1	A	55	GLN
1	A	74	GLN
1	A	84	GLN
1	A	135	GLN
1	A	155	ASN
1	A	192	ASN
1	A	202	HIS

Continued on next page...

Continued from previous page...

Mol	Chain	Res	Type
1	A	207	HIS
1	A	210	GLN
1	A	242	GLN
1	A	255	HIS
1	A	307	GLN
1	A	310	HIS
1	A	328	GLN
1	A	461	HIS
1	A	501	GLN
1	A	548	HIS
1	A	586	ASN
1	A	619	GLN
1	A	620	ASN
1	B	32	GLN
1	B	65	HIS
1	B	74	GLN
1	B	84	GLN
1	B	135	GLN
1	B	192	ASN
1	B	202	HIS
1	B	207	HIS
1	B	210	GLN
1	B	228	GLN
1	B	255	HIS
1	B	307	GLN
1	B	310	HIS
1	B	328	GLN
1	B	357	HIS
1	B	461	HIS
1	B	548	HIS
1	B	550	ASN
1	B	586	ASN
1	B	619	GLN
1	B	620	ASN

5.3.3 RNA ⓘ

There are no RNA molecules in this entry.

5.4 Non-standard residues in protein, DNA, RNA chains ⓘ

There are no non-standard protein/DNA/RNA residues in this entry.

5.5 Carbohydrates

There are no carbohydrates in this entry.

5.6 Ligand geometry

4 ligands are modelled in this entry.

In the following table, the Counts columns list the number of bonds (or angles) for which Mogul statistics could be retrieved, the number of bonds (or angles) that are observed in the model and the number of bonds (or angles) that are defined in the chemical component dictionary. The Link column lists molecule types, if any, to which the group is linked. The Z score for a bond length (or angle) is the number of standard deviations the observed value is removed from the expected value. A bond length (or angle) with $|Z| > 2$ is considered an outlier worth inspection. RMSZ is the root-mean-square of all Z scores of the bond lengths (or angles).

Mol	Type	Chain	Res	Link	Bond lengths			Bond angles		
					Counts	RMSZ	# $ Z > 2$	Counts	RMSZ	# $ Z > 2$
2	COA	A	1601	-	40,50,50	1.13	2 (5%)	50,75,75	1.90	5 (10%)
3	HC5	A	1602	-	14,17,17	0.90	1 (7%)	18,22,22	1.28	2 (11%)
2	COA	B	1701	-	40,50,50	1.16	2 (5%)	50,75,75	1.89	4 (8%)
3	HC5	B	1702	-	14,17,17	0.82	0	18,22,22	1.27	2 (11%)

In the following table, the Chirals column lists the number of chiral outliers, the number of chiral centers analysed, the number of these observed in the model and the number defined in the chemical component dictionary. Similar counts are reported in the Torsion and Rings columns. '-' means no outliers of that kind were identified.

Mol	Type	Chain	Res	Link	Chirals	Torsions	Rings
2	COA	A	1601	-	-	0/44/64/64	0/3/3/3
3	HC5	A	1602	-	-	0/16/18/18	0/0/0/0
2	COA	B	1701	-	-	0/44/64/64	0/3/3/3
3	HC5	B	1702	-	-	0/16/18/18	0/0/0/0

All (5) bond length outliers are listed below:

Mol	Chain	Res	Type	Atoms	Z	Observed(Å)	Ideal(Å)
3	A	1602	HC5	CAO-NAN	-2.36	1.47	1.51
2	A	1601	COA	P3B-O7A	2.97	1.60	1.51
2	B	1701	COA	P3B-O7A	2.98	1.61	1.51
2	A	1601	COA	O4B-C1B	3.67	1.45	1.41
2	B	1701	COA	O4B-C1B	3.92	1.46	1.41

All (13) bond angle outliers are listed below:

Mol	Chain	Res	Type	Atoms	Z	Observed(°)	Ideal(°)
2	A	1601	COA	N3A-C2A-N1A	-11.07	120.42	128.89
2	B	1701	COA	N3A-C2A-N1A	-10.97	120.50	128.89
2	B	1701	COA	P2A-O3A-P1A	-4.04	121.39	132.73
2	A	1601	COA	P2A-O3A-P1A	-3.94	121.66	132.73
3	A	1602	HC5	CAP-OAK-CAH	-2.64	111.55	117.89
3	B	1702	HC5	CAP-OAK-CAH	-2.31	112.35	117.89
2	A	1601	COA	O3B-P3B-O7A	-2.00	102.11	107.11
2	A	1601	COA	O4B-C1B-N9A	2.53	113.39	108.10
2	B	1701	COA	O4B-C1B-N9A	2.69	113.73	108.10
2	B	1701	COA	O9A-P3B-O8A	3.06	119.05	107.38
2	A	1601	COA	O9A-P3B-O8A	3.08	119.12	107.38
3	A	1602	HC5	OAK-CAH-CAG	3.75	119.67	111.53
3	B	1702	HC5	OAK-CAH-CAG	3.93	120.07	111.53

There are no chirality outliers.

There are no torsion outliers.

There are no ring outliers.

4 monomers are involved in 19 short contacts:

Mol	Chain	Res	Type	Clashes	Symm-Clashes
2	A	1601	COA	4	0
3	A	1602	HC5	7	0
2	B	1701	COA	7	0
3	B	1702	HC5	5	0

5.7 Other polymers [i](#)

There are no such residues in this entry.

5.8 Polymer linkage issues [i](#)

There are no chain breaks in this entry.

6 Fit of model and data ⓘ

6.1 Protein, DNA and RNA chains ⓘ

In the following table, the column labelled ‘#RSRZ> 2’ contains the number (and percentage) of RSRZ outliers, followed by percent RSRZ outliers for the chain as percentile scores relative to all X-ray entries and entries of similar resolution. The OWAB column contains the minimum, median, 95th percentile and maximum values of the occupancy-weighted average B-factor per residue. The column labelled ‘Q< 0.9’ lists the number of (and percentage) of residues with an average occupancy less than 0.9.

Mol	Chain	Analysed	<RSRZ>	#RSRZ>2		OWAB(Å ²)	Q<0.9
1	A	599/599 (100%)	-0.02	26 (4%)	39 48	9, 21, 45, 73	0
1	B	599/599 (100%)	-0.24	21 (3%)	48 57	7, 16, 36, 71	0
All	All	1198/1198 (100%)	-0.13	47 (3%)	43 52	7, 18, 40, 73	0

All (47) RSRZ outliers are listed below:

Mol	Chain	Res	Type	RSRZ
1	B	367	LEU	13.9
1	A	368	VAL	13.6
1	B	368	VAL	10.7
1	B	370	SER	10.1
1	A	624	ALA	9.5
1	B	624	ALA	7.7
1	A	367	LEU	7.6
1	A	370	SER	7.3
1	A	625	LYS	6.8
1	A	371	PRO	6.7
1	B	369	ARG	6.7
1	A	369	ARG	5.8
1	A	373	VAL	5.6
1	B	29	MET	4.9
1	A	27	SER	4.8
1	A	374	PRO	4.7
1	A	29	MET	4.6
1	B	623	ARG	4.6
1	B	365	PRO	4.1
1	A	372	MET	4.0
1	B	294	ARG	4.0
1	B	625	LYS	3.9
1	A	198	ARG	3.8
1	B	371	PRO	3.8

Continued on next page...

Continued from previous page...

Mol	Chain	Res	Type	RSRZ
1	A	623	ARG	3.5
1	B	366	GLU	3.5
1	A	197	LYS	3.2
1	A	28	HIS	3.0
1	B	33	ASP	2.9
1	B	244	ASN	2.9
1	A	220	ASP	2.9
1	A	30	ALA	2.9
1	B	622	PRO	2.8
1	B	163	LEU	2.8
1	A	293	PRO	2.7
1	A	219	SER	2.7
1	A	366	GLU	2.7
1	A	490	GLN	2.6
1	A	297	ASP	2.4
1	B	197	LYS	2.4
1	A	298	ASP	2.3
1	A	294	ARG	2.3
1	A	242	GLN	2.2
1	B	30	ALA	2.1
1	B	34	ALA	2.1
1	B	293	PRO	2.1
1	B	372	MET	2.0

6.2 Non-standard residues in protein, DNA, RNA chains [i](#)

There are no non-standard protein/DNA/RNA residues in this entry.

6.3 Carbohydrates [i](#)

There are no carbohydrates in this entry.

6.4 Ligands [i](#)

In the following table, the Atoms column lists the number of modelled atoms in the group and the number defined in the chemical component dictionary. LLDF column lists the quality of electron density of the group with respect to its neighbouring residues in protein, DNA or RNA chains. The B-factors column lists the minimum, median, 95th percentile and maximum values of B factors of atoms in the group. The column labelled 'Q< 0.9' lists the number of atoms with occupancy less than 0.9.

Mol	Type	Chain	Res	Atoms	RSCC	RSR	LLDF	B-factors(\AA^2)	Q<0.9
3	HC5	A	1602	18/18	0.88	0.18	2.35	16,22,34,37	0
3	HC5	B	1702	18/18	0.92	0.16	1.89	14,19,30,31	0
2	COA	A	1601	48/48	0.89	0.17	1.66	28,35,44,49	0
2	COA	B	1701	48/48	0.86	0.17	1.48	29,34,46,55	0

6.5 Other polymers [i](#)

There are no such residues in this entry.