



# Full wwPDB X-ray Structure Validation Report ⓘ

Jan 31, 2016 – 07:46 PM GMT

PDB ID : 1H4J  
Title : METHYLOBACTERIUM EXTORQUENS METHANOL DEHYDROGENASE D303E MUTANT  
Authors : Mohammed, F.; Gill, R.; Thompson, D.; Cooper, J.B.; Wood, S.P.; Afolabi, P.R.; Anthony, C.  
Deposited on : 2001-05-11  
Resolution : 3.00 Å(reported)

This is a Full wwPDB X-ray Structure Validation Report for a publicly released PDB entry.  
We welcome your comments at [validation@mail.wwpdb.org](mailto:validation@mail.wwpdb.org)  
A user guide is available at  
<http://wwpdb.org/validation/2016/XrayValidationReportHelp>  
with specific help available everywhere you see the ⓘ symbol.

---

The following versions of software and data (see [references ⓘ](#)) were used in the production of this report:

MolProbity : 4.02b-467  
Mogul : 1.7 (RC4), CSD as536be (2015)  
Xtriage (Phenix) : 1.9-1692  
EDS : rb-20026688  
Percentile statistics : 20151230.v01 (using entries in the PDB archive December 30th 2015)  
Refmac : 5.8.0135  
CCP4 : 6.5.0  
Ideal geometry (proteins) : Engh & Huber (2001)  
Ideal geometry (DNA, RNA) : Parkinson et al. (1996)  
Validation Pipeline (wwPDB-VP) : trunk26865

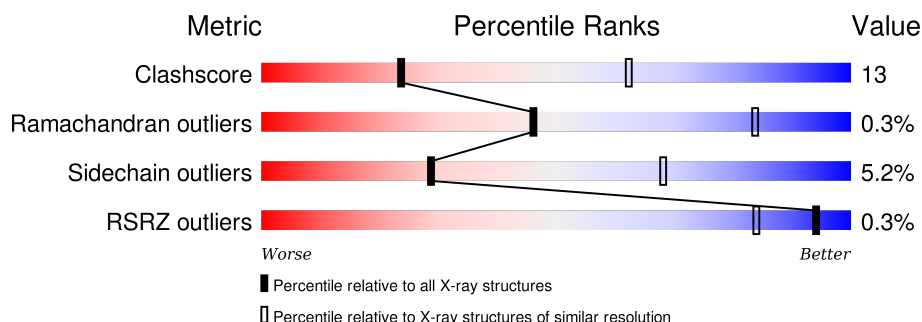
# 1 Overall quality at a glance

The following experimental techniques were used to determine the structure:

*X-RAY DIFFRACTION*

The reported resolution of this entry is 3.00 Å.

Percentile scores (ranging between 0-100) for global validation metrics of the entry are shown in the following graphic. The table shows the number of entries on which the scores are based.



Metric	Whole archive (#Entries)	Similar resolution (#Entries, resolution range(Å))
Clashscore	102246	1912 (3.00-3.00)
Ramachandran outliers	100387	1853 (3.00-3.00)
Sidechain outliers	100360	1856 (3.00-3.00)
RSRZ outliers	91569	1592 (3.00-3.00)

The table below summarises the geometric issues observed across the polymeric chains and their fit to the electron density. The red, orange, yellow and green segments on the lower bar indicate the fraction of residues that contain outliers for  $\geq 3$ , 2, 1 and 0 types of geometric quality criteria. A grey segment represents the fraction of residues that are not modelled. The numeric value for each fraction is indicated below the corresponding segment, with a dot representing fractions  $\leq 5\%$ . The upper red bar (where present) indicates the fraction of residues that have poor fit to the electron density. The numeric value is given above the bar.

Mol	Chain	Length	Quality of chain
1	A	599	
1	C	599	
1	E	599	
1	G	599	
2	B	74	
2	D	74	
2	F	74	

Continued on next page...

Continued from previous page...

Mol	Chain	Length	Quality of chain
2	H	74	<div><div></div><div>3%</div><div>77%</div><div>18%</div><div></div><div></div></div>

## 2 Entry composition

There are 4 unique types of molecules in this entry. The entry contains 20908 atoms, of which 0 are hydrogens and 0 are deuteriums.

In the tables below, the ZeroOcc column contains the number of atoms modelled with zero occupancy, the AltConf column contains the number of residues with at least one atom in alternate conformation and the Trace column contains the number of residues modelled with at most 2 atoms.

- Molecule 1 is a protein called METHANOL DEHYDROGENASE SUBUNIT 1.

Mol	Chain	Residues	Atoms					ZeroOcc	AltConf	Trace
1	A	595	Total	C	N	O	S	60	0	0
			4621	2948	778	875	20			
1	C	595	Total	C	N	O	S	60	0	0
			4621	2948	778	875	20			
1	E	595	Total	C	N	O	S	60	0	0
			4621	2948	778	875	20			
1	G	595	Total	C	N	O	S	60	0	0
			4621	2948	778	875	20			

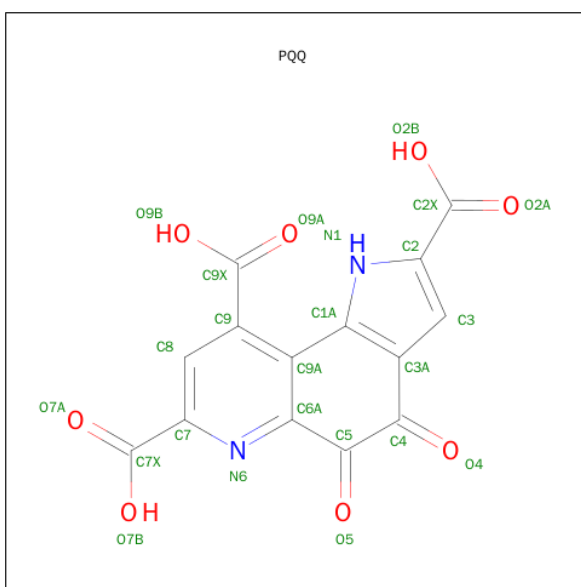
There are 4 discrepancies between the modelled and reference sequences:

Chain	Residue	Modelled	Actual	Comment	Reference
A	303	GLU	ASP	ENGINEERED MUTATION	UNP P16027
C	303	GLU	ASP	ENGINEERED MUTATION	UNP P16027
E	303	GLU	ASP	ENGINEERED MUTATION	UNP P16027
G	303	GLU	ASP	ENGINEERED MUTATION	UNP P16027

- Molecule 2 is a protein called METHANOL DEHYDROGENASE SUBUNIT 2.

Mol	Chain	Residues	Atoms					ZeroOcc	AltConf	Trace
2	B	72	Total	C	N	O	S	32	0	0
			581	366	102	110	3			
2	D	72	Total	C	N	O	S	32	0	0
			581	366	102	110	3			
2	F	72	Total	C	N	O	S	32	0	0
			581	366	102	110	3			
2	H	72	Total	C	N	O	S	32	0	0
			581	366	102	110	3			

- Molecule 3 is PYRROLOQUINOLINE QUINONE (three-letter code: PQQ) (formula: C<sub>14</sub>H<sub>6</sub>N<sub>2</sub>O<sub>8</sub>).

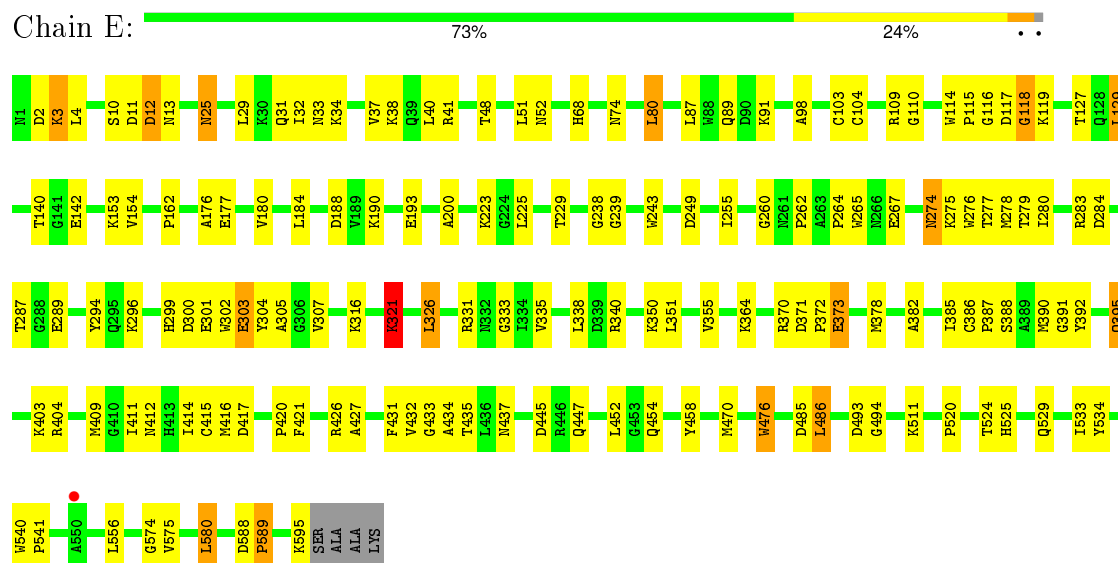


Mol	Chain	Residues	Atoms				ZeroOcc	AltConf
3	A	1	Total	C	N	O	0	0
			24	14	2	8		
3	C	1	Total	C	N	O	0	0
			24	14	2	8		
3	E	1	Total	C	N	O	0	0
			24	14	2	8		
3	G	1	Total	C	N	O	0	0
			24	14	2	8		

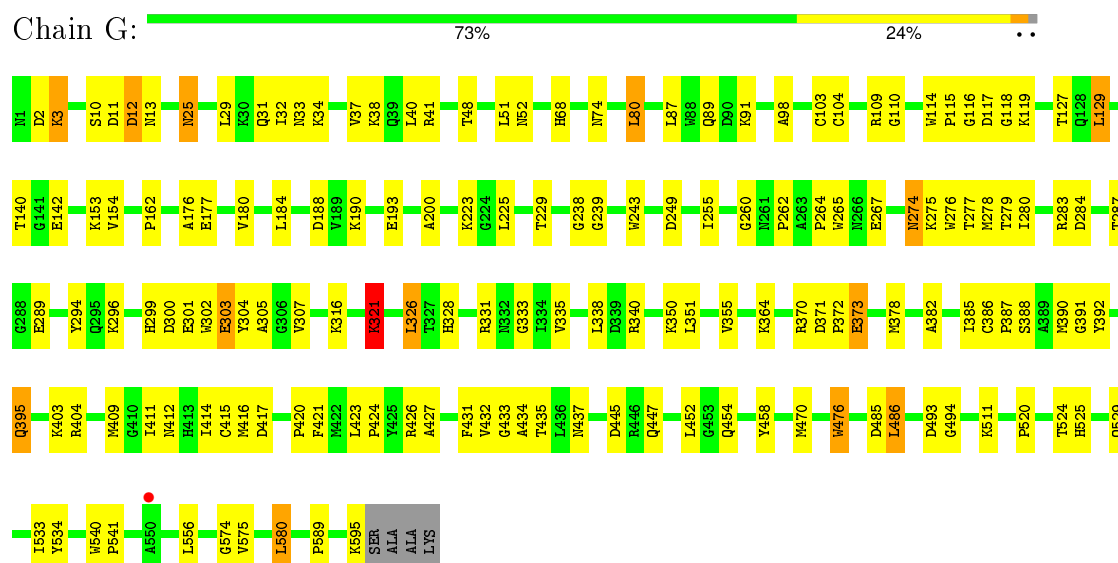
- Molecule 4 is CALCIUM ION (three-letter code: CA) (formula: Ca).

Mol	Chain	Residues	Atoms		ZeroOcc	AltConf
4	G	1	Total	Ca	0	0
			1	1		
4	A	1	Total	Ca	0	0
			1	1		
4	C	1	Total	Ca	0	0
			1	1		
4	E	1	Total	Ca	0	0
			1	1		

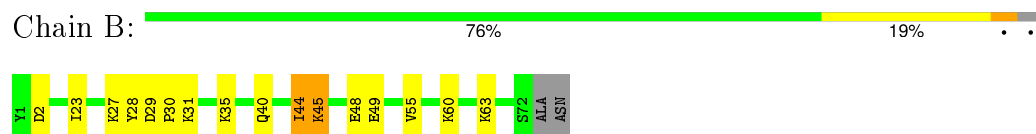




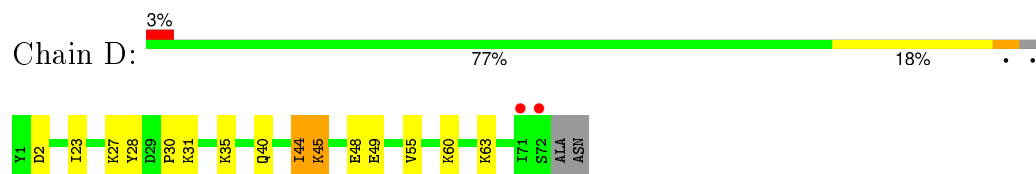
• Molecule 1: METHANOL DEHYDROGENASE SUBUNIT 1



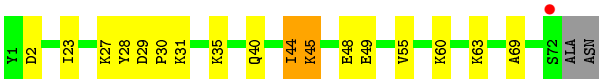
• Molecule 2: METHANOL DEHYDROGENASE SUBUNIT 2



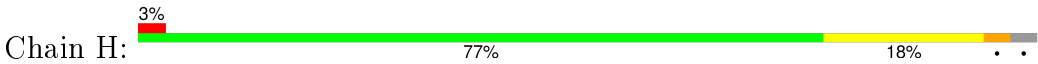
• Molecule 2: METHANOL DEHYDROGENASE SUBUNIT 2



• Molecule 2: METHANOL DEHYDROGENASE SUBUNIT 2



● Molecule 2: METHANOL DEHYDROGENASE SUBUNIT 2





## 4 Data and refinement statistics

Property	Value	Source
Space group	P 1 21 1	Depositor
Cell constants a, b, c, $\alpha$ , $\beta$ , $\gamma$	101.85Å 61.02Å 212.68Å 90.00° 92.83° 90.00°	Depositor
Resolution (Å)	20.00 – 3.00 29.32 – 3.00	Depositor EDS
% Data completeness (in resolution range)	91.5 (20.00-3.00) 91.3 (29.32-3.00)	Depositor EDS
$R_{merge}$	0.09	Depositor
$R_{sym}$	(Not available)	Depositor
$\langle I/\sigma(I) \rangle$ <sup>1</sup>	4.65 (at 3.00Å)	Xtriage
Refinement program	X-PLOR	Depositor
R, $R_{free}$	0.187 , 0.217 0.206 , (Not available)	Depositor DCC
$R_{free}$ test set	No test flags present.	DCC
Wilson B-factor (Å <sup>2</sup> )	30.6	Xtriage
Anisotropy	0.238	Xtriage
Bulk solvent $k_{sol}$ (e/Å <sup>3</sup> ), $B_{sol}$ (Å <sup>2</sup> )	0.29 , 23.1	EDS
Estimated twinning fraction	0.013 for h,-k,-l	Xtriage
L-test for twinning <sup>2</sup>	$\langle  L  \rangle = 0.50$ , $\langle L^2 \rangle = 0.33$	Xtriage
Outliers	0 of 48404 reflections	Xtriage
$F_o, F_c$ correlation	0.90	EDS
Total number of atoms	20908	wwPDB-VP
Average B, all atoms (Å <sup>2</sup> )	19.0	wwPDB-VP

Xtriage's analysis on translational NCS is as follows: *The largest off-origin peak in the Patterson function is 6.43% of the height of the origin peak. No significant pseudotranslation is detected.*

<sup>1</sup>Intensities estimated from amplitudes.

<sup>2</sup>Theoretical values of  $\langle |L| \rangle$ ,  $\langle L^2 \rangle$  for acentric reflections are 0.5, 0.375 respectively for untwinned datasets, and 0.333, 0.2 for perfectly twinned datasets.

## 5 Model quality

### 5.1 Standard geometry

Bond lengths and bond angles in the following residue types are not validated in this section: PQQ, CA

The Z score for a bond length (or angle) is the number of standard deviations the observed value is removed from the expected value. A bond length (or angle) with  $|Z| > 5$  is considered an outlier worth inspection. RMSZ is the root-mean-square of all Z scores of the bond lengths (or angles).

Mol	Chain	Bond lengths		Bond angles	
		RMSZ	# $ Z  > 5$	RMSZ	# $ Z  > 5$
1	A	0.50	0/4751	0.76	3/6457 (0.0%)
1	C	0.50	0/4751	0.76	3/6457 (0.0%)
1	E	0.50	0/4751	0.76	3/6457 (0.0%)
1	G	0.50	0/4751	0.76	3/6457 (0.0%)
2	B	0.47	0/594	0.73	2/791 (0.3%)
2	D	0.47	0/594	0.73	2/791 (0.3%)
2	F	0.47	0/594	0.73	2/791 (0.3%)
2	H	0.47	0/594	0.73	2/791 (0.3%)
All	All	0.49	0/21380	0.76	20/28992 (0.1%)

Chiral center outliers are detected by calculating the chiral volume of a chiral center and verifying if the center is modelled as a planar moiety or with the opposite hand. A planarity outlier is detected by checking planarity of atoms in a peptide group, atoms in a mainchain group or atoms of a sidechain that are expected to be planar.

Mol	Chain	#Chirality outliers	#Planarity outliers
1	A	0	1
1	C	0	1
1	E	0	1
1	G	0	1
All	All	0	4

There are no bond length outliers.

All (20) bond angle outliers are listed below:

Mol	Chain	Res	Type	Atoms	Z	Observed(°)	Ideal(°)
1	C	476	TRP	N-CA-C	8.82	134.80	111.00
1	A	476	TRP	N-CA-C	8.81	134.78	111.00
1	G	476	TRP	N-CA-C	8.81	134.78	111.00
1	E	476	TRP	N-CA-C	8.80	134.76	111.00

*Continued on next page...*

*Continued from previous page...*

Mol	Chain	Res	Type	Atoms	Z	Observed(°)	Ideal(°)
1	G	2	ASP	O-C-N	-7.43	110.81	122.70
1	A	2	ASP	O-C-N	-7.42	110.82	122.70
1	E	2	ASP	O-C-N	-7.42	110.83	122.70
1	C	2	ASP	O-C-N	-7.41	110.85	122.70
2	F	44	ILE	C-N-CA	-5.64	107.60	121.70
2	B	44	ILE	C-N-CA	-5.63	107.61	121.70
2	D	44	ILE	C-N-CA	-5.63	107.62	121.70
2	H	44	ILE	C-N-CA	-5.62	107.65	121.70
2	F	45	LYS	O-C-N	-5.50	113.91	122.70
2	H	45	LYS	O-C-N	-5.49	113.92	122.70
2	B	45	LYS	O-C-N	-5.48	113.93	122.70
2	D	45	LYS	O-C-N	-5.47	113.95	122.70
1	C	321	LYS	O-C-N	-5.37	114.11	122.70
1	G	321	LYS	O-C-N	-5.36	114.12	122.70
1	A	321	LYS	O-C-N	-5.35	114.13	122.70
1	E	321	LYS	O-C-N	-5.33	114.17	122.70

There are no chirality outliers.

All (4) planarity outliers are listed below:

Mol	Chain	Res	Type	Group
1	A	274	ASN	Peptide
1	C	274	ASN	Peptide
1	E	274	ASN	Peptide
1	G	274	ASN	Peptide

## 5.2 Too-close contacts ⓘ

In the following table, the Non-H and H(model) columns list the number of non-hydrogen atoms and hydrogen atoms in the chain respectively. The H(added) column lists the number of hydrogen atoms added and optimized by MolProbity. The Clashes column lists the number of clashes within the asymmetric unit, whereas Symm-Clashes lists symmetry related clashes.

Mol	Chain	Non-H	H(model)	H(added)	Clashes	Symm-Clashes
1	A	4621	0	4441	128	0
1	C	4621	0	4441	129	0
1	E	4621	0	4441	124	0
1	G	4621	0	4441	120	0
2	B	581	0	579	11	0
2	D	581	0	577	10	0
2	F	581	0	579	12	0

*Continued on next page...*

*Continued from previous page...*

Mol	Chain	Non-H	H(model)	H(added)	Clashes	Symm-Clashes
2	H	581	0	579	14	0
3	A	24	0	3	1	0
3	C	24	0	3	1	0
3	E	24	0	3	1	0
3	G	24	0	3	1	0
4	A	1	0	0	0	0
4	C	1	0	0	0	0
4	E	1	0	0	0	0
4	G	1	0	0	0	0
All	All	20908	0	20090	524	0

The all-atom clashscore is defined as the number of clashes found per 1000 atoms (including hydrogen atoms). The all-atom clashscore for this structure is 13.

All (524) close contacts within the same asymmetric unit are listed below, sorted by their clash magnitude.

Atom-1	Atom-2	Interatomic distance (Å)	Clash overlap (Å)
1:C:284:ASP:HB3	1:C:287:THR:HG22	1.56	0.87
1:E:284:ASP:HB3	1:E:287:THR:HG22	1.56	0.87
1:G:284:ASP:HB3	1:G:287:THR:HG22	1.56	0.86
1:A:284:ASP:HB3	1:A:287:THR:HG22	1.56	0.86
1:G:154:VAL:HG11	2:H:40:GLN:HG2	1.63	0.81
1:G:378:MET:HE1	1:G:421:PHE:HA	1.64	0.80
1:E:154:VAL:HG11	2:F:40:GLN:HG2	1.63	0.79
1:E:378:MET:HE1	1:E:421:PHE:HA	1.65	0.79
1:C:154:VAL:HG11	2:D:40:GLN:HG2	1.63	0.78
1:A:333:GLY:HA2	1:A:351:LEU:HD12	1.66	0.78
1:C:378:MET:HE1	1:C:421:PHE:HA	1.65	0.78
1:A:154:VAL:HG11	2:B:40:GLN:HG2	1.63	0.78
1:G:333:GLY:HA2	1:G:351:LEU:HD12	1.66	0.77
1:E:114:TRP:CZ3	1:E:116:GLY:HA2	2.19	0.77
1:A:114:TRP:CZ3	1:A:116:GLY:HA2	2.19	0.77
1:G:114:TRP:CZ3	1:G:116:GLY:HA2	2.19	0.77
1:E:51:LEU:O	1:E:52:ASN:HB2	1.85	0.77
1:C:333:GLY:HA2	1:C:351:LEU:HD12	1.66	0.77
1:C:114:TRP:CZ3	1:C:116:GLY:HA2	2.19	0.76
1:E:333:GLY:HA2	1:E:351:LEU:HD12	1.66	0.76
1:C:51:LEU:O	1:C:52:ASN:HB2	1.85	0.76
1:G:51:LEU:O	1:G:52:ASN:HB2	1.85	0.75
1:C:260:GLY:O	1:C:277:THR:HB	1.87	0.75
1:A:51:LEU:O	1:A:52:ASN:HB2	1.86	0.74

*Continued on next page...*

*Continued from previous page...*

Atom-1	Atom-2	Interatomic distance (Å)	Clash overlap (Å)
1:E:260:GLY:O	1:E:277:THR:HB	1.87	0.74
1:G:411:ILE:HB	1:G:454:GLN:HG3	1.69	0.74
1:E:411:ILE:HB	1:E:454:GLN:HG3	1.69	0.74
1:A:260:GLY:O	1:A:277:THR:HB	1.87	0.74
1:A:225:LEU:HB3	1:A:275:LYS:HG2	1.70	0.74
1:A:378:MET:HE1	1:A:421:PHE:HA	1.68	0.74
1:G:260:GLY:O	1:G:277:THR:HB	1.87	0.74
1:E:225:LEU:HB3	1:E:275:LYS:HG2	1.70	0.74
1:G:225:LEU:HB3	1:G:275:LYS:HG2	1.70	0.73
1:C:225:LEU:HB3	1:C:275:LYS:HG2	1.70	0.73
1:C:411:ILE:HB	1:C:454:GLN:HG3	1.69	0.73
1:A:411:ILE:HB	1:A:454:GLN:HG3	1.70	0.73
1:G:12:ASP:HB3	1:G:524:THR:O	1.94	0.68
1:C:278:MET:HE2	1:C:300:ASP:HB2	1.76	0.68
1:G:284:ASP:HB3	1:G:287:THR:CG2	2.24	0.67
1:E:284:ASP:HB3	1:E:287:THR:CG2	2.24	0.67
1:C:12:ASP:HB3	1:C:524:THR:O	1.94	0.67
1:C:37:VAL:HG22	1:C:486:LEU:HD21	1.76	0.67
1:G:350:LYS:HD3	1:G:355:VAL:HB	1.76	0.67
1:C:350:LYS:HD3	1:C:355:VAL:HB	1.76	0.67
1:C:284:ASP:HB3	1:C:287:THR:CG2	2.24	0.67
1:A:284:ASP:HB3	1:A:287:THR:CG2	2.24	0.67
1:A:12:ASP:HB3	1:A:524:THR:O	1.94	0.67
1:A:350:LYS:HD3	1:A:355:VAL:HB	1.76	0.67
1:A:37:VAL:HG22	1:A:486:LEU:HD21	1.77	0.67
1:E:350:LYS:HD3	1:E:355:VAL:HB	1.76	0.66
1:E:278:MET:HE2	1:E:300:ASP:HB2	1.77	0.66
1:G:278:MET:HE2	1:G:300:ASP:HB2	1.77	0.66
1:E:12:ASP:HB3	1:E:524:THR:O	1.94	0.66
1:A:278:MET:HE2	1:A:300:ASP:HB2	1.76	0.66
1:G:287:THR:HG23	1:G:289:GLU:H	1.61	0.65
1:G:37:VAL:HG22	1:G:486:LEU:HD21	1.76	0.65
1:E:37:VAL:HG22	1:E:486:LEU:HD21	1.77	0.65
1:E:287:THR:HG23	1:E:289:GLU:H	1.61	0.65
1:E:284:ASP:CB	1:E:287:THR:HG22	2.27	0.65
1:G:284:ASP:CB	1:G:287:THR:HG22	2.27	0.64
1:C:98:ALA:HB1	1:C:129:LEU:HD13	1.79	0.64
1:C:287:THR:HG23	1:C:289:GLU:H	1.61	0.64
1:G:98:ALA:HB1	1:G:129:LEU:HD13	1.79	0.64
1:A:287:THR:HG23	1:A:289:GLU:H	1.61	0.64
1:E:98:ALA:HB1	1:E:129:LEU:HD13	1.79	0.64

*Continued on next page...*

*Continued from previous page...*

Atom-1	Atom-2	Interatomic distance (Å)	Clash overlap (Å)
1:E:387:PRO:HB3	1:E:392:TYR:CD1	2.34	0.63
1:A:98:ALA:HB1	1:A:129:LEU:HD13	1.79	0.63
1:G:176:ALA:HB3	3:G:601:PQQ:O7B	1.99	0.62
1:A:387:PRO:HB3	1:A:392:TYR:CD1	2.34	0.62
1:C:387:PRO:HB3	1:C:392:TYR:CD1	2.34	0.62
1:A:229:THR:OG1	1:A:275:LYS:HB2	2.00	0.62
1:C:284:ASP:CB	1:C:287:THR:HG22	2.27	0.62
1:A:176:ALA:HB3	3:A:601:PQQ:O7B	1.99	0.62
1:A:284:ASP:CB	1:A:287:THR:HG22	2.28	0.62
1:G:229:THR:OG1	1:G:275:LYS:HB2	2.00	0.62
1:G:387:PRO:HB3	1:G:392:TYR:CD1	2.34	0.62
1:C:176:ALA:HB3	3:C:601:PQQ:O7B	1.99	0.62
1:E:176:ALA:HB3	3:E:601:PQQ:O7B	1.99	0.61
1:E:200:ALA:O	1:E:276:TRP:HB2	2.00	0.61
1:G:200:ALA:O	1:G:276:TRP:HB2	2.00	0.61
1:E:229:THR:OG1	1:E:275:LYS:HB2	2.00	0.61
1:C:229:THR:OG1	1:C:275:LYS:HB2	2.00	0.61
1:E:382:ALA:HB1	1:E:385:ILE:HD11	1.83	0.61
1:C:382:ALA:HB1	1:C:385:ILE:HD11	1.83	0.61
1:A:382:ALA:HB1	1:A:385:ILE:HD11	1.83	0.61
1:C:200:ALA:O	1:C:276:TRP:HB2	2.00	0.61
1:G:382:ALA:HB1	1:G:385:ILE:HD11	1.83	0.61
1:E:265:TRP:CE2	1:E:303:GLU:HG3	2.36	0.61
1:A:200:ALA:O	1:A:276:TRP:HB2	2.00	0.60
1:G:333:GLY:CA	1:G:351:LEU:HD12	2.32	0.60
1:C:333:GLY:CA	1:C:351:LEU:HD12	2.32	0.60
2:D:27:LYS:HD2	2:D:28:TYR:CE1	2.37	0.60
1:C:265:TRP:CE2	1:C:303:GLU:HG3	2.36	0.60
1:A:265:TRP:CE2	1:A:303:GLU:HG3	2.36	0.60
1:G:154:VAL:CG1	2:H:40:GLN:HG2	2.32	0.59
1:G:265:TRP:CE2	1:G:303:GLU:HG3	2.36	0.59
1:E:154:VAL:CG1	2:F:40:GLN:HG2	2.32	0.59
1:G:32:ILE:HD13	1:G:40:LEU:HD11	1.85	0.59
2:B:27:LYS:HD2	2:B:28:TYR:CE1	2.37	0.59
2:F:27:LYS:HD2	2:F:28:TYR:CE1	2.37	0.59
1:C:32:ILE:HD13	1:C:40:LEU:HD11	1.85	0.59
1:C:154:VAL:CG1	2:D:40:GLN:HG2	2.32	0.59
2:H:27:LYS:HD2	2:H:28:TYR:CE1	2.37	0.59
1:E:32:ILE:HD13	1:E:40:LEU:HD11	1.85	0.58
1:E:68:HIS:CE1	1:E:110:GLY:HA2	2.38	0.58
1:A:68:HIS:CE1	1:A:110:GLY:HA2	2.38	0.58

*Continued on next page...*

*Continued from previous page...*

Atom-1	Atom-2	Interatomic distance (Å)	Clash overlap (Å)
1:C:68:HIS:CE1	1:C:110:GLY:HA2	2.38	0.58
1:C:114:TRP:HH2	1:C:117:ASP:OD1	1.87	0.58
1:G:68:HIS:CE1	1:G:110:GLY:HA2	2.38	0.58
1:A:154:VAL:CG1	2:B:40:GLN:HG2	2.32	0.57
1:A:32:ILE:HD13	1:A:40:LEU:HD11	1.85	0.57
1:A:333:GLY:CA	1:A:351:LEU:HD12	2.32	0.57
1:E:333:GLY:CA	1:E:351:LEU:HD12	2.32	0.57
1:C:265:TRP:CD2	1:C:432:VAL:HG13	2.40	0.57
1:G:265:TRP:CD2	1:G:432:VAL:HG13	2.40	0.57
1:E:114:TRP:HH2	1:E:117:ASP:OD1	1.87	0.57
1:A:493:ASP:N	1:A:493:ASP:OD1	2.38	0.57
1:A:506:LEU:HG	1:C:589:PRO:HB2	1.85	0.57
1:A:265:TRP:CD2	1:A:432:VAL:HG13	2.40	0.57
1:G:114:TRP:HH2	1:G:117:ASP:OD1	1.87	0.56
1:A:114:TRP:HH2	1:A:117:ASP:OD1	1.87	0.56
1:C:493:ASP:N	1:C:493:ASP:OD1	2.38	0.56
1:E:265:TRP:CD2	1:E:432:VAL:HG13	2.40	0.56
1:E:370:ARG:HB2	2:F:2:ASP:HA	1.88	0.56
1:A:370:ARG:HB2	2:B:2:ASP:HA	1.88	0.55
1:C:370:ARG:HB2	2:D:2:ASP:HA	1.88	0.55
1:G:370:ARG:HB2	2:H:2:ASP:HA	1.88	0.55
1:A:154:VAL:HG12	1:A:154:VAL:O	2.07	0.55
1:C:279:THR:HG23	1:C:294:TYR:C	2.28	0.55
1:C:154:VAL:HG12	1:C:154:VAL:O	2.07	0.55
1:E:279:THR:HG23	1:E:294:TYR:C	2.27	0.55
1:E:335:VAL:HG11	1:E:458:TYR:CE2	2.42	0.54
1:G:335:VAL:HG11	1:G:458:TYR:CE2	2.42	0.54
1:G:279:THR:HG23	1:G:294:TYR:C	2.27	0.54
1:C:238:GLY:O	1:C:262:PRO:HA	2.07	0.54
1:C:335:VAL:HG11	1:C:458:TYR:CE2	2.42	0.54
1:A:127:THR:HG23	1:A:162:PRO:HG3	1.90	0.54
1:G:301:GLU:HG3	1:G:302:TRP:CE2	2.43	0.54
1:C:140:THR:HG22	2:H:27:LYS:NZ	2.23	0.54
1:A:301:GLU:HG3	1:A:302:TRP:CE2	2.43	0.54
1:A:279:THR:HG23	1:A:294:TYR:C	2.27	0.54
1:G:238:GLY:O	1:G:262:PRO:HA	2.07	0.54
1:C:409:MET:HB2	1:C:411:ILE:HD11	1.90	0.53
1:E:238:GLY:O	1:E:262:PRO:HA	2.07	0.53
1:C:48:THR:HG23	1:C:574:GLY:HA2	1.90	0.53
1:G:127:THR:HG23	1:G:162:PRO:HG3	1.90	0.53
1:A:409:MET:HB2	1:A:411:ILE:HD11	1.91	0.53

*Continued on next page...*

*Continued from previous page...*

Atom-1	Atom-2	Interatomic distance (Å)	Clash overlap (Å)
1:A:238:GLY:O	1:A:262:PRO:HA	2.07	0.53
1:C:127:THR:HG23	1:C:162:PRO:HG3	1.89	0.53
1:E:154:VAL:O	1:E:154:VAL:HG12	2.07	0.53
1:A:335:VAL:HG11	1:A:458:TYR:CE2	2.42	0.53
1:E:409:MET:HB2	1:E:411:ILE:HD11	1.91	0.53
1:C:382:ALA:CB	1:C:385:ILE:HD11	2.39	0.53
1:G:370:ARG:O	1:G:372:PRO:HD3	2.09	0.53
1:E:301:GLU:HG3	1:E:302:TRP:CE2	2.43	0.53
1:G:395:GLN:HG2	1:G:395:GLN:O	2.08	0.53
1:C:301:GLU:HG3	1:C:302:TRP:CE2	2.43	0.53
1:E:386:CYS:HB3	1:E:392:TYR:OH	2.09	0.53
1:C:386:CYS:HB3	1:C:392:TYR:OH	2.09	0.53
1:G:386:CYS:HB3	1:G:392:TYR:OH	2.09	0.53
1:A:255:ILE:HG22	1:A:283:ARG:HB2	1.91	0.53
1:E:127:THR:HG23	1:E:162:PRO:HG3	1.89	0.53
1:E:382:ALA:CB	1:E:385:ILE:HD11	2.39	0.53
1:A:395:GLN:O	1:A:395:GLN:HG2	2.09	0.53
1:A:180:VAL:O	1:A:239:GLY:HA2	2.09	0.53
1:A:48:THR:HG23	1:A:574:GLY:HA2	1.90	0.53
1:E:180:VAL:O	1:E:239:GLY:HA2	2.09	0.53
1:G:421:PHE:CE1	1:G:433:GLY:HA2	2.44	0.53
1:A:386:CYS:HB3	1:A:392:TYR:OH	2.09	0.53
1:G:382:ALA:CB	1:G:385:ILE:HD11	2.39	0.53
1:C:395:GLN:HG2	1:C:395:GLN:O	2.09	0.53
1:G:154:VAL:O	1:G:154:VAL:HG12	2.07	0.53
1:C:421:PHE:CE1	1:C:433:GLY:HA2	2.44	0.53
1:E:10:SER:HB3	1:E:13:ASN:HD22	1.74	0.53
1:G:103:CYS:SG	1:G:104:CYS:N	2.82	0.53
1:E:255:ILE:HG22	1:E:283:ARG:HB2	1.91	0.52
1:C:103:CYS:SG	1:C:104:CYS:N	2.82	0.52
1:G:180:VAL:O	1:G:239:GLY:HA2	2.09	0.52
1:G:48:THR:HG23	1:G:574:GLY:HA2	1.90	0.52
1:A:382:ALA:CB	1:A:385:ILE:HD11	2.39	0.52
2:B:23:ILE:HD12	2:B:30:PRO:HD3	1.91	0.52
1:A:370:ARG:O	1:A:372:PRO:HD3	2.09	0.52
1:A:103:CYS:SG	1:A:104:CYS:N	2.82	0.52
1:G:409:MET:HB2	1:G:411:ILE:HD11	1.91	0.52
1:A:421:PHE:CE1	1:A:433:GLY:HA2	2.44	0.52
1:A:10:SER:HB3	1:A:13:ASN:HD22	1.74	0.52
1:G:493:ASP:OD1	1:G:493:ASP:N	2.38	0.52
1:E:370:ARG:O	1:E:372:PRO:HD3	2.09	0.52

*Continued on next page...*



*Continued from previous page...*

Atom-1	Atom-2	Interatomic distance (Å)	Clash overlap (Å)
1:E:395:GLN:HG2	1:E:395:GLN:O	2.09	0.52
1:E:421:PHE:CE1	1:E:433:GLY:HA2	2.44	0.52
1:C:370:ARG:O	1:C:372:PRO:HD3	2.09	0.52
1:E:103:CYS:SG	1:E:104:CYS:N	2.82	0.52
1:C:10:SER:HB3	1:C:13:ASN:HD22	1.74	0.52
2:D:23:ILE:HD12	2:D:30:PRO:HD3	1.91	0.52
2:H:23:ILE:HD12	2:H:30:PRO:HD3	1.91	0.52
1:C:255:ILE:HG22	1:C:283:ARG:HB2	1.91	0.51
1:A:476:TRP:CZ2	1:A:541:PRO:HD3	2.46	0.51
1:C:180:VAL:O	1:C:239:GLY:HA2	2.09	0.51
1:A:74:ASN:HD22	1:A:91:LYS:HA	1.75	0.51
1:C:74:ASN:HD22	1:C:91:LYS:HA	1.76	0.51
1:G:388:SER:HB2	1:G:416:MET:HB3	1.92	0.51
2:F:23:ILE:HD12	2:F:30:PRO:HD3	1.91	0.51
1:G:371:ASP:OD1	1:G:373:GLU:HB2	2.11	0.51
1:E:48:THR:HG23	1:E:574:GLY:HA2	1.91	0.51
1:C:388:SER:HB2	1:C:416:MET:HB3	1.92	0.51
1:A:371:ASP:OD1	1:A:373:GLU:HB2	2.11	0.51
1:E:476:TRP:CZ2	1:E:541:PRO:HD3	2.45	0.51
1:G:10:SER:HB3	1:G:13:ASN:HD22	1.74	0.51
1:G:255:ILE:HG22	1:G:283:ARG:HB2	1.91	0.51
1:E:74:ASN:HD22	1:E:91:LYS:HA	1.75	0.51
1:C:476:TRP:CZ2	1:C:541:PRO:HD3	2.46	0.51
1:C:188:ASP:OD1	1:C:190:LYS:HB2	2.11	0.51
1:G:476:TRP:CZ2	1:G:541:PRO:HD3	2.45	0.50
1:E:388:SER:HB2	1:E:416:MET:HB3	1.92	0.50
2:D:27:LYS:HG2	2:D:27:LYS:O	2.12	0.50
1:E:371:ASP:OD1	1:E:373:GLU:HB2	2.11	0.50
1:A:188:ASP:OD1	1:A:190:LYS:HB2	2.11	0.50
1:G:74:ASN:HD22	1:G:91:LYS:HA	1.75	0.50
2:F:27:LYS:O	2:F:27:LYS:HG2	2.11	0.50
1:G:188:ASP:OD1	1:G:190:LYS:HB2	2.11	0.50
1:C:371:ASP:OD1	1:C:373:GLU:HB2	2.11	0.50
1:E:188:ASP:OD1	1:E:190:LYS:HB2	2.11	0.49
1:A:388:SER:HB2	1:A:416:MET:HB3	1.92	0.49
2:B:27:LYS:HG2	2:B:27:LYS:O	2.12	0.49
1:A:267:GLU:HG2	1:A:299:HIS:NE2	2.28	0.49
1:A:278:MET:HE2	1:A:300:ASP:CB	2.43	0.49
1:C:267:GLU:HG2	1:C:299:HIS:NE2	2.28	0.49
1:A:540:TRP:N	1:A:541:PRO:HD2	2.28	0.49
1:C:540:TRP:N	1:C:541:PRO:HD2	2.28	0.49

*Continued on next page...*

*Continued from previous page...*

Atom-1	Atom-2	Interatomic distance (Å)	Clash overlap (Å)
1:C:326:LEU:HD12	1:C:326:LEU:C	2.33	0.49
1:E:540:TRP:N	1:E:541:PRO:HD2	2.28	0.49
1:C:140:THR:HB	2:H:27:LYS:CE	2.43	0.49
1:E:493:ASP:N	1:E:493:ASP:OD1	2.38	0.49
1:E:37:VAL:HG21	1:E:486:LEU:HD11	1.95	0.49
1:E:267:GLU:HG2	1:E:299:HIS:NE2	2.28	0.49
1:E:326:LEU:C	1:E:326:LEU:HD12	2.33	0.49
1:C:278:MET:HE2	1:C:300:ASP:CB	2.42	0.49
2:H:27:LYS:O	2:H:27:LYS:HG2	2.12	0.49
1:E:74:ASN:ND2	1:E:91:LYS:HA	2.28	0.49
1:G:74:ASN:ND2	1:G:91:LYS:HA	2.28	0.49
1:A:37:VAL:HG21	1:A:486:LEU:HD11	1.95	0.48
1:G:326:LEU:C	1:G:326:LEU:HD12	2.33	0.48
1:G:32:ILE:HG12	1:G:580:LEU:HD13	1.96	0.48
1:A:74:ASN:ND2	1:A:91:LYS:HA	2.28	0.48
1:C:74:ASN:ND2	1:C:91:LYS:HA	2.28	0.48
1:G:540:TRP:N	1:G:541:PRO:HD2	2.28	0.48
1:A:32:ILE:HG12	1:A:580:LEU:HD13	1.96	0.48
1:E:264:PRO:HD3	1:E:431:PHE:CE2	2.49	0.48
1:E:32:ILE:HG12	1:E:580:LEU:HD13	1.96	0.48
1:A:316:LYS:HA	1:A:321:LYS:O	2.14	0.48
1:G:267:GLU:HG2	1:G:299:HIS:NE2	2.28	0.48
1:C:520:PRO:HG3	1:C:533:ILE:HD12	1.96	0.48
1:A:326:LEU:HD12	1:A:326:LEU:C	2.33	0.48
1:C:316:LYS:HA	1:C:321:LYS:O	2.14	0.47
1:G:264:PRO:HD3	1:G:431:PHE:CE2	2.49	0.47
1:E:520:PRO:HG3	1:E:533:ILE:HD12	1.96	0.47
1:E:301:GLU:HG3	1:E:302:TRP:CZ2	2.49	0.47
1:E:184:LEU:H	1:E:184:LEU:HD23	1.79	0.47
1:A:184:LEU:H	1:A:184:LEU:HD23	1.79	0.47
1:A:264:PRO:HD3	1:A:431:PHE:CE2	2.49	0.47
1:G:37:VAL:HG21	1:G:486:LEU:HD11	1.95	0.47
1:A:520:PRO:HG3	1:A:533:ILE:HD12	1.96	0.47
1:E:420:PRO:HA	1:E:434:ALA:HA	1.96	0.47
1:C:301:GLU:HG3	1:C:302:TRP:CZ2	2.49	0.47
1:C:32:ILE:HG12	1:C:580:LEU:HD13	1.96	0.47
1:E:80:LEU:HB3	1:E:525:HIS:CE1	2.50	0.47
1:E:316:LYS:HA	1:E:321:LYS:O	2.14	0.47
1:C:264:PRO:HD3	1:C:431:PHE:CE2	2.49	0.47
1:G:316:LYS:HA	1:G:321:LYS:O	2.14	0.47
1:G:301:GLU:HG3	1:G:302:TRP:CZ2	2.49	0.47

*Continued on next page...*

*Continued from previous page...*

Atom-1	Atom-2	Interatomic distance (Å)	Clash overlap (Å)
1:A:80:LEU:HB3	1:A:525:HIS:CE1	2.50	0.47
1:C:80:LEU:HB3	1:C:525:HIS:CE1	2.50	0.47
1:G:184:LEU:H	1:G:184:LEU:HD23	1.79	0.47
1:A:301:GLU:HG3	1:A:302:TRP:CZ2	2.49	0.47
1:C:420:PRO:HA	1:C:434:ALA:HA	1.97	0.47
1:G:80:LEU:HB3	1:G:525:HIS:CE1	2.50	0.47
1:G:284:ASP:OD2	1:G:287:THR:HG22	2.15	0.47
1:C:31:GLN:HB3	1:C:529:GLN:OE1	2.15	0.47
1:C:184:LEU:HD23	1:C:184:LEU:H	1.79	0.47
1:C:33:ASN:HA	1:C:486:LEU:HD22	1.97	0.46
1:G:278:MET:HE3	1:G:304:TYR:HB2	1.97	0.46
1:E:89:GLN:OE1	1:E:91:LYS:HE3	2.15	0.46
1:G:33:ASN:HA	1:G:486:LEU:HD22	1.97	0.46
1:A:31:GLN:HB3	1:A:529:GLN:OE1	2.15	0.46
1:E:31:GLN:HB3	1:E:529:GLN:OE1	2.15	0.46
1:C:37:VAL:HG21	1:C:486:LEU:HD11	1.95	0.46
2:D:30:PRO:O	2:D:31:LYS:HB2	2.16	0.46
1:C:89:GLN:OE1	1:C:91:LYS:HE3	2.15	0.46
1:G:520:PRO:HG3	1:G:533:ILE:HD12	1.96	0.46
1:C:284:ASP:OD2	1:C:287:THR:HG22	2.15	0.46
1:A:284:ASP:OD2	1:A:287:THR:HG22	2.15	0.46
2:B:30:PRO:O	2:B:31:LYS:HB2	2.16	0.46
1:G:420:PRO:HA	1:G:434:ALA:HA	1.96	0.46
1:G:89:GLN:OE1	1:G:91:LYS:HE3	2.15	0.46
1:G:335:VAL:HG23	1:G:351:LEU:HG	1.98	0.46
1:C:335:VAL:HG23	1:C:351:LEU:HG	1.98	0.46
1:A:33:ASN:HA	1:A:486:LEU:HD22	1.97	0.46
1:A:556:LEU:N	1:A:556:LEU:HD12	2.31	0.46
1:A:89:GLN:OE1	1:A:91:LYS:HE3	2.15	0.46
1:G:31:GLN:HB3	1:G:529:GLN:OE1	2.15	0.46
1:E:193:GLU:HB2	2:F:55:VAL:HG11	1.98	0.46
1:E:284:ASP:OD2	1:E:287:THR:HG22	2.15	0.46
1:G:34:LYS:HA	1:G:37:VAL:HG23	1.98	0.46
1:E:32:ILE:HD13	1:E:40:LEU:CD1	2.46	0.46
2:H:30:PRO:O	2:H:31:LYS:HB2	2.16	0.46
1:A:420:PRO:HA	1:A:434:ALA:HA	1.96	0.46
1:E:335:VAL:HG23	1:E:351:LEU:HG	1.98	0.45
1:C:556:LEU:HD12	1:C:556:LEU:N	2.31	0.45
1:E:11:ASP:HB3	1:E:29:LEU:HD21	1.98	0.45
1:G:193:GLU:HB2	2:H:55:VAL:HG11	1.98	0.45
1:A:34:LYS:HA	1:A:37:VAL:CG2	2.47	0.45

*Continued on next page...*

*Continued from previous page...*

Atom-1	Atom-2	Interatomic distance (Å)	Clash overlap (Å)
1:G:278:MET:HE2	1:G:300:ASP:CB	2.45	0.45
1:E:556:LEU:HD12	1:E:556:LEU:N	2.31	0.45
1:G:11:ASP:HB3	1:G:29:LEU:HD21	1.98	0.45
1:C:193:GLU:HB2	2:D:55:VAL:HG11	1.98	0.45
1:A:335:VAL:HG23	1:A:351:LEU:HG	1.98	0.45
2:F:30:PRO:O	2:F:31:LYS:HB2	2.16	0.45
1:E:404:ARG:NH2	1:E:485:ASP:OD1	2.50	0.45
1:G:404:ARG:NH2	1:G:485:ASP:OD1	2.50	0.45
1:A:511:LYS:HE3	1:C:84:GLY:HA2	1.97	0.45
1:A:193:GLU:HB2	2:B:55:VAL:HG11	1.98	0.45
1:E:34:LYS:HA	1:E:37:VAL:CG2	2.47	0.45
1:E:33:ASN:HA	1:E:486:LEU:HD22	1.97	0.45
1:E:388:SER:CB	1:E:416:MET:HB3	2.47	0.45
1:G:25:ASN:HD22	1:G:25:ASN:HA	1.46	0.45
1:A:278:MET:HE3	1:A:304:TYR:HB2	1.99	0.45
1:C:32:ILE:HD13	1:C:40:LEU:CD1	2.46	0.45
1:G:388:SER:CB	1:G:416:MET:HB3	2.47	0.45
1:A:11:ASP:HB3	1:A:29:LEU:HD21	1.98	0.45
1:E:278:MET:HE3	1:E:304:TYR:HB2	1.97	0.45
1:G:32:ILE:HD13	1:G:40:LEU:CD1	2.46	0.45
1:C:34:LYS:HA	1:C:37:VAL:CG2	2.47	0.44
1:A:404:ARG:NH2	1:A:485:ASP:OD1	2.50	0.44
1:E:426:ARG:O	1:E:427:ALA:C	2.54	0.44
1:C:385:ILE:O	1:C:415:CYS:HB3	2.18	0.44
1:A:32:ILE:HD13	1:A:40:LEU:CD1	2.46	0.44
1:C:404:ARG:NH2	1:C:485:ASP:OD1	2.50	0.44
1:A:359:LYS:HD2	2:F:69:ALA:HB3	1.98	0.44
1:E:417:ASP:HB2	1:E:437:ASN:HB3	1.99	0.44
1:C:534:TYR:CD1	1:C:575:VAL:HG22	2.52	0.44
1:G:426:ARG:O	1:G:427:ALA:C	2.54	0.44
1:A:34:LYS:HA	1:A:37:VAL:HG23	1.98	0.44
1:C:426:ARG:O	1:C:427:ALA:C	2.54	0.44
1:G:385:ILE:O	1:G:415:CYS:HB3	2.18	0.44
1:E:534:TYR:CD1	1:E:575:VAL:HG22	2.52	0.44
1:C:305:ALA:O	1:C:331:ARG:HG3	2.17	0.44
1:A:390:MET:HG2	1:A:540:TRP:CZ3	2.53	0.44
1:C:388:SER:CB	1:C:416:MET:HB3	2.47	0.44
1:C:390:MET:HG2	1:C:540:TRP:CZ3	2.53	0.44
1:C:11:ASP:HB3	1:C:29:LEU:HD21	1.98	0.44
1:A:534:TYR:CD1	1:A:575:VAL:HG22	2.52	0.44
1:A:417:ASP:HB2	1:A:437:ASN:HB3	1.99	0.44

*Continued on next page...*

*Continued from previous page...*

Atom-1	Atom-2	Interatomic distance (Å)	Clash overlap (Å)
1:E:305:ALA:O	1:E:331:ARG:HG3	2.17	0.44
1:G:556:LEU:N	1:G:556:LEU:HD12	2.31	0.44
1:A:454:GLN:HB3	1:A:470:MET:HE1	2.00	0.44
1:G:305:ALA:O	1:G:331:ARG:HG3	2.17	0.44
1:G:34:LYS:HA	1:G:37:VAL:CG2	2.47	0.44
2:B:27:LYS:HD2	2:B:28:TYR:CZ	2.53	0.44
1:C:417:ASP:HB2	1:C:437:ASN:HB3	1.99	0.44
1:G:534:TYR:CD1	1:G:575:VAL:HG22	2.52	0.44
1:E:114:TRP:CH2	1:E:116:GLY:HA2	2.53	0.44
1:A:305:ALA:O	1:A:331:ARG:HG3	2.17	0.44
2:D:27:LYS:HD2	2:D:28:TYR:CZ	2.53	0.44
1:A:275:LYS:HG3	1:A:276:TRP:CE2	2.53	0.44
2:F:27:LYS:HD2	2:F:28:TYR:CZ	2.53	0.44
1:E:280:ILE:HG13	1:E:296:LYS:HD3	2.00	0.44
1:E:34:LYS:HA	1:E:37:VAL:HG23	1.98	0.43
1:C:4:LEU:HA	1:C:4:LEU:HD23	1.88	0.43
1:E:454:GLN:HB3	1:E:470:MET:CE	2.48	0.43
1:C:34:LYS:HA	1:C:37:VAL:HG23	1.98	0.43
1:E:40:LEU:O	1:E:41:ARG:HD2	2.19	0.43
1:E:277:THR:HG23	1:E:277:THR:H	1.50	0.43
1:C:109:ARG:HE	1:C:395:GLN:HG3	1.84	0.43
1:A:25:ASN:HA	1:A:25:ASN:HD22	1.46	0.43
1:E:275:LYS:HA	1:E:276:TRP:HA	1.74	0.43
1:E:385:ILE:O	1:E:415:CYS:HB3	2.18	0.43
1:G:40:LEU:O	1:G:41:ARG:CD	2.67	0.43
1:C:40:LEU:O	1:C:41:ARG:CD	2.67	0.43
1:G:109:ARG:HE	1:G:395:GLN:HG3	1.84	0.43
1:A:426:ARG:O	1:A:427:ALA:C	2.54	0.43
1:A:279:THR:HG23	1:A:294:TYR:O	2.19	0.43
1:C:454:GLN:HB3	1:C:470:MET:CE	2.48	0.43
2:H:27:LYS:HD2	2:H:28:TYR:CZ	2.53	0.43
1:A:388:SER:CB	1:A:416:MET:HB3	2.47	0.43
1:C:280:ILE:HG13	1:C:296:LYS:HD3	2.00	0.43
1:A:454:GLN:HB3	1:A:470:MET:CE	2.48	0.43
1:G:445:ASP:OD1	1:G:447:GLN:HB2	2.19	0.43
1:E:249:ASP:OD2	1:E:340:ARG:NH1	2.48	0.43
1:G:275:LYS:HG3	1:G:276:TRP:CD2	2.54	0.43
1:E:278:MET:HE2	1:E:300:ASP:CB	2.45	0.43
1:A:385:ILE:O	1:A:415:CYS:HB3	2.18	0.43
1:A:280:ILE:HG13	1:A:296:LYS:HD3	2.00	0.43
1:G:275:LYS:HG3	1:G:276:TRP:CE2	2.53	0.43

*Continued on next page...*

*Continued from previous page...*

Atom-1	Atom-2	Interatomic distance (Å)	Clash overlap (Å)
1:C:278:MET:HE3	1:C:304:TYR:HB2	2.00	0.43
1:G:454:GLN:HB3	1:G:470:MET:CE	2.48	0.43
1:C:275:LYS:HG3	1:C:276:TRP:CD2	2.54	0.43
1:A:556:LEU:N	1:A:556:LEU:CD1	2.82	0.43
1:E:390:MET:HG2	1:E:540:TRP:CZ3	2.53	0.43
1:G:390:MET:HG2	1:G:540:TRP:CZ3	2.53	0.43
1:E:556:LEU:CD1	1:E:556:LEU:N	2.82	0.43
1:C:40:LEU:O	1:C:41:ARG:HD2	2.19	0.43
1:E:3:LYS:HB3	1:E:115:PRO:HG2	2.01	0.42
1:C:275:LYS:HG3	1:C:276:TRP:CE2	2.53	0.42
1:E:392:TYR:HA	1:E:412:ASN:HB2	2.01	0.42
1:A:40:LEU:O	1:A:41:ARG:CD	2.67	0.42
1:G:255:ILE:HA	1:G:255:ILE:HD12	1.93	0.42
1:C:414:ILE:HG12	1:C:452:LEU:HD12	2.01	0.42
1:A:472:ARG:HB2	1:C:594:TRP:HB2	2.01	0.42
1:E:114:TRP:HA	1:E:115:PRO:HD3	1.85	0.42
1:E:275:LYS:HG3	1:E:276:TRP:CE2	2.53	0.42
1:C:392:TYR:HA	1:C:412:ASN:HB2	2.01	0.42
1:C:556:LEU:CD1	1:C:556:LEU:N	2.82	0.42
1:C:140:THR:HB	2:H:27:LYS:HE2	2.01	0.42
1:E:40:LEU:O	1:E:41:ARG:CD	2.67	0.42
1:E:414:ILE:HG12	1:E:452:LEU:HD12	2.01	0.42
1:G:417:ASP:HB2	1:G:437:ASN:HB3	1.99	0.42
1:A:275:LYS:HA	1:A:276:TRP:HA	1.74	0.42
1:A:275:LYS:HG3	1:A:276:TRP:CD2	2.54	0.42
1:G:279:THR:HG23	1:G:294:TYR:O	2.19	0.42
1:G:40:LEU:O	1:G:41:ARG:HD2	2.19	0.42
1:E:109:ARG:HE	1:E:395:GLN:HG3	1.84	0.42
1:G:249:ASP:OD2	1:G:340:ARG:NH1	2.48	0.42
1:G:3:LYS:HB3	1:G:115:PRO:HG2	2.01	0.42
1:C:3:LYS:HB3	1:C:115:PRO:HG2	2.01	0.42
1:A:276:TRP:O	1:A:279:THR:HB	2.20	0.42
1:E:279:THR:HG23	1:E:294:TYR:O	2.19	0.42
1:C:223:LYS:O	1:C:225:LEU:HD13	2.20	0.42
1:E:304:TYR:O	1:E:305:ALA:C	2.58	0.42
1:A:114:TRP:HA	1:A:115:PRO:HD3	1.85	0.42
1:G:276:TRP:O	1:G:279:THR:HB	2.20	0.42
1:C:279:THR:HG23	1:C:294:TYR:O	2.19	0.42
1:A:445:ASP:OD1	1:A:447:GLN:HB2	2.19	0.42
1:G:280:ILE:HG13	1:G:296:LYS:HD3	2.00	0.42
1:A:3:LYS:HB3	1:A:115:PRO:HG2	2.01	0.42

*Continued on next page...*

*Continued from previous page...*

Atom-1	Atom-2	Interatomic distance (Å)	Clash overlap (Å)
1:C:277:THR:HG23	1:C:277:THR:H	1.50	0.42
1:E:275:LYS:HG3	1:E:276:TRP:CD2	2.54	0.42
1:A:40:LEU:O	1:A:41:ARG:HD2	2.19	0.42
1:A:326:LEU:HD12	1:A:326:LEU:O	2.20	0.42
1:C:296:LYS:HZ2	1:C:328:HIS:CE1	2.37	0.42
1:G:296:LYS:HZ2	1:G:328:HIS:CE1	2.37	0.42
1:C:25:ASN:HA	1:C:25:ASN:HD22	1.46	0.42
1:C:304:TYR:O	1:C:305:ALA:C	2.58	0.42
1:C:12:ASP:CB	1:C:524:THR:O	2.67	0.42
1:A:109:ARG:HE	1:A:395:GLN:HG3	1.84	0.42
1:G:556:LEU:CD1	1:G:556:LEU:N	2.82	0.42
1:E:25:ASN:HD22	1:E:25:ASN:HA	1.46	0.42
1:G:423:LEU:HA	1:G:424:PRO:HD3	1.92	0.42
1:C:140:THR:CG2	2:H:27:LYS:NZ	2.81	0.42
1:C:109:ARG:NE	1:C:395:GLN:HG3	2.35	0.42
1:G:331:ARG:HD2	1:G:391:GLY:HA3	2.02	0.42
1:G:392:TYR:HA	1:G:412:ASN:HB2	2.01	0.42
1:G:114:TRP:CH2	1:G:116:GLY:HA2	2.53	0.41
1:A:331:ARG:HD2	1:A:391:GLY:HA3	2.02	0.41
1:A:392:TYR:HA	1:A:412:ASN:HB2	2.01	0.41
1:C:580:LEU:HA	1:C:580:LEU:HD12	1.87	0.41
1:A:109:ARG:NE	1:A:395:GLN:HG3	2.35	0.41
1:C:243:TRP:CE2	1:C:307:VAL:HG21	2.55	0.41
1:E:276:TRP:O	1:E:279:THR:HB	2.20	0.41
1:C:276:TRP:O	1:C:279:THR:HB	2.20	0.41
1:G:267:GLU:HG3	1:G:301:GLU:HB3	2.02	0.41
1:E:326:LEU:O	1:E:326:LEU:HD12	2.20	0.41
1:A:296:LYS:HZ2	1:A:328:HIS:CE1	2.39	0.41
1:G:140:THR:OG1	1:G:142:GLU:HG2	2.20	0.41
1:G:277:THR:HG23	1:G:277:THR:H	1.50	0.41
1:C:140:THR:OG1	1:C:142:GLU:HG2	2.20	0.41
1:E:494:GLY:O	1:E:511:LYS:HD2	2.20	0.41
1:C:445:ASP:OD1	1:C:447:GLN:HB2	2.19	0.41
1:G:494:GLY:O	1:G:511:LYS:HD2	2.20	0.41
1:E:243:TRP:CE2	1:E:307:VAL:HG21	2.55	0.41
1:A:414:ILE:HG12	1:A:452:LEU:HD12	2.01	0.41
1:G:243:TRP:CE2	1:G:307:VAL:HG21	2.55	0.41
1:C:114:TRP:CH2	1:C:116:GLY:HA2	2.53	0.41
1:C:423:LEU:HA	1:C:424:PRO:HD3	1.92	0.41
1:E:4:LEU:HA	1:E:4:LEU:HD23	1.88	0.41
1:E:331:ARG:HD2	1:E:391:GLY:HA3	2.02	0.41

*Continued on next page...*

*Continued from previous page...*

Atom-1	Atom-2	Interatomic distance (Å)	Clash overlap (Å)
2:B:29:ASP:HA	2:B:30:PRO:HD3	1.91	0.41
1:E:445:ASP:OD1	1:E:447:GLN:HB2	2.19	0.41
1:G:414:ILE:HG12	1:G:452:LEU:HD12	2.01	0.41
1:G:223:LYS:O	1:G:225:LEU:HD13	2.20	0.41
1:G:12:ASP:CB	1:G:524:THR:O	2.67	0.41
1:E:109:ARG:NE	1:E:395:GLN:HG3	2.35	0.41
1:A:243:TRP:CE2	1:A:307:VAL:HG21	2.55	0.41
1:C:494:GLY:O	1:C:511:LYS:HD2	2.21	0.41
1:E:229:THR:HG1	1:E:275:LYS:HB2	1.84	0.41
1:C:37:VAL:CG2	1:C:486:LEU:HD21	2.48	0.41
1:C:267:GLU:HG3	1:C:301:GLU:HB3	2.02	0.41
1:A:296:LYS:HE3	1:A:296:LYS:HB2	1.78	0.41
1:A:114:TRP:CH2	1:A:116:GLY:HA2	2.53	0.41
1:A:223:LYS:O	1:A:225:LEU:HD13	2.20	0.41
1:E:223:LYS:O	1:E:225:LEU:HD13	2.20	0.41
1:C:326:LEU:HD12	1:C:326:LEU:O	2.20	0.41
1:A:333:GLY:C	1:A:351:LEU:HD12	2.41	0.41
1:E:333:GLY:C	1:E:351:LEU:HD12	2.41	0.41
1:E:454:GLN:HB3	1:E:470:MET:HE1	2.02	0.41
1:G:304:TYR:O	1:G:305:ALA:C	2.58	0.41
1:G:109:ARG:NE	1:G:395:GLN:HG3	2.35	0.41
1:E:267:GLU:HG3	1:E:301:GLU:HB3	2.02	0.41
2:F:29:ASP:HA	2:F:30:PRO:HD3	1.91	0.41
1:G:326:LEU:O	1:G:326:LEU:HD12	2.20	0.41
1:A:140:THR:OG1	1:A:142:GLU:HG2	2.20	0.41
2:F:44:ILE:O	2:F:48:GLU:HG3	2.20	0.41
1:E:588:ASP:HA	1:E:589:PRO:HD2	1.90	0.41
2:D:44:ILE:O	2:D:48:GLU:HG3	2.21	0.41
1:C:333:GLY:C	1:C:351:LEU:HD12	2.41	0.41
1:A:304:TYR:O	1:A:305:ALA:C	2.58	0.41
1:C:14:TRP:CZ3	1:C:19:LYS:HD2	2.56	0.41
2:H:44:ILE:O	2:H:48:GLU:HG3	2.20	0.41
1:A:267:GLU:HG3	1:A:301:GLU:HB3	2.02	0.40
1:A:494:GLY:O	1:A:511:LYS:HD2	2.20	0.40
2:B:44:ILE:O	2:B:48:GLU:HG3	2.21	0.40
1:A:249:ASP:OD2	1:A:340:ARG:NH1	2.48	0.40
1:G:229:THR:HG1	1:G:275:LYS:HB2	1.85	0.40
1:C:265:TRP:CH2	1:C:556:LEU:HD23	2.56	0.40
1:A:14:TRP:CZ3	1:A:19:LYS:HD2	2.56	0.40
1:E:140:THR:OG1	1:E:142:GLU:HG2	2.20	0.40
1:A:423:LEU:HA	1:A:424:PRO:HD3	1.92	0.40

*Continued on next page...*



*Continued from previous page...*

Atom-1	Atom-2	Interatomic distance (Å)	Clash overlap (Å)
1:E:117:ASP:CG	1:E:118:GLY:H	2.25	0.40
1:G:275:LYS:HA	1:G:276:TRP:HA	1.74	0.40
1:A:12:ASP:CB	1:A:524:THR:O	2.67	0.40
1:A:117:ASP:CG	1:A:118:GLY:H	2.25	0.40
1:C:331:ARG:HD2	1:C:391:GLY:HA3	2.02	0.40
1:E:12:ASP:CB	1:E:524:THR:O	2.67	0.40
1:E:265:TRP:CH2	1:E:556:LEU:HD23	2.56	0.40
1:A:265:TRP:CH2	1:A:556:LEU:HD23	2.56	0.40

There are no symmetry-related clashes.

## 5.3 Torsion angles

### 5.3.1 Protein backbone

In the following table, the Percentiles column shows the percent Ramachandran outliers of the chain as a percentile score with respect to all X-ray entries followed by that with respect to entries of similar resolution.

The Analysed column shows the number of residues for which the backbone conformation was analysed, and the total number of residues.

Mol	Chain	Analysed	Favoured	Allowed	Outliers	Percentiles	
1	A	593/599 (99%)	540 (91%)	51 (9%)	2 (0%)	46	84
1	C	593/599 (99%)	540 (91%)	51 (9%)	2 (0%)	46	84
1	E	593/599 (99%)	540 (91%)	51 (9%)	2 (0%)	46	84
1	G	593/599 (99%)	540 (91%)	51 (9%)	2 (0%)	46	84
2	B	70/74 (95%)	68 (97%)	2 (3%)	0	100	100
2	D	70/74 (95%)	68 (97%)	2 (3%)	0	100	100
2	F	70/74 (95%)	68 (97%)	2 (3%)	0	100	100
2	H	70/74 (95%)	68 (97%)	2 (3%)	0	100	100
All	All	2652/2692 (98%)	2432 (92%)	212 (8%)	8 (0%)	46	84

All (8) Ramachandran outliers are listed below:

Mol	Chain	Res	Type
1	A	118	GLY
1	C	118	GLY

*Continued on next page...*

*Continued from previous page...*

Mol	Chain	Res	Type
1	E	118	GLY
1	G	118	GLY
1	A	589	PRO
1	C	589	PRO
1	E	589	PRO
1	G	589	PRO

### 5.3.2 Protein sidechains ⓘ

In the following table, the Percentiles column shows the percent sidechain outliers of the chain as a percentile score with respect to all X-ray entries followed by that with respect to entries of similar resolution.

The Analysed column shows the number of residues for which the sidechain conformation was analysed, and the total number of residues.

Mol	Chain	Analysed	Rotameric	Outliers	Percentiles	
1	A	476/478 (100%)	453 (95%)	23 (5%)	31	71
1	C	476/478 (100%)	453 (95%)	23 (5%)	31	71
1	E	476/478 (100%)	453 (95%)	23 (5%)	31	71
1	G	476/478 (100%)	453 (95%)	23 (5%)	31	71
2	B	62/63 (98%)	57 (92%)	5 (8%)	15	47
2	D	62/63 (98%)	57 (92%)	5 (8%)	15	47
2	F	62/63 (98%)	57 (92%)	5 (8%)	15	47
2	H	62/63 (98%)	57 (92%)	5 (8%)	15	47
All	All	2152/2164 (99%)	2040 (95%)	112 (5%)	29	68

All (112) residues with a non-rotameric sidechain are listed below:

Mol	Chain	Res	Type
1	A	3	LYS
1	A	12	ASP
1	A	25	ASN
1	A	38	LYS
1	A	80	LEU
1	A	87	LEU
1	A	119	LYS
1	A	129	LEU
1	A	153	LYS

*Continued on next page...*

*Continued from previous page...*

Mol	Chain	Res	Type
1	A	177	GLU
1	A	274	ASN
1	A	303	GLU
1	A	321	LYS
1	A	326	LEU
1	A	338	LEU
1	A	364	LYS
1	A	373	GLU
1	A	395	GLN
1	A	403	LYS
1	A	435	THR
1	A	486	LEU
1	A	580	LEU
1	A	595	LYS
2	B	35	LYS
2	B	45	LYS
2	B	49	GLU
2	B	60	LYS
2	B	63	LYS
1	C	3	LYS
1	C	12	ASP
1	C	25	ASN
1	C	38	LYS
1	C	80	LEU
1	C	87	LEU
1	C	119	LYS
1	C	129	LEU
1	C	153	LYS
1	C	177	GLU
1	C	274	ASN
1	C	303	GLU
1	C	321	LYS
1	C	326	LEU
1	C	338	LEU
1	C	364	LYS
1	C	373	GLU
1	C	395	GLN
1	C	403	LYS
1	C	435	THR
1	C	486	LEU
1	C	580	LEU
1	C	595	LYS

*Continued on next page...*

*Continued from previous page...*

Mol	Chain	Res	Type
2	D	35	LYS
2	D	45	LYS
2	D	49	GLU
2	D	60	LYS
2	D	63	LYS
1	E	3	LYS
1	E	12	ASP
1	E	25	ASN
1	E	38	LYS
1	E	80	LEU
1	E	87	LEU
1	E	119	LYS
1	E	129	LEU
1	E	153	LYS
1	E	177	GLU
1	E	274	ASN
1	E	303	GLU
1	E	321	LYS
1	E	326	LEU
1	E	338	LEU
1	E	364	LYS
1	E	373	GLU
1	E	395	GLN
1	E	403	LYS
1	E	435	THR
1	E	486	LEU
1	E	580	LEU
1	E	595	LYS
2	F	35	LYS
2	F	45	LYS
2	F	49	GLU
2	F	60	LYS
2	F	63	LYS
1	G	3	LYS
1	G	12	ASP
1	G	25	ASN
1	G	38	LYS
1	G	80	LEU
1	G	87	LEU
1	G	119	LYS
1	G	129	LEU
1	G	153	LYS

*Continued on next page...*

*Continued from previous page...*

Mol	Chain	Res	Type
1	G	177	GLU
1	G	274	ASN
1	G	303	GLU
1	G	321	LYS
1	G	326	LEU
1	G	338	LEU
1	G	364	LYS
1	G	373	GLU
1	G	395	GLN
1	G	403	LYS
1	G	435	THR
1	G	486	LEU
1	G	580	LEU
1	G	595	LYS
2	H	35	LYS
2	H	45	LYS
2	H	49	GLU
2	H	60	LYS
2	H	63	LYS

Some sidechains can be flipped to improve hydrogen bonding and reduce clashes. All (20) such sidechains are listed below:

Mol	Chain	Res	Type
1	A	25	ASN
1	A	74	ASN
1	A	349	ASN
1	A	429	GLN
1	A	567	ASN
1	C	25	ASN
1	C	74	ASN
1	C	349	ASN
1	C	429	GLN
1	C	567	ASN
1	E	25	ASN
1	E	74	ASN
1	E	349	ASN
1	E	429	GLN
1	E	567	ASN
1	G	25	ASN
1	G	74	ASN
1	G	349	ASN
1	G	429	GLN

*Continued on next page...*

*Continued from previous page...*

Mol	Chain	Res	Type
1	G	567	ASN

### 5.3.3 RNA [i](#)

There are no RNA molecules in this entry.

## 5.4 Non-standard residues in protein, DNA, RNA chains [i](#)

There are no non-standard protein/DNA/RNA residues in this entry.

## 5.5 Carbohydrates [i](#)

There are no carbohydrates in this entry.

## 5.6 Ligand geometry [i](#)

Of 8 ligands modelled in this entry, 4 are monoatomic - leaving 4 for Mogul analysis.

In the following table, the Counts columns list the number of bonds (or angles) for which Mogul statistics could be retrieved, the number of bonds (or angles) that are observed in the model and the number of bonds (or angles) that are defined in the chemical component dictionary. The Link column lists molecule types, if any, to which the group is linked. The Z score for a bond length (or angle) is the number of standard deviations the observed value is removed from the expected value. A bond length (or angle) with  $|Z| > 2$  is considered an outlier worth inspection. RMSZ is the root-mean-square of all Z scores of the bond lengths (or angles).

Mol	Type	Chain	Res	Link	Bond lengths			Bond angles		
					Counts	RMSZ	$\# Z  > 2$	Counts	RMSZ	$\# Z  > 2$
3	PQQ	A	601	4	16,26,26	3.43	8 (50%)	17,40,40	3.27	10 (58%)
3	PQQ	C	601	4	16,26,26	3.43	8 (50%)	17,40,40	3.26	10 (58%)
3	PQQ	E	601	4	16,26,26	3.44	8 (50%)	17,40,40	3.27	10 (58%)
3	PQQ	G	601	4	16,26,26	3.44	8 (50%)	17,40,40	3.28	10 (58%)

In the following table, the Chirals column lists the number of chiral outliers, the number of chiral centers analysed, the number of these observed in the model and the number defined in the chemical component dictionary. Similar counts are reported in the Torsion and Rings columns. '-' means no outliers of that kind were identified.

Mol	Type	Chain	Res	Link	Chirals	Torsions	Rings
3	PQQ	A	601	4	-	0/0/28/28	0/3/3/3
3	PQQ	C	601	4	-	0/0/28/28	0/3/3/3
3	PQQ	E	601	4	-	0/0/28/28	0/3/3/3
3	PQQ	G	601	4	-	0/0/28/28	0/3/3/3

All (32) bond length outliers are listed below:

Mol	Chain	Res	Type	Atoms	Z	Observed(Å)	Ideal(Å)
3	G	601	PQQ	O4-C4	-2.88	1.17	1.23
3	C	601	PQQ	O4-C4	-2.87	1.17	1.23
3	A	601	PQQ	O4-C4	-2.87	1.17	1.23
3	E	601	PQQ	O4-C4	-2.86	1.17	1.23
3	G	601	PQQ	C3-C2	-2.58	1.35	1.40
3	A	601	PQQ	C3-C2	-2.55	1.35	1.40
3	E	601	PQQ	C3-C2	-2.54	1.35	1.40
3	C	601	PQQ	C3-C2	-2.50	1.35	1.40
3	E	601	PQQ	C8-C7	2.14	1.42	1.39
3	C	601	PQQ	C8-C7	2.15	1.42	1.39
3	A	601	PQQ	C8-C7	2.16	1.42	1.39
3	G	601	PQQ	C8-C7	2.19	1.42	1.39
3	G	601	PQQ	C8-C9	3.41	1.45	1.39
3	A	601	PQQ	C7-N6	3.43	1.39	1.34
3	E	601	PQQ	C8-C9	3.44	1.45	1.39
3	A	601	PQQ	C8-C9	3.45	1.45	1.39
3	G	601	PQQ	C7-N6	3.45	1.39	1.34
3	C	601	PQQ	C8-C9	3.45	1.45	1.39
3	E	601	PQQ	C7-N6	3.46	1.39	1.34
3	C	601	PQQ	C7-N6	3.47	1.39	1.34
3	E	601	PQQ	C9-C9A	4.02	1.49	1.41
3	C	601	PQQ	C9-C9A	4.03	1.49	1.41
3	G	601	PQQ	C9-C9A	4.04	1.49	1.41
3	A	601	PQQ	C9-C9A	4.04	1.49	1.41
3	A	601	PQQ	C6A-C5	5.97	1.56	1.49
3	C	601	PQQ	C6A-C5	5.98	1.56	1.49
3	G	601	PQQ	C6A-C5	5.99	1.56	1.49
3	E	601	PQQ	C6A-C5	6.00	1.56	1.49
3	C	601	PQQ	C9A-C6A	9.20	1.50	1.40
3	E	601	PQQ	C9A-C6A	9.24	1.50	1.40
3	A	601	PQQ	C9A-C6A	9.24	1.50	1.40
3	G	601	PQQ	C9A-C6A	9.25	1.50	1.40

All (40) bond angle outliers are listed below:

Mol	Chain	Res	Type	Atoms	Z	Observed(°)	Ideal(°)
3	G	601	PQQ	O4-C4-C5	-5.42	111.01	119.29
3	C	601	PQQ	O4-C4-C5	-5.40	111.04	119.29
3	A	601	PQQ	O4-C4-C5	-5.40	111.04	119.29
3	E	601	PQQ	O4-C4-C5	-5.38	111.08	119.29
3	G	601	PQQ	C6A-C5-C4	-2.94	115.59	119.16
3	A	601	PQQ	C6A-C5-C4	-2.93	115.60	119.16
3	C	601	PQQ	C6A-C5-C4	-2.91	115.62	119.16
3	E	601	PQQ	C6A-C5-C4	-2.90	115.63	119.16
3	E	601	PQQ	C6A-C9A-C1A	-2.62	114.43	118.21
3	A	601	PQQ	C6A-C9A-C1A	-2.62	114.44	118.21
3	G	601	PQQ	C6A-C9A-C1A	-2.61	114.45	118.21
3	C	601	PQQ	C6A-C9A-C1A	-2.61	114.45	118.21
3	E	601	PQQ	O4-C4-C3A	-2.49	117.36	121.55
3	A	601	PQQ	O4-C4-C3A	-2.48	117.37	121.55
3	G	601	PQQ	O4-C4-C3A	-2.48	117.39	121.55
3	C	601	PQQ	O4-C4-C3A	-2.46	117.42	121.55
3	E	601	PQQ	C3A-C4-C5	2.24	120.97	118.08
3	G	601	PQQ	C3A-C4-C5	2.24	120.97	118.08
3	C	601	PQQ	C3A-C4-C5	2.25	120.98	118.08
3	A	601	PQQ	C3A-C4-C5	2.25	120.99	118.08
3	C	601	PQQ	C9A-C6A-C5	2.77	123.41	120.85
3	E	601	PQQ	C9A-C6A-C5	2.79	123.42	120.85
3	A	601	PQQ	C9A-C6A-C5	2.80	123.44	120.85
3	G	601	PQQ	C9A-C6A-C5	2.81	123.44	120.85
3	C	601	PQQ	C3A-C3-C2	2.86	107.92	105.98
3	A	601	PQQ	C3A-C3-C2	2.89	107.94	105.98
3	E	601	PQQ	C3A-C3-C2	2.90	107.95	105.98
3	G	601	PQQ	C3A-C3-C2	2.91	107.96	105.98
3	E	601	PQQ	C9A-C1A-N1	3.10	130.33	124.29
3	C	601	PQQ	C9A-C1A-N1	3.11	130.34	124.29
3	A	601	PQQ	C9A-C1A-N1	3.11	130.34	124.29
3	G	601	PQQ	C9A-C1A-N1	3.13	130.37	124.29
3	E	601	PQQ	O5-C5-C6A	4.47	127.07	122.10
3	C	601	PQQ	O5-C5-C6A	4.49	127.09	122.10
3	G	601	PQQ	O5-C5-C6A	4.49	127.09	122.10
3	A	601	PQQ	O5-C5-C6A	4.49	127.09	122.10
3	A	601	PQQ	C9-C9A-C1A	8.59	130.68	123.27
3	C	601	PQQ	C9-C9A-C1A	8.60	130.69	123.27
3	E	601	PQQ	C9-C9A-C1A	8.61	130.69	123.27
3	G	601	PQQ	C9-C9A-C1A	8.61	130.70	123.27

There are no chirality outliers.

There are no torsion outliers.



There are no ring outliers.

4 monomers are involved in 4 short contacts:

Mol	Chain	Res	Type	Clashes	Symm-Clashes
3	A	601	PQQ	1	0
3	C	601	PQQ	1	0
3	E	601	PQQ	1	0
3	G	601	PQQ	1	0

## 5.7 Other polymers [i](#)

There are no such residues in this entry.

## 5.8 Polymer linkage issues [i](#)

There are no chain breaks in this entry.

## 6 Fit of model and data ⓘ

### 6.1 Protein, DNA and RNA chains ⓘ

In the following table, the column labelled ‘#RSRZ> 2’ contains the number (and percentage) of RSRZ outliers, followed by percent RSRZ outliers for the chain as percentile scores relative to all X-ray entries and entries of similar resolution. The OWAB column contains the minimum, median, 95<sup>th</sup> percentile and maximum values of the occupancy-weighted average B-factor per residue. The column labelled ‘Q< 0.9’ lists the number of (and percentage) of residues with an average occupancy less than 0.9.

Mol	Chain	Analysed	<RSRZ>	#RSRZ>2	OWAB(Å <sup>2</sup> )	Q<0.9
1	A	595/599 (99%)	-0.52	0 100 100	12, 18, 29, 46	17 (2%)
1	C	595/599 (99%)	-0.46	1 (0%) 95 87	12, 18, 29, 46	17 (2%)
1	E	595/599 (99%)	-0.51	1 (0%) 95 87	12, 18, 29, 46	17 (2%)
1	G	595/599 (99%)	-0.43	1 (0%) 95 87	12, 18, 29, 46	17 (2%)
2	B	72/74 (97%)	-0.15	0 100 100	18, 27, 35, 45	10 (13%)
2	D	72/74 (97%)	0.14	2 (2%) 56 27	18, 27, 35, 45	10 (13%)
2	F	72/74 (97%)	0.08	1 (1%) 78 51	18, 27, 35, 45	10 (13%)
2	H	72/74 (97%)	0.27	2 (2%) 56 27	18, 27, 35, 45	10 (13%)
All	All	2668/2692 (99%)	-0.42	8 (0%) 94 84	12, 18, 31, 46	108 (4%)

All (8) RSRZ outliers are listed below:

Mol	Chain	Res	Type	RSRZ
2	D	72	SER	3.9
2	D	71	ILE	2.6
2	F	72	SER	2.6
2	H	72	SER	2.5
1	E	550	ALA	2.4
1	C	551	ASP	2.2
1	G	550	ALA	2.2
2	H	57	ASN	2.1

### 6.2 Non-standard residues in protein, DNA, RNA chains ⓘ

There are no non-standard protein/DNA/RNA residues in this entry.

### 6.3 Carbohydrates [i](#)

There are no carbohydrates in this entry.

### 6.4 Ligands [i](#)

In the following table, the Atoms column lists the number of modelled atoms in the group and the number defined in the chemical component dictionary. LLDF column lists the quality of electron density of the group with respect to its neighbouring residues in protein, DNA or RNA chains. The B-factors column lists the minimum, median, 95<sup>th</sup> percentile and maximum values of B factors of atoms in the group. The column labelled 'Q< 0.9' lists the number of atoms with occupancy less than 0.9.

Mol	Type	Chain	Res	Atoms	RSCC	RSR	LLDF	B-factors( $\text{\AA}^2$ )	Q<0.9
3	PQQ	E	601	24/24	0.92	0.20	1.23	29,29,29,29	0
3	PQQ	G	601	24/24	0.92	0.18	0.49	29,29,29,29	0
3	PQQ	A	601	24/24	0.95	0.16	-0.20	29,29,29,29	0
3	PQQ	C	601	24/24	0.94	0.17	-0.31	29,29,29,29	0
4	CA	G	701	1/1	0.92	0.09	-1.92	18,18,18,18	0
4	CA	C	701	1/1	0.90	0.09	-2.25	18,18,18,18	0
4	CA	E	701	1/1	0.90	0.10	-2.79	18,18,18,18	0
4	CA	A	701	1/1	0.97	0.06	-3.09	18,18,18,18	0

### 6.5 Other polymers [i](#)

There are no such residues in this entry.