



wwPDB X-ray Structure Validation Summary Report ⓘ

Jan 31, 2016 – 07:46 PM GMT

PDB ID : 1H5N
Title : DMSO REDUCTASE MODIFIED BY THE PRESENCE OF DMS AND AIR
Authors : Bailey, S.; Adams, B.; Smith, A.T.; Richards, R.L.; Lowe, D.J.; Bray, R.C.
Deposited on : 2001-05-22
Resolution : 2.00 Å(reported)

This is a wwPDB X-ray Structure Validation Summary Report for a publicly released PDB entry.
We welcome your comments at validation@mail.wwpdb.org
A user guide is available at
<http://wwpdb.org/validation/2016/XrayValidationReportHelp>
with specific help available everywhere you see the ⓘ symbol.

The following versions of software and data (see [references ⓘ](#)) were used in the production of this report:

MolProbity : 4.02b-467
Mogul : 1.7 (RC4), CSD as536be (2015)
Xtriage (Phenix) : **NOT EXECUTED**
EDS : **NOT EXECUTED**
Percentile statistics : 20151230.v01 (using entries in the PDB archive December 30th 2015)
Ideal geometry (proteins) : Engh & Huber (2001)
Ideal geometry (DNA, RNA) : Parkinson et al. (1996)
Validation Pipeline (wwPDB-VP) : trunk26865

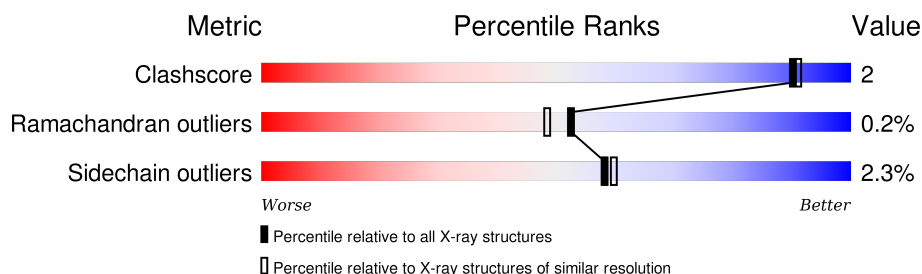
1 Overall quality at a glance

The following experimental techniques were used to determine the structure:

X-RAY DIFFRACTION

The reported resolution of this entry is 2.00 Å.

Percentile scores (ranging between 0-100) for global validation metrics of the entry are shown in the following graphic. The table shows the number of entries on which the scores are based.



Metric	Whole archive (#Entries)	Similar resolution (#Entries, resolution range(Å))
Clashscore	102246	7340 (2.00-2.00)
Ramachandran outliers	100387	7248 (2.00-2.00)
Sidechain outliers	100360	7247 (2.00-2.00)

The table below summarises the geometric issues observed across the polymeric chains and their fit to the electron density. The red, orange, yellow and green segments on the lower bar indicate the fraction of residues that contain outliers for ≥ 3 , 2, 1 and 0 types of geometric quality criteria. A grey segment represents the fraction of residues that are not modelled. The numeric value for each fraction is indicated below the corresponding segment, with a dot representing fractions $\leq 5\%$. The upper red bar (where present) indicates the fraction of residues that have poor fit to the electron density. The numeric value is given above the bar.

Note EDS was not executed.

Mol	Chain	Length	Quality of chain
1	A	823	
1	C	823	

2 Entry composition

There are 5 unique types of molecules in this entry. The entry contains 13178 atoms, of which 0 are hydrogens and 0 are deuteriums.

In the tables below, the ZeroOcc column contains the number of atoms modelled with zero occupancy, the AltConf column contains the number of residues with at least one atom in alternate conformation and the Trace column contains the number of residues modelled with at most 2 atoms.

- Molecule 1 is a protein called DMSO REDUCTASE.

Mol	Chain	Residues	Atoms					ZeroOcc	AltConf	Trace
1	A	765	Total	C	N	O	S	0	0	0
			5867	3730	994	1116	27			
1	C	766	Total	C	N	O	S	0	0	0
			5877	3737	995	1118	27			

There are 26 discrepancies between the modelled and reference sequences:

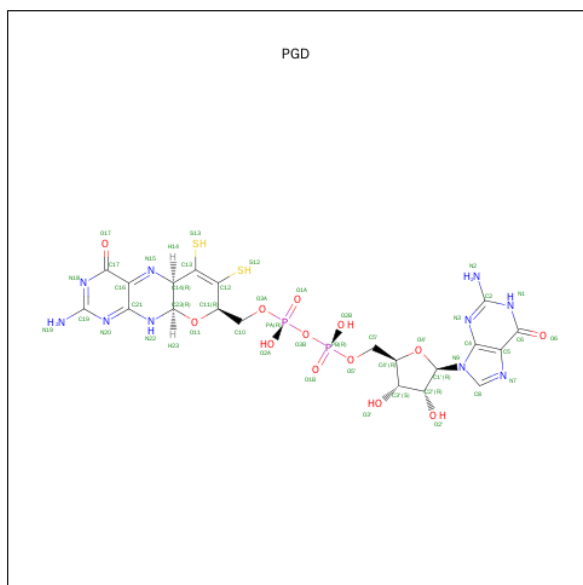
Chain	Residue	Modelled	Actual	Comment	Reference
A	39	SER	THR	SEQUENCED FROM MAP	UNP Q52675
A	43	ALA	GLU	SEQUENCED FROM MAP	UNP Q52675
A	107	GLU	GLN	SEQUENCED FROM MAP	UNP Q52675
A	234	GLU	ASP	SEQUENCED FROM MAP	UNP Q52675
A	236	ILE	VAL	SEQUENCED FROM MAP	UNP Q52675
A	280	ASP	MET	SEQUENCED FROM MAP	UNP Q52675
A	294	GLU	SER	SEQUENCED FROM MAP	UNP Q52675
A	295	GLY	ASP	SEQUENCED FROM MAP	UNP Q52675
A	312	GLU	ILE	SEQUENCED FROM MAP	UNP Q52675
A	374	ALA	SER	SEQUENCED FROM MAP	UNP Q52675
A	456	VAL	ILE	SEQUENCED FROM MAP	UNP Q52675
A	526	ALA	LYS	SEQUENCED FROM MAP	UNP Q52675
A	555	GLN	GLU	SEQUENCED FROM MAP	UNP Q52675
C	39	SER	THR	SEQUENCED FROM MAP	UNP Q52675
C	43	ALA	GLU	SEQUENCED FROM MAP	UNP Q52675
C	107	GLU	GLN	SEQUENCED FROM MAP	UNP Q52675
C	234	GLU	ASP	SEQUENCED FROM MAP	UNP Q52675
C	236	ILE	VAL	SEQUENCED FROM MAP	UNP Q52675
C	280	ASP	MET	SEQUENCED FROM MAP	UNP Q52675
C	294	GLU	SER	SEQUENCED FROM MAP	UNP Q52675
C	295	GLY	ASP	SEQUENCED FROM MAP	UNP Q52675
C	312	GLU	ILE	SEQUENCED FROM MAP	UNP Q52675
C	374	ALA	SER	SEQUENCED FROM MAP	UNP Q52675
C	456	VAL	ILE	SEQUENCED FROM MAP	UNP Q52675
C	526	ALA	LYS	SEQUENCED FROM MAP	UNP Q52675

Continued on next page...

Continued from previous page...

Chain	Residue	Modelled	Actual	Comment	Reference
C	555	GLN	GLU	SEQUENCED FROM MAP	UNP Q52675

- Molecule 2 is 2-AMINO-5,6-DIMERCAPTO-7-METHYL-3,7,8A,9-TETRAHYDRO-8-OXA-1,3,9,10-TETRAAZA-ANTHRACEN-4-ONE GUANOSINE DINUCLEOTIDE (three-letter code: PGD) (formula: C₂₀H₂₄N₁₀O₁₃P₂S₂).



Mol	Chain	Residues	Atoms						ZeroOcc	AltConf
2	A	1	Total	C	N	O	P	S	0	0
			47	20	10	13	2	2		
2	A	1	Total	C	N	O	P	S	0	0
			47	20	10	13	2	2		
2	C	1	Total	C	N	O	P	S	0	0
			47	20	10	13	2	2		
2	C	1	Total	C	N	O	P	S	0	0
			47	20	10	13	2	2		

- Molecule 3 is MOLYBDENUM(VI) ION (three-letter code: 6MO) (formula: Mo).

Mol	Chain	Residues	Atoms		ZeroOcc	AltConf
3	A	1	Total	Mo	0	0
			1	1		
3	C	1	Total	Mo	0	0
			1	1		

- Molecule 4 is SULFATE ION (three-letter code: SO4) (formula: O₄S).



Mol	Chain	Residues	Atoms			ZeroOcc	AltConf
4	A	1	Total	O	S	0	0
			5	4	1		
4	C	1	Total	O	S	0	0
			5	4	1		

- Molecule 5 is water.

Mol	Chain	Residues	Atoms		ZeroOcc	AltConf
5	A	652	Total	O	0	0
			652	652		
5	C	582	Total	O	0	0
			582	582		

4 Data and refinement statistics

Xtriage (Phenix) and EDS were not executed - this section will therefore be incomplete.

Property	Value	Source
Space group	P 21 21 21	Depositor
Cell constants a, b, c, α , β , γ	68.80 Å 116.10 Å 230.40 Å 90.00° 90.00° 90.00°	Depositor
Resolution (Å)	20.00 – 2.00	Depositor
% Data completeness (in resolution range)	83.7 (20.00-2.00)	Depositor
R_{merge}	0.04	Depositor
R_{sym}	(Not available)	Depositor
Refinement program	REFMAC	Depositor
R, R_{free}	0.158 , 0.209	Depositor
Estimated twinning fraction	No twinning to report.	Xtriage
Total number of atoms	13178	wwPDB-VP
Average B, all atoms (Å ²)	16.0	wwPDB-VP

5 Model quality ⓘ

5.1 Standard geometry ⓘ

Bond lengths and bond angles in the following residue types are not validated in this section: 6MO, PGD, SO4

The Z score for a bond length (or angle) is the number of standard deviations the observed value is removed from the expected value. A bond length (or angle) with $|Z| > 5$ is considered an outlier worth inspection. RMSZ is the root-mean-square of all Z scores of the bond lengths (or angles).

Mol	Chain	Bond lengths		Bond angles	
		RMSZ	# Z >5	RMSZ	# Z >5
1	A	0.67	1/6024 (0.0%)	1.35	49/8198 (0.6%)
1	C	0.64	1/6034 (0.0%)	1.34	50/8213 (0.6%)
All	All	0.66	2/12058 (0.0%)	1.34	99/16411 (0.6%)

All (2) bond length outliers are listed below:

Mol	Chain	Res	Type	Atoms	Z	Observed(Å)	Ideal(Å)
1	A	312	GLU	CD-OE1	-10.26	1.14	1.25
1	C	312	GLU	CD-OE1	-5.32	1.19	1.25

The worst 5 of 99 bond angle outliers are listed below:

Mol	Chain	Res	Type	Atoms	Z	Observed(°)	Ideal(°)
1	C	62	ARG	NE-CZ-NH2	-21.09	109.75	120.30
1	C	130	ARG	NE-CZ-NH1	-17.14	111.73	120.30
1	C	83	ARG	NE-CZ-NH1	15.10	127.85	120.30
1	A	62	ARG	NE-CZ-NH2	-14.14	113.23	120.30
1	A	224	ARG	NE-CZ-NH2	13.97	127.28	120.30

There are no chirality outliers.

There are no planarity outliers.

5.2 Too-close contacts ⓘ

In the following table, the Non-H and H(model) columns list the number of non-hydrogen atoms and hydrogen atoms in the chain respectively. The H(added) column lists the number of hydrogen atoms added and optimized by MolProbity. The Clashes column lists the number of clashes within the asymmetric unit, whereas Symm-Clashes lists symmetry related clashes.

Mol	Chain	Non-H	H(model)	H(added)	Clashes	Symm-Clashes
1	A	5867	0	5668	25	0
1	C	5877	0	5677	28	0
2	A	94	0	40	1	0
2	C	94	0	40	2	0
3	A	1	0	0	0	0
3	C	1	0	0	0	0
4	A	5	0	0	0	0
4	C	5	0	0	0	0
5	A	652	0	0	7	0
5	C	582	0	0	4	0
All	All	13178	0	11425	53	0

The all-atom clashscore is defined as the number of clashes found per 1000 atoms (including hydrogen atoms). The all-atom clashscore for this structure is 2.

The worst 5 of 53 close contacts within the same asymmetric unit are listed below, sorted by their clash magnitude.

Atom-1	Atom-2	Interatomic distance (Å)	Clash overlap (Å)
1:C:189:ILE:HD12	1:C:227:THR:HA	1.54	0.89
1:A:407:GLU:OE1	1:A:444:ARG:NH2	2.07	0.88
1:A:671:MET:HE1	1:A:761:VAL:HG11	1.65	0.76
1:A:147:SER:HA	2:A:1782:PGD:S13	2.28	0.73
1:A:149:GLY:HA2	5:A:2159:HOH:O	1.89	0.72

There are no symmetry-related clashes.

5.3 Torsion angles [i](#)

5.3.1 Protein backbone [i](#)

In the following table, the Percentiles column shows the percent Ramachandran outliers of the chain as a percentile score with respect to all X-ray entries followed by that with respect to entries of similar resolution.

The Analysed column shows the number of residues for which the backbone conformation was analysed, and the total number of residues.

Mol	Chain	Analysed	Favoured	Allowed	Outliers	Percentiles	
1	A	761/823 (92%)	735 (97%)	24 (3%)	2 (0%)	46	41
1	C	762/823 (93%)	740 (97%)	21 (3%)	1 (0%)	56	53
All	All	1523/1646 (92%)	1475 (97%)	45 (3%)	3 (0%)	52	48

All (3) Ramachandran outliers are listed below:

Mol	Chain	Res	Type
1	A	117	LYS
1	A	734	GLY
1	C	734	GLY

5.3.2 Protein sidechains ⓘ

In the following table, the Percentiles column shows the percent sidechain outliers of the chain as a percentile score with respect to all X-ray entries followed by that with respect to entries of similar resolution.

The Analysed column shows the number of residues for which the sidechain conformation was analysed, and the total number of residues.

Mol	Chain	Analysed	Rotameric	Outliers	Percentiles	
1	A	607/648 (94%)	597 (98%)	10 (2%)	70	73
1	C	608/648 (94%)	590 (97%)	18 (3%)	48	47
All	All	1215/1296 (94%)	1187 (98%)	28 (2%)	58	60

5 of 28 residues with a non-rotameric sidechain are listed below:

Mol	Chain	Res	Type
1	C	161	THR
1	C	307	LEU
1	C	703	THR
1	C	200	GLU
1	C	226	LYS

Some sidechains can be flipped to improve hydrogen bonding and reduce clashes. 5 of 7 such sidechains are listed below:

Mol	Chain	Res	Type
1	C	241	GLN
1	C	653	ASN
1	C	408	ASN
1	A	653	ASN
1	C	606	ASN

5.3.3 RNA ⓘ

There are no RNA molecules in this entry.

5.4 Non-standard residues in protein, DNA, RNA chains ⓘ

There are no non-standard protein/DNA/RNA residues in this entry.

5.5 Carbohydrates ⓘ

There are no carbohydrates in this entry.

5.6 Ligand geometry ⓘ

Of 8 ligands modelled in this entry, 2 are monoatomic - leaving 6 for Mogul analysis.

In the following table, the Counts columns list the number of bonds (or angles) for which Mogul statistics could be retrieved, the number of bonds (or angles) that are observed in the model and the number of bonds (or angles) that are defined in the chemical component dictionary. The Link column lists molecule types, if any, to which the group is linked. The Z score for a bond length (or angle) is the number of standard deviations the observed value is removed from the expected value. A bond length (or angle) with $|Z| > 2$ is considered an outlier worth inspection. RMSZ is the root-mean-square of all Z scores of the bond lengths (or angles).

Mol	Type	Chain	Res	Link	Bond lengths			Bond angles		
					Counts	RMSZ	# Z > 2	Counts	RMSZ	# Z > 2
2	PGD	A	1782	3	34,52,52	2.58	13 (38%)	39,81,81	2.26	9 (23%)
2	PGD	A	1783	3	34,52,52	2.81	15 (44%)	39,81,81	2.04	9 (23%)
4	SO4	A	1785	-	4,4,4	0.64	0	6,6,6	0.19	0
2	PGD	C	1782	3	34,52,52	2.72	11 (32%)	39,81,81	1.88	7 (17%)
2	PGD	C	1783	3	34,52,52	2.92	15 (44%)	39,81,81	2.10	8 (20%)
4	SO4	C	1785	-	4,4,4	0.80	0	6,6,6	0.32	0

In the following table, the Chirals column lists the number of chiral outliers, the number of chiral centers analysed, the number of these observed in the model and the number defined in the chemical component dictionary. Similar counts are reported in the Torsion and Rings columns. '-' means no outliers of that kind were identified.

Mol	Type	Chain	Res	Link	Chirals	Torsions	Rings
2	PGD	A	1782	3	-	0/18/82/82	0/6/6/6
2	PGD	A	1783	3	-	0/18/82/82	0/6/6/6
4	SO4	A	1785	-	-	0/0/0/0	0/0/0/0
2	PGD	C	1782	3	-	0/18/82/82	0/6/6/6
2	PGD	C	1783	3	-	0/18/82/82	0/6/6/6
4	SO4	C	1785	-	-	0/0/0/0	0/0/0/0

The worst 5 of 54 bond length outliers are listed below:

Mol	Chain	Res	Type	Atoms	Z	Observed(Å)	Ideal(Å)
2	C	1783	PGD	O11-C23	-3.20	1.39	1.43
2	A	1783	PGD	O11-C11	-2.90	1.39	1.43
2	C	1783	PGD	O11-C11	-2.66	1.39	1.43
2	A	1782	PGD	C5-C4	-2.34	1.35	1.40
2	A	1783	PGD	O11-C23	-2.14	1.40	1.43

The worst 5 of 33 bond angle outliers are listed below:

Mol	Chain	Res	Type	Atoms	Z	Observed(°)	Ideal(°)
2	C	1783	PGD	C4'-O4'-C1'	-7.42	101.57	109.72
2	A	1783	PGD	C4'-O4'-C1'	-5.73	103.42	109.72
2	C	1782	PGD	C5-C6-N1	-5.55	116.00	123.59
2	A	1783	PGD	C5-C6-N1	-5.51	116.05	123.59
2	C	1783	PGD	N3-C2-N1	-4.31	120.88	127.44

There are no chirality outliers.

There are no torsion outliers.

There are no ring outliers.

3 monomers are involved in 3 short contacts:

Mol	Chain	Res	Type	Clashes	Symm-Clashes
2	A	1782	PGD	1	0
2	C	1782	PGD	1	0
2	C	1783	PGD	1	0

5.7 Other polymers [i](#)

There are no such residues in this entry.

5.8 Polymer linkage issues [i](#)

There are no chain breaks in this entry.

6 Fit of model and data ⓘ

6.1 Protein, DNA and RNA chains ⓘ

EDS was not executed - this section will therefore be empty.

6.2 Non-standard residues in protein, DNA, RNA chains ⓘ

EDS was not executed - this section will therefore be empty.

6.3 Carbohydrates ⓘ

EDS was not executed - this section will therefore be empty.

6.4 Ligands ⓘ

EDS was not executed - this section will therefore be empty.

6.5 Other polymers ⓘ

EDS was not executed - this section will therefore be empty.