



# Full wwPDB X-ray Structure Validation Report ⓘ

Feb 1, 2016 – 09:06 AM GMT

PDB ID : 3H7J  
Title : Crystal structure of BacB, an enzyme involved in Bacilysin synthesis, in monoclinic form  
Authors : Rajavel, M.; Gopal, B.  
Deposited on : 2009-04-27  
Resolution : 1.87 Å(reported)

This is a Full wwPDB X-ray Structure Validation Report for a publicly released PDB entry.  
We welcome your comments at [validation@mail.wwpdb.org](mailto:validation@mail.wwpdb.org)  
A user guide is available at  
<http://wwpdb.org/validation/2016/XrayValidationReportHelp>  
with specific help available everywhere you see the ⓘ symbol.

---

The following versions of software and data (see [references ⓘ](#)) were used in the production of this report:

MolProbity : 4.02b-467  
Mogul : 1.7 (RC4), CSD as536be (2015)  
Xtriage (Phenix) : 1.9-1692  
EDS : rb-20026688  
Percentile statistics : 20151230.v01 (using entries in the PDB archive December 30th 2015)  
Refmac : 5.8.0135  
CCP4 : 6.5.0  
Ideal geometry (proteins) : Engh & Huber (2001)  
Ideal geometry (DNA, RNA) : Parkinson et al. (1996)  
Validation Pipeline (wwPDB-VP) : trunk26865

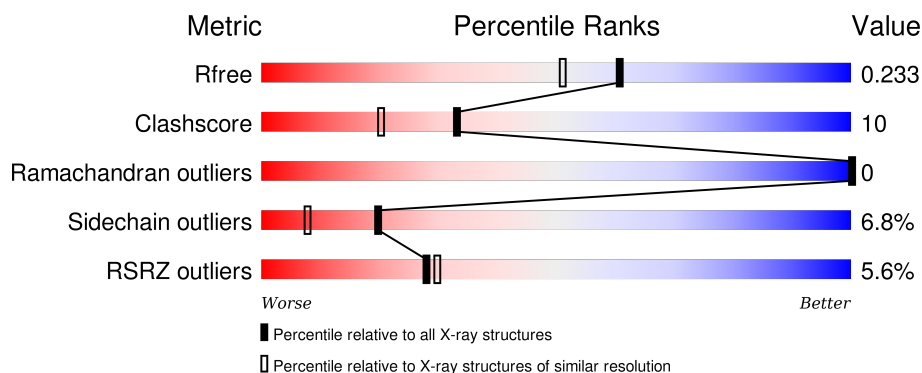
# 1 Overall quality at a glance

The following experimental techniques were used to determine the structure:

## *X-RAY DIFFRACTION*



The reported resolution of this entry is 1.87 Å.

Percentile scores (ranging between 0-100) for global validation metrics of the entry are shown in the following graphic. The table shows the number of entries on which the scores are based.



Metric	Whole archive (#Entries)	Similar resolution (#Entries, resolution range(Å))
$R_{free}$	91344	6965 (1.90-1.86)
Clashscore	102246	7778 (1.90-1.86)
Ramachandran outliers	100387	7691 (1.90-1.86)
Sidechain outliers	100360	7692 (1.90-1.86)
RSRZ outliers	91569	6979 (1.90-1.86)

The table below summarises the geometric issues observed across the polymeric chains and their fit to the electron density. The red, orange, yellow and green segments on the lower bar indicate the fraction of residues that contain outliers for  $\geq 3$ , 2, 1 and 0 types of geometric quality criteria. A grey segment represents the fraction of residues that are not modelled. The numeric value for each fraction is indicated below the corresponding segment, with a dot representing fractions  $\leq 5\%$ . The upper red bar (where present) indicates the fraction of residues that have poor fit to the electron density. The numeric value is given above the bar.

Mol	Chain	Length	Quality of chain
1	A	243	 <p>2% 74% 14% 8%</p>
1	B	243	 <p>9% 78% 12% 8%</p>

## 2 Entry composition

There are 5 unique types of molecules in this entry. The entry contains 3798 atoms, of which 0 are hydrogens and 0 are deuteriums.

In the tables below, the ZeroOcc column contains the number of atoms modelled with zero occupancy, the AltConf column contains the number of residues with at least one atom in alternate conformation and the Trace column contains the number of residues modelled with at most 2 atoms.

- Molecule 1 is a protein called Bacilysin biosynthesis protein bacB.

Mol	Chain	Residues	Atoms					ZeroOcc	AltConf	Trace
1	A	224	Total	C	N	O	S	0	0	0
			1796	1137	302	343	14			
1	B	224	Total	C	N	O	S	0	0	0
			1796	1137	302	343	14			

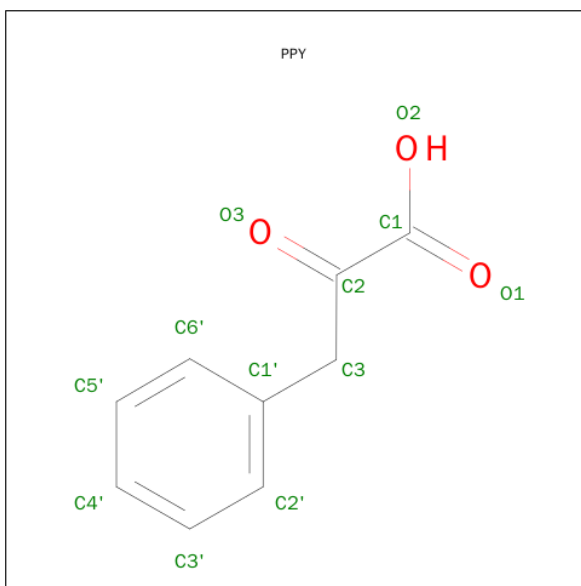
There are 16 discrepancies between the modelled and reference sequences:

Chain	Residue	Modelled	Actual	Comment	Reference
A	236	LEU	-	EXPRESSION TAG	UNP P39639
A	237	GLU	-	EXPRESSION TAG	UNP P39639
A	238	HIS	-	EXPRESSION TAG	UNP P39639
A	239	HIS	-	EXPRESSION TAG	UNP P39639
A	240	HIS	-	EXPRESSION TAG	UNP P39639
A	241	HIS	-	EXPRESSION TAG	UNP P39639
A	242	HIS	-	EXPRESSION TAG	UNP P39639
A	243	HIS	-	EXPRESSION TAG	UNP P39639
B	236	LEU	-	EXPRESSION TAG	UNP P39639
B	237	GLU	-	EXPRESSION TAG	UNP P39639
B	238	HIS	-	EXPRESSION TAG	UNP P39639
B	239	HIS	-	EXPRESSION TAG	UNP P39639
B	240	HIS	-	EXPRESSION TAG	UNP P39639
B	241	HIS	-	EXPRESSION TAG	UNP P39639
B	242	HIS	-	EXPRESSION TAG	UNP P39639
B	243	HIS	-	EXPRESSION TAG	UNP P39639

- Molecule 2 is COBALT (II) ION (three-letter code: CO) (formula: Co).

Mol	Chain	Residues	Atoms		ZeroOcc	AltConf
2	B	2	Total	Co	0	0
			2	2		
2	A	2	Total	Co	0	0
			2	2		

- Molecule 3 is 3-PHENYLPYRUVIC ACID (three-letter code: PPY) (formula:  $C_9H_8O_3$ ).



Mol	Chain	Residues	Atoms			ZeroOcc	AltConf
3	A	1	Total	C	O	0	0
			12	9	3		
3	B	1	Total	C	O	0	0
			12	9	3		

- Molecule 4 is FE (III) ION (three-letter code: FE) (formula: Fe).

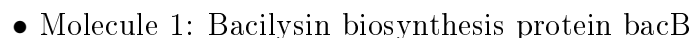
Mol	Chain	Residues	Atoms		ZeroOcc	AltConf
4	A	2	Total	Fe	0	0
			2	2		

- Molecule 5 is water.

Mol	Chain	Residues	Atoms		ZeroOcc	AltConf
5	A	118	Total	O	0	0
			118	118		
5	B	58	Total	O	0	0
			58	58		



- Molecule 1: Bacilysin biosynthesis protein bacB



## 4 Data and refinement statistics

Property	Value	Source
Space group	P 1 21 1	Depositor
Cell constants a, b, c, $\alpha$ , $\beta$ , $\gamma$	45.99Å 118.49Å 46.93Å 90.00° 97.92° 90.00°	Depositor
Resolution (Å)	26.21 – 1.87 26.21 – 1.87	Depositor EDS
% Data completeness (in resolution range)	96.5 (26.21-1.87) 96.6 (26.21-1.87)	Depositor EDS
$R_{merge}$	0.07	Depositor
$R_{sym}$	(Not available)	Depositor
$\langle I/\sigma(I) \rangle$ <sup>1</sup>	1.80 (at 1.87Å)	Xtriage
Refinement program	REFMAC 5.5.0066	Depositor
R, $R_{free}$	0.185 , 0.227 0.193 , 0.233	Depositor DCC
$R_{free}$ test set	2011 reflections (5.32%)	DCC
Wilson B-factor (Å <sup>2</sup> )	24.5	Xtriage
Anisotropy	0.103	Xtriage
Bulk solvent $k_{sol}$ (e/Å <sup>3</sup> ), $B_{sol}$ (Å <sup>2</sup> )	0.37 , 47.0	EDS
Estimated twinning fraction	0.036 for l,-k,h	Xtriage
L-test for twinning <sup>2</sup>	$\langle  L  \rangle = 0.48$ , $\langle L^2 \rangle = 0.31$	Xtriage
Outliers	0 of 39944 reflections	Xtriage
$F_o, F_c$ correlation	0.95	EDS
Total number of atoms	3798	wwPDB-VP
Average B, all atoms (Å <sup>2</sup> )	16.0	wwPDB-VP

Xtriage's analysis on translational NCS is as follows: *The largest off-origin peak in the Patterson function is 5.57% of the height of the origin peak. No significant pseudotranslation is detected.*

<sup>1</sup>Intensities estimated from amplitudes.

<sup>2</sup>Theoretical values of  $\langle |L| \rangle$ ,  $\langle L^2 \rangle$  for acentric reflections are 0.5, 0.375 respectively for untwinned datasets, and 0.333, 0.2 for perfectly twinned datasets.

## 5 Model quality [i](#)

### 5.1 Standard geometry [i](#)

Bond lengths and bond angles in the following residue types are not validated in this section: PPY, CO, FE

The Z score for a bond length (or angle) is the number of standard deviations the observed value is removed from the expected value. A bond length (or angle) with  $|Z| > 5$  is considered an outlier worth inspection. RMSZ is the root-mean-square of all Z scores of the bond lengths (or angles).

Mol	Chain	Bond lengths		Bond angles	
		RMSZ	$\# Z  > 5$	RMSZ	$\# Z  > 5$
1	A	1.27	6/1841 (0.3%)	1.10	5/2492 (0.2%)
1	B	1.10	1/1841 (0.1%)	0.99	1/2492 (0.0%)
All	All	1.19	7/3682 (0.2%)	1.04	6/4984 (0.1%)

All (7) bond length outliers are listed below:

Mol	Chain	Res	Type	Atoms	Z	Observed(Å)	Ideal(Å)
1	A	184	CYS	CB-SG	-5.98	1.72	1.81
1	A	195	PHE	CE2-CZ	5.82	1.48	1.37
1	A	182	GLU	CD-OE2	-5.80	1.19	1.25
1	A	69	VAL	CB-CG1	5.54	1.64	1.52
1	B	101	VAL	CB-CG1	5.41	1.64	1.52
1	A	200	GLU	CD-OE2	-5.28	1.19	1.25
1	A	144	TRP	CE3-CZ3	-5.15	1.29	1.38

All (6) bond angle outliers are listed below:

Mol	Chain	Res	Type	Atoms	Z	Observed(°)	Ideal(°)
1	B	104	ILE	CG1-CB-CG2	5.59	123.69	111.40
1	A	98	ASP	CB-CG-OD2	5.46	123.22	118.30
1	A	179	MET	CA-CB-CG	-5.38	104.16	113.30
1	A	130	ASP	CB-CG-OD2	5.30	123.07	118.30
1	A	10	LEU	CA-CB-CG	5.19	127.24	115.30
1	A	199	ARG	NE-CZ-NH1	-5.08	117.76	120.30

There are no chirality outliers.

There are no planarity outliers.

## 5.2 Too-close contacts ⓘ

In the following table, the Non-H and H(model) columns list the number of non-hydrogen atoms and hydrogen atoms in the chain respectively. The H(added) column lists the number of hydrogen atoms added and optimized by MolProbity. The Clashes column lists the number of clashes within the asymmetric unit, whereas Symm-Clashes lists symmetry related clashes.

Mol	Chain	Non-H	H(model)	H(added)	Clashes	Symm-Clashes
1	A	1796	0	1739	35	0
1	B	1796	0	1739	46	0
2	A	2	0	0	0	0
2	B	2	0	0	0	0
3	A	12	0	7	3	0
3	B	12	0	7	2	0
4	A	2	0	0	0	0
5	A	118	0	0	5	0
5	B	58	0	0	3	0
All	All	3798	0	3492	73	0

The all-atom clashscore is defined as the number of clashes found per 1000 atoms (including hydrogen atoms). The all-atom clashscore for this structure is 10.

All (73) close contacts within the same asymmetric unit are listed below, sorted by their clash magnitude.

Atom-1	Atom-2	Interatomic distance (Å)	Clash overlap (Å)
1:B:16:LYS:NZ	1:B:16:LYS:CB	1.97	1.26
1:B:16:LYS:NZ	1:B:16:LYS:HB3	1.33	1.25
1:B:208:SER:HB2	1:B:209:GLU:OE1	1.35	1.21
1:B:16:LYS:HZ2	1:B:16:LYS:CB	1.58	1.12
1:B:199:ARG:HH11	1:B:199:ARG:HG2	1.09	1.11
1:B:208:SER:CB	1:B:209:GLU:OE1	2.00	1.09
1:B:209:GLU:N	1:B:209:GLU:OE1	1.88	1.05
1:B:165:ARG:HG3	1:B:165:ARG:HH11	0.87	1.03
1:B:165:ARG:NH1	1:B:165:ARG:HG3	1.61	0.98
1:A:152:ILE:HG13	5:A:354:HOH:O	1.63	0.97
1:B:165:ARG:CG	1:B:165:ARG:HH11	1.80	0.94
1:A:18:ILE:HG23	1:B:16:LYS:HZ1	1.32	0.93
1:B:199:ARG:NH1	1:B:199:ARG:HG2	1.89	0.86
1:A:138:THR:HG22	1:A:149:LEU:HB2	1.55	0.86
1:B:16:LYS:HZ3	1:B:16:LYS:HB3	1.03	0.85
1:B:98:ASP:HB2	5:B:281:HOH:O	1.76	0.85
1:B:199:ARG:HH11	1:B:199:ARG:CG	1.90	0.84
1:A:16:LYS:NZ	1:B:20:TRP:CZ3	2.47	0.83

*Continued on next page...*



*Continued from previous page...*

Atom-1	Atom-2	Interatomic distance (Å)	Clash overlap (Å)
1:A:104:ILE:HD13	1:A:171:ILE:HG21	1.62	0.82
1:B:16:LYS:HZ2	1:B:16:LYS:HB2	1.41	0.82
1:A:16:LYS:NZ	1:B:20:TRP:CH2	2.49	0.80
1:B:16:LYS:HZ2	1:B:16:LYS:HB3	1.16	0.80
1:A:106:ILE:N	1:A:106:ILE:HD12	2.01	0.75
1:B:98:ASP:CB	5:B:281:HOH:O	2.32	0.75
1:A:18:ILE:CG2	1:B:16:LYS:HZ1	2.02	0.72
1:A:18:ILE:HG23	1:B:16:LYS:NZ	2.07	0.69
1:B:38:MET:HE3	1:B:104:ILE:HD11	1.74	0.67
1:B:165:ARG:CG	1:B:165:ARG:NH1	2.47	0.66
1:A:180:THR:HG23	5:A:366:HOH:O	1.94	0.66
1:A:105:ASP:C	1:A:106:ILE:HD12	2.16	0.65
1:A:152:ILE:HD11	3:A:246:PPY:H5'	1.82	0.62
1:A:16:LYS:NZ	1:B:20:TRP:CE3	2.68	0.61
1:A:106:ILE:N	1:A:106:ILE:CD1	2.67	0.57
1:B:209:GLU:H	1:B:209:GLU:CD	1.89	0.56
1:B:208:SER:CA	1:B:209:GLU:OE1	2.53	0.55
1:A:16:LYS:NZ	1:B:20:TRP:CZ2	2.73	0.55
1:B:38:MET:CE	1:B:104:ILE:HD11	2.36	0.55
1:A:18:ILE:CG2	1:B:16:LYS:NZ	2.68	0.55
1:A:8:GLN:OE1	1:A:9:GLU:HA	2.07	0.55
1:A:59:MET:HG3	1:A:81:SER:O	2.07	0.54
1:A:152:ILE:HD11	3:A:246:PPY:C5'	2.40	0.51
1:A:171:ILE:HD11	5:A:330:HOH:O	2.10	0.50
1:A:7:MET:HB3	1:A:11:TYR:CE2	2.47	0.50
1:B:59:MET:HE1	1:B:147:ILE:HG21	1.94	0.50
1:B:159:MET:CE	3:B:246:PPY:H31	2.42	0.49
1:B:170:GLY:HA3	1:B:194:TYR:CE2	2.48	0.49
1:B:119:GLU:HB3	5:B:304:HOH:O	2.12	0.49
1:A:151:LYS:HE2	1:A:213:LYS:NZ	2.27	0.49
1:B:159:MET:HE2	3:B:246:PPY:H31	1.95	0.47
1:B:199:ARG:NH1	1:B:199:ARG:CG	2.60	0.47
1:A:138:THR:CG2	1:A:149:LEU:HB2	2.36	0.47
1:A:48:GLU:HG3	1:A:49:PRO:HD2	1.97	0.46
1:A:99:GLN:NE2	1:A:99:GLN:HA	2.31	0.46
1:A:151:LYS:HE3	5:A:349:HOH:O	2.15	0.45
1:B:59:MET:HE2	1:B:59:MET:HB2	1.79	0.45
1:A:179:MET:HG3	1:A:180:THR:N	2.32	0.45
1:A:59:MET:HE2	1:A:59:MET:HB2	1.76	0.45
1:B:149:LEU:HD12	1:B:215:ILE:HG12	1.98	0.44
1:B:51:GLN:HB2	1:B:88:HIS:HA	2.00	0.44

*Continued on next page...*

Continued from previous page...

Atom-1	Atom-2	Interatomic distance (Å)	Clash overlap (Å)
1:B:142:GLU:OE2	1:B:142:GLU:HA	2.17	0.44
1:A:180:THR:CG2	1:A:185:THR:OG1	2.66	0.44
1:A:16:LYS:NZ	1:B:20:TRP:CD2	2.86	0.43
1:B:118:PRO:O	1:B:119:GLU:C	2.56	0.43
1:A:81:SER:HB3	5:A:362:HOH:O	2.19	0.42
1:A:50:HIS:C	1:A:50:HIS:CD2	2.93	0.42
1:B:49:PRO:HA	1:B:91:HIS:O	2.19	0.42
1:A:8:GLN:C	1:A:8:GLN:CD	2.78	0.42
1:B:162:HIS:O	1:B:201:ASP:HA	2.19	0.41
1:B:163:LYS:HE3	1:B:163:LYS:HB3	1.63	0.41
3:A:246:PPY:H2'	3:A:246:PPY:O3	2.21	0.41
1:A:8:GLN:HE22	1:A:9:GLU:HG3	1.86	0.41
1:B:112:ASP:N	1:B:112:ASP:OD2	2.41	0.40
1:A:165:ARG:HD2	1:A:165:ARG:HH11	1.72	0.40

There are no symmetry-related clashes.

## 5.3 Torsion angles [i](#)

### 5.3.1 Protein backbone [i](#)

In the following table, the Percentiles column shows the percent Ramachandran outliers of the chain as a percentile score with respect to all X-ray entries followed by that with respect to entries of similar resolution.

The Analysed column shows the number of residues for which the backbone conformation was analysed, and the total number of residues.

Mol	Chain	Analysed	Favoured	Allowed	Outliers	Percentiles	
1	A	222/243 (91%)	218 (98%)	4 (2%)	0	100	100
1	B	222/243 (91%)	218 (98%)	4 (2%)	0	100	100
All	All	444/486 (91%)	436 (98%)	8 (2%)	0	100	100

There are no Ramachandran outliers to report.

### 5.3.2 Protein sidechains [i](#)

In the following table, the Percentiles column shows the percent sidechain outliers of the chain as a percentile score with respect to all X-ray entries followed by that with respect to entries of similar resolution.

The Analysed column shows the number of residues for which the sidechain conformation was analysed, and the total number of residues.

Mol	Chain	Analysed	Rotameric	Outliers	Percentiles	
1	A	198/214 (92%)	183 (92%)	15 (8%)	16	6
1	B	198/214 (92%)	186 (94%)	12 (6%)	23	10
All	All	396/428 (92%)	369 (93%)	27 (7%)	20	8

All (27) residues with a non-rotameric sidechain are listed below:

Mol	Chain	Res	Type
1	A	2	LYS
1	A	8	GLN
1	A	48	GLU
1	A	50	HIS
1	A	51	GLN
1	A	59	MET
1	A	74	ARG
1	A	81	SER
1	A	123	LEU
1	A	127	LYS
1	A	138	THR
1	A	163	LYS
1	A	180	THR
1	A	207	ARG
1	A	211	GLU
1	B	2	LYS
1	B	8	GLN
1	B	16	LYS
1	B	50	HIS
1	B	104	ILE
1	B	129	ARG
1	B	149	LEU
1	B	155	ASN
1	B	165	ARG
1	B	199	ARG
1	B	207	ARG
1	B	209	GLU

Some sidechains can be flipped to improve hydrogen bonding and reduce clashes. All (2) such sidechains are listed below:

Mol	Chain	Res	Type
1	A	99	GLN

*Continued on next page...*

*Continued from previous page...*

Mol	Chain	Res	Type
1	B	8	GLN

### 5.3.3 RNA [i](#)

There are no RNA molecules in this entry.

## 5.4 Non-standard residues in protein, DNA, RNA chains [i](#)

There are no non-standard protein/DNA/RNA residues in this entry.

## 5.5 Carbohydrates [i](#)

There are no carbohydrates in this entry.

## 5.6 Ligand geometry [i](#)

Of 8 ligands modelled in this entry, 6 are monoatomic - leaving 2 for Mogul analysis.

In the following table, the Counts columns list the number of bonds (or angles) for which Mogul statistics could be retrieved, the number of bonds (or angles) that are observed in the model and the number of bonds (or angles) that are defined in the chemical component dictionary. The Link column lists molecule types, if any, to which the group is linked. The Z score for a bond length (or angle) is the number of standard deviations the observed value is removed from the expected value. A bond length (or angle) with  $|Z| > 2$  is considered an outlier worth inspection. RMSZ is the root-mean-square of all Z scores of the bond lengths (or angles).

Mol	Type	Chain	Res	Link	Bond lengths			Bond angles		
					Counts	RMSZ	# Z  > 2	Counts	RMSZ	# Z  > 2
3	PPY	A	246	2	9,12,12	0.75	0	10,15,15	2.06	3 (30%)
3	PPY	B	246	2	9,12,12	1.31	1 (11%)	10,15,15	2.22	4 (40%)

In the following table, the Chirals column lists the number of chiral outliers, the number of chiral centers analysed, the number of these observed in the model and the number defined in the chemical component dictionary. Similar counts are reported in the Torsion and Rings columns. '-' means no outliers of that kind were identified.

Mol	Type	Chain	Res	Link	Chirals	Torsions	Rings
3	PPY	A	246	2	-	0/4/8/8	0/1/1/1
3	PPY	B	246	2	-	0/4/8/8	0/1/1/1

All (1) bond length outliers are listed below:

Mol	Chain	Res	Type	Atoms	Z	Observed(Å)	Ideal(Å)
3	B	246	PPY	C3-C2	-3.26	1.48	1.51

All (7) bond angle outliers are listed below:

Mol	Chain	Res	Type	Atoms	Z	Observed(°)	Ideal(°)
3	A	246	PPY	C3-C1'-C6'	-3.85	115.08	120.86
3	B	246	PPY	C3-C1'-C6'	-3.32	115.87	120.86
3	B	246	PPY	C6'-C1'-C2'	2.20	121.66	118.13
3	B	246	PPY	C1'-C3-C2	2.66	121.22	114.75
3	A	246	PPY	C1'-C3-C2	3.24	122.65	114.75
3	A	246	PPY	C3-C1'-C2'	3.70	126.42	120.86
3	B	246	PPY	O3-C2-C3	4.71	129.35	120.74

There are no chirality outliers.

There are no torsion outliers.

There are no ring outliers.

2 monomers are involved in 5 short contacts:

Mol	Chain	Res	Type	Clashes	Symm-Clashes
3	A	246	PPY	3	0
3	B	246	PPY	2	0

## 5.7 Other polymers [i](#)

There are no such residues in this entry.

## 5.8 Polymer linkage issues [i](#)

There are no chain breaks in this entry.

## 6 Fit of model and data ⓘ

### 6.1 Protein, DNA and RNA chains ⓘ

In the following table, the column labelled ‘#RSRZ> 2’ contains the number (and percentage) of RSRZ outliers, followed by percent RSRZ outliers for the chain as percentile scores relative to all X-ray entries and entries of similar resolution. The OWAB column contains the minimum, median, 95<sup>th</sup> percentile and maximum values of the occupancy-weighted average B-factor per residue. The column labelled ‘Q< 0.9’ lists the number of (and percentage) of residues with an average occupancy less than 0.9.

Mol	Chain	Analysed	<RSRZ>	#RSRZ>2	OWAB(Å <sup>2</sup> )	Q<0.9
1	A	224/243 (92%)	0.06	4 (1%) 71 73	5, 13, 22, 29	0
1	B	224/243 (92%)	0.43	21 (9%) 11 11	12, 18, 27, 33	0
All	All	448/486 (92%)	0.24	25 (5%) 28 30	5, 16, 25, 33	0

All (25) RSRZ outliers are listed below:

Mol	Chain	Res	Type	RSRZ
1	B	112	ASP	3.9
1	B	215	ILE	3.8
1	B	126	PHE	3.7
1	B	128	THR	3.5
1	B	209	GLU	3.3
1	B	127	LYS	2.8
1	B	217	ILE	2.7
1	B	147	ILE	2.6
1	B	111	ALA	2.6
1	A	99	GLN	2.5
1	B	106	ILE	2.5
1	A	6	ASP	2.5
1	B	104	ILE	2.5
1	B	57	ILE	2.4
1	B	133	PRO	2.4
1	B	171	ILE	2.4
1	B	10	LEU	2.4
1	B	58	GLY	2.3
1	A	71	ASP	2.3
1	B	110	LYS	2.3
1	B	59	MET	2.2
1	B	33	ASP	2.1
1	B	98	ASP	2.0
1	B	216	ASN	2.0

*Continued on next page...*

*Continued from previous page...*

Mol	Chain	Res	Type	RSRZ
1	A	106	ILE	2.0

## 6.2 Non-standard residues in protein, DNA, RNA chains [i](#)

There are no non-standard protein/DNA/RNA residues in this entry.

## 6.3 Carbohydrates [i](#)

There are no carbohydrates in this entry.

## 6.4 Ligands [i](#)

In the following table, the Atoms column lists the number of modelled atoms in the group and the number defined in the chemical component dictionary. LLDF column lists the quality of electron density of the group with respect to its neighbouring residues in protein, DNA or RNA chains. The B-factors column lists the minimum, median, 95<sup>th</sup> percentile and maximum values of B factors of atoms in the group. The column labelled 'Q< 0.9' lists the number of atoms with occupancy less than 0.9.

Mol	Type	Chain	Res	Atoms	RSCC	RSR	LLDF	B-factors(Å <sup>2</sup> )	Q<0.9
3	PPY	B	246	12/12	0.95	0.20	1.71	25,33,35,37	0
3	PPY	A	246	12/12	0.95	0.14	0.62	12,16,22,24	0
4	FE	A	247	1/1	1.00	0.04	-1.64	21,21,21,21	1
4	FE	A	248	1/1	0.98	0.06	-2.39	27,27,27,27	1
2	CO	B	245	1/1	0.98	0.03	-	32,32,32,32	0
2	CO	A	245	1/1	1.00	0.05	-	17,17,17,17	0
2	CO	B	244	1/1	0.99	0.05	-	29,29,29,29	0
2	CO	A	244	1/1	1.00	0.06	-	22,22,22,22	0

## 6.5 Other polymers [i](#)

There are no such residues in this entry.