



Full wwPDB X-ray Structure Validation Report ⓘ

Feb 1, 2016 – 09:08 AM GMT

PDB ID : 3HAV
Title : Structure of the streptomycin-ATP-APH(2'')-IIa ternary complex
Authors : Young, P.G.; Baker, E.N.; Vakulenko, S.B.; Smith, C.A.
Deposited on : 2009-05-02
Resolution : 2.45 Å(reported)

This is a Full wwPDB X-ray Structure Validation Report for a publicly released PDB entry.
We welcome your comments at validation@mail.wwpdb.org
A user guide is available at
<http://wwpdb.org/validation/2016/XrayValidationReportHelp>
with specific help available everywhere you see the ⓘ symbol.

The following versions of software and data (see [references ⓘ](#)) were used in the production of this report:

MolProbity : 4.02b-467
Mogul : 1.7 (RC4), CSD as536be (2015)
Xtriage (Phenix) : 1.9-1692
EDS : rb-20026688
Percentile statistics : 20151230.v01 (using entries in the PDB archive December 30th 2015)
Refmac : 5.8.0135
CCP4 : 6.5.0
Ideal geometry (proteins) : Engh & Huber (2001)
Ideal geometry (DNA, RNA) : Parkinson et al. (1996)
Validation Pipeline (wwPDB-VP) : trunk26865

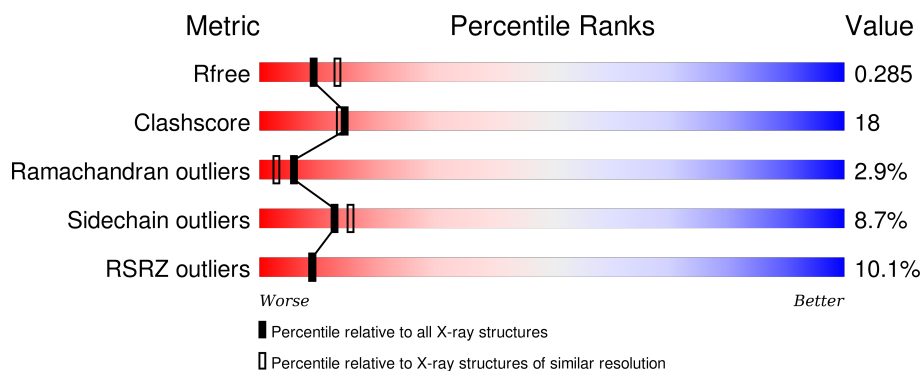
1 Overall quality at a glance ⓘ

The following experimental techniques were used to determine the structure:

X-RAY DIFFRACTION

The reported resolution of this entry is 2.45 Å.

Percentile scores (ranging between 0-100) for global validation metrics of the entry are shown in the following graphic. The table shows the number of entries on which the scores are based.



Metric	Whole archive (#Entries)	Similar resolution (#Entries, resolution range(Å))
R_{free}	91344	4776 (2.50-2.42)
Clashscore	102246	1030 (2.48-2.44)
Ramachandran outliers	100387	1024 (2.48-2.44)
Sidechain outliers	100360	1024 (2.48-2.44)
RSRZ outliers	91569	4787 (2.50-2.42)

The table below summarises the geometric issues observed across the polymeric chains and their fit to the electron density. The red, orange, yellow and green segments on the lower bar indicate the fraction of residues that contain outliers for ≥ 3 , 2, 1 and 0 types of geometric quality criteria. A grey segment represents the fraction of residues that are not modelled. The numeric value for each fraction is indicated below the corresponding segment, with a dot representing fractions $\leq 5\%$. The upper red bar (where present) indicates the fraction of residues that have poor fit to the electron density. The numeric value is given above the bar.

Mol	Chain	Length	Quality of chain
1	A	299	<div> <div>8%</div> <div>66%</div> <div>27%</div> <div>6%</div> <div>.</div> </div>
1	B	299	<div> <div>12%</div> <div>64%</div> <div>28%</div> <div>7%</div> <div>..</div> </div>
1	C	299	<div> <div>10%</div> <div>56%</div> <div>33%</div> <div>6%</div> <div>5%</div> </div>

The following table lists non-polymeric compounds, carbohydrate monomers and non-standard residues in protein, DNA, RNA chains that are outliers for geometric or electron-density-fit criteria:

Mol	Type	Chain	Res	Chirality	Geometry	Clashes	Electron density
4	SRY	A	403	X	-	-	X
4	SRY	B	403	X	-	-	X
4	SRY	C	403	X	-	-	X

2 Entry composition [i](#)

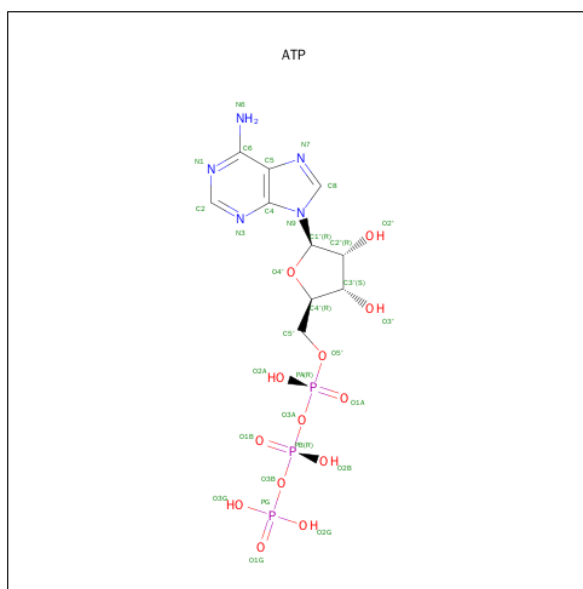
There are 5 unique types of molecules in this entry. The entry contains 7716 atoms, of which 0 are hydrogens and 0 are deuteriums.

In the tables below, the ZeroOcc column contains the number of atoms modelled with zero occupancy, the AltConf column contains the number of residues with at least one atom in alternate conformation and the Trace column contains the number of residues modelled with at most 2 atoms.

- Molecule 1 is a protein called Aminoglycoside phosphotransferase.

Mol	Chain	Residues	Atoms					ZeroOcc	AltConf	Trace
1	A	296	Total	C	N	O	S	5	2	0
			2474	1584	404	474	12			
1	B	297	Total	C	N	O	S	0	0	0
			2465	1579	401	473	12			
1	C	284	Total	C	N	O	S	10	0	0
			2359	1514	384	451	10			

- Molecule 2 is ADENOSINE-5'-TRIPHOSPHATE (three-letter code: ATP) (formula: $C_{10}H_{16}N_5O_{13}P_3$).

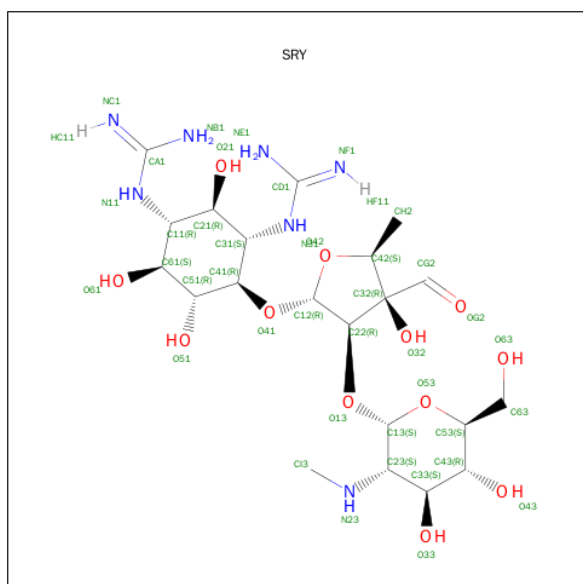


Mol	Chain	Residues	Atoms					ZeroOcc	AltConf
2	A	1	Total	C	N	O	P	0	0
			31	10	5	13	3		
2	B	1	Total	C	N	O	P	0	0
			31	10	5	13	3		
2	C	1	Total	C	N	O	P	0	0
			31	10	5	13	3		

- Molecule 3 is MAGNESIUM ION (three-letter code: MG) (formula: Mg).

Mol	Chain	Residues	Atoms		ZeroOcc	AltConf
3	B	1	Total	Mg	0	0
			1	1		
3	A	1	Total	Mg	0	0
			1	1		
3	C	1	Total	Mg	0	0
			1	1		

- Molecule 4 is STREPTOMYCIN (three-letter code: SRY) (formula: C₂₁H₃₉N₇O₁₂).



Mol	Chain	Residues	Atoms				ZeroOcc	AltConf
4	A	1	Total	C	N	O	0	0
			40	21	7	12		
4	B	1	Total	C	N	O	0	0
			40	21	7	12		
4	C	1	Total	C	N	O	0	0
			40	21	7	12		

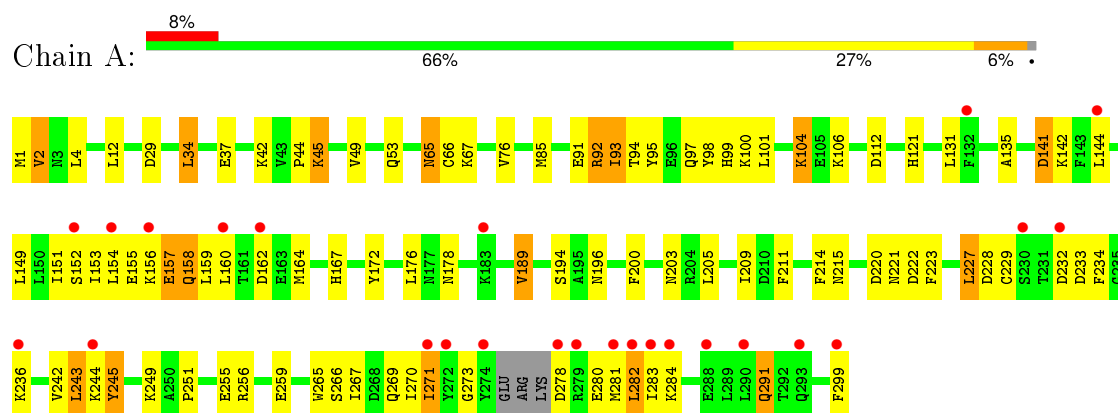
- Molecule 5 is water.

Mol	Chain	Residues	Atoms		ZeroOcc	AltConf
5	A	75	Total	O	0	0
			75	75		
5	B	61	Total	O	0	0
			61	61		
5	C	66	Total	O	0	0
			66	66		

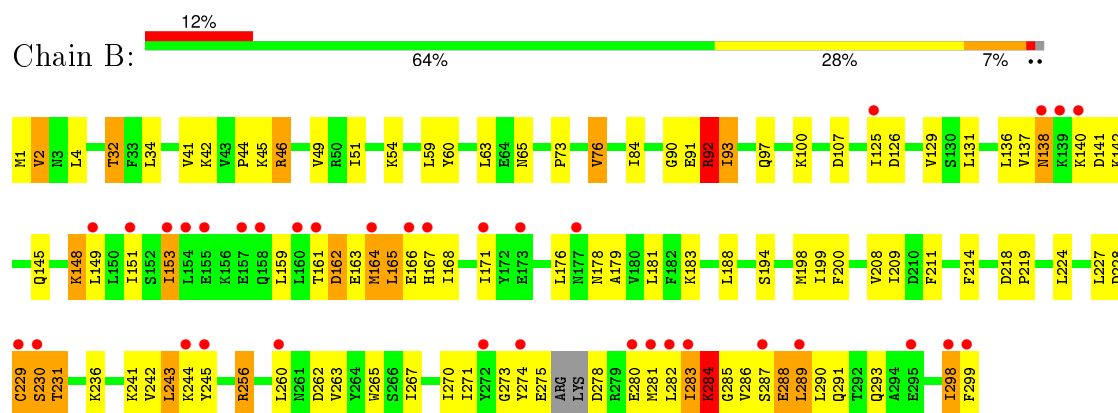
3 Residue-property plots

These plots are drawn for all protein, RNA and DNA chains in the entry. The first graphic for a chain summarises the proportions of errors displayed in the second graphic. The second graphic shows the sequence view annotated by issues in geometry and electron density. Residues are color-coded according to the number of geometric quality criteria for which they contain at least one outlier: green = 0, yellow = 1, orange = 2 and red = 3 or more. A red dot above a residue indicates a poor fit to the electron density ($RSRZ > 2$). Stretches of 2 or more consecutive residues without any outlier are shown as a green connector. Residues present in the sample, but not in the model, are shown in grey.

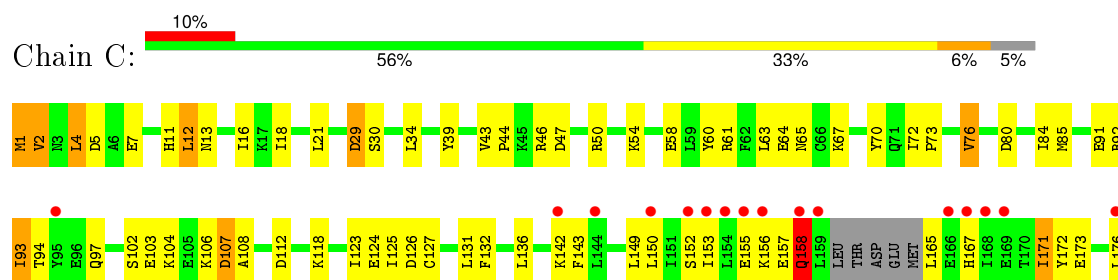
• Molecule 1: Aminoglycoside phosphotransferase

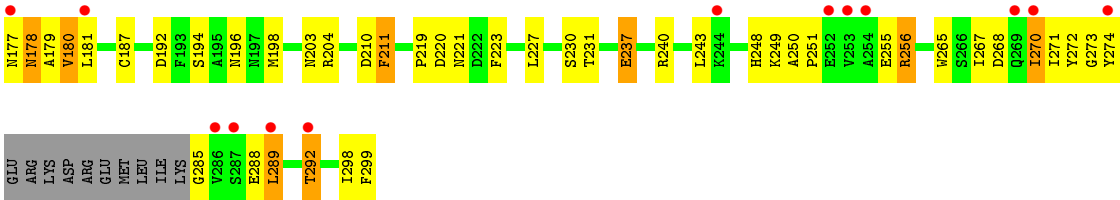


• Molecule 1: Aminoglycoside phosphotransferase



• Molecule 1: Aminoglycoside phosphotransferase





4 Data and refinement statistics

Property	Value	Source
Space group	P 31	Depositor
Cell constants a, b, c, α , β , γ	128.62Å 128.62Å 57.87Å 90.00° 90.00° 120.00°	Depositor
Resolution (Å)	19.78 – 2.45 19.78 – 2.40	Depositor EDS
% Data completeness (in resolution range)	99.3 (19.78-2.45) 99.2 (19.78-2.40)	Depositor EDS
R_{merge}	0.04	Depositor
R_{sym}	(Not available)	Depositor
$\langle I/\sigma(I) \rangle$ ¹	2.52 (at 2.41Å)	Xtriage
Refinement program	REFMAC 5.2.0019	Depositor
R, R_{free}	0.218 , 0.284 0.228 , 0.285	Depositor DCC
R_{free} test set	1944 reflections (5.24%)	DCC
Wilson B-factor (Å ²)	51.8	Xtriage
Anisotropy	0.330	Xtriage
Bulk solvent k_{sol} (e/Å ³), B_{sol} (Å ²)	0.29 , 41.2	EDS
Estimated twinning fraction	0.080 for -h,-k,l 0.086 for h,-h-k,-l 0.183 for -k,-h,-l	Xtriage
L-test for twinning ²	$\langle L \rangle = 0.40$, $\langle L^2 \rangle = 0.23$	Xtriage
Outliers	0 of 41452 reflections	Xtriage
F_o, F_c correlation	0.95	EDS
Total number of atoms	7716	wwPDB-VP
Average B, all atoms (Å ²)	75.0	wwPDB-VP

Xtriage's analysis on translational NCS is as follows: *The largest off-origin peak in the Patterson function is 3.15% of the height of the origin peak. No significant pseudotranslation is detected.*

¹Intensities estimated from amplitudes.

²Theoretical values of $\langle |L| \rangle$, $\langle L^2 \rangle$ for acentric reflections are 0.5, 0.375 respectively for untwinned datasets, and 0.333, 0.2 for perfectly twinned datasets.

5 Model quality [i](#)

5.1 Standard geometry [i](#)

Bond lengths and bond angles in the following residue types are not validated in this section: MG, SRY, ATP

The Z score for a bond length (or angle) is the number of standard deviations the observed value is removed from the expected value. A bond length (or angle) with $|Z| > 5$ is considered an outlier worth inspection. RMSZ is the root-mean-square of all Z scores of the bond lengths (or angles).

Mol	Chain	Bond lengths		Bond angles	
		RMSZ	$\# Z > 5$	RMSZ	$\# Z > 5$
1	A	0.24	0/2523	0.39	0/3395
1	B	0.23	0/2511	0.43	0/3380
1	C	0.24	0/2404	0.40	0/3236
All	All	0.24	0/7438	0.41	0/10011

Chiral center outliers are detected by calculating the chiral volume of a chiral center and verifying if the center is modelled as a planar moiety or with the opposite hand. A planarity outlier is detected by checking planarity of atoms in a peptide group, atoms in a mainchain group or atoms of a sidechain that are expected to be planar.

Mol	Chain	#Chirality outliers	#Planarity outliers
1	C	0	1

There are no bond length outliers.

There are no bond angle outliers.

There are no chirality outliers.

All (1) planarity outliers are listed below:

Mol	Chain	Res	Type	Group
1	C	91	GLU	Peptide

5.2 Too-close contacts [i](#)

In the following table, the Non-H and H(model) columns list the number of non-hydrogen atoms and hydrogen atoms in the chain respectively. The H(added) column lists the number of hydrogen atoms added and optimized by MolProbity. The Clashes column lists the number of clashes within the asymmetric unit, whereas Symm-Clashes lists symmetry related clashes.

Mol	Chain	Non-H	H(model)	H(added)	Clashes	Symm-Clashes
1	A	2474	0	2437	77	0
1	B	2465	0	2422	90	0
1	C	2359	0	2315	89	0
2	A	31	0	12	5	0
2	B	31	0	12	0	0
2	C	31	0	12	2	0
3	A	1	0	0	0	0
3	B	1	0	0	0	0
3	C	1	0	0	0	0
4	A	40	0	37	2	0
4	B	40	0	37	9	0
4	C	40	0	37	4	0
5	A	75	0	0	4	0
5	B	61	0	0	4	0
5	C	66	0	0	3	0
All	All	7716	0	7321	265	0

The all-atom clashscore is defined as the number of clashes found per 1000 atoms (including hydrogen atoms). The all-atom clashscore for this structure is 18.

All (265) close contacts within the same asymmetric unit are listed below, sorted by their clash magnitude.

Atom-1	Atom-2	Interatomic distance (Å)	Clash overlap (Å)
1:B:92:ARG:HD3	1:B:93:ILE:H	1.25	1.01
1:A:85:MET:HE3	2:A:401:ATP:HN61	1.23	1.00
1:C:92:ARG:HE	1:C:97:GLN:HE22	1.20	0.86
1:A:281:MET:HG3	1:A:282:LEU:HD23	1.58	0.84
1:A:85:MET:CE	2:A:401:ATP:HN61	1.92	0.83
1:B:125:ILE:HD11	1:B:188:LEU:HB2	1.61	0.83
1:B:92:ARG:HD3	1:B:93:ILE:N	1.96	0.81
1:A:242:VAL:O	1:A:243:LEU:HB2	1.83	0.78
1:C:85:MET:HE2	2:C:401:ATP:HN61	1.48	0.77
1:B:270:ILE:HD11	1:B:289:LEU:HD13	1.67	0.77
1:C:248:HIS:HD2	1:C:250:ALA:H	1.32	0.76
1:C:248:HIS:CD2	1:C:250:ALA:H	2.04	0.76
1:C:289:LEU:HD23	1:C:289:LEU:H	1.48	0.76
1:C:50:ARG:HD2	1:C:80:ASP:O	1.85	0.75
1:C:1:MET:O	1:C:2:VAL:HB	1.86	0.74
1:B:1:MET:O	1:B:2:VAL:HG22	1.87	0.74
1:C:92:ARG:HE	1:C:97:GLN:NE2	1.86	0.73
1:A:92[A]:ARG:CD	1:A:92[A]:ARG:H	2.02	0.73
4:B:403:SRY:HE11	4:B:403:SRY:H21	1.53	0.72

Continued on next page...

Continued from previous page...

Atom-1	Atom-2	Interatomic distance (Å)	Clash overlap (Å)
1:A:29:ASP:HB3	1:A:49:VAL:HG21	1.72	0.71
1:B:165:LEU:O	1:B:166:GLU:HB2	1.88	0.71
1:B:241:LYS:HA	1:B:244:LYS:HD2	1.72	0.70
1:C:178:ASN:HB3	1:C:181:LEU:HD22	1.74	0.69
1:B:168:ILE:HA	1:B:171:ILE:HD13	1.75	0.69
1:C:256:ARG:HD2	1:C:299:PHE:CD1	2.27	0.69
1:C:93:ILE:HD11	1:C:203:ASN:HA	1.74	0.68
1:B:229:CYS:O	1:B:230:SER:HB3	1.93	0.68
1:C:248:HIS:HD2	1:C:250:ALA:N	1.91	0.68
1:C:150:LEU:HD21	1:C:271:ILE:HA	1.74	0.68
1:C:85:MET:CE	2:C:401:ATP:HN61	2.07	0.68
1:B:265:TRP:HE3	4:B:403:SRY:H631	1.59	0.67
1:B:273:GLY:O	1:B:274:TYR:HB2	1.93	0.67
1:B:242:VAL:O	1:B:243:LEU:HB2	1.93	0.67
4:B:403:SRY:NE1	4:B:403:SRY:H21	2.08	0.67
1:B:51:ILE:HA	1:B:54:LYS:HD2	1.77	0.67
1:C:150:LEU:CD1	1:C:267:ILE:HG23	2.26	0.66
1:B:90:GLY:HA3	1:B:199:ILE:CG2	2.25	0.66
1:B:298:ILE:HG13	1:B:299:PHE:H	1.61	0.66
1:B:267:ILE:O	1:B:271:ILE:HG13	1.97	0.64
1:A:85:MET:HE3	2:A:401:ATP:N6	2.05	0.63
1:A:92[A]:ARG:NE	1:A:92[A]:ARG:H	1.97	0.63
1:B:194:SER:HB3	5:B:350:HOH:O	1.97	0.63
1:A:91:GLU:HG2	1:A:200:PHE:O	1.98	0.63
4:C:403:SRY:HI32	4:C:403:SRY:H22	1.79	0.63
4:C:403:SRY:O51	4:C:403:SRY:H22	1.99	0.62
1:C:142:LYS:HG3	1:C:143:PHE:N	2.15	0.62
1:C:92:ARG:NE	1:C:97:GLN:HE22	1.96	0.61
1:A:160:LEU:HG	1:A:162:ASP:H	1.64	0.60
1:B:280:GLU:O	1:B:281:MET:HG2	2.00	0.60
1:A:92[A]:ARG:HD3	1:A:92[A]:ARG:H	1.66	0.60
1:A:229:CYS:SG	1:A:236:LYS:HD3	2.42	0.60
1:A:172:TYR:O	1:A:176:LEU:HG	2.02	0.60
1:A:1:MET:O	1:A:2:VAL:HB	2.02	0.60
1:C:150:LEU:HD11	1:C:267:ILE:HG23	1.84	0.60
4:C:403:SRY:H23	5:C:341:HOH:O	2.02	0.60
1:A:245:TYR:HD1	1:A:245:TYR:N	1.99	0.59
1:A:92[A]:ARG:N	1:A:92[A]:ARG:HE	1.99	0.59
1:C:103:GLU:O	1:C:107:ASP:HB2	2.01	0.59
1:A:92[A]:ARG:HG2	1:A:93:ILE:N	2.18	0.59
1:A:144:LEU:HD21	1:A:176:LEU:HD11	1.85	0.59

Continued on next page...

Continued from previous page...

Atom-1	Atom-2	Interatomic distance (Å)	Clash overlap (Å)
1:B:267:ILE:HA	1:B:270:ILE:HD12	1.84	0.59
1:A:245:TYR:CD1	1:A:245:TYR:N	2.71	0.57
4:B:403:SRY:H41	4:B:403:SRY:HE11	1.69	0.57
1:B:92:ARG:CD	1:B:93:ILE:H	2.07	0.57
1:A:242:VAL:O	1:A:243:LEU:CB	2.50	0.57
1:C:272:TYR:HD2	1:C:274:TYR:HE2	1.52	0.57
1:C:172:TYR:O	1:C:176:LEU:HG	2.04	0.57
1:B:125:ILE:O	1:B:126:ASP:HB3	2.05	0.57
1:C:60:TYR:CZ	1:C:73:PRO:HG2	2.40	0.56
1:C:268:ASP:O	1:C:271:ILE:HG22	2.04	0.56
1:B:242:VAL:O	1:B:243:LEU:CB	2.52	0.56
1:B:282:LEU:O	1:B:283:ILE:HB	2.05	0.56
4:B:403:SRY:H41	4:B:403:SRY:NE1	2.20	0.56
1:C:150:LEU:HD23	1:C:153:ILE:HD12	1.88	0.56
1:B:163:GLU:H	1:B:164:MET:HE1	1.70	0.56
1:A:45:LYS:HD2	5:A:336:HOH:O	2.05	0.56
1:B:283:ILE:O	1:B:285:GLY:N	2.39	0.56
1:C:167:HIS:O	1:C:171:ILE:HG12	2.05	0.56
1:B:209:ILE:HB	5:B:316:HOH:O	2.06	0.55
4:B:403:SRY:C42	4:B:403:SRY:H51	2.37	0.55
1:B:256:ARG:HD2	1:B:299:PHE:C	2.26	0.55
1:B:165:LEU:HD13	1:B:165:LEU:H	1.70	0.55
1:C:152:SER:HA	1:C:155:GLU:HB2	1.87	0.55
1:A:85:MET:HE2	2:A:401:ATP:N7	2.22	0.55
1:B:91:GLU:HB2	1:B:92:ARG:HG3	1.88	0.55
1:C:149:LEU:O	1:C:153:ILE:HG13	2.06	0.55
1:C:220:ASP:OD1	1:C:248:HIS:HE1	1.89	0.55
1:C:240:ARG:HD2	1:C:255:GLU:OE2	2.05	0.54
1:A:194:SER:HB2	4:A:403:SRY:CH2	2.36	0.54
1:A:98:TYR:CD2	1:A:234:PHE:HB3	2.42	0.54
1:B:91:GLU:HG3	1:B:92:ARG:HD2	1.90	0.54
1:C:150:LEU:HA	1:C:153:ILE:HB	1.90	0.54
1:A:278:ASP:O	1:A:282:LEU:HD11	2.08	0.54
4:B:403:SRY:H51	4:B:403:SRY:H42	1.90	0.53
1:B:164:MET:HE2	1:B:165:LEU:HD13	1.89	0.53
1:B:1:MET:O	1:B:2:VAL:HG13	2.09	0.53
1:A:282:LEU:N	1:A:282:LEU:HD23	2.24	0.53
1:B:227:LEU:HD11	1:B:243:LEU:HD11	1.91	0.53
1:B:265:TRP:CE3	4:B:403:SRY:H631	2.43	0.52
1:B:287:SER:O	1:B:291:GLN:HB2	2.09	0.52
1:A:280:GLU:HA	1:A:283:ILE:HD13	1.91	0.52

Continued on next page...

Continued from previous page...

Atom-1	Atom-2	Interatomic distance (Å)	Clash overlap (Å)
1:C:150:LEU:HD21	1:C:271:ILE:HG13	1.89	0.52
1:C:102:SER:O	1:C:106:LYS:HG3	2.09	0.52
1:A:135:ALA:HB1	1:A:215:ASN:HA	1.92	0.52
1:A:228:ASP:O	1:A:229:CYS:HB2	2.10	0.52
1:C:73:PRO:HB3	1:C:85:MET:CE	2.39	0.51
1:A:92[A]:ARG:NE	1:A:92[A]:ARG:N	2.58	0.51
1:B:164:MET:H	1:B:164:MET:CE	2.23	0.51
1:C:29:ASP:CA	1:C:46:ARG:HH21	2.23	0.51
1:A:273:GLY:HA3	1:A:282:LEU:HD13	1.90	0.51
1:C:76:VAL:HG22	1:C:84:ILE:HB	1.92	0.51
1:C:268:ASP:HA	1:C:271:ILE:CG2	2.41	0.51
1:C:267:ILE:O	1:C:271:ILE:HB	2.10	0.51
1:C:194:SER:O	1:C:198:MET:HG3	2.11	0.51
1:C:94:THR:HG22	1:C:97:GLN:HG2	1.93	0.51
1:C:30:SER:HB3	1:C:44:PRO:HA	1.93	0.51
1:C:237:GLU:CD	1:C:237:GLU:H	2.13	0.51
4:A:403:SRY:C31	4:A:403:SRY:H22	2.40	0.51
1:C:73:PRO:HB3	1:C:85:MET:HE1	1.91	0.51
1:C:192:ASP:HB2	5:C:334:HOH:O	2.11	0.51
1:B:270:ILE:CD1	1:B:289:LEU:HD13	2.40	0.51
1:C:249:LYS:C	1:C:251:PRO:HD3	2.31	0.51
1:A:104:LYS:HE2	1:C:124:GLU:HB3	1.93	0.50
1:A:265:TRP:O	1:A:269:GLN:HG3	2.11	0.50
1:B:230:SER:O	1:B:231:THR:HG23	2.11	0.50
4:B:403:SRY:O42	4:B:403:SRY:H51	2.12	0.50
1:B:107:ASP:HB3	1:B:245:TYR:OH	2.12	0.50
1:B:267:ILE:O	1:B:270:ILE:HB	2.12	0.49
1:A:44:PRO:HG3	1:A:53:GLN:OE1	2.12	0.49
1:B:275:GLU:N	1:B:278:ASP:HB3	2.27	0.49
1:A:283:ILE:N	1:A:283:ILE:HD12	2.27	0.49
1:B:289:LEU:HG	1:B:290:LEU:N	2.28	0.49
1:B:274:TYR:HA	1:B:278:ASP:OD2	2.13	0.49
1:C:220:ASP:HA	1:C:223:PHE:HD1	1.77	0.49
1:C:298:ILE:HG22	1:C:299:PHE:N	2.28	0.49
1:B:262:ASP:O	1:B:265:TRP:HB3	2.13	0.49
1:C:29:ASP:CB	1:C:46:ARG:HH21	2.25	0.49
1:C:125:ILE:O	1:C:126:ASP:HB3	2.13	0.49
1:A:232:ASP:HB3	5:A:345:HOH:O	2.12	0.49
1:A:101:LEU:O	1:A:106:LYS:HE3	2.12	0.49
1:B:280:GLU:C	1:B:281:MET:HG2	2.33	0.48
1:B:159:LEU:HD21	1:B:164:MET:SD	2.54	0.48

Continued on next page...

Continued from previous page...

Atom-1	Atom-2	Interatomic distance (Å)	Clash overlap (Å)
1:A:291:GLN:N	1:A:291:GLN:HE21	2.11	0.48
1:A:65:ASN:O	1:A:67:LYS:N	2.43	0.48
1:B:151:ILE:HD12	1:B:168:ILE:HD11	1.94	0.48
1:B:90:GLY:HA3	1:B:199:ILE:HG23	1.95	0.48
1:B:165:LEU:O	1:B:166:GLU:CB	2.56	0.48
1:C:72:ILE:HB	1:C:73:PRO:HD2	1.96	0.47
1:A:93:ILE:HD11	1:A:203:ASN:HA	1.96	0.47
1:B:100:LYS:NZ	1:B:100:LYS:HB3	2.29	0.47
1:A:121:HIS:HE1	1:A:222:ASP:OD1	1.96	0.47
1:C:152:SER:O	1:C:156:LYS:HG3	2.13	0.47
1:B:129:VAL:HG12	1:B:131:LEU:H	1.80	0.47
1:B:229:CYS:O	1:B:230:SER:CB	2.61	0.47
1:A:92[A]:ARG:CG	1:A:93:ILE:N	2.75	0.47
1:B:164:MET:HA	1:B:167:HIS:HB3	1.96	0.47
1:A:189:VAL:HG23	1:A:222:ASP:CG	2.35	0.47
1:A:65:ASN:C	1:A:67:LYS:H	2.18	0.47
1:C:157:GLU:O	1:C:158:GLN:C	2.52	0.47
1:A:178:ASN:ND2	1:A:299:PHE:H	2.13	0.47
1:C:103:GLU:HG2	5:C:355:HOH:O	2.15	0.46
1:B:42:LYS:O	1:B:44:PRO:HD3	2.15	0.46
1:C:179:ALA:O	1:C:180:VAL:HG22	2.16	0.46
1:B:60:TYR:HE2	1:B:211:PHE:CD2	2.33	0.46
1:B:298:ILE:CG1	1:B:299:PHE:H	2.24	0.46
1:A:112:ASP:HB3	1:A:205:LEU:HB3	1.97	0.46
1:B:194:SER:O	1:B:198:MET:HG3	2.16	0.46
1:A:1:MET:O	1:A:2:VAL:CB	2.63	0.46
1:B:149:LEU:O	1:B:153:ILE:HB	2.16	0.45
1:A:245:TYR:CE1	1:C:127:CYS:HB2	2.51	0.45
1:B:60:TYR:CZ	1:B:73:PRO:HG2	2.52	0.45
1:C:288:GLU:O	1:C:292:THR:HG22	2.16	0.45
1:C:230:SER:OG	1:C:231:THR:N	2.50	0.45
1:C:265:TRP:CH2	4:C:403:SRY:HI33	2.52	0.45
1:C:70:TYR:OH	1:C:112:ASP:HA	2.15	0.45
1:A:255:GLU:O	1:A:259:GLU:HG3	2.17	0.45
1:C:125:ILE:HG23	1:C:132:PHE:CG	2.52	0.45
1:B:149:LEU:HD23	1:B:149:LEU:O	2.16	0.45
1:C:179:ALA:O	1:C:181:LEU:N	2.49	0.45
1:A:267:ILE:O	1:A:271:ILE:HG12	2.17	0.45
1:C:227:LEU:HD11	1:C:243:LEU:HD11	1.99	0.45
1:B:270:ILE:HA	1:B:284:LYS:HB3	1.98	0.44
1:C:272:TYR:C	1:C:274:TYR:H	2.20	0.44

Continued on next page...

Continued from previous page...

Atom-1	Atom-2	Interatomic distance (Å)	Clash overlap (Å)
1:B:97:GLN:HG2	5:B:328:HOH:O	2.17	0.44
1:B:161:THR:HB	1:B:164:MET:CE	2.48	0.44
1:B:137:VAL:HG13	1:B:138:ASN:N	2.32	0.44
1:A:91:GLU:HB2	1:A:92[A]:ARG:NE	2.33	0.44
1:A:42:LYS:HE3	1:A:53:GLN:NE2	2.31	0.44
1:B:283:ILE:HG22	1:B:286:VAL:HG23	2.00	0.44
1:C:268:ASP:HA	1:C:271:ILE:HG22	2.00	0.44
1:B:227:LEU:O	1:B:236:LYS:HE3	2.18	0.44
1:C:12:LEU:HB3	1:C:18:ILE:HD11	2.00	0.44
1:A:141:ASP:OD2	1:A:141:ASP:N	2.51	0.44
1:A:157:GLU:C	1:A:158:GLN:HG3	2.38	0.44
1:B:228:ASP:O	1:B:229:CYS:C	2.56	0.43
1:A:34:LEU:HD22	1:A:37:GLU:HA	1.99	0.43
1:B:284:LYS:O	1:B:285:GLY:C	2.57	0.43
1:C:211:PHE:CD2	1:C:211:PHE:N	2.86	0.43
1:A:220:ASP:HA	1:A:223:PHE:HD1	1.83	0.43
1:C:4:LEU:HD23	1:C:5:ASP:H	1.83	0.43
1:A:154:LEU:HD12	1:A:155:GLU:N	2.33	0.43
1:B:32:THR:HA	1:B:41:VAL:O	2.18	0.43
1:C:179:ALA:C	1:C:181:LEU:H	2.22	0.43
1:A:156:LYS:C	1:A:158:GLN:H	2.22	0.43
1:A:94:THR:H	1:A:97:GLN:CG	2.30	0.43
1:C:4:LEU:HD12	1:C:21:LEU:CD1	2.49	0.43
1:C:13:ASN:HA	1:C:16:ILE:O	2.17	0.43
1:B:165:LEU:O	1:B:165:LEU:HD22	2.18	0.43
1:C:272:TYR:HD2	1:C:274:TYR:CE2	2.35	0.43
1:C:187:CYS:SG	1:C:219:PRO:HG3	2.58	0.43
1:A:249:LYS:O	1:A:251:PRO:HD3	2.19	0.43
1:C:54:LYS:O	1:C:58:GLU:HG3	2.19	0.43
1:B:179:ALA:HB1	1:B:183:LYS:NZ	2.33	0.43
1:A:85:MET:HE1	5:A:312:HOH:O	2.19	0.43
1:B:286:VAL:O	1:B:287:SER:C	2.57	0.43
1:C:47:ASP:HA	1:C:50:ARG:HB2	2.00	0.43
1:A:98:TYR:CE2	1:A:234:PHE:HB3	2.54	0.43
1:A:189:VAL:HG21	1:A:221:ASN:HB2	2.00	0.43
1:C:108:ALA:HB1	1:C:204:ARG:CZ	2.49	0.43
1:B:151:ILE:CD1	1:B:168:ILE:HD11	2.49	0.42
1:B:178:ASN:HB2	1:B:181:LEU:HB2	2.00	0.42
1:C:289:LEU:HD23	1:C:289:LEU:N	2.27	0.42
1:B:298:ILE:HG13	1:B:299:PHE:N	2.31	0.42
1:A:135:ALA:O	1:A:215:ASN:HB2	2.18	0.42

Continued on next page...

Continued from previous page...

Atom-1	Atom-2	Interatomic distance (Å)	Clash overlap (Å)
1:B:142:LYS:HA	1:B:145:GLN:HB2	2.01	0.42
1:C:165:LEU:N	1:C:165:LEU:HD12	2.35	0.42
1:A:284:LYS:HD2	1:A:284:LYS:HA	1.89	0.42
1:B:293:GLN:NE2	1:B:293:GLN:HA	2.35	0.42
1:A:209:ILE:HD12	2:A:401:ATP:C8	2.54	0.42
1:C:123:ILE:O	1:C:125:ILE:HD12	2.19	0.42
1:C:271:ILE:C	1:C:273:GLY:H	2.23	0.42
1:B:73:PRO:HD3	1:B:208:VAL:O	2.19	0.42
1:B:218:ASP:HA	1:B:219:PRO:HD2	1.80	0.42
1:A:151:ILE:HG13	1:A:152:SER:N	2.33	0.42
1:A:227:LEU:HD22	1:A:255:GLU:HG2	2.01	0.42
1:B:59:LEU:HD22	1:B:214:PHE:CG	2.54	0.42
1:B:46:ARG:HG3	1:B:49:VAL:HG23	2.01	0.42
1:B:91:GLU:HG2	1:B:200:PHE:O	2.20	0.42
1:C:298:ILE:CG2	1:C:299:PHE:N	2.83	0.42
1:B:224:LEU:HD12	5:B:355:HOH:O	2.20	0.41
1:B:162:ASP:HA	1:B:165:LEU:HD11	2.01	0.41
1:C:61:ARG:O	1:C:64:GLU:HB2	2.21	0.41
1:C:270:ILE:HD11	1:C:285:GLY:O	2.20	0.41
1:A:266:SER:O	1:A:270:ILE:HG13	2.19	0.41
1:C:43:VAL:HA	1:C:44:PRO:HD2	1.93	0.41
1:C:60:TYR:CE2	1:C:73:PRO:HG2	2.56	0.41
1:B:267:ILE:HG22	1:B:271:ILE:HD11	2.03	0.41
1:B:288:GLU:O	1:B:290:LEU:N	2.53	0.41
1:C:256:ARG:HD2	1:C:299:PHE:CG	2.56	0.41
1:C:272:TYR:CD2	1:C:274:TYR:HE2	2.37	0.41
1:A:95:TYR:CZ	1:A:99:HIS:CE1	3.08	0.41
1:B:148:LYS:HE2	1:B:151:ILE:CG2	2.51	0.41
1:C:16:ILE:HD13	1:C:39:TYR:CD1	2.56	0.41
1:B:140:LYS:HE3	1:B:176:LEU:HD23	2.03	0.41
1:A:167:HIS:HD2	5:A:330:HOH:O	2.04	0.41
1:A:92[A]:ARG:NE	1:A:93:ILE:N	2.68	0.41
1:B:76:VAL:HG22	1:B:84:ILE:HB	2.02	0.40
1:A:211:PHE:O	1:A:214:PHE:HD1	2.04	0.40
1:B:92:ARG:CD	1:B:93:ILE:N	2.74	0.40
1:C:7:GLU:O	1:C:11:HIS:HD2	2.03	0.40
1:C:2:VAL:HG12	1:C:2:VAL:O	2.20	0.40
1:A:233:ASP:HB3	1:A:234:PHE:H	1.69	0.40

There are no symmetry-related clashes.

5.3 Torsion angles

5.3.1 Protein backbone

In the following table, the Percentiles column shows the percent Ramachandran outliers of the chain as a percentile score with respect to all X-ray entries followed by that with respect to entries of similar resolution.

The Analysed column shows the number of residues for which the backbone conformation was analysed, and the total number of residues.

Mol	Chain	Analysed	Favoured	Allowed	Outliers	Percentiles	
1	A	294/299 (98%)	263 (90%)	25 (8%)	6 (2%)	9	7
1	B	293/299 (98%)	255 (87%)	25 (8%)	13 (4%)	3	1
1	C	278/299 (93%)	250 (90%)	22 (8%)	6 (2%)	8	6
All	All	865/897 (96%)	768 (89%)	72 (8%)	25 (3%)	6	3

All (25) Ramachandran outliers are listed below:

Mol	Chain	Res	Type
1	A	2	VAL
1	A	243	LEU
1	B	2	VAL
1	B	230	SER
1	B	243	LEU
1	B	284	LYS
1	B	288	GLU
1	C	180	VAL
1	A	65	ASN
1	B	289	LEU
1	C	2	VAL
1	C	67	LYS
1	C	158	GLN
1	B	92	ARG
1	B	65	ASN
1	B	138	ASN
1	B	229	CYS
1	B	283	ILE
1	B	93	ILE
1	A	66	CYS
1	A	93	ILE
1	C	93	ILE
1	B	298	ILE
1	C	171	ILE

Continued on next page...

Continued from previous page...

Mol	Chain	Res	Type
1	A	271	ILE

5.3.2 Protein sidechains ⓘ

In the following table, the Percentiles column shows the percent sidechain outliers of the chain as a percentile score with respect to all X-ray entries followed by that with respect to entries of similar resolution.

The Analysed column shows the number of residues for which the sidechain conformation was analysed, and the total number of residues.

Mol	Chain	Analysed	Rotameric	Outliers	Percentiles	
1	A	277/278 (100%)	251 (91%)	26 (9%)	11	13
1	B	275/278 (99%)	255 (93%)	20 (7%)	17	23
1	C	263/278 (95%)	237 (90%)	26 (10%)	10	10
All	All	815/834 (98%)	743 (91%)	72 (9%)	13	15

All (72) residues with a non-rotameric sidechain are listed below:

Mol	Chain	Res	Type
1	A	4	LEU
1	A	12	LEU
1	A	34	LEU
1	A	45	LYS
1	A	76	VAL
1	A	92[A]	ARG
1	A	92[B]	ARG
1	A	100	LYS
1	A	104	LYS
1	A	131	LEU
1	A	141	ASP
1	A	142	LYS
1	A	149	LEU
1	A	153	ILE
1	A	157	GLU
1	A	158	GLN
1	A	159	LEU
1	A	164	MET
1	A	189	VAL
1	A	196	ASN
1	A	227	LEU

Continued on next page...

Continued from previous page...

Mol	Chain	Res	Type
1	A	244	LYS
1	A	245	TYR
1	A	256	ARG
1	A	282	LEU
1	A	291	GLN
1	B	4	LEU
1	B	32	THR
1	B	34	LEU
1	B	45	LYS
1	B	46	ARG
1	B	63	LEU
1	B	76	VAL
1	B	92	ARG
1	B	136	LEU
1	B	141	ASP
1	B	148	LYS
1	B	153	ILE
1	B	162	ASP
1	B	164	MET
1	B	165	LEU
1	B	231	THR
1	B	256	ARG
1	B	260	LEU
1	B	263	VAL
1	B	284	LYS
1	C	1	MET
1	C	4	LEU
1	C	12	LEU
1	C	29	ASP
1	C	34	LEU
1	C	63	LEU
1	C	65	ASN
1	C	76	VAL
1	C	104	LYS
1	C	107	ASP
1	C	118	LYS
1	C	131	LEU
1	C	136	LEU
1	C	158	GLN
1	C	173	GLU
1	C	177	ASN
1	C	178	ASN

Continued on next page...

Continued from previous page...

Mol	Chain	Res	Type
1	C	196	ASN
1	C	210	ASP
1	C	211	PHE
1	C	221	ASN
1	C	237	GLU
1	C	256	ARG
1	C	270	ILE
1	C	289	LEU
1	C	292	THR

Some sidechains can be flipped to improve hydrogen bonding and reduce clashes. All (26) such sidechains are listed below:

Mol	Chain	Res	Type
1	A	11	HIS
1	A	15	GLN
1	A	38	GLN
1	A	121	HIS
1	A	178	ASN
1	A	291	GLN
1	B	15	GLN
1	B	38	GLN
1	B	99	HIS
1	B	121	HIS
1	B	138	ASN
1	B	177	ASN
1	B	178	ASN
1	B	293	GLN
1	C	11	HIS
1	C	15	GLN
1	C	38	GLN
1	C	97	GLN
1	C	121	HIS
1	C	158	GLN
1	C	174	ASN
1	C	177	ASN
1	C	196	ASN
1	C	221	ASN
1	C	248	HIS
1	C	291	GLN

5.3.3 RNA ⓘ

There are no RNA molecules in this entry.

5.4 Non-standard residues in protein, DNA, RNA chains ⓘ

There are no non-standard protein/DNA/RNA residues in this entry.

5.5 Carbohydrates ⓘ

There are no carbohydrates in this entry.

5.6 Ligand geometry ⓘ

Of 9 ligands modelled in this entry, 3 are monoatomic - leaving 6 for Mogul analysis.

In the following table, the Counts columns list the number of bonds (or angles) for which Mogul statistics could be retrieved, the number of bonds (or angles) that are observed in the model and the number of bonds (or angles) that are defined in the chemical component dictionary. The Link column lists molecule types, if any, to which the group is linked. The Z score for a bond length (or angle) is the number of standard deviations the observed value is removed from the expected value. A bond length (or angle) with $|Z| > 2$ is considered an outlier worth inspection. RMSZ is the root-mean-square of all Z scores of the bond lengths (or angles).

Mol	Type	Chain	Res	Link	Bond lengths			Bond angles		
					Counts	RMSZ	# $ Z > 2$	Counts	RMSZ	# $ Z > 2$
2	ATP	A	401	-	24,33,33	0.95	1 (4%)	31,52,52	1.99	5 (16%)
4	SRY	A	403	-	33,42,42	0.49	0	36,63,63	0.98	3 (8%)
2	ATP	B	401	-	24,33,33	0.96	1 (4%)	31,52,52	1.95	5 (16%)
4	SRY	B	403	-	33,42,42	0.53	0	36,63,63	1.39	5 (13%)
2	ATP	C	401	3	24,33,33	0.99	1 (4%)	31,52,52	1.85	4 (12%)
4	SRY	C	403	-	33,42,42	0.51	0	36,63,63	1.04	3 (8%)

In the following table, the Chirals column lists the number of chiral outliers, the number of chiral centers analysed, the number of these observed in the model and the number defined in the chemical component dictionary. Similar counts are reported in the Torsion and Rings columns. '-' means no outliers of that kind were identified.

Mol	Type	Chain	Res	Link	Chirals	Torsions	Rings
2	ATP	A	401	-	-	0/18/38/38	0/3/3/3
4	SRY	A	403	-	2/2/17/21	1/16/87/87	0/3/3/3
2	ATP	B	401	-	-	0/18/38/38	0/3/3/3

Continued on next page...

Continued from previous page...

Mol	Type	Chain	Res	Link	Chirals	Torsions	Rings
4	SRY	B	403	-	2/2/17/21	1/16/87/87	0/3/3/3
2	ATP	C	401	3	-	0/18/38/38	0/3/3/3
4	SRY	C	403	-	2/2/17/21	0/16/87/87	0/3/3/3

All (3) bond length outliers are listed below:

Mol	Chain	Res	Type	Atoms	Z	Observed(Å)	Ideal(Å)
2	A	401	ATP	C5-C4	3.00	1.47	1.40
2	B	401	ATP	C5-C4	3.04	1.47	1.40
2	C	401	ATP	C5-C4	3.14	1.47	1.40

All (25) bond angle outliers are listed below:

Mol	Chain	Res	Type	Atoms	Z	Observed(°)	Ideal(°)
2	A	401	ATP	N3-C2-N1	-7.32	123.29	128.89
2	C	401	ATP	N3-C2-N1	-6.87	123.64	128.89
2	B	401	ATP	N3-C2-N1	-6.67	123.79	128.89
2	B	401	ATP	PB-O3B-PG	-3.98	119.33	132.67
4	B	403	SRY	O13-C22-C32	-3.67	102.67	111.52
2	B	401	ATP	PA-O3A-PB	-3.50	122.89	132.73
2	A	401	ATP	PB-O3B-PG	-3.48	121.00	132.67
2	C	401	ATP	PA-O3A-PB	-3.40	123.18	132.73
2	B	401	ATP	C4-C5-N7	-3.39	106.36	109.48
2	A	401	ATP	PA-O3A-PB	-3.38	123.23	132.73
2	A	401	ATP	C4-C5-N7	-3.33	106.41	109.48
2	C	401	ATP	C4-C5-N7	-3.10	106.63	109.48
4	B	403	SRY	C61-C11-N11	-2.95	102.65	111.38
4	C	403	SRY	C61-C11-N11	-2.26	104.68	111.38
4	A	403	SRY	C13-O13-C22	-2.22	112.32	116.30
4	B	403	SRY	C21-C31-N31	-2.19	104.89	111.38
2	C	401	ATP	PB-O3B-PG	-2.19	125.33	132.67
2	B	401	ATP	C2'-C1'-N9	-2.19	110.95	114.29
4	A	403	SRY	C21-C11-N11	-2.08	105.23	111.38
4	A	403	SRY	C61-C11-N11	-2.04	105.34	111.38
4	C	403	SRY	C21-C31-N31	-2.02	105.41	111.38
2	A	401	ATP	C1'-N9-C4	-2.01	123.91	126.94
4	B	403	SRY	C61-C51-C41	2.02	114.03	109.60
4	C	403	SRY	O41-C41-C51	2.30	113.09	107.17
4	B	403	SRY	C51-C61-C11	3.49	115.26	110.43

All (6) chirality outliers are listed below:

Mol	Chain	Res	Type	Atom
4	C	403	SRY	C23
4	C	403	SRY	C33
4	B	403	SRY	C23
4	B	403	SRY	C33
4	A	403	SRY	C23
4	A	403	SRY	C33

All (2) torsion outliers are listed below:

Mol	Chain	Res	Type	Atoms
4	B	403	SRY	C41-O41-C12-C22
4	A	403	SRY	C41-O41-C12-C22

There are no ring outliers.

5 monomers are involved in 22 short contacts:

Mol	Chain	Res	Type	Clashes	Symm-Clashes
2	A	401	ATP	5	0
4	A	403	SRY	2	0
4	B	403	SRY	9	0
2	C	401	ATP	2	0
4	C	403	SRY	4	0

5.7 Other polymers [i](#)

There are no such residues in this entry.

5.8 Polymer linkage issues [i](#)

There are no chain breaks in this entry.

6 Fit of model and data

6.1 Protein, DNA and RNA chains

In the following table, the column labelled ‘#RSRZ> 2’ contains the number (and percentage) of RSRZ outliers, followed by percent RSRZ outliers for the chain as percentile scores relative to all X-ray entries and entries of similar resolution. The OWAB column contains the minimum, median, 95th percentile and maximum values of the occupancy-weighted average B-factor per residue. The column labelled ‘Q< 0.9’ lists the number of (and percentage) of residues with an average occupancy less than 0.9.

Mol	Chain	Analysed	<RSRZ>	#RSRZ>2	OWAB(Å ²)	Q<0.9
1	A	296/299 (98%)	0.38	25 (8%) 14 14	23, 68, 119, 135	4 (1%)
1	B	297/299 (99%)	0.59	35 (11%) 6 5	34, 76, 149, 163	3 (1%)
1	C	284/299 (94%)	0.52	29 (10%) 9 9	19, 70, 141, 161	6 (2%)
All	All	877/897 (97%)	0.50	89 (10%) 9 9	19, 71, 137, 163	13 (1%)

All (89) RSRZ outliers are listed below:

Mol	Chain	Res	Type	RSRZ
1	C	156	LYS	9.8
1	B	282	LEU	9.6
1	B	166	GLU	7.5
1	C	150	LEU	6.8
1	B	154	LEU	6.7
1	B	161	THR	6.2
1	B	160	LEU	6.2
1	B	229	CYS	6.2
1	B	272	TYR	5.7
1	B	283	ILE	5.7
1	C	154	LEU	5.5
1	B	299	PHE	5.5
1	A	274	TYR	5.4
1	C	292	THR	5.0
1	C	286	VAL	5.0
1	C	269	GLN	4.7
1	C	155	GLU	4.3
1	C	166	GLU	4.3
1	C	177	ASN	4.2
1	C	95	TYR	4.1
1	B	274	TYR	3.9
1	B	151	ILE	3.9
1	A	272	TYR	3.8

Continued on next page...

Continued from previous page...

Mol	Chain	Res	Type	RSRZ
1	B	171	ILE	3.7
1	C	142	LYS	3.7
1	B	157	GLU	3.5
1	B	155	GLU	3.5
1	C	158	GLN	3.5
1	A	232	ASP	3.4
1	C	153	ILE	3.4
1	C	169	GLU	3.4
1	B	287	SER	3.4
1	A	162	ASP	3.3
1	A	299	PHE	3.3
1	A	279	ARG	3.1
1	A	282	LEU	3.1
1	B	281	MET	3.1
1	C	287	SER	3.0
1	B	244	LYS	2.9
1	B	280	GLU	2.9
1	C	254	ALA	2.9
1	A	281	MET	2.8
1	C	181	LEU	2.8
1	C	244	LYS	2.8
1	C	167	HIS	2.8
1	C	270	ILE	2.7
1	B	149	LEU	2.7
1	A	283	ILE	2.6
1	C	144	LEU	2.6
1	B	245	TYR	2.6
1	A	144	LEU	2.6
1	A	271	ILE	2.6
1	B	173	GLU	2.6
1	C	274	TYR	2.6
1	B	230	SER	2.6
1	A	160	LEU	2.5
1	C	289	LEU	2.5
1	B	158	GLN	2.5
1	B	125	ILE	2.5
1	A	293	GLN	2.5
1	C	176	LEU	2.5
1	A	230	SER	2.4
1	A	132	PHE	2.4
1	C	253	VAL	2.4
1	C	168	ILE	2.4

Continued on next page...

Continued from previous page...

Mol	Chain	Res	Type	RSRZ
1	B	164	MET	2.4
1	C	152	SER	2.4
1	A	278	ASP	2.4
1	B	153	ILE	2.4
1	B	298	ILE	2.4
1	B	140	LYS	2.3
1	B	138	ASN	2.3
1	C	159	LEU	2.3
1	B	295	GLU	2.3
1	A	288	GLU	2.2
1	A	183	LYS	2.2
1	A	156	LYS	2.2
1	A	290	LEU	2.2
1	B	260	LEU	2.2
1	B	289	LEU	2.2
1	C	252	GLU	2.1
1	A	244	LYS	2.1
1	A	154	LEU	2.1
1	B	177	ASN	2.1
1	A	236	LYS	2.1
1	B	167	HIS	2.1
1	B	139	LYS	2.0
1	A	152	SER	2.0
1	A	284	LYS	2.0

6.2 Non-standard residues in protein, DNA, RNA chains [i](#)

There are no non-standard protein/DNA/RNA residues in this entry.

6.3 Carbohydrates [i](#)

There are no carbohydrates in this entry.

6.4 Ligands [i](#)

In the following table, the Atoms column lists the number of modelled atoms in the group and the number defined in the chemical component dictionary. LLDF column lists the quality of electron density of the group with respect to its neighbouring residues in protein, DNA or RNA chains. The B-factors column lists the minimum, median, 95th percentile and maximum values of B factors of atoms in the group. The column labelled 'Q < 0.9' lists the number of atoms with occupancy less than 0.9.

Mol	Type	Chain	Res	Atoms	RSCC	RSR	LLDF	B-factors(\AA^2)	Q<0.9
4	SRY	C	403	40/40	0.66	0.52	8.77	69,85,94,99	40
4	SRY	B	403	40/40	0.46	0.47	3.23	62,77,88,89	40
4	SRY	A	403	40/40	0.70	0.41	2.40	47,63,78,81	39
2	ATP	B	401	31/31	0.90	0.14	-0.24	52,74,95,233	0
2	ATP	A	401	31/31	0.91	0.15	-0.33	27,40,65,83	8
2	ATP	C	401	31/31	0.94	0.13	-0.65	27,39,62,112	0
3	MG	B	402	1/1	0.88	0.21	-	126,126,126,126	0
3	MG	C	402	1/1	0.91	0.28	-	38,38,38,38	0
3	MG	A	402	1/1	0.70	0.31	-	79,79,79,79	0

6.5 Other polymers ⓘ

There are no such residues in this entry.