



# Full wwPDB X-ray Structure Validation Report ⓘ

Feb 1, 2016 – 05:08 PM GMT

PDB ID : 4HAP  
Title : Crystal Structure of a GH7 family cellobiohydrolase from *Limnoria quadripunctata* in complex with cellobiose  
Authors : Martin, R.N.A.; McGeehan, J.E.; Streeter, S.D.; Cragg, S.M.; Guille, M.J.; Schnorr, K.M.; Kern, M.; Bruce, N.C.; McQueen-Mason, S.J.  
Deposited on : 2012-09-27  
Resolution : 1.60 Å(reported)

This is a Full wwPDB X-ray Structure Validation Report for a publicly released PDB entry.  
We welcome your comments at [validation@mail.wwpdb.org](mailto:validation@mail.wwpdb.org)  
A user guide is available at  
<http://wwpdb.org/validation/2016/XrayValidationReportHelp>  
with specific help available everywhere you see the ⓘ symbol.

---

The following versions of software and data (see [references ⓘ](#)) were used in the production of this report:

MolProbity : 4.02b-467  
Mogul : 1.7 (RC4), CSD as536be (2015)  
Xtriage (Phenix) : 1.9-1692  
EDS : rb-20026688  
Percentile statistics : 20151230.v01 (using entries in the PDB archive December 30th 2015)  
Refmac : 5.8.0135  
CCP4 : 6.5.0  
Ideal geometry (proteins) : Engh & Huber (2001)  
Ideal geometry (DNA, RNA) : Parkinson et al. (1996)  
Validation Pipeline (wwPDB-VP) : trunk26865

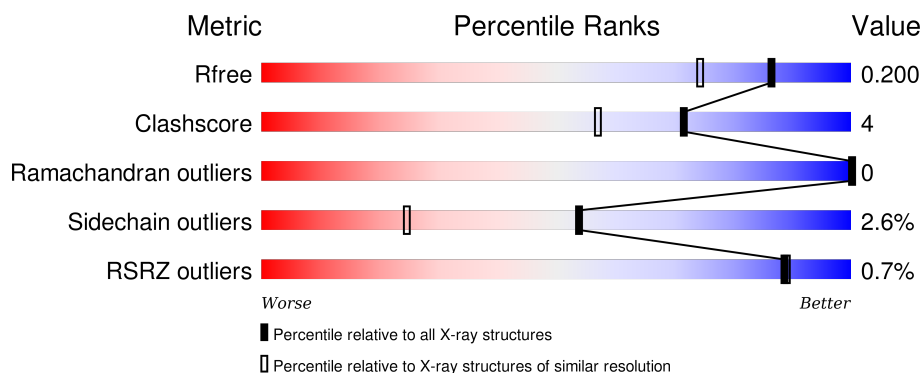
# 1 Overall quality at a glance

The following experimental techniques were used to determine the structure:

## *X-RAY DIFFRACTION*



The reported resolution of this entry is 1.60 Å.

Percentile scores (ranging between 0-100) for global validation metrics of the entry are shown in the following graphic. The table shows the number of entries on which the scores are based.



Metric	Whole archive (#Entries)	Similar resolution (#Entries, resolution range(Å))
$R_{free}$	91344	2475 (1.60-1.60)
Clashscore	102246	2732 (1.60-1.60)
Ramachandran outliers	100387	2654 (1.60-1.60)
Sidechain outliers	100360	2653 (1.60-1.60)
RSRZ outliers	91569	2479 (1.60-1.60)

The table below summarises the geometric issues observed across the polymeric chains and their fit to the electron density. The red, orange, yellow and green segments on the lower bar indicate the fraction of residues that contain outliers for  $\geq 3$ , 2, 1 and 0 types of geometric quality criteria. A grey segment represents the fraction of residues that are not modelled. The numeric value for each fraction is indicated below the corresponding segment, with a dot representing fractions  $\leq 5\%$ . The upper red bar (where present) indicates the fraction of residues that have poor fit to the electron density. The numeric value is given above the bar.

Mol	Chain	Length	Quality of chain
1	A	431	 90% 9% .
1	B	431	 90% 9% .

The following table lists non-polymeric compounds, carbohydrate monomers and non-standard residues in protein, DNA, RNA chains that are outliers for geometric or electron-density-fit criteria:

Mol	Type	Chain	Res	Chirality	Geometry	Clashes	Electron density
2	CBI	A	501	-	-	-	X
2	CBI	B	501	-	-	-	X
3	CA	A	505	-	-	-	X
4	TRS	A	506[A]	-	-	X	X
4	TRS	A	506[B]	-	-	-	X

## 2 Entry composition [i](#)

There are 5 unique types of molecules in this entry. The entry contains 7924 atoms, of which 0 are hydrogens and 0 are deuteriums.

In the tables below, the ZeroOcc column contains the number of atoms modelled with zero occupancy, the AltConf column contains the number of residues with at least one atom in alternate conformation and the Trace column contains the number of residues modelled with at most 2 atoms.

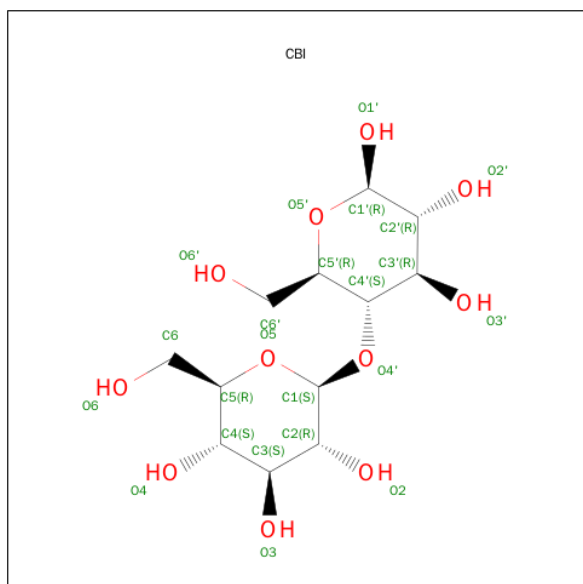
- Molecule 1 is a protein called GH7 family protein.

Mol	Chain	Residues	Atoms					ZeroOcc	AltConf	Trace
1	A	431	Total	C	N	O	S	0	10	0
			3300	2031	530	712	27			
1	B	431	Total	C	N	O	S	0	10	0
			3296	2029	530	710	27			

There are 2 discrepancies between the modelled and reference sequences:

Chain	Residue	Modelled	Actual	Comment	Reference
A	23	PCA	-	EXPRESSION TAG	UNP D4HRL0
B	23	PCA	-	EXPRESSION TAG	UNP D4HRL0

- Molecule 2 is SUGAR (CELLOBIOSE) (three-letter code: CBI) (formula:  $C_{12}H_{22}O_{11}$ ).



Mol	Chain	Residues	Atoms			ZeroOcc	AltConf
2	A	1	Total	C	O	0	0
			23	12	11		

*Continued on next page...*

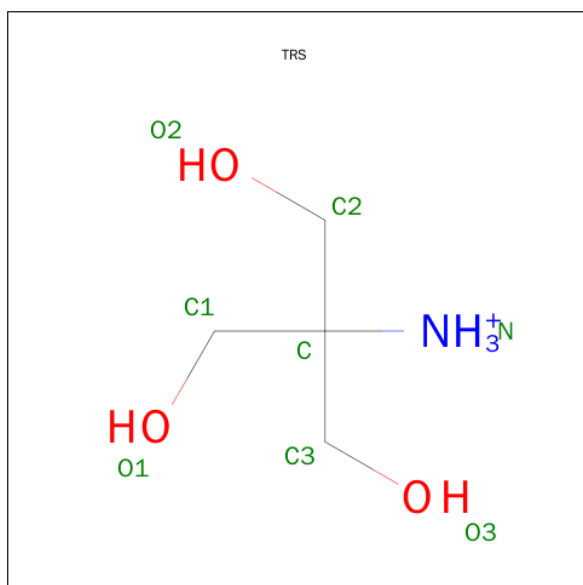
Continued from previous page...

Mol	Chain	Residues	Atoms			ZeroOcc	AltConf
2	B	1	Total	C	O	0	0
			23	12	11		

- Molecule 3 is CALCIUM ION (three-letter code: CA) (formula: Ca).

Mol	Chain	Residues	Atoms		ZeroOcc	AltConf
3	B	1	Total	Ca	0	0
			1	1		
3	A	4	Total	Ca	0	0
			4	4		

- Molecule 4 is 2-AMINO-2-HYDROXYMETHYL-PROPANE-1,3-DIOL (three-letter code: TRS) (formula: C<sub>4</sub>H<sub>12</sub>NO<sub>3</sub>).



Mol	Chain	Residues	Atoms				ZeroOcc	AltConf
4	A	1	Total	C	N	O	0	1
			16	8	2	6		

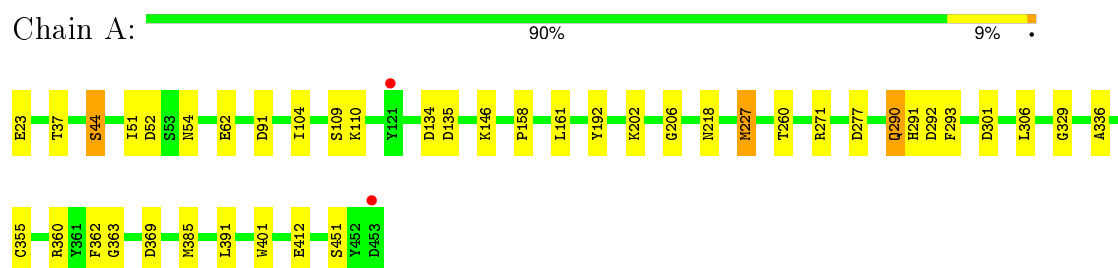
- Molecule 5 is water.

Mol	Chain	Residues	Atoms		ZeroOcc	AltConf
5	A	647	Total	O	0	0
			647	647		
5	B	614	Total	O	0	0
			614	614		

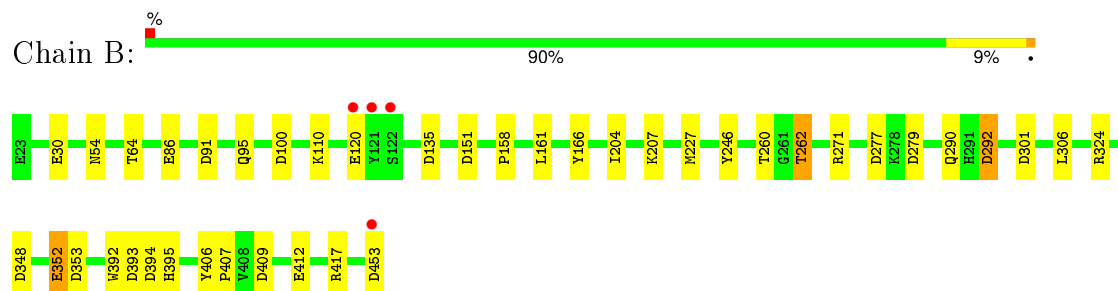
### 3 Residue-property plots [i](#)

These plots are drawn for all protein, RNA and DNA chains in the entry. The first graphic for a chain summarises the proportions of errors displayed in the second graphic. The second graphic shows the sequence view annotated by issues in geometry and electron density. Residues are color-coded according to the number of geometric quality criteria for which they contain at least one outlier: green = 0, yellow = 1, orange = 2 and red = 3 or more. A red dot above a residue indicates a poor fit to the electron density ( $\text{RSRZ} > 2$ ). Stretches of 2 or more consecutive residues without any outlier are shown as a green connector. Residues present in the sample, but not in the model, are shown in grey.

- Molecule 1: GH7 family protein



- Molecule 1: GH7 family protein



## 4 Data and refinement statistics

Property	Value	Source
Space group	P 1	Depositor
Cell constants a, b, c, $\alpha$ , $\beta$ , $\gamma$	52.26Å 54.19Å 72.45Å 94.26° 96.02° 94.99°	Depositor
Resolution (Å)	39.90 – 1.60 39.90 – 1.60	Depositor EDS
% Data completeness (in resolution range)	93.4 (39.90-1.60) 91.2 (39.90-1.60)	Depositor EDS
$R_{merge}$	(Not available)	Depositor
$R_{sym}$	0.11	Depositor
$\langle I/\sigma(I) \rangle$ <sup>1</sup>	2.07 (at 1.60Å)	Xtriage
Refinement program	REFMAC 5.7.0029	Depositor
R, $R_{free}$	0.144 , 0.191 0.156 , 0.200	Depositor DCC
$R_{free}$ test set	4846 reflections (5.27%)	DCC
Wilson B-factor (Å <sup>2</sup> )	11.2	Xtriage
Anisotropy	0.052	Xtriage
Bulk solvent $k_{sol}$ (e/Å <sup>3</sup> ), $B_{sol}$ (Å <sup>2</sup> )	0.33 , 34.8	EDS
Estimated twinning fraction	0.021 for -k,-h,-l	Xtriage
L-test for twinning <sup>2</sup>	$\langle  L  \rangle = 0.48$ , $\langle L^2 \rangle = 0.32$	Xtriage
Outliers	0 of 96745 reflections	Xtriage
$F_o, F_c$ correlation	0.96	EDS
Total number of atoms	7924	wwPDB-VP
Average B, all atoms (Å <sup>2</sup> )	14.0	wwPDB-VP

Xtriage's analysis on translational NCS is as follows: *The largest off-origin peak in the Patterson function is 8.19% of the height of the origin peak. No significant pseudotranslation is detected.*

<sup>1</sup>Intensities estimated from amplitudes.

<sup>2</sup>Theoretical values of  $\langle |L| \rangle$ ,  $\langle L^2 \rangle$  for acentric reflections are 0.5, 0.375 respectively for untwinned datasets, and 0.333, 0.2 for perfectly twinned datasets.

## 5 Model quality ⓘ

### 5.1 Standard geometry ⓘ

Bond lengths and bond angles in the following residue types are not validated in this section: CA, PCA, TRS, CBI

The Z score for a bond length (or angle) is the number of standard deviations the observed value is removed from the expected value. A bond length (or angle) with  $|Z| > 5$  is considered an outlier worth inspection. RMSZ is the root-mean-square of all Z scores of the bond lengths (or angles).

Mol	Chain	Bond lengths		Bond angles	
		RMSZ	$\# Z  > 5$	RMSZ	$\# Z  > 5$
1	A	1.04	1/3397 (0.0%)	1.07	14/4623 (0.3%)
1	B	1.05	2/3393 (0.1%)	1.06	17/4618 (0.4%)
All	All	1.05	3/6790 (0.0%)	1.07	31/9241 (0.3%)

All (3) bond length outliers are listed below:

Mol	Chain	Res	Type	Atoms	Z	Observed(Å)	Ideal(Å)
1	A	192	TYR	CG-CD2	-5.83	1.31	1.39
1	B	246	TYR	CE1-CZ	-5.67	1.31	1.38
1	B	352	GLU	CD-OE2	5.05	1.31	1.25

All (31) bond angle outliers are listed below:

Mol	Chain	Res	Type	Atoms	Z	Observed(°)	Ideal(°)
1	A	134	ASP	CB-CG-OD1	8.78	126.20	118.30
1	A	227[A]	MET	CG-SD-CE	-7.73	87.84	100.20
1	A	227[B]	MET	CG-SD-CE	-7.73	87.84	100.20
1	A	360	ARG	NE-CZ-NH2	-7.42	116.59	120.30
1	B	277	ASP	CB-CG-OD2	-7.28	111.75	118.30
1	A	301	ASP	CB-CG-OD1	7.24	124.82	118.30
1	B	409	ASP	CB-CG-OD2	6.85	124.46	118.30
1	B	279	ASP	CB-CG-OD1	6.49	124.14	118.30
1	B	324	ARG	NE-CZ-NH1	-6.47	117.07	120.30
1	B	301	ASP	CB-CG-OD2	-6.34	112.59	118.30
1	B	151	ASP	CB-CG-OD2	-6.33	112.60	118.30
1	B	301	ASP	CB-CG-OD1	6.32	123.99	118.30
1	A	277	ASP	CB-CG-OD2	-6.31	112.62	118.30
1	A	360	ARG	NE-CZ-NH1	6.20	123.40	120.30
1	B	394	ASP	CB-CG-OD1	6.19	123.87	118.30
1	A	271	ARG	NE-CZ-NH1	6.16	123.38	120.30

*Continued on next page...*



*Continued from previous page...*

Mol	Chain	Res	Type	Atoms	Z	Observed(°)	Ideal(°)
1	B	348	ASP	CB-CG-OD2	-6.14	112.77	118.30
1	A	52	ASP	CB-CG-OD1	5.97	123.67	118.30
1	A	135	ASP	CB-CG-OD1	5.97	123.67	118.30
1	B	417	ARG	NE-CZ-NH2	-5.96	117.32	120.30
1	A	301	ASP	CB-CG-OD2	-5.69	113.17	118.30
1	B	100	ASP	CB-CG-OD1	5.65	123.39	118.30
1	B	353	ASP	CB-CG-OD1	5.61	123.35	118.30
1	A	369[A]	ASP	CB-CG-OD1	5.38	123.15	118.30
1	A	369[B]	ASP	CB-CG-OD1	5.38	123.15	118.30
1	B	279	ASP	CB-CG-OD2	-5.34	113.49	118.30
1	B	135	ASP	CB-CG-OD1	5.29	123.06	118.30
1	B	166	TYR	CB-CG-CD1	5.27	124.16	121.00
1	B	151	ASP	CB-CG-OD1	5.10	122.89	118.30
1	A	202	LYS	CD-CE-NZ	5.08	123.38	111.70
1	B	353	ASP	CB-CG-OD2	-5.06	113.74	118.30

There are no chirality outliers.

There are no planarity outliers.

## 5.2 Too-close contacts ⓘ

In the following table, the Non-H and H(model) columns list the number of non-hydrogen atoms and hydrogen atoms in the chain respectively. The H(added) column lists the number of hydrogen atoms added and optimized by MolProbity. The Clashes column lists the number of clashes within the asymmetric unit, whereas Symm-Clashes lists symmetry related clashes.

Mol	Chain	Non-H	H(model)	H(added)	Clashes	Symm-Clashes
1	A	3300	0	2970	34	0
1	B	3296	0	2972	20	1
2	A	23	0	22	2	0
2	B	23	0	22	1	0
3	A	4	0	0	0	0
3	B	1	0	0	0	0
4	A	16	0	24	11	0
5	A	647	0	0	13	4
5	B	614	0	0	9	5
All	All	7924	0	6010	55	5

The all-atom clashscore is defined as the number of clashes found per 1000 atoms (including hydrogen atoms). The all-atom clashscore for this structure is 4.

All (55) close contacts within the same asymmetric unit are listed below, sorted by their clash

magnitude.

Atom-1	Atom-2	Interatomic distance (Å)	Clash overlap (Å)
1:A:412:GLU:OE1	4:A:506[B]:TRS:H12	1.22	1.34
1:A:385:MET:SD	5:A:1195:HOH:O	1.93	1.21
1:A:355:CYS:HB3	5:A:1196:HOH:O	0.95	1.11
1:A:385:MET:CE	5:A:1195:HOH:O	2.06	1.01
1:B:292:ASP:HB3	5:B:1093:HOH:O	1.60	0.99
1:B:207:LYS:HE2	5:B:1083:HOH:O	1.75	0.85
1:B:227[A]:MET:SD	5:B:1048:HOH:O	2.35	0.84
1:B:227[B]:MET:SD	1:B:260:THR:CG2	2.67	0.83
1:A:362:PHE:O	4:A:506[A]:TRS:H11	1.82	0.80
1:A:412:GLU:OE1	4:A:506[B]:TRS:C1	2.19	0.78
1:A:292:ASP:HB3	5:A:1125:HOH:O	1.83	0.78
1:B:262[B]:THR:HG22	5:B:1047:HOH:O	1.84	0.76
1:A:412:GLU:OE1	4:A:506[A]:TRS:C2	2.34	0.75
1:A:362:PHE:O	4:A:506[A]:TRS:C1	2.35	0.74
1:A:412:GLU:OE1	4:A:506[A]:TRS:H21	1.88	0.73
1:B:227[B]:MET:SD	1:B:260:THR:HG22	2.30	0.72
1:B:352:GLU:HG2	5:B:1141:HOH:O	1.90	0.71
1:A:363:GLY:HA3	4:A:506[B]:TRS:H32	1.73	0.69
1:A:227[B]:MET:SD	1:A:260:THR:CG2	2.81	0.68
1:A:227[B]:MET:SD	1:A:260:THR:HG22	2.33	0.68
1:B:86:GLU:OE2	5:B:1168:HOH:O	2.10	0.68
1:A:385:MET:HE3	5:A:1195:HOH:O	1.79	0.66
1:A:291:HIS:O	5:A:1013:HOH:O	2.13	0.65
1:A:158:PRO:HD2	1:A:161[A]:LEU:HD12	1.80	0.62
1:A:227[B]:MET:HE1	5:A:960:HOH:O	1.98	0.62
4:A:506[A]:TRS:H21	5:A:828:HOH:O	2.01	0.60
1:A:329:GLY:HA3	1:B:95:GLN:HG3	1.86	0.56
1:A:23:PCA:OE	1:A:206:GLY:HA2	2.06	0.55
1:A:363:GLY:CA	4:A:506[A]:TRS:H11	2.40	0.52
2:A:501:CBI:O3'	5:A:1180:HOH:O	2.18	0.51
1:A:44[A]:SER:OG	5:A:1008:HOH:O	2.08	0.51
1:B:204:ILE:HG21	1:B:227[A]:MET:HG2	1.93	0.51
1:A:110[A]:LYS:HD3	5:A:1207:HOH:O	2.10	0.50
1:A:363:GLY:HA3	4:A:506[A]:TRS:H11	1.94	0.49
1:B:227[B]:MET:SD	1:B:260:THR:HG23	2.53	0.48
1:A:363:GLY:HA3	4:A:506[B]:TRS:C3	2.43	0.48
1:A:158:PRO:HG2	1:A:161[B]:LEU:HD13	1.94	0.48
1:A:290:GLN:HE21	1:A:290:GLN:HA	1.79	0.48
1:A:158:PRO:HD2	1:A:161[A]:LEU:CD1	2.45	0.47
1:B:395:HIS:HE1	5:B:1137:HOH:O	1.97	0.47
1:B:271:ARG:NH2	2:B:501:CBI:H3'	2.30	0.46

*Continued on next page...*

Continued from previous page...

Atom-1	Atom-2	Interatomic distance (Å)	Clash overlap (Å)
1:A:37[B]:THR:HG1	1:A:109[B]:SER:HG	1.57	0.46
1:A:293:PHE:CD1	1:A:336:ALA:HB2	2.50	0.46
1:A:292:ASP:CB	5:A:1125:HOH:O	2.54	0.45
1:B:406:TYR:HA	1:B:407:PRO:C	2.37	0.45
1:A:51:ILE:HD11	1:A:104:ILE:HD12	1.98	0.45
1:B:110[A]:LYS:HB3	1:B:110[A]:LYS:HE3	1.74	0.45
1:B:392:TRP:HE3	1:B:393:ASP:O	2.00	0.44
1:A:401:TRP:CH2	2:A:501:CBI:H5	2.53	0.43
1:A:161[A]:LEU:HD22	1:A:391:LEU:HD11	1.99	0.43
1:A:146:LYS:HE3	5:A:1065:HOH:O	2.19	0.43
1:B:86:GLU:HG3	5:B:1082:HOH:O	2.20	0.41
1:B:207:LYS:CE	5:B:1083:HOH:O	2.50	0.41
1:B:158:PRO:HD2	1:B:161:LEU:HD22	2.03	0.41

All (5) symmetry-related close contacts are listed below. The label for Atom-2 includes the symmetry operator and encoded unit-cell translations to be applied.

Atom-1	Atom-2	Interatomic distance (Å)	Clash overlap (Å)
1:B:412:GLU:OE2	5:B:979:HOH:O[1_455]	1.75	0.45
5:A:860:HOH:O	5:B:610:HOH:O[1_566]	1.85	0.35
5:A:1145:HOH:O	5:B:1055:HOH:O[1_565]	2.11	0.09
5:A:862:HOH:O	5:B:787:HOH:O[1_566]	2.15	0.05
5:A:1125:HOH:O	5:B:1096:HOH:O[1_655]	2.15	0.05

## 5.3 Torsion angles [i](#)

### 5.3.1 Protein backbone [i](#)

In the following table, the Percentiles column shows the percent Ramachandran outliers of the chain as a percentile score with respect to all X-ray entries followed by that with respect to entries of similar resolution.

The Analysed column shows the number of residues for which the backbone conformation was analysed, and the total number of residues.

Mol	Chain	Analysed	Favoured	Allowed	Outliers	Percentiles	
1	A	439/431 (102%)	429 (98%)	10 (2%)	0	100	100
1	B	439/431 (102%)	430 (98%)	9 (2%)	0	100	100
All	All	878/862 (102%)	859 (98%)	19 (2%)	0	100	100

There are no Ramachandran outliers to report.

### 5.3.2 Protein sidechains ⓘ

In the following table, the Percentiles column shows the percent sidechain outliers of the chain as a percentile score with respect to all X-ray entries followed by that with respect to entries of similar resolution.

The Analysed column shows the number of residues for which the sidechain conformation was analysed, and the total number of residues.

Mol	Chain	Analysed	Rotameric	Outliers	Percentiles	
1	A	361/351 (103%)	352 (98%)	9 (2%)	55	26
1	B	361/351 (103%)	350 (97%)	11 (3%)	48	19
All	All	722/702 (103%)	702 (97%)	20 (3%)	54	22

All (20) residues with a non-rotameric sidechain are listed below:

Mol	Chain	Res	Type
1	A	44[A]	SER
1	A	44[B]	SER
1	A	54	ASN
1	A	62	GLU
1	A	91	ASP
1	A	218	ASN
1	A	290	GLN
1	A	306	LEU
1	A	451	SER
1	B	30	GLU
1	B	54	ASN
1	B	64	THR
1	B	91	ASP
1	B	120	GLU
1	B	262[A]	THR
1	B	262[B]	THR
1	B	290	GLN
1	B	292	ASP
1	B	306	LEU
1	B	453	ASP

Some sidechains can be flipped to improve hydrogen bonding and reduce clashes. All (9) such sidechains are listed below:

Mol	Chain	Res	Type
1	A	95	GLN
1	A	156	ASN
1	A	218	ASN
1	A	290	GLN
1	A	433	ASN
1	B	156	ASN
1	B	290	GLN
1	B	395	HIS
1	B	433	ASN

### 5.3.3 RNA ⓘ

There are no RNA molecules in this entry.

## 5.4 Non-standard residues in protein, DNA, RNA chains ⓘ

2 non-standard protein/DNA/RNA residues are modelled in this entry.

In the following table, the Counts columns list the number of bonds (or angles) for which Mogul statistics could be retrieved, the number of bonds (or angles) that are observed in the model and the number of bonds (or angles) that are defined in the chemical component dictionary. The Link column lists molecule types, if any, to which the group is linked. The Z score for a bond length (or angle) is the number of standard deviations the observed value is removed from the expected value. A bond length (or angle) with  $|Z| > 2$  is considered an outlier worth inspection. RMSZ is the root-mean-square of all Z scores of the bond lengths (or angles).

Mol	Type	Chain	Res	Link	Bond lengths			Bond angles		
					Counts	RMSZ	$\# Z  > 2$	Counts	RMSZ	$\# Z  > 2$
1	PCA	A	23	1	7,8,9	0.65	0	9,10,12	1.31	1 (11%)
1	PCA	B	23	1	7,8,9	0.70	0	9,10,12	1.21	2 (22%)

In the following table, the Chirals column lists the number of chiral outliers, the number of chiral centers analysed, the number of these observed in the model and the number defined in the chemical component dictionary. Similar counts are reported in the Torsion and Rings columns. '-' means no outliers of that kind were identified.

Mol	Type	Chain	Res	Link	Chirals	Torsions	Rings
1	PCA	A	23	1	-	0/0/11/13	0/1/1/1
1	PCA	B	23	1	-	0/0/11/13	0/1/1/1

There are no bond length outliers.

All (3) bond angle outliers are listed below:

Mol	Chain	Res	Type	Atoms	Z	Observed(°)	Ideal(°)
1	A	23	PCA	CB-CA-C	-2.89	108.81	112.76
1	B	23	PCA	CB-CA-C	-2.10	109.89	112.76
1	B	23	PCA	O-C-CA	-2.09	119.93	125.44

There are no chirality outliers.

There are no torsion outliers.

There are no ring outliers.

1 monomer is involved in 1 short contact:

Mol	Chain	Res	Type	Clashes	Symm-Clashes
1	A	23	PCA	1	0

## 5.5 Carbohydrates [i](#)

There are no carbohydrates in this entry.

## 5.6 Ligand geometry [i](#)

Of 9 ligands modelled in this entry, 5 are monoatomic - leaving 4 for Mogul analysis.

In the following table, the Counts columns list the number of bonds (or angles) for which Mogul statistics could be retrieved, the number of bonds (or angles) that are observed in the model and the number of bonds (or angles) that are defined in the chemical component dictionary. The Link column lists molecule types, if any, to which the group is linked. The Z score for a bond length (or angle) is the number of standard deviations the observed value is removed from the expected value. A bond length (or angle) with  $|Z| > 2$  is considered an outlier worth inspection. RMSZ is the root-mean-square of all Z scores of the bond lengths (or angles).

Mol	Type	Chain	Res	Link	Bond lengths			Bond angles		
					Counts	RMSZ	# Z  > 2	Counts	RMSZ	# Z  > 2
2	CBI	A	501	-	24,24,24	1.27	2 (8%)	35,35,35	2.25	11 (31%)
4	TRS	A	506[A]	-	7,7,7	1.45	1 (14%)	9,9,9	2.84	6 (66%)
4	TRS	A	506[B]	-	7,7,7	0.97	0	9,9,9	2.56	4 (44%)
2	CBI	B	501	-	24,24,24	1.39	3 (12%)	35,35,35	2.42	17 (48%)

In the following table, the Chirals column lists the number of chiral outliers, the number of chiral centers analysed, the number of these observed in the model and the number defined in the chemical component dictionary. Similar counts are reported in the Torsion and Rings columns. '-' means no outliers of that kind were identified.

Mol	Type	Chain	Res	Link	Chirals	Torsions	Rings
2	CBI	A	501	-	-	0/8/48/48	0/2/2/2
4	TRS	A	506[A]	-	-	0/9/9/9	0/0/0/0
4	TRS	A	506[B]	-	-	0/9/9/9	0/0/0/0
2	CBI	B	501	-	-	0/8/48/48	0/2/2/2

All (6) bond length outliers are listed below:

Mol	Chain	Res	Type	Atoms	Z	Observed(Å)	Ideal(Å)
2	A	501	CBI	O4'-C4'	-2.86	1.36	1.43
2	B	501	CBI	O5'-C5'	-2.69	1.37	1.44
4	A	506[A]	TRS	C2-C	-2.45	1.48	1.53
2	A	501	CBI	O4-C4	2.73	1.49	1.43
2	B	501	CBI	O4-C4	3.06	1.50	1.43
2	B	501	CBI	O3-C3	3.76	1.52	1.43

All (38) bond angle outliers are listed below:

Mol	Chain	Res	Type	Atoms	Z	Observed(°)	Ideal(°)
2	A	501	CBI	O2-C2-C1	-6.82	95.08	110.02
2	B	501	CBI	C1-O5-C5	-5.21	103.64	113.75
2	B	501	CBI	O2-C2-C1	-4.60	99.93	110.02
2	A	501	CBI	O3'-C3'-C4'	-3.89	100.66	109.87
4	A	506[A]	TRS	O3-C3-C	-3.71	103.67	111.18
2	B	501	CBI	C1'-O5'-C5'	-3.61	106.79	113.47
4	A	506[A]	TRS	O2-C2-C	-3.52	104.05	111.18
2	B	501	CBI	O5'-C5'-C6'	-3.49	97.54	106.36
2	A	501	CBI	C1'-O5'-C5'	-3.39	107.19	113.47
4	A	506[A]	TRS	C2-C-N	-3.38	101.93	108.09
2	A	501	CBI	O5'-C5'-C6'	-3.20	98.27	106.36
4	A	506[B]	TRS	O2-C2-C	-3.15	104.80	111.18
2	B	501	CBI	C4-C3-C2	-3.13	104.95	110.79
2	B	501	CBI	O1'-C1'-O5'	-3.06	101.87	110.25
2	B	501	CBI	O4'-C1-C2	-2.85	101.18	108.10
2	B	501	CBI	O5-C1-C2	-2.40	105.34	110.28
2	A	501	CBI	C3-C4-C5	-2.40	106.01	110.20
4	A	506[A]	TRS	C3-C-C1	-2.35	105.70	110.78
2	A	501	CBI	O1'-C1'-O5'	-2.34	103.85	110.25
4	A	506[A]	TRS	O1-C1-C	-2.30	106.54	111.18
2	B	501	CBI	O3'-C3'-C4'	-2.17	104.73	109.87
2	B	501	CBI	C3-C4-C5	-2.07	106.59	110.20
2	B	501	CBI	C1-O4'-C4'	2.05	123.35	118.01
2	A	501	CBI	O3-C3-C2	2.20	115.29	110.34
2	B	501	CBI	O2-C2-C3	2.37	115.66	110.34

*Continued on next page...*

*Continued from previous page...*

Mol	Chain	Res	Type	Atoms	Z	Observed(°)	Ideal(°)
2	B	501	CBI	O1'-C1'-C2'	2.39	115.61	109.21
2	A	501	CBI	O3-C3-C4	2.68	116.38	110.34
2	B	501	CBI	O5-C5-C4	2.69	114.73	109.68
2	B	501	CBI	O4'-C1-O5	2.70	117.51	110.68
4	A	506[B]	TRS	O1-C1-C	2.72	116.69	111.18
4	A	506[B]	TRS	C3-C-N	2.87	113.31	108.09
2	A	501	CBI	O4'-C4'-C5'	2.95	117.07	109.32
2	A	501	CBI	O3'-C3'-C2'	3.09	117.29	110.34
2	B	501	CBI	O3'-C3'-C2'	3.35	117.89	110.34
2	A	501	CBI	O5-C5-C4	3.60	116.45	109.68
4	A	506[A]	TRS	C3-C-C2	4.42	120.35	110.78
4	A	506[B]	TRS	O3-C3-C	4.79	120.88	111.18
2	B	501	CBI	O3-C3-C4	5.93	123.68	110.34

There are no chirality outliers.

There are no torsion outliers.

There are no ring outliers.

4 monomers are involved in 14 short contacts:

Mol	Chain	Res	Type	Clashes	Symm-Clashes
2	A	501	CBI	2	0
4	A	506[A]	TRS	7	0
4	A	506[B]	TRS	4	0
2	B	501	CBI	1	0

## 5.7 Other polymers [i](#)

There are no such residues in this entry.

## 5.8 Polymer linkage issues [i](#)

There are no chain breaks in this entry.



## 6 Fit of model and data [i](#)

### 6.1 Protein, DNA and RNA chains [i](#)

In the following table, the column labelled ‘#RSRZ> 2’ contains the number (and percentage) of RSRZ outliers, followed by percent RSRZ outliers for the chain as percentile scores relative to all X-ray entries and entries of similar resolution. The OWAB column contains the minimum, median, 95<sup>th</sup> percentile and maximum values of the occupancy-weighted average B-factor per residue. The column labelled ‘Q< 0.9’ lists the number of (and percentage) of residues with an average occupancy less than 0.9.

Mol	Chain	Analysed	<RSRZ>	#RSRZ>2	OWAB(Å <sup>2</sup> )	Q<0.9
1	A	430/431 (99%)	-0.42	2 (0%) 91 91	5, 11, 23, 61	0
1	B	430/431 (99%)	-0.43	4 (0%) 85 85	4, 11, 23, 62	0
All	All	860/862 (99%)	-0.42	6 (0%) 89 89	4, 11, 23, 62	0

All (6) RSRZ outliers are listed below:

Mol	Chain	Res	Type	RSRZ
1	B	121	TYR	5.3
1	B	453	ASP	4.7
1	A	453	ASP	3.9
1	A	121	TYR	3.7
1	B	120	GLU	2.6
1	B	122	SER	2.4

### 6.2 Non-standard residues in protein, DNA, RNA chains [i](#)

In the following table, the Atoms column lists the number of modelled atoms in the group and the number defined in the chemical component dictionary. LLDF column lists the quality of electron density of the group with respect to its neighbouring residues in protein, DNA or RNA chains. The B-factors column lists the minimum, median, 95<sup>th</sup> percentile and maximum values of B factors of atoms in the group. The column labelled ‘Q< 0.9’ lists the number of atoms with occupancy less than 0.9.

Mol	Type	Chain	Res	Atoms	RSCC	RSR	LLDF	B-factors(Å <sup>2</sup> )	Q<0.9
1	PCA	B	23	8/9	0.97	0.06	-	8,9,9,10	0
1	PCA	A	23	8/9	0.97	0.06	-	8,9,11,12	0

### 6.3 Carbohydrates [i](#)

There are no carbohydrates in this entry.

## 6.4 Ligands [i](#)

In the following table, the Atoms column lists the number of modelled atoms in the group and the number defined in the chemical component dictionary. LLDF column lists the quality of electron density of the group with respect to its neighbouring residues in protein, DNA or RNA chains. The B-factors column lists the minimum, median, 95<sup>th</sup> percentile and maximum values of B factors of atoms in the group. The column labelled 'Q< 0.9' lists the number of atoms with occupancy less than 0.9.

Mol	Type	Chain	Res	Atoms	RSCC	RSR	LLDF	B-factors(Å <sup>2</sup> )	Q<0.9
4	TRS	A	506[B]	8/8	0.76	0.22	22.58	15,18,19,21	8
4	TRS	A	506[A]	8/8	0.76	0.22	21.65	12,16,19,23	8
3	CA	A	505	1/1	0.71	0.22	18.40	72,72,72,72	0
2	CBI	B	501	23/23	0.91	0.10	3.49	17,22,24,26	0
2	CBI	A	501	23/23	0.92	0.10	3.25	15,20,23,24	0
3	CA	A	504	1/1	0.95	0.19	-	56,56,56,56	0
3	CA	A	503	1/1	0.97	0.17	-	40,40,40,40	0
3	CA	B	502	1/1	0.99	0.15	-	41,41,41,41	0
3	CA	A	502	1/1	0.98	0.10	-	36,36,36,36	0

## 6.5 Other polymers [i](#)

There are no such residues in this entry.