



# Full wwPDB X-ray Structure Validation Report ⓘ

Feb 19, 2016 – 11:07 PM GMT

PDB ID : 5HBG  
Title : Crystal structure of Cysteine synthase from Helicobacter pylori  
Authors : Tarique, K.F.; Abdul Rehman, S.A.; Gourinath, S.  
Deposited on : 2015-12-31  
Resolution : 1.90 Å(reported)

This is a Full wwPDB X-ray Structure Validation Report for a publicly released PDB entry.  
We welcome your comments at [validation@mail.wwpdb.org](mailto:validation@mail.wwpdb.org)  
A user guide is available at  
<http://wwpdb.org/validation/2016/XrayValidationReportHelp>  
with specific help available everywhere you see the ⓘ symbol.

---

The following versions of software and data (see [references ⓘ](#)) were used in the production of this report:

MolProbity : 4.02b-467  
Mogul : 1.7.1 (RC1), CSD as537be (2016)  
Xtriage (Phenix) : 1.9-1692  
EDS : rb-20026982  
Percentile statistics : 20151230.v01 (using entries in the PDB archive December 30th 2015)  
Refmac : 5.8.0135  
CCP4 : 6.5.0  
Ideal geometry (proteins) : Engh & Huber (2001)  
Ideal geometry (DNA, RNA) : Parkinson et al. (1996)  
Validation Pipeline (wwPDB-VP) : rb-20026982

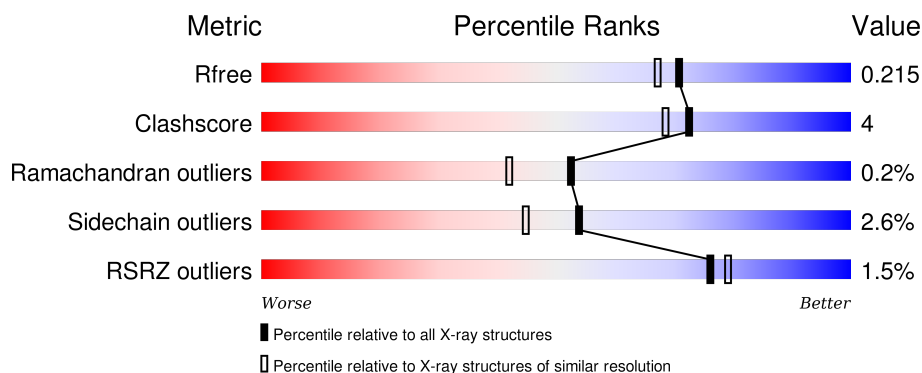
# 1 Overall quality at a glance

The following experimental techniques were used to determine the structure:

## *X-RAY DIFFRACTION*


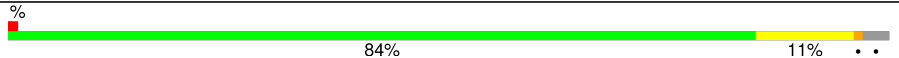
The reported resolution of this entry is 1.90 Å.

Percentile scores (ranging between 0-100) for global validation metrics of the entry are shown in the following graphic. The table shows the number of entries on which the scores are based.



Metric	Whole archive (#Entries)	Similar resolution (#Entries, resolution range(Å))
$R_{free}$	91344	4755 (1.90-1.90)
Clashscore	102246	5398 (1.90-1.90)
Ramachandran outliers	100387	5338 (1.90-1.90)
Sidechain outliers	100360	5339 (1.90-1.90)
RSRZ outliers	91569	4766 (1.90-1.90)

The table below summarises the geometric issues observed across the polymeric chains and their fit to the electron density. The red, orange, yellow and green segments on the lower bar indicate the fraction of residues that contain outliers for  $\geq 3$ , 2, 1 and 0 types of geometric quality criteria. A grey segment represents the fraction of residues that are not modelled. The numeric value for each fraction is indicated below the corresponding segment, with a dot representing fractions  $\leq 5\%$ . The upper red bar (where present) indicates the fraction of residues that have poor fit to the electron density. The numeric value is given above the bar.

Mol	Chain	Length	Quality of chain
1	A	314	
1	B	314	

The following table lists non-polymeric compounds, carbohydrate monomers and non-standard residues in protein, DNA, RNA chains that are outliers for geometric or electron-density-fit criteria:

Mol	Type	Chain	Res	Chirality	Geometry	Clashes	Electron density
2	OAS	B	401	-	-	X	X

## 2 Entry composition

There are 3 unique types of molecules in this entry. The entry contains 4827 atoms, of which 0 are hydrogens and 0 are deuteriums.

In the tables below, the ZeroOcc column contains the number of atoms modelled with zero occupancy, the AltConf column contains the number of residues with at least one atom in alternate conformation and the Trace column contains the number of residues modelled with at most 2 atoms.

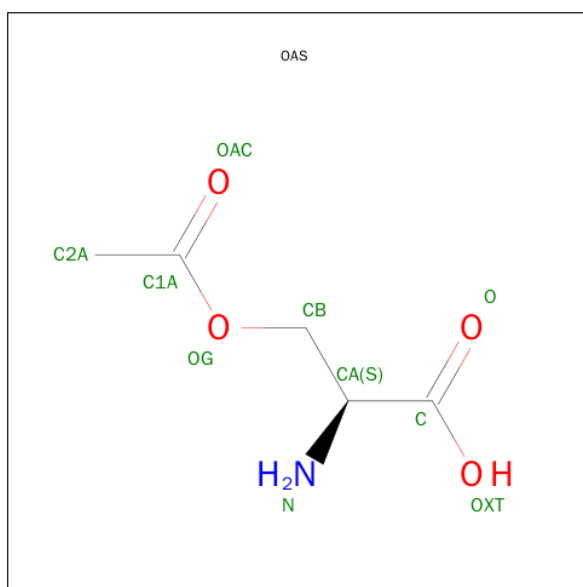
- Molecule 1 is a protein called Cysteine synthase.

Mol	Chain	Residues	Atoms						ZeroOcc	AltConf	Trace
1	A	306	Total	C	N	O	P	S	0	0	0
			2340	1503	383	449	1	4			
1	B	306	Total	C	N	O	P	S	0	0	0
			2340	1503	383	449	1	4			

There are 16 discrepancies between the modelled and reference sequences:

Chain	Residue	Modelled	Actual	Comment	Reference
A	307	LEU	-	expression tag	UNP P56067
A	308	GLN	-	expression tag	UNP P56067
A	309	HIS	-	expression tag	UNP P56067
A	310	HIS	-	expression tag	UNP P56067
A	311	HIS	-	expression tag	UNP P56067
A	312	HIS	-	expression tag	UNP P56067
A	313	HIS	-	expression tag	UNP P56067
A	314	HIS	-	expression tag	UNP P56067
B	307	LEU	-	expression tag	UNP P56067
B	308	GLN	-	expression tag	UNP P56067
B	309	HIS	-	expression tag	UNP P56067
B	310	HIS	-	expression tag	UNP P56067
B	311	HIS	-	expression tag	UNP P56067
B	312	HIS	-	expression tag	UNP P56067
B	313	HIS	-	expression tag	UNP P56067
B	314	HIS	-	expression tag	UNP P56067

- Molecule 2 is O-ACETYLSERINE (three-letter code: OAS) (formula: C<sub>5</sub>H<sub>9</sub>NO<sub>4</sub>).



Mol	Chain	Residues	Atoms				ZeroOcc	AltConf
2	B	1	Total	C	N	O	0	0
			10	5	1	4		

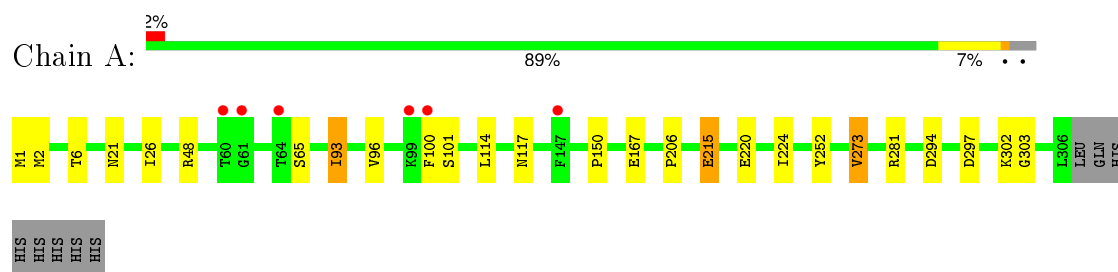
- Molecule 3 is water.

Mol	Chain	Residues	Atoms		ZeroOcc	AltConf
3	A	67	Total	O	0	0
			67	67		
3	B	70	Total	O	0	0
			70	70		

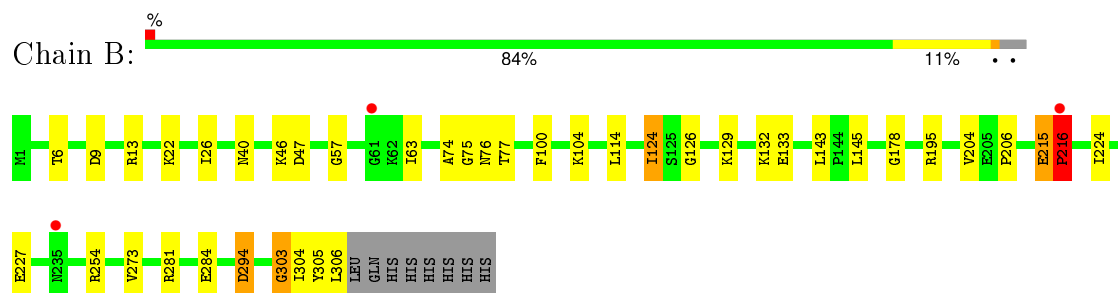
### 3 Residue-property plots [i](#)

These plots are drawn for all protein, RNA and DNA chains in the entry. The first graphic for a chain summarises the proportions of errors displayed in the second graphic. The second graphic shows the sequence view annotated by issues in geometry and electron density. Residues are color-coded according to the number of geometric quality criteria for which they contain at least one outlier: green = 0, yellow = 1, orange = 2 and red = 3 or more. A red dot above a residue indicates a poor fit to the electron density ( $\text{RSRZ} > 2$ ). Stretches of 2 or more consecutive residues without any outlier are shown as a green connector. Residues present in the sample, but not in the model, are shown in grey.

#### • Molecule 1: Cysteine synthase



#### • Molecule 1: Cysteine synthase



## 4 Data and refinement statistics

Property	Value	Source
Space group	P 2 <sub>1</sub> 2 <sub>1</sub> 2 <sub>1</sub>	Depositor
Cell constants a, b, c, $\alpha$ , $\beta$ , $\gamma$	71.41Å 82.72Å 96.14Å 90.00° 90.00° 90.00°	Depositor
Resolution (Å)	50.00 – 1.90 48.07 – 1.90	Depositor EDS
% Data completeness (in resolution range)	99.8 (50.00-1.90) 99.8 (48.07-1.90)	Depositor EDS
$R_{merge}$	(Not available)	Depositor
$R_{sym}$	0.12	Depositor
$\langle I/\sigma(I) \rangle$ <sup>1</sup>	5.14 (at 1.91Å)	Xtriage
Refinement program	REFMAC 5.6.0117	Depositor
R, $R_{free}$	0.186 , 0.216 0.186 , 0.215	Depositor DCC
$R_{free}$ test set	2279 reflections (5.29%)	DCC
Wilson B-factor (Å <sup>2</sup> )	24.4	Xtriage
Anisotropy	0.447	Xtriage
Bulk solvent $k_{sol}$ (e/Å <sup>3</sup> ), $B_{sol}$ (Å <sup>2</sup> )	0.33 , 40.5	EDS
Estimated twinning fraction	No twinning to report.	Xtriage
L-test for twinning <sup>2</sup>	$\langle  L  \rangle = 0.47$ , $\langle L^2 \rangle = 0.30$	Xtriage
Outliers	1 of 45368 reflections (0.002%)	Xtriage
$F_o, F_c$ correlation	0.96	EDS
Total number of atoms	4827	wwPDB-VP
Average B, all atoms (Å <sup>2</sup> )	34.0	wwPDB-VP

Xtriage's analysis on translational NCS is as follows: *The analyses of the Patterson function reveals a significant off-origin peak that is 37.85 % of the origin peak, indicating pseudo translational symmetry. The chance of finding a peak of this or larger height randomly in a structure without pseudo translational symmetry is equal to 4.0262e-04. The detected translational NCS is most likely also responsible for the elevated intensity ratio.*

<sup>1</sup>Intensities estimated from amplitudes.

<sup>2</sup>Theoretical values of  $\langle |L| \rangle$ ,  $\langle L^2 \rangle$  for acentric reflections are 0.5, 0.375 respectively for untwinned datasets, and 0.333, 0.2 for perfectly twinned datasets.

## 5 Model quality [i](#)

### 5.1 Standard geometry [i](#)

Bond lengths and bond angles in the following residue types are not validated in this section: LLP, OAS

The Z score for a bond length (or angle) is the number of standard deviations the observed value is removed from the expected value. A bond length (or angle) with  $|Z| > 5$  is considered an outlier worth inspection. RMSZ is the root-mean-square of all Z scores of the bond lengths (or angles).

Mol	Chain	Bond lengths		Bond angles	
		RMSZ	$\# Z  > 5$	RMSZ	$\# Z  > 5$
1	A	1.02	1/2364 (0.0%)	0.99	5/3204 (0.2%)
1	B	1.11	2/2364 (0.1%)	1.06	9/3204 (0.3%)
All	All	1.06	3/4728 (0.1%)	1.03	14/6408 (0.2%)

Chiral center outliers are detected by calculating the chiral volume of a chiral center and verifying if the center is modelled as a planar moiety or with the opposite hand. A planarity outlier is detected by checking planarity of atoms in a peptide group, atoms in a mainchain group or atoms of a sidechain that are expected to be planar.

Mol	Chain	#Chirality outliers	#Planarity outliers
1	A	0	1
1	B	0	2
All	All	0	3

All (3) bond length outliers are listed below:

Mol	Chain	Res	Type	Atoms	Z	Observed(Å)	Ideal(Å)
1	A	167	GLU	CD-OE2	6.87	1.33	1.25
1	B	126	GLY	N-CA	5.49	1.54	1.46
1	B	284	GLU	CD-OE1	5.34	1.31	1.25

All (14) bond angle outliers are listed below:

Mol	Chain	Res	Type	Atoms	Z	Observed(°)	Ideal(°)
1	A	48	ARG	NE-CZ-NH1	9.07	124.83	120.30
1	B	195	ARG	NE-CZ-NH1	8.25	124.43	120.30
1	B	281	ARG	NE-CZ-NH1	7.14	123.87	120.30
1	B	195	ARG	NE-CZ-NH2	-6.09	117.25	120.30
1	A	302	LYS	C-N-CA	-5.87	109.97	122.30
1	A	281	ARG	NE-CZ-NH1	5.80	123.20	120.30

*Continued on next page...*



*Continued from previous page...*

Mol	Chain	Res	Type	Atoms	Z	Observed(°)	Ideal(°)
1	B	273	VAL	CG1-CB-CG2	-5.54	102.03	110.90
1	A	48	ARG	NE-CZ-NH2	-5.54	117.53	120.30
1	A	273	VAL	CG1-CB-CG2	-5.49	102.12	110.90
1	B	216	PRO	N-CA-C	-5.32	98.27	112.10
1	B	9	ASP	CB-CG-OD2	-5.27	113.56	118.30
1	B	26	ILE	CA-CB-CG2	5.26	121.42	110.90
1	B	294	ASP	CB-CG-OD1	5.16	122.95	118.30
1	B	114	LEU	CB-CG-CD1	5.00	119.51	111.00

There are no chirality outliers.

All (3) planarity outliers are listed below:

Mol	Chain	Res	Type	Group
1	A	303	GLY	Peptide
1	B	215	GLU	Peptide
1	B	303	GLY	Peptide

## 5.2 Too-close contacts [i](#)

In the following table, the Non-H and H(model) columns list the number of non-hydrogen atoms and hydrogen atoms in the chain respectively. The H(added) column lists the number of hydrogen atoms added and optimized by MolProbity. The Clashes column lists the number of clashes within the asymmetric unit, whereas Symm-Clashes lists symmetry related clashes.

Mol	Chain	Non-H	H(model)	H(added)	Clashes	Symm-Clashes
1	A	2340	0	2368	12	0
1	B	2340	0	2367	29	0
2	B	10	0	8	13	0
3	A	67	0	0	1	0
3	B	70	0	0	1	0
All	All	4827	0	4743	40	0

The all-atom clashscore is defined as the number of clashes found per 1000 atoms (including hydrogen atoms). The all-atom clashscore for this structure is 4.

All (40) close contacts within the same asymmetric unit are listed below, sorted by their clash magnitude.

Atom-1	Atom-2	Interatomic distance (Å)	Clash overlap (Å)
1:B:76:ASN:H	2:B:401:OAS:HC23	1.25	1.00

*Continued on next page...*

*Continued from previous page...*

Atom-1	Atom-2	Interatomic distance (Å)	Clash overlap (Å)
1:B:76:ASN:H	2:B:401:OAS:C2A	1.77	0.97
1:B:76:ASN:N	2:B:401:OAS:HC23	1.85	0.90
1:B:104:LYS:NZ	2:B:401:OAS:HC21	1.91	0.85
1:B:104:LYS:HZ3	2:B:401:OAS:HC21	1.43	0.82
1:B:76:ASN:N	2:B:401:OAS:C2A	2.51	0.68
1:B:77:THR:H	2:B:401:OAS:HB3	1.59	0.67
1:B:305:TYR:O	1:B:306:LEU:HD23	1.97	0.65
1:B:215:GLU:HB2	1:B:216:PRO:HG3	1.79	0.63
1:A:252:TYR:CD1	1:A:273:VAL:CG1	2.82	0.62
1:B:75:GLY:N	2:B:401:OAS:HC22	2.15	0.61
1:B:254:ARG:HD3	3:B:542:HOH:O	2.02	0.60
1:B:206:PRO:HD3	1:B:224:ILE:HG13	1.84	0.58
1:B:143:LEU:HG	1:B:145:LEU:HG	1.86	0.57
1:A:100:PHE:O	1:A:101:SER:C	2.43	0.56
1:A:1:MET:HB2	1:B:13:ARG:O	2.07	0.53
1:B:57:GLY:HA3	1:B:63:ILE:HD12	1.91	0.52
1:A:252:TYR:CG	1:A:273:VAL:CG1	2.92	0.52
1:B:76:ASN:CB	2:B:401:OAS:HC23	2.40	0.51
1:B:215:GLU:HB2	1:B:216:PRO:CG	2.41	0.51
1:B:215:GLU:HB2	1:B:216:PRO:CD	2.41	0.51
1:A:252:TYR:CD1	1:A:273:VAL:HG12	2.46	0.50
1:A:96:VAL:O	1:A:117:ASN:HA	2.12	0.50
1:B:76:ASN:H	2:B:401:OAS:HC22	1.70	0.50
1:B:74:ALA:C	2:B:401:OAS:HC22	2.32	0.49
1:B:40:ASN:HB3	1:B:47:ASP:OD2	2.14	0.47
1:B:104:LYS:HZ2	2:B:401:OAS:HC21	1.78	0.47
1:B:303:GLY:O	1:B:304:ILE:C	2.53	0.47
1:B:74:ALA:HA	1:B:100:PHE:HD2	1.80	0.46
1:A:93:ILE:HD13	1:A:114:LEU:HD23	1.98	0.45
1:B:178:GLY:HA2	1:B:204:VAL:HB	1.99	0.45
1:B:129:LYS:O	1:B:133:GLU:HG3	2.16	0.45
1:A:215:GLU:H	1:A:215:GLU:HG2	1.64	0.44
1:A:21:ASN:HB3	1:A:26:ILE:O	2.19	0.43
1:A:1:MET:HG3	1:A:2:MET:HG2	2.00	0.42
1:B:304:ILE:O	1:B:305:TYR:HB2	2.20	0.42
1:B:124:ILE:N	1:B:227:GLU:OE2	2.43	0.42
1:B:46:LLP:O3	2:B:401:OAS:C1A	2.68	0.41
1:A:1:MET:N	3:A:402:HOH:O	2.46	0.41
1:A:206:PRO:HD3	1:A:224:ILE:HG13	2.03	0.40

There are no symmetry-related clashes.

## 5.3 Torsion angles [i](#)

### 5.3.1 Protein backbone [i](#)

In the following table, the Percentiles column shows the percent Ramachandran outliers of the chain as a percentile score with respect to all X-ray entries followed by that with respect to entries of similar resolution.

The Analysed column shows the number of residues for which the backbone conformation was analysed, and the total number of residues.

Mol	Chain	Analysed	Favoured	Allowed	Outliers	Percentiles	
1	A	303/314 (96%)	290 (96%)	13 (4%)	0	100	100
1	B	303/314 (96%)	289 (95%)	13 (4%)	1 (0%)	46	35
All	All	606/628 (96%)	579 (96%)	26 (4%)	1 (0%)	52	42

All (1) Ramachandran outliers are listed below:

Mol	Chain	Res	Type
1	B	216	PRO

### 5.3.2 Protein sidechains [i](#)

In the following table, the Percentiles column shows the percent sidechain outliers of the chain as a percentile score with respect to all X-ray entries followed by that with respect to entries of similar resolution.

The Analysed column shows the number of residues for which the sidechain conformation was analysed, and the total number of residues.

Mol	Chain	Analysed	Rotameric	Outliers	Percentiles	
1	A	248/256 (97%)	240 (97%)	8 (3%)	46	35
1	B	248/256 (97%)	243 (98%)	5 (2%)	63	57
All	All	496/512 (97%)	483 (97%)	13 (3%)	54	45

All (13) residues with a non-rotameric sidechain are listed below:

Mol	Chain	Res	Type
1	A	6	THR
1	A	65	SER
1	A	93	ILE
1	A	150	PRO
1	A	215	GLU

*Continued on next page...*

*Continued from previous page...*

Mol	Chain	Res	Type
1	A	220	GLU
1	A	294	ASP
1	A	297	ASP
1	B	6	THR
1	B	22	LYS
1	B	124	ILE
1	B	132	LYS
1	B	294	ASP

Some sidechains can be flipped to improve hydrogen bonding and reduce clashes. All (6) such sidechains are listed below:

Mol	Chain	Res	Type
1	A	8	GLN
1	A	29	ASN
1	A	51	GLN
1	B	89	HIS
1	B	146	GLN
1	B	260	ASN

### 5.3.3 RNA ⓘ

There are no RNA molecules in this entry.

## 5.4 Non-standard residues in protein, DNA, RNA chains ⓘ

2 non-standard protein/DNA/RNA residues are modelled in this entry.

In the following table, the Counts columns list the number of bonds (or angles) for which Mogul statistics could be retrieved, the number of bonds (or angles) that are observed in the model and the number of bonds (or angles) that are defined in the chemical component dictionary. The Link column lists molecule types, if any, to which the group is linked. The Z score for a bond length (or angle) is the number of standard deviations the observed value is removed from the expected value. A bond length (or angle) with  $|Z| > 2$  is considered an outlier worth inspection. RMSZ is the root-mean-square of all Z scores of the bond lengths (or angles).

Mol	Type	Chain	Res	Link	Bond lengths			Bond angles		
					Counts	RMSZ	# Z  > 2	Counts	RMSZ	# Z  > 2
1	LLP	A	46	1	22,24,25	3.44	7 (31%)	28,32,34	1.93	10 (35%)
1	LLP	B	46	1	22,24,25	3.45	5 (22%)	28,32,34	1.75	6 (21%)

In the following table, the Chirals column lists the number of chiral outliers, the number of chiral

centers analysed, the number of these observed in the model and the number defined in the chemical component dictionary. Similar counts are reported in the Torsion and Rings columns. '-' means no outliers of that kind were identified.

Mol	Type	Chain	Res	Link	Chirals	Torsions	Rings
1	LLP	A	46	1	-	1/15/17/19	0/1/1/1
1	LLP	B	46	1	-	1/15/17/19	0/1/1/1

All (12) bond length outliers are listed below:

Mol	Chain	Res	Type	Atoms	Z	Observed(Å)	Ideal(Å)
1	A	46	LLP	CB-CA	-2.30	1.50	1.53
1	A	46	LLP	C6-C5	2.35	1.42	1.37
1	B	46	LLP	C4-C5	3.72	1.46	1.42
1	B	46	LLP	C4-C4'	4.18	1.53	1.46
1	B	46	LLP	C4-C3	4.74	1.47	1.40
1	A	46	LLP	C4-C3	4.79	1.47	1.40
1	A	46	LLP	C4-C4'	4.80	1.54	1.46
1	A	46	LLP	C4-C5	5.42	1.49	1.42
1	B	46	LLP	C4'-NZ	5.60	1.44	1.27
1	A	46	LLP	C4'-NZ	6.16	1.45	1.27
1	A	46	LLP	C3-C2	11.39	1.48	1.40
1	B	46	LLP	C3-C2	12.56	1.49	1.40

All (16) bond angle outliers are listed below:

Mol	Chain	Res	Type	Atoms	Z	Observed(°)	Ideal(°)
1	A	46	LLP	C2'-C2-C3	-4.41	116.43	120.90
1	B	46	LLP	P-OP4-C5'	-4.21	111.05	120.79
1	A	46	LLP	C3-C4-C5	-3.54	115.69	118.26
1	B	46	LLP	C3-C4-C5	-3.45	115.76	118.26
1	A	46	LLP	CD-CE-NZ	-3.32	105.47	110.94
1	B	46	LLP	O-C-CA	-2.84	118.12	125.72
1	A	46	LLP	OP2-P-OP4	-2.57	99.21	106.72
1	A	46	LLP	P-OP4-C5'	-2.54	114.92	120.79
1	A	46	LLP	C6-N1-C2	2.05	123.38	119.26
1	A	46	LLP	C5-C4-C4'	2.25	124.89	121.41
1	A	46	LLP	O3-C3-C2	2.31	120.91	117.53
1	B	46	LLP	C3-C4-C4'	2.34	123.16	120.13
1	A	46	LLP	C2'-C2-N1	2.64	123.79	117.96
1	B	46	LLP	OP3-P-OP1	2.65	119.28	110.63
1	B	46	LLP	O3-C3-C2	2.71	121.50	117.53
1	A	46	LLP	OP3-P-OP2	3.64	120.79	107.44

There are no chirality outliers.

All (2) torsion outliers are listed below:

Mol	Chain	Res	Type	Atoms
1	B	46	LLP	C4-C4'-NZ-CE
1	A	46	LLP	C4-C4'-NZ-CE

There are no ring outliers.

1 monomer is involved in 1 short contact:

Mol	Chain	Res	Type	Clashes	Symm-Clashes
1	B	46	LLP	1	0

## 5.5 Carbohydrates [i](#)

There are no carbohydrates in this entry.

## 5.6 Ligand geometry [i](#)

1 ligand is modelled in this entry.

In the following table, the Counts columns list the number of bonds (or angles) for which Mogul statistics could be retrieved, the number of bonds (or angles) that are observed in the model and the number of bonds (or angles) that are defined in the chemical component dictionary. The Link column lists molecule types, if any, to which the group is linked. The Z score for a bond length (or angle) is the number of standard deviations the observed value is removed from the expected value. A bond length (or angle) with  $|Z| > 2$  is considered an outlier worth inspection. RMSZ is the root-mean-square of all Z scores of the bond lengths (or angles).

Mol	Type	Chain	Res	Link	Bond lengths			Bond angles		
					Counts	RMSZ	$\# Z  > 2$	Counts	RMSZ	$\# Z  > 2$
2	OAS	B	401	-	6,9,9	1.29	1 (16%)	5,11,11	2.21	3 (60%)

In the following table, the Chirals column lists the number of chiral outliers, the number of chiral centers analysed, the number of these observed in the model and the number defined in the chemical component dictionary. Similar counts are reported in the Torsion and Rings columns. '-' means no outliers of that kind were identified.

Mol	Type	Chain	Res	Link	Chirals	Torsions	Rings
2	OAS	B	401	-	-	0/5/9/9	0/0/0/0

All (1) bond length outliers are listed below:

Mol	Chain	Res	Type	Atoms	Z	Observed(Å)	Ideal(Å)
2	B	401	OAS	OG-C1A	2.94	1.48	1.33

All (3) bond angle outliers are listed below:

Mol	Chain	Res	Type	Atoms	Z	Observed( $^{\circ}$ )	Ideal( $^{\circ}$ )
2	B	401	OAS	OAC-C1A-C2A	-2.22	116.66	124.87
2	B	401	OAS	OG-C1A-C2A	2.20	122.09	112.37
2	B	401	OAS	CB-OG-C1A	3.81	126.67	117.12

There are no chirality outliers.

There are no torsion outliers.

There are no ring outliers.

1 monomer is involved in 13 short contacts:

Mol	Chain	Res	Type	Clashes	Symm-Clashes
2	B	401	OAS	13	0

## 5.7 Other polymers [i](#)

There are no such residues in this entry.

## 5.8 Polymer linkage issues [i](#)

There are no chain breaks in this entry.

## 6 Fit of model and data

### 6.1 Protein, DNA and RNA chains

In the following table, the column labelled ‘#RSRZ> 2’ contains the number (and percentage) of RSRZ outliers, followed by percent RSRZ outliers for the chain as percentile scores relative to all X-ray entries and entries of similar resolution. The OWAB column contains the minimum, median, 95<sup>th</sup> percentile and maximum values of the occupancy-weighted average B-factor per residue. The column labelled ‘Q< 0.9’ lists the number of (and percentage) of residues with an average occupancy less than 0.9.

Mol	Chain	Analysed	<RSRZ>	#RSRZ>2	OWAB(Å <sup>2</sup> )	Q<0.9
1	A	305/314 (97%)	-0.01	6 (1%) 68 71	14, 32, 67, 86	0
1	B	305/314 (97%)	-0.19	3 (0%) 84 86	13, 28, 55, 82	0
All	All	610/628 (97%)	-0.10	9 (1%) 76 79	13, 30, 64, 86	0

All (9) RSRZ outliers are listed below:

Mol	Chain	Res	Type	RSRZ
1	A	100	PHE	3.7
1	A	61	GLY	3.2
1	A	147	PHE	3.0
1	A	99	LYS	2.9
1	B	61	GLY	2.8
1	A	60	THR	2.7
1	B	235	ASN	2.5
1	B	216	PRO	2.3
1	A	64	THR	2.0

### 6.2 Non-standard residues in protein, DNA, RNA chains

In the following table, the Atoms column lists the number of modelled atoms in the group and the number defined in the chemical component dictionary. LLDF column lists the quality of electron density of the group with respect to its neighbouring residues in protein, DNA or RNA chains. The B-factors column lists the minimum, median, 95<sup>th</sup> percentile and maximum values of B factors of atoms in the group. The column labelled ‘Q< 0.9’ lists the number of atoms with occupancy less than 0.9.

Mol	Type	Chain	Res	Atoms	RSCC	RSR	LLDF	B-factors(Å <sup>2</sup> )	Q<0.9
1	LLP	A	46	24/25	0.97	0.09	-	25,32,36,41	0
1	LLP	B	46	24/25	0.98	0.09	-	16,26,34,36	0



### 6.3 Carbohydrates [i](#)

There are no carbohydrates in this entry.

### 6.4 Ligands [i](#)

In the following table, the Atoms column lists the number of modelled atoms in the group and the number defined in the chemical component dictionary. LLDF column lists the quality of electron density of the group with respect to its neighbouring residues in protein, DNA or RNA chains. The B-factors column lists the minimum, median, 95<sup>th</sup> percentile and maximum values of B factors of atoms in the group. The column labelled 'Q< 0.9' lists the number of atoms with occupancy less than 0.9.

Mol	Type	Chain	Res	Atoms	RSCC	RSR	LLDF	B-factors( $\text{\AA}^2$ )	Q<0.9
2	OAS	B	401	10/10	0.80	0.36	16.38	43,62,70,74	0

### 6.5 Other polymers [i](#)

There are no such residues in this entry.