



# Full wwPDB X-ray Structure Validation Report ⓘ

Feb 1, 2016 – 02:30 AM GMT

PDB ID : 2HFE  
Title : Rb<sup>+</sup> complex of a K channel with an amide to ester substitution in the selectivity filter  
Authors : Valiyaveetil, F.I.; MacKinnon, R.; Muir, T.W.  
Deposited on : 2006-06-23  
Resolution : 2.25 Å(reported)

This is a Full wwPDB X-ray Structure Validation Report for a publicly released PDB entry.  
We welcome your comments at [validation@mail.wwpdb.org](mailto:validation@mail.wwpdb.org)  
A user guide is available at  
<http://wwpdb.org/validation/2016/XrayValidationReportHelp>  
with specific help available everywhere you see the ⓘ symbol.

---

The following versions of software and data (see [references ⓘ](#)) were used in the production of this report:

MolProbity : 4.02b-467  
Mogul : 1.7 (RC4), CSD as536be (2015)  
Xtriage (Phenix) : 1.9-1692  
EDS : rb-20026688  
Percentile statistics : 20151230.v01 (using entries in the PDB archive December 30th 2015)  
Refmac : 5.8.0135  
CCP4 : 6.5.0  
Ideal geometry (proteins) : Engh & Huber (2001)  
Ideal geometry (DNA, RNA) : Parkinson et al. (1996)  
Validation Pipeline (wwPDB-VP) : trunk26865

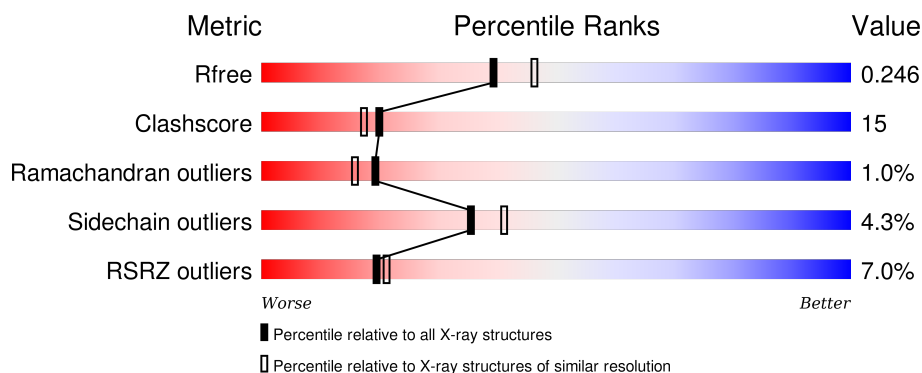
# 1 Overall quality at a glance

The following experimental techniques were used to determine the structure:

## *X-RAY DIFFRACTION*

The reported resolution of this entry is 2.25 Å.

Percentile scores (ranging between 0-100) for global validation metrics of the entry are shown in the following graphic. The table shows the number of entries on which the scores are based.



Metric	Whole archive (#Entries)	Similar resolution (#Entries, resolution range(Å))
$R_{free}$	91344	1640 (2.28-2.24)
Clashscore	102246	1095 (2.26-2.26)
Ramachandran outliers	100387	1063 (2.26-2.26)
Sidechain outliers	100360	1063 (2.26-2.26)
RSRZ outliers	91569	1647 (2.28-2.24)

The table below summarises the geometric issues observed across the polymeric chains and their fit to the electron density. The red, orange, yellow and green segments on the lower bar indicate the fraction of residues that contain outliers for  $\geq 3$ , 2, 1 and 0 types of geometric quality criteria. A grey segment represents the fraction of residues that are not modelled. The numeric value for each fraction is indicated below the corresponding segment, with a dot representing fractions  $\leq 5\%$ . The upper red bar (where present) indicates the fraction of residues that have poor fit to the electron density. The numeric value is given above the bar.

Mol	Chain	Length	Quality of chain
1	A	219	<div> <div>8%</div> <div>72%</div> <div>24%</div> <div>.</div> </div>
2	B	211	<div> <div>9%</div> <div>66%</div> <div>32%</div> <div>.</div> </div>
3	C	57	<div> <div>4%</div> <div>86%</div> <div>14%</div> </div>
4	D	43	<div> <div>77%</div> <div>23%</div> </div>

The following table lists non-polymeric compounds, carbohydrate monomers and non-standard

residues in protein, DNA, RNA chains that are outliers for geometric or electron-density-fit criteria:

Mol	Type	Chain	Res	Chirality	Geometry	Clashes	Electron density
7	B3H	D	301	-	-	-	X

## 2 Entry composition

There are 8 unique types of molecules in this entry. The entry contains 4172 atoms, of which 0 are hydrogens and 0 are deuteriums.

In the tables below, the ZeroOcc column contains the number of atoms modelled with zero occupancy, the AltConf column contains the number of residues with at least one atom in alternate conformation and the Trace column contains the number of residues modelled with at most 2 atoms.

- Molecule 1 is a protein called FAB Heavy Chain.

Mol	Chain	Residues	Atoms					ZeroOcc	AltConf	Trace
1	A	219	Total	C	N	O	S	0	0	0
			1648	1042	275	325	6			

- Molecule 2 is a protein called FAB Light Chain.

Mol	Chain	Residues	Atoms					ZeroOcc	AltConf	Trace
2	B	211	Total	C	N	O	S	0	0	0
			1641	1019	281	336	5			

- Molecule 3 is a protein called KcsA channel.

Mol	Chain	Residues	Atoms					ZeroOcc	AltConf	Trace
3	C	57	Total	C	N	O	S	0	0	0
			423	278	72	72	1			

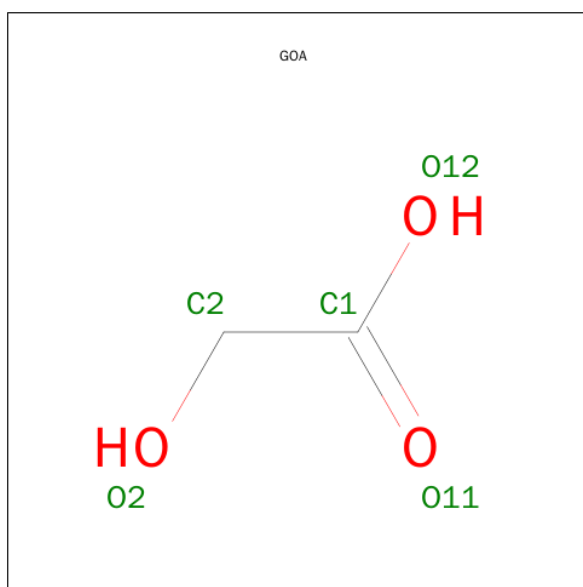
- Molecule 4 is a protein called KcsA channel.

Mol	Chain	Residues	Atoms					ZeroOcc	AltConf	Trace
4	D	43	Total	C	N	O	S	0	0	0
			330	217	55	57	1			

- Molecule 5 is RUBIDIUM ION (three-letter code: RB) (formula: Rb).

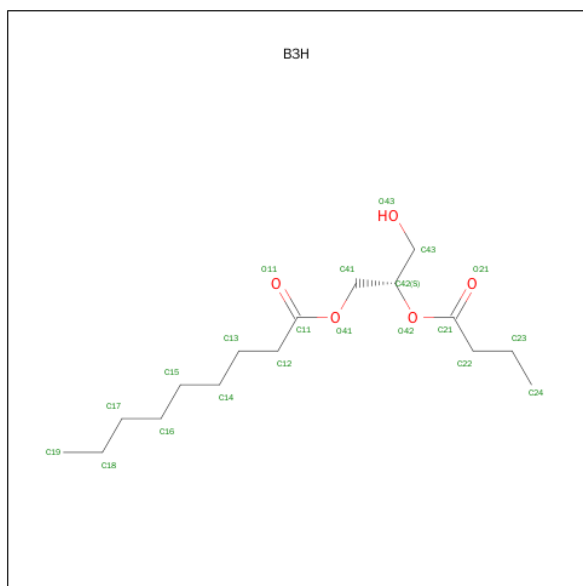
Mol	Chain	Residues	Atoms		ZeroOcc	AltConf
5	D	1	Total	Rb	0	0
			1	1		
5	C	4	Total	Rb	0	0
			4	4		

- Molecule 6 is GLYCOLIC ACID (three-letter code: GOA) (formula: C<sub>2</sub>H<sub>4</sub>O<sub>3</sub>).



Mol	Chain	Residues	Atoms			ZeroOcc	AltConf
6	C	1	Total	C	O	0	0
			4	2	2		

- Molecule 7 is (2S)-2-(BUTYRYLOXY)-3-HYDROXYPROPYL NONANOATE (three-letter code: B3H) (formula:  $C_{16}H_{30}O_5$ ).



Mol	Chain	Residues	Atoms			ZeroOcc	AltConf
7	D	1	Total	C	O	0	0
			21	16	5		

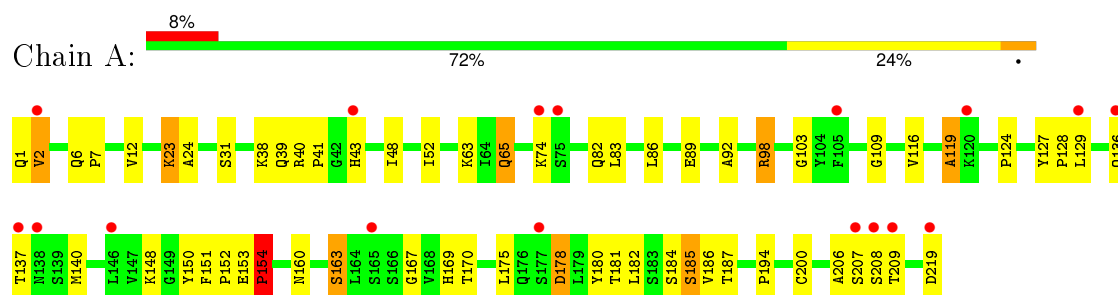
- Molecule 8 is water.

Mol	Chain	Residues	Atoms		ZeroOcc	AltConf
8	A	30	Total 30	O 30	0	0
8	B	53	Total 53	O 53	0	0
8	C	12	Total 12	O 12	0	0
8	D	5	Total 5	O 5	0	0

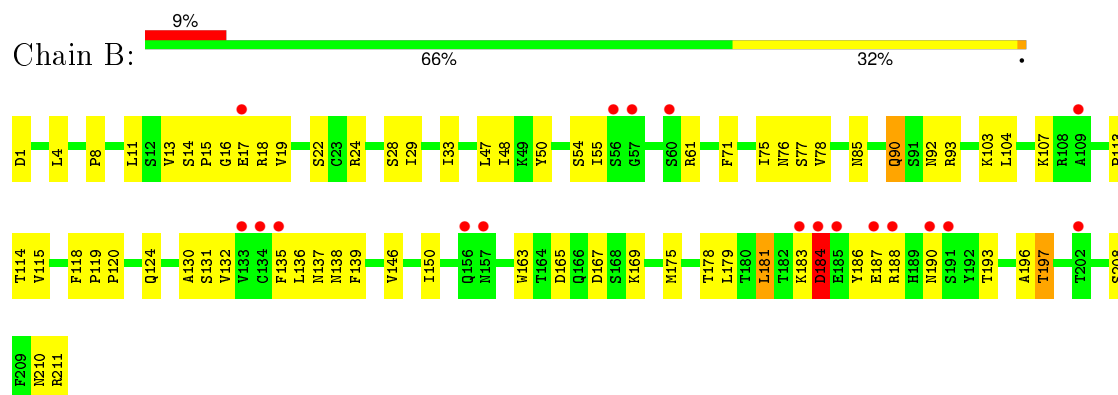
### 3 Residue-property plots

These plots are drawn for all protein, RNA and DNA chains in the entry. The first graphic for a chain summarises the proportions of errors displayed in the second graphic. The second graphic shows the sequence view annotated by issues in geometry and electron density. Residues are color-coded according to the number of geometric quality criteria for which they contain at least one outlier: green = 0, yellow = 1, orange = 2 and red = 3 or more. A red dot above a residue indicates a poor fit to the electron density ( $RSRZ > 2$ ). Stretches of 2 or more consecutive residues without any outlier are shown as a green connector. Residues present in the sample, but not in the model, are shown in grey.

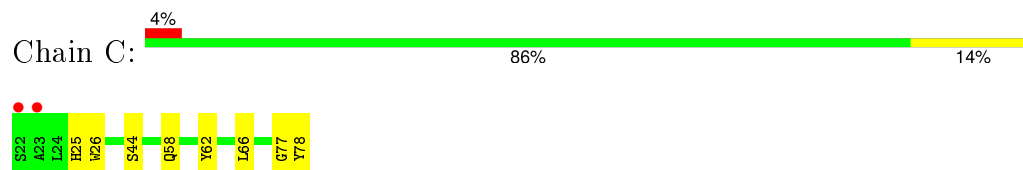
#### • Molecule 1: FAB Heavy Chain



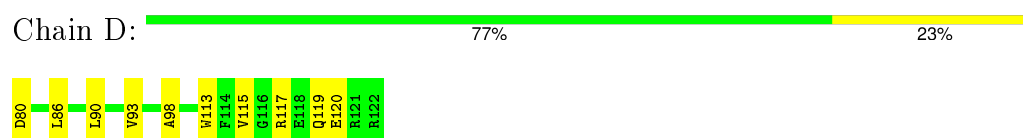
#### • Molecule 2: FAB Light Chain



#### • Molecule 3: KcsA channel



#### • Molecule 4: KcsA channel



## 4 Data and refinement statistics

Property	Value	Source
Space group	I 4	Depositor
Cell constants a, b, c, $\alpha$ , $\beta$ , $\gamma$	156.14Å 156.14Å 75.79Å 90.00° 90.00° 90.00°	Depositor
Resolution (Å)	26.78 – 2.25 26.78 – 2.25	Depositor EDS
% Data completeness (in resolution range)	98.9 (26.78-2.25) 99.0 (26.78-2.25)	Depositor EDS
$R_{merge}$	(Not available)	Depositor
$R_{sym}$	0.08	Depositor
$\langle I/\sigma(I) \rangle$ <sup>1</sup>	3.43 (at 2.24Å)	Xtriage
Refinement program	CNS	Depositor
R, $R_{free}$	0.232 , 0.251 0.229 , 0.246	Depositor DCC
$R_{free}$ test set	2155 reflections (5.28%)	DCC
Wilson B-factor (Å <sup>2</sup> )	39.8	Xtriage
Anisotropy	0.425	Xtriage
Bulk solvent $k_{sol}$ (e/Å <sup>3</sup> ), $B_{sol}$ (Å <sup>2</sup> )	0.39 , 60.7	EDS
Estimated twinning fraction	0.020 for -k,-h,-l	Xtriage
L-test for twinning <sup>2</sup>	$\langle  L  \rangle = 0.50$ , $\langle L^2 \rangle = 0.34$	Xtriage
Outliers	1 of 42966 reflections (0.002%)	Xtriage
$F_o, F_c$ correlation	0.94	EDS
Total number of atoms	4172	wwPDB-VP
Average B, all atoms (Å <sup>2</sup> )	52.0	wwPDB-VP

Xtriage's analysis on translational NCS is as follows: *The largest off-origin peak in the Patterson function is 3.84% of the height of the origin peak. No significant pseudotranslation is detected.*

<sup>1</sup>Intensities estimated from amplitudes.

<sup>2</sup>Theoretical values of  $\langle |L| \rangle$ ,  $\langle L^2 \rangle$  for acentric reflections are 0.5, 0.375 respectively for untwinned datasets, and 0.333, 0.2 for perfectly twinned datasets.



## 5 Model quality

### 5.1 Standard geometry

Bond lengths and bond angles in the following residue types are not validated in this section: GOA, B3H, RB

The Z score for a bond length (or angle) is the number of standard deviations the observed value is removed from the expected value. A bond length (or angle) with  $|Z| > 5$  is considered an outlier worth inspection. RMSZ is the root-mean-square of all Z scores of the bond lengths (or angles).

Mol	Chain	Bond lengths		Bond angles	
		RMSZ	$\# Z  > 5$	RMSZ	$\# Z  > 5$
1	A	0.62	0/1692	0.82	3/2312 (0.1%)
2	B	0.64	0/1678	0.77	0/2276
3	C	0.91	0/434	0.85	0/598
4	D	0.83	1/337 (0.3%)	0.77	0/460
All	All	0.68	1/4141 (0.0%)	0.80	3/5646 (0.1%)

Chiral center outliers are detected by calculating the chiral volume of a chiral center and verifying if the center is modelled as a planar moiety or with the opposite hand. A planarity outlier is detected by checking planarity of atoms in a peptide group, atoms in a mainchain group or atoms of a sidechain that are expected to be planar.

Mol	Chain	#Chirality outliers	#Planarity outliers
2	B	0	1

All (1) bond length outliers are listed below:

Mol	Chain	Res	Type	Atoms	Z	Observed(Å)	Ideal(Å)
4	D	98	ALA	CA-CB	5.42	1.63	1.52

All (3) bond angle outliers are listed below:

Mol	Chain	Res	Type	Atoms	Z	Observed(°)	Ideal(°)
1	A	98	ARG	NE-CZ-NH1	8.23	124.41	120.30
1	A	103	GLY	N-CA-C	6.31	128.87	113.10
1	A	98	ARG	NE-CZ-NH2	-5.85	117.38	120.30

There are no chirality outliers.

All (1) planarity outliers are listed below:

Mol	Chain	Res	Type	Group
2	B	50	TYR	Sidechain

## 5.2 Too-close contacts ⓘ

In the following table, the Non-H and H(model) columns list the number of non-hydrogen atoms and hydrogen atoms in the chain respectively. The H(added) column lists the number of hydrogen atoms added and optimized by MolProbity. The Clashes column lists the number of clashes within the asymmetric unit, whereas Symm-Clashes lists symmetry related clashes.

Mol	Chain	Non-H	H(model)	H(added)	Clashes	Symm-Clashes
1	A	1648	0	1616	47	0
2	B	1641	0	1570	62	0
3	C	423	0	431	7	0
4	D	330	0	335	11	0
5	C	4	0	0	0	0
5	D	1	0	0	0	0
6	C	4	0	2	0	0
7	D	21	0	30	7	0
8	A	30	0	0	5	0
8	B	53	0	0	15	0
8	C	12	0	0	1	0
8	D	5	0	0	0	0
All	All	4172	0	3984	119	0

The all-atom clashscore is defined as the number of clashes found per 1000 atoms (including hydrogen atoms). The all-atom clashscore for this structure is 15.

All (119) close contacts within the same asymmetric unit are listed below, sorted by their clash magnitude.

Atom-1	Atom-2	Interatomic distance (Å)	Clash overlap (Å)
2:B:29:ILE:N	8:B:256:HOH:O	1.82	1.12
2:B:1:ASP:HB2	8:B:262:HOH:O	1.66	0.96
3:C:25:HIS:ND1	8:C:210:HOH:O	2.00	0.94
2:B:169:LYS:HG3	8:B:258:HOH:O	1.68	0.93
1:A:98:ARG:HD2	8:A:244:HOH:O	1.67	0.92
4:D:90:LEU:HD23	7:D:301:B3H:H172	1.52	0.91
2:B:61:ARG:HG3	2:B:76:ASN:O	1.84	0.78
4:D:90:LEU:CD2	7:D:301:B3H:H172	2.12	0.78
2:B:28:SER:HA	8:B:256:HOH:O	1.83	0.77
2:B:29:ILE:HG12	8:B:256:HOH:O	1.85	0.77
4:D:115:VAL:O	4:D:119:GLN:HG2	1.84	0.77

*Continued on next page...*

*Continued from previous page...*

Atom-1	Atom-2	Interatomic distance (Å)	Clash overlap (Å)
1:A:65:GLN:H	1:A:65:GLN:NE2	1.83	0.75
1:A:160:ASN:O	1:A:163:SER:HB3	1.89	0.72
2:B:78:VAL:HG21	2:B:104:LEU:HD21	1.72	0.72
1:A:1:GLN:N	1:A:1:GLN:OE1	2.23	0.72
2:B:13:VAL:CG2	2:B:17:GLU:HB3	2.21	0.71
1:A:153:GLU:OE1	1:A:154:PRO:HA	1.89	0.71
2:B:16:GLY:O	2:B:77:SER:HA	1.91	0.70
1:A:169:HIS:HE1	2:B:138:ASN:HD21	1.38	0.70
2:B:183:LYS:O	2:B:187:GLU:HG2	1.91	0.70
1:A:6:GLN:HE21	1:A:109:GLY:HA3	1.55	0.70
4:D:86:LEU:CD1	7:D:301:B3H:H132	2.22	0.69
2:B:90:GLN:HE22	2:B:93:ARG:H	1.41	0.68
2:B:178:THR:HG23	8:B:259:HOH:O	1.94	0.67
2:B:92:ASN:HD21	3:C:58:GLN:HE21	1.41	0.67
4:D:86:LEU:HD12	7:D:301:B3H:H132	1.75	0.67
2:B:197:THR:OG1	8:B:257:HOH:O	2.12	0.66
2:B:28:SER:CA	8:B:256:HOH:O	2.41	0.66
1:A:169:HIS:HE1	2:B:138:ASN:ND2	1.95	0.64
4:D:93:VAL:HG21	7:D:301:B3H:H192	1.80	0.64
2:B:136:LEU:HD11	2:B:196:ALA:HB2	1.79	0.63
1:A:148:LYS:HB3	1:A:181:THR:HG23	1.81	0.63
4:D:90:LEU:HD23	7:D:301:B3H:C17	2.26	0.62
2:B:19:VAL:HG12	2:B:75:ILE:HB	1.81	0.61
2:B:28:SER:C	8:B:256:HOH:O	2.27	0.61
1:A:124:PRO:HB3	1:A:150:TYR:HB3	1.83	0.61
1:A:207:SER:O	1:A:209:THR:HG23	2.00	0.61
2:B:115:VAL:HG22	2:B:136:LEU:HD13	1.82	0.60
2:B:90:GLN:NE2	2:B:92:ASN:H	2.00	0.60
1:A:39:GLN:O	1:A:92:ALA:HB1	2.02	0.60
2:B:132:VAL:N	8:B:259:HOH:O	2.34	0.59
2:B:190:ASN:O	2:B:210:ASN:HA	2.03	0.58
2:B:113:PRO:HB3	2:B:139:PHE:HB3	1.85	0.57
2:B:1:ASP:HB3	8:B:248:HOH:O	2.05	0.56
1:A:169:HIS:CE1	2:B:138:ASN:HD21	2.21	0.56
2:B:137:ASN:HB3	2:B:138:ASN:HD22	1.72	0.55
2:B:211:ARG:O	2:B:211:ARG:HG3	2.06	0.55
1:A:219:ASP:OD1	1:A:219:ASP:OXT	2.25	0.54
1:A:185:SER:HB2	2:B:135:PHE:CE2	2.42	0.54
1:A:12:VAL:O	1:A:116:VAL:HA	2.06	0.54
2:B:184:ASP:O	2:B:187:GLU:N	2.35	0.53
1:A:182:LEU:HD12	1:A:182:LEU:C	2.29	0.53

*Continued on next page...*

*Continued from previous page...*

Atom-1	Atom-2	Interatomic distance (Å)	Clash overlap (Å)
1:A:38:LYS:HB2	1:A:48:ILE:HD11	1.89	0.52
1:A:63:LYS:HG3	8:A:231:HOH:O	2.08	0.52
2:B:132:VAL:C	8:B:259:HOH:O	2.46	0.52
1:A:74:LYS:HG3	8:A:238:HOH:O	2.08	0.52
2:B:13:VAL:HG22	2:B:14:SER:N	2.24	0.51
2:B:120:PRO:HG3	2:B:130:ALA:HB1	1.92	0.51
4:D:113:TRP:HE1	4:D:117:ARG:NH1	2.08	0.51
2:B:8:PRO:HG2	2:B:11:LEU:HD13	1.93	0.51
2:B:90:GLN:NE2	2:B:92:ASN:N	2.60	0.50
2:B:115:VAL:HG22	2:B:136:LEU:CD1	2.42	0.50
4:D:86:LEU:HD13	7:D:301:B3H:H132	1.93	0.50
1:A:43:HIS:CD2	1:A:43:HIS:N	2.78	0.49
1:A:167:GLY:O	1:A:186:VAL:HA	2.12	0.49
2:B:28:SER:OG	8:B:237:HOH:O	2.20	0.49
1:A:40:ARG:HB3	1:A:41:PRO:HD2	1.93	0.49
3:C:77:GLY:O	3:C:78:TYR:C	2.50	0.49
1:A:83:LEU:HB3	1:A:86:LEU:HD21	1.95	0.49
3:C:44:SER:OG	3:C:66:LEU:HA	2.12	0.48
1:A:65:GLN:H	1:A:65:GLN:CD	2.12	0.48
2:B:15:PRO:HD3	2:B:107:LYS:O	2.13	0.48
2:B:76:ASN:O	2:B:77:SER:HB3	2.14	0.48
2:B:114:THR:HG22	8:B:250:HOH:O	2.13	0.48
1:A:1:GLN:CD	1:A:1:GLN:N	2.68	0.47
1:A:140:MET:CE	1:A:187:THR:HG22	2.44	0.47
2:B:146:VAL:O	2:B:146:VAL:HG13	2.15	0.47
1:A:152:PRO:HD2	1:A:206:ALA:CB	2.45	0.47
2:B:163:TRP:CD1	2:B:175:MET:HG3	2.50	0.47
1:A:170:THR:HA	1:A:184:SER:HA	1.97	0.46
1:A:140:MET:HE2	1:A:187:THR:HG22	1.98	0.46
1:A:52:ILE:O	1:A:52:ILE:HG23	2.15	0.46
1:A:31:SER:HB2	3:C:62:TYR:CE1	2.52	0.45
1:A:119:ALA:HB3	1:A:151:PHE:CE2	2.51	0.45
1:A:178:ASP:OD2	1:A:178:ASP:N	2.49	0.45
2:B:187:GLU:HA	2:B:211:ARG:NH2	2.31	0.45
1:A:152:PRO:HD2	1:A:206:ALA:HB1	1.99	0.45
2:B:187:GLU:HA	2:B:211:ARG:CZ	2.47	0.45
2:B:187:GLU:O	2:B:211:ARG:NH2	2.40	0.44
1:A:65:GLN:H	1:A:65:GLN:HE21	1.63	0.44
2:B:92:ASN:ND2	3:C:58:GLN:HE21	2.12	0.44
1:A:7:PRO:HD3	8:A:229:HOH:O	2.16	0.44
1:A:1:GLN:O	1:A:2:VAL:C	2.56	0.44

*Continued on next page...*

*Continued from previous page...*

Atom-1	Atom-2	Interatomic distance (Å)	Clash overlap (Å)
1:A:127:TYR:CE2	2:B:124:GLN:HG3	2.53	0.44
2:B:167:ASP:OD2	2:B:169:LYS:HB2	2.18	0.44
2:B:13:VAL:CG2	2:B:14:SER:N	2.81	0.44
1:A:23:LYS:HE3	1:A:24:ALA:N	2.32	0.44
4:D:80:ASP:N	4:D:80:ASP:OD1	2.50	0.44
2:B:181:LEU:HD12	2:B:186:TYR:HB2	1.99	0.44
2:B:54:SER:O	2:B:55:ILE:HD13	2.17	0.43
2:B:150:ILE:HD11	2:B:179:LEU:HD21	2.00	0.43
2:B:169:LYS:CG	8:B:258:HOH:O	2.46	0.43
2:B:124:GLN:HE22	2:B:131:SER:CB	2.32	0.42
2:B:90:GLN:HE21	2:B:92:ASN:H	1.64	0.42
1:A:98:ARG:CD	8:A:244:HOH:O	2.46	0.42
1:A:175:LEU:HB2	1:A:180:TYR:CE2	2.55	0.42
1:A:128:PRO:O	1:A:129:LEU:HD23	2.20	0.42
2:B:17:GLU:HG2	2:B:18:ARG:H	1.85	0.41
2:B:85:ASN:HD22	2:B:103:LYS:HA	1.84	0.41
1:A:136:GLN:O	1:A:136:GLN:HG2	2.21	0.41
1:A:140:MET:HE3	1:A:140:MET:HB3	1.81	0.41
2:B:47:LEU:C	2:B:48:ILE:HG12	2.40	0.41
1:A:40:ARG:HB3	1:A:41:PRO:CD	2.51	0.41
2:B:33:ILE:HG21	2:B:71:PHE:CD2	2.56	0.41
3:C:26:TRP:HA	3:C:26:TRP:CE3	2.54	0.41
2:B:193:THR:HG23	2:B:208:SER:OG	2.22	0.40
4:D:117:ARG:O	4:D:120:GLU:HB3	2.22	0.40
1:A:40:ARG:NH2	1:A:89:GLU:O	2.54	0.40
2:B:118:PHE:HA	2:B:119:PRO:HD3	1.87	0.40

There are no symmetry-related clashes.

## 5.3 Torsion angles [i](#)

### 5.3.1 Protein backbone [i](#)

In the following table, the Percentiles column shows the percent Ramachandran outliers of the chain as a percentile score with respect to all X-ray entries followed by that with respect to entries of similar resolution.

The Analysed column shows the number of residues for which the backbone conformation was analysed, and the total number of residues.

Mol	Chain	Analysed	Favoured	Allowed	Outliers	Percentiles	
1	A	217/219 (99%)	206 (95%)	8 (4%)	3 (1%)	14	9
2	B	209/211 (99%)	195 (93%)	12 (6%)	2 (1%)	19	16
3	C	55/57 (96%)	55 (100%)	0	0	100	100
4	D	41/43 (95%)	40 (98%)	1 (2%)	0	100	100
All	All	522/530 (98%)	496 (95%)	21 (4%)	5 (1%)	19	16

All (5) Ramachandran outliers are listed below:

Mol	Chain	Res	Type
1	A	119	ALA
2	B	184	ASP
2	B	188	ARG
1	A	2	VAL
1	A	154	PRO

### 5.3.2 Protein sidechains ⓘ

In the following table, the Percentiles column shows the percent sidechain outliers of the chain as a percentile score with respect to all X-ray entries followed by that with respect to entries of similar resolution.

The Analysed column shows the number of residues for which the sidechain conformation was analysed, and the total number of residues.

Mol	Chain	Analysed	Rotameric	Outliers	Percentiles	
1	A	185/185 (100%)	174 (94%)	11 (6%)	24	24
2	B	189/189 (100%)	181 (96%)	8 (4%)	36	42
3	C	39/39 (100%)	39 (100%)	0	100	100
4	D	33/34 (97%)	33 (100%)	0	100	100
All	All	446/447 (100%)	427 (96%)	19 (4%)	35	41

All (19) residues with a non-rotameric sidechain are listed below:

Mol	Chain	Res	Type
1	A	23	LYS
1	A	65	GLN
1	A	82	GLN
1	A	137	THR
1	A	154	PRO
1	A	163	SER

*Continued on next page...*

*Continued from previous page...*

Mol	Chain	Res	Type
1	A	178	ASP
1	A	185	SER
1	A	194	PRO
1	A	200	CYS
1	A	208	SER
2	B	4	LEU
2	B	22	SER
2	B	24	ARG
2	B	90	GLN
2	B	165	ASP
2	B	181	LEU
2	B	184	ASP
2	B	197	THR

Some sidechains can be flipped to improve hydrogen bonding and reduce clashes. All (12) such sidechains are listed below:

Mol	Chain	Res	Type
1	A	5	GLN
1	A	6	GLN
1	A	43	HIS
1	A	65	GLN
1	A	82	GLN
1	A	169	HIS
2	B	85	ASN
2	B	90	GLN
2	B	92	ASN
2	B	124	GLN
2	B	137	ASN
2	B	138	ASN

### 5.3.3 RNA ⓘ

There are no RNA molecules in this entry.

## 5.4 Non-standard residues in protein, DNA, RNA chains ⓘ

There are no non-standard protein/DNA/RNA residues in this entry.

## 5.5 Carbohydrates [i](#)

There are no carbohydrates in this entry.

## 5.6 Ligand geometry [i](#)

Of 7 ligands modelled in this entry, 5 are monoatomic - leaving 2 for Mogul analysis.

In the following table, the Counts columns list the number of bonds (or angles) for which Mogul statistics could be retrieved, the number of bonds (or angles) that are observed in the model and the number of bonds (or angles) that are defined in the chemical component dictionary. The Link column lists molecule types, if any, to which the group is linked. The Z score for a bond length (or angle) is the number of standard deviations the observed value is removed from the expected value. A bond length (or angle) with  $|Z| > 2$  is considered an outlier worth inspection. RMSZ is the root-mean-square of all Z scores of the bond lengths (or angles).

Mol	Type	Chain	Res	Link	Bond lengths			Bond angles		
					Counts	RMSZ	$\# Z  > 2$	Counts	RMSZ	$\# Z  > 2$
6	GOA	C	79	3,4	3,3,4	1.01	0	2,2,4	0.81	0
7	B3H	D	301	-	20,20,20	1.36	3 (15%)	22,22,22	1.21	1 (4%)

In the following table, the Chirals column lists the number of chiral outliers, the number of chiral centers analysed, the number of these observed in the model and the number defined in the chemical component dictionary. Similar counts are reported in the Torsion and Rings columns. '-' means no outliers of that kind were identified.

Mol	Type	Chain	Res	Link	Chirals	Torsions	Rings
6	GOA	C	79	3,4	-	0/0/1/2	0/0/0/0
7	B3H	D	301	-	-	0/22/22/22	0/0/0/0

All (3) bond length outliers are listed below:

Mol	Chain	Res	Type	Atoms	Z	Observed(Å)	Ideal(Å)
7	D	301	B3H	O41-C41	-2.37	1.39	1.45
7	D	301	B3H	O42-C21	3.35	1.44	1.34
7	D	301	B3H	O41-C11	3.72	1.44	1.33

All (1) bond angle outliers are listed below:

Mol	Chain	Res	Type	Atoms	Z	Observed(°)	Ideal(°)
7	D	301	B3H	O42-C21-C22	3.66	119.48	111.53

There are no chirality outliers.

There are no torsion outliers.



There are no ring outliers.

1 monomer is involved in 7 short contacts:

Mol	Chain	Res	Type	Clashes	Symm-Clashes
7	D	301	B3H	7	0

## 5.7 Other polymers [i](#)

There are no such residues in this entry.

## 5.8 Polymer linkage issues [i](#)

There are no chain breaks in this entry.

## 6 Fit of model and data

### 6.1 Protein, DNA and RNA chains

In the following table, the column labelled ‘#RSRZ> 2’ contains the number (and percentage) of RSRZ outliers, followed by percent RSRZ outliers for the chain as percentile scores relative to all X-ray entries and entries of similar resolution. The OWAB column contains the minimum, median, 95<sup>th</sup> percentile and maximum values of the occupancy-weighted average B-factor per residue. The column labelled ‘Q< 0.9’ lists the number of (and percentage) of residues with an average occupancy less than 0.9.

Mol	Chain	Analysed	<RSRZ>	#RSRZ>2	OWAB(Å <sup>2</sup> )	Q<0.9
1	A	219/219 (100%)	0.57	17 (7%) 16 17	28, 58, 75, 86	0
2	B	211/211 (100%)	0.50	18 (8%) 13 14	23, 55, 80, 88	0
3	C	57/57 (100%)	0.26	2 (3%) 48 52	21, 30, 63, 71	0
4	D	43/43 (100%)	0.18	0 100 100	24, 37, 70, 78	0
All	All	530/530 (100%)	0.48	37 (6%) 19 21	21, 54, 77, 88	0

All (37) RSRZ outliers are listed below:

Mol	Chain	Res	Type	RSRZ
1	A	209	THR	5.1
2	B	190	ASN	4.6
2	B	202	THR	4.3
3	C	22	SER	4.0
1	A	219	ASP	3.7
2	B	188	ARG	3.7
2	B	157	ASN	3.5
1	A	2	VAL	3.3
1	A	136	GLN	3.3
2	B	183	LYS	3.2
1	A	75	SER	3.2
2	B	133	VAL	3.2
1	A	208	SER	3.1
1	A	105	PHE	3.0
1	A	137	THR	2.9
1	A	43	HIS	2.8
1	A	138	ASN	2.8
1	A	74	LYS	2.7
2	B	17	GLU	2.7
1	A	120	LYS	2.7
2	B	109	ALA	2.7

*Continued on next page...*

*Continued from previous page...*

Mol	Chain	Res	Type	RSRZ
3	C	23	ALA	2.7
2	B	184	ASP	2.6
1	A	146	LEU	2.6
2	B	56	SER	2.5
2	B	135	PHE	2.5
2	B	191	SER	2.5
2	B	57	GLY	2.4
2	B	185	GLU	2.4
2	B	134	CYS	2.4
1	A	207	SER	2.4
2	B	156	GLN	2.3
2	B	60	SER	2.2
1	A	177	SER	2.2
1	A	129	LEU	2.1
2	B	187	GLU	2.1
1	A	165	SER	2.0

## 6.2 Non-standard residues in protein, DNA, RNA chains [i](#)

There are no non-standard protein/DNA/RNA residues in this entry.

## 6.3 Carbohydrates [i](#)

There are no carbohydrates in this entry.

## 6.4 Ligands [i](#)

In the following table, the Atoms column lists the number of modelled atoms in the group and the number defined in the chemical component dictionary. LLDF column lists the quality of electron density of the group with respect to its neighbouring residues in protein, DNA or RNA chains. The B-factors column lists the minimum, median, 95<sup>th</sup> percentile and maximum values of B factors of atoms in the group. The column labelled 'Q< 0.9' lists the number of atoms with occupancy less than 0.9.

Mol	Type	Chain	Res	Atoms	RSCC	RSR	LLDF	B-factors(Å <sup>2</sup> )	Q<0.9
7	B3H	D	301	21/21	0.41	0.44	14.58	71,81,91,92	0
6	GOA	C	79	4/5	0.97	0.07	-2.89	34,36,36,38	0
5	RB	C	202	1/1	0.99	0.10	-	28,28,28,28	1
5	RB	C	201	1/1	0.93	0.05	-	55,55,55,55	1
5	RB	D	205	1/1	1.00	0.02	-	45,45,45,45	1

*Continued on next page...*

*Continued from previous page...*

Mol	Type	Chain	Res	Atoms	RSCC	RSR	LLDF	B-factors( $\text{\AA}^2$ )	Q<0.9
5	RB	C	203	1/1	0.99	0.12	-	29,29,29,29	1
5	RB	C	204	1/1	0.99	0.12	-	26,26,26,26	1

## 6.5 Other polymers [i](#)

There are no such residues in this entry.