



# Full wwPDB X-ray Structure Validation Report ⓘ

Feb 1, 2016 – 09:10 AM GMT

PDB ID : 3HHK  
Title : HCV NS5b polymerase complex with a substituted benzothiadizine  
Authors : Concha, N.O.; Singh, O.  
Deposited on : 2009-05-15  
Resolution : 1.70 Å(reported)

This is a Full wwPDB X-ray Structure Validation Report for a publicly released PDB entry.  
We welcome your comments at [validation@mail.wwpdb.org](mailto:validation@mail.wwpdb.org)  
A user guide is available at  
<http://wwpdb.org/validation/2016/XrayValidationReportHelp>  
with specific help available everywhere you see the ⓘ symbol.

---

The following versions of software and data (see [references ⓘ](#)) were used in the production of this report:

MolProbity : 4.02b-467  
Mogul : 1.7 (RC4), CSD as536be (2015)  
Xtriage (Phenix) : 1.9-1692  
EDS : rb-20026688  
Percentile statistics : 20151230.v01 (using entries in the PDB archive December 30th 2015)  
Refmac : 5.8.0135  
CCP4 : 6.5.0  
Ideal geometry (proteins) : Engh & Huber (2001)  
Ideal geometry (DNA, RNA) : Parkinson et al. (1996)  
Validation Pipeline (wwPDB-VP) : trunk26865

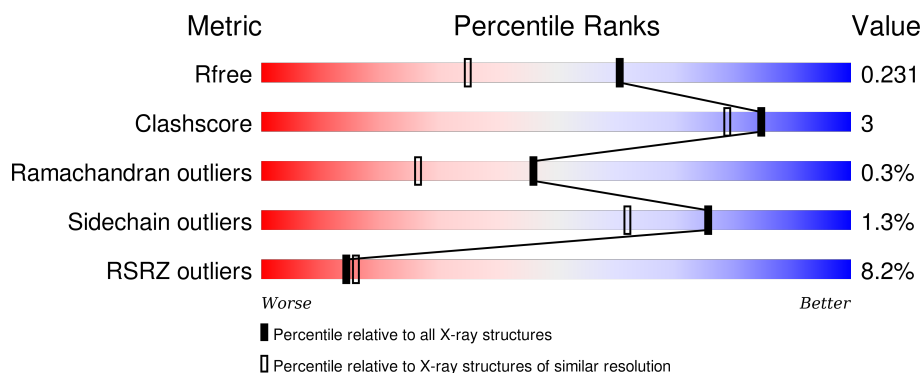
# 1 Overall quality at a glance

The following experimental techniques were used to determine the structure:

## *X-RAY DIFFRACTION*

The reported resolution of this entry is 1.70 Å.

Percentile scores (ranging between 0-100) for global validation metrics of the entry are shown in the following graphic. The table shows the number of entries on which the scores are based.



Metric	Whole archive (#Entries)	Similar resolution (#Entries, resolution range(Å))
$R_{free}$	91344	3190 (1.70-1.70)
Clashscore	102246	3585 (1.70-1.70)
Ramachandran outliers	100387	3527 (1.70-1.70)
Sidechain outliers	100360	3527 (1.70-1.70)
RSRZ outliers	91569	3200 (1.70-1.70)

The table below summarises the geometric issues observed across the polymeric chains and their fit to the electron density. The red, orange, yellow and green segments on the lower bar indicate the fraction of residues that contain outliers for  $\geq 3$ , 2, 1 and 0 types of geometric quality criteria. A grey segment represents the fraction of residues that are not modelled. The numeric value for each fraction is indicated below the corresponding segment, with a dot representing fractions  $\leq 5\%$ . The upper red bar (where present) indicates the fraction of residues that have poor fit to the electron density. The numeric value is given above the bar.

Mol	Chain	Length	Quality of chain
1	A	563	<div> <div>8%</div> <div>93%</div> <div>7%</div> </div>
1	B	563	<div> <div>8%</div> <div>92%</div> <div>7%</div> </div>

The following table lists non-polymeric compounds, carbohydrate monomers and non-standard residues in protein, DNA, RNA chains that are outliers for geometric or electron-density-fit criteria:

Mol	Type	Chain	Res	Chirality	Geometry	Clashes	Electron density
2	77Z	A	564	X	-	-	-
2	77Z	B	564	X	-	-	-

## 2 Entry composition [i](#)

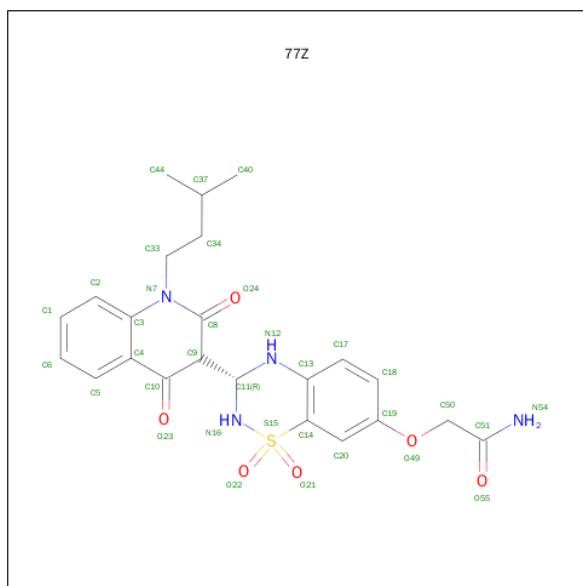
There are 3 unique types of molecules in this entry. The entry contains 9302 atoms, of which 0 are hydrogens and 0 are deuteriums.

In the tables below, the ZeroOcc column contains the number of atoms modelled with zero occupancy, the AltConf column contains the number of residues with at least one atom in alternate conformation and the Trace column contains the number of residues modelled with at most 2 atoms.

- Molecule 1 is a protein called HCV NS5 polymerase.

Mol	Chain	Residues	Atoms					ZeroOcc	AltConf	Trace
1	A	563	Total	C	N	O	S	26	5	0
			4383	2762	771	816	34			
1	B	563	Total	C	N	O	S	8	3	0
			4378	2760	771	814	33			

- Molecule 2 is 2-((3R)-3-[(3S)-1-(3-METHYLBUTYL)-2,4-DIOXO-1,2,3,4-TETRAHYDRO QUINOLIN-3-YL]-1,1-DIOXIDO-3,4-DIHYDRO-2H-1,2,4-BENZOTHIADIAZIN-7-YL} OX Y)ACETAMIDE (three-letter code: 77Z) (formula: C<sub>23</sub>H<sub>26</sub>N<sub>4</sub>O<sub>6</sub>S).

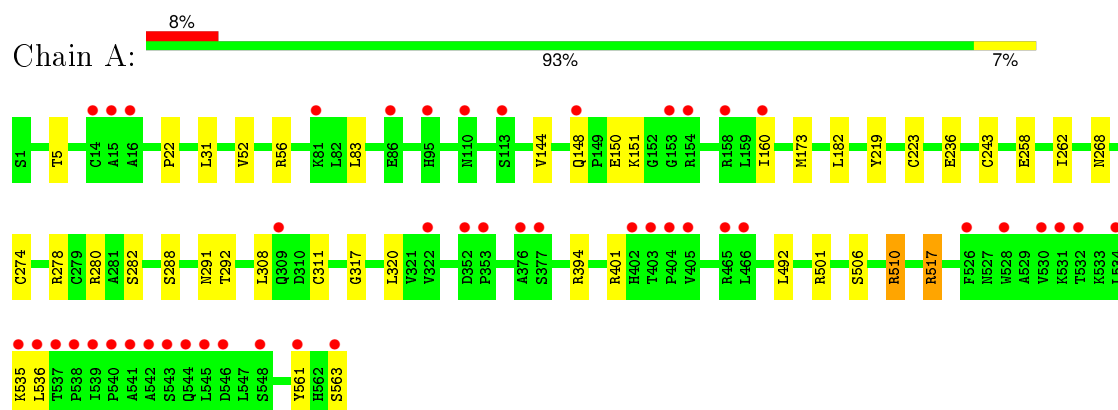


Mol	Chain	Residues	Atoms		ZeroOcc	AltConf
3	A	228	Total 228	O 228	0	0
3	B	245	Total 245	O 245	0	0

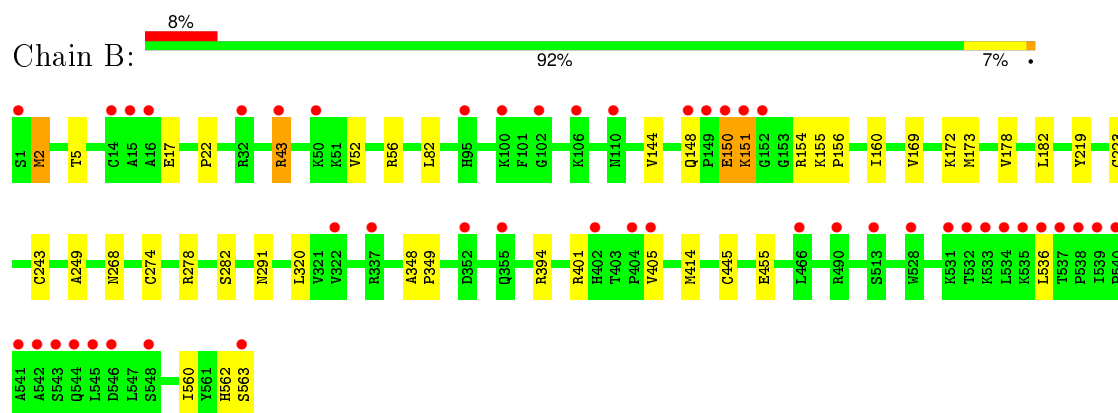
### 3 Residue-property plots

These plots are drawn for all protein, RNA and DNA chains in the entry. The first graphic for a chain summarises the proportions of errors displayed in the second graphic. The second graphic shows the sequence view annotated by issues in geometry and electron density. Residues are color-coded according to the number of geometric quality criteria for which they contain at least one outlier: green = 0, yellow = 1, orange = 2 and red = 3 or more. A red dot above a residue indicates a poor fit to the electron density (RSRZ > 2). Stretches of 2 or more consecutive residues without any outlier are shown as a green connector. Residues present in the sample, but not in the model, are shown in grey.

#### • Molecule 1: HCV NS5 polymerase



#### • Molecule 1: HCV NS5 polymerase



## 4 Data and refinement statistics

Property	Value	Source
Space group	P 21 21 21	Depositor
Cell constants a, b, c, $\alpha$ , $\beta$ , $\gamma$	85.74Å 107.44Å 126.81Å 90.00° 90.00° 90.00°	Depositor
Resolution (Å)	81.92 – 1.70 19.93 – 1.70	Depositor EDS
% Data completeness (in resolution range)	87.5 (81.92-1.70) 87.6 (19.93-1.70)	Depositor EDS
$R_{merge}$	0.07	Depositor
$R_{sym}$	0.07	Depositor
$\langle I/\sigma(I) \rangle$ <sup>1</sup>	3.80 (at 1.70Å)	Xtriage
Refinement program	REFMAC 5.2.0019	Depositor
R, $R_{free}$	0.229 , 0.250 0.228 , 0.231	Depositor DCC
$R_{free}$ test set	5700 reflections (5.32%)	DCC
Wilson B-factor (Å <sup>2</sup> )	15.4	Xtriage
Anisotropy	0.424	Xtriage
Bulk solvent $k_{sol}$ (e/Å <sup>3</sup> ), $B_{sol}$ (Å <sup>2</sup> )	0.41 , 45.9	EDS
Estimated twinning fraction	No twinning to report.	Xtriage
L-test for twinning <sup>2</sup>	$\langle  L  \rangle = 0.49$ , $\langle L^2 \rangle = 0.32$	Xtriage
Outliers	1 of 112766 reflections (0.001%)	Xtriage
$F_o, F_c$ correlation	0.94	EDS
Total number of atoms	9302	wwPDB-VP
Average B, all atoms (Å <sup>2</sup> )	16.0	wwPDB-VP

Xtriage's analysis on translational NCS is as follows: *The analyses of the Patterson function reveals a significant off-origin peak that is 45.67 % of the origin peak, indicating pseudo translational symmetry. The chance of finding a peak of this or larger height randomly in a structure without pseudo translational symmetry is equal to 1.2773e-04. The detected translational NCS is most likely also responsible for the elevated intensity ratio.*

<sup>1</sup>Intensities estimated from amplitudes.

<sup>2</sup>Theoretical values of  $\langle |L| \rangle$ ,  $\langle L^2 \rangle$  for acentric reflections are 0.5, 0.375 respectively for untwinned datasets, and 0.333, 0.2 for perfectly twinned datasets.

## 5 Model quality [i](#)

### 5.1 Standard geometry [i](#)

Bond lengths and bond angles in the following residue types are not validated in this section: 77Z

The Z score for a bond length (or angle) is the number of standard deviations the observed value is removed from the expected value. A bond length (or angle) with  $|Z| > 5$  is considered an outlier worth inspection. RMSZ is the root-mean-square of all Z scores of the bond lengths (or angles).

Mol	Chain	Bond lengths		Bond angles	
		RMSZ	$\# Z  > 5$	RMSZ	$\# Z  > 5$
1	A	0.32	0/4503	0.49	1/6109 (0.0%)
1	B	0.37	1/4489 (0.0%)	0.52	3/6091 (0.0%)
All	All	0.35	1/8992 (0.0%)	0.50	4/12200 (0.0%)

All (1) bond length outliers are listed below:

Mol	Chain	Res	Type	Atoms	Z	Observed(Å)	Ideal(Å)
1	B	150	GLU	CB-CG	13.24	1.77	1.52

All (4) bond angle outliers are listed below:

Mol	Chain	Res	Type	Atoms	Z	Observed(°)	Ideal(°)
1	B	151	LYS	CA-CB-CG	-10.11	91.16	113.40
1	B	150	GLU	CA-CB-CG	9.42	134.13	113.40
1	B	150	GLU	CB-CG-CD	8.03	135.88	114.20
1	A	148	GLN	CB-CG-CD	6.56	128.66	111.60

There are no chirality outliers.

There are no planarity outliers.

### 5.2 Too-close contacts [i](#)

In the following table, the Non-H and H(model) columns list the number of non-hydrogen atoms and hydrogen atoms in the chain respectively. The H(added) column lists the number of hydrogen atoms added and optimized by MolProbity. The Clashes column lists the number of clashes within the asymmetric unit, whereas Symm-Clashes lists symmetry related clashes.

Mol	Chain	Non-H	H(model)	H(added)	Clashes	Symm-Clashes
1	A	4383	0	4403	28	0

*Continued on next page...*



*Continued from previous page...*

Mol	Chain	Non-H	H(model)	H(added)	Clashes	Symm-Clashes
1	B	4378	0	4399	23	0
2	A	34	0	24	1	0
2	B	34	0	24	2	0
3	A	228	0	0	1	0
3	B	245	0	0	3	0
All	All	9302	0	8850	51	0

The all-atom clashscore is defined as the number of clashes found per 1000 atoms (including hydrogen atoms). The all-atom clashscore for this structure is 3.

All (51) close contacts within the same asymmetric unit are listed below, sorted by their clash magnitude.

Atom-1	Atom-2	Interatomic distance (Å)	Clash overlap (Å)
1:A:510:ARG:HH11	1:A:510:ARG:HG2	1.13	1.06
1:A:292[B]:THR:HG22	1:A:317:GLY:H	1.32	0.91
1:A:517:ARG:HG2	1:A:517:ARG:HH11	1.47	0.78
1:A:5:THR:HG23	1:A:278:ARG:HH12	1.50	0.75
1:B:5:THR:HG23	1:B:278:ARG:HH12	1.52	0.74
1:A:308:LEU:HB3	1:A:311:CYS:SG	2.29	0.72
1:A:510:ARG:NH1	1:A:510:ARG:HG2	1.91	0.66
1:B:291:ASN:HD22	2:B:564:77Z:HN54	1.43	0.65
1:A:291:ASN:HD22	2:A:564:77Z:HN54	1.49	0.61
1:A:52:VAL:HG12	1:A:223[B]:CYS:SG	2.42	0.59
1:A:292[B]:THR:CG2	1:A:317:GLY:H	2.11	0.57
1:A:144:VAL:HB	1:A:394:ARG:HG2	1.89	0.55
1:B:169:VAL:HG12	1:B:173:MET:CE	2.40	0.52
1:A:292[B]:THR:HG22	1:A:317:GLY:N	2.13	0.52
1:A:517:ARG:HG2	1:A:517:ARG:NH1	2.18	0.52
1:B:2:MET:N	3:B:740:HOH:O	2.42	0.51
1:B:169:VAL:HG12	1:B:173:MET:HE3	1.91	0.51
1:B:144:VAL:HB	1:B:394:ARG:HG2	1.93	0.51
1:A:510:ARG:NH1	1:A:510:ARG:CG	2.67	0.50
1:B:17:GLU:HB2	1:B:43:ARG:NH2	2.26	0.49
1:A:22:PRO:HG2	1:A:401:ARG:HG3	1.94	0.49
1:B:455:GLU:HB3	3:B:654:HOH:O	2.11	0.49
1:B:52:VAL:HG12	1:B:223[A]:CYS:SG	2.53	0.49
1:A:219:TYR:HB3	1:A:320:LEU:HD23	1.95	0.48
1:B:160:ILE:HA	1:B:282:SER:OG	2.15	0.47
1:B:22:PRO:HG2	1:B:401:ARG:HG3	1.97	0.47
1:A:236:GLU:CD	1:A:280:ARG:HH22	2.19	0.46
1:A:160:ILE:HA	1:A:282:SER:OG	2.16	0.46

*Continued on next page...*

Continued from previous page...

Atom-1	Atom-2	Interatomic distance (Å)	Clash overlap (Å)
1:A:83:LEU:HB2	1:A:173:MET:HA	1.97	0.46
1:A:258:GLU:HA	1:A:262:ILE:HD12	1.97	0.46
1:A:31:LEU:HD11	1:A:492:LEU:HD22	1.98	0.46
1:B:219:TYR:HB3	1:B:320:LEU:HD23	1.98	0.45
1:A:501:ARG:NH1	3:A:664:HOH:O	2.49	0.45
1:A:506:SER:O	1:A:510:ARG:HD3	2.16	0.44
1:A:182:LEU:HD12	1:A:243:CYS:SG	2.58	0.44
1:B:82:LEU:HD13	1:B:249:ALA:HB2	1.99	0.43
1:A:561:TYR:CE2	1:A:563:SER:HB2	2.54	0.43
1:A:288:SER:O	1:A:292[B]:THR:HG23	2.18	0.43
1:B:182:LEU:HD12	1:B:243:CYS:SG	2.58	0.43
1:B:17:GLU:HB2	1:B:43:ARG:HH22	1.83	0.42
1:B:348:ALA:N	1:B:349:PRO:HD3	2.33	0.42
1:B:155:LYS:HA	1:B:156:PRO:HD3	1.94	0.42
1:B:405:VAL:HG13	1:B:445:CYS:HA	2.02	0.42
1:B:178:VAL:HG23	3:B:734:HOH:O	2.19	0.41
1:B:414:MET:HB2	2:B:564:77Z:H1	2.02	0.41
1:B:172:LYS:HE3	1:B:560:ILE:HD13	2.02	0.41
1:B:562:HIS:O	1:B:563:SER:C	2.58	0.41
1:A:160:ILE:HD12	1:A:282:SER:OG	2.20	0.41
1:B:268:ASN:HB3	1:B:274:CYS:SG	2.62	0.40
1:A:268:ASN:HB3	1:A:274:CYS:SG	2.61	0.40
1:A:236:GLU:OE2	1:A:280:ARG:NH2	2.42	0.40

There are no symmetry-related clashes.

## 5.3 Torsion angles [i](#)

### 5.3.1 Protein backbone [i](#)

In the following table, the Percentiles column shows the percent Ramachandran outliers of the chain as a percentile score with respect to all X-ray entries followed by that with respect to entries of similar resolution.

The Analysed column shows the number of residues for which the backbone conformation was analysed, and the total number of residues.

Mol	Chain	Analysed	Favoured	Allowed	Outliers	Percentiles	
1	A	566/563 (100%)	555 (98%)	10 (2%)	1 (0%)	52	32
1	B	564/563 (100%)	550 (98%)	12 (2%)	2 (0%)	39	20

Continued on next page...

*Continued from previous page...*

Mol	Chain	Analysed	Favoured	Allowed	Outliers	Percentiles	
All	All	1130/1126 (100%)	1105 (98%)	22 (2%)	3 (0%)	46	26

All (3) Ramachandran outliers are listed below:

Mol	Chain	Res	Type
1	B	2	MET
1	A	536	LEU
1	B	536	LEU

### 5.3.2 Protein sidechains ⓘ

In the following table, the Percentiles column shows the percent sidechain outliers of the chain as a percentile score with respect to all X-ray entries followed by that with respect to entries of similar resolution.

The Analysed column shows the number of residues for which the sidechain conformation was analysed, and the total number of residues.

Mol	Chain	Analysed	Rotameric	Outliers	Percentiles	
1	A	484/479 (101%)	478 (99%)	6 (1%)	78	65
1	B	482/479 (101%)	476 (99%)	6 (1%)	78	65
All	All	966/958 (101%)	954 (99%)	12 (1%)	76	65

All (12) residues with a non-rotameric sidechain are listed below:

Mol	Chain	Res	Type
1	A	56	ARG
1	A	150	GLU
1	A	151	LYS
1	A	510	ARG
1	A	517	ARG
1	A	535	LYS
1	B	43	ARG
1	B	56	ARG
1	B	148	GLN
1	B	150	GLU
1	B	151	LYS
1	B	154	ARG

Some sidechains can be flipped to improve hydrogen bonding and reduce clashes. All (1) such sidechains are listed below:

Mol	Chain	Res	Type
1	B	446	GLN

### 5.3.3 RNA [i](#)

There are no RNA molecules in this entry.

## 5.4 Non-standard residues in protein, DNA, RNA chains [i](#)

There are no non-standard protein/DNA/RNA residues in this entry.

## 5.5 Carbohydrates [i](#)

There are no carbohydrates in this entry.

## 5.6 Ligand geometry [i](#)

2 ligands are modelled in this entry.

In the following table, the Counts columns list the number of bonds (or angles) for which Mogul statistics could be retrieved, the number of bonds (or angles) that are observed in the model and the number of bonds (or angles) that are defined in the chemical component dictionary. The Link column lists molecule types, if any, to which the group is linked. The Z score for a bond length (or angle) is the number of standard deviations the observed value is removed from the expected value. A bond length (or angle) with  $|Z| > 2$  is considered an outlier worth inspection. RMSZ is the root-mean-square of all Z scores of the bond lengths (or angles).

Mol	Type	Chain	Res	Link	Bond lengths			Bond angles		
					Counts	RMSZ	# $ Z  > 2$	Counts	RMSZ	# $ Z  > 2$
2	77Z	A	564	-	35,37,37	4.20	4 (11%)	40,55,55	1.68	10 (25%)
2	77Z	B	564	-	35,37,37	4.21	4 (11%)	40,55,55	1.69	9 (22%)

In the following table, the Chirals column lists the number of chiral outliers, the number of chiral centers analysed, the number of these observed in the model and the number defined in the chemical component dictionary. Similar counts are reported in the Torsion and Rings columns. '-' means no outliers of that kind were identified.

Mol	Type	Chain	Res	Link	Chirals	Torsions	Rings
2	77Z	A	564	-	2/2/8/10	0/10/49/49	0/4/4/4
2	77Z	B	564	-	2/2/8/10	0/10/49/49	0/4/4/4

All (8) bond length outliers are listed below:

Mol	Chain	Res	Type	Atoms	Z	Observed(Å)	Ideal(Å)
2	B	564	77Z	C9-C10	-15.21	1.34	1.51
2	A	564	77Z	C9-C10	-15.18	1.34	1.51
2	B	564	77Z	C11-N16	-14.57	1.29	1.46
2	A	564	77Z	C11-N16	-14.55	1.29	1.46
2	B	564	77Z	C11-N12	-6.81	1.37	1.46
2	A	564	77Z	C11-N12	-6.77	1.37	1.46
2	A	564	77Z	O23-C10	10.10	1.37	1.22
2	B	564	77Z	O23-C10	10.12	1.37	1.22

All (19) bond angle outliers are listed below:

Mol	Chain	Res	Type	Atoms	Z	Observed(°)	Ideal(°)
2	B	564	77Z	O23-C10-C4	-4.93	114.31	121.76
2	A	564	77Z	O23-C10-C4	-4.87	114.40	121.76
2	B	564	77Z	C50-O49-C19	-4.07	109.92	117.62
2	A	564	77Z	O21-S15-C14	-3.85	104.35	109.19
2	A	564	77Z	C50-O49-C19	-3.81	110.42	117.62
2	B	564	77Z	O21-S15-C14	-3.77	104.45	109.19
2	B	564	77Z	O22-S15-C14	-2.74	105.75	109.19
2	A	564	77Z	O22-S15-C14	-2.68	105.82	109.19
2	A	564	77Z	O49-C50-C51	-2.55	103.22	109.70
2	B	564	77Z	O49-C50-C51	-2.35	103.71	109.70
2	A	564	77Z	C13-C14-S15	-2.26	117.14	119.04
2	A	564	77Z	C14-C13-N12	-2.04	121.46	122.62
2	B	564	77Z	C13-C14-S15	-2.01	117.36	119.04
2	A	564	77Z	C20-C14-C13	2.06	123.04	120.67
2	B	564	77Z	C20-C14-C13	2.16	123.16	120.67
2	A	564	77Z	C14-S15-N16	2.31	104.77	102.46
2	B	564	77Z	C14-S15-N16	2.35	104.81	102.46
2	A	564	77Z	O22-S15-O21	2.70	120.96	118.78
2	B	564	77Z	O22-S15-O21	3.09	121.27	118.78

All (4) chirality outliers are listed below:

Mol	Chain	Res	Type	Atom
2	A	564	77Z	C9
2	A	564	77Z	C11
2	B	564	77Z	C9
2	B	564	77Z	C11

There are no torsion outliers.

There are no ring outliers.

2 monomers are involved in 3 short contacts:

Mol	Chain	Res	Type	Clashes	Symm-Clashes
2	A	564	77Z	1	0
2	B	564	77Z	2	0

## 5.7 Other polymers [i](#)

There are no such residues in this entry.

## 5.8 Polymer linkage issues [i](#)

There are no chain breaks in this entry.

## 6 Fit of model and data ⓘ

### 6.1 Protein, DNA and RNA chains ⓘ

In the following table, the column labelled ‘#RSRZ> 2’ contains the number (and percentage) of RSRZ outliers, followed by percent RSRZ outliers for the chain as percentile scores relative to all X-ray entries and entries of similar resolution. The OWAB column contains the minimum, median, 95<sup>th</sup> percentile and maximum values of the occupancy-weighted average B-factor per residue. The column labelled ‘Q< 0.9’ lists the number of (and percentage) of residues with an average occupancy less than 0.9.

Mol	Chain	Analysed	<RSRZ>	#RSRZ>2		OWAB(Å <sup>2</sup> )	Q<0.9
1	A	560/563 (99%)	0.70	46 (8%)	14 16	10, 16, 26, 41	1 (0%)
1	B	563/563 (100%)	0.60	46 (8%)	14 16	10, 15, 25, 40	2 (0%)
All	All	1123/1126 (99%)	0.65	92 (8%)	14 16	10, 15, 26, 41	3 (0%)

All (92) RSRZ outliers are listed below:

Mol	Chain	Res	Type	RSRZ
1	A	545	LEU	10.4
1	B	545	LEU	10.3
1	B	542	ALA	10.0
1	B	543	SER	10.0
1	A	541	ALA	9.2
1	A	540	PRO	8.9
1	A	542	ALA	7.7
1	B	1	SER	6.8
1	A	544	GLN	6.4
1	B	540	PRO	6.4
1	A	153	GLY	6.3
1	B	95	HIS	6.0
1	B	152	GLY	5.9
1	A	14	CYS	5.9
1	B	532	THR	5.7
1	B	544	GLN	5.6
1	B	548	SER	5.5
1	B	563	SER	5.5
1	A	16	ALA	5.4
1	A	404	PRO	5.2
1	A	535	LYS	5.1
1	A	402	HIS	4.9
1	A	543	SER	4.9
1	B	150	GLU	4.9

*Continued on next page...*

*Continued from previous page...*

Mol	Chain	Res	Type	RSRZ
1	B	541	ALA	4.7
1	B	149	PRO	4.7
1	A	548	SER	4.7
1	A	405	VAL	4.5
1	B	14	CYS	4.5
1	A	539	ILE	4.5
1	A	534	LEU	4.4
1	A	531	LYS	4.4
1	B	404	PRO	4.2
1	A	376	ALA	4.2
1	B	536	LEU	4.2
1	A	15	ALA	4.1
1	B	535	LYS	4.0
1	B	539	ILE	3.9
1	B	16	ALA	3.9
1	A	95	HIS	3.8
1	B	402	HIS	3.7
1	B	405	VAL	3.7
1	B	546	ASP	3.6
1	B	531	LYS	3.6
1	A	538	PRO	3.5
1	B	151	LYS	3.3
1	B	534	LEU	3.3
1	A	536	LEU	3.3
1	A	537	THR	3.3
1	A	532	THR	3.2
1	B	43	ARG	3.2
1	B	148	GLN	3.1
1	B	537	THR	3.1
1	A	148	GLN	3.1
1	A	309	GLN	3.1
1	B	533	LYS	3.0
1	B	466	LEU	3.0
1	A	563	SER	3.0
1	A	546	ASP	2.9
1	A	352	ASP	2.9
1	A	377	SER	2.9
1	B	110	ASN	2.8
1	A	466	LEU	2.8
1	B	490	ARG	2.7
1	A	113	SER	2.6
1	B	337	ARG	2.6

*Continued on next page...*



*Continued from previous page...*

Mol	Chain	Res	Type	RSRZ
1	A	403	THR	2.5
1	B	538	PRO	2.5
1	B	322	VAL	2.5
1	A	81	LYS	2.5
1	A	86	GLU	2.5
1	A	530	VAL	2.4
1	B	15	ALA	2.4
1	A	322	VAL	2.4
1	B	32	ARG	2.3
1	A	561	TYR	2.3
1	A	154	ARG	2.3
1	A	465	ARG	2.3
1	B	100	LYS	2.2
1	A	158	ARG	2.2
1	B	106	LYS	2.2
1	B	513	SER	2.2
1	A	110	ASN	2.1
1	B	102	GLY	2.1
1	B	528	TRP	2.1
1	A	526	PHE	2.1
1	A	160	ILE	2.1
1	B	355	GLN	2.1
1	B	50	LYS	2.1
1	A	528	TRP	2.1
1	A	353	PRO	2.0
1	B	352	ASP	2.0

## 6.2 Non-standard residues in protein, DNA, RNA chains [i](#)

There are no non-standard protein/DNA/RNA residues in this entry.

## 6.3 Carbohydrates [i](#)

There are no carbohydrates in this entry.

## 6.4 Ligands [i](#)

In the following table, the Atoms column lists the number of modelled atoms in the group and the number defined in the chemical component dictionary. LLDF column lists the quality of electron density of the group with respect to its neighbouring residues in protein, DNA or RNA chains. The B-factors column lists the minimum, median, 95<sup>th</sup> percentile and maximum values of B factors

of atoms in the group. The column labelled 'Q< 0.9' lists the number of atoms with occupancy less than 0.9.

Mol	Type	Chain	Res	Atoms	RSCC	RSR	LLDF	B-factors( $\text{\AA}^2$ )	Q<0.9
2	77Z	B	564	34/34	0.93	0.12	1.08	13,14,17,17	0
2	77Z	A	564	34/34	0.92	0.12	0.84	13,14,16,16	0

## 6.5 Other polymers [i](#)

There are no such residues in this entry.