



Full wwPDB X-ray Structure Validation Report ⓘ

Sep 14, 2016 – 02:07 PM EDT

PDB ID : 5HNA
Title : Crystal structure of Plasmodium vivax geranylgeranylpyrophosphate synthase complexed with BPH-1251
Authors : Liu, Y.-L.; Zhang, Y.; Oldfield, E.
Deposited on : 2016-01-18
Resolution : 2.69 Å(reported)

This is a Full wwPDB X-ray Structure Validation Report for a publicly released PDB entry.

We welcome your comments at validation@mail.wwpdb.org

A user guide is available at

<http://wwpdb.org/validation/2016/XrayValidationReportHelp>

with specific help available everywhere you see the ⓘ symbol.

The following versions of software and data (see [references ⓘ](#)) were used in the production of this report:

MolProbity : 4.02b-467
Mogul : 1.7.1 (RC1), CSD as537be (2016)
Xtriage (Phenix) : 1.9-1692
EDS : rb-20027939
Percentile statistics : 20151230.v01 (using entries in the PDB archive December 30th 2015)
Refmac : 5.8.0135
CCP4 : 6.5.0
Ideal geometry (proteins) : Engh & Huber (2001)
Ideal geometry (DNA, RNA) : Parkinson et al. (1996)
Validation Pipeline (wwPDB-VP) : rb-20027939

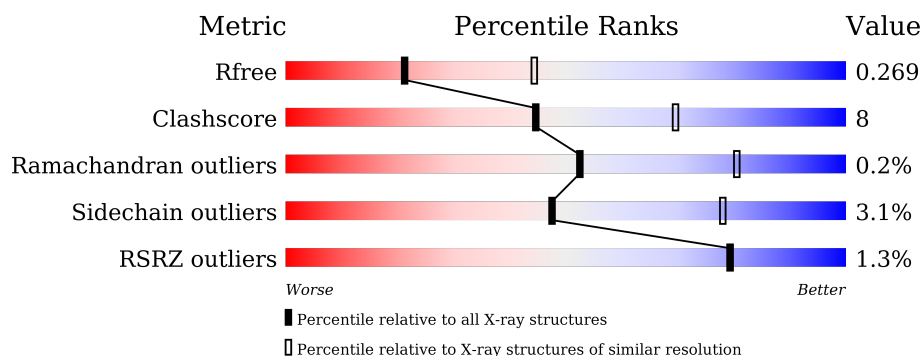
1 Overall quality at a glance

The following experimental techniques were used to determine the structure:

X-RAY DIFFRACTION

The reported resolution of this entry is 2.69 Å.

Percentile scores (ranging between 0-100) for global validation metrics of the entry are shown in the following graphic. The table shows the number of entries on which the scores are based.



Metric	Whole archive (#Entries)	Similar resolution (#Entries, resolution range(Å))
R_{free}	91344	2103 (2.70-2.70)
Clashscore	102246	2422 (2.70-2.70)
Ramachandran outliers	100387	2382 (2.70-2.70)
Sidechain outliers	100360	2382 (2.70-2.70)
RSRZ outliers	91569	2107 (2.70-2.70)

The table below summarises the geometric issues observed across the polymeric chains and their fit to the electron density. The red, orange, yellow and green segments on the lower bar indicate the fraction of residues that contain outliers for ≥ 3 , 2, 1 and 0 types of geometric quality criteria. A grey segment represents the fraction of residues that are not modelled. The numeric value for each fraction is indicated below the corresponding segment, with a dot representing fractions $\leq 5\%$. The upper red bar (where present) indicates the fraction of residues that have poor fit to the electron density. The numeric value is given above the bar.

Mol	Chain	Length	Quality of chain
1	A	375	<div> <div> <div></div> <div>77%</div> <div>15%</div> <div>• 6%</div> </div> </div>
1	B	375	<div> <div> <div></div> <div>79%</div> <div>13%</div> <div>• 6%</div> </div> </div>
1	C	375	<div> <div> <div></div> <div>75%</div> <div>17%</div> <div>• 6%</div> </div> </div>
1	D	375	<div> <div> <div></div> <div>74%</div> <div>19%</div> <div>• 6%</div> </div> </div>

The following table lists non-polymeric compounds, carbohydrate monomers and non-standard residues in protein, DNA, RNA chains that are outliers for geometric or electron-density-fit crite-

ria:

Mol	Type	Chain	Res	Chirality	Geometry	Clashes	Electron density
2	63D	A	401	-	-	-	X
2	63D	B	401	-	-	-	X
2	63D	C	401	-	-	-	X
2	63D	D	401	-	-	-	X

2 Entry composition

There are 3 unique types of molecules in this entry. The entry contains 11569 atoms, of which 0 are hydrogens and 0 are deuteriums.

In the tables below, the ZeroOcc column contains the number of atoms modelled with zero occupancy, the AltConf column contains the number of residues with at least one atom in alternate conformation and the Trace column contains the number of residues modelled with at most 2 atoms.

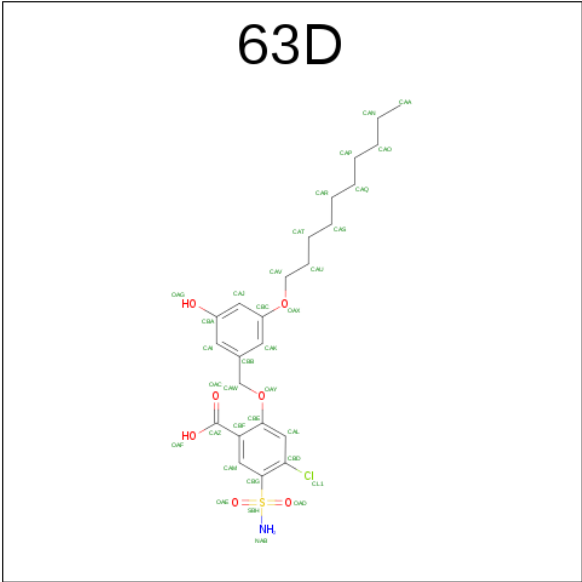
- Molecule 1 is a protein called Farnesyl pyrophosphate synthase, putative.

Mol	Chain	Residues	Atoms					ZeroOcc	AltConf	Trace
1	A	352	Total	C	N	O	S	0	0	0
			2826	1838	448	525	15			
1	B	352	Total	C	N	O	S	0	0	0
			2826	1838	448	525	15			
1	C	352	Total	C	N	O	S	0	0	0
			2826	1838	448	525	15			
1	D	352	Total	C	N	O	S	0	0	0
			2826	1838	448	525	15			

There are 8 discrepancies between the modelled and reference sequences:

Chain	Residue	Modelled	Actual	Comment	Reference
A	134	MET	THR	conflict	UNP A5K4U6
A	227	ASP	ASN	conflict	UNP A5K4U6
B	134	MET	THR	conflict	UNP A5K4U6
B	227	ASP	ASN	conflict	UNP A5K4U6
C	134	MET	THR	conflict	UNP A5K4U6
C	227	ASP	ASN	conflict	UNP A5K4U6
D	134	MET	THR	conflict	UNP A5K4U6
D	227	ASP	ASN	conflict	UNP A5K4U6

- Molecule 2 is 4-chloro-2-([3-(decyloxy)-5-hydroxybenzyl]oxy)-5-sulfamoylbenzoic acid (three-letter code: 63D) (formula: C₂₄H₃₂ClNO₇S).



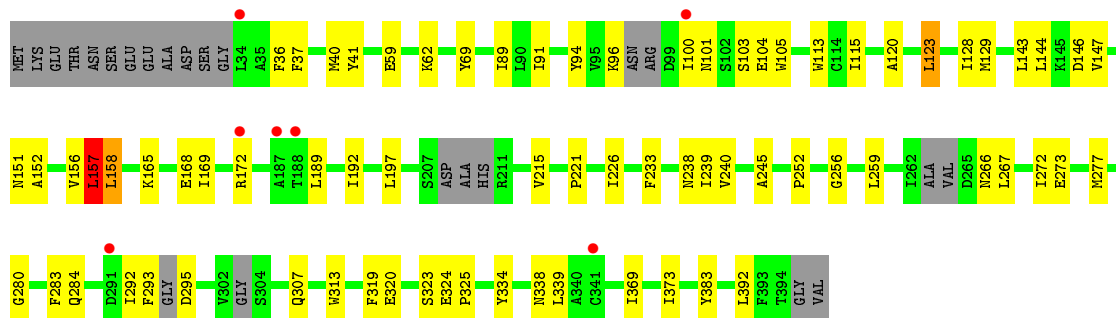
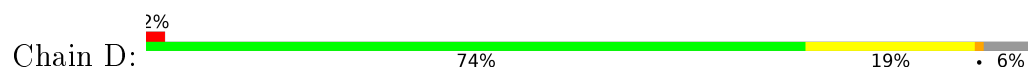
Mol	Chain	Residues	Atoms						ZeroOcc	AltConf
2	A	1	Total	C	Cl	N	O	S	0	0
			34	24	1	1	7	1		
2	B	1	Total	C	Cl	N	O	S	0	0
			34	24	1	1	7	1		
2	C	1	Total	C	Cl	N	O	S	0	0
			34	24	1	1	7	1		
2	D	1	Total	C	Cl	N	O	S	0	0
			34	24	1	1	7	1		

- Molecule 3 is water.

Mol	Chain	Residues	Atoms		ZeroOcc	AltConf
3	A	49	Total	O	0	0
			49	49		
3	B	27	Total	O	0	0
			27	27		
3	C	24	Total	O	0	0
			24	24		
3	D	29	Total	O	0	0
			29	29		



- Molecule 1: Farnesyl pyrophosphate synthase, putative



4 Data and refinement statistics

Property	Value	Source
Space group	P 21 21 21	Depositor
Cell constants a, b, c, α , β , γ	107.45Å 108.62Å 140.67Å 90.00° 90.00° 90.00°	Depositor
Resolution (Å)	39.96 – 2.69 39.96 – 2.69	Depositor EDS
% Data completeness (in resolution range)	98.7 (39.96-2.69) 98.7 (39.96-2.69)	Depositor EDS
R_{merge}	(Not available)	Depositor
R_{sym}	(Not available)	Depositor
$\langle I/\sigma(I) \rangle$ ¹	1.40 (at 2.69Å)	Xtriage
Refinement program	PHENIX	Depositor
R, R_{free}	0.192 , 0.267 0.192 , 0.269	Depositor DCC
R_{free} test set	2322 reflections (5.09%)	DCC
Wilson B-factor (Å ²)	47.3	Xtriage
Anisotropy	0.110	Xtriage
Bulk solvent k_{sol} (e/Å ³), B_{sol} (Å ²)	0.33 , 48.2	EDS
L-test for twinning ²	$\langle L \rangle = 0.49$, $\langle L^2 \rangle = 0.32$	Xtriage
Estimated twinning fraction	0.017 for k,h,-l	Xtriage
F_o, F_c correlation	0.94	EDS
Total number of atoms	11569	wwPDB-VP
Average B, all atoms (Å ²)	40.0	wwPDB-VP

Xtriage's analysis on translational NCS is as follows: *The largest off-origin peak in the Patterson function is 3.96% of the height of the origin peak. No significant pseudotranslation is detected.*

¹Intensities estimated from amplitudes.

²Theoretical values of $\langle |L| \rangle$, $\langle L^2 \rangle$ for acentric reflections are 0.5, 0.333 respectively for untwinned datasets, and 0.375, 0.2 for perfectly twinned datasets.

5 Model quality

5.1 Standard geometry

Bond lengths and bond angles in the following residue types are not validated in this section: 63D

The Z score for a bond length (or angle) is the number of standard deviations the observed value is removed from the expected value. A bond length (or angle) with $|Z| > 5$ is considered an outlier worth inspection. RMSZ is the root-mean-square of all Z scores of the bond lengths (or angles).

Mol	Chain	Bond lengths		Bond angles	
		RMSZ	# $ Z > 5$	RMSZ	# $ Z > 5$
1	A	0.49	2/2883 (0.1%)	0.62	2/3904 (0.1%)
1	B	0.48	0/2883	0.63	2/3904 (0.1%)
1	C	0.43	0/2883	0.59	1/3904 (0.0%)
1	D	0.42	0/2883	0.58	3/3904 (0.1%)
All	All	0.46	2/11532 (0.0%)	0.60	8/15616 (0.1%)

Chiral center outliers are detected by calculating the chiral volume of a chiral center and verifying if the center is modelled as a planar moiety or with the opposite hand. A planarity outlier is detected by checking planarity of atoms in a peptide group, atoms in a mainchain group or atoms of a sidechain that are expected to be planar.

Mol	Chain	#Chirality outliers	#Planarity outliers
1	B	0	1

All (2) bond length outliers are listed below:

Mol	Chain	Res	Type	Atoms	Z	Observed(Å)	Ideal(Å)
1	A	366	LYS	CD-CE	-5.83	1.36	1.51
1	A	96	LYS	CD-CE	-5.32	1.38	1.51

All (8) bond angle outliers are listed below:

Mol	Chain	Res	Type	Atoms	Z	Observed(°)	Ideal(°)
1	B	157	LEU	CA-CB-CG	-10.19	91.87	115.30
1	A	157	LEU	CA-CB-CG	-8.52	95.71	115.30
1	C	157	LEU	CA-CB-CG	-6.94	99.33	115.30
1	D	157	LEU	CA-CB-CG	-6.56	100.22	115.30
1	B	158	LEU	CA-CB-CG	-6.33	100.75	115.30
1	D	158	LEU	CA-CB-CG	-5.70	102.20	115.30
1	A	123	LEU	CB-CG-CD2	-5.62	101.44	111.00

Continued on next page...

Continued from previous page...

Mol	Chain	Res	Type	Atoms	Z	Observed(°)	Ideal(°)
1	D	123	LEU	CA-CB-CG	5.50	127.95	115.30

There are no chirality outliers.

All (1) planarity outliers are listed below:

Mol	Chain	Res	Type	Group
1	B	94	TYR	Peptide

5.2 Too-close contacts [i](#)

In the following table, the Non-H and H(model) columns list the number of non-hydrogen atoms and hydrogen atoms in the chain respectively. The H(added) column lists the number of hydrogen atoms added and optimized by MolProbity. The Clashes column lists the number of clashes within the asymmetric unit, whereas Symm-Clashes lists symmetry related clashes.

Mol	Chain	Non-H	H(model)	H(added)	Clashes	Symm-Clashes
1	A	2826	0	2687	47	0
1	B	2826	0	2687	42	0
1	C	2826	0	2687	49	0
1	D	2826	0	2687	45	0
2	A	34	0	0	10	0
2	B	34	0	0	4	0
2	C	34	0	0	5	0
2	D	34	0	0	3	0
3	A	49	0	0	1	0
3	B	27	0	0	2	0
3	C	24	0	0	1	0
3	D	29	0	0	0	0
All	All	11569	0	10748	176	0

The all-atom clashscore is defined as the number of clashes found per 1000 atoms (including hydrogen atoms). The all-atom clashscore for this structure is 8.

All (176) close contacts within the same asymmetric unit are listed below, sorted by their clash magnitude.

Atom-1	Atom-2	Interatomic distance (Å)	Clash overlap (Å)
1:B:40:MET:HE2	1:B:43:LYS:NZ	1.48	1.26
1:B:40:MET:CE	1:B:43:LYS:NZ	2.14	1.10
1:B:40:MET:CE	1:B:43:LYS:HZ3	1.66	1.07

Continued on next page...

Continued from previous page...

Atom-1	Atom-2	Interatomic distance (Å)	Clash overlap (Å)
1:B:40:MET:HE2	1:B:43:LYS:HZ3	0.80	0.92
1:B:196:HIS:HE2	1:B:206:TYR:HH	1.16	0.89
1:C:281:GLU:OE2	1:C:361:TYR:OH	2.00	0.80
1:B:135:ARG:NH1	2:B:401:63D:OAF	2.18	0.77
1:C:165:LYS:NZ	1:C:168:GLU:OE2	2.18	0.77
1:A:168:GLU:O	1:A:172:ARG:HG3	1.85	0.75
1:A:119:GLN:HE22	2:A:401:63D:CBF	2.00	0.74
1:C:289:TYR:HE2	1:C:355:ARG:HG2	1.54	0.72
1:A:238:ASN:HD21	1:B:58:GLU:H	1.38	0.72
2:A:401:63D:CAO	1:B:157:LEU:HD13	2.21	0.70
1:B:293:PHE:O	1:B:295:ASP:N	2.24	0.70
1:C:233:PHE:HE2	1:C:313:TRP:CD1	2.10	0.69
1:A:240:VAL:HG22	1:A:284:GLN:HG2	1.75	0.68
1:D:240:VAL:HG22	1:D:284:GLN:HG2	1.76	0.68
1:A:123:LEU:HD21	2:A:401:63D:CAZ	2.24	0.68
1:D:266:ASN:OD1	1:D:267:LEU:N	2.26	0.67
1:A:133:GLU:OE2	1:D:338:ASN:ND2	2.28	0.66
1:A:144:LEU:HB2	1:A:147:VAL:HG13	1.76	0.66
1:A:119:GLN:O	1:A:123:LEU:HG	1.96	0.66
1:C:75:TYR:OH	1:C:139:TYR:O	2.13	0.64
1:C:187:ALA:O	1:C:191:THR:HG23	1.98	0.63
1:D:293:PHE:O	1:D:295:ASP:N	2.32	0.62
1:A:266:ASN:OD1	1:A:267:LEU:N	2.34	0.61
1:A:135:ARG:NH1	2:A:401:63D:OAF	2.33	0.61
1:B:326:ASP:OD2	1:B:352:TYR:OH	2.15	0.60
1:B:317:LYS:HE3	1:B:357:HIS:CD2	2.36	0.60
1:D:41:TYR:HB2	1:D:113:TRP:CZ2	2.37	0.60
2:C:401:63D:CAO	1:D:157:LEU:HD22	2.32	0.60
1:B:41:TYR:HB2	1:B:113:TRP:CZ2	2.37	0.59
1:A:157:LEU:HD13	2:B:401:63D:CAP	2.33	0.58
1:A:157:LEU:HD22	2:B:401:63D:CAO	2.35	0.57
1:C:145:LYS:HD2	1:D:221:PRO:HA	1.86	0.57
1:D:144:LEU:HB2	1:D:147:VAL:HG13	1.85	0.57
1:D:91:ILE:HG22	1:D:256:GLY:HA3	1.87	0.57
1:C:41:TYR:HB2	1:C:113:TRP:CZ2	2.39	0.56
1:B:69:TYR:CE1	1:B:158:LEU:HD22	2.39	0.56
1:D:89:ILE:HG23	1:D:105:TRP:CZ3	2.40	0.56
2:C:401:63D:CAP	1:D:157:LEU:HD13	2.36	0.56
1:A:69:TYR:CE1	1:A:158:LEU:HD22	2.41	0.56
1:C:205:LYS:HD3	1:C:213:ILE:HD11	1.86	0.56
1:C:62:LYS:O	3:C:501:HOH:O	2.18	0.55

Continued on next page...

Continued from previous page...

Atom-1	Atom-2	Interatomic distance (Å)	Clash overlap (Å)
1:C:144:LEU:HB2	1:C:147:VAL:HG13	1.89	0.55
1:D:89:ILE:HG23	1:D:105:TRP:HZ3	1.72	0.54
1:D:94:TYR:HE1	1:D:383:TYR:HE1	1.53	0.54
1:A:119:GLN:HG3	1:A:247:TYR:HE1	1.73	0.54
1:C:36:PHE:O	1:C:38:ARG:N	2.41	0.54
1:B:285:ILE:HD12	1:B:361:TYR:CZ	2.43	0.53
1:C:44:TYR:OH	1:C:106:GLU:O	2.25	0.53
1:A:195:GLN:HG2	2:A:401:63D:CAS	2.40	0.52
1:C:388:LEU:HD11	1:C:392:LEU:HD13	1.91	0.52
1:D:226:ILE:HD11	1:D:334:TYR:CD2	2.45	0.52
1:B:290:LEU:HD13	1:B:299:THR:HG22	1.92	0.52
1:B:40:MET:SD	1:B:43:LYS:NZ	2.82	0.52
1:B:95:VAL:O	1:B:96:LYS:HG2	2.10	0.51
1:C:213:ILE:HD13	1:D:146:ASP:HB3	1.92	0.51
1:B:196:HIS:NE2	1:B:206:TYR:OH	2.20	0.51
1:A:293:PHE:CE1	1:A:355:ARG:HG2	2.46	0.51
1:B:266:ASN:OD1	1:B:267:LEU:N	2.44	0.50
1:C:157:LEU:HD22	2:D:401:63D:CAO	2.42	0.50
1:C:226:ILE:HG23	1:C:231:ILE:HD11	1.93	0.50
1:C:123:LEU:HD22	2:C:401:63D:CAZ	2.41	0.50
1:C:88:VAL:HG11	1:C:112:ALA:HA	1.94	0.50
1:D:69:TYR:CD1	1:D:158:LEU:HD22	2.47	0.50
1:A:81:LYS:NZ	2:A:401:63D:CL1	2.71	0.50
1:B:93:GLU:HB2	1:B:105:TRP:HH2	1.77	0.49
1:B:317:LYS:HE3	1:B:357:HIS:HD2	1.77	0.49
1:A:111:LEU:O	1:A:115:ILE:HG13	2.12	0.49
1:C:123:LEU:HD22	2:C:401:63D:OAF	2.13	0.49
1:B:147:VAL:O	1:B:151:ASN:HB2	2.13	0.49
1:C:312:THR:O	1:C:316:ILE:HG13	2.13	0.49
1:C:289:TYR:CE2	1:C:355:ARG:HG2	2.42	0.49
1:A:322:CYS:HA	1:A:352:TYR:CE1	2.47	0.49
1:C:366:LYS:HG3	1:C:389:LEU:HD21	1.95	0.48
1:D:273:GLU:O	1:D:277:MET:HG3	2.13	0.48
1:A:87:LEU:HD13	1:A:388:LEU:HD13	1.94	0.48
1:D:69:TYR:CE1	1:D:158:LEU:HD22	2.48	0.48
1:C:75:TYR:HE1	1:D:215:VAL:HG13	1.77	0.48
1:C:185:ARG:NH2	1:D:168:GLU:OE1	2.37	0.48
1:C:158:LEU:HB2	1:D:192:ILE:HG21	1.94	0.48
1:B:119:GLN:O	1:B:123:LEU:HG	2.13	0.48
1:B:295:ASP:HA	3:B:503:HOH:O	2.14	0.48
1:B:316:ILE:O	1:B:320:GLU:HG2	2.14	0.48

Continued on next page...

Continued from previous page...

Atom-1	Atom-2	Interatomic distance (Å)	Clash overlap (Å)
1:C:219:ASN:O	1:C:221:PRO:HD3	2.14	0.48
1:A:41:TYR:HB2	1:A:113:TRP:CZ2	2.49	0.47
1:D:233:PHE:HE1	1:D:313:TRP:CD1	2.32	0.47
1:A:69:TYR:CD1	1:A:158:LEU:HD22	2.49	0.47
1:A:123:LEU:HD21	2:A:401:63D:OAC	2.15	0.47
1:C:157:LEU:HD13	2:D:401:63D:CAP	2.44	0.47
1:D:100:ILE:HG23	1:D:104:GLU:HB2	1.96	0.47
1:B:340:ALA:O	1:B:344:VAL:HG23	2.15	0.46
1:C:233:PHE:CE2	1:C:313:TRP:CD1	2.98	0.46
1:B:245:ALA:HB2	1:B:280:GLY:HA3	1.98	0.45
1:C:250:PHE:CE1	1:C:273:GLU:HB2	2.51	0.45
1:C:75:TYR:CE1	1:D:215:VAL:HG13	2.50	0.45
1:A:324:GLU:N	1:A:325:PRO:HD2	2.32	0.45
1:A:67:LYS:HB3	1:A:67:LYS:HE2	1.76	0.45
1:A:238:ASN:ND2	1:B:58:GLU:H	2.08	0.45
1:A:277:MET:HE3	3:A:516:HOH:O	2.17	0.45
1:D:292:ILE:HG23	1:D:293:PHE:CE1	2.52	0.45
1:A:239:ILE:HD12	1:A:311:LEU:HD23	1.98	0.45
1:C:107:LYS:NZ	1:C:174:GLU:OE2	2.43	0.45
1:B:355:ARG:H	1:B:355:ARG:HG2	1.58	0.44
1:A:273:GLU:O	1:A:277:MET:HG3	2.18	0.44
1:B:370:LEU:HA	1:B:370:LEU:HD23	1.82	0.44
1:C:230:MET:HB3	1:C:230:MET:HE2	1.86	0.44
1:C:195:GLN:HG2	2:C:401:63D:CAS	2.48	0.44
1:D:101:ASN:OD1	1:D:103:SER:N	2.50	0.44
1:B:43:LYS:HG3	1:B:44:TYR:N	2.32	0.44
1:D:245:ALA:HB2	1:D:280:GLY:HA3	1.99	0.44
1:A:147:VAL:HA	1:A:151:ASN:HD22	1.83	0.44
1:D:323:SER:HB2	1:D:325:PRO:HD2	2.00	0.44
2:A:401:63D:CAP	1:B:157:LEU:HD13	2.48	0.43
1:B:339:LEU:HA	1:B:339:LEU:HD23	1.71	0.43
1:A:111:LEU:HD13	1:A:255:CYS:HB3	1.99	0.43
1:C:93:GLU:HB2	1:C:105:TRP:HH2	1.83	0.43
1:A:168:GLU:HG3	1:A:172:ARG:HG2	1.99	0.43
2:A:401:63D:CAW	2:A:401:63D:CAZ	2.96	0.43
2:B:401:63D:CAW	2:B:401:63D:OAF	2.66	0.43
1:C:388:LEU:CD1	1:C:392:LEU:HD13	2.49	0.43
1:D:259:LEU:HD23	1:D:259:LEU:HA	1.84	0.43
1:B:189:LEU:HD12	1:B:189:LEU:HA	1.80	0.43
1:C:129:MET:HE1	1:C:195:GLN:HG3	2.01	0.43
1:D:339:LEU:HD23	1:D:339:LEU:HA	1.82	0.43

Continued on next page...

Continued from previous page...

Atom-1	Atom-2	Interatomic distance (Å)	Clash overlap (Å)
1:A:123:LEU:HD23	1:A:123:LEU:HA	1.59	0.43
1:C:212:GLU:N	1:C:212:GLU:OE1	2.52	0.43
1:D:324:GLU:N	1:D:325:PRO:HD2	2.34	0.43
1:A:219:ASN:O	1:A:221:PRO:HD3	2.18	0.43
1:D:283:PHE:HB2	1:D:392:LEU:HD21	2.01	0.43
1:C:324:GLU:N	1:C:325:PRO:HD2	2.34	0.43
1:D:165:LYS:O	1:D:169:ILE:HG13	2.18	0.43
1:D:233:PHE:HE2	1:D:320:GLU:OE1	2.01	0.43
1:A:233:PHE:HB3	1:A:237:LYS:NZ	2.34	0.42
1:C:55:TYR:O	1:C:62:LYS:HE2	2.19	0.42
1:A:96:LYS:C	1:A:96:LYS:HD3	2.39	0.42
1:C:119:GLN:O	1:C:123:LEU:HG	2.19	0.42
1:D:272:ILE:HA	1:D:272:ILE:HD13	1.71	0.42
1:A:123:LEU:HD11	2:A:401:63D:OAC	2.19	0.42
1:C:123:LEU:HD11	1:C:136:ARG:NH1	2.33	0.42
1:C:272:ILE:HD13	1:C:272:ILE:HA	1.79	0.42
1:B:187:ALA:O	1:B:191:THR:HG23	2.19	0.42
1:B:44:TYR:OH	1:B:109:ALA:HB3	2.20	0.42
1:B:176:CYS:N	3:B:501:HOH:O	2.52	0.42
1:A:101:ASN:OD1	1:A:103:SER:HB3	2.20	0.42
2:D:401:63D:CAW	2:D:401:63D:OAF	2.67	0.42
1:B:313:TRP:HB3	1:B:314:PRO:HD3	2.01	0.42
1:A:233:PHE:HB3	1:A:237:LYS:HZ3	1.84	0.42
1:A:324:GLU:OE2	1:A:325:PRO:HD3	2.20	0.42
1:D:128:ILE:HD11	1:D:152:ALA:HB1	2.01	0.42
1:D:369:ILE:O	1:D:373:ILE:HG13	2.19	0.42
1:B:96:LYS:HZ1	1:B:99:ASP:N	2.17	0.41
1:C:150:LYS:HA	1:D:129:MET:HG2	2.02	0.41
1:D:143:LEU:HA	1:D:143:LEU:HD23	1.78	0.41
1:B:40:MET:CE	1:B:43:LYS:HZ2	2.20	0.41
1:D:147:VAL:O	1:D:151:ASN:HB2	2.20	0.41
1:D:168:GLU:O	1:D:172:ARG:HB3	2.21	0.41
1:A:92:TYR:OH	1:A:104:GLU:HB3	2.20	0.41
1:A:145:LYS:HD3	1:A:145:LYS:HA	1.77	0.41
1:A:49:LEU:HD23	1:A:49:LEU:HA	1.90	0.41
1:C:125:ALA:HA	1:C:128:ILE:HD12	2.02	0.41
1:A:42:ASP:C	1:A:43:LYS:HE2	2.41	0.41
1:C:201:ILE:HA	1:C:201:ILE:HD12	1.82	0.41
1:C:237:LYS:HE3	1:C:281:GLU:CG	2.50	0.41
1:C:354:ILE:HA	1:C:354:ILE:HD13	1.90	0.41
1:D:115:ILE:HD12	1:D:252:PRO:HB3	2.02	0.41

Continued on next page...

Continued from previous page...

Atom-1	Atom-2	Interatomic distance (Å)	Clash overlap (Å)
1:A:378:HIS:CE1	1:A:381:ILE:HG13	2.55	0.41
1:C:238:ASN:HA	1:C:238:ASN:HD22	1.66	0.41
1:D:120:ALA:O	1:D:123:LEU:HG	2.21	0.41
1:A:190:LYS:HD3	1:A:246:TYR:CE1	2.56	0.41
1:D:59:GLU:HA	1:D:62:LYS:HB2	2.02	0.41
1:B:317:LYS:HD2	1:B:317:LYS:HA	1.90	0.40
1:D:197:LEU:HB3	1:D:239:ILE:HG12	2.03	0.40
1:A:250:PHE:CZ	1:A:254:VAL:HG21	2.57	0.40
1:B:205:LYS:HG3	1:B:206:TYR:CD1	2.57	0.40

There are no symmetry-related clashes.

5.3 Torsion angles [i](#)

5.3.1 Protein backbone [i](#)

In the following table, the Percentiles column shows the percent Ramachandran outliers of the chain as a percentile score with respect to all X-ray entries followed by that with respect to entries of similar resolution.

The Analysed column shows the number of residues for which the backbone conformation was analysed, and the total number of residues.

Mol	Chain	Analysed	Favoured	Allowed	Outliers	Percentiles	
1	A	340/375 (91%)	326 (96%)	14 (4%)	0	100	100
1	B	340/375 (91%)	325 (96%)	14 (4%)	1 (0%)	46	75
1	C	340/375 (91%)	324 (95%)	14 (4%)	2 (1%)	30	59
1	D	340/375 (91%)	327 (96%)	13 (4%)	0	100	100
All	All	1360/1500 (91%)	1302 (96%)	55 (4%)	3 (0%)	52	80

All (3) Ramachandran outliers are listed below:

Mol	Chain	Res	Type
1	B	37	PHE
1	C	37	PHE
1	C	205	LYS

5.3.2 Protein sidechains ⓘ

In the following table, the Percentiles column shows the percent sidechain outliers of the chain as a percentile score with respect to all X-ray entries followed by that with respect to entries of similar resolution.

The Analysed column shows the number of residues for which the sidechain conformation was analysed, and the total number of residues.

Mol	Chain	Analysed	Rotameric	Outliers	Percentiles	
1	A	287/339 (85%)	276 (96%)	11 (4%)	40	71
1	B	287/339 (85%)	280 (98%)	7 (2%)	57	85
1	C	287/339 (85%)	279 (97%)	8 (3%)	51	81
1	D	287/339 (85%)	277 (96%)	10 (4%)	43	74
All	All	1148/1356 (85%)	1112 (97%)	36 (3%)	47	78

All (36) residues with a non-rotameric sidechain are listed below:

Mol	Chain	Res	Type
1	A	36	PHE
1	A	37	PHE
1	A	42	ASP
1	A	67	LYS
1	A	119	GLN
1	A	147	VAL
1	A	156	VAL
1	A	157	LEU
1	A	191	THR
1	A	319	PHE
1	A	347	SER
1	B	36	PHE
1	B	147	VAL
1	B	189	LEU
1	B	191	THR
1	B	268	ILE
1	B	293	PHE
1	B	310	LYS
1	C	42	ASP
1	C	59	GLU
1	C	66	SER
1	C	103	SER
1	C	157	LEU
1	C	158	LEU

Continued on next page...

Continued from previous page...

Mol	Chain	Res	Type
1	C	191	THR
1	C	247	TYR
1	D	36	PHE
1	D	37	PHE
1	D	40	MET
1	D	96	LYS
1	D	156	VAL
1	D	157	LEU
1	D	189	LEU
1	D	238	ASN
1	D	307	GLN
1	D	319	PHE

Some sidechains can be flipped to improve hydrogen bonding and reduce clashes. All (6) such sidechains are listed below:

Mol	Chain	Res	Type
1	A	119	GLN
1	A	238	ASN
1	B	338	ASN
1	C	195	GLN
1	C	351	GLN
1	D	119	GLN

5.3.3 RNA [i](#)

There are no RNA molecules in this entry.

5.4 Non-standard residues in protein, DNA, RNA chains [i](#)

There are no non-standard protein/DNA/RNA residues in this entry.

5.5 Carbohydrates [i](#)

There are no carbohydrates in this entry.

5.6 Ligand geometry [i](#)

4 ligands are modelled in this entry.

In the following table, the Counts columns list the number of bonds (or angles) for which Mogul statistics could be retrieved, the number of bonds (or angles) that are observed in the model and the number of bonds (or angles) that are defined in the chemical component dictionary. The Link column lists molecule types, if any, to which the group is linked. The Z score for a bond length (or angle) is the number of standard deviations the observed value is removed from the expected value. A bond length (or angle) with $|Z| > 2$ is considered an outlier worth inspection. RMSZ is the root-mean-square of all Z scores of the bond lengths (or angles).

Mol	Type	Chain	Res	Link	Bond lengths			Bond angles		
					Counts	RMSZ	# Z > 2	Counts	RMSZ	# Z > 2
2	63D	A	401	-	32,35,35	2.53	9 (28%)	43,47,47	3.71	16 (37%)
2	63D	B	401	-	32,35,35	2.38	4 (12%)	43,47,47	3.04	16 (37%)
2	63D	C	401	-	32,35,35	2.51	6 (18%)	43,47,47	3.32	20 (46%)
2	63D	D	401	-	32,35,35	2.41	6 (18%)	43,47,47	2.76	12 (27%)

In the following table, the Chirals column lists the number of chiral outliers, the number of chiral centers analysed, the number of these observed in the model and the number defined in the chemical component dictionary. Similar counts are reported in the Torsion and Rings columns. '-' means no outliers of that kind were identified.

Mol	Type	Chain	Res	Link	Chirals	Torsions	Rings
2	63D	A	401	-	-	0/22/26/26	0/2/2/2
2	63D	B	401	-	-	0/22/26/26	0/2/2/2
2	63D	C	401	-	-	0/22/26/26	0/2/2/2
2	63D	D	401	-	-	0/22/26/26	0/2/2/2

All (25) bond length outliers are listed below:

Mol	Chain	Res	Type	Atoms	Z	Observed(Å)	Ideal(Å)
2	D	401	63D	CAW-CBB	-5.52	1.38	1.50
2	D	401	63D	SBH-NAB	-4.61	1.52	1.60
2	A	401	63D	CAW-CBB	-4.49	1.40	1.50
2	B	401	63D	CAW-CBB	-4.46	1.40	1.50
2	C	401	63D	CAW-CBB	-3.72	1.42	1.50
2	A	401	63D	CAM-CBG	-3.69	1.33	1.39
2	A	401	63D	CBD-CL1	-2.63	1.66	1.73
2	A	401	63D	SBH-NAB	-2.54	1.56	1.60
2	B	401	63D	SBH-NAB	-2.35	1.56	1.60
2	A	401	63D	CAM-CBF	-2.21	1.36	1.39
2	C	401	63D	CAM-CBF	-2.02	1.36	1.39
2	A	401	63D	CAL-CBD	2.15	1.42	1.38
2	C	401	63D	CAK-CBC	2.17	1.42	1.38
2	A	401	63D	OAY-CAW	2.17	1.50	1.43
2	D	401	63D	CBF-CBE	2.28	1.44	1.40

Continued on next page...

Continued from previous page...

Mol	Chain	Res	Type	Atoms	Z	Observed(Å)	Ideal(Å)
2	C	401	63D	CAL-CBD	2.66	1.43	1.38
2	D	401	63D	CBG-SBH	2.82	1.81	1.77
2	D	401	63D	OAE-SBH	7.09	1.52	1.43
2	A	401	63D	OAD-SBH	7.41	1.53	1.43
2	D	401	63D	OAD-SBH	7.84	1.53	1.43
2	B	401	63D	OAD-SBH	8.08	1.54	1.43
2	B	401	63D	OAE-SBH	8.14	1.54	1.43
2	C	401	63D	OAD-SBH	8.43	1.54	1.43
2	A	401	63D	OAE-SBH	8.67	1.54	1.43
2	C	401	63D	OAE-SBH	9.06	1.55	1.43

All (64) bond angle outliers are listed below:

Mol	Chain	Res	Type	Atoms	Z	Observed(°)	Ideal(°)
2	A	401	63D	CAM-CBF-CAZ	-12.05	101.72	120.16
2	A	401	63D	CAM-CBG-SBH	-11.01	104.44	118.40
2	B	401	63D	CAM-CBF-CAZ	-9.49	105.64	120.16
2	C	401	63D	CAM-CBF-CAZ	-9.03	106.35	120.16
2	D	401	63D	OAE-SBH-OAD	-8.55	107.39	118.87
2	D	401	63D	CAM-CBF-CAZ	-7.19	109.17	120.16
2	C	401	63D	CAM-CBG-SBH	-6.14	110.62	118.40
2	B	401	63D	OAE-SBH-OAD	-6.00	110.80	118.87
2	C	401	63D	OAE-SBH-OAD	-5.93	110.90	118.87
2	A	401	63D	OAE-SBH-OAD	-5.70	111.22	118.87
2	B	401	63D	CAM-CBG-SBH	-5.57	111.34	118.40
2	C	401	63D	CAL-CBD-CBG	-5.40	114.74	121.36
2	C	401	63D	CAM-CBF-CBE	-4.07	113.03	118.04
2	A	401	63D	CAL-CBE-CBF	-3.74	114.36	120.69
2	D	401	63D	OAY-CBE-CAL	-3.51	115.44	123.70
2	B	401	63D	CAL-CBE-CBF	-3.25	115.18	120.69
2	A	401	63D	CBG-CBD-CL1	-2.88	119.42	121.52
2	C	401	63D	CBG-SBH-NAB	-2.85	103.78	108.46
2	B	401	63D	CBG-SBH-NAB	-2.81	103.85	108.46
2	C	401	63D	CAU-CAT-CAS	-2.67	100.66	114.54
2	C	401	63D	CAS-CAR-CAQ	-2.66	100.71	114.54
2	C	401	63D	CAW-CBB-CAI	-2.46	115.12	120.27
2	C	401	63D	OAY-CBE-CAL	-2.36	118.14	123.70
2	D	401	63D	CAM-CBG-SBH	-2.33	115.44	118.40
2	B	401	63D	OAY-CBE-CAL	-2.31	118.27	123.70
2	D	401	63D	CAU-CAT-CAS	-2.26	102.82	114.54
2	A	401	63D	CAL-CBD-CBG	-2.25	118.60	121.36
2	D	401	63D	OAX-CAV-CAU	-2.19	99.77	108.39

Continued on next page...

Continued from previous page...

Mol	Chain	Res	Type	Atoms	Z	Observed(°)	Ideal(°)
2	B	401	63D	OAX-CAV-CAU	-2.02	100.43	108.39
2	A	401	63D	OAX-CAV-CAU	-2.01	100.50	108.39
2	D	401	63D	CBC-CAJ-CBA	2.10	120.80	118.69
2	A	401	63D	CAL-CBD-CL1	2.18	121.98	118.46
2	B	401	63D	CAV-OAX-CBC	2.19	123.88	117.90
2	A	401	63D	CAV-OAX-CBC	2.31	124.19	117.90
2	C	401	63D	CBE-CAL-CBD	2.37	125.32	119.27
2	B	401	63D	OAD-SBH-CBG	2.37	110.68	107.30
2	D	401	63D	CBD-CBG-SBH	2.58	127.10	123.26
2	C	401	63D	CAW-CBB-CAK	2.63	125.77	120.27
2	A	401	63D	OAY-CBE-CBF	2.68	120.05	116.03
2	C	401	63D	CAL-CBD-CL1	2.73	122.87	118.46
2	A	401	63D	CAW-OAY-CBE	2.74	122.87	117.83
2	C	401	63D	CAV-OAX-CBC	2.77	125.44	117.90
2	B	401	63D	OAY-CAW-CBB	2.86	117.34	109.17
2	B	401	63D	CBC-CAJ-CBA	2.98	121.68	118.69
2	C	401	63D	CBA-CAI-CBB	3.09	122.32	120.41
2	A	401	63D	OAY-CAW-CBB	3.12	118.08	109.17
2	C	401	63D	CAW-OAY-CBE	3.17	123.65	117.83
2	A	401	63D	CBC-CAJ-CBA	3.62	122.32	118.69
2	B	401	63D	CAW-OAY-CBE	4.05	125.27	117.83
2	D	401	63D	CAW-OAY-CBE	4.34	125.80	117.83
2	B	401	63D	CBF-CAM-CBG	4.71	125.93	119.25
2	D	401	63D	CBF-CAM-CBG	4.79	126.06	119.25
2	C	401	63D	OAY-CBE-CBF	4.99	123.52	116.03
2	A	401	63D	CBF-CAM-CBG	5.43	126.95	119.25
2	B	401	63D	CBD-CBG-SBH	5.51	131.47	123.26
2	B	401	63D	OAE-SBH-CBG	5.57	115.23	107.30
2	C	401	63D	CBD-CBG-SBH	5.70	131.75	123.26
2	D	401	63D	OAE-SBH-CBG	5.85	115.63	107.30
2	A	401	63D	OAE-SBH-CBG	6.03	115.88	107.30
2	B	401	63D	OAY-CBE-CBF	6.34	125.55	116.03
2	C	401	63D	OAE-SBH-CBG	6.35	116.34	107.30
2	D	401	63D	OAY-CBE-CBF	6.94	126.45	116.03
2	C	401	63D	CBF-CAM-CBG	8.36	131.11	119.25
2	A	401	63D	CBD-CBG-SBH	10.53	138.96	123.26

There are no chirality outliers.

There are no torsion outliers.

There are no ring outliers.

4 monomers are involved in 22 short contacts:

Mol	Chain	Res	Type	Clashes	Symm-Clashes
2	A	401	63D	10	0
2	B	401	63D	4	0
2	C	401	63D	5	0
2	D	401	63D	3	0

5.7 Other polymers [i](#)

There are no such residues in this entry.

5.8 Polymer linkage issues [i](#)

There are no chain breaks in this entry.

6 Fit of model and data

6.1 Protein, DNA and RNA chains

In the following table, the column labelled ‘#RSRZ> 2’ contains the number (and percentage) of RSRZ outliers, followed by percent RSRZ outliers for the chain as percentile scores relative to all X-ray entries and entries of similar resolution. The OWAB column contains the minimum, median, 95th percentile and maximum values of the occupancy-weighted average B-factor per residue. The column labelled ‘Q< 0.9’ lists the number of (and percentage) of residues with an average occupancy less than 0.9.

Mol	Chain	Analysed	<RSRZ>	#RSRZ>2	OWAB(Å ²)	Q<0.9
1	A	352/375 (93%)	-0.20	2 (0%) 90 91	20, 34, 54, 69	0
1	B	352/375 (93%)	-0.18	4 (1%) 82 83	18, 35, 55, 76	0
1	C	352/375 (93%)	-0.05	5 (1%) 78 77	26, 41, 61, 91	0
1	D	352/375 (93%)	0.07	7 (1%) 68 69	24, 44, 65, 80	0
All	All	1408/1500 (93%)	-0.09	18 (1%) 79 79	18, 39, 61, 91	0

All (18) RSRZ outliers are listed below:

Mol	Chain	Res	Type	RSRZ
1	C	34	LEU	7.8
1	C	35	ALA	5.9
1	A	293	PHE	3.5
1	A	394	THR	3.1
1	C	328	ILE	2.7
1	C	59	GLU	2.7
1	D	100	ILE	2.5
1	D	291	ASP	2.5
1	B	266	ASN	2.3
1	D	188	THR	2.3
1	D	34	LEU	2.2
1	D	172	ARG	2.2
1	D	341	CYS	2.2
1	B	36	PHE	2.1
1	D	187	ALA	2.1
1	C	36	PHE	2.1
1	B	96	LYS	2.0
1	B	34	LEU	2.0

6.2 Non-standard residues in protein, DNA, RNA chains [i](#)

There are no non-standard protein/DNA/RNA residues in this entry.

6.3 Carbohydrates [i](#)

There are no carbohydrates in this entry.

6.4 Ligands [i](#)

In the following table, the Atoms column lists the number of modelled atoms in the group and the number defined in the chemical component dictionary. LLDF column lists the quality of electron density of the group with respect to its neighbouring residues in protein, DNA or RNA chains. The B-factors column lists the minimum, median, 95th percentile and maximum values of B factors of atoms in the group. The column labelled 'Q< 0.9' lists the number of atoms with occupancy less than 0.9.

Mol	Type	Chain	Res	Atoms	RSCC	RSR	LLDF	B-factors(\AA^2)	Q<0.9
2	63D	C	401	34/34	0.81	0.39	4.42	42,67,82,95	0
2	63D	A	401	34/34	0.79	0.36	3.54	29,52,72,90	0
2	63D	B	401	34/34	0.82	0.35	3.04	38,55,79,86	0
2	63D	D	401	34/34	0.85	0.32	2.30	43,59,76,84	0

6.5 Other polymers [i](#)

There are no such residues in this entry.