



Full wwPDB X-ray Structure Validation Report ⓘ

Nov 14, 2016 – 07:20 PM EST

PDB ID : 5HOR
Title : Crystal structure of c-Met-M1250T in complex with SAR125844.
Authors : Vallee, F.; Houtmann, J.; Marquette, J.-P.
Deposited on : 2016-01-19
Resolution : 2.20 Å(reported)

This is a Full wwPDB X-ray Structure Validation Report for a publicly released PDB entry.

We welcome your comments at validation@mail.wwpdb.org

A user guide is available at

<http://wwpdb.org/validation/2016/XrayValidationReportHelp>

with specific help available everywhere you see the ⓘ symbol.

The following versions of software and data (see [references ⓘ](#)) were used in the production of this report:

MolProbity : 4.02b-467
Mogul : 1.7.1 (RC1), CSD as537be (2016)
Xtriage (Phenix) : 1.9-1692
EDS : rb-20028320
Percentile statistics : 20151230.v01 (using entries in the PDB archive December 30th 2015)
Refmac : 5.8.0135
CCP4 : 6.5.0
Ideal geometry (proteins) : Engh & Huber (2001)
Ideal geometry (DNA, RNA) : Parkinson et al. (1996)
Validation Pipeline (wwPDB-VP) : rb-20028320

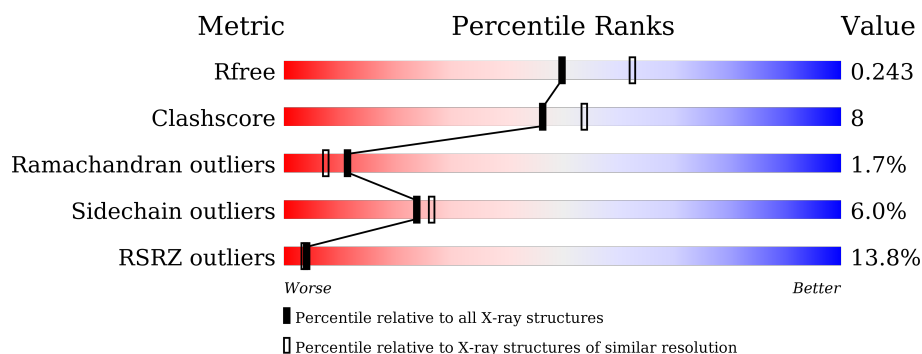
1 Overall quality at a glance

The following experimental techniques were used to determine the structure:

X-RAY DIFFRACTION

The reported resolution of this entry is 2.20 Å.

Percentile scores (ranging between 0-100) for global validation metrics of the entry are shown in the following graphic. The table shows the number of entries on which the scores are based.



Metric	Whole archive (#Entries)	Similar resolution (#Entries, resolution range(Å))
R_{free}	91344	3774 (2.20-2.20)
Clashscore	102246	4477 (2.20-2.20)
Ramachandran outliers	100387	4404 (2.20-2.20)
Sidechain outliers	100360	4405 (2.20-2.20)
RSRZ outliers	91569	3781 (2.20-2.20)

The table below summarises the geometric issues observed across the polymeric chains and their fit to the electron density. The red, orange, yellow and green segments on the lower bar indicate the fraction of residues that contain outliers for ≥ 3 , 2, 1 and 0 types of geometric quality criteria. A grey segment represents the fraction of residues that are not modelled. The numeric value for each fraction is indicated below the corresponding segment, with a dot representing fractions $\leq 5\%$. The upper red bar (where present) indicates the fraction of residues that have poor fit to the electron density. The numeric value is given above the bar.

Mol	Chain	Length	Quality of chain
1	A	312	<div> <div>11%</div> <div>65%</div> <div>12%</div> <div>•</div> <div>21%</div> </div>

The following table lists non-polymeric compounds, carbohydrate monomers and non-standard residues in protein, DNA, RNA chains that are outliers for geometric or electron-density-fit criteria:

Mol	Type	Chain	Res	Chirality	Geometry	Clashes	Electron density
2	63K	A	1401	-	-	-	X

2 Entry composition [i](#)

There are 3 unique types of molecules in this entry. The entry contains 2089 atoms, of which 0 are hydrogens and 0 are deuteriums.

In the tables below, the ZeroOcc column contains the number of atoms modelled with zero occupancy, the AltConf column contains the number of residues with at least one atom in alternate conformation and the Trace column contains the number of residues modelled with at most 2 atoms.

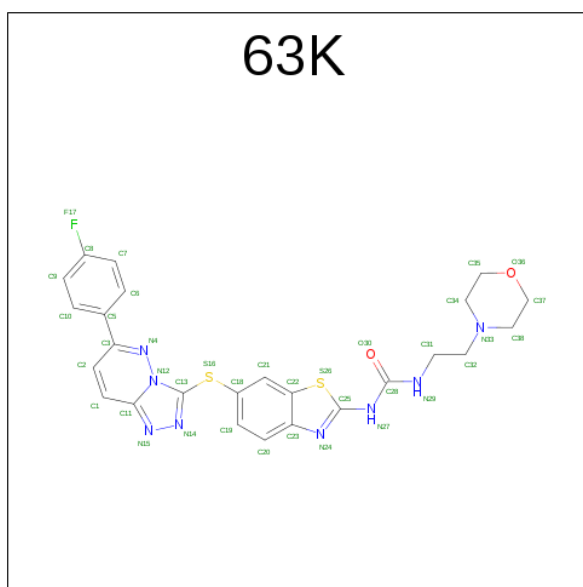
- Molecule 1 is a protein called Hepatocyte growth factor receptor.

Mol	Chain	Residues	Atoms					ZeroOcc	AltConf	Trace
			Total	C	N	O	S			
1	A	247	1956	1267	335	341	13	0	0	0

There are 4 discrepancies between the modelled and reference sequences:

Chain	Residue	Modelled	Actual	Comment	Reference
A	1194	PHE	TYR	engineered mutation	UNP P08581
A	1234	PHE	TYR	engineered mutation	UNP P08581
A	1235	ASP	TYR	engineered mutation	UNP P08581
A	1250	THR	MET	engineered mutation	UNP P08581

- Molecule 2 is 1-(6-{[6-(4-fluorophenyl)[1,2,4]triazolo[4,3-b]pyridazin-3-yl]sulfanyl}-1,3-benzothiazol-2-yl)-3-[2-(morpholin-4-yl)ethyl]urea (three-letter code: 63K) (formula: C₂₅H₂₃FN₈O₂S₂).



Mol	Chain	Residues	Atoms						ZeroOcc	AltConf
2	A	1	Total	C	F	N	O	S	0	0
			38	25	1	8	2	2		

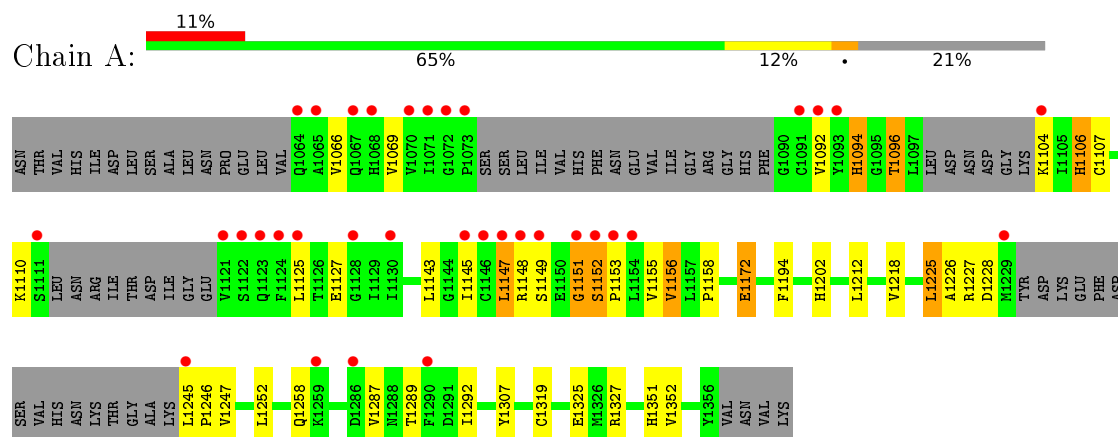
- Molecule 3 is water.

Mol	Chain	Residues	Atoms		ZeroOcc	AltConf
3	A	95	Total	O	0	0
			95	95		

3 Residue-property plots [i](#)

These plots are drawn for all protein, RNA and DNA chains in the entry. The first graphic for a chain summarises the proportions of errors displayed in the second graphic. The second graphic shows the sequence view annotated by issues in geometry and electron density. Residues are color-coded according to the number of geometric quality criteria for which they contain at least one outlier: green = 0, yellow = 1, orange = 2 and red = 3 or more. A red dot above a residue indicates a poor fit to the electron density ($RSRZ > 2$). Stretches of 2 or more consecutive residues without any outlier are shown as a green connector. Residues present in the sample, but not in the model, are shown in grey.

- Molecule 1: Hepatocyte growth factor receptor



4 Data and refinement statistics

Property	Value	Source
Space group	P 21 21 21	Depositor
Cell constants a, b, c, α , β , γ	43.02Å 46.99Å 156.62Å 90.00° 90.00° 90.00°	Depositor
Resolution (Å)	39.10 – 2.20 34.93 – 2.20	Depositor EDS
% Data completeness (in resolution range)	96.1 (39.10-2.20) 96.1 (34.93-2.20)	Depositor EDS
R_{merge}	(Not available)	Depositor
R_{sym}	(Not available)	Depositor
$\langle I/\sigma(I) \rangle$ ¹	4.01 (at 2.20Å)	Xtriage
Refinement program	BUSTER-TNT	Depositor
R, R_{free}	(Not available) , (Not available) 0.213 , 0.243	Depositor DCC
R_{free} test set	826 reflections (5.38%)	DCC
Wilson B-factor (Å ²)	28.2	Xtriage
Anisotropy	0.327	Xtriage
Bulk solvent k_{sol} (e/Å ³), B_{sol} (Å ²)	0.34 , 62.3	EDS
L-test for twinning ²	$\langle L \rangle = 0.49$, $\langle L^2 \rangle = 0.32$	Xtriage
Estimated twinning fraction	No twinning to report.	Xtriage
F_o, F_c correlation	0.92	EDS
Total number of atoms	2089	wwPDB-VP
Average B, all atoms (Å ²)	34.0	wwPDB-VP

Xtriage's analysis on translational NCS is as follows: *The largest off-origin peak in the Patterson function is 10.40% of the height of the origin peak. No significant pseudotranslation is detected.*

¹Intensities estimated from amplitudes.

²Theoretical values of $\langle |L| \rangle$, $\langle L^2 \rangle$ for acentric reflections are 0.5, 0.333 respectively for untwinned datasets, and 0.375, 0.2 for perfectly twinned datasets.

5 Model quality [i](#)

5.1 Standard geometry [i](#)

Bond lengths and bond angles in the following residue types are not validated in this section: 63K

The Z score for a bond length (or angle) is the number of standard deviations the observed value is removed from the expected value. A bond length (or angle) with $|Z| > 5$ is considered an outlier worth inspection. RMSZ is the root-mean-square of all Z scores of the bond lengths (or angles).

Mol	Chain	Bond lengths		Bond angles	
		RMSZ	$\# Z > 5$	RMSZ	$\# Z > 5$
1	A	0.69	1/2004 (0.0%)	0.71	0/2712

All (1) bond length outliers are listed below:

Mol	Chain	Res	Type	Atoms	Z	Observed(Å)	Ideal(Å)
1	A	1194	PHE	C-N	-6.02	1.20	1.34

There are no bond angle outliers.

There are no chirality outliers.

There are no planarity outliers.

5.2 Too-close contacts [i](#)

In the following table, the Non-H and H(model) columns list the number of non-hydrogen atoms and hydrogen atoms in the chain respectively. The H(added) column lists the number of hydrogen atoms added and optimized by MolProbity. The Clashes column lists the number of clashes within the asymmetric unit, whereas Symm-Clashes lists symmetry related clashes.

Mol	Chain	Non-H	H(model)	H(added)	Clashes	Symm-Clashes
1	A	1956	0	1966	29	0
2	A	38	0	0	2	0
3	A	95	0	0	1	1
All	All	2089	0	1966	30	1

The all-atom clashscore is defined as the number of clashes found per 1000 atoms (including hydrogen atoms). The all-atom clashscore for this structure is 8.

All (30) close contacts within the same asymmetric unit are listed below, sorted by their clash magnitude.

Atom-1	Atom-2	Interatomic distance (Å)	Clash overlap (Å)
1:A:1107:CYS:HB2	3:A:1585:HOH:O	1.25	1.23
1:A:1152:SER:H	1:A:1153:PRO:HA	1.19	1.06
1:A:1152:SER:N	1:A:1153:PRO:HA	1.95	0.81
1:A:1172:GLU:CD	1:A:1172:GLU:H	1.86	0.79
1:A:1152:SER:H	1:A:1153:PRO:CA	2.02	0.68
1:A:1245:LEU:N	1:A:1247:VAL:H	1.91	0.67
1:A:1110:LYS:HB3	1:A:1155:VAL:HB	1.75	0.67
1:A:1066:VAL:HG11	1:A:1125:LEU:HD22	1.85	0.59
1:A:1212:LEU:HD13	1:A:1218:VAL:HG22	1.87	0.57
2:A:1401:63K:O30	2:A:1401:63K:S26	2.64	0.56
1:A:1245:LEU:N	1:A:1247:VAL:HG23	2.21	0.55
1:A:1094:HIS:ND1	1:A:1106:HIS:HE1	2.05	0.55
1:A:1155:VAL:HG21	1:A:1225:LEU:HB3	1.89	0.54
1:A:1287:VAL:HG11	1:A:1292:ILE:HD12	1.89	0.54
1:A:1143:LEU:HG	1:A:1158:PRO:HD3	1.89	0.53
1:A:1307:TYR:OH	1:A:1351:HIS:HD2	1.93	0.51
1:A:1094:HIS:ND1	1:A:1106:HIS:CE1	2.80	0.49
1:A:1247:VAL:HG11	1:A:1289:THR:O	2.13	0.49
1:A:1147:LEU:H	1:A:1147:LEU:HD12	1.78	0.49
1:A:1152:SER:N	1:A:1153:PRO:CA	2.68	0.47
1:A:1202:HIS:O	1:A:1227:ARG:NH2	2.47	0.46
1:A:1226:ALA:HB1	2:A:1401:63K:N14	2.31	0.46
1:A:1148:ARG:HB2	1:A:1149:SER:HB3	1.98	0.46
1:A:1247:VAL:CG1	1:A:1292:ILE:HG21	2.46	0.45
1:A:1147:LEU:O	1:A:1151:GLY:N	2.45	0.45
1:A:1319:CYS:O	1:A:1327:ARG:HD3	2.18	0.44
1:A:1247:VAL:HG13	1:A:1292:ILE:HG21	2.00	0.44
1:A:1143:LEU:HB2	1:A:1156:VAL:HG23	2.03	0.40
1:A:1096:THR:HG22	1:A:1104:LYS:HB2	2.04	0.40
1:A:1069:VAL:HG12	1:A:1145:ILE:HG12	2.04	0.40

All (1) symmetry-related close contacts are listed below. The label for Atom-2 includes the symmetry operator and encoded unit-cell translations to be applied.

Atom-1	Atom-2	Interatomic distance (Å)	Clash overlap (Å)
3:A:1560:HOH:O	3:A:1580:HOH:O[4_556]	2.13	0.07

5.3 Torsion angles [i](#)

5.3.1 Protein backbone [i](#)

In the following table, the Percentiles column shows the percent Ramachandran outliers of the chain as a percentile score with respect to all X-ray entries followed by that with respect to entries of similar resolution.

The Analysed column shows the number of residues for which the backbone conformation was analysed, and the total number of residues.

Mol	Chain	Analysed	Favoured	Allowed	Outliers	Percentiles
1	A	237/312 (76%)	227 (96%)	6 (2%)	4 (2%)	11 7

All (4) Ramachandran outliers are listed below:

Mol	Chain	Res	Type
1	A	1152	SER
1	A	1094	HIS
1	A	1151	GLY
1	A	1246	PRO

5.3.2 Protein sidechains [i](#)

In the following table, the Percentiles column shows the percent sidechain outliers of the chain as a percentile score with respect to all X-ray entries followed by that with respect to entries of similar resolution.

The Analysed column shows the number of residues for which the sidechain conformation was analysed, and the total number of residues.

Mol	Chain	Analysed	Rotameric	Outliers	Percentiles
1	A	216/277 (78%)	203 (94%)	13 (6%)	24 26

All (13) residues with a non-rotameric sidechain are listed below:

Mol	Chain	Res	Type
1	A	1092	VAL
1	A	1096	THR
1	A	1106	HIS
1	A	1127	GLU
1	A	1147	LEU
1	A	1156	VAL
1	A	1172	GLU

Continued on next page...

Continued from previous page...

Mol	Chain	Res	Type
1	A	1225	LEU
1	A	1228	ASP
1	A	1252	LEU
1	A	1258	GLN
1	A	1325	GLU
1	A	1352	VAL

Some sidechains can be flipped to improve hydrogen bonding and reduce clashes. All (5) such sidechains are listed below:

Mol	Chain	Res	Type
1	A	1106	HIS
1	A	1167	ASN
1	A	1256	GLN
1	A	1304	GLN
1	A	1351	HIS

5.3.3 RNA [i](#)

There are no RNA molecules in this entry.

5.4 Non-standard residues in protein, DNA, RNA chains [i](#)

There are no non-standard protein/DNA/RNA residues in this entry.

5.5 Carbohydrates [i](#)

There are no carbohydrates in this entry.

5.6 Ligand geometry [i](#)

1 ligand is modelled in this entry.

In the following table, the Counts columns list the number of bonds (or angles) for which Mogul statistics could be retrieved, the number of bonds (or angles) that are observed in the model and the number of bonds (or angles) that are defined in the chemical component dictionary. The Link column lists molecule types, if any, to which the group is linked. The Z score for a bond length (or angle) is the number of standard deviations the observed value is removed from the expected value. A bond length (or angle) with $|Z| > 2$ is considered an outlier worth inspection. RMSZ is the root-mean-square of all Z scores of the bond lengths (or angles).

Mol	Type	Chain	Res	Link	Bond lengths			Bond angles		
					Counts	RMSZ	# Z > 2	Counts	RMSZ	# Z > 2
2	63K	A	1401	-	35,43,43	1.12	2 (5%)	39,60,60	2.13	11 (28%)

In the following table, the Chirals column lists the number of chiral outliers, the number of chiral centers analysed, the number of these observed in the model and the number defined in the chemical component dictionary. Similar counts are reported in the Torsion and Rings columns. '-' means no outliers of that kind were identified.

Mol	Type	Chain	Res	Link	Chirals	Torsions	Rings
2	63K	A	1401	-	-	0/14/26/26	0/6/6/6

All (2) bond length outliers are listed below:

Mol	Chain	Res	Type	Atoms	Z	Observed(Å)	Ideal(Å)
2	A	1401	63K	C3-N4	-3.21	1.30	1.33
2	A	1401	63K	C2-C3	4.13	1.48	1.38

All (11) bond angle outliers are listed below:

Mol	Chain	Res	Type	Atoms	Z	Observed(°)	Ideal(°)
2	A	1401	63K	C25-N27-C28	-6.29	122.25	130.14
2	A	1401	63K	C2-C3-C5	-3.70	114.00	121.90
2	A	1401	63K	C19-C20-C23	-3.29	117.23	120.86
2	A	1401	63K	C31-C32-N33	-2.81	106.15	112.88
2	A	1401	63K	C10-C5-C3	-2.70	116.85	121.30
2	A	1401	63K	C18-C21-C22	-2.20	116.17	120.17
2	A	1401	63K	C7-C6-C5	-2.20	118.05	121.15
2	A	1401	63K	C6-C5-C10	2.41	122.28	117.56
2	A	1401	63K	C22-C23-N24	2.65	114.26	108.12
2	A	1401	63K	C38-N33-C34	2.85	115.26	108.87
2	A	1401	63K	C2-C3-N4	5.07	126.55	121.58

There are no chirality outliers.

There are no torsion outliers.

There are no ring outliers.

1 monomer is involved in 2 short contacts:

Mol	Chain	Res	Type	Clashes	Symm-Clashes
2	A	1401	63K	2	0

5.7 Other polymers [i](#)

There are no such residues in this entry.

5.8 Polymer linkage issues [i](#)

The following chains have linkage breaks:

Mol	Chain	Number of breaks
1	A	1

All chain breaks are listed below:

Model	Chain	Residue-1	Atom-1	Residue-2	Atom-2	Distance (Å)
1	A	1194:PHE	C	1195:LEU	N	1.20

6 Fit of model and data

6.1 Protein, DNA and RNA chains

In the following table, the column labelled ‘#RSRZ> 2’ contains the number (and percentage) of RSRZ outliers, followed by percent RSRZ outliers for the chain as percentile scores relative to all X-ray entries and entries of similar resolution. The OWAB column contains the minimum, median, 95th percentile and maximum values of the occupancy-weighted average B-factor per residue. The column labelled ‘Q< 0.9’ lists the number of (and percentage) of residues with an average occupancy less than 0.9.

Mol	Chain	Analysed	<RSRZ>	#RSRZ>2	OWAB(Å ²)	Q<0.9
1	A	247/312 (79%)	0.37	34 (13%) 4 3	11, 26, 77, 94	0

All (34) RSRZ outliers are listed below:

Mol	Chain	Res	Type	RSRZ
1	A	1147	LEU	10.2
1	A	1148	ARG	6.8
1	A	1091	CYS	5.8
1	A	1070	VAL	5.6
1	A	1068	HIS	5.1
1	A	1290	PHE	5.1
1	A	1149	SER	4.9
1	A	1073	PRO	4.6
1	A	1145	ILE	4.6
1	A	1071	ILE	4.2
1	A	1067	GLN	4.2
1	A	1122	SER	4.1
1	A	1151	GLY	4.0
1	A	1229	MET	3.8
1	A	1072	GLY	3.7
1	A	1124	PHE	3.7
1	A	1123	GLN	3.5
1	A	1245	LEU	3.4
1	A	1153	PRO	3.3
1	A	1064	GLN	3.3
1	A	1125	LEU	3.2
1	A	1146	CYS	3.1
1	A	1111	SER	3.0
1	A	1128	GLY	2.8
1	A	1104	LYS	2.7
1	A	1286	ASP	2.6
1	A	1259	LYS	2.5

Continued on next page...

Continued from previous page...

Mol	Chain	Res	Type	RSRZ
1	A	1092	VAL	2.4
1	A	1065	ALA	2.3
1	A	1152	SER	2.3
1	A	1121	VAL	2.3
1	A	1093	TYR	2.2
1	A	1154	LEU	2.2
1	A	1130	ILE	2.2

6.2 Non-standard residues in protein, DNA, RNA chains [i](#)

There are no non-standard protein/DNA/RNA residues in this entry.

6.3 Carbohydrates [i](#)

There are no carbohydrates in this entry.

6.4 Ligands [i](#)

In the following table, the Atoms column lists the number of modelled atoms in the group and the number defined in the chemical component dictionary. LLDF column lists the quality of electron density of the group with respect to its neighbouring residues in protein, DNA or RNA chains. The B-factors column lists the minimum, median, 95th percentile and maximum values of B factors of atoms in the group. The column labelled 'Q< 0.9' lists the number of atoms with occupancy less than 0.9.

Mol	Type	Chain	Res	Atoms	RSCC	RSR	LLDF	B-factors(\AA^2)	Q<0.9
2	63K	A	1401	38/38	0.84	0.22	2.26	63,67,76,76	0

6.5 Other polymers [i](#)

There are no such residues in this entry.