



# Full wwPDB X-ray Structure Validation Report ⓘ

Feb 1, 2016 – 05:18 PM GMT

PDB ID : 4HVS  
Title : Crystal structure of KIT kinase domain with a small molecule inhibitor, PLX647  
Authors : Zhang, Y.; Zhang, C.  
Deposited on : 2012-11-06  
Resolution : 1.90 Å(reported)

This is a Full wwPDB X-ray Structure Validation Report for a publicly released PDB entry.  
We welcome your comments at [validation@mail.wwpdb.org](mailto:validation@mail.wwpdb.org)  
A user guide is available at  
<http://wwpdb.org/validation/2016/XrayValidationReportHelp>  
with specific help available everywhere you see the ⓘ symbol.

---

The following versions of software and data (see [references ⓘ](#)) were used in the production of this report:

MolProbity : 4.02b-467  
Mogul : 1.7 (RC4), CSD as536be (2015)  
Xtriage (Phenix) : 1.9-1692  
EDS : rb-20026688  
Percentile statistics : 20151230.v01 (using entries in the PDB archive December 30th 2015)  
Refmac : 5.8.0135  
CCP4 : 6.5.0  
Ideal geometry (proteins) : Engh & Huber (2001)  
Ideal geometry (DNA, RNA) : Parkinson et al. (1996)  
Validation Pipeline (wwPDB-VP) : trunk26865

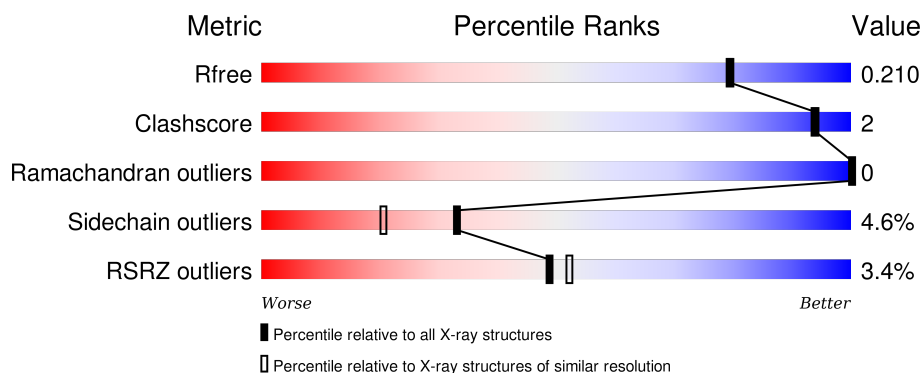
# 1 Overall quality at a glance

The following experimental techniques were used to determine the structure:

## *X-RAY DIFFRACTION*


The reported resolution of this entry is 1.90 Å.

Percentile scores (ranging between 0-100) for global validation metrics of the entry are shown in the following graphic. The table shows the number of entries on which the scores are based.



Metric	Whole archive (#Entries)	Similar resolution (#Entries, resolution range(Å))
$R_{free}$	91344	4755 (1.90-1.90)
Clashscore	102246	5398 (1.90-1.90)
Ramachandran outliers	100387	5338 (1.90-1.90)
Sidechain outliers	100360	5339 (1.90-1.90)
RSRZ outliers	91569	4766 (1.90-1.90)

The table below summarises the geometric issues observed across the polymeric chains and their fit to the electron density. The red, orange, yellow and green segments on the lower bar indicate the fraction of residues that contain outliers for  $\geq 3$ , 2, 1 and 0 types of geometric quality criteria. A grey segment represents the fraction of residues that are not modelled. The numeric value for each fraction is indicated below the corresponding segment, with a dot representing fractions  $\leq 5\%$ . The upper red bar (where present) indicates the fraction of residues that have poor fit to the electron density. The numeric value is given above the bar.

Mol	Chain	Length	Quality of chain
1	A	335	

## 2 Entry composition

There are 3 unique types of molecules in this entry. The entry contains 2728 atoms, of which 0 are hydrogens and 0 are deuteriums.

In the tables below, the ZeroOcc column contains the number of atoms modelled with zero occupancy, the AltConf column contains the number of residues with at least one atom in alternate conformation and the Trace column contains the number of residues modelled with at most 2 atoms.

- Molecule 1 is a protein called Mast/stem cell growth factor receptor Kit.

Mol	Chain	Residues	Atoms					ZeroOcc	AltConf	Trace
1	A	326	Total	C	N	O	S	0	0	0
			2592	1647	435	491	19			

There are 79 discrepancies between the modelled and reference sequences:

Chain	Residue	Modelled	Actual	Comment	Reference
A	542	MET	-	EXPRESSION TAG	UNP P10721
A	543	GLY	-	EXPRESSION TAG	UNP P10721
A	544	HIS	-	EXPRESSION TAG	UNP P10721
A	545	HIS	-	EXPRESSION TAG	UNP P10721
A	546	HIS	-	EXPRESSION TAG	UNP P10721
A	547	HIS	-	EXPRESSION TAG	UNP P10721
A	548	HIS	-	EXPRESSION TAG	UNP P10721
A	549	HIS	-	EXPRESSION TAG	UNP P10721
A	550	MET	-	EXPRESSION TAG	UNP P10721
A	563	SER	ILE	ENGINEERED MUTATION	UNP P10721
A	569	SER	VAL	ENGINEERED MUTATION	UNP P10721
A	609	GLN	TYR	ENGINEERED MUTATION	UNP P10721
A	631	SER	LEU	ENGINEERED MUTATION	UNP P10721
A	651	GLU	MET	ENGINEERED MUTATION	UNP P10721
A	662	HIS	ILE	ENGINEERED MUTATION	UNP P10721
A	690	HIS	ILE	ENGINEERED MUTATION	UNP P10721
A	691	SER	CYS	ENGINEERED MUTATION	UNP P10721
A	693	ASP	LYS	ENGINEERED MUTATION	UNP P10721
A	694	THR	GLN	ENGINEERED MUTATION	UNP P10721
A	753	SER	GLU	ENGINEERED MUTATION	UNP P10721
A	?	-	ASP	DELETION	UNP P10721
A	?	-	HIS	DELETION	UNP P10721
A	?	-	ALA	DELETION	UNP P10721
A	?	-	GLU	DELETION	UNP P10721
A	?	-	ALA	DELETION	UNP P10721
A	?	-	ALA	DELETION	UNP P10721
A	?	-	LEU	DELETION	UNP P10721

*Continued on next page...*

*Continued from previous page...*

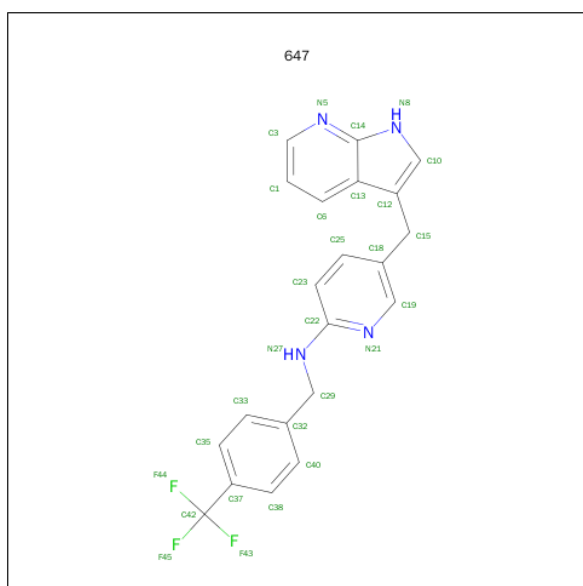
Chain	Residue	Modelled	Actual	Comment	Reference
A	?	-	TYR	DELETION	UNP P10721
A	?	-	LYS	DELETION	UNP P10721
A	?	-	ASN	DELETION	UNP P10721
A	?	-	LEU	DELETION	UNP P10721
A	?	-	LEU	DELETION	UNP P10721
A	?	-	LYS	DELETION	UNP P10721
A	?	-	GLU	DELETION	UNP P10721
A	?	-	SER	DELETION	UNP P10721
A	?	-	SER	DELETION	UNP P10721
A	?	-	CYS	DELETION	UNP P10721
A	?	-	SER	DELETION	UNP P10721
A	?	-	THR	DELETION	UNP P10721
A	?	-	ASN	DELETION	UNP P10721
A	?	-	GLU	DELETION	UNP P10721
A	?	-	TYR	DELETION	UNP P10721
A	?	-	MET	DELETION	UNP P10721
A	?	-	ASP	DELETION	UNP P10721
A	?	-	MET	DELETION	UNP P10721
A	?	-	LYS	DELETION	UNP P10721
A	?	-	PRO	DELETION	UNP P10721
A	?	-	GLY	DELETION	UNP P10721
A	?	-	VAL	DELETION	UNP P10721
A	?	-	SER	DELETION	UNP P10721
A	?	-	TYR	DELETION	UNP P10721
A	?	-	VAL	DELETION	UNP P10721
A	?	-	VAL	DELETION	UNP P10721
A	?	-	PRO	DELETION	UNP P10721
A	?	-	LYS	DELETION	UNP P10721
A	?	-	ALA	DELETION	UNP P10721
A	?	-	ASP	DELETION	UNP P10721
A	?	-	LYS	DELETION	UNP P10721
A	?	-	ARG	DELETION	UNP P10721
A	?	-	ARG	DELETION	UNP P10721
A	?	-	SER	DELETION	UNP P10721
A	?	-	VAL	DELETION	UNP P10721
A	?	-	ARG	DELETION	UNP P10721
A	?	-	ILE	DELETION	UNP P10721
A	?	-	GLY	DELETION	UNP P10721
A	?	-	TYR	DELETION	UNP P10721
A	?	-	ILE	DELETION	UNP P10721
A	?	-	GLU	DELETION	UNP P10721
A	?	-	ARG	DELETION	UNP P10721

*Continued on next page...*

Continued from previous page...

Chain	Residue	Modelled	Actual	Comment	Reference
A	?	-	ASP	DELETION	UNP P10721
A	?	-	VAL	DELETION	UNP P10721
A	?	-	THR	DELETION	UNP P10721
A	756	SER	ILE	ENGINEERED MUTATION	UNP P10721
A	762	ASN	LEU	ENGINEERED MUTATION	UNP P10721
A	825	ASP	VAL	ENGINEERED MUTATION	UNP P10721
A	844	SER	CYS	ENGINEERED MUTATION	UNP P10721
A	890	SER	LEU	ENGINEERED MUTATION	UNP P10721
A	912	ASP	LEU	ENGINEERED MUTATION	UNP P10721
A	923	ASP	LEU	ENGINEERED MUTATION	UNP P10721

- Molecule 2 is 5-(1H-PYRROLO[2,3-B]PYRIDIN-3-YLMETHYL)-N-[4-(TRIFLUOROMETHYL)BENZYL]PYRIDIN-2-AMINE (three-letter code: 647) (formula: C<sub>21</sub>H<sub>17</sub>F<sub>3</sub>N<sub>4</sub>).



Mol	Chain	Residues	Atoms				ZeroOcc	AltConf
2	A	1	Total	C	F	N	0	0
			28	21	3	4		

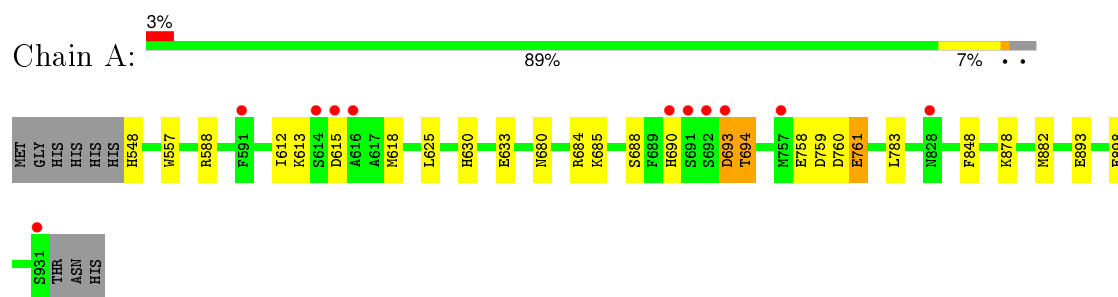
- Molecule 3 is water.

Mol	Chain	Residues	Atoms		ZeroOcc	AltConf
3	A	108	Total	O	0	0
			108	108		

### 3 Residue-property plots

These plots are drawn for all protein, RNA and DNA chains in the entry. The first graphic for a chain summarises the proportions of errors displayed in the second graphic. The second graphic shows the sequence view annotated by issues in geometry and electron density. Residues are color-coded according to the number of geometric quality criteria for which they contain at least one outlier: green = 0, yellow = 1, orange = 2 and red = 3 or more. A red dot above a residue indicates a poor fit to the electron density ( $\text{RSRZ} > 2$ ). Stretches of 2 or more consecutive residues without any outlier are shown as a green connector. Residues present in the sample, but not in the model, are shown in grey.

- Molecule 1: Mast/stem cell growth factor receptor Kit



## 4 Data and refinement statistics

Property	Value	Source
Space group	C 1 2 1	Depositor
Cell constants a, b, c, $\alpha$ , $\beta$ , $\gamma$	110.73 Å   81.86 Å   50.05 Å 90.00°   107.81°   90.00°	Depositor
Resolution (Å)	52.70 – 1.90 64.66 – 1.85	Depositor EDS
% Data completeness (in resolution range)	98.9 (52.70-1.90) 98.8 (64.66-1.85)	Depositor EDS
$R_{merge}$	(Not available)	Depositor
$R_{sym}$	(Not available)	Depositor
$\langle I/\sigma(I) \rangle$ <sup>1</sup>	1.65 (at 1.86 Å)	Xtriage
Refinement program	PHENIX (phenix.refine: 1.7.3_928)	Depositor
R, $R_{free}$	0.199   ,   0.227 0.201   ,   0.210	Depositor DCC
$R_{free}$ test set	1665 reflections (5.28%)	DCC
Wilson B-factor (Å <sup>2</sup> )	30.4	Xtriage
Anisotropy	0.143	Xtriage
Bulk solvent $k_{sol}$ (e/Å <sup>3</sup> ), $B_{sol}$ (Å <sup>2</sup> )	0.39 , 44.6	EDS
Estimated twinning fraction	No twinning to report.	Xtriage
L-test for twinning <sup>2</sup>	$\langle  L  \rangle = 0.50$ , $\langle L^2 \rangle = 0.33$	Xtriage
Outliers	1 of 35908 reflections (0.003%)	Xtriage
$F_o, F_c$ correlation	0.96	EDS
Total number of atoms	2728	wwPDB-VP
Average B, all atoms (Å <sup>2</sup> )	32.0	wwPDB-VP

Xtriage's analysis on translational NCS is as follows: *The largest off-origin peak in the Patterson function is 5.69% of the height of the origin peak. No significant pseudotranslation is detected.*

<sup>1</sup>Intensities estimated from amplitudes.

<sup>2</sup>Theoretical values of  $\langle |L| \rangle$ ,  $\langle L^2 \rangle$  for acentric reflections are 0.5, 0.375 respectively for untwinned datasets, and 0.333, 0.2 for perfectly twinned datasets.

## 5 Model quality [i](#)

### 5.1 Standard geometry [i](#)

Bond lengths and bond angles in the following residue types are not validated in this section: 647

The Z score for a bond length (or angle) is the number of standard deviations the observed value is removed from the expected value. A bond length (or angle) with  $|Z| > 5$  is considered an outlier worth inspection. RMSZ is the root-mean-square of all Z scores of the bond lengths (or angles).

Mol	Chain	Bond lengths		Bond angles	
		RMSZ	$\# Z  > 5$	RMSZ	$\# Z  > 5$
1	A	0.68	1/2658 (0.0%)	0.70	1/3596 (0.0%)

Chiral center outliers are detected by calculating the chiral volume of a chiral center and verifying if the center is modelled as a planar moiety or with the opposite hand. A planarity outlier is detected by checking planarity of atoms in a peptide group, atoms in a mainchain group or atoms of a sidechain that are expected to be planar.

Mol	Chain	#Chirality outliers	#Planarity outliers
1	A	0	1

All (1) bond length outliers are listed below:

Mol	Chain	Res	Type	Atoms	Z	Observed(Å)	Ideal(Å)
1	A	680	ASN	CB-CG	5.63	1.64	1.51

All (1) bond angle outliers are listed below:

Mol	Chain	Res	Type	Atoms	Z	Observed(°)	Ideal(°)
1	A	693	ASP	CB-CG-OD2	-5.04	113.77	118.30

There are no chirality outliers.

All (1) planarity outliers are listed below:

Mol	Chain	Res	Type	Group
1	A	588	ARG	Sidechain



## 5.2 Too-close contacts ⓘ

In the following table, the Non-H and H(model) columns list the number of non-hydrogen atoms and hydrogen atoms in the chain respectively. The H(added) column lists the number of hydrogen atoms added and optimized by MolProbity. The Clashes column lists the number of clashes within the asymmetric unit, whereas Symm-Clashes lists symmetry related clashes.

Mol	Chain	Non-H	H(model)	H(added)	Clashes	Symm-Clashes
1	A	2592	0	2516	9	0
2	A	28	0	17	0	0
3	A	108	0	0	1	0
All	All	2728	0	2533	9	0

The all-atom clashscore is defined as the number of clashes found per 1000 atoms (including hydrogen atoms). The all-atom clashscore for this structure is 2.

All (9) close contacts within the same asymmetric unit are listed below, sorted by their clash magnitude.

Atom-1	Atom-2	Interatomic distance (Å)	Clash overlap (Å)
1:A:878:LYS:HG2	1:A:882:MET:HE2	1.78	0.66
1:A:759:ASP:OD1	1:A:761:GLU:HG3	1.98	0.64
1:A:548:HIS:CD2	1:A:630:HIS:HD1	2.19	0.61
1:A:690:HIS:CE1	1:A:694:THR:HG22	2.36	0.60
1:A:684:ARG:NH1	1:A:685:LYS:HE2	2.20	0.57
1:A:612:ILE:HG13	1:A:618:MET:SD	2.51	0.50
1:A:548:HIS:HD2	1:A:633:GLU:OE1	1.96	0.48
1:A:848:PHE:HB3	3:A:1148:HOH:O	2.17	0.43
1:A:548:HIS:NE2	1:A:630:HIS:ND1	2.62	0.43

There are no symmetry-related clashes.

## 5.3 Torsion angles ⓘ

### 5.3.1 Protein backbone ⓘ

In the following table, the Percentiles column shows the percent Ramachandran outliers of the chain as a percentile score with respect to all X-ray entries followed by that with respect to entries of similar resolution.

The Analysed column shows the number of residues for which the backbone conformation was analysed, and the total number of residues.

Mol	Chain	Analysed	Favoured	Allowed	Outliers	Percentiles	
1	A	324/335 (97%)	318 (98%)	6 (2%)	0	100	100

There are no Ramachandran outliers to report.

### 5.3.2 Protein sidechains ⓘ

In the following table, the Percentiles column shows the percent sidechain outliers of the chain as a percentile score with respect to all X-ray entries followed by that with respect to entries of similar resolution.

The Analysed column shows the number of residues for which the sidechain conformation was analysed, and the total number of residues.

Mol	Chain	Analysed	Rotameric	Outliers	Percentiles	
1	A	284/292 (97%)	271 (95%)	13 (5%)	33	21

All (13) residues with a non-rotameric sidechain are listed below:

Mol	Chain	Res	Type
1	A	557	TRP
1	A	613	LYS
1	A	615	ASP
1	A	625	LEU
1	A	688	SER
1	A	693	ASP
1	A	694	THR
1	A	758	GLU
1	A	760	ASP
1	A	761	GLU
1	A	783	LEU
1	A	893	GLU
1	A	898	GLU

Some sidechains can be flipped to improve hydrogen bonding and reduce clashes. All (1) such sidechains are listed below:

Mol	Chain	Res	Type
1	A	690	HIS

### 5.3.3 RNA ⓘ

There are no RNA molecules in this entry.

## 5.4 Non-standard residues in protein, DNA, RNA chains ⓘ

There are no non-standard protein/DNA/RNA residues in this entry.

## 5.5 Carbohydrates ⓘ

There are no carbohydrates in this entry.

## 5.6 Ligand geometry ⓘ

1 ligand is modelled in this entry.

In the following table, the Counts columns list the number of bonds (or angles) for which Mogul statistics could be retrieved, the number of bonds (or angles) that are observed in the model and the number of bonds (or angles) that are defined in the chemical component dictionary. The Link column lists molecule types, if any, to which the group is linked. The Z score for a bond length (or angle) is the number of standard deviations the observed value is removed from the expected value. A bond length (or angle) with  $|Z| > 2$  is considered an outlier worth inspection. RMSZ is the root-mean-square of all Z scores of the bond lengths (or angles).

Mol	Type	Chain	Res	Link	Bond lengths			Bond angles		
					Counts	RMSZ	$\# Z  > 2$	Counts	RMSZ	$\# Z  > 2$
2	647	A	1001	-	30,31,31	1.04	3 (10%)	35,44,44	1.54	7 (20%)

In the following table, the Chirals column lists the number of chiral outliers, the number of chiral centers analysed, the number of these observed in the model and the number defined in the chemical component dictionary. Similar counts are reported in the Torsion and Rings columns. '-' means no outliers of that kind were identified.

Mol	Type	Chain	Res	Link	Chirals	Torsions	Rings
2	647	A	1001	-	-	0/14/15/15	0/4/4/4

All (3) bond length outliers are listed below:

Mol	Chain	Res	Type	Atoms	Z	Observed(Å)	Ideal(Å)
2	A	1001	647	C22-N21	2.10	1.38	1.34
2	A	1001	647	C1-C6	2.27	1.41	1.36
2	A	1001	647	C3-N5	2.35	1.37	1.32

All (7) bond angle outliers are listed below:

Mol	Chain	Res	Type	Atoms	Z	Observed(°)	Ideal(°)
2	A	1001	647	C29-N27-C22	-4.29	117.13	122.90

*Continued on next page...*

*Continued from previous page...*

Mol	Chain	Res	Type	Atoms	Z	Observed(°)	Ideal(°)
2	A	1001	647	C29-C32-C40	-2.68	114.94	120.90
2	A	1001	647	C40-C38-C37	-2.32	118.19	121.26
2	A	1001	647	F44-C42-C37	-2.07	108.53	112.95
2	A	1001	647	F43-C42-C37	2.32	117.92	112.95
2	A	1001	647	C35-C37-C38	2.45	121.62	117.94
2	A	1001	647	C32-C29-N27	3.59	122.06	113.73

There are no chirality outliers.

There are no torsion outliers.

There are no ring outliers.

No monomer is involved in short contacts.

## 5.7 Other polymers [i](#)

There are no such residues in this entry.

## 5.8 Polymer linkage issues [i](#)

There are no chain breaks in this entry.

## 6 Fit of model and data [i](#)

### 6.1 Protein, DNA and RNA chains [i](#)

In the following table, the column labelled ‘#RSRZ> 2’ contains the number (and percentage) of RSRZ outliers, followed by percent RSRZ outliers for the chain as percentile scores relative to all X-ray entries and entries of similar resolution. The OWAB column contains the minimum, median, 95<sup>th</sup> percentile and maximum values of the occupancy-weighted average B-factor per residue. The column labelled ‘Q< 0.9’ lists the number of (and percentage) of residues with an average occupancy less than 0.9.

Mol	Chain	Analysed	<RSRZ>	#RSRZ>2		OWAB(Å <sup>2</sup> )	Q<0.9
1	A	326/335 (97%)	0.06	11 (3%)	49 52	19, 30, 51, 69	7 (2%)

All (11) RSRZ outliers are listed below:

Mol	Chain	Res	Type	RSRZ
1	A	615	ASP	4.3
1	A	690	HIS	3.8
1	A	931	SER	3.1
1	A	692	SER	2.3
1	A	616	ALA	2.2
1	A	591	PHE	2.2
1	A	614	SER	2.2
1	A	757	MET	2.2
1	A	693	ASP	2.1
1	A	828	ASN	2.1
1	A	691	SER	2.1

### 6.2 Non-standard residues in protein, DNA, RNA chains [i](#)

There are no non-standard protein/DNA/RNA residues in this entry.

### 6.3 Carbohydrates [i](#)

There are no carbohydrates in this entry.

### 6.4 Ligands [i](#)

In the following table, the Atoms column lists the number of modelled atoms in the group and the number defined in the chemical component dictionary. LLDF column lists the quality of electron density of the group with respect to its neighbouring residues in protein, DNA or RNA chains.

The B-factors column lists the minimum, median, 95<sup>th</sup> percentile and maximum values of B factors of atoms in the group. The column labelled 'Q< 0.9' lists the number of atoms with occupancy less than 0.9.

Mol	Type	Chain	Res	Atoms	RSCC	RSR	LLDF	B-factors( $\text{\AA}^2$ )	Q<0.9
2	647	A	1001	28/28	0.95	0.10	-0.20	19,22,25,26	0

## 6.5 Other polymers [i](#)

There are no such residues in this entry.