



# Full wwPDB X-ray Structure Validation Report ⓘ

May 9, 2016 – 07:08 PM EDT

PDB ID : 5HVJ  
Title : Crystal structure of LIMK1 D460N mutant in complex with AMP-PNP  
Authors : Hamill, S.; Boggon, T.J.  
Deposited on : 2016-01-28  
Resolution : 2.20 Å(reported)

This is a Full wwPDB X-ray Structure Validation Report for a publicly released PDB entry.  
We welcome your comments at [validation@mail.wwpdb.org](mailto:validation@mail.wwpdb.org)  
A user guide is available at  
<http://wwpdb.org/validation/2016/XrayValidationReportHelp>  
with specific help available everywhere you see the ⓘ symbol.

---

The following versions of software and data (see [references ⓘ](#)) were used in the production of this report:

MolProbity : 4.02b-467  
Mogul : 1.7.1 (RC1), CSD as537be (2016)  
Xtriage (Phenix) : 1.9-1692  
EDS : rb-20027457  
Percentile statistics : 20151230.v01 (using entries in the PDB archive December 30th 2015)  
Refmac : 5.8.0135  
CCP4 : 6.5.0  
Ideal geometry (proteins) : Engh & Huber (2001)  
Ideal geometry (DNA, RNA) : Parkinson et al. (1996)  
Validation Pipeline (wwPDB-VP) : rb-20027457

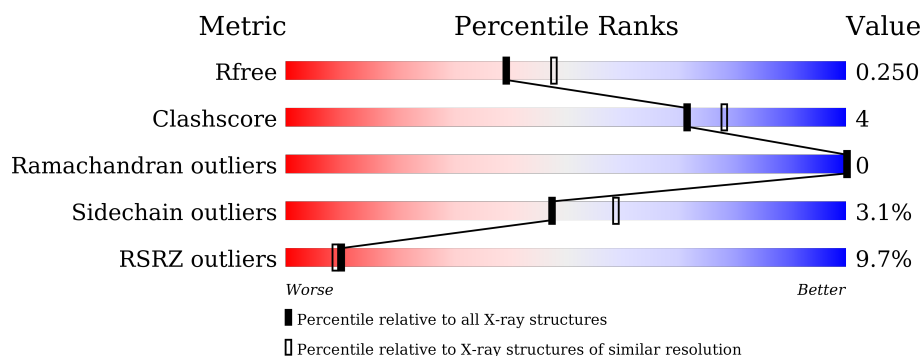
# 1 Overall quality at a glance

The following experimental techniques were used to determine the structure:

## *X-RAY DIFFRACTION*

The reported resolution of this entry is 2.20 Å.

Percentile scores (ranging between 0-100) for global validation metrics of the entry are shown in the following graphic. The table shows the number of entries on which the scores are based.



Metric	Whole archive (#Entries)	Similar resolution (#Entries, resolution range(Å))
$R_{free}$	91344	3774 (2.20-2.20)
Clashscore	102246	4477 (2.20-2.20)
Ramachandran outliers	100387	4404 (2.20-2.20)
Sidechain outliers	100360	4405 (2.20-2.20)
RSRZ outliers	91569	3781 (2.20-2.20)

The table below summarises the geometric issues observed across the polymeric chains and their fit to the electron density. The red, orange, yellow and green segments on the lower bar indicate the fraction of residues that contain outliers for  $\geq 3$ , 2, 1 and 0 types of geometric quality criteria. A grey segment represents the fraction of residues that are not modelled. The numeric value for each fraction is indicated below the corresponding segment, with a dot representing fractions  $\leq 5\%$ . The upper red bar (where present) indicates the fraction of residues that have poor fit to the electron density. The numeric value is given above the bar.

Mol	Chain	Length	Quality of chain
1	A	315	 4% 78% 10% • 10%
1	B	315	 13% 77% 11% • 10%

The following table lists non-polymeric compounds, carbohydrate monomers and non-standard residues in protein, DNA, RNA chains that are outliers for geometric or electron-density-fit criteria:

Mol	Type	Chain	Res	Chirality	Geometry	Clashes	Electron density
2	ANP	A	1000	-	-	-	X

## 2 Entry composition

There are 3 unique types of molecules in this entry. The entry contains 4720 atoms, of which 0 are hydrogens and 0 are deuteriums.

In the tables below, the ZeroOcc column contains the number of atoms modelled with zero occupancy, the AltConf column contains the number of residues with at least one atom in alternate conformation and the Trace column contains the number of residues modelled with at most 2 atoms.

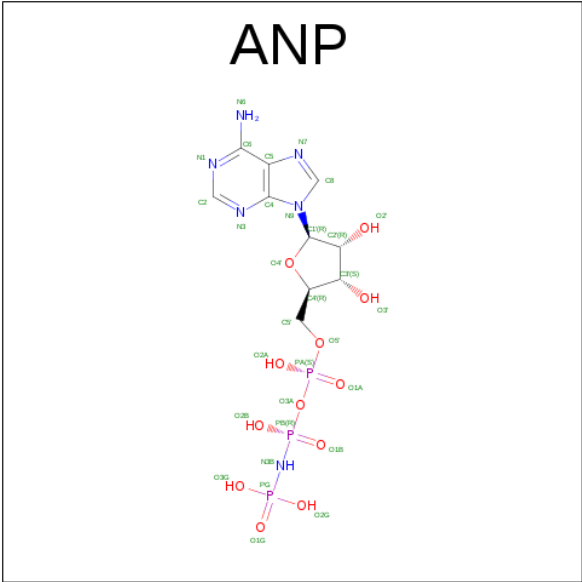
- Molecule 1 is a protein called LIM domain kinase 1.

Mol	Chain	Residues	Atoms					ZeroOcc	AltConf	Trace
1	A	283	Total	C	N	O	S	0	4	0
			2325	1490	414	402	19			
1	B	284	Total	C	N	O	S	0	0	0
			2306	1475	411	402	18			

There are 12 discrepancies between the modelled and reference sequences:

Chain	Residue	Modelled	Actual	Comment	Reference
A	324	GLY	-	expression tag	UNP P53667
A	325	ALA	-	expression tag	UNP P53667
A	326	MET	-	expression tag	UNP P53667
A	327	GLY	-	expression tag	UNP P53667
A	328	SER	-	expression tag	UNP P53667
A	460	ASN	ASP	engineered mutation	UNP P53667
B	324	GLY	-	expression tag	UNP P53667
B	325	ALA	-	expression tag	UNP P53667
B	326	MET	-	expression tag	UNP P53667
B	327	GLY	-	expression tag	UNP P53667
B	328	SER	-	expression tag	UNP P53667
B	460	ASN	ASP	engineered mutation	UNP P53667

- Molecule 2 is PHOSPHOAMINOPHOSPHONIC ACID-ADENYLATE ESTER (three-letter code: ANP) (formula: C<sub>10</sub>H<sub>17</sub>N<sub>6</sub>O<sub>12</sub>P<sub>3</sub>).



Mol	Chain	Residues	Atoms				ZeroOcc	AltConf
2	A	1	Total	C	N	O	0	0
			19	10	5	4		

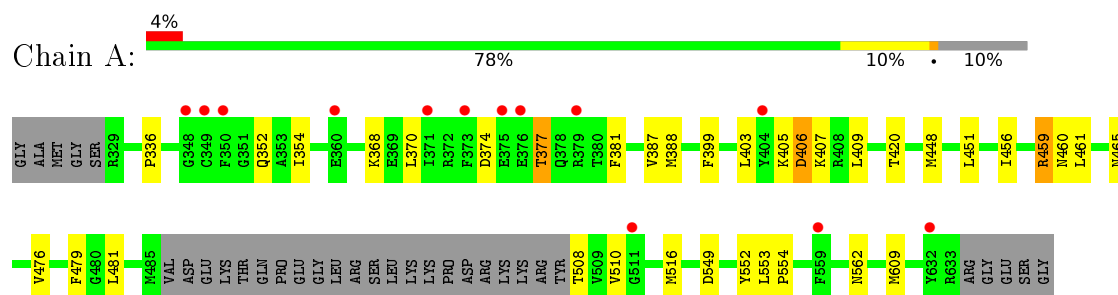
- Molecule 3 is water.

Mol	Chain	Residues	Atoms		ZeroOcc	AltConf
3	A	40	Total	O	0	0
			40	40		
3	B	30	Total	O	0	0
			30	30		

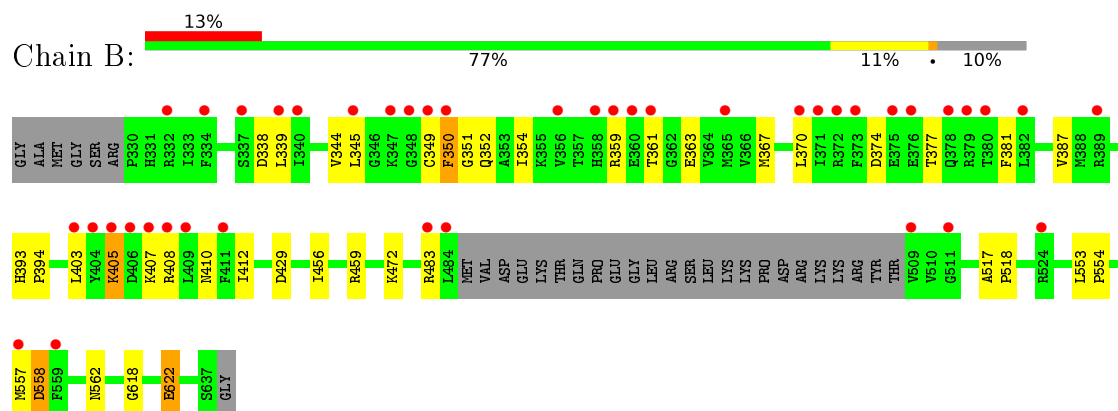
### 3 Residue-property plots [i](#)

These plots are drawn for all protein, RNA and DNA chains in the entry. The first graphic for a chain summarises the proportions of errors displayed in the second graphic. The second graphic shows the sequence view annotated by issues in geometry and electron density. Residues are color-coded according to the number of geometric quality criteria for which they contain at least one outlier: green = 0, yellow = 1, orange = 2 and red = 3 or more. A red dot above a residue indicates a poor fit to the electron density ( $RSRZ > 2$ ). Stretches of 2 or more consecutive residues without any outlier are shown as a green connector. Residues present in the sample, but not in the model, are shown in grey.

- Molecule 1: LIM domain kinase 1



- Molecule 1: LIM domain kinase 1



## 4 Data and refinement statistics

Property	Value	Source
Space group	P 1 21 1	Depositor
Cell constants a, b, c, $\alpha$ , $\beta$ , $\gamma$	54.99Å 59.57Å 98.28Å 90.00° 101.28° 90.00°	Depositor
Resolution (Å)	39.98 – 2.20 48.19 – 2.19	Depositor EDS
% Data completeness (in resolution range)	99.8 (39.98-2.20) 87.1 (48.19-2.19)	Depositor EDS
$R_{merge}$	0.16	Depositor
$R_{sym}$	(Not available)	Depositor
$\langle I/\sigma(I) \rangle$ <sup>1</sup>	1.53 (at 2.20Å)	Xtriage
Refinement program	PHENIX (phenix.refine: dev_1819)	Depositor
R, $R_{free}$	0.206 , 0.252 0.197 , 0.250	Depositor DCC
$R_{free}$ test set	1395 reflections (4.99%)	DCC
Wilson B-factor (Å <sup>2</sup> )	40.2	Xtriage
Anisotropy	0.374	Xtriage
Bulk solvent $k_{sol}$ (e/Å <sup>3</sup> ), $B_{sol}$ (Å <sup>2</sup> )	0.36 , 59.9	EDS
L-test for twinning <sup>2</sup>	$\langle  L  \rangle = 0.48$ , $\langle L^2 \rangle = 0.31$	Xtriage
Estimated twinning fraction	No twinning to report.	Xtriage
$F_o, F_c$ correlation	0.96	EDS
Total number of atoms	4720	wwPDB-VP
Average B, all atoms (Å <sup>2</sup> )	75.0	wwPDB-VP

Xtriage's analysis on translational NCS is as follows: *The largest off-origin peak in the Patterson function is 5.17% of the height of the origin peak. No significant pseudotranslation is detected.*

<sup>1</sup>Intensities estimated from amplitudes.

<sup>2</sup>Theoretical values of  $\langle |L| \rangle$ ,  $\langle L^2 \rangle$  for acentric reflections are 0.5, 0.375 respectively for untwinned datasets, and 0.333, 0.2 for perfectly twinned datasets.

## 5 Model quality

### 5.1 Standard geometry

Bond lengths and bond angles in the following residue types are not validated in this section: ANP

The Z score for a bond length (or angle) is the number of standard deviations the observed value is removed from the expected value. A bond length (or angle) with  $|Z| > 5$  is considered an outlier worth inspection. RMSZ is the root-mean-square of all Z scores of the bond lengths (or angles).

Mol	Chain	Bond lengths		Bond angles	
		RMSZ	# Z  >5	RMSZ	# Z  >5
1	A	0.22	0/2395	0.40	0/3233
1	B	0.21	0/2364	0.38	0/3190
All	All	0.21	0/4759	0.39	0/6423

There are no bond length outliers.

There are no bond angle outliers.

There are no chirality outliers.

There are no planarity outliers.

### 5.2 Too-close contacts

In the following table, the Non-H and H(model) columns list the number of non-hydrogen atoms and hydrogen atoms in the chain respectively. The H(added) column lists the number of hydrogen atoms added and optimized by MolProbity. The Clashes column lists the number of clashes within the asymmetric unit, whereas Symm-Clashes lists symmetry related clashes.

Mol	Chain	Non-H	H(model)	H(added)	Clashes	Symm-Clashes
1	A	2325	0	2340	19	0
1	B	2306	0	2302	21	0
2	A	19	0	12	0	0
3	A	40	0	0	1	0
3	B	30	0	0	1	0
All	All	4720	0	4654	40	0

The all-atom clashscore is defined as the number of clashes found per 1000 atoms (including hydrogen atoms). The all-atom clashscore for this structure is 4.

All (40) close contacts within the same asymmetric unit are listed below, sorted by their clash magnitude.



Atom-1	Atom-2	Interatomic distance (Å)	Clash overlap (Å)
1:A:406:ASP:HB3	1:A:407:LYS:HA	1.66	0.77
1:A:459:ARG:NH1	1:A:481:LEU:O	2.27	0.68
1:A:420:THR:O	3:A:1101:HOH:O	2.13	0.67
1:B:405:LYS:HE3	1:B:407:LYS:HB2	1.76	0.66
1:A:460:ASN:O	1:A:465:ASN:ND2	2.39	0.56
1:B:558:ASP:N	1:B:558:ASP:OD1	2.42	0.53
1:A:387:VAL:HG13	1:A:456:ILE:HD13	1.92	0.52
1:B:403:LEU:O	1:B:410:ASN:ND2	2.30	0.52
1:A:409:LEU:H	1:A:409:LEU:HD12	1.76	0.51
1:B:344:VAL:HG22	1:B:354:ILE:HG22	1.93	0.51
1:A:406:ASP:CB	1:A:407:LYS:HA	2.37	0.51
1:A:352:GLN:HG3	1:A:354:ILE:HD11	1.91	0.50
1:A:510:VAL:H	1:A:516:MET:HE1	1.77	0.50
1:A:374:ASP:HB3	1:A:377:THR:HG22	1.94	0.50
1:B:387:VAL:HG13	1:B:456:ILE:HD13	1.93	0.49
1:B:472:LYS:O	3:B:701:HOH:O	2.20	0.49
1:B:361:THR:HG23	1:B:363:GLU:H	1.77	0.48
1:A:370:LEU:HD12	1:A:409:LEU:HD13	1.96	0.48
1:B:407:LYS:N	1:B:408:ARG:HA	2.28	0.47
1:B:349:CYS:HA	1:B:350:PHE:HA	1.58	0.46
1:B:349:CYS:HB2	1:B:350:PHE:CD2	2.51	0.45
1:B:338:ASP:HA	1:B:359:ARG:HD2	1.98	0.45
1:B:351:GLY:O	1:B:352:GLN:NE2	2.50	0.45
1:A:336:PRO:HD3	1:A:405:LYS:HB2	1.99	0.44
1:A:451:LEU:HD11	1:A:479:PHE:HE1	1.81	0.44
1:B:517:ALA:HA	1:B:518:PRO:HD3	1.89	0.44
1:A:554:PRO:HB2	1:A:562:ASN:HB3	1.98	0.44
1:B:393:HIS:CG	1:B:394:PRO:HD2	2.53	0.43
1:B:554:PRO:HB2	1:B:562:ASN:HB3	2.00	0.43
1:A:549:ASP:HB3	1:A:552:TYR:HD2	1.84	0.43
1:A:553:LEU:HA	1:A:554:PRO:HD3	1.88	0.43
1:A:388:MET:HB3	1:A:399:PHE:HB2	2.01	0.42
1:B:339:LEU:HD13	1:B:403:LEU:HD22	2.01	0.42
1:B:367:MET:HG3	1:B:412:ILE:HG13	2.01	0.42
1:A:448:MET:HE2	1:A:476:VAL:HG21	2.02	0.41
1:B:374:ASP:HB3	1:B:377:THR:OG1	2.21	0.41
1:B:618:GLY:O	1:B:622:GLU:HB2	2.21	0.41
1:B:553:LEU:HA	1:B:554:PRO:HD3	1.88	0.41
1:A:368:LYS:HG2	1:A:381:PHE:HE1	1.87	0.40
1:B:459:ARG:CZ	1:B:483:ARG:HB2	2.51	0.40

There are no symmetry-related clashes.

## 5.3 Torsion angles

### 5.3.1 Protein backbone

In the following table, the Percentiles column shows the percent Ramachandran outliers of the chain as a percentile score with respect to all X-ray entries followed by that with respect to entries of similar resolution.

The Analysed column shows the number of residues for which the backbone conformation was analysed, and the total number of residues.

Mol	Chain	Analysed	Favoured	Allowed	Outliers	Percentiles	
1	A	283/315 (90%)	275 (97%)	8 (3%)	0	100	100
1	B	280/315 (89%)	271 (97%)	9 (3%)	0	100	100
All	All	563/630 (89%)	546 (97%)	17 (3%)	0	100	100

There are no Ramachandran outliers to report.

### 5.3.2 Protein sidechains

In the following table, the Percentiles column shows the percent sidechain outliers of the chain as a percentile score with respect to all X-ray entries followed by that with respect to entries of similar resolution.

The Analysed column shows the number of residues for which the sidechain conformation was analysed, and the total number of residues.

Mol	Chain	Analysed	Rotameric	Outliers	Percentiles	
1	A	258/280 (92%)	251 (97%)	7 (3%)	52	64
1	B	254/280 (91%)	245 (96%)	9 (4%)	43	53
All	All	512/560 (91%)	496 (97%)	16 (3%)	47	59

All (16) residues with a non-rotameric sidechain are listed below:

Mol	Chain	Res	Type
1	A	377	THR
1	A	403	LEU
1	A	406	ASP
1	A	459	ARG
1	A	461	LEU
1	A	508	THR
1	A	609	MET
1	B	345	LEU

*Continued on next page...*

*Continued from previous page...*

Mol	Chain	Res	Type
1	B	350	PHE
1	B	370	LEU
1	B	381	PHE
1	B	405	LYS
1	B	429	ASP
1	B	557	MET
1	B	558	ASP
1	B	622	GLU

Some sidechains can be flipped to improve hydrogen bonding and reduce clashes. There are no such sidechains identified.

### 5.3.3 RNA [i](#)

There are no RNA molecules in this entry.

## 5.4 Non-standard residues in protein, DNA, RNA chains [i](#)

There are no non-standard protein/DNA/RNA residues in this entry.

## 5.5 Carbohydrates [i](#)

There are no carbohydrates in this entry.

## 5.6 Ligand geometry [i](#)

1 ligand is modelled in this entry.

In the following table, the Counts columns list the number of bonds (or angles) for which Mogul statistics could be retrieved, the number of bonds (or angles) that are observed in the model and the number of bonds (or angles) that are defined in the chemical component dictionary. The Link column lists molecule types, if any, to which the group is linked. The Z score for a bond length (or angle) is the number of standard deviations the observed value is removed from the expected value. A bond length (or angle) with  $|Z| > 2$  is considered an outlier worth inspection. RMSZ is the root-mean-square of all Z scores of the bond lengths (or angles).

Mol	Type	Chain	Res	Link	Bond lengths			Bond angles		
					Counts	RMSZ	$\# Z  > 2$	Counts	RMSZ	$\# Z  > 2$
2	ANP	A	1000	-	18,21,33	0.52	0	16,31,52	0.35	0

In the following table, the Chirals column lists the number of chiral outliers, the number of chiral centers analysed, the number of these observed in the model and the number defined in the chemical component dictionary. Similar counts are reported in the Torsion and Rings columns. '-' means no outliers of that kind were identified.

Mol	Type	Chain	Res	Link	Chirals	Torsions	Rings
2	ANP	A	1000	-	-	0/2/22/38	0/3/3/3

There are no bond length outliers.

There are no bond angle outliers.

There are no chirality outliers.

There are no torsion outliers.

There are no ring outliers.

No monomer is involved in short contacts.

## 5.7 Other polymers [i](#)

There are no such residues in this entry.

## 5.8 Polymer linkage issues [i](#)

There are no chain breaks in this entry.

## 6 Fit of model and data

### 6.1 Protein, DNA and RNA chains

In the following table, the column labelled ‘#RSRZ> 2’ contains the number (and percentage) of RSRZ outliers, followed by percent RSRZ outliers for the chain as percentile scores relative to all X-ray entries and entries of similar resolution. The OWAB column contains the minimum, median, 95<sup>th</sup> percentile and maximum values of the occupancy-weighted average B-factor per residue. The column labelled ‘Q< 0.9’ lists the number of (and percentage) of residues with an average occupancy less than 0.9.

Mol	Chain	Analysed	<RSRZ>	#RSRZ>2		OWAB(Å <sup>2</sup> )	Q<0.9
1	A	283/315 (89%)	0.39	13 (4%)	36 35	39, 61, 116, 156	0
1	B	284/315 (90%)	0.70	42 (14%)	3 3	42, 73, 141, 171	0
All	All	567/630 (90%)	0.54	55 (9%)	10 9	39, 66, 131, 171	0

All (55) RSRZ outliers are listed below:

Mol	Chain	Res	Type	RSRZ
1	B	337	SER	11.3
1	A	349	CYS	10.4
1	B	349	CYS	8.4
1	B	373	PHE	7.4
1	B	408	ARG	6.5
1	B	340	ILE	6.0
1	B	511	GLY	5.4
1	A	373	PHE	4.9
1	B	339	LEU	4.7
1	B	379	ARG	4.6
1	B	407	LYS	4.6
1	A	350	PHE	4.6
1	B	509	VAL	4.2
1	A	375	GLU	4.2
1	B	345	LEU	4.2
1	B	375	GLU	4.1
1	B	382	LEU	4.1
1	B	404	TYR	4.0
1	B	409	LEU	4.0
1	A	511	GLY	4.0
1	B	347	LYS	3.8
1	B	557	MET	3.7
1	A	404	TYR	3.6
1	B	378	GLN	3.5

*Continued on next page...*

*Continued from previous page...*

Mol	Chain	Res	Type	RSRZ
1	B	411	PHE	3.3
1	B	350	PHE	3.2
1	A	559	PHE	3.1
1	B	334	PHE	3.1
1	A	371	ILE	3.1
1	A	348	GLY	3.0
1	B	380	THR	3.0
1	A	379	ARG	2.9
1	B	559	PHE	2.8
1	B	356	VAL	2.8
1	B	389	ARG	2.8
1	B	348	GLY	2.8
1	B	360	GLU	2.7
1	B	372	ARG	2.7
1	B	358	HIS	2.7
1	B	376	GLU	2.7
1	B	361	THR	2.6
1	B	403	LEU	2.6
1	B	332	ARG	2.5
1	B	524	ARG	2.5
1	B	405	LYS	2.5
1	B	370	LEU	2.4
1	B	483	ARG	2.3
1	A	360	GLU	2.3
1	A	376	GLU	2.3
1	B	359	ARG	2.3
1	B	406	ASP	2.1
1	B	371	ILE	2.0
1	B	365	MET	2.0
1	A	632	TYR	2.0
1	B	484	LEU	2.0

## 6.2 Non-standard residues in protein, DNA, RNA chains ⓘ

There are no non-standard protein/DNA/RNA residues in this entry.

## 6.3 Carbohydrates ⓘ

There are no carbohydrates in this entry.

## 6.4 Ligands [i](#)

In the following table, the Atoms column lists the number of modelled atoms in the group and the number defined in the chemical component dictionary. LLDF column lists the quality of electron density of the group with respect to its neighbouring residues in protein, DNA or RNA chains. The B-factors column lists the minimum, median, 95<sup>th</sup> percentile and maximum values of B factors of atoms in the group. The column labelled 'Q< 0.9' lists the number of atoms with occupancy less than 0.9.

Mol	Type	Chain	Res	Atoms	RSCC	RSR	LLDF	B-factors( $\text{\AA}^2$ )	Q<0.9
2	ANP	A	1000	19/31	0.68	0.36	6.43	74,117,127,131	3

## 6.5 Other polymers [i](#)

There are no such residues in this entry.