



Full wwPDB X-ray Structure Validation Report ⓘ

Jan 31, 2016 – 07:55 PM GMT

PDB ID : 1HXC
Title : CRYSTAL STRUCTURE OF TEAS C440W
Authors : Starks, C.S.; Rising, K.A.; Chappell, J.; Noel, J.P.
Deposited on : 2001-01-12
Resolution : 2.25 Å(reported)

This is a Full wwPDB X-ray Structure Validation Report for a publicly released PDB entry.
We welcome your comments at validation@mail.wwpdb.org
A user guide is available at
<http://wwpdb.org/validation/2016/XrayValidationReportHelp>
with specific help available everywhere you see the ⓘ symbol.

The following versions of software and data (see [references ⓘ](#)) were used in the production of this report:

MolProbity : 4.02b-467
Mogul : 1.7 (RC4), CSD as536be (2015)
Xtriage (Phenix) : 1.9-1692
EDS : rb-20026688
Percentile statistics : 20151230.v01 (using entries in the PDB archive December 30th 2015)
Refmac : 5.8.0135
CCP4 : 6.5.0
Ideal geometry (proteins) : Engh & Huber (2001)
Ideal geometry (DNA, RNA) : Parkinson et al. (1996)
Validation Pipeline (wwPDB-VP) : trunk26865

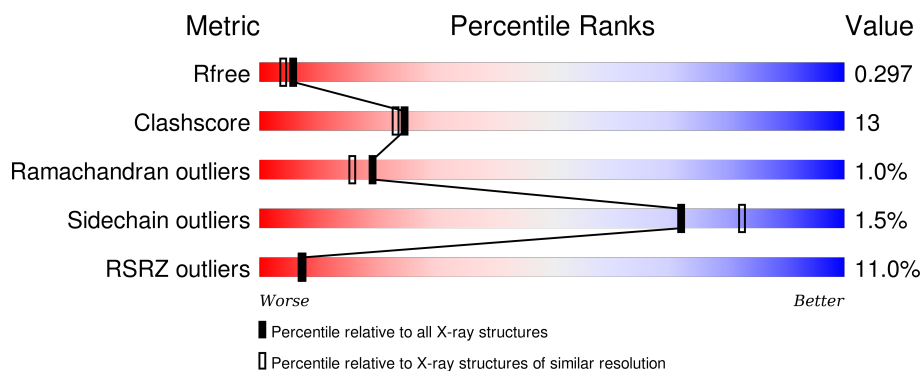
1 Overall quality at a glance

The following experimental techniques were used to determine the structure:

X-RAY DIFFRACTION

The reported resolution of this entry is 2.25 Å.

Percentile scores (ranging between 0-100) for global validation metrics of the entry are shown in the following graphic. The table shows the number of entries on which the scores are based.



Metric	Whole archive (#Entries)	Similar resolution (#Entries, resolution range(Å))
R_{free}	91344	1640 (2.28-2.24)
Clashscore	102246	1095 (2.26-2.26)
Ramachandran outliers	100387	1063 (2.26-2.26)
Sidechain outliers	100360	1063 (2.26-2.26)
RSRZ outliers	91569	1647 (2.28-2.24)

The table below summarises the geometric issues observed across the polymeric chains and their fit to the electron density. The red, orange, yellow and green segments on the lower bar indicate the fraction of residues that contain outliers for ≥ 3 , 2, 1 and 0 types of geometric quality criteria. A grey segment represents the fraction of residues that are not modelled. The numeric value for each fraction is indicated below the corresponding segment, with a dot representing fractions $\leq 5\%$. The upper red bar (where present) indicates the fraction of residues that have poor fit to the electron density. The numeric value is given above the bar.

Mol	Chain	Length	Quality of chain
1	A	548	<div> <div>10%</div> <div>73%</div> <div>19%</div> <div>6%</div> </div>

The following table lists non-polymeric compounds, carbohydrate monomers and non-standard residues in protein, DNA, RNA chains that are outliers for geometric or electron-density-fit criteria:

Mol	Type	Chain	Res	Chirality	Geometry	Clashes	Electron density
2	FHP	A	900	-	-	X	X

2 Entry composition [i](#)

There are 3 unique types of molecules in this entry. The entry contains 4263 atoms, of which 0 are hydrogens and 0 are deuteriums.

In the tables below, the ZeroOcc column contains the number of atoms modelled with zero occupancy, the AltConf column contains the number of residues with at least one atom in alternate conformation and the Trace column contains the number of residues modelled with at most 2 atoms.

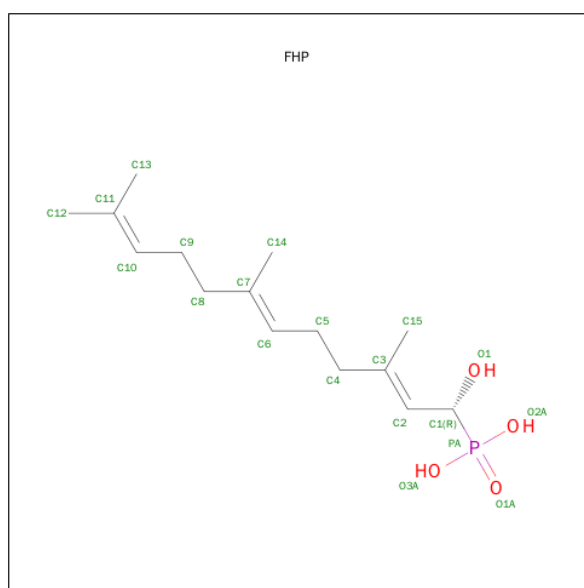
- Molecule 1 is a protein called 5-EPI-ARISTOLOCHENE SYNTHASE.

Mol	Chain	Residues	Atoms					ZeroOcc	AltConf	Trace
			Total	C	N	O	S			
1	A	516	4192	2682	691	801	18	0	0	0

There are 2 discrepancies between the modelled and reference sequences:

Chain	Residue	Modelled	Actual	Comment	Reference
A	440	TRP	CYS	ENGINEERED	UNP Q40577
A	532	GLU	LYS	see remark 999	UNP Q40577

- Molecule 2 is 1-HYDROXY-3,7,11-TRIMETHYLDODECA-2,6,10-TRIENE PHOSPHONIC ACID (three-letter code: FHP) (formula: $C_{15}H_{27}O_4P$).



Mol	Chain	Residues	Atoms				ZeroOcc	AltConf
			Total	C	O	P		
2	A	1	20	15	4	1	0	0

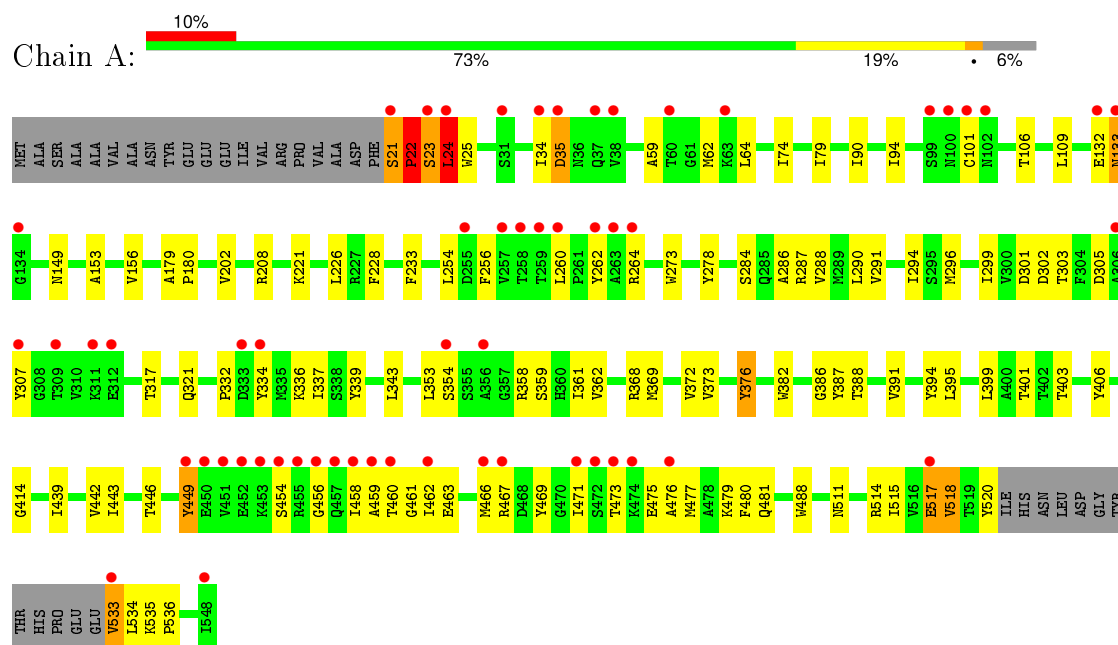
- Molecule 3 is water.

Mol	Chain	Residues	Atoms		ZeroOcc	AltConf
3	A	51	Total	O	0	0
			51	51		

3 Residue-property plots

These plots are drawn for all protein, RNA and DNA chains in the entry. The first graphic for a chain summarises the proportions of errors displayed in the second graphic. The second graphic shows the sequence view annotated by issues in geometry and electron density. Residues are color-coded according to the number of geometric quality criteria for which they contain at least one outlier: green = 0, yellow = 1, orange = 2 and red = 3 or more. A red dot above a residue indicates a poor fit to the electron density ($RSRZ > 2$). Stretches of 2 or more consecutive residues without any outlier are shown as a green connector. Residues present in the sample, but not in the model, are shown in grey.

• Molecule 1: 5-EPI-ARISTOLOCHENE SYNTHASE



4 Data and refinement statistics

Property	Value	Source
Space group	P 41 21 2	Depositor
Cell constants a, b, c, α , β , γ	126.12Å 126.12Å 120.34Å 90.00° 90.00° 90.00°	Depositor
Resolution (Å)	50.00 – 2.25 49.88 – 2.28	Depositor EDS
% Data completeness (in resolution range)	94.6 (50.00-2.25) 94.7 (49.88-2.28)	Depositor EDS
R_{merge}	(Not available)	Depositor
R_{sym}	0.06	Depositor
$\langle I/\sigma(I) \rangle$ ¹	3.55 (at 2.27Å)	Xtriage
Refinement program	CNS 0.4	Depositor
R, R_{free}	0.278 , 0.296 0.278 , 0.297	Depositor DCC
R_{free} test set	1996 reflections (4.67%)	DCC
Wilson B-factor (Å ²)	41.3	Xtriage
Anisotropy	0.743	Xtriage
Bulk solvent k_{sol} (e/Å ³), B_{sol} (Å ²)	0.36 , 46.4	EDS
Estimated twinning fraction	0.013 for -h,-l,-k 0.000 for l,-k,h	Xtriage
L-test for twinning ²	$\langle L \rangle = 0.51$, $\langle L^2 \rangle = 0.35$	Xtriage
Outliers	0 of 42723 reflections	Xtriage
F_o, F_c correlation	0.93	EDS
Total number of atoms	4263	wwPDB-VP
Average B, all atoms (Å ²)	59.0	wwPDB-VP

Xtriage's analysis on translational NCS is as follows: *The largest off-origin peak in the Patterson function is 2.59% of the height of the origin peak. No significant pseudotranslation is detected.*

¹Intensities estimated from amplitudes.

²Theoretical values of $\langle |L| \rangle$, $\langle L^2 \rangle$ for acentric reflections are 0.5, 0.375 respectively for untwinned datasets, and 0.333, 0.2 for perfectly twinned datasets.

5 Model quality

5.1 Standard geometry

Bond lengths and bond angles in the following residue types are not validated in this section: FHP

The Z score for a bond length (or angle) is the number of standard deviations the observed value is removed from the expected value. A bond length (or angle) with $|Z| > 5$ is considered an outlier worth inspection. RMSZ is the root-mean-square of all Z scores of the bond lengths (or angles).

Mol	Chain	Bond lengths		Bond angles	
		RMSZ	$\# Z > 5$	RMSZ	$\# Z > 5$
1	A	0.49	4/4281 (0.1%)	0.67	8/5803 (0.1%)

Chiral center outliers are detected by calculating the chiral volume of a chiral center and verifying if the center is modelled as a planar moiety or with the opposite hand. A planarity outlier is detected by checking planarity of atoms in a peptide group, atoms in a mainchain group or atoms of a sidechain that are expected to be planar.

Mol	Chain	#Chirality outliers	#Planarity outliers
1	A	0	3

All (4) bond length outliers are listed below:

Mol	Chain	Res	Type	Atoms	Z	Observed(Å)	Ideal(Å)
1	A	24	LEU	C-O	9.31	1.41	1.23
1	A	518	VAL	N-CA	-7.10	1.32	1.46
1	A	21	SER	C-O	-6.35	1.11	1.23
1	A	517	GLU	CA-C	-5.33	1.39	1.52

All (8) bond angle outliers are listed below:

Mol	Chain	Res	Type	Atoms	Z	Observed(°)	Ideal(°)
1	A	517	GLU	CA-C-N	-9.40	96.51	117.20
1	A	24	LEU	O-C-N	8.51	136.31	122.70
1	A	517	GLU	CA-C-O	8.43	137.80	120.10
1	A	517	GLU	C-N-CA	-6.95	104.34	121.70
1	A	520	TYR	CA-CB-CG	-5.69	102.59	113.40
1	A	23	SER	CA-C-N	-5.50	105.11	117.20
1	A	533	VAL	CB-CA-C	-5.33	101.28	111.40
1	A	23	SER	O-C-N	5.22	131.05	122.70

There are no chirality outliers.

All (3) planarity outliers are listed below:

Mol	Chain	Res	Type	Group
1	A	22	PRO	Mainchain
1	A	376	TYR	Sidechain
1	A	449	TYR	Sidechain

5.2 Too-close contacts ⓘ

In the following table, the Non-H and H(model) columns list the number of non-hydrogen atoms and hydrogen atoms in the chain respectively. The H(added) column lists the number of hydrogen atoms added and optimized by MolProbity. The Clashes column lists the number of clashes within the asymmetric unit, whereas Symm-Clashes lists symmetry related clashes.

Mol	Chain	Non-H	H(model)	H(added)	Clashes	Symm-Clashes
1	A	4192	0	4145	101	0
2	A	20	0	25	16	0
3	A	51	0	0	0	0
All	All	4263	0	4170	106	0

The all-atom clashscore is defined as the number of clashes found per 1000 atoms (including hydrogen atoms). The all-atom clashscore for this structure is 13.

All (106) close contacts within the same asymmetric unit are listed below, sorted by their clash magnitude.

Atom-1	Atom-2	Interatomic distance (Å)	Clash overlap (Å)
1:A:401:THR:O	2:A:900:FHP:H152	1.48	1.13
1:A:24:LEU:H	1:A:24:LEU:HD23	1.04	1.08
2:A:900:FHP:H133	2:A:900:FHP:H82	1.33	1.07
1:A:386:GLY:HA2	1:A:458:ILE:HD13	1.32	1.05
1:A:301:ASP:OD1	2:A:900:FHP:H2	1.56	1.02
1:A:301:ASP:CG	2:A:900:FHP:H2	1.80	1.01
1:A:202:VAL:HG23	1:A:518:VAL:HG21	1.44	0.98
1:A:386:GLY:CA	1:A:458:ILE:HD13	1.96	0.96
1:A:401:THR:O	2:A:900:FHP:C15	2.16	0.93
1:A:458:ILE:HG13	1:A:459:ALA:N	1.84	0.92
2:A:900:FHP:H82	2:A:900:FHP:C13	2.03	0.89
1:A:24:LEU:N	1:A:24:LEU:HD23	1.89	0.87
1:A:301:ASP:OD1	2:A:900:FHP:C2	2.22	0.86
1:A:23:SER:C	1:A:25:TRP:H	1.77	0.82
1:A:287:ARG:O	1:A:291:VAL:HG23	1.81	0.79

Continued on next page...

Continued from previous page...

Atom-1	Atom-2	Interatomic distance (Å)	Clash overlap (Å)
1:A:376:TYR:CE2	2:A:900:FHP:C1	2.66	0.79
1:A:386:GLY:C	1:A:458:ILE:CD1	2.51	0.79
1:A:387:TYR:N	1:A:458:ILE:CD1	2.47	0.77
1:A:23:SER:C	1:A:25:TRP:N	2.39	0.77
1:A:376:TYR:CE2	2:A:900:FHP:O1	2.38	0.77
1:A:376:TYR:CE2	2:A:900:FHP:H1	2.20	0.75
1:A:359:SER:O	1:A:362:VAL:HG23	1.89	0.73
1:A:488:TRP:HZ2	1:A:517:GLU:OE2	1.73	0.71
1:A:260:LEU:HD11	1:A:337:ILE:HB	1.71	0.71
2:A:900:FHP:C8	2:A:900:FHP:C13	2.69	0.71
1:A:301:ASP:OD1	2:A:900:FHP:O1	2.08	0.70
1:A:358:ARG:O	1:A:361:ILE:HG12	1.92	0.70
1:A:514:ARG:O	1:A:517:GLU:OE1	2.09	0.70
1:A:471:ILE:HB	1:A:475:GLU:HB2	1.73	0.69
1:A:376:TYR:HE2	2:A:900:FHP:H1	1.56	0.69
1:A:514:ARG:HA	1:A:517:GLU:OE1	1.91	0.69
1:A:109:LEU:HB2	1:A:149:ASN:HD22	1.56	0.68
1:A:535:LYS:HB3	1:A:536:PRO:HD3	1.75	0.68
1:A:462:ILE:HD13	1:A:477:MET:HG2	1.76	0.68
1:A:353:LEU:HB2	1:A:359:SER:HA	1.75	0.67
1:A:24:LEU:CD2	1:A:24:LEU:H	1.82	0.67
1:A:533:VAL:HG22	1:A:533:VAL:O	1.96	0.66
1:A:386:GLY:CA	1:A:458:ILE:CD1	2.73	0.66
1:A:442:VAL:HG13	1:A:480:PHE:HB3	1.76	0.65
1:A:382:TRP:O	1:A:458:ILE:HD11	1.97	0.64
1:A:109:LEU:HB2	1:A:149:ASN:ND2	2.12	0.64
1:A:317:THR:O	1:A:321:GLN:HG2	1.97	0.63
1:A:64:LEU:HD23	1:A:101:CYS:HB2	1.79	0.63
1:A:296:MET:HE1	1:A:299:ILE:HD12	1.81	0.62
1:A:74:ILE:HG23	1:A:79:ILE:HG13	1.80	0.62
1:A:386:GLY:C	1:A:458:ILE:HD12	2.21	0.60
1:A:101:CYS:SG	1:A:106:THR:HG21	2.42	0.59
1:A:488:TRP:CZ2	1:A:517:GLU:OE2	2.56	0.59
1:A:153:ALA:O	1:A:156:VAL:HG22	2.03	0.59
1:A:462:ILE:O	1:A:466:MET:HG3	2.02	0.58
1:A:442:VAL:HG11	1:A:480:PHE:O	2.03	0.58
1:A:458:ILE:HG13	1:A:459:ALA:H	1.67	0.58
1:A:301:ASP:OD1	2:A:900:FHP:C1	2.52	0.57
1:A:387:TYR:N	1:A:458:ILE:HD11	2.20	0.56
1:A:179:ALA:HB3	1:A:180:PRO:HD3	1.87	0.56
1:A:388:THR:HG21	1:A:467:ARG:HD2	1.88	0.56

Continued on next page...

Continued from previous page...

Atom-1	Atom-2	Interatomic distance (Å)	Clash overlap (Å)
1:A:90:ILE:O	1:A:94:ILE:HG13	2.06	0.55
1:A:254:LEU:HD13	1:A:256:PHE:CE1	2.42	0.55
1:A:511:ASN:O	1:A:515:ILE:HG13	2.07	0.55
1:A:449:TYR:CG	1:A:449:TYR:O	2.61	0.54
1:A:439:ILE:O	1:A:443:ILE:HG12	2.07	0.54
1:A:458:ILE:CG1	1:A:459:ALA:N	2.67	0.54
1:A:533:VAL:HG13	1:A:534:LEU:HG	1.89	0.53
1:A:59:ALA:HB3	1:A:62:MET:SD	2.49	0.53
1:A:386:GLY:C	1:A:458:ILE:HD13	2.22	0.53
1:A:387:TYR:N	1:A:458:ILE:HD12	2.23	0.53
1:A:286:ALA:HA	1:A:414:GLY:HA3	1.91	0.52
1:A:454:SER:C	1:A:456:GLY:H	2.13	0.52
1:A:449:TYR:HB2	1:A:462:ILE:HD12	1.92	0.52
2:A:900:FHP:C8	2:A:900:FHP:H133	2.19	0.52
1:A:394:TYR:CZ	1:A:461:GLY:HA2	2.44	0.51
1:A:514:ARG:CA	1:A:517:GLU:OE1	2.58	0.51
1:A:34:ILE:O	1:A:34:ILE:HG23	2.10	0.51
1:A:23:SER:HA	1:A:24:LEU:HD23	1.92	0.51
1:A:23:SER:O	1:A:25:TRP:N	2.45	0.50
1:A:262:TYR:HE1	1:A:303:THR:HG1	1.57	0.50
1:A:462:ILE:HG23	1:A:476:ALA:HB1	1.94	0.49
1:A:339:TYR:CE2	1:A:343:LEU:HD11	2.47	0.49
1:A:395:LEU:O	1:A:399:LEU:HG	2.12	0.48
1:A:290:LEU:O	1:A:294:ILE:HG13	2.13	0.48
1:A:221:LYS:HD2	1:A:226:LEU:HD22	1.95	0.47
1:A:446:THR:HA	1:A:462:ILE:HD11	1.97	0.47
1:A:264:ARG:N	1:A:302:ASP:OD2	2.45	0.47
1:A:354:SER:HA	1:A:359:SER:OG	2.14	0.47
2:A:900:FHP:H52	2:A:900:FHP:H151	1.82	0.45
1:A:463:GLU:HA	1:A:466:MET:HE3	1.98	0.45
1:A:21:SER:HA	1:A:22:PRO:HD3	1.71	0.45
1:A:514:ARG:C	1:A:517:GLU:OE1	2.56	0.44
1:A:132:GLU:O	1:A:133:ASN:HB2	2.18	0.44
1:A:391:VAL:HG21	1:A:469:TYR:HE2	1.82	0.43
1:A:449:TYR:O	1:A:449:TYR:CD1	2.72	0.43
1:A:369:MET:O	1:A:373:VAL:HG23	2.19	0.43
1:A:469:TYR:CZ	1:A:479:LYS:NZ	2.87	0.43
1:A:473:THR:O	1:A:477:MET:HG3	2.19	0.43
1:A:260:LEU:CD2	1:A:334:TYR:HB2	2.50	0.42
1:A:533:VAL:CG2	1:A:533:VAL:O	2.65	0.42
1:A:25:TRP:CH2	1:A:535:LYS:HG3	2.55	0.42

Continued on next page...

Continued from previous page...

Atom-1	Atom-2	Interatomic distance (Å)	Clash overlap (Å)
1:A:403:THR:O	1:A:406:TYR:HB3	2.20	0.42
1:A:368:ARG:O	1:A:372:VAL:HG23	2.19	0.42
1:A:284:SER:O	1:A:288:VAL:HG23	2.20	0.41
1:A:477:MET:O	1:A:481:GLN:HG2	2.20	0.41
1:A:359:SER:O	1:A:362:VAL:CG2	2.63	0.41
1:A:208:ARG:HD3	1:A:233:PHE:CZ	2.55	0.41
1:A:463:GLU:HA	1:A:466:MET:CE	2.51	0.41
1:A:296:MET:CE	1:A:299:ILE:HD12	2.47	0.41
1:A:332:PRO:O	1:A:336:LYS:HG3	2.22	0.40

There are no symmetry-related clashes.

5.3 Torsion angles [i](#)

5.3.1 Protein backbone [i](#)

In the following table, the Percentiles column shows the percent Ramachandran outliers of the chain as a percentile score with respect to all X-ray entries followed by that with respect to entries of similar resolution.

The Analysed column shows the number of residues for which the backbone conformation was analysed, and the total number of residues.

Mol	Chain	Analysed	Favoured	Allowed	Outliers	Percentiles	
1	A	512/548 (93%)	489 (96%)	18 (4%)	5 (1%)	19	16

All (5) Ramachandran outliers are listed below:

Mol	Chain	Res	Type
1	A	133	ASN
1	A	22	PRO
1	A	307	TYR
1	A	24	LEU
1	A	35	ASP

5.3.2 Protein sidechains [i](#)

In the following table, the Percentiles column shows the percent sidechain outliers of the chain as a percentile score with respect to all X-ray entries followed by that with respect to entries of similar resolution.

The Analysed column shows the number of residues for which the sidechain conformation was analysed, and the total number of residues.

Mol	Chain	Analysed	Rotameric	Outliers	Percentiles	
1	A	463/489 (95%)	456 (98%)	7 (2%)	72	82

All (7) residues with a non-rotameric sidechain are listed below:

Mol	Chain	Res	Type
1	A	24	LEU
1	A	35	ASP
1	A	228	PHE
1	A	273	TRP
1	A	278	TYR
1	A	305	ASP
1	A	460	THR

Some sidechains can be flipped to improve hydrogen bonding and reduce clashes. All (8) such sidechains are listed below:

Mol	Chain	Res	Type
1	A	28	GLN
1	A	97	GLN
1	A	102	ASN
1	A	116	GLN
1	A	149	ASN
1	A	155	HIS
1	A	360	HIS
1	A	540	ASN

5.3.3 RNA ⓘ

There are no RNA molecules in this entry.

5.4 Non-standard residues in protein, DNA, RNA chains ⓘ

There are no non-standard protein/DNA/RNA residues in this entry.

5.5 Carbohydrates ⓘ

There are no carbohydrates in this entry.

5.6 Ligand geometry

1 ligand is modelled in this entry.

In the following table, the Counts columns list the number of bonds (or angles) for which Mogul statistics could be retrieved, the number of bonds (or angles) that are observed in the model and the number of bonds (or angles) that are defined in the chemical component dictionary. The Link column lists molecule types, if any, to which the group is linked. The Z score for a bond length (or angle) is the number of standard deviations the observed value is removed from the expected value. A bond length (or angle) with $|Z| > 2$ is considered an outlier worth inspection. RMSZ is the root-mean-square of all Z scores of the bond lengths (or angles).

Mol	Type	Chain	Res	Link	Bond lengths			Bond angles		
					Counts	RMSZ	# $ Z > 2$	Counts	RMSZ	# $ Z > 2$
2	FHP	A	900	1	19,19,19	2.52	5 (26%)	22,25,25	2.12	7 (31%)

In the following table, the Chirals column lists the number of chiral outliers, the number of chiral centers analysed, the number of these observed in the model and the number defined in the chemical component dictionary. Similar counts are reported in the Torsion and Rings columns. '-' means no outliers of that kind were identified.

Mol	Type	Chain	Res	Link	Chirals	Torsions	Rings
2	FHP	A	900	1	-	0/16/22/22	0/0/0/0

All (5) bond length outliers are listed below:

Mol	Chain	Res	Type	Atoms	Z	Observed(Å)	Ideal(Å)
2	A	900	FHP	PA-C1	-2.96	1.78	1.82
2	A	900	FHP	PA-O3A	-2.45	1.50	1.54
2	A	900	FHP	PA-O2A	-2.13	1.51	1.54
2	A	900	FHP	C6-C7	2.40	1.37	1.33
2	A	900	FHP	C1-C2	9.14	1.60	1.50

All (7) bond angle outliers are listed below:

Mol	Chain	Res	Type	Atoms	Z	Observed(°)	Ideal(°)
2	A	900	FHP	O1A-PA-C1	-5.74	100.50	113.15
2	A	900	FHP	C5-C6-C7	-2.82	121.62	127.76
2	A	900	FHP	C13-C11-C12	2.10	119.80	114.64
2	A	900	FHP	O3A-PA-O2A	2.54	115.22	107.57
2	A	900	FHP	C14-C7-C8	2.68	119.50	115.41
2	A	900	FHP	C15-C3-C4	3.29	120.43	115.41
2	A	900	FHP	PA-C1-C2	3.70	117.98	111.84

There are no chirality outliers.

There are no torsion outliers.

There are no ring outliers.

1 monomer is involved in 16 short contacts:

Mol	Chain	Res	Type	Clashes	Symm-Clashes
2	A	900	FHP	16	0

5.7 Other polymers [i](#)

There are no such residues in this entry.

5.8 Polymer linkage issues [i](#)

There are no chain breaks in this entry.

6 Fit of model and data ⓘ

6.1 Protein, DNA and RNA chains ⓘ

In the following table, the column labelled ‘#RSRZ> 2’ contains the number (and percentage) of RSRZ outliers, followed by percent RSRZ outliers for the chain as percentile scores relative to all X-ray entries and entries of similar resolution. The OWAB column contains the minimum, median, 95th percentile and maximum values of the occupancy-weighted average B-factor per residue. The column labelled ‘Q< 0.9’ lists the number of (and percentage) of residues with an average occupancy less than 0.9.

Mol	Chain	Analysed	<RSRZ>	#RSRZ>2	OWAB(Å ²)	Q<0.9
1	A	516/548 (94%)	0.65	57 (11%) 7 7	29, 55, 98, 102	0

All (57) RSRZ outliers are listed below:

Mol	Chain	Res	Type	RSRZ
1	A	459	ALA	8.9
1	A	457	GLN	6.8
1	A	452	GLU	6.6
1	A	449	TYR	6.4
1	A	474	LYS	6.0
1	A	458	ILE	5.9
1	A	99	SER	5.9
1	A	259	THR	5.5
1	A	21	SER	5.4
1	A	455	ARG	5.1
1	A	134	GLY	5.1
1	A	257	VAL	4.7
1	A	476	ALA	4.7
1	A	133	ASN	4.4
1	A	35	ASP	4.3
1	A	354	SER	4.2
1	A	312	GLU	4.0
1	A	517	GLU	3.9
1	A	263	ALA	3.9
1	A	101	CYS	3.9
1	A	258	THR	3.9
1	A	334	TYR	3.8
1	A	37	GLN	3.8
1	A	456	GLY	3.7
1	A	453	LYS	3.7
1	A	309	THR	3.7
1	A	102	ASN	3.6

Continued on next page...

Continued from previous page...

Mol	Chain	Res	Type	RSRZ
1	A	450	GLU	3.6
1	A	306	ALA	3.6
1	A	471	ILE	3.6
1	A	100	ASN	3.6
1	A	467	ARG	3.6
1	A	307	TYR	3.4
1	A	132	GLU	3.2
1	A	473	THR	3.1
1	A	451	VAL	3.0
1	A	34	ILE	2.9
1	A	460	THR	2.8
1	A	255	ASP	2.8
1	A	63	LYS	2.7
1	A	262	TYR	2.6
1	A	548	ILE	2.6
1	A	472	SER	2.5
1	A	462	ILE	2.4
1	A	533	VAL	2.4
1	A	311	LYS	2.3
1	A	31	SER	2.3
1	A	260	LEU	2.3
1	A	356	ALA	2.3
1	A	24	LEU	2.3
1	A	333	ASP	2.3
1	A	466	MET	2.3
1	A	454	SER	2.2
1	A	264	ARG	2.2
1	A	23	SER	2.1
1	A	60	THR	2.1
1	A	38	VAL	2.1

6.2 Non-standard residues in protein, DNA, RNA chains ⓘ

There are no non-standard protein/DNA/RNA residues in this entry.

6.3 Carbohydrates ⓘ

There are no carbohydrates in this entry.

6.4 Ligands [i](#)

In the following table, the Atoms column lists the number of modelled atoms in the group and the number defined in the chemical component dictionary. LLDF column lists the quality of electron density of the group with respect to its neighbouring residues in protein, DNA or RNA chains. The B-factors column lists the minimum, median, 95th percentile and maximum values of B factors of atoms in the group. The column labelled 'Q< 0.9' lists the number of atoms with occupancy less than 0.9.

Mol	Type	Chain	Res	Atoms	RSCC	RSR	LLDF	B-factors(\AA^2)	Q<0.9
2	FHP	A	900	20/20	-0.03	0.87	14.12	36,58,70,75	20

6.5 Other polymers [i](#)

There are no such residues in this entry.