



wwPDB X-ray Structure Validation Summary Report ⓘ

Feb 1, 2016 – 02:37 AM GMT

PDB ID : 2HXC
Title : Crystal structure of the benzylamine complex of aromatic amine dehydrogenase in N-semiquinone form
Authors : Roujeinikova, A.; Leys, D.
Deposited on : 2006-08-03
Resolution : 1.45 Å(reported)

This is a wwPDB X-ray Structure Validation Summary Report for a publicly released PDB entry.
We welcome your comments at validation@mail.wwpdb.org
A user guide is available at
<http://wwpdb.org/validation/2016/XrayValidationReportHelp>
with specific help available everywhere you see the ⓘ symbol.

The following versions of software and data (see [references ⓘ](#)) were used in the production of this report:

MolProbity : 4.02b-467
Mogul : 1.7 (RC4), CSD as536be (2015)
Xtriage (Phenix) : 1.9-1692
EDS : rb-20026688
Percentile statistics : 20151230.v01 (using entries in the PDB archive December 30th 2015)
Refmac : 5.8.0135
CCP4 : 6.5.0
Ideal geometry (proteins) : Engh & Huber (2001)
Ideal geometry (DNA, RNA) : Parkinson et al. (1996)
Validation Pipeline (wwPDB-VP) : trunk26865

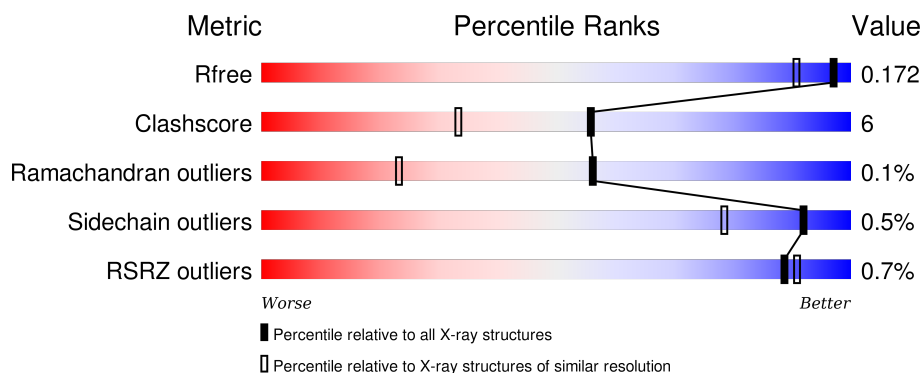
1 Overall quality at a glance ⓘ

The following experimental techniques were used to determine the structure:

X-RAY DIFFRACTION

The reported resolution of this entry is 1.45 Å.

Percentile scores (ranging between 0-100) for global validation metrics of the entry are shown in the following graphic. The table shows the number of entries on which the scores are based.



Metric	Whole archive (#Entries)	Similar resolution (#Entries, resolution range(Å))
R_{free}	91344	1278 (1.48-1.44)
Clashscore	102246	1336 (1.48-1.44)
Ramachandran outliers	100387	1320 (1.48-1.44)
Sidechain outliers	100360	1320 (1.48-1.44)
RSRZ outliers	91569	1279 (1.48-1.44)

The table below summarises the geometric issues observed across the polymeric chains and their fit to the electron density. The red, orange, yellow and green segments on the lower bar indicate the fraction of residues that contain outliers for ≥ 3 , 2, 1 and 0 types of geometric quality criteria. A grey segment represents the fraction of residues that are not modelled. The numeric value for each fraction is indicated below the corresponding segment, with a dot representing fractions $\leq 5\%$. The upper red bar (where present) indicates the fraction of residues that have poor fit to the electron density. The numeric value is given above the bar.

Mol	Chain	Length	Quality of chain
1	D	135	<div> <div></div> <div>69%13%19%</div> </div>
1	H	135	<div> <div></div> <div>73%9%19%</div> </div>
2	A	361	<div> <div></div> <div>89%10%..</div> </div>
2	B	361	<div> <div></div> <div>92%7%</div> </div>

The following table lists non-polymeric compounds, carbohydrate monomers and non-standard

residues in protein, DNA, RNA chains that are outliers for geometric or electron-density-fit criteria:

Mol	Type	Chain	Res	Chirality	Geometry	Clashes	Electron density
1	TTQ	D	109[B]	-	-	X	-
3	ABN	D	1370[B]	-	-	X	-
3	ABN	H	1301	-	-	X	X

2 Entry composition [i](#)

There are 4 unique types of molecules in this entry. The entry contains 8488 atoms, of which 0 are hydrogens and 0 are deuteriums.

In the tables below, the ZeroOcc column contains the number of atoms modelled with zero occupancy, the AltConf column contains the number of residues with at least one atom in alternate conformation and the Trace column contains the number of residues modelled with at most 2 atoms.

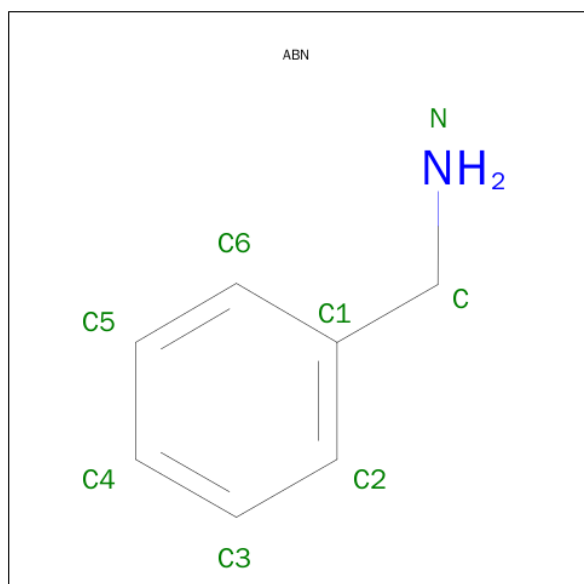
- Molecule 1 is a protein called Aromatic amine dehydrogenase.

Mol	Chain	Residues	Atoms					ZeroOcc	AltConf	Trace
1	D	110	Total	C	N	O	S	0	1	0
			851	522	149	165	15			
1	H	110	Total	C	N	O	S	0	1	0
			845	516	149	165	15			

- Molecule 2 is a protein called Aromatic amine dehydrogenase.

Mol	Chain	Residues	Atoms					ZeroOcc	AltConf	Trace
2	A	359	Total	C	N	O	S	0	1	0
			2797	1764	486	534	13			
2	B	360	Total	C	N	O	S	0	1	0
			2787	1758	482	534	13			

- Molecule 3 is BENZYLAMINE (three-letter code: ABN) (formula: C_7H_9N).



Mol	Chain	Residues	Atoms	ZeroOcc	AltConf
3	D	1	Total C N 8 7 1	0	1
3	D	1	Total C N 8 7 1	0	1
3	H	1	Total C N 8 7 1	0	0

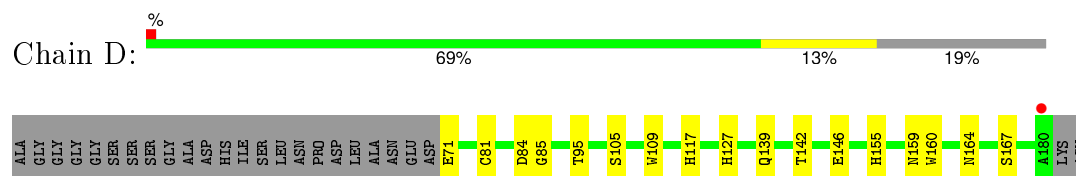
- Molecule 4 is water.

Mol	Chain	Residues	Atoms	ZeroOcc	AltConf
4	A	504	Total O 504 504	0	0
4	B	430	Total O 430 430	0	0
4	D	127	Total O 127 127	0	0
4	H	123	Total O 123 123	0	0

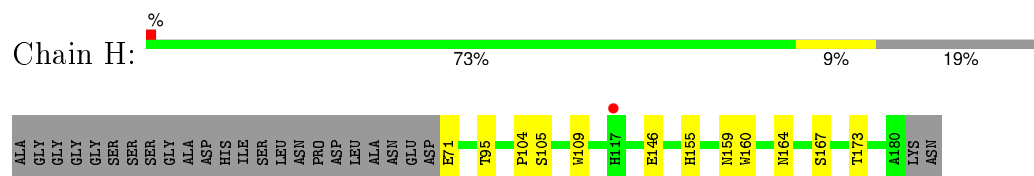
3 Residue-property plots [i](#)

These plots are drawn for all protein, RNA and DNA chains in the entry. The first graphic for a chain summarises the proportions of errors displayed in the second graphic. The second graphic shows the sequence view annotated by issues in geometry and electron density. Residues are color-coded according to the number of geometric quality criteria for which they contain at least one outlier: green = 0, yellow = 1, orange = 2 and red = 3 or more. A red dot above a residue indicates a poor fit to the electron density ($RSRZ > 2$). Stretches of 2 or more consecutive residues without any outlier are shown as a green connector. Residues present in the sample, but not in the model, are shown in grey.

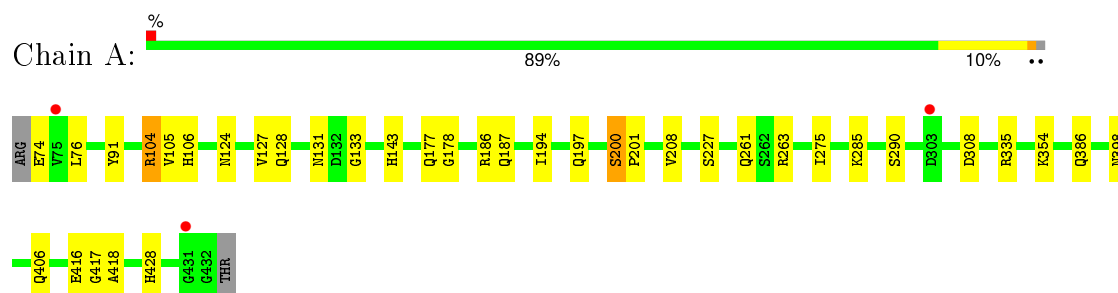
- Molecule 1: Aromatic amine dehydrogenase



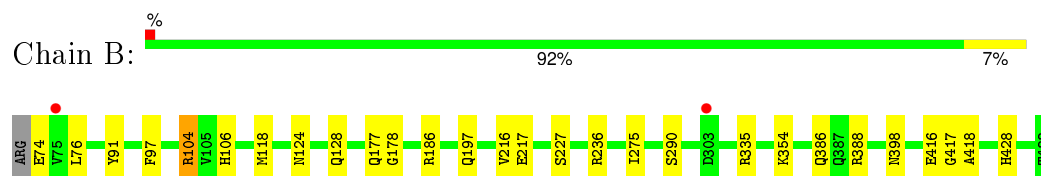
- Molecule 1: Aromatic amine dehydrogenase



- Molecule 2: Aromatic amine dehydrogenase



- Molecule 2: Aromatic amine dehydrogenase



4 Data and refinement statistics

Property	Value	Source
Space group	P 1 21 1	Depositor
Cell constants a, b, c, α , β , γ	70.79Å 88.59Å 79.99Å 90.00° 90.30° 90.00°	Depositor
Resolution (Å)	15.00 – 1.45 14.99 – 1.45	Depositor EDS
% Data completeness (in resolution range)	99.8 (15.00-1.45) 99.7 (14.99-1.45)	Depositor EDS
R_{merge}	0.06	Depositor
R_{sym}	0.06	Depositor
$\langle I/\sigma(I) \rangle$ ¹	2.99 (at 1.45Å)	Xtriage
Refinement program	REFMAC 5.2.0005	Depositor
R, R_{free}	0.147 , 0.172 0.148 , 0.172	Depositor DCC
R_{free} test set	8689 reflections (5.26%)	DCC
Wilson B-factor (Å ²)	11.8	Xtriage
Anisotropy	0.465	Xtriage
Bulk solvent k_{sol} (e/Å ³), B_{sol} (Å ²)	0.41 , 61.9	EDS
Estimated twinning fraction	0.017 for h,-k,-l	Xtriage
L-test for twinning ²	$\langle L \rangle = 0.50$, $\langle L^2 \rangle = 0.33$	Xtriage
Outliers	0 of 173822 reflections	Xtriage
F_o, F_c correlation	0.97	EDS
Total number of atoms	8488	wwPDB-VP
Average B, all atoms (Å ²)	16.0	wwPDB-VP

Xtriage's analysis on translational NCS is as follows: *The largest off-origin peak in the Patterson function is 4.93% of the height of the origin peak. No significant pseudotranslation is detected.*

¹Intensities estimated from amplitudes.

²Theoretical values of $\langle |L| \rangle$, $\langle L^2 \rangle$ for acentric reflections are 0.5, 0.375 respectively for untwinned datasets, and 0.333, 0.2 for perfectly twinned datasets.

5 Model quality [i](#)

5.1 Standard geometry [i](#)

Bond lengths and bond angles in the following residue types are not validated in this section: TTQ, ABN

The Z score for a bond length (or angle) is the number of standard deviations the observed value is removed from the expected value. A bond length (or angle) with $|Z| > 5$ is considered an outlier worth inspection. RMSZ is the root-mean-square of all Z scores of the bond lengths (or angles).

Mol	Chain	Bond lengths		Bond angles	
		RMSZ	# Z >5	RMSZ	# Z >5
1	D	0.65	0/846	0.69	0/1151
1	H	0.62	0/854	0.65	0/1163
2	A	0.61	0/2864	0.68	0/3884
2	B	0.59	0/2856	0.64	0/3874
All	All	0.61	0/7420	0.66	0/10072

There are no bond length outliers.

There are no bond angle outliers.

There are no chirality outliers.

There are no planarity outliers.

5.2 Too-close contacts [i](#)

In the following table, the Non-H and H(model) columns list the number of non-hydrogen atoms and hydrogen atoms in the chain respectively. The H(added) column lists the number of hydrogen atoms added and optimized by MolProbity. The Clashes column lists the number of clashes within the asymmetric unit, whereas Symm-Clashes lists symmetry related clashes.

Mol	Chain	Non-H	H(model)	H(added)	Clashes	Symm-Clashes
1	D	851	0	744	26	0
1	H	845	0	746	16	0
2	A	2797	0	2734	30	0
2	B	2787	0	2704	25	0
3	D	16	0	17	8	0
3	H	8	0	9	4	0
4	A	504	0	0	8	0
4	B	430	0	0	5	0
4	D	127	0	0	9	0

Continued on next page...

Continued from previous page...

Mol	Chain	Non-H	H(model)	H(added)	Clashes	Symm-Clashes
4	H	123	0	0	4	0
All	All	8488	0	6954	89	0

The all-atom clashscore is defined as the number of clashes found per 1000 atoms (including hydrogen atoms). The all-atom clashscore for this structure is 6.

The worst 5 of 89 close contacts within the same asymmetric unit are listed below, sorted by their clash magnitude.

Atom-1	Atom-2	Interatomic distance (Å)	Clash overlap (Å)
2:B:217:GLU:HB3	4:B:597:HOH:O	1.42	1.17
1:D:84:ASP:O	3:D:1369[A]:ABN:H2A	1.54	1.05
1:H:95[A]:THR:HG22	4:H:1322:HOH:O	1.76	0.84
2:A:124:ASN:HD21	2:A:178:GLY:H	1.30	0.79
1:D:95:THR:HG22	4:D:1391:HOH:O	1.83	0.79

There are no symmetry-related clashes.

5.3 Torsion angles [i](#)

5.3.1 Protein backbone [i](#)

In the following table, the Percentiles column shows the percent Ramachandran outliers of the chain as a percentile score with respect to all X-ray entries followed by that with respect to entries of similar resolution.

The Analysed column shows the number of residues for which the backbone conformation was analysed, and the total number of residues.

Mol	Chain	Analysed	Favoured	Allowed	Outliers	Percentiles	
1	D	107/135 (79%)	105 (98%)	2 (2%)	0	100	100
1	H	108/135 (80%)	105 (97%)	3 (3%)	0	100	100
2	A	358/361 (99%)	346 (97%)	11 (3%)	1 (0%)	46	17
2	B	358/361 (99%)	345 (96%)	13 (4%)	0	100	100
All	All	931/992 (94%)	901 (97%)	29 (3%)	1 (0%)	56	23

All (1) Ramachandran outliers are listed below:

Mol	Chain	Res	Type
2	A	200	SER

5.3.2 Protein sidechains [i](#)

In the following table, the Percentiles column shows the percent sidechain outliers of the chain as a percentile score with respect to all X-ray entries followed by that with respect to entries of similar resolution.

The Analysed column shows the number of residues for which the sidechain conformation was analysed, and the total number of residues.

Mol	Chain	Analysed	Rotameric	Outliers	Percentiles	
1	D	94/112 (84%)	94 (100%)	0	100	100
1	H	96/112 (86%)	96 (100%)	0	100	100
2	A	303/304 (100%)	300 (99%)	3 (1%)	82	56
2	B	301/304 (99%)	299 (99%)	2 (1%)	88	69
All	All	794/832 (95%)	789 (99%)	5 (1%)	92	73

All (5) residues with a non-rotameric sidechain are listed below:

Mol	Chain	Res	Type
2	A	104	ARG
2	A	406[A]	GLN
2	A	406[B]	GLN
2	B	104	ARG
2	B	388	ARG

Some sidechains can be flipped to improve hydrogen bonding and reduce clashes. 5 of 39 such sidechains are listed below:

Mol	Chain	Res	Type
2	A	197	GLN
2	A	424	GLN
2	B	424	GLN
2	A	231	GLN
2	A	386	GLN

5.3.3 RNA [i](#)

There are no RNA molecules in this entry.

5.4 Non-standard residues in protein, DNA, RNA chains [i](#)

3 non-standard protein/DNA/RNA residues are modelled in this entry.

In the following table, the Counts columns list the number of bonds (or angles) for which Mogul statistics could be retrieved, the number of bonds (or angles) that are observed in the model and the number of bonds (or angles) that are defined in the chemical component dictionary. The Link column lists molecule types, if any, to which the group is linked. The Z score for a bond length (or angle) is the number of standard deviations the observed value is removed from the expected value. A bond length (or angle) with $|Z| > 2$ is considered an outlier worth inspection. RMSZ is the root-mean-square of all Z scores of the bond lengths (or angles).

Mol	Type	Chain	Res	Link	Bond lengths			Bond angles		
					Counts	RMSZ	$\# Z > 2$	Counts	RMSZ	$\# Z > 2$
1	TTQ	D	109[A]	1,3	13,16,18	1.00	1 (7%)	10,22,26	1.39	2 (20%)
1	TTQ	D	109[B]	1	14,17,18	1.30	1 (7%)	10,24,26	1.60	4 (40%)
1	TTQ	H	109	1	14,17,18	1.22	1 (7%)	10,24,26	1.69	4 (40%)

In the following table, the Chirals column lists the number of chiral outliers, the number of chiral centers analysed, the number of these observed in the model and the number defined in the chemical component dictionary. Similar counts are reported in the Torsion and Rings columns. '-' means no outliers of that kind were identified.

Mol	Type	Chain	Res	Link	Chirals	Torsions	Rings
1	TTQ	D	109[A]	1,3	-	0/3/6/8	0/2/2/2
1	TTQ	D	109[B]	1	-	0/3/6/8	0/2/2/2
1	TTQ	H	109	1	-	0/3/6/8	0/2/2/2

All (3) bond length outliers are listed below:

Mol	Chain	Res	Type	Atoms	Z	Observed(Å)	Ideal(Å)
1	D	109[B]	TTQ	CH2-CZ2	-3.37	1.36	1.40
1	H	109	TTQ	CH2-CZ2	-2.90	1.37	1.40
1	D	109[A]	TTQ	CB-CG	2.06	1.57	1.51

The worst 5 of 10 bond angle outliers are listed below:

Mol	Chain	Res	Type	Atoms	Z	Observed(°)	Ideal(°)
1	H	109	TTQ	CB-CG-CD1	-2.85	124.45	127.97
1	D	109[B]	TTQ	CZ3-CE3-CD2	-2.45	117.91	121.13
1	D	109[B]	TTQ	CB-CG-CD1	-2.39	125.01	127.97
1	D	109[A]	TTQ	CB-CG-CD1	-2.27	125.17	127.97
1	H	109	TTQ	CG-CD2-CE2	-2.21	106.00	109.82

There are no chirality outliers.

There are no torsion outliers.

There are no ring outliers.

3 monomers are involved in 15 short contacts:

Mol	Chain	Res	Type	Clashes	Symm-Clashes
1	D	109[A]	TTQ	2	0
1	D	109[B]	TTQ	7	0
1	H	109	TTQ	6	0

5.5 Carbohydrates [i](#)

There are no carbohydrates in this entry.

5.6 Ligand geometry [i](#)

3 ligands are modelled in this entry.

In the following table, the Counts columns list the number of bonds (or angles) for which Mogul statistics could be retrieved, the number of bonds (or angles) that are observed in the model and the number of bonds (or angles) that are defined in the chemical component dictionary. The Link column lists molecule types, if any, to which the group is linked. The Z score for a bond length (or angle) is the number of standard deviations the observed value is removed from the expected value. A bond length (or angle) with $|Z| > 2$ is considered an outlier worth inspection. RMSZ is the root-mean-square of all Z scores of the bond lengths (or angles).

Mol	Type	Chain	Res	Link	Bond lengths			Bond angles		
					Counts	RMSZ	$\# Z > 2$	Counts	RMSZ	$\# Z > 2$
3	ABN	D	1369[A]	1	8,8,8	0.64	0	8,9,9	0.58	0
3	ABN	D	1370[B]	-	8,8,8	0.62	0	8,9,9	0.32	0
3	ABN	H	1301	-	8,8,8	0.55	0	8,9,9	0.70	0

In the following table, the Chirals column lists the number of chiral outliers, the number of chiral centers analysed, the number of these observed in the model and the number defined in the chemical component dictionary. Similar counts are reported in the Torsion and Rings columns. '-' means no outliers of that kind were identified.

Mol	Type	Chain	Res	Link	Chirals	Torsions	Rings
3	ABN	D	1369[A]	1	-	0/2/2/2	0/1/1/1
3	ABN	D	1370[B]	-	-	0/2/2/2	0/1/1/1
3	ABN	H	1301	-	-	0/2/2/2	0/1/1/1

There are no bond length outliers.

There are no bond angle outliers.

There are no chirality outliers.

There are no torsion outliers.

There are no ring outliers.

3 monomers are involved in 12 short contacts:

Mol	Chain	Res	Type	Clashes	Symm-Clashes
3	D	1369[A]	ABN	2	0
3	D	1370[B]	ABN	6	0
3	H	1301	ABN	4	0

5.7 Other polymers [i](#)

There are no such residues in this entry.

5.8 Polymer linkage issues [i](#)

There are no chain breaks in this entry.

6 Fit of model and data ⓘ

6.1 Protein, DNA and RNA chains ⓘ

In the following table, the column labelled ‘#RSRZ> 2’ contains the number (and percentage) of RSRZ outliers, followed by percent RSRZ outliers for the chain as percentile scores relative to all X-ray entries and entries of similar resolution. The OWAB column contains the minimum, median, 95th percentile and maximum values of the occupancy-weighted average B-factor per residue. The column labelled ‘Q< 0.9’ lists the number of (and percentage) of residues with an average occupancy less than 0.9.

Mol	Chain	Analysed	<RSRZ>	#RSRZ>2	OWAB(Å ²)	Q<0.9
1	D	109/135 (80%)	-0.47	1 (0%) 85 87	8, 14, 25, 35	0
1	H	109/135 (80%)	-0.34	1 (0%) 85 87	8, 15, 30, 43	0
2	A	359/361 (99%)	-0.63	3 (0%) 87 89	6, 11, 23, 35	0
2	B	360/361 (99%)	-0.39	2 (0%) 90 92	7, 16, 28, 38	0
All	All	937/992 (94%)	-0.49	7 (0%) 89 91	6, 13, 27, 43	0

The worst 5 of 7 RSRZ outliers are listed below:

Mol	Chain	Res	Type	RSRZ
2	A	75	VAL	3.3
2	A	303	ASP	3.0
2	A	431	GLY	3.0
1	H	117	HIS	2.9
2	B	75	VAL	2.4

6.2 Non-standard residues in protein, DNA, RNA chains ⓘ

In the following table, the Atoms column lists the number of modelled atoms in the group and the number defined in the chemical component dictionary. LLDF column lists the quality of electron density of the group with respect to its neighbouring residues in protein, DNA or RNA chains. The B-factors column lists the minimum, median, 95th percentile and maximum values of B factors of atoms in the group. The column labelled ‘Q< 0.9’ lists the number of atoms with occupancy less than 0.9.

Mol	Type	Chain	Res	Atoms	RSCC	RSR	LLDF	B-factors(Å ²)	Q<0.9
1	TTQ	D	109[A]	15/17	0.95	0.07	-	11,12,14,14	11
1	TTQ	D	109[B]	16/17	0.95	0.07	-	12,14,17,28	12
1	TTQ	H	109	16/17	0.94	0.07	-	11,13,18,32	0

6.3 Carbohydrates [i](#)

There are no carbohydrates in this entry.

6.4 Ligands [i](#)

In the following table, the Atoms column lists the number of modelled atoms in the group and the number defined in the chemical component dictionary. LLDF column lists the quality of electron density of the group with respect to its neighbouring residues in protein, DNA or RNA chains. The B-factors column lists the minimum, median, 95th percentile and maximum values of B factors of atoms in the group. The column labelled 'Q< 0.9' lists the number of atoms with occupancy less than 0.9.

Mol	Type	Chain	Res	Atoms	RSCC	RSR	LLDF	B-factors(\AA^2)	Q<0.9
3	ABN	H	1301	8/8	0.70	0.20	12.23	14,21,24,27	8
3	ABN	D	1369[A]	8/8	0.95	0.07	0.84	10,16,19,19	8
3	ABN	D	1370[B]	8/8	0.97	0.06	0.44	11,17,19,20	8

6.5 Other polymers [i](#)

There are no such residues in this entry.