



Full wwPDB X-ray Structure Validation Report ⓘ

Jan 31, 2016 – 07:56 PM GMT

PDB ID : 1HY3
Title : CRYSTAL STRUCTURE OF HUMAN ESTROGEN SULFOTRANSFERASE V269E MUTANT IN THE PRESENCE OF PAPS
Authors : Pedersen, L.C.; Petrochenko, E.V.; Shevtsov, S.; Negishi, M.
Deposited on : 2001-01-17
Resolution : 1.80 Å(reported)

This is a Full wwPDB X-ray Structure Validation Report for a publicly released PDB entry.
We welcome your comments at validation@mail.wwpdb.org
A user guide is available at
<http://wwpdb.org/validation/2016/XrayValidationReportHelp>
with specific help available everywhere you see the ⓘ symbol.

The following versions of software and data (see [references ⓘ](#)) were used in the production of this report:

MolProbity : 4.02b-467
Mogul : 1.7 (RC4), CSD as536be (2015)
Xtriage (Phenix) : **NOT EXECUTED**
EDS : **NOT EXECUTED**
Percentile statistics : 20151230.v01 (using entries in the PDB archive December 30th 2015)
Ideal geometry (proteins) : Engh & Huber (2001)
Ideal geometry (DNA, RNA) : Parkinson et al. (1996)
Validation Pipeline (wwPDB-VP) : trunk26865

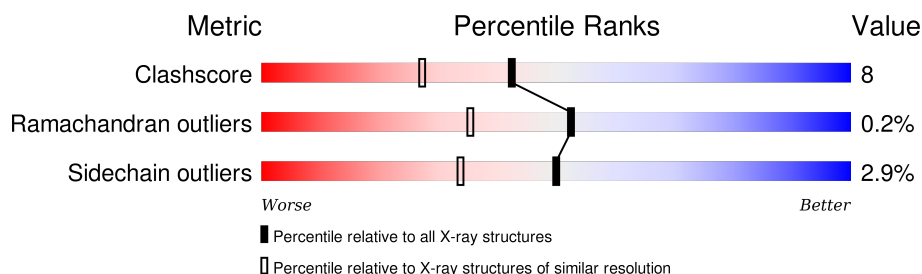
1 Overall quality at a glance

The following experimental techniques were used to determine the structure:

X-RAY DIFFRACTION

The reported resolution of this entry is 1.80 Å.

Percentile scores (ranging between 0-100) for global validation metrics of the entry are shown in the following graphic. The table shows the number of entries on which the scores are based.



Metric	Whole archive (#Entries)	Similar resolution (#Entries, resolution range(Å))
Clashscore	102246	5383 (1.80-1.80)
Ramachandran outliers	100387	5320 (1.80-1.80)
Sidechain outliers	100360	5319 (1.80-1.80)

The table below summarises the geometric issues observed across the polymeric chains and their fit to the electron density. The red, orange, yellow and green segments on the lower bar indicate the fraction of residues that contain outliers for ≥ 3 , 2, 1 and 0 types of geometric quality criteria. A grey segment represents the fraction of residues that are not modelled. The numeric value for each fraction is indicated below the corresponding segment, with a dot representing fractions $\leq 5\%$. The upper red bar (where present) indicates the fraction of residues that have poor fit to the electron density. The numeric value is given above the bar.

Note EDS was not executed.

Mol	Chain	Length	Quality of chain
1	A	294	 83% 13% ••
1	B	294	 81% 16% ••

2 Entry composition [i](#)

There are 3 unique types of molecules in this entry. The entry contains 5300 atoms, of which 0 are hydrogens and 0 are deuteriums.

In the tables below, the ZeroOcc column contains the number of atoms modelled with zero occupancy, the AltConf column contains the number of residues with at least one atom in alternate conformation and the Trace column contains the number of residues modelled with at most 2 atoms.

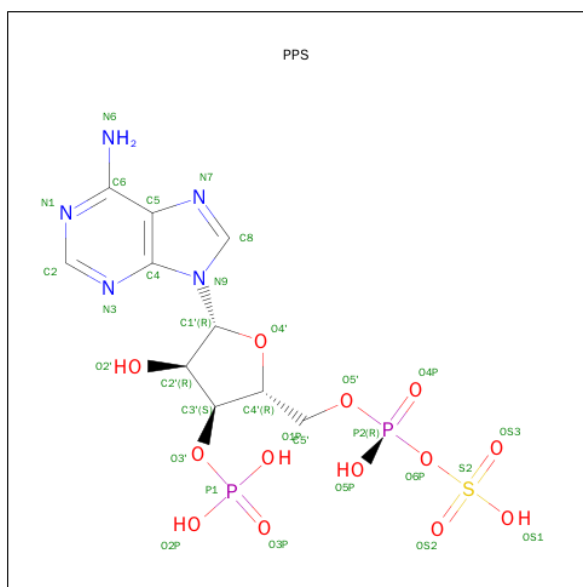
- Molecule 1 is a protein called ESTROGEN SULFOTRANSFERASE.

Mol	Chain	Residues	Atoms					ZeroOcc	AltConf	Trace
1	A	287	Total	C	N	O	S	0	0	0
			2396	1562	391	429	14			
1	B	288	Total	C	N	O	S	0	0	0
			2392	1560	391	427	14			

There are 2 discrepancies between the modelled and reference sequences:

Chain	Residue	Modelled	Actual	Comment	Reference
A	269	GLU	VAL	ENGINEERED	UNP P49888
B	269	GLU	VAL	ENGINEERED	UNP P49888

- Molecule 2 is 3'-PHOSPHATE-ADENOSINE-5'-PHOSPHATE SULFATE (three-letter code: PPS) (formula: C₁₀H₁₅N₅O₁₃P₂S).



Mol	Chain	Residues	Atoms					ZeroOcc	AltConf
2	B	1	Total	C	N	O	P S	0	0
			31	10	5	13	2 1		

Continued on next page...

Continued from previous page...

Mol	Chain	Residues	Atoms						ZeroOcc	AltConf
2	A	1	Total	C	N	O	P	S	0	0
			31	10	5	13	2	1		

- Molecule 3 is water.

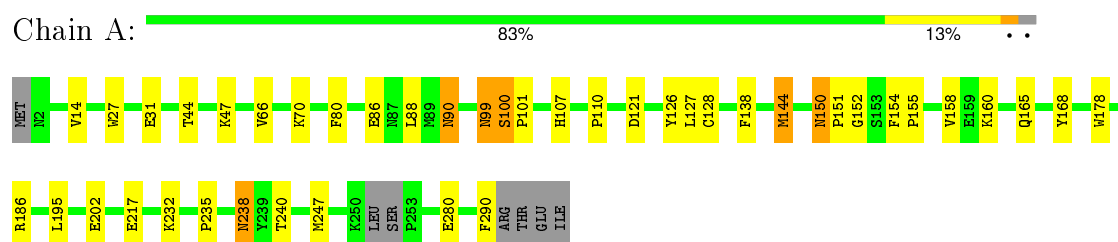
Mol	Chain	Residues	Atoms		ZeroOcc	AltConf
3	A	258	Total	O	0	0
			258	258		
3	B	192	Total	O	0	0
			192	192		

3 Residue-property plots

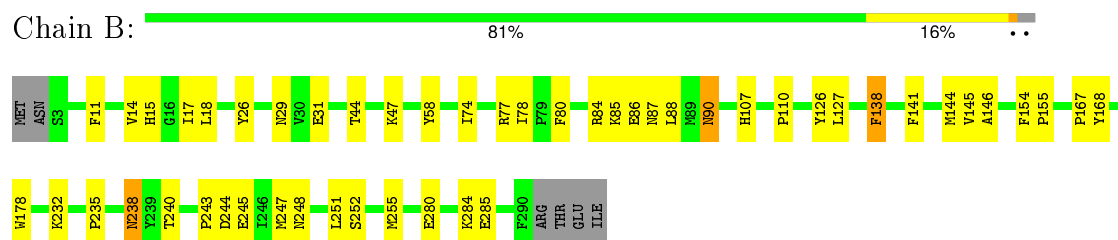
These plots are drawn for all protein, RNA and DNA chains in the entry. The first graphic for a chain summarises the proportions of errors displayed in the second graphic. The second graphic shows the sequence view annotated by issues in geometry and electron density. Residues are color-coded according to the number of geometric quality criteria for which they contain at least one outlier: green = 0, yellow = 1, orange = 2 and red = 3 or more. A red dot above a residue indicates a poor fit to the electron density ($RSRZ > 2$). Stretches of 2 or more consecutive residues without any outlier are shown as a green connector. Residues present in the sample, but not in the model, are shown in grey.

Note EDS was not executed.

• Molecule 1: ESTROGEN SULFOTRANSFERASE



• Molecule 1: ESTROGEN SULFOTRANSFERASE



4 Data and refinement statistics

Xtriage (Phenix) and EDS were not executed - this section will therefore be incomplete.

Property	Value	Source
Space group	P 1 21 1	Depositor
Cell constants a, b, c, α , β , γ	61.92Å 97.26Å 62.73Å 90.00° 91.93° 90.00°	Depositor
Resolution (Å)	22.54 – 1.80	Depositor
% Data completeness (in resolution range)	89.9 (22.54-1.80)	Depositor
R_{merge}	0.05	Depositor
R_{sym}	0.05	Depositor
Refinement program	CNS 1.0	Depositor
R, R_{free}	0.197 , 0.217	Depositor
Estimated twinning fraction	No twinning to report.	Xtriage
Total number of atoms	5300	wwPDB-VP
Average B, all atoms (Å ²)	27.0	wwPDB-VP

5 Model quality [i](#)

5.1 Standard geometry [i](#)

Bond lengths and bond angles in the following residue types are not validated in this section: PPS

The Z score for a bond length (or angle) is the number of standard deviations the observed value is removed from the expected value. A bond length (or angle) with $|Z| > 5$ is considered an outlier worth inspection. RMSZ is the root-mean-square of all Z scores of the bond lengths (or angles).

Mol	Chain	Bond lengths		Bond angles	
		RMSZ	$\# Z > 5$	RMSZ	$\# Z > 5$
1	A	0.37	0/2468	0.59	0/3333
1	B	0.35	0/2465	0.59	1/3333 (0.0%)
All	All	0.36	0/4933	0.59	1/6666 (0.0%)

There are no bond length outliers.

All (1) bond angle outliers are listed below:

Mol	Chain	Res	Type	Atoms	Z	Observed(°)	Ideal(°)
1	B	247	MET	CG-SD-CE	5.85	109.56	100.20

There are no chirality outliers.

There are no planarity outliers.

5.2 Too-close contacts [i](#)

In the following table, the Non-H and H(model) columns list the number of non-hydrogen atoms and hydrogen atoms in the chain respectively. The H(added) column lists the number of hydrogen atoms added and optimized by MolProbity. The Clashes column lists the number of clashes within the asymmetric unit, whereas Symm-Clashes lists symmetry related clashes.

Mol	Chain	Non-H	H(model)	H(added)	Clashes	Symm-Clashes
1	A	2396	0	2325	40	0
1	B	2392	0	2315	39	0
2	A	31	0	11	1	0
2	B	31	0	11	0	0
3	A	258	0	0	5	0
3	B	192	0	0	0	0
All	All	5300	0	4662	79	0

The all-atom clashscore is defined as the number of clashes found per 1000 atoms (including hydrogen atoms). The all-atom clashscore for this structure is 8.

All (79) close contacts within the same asymmetric unit are listed below, sorted by their clash magnitude.

Atom-1	Atom-2	Interatomic distance (Å)	Clash overlap (Å)
1:A:128:CYS:SG	1:A:290:PHE:CZ	2.80	0.74
1:A:100:SER:HB3	1:A:101:PRO:HA	1.71	0.73
1:A:128:CYS:SG	1:A:290:PHE:CE2	2.91	0.64
1:A:217:GLU:HG3	3:A:851:HOH:O	1.95	0.64
1:B:85:LYS:HG2	1:B:88:LEU:HD22	1.81	0.63
1:B:248:ASN:ND2	1:B:251:LEU:HG	2.14	0.63
1:B:238:ASN:C	1:B:238:ASN:HD22	2.03	0.61
1:A:150:ASN:ND2	1:A:152:GLY:H	1.98	0.61
1:B:110:PRO:HD3	1:B:178:TRP:CD1	2.39	0.57
1:A:107:HIS:HB2	1:A:168:TYR:CZ	2.40	0.57
1:A:99:ASN:ND2	3:A:705:HOH:O	2.38	0.57
1:B:44:THR:O	1:B:107:HIS:HA	2.05	0.56
1:B:141:PHE:CE1	1:B:145:VAL:HG21	2.40	0.56
1:A:44:THR:HG22	1:A:127:LEU:HB3	1.88	0.55
1:A:44:THR:O	1:A:107:HIS:HA	2.06	0.55
1:B:238:ASN:ND2	1:B:240:THR:H	2.04	0.55
1:A:128:CYS:SG	1:A:290:PHE:HZ	2.26	0.54
1:A:66:VAL:HG12	1:A:70:LYS:HE2	1.90	0.54
1:A:90:ASN:HD22	1:A:90:ASN:C	2.10	0.54
1:A:99:ASN:O	1:A:100:SER:O	2.26	0.53
1:B:87:ASN:C	1:B:88:LEU:HD12	2.29	0.53
1:A:107:HIS:HB2	1:A:168:TYR:CE2	2.44	0.53
1:A:88:LEU:HD12	1:A:88:LEU:N	2.25	0.52
1:B:107:HIS:HB2	1:B:168:TYR:CE2	2.45	0.51
1:A:110:PRO:HG3	1:A:178:TRP:CD2	2.47	0.49
1:B:90:ASN:C	1:B:90:ASN:HD22	2.14	0.49
1:A:238:ASN:C	1:A:238:ASN:HD22	2.17	0.48
1:A:195:LEU:HD12	1:A:202:GLU:HG3	1.96	0.48
1:A:150:ASN:HD22	1:A:151:PRO:N	2.11	0.48
1:A:150:ASN:HD22	1:A:150:ASN:C	2.15	0.48
1:A:99:ASN:ND2	1:A:99:ASN:O	2.46	0.48
1:B:232:LYS:HA	1:B:255:MET:HG3	1.96	0.47
1:B:15:HIS:NE2	1:B:31:GLU:OE2	2.43	0.47
1:B:85:LYS:CG	1:B:88:LEU:HD22	2.44	0.47
1:B:26:TYR:HB3	1:B:29:ASN:HD22	1.80	0.47
1:A:27:TRP:HZ2	3:A:755:HOH:O	1.98	0.46
1:B:87:ASN:O	1:B:88:LEU:HD12	2.15	0.46

Continued on next page...

Continued from previous page...

Atom-1	Atom-2	Interatomic distance (Å)	Clash overlap (Å)
1:B:74:ILE:HD11	1:B:78:ILE:HD12	1.96	0.46
1:B:167:PRO:O	1:B:168:TYR:HB2	2.16	0.46
1:B:284:LYS:HE3	1:B:285:GLU:OE2	2.16	0.46
1:B:58:TYR:CE1	1:B:77:ARG:HB3	2.51	0.46
1:B:44:THR:HG22	1:B:127:LEU:HB3	1.97	0.46
1:B:14:VAL:O	1:B:14:VAL:HG13	2.16	0.45
1:B:107:HIS:HB2	1:B:168:TYR:CZ	2.51	0.45
1:B:154:PHE:HB3	1:B:155:PRO:HD3	1.99	0.45
1:A:235:PRO:HA	1:A:238:ASN:HD21	1.82	0.45
1:A:66:VAL:CG1	1:A:70:LYS:HE2	2.47	0.45
1:B:238:ASN:C	1:B:238:ASN:ND2	2.70	0.45
1:B:146:ALA:HB2	1:B:245:GLU:O	2.17	0.45
1:A:235:PRO:HA	1:A:238:ASN:ND2	2.32	0.44
1:B:144:MET:HE2	1:B:252:SER:O	2.17	0.44
1:A:150:ASN:HD22	1:A:152:GLY:H	1.63	0.44
1:B:245:GLU:CD	1:B:245:GLU:H	2.21	0.43
1:B:110:PRO:HD3	1:B:178:TRP:NE1	2.34	0.43
1:B:26:TYR:CG	1:B:84:ARG:HD3	2.53	0.43
1:A:238:ASN:ND2	1:A:240:THR:H	2.17	0.43
1:B:235:PRO:HA	1:B:238:ASN:HD21	1.84	0.42
1:A:232:LYS:NZ	3:A:832:HOH:O	2.51	0.42
1:A:126:TYR:CE1	1:A:178:TRP:CD1	3.07	0.42
1:B:126:TYR:CE1	1:B:178:TRP:CD1	3.07	0.42
1:B:243:PRO:HB2	1:B:245:GLU:OE1	2.20	0.42
1:B:47:LYS:HG3	1:B:138:PHE:HA	2.00	0.42
1:B:86:GLU:HG2	1:B:87:ASN:ND2	2.34	0.42
1:A:14:VAL:O	1:A:14:VAL:HG13	2.19	0.42
1:A:121:ASP:OD2	1:A:186:ARG:HD3	2.19	0.42
1:A:70:LYS:HD3	3:A:833:HOH:O	2.19	0.42
1:B:17:ILE:O	1:B:17:ILE:HG13	2.19	0.42
1:A:47:LYS:HE2	2:A:602:PPS:H5'1	2.02	0.42
1:A:99:ASN:HD22	1:A:99:ASN:C	2.23	0.42
1:B:238:ASN:HD22	1:B:240:THR:H	1.68	0.41
1:B:235:PRO:HA	1:B:238:ASN:ND2	2.35	0.41
1:B:11:PHE:HB3	1:B:18:LEU:HG	2.02	0.41
1:A:160:LYS:CE	1:A:165:GLN:OE1	2.67	0.41
1:B:11:PHE:CE2	1:B:167:PRO:HG3	2.56	0.41
1:A:88:LEU:N	1:A:88:LEU:CD1	2.84	0.41
1:A:154:PHE:O	1:A:158:VAL:HG23	2.20	0.41
1:A:144:MET:SD	1:A:247:MET:HG3	2.61	0.41
1:A:154:PHE:HB3	1:A:155:PRO:HD3	2.03	0.40

Continued on next page...

Continued from previous page...

Atom-1	Atom-2	Interatomic distance (Å)	Clash overlap (Å)
1:A:86:GLU:OE2	1:A:86:GLU:HA	2.20	0.40

There are no symmetry-related clashes.

5.3 Torsion angles [i](#)

5.3.1 Protein backbone [i](#)

In the following table, the Percentiles column shows the percent Ramachandran outliers of the chain as a percentile score with respect to all X-ray entries followed by that with respect to entries of similar resolution.

The Analysed column shows the number of residues for which the backbone conformation was analysed, and the total number of residues.

Mol	Chain	Analysed	Favoured	Allowed	Outliers	Percentiles	
1	A	283/294 (96%)	271 (96%)	11 (4%)	1 (0%)	39	23
1	B	286/294 (97%)	279 (98%)	7 (2%)	0	100	100
All	All	569/588 (97%)	550 (97%)	18 (3%)	1 (0%)	52	35

All (1) Ramachandran outliers are listed below:

Mol	Chain	Res	Type
1	A	100	SER

5.3.2 Protein sidechains [i](#)

In the following table, the Percentiles column shows the percent sidechain outliers of the chain as a percentile score with respect to all X-ray entries followed by that with respect to entries of similar resolution.

The Analysed column shows the number of residues for which the sidechain conformation was analysed, and the total number of residues.

Mol	Chain	Analysed	Rotameric	Outliers	Percentiles	
1	A	261/275 (95%)	252 (97%)	9 (3%)	44	26
1	B	259/275 (94%)	253 (98%)	6 (2%)	58	42
All	All	520/550 (94%)	505 (97%)	15 (3%)	50	34

All (15) residues with a non-rotameric sidechain are listed below:

Mol	Chain	Res	Type
1	A	31	GLU
1	A	80	PHE
1	A	90	ASN
1	A	99	ASN
1	A	138	PHE
1	A	144	MET
1	A	150	ASN
1	A	238	ASN
1	A	280	GLU
1	B	80	PHE
1	B	90	ASN
1	B	138	PHE
1	B	238	ASN
1	B	244	ASP
1	B	280	GLU

Some sidechains can be flipped to improve hydrogen bonding and reduce clashes. All (14) such sidechains are listed below:

Mol	Chain	Res	Type
1	A	29	ASN
1	A	90	ASN
1	A	99	ASN
1	A	150	ASN
1	A	233	ASN
1	A	238	ASN
1	B	29	ASN
1	B	87	ASN
1	B	90	ASN
1	B	150	ASN
1	B	165	GLN
1	B	225	HIS
1	B	233	ASN
1	B	238	ASN

5.3.3 RNA ⓘ

There are no RNA molecules in this entry.

5.4 Non-standard residues in protein, DNA, RNA chains [i](#)

There are no non-standard protein/DNA/RNA residues in this entry.

5.5 Carbohydrates [i](#)

There are no carbohydrates in this entry.

5.6 Ligand geometry [i](#)

2 ligands are modelled in this entry.

In the following table, the Counts columns list the number of bonds (or angles) for which Mogul statistics could be retrieved, the number of bonds (or angles) that are observed in the model and the number of bonds (or angles) that are defined in the chemical component dictionary. The Link column lists molecule types, if any, to which the group is linked. The Z score for a bond length (or angle) is the number of standard deviations the observed value is removed from the expected value. A bond length (or angle) with $|Z| > 2$ is considered an outlier worth inspection. RMSZ is the root-mean-square of all Z scores of the bond lengths (or angles).

Mol	Type	Chain	Res	Link	Bond lengths			Bond angles		
					Counts	RMSZ	$\# Z > 2$	Counts	RMSZ	$\# Z > 2$
2	PPS	A	602	-	26,33,33	1.34	4 (15%)	31,52,52	1.38	5 (16%)
2	PPS	B	502	-	26,33,33	1.38	4 (15%)	31,52,52	1.34	4 (12%)

In the following table, the Chirals column lists the number of chiral outliers, the number of chiral centers analysed, the number of these observed in the model and the number defined in the chemical component dictionary. Similar counts are reported in the Torsion and Rings columns. '-' means no outliers of that kind were identified.

Mol	Type	Chain	Res	Link	Chirals	Torsions	Rings
2	PPS	A	602	-	-	0/11/37/37	0/3/3/3
2	PPS	B	502	-	-	0/11/37/37	0/3/3/3

All (8) bond length outliers are listed below:

Mol	Chain	Res	Type	Atoms	Z	Observed(Å)	Ideal(Å)
2	B	502	PPS	P2-O4P	-3.73	1.37	1.51
2	A	602	PPS	P2-O4P	-3.43	1.38	1.51
2	B	502	PPS	C8-N7	-2.80	1.29	1.34
2	B	502	PPS	P1-O1P	-2.21	1.46	1.54
2	A	602	PPS	C8-N7	-2.16	1.30	1.34
2	A	602	PPS	P1-O1P	-2.11	1.47	1.54

Continued on next page...

Continued from previous page...

Mol	Chain	Res	Type	Atoms	Z	Observed(Å)	Ideal(Å)
2	B	502	PPS	C2-N3	2.74	1.37	1.32
2	A	602	PPS	C2-N3	2.96	1.37	1.32

All (9) bond angle outliers are listed below:

Mol	Chain	Res	Type	Atoms	Z	Observed(°)	Ideal(°)
2	B	502	PPS	N3-C2-N1	-4.68	125.31	128.89
2	A	602	PPS	N3-C2-N1	-4.46	125.48	128.89
2	A	602	PPS	C2'-C1'-N9	-2.19	110.95	114.29
2	B	502	PPS	O5P-P2-O6P	2.01	112.11	104.94
2	A	602	PPS	O2'-C2'-C3'	2.10	117.21	111.16
2	B	502	PPS	O2'-C2'-C3'	2.20	117.52	111.16
2	B	502	PPS	C4-C5-N7	2.33	111.62	109.48
2	A	602	PPS	C4-C5-N7	2.42	111.71	109.48
2	A	602	PPS	O4'-C1'-N9	2.47	113.27	108.10

There are no chirality outliers.

There are no torsion outliers.

There are no ring outliers.

1 monomer is involved in 1 short contact:

Mol	Chain	Res	Type	Clashes	Symm-Clashes
2	A	602	PPS	1	0

5.7 Other polymers [i](#)

There are no such residues in this entry.

5.8 Polymer linkage issues [i](#)

There are no chain breaks in this entry.

6 Fit of model and data ⓘ

6.1 Protein, DNA and RNA chains ⓘ

EDS was not executed - this section will therefore be empty.

6.2 Non-standard residues in protein, DNA, RNA chains ⓘ

EDS was not executed - this section will therefore be empty.

6.3 Carbohydrates ⓘ

EDS was not executed - this section will therefore be empty.

6.4 Ligands ⓘ

EDS was not executed - this section will therefore be empty.

6.5 Other polymers ⓘ

EDS was not executed - this section will therefore be empty.