



# Full wwPDB X-ray Structure Validation Report ⓘ

Feb 1, 2016 – 05:19 PM GMT

PDB ID : 4HYV  
Title : Pyruvate kinase (PYK) from Trypanosoma brucei in the presence of Magnesium, PEP and F26BP  
Authors : Zhong, W.; Morgan, H.P.; McNae, I.W.; Michels, P.A.M.; Fothergill-Gilmore, L.A.; Walkinshaw, M.D.  
Deposited on : 2012-11-14  
Resolution : 2.30 Å(reported)

This is a Full wwPDB X-ray Structure Validation Report for a publicly released PDB entry.  
We welcome your comments at [validation@mail.wwpdb.org](mailto:validation@mail.wwpdb.org)  
A user guide is available at  
<http://wwpdb.org/validation/2016/XrayValidationReportHelp>  
with specific help available everywhere you see the ⓘ symbol.

---

The following versions of software and data (see [references ⓘ](#)) were used in the production of this report:

MolProbity : 4.02b-467  
Mogul : 1.7 (RC4), CSD as536be (2015)  
Xtriage (Phenix) : 1.9-1692  
EDS : rb-20026688  
Percentile statistics : 20151230.v01 (using entries in the PDB archive December 30th 2015)  
Refmac : 5.8.0135  
CCP4 : 6.5.0  
Ideal geometry (proteins) : Engh & Huber (2001)  
Ideal geometry (DNA, RNA) : Parkinson et al. (1996)  
Validation Pipeline (wwPDB-VP) : trunk26865

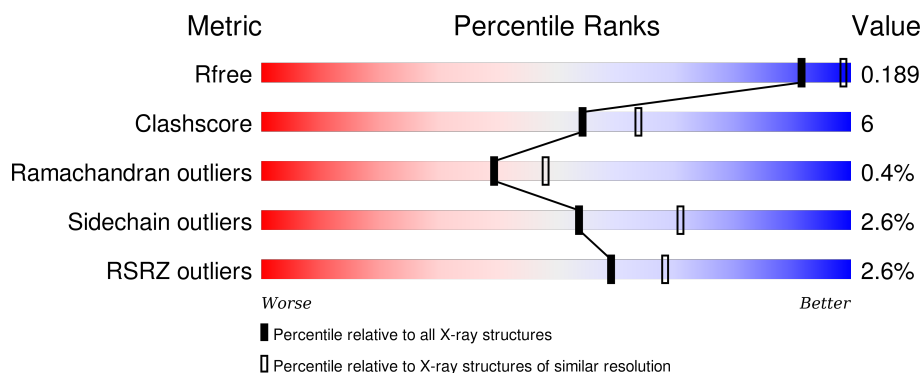
# 1 Overall quality at a glance

The following experimental techniques were used to determine the structure:

## *X-RAY DIFFRACTION*

The reported resolution of this entry is 2.30 Å.

Percentile scores (ranging between 0-100) for global validation metrics of the entry are shown in the following graphic. The table shows the number of entries on which the scores are based.



Metric	Whole archive (#Entries)	Similar resolution (#Entries, resolution range(Å))
$R_{free}$	91344	3852 (2.30-2.30)
Clashscore	102246	4452 (2.30-2.30)
Ramachandran outliers	100387	4410 (2.30-2.30)
Sidechain outliers	100360	4409 (2.30-2.30)
RSRZ outliers	91569	3857 (2.30-2.30)

The table below summarises the geometric issues observed across the polymeric chains and their fit to the electron density. The red, orange, yellow and green segments on the lower bar indicate the fraction of residues that contain outliers for  $\geq 3$ , 2, 1 and 0 types of geometric quality criteria. A grey segment represents the fraction of residues that are not modelled. The numeric value for each fraction is indicated below the corresponding segment, with a dot representing fractions  $\leq 5\%$ . The upper red bar (where present) indicates the fraction of residues that have poor fit to the electron density. The numeric value is given above the bar.

Mol	Chain	Length	Quality of chain
1	A	499	<div> <div>5%</div> <div>87%</div> <div>11%</div> <div>•</div> </div>
1	B	499	<div> <div>%</div> <div>86%</div> <div>13%</div> <div>•</div> </div>

The following table lists non-polymeric compounds, carbohydrate monomers and non-standard residues in protein, DNA, RNA chains that are outliers for geometric or electron-density-fit criteria:

Mol	Type	Chain	Res	Chirality	Geometry	Clashes	Electron density
6	GOL	A	1005	-	-	-	X

## 2 Entry composition

There are 8 unique types of molecules in this entry. The entry contains 8594 atoms, of which 0 are hydrogens and 0 are deuteriums.

In the tables below, the ZeroOcc column contains the number of atoms modelled with zero occupancy, the AltConf column contains the number of residues with at least one atom in alternate conformation and the Trace column contains the number of residues modelled with at most 2 atoms.

- Molecule 1 is a protein called Pyruvate kinase 1.

Mol	Chain	Residues	Atoms					ZeroOcc	AltConf	Trace
1	A	498	Total	C	N	O	S	0	8	0
			3833	2387	683	732	31			
1	B	498	Total	C	N	O	S	0	7	0
			3833	2387	683	732	31			

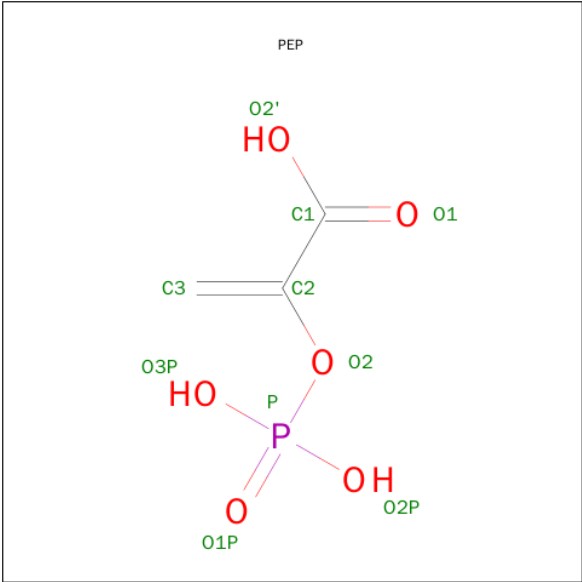
- Molecule 2 is MAGNESIUM ION (three-letter code: MG) (formula: Mg).

Mol	Chain	Residues	Atoms		ZeroOcc	AltConf
2	B	1	Total	Mg	0	0
			1	1		
2	A	1	Total	Mg	0	0
			1	1		

- Molecule 3 is POTASSIUM ION (three-letter code: K) (formula: K).

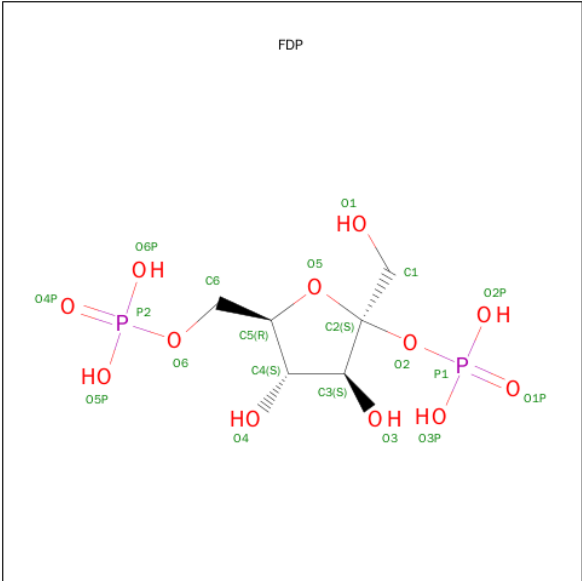
Mol	Chain	Residues	Atoms		ZeroOcc	AltConf
3	B	1	Total	K	0	0
			1	1		
3	A	1	Total	K	0	0
			1	1		

- Molecule 4 is PHOSPHOENOLPYRUVATE (three-letter code: PEP) (formula: C<sub>3</sub>H<sub>5</sub>O<sub>6</sub>P).



Mol	Chain	Residues	Atoms				ZeroOcc	AltConf
4	A	1	Total	C	O	P	0	0
			10	3	6	1		
4	B	1	Total	C	O	P	0	0
			10	3	6	1		

- Molecule 5 is SUGAR (FRUCTOSE-2,6-DIPHOSPHATE) (three-letter code: FDP) (formula: C<sub>6</sub>H<sub>14</sub>O<sub>12</sub>P<sub>2</sub>).



Mol	Chain	Residues	Atoms				ZeroOcc	AltConf
5	A	1	Total	C	O	P	0	0
			20	6	12	2		

Continued on next page...

*Continued from previous page...*

Mol	Chain	Residues	Atoms				ZeroOcc	AltConf
5	B	1	Total	C	O	P	0	0
			20	6	12	2		

- Molecule 6 is GLYCEROL (three-letter code: GOL) (formula:  $C_3H_8O_3$ ).



Mol	Chain	Residues	Atoms			ZeroOcc	AltConf
6	A	1	Total	C	O	0	0
			6	3	3		

- Molecule 7 is CHLORIDE ION (three-letter code: CL) (formula:  $Cl$ ).

Mol	Chain	Residues	Atoms		ZeroOcc	AltConf
7	B	1	Total	Cl	0	0
			1	1		

- Molecule 8 is water.

Mol	Chain	Residues	Atoms		ZeroOcc	AltConf
8	A	445	Total	O	0	0
			445	445		
8	B	412	Total	O	0	0
			412	412		



## 4 Data and refinement statistics

Property	Value	Source
Space group	I 2 2 2	Depositor
Cell constants a, b, c, $\alpha$ , $\beta$ , $\gamma$	103.41Å 108.93Å 263.34Å 90.00° 90.00° 90.00°	Depositor
Resolution (Å)	65.17 – 2.30 65.17 – 2.30	Depositor EDS
% Data completeness (in resolution range)	100.0 (65.17-2.30) 100.0 (65.17-2.30)	Depositor EDS
$R_{merge}$	(Not available)	Depositor
$R_{sym}$	(Not available)	Depositor
$\langle I/\sigma(I) \rangle$ <sup>1</sup>	2.94 (at 2.29Å)	Xtriage
Refinement program	REFMAC 5.6.0117	Depositor
R, $R_{free}$	0.146 , 0.188 0.146 , 0.189	Depositor DCC
$R_{free}$ test set	3366 reflections (5.35%)	DCC
Wilson B-factor (Å <sup>2</sup> )	31.9	Xtriage
Anisotropy	0.048	Xtriage
Bulk solvent $k_{sol}$ (e/Å <sup>3</sup> ), $B_{sol}$ (Å <sup>2</sup> )	0.33 , 46.6	EDS
Estimated twinning fraction	0.013 for -k,-h,-l	Xtriage
L-test for twinning <sup>2</sup>	$\langle  L  \rangle = 0.49$ , $\langle L^2 \rangle = 0.32$	Xtriage
Outliers	0 of 66318 reflections	Xtriage
$F_o, F_c$ correlation	0.97	EDS
Total number of atoms	8594	wwPDB-VP
Average B, all atoms (Å <sup>2</sup> )	38.0	wwPDB-VP

Xtriage's analysis on translational NCS is as follows: *The largest off-origin peak in the Patterson function is 3.06% of the height of the origin peak. No significant pseudotranslation is detected.*

<sup>1</sup>Intensities estimated from amplitudes.

<sup>2</sup>Theoretical values of  $\langle |L| \rangle$ ,  $\langle L^2 \rangle$  for acentric reflections are 0.5, 0.375 respectively for untwinned datasets, and 0.333, 0.2 for perfectly twinned datasets.



## 5 Model quality [i](#)

### 5.1 Standard geometry [i](#)

Bond lengths and bond angles in the following residue types are not validated in this section: GOL, MG, CL, K, PEP, FDP

The Z score for a bond length (or angle) is the number of standard deviations the observed value is removed from the expected value. A bond length (or angle) with  $|Z| > 5$  is considered an outlier worth inspection. RMSZ is the root-mean-square of all Z scores of the bond lengths (or angles).

Mol	Chain	Bond lengths		Bond angles	
		RMSZ	$\# Z  > 5$	RMSZ	$\# Z  > 5$
1	A	0.61	0/3913	0.54	0/5288
1	B	0.61	0/3910	0.53	0/5283
All	All	0.61	0/7823	0.54	0/10571

There are no bond length outliers.

There are no bond angle outliers.

There are no chirality outliers.

There are no planarity outliers.

### 5.2 Too-close contacts [i](#)

In the following table, the Non-H and H(model) columns list the number of non-hydrogen atoms and hydrogen atoms in the chain respectively. The H(added) column lists the number of hydrogen atoms added and optimized by MolProbity. The Clashes column lists the number of clashes within the asymmetric unit, whereas Symm-Clashes lists symmetry related clashes.

Mol	Chain	Non-H	H(model)	H(added)	Clashes	Symm-Clashes
1	A	3833	0	3907	53	0
1	B	3833	0	3904	53	0
2	A	1	0	0	0	0
2	B	1	0	0	0	0
3	A	1	0	0	0	0
3	B	1	0	0	0	0
4	A	10	0	2	0	0
4	B	10	0	2	0	0
5	A	20	0	10	0	0
5	B	20	0	10	0	0
6	A	6	0	8	1	0

*Continued on next page...*

*Continued from previous page...*

Mol	Chain	Non-H	H(model)	H(added)	Clashes	Symm-Clashes
7	B	1	0	0	0	0
8	A	445	0	0	6	0
8	B	412	0	0	13	0
All	All	8594	0	7843	100	0

The all-atom clashscore is defined as the number of clashes found per 1000 atoms (including hydrogen atoms). The all-atom clashscore for this structure is 6.

All (100) close contacts within the same asymmetric unit are listed below, sorted by their clash magnitude.

Atom-1	Atom-2	Interatomic distance (Å)	Clash overlap (Å)
1:A:173:THR:HG23	1:A:176:ARG:HD2	1.27	1.12
1:B:193:LYS:HE2	1:B:197:ASP:OD1	1.62	0.99
1:B:497:TYR:CZ	8:B:1449:HOH:O	2.23	0.89
1:A:243:HIS:CE1	1:B:13:PHE:HE2	1.98	0.81
1:B:425:ARG:NH1	8:B:1211:HOH:O	2.15	0.80
1:A:243:HIS:CE1	1:B:13:PHE:CE2	2.70	0.79
1:A:173:THR:HG23	1:A:176:ARG:CD	2.12	0.76
1:A:96:LYS:O	1:A:97:ASP:HB2	1.87	0.75
1:A:276[B]:CYS:SG	1:B:314:VAL:HG12	2.26	0.75
1:A:169:HIS:ND1	8:A:1478:HOH:O	2.21	0.72
1:A:137:ARG:HB2	1:A:138:PRO:HD2	1.73	0.70
1:B:189:ALA:HB2	1:B:219:GLN:HG2	1.71	0.70
1:A:149:MET:HE2	1:A:170:HIS:HB3	1.74	0.69
1:A:215:ARG:HD2	1:A:244:GLN:OE1	1.94	0.68
1:A:359:HIS:HD2	1:A:361:THR:H	1.42	0.67
1:B:466:LYS:NZ	1:B:499:PRO:O	2.29	0.66
1:A:173:THR:CG2	1:A:176:ARG:HD2	2.16	0.65
1:B:476:VAL:HG22	8:B:1449:HOH:O	1.96	0.65
1:B:387:ALA:O	1:B:391[A]:GLU:HG2	1.98	0.64
1:A:137:ARG:HB2	1:A:138:PRO:CD	2.28	0.64
1:A:387:ALA:O	1:A:391[A]:GLU:HG2	1.98	0.64
1:A:157:GLU:OE2	1:A:163:LYS:HE3	2.00	0.62
1:A:54:SER:OG	1:A:89:GLU:OE1	2.18	0.60
1:A:174:ASP:HB2	8:A:1440:HOH:O	2.02	0.60
1:B:149:MET:CE	1:B:151:LEU:HD21	2.33	0.59
1:A:241:GLU:HB3	1:A:262:ALA:HB3	1.86	0.58
1:A:100:VAL:HG11	1:A:122:LYS:HA	1.84	0.58
1:A:456:LYS:NZ	8:A:1412:HOH:O	2.37	0.58
1:A:173:THR:OG1	1:A:174:ASP:N	2.36	0.57
1:B:453:ASP:C	1:B:454:LYS:HG2	2.24	0.57

*Continued on next page...*

*Continued from previous page...*

Atom-1	Atom-2	Interatomic distance (Å)	Clash overlap (Å)
1:B:213:PHE:CD2	8:B:1490:HOH:O	2.53	0.57
1:B:450:GLU:HB2	8:B:1510:HOH:O	2.05	0.57
1:B:359:HIS:HD2	1:B:361:THR:H	1.52	0.57
1:A:101:SER:OG	1:A:171:ARG:HG3	2.05	0.56
1:B:176:ARG:HA	1:B:176:ARG:NE	2.21	0.56
1:B:497:TYR:CE2	8:B:1449:HOH:O	2.49	0.55
1:B:213:PHE:HD2	8:B:1490:HOH:O	1.88	0.55
1:B:176:ARG:HA	1:B:176:ARG:HE	1.71	0.54
1:B:149:MET:HE2	1:B:151:LEU:HD21	1.90	0.54
1:B:109:CYS:O	1:B:124:LYS:HA	2.06	0.54
1:B:487:LYS:HD2	8:B:1399:HOH:O	2.08	0.54
1:A:308[A]:ARG:NH1	1:B:146:ASP:O	2.29	0.53
1:A:376[B]:CYS:HB2	1:A:377:PRO:HD2	1.91	0.52
1:A:243:HIS:HE1	1:B:13:PHE:CE2	2.25	0.52
1:B:444:ASP:OD1	8:B:1479:HOH:O	2.18	0.52
1:A:174:ASP:CB	8:A:1440:HOH:O	2.56	0.52
1:A:308[B]:ARG:HG2	1:A:346:TYR:OH	2.10	0.52
1:B:136:VAL:HG22	1:B:153:VAL:HG21	1.94	0.50
1:B:42:MET:CE	1:B:79:ILE:HG13	2.41	0.50
1:B:91[A]:ARG:NH2	8:B:1358:HOH:O	2.15	0.50
1:B:476:VAL:CG2	8:B:1449:HOH:O	2.56	0.50
1:B:190:VAL:HG23	1:B:194:ASP:HB2	1.94	0.49
1:A:106:ASP:OD2	1:A:122:LYS:HE3	2.12	0.49
1:A:102:PHE:HB3	1:A:166:VAL:HG11	1.95	0.49
1:A:100:VAL:HG11	1:A:122:LYS:CA	2.42	0.48
1:B:41:LEU:HD22	1:B:344:VAL:HG21	1.93	0.48
1:A:163:LYS:HE3	1:A:163:LYS:HB2	1.72	0.48
1:B:476:VAL:HG23	8:B:1163:HOH:O	2.14	0.48
1:B:479:VAL:HG21	1:B:496:ILE:HD12	1.95	0.48
1:A:157:GLU:HB2	1:A:161:THR:HB	1.96	0.48
1:B:172:LEU:HD22	1:B:176:ARG:HG3	1.96	0.47
1:B:241:GLU:HG2	1:B:262:ALA:HB3	1.95	0.47
1:A:192:GLU:HA	1:A:192:GLU:OE2	2.14	0.47
1:A:314:VAL:HG12	1:B:276[B]:CYS:SG	2.55	0.47
1:A:99:GLU:HG3	1:A:171:ARG:NE	2.30	0.47
1:B:300:LEU:HD23	1:B:313:GLU:HB3	1.97	0.46
1:A:473:THR:HB	8:A:1536:HOH:O	2.15	0.46
1:A:149:MET:HA	1:A:168:ASN:HD21	1.80	0.46
1:B:149:MET:HE3	1:B:151:LEU:HD21	1.98	0.45
1:B:136:VAL:CG2	1:B:153:VAL:HG21	2.46	0.45
1:A:109:CYS:O	1:A:124:LYS:HA	2.17	0.45

*Continued on next page...*

*Continued from previous page...*

Atom-1	Atom-2	Interatomic distance (Å)	Clash overlap (Å)
1:A:192:GLU:OE1	1:A:195:ARG:NH2	2.49	0.45
1:A:100:VAL:HG12	1:A:101:SER:N	2.32	0.45
1:A:365:ASN:HD21	6:A:1005:GOL:H31	1.80	0.45
1:A:373:ILE:HD11	8:A:1513:HOH:O	2.16	0.44
1:B:176:ARG:CA	1:B:176:ARG:HE	2.29	0.44
1:A:145:ASP:CG	1:A:176:ARG:HD3	2.38	0.44
1:A:467:LYS:HB3	1:A:467:LYS:HE2	1.69	0.44
1:B:338:LYS:HB3	1:B:338:LYS:HE2	1.82	0.43
1:B:468:GLU:O	1:B:469:LYS:HB2	2.17	0.43
1:A:136:VAL:HG22	1:A:153:VAL:HG21	2.01	0.43
1:A:106:ASP:O	1:A:166:VAL:HG23	2.19	0.42
1:B:143:TYR:HB3	1:B:147:GLY:HA2	2.00	0.42
1:B:105:GLY:HA2	1:B:165:HIS:NE2	2.33	0.42
1:B:484:HIS:CE1	8:B:1411:HOH:O	2.72	0.42
1:B:478:VAL:HG22	1:B:495:LEU:HD22	2.02	0.42
1:A:466:LYS:HE3	1:A:466:LYS:HB2	1.78	0.42
1:A:116:TYR:CE1	1:A:124:LYS:HD3	2.55	0.42
1:A:453:ASP:C	1:A:454:LYS:HG2	2.40	0.42
1:A:86:LYS:HD3	1:A:193:LYS:HD3	2.02	0.41
1:B:339:TYR:N	1:B:340:PRO:CD	2.82	0.41
1:B:27:THR:OG1	1:B:50:ARG:HD3	2.20	0.41
1:B:11:SER:HB3	1:B:14:GLU:HG2	2.03	0.41
1:A:96:LYS:HG2	1:A:120:GLY:O	2.21	0.41
1:B:453:ASP:O	1:B:454:LYS:HG2	2.21	0.41
1:B:411:SER:O	1:B:414:ARG:HD3	2.21	0.41
1:A:360:ASP:HB3	1:A:361:THR:HG23	2.03	0.40
1:B:436:ARG:O	1:B:437:SER:HB2	2.21	0.40
1:B:498:LEU:HA	1:B:498:LEU:HD23	1.78	0.40
1:A:411:SER:O	1:A:414:ARG:HD3	2.22	0.40

There are no symmetry-related clashes.

## 5.3 Torsion angles [i](#)

### 5.3.1 Protein backbone [i](#)

In the following table, the Percentiles column shows the percent Ramachandran outliers of the chain as a percentile score with respect to all X-ray entries followed by that with respect to entries of similar resolution.

The Analysed column shows the number of residues for which the backbone conformation was analysed, and the total number of residues.

Mol	Chain	Analysed	Favoured	Allowed	Outliers	Percentiles	
1	A	504/499 (101%)	486 (96%)	15 (3%)	3 (1%)	30	36
1	B	503/499 (101%)	491 (98%)	11 (2%)	1 (0%)	52	64
All	All	1007/998 (101%)	977 (97%)	26 (3%)	4 (0%)	39	48

All (4) Ramachandran outliers are listed below:

Mol	Chain	Res	Type
1	A	297	THR
1	B	297	THR
1	A	106	ASP
1	A	145	ASP

### 5.3.2 Protein sidechains ⓘ

In the following table, the Percentiles column shows the percent sidechain outliers of the chain as a percentile score with respect to all X-ray entries followed by that with respect to entries of similar resolution.

The Analysed column shows the number of residues for which the sidechain conformation was analysed, and the total number of residues.

Mol	Chain	Analysed	Rotameric	Outliers	Percentiles	
1	A	430/423 (102%)	419 (97%)	11 (3%)	54	71
1	B	429/423 (101%)	418 (97%)	11 (3%)	54	71
All	All	859/846 (102%)	837 (97%)	22 (3%)	54	71

All (22) residues with a non-rotameric sidechain are listed below:

Mol	Chain	Res	Type
1	A	94	LEU
1	A	97	ASP
1	A	99	GLU
1	A	136	VAL
1	A	137	ARG
1	A	150	THR
1	A	171	ARG
1	A	173	THR
1	A	336	LYS
1	A	467	LYS
1	A	472	SER
1	B	136	VAL

*Continued on next page...*

*Continued from previous page...*

Mol	Chain	Res	Type
1	B	150	THR
1	B	180	LEU
1	B	190	VAL
1	B	193	LYS
1	B	213	PHE
1	B	218	GLU
1	B	405	ARG
1	B	450	GLU
1	B	466	LYS
1	B	467	LYS

Some sidechains can be flipped to improve hydrogen bonding and reduce clashes. All (8) such sidechains are listed below:

Mol	Chain	Res	Type
1	A	131	GLN
1	A	170	HIS
1	A	243	HIS
1	A	319	ASN
1	A	359	HIS
1	A	365	ASN
1	B	319	ASN
1	B	359	HIS

### 5.3.3 RNA [i](#)

There are no RNA molecules in this entry.

## 5.4 Non-standard residues in protein, DNA, RNA chains [i](#)

There are no non-standard protein/DNA/RNA residues in this entry.

## 5.5 Carbohydrates [i](#)

There are no carbohydrates in this entry.

## 5.6 Ligand geometry [i](#)

Of 10 ligands modelled in this entry, 5 are monoatomic - leaving 5 for Mogul analysis.

In the following table, the Counts columns list the number of bonds (or angles) for which Mogul statistics could be retrieved, the number of bonds (or angles) that are observed in the model and the number of bonds (or angles) that are defined in the chemical component dictionary. The Link column lists molecule types, if any, to which the group is linked. The Z score for a bond length (or angle) is the number of standard deviations the observed value is removed from the expected value. A bond length (or angle) with  $|Z| > 2$  is considered an outlier worth inspection. RMSZ is the root-mean-square of all Z scores of the bond lengths (or angles).

Mol	Type	Chain	Res	Link	Bond lengths			Bond angles		
					Counts	RMSZ	# $ Z  > 2$	Counts	RMSZ	# $ Z  > 2$
4	PEP	A	1003	3,2	5,9,9	5.38	1 (20%)	8,13,13	2.71	3 (37%)
5	FDP	A	1004	-	20,20,20	1.19	2 (10%)	27,32,32	1.18	2 (7%)
6	GOL	A	1005	-	5,5,5	0.20	0	5,5,5	0.41	0
4	PEP	B	1003	3,2	5,9,9	4.90	1 (20%)	8,13,13	2.66	3 (37%)
5	FDP	B	1004	-	20,20,20	1.20	1 (5%)	27,32,32	1.34	3 (11%)

In the following table, the Chirals column lists the number of chiral outliers, the number of chiral centers analysed, the number of these observed in the model and the number defined in the chemical component dictionary. Similar counts are reported in the Torsion and Rings columns. '-' means no outliers of that kind were identified.

Mol	Type	Chain	Res	Link	Chirals	Torsions	Rings
4	PEP	A	1003	3,2	-	0/5/9/9	0/0/0/0
5	FDP	A	1004	-	-	0/12/34/34	0/1/1/1
6	GOL	A	1005	-	-	0/4/4/4	0/0/0/0
4	PEP	B	1003	3,2	-	0/5/9/9	0/0/0/0
5	FDP	B	1004	-	-	0/12/34/34	0/1/1/1

All (5) bond length outliers are listed below:

Mol	Chain	Res	Type	Atoms	Z	Observed(Å)	Ideal(Å)
5	A	1004	FDP	P1-O2	2.30	1.67	1.60
5	A	1004	FDP	O5-C5	2.81	1.50	1.43
5	B	1004	FDP	O5-C5	4.24	1.53	1.43
4	B	1003	PEP	C3-C2	10.58	1.53	1.33
4	A	1003	PEP	C3-C2	11.70	1.55	1.33

All (11) bond angle outliers are listed below:

Mol	Chain	Res	Type	Atoms	Z	Observed(°)	Ideal(°)
4	B	1003	PEP	O2-C2-C3	-3.01	118.65	124.73
4	B	1003	PEP	O3P-P-O1P	-2.88	101.30	110.58
4	A	1003	PEP	O2-C2-C3	-2.74	119.19	124.73

*Continued on next page...*

*Continued from previous page...*

Mol	Chain	Res	Type	Atoms	Z	Observed(°)	Ideal(°)
4	A	1003	PEP	O3P-P-O1P	-2.69	101.91	110.58
5	B	1004	FDP	C6-C5-C4	-2.44	105.52	115.21
5	B	1004	FDP	O6-P2-O4P	2.60	113.75	107.14
5	A	1004	FDP	O6-P2-O4P	2.71	114.05	107.14
5	A	1004	FDP	O2-P1-O1P	3.67	116.28	107.11
5	B	1004	FDP	O2-P1-O1P	3.69	116.33	107.11
4	B	1003	PEP	O2P-P-O1P	6.15	130.38	110.58
4	A	1003	PEP	O2P-P-O1P	6.52	131.55	110.58

There are no chirality outliers.

There are no torsion outliers.

There are no ring outliers.

1 monomer is involved in 1 short contact:

Mol	Chain	Res	Type	Clashes	Symm-Clashes
6	A	1005	GOL	1	0

## 5.7 Other polymers [i](#)

There are no such residues in this entry.

## 5.8 Polymer linkage issues [i](#)

There are no chain breaks in this entry.



## 6 Fit of model and data ⓘ

### 6.1 Protein, DNA and RNA chains ⓘ

In the following table, the column labelled ‘#RSRZ> 2’ contains the number (and percentage) of RSRZ outliers, followed by percent RSRZ outliers for the chain as percentile scores relative to all X-ray entries and entries of similar resolution. The OWAB column contains the minimum, median, 95<sup>th</sup> percentile and maximum values of the occupancy-weighted average B-factor per residue. The column labelled ‘Q< 0.9’ lists the number of (and percentage) of residues with an average occupancy less than 0.9.

Mol	Chain	Analysed	<RSRZ>	#RSRZ>2	OWAB(Å <sup>2</sup> )	Q<0.9
1	A	498/499 (99%)	-0.10	23 (4%) 36 45	15, 31, 92, 126	0
1	B	498/499 (99%)	-0.39	3 (0%) 90 93	17, 33, 56, 91	0
All	All	996/998 (99%)	-0.24	26 (2%) 59 68	15, 32, 75, 126	0

All (26) RSRZ outliers are listed below:

Mol	Chain	Res	Type	RSRZ
1	A	172	LEU	5.5
1	A	119	VAL	4.2
1	A	100	VAL	3.9
1	A	96	LYS	3.7
1	A	165	HIS	3.5
1	A	95	PHE	3.2
1	A	97	ASP	3.0
1	A	107	ILE	2.9
1	A	171	ARG	2.7
1	A	94	LEU	2.6
1	A	184	GLU	2.5
1	A	104	PRO	2.5
1	A	170	HIS	2.5
1	A	164	CYS	2.4
1	A	93	GLY	2.4
1	B	169	HIS	2.4
1	A	175	ARG	2.4
1	A	102	PHE	2.4
1	A	174	ASP	2.3
1	A	125	PHE	2.3
1	A	138	PRO	2.2
1	A	186	ASP	2.2
1	B	137	ARG	2.1
1	A	139	GLY	2.1

*Continued on next page...*

*Continued from previous page...*

Mol	Chain	Res	Type	RSRZ
1	B	103	ALA	2.1
1	A	106	ASP	2.1

## 6.2 Non-standard residues in protein, DNA, RNA chains [i](#)

There are no non-standard protein/DNA/RNA residues in this entry.

## 6.3 Carbohydrates [i](#)

There are no carbohydrates in this entry.

## 6.4 Ligands [i](#)

In the following table, the Atoms column lists the number of modelled atoms in the group and the number defined in the chemical component dictionary. LLDF column lists the quality of electron density of the group with respect to its neighbouring residues in protein, DNA or RNA chains. The B-factors column lists the minimum, median, 95<sup>th</sup> percentile and maximum values of B factors of atoms in the group. The column labelled 'Q< 0.9' lists the number of atoms with occupancy less than 0.9.

Mol	Type	Chain	Res	Atoms	RSCC	RSR	LLDF	B-factors(Å <sup>2</sup> )	Q<0.9
6	GOL	A	1005	6/6	0.91	0.20	5.18	46,55,61,73	0
4	PEP	A	1003	10/10	0.98	0.13	0.74	24,31,38,40	0
5	FDP	A	1004	20/20	0.99	0.10	-0.41	19,22,27,27	0
4	PEP	B	1003	10/10	0.98	0.12	-0.44	27,38,50,59	0
3	K	B	1002	1/1	0.99	0.11	-0.84	36,36,36,36	0
5	FDP	B	1004	20/20	0.99	0.08	-0.88	22,27,31,32	0
3	K	A	1002	1/1	0.99	0.06	-1.88	33,33,33,33	0
2	MG	B	1001	1/1	0.98	0.06	-	40,40,40,40	0
2	MG	A	1001	1/1	0.97	0.05	-	23,23,23,23	0
7	CL	B	1005	1/1	0.87	0.07	-	82,82,82,82	1

## 6.5 Other polymers [i](#)

There are no such residues in this entry.