



Full wwPDB X-ray Structure Validation Report ⓘ

Jan 31, 2016 – 07:56 PM GMT

PDB ID : 1HZY
Title : HIGH RESOLUTION STRUCTURE OF THE ZINC-CONTAINING PHOSPHOTRIESTERASE FROM PSEUDOMONAS DIMINUTA
Authors : Holden, H.M.; Benning, M.M.; Raushel, F.M.; Shim, H.
Deposited on : 2001-01-26
Resolution : 1.30 Å(reported)

This is a Full wwPDB X-ray Structure Validation Report for a publicly released PDB entry.
We welcome your comments at validation@mail.wwpdb.org
A user guide is available at
<http://wwpdb.org/validation/2016/XrayValidationReportHelp>
with specific help available everywhere you see the ⓘ symbol.

The following versions of software and data (see [references ⓘ](#)) were used in the production of this report:

MolProbity : 4.02b-467
Mogul : 1.7 (RC4), CSD as536be (2015)
Xtriage (Phenix) : **NOT EXECUTED**
EDS : **NOT EXECUTED**
Percentile statistics : 20151230.v01 (using entries in the PDB archive December 30th 2015)
Ideal geometry (proteins) : Engh & Huber (2001)
Ideal geometry (DNA, RNA) : Parkinson et al. (1996)
Validation Pipeline (wwPDB-VP) : trunk26865

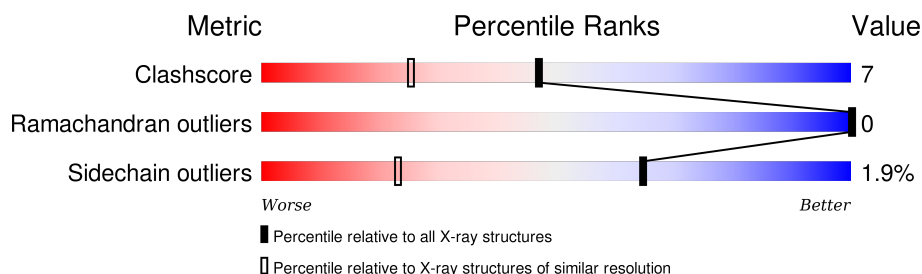
1 Overall quality at a glance

The following experimental techniques were used to determine the structure:

X-RAY DIFFRACTION

The reported resolution of this entry is 1.30 Å.

Percentile scores (ranging between 0-100) for global validation metrics of the entry are shown in the following graphic. The table shows the number of entries on which the scores are based.



Metric	Whole archive (#Entries)	Similar resolution (#Entries, resolution range(Å))
Clashscore	102246	1031 (1.32-1.28)
Ramachandran outliers	100387	1504 (1.34-1.26)
Sidechain outliers	100360	1503 (1.34-1.26)

The table below summarises the geometric issues observed across the polymeric chains and their fit to the electron density. The red, orange, yellow and green segments on the lower bar indicate the fraction of residues that contain outliers for ≥ 3 , 2, 1 and 0 types of geometric quality criteria. A grey segment represents the fraction of residues that are not modelled. The numeric value for each fraction is indicated below the corresponding segment, with a dot representing fractions $\leq 5\%$. The upper red bar (where present) indicates the fraction of residues that have poor fit to the electron density. The numeric value is given above the bar.

Note EDS was not executed.

Mol	Chain	Length	Quality of chain
1	A	332	
1	B	332	

The following table lists non-polymeric compounds, carbohydrate monomers and non-standard residues in protein, DNA, RNA chains that are outliers for geometric or electron-density-fit criteria:

Mol	Type	Chain	Res	Chirality	Geometry	Clashes	Electron density
4	EDO	B	424	-	-	X	-

2 Entry composition

There are 7 unique types of molecules in this entry. The entry contains 5974 atoms, of which 0 are hydrogens and 0 are deuteriums.

In the tables below, the ZeroOcc column contains the number of atoms modelled with zero occupancy, the AltConf column contains the number of residues with at least one atom in alternate conformation and the Trace column contains the number of residues modelled with at most 2 atoms.

- Molecule 1 is a protein called PHOSPHOTRIESTERASE.

Mol	Chain	Residues	Atoms					ZeroOcc	AltConf	Trace
1	A	331	Total	C	N	O	S	0	9	0
			2554	1613	453	481	7			
1	B	331	Total	C	N	O	S	0	8	0
			2546	1609	455	475	7			

- Molecule 2 is ZINC ION (three-letter code: ZN) (formula: Zn).

Mol	Chain	Residues	Atoms		ZeroOcc	AltConf
2	B	2	Total	Zn	0	0
			2	2		
2	A	2	Total	Zn	0	0
			2	2		

- Molecule 3 is SODIUM ION (three-letter code: NA) (formula: Na).

Mol	Chain	Residues	Atoms		ZeroOcc	AltConf
3	B	1	Total	Na	0	0
			1	1		
3	A	1	Total	Na	0	0
			1	1		

- Molecule 4 is 1,2-ETHANEDIOL (three-letter code: EDO) (formula: C₂H₆O₂).



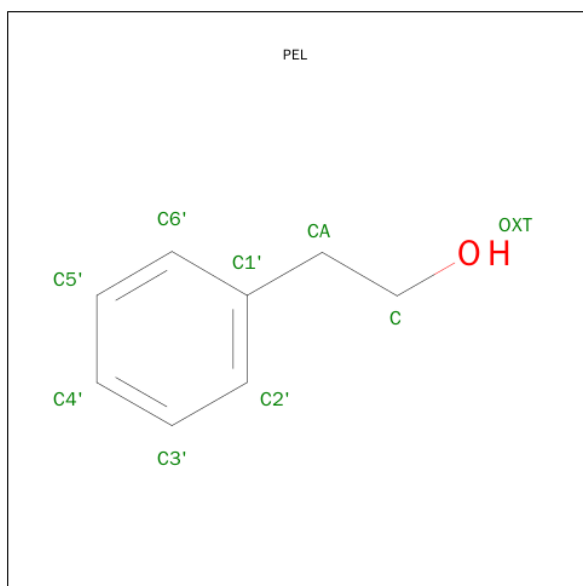
Mol	Chain	Residues	Atoms			ZeroOcc	AltConf
4	B	1	Total	C	O	0	0
			4	2	2		
4	A	1	Total	C	O	0	0
			4	2	2		
4	B	1	Total	C	O	0	0
			4	2	2		
4	A	1	Total	C	O	0	0
			4	2	2		
4	A	1	Total	C	O	0	0
			4	2	2		
4	B	1	Total	C	O	0	0
			4	2	2		
4	B	1	Total	C	O	0	0
			4	2	2		
4	B	1	Total	C	O	0	0
			4	2	2		
4	A	1	Total	C	O	0	0
			4	2	2		
4	A	1	Total	C	O	0	0
			4	2	2		
4	A	1	Total	C	O	0	0
			4	2	2		
4	A	1	Total	C	O	0	0
			4	2	2		

Continued on next page...

Continued from previous page...

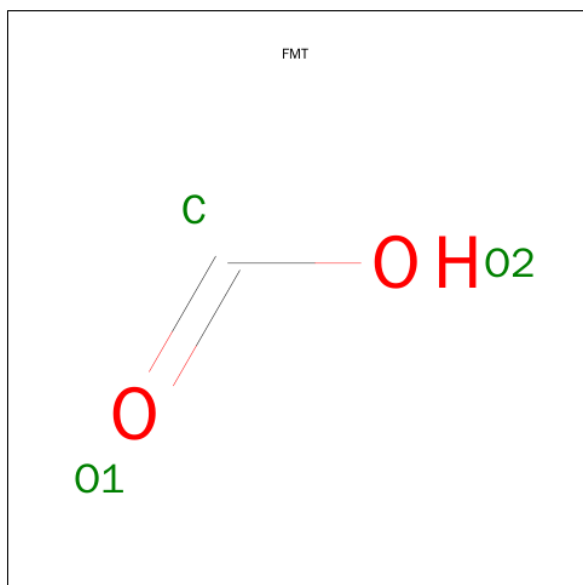
Mol	Chain	Residues	Atoms			ZeroOcc	AltConf
4	B	1	Total	C	O	0	0
			4	2	2		
4	B	1	Total	C	O	0	0
			4	2	2		
4	B	1	Total	C	O	0	0
			4	2	2		
4	B	1	Total	C	O	0	0
			4	2	2		
4	A	1	Total	C	O	0	0
			4	2	2		
4	A	1	Total	C	O	0	0
			4	2	2		

- Molecule 5 is 2-PHENYL-ETHANOL (three-letter code: PEL) (formula: C₈H₁₀O).



Mol	Chain	Residues	Atoms			ZeroOcc	AltConf
5	B	1	Total	C	O	0	0
			9	8	1		
5	A	1	Total	C	O	0	0
			9	8	1		

- Molecule 6 is FORMIC ACID (three-letter code: FMT) (formula: CH₂O₂).



Mol	Chain	Residues	Atoms			ZeroOcc	AltConf
6	A	1	Total	C	O	0	0
			3	1	2		
6	B	1	Total	C	O	0	0
			3	1	2		

- Molecule 7 is water.

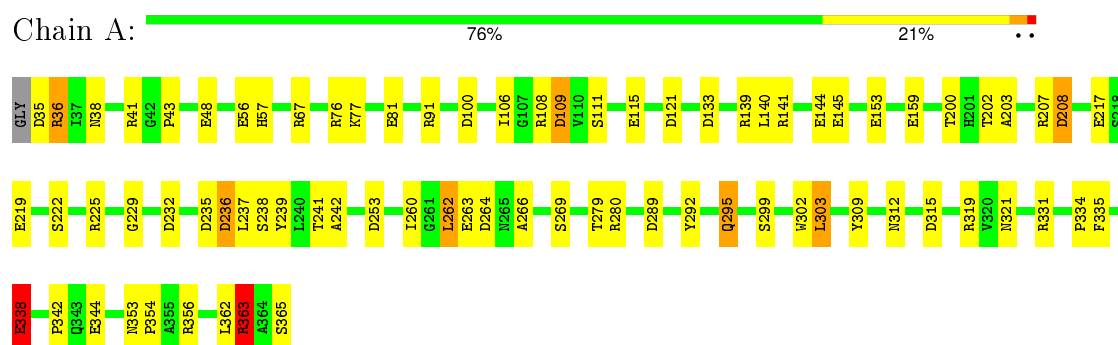
Mol	Chain	Residues	Atoms		ZeroOcc	AltConf
7	A	389	Total	O	0	0
			389	389		
7	B	375	Total	O	0	0
			375	375		

3 Residue-property plots

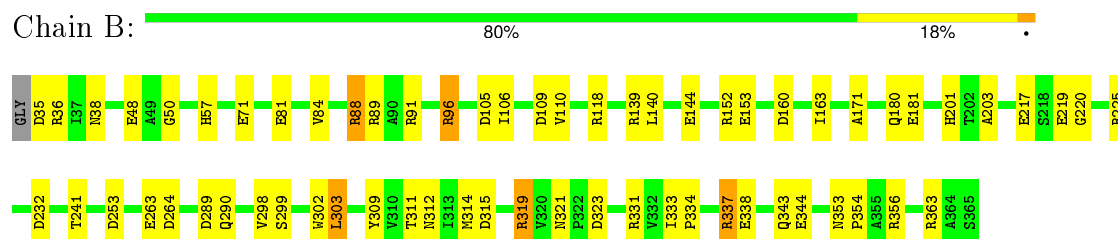
These plots are drawn for all protein, RNA and DNA chains in the entry. The first graphic for a chain summarises the proportions of errors displayed in the second graphic. The second graphic shows the sequence view annotated by issues in geometry and electron density. Residues are color-coded according to the number of geometric quality criteria for which they contain at least one outlier: green = 0, yellow = 1, orange = 2 and red = 3 or more. A red dot above a residue indicates a poor fit to the electron density ($RSRZ > 2$). Stretches of 2 or more consecutive residues without any outlier are shown as a green connector. Residues present in the sample, but not in the model, are shown in grey.

Note EDS was not executed.

• Molecule 1: PHOSPHOTRIESTERASE



• Molecule 1: PHOSPHOTRIESTERASE



4 Data and refinement statistics

Xtriage (Phenix) and EDS were not executed - this section will therefore be incomplete.

Property	Value	Source
Space group	C 1 2 1	Depositor
Cell constants a, b, c, α , β , γ	128.40 Å 90.03 Å 68.40 Å 90.00° 91.70° 90.00°	Depositor
Resolution (Å)	30.00 – 1.30	Depositor
% Data completeness (in resolution range)	(Not available) (30.00-1.30)	Depositor
R_{merge}	0.10	Depositor
R_{sym}	(Not available)	Depositor
Refinement program	TNT V. 5-E	Depositor
R, R_{free}	0.196 , 0.228	Depositor
Estimated twinning fraction	No twinning to report.	Xtriage
Total number of atoms	5974	wwPDB-VP
Average B, all atoms (Å ²)	18.0	wwPDB-VP

5 Model quality

5.1 Standard geometry

Bond lengths and bond angles in the following residue types are not validated in this section: PEL, NA, ZN, FMT, EDO

The Z score for a bond length (or angle) is the number of standard deviations the observed value is removed from the expected value. A bond length (or angle) with $|Z| > 5$ is considered an outlier worth inspection. RMSZ is the root-mean-square of all Z scores of the bond lengths (or angles).

Mol	Chain	Bond lengths		Bond angles	
		RMSZ	$\# Z > 5$	RMSZ	$\# Z > 5$
1	A	2.28	15/2649 (0.6%)	1.36	43/3599 (1.2%)
1	B	0.90	10/2636 (0.4%)	1.24	28/3580 (0.8%)
All	All	1.73	25/5285 (0.5%)	1.30	71/7179 (1.0%)

All (25) bond length outliers are listed below:

Mol	Chain	Res	Type	Atoms	Z	Observed(Å)	Ideal(Å)
1	A	365	SER	C-OXT	107.56	3.27	1.23
1	A	219	GLU	CD-OE2	7.47	1.33	1.25
1	B	153	GLU	CD-OE2	7.07	1.33	1.25
1	A	153	GLU	CD-OE2	6.88	1.33	1.25
1	A	338	GLU	CD-OE2	6.46	1.32	1.25
1	B	344	GLU	CD-OE2	6.21	1.32	1.25
1	B	338	GLU	CD-OE2	6.02	1.32	1.25
1	A	344	GLU	CD-OE2	5.98	1.32	1.25
1	A	159[A]	GLU	CD-OE2	5.87	1.32	1.25
1	A	159[B]	GLU	CD-OE2	5.87	1.32	1.25
1	A	263	GLU	CD-OE2	5.86	1.32	1.25
1	A	115	GLU	CD-OE2	5.77	1.32	1.25
1	B	181	GLU	CD-OE2	5.71	1.31	1.25
1	B	144	GLU	CD-OE2	5.65	1.31	1.25
1	B	48	GLU	CD-OE2	5.62	1.31	1.25
1	A	48	GLU	CD-OE2	5.58	1.31	1.25
1	B	71	GLU	CD-OE2	5.58	1.31	1.25
1	B	219	GLU	CD-OE2	5.50	1.31	1.25
1	A	81	GLU	CD-OE2	5.48	1.31	1.25
1	A	56	GLU	CD-OE2	5.32	1.31	1.25
1	B	81	GLU	CD-OE2	5.22	1.31	1.25
1	A	217	GLU	CD-OE2	5.11	1.31	1.25
1	B	217	GLU	CD-OE2	5.10	1.31	1.25
1	A	145	GLU	CD-OE2	5.08	1.31	1.25

Continued on next page...

Continued from previous page...

Mol	Chain	Res	Type	Atoms	Z	Observed(Å)	Ideal(Å)
1	A	144	GLU	CD-OE2	5.02	1.31	1.25

All (71) bond angle outliers are listed below:

Mol	Chain	Res	Type	Atoms	Z	Observed(°)	Ideal(°)
1	A	139	ARG	NE-CZ-NH1	9.63	125.11	120.30
1	A	236	ASP	CB-CG-OD1	9.56	126.91	118.30
1	B	139	ARG	NE-CZ-NH1	8.81	124.70	120.30
1	B	331	ARG	NE-CZ-NH1	8.65	124.63	120.30
1	A	253	ASP	CB-CG-OD1	8.64	126.08	118.30
1	A	36	ARG	NE-CZ-NH2	-8.53	116.04	120.30
1	A	315	ASP	CB-CG-OD2	-8.18	110.94	118.30
1	A	121	ASP	CB-CG-OD2	-7.66	111.41	118.30
1	A	331	ARG	NE-CZ-NH1	7.30	123.95	120.30
1	A	109	ASP	CB-CG-OD2	-7.16	111.86	118.30
1	A	35	ASP	CB-CG-OD2	-7.14	111.87	118.30
1	A	76	ARG	NE-CZ-NH2	-7.12	116.74	120.30
1	B	109	ASP	CB-CG-OD2	-7.11	111.90	118.30
1	B	315	ASP	CB-CG-OD2	-7.05	111.95	118.30
1	B	356	ARG	NE-CZ-NH2	-7.03	116.78	120.30
1	B	35	ASP	CB-CG-OD2	-7.03	111.97	118.30
1	A	91	ARG	NE-CZ-NH2	-7.00	116.80	120.30
1	B	152	ARG	NE-CZ-NH2	-6.98	116.81	120.30
1	A	236	ASP	N-CA-CB	6.97	123.14	110.60
1	A	109	ASP	CB-CG-OD1	6.95	124.55	118.30
1	A	133	ASP	CB-CG-OD1	6.93	124.53	118.30
1	A	35	ASP	CB-CG-OD1	6.87	124.48	118.30
1	A	203	ALA	N-CA-C	-6.81	92.61	111.00
1	A	67	ARG	NE-CZ-NH2	-6.76	116.92	120.30
1	B	232	ASP	CB-CG-OD2	-6.67	112.30	118.30
1	A	141	ARG	NE-CZ-NH2	-6.62	116.99	120.30
1	A	100	ASP	CB-CG-OD2	-6.61	112.35	118.30
1	A	356	ARG	NE-CZ-NH1	6.57	123.58	120.30
1	A	121	ASP	CB-CG-OD1	6.48	124.13	118.30
1	A	356	ARG	NE-CZ-NH2	-6.47	117.06	120.30
1	A	100	ASP	CB-CG-OD1	6.43	124.08	118.30
1	A	280	ARG	NE-CZ-NH2	-6.42	117.09	120.30
1	A	232	ASP	CB-CG-OD1	6.41	124.06	118.30
1	B	109	ASP	CB-CG-OD1	6.39	124.05	118.30
1	A	232	ASP	CB-CG-OD2	-6.34	112.60	118.30
1	B	323	ASP	CB-CG-OD1	6.32	123.99	118.30
1	B	203	ALA	N-CA-C	-6.16	94.38	111.00

Continued on next page...

Continued from previous page...

Mol	Chain	Res	Type	Atoms	Z	Observed(°)	Ideal(°)
1	B	35	ASP	CB-CG-OD1	6.08	123.77	118.30
1	A	133	ASP	CB-CG-OD2	-6.01	112.89	118.30
1	A	315	ASP	CB-CG-OD1	5.92	123.62	118.30
1	B	356	ARG	NE-CZ-NH1	5.90	123.25	120.30
1	B	319	ARG	NE-CZ-NH1	5.90	123.25	120.30
1	B	88	ARG	NE-CZ-NH1	5.90	123.25	120.30
1	A	139	ARG	NE-CZ-NH2	-5.88	117.36	120.30
1	A	208	ASP	CB-CG-OD1	5.83	123.55	118.30
1	A	36	ARG	NE-CZ-NH1	5.80	123.20	120.30
1	B	139	ARG	NE-CZ-NH2	-5.76	117.42	120.30
1	A	289	ASP	CB-CG-OD1	5.71	123.44	118.30
1	A	264	ASP	CB-CG-OD1	5.71	123.44	118.30
1	A	108	ARG	NE-CZ-NH2	-5.69	117.45	120.30
1	A	41	ARG	NE-CZ-NH2	-5.66	117.47	120.30
1	A	76	ARG	NE-CZ-NH1	5.62	123.11	120.30
1	B	105	ASP	CB-CG-OD2	-5.62	113.25	118.30
1	B	171	ALA	CB-CA-C	-5.60	101.70	110.10
1	B	253	ASP	CB-CG-OD1	5.59	123.33	118.30
1	A	208	ASP	CB-CG-OD2	-5.55	113.31	118.30
1	B	225	ARG	NE-CZ-NH1	5.54	123.07	120.30
1	A	225	ARG	NE-CZ-NH1	5.51	123.06	120.30
1	A	363	ARG	NE-CZ-NH1	5.50	123.05	120.30
1	B	160	ASP	CB-CG-OD1	5.44	123.20	118.30
1	A	108	ARG	NE-CZ-NH1	5.39	122.99	120.30
1	A	235	ASP	CB-CG-OD1	5.38	123.14	118.30
1	B	264	ASP	CB-CG-OD2	-5.34	113.49	118.30
1	B	337	ARG	NE-CZ-NH2	5.33	122.97	120.30
1	A	264	ASP	CB-CG-OD2	-5.29	113.53	118.30
1	B	289	ASP	CB-CG-OD1	5.28	123.05	118.30
1	A	319	ARG	NE-CZ-NH1	5.20	122.90	120.30
1	B	96	ARG	NE-CZ-NH1	5.11	122.86	120.30
1	B	91	ARG	NE-CZ-NH2	-5.07	117.76	120.30
1	B	331	ARG	NE-CZ-NH2	-5.07	117.77	120.30
1	B	89	ARG	NE-CZ-NH1	5.02	122.81	120.30

There are no chirality outliers.

There are no planarity outliers.

5.2 Too-close contacts

In the following table, the Non-H and H(model) columns list the number of non-hydrogen atoms and hydrogen atoms in the chain respectively. The H(added) column lists the number of hydrogen

atoms added and optimized by MolProbity. The Clashes column lists the number of clashes within the asymmetric unit, whereas Symm-Clashes lists symmetry related clashes.

Mol	Chain	Non-H	H(model)	H(added)	Clashes	Symm-Clashes
1	A	2554	0	2580	39	0
1	B	2546	0	2567	40	0
2	A	2	0	0	0	0
2	B	2	0	0	0	0
3	A	1	0	0	0	0
3	B	1	0	0	0	0
4	A	44	0	66	8	0
4	B	36	0	54	10	0
5	A	9	0	10	0	0
5	B	9	0	10	0	0
6	A	3	0	0	0	0
6	B	3	0	0	1	0
7	A	389	0	0	13	0
7	B	375	0	0	7	0
All	All	5974	0	5287	79	0

The all-atom clashscore is defined as the number of clashes found per 1000 atoms (including hydrogen atoms). The all-atom clashscore for this structure is 7.

All (79) close contacts within the same asymmetric unit are listed below, sorted by their clash magnitude.

Atom-1	Atom-2	Interatomic distance (Å)	Clash overlap (Å)
1:B:263:GLU:HA	7:B:954:HOH:O	1.82	0.80
1:A:335:PHE:O	1:A:338:GLU:HG3	1.82	0.78
1:A:207:ARG:NH2	1:A:236:ASP:OD2	2.17	0.78
1:B:96:ARG:HH11	4:B:424:EDO:C1	1.97	0.78
1:A:36:ARG:HD2	1:A:43:PRO:HB2	1.65	0.77
1:A:77:LYS:HE3	7:A:498:HOH:O	1.83	0.77
1:B:241:THR:HG21	1:B:290:GLN:HE21	1.53	0.73
1:B:96:ARG:HG3	4:B:424:EDO:H11	1.71	0.72
1:B:96:ARG:HH11	4:B:424:EDO:H12	1.55	0.72
1:A:222[A]:SER:HB2	1:A:363:ARG:HH21	1.51	0.71
1:B:319:ARG:NH2	7:B:782:HOH:O	2.30	0.64
1:A:38:ASN:ND2	7:A:837:HOH:O	2.31	0.64
1:B:314:MET:HB3	4:B:414:EDO:H22	1.81	0.62
1:A:237:LEU:O	1:A:241[B]:THR:HG22	2.00	0.62
1:A:269:SER:HB2	4:A:418:EDO:H11	1.81	0.61
1:B:96:ARG:HH11	4:B:424:EDO:H11	1.67	0.59
1:B:337:ARG:HD2	7:B:1076:HOH:O	2.01	0.59

Continued on next page...

Continued from previous page...

Atom-1	Atom-2	Interatomic distance (Å)	Clash overlap (Å)
1:A:236:ASP:OD1	1:A:238[A]:SER:OG	2.21	0.58
4:A:410:EDO:H22	7:A:838:HOH:O	2.03	0.58
1:A:262:LEU:HD12	1:A:262:LEU:N	2.19	0.58
1:A:309:TYR:HA	1:B:140:LEU:HD12	1.85	0.58
1:B:50:GLY:HA3	4:B:424:EDO:H22	1.86	0.58
1:B:110[B]:VAL:CG1	1:B:163:ILE:HD12	2.34	0.58
1:B:110[B]:VAL:CG1	1:B:163:ILE:CD1	2.84	0.56
1:B:110[B]:VAL:HG12	1:B:163:ILE:HD12	1.88	0.55
1:B:110[B]:VAL:HG13	1:B:163:ILE:HD13	1.90	0.54
1:A:266:ALA:C	4:A:418:EDO:HO2	2.10	0.54
1:B:96:ARG:CG	4:B:424:EDO:H11	2.38	0.53
1:A:362:LEU:HA	7:A:1181:HOH:O	2.09	0.52
1:A:309:TYR:CA	1:B:140:LEU:HD12	2.39	0.51
1:B:220:GLY:O	1:B:363:ARG:NH1	2.44	0.51
1:A:335:PHE:HA	1:A:338:GLU:CG	2.42	0.50
1:A:309:TYR:HA	1:B:140:LEU:CD1	2.41	0.50
1:B:110[A]:VAL:CG2	1:B:163:ILE:HG21	2.42	0.50
1:B:333:ILE:HB	1:B:334:PRO:HD3	1.92	0.50
1:B:38:ASN:ND2	7:B:634:HOH:O	2.46	0.49
1:B:96:ARG:NH1	4:B:424:EDO:H12	2.26	0.49
1:A:109:ASP:OD1	1:A:111[A]:SER:OG	2.27	0.49
1:A:363:ARG:HB3	7:A:855:HOH:O	2.12	0.48
1:B:57:HIS:O	1:B:303:LEU:HA	2.12	0.48
4:A:410:EDO:H11	7:A:541:HOH:O	2.12	0.48
1:A:266:ALA:HB1	4:A:418:EDO:O2	2.12	0.48
1:A:200:THR:O	1:A:229:GLY:HA3	2.13	0.48
1:A:292:TYR:HB3	1:A:295[A]:GLN:HG3	1.95	0.47
1:B:263:GLU:CD	1:B:263:GLU:H	2.19	0.47
4:A:416:EDO:C1	7:A:537:HOH:O	2.63	0.47
1:A:242:ALA:HB3	7:A:907:HOH:O	2.15	0.46
1:A:106:ILE:O	1:A:106:ILE:HG22	2.15	0.46
1:A:302:TRP:CH2	1:A:321:ASN:HB3	2.51	0.46
1:A:57:HIS:O	1:A:303:LEU:HA	2.16	0.46
1:A:38:ASN:ND2	7:A:437:HOH:O	2.49	0.46
1:A:279:THR:OG1	4:A:419:EDO:H12	2.16	0.46
1:B:311:THR:O	1:B:312:ASN:HB2	2.15	0.46
1:A:312:ASN:HA	7:A:610:HOH:O	2.15	0.46
1:B:298[A]:VAL:HG23	7:B:651:HOH:O	2.15	0.45
1:B:302:TRP:CH2	1:B:321:ASN:HB3	2.51	0.45
1:B:353:ASN:HB2	1:B:354:PRO:HD3	1.99	0.45
1:A:202:THR:HB	1:A:208:ASP:HB2	1.98	0.45

Continued on next page...

Continued from previous page...

Atom-1	Atom-2	Interatomic distance (Å)	Clash overlap (Å)
1:A:236:ASP:CG	1:A:239:TYR:H	2.20	0.44
1:B:311:THR:O	1:B:312:ASN:CB	2.65	0.43
1:A:334:PRO:O	1:A:338:GLU:HG2	2.19	0.43
1:B:337:ARG:HH12	1:B:343:GLN:HB2	1.83	0.43
1:B:180:GLN:NE2	4:B:421:EDO:H12	2.34	0.43
1:A:222[B]:SER:OG	1:A:363:ARG:NH2	2.30	0.42
1:A:236:ASP:CB	7:A:1154:HOH:O	2.66	0.42
4:A:416:EDO:H12	7:A:537:HOH:O	2.18	0.42
1:B:180:GLN:HE21	4:B:421:EDO:H12	1.84	0.42
1:B:84:VAL:O	1:B:88:ARG:HG3	2.19	0.42
1:A:353:ASN:HB2	1:A:354:PRO:HD3	2.02	0.42
1:B:201:HIS:HB2	6:B:369:FMT:O2	2.19	0.42
1:B:263:GLU:HG3	7:B:954:HOH:O	2.19	0.42
1:B:118[A]:ARG:NH1	7:B:1165:HOH:O	2.23	0.42
1:A:207:ARG:HH11	1:A:207:ARG:HD3	1.76	0.41
1:A:260:ILE:O	1:A:262:LEU:HD12	2.21	0.41
1:B:110[A]:VAL:HG21	1:B:163:ILE:HG21	2.02	0.40
1:A:43:PRO:HB3	7:A:837:HOH:O	2.22	0.40
1:B:106:ILE:O	1:B:106:ILE:HG22	2.21	0.40
1:A:140:LEU:HD12	1:B:309:TYR:HA	2.03	0.40

There are no symmetry-related clashes.

5.3 Torsion angles [i](#)

5.3.1 Protein backbone [i](#)

In the following table, the Percentiles column shows the percent Ramachandran outliers of the chain as a percentile score with respect to all X-ray entries followed by that with respect to entries of similar resolution.

The Analysed column shows the number of residues for which the backbone conformation was analysed, and the total number of residues.

Mol	Chain	Analysed	Favoured	Allowed	Outliers	Percentiles	
1	A	339/332 (102%)	326 (96%)	13 (4%)	0	100	100
1	B	337/332 (102%)	329 (98%)	8 (2%)	0	100	100
All	All	676/664 (102%)	655 (97%)	21 (3%)	0	100	100

There are no Ramachandran outliers to report.

5.3.2 Protein sidechains ⓘ

In the following table, the Percentiles column shows the percent sidechain outliers of the chain as a percentile score with respect to all X-ray entries followed by that with respect to entries of similar resolution.

The Analysed column shows the number of residues for which the sidechain conformation was analysed, and the total number of residues.

Mol	Chain	Analysed	Rotameric	Outliers	Percentiles
1	A	276/266 (104%)	267 (97%)	9 (3%)	45 7
1	B	274/266 (103%)	271 (99%)	3 (1%)	80 47
All	All	550/532 (103%)	538 (98%)	12 (2%)	65 17

All (12) residues with a non-rotameric sidechain are listed below:

Mol	Chain	Res	Type
1	A	262	LEU
1	A	295[A]	GLN
1	A	295[B]	GLN
1	A	295[C]	GLN
1	A	299	SER
1	A	303	LEU
1	A	338	GLU
1	A	342	PRO
1	A	363	ARG
1	B	36	ARG
1	B	299	SER
1	B	303	LEU

Some sidechains can be flipped to improve hydrogen bonding and reduce clashes. All (5) such sidechains are listed below:

Mol	Chain	Res	Type
1	A	38	ASN
1	A	212	GLN
1	B	38	ASN
1	B	212	GLN
1	B	290	GLN

5.3.3 RNA ⓘ

There are no RNA molecules in this entry.

5.4 Non-standard residues in protein, DNA, RNA chains [i](#)

There are no non-standard protein/DNA/RNA residues in this entry.

5.5 Carbohydrates [i](#)

There are no carbohydrates in this entry.

5.6 Ligand geometry [i](#)

Of 30 ligands modelled in this entry, 6 are monoatomic - leaving 24 for Mogul analysis.

In the following table, the Counts columns list the number of bonds (or angles) for which Mogul statistics could be retrieved, the number of bonds (or angles) that are observed in the model and the number of bonds (or angles) that are defined in the chemical component dictionary. The Link column lists molecule types, if any, to which the group is linked. The Z score for a bond length (or angle) is the number of standard deviations the observed value is removed from the expected value. A bond length (or angle) with $|Z| > 2$ is considered an outlier worth inspection. RMSZ is the root-mean-square of all Z scores of the bond lengths (or angles).

Mol	Type	Chain	Res	Link	Bond lengths			Bond angles		
					Counts	RMSZ	$\# Z > 2$	Counts	RMSZ	$\# Z > 2$
6	FMT	A	369	1,2	0,2,2	0.00	-	0,1,1	0.00	-
4	EDO	A	408	-	3,3,3	0.38	0	2,2,2	0.53	0
4	EDO	A	410	-	3,3,3	0.59	0	2,2,2	0.16	0
4	EDO	A	411	-	3,3,3	0.51	0	2,2,2	1.01	0
4	EDO	A	412	-	3,3,3	0.41	0	2,2,2	0.47	0
4	EDO	A	416	-	3,3,3	0.70	0	2,2,2	0.13	0
4	EDO	A	417	-	3,3,3	0.39	0	2,2,2	0.70	0
4	EDO	A	418	-	3,3,3	0.48	0	2,2,2	0.49	0
4	EDO	A	419	-	3,3,3	0.47	0	2,2,2	0.37	0
4	EDO	A	420	-	3,3,3	0.53	0	2,2,2	0.44	0
4	EDO	A	425	-	3,3,3	0.43	0	2,2,2	0.47	0
4	EDO	A	426	-	3,3,3	0.43	0	2,2,2	0.46	0
5	PEL	A	428	-	9,9,9	1.20	0	10,10,10	0.82	0
6	FMT	B	369	1,2	0,2,2	0.00	-	0,1,1	0.00	-
4	EDO	B	407	-	3,3,3	0.30	0	2,2,2	1.15	0
4	EDO	B	409	-	3,3,3	0.34	0	2,2,2	0.46	0
4	EDO	B	413	-	3,3,3	0.42	0	2,2,2	0.65	0
4	EDO	B	414	-	3,3,3	0.40	0	2,2,2	0.59	0
4	EDO	B	415	-	3,3,3	0.49	0	2,2,2	0.81	0
4	EDO	B	421	-	3,3,3	0.45	0	2,2,2	0.02	0
4	EDO	B	422	-	3,3,3	0.33	0	2,2,2	0.58	0
4	EDO	B	423	-	3,3,3	0.22	0	2,2,2	0.93	0

Mol	Type	Chain	Res	Link	Bond lengths			Bond angles		
					Counts	RMSZ	# Z > 2	Counts	RMSZ	# Z > 2
4	EDO	B	424	-	3,3,3	0.48	0	2,2,2	0.28	0
5	PEL	B	427	-	9,9,9	1.33	0	10,10,10	0.88	1 (10%)

In the following table, the Chirals column lists the number of chiral outliers, the number of chiral centers analysed, the number of these observed in the model and the number defined in the chemical component dictionary. Similar counts are reported in the Torsion and Rings columns. '-' means no outliers of that kind were identified.

Mol	Type	Chain	Res	Link	Chirals	Torsions	Rings
6	FMT	A	369	1,2	-	0/0/0/0	0/0/0/0
4	EDO	A	408	-	-	0/1/1/1	0/0/0/0
4	EDO	A	410	-	-	0/1/1/1	0/0/0/0
4	EDO	A	411	-	-	0/1/1/1	0/0/0/0
4	EDO	A	412	-	-	0/1/1/1	0/0/0/0
4	EDO	A	416	-	-	0/1/1/1	0/0/0/0
4	EDO	A	417	-	-	0/1/1/1	0/0/0/0
4	EDO	A	418	-	-	0/1/1/1	0/0/0/0
4	EDO	A	419	-	-	0/1/1/1	0/0/0/0
4	EDO	A	420	-	-	0/1/1/1	0/0/0/0
4	EDO	A	425	-	-	0/1/1/1	0/0/0/0
4	EDO	A	426	-	-	0/1/1/1	0/0/0/0
5	PEL	A	428	-	-	0/3/3/3	0/1/1/1
6	FMT	B	369	1,2	-	0/0/0/0	0/0/0/0
4	EDO	B	407	-	-	0/1/1/1	0/0/0/0
4	EDO	B	409	-	-	0/1/1/1	0/0/0/0
4	EDO	B	413	-	-	0/1/1/1	0/0/0/0
4	EDO	B	414	-	-	0/1/1/1	0/0/0/0
4	EDO	B	415	-	-	0/1/1/1	0/0/0/0
4	EDO	B	421	-	-	0/1/1/1	0/0/0/0
4	EDO	B	422	-	-	0/1/1/1	0/0/0/0
4	EDO	B	423	-	-	0/1/1/1	0/0/0/0
4	EDO	B	424	-	-	0/1/1/1	0/0/0/0
5	PEL	B	427	-	-	0/3/3/3	0/1/1/1

There are no bond length outliers.

All (1) bond angle outliers are listed below:

Mol	Chain	Res	Type	Atoms	Z	Observed(°)	Ideal(°)
5	B	427	PEL	C4'-C3'-C2'	-2.01	117.24	120.19

There are no chirality outliers.

There are no torsion outliers.

There are no ring outliers.

8 monomers are involved in 19 short contacts:

Mol	Chain	Res	Type	Clashes	Symm-Clashes
4	A	410	EDO	2	0
4	A	416	EDO	2	0
4	A	418	EDO	3	0
4	A	419	EDO	1	0
6	B	369	FMT	1	0
4	B	414	EDO	1	0
4	B	421	EDO	2	0
4	B	424	EDO	7	0

5.7 Other polymers

There are no such residues in this entry.

5.8 Polymer linkage issues

There are no chain breaks in this entry.

6 Fit of model and data [i](#)

6.1 Protein, DNA and RNA chains [i](#)

EDS was not executed - this section will therefore be empty.

6.2 Non-standard residues in protein, DNA, RNA chains [i](#)

EDS was not executed - this section will therefore be empty.

6.3 Carbohydrates [i](#)

EDS was not executed - this section will therefore be empty.

6.4 Ligands [i](#)

EDS was not executed - this section will therefore be empty.

6.5 Other polymers [i](#)

EDS was not executed - this section will therefore be empty.