



Full wwPDB X-ray Structure Validation Report ⓘ

Jan 31, 2016 – 07:57 PM GMT

PDB ID : 1I1M
Title : CRYSTAL STRUCTURE OF ESCHERICHIA COLI BRANCHED-CHAIN AMINO ACID AMINOTRANSFERASE.
Authors : Okada, K.; Hirotsu, K.; Hayashi, H.; Kagamiyama, H.
Deposited on : 2001-02-02
Resolution : 2.40 Å(reported)

This is a Full wwPDB X-ray Structure Validation Report for a publicly released PDB entry.
We welcome your comments at validation@mail.wwpdb.org
A user guide is available at
<http://wwpdb.org/validation/2016/XrayValidationReportHelp>
with specific help available everywhere you see the ⓘ symbol.

The following versions of software and data (see [references ⓘ](#)) were used in the production of this report:

MolProbity : 4.02b-467
Mogul : 1.7 (RC4), CSD as536be (2015)
Xtriage (Phenix) : **NOT EXECUTED**
EDS : **NOT EXECUTED**
Percentile statistics : 20151230.v01 (using entries in the PDB archive December 30th 2015)
Ideal geometry (proteins) : Engh & Huber (2001)
Ideal geometry (DNA, RNA) : Parkinson et al. (1996)
Validation Pipeline (wwPDB-VP) : trunk26865

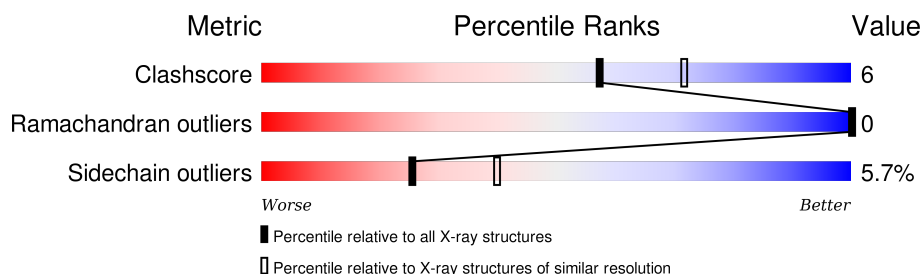
1 Overall quality at a glance

The following experimental techniques were used to determine the structure:

X-RAY DIFFRACTION

The reported resolution of this entry is 2.40 Å.

Percentile scores (ranging between 0-100) for global validation metrics of the entry are shown in the following graphic. The table shows the number of entries on which the scores are based.



Metric	Whole archive (#Entries)	Similar resolution (#Entries, resolution range(Å))
Clashscore	102246	3407 (2.40-2.40)
Ramachandran outliers	100387	3351 (2.40-2.40)
Sidechain outliers	100360	3352 (2.40-2.40)

The table below summarises the geometric issues observed across the polymeric chains and their fit to the electron density. The red, orange, yellow and green segments on the lower bar indicate the fraction of residues that contain outliers for ≥ 3 , 2, 1 and 0 types of geometric quality criteria. A grey segment represents the fraction of residues that are not modelled. The numeric value for each fraction is indicated below the corresponding segment, with a dot representing fractions $\leq 5\%$. The upper red bar (where present) indicates the fraction of residues that have poor fit to the electron density. The numeric value is given above the bar.

Note EDS was not executed.

Mol	Chain	Length	Quality of chain
1	A	309	 83% 14% . .
1	B	309	 80% 16% . .
1	C	309	 81% 17% . .

2 Entry composition [i](#)

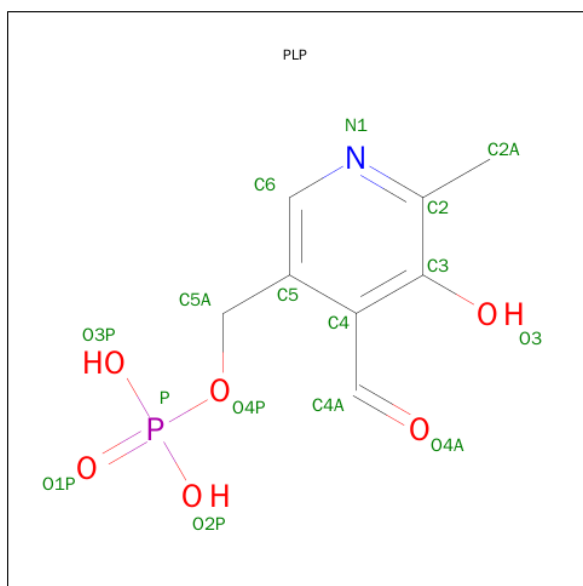
There are 4 unique types of molecules in this entry. The entry contains 7450 atoms, of which 0 are hydrogens and 0 are deuteriums.

In the tables below, the ZeroOcc column contains the number of atoms modelled with zero occupancy, the AltConf column contains the number of residues with at least one atom in alternate conformation and the Trace column contains the number of residues modelled with at most 2 atoms.

- Molecule 1 is a protein called BRANCHED-CHAIN AMINO ACID AMINOTRANSFERASE.

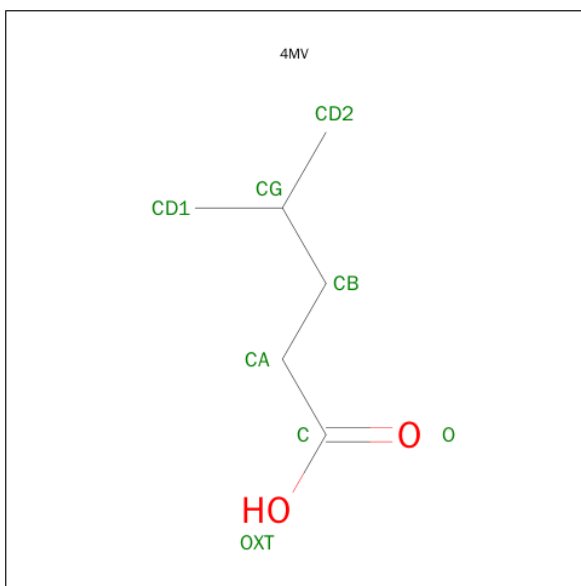
Mol	Chain	Residues	Atoms					ZeroOcc	AltConf	Trace
1	A	304	Total	C	N	O	S	0	0	0
			2362	1499	410	443	10			
1	B	304	Total	C	N	O	S	0	0	0
			2362	1499	410	443	10			
1	C	304	Total	C	N	O	S	0	0	0
			2362	1499	410	443	10			

- Molecule 2 is PYRIDOXAL-5'-PHOSPHATE (three-letter code: PLP) (formula: C₈H₁₀NO₆P).



Mol	Chain	Residues	Atoms					ZeroOcc	AltConf
2	A	1	Total	C	N	O	P	0	0
			15	8	1	5	1		
2	B	1	Total	C	N	O	P	0	0
			15	8	1	5	1		
2	C	1	Total	C	N	O	P	0	0
			15	8	1	5	1		

- Molecule 3 is 4-METHYL VALERIC ACID (three-letter code: 4MV) (formula: $C_6H_{12}O_2$).



Mol	Chain	Residues	Atoms			ZeroOcc	AltConf
3	A	1	Total	C	O	0	0
			8	6	2		
3	B	1	Total	C	O	0	0
			8	6	2		
3	C	1	Total	C	O	0	0
			8	6	2		

- Molecule 4 is water.

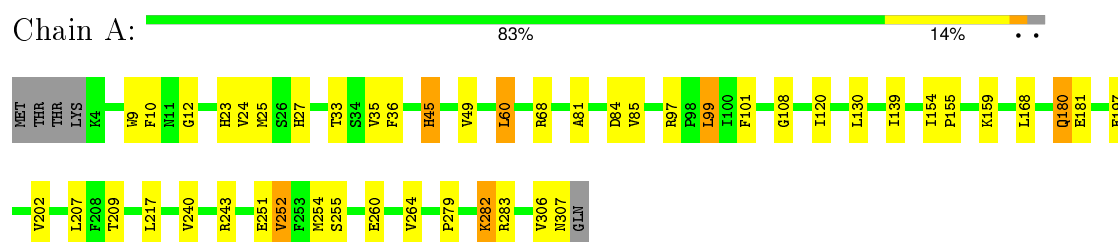
Mol	Chain	Residues	Atoms		ZeroOcc	AltConf
4	A	99	Total	O	0	0
			99	99		
4	B	96	Total	O	0	0
			96	96		
4	C	100	Total	O	0	0
			100	100		

3 Residue-property plots

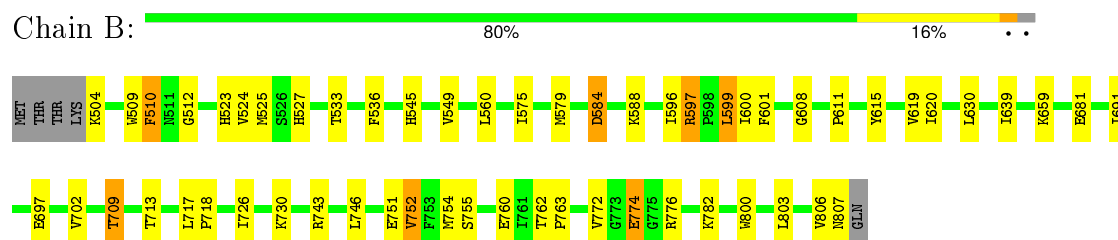
These plots are drawn for all protein, RNA and DNA chains in the entry. The first graphic for a chain summarises the proportions of errors displayed in the second graphic. The second graphic shows the sequence view annotated by issues in geometry and electron density. Residues are color-coded according to the number of geometric quality criteria for which they contain at least one outlier: green = 0, yellow = 1, orange = 2 and red = 3 or more. A red dot above a residue indicates a poor fit to the electron density ($RSRZ > 2$). Stretches of 2 or more consecutive residues without any outlier are shown as a green connector. Residues present in the sample, but not in the model, are shown in grey.

Note EDS was not executed.

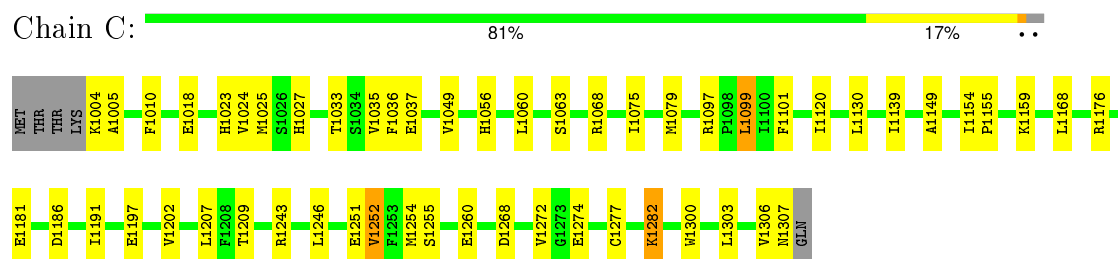
• Molecule 1: BRANCHED-CHAIN AMINO ACID AMINOTRANSFERASE



• Molecule 1: BRANCHED-CHAIN AMINO ACID AMINOTRANSFERASE



• Molecule 1: BRANCHED-CHAIN AMINO ACID AMINOTRANSFERASE



4 Data and refinement statistics

Xtriage (Phenix) and EDS were not executed - this section will therefore be incomplete.

Property	Value	Source
Space group	C 2 2 21	Depositor
Cell constants a, b, c, α , β , γ	155.99Å 100.71Å 141.53Å 90.00° 90.00° 90.00°	Depositor
Resolution (Å)	40.00 – 2.40	Depositor
% Data completeness (in resolution range)	(Not available) (40.00-2.40)	Depositor
R_{merge}	(Not available)	Depositor
R_{sym}	(Not available)	Depositor
Refinement program	X-PLOR 3.851	Depositor
R, R_{free}	0.173 , 0.215	Depositor
Estimated twinning fraction	No twinning to report.	Xtriage
Total number of atoms	7450	wwPDB-VP
Average B, all atoms (Å ²)	20.0	wwPDB-VP

5 Model quality [i](#)

5.1 Standard geometry [i](#)

Bond lengths and bond angles in the following residue types are not validated in this section: 4MV, PLP

The Z score for a bond length (or angle) is the number of standard deviations the observed value is removed from the expected value. A bond length (or angle) with $|Z| > 5$ is considered an outlier worth inspection. RMSZ is the root-mean-square of all Z scores of the bond lengths (or angles).

Mol	Chain	Bond lengths		Bond angles	
		RMSZ	$\# Z > 5$	RMSZ	$\# Z > 5$
1	A	0.38	1/2418 (0.0%)	0.62	0/3279
1	B	0.38	1/2418 (0.0%)	0.62	0/3279
1	C	0.37	1/2418 (0.0%)	0.63	0/3279
All	All	0.38	3/7254 (0.0%)	0.62	0/9837

All (3) bond length outliers are listed below:

Mol	Chain	Res	Type	Atoms	Z	Observed(Å)	Ideal(Å)
1	A	181	GLU	CD-OE2	7.09	1.33	1.25
1	B	681	GLU	CD-OE2	6.85	1.33	1.25
1	C	1181	GLU	CD-OE2	6.62	1.32	1.25

There are no bond angle outliers.

There are no chirality outliers.

There are no planarity outliers.

5.2 Too-close contacts [i](#)

In the following table, the Non-H and H(model) columns list the number of non-hydrogen atoms and hydrogen atoms in the chain respectively. The H(added) column lists the number of hydrogen atoms added and optimized by MolProbity. The Clashes column lists the number of clashes within the asymmetric unit, whereas Symm-Clashes lists symmetry related clashes.

Mol	Chain	Non-H	H(model)	H(added)	Clashes	Symm-Clashes
1	A	2362	0	2300	27	0
1	B	2362	0	2300	32	0
1	C	2362	0	2300	28	0
2	A	15	0	7	1	0
2	B	15	0	7	1	0

Continued on next page...

Continued from previous page...

Mol	Chain	Non-H	H(model)	H(added)	Clashes	Symm-Clashes
2	C	15	0	7	1	0
3	A	8	0	11	0	0
3	B	8	0	11	0	0
3	C	8	0	11	0	0
4	A	99	0	0	0	0
4	B	96	0	0	3	0
4	C	100	0	0	5	0
All	All	7450	0	6954	85	0

The all-atom clashscore is defined as the number of clashes found per 1000 atoms (including hydrogen atoms). The all-atom clashscore for this structure is 6.

All (85) close contacts within the same asymmetric unit are listed below, sorted by their clash magnitude.

Atom-1	Atom-2	Interatomic distance (Å)	Clash overlap (Å)
1:B:549:VAL:HG21	1:B:803:LEU:HB3	1.64	0.80
1:C:1149:ALA:HA	4:C:1:HOH:O	1.80	0.79
1:B:752:VAL:HG12	1:B:772:VAL:HG11	1.70	0.73
1:B:579:MET:SD	4:B:99:HOH:O	2.44	0.73
1:C:1049:VAL:HG11	1:C:1303:LEU:HB3	1.71	0.69
1:A:23:HIS:HD2	1:A:25:MET:H	1.41	0.66
1:C:1252:VAL:HG12	1:C:1272:VAL:HG11	1.78	0.66
1:B:630:LEU:HD13	1:B:639:ILE:HD13	1.78	0.65
1:A:27:HIS:HD2	1:A:33:THR:OG1	1.81	0.64
1:C:1027:HIS:HD2	1:C:1033:THR:OG1	1.83	0.61
1:B:774:GLU:HG2	1:B:776:ARG:HH21	1.65	0.60
1:A:252:VAL:HG22	1:A:264:VAL:HB	1.84	0.58
1:C:1036:PHE:HB3	1:C:1099:LEU:HD23	1.84	0.58
1:C:1004:LYS:HE3	4:C:103:HOH:O	2.04	0.58
1:A:81:ALA:O	1:A:85:VAL:HG23	2.03	0.58
1:B:575:ILE:O	1:B:579:MET:HG3	2.04	0.58
1:C:1130:LEU:HD13	1:C:1139:ILE:HD13	1.87	0.57
1:B:600:ILE:HG12	1:B:619:VAL:HG22	1.85	0.56
1:A:240:VAL:HG12	1:B:713:THR:HG21	1.86	0.56
1:B:709:THR:HG22	4:B:5:HOH:O	2.04	0.56
1:B:584:ASP:O	1:B:588:LYS:HB2	2.06	0.56
1:B:545:HIS:CD2	1:B:545:HIS:H	2.25	0.55
1:A:159:LYS:NZ	2:A:413:PLP:O3	2.38	0.55
1:C:1202:VAL:HB	1:C:1251:GLU:HB2	1.89	0.54
1:A:202:VAL:HB	1:A:251:GLU:HB2	1.90	0.54
1:C:1306:VAL:O	1:C:1307:ASN:HB2	2.09	0.53

Continued on next page...

Continued from previous page...

Atom-1	Atom-2	Interatomic distance (Å)	Clash overlap (Å)
1:C:1023:HIS:HD2	1:C:1025:MET:H	1.56	0.52
1:B:523:HIS:HD2	1:B:525:MET:HB2	1.74	0.51
1:B:510:PHE:CG	1:B:620:ILE:HD11	2.46	0.51
1:C:1197:GLU:HG3	1:C:1254:MET:HB3	1.92	0.51
1:A:36:PHE:HB3	1:A:99:LEU:HD23	1.93	0.51
1:A:306:VAL:O	1:A:307:ASN:HB2	2.11	0.50
1:A:35:VAL:HG12	1:A:60:LEU:HD23	1.94	0.50
1:A:9:TRP:CZ2	1:A:12:GLY:HA2	2.46	0.50
1:B:691:ILE:HD11	1:B:746:LEU:HG	1.94	0.49
1:B:596:ILE:N	1:B:596:ILE:HD12	2.28	0.49
1:A:23:HIS:CD2	1:A:25:MET:H	2.27	0.49
1:C:1023:HIS:CD2	1:C:1025:MET:H	2.31	0.48
1:A:282:LYS:HA	1:A:282:LYS:HE2	1.95	0.48
1:B:697:GLU:HG3	1:B:754:MET:HB3	1.96	0.48
1:A:99:LEU:HD13	1:A:101:PHE:CD2	2.49	0.48
1:C:1255:SER:HA	1:C:1260:GLU:O	2.15	0.47
1:C:1004:LYS:HG2	1:C:1005:ALA:N	2.29	0.47
1:A:35:VAL:HG12	1:A:60:LEU:CD2	2.45	0.47
1:B:806:VAL:O	1:B:807:ASN:HB2	2.15	0.47
1:B:599:LEU:HD13	1:B:601:PHE:CD2	2.50	0.47
1:A:23:HIS:HD2	1:A:25:MET:N	2.12	0.46
1:C:1037:GLU:OE2	1:C:1056:HIS:HD2	1.99	0.46
1:B:510:PHE:HA	1:B:620:ILE:HD13	1.96	0.46
1:C:1035:VAL:HG11	1:C:1063:SER:HB2	1.96	0.45
1:A:130:LEU:HD13	1:A:139:ILE:HD13	1.99	0.45
1:C:1277:CYS:SG	1:C:1282:LYS:HG2	2.56	0.45
1:B:527:HIS:HD2	1:B:533:THR:OG1	1.98	0.45
1:B:755:SER:HA	1:B:760:GLU:O	2.17	0.45
1:B:726:ILE:O	1:B:730:LYS:HG3	2.17	0.45
1:B:504:LYS:HD2	4:B:47:HOH:O	2.17	0.44
1:A:45:HIS:CD2	1:A:45:HIS:H	2.36	0.44
1:B:702:VAL:HB	1:B:751:GLU:HB2	2.00	0.44
1:A:97:ARG:HG3	1:A:97:ARG:O	2.16	0.44
1:A:279:PRO:O	1:A:283:ARG:HG3	2.18	0.43
1:C:1186:ASP:HB2	4:C:66:HOH:O	2.18	0.43
1:C:1068:ARG:HD2	4:C:216:HOH:O	2.18	0.43
1:A:197:GLU:HG3	1:A:254:MET:HB3	1.99	0.43
1:A:27:HIS:HE1	1:A:108:GLY:O	2.00	0.43
1:C:1099:LEU:HD13	1:C:1101:PHE:CD2	2.54	0.43
1:C:1176:ARG:HD2	4:C:49:HOH:O	2.18	0.43
1:B:509:TRP:CZ2	1:B:512:GLY:HA2	2.54	0.43

Continued on next page...

Continued from previous page...

Atom-1	Atom-2	Interatomic distance (Å)	Clash overlap (Å)
1:B:611:PRO:HB2	1:B:615:TYR:CE2	2.54	0.43
1:B:597:ARG:O	1:B:597:ARG:HG3	2.17	0.42
1:C:1191:ILE:HD11	1:C:1246:LEU:HG	2.00	0.42
1:A:68:ARG:NH2	1:C:1268:ASP:O	2.46	0.42
1:A:255:SER:HA	1:A:260:GLU:O	2.20	0.42
1:B:717:LEU:HA	1:B:718:PRO:HD3	1.86	0.41
1:C:1154:ILE:HA	1:C:1155:PRO:HD2	1.89	0.41
1:B:659:LYS:NZ	2:B:913:PLP:O3	2.53	0.41
1:C:1018:GLU:H	1:C:1018:GLU:CD	2.23	0.41
1:C:1075:ILE:O	1:C:1079:MET:HG3	2.20	0.41
1:C:1049:VAL:CG1	1:C:1303:LEU:HB3	2.46	0.41
1:C:1159:LYS:NZ	2:C:1413:PLP:O3	2.53	0.41
1:B:536:PHE:HB3	1:B:599:LEU:HD23	2.03	0.41
1:A:139:ILE:HB	1:A:180:GLN:HB2	2.02	0.41
1:A:99:LEU:HD13	1:A:101:PHE:HD2	1.85	0.40
1:B:527:HIS:HE1	1:B:608:GLY:O	2.04	0.40
1:A:154:ILE:HA	1:A:155:PRO:HD2	1.90	0.40
1:B:762:THR:HA	1:B:763:PRO:HD3	1.91	0.40

There are no symmetry-related clashes.

5.3 Torsion angles [i](#)

5.3.1 Protein backbone [i](#)

In the following table, the Percentiles column shows the percent Ramachandran outliers of the chain as a percentile score with respect to all X-ray entries followed by that with respect to entries of similar resolution.

The Analysed column shows the number of residues for which the backbone conformation was analysed, and the total number of residues.

Mol	Chain	Analysed	Favoured	Allowed	Outliers	Percentiles	
1	A	302/309 (98%)	288 (95%)	14 (5%)	0	100	100
1	B	302/309 (98%)	288 (95%)	14 (5%)	0	100	100
1	C	302/309 (98%)	288 (95%)	14 (5%)	0	100	100
All	All	906/927 (98%)	864 (95%)	42 (5%)	0	100	100

There are no Ramachandran outliers to report.

5.3.2 Protein sidechains ⓘ

In the following table, the Percentiles column shows the percent sidechain outliers of the chain as a percentile score with respect to all X-ray entries followed by that with respect to entries of similar resolution.

The Analysed column shows the number of residues for which the sidechain conformation was analysed, and the total number of residues.

Mol	Chain	Analysed	Rotameric	Outliers	Percentiles	
1	A	246/251 (98%)	230 (94%)	16 (6%)	21	33
1	B	246/251 (98%)	234 (95%)	12 (5%)	31	48
1	C	246/251 (98%)	232 (94%)	14 (6%)	25	40
All	All	738/753 (98%)	696 (94%)	42 (6%)	25	40

All (42) residues with a non-rotameric sidechain are listed below:

Mol	Chain	Res	Type
1	A	10	PHE
1	A	24	VAL
1	A	45	HIS
1	A	49	VAL
1	A	60	LEU
1	A	84	ASP
1	A	99	LEU
1	A	120	ILE
1	A	168	LEU
1	A	180	GLN
1	A	207	LEU
1	A	209	THR
1	A	217	LEU
1	A	243	ARG
1	A	252	VAL
1	A	282	LYS
1	B	510	PHE
1	B	524	VAL
1	B	560	LEU
1	B	584	ASP
1	B	597	ARG
1	B	599	LEU
1	B	709	THR
1	B	743	ARG
1	B	752	VAL
1	B	774	GLU

Continued on next page...

Continued from previous page...

Mol	Chain	Res	Type
1	B	782	LYS
1	B	800	TRP
1	C	1010	PHE
1	C	1024	VAL
1	C	1060	LEU
1	C	1097	ARG
1	C	1099	LEU
1	C	1120	ILE
1	C	1168	LEU
1	C	1207	LEU
1	C	1209	THR
1	C	1243	ARG
1	C	1252	VAL
1	C	1274	GLU
1	C	1282	LYS
1	C	1300	TRP

Some sidechains can be flipped to improve hydrogen bonding and reduce clashes. All (20) such sidechains are listed below:

Mol	Chain	Res	Type
1	A	23	HIS
1	A	27	HIS
1	A	45	HIS
1	A	56	HIS
1	A	137	GLN
1	A	147	ASN
1	A	198	ASN
1	A	307	ASN
1	B	523	HIS
1	B	527	HIS
1	B	545	HIS
1	B	556	HIS
1	B	647	ASN
1	B	698	ASN
1	C	1023	HIS
1	C	1027	HIS
1	C	1030	HIS
1	C	1045	HIS
1	C	1056	HIS
1	C	1307	ASN

5.3.3 RNA ⓘ

There are no RNA molecules in this entry.

5.4 Non-standard residues in protein, DNA, RNA chains ⓘ

There are no non-standard protein/DNA/RNA residues in this entry.

5.5 Carbohydrates ⓘ

There are no carbohydrates in this entry.

5.6 Ligand geometry ⓘ

6 ligands are modelled in this entry.

In the following table, the Counts columns list the number of bonds (or angles) for which Mogul statistics could be retrieved, the number of bonds (or angles) that are observed in the model and the number of bonds (or angles) that are defined in the chemical component dictionary. The Link column lists molecule types, if any, to which the group is linked. The Z score for a bond length (or angle) is the number of standard deviations the observed value is removed from the expected value. A bond length (or angle) with $|Z| > 2$ is considered an outlier worth inspection. RMSZ is the root-mean-square of all Z scores of the bond lengths (or angles).

Mol	Type	Chain	Res	Link	Bond lengths			Bond angles		
					Counts	RMSZ	# $ Z > 2$	Counts	RMSZ	# $ Z > 2$
2	PLP	A	413	1	15,15,16	1.89	1 (6%)	21,22,23	1.28	3 (14%)
3	4MV	A	414	-	4,7,7	0.19	0	5,8,8	0.15	0
2	PLP	B	913	1	15,15,16	1.66	2 (13%)	21,22,23	1.31	3 (14%)
3	4MV	B	914	-	4,7,7	0.18	0	5,8,8	0.24	0
2	PLP	C	1413	1	15,15,16	1.69	2 (13%)	21,22,23	1.16	2 (9%)
3	4MV	C	1414	-	4,7,7	0.25	0	5,8,8	0.25	0

In the following table, the Chirals column lists the number of chiral outliers, the number of chiral centers analysed, the number of these observed in the model and the number defined in the chemical component dictionary. Similar counts are reported in the Torsion and Rings columns. '-' means no outliers of that kind were identified.

Mol	Type	Chain	Res	Link	Chirals	Torsions	Rings
2	PLP	A	413	1	-	0/6/6/8	0/1/1/1
3	4MV	A	414	-	-	0/3/5/5	0/0/0/0
2	PLP	B	913	1	-	0/6/6/8	0/1/1/1

Continued on next page...

Continued from previous page...

Mol	Type	Chain	Res	Link	Chirals	Torsions	Rings
3	4MV	B	914	-	-	0/3/5/5	0/0/0/0
2	PLP	C	1413	1	-	0/6/6/8	0/1/1/1
3	4MV	C	1414	-	-	0/3/5/5	0/0/0/0

All (5) bond length outliers are listed below:

Mol	Chain	Res	Type	Atoms	Z	Observed(Å)	Ideal(Å)
2	A	413	PLP	C3-C2	-5.98	1.36	1.40
2	B	913	PLP	C3-C2	-4.71	1.37	1.40
2	C	1413	PLP	C3-C2	-4.18	1.37	1.40
2	B	913	PLP	P-O3P	-2.32	1.46	1.54
2	C	1413	PLP	P-O3P	-2.32	1.46	1.54

All (8) bond angle outliers are listed below:

Mol	Chain	Res	Type	Atoms	Z	Observed(°)	Ideal(°)
2	B	913	PLP	O2P-P-O4P	-3.17	97.45	106.56
2	A	413	PLP	O2P-P-O4P	-2.28	100.01	106.56
2	B	913	PLP	C6-C5-C4	2.04	119.88	118.15
2	A	413	PLP	O4P-C5A-C5	2.11	112.48	108.99
2	C	1413	PLP	C6-C5-C4	2.59	120.34	118.15
2	C	1413	PLP	O3P-P-O1P	2.70	119.28	110.58
2	B	913	PLP	O3P-P-O1P	3.10	120.57	110.58
2	A	413	PLP	O3P-P-O1P	3.36	121.38	110.58

There are no chirality outliers.

There are no torsion outliers.

There are no ring outliers.

3 monomers are involved in 3 short contacts:

Mol	Chain	Res	Type	Clashes	Symm-Clashes
2	A	413	PLP	1	0
2	B	913	PLP	1	0
2	C	1413	PLP	1	0

5.7 Other polymers ⓘ

There are no such residues in this entry.

5.8 Polymer linkage issues ⓘ

There are no chain breaks in this entry.

6 Fit of model and data [i](#)

6.1 Protein, DNA and RNA chains [i](#)

EDS was not executed - this section will therefore be empty.

6.2 Non-standard residues in protein, DNA, RNA chains [i](#)

EDS was not executed - this section will therefore be empty.

6.3 Carbohydrates [i](#)

EDS was not executed - this section will therefore be empty.

6.4 Ligands [i](#)

EDS was not executed - this section will therefore be empty.

6.5 Other polymers [i](#)

EDS was not executed - this section will therefore be empty.