



Full wwPDB X-ray Structure Validation Report ⓘ

Feb 1, 2016 – 09:21 AM GMT

PDB ID : 3I4B
Title : Crystal structure of GSK3b in complex with a pyrimidylpyrrole inhibitor
Authors : Ter Haar, E.
Deposited on : 2009-07-01
Resolution : 2.30 Å(reported)

This is a Full wwPDB X-ray Structure Validation Report for a publicly released PDB entry.
We welcome your comments at validation@mail.wwpdb.org
A user guide is available at
<http://wwpdb.org/validation/2016/XrayValidationReportHelp>
with specific help available everywhere you see the ⓘ symbol.

The following versions of software and data (see [references ⓘ](#)) were used in the production of this report:

MolProbity : 4.02b-467
Mogul : 1.7 (RC4), CSD as536be (2015)
Xtriage (Phenix) : 1.9-1692
EDS : rb-20026688
Percentile statistics : 20151230.v01 (using entries in the PDB archive December 30th 2015)
Refmac : 5.8.0135
CCP4 : 6.5.0
Ideal geometry (proteins) : Engh & Huber (2001)
Ideal geometry (DNA, RNA) : Parkinson et al. (1996)
Validation Pipeline (wwPDB-VP) : trunk26865

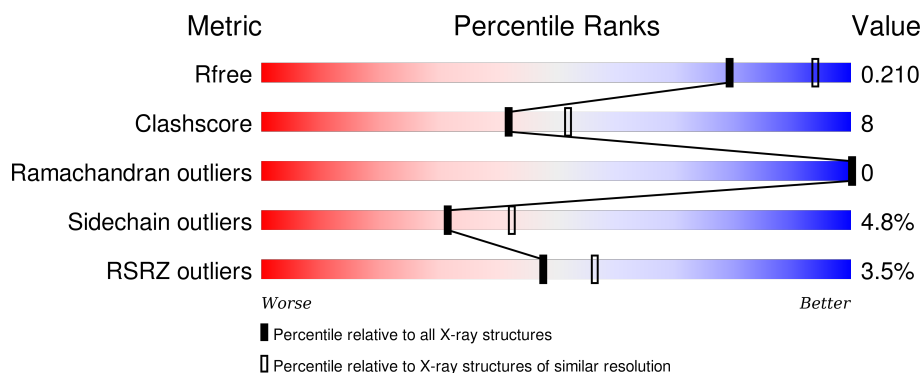
1 Overall quality at a glance

The following experimental techniques were used to determine the structure:

X-RAY DIFFRACTION


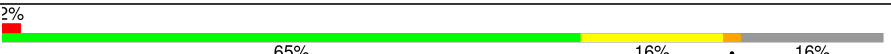
The reported resolution of this entry is 2.30 Å.

Percentile scores (ranging between 0-100) for global validation metrics of the entry are shown in the following graphic. The table shows the number of entries on which the scores are based.



Metric	Whole archive (#Entries)	Similar resolution (#Entries, resolution range(Å))
R_{free}	91344	3852 (2.30-2.30)
Clashscore	102246	4452 (2.30-2.30)
Ramachandran outliers	100387	4410 (2.30-2.30)
Sidechain outliers	100360	4409 (2.30-2.30)
RSRZ outliers	91569	3857 (2.30-2.30)

The table below summarises the geometric issues observed across the polymeric chains and their fit to the electron density. The red, orange, yellow and green segments on the lower bar indicate the fraction of residues that contain outliers for ≥ 3 , 2, 1 and 0 types of geometric quality criteria. A grey segment represents the fraction of residues that are not modelled. The numeric value for each fraction is indicated below the corresponding segment, with a dot representing fractions $\leq 5\%$. The upper red bar (where present) indicates the fraction of residues that have poor fit to the electron density. The numeric value is given above the bar.

Mol	Chain	Length	Quality of chain
1	A	414	
1	B	414	

2 Entry composition [i](#)

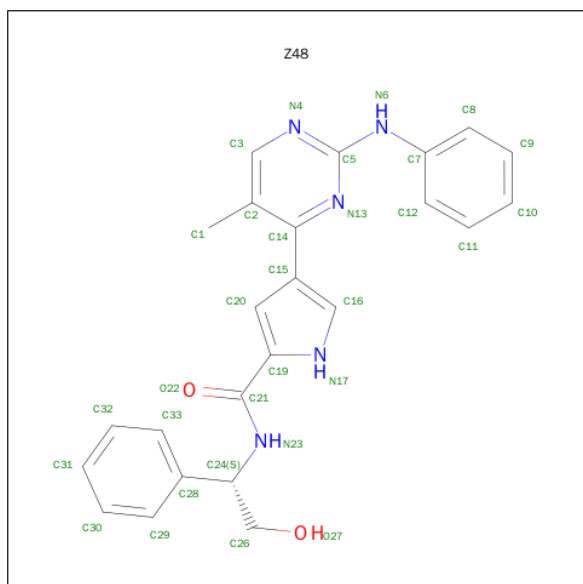
There are 3 unique types of molecules in this entry. The entry contains 6342 atoms, of which 0 are hydrogens and 0 are deuteriums.

In the tables below, the ZeroOcc column contains the number of atoms modelled with zero occupancy, the AltConf column contains the number of residues with at least one atom in alternate conformation and the Trace column contains the number of residues modelled with at most 2 atoms.

- Molecule 1 is a protein called Glycogen synthase kinase-3 beta.

Mol	Chain	Residues	Atoms					ZeroOcc	AltConf	Trace
1	A	359	Total	C	N	O	S	0	0	0
			2821	1815	484	510	12			
1	B	347	Total	C	N	O	S	0	0	0
			2724	1756	457	500	11			

- Molecule 2 is N-[(1S)-2-HYDROXY-1-PHENYLETHYL]-4-[5-METHYL-2-(PHENYLAMINO)PYRIMIDIN-4-YL]-1H-PYRROLE-2-CARBOXAMIDE (three-letter code: Z48) (formula: C₂₄H₂₃N₅O₂).



Mol	Chain	Residues	Atoms				ZeroOcc	AltConf
2	A	1	Total	C	N	O	0	0
			31	24	5	2		
2	B	1	Total	C	N	O	0	0
			31	24	5	2		

- Molecule 3 is water.

Mol	Chain	Residues	Atoms		ZeroOcc	AltConf
3	A	368	Total 368	O 368	0	0
3	B	367	Total 367	O 367	0	0

4 Data and refinement statistics

Property	Value	Source
Space group	P 21 21 21	Depositor
Cell constants a, b, c, α , β , γ	82.75Å 86.10Å 178.29Å 90.00° 90.00° 90.00°	Depositor
Resolution (Å)	37.35 – 2.30 37.34 – 2.31	Depositor EDS
% Data completeness (in resolution range)	90.7 (37.35-2.30) 90.9 (37.34-2.31)	Depositor EDS
R_{merge}	0.06	Depositor
R_{sym}	(Not available)	Depositor
$\langle I/\sigma(I) \rangle$ ¹	4.56 (at 2.31Å)	Xtriage
Refinement program	BUSTER-TNT 2.5.1	Depositor
R, R_{free}	0.179 , 0.222 0.172 , 0.210	Depositor DCC
R_{free} test set	2635 reflections (5.37%)	DCC
Wilson B-factor (Å ²)	29.4	Xtriage
Anisotropy	0.532	Xtriage
Bulk solvent k_{sol} (e/Å ³), B_{sol} (Å ²)	0.33 , 62.9	EDS
Estimated twinning fraction	0.019 for k,h,-l	Xtriage
L-test for twinning ²	$\langle L \rangle = 0.49$, $\langle L^2 \rangle = 0.32$	Xtriage
Outliers	0 of 51693 reflections	Xtriage
F_o, F_c correlation	0.95	EDS
Total number of atoms	6342	wwPDB-VP
Average B, all atoms (Å ²)	36.0	wwPDB-VP

Xtriage's analysis on translational NCS is as follows: *The largest off-origin peak in the Patterson function is 3.61% of the height of the origin peak. No significant pseudotranslation is detected.*

¹Intensities estimated from amplitudes.

²Theoretical values of $\langle |L| \rangle$, $\langle L^2 \rangle$ for acentric reflections are 0.5, 0.375 respectively for untwinned datasets, and 0.333, 0.2 for perfectly twinned datasets.

5 Model quality

5.1 Standard geometry

Bond lengths and bond angles in the following residue types are not validated in this section: Z48

The Z score for a bond length (or angle) is the number of standard deviations the observed value is removed from the expected value. A bond length (or angle) with $|Z| > 5$ is considered an outlier worth inspection. RMSZ is the root-mean-square of all Z scores of the bond lengths (or angles).

Mol	Chain	Bond lengths		Bond angles	
		RMSZ	$\# Z > 5$	RMSZ	$\# Z > 5$
1	A	0.70	2/2891 (0.1%)	0.75	3/3937 (0.1%)
1	B	0.72	1/2793 (0.0%)	0.77	3/3812 (0.1%)
All	All	0.71	3/5684 (0.1%)	0.76	6/7749 (0.1%)

Chiral center outliers are detected by calculating the chiral volume of a chiral center and verifying if the center is modelled as a planar moiety or with the opposite hand. A planarity outlier is detected by checking planarity of atoms in a peptide group, atoms in a mainchain group or atoms of a sidechain that are expected to be planar.

Mol	Chain	#Chirality outliers	#Planarity outliers
1	B	0	1

All (3) bond length outliers are listed below:

Mol	Chain	Res	Type	Atoms	Z	Observed(Å)	Ideal(Å)
1	A	222	TYR	CD1-CE1	-5.62	1.30	1.39
1	A	221	TYR	CD1-CE1	-5.29	1.31	1.39
1	B	317	CYS	CB-SG	-5.24	1.73	1.81

All (6) bond angle outliers are listed below:

Mol	Chain	Res	Type	Atoms	Z	Observed(°)	Ideal(°)
1	B	223	ARG	NE-CZ-NH2	-8.13	116.23	120.30
1	A	223	ARG	NE-CZ-NH2	-6.37	117.12	120.30
1	A	223	ARG	NE-CZ-NH1	6.14	123.37	120.30
1	A	221	TYR	CB-CA-C	-5.87	98.67	110.40
1	B	96	ARG	NE-CZ-NH2	-5.82	117.39	120.30
1	B	221	TYR	CB-CA-C	-5.74	98.92	110.40

There are no chirality outliers.

All (1) planarity outliers are listed below:

Mol	Chain	Res	Type	Group
1	B	282	ARG	Sidechain

5.2 Too-close contacts

In the following table, the Non-H and H(model) columns list the number of non-hydrogen atoms and hydrogen atoms in the chain respectively. The H(added) column lists the number of hydrogen atoms added and optimized by MolProbity. The Clashes column lists the number of clashes within the asymmetric unit, whereas Symm-Clashes lists symmetry related clashes.

Mol	Chain	Non-H	H(model)	H(added)	Clashes	Symm-Clashes
1	A	2821	0	2806	40	0
1	B	2724	0	2700	50	0
2	A	31	0	23	2	0
2	B	31	0	23	2	0
3	A	368	0	0	6	0
3	B	367	0	0	9	0
All	All	6342	0	5552	94	0

The all-atom clashscore is defined as the number of clashes found per 1000 atoms (including hydrogen atoms). The all-atom clashscore for this structure is 8.

All (94) close contacts within the same asymmetric unit are listed below, sorted by their clash magnitude.

Atom-1	Atom-2	Interatomic distance (Å)	Clash overlap (Å)
1:B:89:GLN:OE1	3:B:735:HOH:O	1.63	1.13
1:B:89:GLN:HE22	1:B:95:ASN:HB2	1.15	1.07
1:A:294:PRO:HG2	1:A:296:ILE:HD11	1.42	0.98
1:A:345:ASP:O	1:A:348:VAL:HG22	1.71	0.90
1:A:50:ARG:NH2	3:A:445:HOH:O	2.00	0.81
1:B:300:PRO:HG2	1:B:303:LYS:HD3	1.64	0.80
1:B:278:ARG:HG2	1:B:278:ARG:HH11	1.47	0.78
1:B:277:THR:HG22	1:B:280:GLN:H	1.50	0.77
1:B:277:THR:HG23	1:B:279:GLU:H	1.51	0.76
1:A:294:PRO:O	1:A:296:ILE:HD12	1.87	0.75
1:A:371:PRO:HB2	1:A:372:PRO:HD3	1.73	0.71
1:A:26:MET:HB2	1:A:40:VAL:HG12	1.73	0.69
1:B:113:ARG:NE	1:B:133:ASP:OD2	2.23	0.69
1:B:81:LEU:O	3:B:742:HOH:O	2.12	0.67
1:A:145:HIS:HD2	1:A:148:ARG:HH22	1.42	0.66

Continued on next page...

Continued from previous page...

Atom-1	Atom-2	Interatomic distance (Å)	Clash overlap (Å)
1:B:218:CYS:O	1:B:223:ARG:HD3	1.96	0.66
1:B:371:PRO:HB2	1:B:372:PRO:HD3	1.80	0.64
2:B:501:Z48:H1	2:B:501:Z48:H20	1.80	0.63
1:A:294:PRO:CG	1:A:296:ILE:HD11	2.26	0.61
1:B:279:GLU:O	1:B:283:GLU:HG2	2.01	0.59
1:A:342:GLU:O	1:A:348:VAL:HG11	2.02	0.59
1:B:278:ARG:HD3	1:B:291:PHE:CE1	2.38	0.58
2:A:501:Z48:H20	2:A:501:Z48:H1	1.84	0.58
1:B:349:LYS:NZ	1:B:355:ASP:OD1	2.29	0.57
1:B:278:ARG:HH11	1:B:278:ARG:CG	2.15	0.56
1:B:89:GLN:NE2	1:B:95:ASN:HB2	2.01	0.55
1:B:280:GLN:HA	1:B:283:GLU:HG3	1.89	0.55
1:B:80:GLU:OE2	1:B:113:ARG:NH2	2.28	0.55
1:A:185:GLN:HG3	3:A:745:HOH:O	2.07	0.55
2:B:501:Z48:H1	2:B:501:Z48:C20	2.36	0.55
1:A:352:ASN:O	1:A:352:ASN:OD1	2.25	0.54
1:A:113:ARG:NE	1:A:133:ASP:OD1	2.36	0.53
1:B:279:GLU:OE2	1:B:282:ARG:NH2	2.40	0.53
1:A:145:HIS:CD2	1:A:148:ARG:HH22	2.24	0.52
1:A:359:LEU:HD12	3:A:697:HOH:O	2.07	0.52
1:B:161:TYR:CE1	1:B:189:LEU:HD22	2.44	0.52
1:B:344:ARG:O	1:B:381:HIS:HE1	1.91	0.52
1:A:189:LEU:C	1:A:189:LEU:HD12	2.31	0.51
1:B:282:ARG:HG2	1:B:282:ARG:HH11	1.76	0.51
1:A:352:ASN:HD21	1:A:354:ARG:HD3	1.75	0.51
1:B:306:ARG:HD3	3:B:488:HOH:O	2.11	0.51
1:A:120:GLY:HA3	1:A:127:TYR:CE2	2.46	0.51
1:B:108:ASN:HD21	1:B:164:GLN:HE21	1.59	0.50
1:A:221:TYR:CD1	1:A:258:PRO:HA	2.47	0.50
1:A:381:HIS:HA	1:A:384:ILE:HD12	1.92	0.50
1:A:145:HIS:HD2	1:A:148:ARG:NH2	2.09	0.49
1:B:277:THR:CG2	1:B:279:GLU:H	2.23	0.49
2:A:501:Z48:C20	2:A:501:Z48:H1	2.42	0.49
1:A:96:ARG:NH2	3:A:421:HOH:O	2.14	0.49
1:A:352:ASN:OD1	1:A:354:ARG:HG3	2.13	0.48
1:B:351:PRO:HA	3:B:580:HOH:O	2.13	0.48
1:A:52:GLN:HG3	1:A:114:TYR:HE1	1.78	0.48
1:A:240:VAL:HG13	1:A:320:LEU:HD22	1.95	0.48
1:A:59:THR:HA	1:A:72:GLN:O	2.14	0.48
1:A:50:ARG:HG2	1:A:52:GLN:NE2	2.29	0.47
1:B:278:ARG:NH1	1:B:278:ARG:CG	2.73	0.47

Continued on next page...

Continued from previous page...

Atom-1	Atom-2	Interatomic distance (Å)	Clash overlap (Å)
1:A:294:PRO:HG2	1:A:296:ILE:CD1	2.28	0.47
1:B:120:GLY:HA3	1:B:127:TYR:CE2	2.50	0.47
1:B:59:THR:HA	1:B:72:GLN:O	2.14	0.47
1:B:229:PHE:HB3	1:B:286:PRO:HB3	1.97	0.47
1:A:25:SER:HA	3:A:441:HOH:O	2.14	0.47
1:A:30:ARG:HA	1:A:35:SER:O	2.15	0.47
1:B:220:ARG:O	1:B:221:TYR:HB2	2.15	0.47
1:B:376:ILE:HD12	3:B:509:HOH:O	2.14	0.46
1:B:218:CYS:HB3	1:B:223:ARG:HD2	1.98	0.46
1:B:240:VAL:HG13	1:B:320:LEU:HD22	1.98	0.46
1:B:275:THR:HG23	1:B:276:PRO:HD2	1.98	0.46
1:B:323:TYR:O	1:B:325:PRO:HD3	2.16	0.45
1:A:189:LEU:O	1:A:189:LEU:HD12	2.17	0.45
1:B:271:LYS:NZ	3:B:536:HOH:O	2.50	0.45
1:A:229:PHE:HB3	1:A:286:PRO:HB3	1.98	0.45
1:A:323:TYR:O	1:A:325:PRO:HD3	2.17	0.45
1:B:133:ASP:OD1	3:B:2:HOH:O	2.21	0.44
1:B:164:GLN:HE22	1:B:195:VAL:HA	1.82	0.44
1:B:89:GLN:HE22	1:B:95:ASN:CB	2.06	0.44
1:A:66:SER:O	1:A:67:PHE:HB2	2.19	0.43
1:B:144:ARG:HD3	3:B:572:HOH:O	2.18	0.43
1:A:281:ILE:O	1:A:286:PRO:HD3	2.19	0.42
1:B:100:ILE:O	1:B:104:LEU:HG	2.19	0.42
1:A:294:PRO:C	1:A:296:ILE:HD12	2.40	0.42
1:B:278:ARG:HG2	1:B:278:ARG:NH1	2.24	0.42
1:B:155:VAL:HG12	1:B:159:LYS:HE3	2.01	0.42
1:B:302:THR:HG23	3:B:604:HOH:O	2.18	0.42
1:A:100:ILE:O	1:A:104:LEU:HG	2.20	0.42
1:B:281:ILE:O	1:B:286:PRO:HD3	2.20	0.41
1:B:190:ASP:HA	1:B:191:PRO:HD2	1.89	0.41
1:B:275:THR:CG2	1:B:276:PRO:HD2	2.51	0.41
1:A:26:MET:CB	1:A:40:VAL:HG12	2.47	0.41
1:A:60:LYS:HB3	1:A:60:LYS:HE2	1.86	0.41
1:A:371:PRO:CB	1:A:372:PRO:HD3	2.46	0.41
1:B:47:GLY:HA3	1:B:48:PRO:HD3	1.89	0.41
1:A:148:ARG:HD2	3:A:491:HOH:O	2.19	0.40
1:B:162:MET:HE1	1:B:243:ALA:O	2.21	0.40
1:B:319:ARG:HB3	1:B:329:LEU:HG	2.03	0.40

There are no symmetry-related clashes.

5.3 Torsion angles

5.3.1 Protein backbone

In the following table, the Percentiles column shows the percent Ramachandran outliers of the chain as a percentile score with respect to all X-ray entries followed by that with respect to entries of similar resolution.

The Analysed column shows the number of residues for which the backbone conformation was analysed, and the total number of residues.

Mol	Chain	Analysed	Favoured	Allowed	Outliers	Percentiles	
1	A	355/414 (86%)	340 (96%)	15 (4%)	0	100	100
1	B	345/414 (83%)	333 (96%)	12 (4%)	0	100	100
All	All	700/828 (84%)	673 (96%)	27 (4%)	0	100	100

There are no Ramachandran outliers to report.

5.3.2 Protein sidechains

In the following table, the Percentiles column shows the percent sidechain outliers of the chain as a percentile score with respect to all X-ray entries followed by that with respect to entries of similar resolution.

The Analysed column shows the number of residues for which the sidechain conformation was analysed, and the total number of residues.

Mol	Chain	Analysed	Rotameric	Outliers	Percentiles	
1	A	306/359 (85%)	295 (96%)	11 (4%)	42	57
1	B	297/359 (83%)	279 (94%)	18 (6%)	23	30
All	All	603/718 (84%)	574 (95%)	29 (5%)	31	42

All (29) residues with a non-rotameric sidechain are listed below:

Mol	Chain	Res	Type
1	A	26	MET
1	A	46	GLN
1	A	60	LYS
1	A	93	PHE
1	A	150	LYS
1	A	151	GLN
1	A	209	ARG
1	A	292	LYS

Continued on next page...

Continued from previous page...

Mol	Chain	Res	Type
1	A	348	VAL
1	A	350	LEU
1	A	352	ASN
1	B	46	GLN
1	B	48	PRO
1	B	49	ASP
1	B	60	LYS
1	B	77	ASP
1	B	93	PHE
1	B	94	LYS
1	B	99	GLN
1	B	148	ARG
1	B	151	GLN
1	B	152	THR
1	B	277	THR
1	B	278	ARG
1	B	283	GLU
1	B	292	LYS
1	B	303	LYS
1	B	322	GLU
1	B	350	LEU

Some sidechains can be flipped to improve hydrogen bonding and reduce clashes. All (5) such sidechains are listed below:

Mol	Chain	Res	Type
1	A	145	HIS
1	A	381	HIS
1	B	46	GLN
1	B	164	GLN
1	B	381	HIS

5.3.3 RNA ⓘ

There are no RNA molecules in this entry.

5.4 Non-standard residues in protein, DNA, RNA chains ⓘ

There are no non-standard protein/DNA/RNA residues in this entry.

5.5 Carbohydrates [i](#)

There are no carbohydrates in this entry.

5.6 Ligand geometry [i](#)

2 ligands are modelled in this entry.

In the following table, the Counts columns list the number of bonds (or angles) for which Mogul statistics could be retrieved, the number of bonds (or angles) that are observed in the model and the number of bonds (or angles) that are defined in the chemical component dictionary. The Link column lists molecule types, if any, to which the group is linked. The Z score for a bond length (or angle) is the number of standard deviations the observed value is removed from the expected value. A bond length (or angle) with $|Z| > 2$ is considered an outlier worth inspection. RMSZ is the root-mean-square of all Z scores of the bond lengths (or angles).

Mol	Type	Chain	Res	Link	Bond lengths			Bond angles		
					Counts	RMSZ	$\# Z > 2$	Counts	RMSZ	$\# Z > 2$
2	Z48	A	501	-	32,34,34	1.81	10 (31%)	35,46,46	2.50	11 (31%)
2	Z48	B	501	-	32,34,34	1.74	6 (18%)	35,46,46	2.30	9 (25%)

In the following table, the Chirals column lists the number of chiral outliers, the number of chiral centers analysed, the number of these observed in the model and the number defined in the chemical component dictionary. Similar counts are reported in the Torsion and Rings columns. '-' means no outliers of that kind were identified.

Mol	Type	Chain	Res	Link	Chirals	Torsions	Rings
2	Z48	A	501	-	-	0/15/22/22	0/4/4/4
2	Z48	B	501	-	-	0/15/22/22	0/4/4/4

All (16) bond length outliers are listed below:

Mol	Chain	Res	Type	Atoms	Z	Observed(Å)	Ideal(Å)
2	A	501	Z48	C5-N4	-3.73	1.29	1.34
2	A	501	Z48	C16-N17	-3.68	1.30	1.36
2	B	501	Z48	C16-N17	-3.61	1.30	1.36
2	B	501	Z48	C5-N4	-3.55	1.29	1.34
2	A	501	Z48	C14-N13	-3.07	1.29	1.34
2	B	501	Z48	O22-C21	-2.98	1.17	1.23
2	A	501	Z48	C15-C14	-2.89	1.45	1.49
2	A	501	Z48	C20-C19	-2.79	1.34	1.40
2	B	501	Z48	C14-N13	-2.77	1.30	1.34
2	B	501	Z48	C3-N4	-2.68	1.28	1.34
2	A	501	Z48	O22-C21	-2.58	1.18	1.23

Continued on next page...

Continued from previous page...

Mol	Chain	Res	Type	Atoms	Z	Observed(Å)	Ideal(Å)
2	B	501	Z48	C20-C19	-2.40	1.35	1.40
2	A	501	Z48	C33-C28	-2.37	1.35	1.39
2	A	501	Z48	C3-N4	-2.36	1.29	1.34
2	A	501	Z48	C28-C24	-2.21	1.48	1.52
2	A	501	Z48	C3-C2	-2.08	1.35	1.39

All (20) bond angle outliers are listed below:

Mol	Chain	Res	Type	Atoms	Z	Observed(°)	Ideal(°)
2	A	501	Z48	C2-C3-N4	-6.85	119.12	125.23
2	B	501	Z48	C2-C3-N4	-6.57	119.37	125.23
2	A	501	Z48	N4-C5-N13	-5.54	120.77	126.67
2	B	501	Z48	N4-C5-N13	-4.76	121.60	126.67
2	A	501	Z48	C16-C15-C14	-4.32	119.94	127.86
2	A	501	Z48	C26-C24-N23	-3.90	103.96	109.35
2	B	501	Z48	C26-C24-N23	-3.41	104.64	109.35
2	A	501	Z48	O27-C26-C24	-2.58	106.52	111.61
2	B	501	Z48	C1-C2-C3	-2.50	116.80	120.65
2	B	501	Z48	C16-C15-C14	-2.24	123.76	127.86
2	A	501	Z48	O22-C21-N23	-2.15	118.56	122.44
2	A	501	Z48	C26-C24-C28	-2.03	106.11	110.92
2	B	501	Z48	C15-C14-N13	2.03	117.96	115.17
2	A	501	Z48	N6-C5-N13	2.35	124.08	116.91
2	B	501	Z48	C3-N4-C5	2.56	120.84	115.95
2	B	501	Z48	C15-C14-C2	2.60	126.06	123.12
2	A	501	Z48	C3-N4-C5	3.55	122.74	115.95
2	A	501	Z48	C15-C14-C2	4.02	127.66	123.12
2	A	501	Z48	C14-N13-C5	4.99	120.88	116.66
2	B	501	Z48	C14-N13-C5	7.37	122.88	116.66

There are no chirality outliers.

There are no torsion outliers.

There are no ring outliers.

2 monomers are involved in 4 short contacts:

Mol	Chain	Res	Type	Clashes	Symm-Clashes
2	A	501	Z48	2	0
2	B	501	Z48	2	0

5.7 Other polymers

There are no such residues in this entry.

5.8 Polymer linkage issues

There are no chain breaks in this entry.

6 Fit of model and data ⓘ

6.1 Protein, DNA and RNA chains ⓘ

In the following table, the column labelled ‘#RSRZ> 2’ contains the number (and percentage) of RSRZ outliers, followed by percent RSRZ outliers for the chain as percentile scores relative to all X-ray entries and entries of similar resolution. The OWAB column contains the minimum, median, 95th percentile and maximum values of the occupancy-weighted average B-factor per residue. The column labelled ‘Q< 0.9’ lists the number of (and percentage) of residues with an average occupancy less than 0.9.

Mol	Chain	Analysed	<RSRZ>	#RSRZ>2	OWAB(Å ²)	Q<0.9
1	A	359/414 (86%)	-0.13	16 (4%) 37 46	18, 33, 62, 99	0
1	B	347/414 (83%)	-0.23	9 (2%) 59 68	18, 31, 61, 81	0
All	All	706/828 (85%)	-0.18	25 (3%) 48 56	18, 32, 62, 99	0

All (25) RSRZ outliers are listed below:

Mol	Chain	Res	Type	RSRZ
1	B	120	GLY	4.7
1	A	385	GLN	4.6
1	B	93	PHE	3.9
1	A	33	ASP	3.8
1	B	48	PRO	3.7
1	B	148	ARG	3.6
1	A	120	GLY	3.5
1	A	34	GLY	3.4
1	A	124	ASP	2.9
1	A	299	HIS	2.9
1	A	291	PHE	2.8
1	A	35	SER	2.8
1	A	148	ARG	2.7
1	B	47	GLY	2.6
1	A	122	LYS	2.6
1	B	92	ARG	2.6
1	B	121	GLU	2.5
1	A	150	LYS	2.5
1	A	123	LYS	2.4
1	A	93	PHE	2.4
1	B	122	LYS	2.4
1	B	124	ASP	2.3
1	A	300	PRO	2.2
1	A	121	GLU	2.0

Continued on next page...

Continued from previous page...

Mol	Chain	Res	Type	RSRZ
1	A	30	ARG	2.0

6.2 Non-standard residues in protein, DNA, RNA chains [i](#)

There are no non-standard protein/DNA/RNA residues in this entry.

6.3 Carbohydrates [i](#)

There are no carbohydrates in this entry.

6.4 Ligands [i](#)

In the following table, the Atoms column lists the number of modelled atoms in the group and the number defined in the chemical component dictionary. LLDF column lists the quality of electron density of the group with respect to its neighbouring residues in protein, DNA or RNA chains. The B-factors column lists the minimum, median, 95th percentile and maximum values of B factors of atoms in the group. The column labelled 'Q< 0.9' lists the number of atoms with occupancy less than 0.9.

Mol	Type	Chain	Res	Atoms	RSCC	RSR	LLDF	B-factors(\AA^2)	Q<0.9
2	Z48	A	501	31/31	0.96	0.09	-0.44	18,23,27,29	0
2	Z48	B	501	31/31	0.96	0.10	-0.47	16,24,32,33	0

6.5 Other polymers [i](#)

There are no such residues in this entry.