



Full wwPDB X-ray Structure Validation Report ⓘ

Aug 9, 2016 – 03:06 PM EDT

PDB ID : 5I4O
Title : Crystal structure of the catalytic domain of MMP-12 in complex with a selective sugar-conjugated triazole-linked carboxylate zinc-chelator water-soluble inhibitor (DC28).
Authors : Stura, E.A.; Rosalia, L.; Cuffaro, D.; Tepshi, L.; Ciccone, L.; Rossello, A.
Deposited on : 2016-02-12
Resolution : 2.05 Å(reported)

This is a Full wwPDB X-ray Structure Validation Report for a publicly released PDB entry.

We welcome your comments at validation@mail.wwpdb.org

A user guide is available at

<http://wwpdb.org/validation/2016/XrayValidationReportHelp>

with specific help available everywhere you see the ⓘ symbol.

The following versions of software and data (see [references ⓘ](#)) were used in the production of this report:

MolProbity : 4.02b-467
Mogul : 1.7.1 (RC1), CSD as537be (2016)
Xtriage (Phenix) : 1.9-1692
EDS : rb-20027939
Percentile statistics : 20151230.v01 (using entries in the PDB archive December 30th 2015)
Refmac : 5.8.0135
CCP4 : 6.5.0
Ideal geometry (proteins) : Engh & Huber (2001)
Ideal geometry (DNA, RNA) : Parkinson et al. (1996)
Validation Pipeline (wwPDB-VP) : rb-20027939

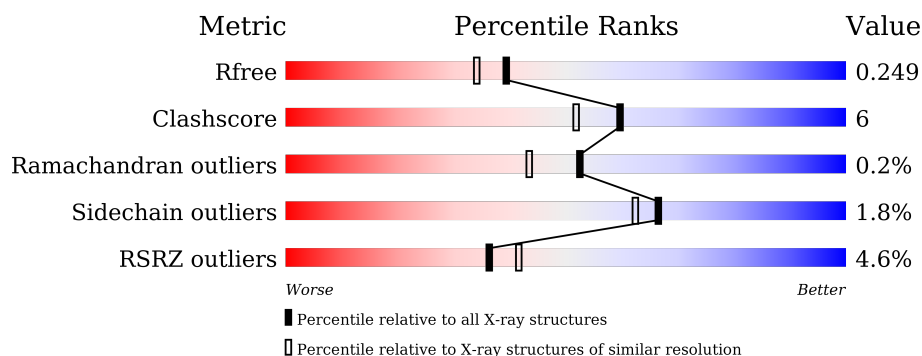
1 Overall quality at a glance

The following experimental techniques were used to determine the structure:

X-RAY DIFFRACTION

The reported resolution of this entry is 2.05 Å.

Percentile scores (ranging between 0-100) for global validation metrics of the entry are shown in the following graphic. The table shows the number of entries on which the scores are based.



Metric	Whole archive (#Entries)	Similar resolution (#Entries, resolution range(Å))
R_{free}	91344	1192 (2.04-2.04)
Clashscore	102246	1269 (2.04-2.04)
Ramachandran outliers	100387	1258 (2.04-2.04)
Sidechain outliers	100360	1258 (2.04-2.04)
RSRZ outliers	91569	1194 (2.04-2.04)

The table below summarises the geometric issues observed across the polymeric chains and their fit to the electron density. The red, orange, yellow and green segments on the lower bar indicate the fraction of residues that contain outliers for ≥ 3 , 2, 1 and 0 types of geometric quality criteria. A grey segment represents the fraction of residues that are not modelled. The numeric value for each fraction is indicated below the corresponding segment, with a dot representing fractions $\leq 5\%$. The upper red bar (where present) indicates the fraction of residues that have poor fit to the electron density. The numeric value is given above the bar.

Mol	Chain	Length	Quality of chain
1	A	159	<div> <div>2%</div> <div>94%</div> <div>••</div> </div>
1	B	159	<div> <div>8%</div> <div>81%</div> <div>16%</div> <div>••</div> </div>
1	C	159	<div> <div>%</div> <div>90%</div> <div>8%</div> <div>•</div> </div>
1	D	159	<div> <div>8%</div> <div>75%</div> <div>21%</div> <div>••</div> </div>

The following table lists non-polymeric compounds, carbohydrate monomers and non-standard residues in protein, DNA, RNA chains that are outliers for geometric or electron-density-fit crite-

ria:

Mol	Type	Chain	Res	Chirality	Geometry	Clashes	Electron density
2	V28	B	301	-	-	-	X
2	V28	C	301	-	-	-	X

2 Entry composition

There are 5 unique types of molecules in this entry. The entry contains 5591 atoms, of which 0 are hydrogens and 0 are deuteriums.

In the tables below, the ZeroOcc column contains the number of atoms modelled with zero occupancy, the AltConf column contains the number of residues with at least one atom in alternate conformation and the Trace column contains the number of residues modelled with at most 2 atoms.

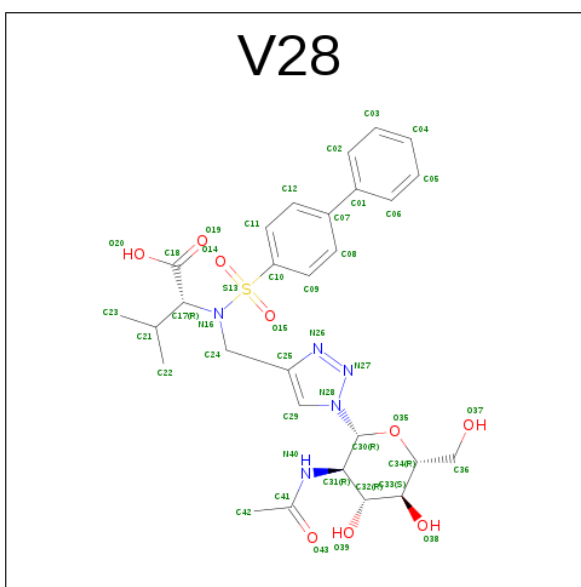
- Molecule 1 is a protein called Macrophage metalloelastase.

Mol	Chain	Residues	Atoms					ZeroOcc	AltConf	Trace
1	A	156	Total	C	N	O	S	0	0	0
			1227	782	215	227	3			
1	B	156	Total	C	N	O	S	0	0	0
			1227	782	215	227	3			
1	C	156	Total	C	N	O	S	0	1	0
			1236	787	216	230	3			
1	D	156	Total	C	N	O	S	0	1	0
			1236	788	217	228	3			

There are 12 discrepancies between the modelled and reference sequences:

Chain	Residue	Modelled	Actual	Comment	Reference
A	105	MET	-	initiating methionine	UNP P39900
A	171	ASP	PHE	conflict	UNP P39900
A	219	GLN	GLU	conflict	UNP P39900
B	105	MET	-	initiating methionine	UNP P39900
B	171	ASP	PHE	conflict	UNP P39900
B	219	GLN	GLU	conflict	UNP P39900
C	105	MET	-	initiating methionine	UNP P39900
C	171	ASP	PHE	conflict	UNP P39900
C	219	GLN	GLU	conflict	UNP P39900
D	105	MET	-	initiating methionine	UNP P39900
D	171	ASP	PHE	conflict	UNP P39900
D	219	GLN	GLU	conflict	UNP P39900

- Molecule 2 is N-({1-[2-(acetylamino)-2-deoxy-beta-D-glucopyranosyl]-1H-1,2,3-triazol-4-yl)methyl)-N-([(1,1'-biphenyl]-4-yl)sulfonyl]-D-valine (three-letter code: V28) (formula: C₂₈H₃₅N₅O₉S).



Mol	Chain	Residues	Atoms					ZeroOcc	AltConf
2	A	1	Total	C	N	O	S	0	0
			43	28	5	9	1		
2	B	1	Total	C	N	O	S	0	0
			43	28	5	9	1		
2	C	1	Total	C	N	O	S	0	0
			43	28	5	9	1		
2	D	1	Total	C	N	O	S	0	0
			43	28	5	9	1		

- Molecule 3 is ZINC ION (three-letter code: ZN) (formula: Zn).

Mol	Chain	Residues	Atoms		ZeroOcc	AltConf
3	B	2	Total	Zn	0	0
			2	2		
3	A	2	Total	Zn	0	0
			2	2		
3	D	2	Total	Zn	0	0
			2	2		
3	C	2	Total	Zn	0	0
			2	2		

- Molecule 4 is CALCIUM ION (three-letter code: CA) (formula: Ca).

Mol	Chain	Residues	Atoms		ZeroOcc	AltConf
4	B	3	Total	Ca	0	0
			3	3		

Continued on next page...

Continued from previous page...

Mol	Chain	Residues	Atoms		ZeroOcc	AltConf
4	A	3	Total 3	Ca 3	0	0
4	D	3	Total 3	Ca 3	0	0
4	C	3	Total 3	Ca 3	0	0

- Molecule 5 is water.

Mol	Chain	Residues	Atoms		ZeroOcc	AltConf
5	A	139	Total 139	O 139	0	0
5	B	100	Total 102	O 102	0	2
5	C	133	Total 135	O 135	0	2
5	D	94	Total 97	O 97	0	3

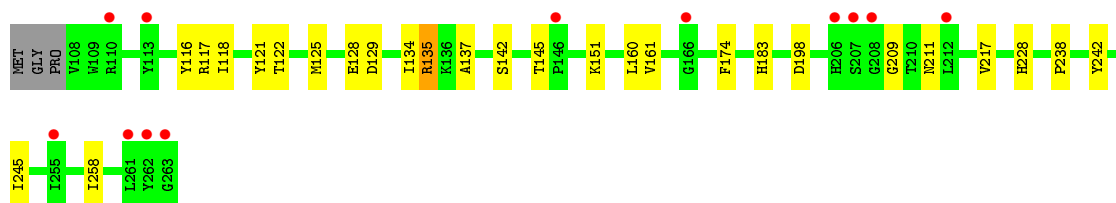
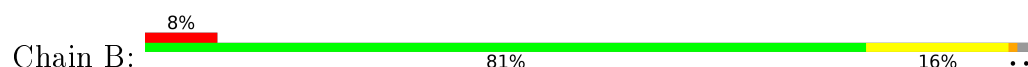
3 Residue-property plots [i](#)

These plots are drawn for all protein, RNA and DNA chains in the entry. The first graphic for a chain summarises the proportions of errors displayed in the second graphic. The second graphic shows the sequence view annotated by issues in geometry and electron density. Residues are color-coded according to the number of geometric quality criteria for which they contain at least one outlier: green = 0, yellow = 1, orange = 2 and red = 3 or more. A red dot above a residue indicates a poor fit to the electron density ($RSRZ > 2$). Stretches of 2 or more consecutive residues without any outlier are shown as a green connector. Residues present in the sample, but not in the model, are shown in grey.

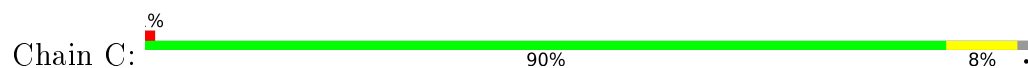
- Molecule 1: Macrophage metalloelastase



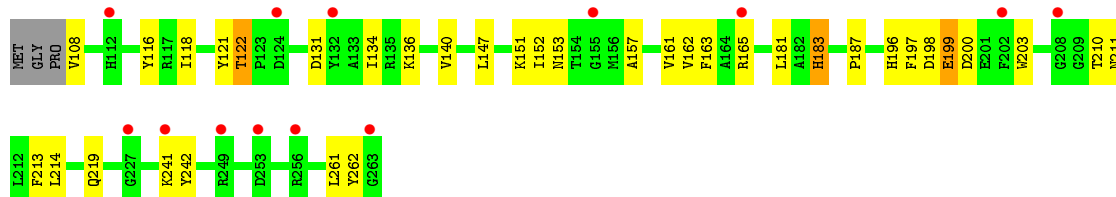
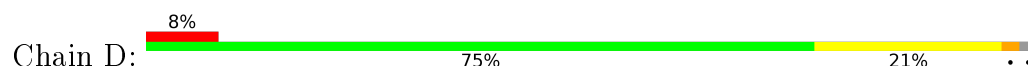
- Molecule 1: Macrophage metalloelastase



- Molecule 1: Macrophage metalloelastase



- Molecule 1: Macrophage metalloelastase



4 Data and refinement statistics

Property	Value	Source
Space group	P 1 21 1	Depositor
Cell constants a, b, c, α , β , γ	63.98Å 63.51Å 78.64Å 90.00° 102.31° 90.00°	Depositor
Resolution (Å)	32.87 – 2.05 32.87 – 2.05	Depositor EDS
% Data completeness (in resolution range)	98.6 (32.87-2.05) 98.6 (32.87-2.05)	Depositor EDS
R_{merge}	0.23	Depositor
R_{sym}	0.21	Depositor
$\langle I/\sigma(I) \rangle$ ¹	1.96 (at 2.05Å)	Xtriage
Refinement program	REFMAC 5.8.0135	Depositor
R, R_{free}	0.210 , 0.249 0.211 , 0.249	Depositor DCC
R_{free} test set	1917 reflections (5.26%)	DCC
Wilson B-factor (Å ²)	18.4	Xtriage
Anisotropy	0.072	Xtriage
Bulk solvent k_{sol} (e/Å ³), B_{sol} (Å ²)	0.36 , 73.2	EDS
L-test for twinning ²	$\langle L \rangle = 0.50$, $\langle L^2 \rangle = 0.33$	Xtriage
Estimated twinning fraction	No twinning to report.	Xtriage
F_o, F_c correlation	0.93	EDS
Total number of atoms	5591	wwPDB-VP
Average B, all atoms (Å ²)	30.0	wwPDB-VP

Xtriage's analysis on translational NCS is as follows: *The analyses of the Patterson function reveals a significant off-origin peak that is 41.65 % of the origin peak, indicating pseudo translational symmetry. The chance of finding a peak of this or larger height randomly in a structure without pseudo translational symmetry is equal to 2.2901e-04. The detected translational NCS is most likely also responsible for the elevated intensity ratio.*

¹ Intensities estimated from amplitudes.

² Theoretical values of $\langle |L| \rangle$, $\langle L^2 \rangle$ for acentric reflections are 0.5, 0.333 respectively for untwinned datasets, and 0.375, 0.2 for perfectly twinned datasets.

5 Model quality [i](#)

5.1 Standard geometry [i](#)

Bond lengths and bond angles in the following residue types are not validated in this section: ZN, V28, CA

The Z score for a bond length (or angle) is the number of standard deviations the observed value is removed from the expected value. A bond length (or angle) with $|Z| > 5$ is considered an outlier worth inspection. RMSZ is the root-mean-square of all Z scores of the bond lengths (or angles).

Mol	Chain	Bond lengths		Bond angles	
		RMSZ	$\# Z > 5$	RMSZ	$\# Z > 5$
1	A	1.25	1/1263 (0.1%)	0.95	1/1711 (0.1%)
1	B	0.83	0/1263	0.91	1/1711 (0.1%)
1	C	1.20	2/1272 (0.2%)	0.93	0/1723
1	D	0.78	0/1272	0.88	1/1722 (0.1%)
All	All	1.04	3/5070 (0.1%)	0.92	3/6867 (0.0%)

All (3) bond length outliers are listed below:

Mol	Chain	Res	Type	Atoms	Z	Observed(Å)	Ideal(Å)
1	A	121	TYR	CE1-CZ	5.97	1.46	1.38
1	C	242	TYR	CE1-CZ	5.79	1.46	1.38
1	C	194	ASP	CB-CG	5.13	1.62	1.51

All (3) bond angle outliers are listed below:

Mol	Chain	Res	Type	Atoms	Z	Observed(°)	Ideal(°)
1	D	198	ASP	CB-CG-OD1	6.31	123.97	118.30
1	B	135	ARG	NE-CZ-NH2	5.24	122.92	120.30
1	A	124	ASP	CB-CG-OD1	5.05	122.85	118.30

There are no chirality outliers.

There are no planarity outliers.

5.2 Too-close contacts [i](#)

In the following table, the Non-H and H(model) columns list the number of non-hydrogen atoms and hydrogen atoms in the chain respectively. The H(added) column lists the number of hydrogen atoms added and optimized by MolProbity. The Clashes column lists the number of clashes within the asymmetric unit, whereas Symm-Clashes lists symmetry related clashes.

Mol	Chain	Non-H	H(model)	H(added)	Clashes	Symm-Clashes
1	A	1227	0	1159	2	0
1	B	1227	0	1159	22	0
1	C	1236	0	1164	7	0
1	D	1236	0	1171	24	0
2	A	43	0	0	0	0
2	B	43	0	0	0	0
2	C	43	0	0	0	0
2	D	43	0	0	1	0
3	A	2	0	0	0	0
3	B	2	0	0	0	0
3	C	2	0	0	0	0
3	D	2	0	0	0	0
4	A	3	0	0	0	0
4	B	3	0	0	0	0
4	C	3	0	0	0	0
4	D	3	0	0	0	0
5	A	139	0	0	1	0
5	B	102	0	0	5	0
5	C	135	0	0	2	0
5	D	97	0	0	4	0
All	All	5591	0	4653	56	0

The all-atom clashscore is defined as the number of clashes found per 1000 atoms (including hydrogen atoms). The all-atom clashscore for this structure is 6.

All (56) close contacts within the same asymmetric unit are listed below, sorted by their clash magnitude.

Atom-1	Atom-2	Interatomic distance (Å)	Clash overlap (Å)
1:B:118:ILE:HD12	1:B:151:LYS:HZ1	1.35	0.89
1:B:211:ASN:HD22	1:B:242:TYR:HE1	1.26	0.79
1:B:118:ILE:HD12	1:B:151:LYS:NZ	1.99	0.77
1:C:108:VAL:N	5:C:645[B]:HOH:O	2.20	0.73
1:B:211:ASN:ND2	1:B:242:TYR:HE1	1.88	0.71
1:D:200:ASP:O	5:D:601:HOH:O	2.12	0.68
1:B:211:ASN:HA	5:B:608:HOH:O	1.94	0.67
1:D:165:ARG:HD3	1:D:200:ASP:OD1	1.95	0.66
1:B:128:GLU:OE1	5:B:601:HOH:O	2.13	0.66
1:D:122:THR:HB	1:D:199:GLU:OE1	1.96	0.65
1:A:108:VAL:N	5:A:601:HOH:O	2.30	0.63
1:B:134:ILE:HD13	1:B:161:VAL:HG11	1.86	0.57
1:D:161:VAL:HG13	1:D:197:PHE:HE1	1.70	0.56
1:D:136:LYS:O	1:D:140:VAL:HG23	2.06	0.56

Continued on next page...

Continued from previous page...

Atom-1	Atom-2	Interatomic distance (Å)	Clash overlap (Å)
1:D:116:TYR:HE1	5:D:650:HOH:O	1.89	0.55
1:D:211:ASN:ND2	1:D:242:TYR:HE1	2.05	0.55
1:B:211:ASN:ND2	1:B:245:ILE:HD11	2.22	0.55
1:D:211:ASN:ND2	1:D:242:TYR:CE1	2.75	0.55
1:D:151:LYS:NZ	1:D:153:ASN:OD1	2.40	0.55
1:D:108:VAL:HA	1:D:187:PRO:HG2	1.88	0.54
1:B:228:HIS:CE1	1:B:238:PRO:HB3	2.43	0.53
1:D:121:TYR:OH	1:D:131:ASP:OD1	2.27	0.51
1:D:118:ILE:HD11	5:D:650:HOH:O	2.10	0.51
1:B:135:ARG:NH1	5:B:602:HOH:O	2.31	0.50
1:B:211:ASN:ND2	1:B:242:TYR:CE1	2.76	0.50
1:B:125:MET:HE3	1:B:129:ASP:HB3	1.94	0.49
1:C:112:HIS:CE1	1:C:146:PRO:HG2	2.48	0.49
1:B:116:TYR:HE2	5:B:615[B]:HOH:O	1.96	0.48
1:D:213:PHE:CD2	1:D:214:LEU:HD23	2.49	0.48
1:C:177:LYS:NZ	5:C:604:HOH:O	2.48	0.46
1:D:161:VAL:HG13	1:D:197:PHE:CE1	2.48	0.46
2:D:301:V28:C24	2:D:301:V28:C23	2.94	0.46
1:C:128[B]:GLU:HG3	1:C:129:ASP:N	2.30	0.46
1:D:152:ILE:HD11	1:D:157:ALA:HB2	1.97	0.46
1:B:117:ARG:O	1:B:160:LEU:HD12	2.16	0.46
1:A:110:ARG:HB2	1:A:110:ARG:HE	1.55	0.45
1:B:118:ILE:HD11	1:B:134:ILE:HD12	1.98	0.45
1:B:121:TYR:N	1:B:121:TYR:CD1	2.85	0.45
1:B:134:ILE:HB	5:B:615[B]:HOH:O	2.18	0.44
1:D:163:PHE:HB3	1:D:199:GLU:HG2	1.99	0.44
1:D:162:VAL:HB	1:D:196:HIS:CD2	2.53	0.43
1:B:134:ILE:O	1:B:137:ALA:HB3	2.19	0.43
1:D:147:LEU:HD21	1:D:262:TYR:CD1	2.54	0.42
1:C:151:LYS:NZ	1:C:153:ASN:OD1	2.53	0.42
1:D:181:LEU:HD13	1:D:210:THR:HG21	2.01	0.42
1:C:170:ASP:O	1:C:171:ASP:HB2	2.20	0.42
1:D:108:VAL:HG11	1:D:261:LEU:HB3	2.02	0.41
1:B:211:ASN:HD21	1:B:245:ILE:HD11	1.85	0.41
1:B:137:ALA:HA	1:B:217:VAL:HG22	2.02	0.41
1:B:174:PHE:CG	1:B:198:ASP:HB2	2.55	0.41
1:B:145:THR:HG21	1:B:258:ILE:HG13	2.02	0.41
1:D:134:ILE:HB	5:D:650:HOH:O	2.20	0.41
1:C:116:TYR:CZ	1:C:151:LYS:HB2	2.56	0.41
1:D:122:THR:CB	1:D:199:GLU:OE1	2.67	0.41
1:D:197:PHE:HB3	1:D:203:TRP:CZ2	2.56	0.41

Continued on next page...

Continued from previous page...

Atom-1	Atom-2	Interatomic distance (Å)	Clash overlap (Å)
1:D:183:HIS:HA	1:D:219:GLN:OE1	2.21	0.41

There are no symmetry-related clashes.

5.3 Torsion angles [i](#)

5.3.1 Protein backbone [i](#)

In the following table, the Percentiles column shows the percent Ramachandran outliers of the chain as a percentile score with respect to all X-ray entries followed by that with respect to entries of similar resolution.

The Analysed column shows the number of residues for which the backbone conformation was analysed, and the total number of residues.

Mol	Chain	Analysed	Favoured	Allowed	Outliers	Percentiles	
1	A	154/159 (97%)	149 (97%)	5 (3%)	0	100	100
1	B	154/159 (97%)	142 (92%)	11 (7%)	1 (1%)	30	18
1	C	155/159 (98%)	150 (97%)	5 (3%)	0	100	100
1	D	155/159 (98%)	145 (94%)	10 (6%)	0	100	100
All	All	618/636 (97%)	586 (95%)	31 (5%)	1 (0%)	52	43

All (1) Ramachandran outliers are listed below:

Mol	Chain	Res	Type
1	B	209	GLY

5.3.2 Protein sidechains [i](#)

In the following table, the Percentiles column shows the percent sidechain outliers of the chain as a percentile score with respect to all X-ray entries followed by that with respect to entries of similar resolution.

The Analysed column shows the number of residues for which the sidechain conformation was analysed, and the total number of residues.

Mol	Chain	Analysed	Rotameric	Outliers	Percentiles	
1	A	126/128 (98%)	124 (98%)	2 (2%)	70	67

Continued on next page...

Continued from previous page...

Mol	Chain	Analysed	Rotameric	Outliers	Percentiles	
1	B	126/128 (98%)	123 (98%)	3 (2%)	57	50
1	C	127/128 (99%)	127 (100%)	0	100	100
1	D	127/128 (99%)	122 (96%)	5 (4%)	39	30
All	All	506/512 (99%)	496 (98%)	10 (2%)	66	58

All (10) residues with a non-rotameric sidechain are listed below:

Mol	Chain	Res	Type
1	A	113	TYR
1	A	241	LYS
1	B	122	THR
1	B	142	SER
1	B	183	HIS
1	D	122	THR
1	D	183	HIS
1	D	199	GLU
1	D	241[A]	LYS
1	D	241[B]	LYS

Some sidechains can be flipped to improve hydrogen bonding and reduce clashes. All (1) such sidechains are listed below:

Mol	Chain	Res	Type
1	D	143	ASN

5.3.3 RNA ⓘ

There are no RNA molecules in this entry.

5.4 Non-standard residues in protein, DNA, RNA chains ⓘ

There are no non-standard protein/DNA/RNA residues in this entry.

5.5 Carbohydrates ⓘ

There are no carbohydrates in this entry.

5.6 Ligand geometry

Of 24 ligands modelled in this entry, 20 are monoatomic - leaving 4 for Mogul analysis.

In the following table, the Counts columns list the number of bonds (or angles) for which Mogul statistics could be retrieved, the number of bonds (or angles) that are observed in the model and the number of bonds (or angles) that are defined in the chemical component dictionary. The Link column lists molecule types, if any, to which the group is linked. The Z score for a bond length (or angle) is the number of standard deviations the observed value is removed from the expected value. A bond length (or angle) with $|Z| > 2$ is considered an outlier worth inspection. RMSZ is the root-mean-square of all Z scores of the bond lengths (or angles).

Mol	Type	Chain	Res	Link	Bond lengths			Bond angles		
					Counts	RMSZ	# $ Z > 2$	Counts	RMSZ	# $ Z > 2$
2	V28	A	301	3	39,46,46	2.28	6 (15%)	51,67,67	1.78	10 (19%)
2	V28	B	301	3	39,46,46	2.54	5 (12%)	51,67,67	1.90	11 (21%)
2	V28	C	301	3	39,46,46	2.35	6 (15%)	51,67,67	2.12	14 (27%)
2	V28	D	301	3	39,46,46	2.45	6 (15%)	51,67,67	1.98	9 (17%)

In the following table, the Chirals column lists the number of chiral outliers, the number of chiral centers analysed, the number of these observed in the model and the number defined in the chemical component dictionary. Similar counts are reported in the Torsion and Rings columns. '-' means no outliers of that kind were identified.

Mol	Type	Chain	Res	Link	Chirals	Torsions	Rings
2	V28	A	301	3	-	0/33/62/62	0/4/4/4
2	V28	B	301	3	-	0/33/62/62	0/4/4/4
2	V28	C	301	3	-	0/33/62/62	0/4/4/4
2	V28	D	301	3	-	0/33/62/62	0/4/4/4

All (23) bond length outliers are listed below:

Mol	Chain	Res	Type	Atoms	Z	Observed(Å)	Ideal(Å)
2	B	301	V28	C10-S13	-12.08	1.58	1.76
2	D	301	V28	C10-S13	-11.26	1.60	1.76
2	C	301	V28	C10-S13	-10.38	1.61	1.76
2	A	301	V28	C10-S13	-10.17	1.61	1.76
2	D	301	V28	S13-N16	-8.27	1.50	1.63
2	C	301	V28	S13-N16	-8.08	1.50	1.63
2	B	301	V28	S13-N16	-7.76	1.51	1.63
2	A	301	V28	S13-N16	-7.63	1.51	1.63
2	A	301	V28	O15-S13	-2.69	1.40	1.43
2	B	301	V28	C29-N28	-2.65	1.32	1.35
2	D	301	V28	C29-N28	-2.62	1.33	1.35

Continued on next page...

Continued from previous page...

Mol	Chain	Res	Type	Atoms	Z	Observed(Å)	Ideal(Å)
2	C	301	V28	O14-S13	-2.57	1.40	1.43
2	A	301	V28	C29-N28	-2.42	1.33	1.35
2	D	301	V28	C24-N16	-2.41	1.44	1.48
2	C	301	V28	C29-N28	-2.24	1.33	1.35
2	D	301	V28	N27-N28	2.08	1.38	1.34
2	A	301	V28	N27-N28	2.09	1.38	1.34
2	C	301	V28	N27-N28	2.36	1.39	1.34
2	B	301	V28	N27-N28	3.34	1.41	1.34
2	A	301	V28	N26-N27	3.38	1.39	1.34
2	D	301	V28	N26-N27	3.68	1.39	1.34
2	C	301	V28	N26-N27	3.76	1.39	1.34
2	B	301	V28	N26-N27	4.07	1.40	1.34

All (44) bond angle outliers are listed below:

Mol	Chain	Res	Type	Atoms	Z	Observed(°)	Ideal(°)
2	C	301	V28	O14-S13-O15	-6.72	107.95	119.47
2	B	301	V28	O14-S13-O15	-6.22	108.80	119.47
2	D	301	V28	O14-S13-O15	-5.71	109.69	119.47
2	A	301	V28	O14-S13-O15	-5.61	109.86	119.47
2	C	301	V28	C32-C31-N40	-4.09	102.17	110.67
2	B	301	V28	C32-C31-N40	-2.85	104.75	110.67
2	B	301	V28	C30-C31-N40	-2.82	107.25	110.96
2	A	301	V28	C29-C25-N26	-2.62	107.21	111.42
2	C	301	V28	C08-C07-C01	-2.44	117.32	121.40
2	B	301	V28	C08-C07-C01	-2.31	117.54	121.40
2	C	301	V28	C29-C25-N26	-2.30	107.73	111.42
2	C	301	V28	C42-C41-N40	-2.22	111.83	116.10
2	B	301	V28	C09-C10-S13	-2.18	117.49	119.79
2	A	301	V28	O37-C36-C34	-2.17	104.05	111.30
2	D	301	V28	C08-C07-C01	-2.12	117.86	121.40
2	B	301	V28	O15-S13-C10	2.05	110.60	108.01
2	D	301	V28	C32-C33-C34	2.07	113.91	110.23
2	A	301	V28	O35-C30-C31	2.19	113.20	109.52
2	B	301	V28	C11-C10-S13	2.25	122.15	119.79
2	C	301	V28	C31-N40-C41	2.27	129.19	123.21
2	C	301	V28	O15-S13-N16	2.28	111.74	106.97
2	C	301	V28	O35-C34-C33	2.36	114.16	109.67
2	A	301	V28	O15-S13-N16	2.48	112.15	106.97
2	A	301	V28	C09-C10-S13	2.57	122.49	119.79
2	A	301	V28	C24-N16-S13	2.58	121.91	118.07
2	D	301	V28	O14-S13-C10	2.59	111.28	108.01

Continued on next page...

Continued from previous page...

Mol	Chain	Res	Type	Atoms	Z	Observed(°)	Ideal(°)
2	C	301	V28	C24-N16-S13	2.62	121.97	118.07
2	A	301	V28	O15-S13-C10	2.63	111.33	108.01
2	C	301	V28	C11-C10-S13	2.64	122.56	119.79
2	A	301	V28	C34-O35-C30	2.65	113.00	108.62
2	B	301	V28	O14-S13-N16	2.87	112.97	106.97
2	D	301	V28	C11-C10-S13	2.95	122.89	119.79
2	C	301	V28	O14-S13-N16	3.03	113.30	106.97
2	B	301	V28	C24-N16-S13	3.04	122.60	118.07
2	D	301	V28	O35-C30-C31	3.51	115.42	109.52
2	D	301	V28	O15-S13-C10	3.73	112.72	108.01
2	C	301	V28	C30-C31-N40	3.81	115.98	110.96
2	D	301	V28	C33-C32-C31	4.39	117.04	110.37
2	B	301	V28	O35-C30-C31	4.56	117.18	109.52
2	C	301	V28	C25-C24-N16	4.69	120.20	112.56
2	C	301	V28	C34-O35-C30	5.89	118.33	108.62
2	B	301	V28	C34-O35-C30	6.24	118.91	108.62
2	A	301	V28	C25-C24-N16	6.87	123.75	112.56
2	D	301	V28	C34-O35-C30	7.98	121.78	108.62

There are no chirality outliers.

There are no torsion outliers.

There are no ring outliers.

1 monomer is involved in 1 short contact:

Mol	Chain	Res	Type	Clashes	Symm-Clashes
2	D	301	V28	1	0

5.7 Other polymers [i](#)

There are no such residues in this entry.

5.8 Polymer linkage issues [i](#)

There are no chain breaks in this entry.

6 Fit of model and data ⓘ

6.1 Protein, DNA and RNA chains ⓘ

In the following table, the column labelled ‘#RSRZ> 2’ contains the number (and percentage) of RSRZ outliers, followed by percent RSRZ outliers for the chain as percentile scores relative to all X-ray entries and entries of similar resolution. The OWAB column contains the minimum, median, 95th percentile and maximum values of the occupancy-weighted average B-factor per residue. The column labelled ‘Q< 0.9’ lists the number of (and percentage) of residues with an average occupancy less than 0.9.

Mol	Chain	Analysed	<RSRZ>	#RSRZ>2	OWAB(Å ²)	Q<0.9
1	A	156/159 (98%)	-0.12	3 (1%) 70 75	5, 14, 34, 49	0
1	B	156/159 (98%)	0.82	12 (7%) 16 19	25, 37, 56, 71	0
1	C	156/159 (98%)	-0.28	1 (0%) 90 92	5, 15, 33, 61	0
1	D	156/159 (98%)	0.74	13 (8%) 14 16	27, 41, 59, 78	0
All	All	624/636 (98%)	0.29	29 (4%) 36 41	5, 30, 54, 78	0

All (29) RSRZ outliers are listed below:

Mol	Chain	Res	Type	RSRZ
1	D	155	GLY	4.7
1	D	256	ARG	4.5
1	D	263	GLY	4.4
1	B	113	TYR	3.9
1	B	208	GLY	3.7
1	D	241[A]	LYS	3.6
1	A	263	GLY	3.6
1	D	208	GLY	3.2
1	B	262	TYR	3.0
1	B	255	ILE	2.9
1	B	263	GLY	2.9
1	B	212	LEU	2.9
1	D	124	ASP	2.9
1	B	110	ARG	2.8
1	C	208	GLY	2.7
1	D	202	PHE	2.6
1	D	132	TYR	2.6
1	B	207	SER	2.5
1	A	113	TYR	2.4
1	D	112	HIS	2.3
1	D	253	ASP	2.3

Continued on next page...

Continued from previous page...

Mol	Chain	Res	Type	RSRZ
1	B	261	LEU	2.3
1	D	249	ARG	2.2
1	B	166	GLY	2.2
1	A	253	ASP	2.1
1	B	146	PRO	2.1
1	B	206	HIS	2.0
1	D	165	ARG	2.0
1	D	227	GLY	2.0

6.2 Non-standard residues in protein, DNA, RNA chains ⓘ

There are no non-standard protein/DNA/RNA residues in this entry.

6.3 Carbohydrates ⓘ

There are no carbohydrates in this entry.

6.4 Ligands ⓘ

In the following table, the Atoms column lists the number of modelled atoms in the group and the number defined in the chemical component dictionary. LLDF column lists the quality of electron density of the group with respect to its neighbouring residues in protein, DNA or RNA chains. The B-factors column lists the minimum, median, 95th percentile and maximum values of B factors of atoms in the group. The column labelled 'Q< 0.9' lists the number of atoms with occupancy less than 0.9.

Mol	Type	Chain	Res	Atoms	RSCC	RSR	LLDF	B-factors(Å ²)	Q<0.9
2	V28	B	301	43/43	0.76	0.32	2.11	49,70,98,111	0
2	V28	C	301	43/43	0.92	0.15	2.02	14,27,53,59	0
2	V28	A	301	43/43	0.91	0.15	1.69	10,27,52,54	0
2	V28	D	301	43/43	0.83	0.24	0.85	36,54,72,78	0
4	CA	A	305	1/1	1.00	0.04	-1.21	10,10,10,10	0
4	CA	D	305	1/1	0.97	0.13	-1.65	43,43,43,43	0
3	ZN	A	303	1/1	1.00	0.07	-1.97	9,9,9,9	0
4	CA	A	306	1/1	0.99	0.07	-2.01	9,9,9,9	0
4	CA	D	306	1/1	0.97	0.06	-2.01	36,36,36,36	0
4	CA	B	304	1/1	0.97	0.09	-2.05	29,29,29,29	0
4	CA	A	304	1/1	0.99	0.04	-2.10	13,13,13,13	0
4	CA	C	304	1/1	0.99	0.05	-2.18	13,13,13,13	0
3	ZN	C	303	1/1	0.99	0.07	-2.62	8,8,8,8	0

Continued on next page...

Continued from previous page...

Mol	Type	Chain	Res	Atoms	RSCC	RSR	LLDF	B-factors(\AA^2)	Q<0.9
3	ZN	C	302	1/1	1.00	0.06	-2.65	13,13,13,13	0
4	CA	B	305	1/1	0.98	0.06	-3.29	39,39,39,39	0
4	CA	C	305	1/1	1.00	0.03	-3.31	11,11,11,11	0
3	ZN	D	303	1/1	0.98	0.04	-3.96	35,35,35,35	0
4	CA	D	304	1/1	0.98	0.06	-4.16	37,37,37,37	0
4	CA	B	306	1/1	0.96	0.07	-5.19	34,34,34,34	0
4	CA	C	306	1/1	1.00	0.04	-5.30	8,8,8,8	0
3	ZN	B	303	1/1	0.99	0.05	-6.61	33,33,33,33	0
3	ZN	D	302	1/1	0.98	0.03	-	38,38,38,38	0
3	ZN	B	302	1/1	0.99	0.06	-	38,38,38,38	0
3	ZN	A	302	1/1	1.00	0.06	-	12,12,12,12	0

6.5 Other polymers [i](#)

There are no such residues in this entry.