



Full wwPDB X-ray Structure Validation Report ⓘ

May 23, 2016 – 04:38 PM EDT

PDB ID : 5I86
Title : Crystal structure of the bromodomain of human CREBBP bound to the benzodiazepinone G02778174
Authors : Jayaram, H.; Poy, F.; Setser, J.W.; Bellon, S.F.
Deposited on : 2016-02-18
Resolution : 1.05 Å(reported)

This is a Full wwPDB X-ray Structure Validation Report for a publicly released PDB entry.
We welcome your comments at validation@mail.wwpdb.org
A user guide is available at
<http://wwpdb.org/validation/2016/XrayValidationReportHelp>
with specific help available everywhere you see the ⓘ symbol.

The following versions of software and data (see [references ⓘ](#)) were used in the production of this report:

MolProbity : 4.02b-467
Mogul : 1.7.1 (RC1), CSD as537be (2016)
Xtriage (Phenix) : 1.9-1692
EDS : rb-20027674
Percentile statistics : 20151230.v01 (using entries in the PDB archive December 30th 2015)
Refmac : 5.8.0135
CCP4 : 6.5.0
Ideal geometry (proteins) : Engh & Huber (2001)
Ideal geometry (DNA, RNA) : Parkinson et al. (1996)
Validation Pipeline (wwPDB-VP) : rb-20027674

i

X-RAY DIFFRACTION

A.

Ramachandran outliers

electron density. The numeric value is given above the bar.

1

The following table lists non-polymeric compounds, carbohydrate monomers and non-standard residues in protein, DNA, RNA chains that are outliers for geometric or electron-density-fit criteria:

Mol	Type	Chain	Res	Chirality	Geometry	Clashes	Electron density
4	69A	A	1203	-	-	-	X
4	69A	B	1202	-	-	-	X

2 Entry composition [i](#)

There are 5 unique types of molecules in this entry. The entry contains 2474 atoms, of which 0 are hydrogens and 0 are deuteriums.

In the tables below, the ZeroOcc column contains the number of atoms modelled with zero occupancy, the AltConf column contains the number of residues with at least one atom in alternate conformation and the Trace column contains the number of residues modelled with at most 2 atoms.

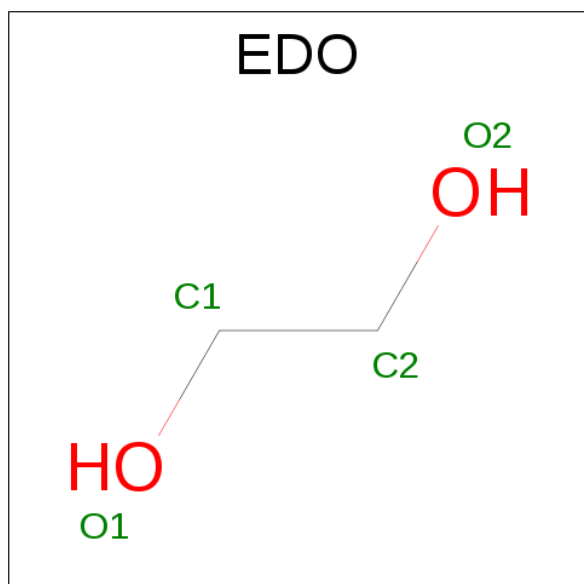
- Molecule 1 is a protein called CREB-binding protein.

Mol	Chain	Residues	Atoms					ZeroOcc	AltConf	Trace
1	A	115	Total	C	N	O	S	0	3	0
			997	646	163	182	6			
1	B	114	Total	C	N	O	S	0	8	0
			1035	670	171	188	6			

There are 4 discrepancies between the modelled and reference sequences:

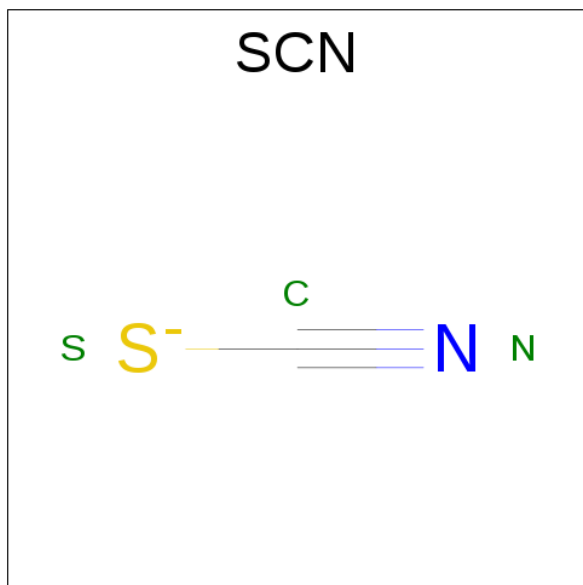
Chain	Residue	Modelled	Actual	Comment	Reference
A	1080	GLY	-	expression tag	UNP Q92793
A	1081	SER	-	expression tag	UNP Q92793
B	1080	GLY	-	expression tag	UNP Q92793
B	1081	SER	-	expression tag	UNP Q92793

- Molecule 2 is 1,2-ETHANEDIOL (three-letter code: EDO) (formula: $C_2H_6O_2$).



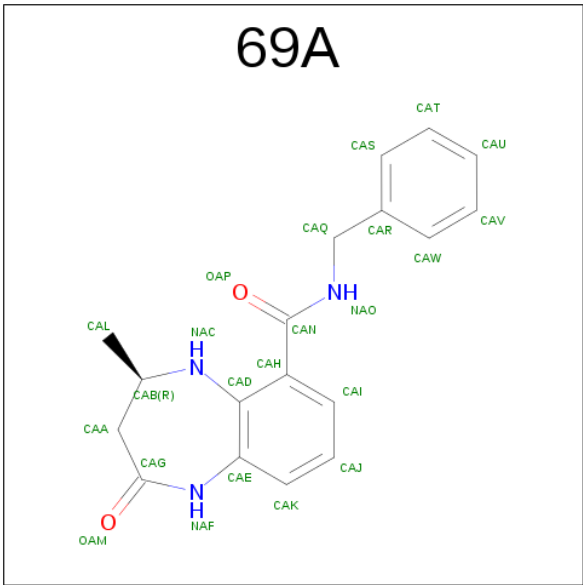
Mol	Chain	Residues	Atoms			ZeroOcc	AltConf
2	A	1	Total	C	O	0	0
			4	2	2		
2	B	1	Total	C	O	0	0
			4	2	2		

- Molecule 3 is THIOCYANATE ION (three-letter code: SCN) (formula: CNS).



Mol	Chain	Residues	Atoms				ZeroOcc	AltConf
3	A	1	Total	C	N	S	0	0
			3	1	1	1		

- Molecule 4 is (4R)-N-benzyl-4-methyl-2-oxo-2,3,4,5-tetrahydro-1H-1,5-benzodiazepine-6-carboxamide (three-letter code: 69A) (formula: C₁₈H₁₉N₃O₂).



Mol	Chain	Residues	Atoms				ZeroOcc	AltConf
4	A	1	Total	C	N	O	0	0
			23	18	3	2		
4	B	1	Total	C	N	O	0	0
			23	18	3	2		

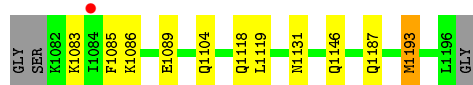
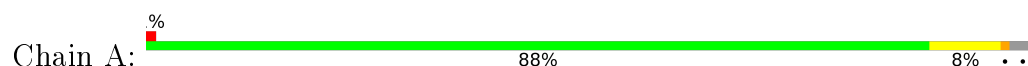
- Molecule 5 is water.

Mol	Chain	Residues	Atoms		ZeroOcc	AltConf
5	A	196	Total	O	0	0
			196	196		
5	B	189	Total	O	0	0
			189	189		

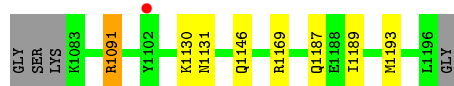
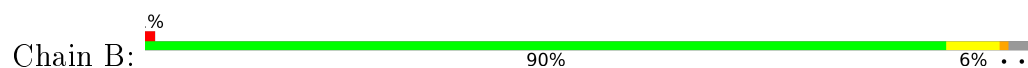
3 Residue-property plots [i](#)

These plots are drawn for all protein, RNA and DNA chains in the entry. The first graphic for a chain summarises the proportions of errors displayed in the second graphic. The second graphic shows the sequence view annotated by issues in geometry and electron density. Residues are color-coded according to the number of geometric quality criteria for which they contain at least one outlier: green = 0, yellow = 1, orange = 2 and red = 3 or more. A red dot above a residue indicates a poor fit to the electron density ($RSRZ > 2$). Stretches of 2 or more consecutive residues without any outlier are shown as a green connector. Residues present in the sample, but not in the model, are shown in grey.

- Molecule 1: CREB-binding protein



- Molecule 1: CREB-binding protein



4 Data and refinement statistics

Property	Value	Source
Space group	P 1	Depositor
Cell constants a, b, c, α , β , γ	33.99Å 42.00Å 49.80Å 96.77° 109.70° 99.39°	Depositor
Resolution (Å)	40.71 – 1.05 40.72 – 1.05	Depositor EDS
% Data completeness (in resolution range)	92.6 (40.71-1.05) 87.0 (40.72-1.05)	Depositor EDS
R_{merge}	0.03	Depositor
R_{sym}	(Not available)	Depositor
$\langle I/\sigma(I) \rangle$ ¹	2.04 (at 1.05Å)	Xtriage
Refinement program	REFMAC	Depositor
R, R_{free}	0.139 , 0.161 0.148 , 0.170	Depositor DCC
R_{free} test set	5438 reflections (5.26%)	DCC
Wilson B-factor (Å ²)	10.4	Xtriage
Anisotropy	0.424	Xtriage
Bulk solvent k_{sol} (e/Å ³), B_{sol} (Å ²)	0.39 , 52.1	EDS
L-test for twinning ²	$\langle L \rangle = 0.50$, $\langle L^2 \rangle = 0.33$	Xtriage
Estimated twinning fraction	No twinning to report.	Xtriage
F_o, F_c correlation	0.97	EDS
Total number of atoms	2474	wwPDB-VP
Average B, all atoms (Å ²)	16.0	wwPDB-VP

Xtriage's analysis on translational NCS is as follows: *The largest off-origin peak in the Patterson function is 9.80% of the height of the origin peak. No significant pseudotranslation is detected.*

¹Intensities estimated from amplitudes.

²Theoretical values of $\langle |L| \rangle$, $\langle L^2 \rangle$ for acentric reflections are 0.5, 0.375 respectively for untwinned datasets, and 0.333, 0.2 for perfectly twinned datasets.

5 Model quality

5.1 Standard geometry

Bond lengths and bond angles in the following residue types are not validated in this section: 69A, SCN, EDO

The Z score for a bond length (or angle) is the number of standard deviations the observed value is removed from the expected value. A bond length (or angle) with $|Z| > 5$ is considered an outlier worth inspection. RMSZ is the root-mean-square of all Z scores of the bond lengths (or angles).

Mol	Chain	Bond lengths		Bond angles	
		RMSZ	$\# Z > 5$	RMSZ	$\# Z > 5$
1	A	0.48	0/1024	0.70	2/1388 (0.1%)
1	B	0.53	0/1066	0.74	1/1447 (0.1%)
All	All	0.50	0/2090	0.72	3/2835 (0.1%)

Chiral center outliers are detected by calculating the chiral volume of a chiral center and verifying if the center is modelled as a planar moiety or with the opposite hand. A planarity outlier is detected by checking planarity of atoms in a peptide group, atoms in a mainchain group or atoms of a sidechain that are expected to be planar.

Mol	Chain	#Chirality outliers	#Planarity outliers
1	A	0	1
1	B	0	1
All	All	0	2

There are no bond length outliers.

All (3) bond angle outliers are listed below:

Mol	Chain	Res	Type	Atoms	Z	Observed($^{\circ}$)	Ideal($^{\circ}$)
1	A	1193[A]	MET	CG-SD-CE	-5.57	91.28	100.20
1	A	1193[B]	MET	CG-SD-CE	-5.57	91.28	100.20
1	B	1169	ARG	NE-CZ-NH2	-5.54	117.53	120.30

There are no chirality outliers.

All (2) planarity outliers are listed below:

Mol	Chain	Res	Type	Group
1	A	1104[A]	GLN	Mainchain
1	B	1091[A]	ARG	Sidechain

5.2 Too-close contacts ⓘ

In the following table, the Non-H and H(model) columns list the number of non-hydrogen atoms and hydrogen atoms in the chain respectively. The H(added) column lists the number of hydrogen atoms added and optimized by MolProbity. The Clashes column lists the number of clashes within the asymmetric unit, whereas Symm-Clashes lists symmetry related clashes.

Mol	Chain	Non-H	H(model)	H(added)	Clashes	Symm-Clashes
1	A	997	0	986	10	0
1	B	1035	0	1022	11	0
2	A	4	0	6	0	0
2	B	4	0	6	0	0
3	A	3	0	0	0	0
4	A	23	0	0	0	0
4	B	23	0	0	0	0
5	A	196	0	0	3	0
5	B	189	0	0	3	0
All	All	2474	0	2020	17	0

The all-atom clashscore is defined as the number of clashes found per 1000 atoms (including hydrogen atoms). The all-atom clashscore for this structure is 4.

All (17) close contacts within the same asymmetric unit are listed below, sorted by their clash magnitude.

Atom-1	Atom-2	Interatomic distance (Å)	Clash overlap (Å)
1:B:1091[B]:ARG:NH2	5:B:1301:HOH:O	1.99	0.95
1:B:1187:GLN:HG3	5:B:1359:HOH:O	1.67	0.94
1:A:1187:GLN:HG2	5:A:1304:HOH:O	1.82	0.79
1:A:1146:GLN:HE22	1:B:1131:ASN:HD22	1.42	0.67
1:A:1118:GLN:HG2	5:A:1406:HOH:O	2.00	0.61
1:A:1083:LYS:HE3	1:A:1085:PHE:CZ	2.35	0.61
1:B:1130:LYS:HE2	1:B:1130:LYS:HA	1.81	0.61
1:A:1131:ASN:HD22	1:B:1146:GLN:HE22	1.49	0.60
1:A:1146:GLN:HE22	1:B:1131:ASN:ND2	2.01	0.59
1:A:1131:ASN:ND2	1:B:1146:GLN:HE22	2.03	0.57
1:B:1187:GLN:CG	5:B:1359:HOH:O	2.41	0.52
1:A:1119:LEU:HD23	5:A:1473:HOH:O	2.12	0.49
1:B:1189:ILE:HG13	1:B:1193[A]:MET:HG2	1.95	0.48
1:A:1086:LYS:HB2	1:A:1089:GLU:HG3	1.96	0.47
1:A:1193[A]:MET:HB3	1:A:1193[A]:MET:HE2	1.61	0.47
1:B:1189:ILE:HG13	1:B:1193[B]:MET:HG2	1.98	0.46
1:B:1189:ILE:HG13	1:B:1193[A]:MET:CG	2.50	0.41

There are no symmetry-related clashes.

5.3 Torsion angles [i](#)

5.3.1 Protein backbone [i](#)

In the following table, the Percentiles column shows the percent Ramachandran outliers of the chain as a percentile score with respect to all X-ray entries followed by that with respect to entries of similar resolution.

The Analysed column shows the number of residues for which the backbone conformation was analysed, and the total number of residues.

Mol	Chain	Analysed	Favoured	Allowed	Outliers	Percentiles	
1	A	116/118 (98%)	116 (100%)	0	0	100	100
1	B	120/118 (102%)	120 (100%)	0	0	100	100
All	All	236/236 (100%)	236 (100%)	0	0	100	100

There are no Ramachandran outliers to report.

5.3.2 Protein sidechains [i](#)

In the following table, the Percentiles column shows the percent sidechain outliers of the chain as a percentile score with respect to all X-ray entries followed by that with respect to entries of similar resolution.

The Analysed column shows the number of residues for which the sidechain conformation was analysed, and the total number of residues.

Mol	Chain	Analysed	Rotameric	Outliers	Percentiles	
1	A	112/110 (102%)	112 (100%)	0	100	100
1	B	116/110 (106%)	116 (100%)	0	100	100
All	All	228/220 (104%)	228 (100%)	0	100	100

There are no protein residues with a non-rotameric sidechain to report.

Some sidechains can be flipped to improve hydrogen bonding and reduce clashes. All (2) such sidechains are listed below:

Mol	Chain	Res	Type
1	A	1131	ASN
1	B	1131	ASN

5.3.3 RNA ⓘ

There are no RNA molecules in this entry.

5.4 Non-standard residues in protein, DNA, RNA chains ⓘ

There are no non-standard protein/DNA/RNA residues in this entry.

5.5 Carbohydrates ⓘ

There are no carbohydrates in this entry.

5.6 Ligand geometry ⓘ

5 ligands are modelled in this entry.

In the following table, the Counts columns list the number of bonds (or angles) for which Mogul statistics could be retrieved, the number of bonds (or angles) that are observed in the model and the number of bonds (or angles) that are defined in the chemical component dictionary. The Link column lists molecule types, if any, to which the group is linked. The Z score for a bond length (or angle) is the number of standard deviations the observed value is removed from the expected value. A bond length (or angle) with $|Z| > 2$ is considered an outlier worth inspection. RMSZ is the root-mean-square of all Z scores of the bond lengths (or angles).

Mol	Type	Chain	Res	Link	Bond lengths			Bond angles		
					Counts	RMSZ	$\# Z > 2$	Counts	RMSZ	$\# Z > 2$
2	EDO	A	1201	-	3,3,3	0.48	0	2,2,2	0.58	0
3	SCN	A	1202	-	2,2,2	1.55	1 (50%)	1,1,1	0.56	0
4	69A	A	1203	-	23,25,25	1.82	3 (13%)	27,34,34	1.49	2 (7%)
2	EDO	B	1201	-	3,3,3	0.54	0	2,2,2	0.55	0
4	69A	B	1202	-	23,25,25	2.05	6 (26%)	27,34,34	1.60	2 (7%)

In the following table, the Chirals column lists the number of chiral outliers, the number of chiral centers analysed, the number of these observed in the model and the number defined in the chemical component dictionary. Similar counts are reported in the Torsion and Rings columns. '-' means no outliers of that kind were identified.

Mol	Type	Chain	Res	Link	Chirals	Torsions	Rings
2	EDO	A	1201	-	-	0/1/1/1	0/0/0/0
3	SCN	A	1202	-	-	0/0/0/0	0/0/0/0
4	69A	A	1203	-	-	0/9/21/21	0/3/3/3
2	EDO	B	1201	-	-	0/1/1/1	0/0/0/0
4	69A	B	1202	-	-	0/9/21/21	0/3/3/3

All (10) bond length outliers are listed below:

Mol	Chain	Res	Type	Atoms	Z	Observed(Å)	Ideal(Å)
4	B	1202	69A	CAA-CAG	-6.00	1.42	1.50
4	A	1203	69A	CAA-CAG	-5.52	1.43	1.50
4	A	1203	69A	CAH-CAN	-4.49	1.40	1.50
4	B	1202	69A	CAH-CAN	-4.32	1.40	1.50
4	A	1203	69A	CAQ-CAR	-3.98	1.42	1.51
4	B	1202	69A	CAQ-CAR	-3.75	1.42	1.51
4	B	1202	69A	CAD-CAE	-3.32	1.37	1.40
3	A	1202	SCN	C-S	-2.19	1.50	1.63
4	B	1202	69A	CAG-NAF	2.06	1.38	1.35
4	B	1202	69A	CAH-CAD	2.20	1.44	1.41

All (4) bond angle outliers are listed below:

Mol	Chain	Res	Type	Atoms	Z	Observed(°)	Ideal(°)
4	B	1202	69A	OAM-CAG-NAF	-3.04	117.47	121.03
4	A	1203	69A	OAM-CAG-NAF	-2.45	118.16	121.03
4	A	1203	69A	CAK-CAE-CAD	5.56	121.38	117.16
4	B	1202	69A	CAK-CAE-CAD	5.87	121.61	117.16

There are no chirality outliers.

There are no torsion outliers.

There are no ring outliers.

No monomer is involved in short contacts.

5.7 Other polymers [i](#)

There are no such residues in this entry.

5.8 Polymer linkage issues [i](#)

There are no chain breaks in this entry.

6 Fit of model and data [i](#)

6.1 Protein, DNA and RNA chains [i](#)

In the following table, the column labelled ‘#RSRZ> 2’ contains the number (and percentage) of RSRZ outliers, followed by percent RSRZ outliers for the chain as percentile scores relative to all X-ray entries and entries of similar resolution. The OWAB column contains the minimum, median, 95th percentile and maximum values of the occupancy-weighted average B-factor per residue. The column labelled ‘Q< 0.9’ lists the number of (and percentage) of residues with an average occupancy less than 0.9.

Mol	Chain	Analysed	<RSRZ>	#RSRZ>2	OWAB(Å ²)	Q<0.9
1	A	115/118 (97%)	-0.13	1 (0%) 85 80	8, 13, 30, 47	0
1	B	114/118 (96%)	-0.16	1 (0%) 85 80	8, 11, 23, 38	0
All	All	229/236 (97%)	-0.14	2 (0%) 85 80	8, 12, 28, 47	0

All (2) RSRZ outliers are listed below:

Mol	Chain	Res	Type	RSRZ
1	A	1084	ILE	2.5
1	B	1102[A]	TYR	2.2

6.2 Non-standard residues in protein, DNA, RNA chains [i](#)

There are no non-standard protein/DNA/RNA residues in this entry.

6.3 Carbohydrates [i](#)

There are no carbohydrates in this entry.

6.4 Ligands [i](#)

In the following table, the Atoms column lists the number of modelled atoms in the group and the number defined in the chemical component dictionary. LLDF column lists the quality of electron density of the group with respect to its neighbouring residues in protein, DNA or RNA chains. The B-factors column lists the minimum, median, 95th percentile and maximum values of B factors of atoms in the group. The column labelled ‘Q< 0.9’ lists the number of atoms with occupancy less than 0.9.

Mol	Type	Chain	Res	Atoms	RSCC	RSR	LLDF	B-factors(Å ²)	Q<0.9
4	69A	A	1203	23/23	0.95	0.08	2.80	11,16,21,22	0

Continued on next page...

Continued from previous page...

Mol	Type	Chain	Res	Atoms	RSCC	RSR	LLDF	B-factors(\AA^2)	Q<0.9
4	69A	B	1202	23/23	0.96	0.08	2.64	9,16,19,23	0
2	EDO	A	1201	4/4	0.98	0.07	0.52	13,14,18,20	4
3	SCN	A	1202	3/3	0.98	0.06	-0.29	17,17,18,21	0
2	EDO	B	1201	4/4	0.97	0.06	-	13,18,19,22	4

6.5 Other polymers [i](#)

There are no such residues in this entry.