



Full wwPDB X-ray Structure Validation Report ⓘ

Jan 31, 2016 – 07:59 PM GMT

PDB ID : 1I9G
Title : CRYSTAL STRUCTURE OF AN ADOMET DEPENDENT METHYL-TRANSFERASE
Authors : Gupta, A.; Kumar, P.H.; Dineshkumar, T.K.; Varshney, U.; Subramanya, H.S.; TB Structural Genomics Consortium (TBSGC)
Deposited on : 2001-03-20
Resolution : 1.98 Å(reported)

This is a Full wwPDB X-ray Structure Validation Report for a publicly released PDB entry.
We welcome your comments at validation@mail.wwpdb.org
A user guide is available at
<http://wwpdb.org/validation/2016/XrayValidationReportHelp>
with specific help available everywhere you see the ⓘ symbol.

The following versions of software and data (see [references ⓘ](#)) were used in the production of this report:

MolProbity : 4.02b-467
Mogul : 1.7 (RC4), CSD as536be (2015)
Xtriage (Phenix) : 1.9-1692
EDS : rb-20026688
Percentile statistics : 20151230.v01 (using entries in the PDB archive December 30th 2015)
Refmac : 5.8.0135
CCP4 : 6.5.0
Ideal geometry (proteins) : Engh & Huber (2001)
Ideal geometry (DNA, RNA) : Parkinson et al. (1996)
Validation Pipeline (wwPDB-VP) : trunk26865

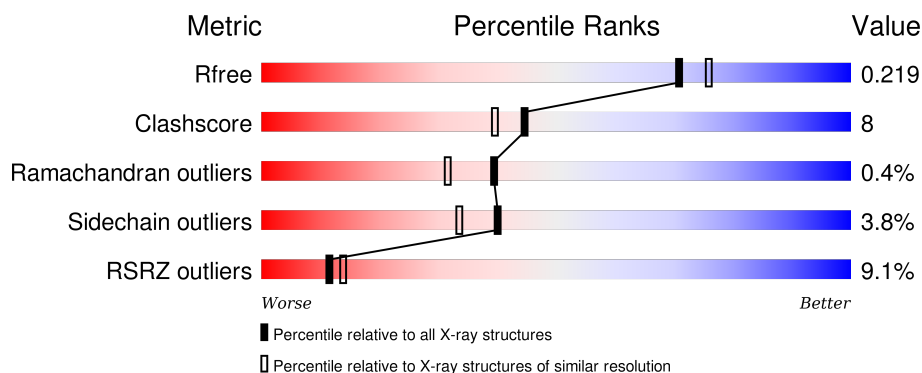
1 Overall quality at a glance

The following experimental techniques were used to determine the structure:

X-RAY DIFFRACTION

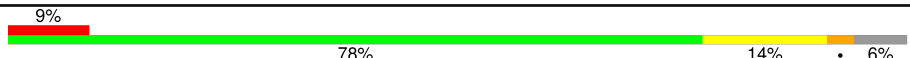
The reported resolution of this entry is 1.98 Å.

Percentile scores (ranging between 0-100) for global validation metrics of the entry are shown in the following graphic. The table shows the number of entries on which the scores are based.



Metric	Whole archive (#Entries)	Similar resolution (#Entries, resolution range(Å))
R_{free}	91344	8664 (2.00-1.96)
Clashscore	102246	9905 (2.00-1.96)
Ramachandran outliers	100387	9792 (2.00-1.96)
Sidechain outliers	100360	9791 (2.00-1.96)
RSRZ outliers	91569	8679 (2.00-1.96)

The table below summarises the geometric issues observed across the polymeric chains and their fit to the electron density. The red, orange, yellow and green segments on the lower bar indicate the fraction of residues that contain outliers for ≥ 3 , 2, 1 and 0 types of geometric quality criteria. A grey segment represents the fraction of residues that are not modelled. The numeric value for each fraction is indicated below the corresponding segment, with a dot representing fractions $\leq 5\%$. The upper red bar (where present) indicates the fraction of residues that have poor fit to the electron density. The numeric value is given above the bar.

Mol	Chain	Length	Quality of chain
1	A	280	

2 Entry composition [i](#)

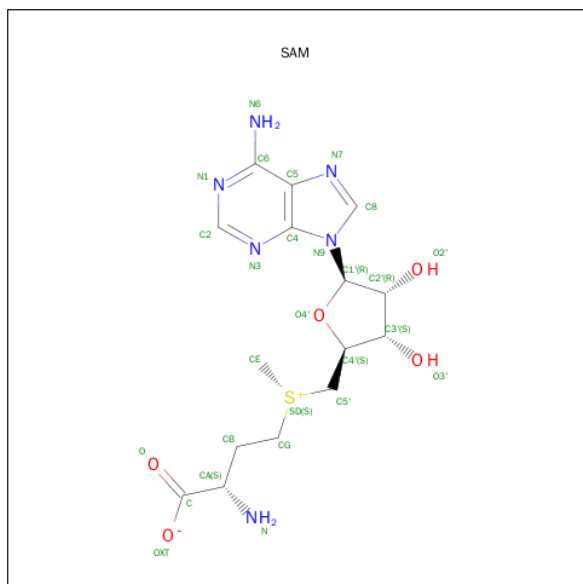
There are 3 unique types of molecules in this entry. The entry contains 2194 atoms, of which 0 are hydrogens and 0 are deuteriums.

In the tables below, the ZeroOcc column contains the number of atoms modelled with zero occupancy, the AltConf column contains the number of residues with at least one atom in alternate conformation and the Trace column contains the number of residues modelled with at most 2 atoms.

- Molecule 1 is a protein called HYPOTHETICAL PROTEIN RV2118C.

Mol	Chain	Residues	Atoms					ZeroOcc	AltConf	Trace
1	A	264	Total	C	N	O	S	0	0	0
			2002	1260	370	364	8			

- Molecule 2 is S-ADENOSYLMETHIONINE (three-letter code: SAM) (formula: C₁₅H₂₂N₆O₅S).



Mol	Chain	Residues	Atoms					ZeroOcc	AltConf
2	A	1	Total	C	N	O	S	0	0
			27	15	6	5	1		

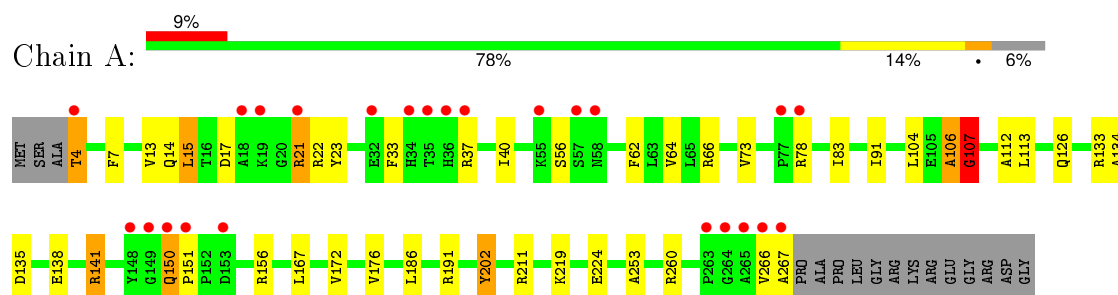
- Molecule 3 is water.

Mol	Chain	Residues	Atoms		ZeroOcc	AltConf
3	A	165	Total	O	0	0
			165	165		

3 Residue-property plots [i](#)

These plots are drawn for all protein, RNA and DNA chains in the entry. The first graphic for a chain summarises the proportions of errors displayed in the second graphic. The second graphic shows the sequence view annotated by issues in geometry and electron density. Residues are color-coded according to the number of geometric quality criteria for which they contain at least one outlier: green = 0, yellow = 1, orange = 2 and red = 3 or more. A red dot above a residue indicates a poor fit to the electron density ($\text{RSRZ} > 2$). Stretches of 2 or more consecutive residues without any outlier are shown as a green connector. Residues present in the sample, but not in the model, are shown in grey.

• Molecule 1: HYPOTHETICAL PROTEIN RV2118C



4 Data and refinement statistics

Property	Value	Source
Space group	I 2 2 2	Depositor
Cell constants a, b, c, α , β , γ	66.42Å 86.79Å 138.10Å 90.00° 90.00° 90.00°	Depositor
Resolution (Å)	10.00 – 1.98 14.95 – 1.98	Depositor EDS
% Data completeness (in resolution range)	(Not available) (10.00-1.98) 98.0 (14.95-1.98)	Depositor EDS
R_{merge}	(Not available)	Depositor
R_{sym}	4.90	Depositor
$\langle I/\sigma(I) \rangle$ ¹	4.98 (at 1.98Å)	Xtriage
Refinement program	REFMAC	Depositor
R, R_{free}	0.205 , 0.236 0.189 , 0.219	Depositor DCC
R_{free} test set	1411 reflections (5.42%)	DCC
Wilson B-factor (Å ²)	23.2	Xtriage
Anisotropy	0.228	Xtriage
Bulk solvent k_{sol} (e/Å ³), B_{sol} (Å ²)	0.44 , 66.0	EDS
Estimated twinning fraction	No twinning to report.	Xtriage
L-test for twinning ²	$\langle L \rangle = 0.49$, $\langle L^2 \rangle = 0.33$	Xtriage
Outliers	0 of 27574 reflections	Xtriage
F_o, F_c correlation	0.95	EDS
Total number of atoms	2194	wwPDB-VP
Average B, all atoms (Å ²)	32.0	wwPDB-VP

Xtriage's analysis on translational NCS is as follows: *The largest off-origin peak in the Patterson function is 4.91% of the height of the origin peak. No significant pseudotranslation is detected.*

¹Intensities estimated from amplitudes.

²Theoretical values of $\langle |L| \rangle$, $\langle L^2 \rangle$ for acentric reflections are 0.5, 0.375 respectively for untwinned datasets, and 0.333, 0.2 for perfectly twinned datasets.

5 Model quality [i](#)

5.1 Standard geometry [i](#)

Bond lengths and bond angles in the following residue types are not validated in this section: SAM

The Z score for a bond length (or angle) is the number of standard deviations the observed value is removed from the expected value. A bond length (or angle) with $|Z| > 5$ is considered an outlier worth inspection. RMSZ is the root-mean-square of all Z scores of the bond lengths (or angles).

Mol	Chain	Bond lengths		Bond angles	
		RMSZ	$\# Z > 5$	RMSZ	$\# Z > 5$
1	A	0.54	1/2045 (0.0%)	1.22	8/2785 (0.3%)

Chiral center outliers are detected by calculating the chiral volume of a chiral center and verifying if the center is modelled as a planar moiety or with the opposite hand. A planarity outlier is detected by checking planarity of atoms in a peptide group, atoms in a mainchain group or atoms of a sidechain that are expected to be planar.

Mol	Chain	#Chirality outliers	#Planarity outliers
1	A	0	1

All (1) bond length outliers are listed below:

Mol	Chain	Res	Type	Atoms	Z	Observed(Å)	Ideal(Å)
1	A	107	GLY	N-CA	-6.72	1.35	1.46

All (8) bond angle outliers are listed below:

Mol	Chain	Res	Type	Atoms	Z	Observed(°)	Ideal(°)
1	A	106	ALA	C-N-CA	20.50	165.35	122.30
1	A	141	ARG	NE-CZ-NH1	10.24	125.42	120.30
1	A	106	ALA	N-CA-CB	7.70	120.88	110.10
1	A	211	ARG	NE-CZ-NH1	-7.09	116.76	120.30
1	A	135	ASP	CB-CG-OD2	5.92	123.63	118.30
1	A	202	TYR	CA-CB-CG	5.81	124.44	113.40
1	A	106	ALA	CA-C-N	-5.39	105.42	116.20
1	A	224	GLU	OE1-CD-OE2	-5.13	117.15	123.30

There are no chirality outliers.

All (1) planarity outliers are listed below:

Mol	Chain	Res	Type	Group
1	A	106	ALA	Peptide

5.2 Too-close contacts ⓘ

In the following table, the Non-H and H(model) columns list the number of non-hydrogen atoms and hydrogen atoms in the chain respectively. The H(added) column lists the number of hydrogen atoms added and optimized by MolProbity. The Clashes column lists the number of clashes within the asymmetric unit, whereas Symm-Clashes lists symmetry related clashes.

Mol	Chain	Non-H	H(model)	H(added)	Clashes	Symm-Clashes
1	A	2002	0	2011	32	0
2	A	27	0	22	1	0
3	A	165	0	0	1	0
All	All	2194	0	2033	32	0

The all-atom clashscore is defined as the number of clashes found per 1000 atoms (including hydrogen atoms). The all-atom clashscore for this structure is 8.

All (32) close contacts within the same asymmetric unit are listed below, sorted by their clash magnitude.

Atom-1	Atom-2	Interatomic distance (Å)	Clash overlap (Å)
1:A:15:LEU:HD22	1:A:64:VAL:HG22	1.53	0.90
1:A:21:ARG:HE	1:A:37:ARG:HH12	1.35	0.75
1:A:138:GLU:OE1	1:A:141:ARG:NH2	2.21	0.73
1:A:126:GLN:HE22	1:A:156:ARG:NH2	1.96	0.64
1:A:13:VAL:CG1	1:A:64:VAL:HG13	2.29	0.62
1:A:13:VAL:HG11	1:A:64:VAL:HG13	1.84	0.59
1:A:167:LEU:O	1:A:191:ARG:NH2	2.36	0.58
1:A:7:PHE:CE1	1:A:64:VAL:HG12	2.39	0.57
1:A:21:ARG:HE	1:A:37:ARG:NH1	2.03	0.55
1:A:21:ARG:NE	1:A:37:ARG:HH12	2.03	0.52
1:A:150:GLN:HG3	1:A:151:PRO:HD2	1.92	0.52
1:A:202:TYR:CE2	1:A:253:ALA:HB3	2.45	0.51
1:A:40:ILE:HD11	1:A:62:PHE:CD2	2.46	0.51
1:A:73:VAL:HG13	1:A:112:ALA:HB1	1.91	0.51
1:A:4:THR:HB	1:A:66:ARG:CZ	2.41	0.50
1:A:83:ILE:CD1	1:A:91:ILE:HD12	2.42	0.50
1:A:13:VAL:HG12	1:A:15:LEU:HD23	1.94	0.49
1:A:219:LYS:HE2	3:A:419:HOH:O	2.12	0.48
1:A:186:LEU:HD13	1:A:219:LYS:HG3	1.96	0.48
1:A:266:VAL:O	1:A:267:ALA:C	2.52	0.47

Continued on next page...

Continued from previous page...

Atom-1	Atom-2	Interatomic distance (Å)	Clash overlap (Å)
1:A:23:TYR:HB3	1:A:33:PHE:HZ	1.79	0.47
1:A:21:ARG:HD2	1:A:23:TYR:OH	2.15	0.47
1:A:113:LEU:HD21	1:A:176:VAL:HG11	1.96	0.47
1:A:7:PHE:CZ	1:A:64:VAL:HG12	2.50	0.46
1:A:14:GLN:OE1	1:A:22:ARG:NH2	2.48	0.46
1:A:17:ASP:OD1	1:A:21:ARG:HG3	2.16	0.45
1:A:107:GLY:HA3	2:A:301:SAM:O4'	2.18	0.44
1:A:23:TYR:HB3	1:A:33:PHE:CZ	2.53	0.44
1:A:134:ALA:O	1:A:138:GLU:HG2	2.19	0.42
1:A:15:LEU:CD1	1:A:40:ILE:HD13	2.49	0.42
1:A:150:GLN:HG3	1:A:151:PRO:CD	2.49	0.41
1:A:104:LEU:HB2	1:A:172:VAL:HG11	2.03	0.41

There are no symmetry-related clashes.

5.3 Torsion angles [i](#)

5.3.1 Protein backbone [i](#)

In the following table, the Percentiles column shows the percent Ramachandran outliers of the chain as a percentile score with respect to all X-ray entries followed by that with respect to entries of similar resolution.

The Analysed column shows the number of residues for which the backbone conformation was analysed, and the total number of residues.

Mol	Chain	Analysed	Favoured	Allowed	Outliers	Percentiles	
1	A	262/280 (94%)	256 (98%)	5 (2%)	1 (0%)	39	31

All (1) Ramachandran outliers are listed below:

Mol	Chain	Res	Type
1	A	107	GLY

5.3.2 Protein sidechains [i](#)

In the following table, the Percentiles column shows the percent sidechain outliers of the chain as a percentile score with respect to all X-ray entries followed by that with respect to entries of similar resolution.

The Analysed column shows the number of residues for which the sidechain conformation was

analysed, and the total number of residues.

Mol	Chain	Analysed	Rotameric	Outliers	Percentiles	
1	A	208/219 (95%)	200 (96%)	8 (4%)	40	33

All (8) residues with a non-rotameric sidechain are listed below:

Mol	Chain	Res	Type
1	A	4	THR
1	A	15	LEU
1	A	21	ARG
1	A	56	SER
1	A	78	ARG
1	A	133	ARG
1	A	150	GLN
1	A	260	ARG

Some sidechains can be flipped to improve hydrogen bonding and reduce clashes. All (4) such sidechains are listed below:

Mol	Chain	Res	Type
1	A	34	HIS
1	A	58	ASN
1	A	126	GLN
1	A	132	GLN

5.3.3 RNA [i](#)

There are no RNA molecules in this entry.

5.4 Non-standard residues in protein, DNA, RNA chains [i](#)

There are no non-standard protein/DNA/RNA residues in this entry.

5.5 Carbohydrates [i](#)

There are no carbohydrates in this entry.

5.6 Ligand geometry [i](#)

1 ligand is modelled in this entry.

In the following table, the Counts columns list the number of bonds (or angles) for which Mogul statistics could be retrieved, the number of bonds (or angles) that are observed in the model and the number of bonds (or angles) that are defined in the chemical component dictionary. The Link column lists molecule types, if any, to which the group is linked. The Z score for a bond length (or angle) is the number of standard deviations the observed value is removed from the expected value. A bond length (or angle) with $|Z| > 2$ is considered an outlier worth inspection. RMSZ is the root-mean-square of all Z scores of the bond lengths (or angles).

Mol	Type	Chain	Res	Link	Bond lengths			Bond angles		
					Counts	RMSZ	$\# Z > 2$	Counts	RMSZ	$\# Z > 2$
2	SAM	A	301	-	21,29,29	1.68	5 (23%)	17,42,42	1.45	3 (17%)

In the following table, the Chirals column lists the number of chiral outliers, the number of chiral centers analysed, the number of these observed in the model and the number defined in the chemical component dictionary. Similar counts are reported in the Torsion and Rings columns. '-' means no outliers of that kind were identified.

Mol	Type	Chain	Res	Link	Chirals	Torsions	Rings
2	SAM	A	301	-	-	0/8/33/33	0/3/3/3

All (5) bond length outliers are listed below:

Mol	Chain	Res	Type	Atoms	Z	Observed(Å)	Ideal(Å)
2	A	301	SAM	C5'-C4'	-2.60	1.45	1.53
2	A	301	SAM	O3'-C3'	2.13	1.48	1.43
2	A	301	SAM	CG-CB	2.69	1.55	1.52
2	A	301	SAM	C3'-C4'	2.87	1.60	1.53
2	A	301	SAM	O4'-C1'	4.25	1.46	1.41

All (3) bond angle outliers are listed below:

Mol	Chain	Res	Type	Atoms	Z	Observed(°)	Ideal(°)
2	A	301	SAM	C4'-O4'-C1'	-3.13	106.28	109.72
2	A	301	SAM	O4'-C1'-N9	2.06	112.41	108.10
2	A	301	SAM	C4-C5-N7	3.09	112.32	109.48

There are no chirality outliers.

There are no torsion outliers.

There are no ring outliers.

1 monomer is involved in 1 short contact:

Mol	Chain	Res	Type	Clashes	Symm-Clashes
2	A	301	SAM	1	0

5.7 Other polymers [i](#)

There are no such residues in this entry.

5.8 Polymer linkage issues [i](#)

There are no chain breaks in this entry.

6 Fit of model and data ⓘ

6.1 Protein, DNA and RNA chains ⓘ

In the following table, the column labelled ‘#RSRZ> 2’ contains the number (and percentage) of RSRZ outliers, followed by percent RSRZ outliers for the chain as percentile scores relative to all X-ray entries and entries of similar resolution. The OWAB column contains the minimum, median, 95th percentile and maximum values of the occupancy-weighted average B-factor per residue. The column labelled ‘Q< 0.9’ lists the number of (and percentage) of residues with an average occupancy less than 0.9.

Mol	Chain	Analysed	<RSRZ>	#RSRZ>2	OWAB(Å ²)	Q<0.9
1	A	264/280 (94%)	0.33	24 (9%) 11 14	15, 28, 57, 67	0

All (24) RSRZ outliers are listed below:

Mol	Chain	Res	Type	RSRZ
1	A	266	VAL	8.2
1	A	78	ARG	6.1
1	A	267	ALA	5.9
1	A	36	HIS	5.5
1	A	19	LYS	5.1
1	A	58	ASN	4.7
1	A	37	ARG	4.2
1	A	34	HIS	4.2
1	A	57	SER	3.8
1	A	263	PRO	3.8
1	A	18	ALA	3.2
1	A	149	GLY	3.2
1	A	21	ARG	3.1
1	A	55	LYS	2.8
1	A	4	THR	2.8
1	A	265	ALA	2.7
1	A	264	GLY	2.6
1	A	150	GLN	2.6
1	A	153	ASP	2.6
1	A	35	THR	2.3
1	A	148	TYR	2.2
1	A	32	GLU	2.2
1	A	77	PRO	2.1
1	A	151	PRO	2.1

6.2 Non-standard residues in protein, DNA, RNA chains [i](#)

There are no non-standard protein/DNA/RNA residues in this entry.

6.3 Carbohydrates [i](#)

There are no carbohydrates in this entry.

6.4 Ligands [i](#)

In the following table, the Atoms column lists the number of modelled atoms in the group and the number defined in the chemical component dictionary. LLDF column lists the quality of electron density of the group with respect to its neighbouring residues in protein, DNA or RNA chains. The B-factors column lists the minimum, median, 95th percentile and maximum values of B factors of atoms in the group. The column labelled 'Q< 0.9' lists the number of atoms with occupancy less than 0.9.

Mol	Type	Chain	Res	Atoms	RSCC	RSR	LLDF	B-factors(\AA^2)	Q<0.9
2	SAM	A	301	27/27	0.95	0.10	-0.42	24,26,29,30	0

6.5 Other polymers [i](#)

There are no such residues in this entry.