



Full wwPDB X-ray Structure Validation Report ⓘ

Feb 1, 2016 – 09:23 AM GMT

PDB ID : 3IAZ
Title : Structural basis of the prevention of NSAID-induced damage of the gastrointestinal tract by C-terminal half (C-lobe) of bovine colostrum protein lactoferrin: Binding and structural studies of the C-lobe complex with aspirin
Authors : Mir, R.; Singh, N.; Sinha, M.; Sharma, S.; Kaur, P.; Srinivasan, A.; Singh, T.P.
Deposited on : 2009-07-15
Resolution : 2.00 Å(reported)

This is a Full wwPDB X-ray Structure Validation Report for a publicly released PDB entry.
We welcome your comments at validation@mail.wwpdb.org
A user guide is available at
<http://wwpdb.org/validation/2016/XrayValidationReportHelp>
with specific help available everywhere you see the ⓘ symbol.

The following versions of software and data (see [references ⓘ](#)) were used in the production of this report:

MolProbity : 4.02b-467
Mogul : 1.7 (RC4), CSD as536be (2015)
Xtriage (Phenix) : 1.9-1692
EDS : rb-20026688
Percentile statistics : 20151230.v01 (using entries in the PDB archive December 30th 2015)
Refmac : 5.8.0135
CCP4 : 6.5.0
Ideal geometry (proteins) : Engh & Huber (2001)
Ideal geometry (DNA, RNA) : Parkinson et al. (1996)
Validation Pipeline (wwPDB-VP) : trunk26865

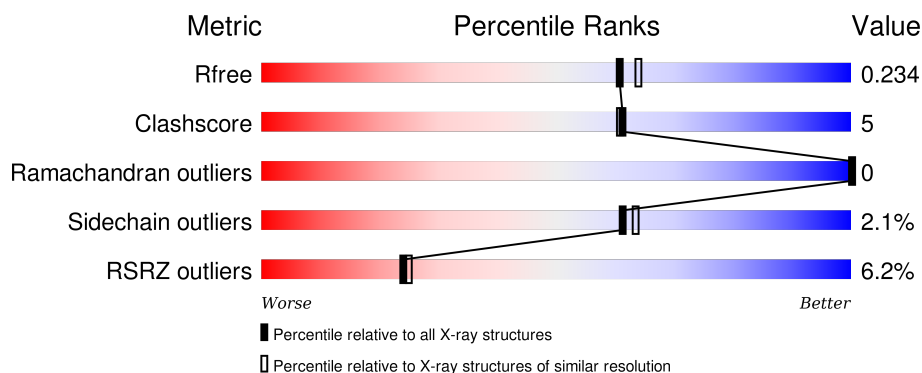
1 Overall quality at a glance ⓘ

The following experimental techniques were used to determine the structure:

X-RAY DIFFRACTION

The reported resolution of this entry is 2.00 Å.

Percentile scores (ranging between 0-100) for global validation metrics of the entry are shown in the following graphic. The table shows the number of entries on which the scores are based.



Metric	Whole archive (#Entries)	Similar resolution (#Entries, resolution range(Å))
R_{free}	91344	6249 (2.00-2.00)
Clashscore	102246	7340 (2.00-2.00)
Ramachandran outliers	100387	7248 (2.00-2.00)
Sidechain outliers	100360	7247 (2.00-2.00)
RSRZ outliers	91569	6262 (2.00-2.00)

The table below summarises the geometric issues observed across the polymeric chains and their fit to the electron density. The red, orange, yellow and green segments on the lower bar indicate the fraction of residues that contain outliers for ≥ 3 , 2, 1 and 0 types of geometric quality criteria. A grey segment represents the fraction of residues that are not modelled. The numeric value for each fraction is indicated below the corresponding segment, with a dot representing fractions $\leq 5\%$. The upper red bar (where present) indicates the fraction of residues that have poor fit to the electron density. The numeric value is given above the bar.

Mol	Chain	Length	Quality of chain
1	A	345	<div> <div>6%</div> <div>88%</div> <div>10% ..</div> </div>

The following table lists non-polymeric compounds, carbohydrate monomers and non-standard residues in protein, DNA, RNA chains that are outliers for geometric or electron-density-fit criteria:

Mol	Type	Chain	Res	Chirality	Geometry	Clashes	Electron density
10	EOH	A	702	-	-	X	-

Continued on next page...

Continued from previous page...

Mol	Type	Chain	Res	Chirality	Geometry	Clashes	Electron density
4	MAN	A	10	X	-	-	-

2 Entry composition

There are 11 unique types of molecules in this entry. The entry contains 3052 atoms, of which 0 are hydrogens and 0 are deuteriums.

In the tables below, the ZeroOcc column contains the number of atoms modelled with zero occupancy, the AltConf column contains the number of residues with at least one atom in alternate conformation and the Trace column contains the number of residues modelled with at most 2 atoms.

- Molecule 1 is a protein called Lactotransferrin.

Mol	Chain	Residues	Atoms					ZeroOcc	AltConf	Trace
1	A	341	Total	C	N	O	S	0	0	0
			2604	1622	454	507	21			

There are 2 discrepancies between the modelled and reference sequences:

Chain	Residue	Modelled	Actual	Comment	Reference
A	565	LYS	ASN	ENGINEERED	UNP P24627
A	608	GLU	LYS	ENGINEERED	UNP P24627

- Molecule 2 is a polymer of unknown type called SUGAR (2-MER).

Mol	Chain	Residues	Atoms				ZeroOcc	AltConf
2	A	2	Total	C	N	O	0	0
			28	16	2	10		

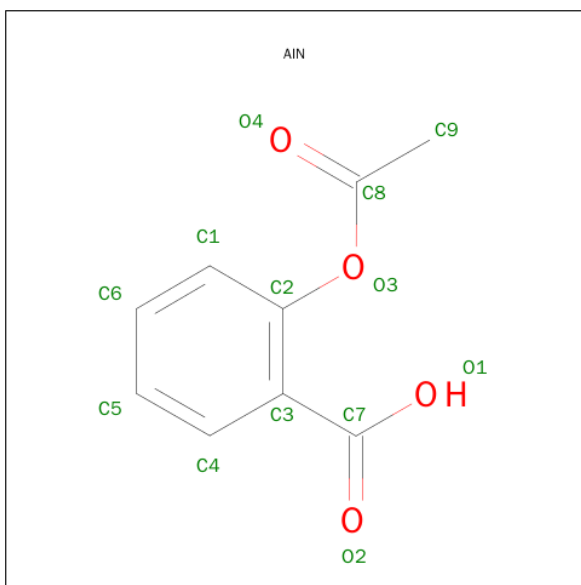
- Molecule 3 is a polymer of unknown type called SUGAR (5-MER).

Mol	Chain	Residues	Atoms				ZeroOcc	AltConf
3	A	5	Total	C	N	O	0	0
			61	34	2	25		

- Molecule 4 is a polymer of unknown type called SUGAR (6-MER).

Mol	Chain	Residues	Atoms				ZeroOcc	AltConf
4	A	6	Total	C	N	O	0	0
			72	40	2	30		

- Molecule 5 is 2-(ACETYLOXY)BENZOIC ACID (three-letter code: AIN) (formula: C₉H₈O₄).



Mol	Chain	Residues	Atoms			ZeroOcc	AltConf
5	A	1	Total	C	O	0	0
			13	9	4		

- Molecule 6 is SULFATE ION (three-letter code: SO4) (formula: O₄S).



Mol	Chain	Residues	Atoms			ZeroOcc	AltConf
6	A	1	Total	O	S	0	0
			5	4	1		

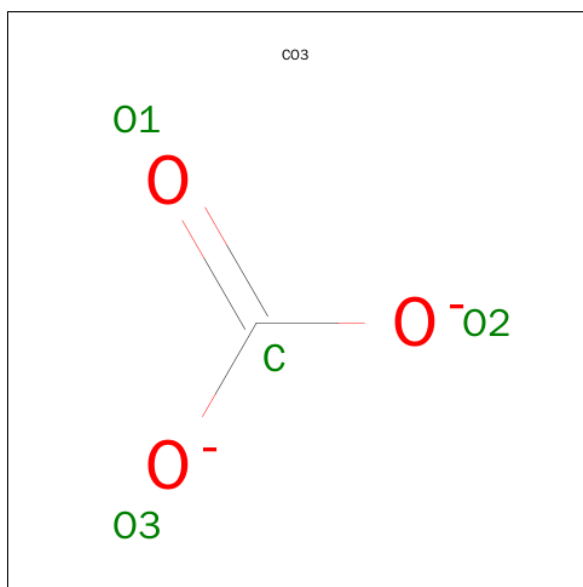
- Molecule 7 is ZINC ION (three-letter code: ZN) (formula: Zn).

Mol	Chain	Residues	Atoms		ZeroOcc	AltConf
7	A	2	Total	Zn	0	0
			2	2		

- Molecule 8 is FE (III) ION (three-letter code: FE) (formula: Fe).

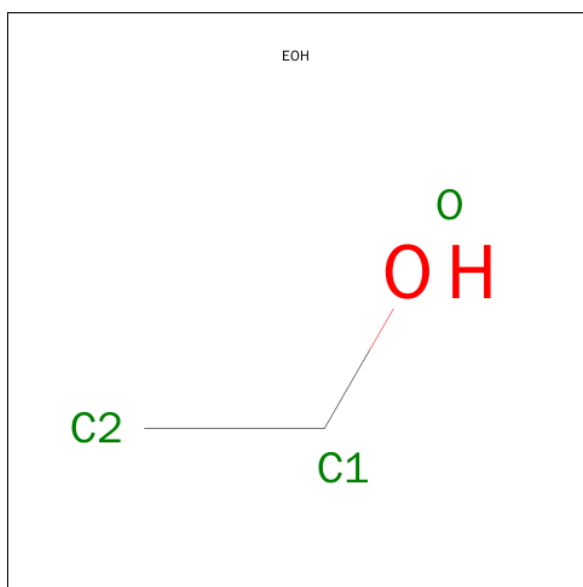
Mol	Chain	Residues	Atoms		ZeroOcc	AltConf
8	A	1	Total	Fe	0	0
			1	1		

- Molecule 9 is CARBONATE ION (three-letter code: CO3) (formula: CO₃).



Mol	Chain	Residues	Atoms			ZeroOcc	AltConf
9	A	1	Total	C	O	0	0
			4	1	3		

- Molecule 10 is ETHANOL (three-letter code: EOH) (formula: C₂H₆O).



Mol	Chain	Residues	Atoms			ZeroOcc	AltConf
10	A	1	Total	C	O	0	0
			3	2	1		

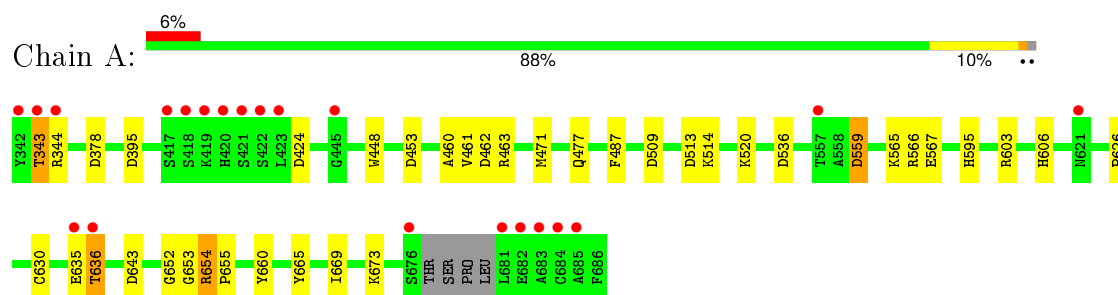
- Molecule 11 is water.

Mol	Chain	Residues	Atoms		ZeroOcc	AltConf
11	A	259	Total	O	0	0
			259	259		

3 Residue-property plots

These plots are drawn for all protein, RNA and DNA chains in the entry. The first graphic for a chain summarises the proportions of errors displayed in the second graphic. The second graphic shows the sequence view annotated by issues in geometry and electron density. Residues are color-coded according to the number of geometric quality criteria for which they contain at least one outlier: green = 0, yellow = 1, orange = 2 and red = 3 or more. A red dot above a residue indicates a poor fit to the electron density ($\text{RSRZ} > 2$). Stretches of 2 or more consecutive residues without any outlier are shown as a green connector. Residues present in the sample, but not in the model, are shown in grey.

- Molecule 1: Lactotransferrin



4 Data and refinement statistics

Property	Value	Source
Space group	P 1 21 1	Depositor
Cell constants a, b, c, α , β , γ	63.31Å 50.47Å 65.94Å 90.00° 107.70° 90.00°	Depositor
Resolution (Å)	63.25 – 2.00 19.90 – 2.00	Depositor EDS
% Data completeness (in resolution range)	96.0 (63.25-2.00) 96.1 (19.90-2.00)	Depositor EDS
R_{merge}	(Not available)	Depositor
R_{sym}	(Not available)	Depositor
$\langle I/\sigma(I) \rangle$ ¹	2.92 (at 2.01Å)	Xtriage
Refinement program	REFMAC 5.0	Depositor
R, R_{free}	0.182 , 0.228 0.187 , 0.234	Depositor DCC
R_{free} test set	1303 reflections (5.28%)	DCC
Wilson B-factor (Å ²)	23.9	Xtriage
Anisotropy	0.398	Xtriage
Bulk solvent k_{sol} (e/Å ³), B_{sol} (Å ²)	0.34 , 57.9	EDS
Estimated twinning fraction	0.027 for l,-k,h	Xtriage
L-test for twinning ²	$\langle L \rangle = 0.48$, $\langle L^2 \rangle = 0.31$	Xtriage
Outliers	0 of 25991 reflections	Xtriage
F_o, F_c correlation	0.95	EDS
Total number of atoms	3052	wwPDB-VP
Average B, all atoms (Å ²)	33.0	wwPDB-VP

Xtriage's analysis on translational NCS is as follows: *The largest off-origin peak in the Patterson function is 5.99% of the height of the origin peak. No significant pseudotranslation is detected.*

¹Intensities estimated from amplitudes.

²Theoretical values of $\langle |L| \rangle$, $\langle L^2 \rangle$ for acentric reflections are 0.5, 0.375 respectively for untwinned datasets, and 0.333, 0.2 for perfectly twinned datasets.

5 Model quality

5.1 Standard geometry

Bond lengths and bond angles in the following residue types are not validated in this section: CO3, BMA, NAG, EOH, ZN, NDG, AIN, SO4, MAN, FE

The Z score for a bond length (or angle) is the number of standard deviations the observed value is removed from the expected value. A bond length (or angle) with $|Z| > 5$ is considered an outlier worth inspection. RMSZ is the root-mean-square of all Z scores of the bond lengths (or angles).

Mol	Chain	Bond lengths		Bond angles	
		RMSZ	# Z >5	RMSZ	# Z >5
1	A	0.62	0/2652	0.89	8/3591 (0.2%)

Chiral center outliers are detected by calculating the chiral volume of a chiral center and verifying if the center is modelled as a planar moiety or with the opposite hand. A planarity outlier is detected by checking planarity of atoms in a peptide group, atoms in a mainchain group or atoms of a sidechain that are expected to be planar.

Mol	Chain	#Chirality outliers	#Planarity outliers
4	A	1	0

There are no bond length outliers.

All (8) bond angle outliers are listed below:

Mol	Chain	Res	Type	Atoms	Z	Observed(°)	Ideal(°)
1	A	378	ASP	CB-CG-OD2	7.05	124.64	118.30
1	A	536	ASP	CB-CG-OD2	6.97	124.58	118.30
1	A	453	ASP	CB-CG-OD2	6.64	124.28	118.30
1	A	509	ASP	CB-CG-OD2	6.44	124.10	118.30
1	A	653	GLY	N-CA-C	-5.96	98.20	113.10
1	A	643	ASP	CB-CG-OD2	5.75	123.48	118.30
1	A	513	ASP	CB-CG-OD2	5.41	123.17	118.30
1	A	424	ASP	CB-CG-OD2	5.18	122.96	118.30

All (1) chirality outliers are listed below:

Mol	Chain	Res	Type	Atom
4	A	10	MAN	C1

There are no planarity outliers.

5.2 Too-close contacts ⓘ

In the following table, the Non-H and H(model) columns list the number of non-hydrogen atoms and hydrogen atoms in the chain respectively. The H(added) column lists the number of hydrogen atoms added and optimized by MolProbity. The Clashes column lists the number of clashes within the asymmetric unit, whereas Symm-Clashes lists symmetry related clashes.

Mol	Chain	Non-H	H(model)	H(added)	Clashes	Symm-Clashes
1	A	2604	0	2519	24	0
2	A	28	0	25	1	0
3	A	61	0	52	0	0
4	A	72	0	61	4	0
5	A	13	0	7	1	0
6	A	5	0	0	0	0
7	A	2	0	0	0	0
8	A	1	0	0	0	0
9	A	4	0	0	0	0
10	A	3	0	6	3	0
11	A	259	0	0	0	0
All	All	3052	0	2670	30	0

The all-atom clashscore is defined as the number of clashes found per 1000 atoms (including hydrogen atoms). The all-atom clashscore for this structure is 5.

All (30) close contacts within the same asymmetric unit are listed below, sorted by their clash magnitude.

Atom-1	Atom-2	Interatomic distance (Å)	Clash overlap (Å)
1:A:565:LYS:HE3	1:A:567:GLU:HB2	1.37	1.02
1:A:565:LYS:HG3	1:A:567:GLU:H	1.32	0.92
4:A:10:MAN:H5	4:A:11:BMA:O2	1.85	0.76
1:A:448:TRP:HE1	1:A:477:GLN:HE22	1.34	0.75
1:A:626:PRO:HA	1:A:630:CYS:SG	2.32	0.69
1:A:660:TYR:HA	10:A:702:EOH:H11	1.76	0.67
1:A:565:LYS:HG3	1:A:567:GLU:N	2.09	0.63
2:A:1:NAG:H61	2:A:2:NAG:HN2	1.64	0.59
4:A:10:MAN:H3	4:A:11:BMA:O5	2.03	0.58
1:A:660:TYR:HA	10:A:702:EOH:C1	2.32	0.58
4:A:11:BMA:H3	4:A:12:BMA:O5	2.05	0.56
1:A:669:ILE:O	1:A:673:LYS:HG2	2.08	0.53
1:A:559:ASP:OD2	1:A:559:ASP:N	2.40	0.53
4:A:10:MAN:H5	4:A:11:BMA:C2	2.37	0.53
1:A:448:TRP:HE1	1:A:477:GLN:NE2	2.06	0.52
5:A:1202:AIN:H1	5:A:1202:AIN:H93	1.93	0.50

Continued on next page...

Continued from previous page...

Atom-1	Atom-2	Interatomic distance (Å)	Clash overlap (Å)
1:A:655:PRO:HG3	10:A:702:EOH:C1	2.42	0.48
1:A:471:MET:HE1	1:A:487:PHE:HE2	1.79	0.48
1:A:461:VAL:O	1:A:462:ASP:HB2	2.14	0.47
1:A:460:ALA:HB3	1:A:463:ARG:HD3	1.97	0.47
1:A:635:GLU:O	1:A:636:THR:HG22	2.14	0.46
1:A:520:LYS:HD2	1:A:520:LYS:HA	1.58	0.46
1:A:343:THR:O	1:A:343:THR:OG1	2.31	0.45
1:A:395:ASP:HA	1:A:595:HIS:CD2	2.51	0.45
1:A:603:ARG:NH1	1:A:606:HIS:ND1	2.67	0.43
1:A:652:GLY:C	1:A:654:ARG:H	2.17	0.43
1:A:636:THR:HG23	1:A:636:THR:O	2.20	0.41
1:A:514:LYS:HE2	1:A:514:LYS:HB2	1.90	0.41
1:A:565:LYS:CG	1:A:567:GLU:H	2.18	0.41
1:A:665:TYR:CZ	1:A:669:ILE:HD11	2.56	0.41

There are no symmetry-related clashes.

5.3 Torsion angles [i](#)

5.3.1 Protein backbone [i](#)

In the following table, the Percentiles column shows the percent Ramachandran outliers of the chain as a percentile score with respect to all X-ray entries followed by that with respect to entries of similar resolution.

The Analysed column shows the number of residues for which the backbone conformation was analysed, and the total number of residues.

Mol	Chain	Analysed	Favoured	Allowed	Outliers	Percentiles	
1	A	337/345 (98%)	320 (95%)	17 (5%)	0	100	100

There are no Ramachandran outliers to report.

5.3.2 Protein sidechains [i](#)

In the following table, the Percentiles column shows the percent sidechain outliers of the chain as a percentile score with respect to all X-ray entries followed by that with respect to entries of similar resolution.

The Analysed column shows the number of residues for which the sidechain conformation was analysed, and the total number of residues.

Mol	Chain	Analysed	Rotameric	Outliers	Percentiles
1	A	282/286 (99%)	276 (98%)	6 (2%)	61 63

All (6) residues with a non-rotameric sidechain are listed below:

Mol	Chain	Res	Type
1	A	343	THR
1	A	344	ARG
1	A	559	ASP
1	A	566	ARG
1	A	636	THR
1	A	654	ARG

Some sidechains can be flipped to improve hydrogen bonding and reduce clashes. There are no such sidechains identified.

5.3.3 RNA ⓘ

There are no RNA molecules in this entry.

5.4 Non-standard residues in protein, DNA, RNA chains ⓘ

There are no non-standard protein/DNA/RNA residues in this entry.

5.5 Carbohydrates ⓘ

13 carbohydrates are modelled in this entry.

In the following table, the Counts columns list the number of bonds (or angles) for which Mogul statistics could be retrieved, the number of bonds (or angles) that are observed in the model and the number of bonds (or angles) that are defined in the chemical component dictionary. The Link column lists molecule types, if any, to which the group is linked. The Z score for a bond length (or angle) is the number of standard deviations the observed value is removed from the expected value. A bond length (or angle) with $|Z| > 2$ is considered an outlier worth inspection. RMSZ is the root-mean-square of all Z scores of the bond lengths (or angles).

Mol	Type	Chain	Res	Link	Bond lengths			Bond angles		
					Counts	RMSZ	$\# Z > 2$	Counts	RMSZ	$\# Z > 2$
2	NAG	A	1	1,2	14,14,15	0.60	0	15,19,21	1.51	2 (13%)
4	MAN	A	10	4	11,11,12	0.52	0	14,15,17	1.62	2 (14%)
4	BMA	A	11	4	11,11,12	0.63	0	14,15,17	1.16	1 (7%)
4	BMA	A	12	4	11,11,12	0.69	0	14,15,17	1.57	2 (14%)

Mol	Type	Chain	Res	Link	Bond lengths			Bond angles		
					Counts	RMSZ	# Z > 2	Counts	RMSZ	# Z > 2
4	MAN	A	13	4	11,11,12	0.47	0	14,15,17	1.69	2 (14%)
2	NAG	A	2	2	14,14,15	0.54	0	15,19,21	0.92	0
3	NAG	A	3	1,3	14,14,15	0.66	0	15,19,21	1.04	1 (6%)
3	NDG	A	4	3	14,14,15	0.49	0	15,19,21	1.39	1 (6%)
3	MAN	A	5	3	11,11,12	0.82	0	14,15,17	2.33	6 (42%)
3	BMA	A	6	3	11,11,12	0.47	0	14,15,17	2.33	5 (35%)
3	MAN	A	7	3	11,11,12	0.96	0	14,15,17	2.72	3 (21%)
4	NAG	A	8	1,4	14,14,15	0.74	1 (7%)	15,19,21	1.21	1 (6%)
4	NAG	A	9	4	14,14,15	0.57	0	15,19,21	1.91	4 (26%)

In the following table, the Chirals column lists the number of chiral outliers, the number of chiral centers analysed, the number of these observed in the model and the number defined in the chemical component dictionary. Similar counts are reported in the Torsion and Rings columns. '-' means no outliers of that kind were identified.

Mol	Type	Chain	Res	Link	Chirals	Torsions	Rings
2	NAG	A	1	1,2	-	0/6/23/26	0/1/1/1
4	MAN	A	10	4	1/1/4/5	0/2/19/22	0/1/1/1
4	BMA	A	11	4	-	0/2/19/22	0/1/1/1
4	BMA	A	12	4	-	0/2/19/22	0/1/1/1
4	MAN	A	13	4	-	0/2/19/22	1/1/1/1
2	NAG	A	2	2	-	0/6/23/26	0/1/1/1
3	NAG	A	3	1,3	-	0/6/23/26	0/1/1/1
3	NDG	A	4	3	-	0/6/23/26	0/1/1/1
3	MAN	A	5	3	-	0/2/19/22	1/1/1/1
3	BMA	A	6	3	-	0/2/19/22	0/1/1/1
3	MAN	A	7	3	-	0/2/19/22	0/1/1/1
4	NAG	A	8	1,4	-	0/6/23/26	0/1/1/1
4	NAG	A	9	4	-	0/6/23/26	0/1/1/1

All (1) bond length outliers are listed below:

Mol	Chain	Res	Type	Atoms	Z	Observed(Å)	Ideal(Å)
4	A	8	NAG	C1-C2	2.27	1.55	1.52

All (30) bond angle outliers are listed below:

Mol	Chain	Res	Type	Atoms	Z	Observed(°)	Ideal(°)
3	A	6	BMA	O5-C1-C2	-4.20	104.05	110.86
3	A	6	BMA	C1-C2-C3	-3.52	105.38	109.54

Continued on next page...

Continued from previous page...

Mol	Chain	Res	Type	Atoms	Z	Observed(°)	Ideal(°)
3	A	5	MAN	O6-C6-C5	-3.46	99.89	111.33
3	A	3	NAG	C2-N2-C7	-2.90	119.31	123.04
4	A	12	BMA	C3-C4-C5	-2.61	105.64	110.20
4	A	9	NAG	C3-C4-C5	-2.43	105.97	110.20
4	A	9	NAG	C4-C3-C2	-2.36	107.55	111.23
3	A	7	MAN	O5-C5-C6	-2.23	102.53	107.35
4	A	9	NAG	O4-C4-C3	2.12	115.12	110.34
3	A	5	MAN	C1-C2-C3	2.31	112.27	109.54
4	A	13	MAN	O5-C5-C6	2.40	112.55	107.35
3	A	6	BMA	O2-C2-C1	2.45	114.11	109.21
4	A	11	BMA	C3-C4-C5	2.74	114.97	110.20
3	A	5	MAN	O5-C5-C6	2.88	113.59	107.35
2	A	1	NAG	C3-C4-C5	2.98	115.38	110.20
3	A	5	MAN	O4-C4-C5	3.36	118.13	109.24
4	A	10	MAN	C1-C2-C3	3.63	113.83	109.54
4	A	10	MAN	C1-O5-C5	3.67	116.91	112.25
2	A	1	NAG	C1-O5-C5	3.86	117.15	112.25
4	A	8	NAG	C1-O5-C5	3.87	117.16	112.25
3	A	5	MAN	O4-C4-C3	3.94	119.21	110.34
3	A	5	MAN	C1-O5-C5	4.05	117.39	112.25
3	A	6	BMA	C3-C4-C5	4.09	117.32	110.20
3	A	6	BMA	C1-O5-C5	4.11	117.46	112.25
3	A	4	NDG	C1-O-C5	4.38	117.81	112.25
4	A	12	BMA	C1-C2-C3	4.68	115.07	109.54
3	A	7	MAN	C1-O5-C5	4.68	118.19	112.25
4	A	13	MAN	C1-O5-C5	5.20	118.85	112.25
4	A	9	NAG	C1-O5-C5	5.55	119.29	112.25
3	A	7	MAN	C1-C2-C3	7.75	118.71	109.54

All (1) chirality outliers are listed below:

Mol	Chain	Res	Type	Atom
4	A	10	MAN	C1

There are no torsion outliers.

All (2) ring outliers are listed below:

Mol	Chain	Res	Type	Atoms
4	A	13	MAN	C1-C2-C3-C4-C5-O5
3	A	5	MAN	C1-C2-C3-C4-C5-O5

5 monomers are involved in 5 short contacts:

Mol	Chain	Res	Type	Clashes	Symm-Clashes
2	A	1	NAG	1	0
4	A	10	MAN	3	0
4	A	11	BMA	4	0
4	A	12	BMA	1	0
2	A	2	NAG	1	0

5.6 Ligand geometry

Of 7 ligands modelled in this entry, 3 are monoatomic - leaving 4 for Mogul analysis.

In the following table, the Counts columns list the number of bonds (or angles) for which Mogul statistics could be retrieved, the number of bonds (or angles) that are observed in the model and the number of bonds (or angles) that are defined in the chemical component dictionary. The Link column lists molecule types, if any, to which the group is linked. The Z score for a bond length (or angle) is the number of standard deviations the observed value is removed from the expected value. A bond length (or angle) with $|Z| > 2$ is considered an outlier worth inspection. RMSZ is the root-mean-square of all Z scores of the bond lengths (or angles).

Mol	Type	Chain	Res	Link	Bond lengths			Bond angles		
					Counts	RMSZ	$\# Z > 2$	Counts	RMSZ	$\# Z > 2$
6	SO4	A	1001	-	4,4,4	0.34	0	6,6,6	0.17	0
5	AIN	A	1202	-	10,13,13	1.99	2 (20%)	13,17,17	3.36	5 (38%)
9	CO3	A	688	8	0,3,3	0.00	-	0,3,3	0.00	-
10	EOH	A	702	-	2,2,2	0.43	0	1,1,1	0.13	0

In the following table, the Chirals column lists the number of chiral outliers, the number of chiral centers analysed, the number of these observed in the model and the number defined in the chemical component dictionary. Similar counts are reported in the Torsion and Rings columns. '-' means no outliers of that kind were identified.

Mol	Type	Chain	Res	Link	Chirals	Torsions	Rings
6	SO4	A	1001	-	-	0/0/0/0	0/0/0/0
5	AIN	A	1202	-	-	0/4/8/8	0/1/1/1
9	CO3	A	688	8	-	0/0/0/0	0/0/0/0
10	EOH	A	702	-	-	0/0/0/0	0/0/0/0

All (2) bond length outliers are listed below:

Mol	Chain	Res	Type	Atoms	Z	Observed(Å)	Ideal(Å)
5	A	1202	AIN	O3-C8	3.31	1.46	1.36
5	A	1202	AIN	C3-C2	4.99	1.48	1.40

All (5) bond angle outliers are listed below:

Mol	Chain	Res	Type	Atoms	Z	Observed(°)	Ideal(°)
5	A	1202	AIN	O3-C8-O4	-5.11	110.45	122.37
5	A	1202	AIN	O3-C2-C3	-3.49	112.34	118.55
5	A	1202	AIN	C4-C3-C2	2.44	120.58	117.36
5	A	1202	AIN	O3-C2-C1	3.97	129.02	118.77
5	A	1202	AIN	C2-O3-C8	8.75	137.83	117.55

There are no chirality outliers.

There are no torsion outliers.

There are no ring outliers.

2 monomers are involved in 4 short contacts:

Mol	Chain	Res	Type	Clashes	Symm-Clashes
5	A	1202	AIN	1	0
10	A	702	EOH	3	0

5.7 Other polymers [i](#)

There are no such residues in this entry.

5.8 Polymer linkage issues [i](#)

There are no chain breaks in this entry.

6 Fit of model and data ⓘ

6.1 Protein, DNA and RNA chains ⓘ

In the following table, the column labelled ‘#RSRZ> 2’ contains the number (and percentage) of RSRZ outliers, followed by percent RSRZ outliers for the chain as percentile scores relative to all X-ray entries and entries of similar resolution. The OWAB column contains the minimum, median, 95th percentile and maximum values of the occupancy-weighted average B-factor per residue. The column labelled ‘Q< 0.9’ lists the number of (and percentage) of residues with an average occupancy less than 0.9.

Mol	Chain	Analysed	<RSRZ>	#RSRZ>2	OWAB(Å ²)	Q<0.9
1	A	341/345 (98%)	0.08	21 (6%) 24 25	14, 26, 49, 71	0

All (21) RSRZ outliers are listed below:

Mol	Chain	Res	Type	RSRZ
1	A	342	TYR	10.8
1	A	681	LEU	10.3
1	A	419	LYS	7.1
1	A	682	GLU	6.9
1	A	420	HIS	5.9
1	A	422	SER	5.7
1	A	683	ALA	5.3
1	A	418	SER	4.9
1	A	684	CYS	4.7
1	A	421	SER	4.3
1	A	423	LEU	3.8
1	A	343	THR	3.2
1	A	685	ALA	3.0
1	A	636	THR	2.9
1	A	621	ASN	2.6
1	A	635	GLU	2.4
1	A	344	ARG	2.4
1	A	676	SER	2.4
1	A	417	SER	2.3
1	A	445	GLY	2.1
1	A	557	THR	2.1

6.2 Non-standard residues in protein, DNA, RNA chains ⓘ

There are no non-standard protein/DNA/RNA residues in this entry.

6.3 Carbohydrates ⓘ

In the following table, the Atoms column lists the number of modelled atoms in the group and the number defined in the chemical component dictionary. LLDF column lists the quality of electron density of the group with respect to its neighbouring residues in protein, DNA or RNA chains. The B-factors column lists the minimum, median, 95th percentile and maximum values of B factors of atoms in the group. The column labelled 'Q< 0.9' lists the number of atoms with occupancy less than 0.9.

Mol	Type	Chain	Res	Atoms	RSCC	RSR	LLDF	B-factors(Å ²)	Q<0.9
2	NAG	A	1	14/15	0.79	0.19	0.84	51,56,61,66	0
4	NAG	A	9	14/15	0.79	0.19	0.11	57,61,68,77	0
3	NAG	A	3	14/15	0.83	0.13	-0.04	42,50,55,61	0
4	NAG	A	8	14/15	0.93	0.09	-0.61	29,34,40,49	0
2	NAG	A	2	14/15	0.78	0.50	-	71,75,76,77	0
4	BMA	A	12	11/12	0.27	0.64	-	116,118,119,121	0
4	BMA	A	11	11/12	0.27	0.49	-	103,107,109,113	0
3	BMA	A	6	11/12	0.48	0.78	-	100,101,102,102	0
4	MAN	A	10	11/12	0.54	0.57	-	84,91,93,99	0
3	MAN	A	5	11/12	0.57	0.28	-	88,93,97,99	0
3	MAN	A	7	11/12	0.36	0.54	-	101,103,104,104	0
4	MAN	A	13	11/12	0.52	0.62	-	122,123,123,123	0
3	NDG	A	4	14/15	0.79	0.22	-	66,70,75,82	0

6.4 Ligands ⓘ

In the following table, the Atoms column lists the number of modelled atoms in the group and the number defined in the chemical component dictionary. LLDF column lists the quality of electron density of the group with respect to its neighbouring residues in protein, DNA or RNA chains. The B-factors column lists the minimum, median, 95th percentile and maximum values of B factors of atoms in the group. The column labelled 'Q< 0.9' lists the number of atoms with occupancy less than 0.9.

Mol	Type	Chain	Res	Atoms	RSCC	RSR	LLDF	B-factors(Å ²)	Q<0.9
9	CO3	A	688	4/4	0.98	0.10	1.08	18,19,20,21	0
8	FE	A	687	1/1	1.00	0.06	-2.36	18,18,18,18	0
7	ZN	A	788	1/1	0.99	0.02	-	29,29,29,29	0
5	AIN	A	1202	13/13	0.70	0.68	-	31,36,38,39	0
10	EOH	A	702	3/3	0.67	0.47	-	49,49,49,50	0
6	SO4	A	1001	5/5	0.97	0.17	-	61,62,62,63	0
7	ZN	A	787	1/1	1.00	0.04	-	25,25,25,25	0

6.5 Other polymers [i](#)

There are no such residues in this entry.