



Full wwPDB X-ray Structure Validation Report ⓘ

Feb 1, 2016 – 05:25 PM GMT

PDB ID : 4IAQ
Title : Crystal structure of the chimeric protein of 5-HT1B-BRIL in complex with dihydroergotamine (PSI Community Target)
Authors : Wang, C.; Jiang, Y.; Ma, J.; Wu, H.; Wacker, D.; Katritch, V.; Han, G.W.; Liu, W.; Huang, X.; Vardy, E.; McCorvy, J.D.; Gao, X.; Zhou, E.X.; Melcher, K.; Zhang, C.; Bai, F.; Yang, H.; Yang, L.; Jiang, H.; Roth, B.L.; Cherezov, V.; Stevens, R.C.; Xu, H.E.; GPCR Network (GPCR)
Deposited on : 2012-12-07
Resolution : 2.80 Å(reported)

This is a Full wwPDB X-ray Structure Validation Report for a publicly released PDB entry.

We welcome your comments at validation@mail.wwpdb.org

A user guide is available at

<http://wwpdb.org/validation/2016/XrayValidationReportHelp>

with specific help available everywhere you see the ⓘ symbol.

The following versions of software and data (see [references ⓘ](#)) were used in the production of this report:

MolProbity : 4.02b-467
Mogul : 1.7 (RC4), CSD as536be (2015)
Xtriage (Phenix) : 1.9-1692
EDS : rb-20026688
Percentile statistics : 20151230.v01 (using entries in the PDB archive December 30th 2015)
Refmac : 5.8.0135
CCP4 : 6.5.0
Ideal geometry (proteins) : Engh & Huber (2001)
Ideal geometry (DNA, RNA) : Parkinson et al. (1996)
Validation Pipeline (wwPDB-VP) : trunk26865

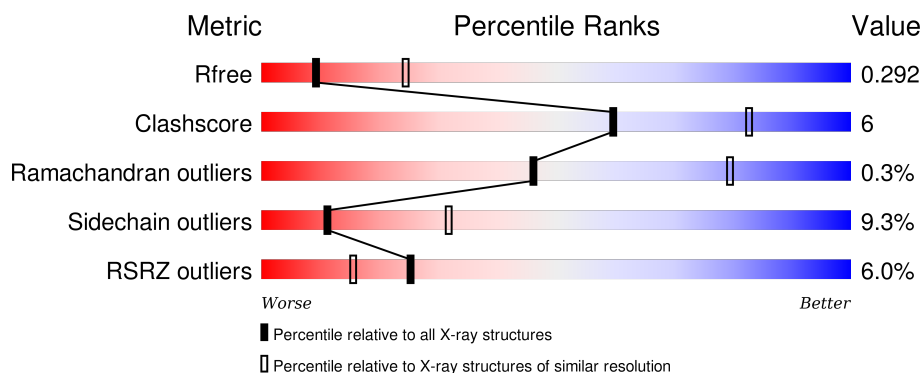
1 Overall quality at a glance

The following experimental techniques were used to determine the structure:

X-RAY DIFFRACTION

The reported resolution of this entry is 2.80 Å.

Percentile scores (ranging between 0-100) for global validation metrics of the entry are shown in the following graphic. The table shows the number of entries on which the scores are based.



Metric	Whole archive (#Entries)	Similar resolution (#Entries, resolution range(Å))
R_{free}	91344	2393 (2.80-2.80)
Clashscore	102246	2827 (2.80-2.80)
Ramachandran outliers	100387	2782 (2.80-2.80)
Sidechain outliers	100360	2784 (2.80-2.80)
RSRZ outliers	91569	2404 (2.80-2.80)

The table below summarises the geometric issues observed across the polymeric chains and their fit to the electron density. The red, orange, yellow and green segments on the lower bar indicate the fraction of residues that contain outliers for ≥ 3 , 2, 1 and 0 types of geometric quality criteria. A grey segment represents the fraction of residues that are not modelled. The numeric value for each fraction is indicated below the corresponding segment, with a dot representing fractions $\leq 5\%$. The upper red bar (where present) indicates the fraction of residues that have poor fit to the electron density. The numeric value is given above the bar.

Mol	Chain	Length	Quality of chain
1	A	403	<div> <div>5%</div> <div>75%</div> <div>14%</div> <div>9%</div> </div>

2 Entry composition [i](#)

There are 3 unique types of molecules in this entry. The entry contains 2800 atoms, of which 0 are hydrogens and 0 are deuteriums.

In the tables below, the ZeroOcc column contains the number of atoms modelled with zero occupancy, the AltConf column contains the number of residues with at least one atom in alternate conformation and the Trace column contains the number of residues modelled with at most 2 atoms.

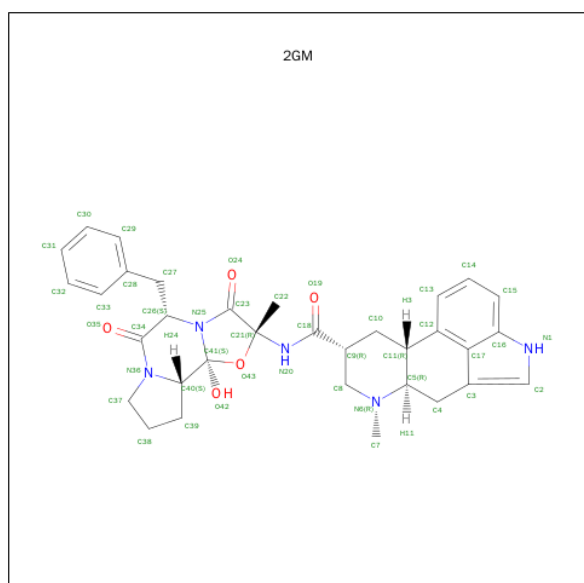
- Molecule 1 is a protein called Chimera protein of human 5-hydroxytryptamine receptor 1B and E. Coli soluble cytochrome b562.

Mol	Chain	Residues	Atoms					ZeroOcc	AltConf	Trace
			Total	C	N	O	S			
1	A	367	2752	1821	430	489	12	0	0	0

There are 7 discrepancies between the modelled and reference sequences:

Chain	Residue	Modelled	Actual	Comment	Reference
A	30	GLY	-	EXPRESSION TAG	UNP P28222
A	31	GLY	-	EXPRESSION TAG	UNP P28222
A	32	THR	-	EXPRESSION TAG	UNP P28222
A	138	TRP	LEU	engineered mutation	UNP P28222
A	1007	TRP	MET	engineered mutation	UNP P0ABE7
A	1102	ILE	HIS	engineered mutation	UNP P0ABE7
A	1106	LEU	ARG	engineered mutation	UNP P0ABE7

- Molecule 2 is DIHYDROERGOTAMINE (three-letter code: 2GM) (formula: C₃₃H₃₇N₅O₅).



Mol	Chain	Residues	Atoms				ZeroOcc	AltConf
2	A	1	Total	C	N	O	0	0
			43	33	5	5		

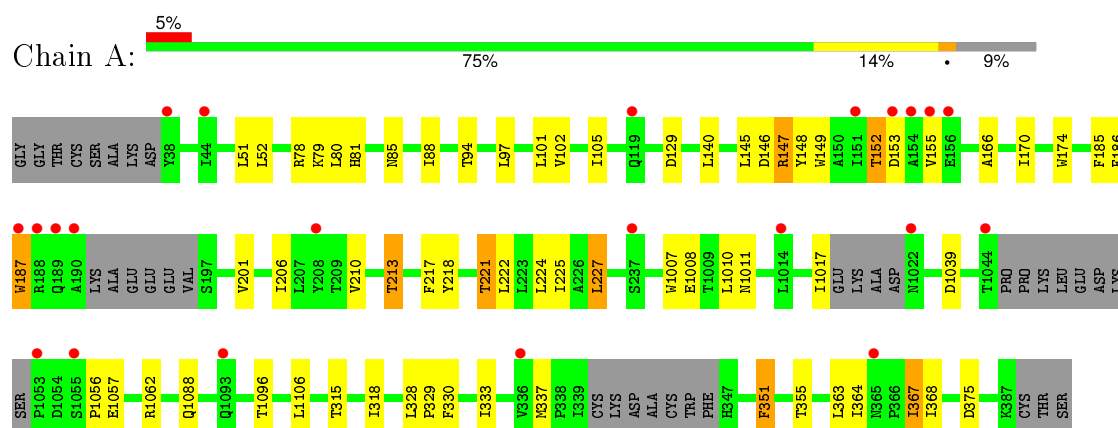
- Molecule 3 is water.

Mol	Chain	Residues	Atoms		ZeroOcc	AltConf
3	A	5	Total	O	0	0
			5	5		

3 Residue-property plots [i](#)

These plots are drawn for all protein, RNA and DNA chains in the entry. The first graphic for a chain summarises the proportions of errors displayed in the second graphic. The second graphic shows the sequence view annotated by issues in geometry and electron density. Residues are color-coded according to the number of geometric quality criteria for which they contain at least one outlier: green = 0, yellow = 1, orange = 2 and red = 3 or more. A red dot above a residue indicates a poor fit to the electron density ($RSRZ > 2$). Stretches of 2 or more consecutive residues without any outlier are shown as a green connector. Residues present in the sample, but not in the model, are shown in grey.

- Molecule 1: Chimera protein of human 5-hydroxytryptamine receptor 1B and E. Coli soluble cytochrome b562



4 Data and refinement statistics

Property	Value	Source
Space group	C 2 2 2	Depositor
Cell constants a, b, c, α , β , γ	84.74Å 192.58Å 74.34Å 90.00° 90.00° 90.00°	Depositor
Resolution (Å)	35.06 – 2.80 34.38 – 2.80	Depositor EDS
% Data completeness (in resolution range)	84.4 (35.06-2.80) 84.8 (34.38-2.80)	Depositor EDS
R_{merge}	0.14	Depositor
R_{sym}	(Not available)	Depositor
$\langle I/\sigma(I) \rangle$ ¹	3.87 (at 2.81Å)	Xtriage
Refinement program	BUSTER 2.10.0	Depositor
R, R_{free}	0.236 , 0.257 0.256 , 0.292	Depositor DCC
R_{free} test set	647 reflections (5.24%)	DCC
Wilson B-factor (Å ²)	79.2	Xtriage
Anisotropy	0.112	Xtriage
Bulk solvent k_{sol} (e/Å ³), B_{sol} (Å ²)	0.31 , 88.8	EDS
Estimated twinning fraction	No twinning to report.	Xtriage
L-test for twinning ²	$\langle L \rangle = 0.48$, $\langle L^2 \rangle = 0.32$	Xtriage
Outliers	3 of 12993 reflections (0.023%)	Xtriage
F_o, F_c correlation	0.93	EDS
Total number of atoms	2800	wwPDB-VP
Average B, all atoms (Å ²)	97.0	wwPDB-VP

Xtriage's analysis on translational NCS is as follows: *The largest off-origin peak in the Patterson function is 6.54% of the height of the origin peak. No significant pseudotranslation is detected.*

¹Intensities estimated from amplitudes.

²Theoretical values of $\langle |L| \rangle$, $\langle L^2 \rangle$ for acentric reflections are 0.5, 0.375 respectively for untwinned datasets, and 0.333, 0.2 for perfectly twinned datasets.

5 Model quality ⓘ

5.1 Standard geometry ⓘ

Bond lengths and bond angles in the following residue types are not validated in this section: 2GM

The Z score for a bond length (or angle) is the number of standard deviations the observed value is removed from the expected value. A bond length (or angle) with $|Z| > 5$ is considered an outlier worth inspection. RMSZ is the root-mean-square of all Z scores of the bond lengths (or angles).

Mol	Chain	Bond lengths		Bond angles	
		RMSZ	# Z >5	RMSZ	# Z >5
1	A	0.49	0/2818	0.65	0/3867

There are no bond length outliers.

There are no bond angle outliers.

There are no chirality outliers.

There are no planarity outliers.

5.2 Too-close contacts ⓘ

In the following table, the Non-H and H(model) columns list the number of non-hydrogen atoms and hydrogen atoms in the chain respectively. The H(added) column lists the number of hydrogen atoms added and optimized by MolProbity. The Clashes column lists the number of clashes within the asymmetric unit, whereas Symm-Clashes lists symmetry related clashes.

Mol	Chain	Non-H	H(model)	H(added)	Clashes	Symm-Clashes
1	A	2752	0	2651	31	0
2	A	43	0	37	3	0
3	A	5	0	0	0	0
All	All	2800	0	2688	31	0

The all-atom clashscore is defined as the number of clashes found per 1000 atoms (including hydrogen atoms). The all-atom clashscore for this structure is 6.

All (31) close contacts within the same asymmetric unit are listed below, sorted by their clash magnitude.

Atom-1	Atom-2	Interatomic distance (Å)	Clash overlap (Å)
1:A:145:LEU:HG	1:A:227:LEU:HD21	1.72	0.72

Continued on next page...

Continued from previous page...

Atom-1	Atom-2	Interatomic distance (Å)	Clash overlap (Å)
1:A:351:PHE:HB3	2:A:2001:2GM:H26	1.83	0.59
1:A:1007:TRP:CD1	1:A:1106:LEU:HD21	2.42	0.55
1:A:85:ASN:HA	1:A:88:ILE:HG12	1.89	0.55
1:A:318:ILE:HG22	1:A:368:ILE:HD12	1.91	0.53
1:A:217:PHE:O	1:A:221:THR:HG23	2.08	0.51
1:A:364:ILE:O	1:A:368:ILE:HG12	2.11	0.51
1:A:78:ARG:HA	1:A:81:HIS:HD2	1.75	0.51
1:A:147:ARG:HH11	1:A:147:ARG:HA	1.74	0.51
1:A:78:ARG:HA	1:A:81:HIS:CD2	2.49	0.48
1:A:222:LEU:HA	1:A:225:ILE:HD12	1.95	0.47
1:A:94:THR:HG22	1:A:174:TRP:CZ2	2.49	0.47
1:A:351:PHE:O	1:A:355:THR:HG23	2.14	0.47
1:A:185:PHE:HA	1:A:187:TRP:CD1	2.50	0.46
1:A:201:VAL:HB	2:A:2001:2GM:H37	1.97	0.45
1:A:97:LEU:O	1:A:101:LEU:HB2	2.16	0.45
1:A:213:THR:HG23	1:A:218:TYR:CE2	2.52	0.45
1:A:149:TRP:HA	1:A:152:THR:HG22	1.99	0.43
1:A:102:VAL:HG21	1:A:129:ASP:HA	2.01	0.43
1:A:217:PHE:CZ	1:A:328:LEU:HA	2.54	0.43
1:A:221:THR:HA	1:A:224:LEU:HD12	1.99	0.43
1:A:1017:ILE:HG23	1:A:1088:GLN:HG2	2.00	0.43
1:A:1056:PRO:O	1:A:1057:GLU:HB3	2.18	0.43
1:A:329:PRO:O	1:A:333:ILE:HG12	2.19	0.43
1:A:363:LEU:O	1:A:367:ILE:HG23	2.19	0.42
1:A:80:LEU:HD21	1:A:375:ASP:HB3	2.01	0.42
1:A:201:VAL:HB	2:A:2001:2GM:C32	2.50	0.41
1:A:330:PHE:CE1	1:A:355:THR:HG22	2.55	0.41
1:A:210:VAL:O	1:A:213:THR:HG22	2.21	0.41
1:A:148:TYR:O	1:A:152:THR:HB	2.21	0.41
1:A:166:ALA:O	1:A:170:ILE:HG12	2.21	0.40

There are no symmetry-related clashes.

5.3 Torsion angles ⓘ

5.3.1 Protein backbone ⓘ

In the following table, the Percentiles column shows the percent Ramachandran outliers of the chain as a percentile score with respect to all X-ray entries followed by that with respect to entries of similar resolution.

The Analysed column shows the number of residues for which the backbone conformation was analysed, and the total number of residues.

Mol	Chain	Analysed	Favoured	Allowed	Outliers	Percentiles	
1	A	357/403 (89%)	343 (96%)	13 (4%)	1 (0%)	46	79

All (1) Ramachandran outliers are listed below:

Mol	Chain	Res	Type
1	A	187	TRP

5.3.2 Protein sidechains ⓘ

In the following table, the Percentiles column shows the percent sidechain outliers of the chain as a percentile score with respect to all X-ray entries followed by that with respect to entries of similar resolution.

The Analysed column shows the number of residues for which the sidechain conformation was analysed, and the total number of residues.

Mol	Chain	Analysed	Rotameric	Outliers	Percentiles	
1	A	269/346 (78%)	244 (91%)	25 (9%)	11	32

All (25) residues with a non-rotameric sidechain are listed below:

Mol	Chain	Res	Type
1	A	51	LEU
1	A	52	LEU
1	A	79	LYS
1	A	105	ILE
1	A	140	LEU
1	A	146	ASP
1	A	147	ARG
1	A	152	THR
1	A	153	ASP
1	A	155	VAL
1	A	186	PHE
1	A	206	ILE
1	A	213	THR
1	A	221	THR
1	A	227	LEU
1	A	1008	GLU
1	A	1010	LEU
1	A	1011	ASN

Continued on next page...

Continued from previous page...

Mol	Chain	Res	Type
1	A	1039	ASP
1	A	1062	ARG
1	A	1096	THR
1	A	315	THR
1	A	337	MET
1	A	351	PHE
1	A	367	ILE

Some sidechains can be flipped to improve hydrogen bonding and reduce clashes. All (1) such sidechains are listed below:

Mol	Chain	Res	Type
1	A	81	HIS

5.3.3 RNA [i](#)

There are no RNA molecules in this entry.

5.4 Non-standard residues in protein, DNA, RNA chains [i](#)

There are no non-standard protein/DNA/RNA residues in this entry.

5.5 Carbohydrates [i](#)

There are no carbohydrates in this entry.

5.6 Ligand geometry [i](#)

1 ligand is modelled in this entry.

In the following table, the Counts columns list the number of bonds (or angles) for which Mogul statistics could be retrieved, the number of bonds (or angles) that are observed in the model and the number of bonds (or angles) that are defined in the chemical component dictionary. The Link column lists molecule types, if any, to which the group is linked. The Z score for a bond length (or angle) is the number of standard deviations the observed value is removed from the expected value. A bond length (or angle) with $|Z| > 2$ is considered an outlier worth inspection. RMSZ is the root-mean-square of all Z scores of the bond lengths (or angles).

Mol	Type	Chain	Res	Link	Bond lengths			Bond angles		
					Counts	RMSZ	$\# Z > 2$	Counts	RMSZ	$\# Z > 2$
2	2GM	A	2001	-	47,50,50	2.59	17 (36%)	55,79,79	2.31	18 (32%)

In the following table, the Chirals column lists the number of chiral outliers, the number of chiral centers analysed, the number of these observed in the model and the number defined in the chemical component dictionary. Similar counts are reported in the Torsion and Rings columns. '-' means no outliers of that kind were identified.

Mol	Type	Chain	Res	Link	Chirals	Torsions	Rings
2	2GM	A	2001	-	-	0/13/87/87	0/8/8/8

All (17) bond length outliers are listed below:

Mol	Chain	Res	Type	Atoms	Z	Observed(Å)	Ideal(Å)
2	A	2001	2GM	C40-N36	-8.16	1.36	1.47
2	A	2001	2GM	C41-N25	-4.44	1.40	1.45
2	A	2001	2GM	C12-C17	-3.74	1.36	1.43
2	A	2001	2GM	C15-C16	-2.72	1.36	1.41
2	A	2001	2GM	C14-C15	2.00	1.41	1.36
2	A	2001	2GM	C39-C40	2.15	1.57	1.53
2	A	2001	2GM	C38-C39	2.44	1.61	1.51
2	A	2001	2GM	C41-C40	2.66	1.55	1.52
2	A	2001	2GM	C26-N25	2.85	1.51	1.47
2	A	2001	2GM	C14-C13	3.02	1.45	1.38
2	A	2001	2GM	C8-N6	3.06	1.51	1.47
2	A	2001	2GM	C13-C12	3.52	1.44	1.37
2	A	2001	2GM	C5-N6	3.77	1.55	1.48
2	A	2001	2GM	O43-C41	4.02	1.50	1.42
2	A	2001	2GM	C34-N36	4.69	1.45	1.34
2	A	2001	2GM	O43-C21	5.45	1.53	1.44
2	A	2001	2GM	C18-N20	6.71	1.48	1.34

All (18) bond angle outliers are listed below:

Mol	Chain	Res	Type	Atoms	Z	Observed(°)	Ideal(°)
2	A	2001	2GM	C34-C26-N25	-3.71	107.91	111.72
2	A	2001	2GM	C7-N6-C8	-2.87	104.60	109.50
2	A	2001	2GM	O42-C41-N25	-2.84	110.78	113.17
2	A	2001	2GM	C13-C12-C17	-2.68	116.37	119.05
2	A	2001	2GM	C38-C39-C40	-2.62	99.51	104.01
2	A	2001	2GM	O24-C23-C21	-2.31	123.12	125.59
2	A	2001	2GM	C4-C5-C11	-2.21	110.03	112.61
2	A	2001	2GM	C13-C12-C11	2.18	126.87	121.74
2	A	2001	2GM	C26-C34-N36	2.30	122.43	116.01
2	A	2001	2GM	C10-C11-C12	3.03	117.62	113.24
2	A	2001	2GM	C7-N6-C5	3.25	115.89	112.54
2	A	2001	2GM	C10-C11-C5	3.34	115.68	110.74

Continued on next page...

Continued from previous page...

Mol	Chain	Res	Type	Atoms	Z	Observed(°)	Ideal(°)
2	A	2001	2GM	C39-C40-C41	3.69	121.69	117.70
2	A	2001	2GM	C41-C40-N36	4.22	114.70	109.13
2	A	2001	2GM	C10-C9-C8	4.26	113.81	109.63
2	A	2001	2GM	C11-C5-N6	5.10	115.53	108.84
2	A	2001	2GM	C40-C41-N25	6.05	113.98	107.95
2	A	2001	2GM	C9-C8-N6	6.32	117.62	110.77

There are no chirality outliers.

There are no torsion outliers.

There are no ring outliers.

1 monomer is involved in 3 short contacts:

Mol	Chain	Res	Type	Clashes	Symm-Clashes
2	A	2001	2GM	3	0

5.7 Other polymers [i](#)

There are no such residues in this entry.

5.8 Polymer linkage issues [i](#)

There are no chain breaks in this entry.

6 Fit of model and data [i](#)

6.1 Protein, DNA and RNA chains [i](#)

In the following table, the column labelled ‘#RSRZ> 2’ contains the number (and percentage) of RSRZ outliers, followed by percent RSRZ outliers for the chain as percentile scores relative to all X-ray entries and entries of similar resolution. The OWAB column contains the minimum, median, 95th percentile and maximum values of the occupancy-weighted average B-factor per residue. The column labelled ‘Q< 0.9’ lists the number of (and percentage) of residues with an average occupancy less than 0.9.

Mol	Chain	Analysed	<RSRZ>	#RSRZ>2	OWAB(Å ²)	Q<0.9
1	A	367/403 (91%)	0.32	22 (5%) 25 15	62, 91, 154, 194	0

All (22) RSRZ outliers are listed below:

Mol	Chain	Res	Type	RSRZ
1	A	1053	PRO	7.5
1	A	187	TRP	5.7
1	A	190	ALA	5.0
1	A	155	VAL	4.4
1	A	189	GLN	4.1
1	A	154	ALA	4.0
1	A	119	GLN	4.0
1	A	188	ARG	3.6
1	A	1093	GLN	3.2
1	A	336	VAL	3.1
1	A	153	ASP	3.0
1	A	151	ILE	3.0
1	A	38	TYR	2.9
1	A	237	SER	2.7
1	A	1055	SER	2.6
1	A	156	GLU	2.6
1	A	1022	ASN	2.5
1	A	208	TYR	2.5
1	A	1014	LEU	2.4
1	A	365	ASN	2.3
1	A	44	ILE	2.2
1	A	1044	THR	2.2

6.2 Non-standard residues in protein, DNA, RNA chains [i](#)

There are no non-standard protein/DNA/RNA residues in this entry.

6.3 Carbohydrates [i](#)

There are no carbohydrates in this entry.

6.4 Ligands [i](#)

In the following table, the Atoms column lists the number of modelled atoms in the group and the number defined in the chemical component dictionary. LLDF column lists the quality of electron density of the group with respect to its neighbouring residues in protein, DNA or RNA chains. The B-factors column lists the minimum, median, 95th percentile and maximum values of B factors of atoms in the group. The column labelled 'Q< 0.9' lists the number of atoms with occupancy less than 0.9.

Mol	Type	Chain	Res	Atoms	RSCC	RSR	LLDF	B-factors(\AA^2)	Q<0.9
2	2GM	A	2001	43/43	0.91	0.21	0.12	62,77,82,83	0

6.5 Other polymers [i](#)

There are no such residues in this entry.