



# Full wwPDB X-ray Structure Validation Report ⓘ

Feb 1, 2016 – 02:43 AM GMT

PDB ID : 2IBW  
Title : Crystallographic and kinetic studies of human mitochondrial acetoacetyl-CoA thiolase (T2): the importance of potassium and chloride for its structure and function  
Authors : Haapalainen, A.M.; Wierenga, R.K.  
Deposited on : 2006-09-12  
Resolution : 1.90 Å(reported)

This is a Full wwPDB X-ray Structure Validation Report for a publicly released PDB entry.  
We welcome your comments at [validation@mail.wwpdb.org](mailto:validation@mail.wwpdb.org)  
A user guide is available at  
<http://wwpdb.org/validation/2016/XrayValidationReportHelp>  
with specific help available everywhere you see the ⓘ symbol.

---

The following versions of software and data (see [references ⓘ](#)) were used in the production of this report:

MolProbity : 4.02b-467  
Mogul : 1.7 (RC4), CSD as536be (2015)  
Xtriage (Phenix) : 1.9-1692  
EDS : rb-20026688  
Percentile statistics : 20151230.v01 (using entries in the PDB archive December 30th 2015)  
Refmac : 5.8.0135  
CCP4 : 6.5.0  
Ideal geometry (proteins) : Engh & Huber (2001)  
Ideal geometry (DNA, RNA) : Parkinson et al. (1996)  
Validation Pipeline (wwPDB-VP) : trunk26865

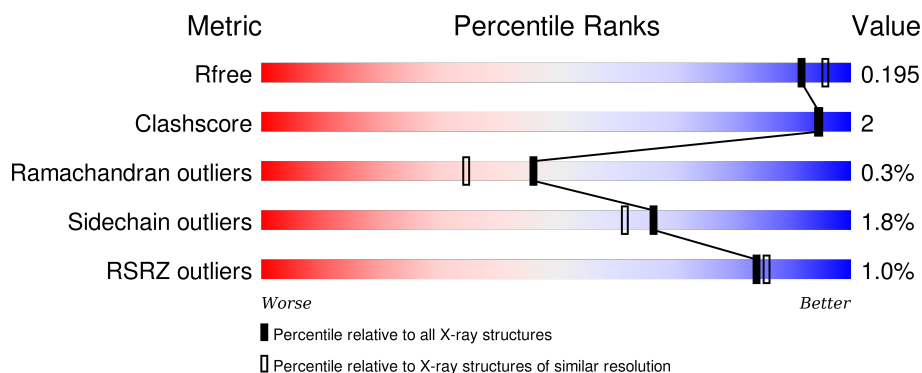
# 1 Overall quality at a glance

The following experimental techniques were used to determine the structure:

## *X-RAY DIFFRACTION*

The reported resolution of this entry is 1.90 Å.

Percentile scores (ranging between 0-100) for global validation metrics of the entry are shown in the following graphic. The table shows the number of entries on which the scores are based.



Metric	Whole archive (#Entries)	Similar resolution (#Entries, resolution range(Å))
$R_{free}$	91344	4755 (1.90-1.90)
Clashscore	102246	5398 (1.90-1.90)
Ramachandran outliers	100387	5338 (1.90-1.90)
Sidechain outliers	100360	5339 (1.90-1.90)
RSRZ outliers	91569	4766 (1.90-1.90)

The table below summarises the geometric issues observed across the polymeric chains and their fit to the electron density. The red, orange, yellow and green segments on the lower bar indicate the fraction of residues that contain outliers for  $\geq 3$ , 2, 1 and 0 types of geometric quality criteria. A grey segment represents the fraction of residues that are not modelled. The numeric value for each fraction is indicated below the corresponding segment, with a dot representing fractions  $\leq 5\%$ . The upper red bar (where present) indicates the fraction of residues that have poor fit to the electron density. The numeric value is given above the bar.

Mol	Chain	Length	Quality of chain
1	A	395	<div> <div></div> <div>94%5% .</div> </div>
1	B	395	<div> <div>%</div> <div>94%. .</div> </div>
1	C	395	<div> <div>3%</div> <div>93%6% ..</div> </div>
1	D	395	<div> <div>%</div> <div>96%. .</div> </div>

The following table lists non-polymeric compounds, carbohydrate monomers and non-standard

residues in protein, DNA, RNA chains that are outliers for geometric or electron-density-fit criteria:

Mol	Type	Chain	Res	Chirality	Geometry	Clashes	Electron density
4	COA	A	6001	-	-	-	X
4	COA	B	6002	-	-	-	X
4	COA	D	6004	-	-	-	X
6	GOL	A	4001	-	-	-	X

## 2 Entry composition [i](#)

There are 7 unique types of molecules in this entry. The entry contains 12953 atoms, of which 0 are hydrogens and 0 are deuteriums.

In the tables below, the ZeroOcc column contains the number of atoms modelled with zero occupancy, the AltConf column contains the number of residues with at least one atom in alternate conformation and the Trace column contains the number of residues modelled with at most 2 atoms.

- Molecule 1 is a protein called Acetyl-CoA acetyltransferase.

Mol	Chain	Residues	Atoms					ZeroOcc	AltConf	Trace
1	A	391	Total	C	N	O	S	0	12	0
			2914	1843	492	558	21			
1	B	391	Total	C	N	O	S	0	12	0
			2916	1848	492	555	21			
1	C	393	Total	C	N	O	S	0	5	0
			2906	1834	494	557	21			
1	D	393	Total	C	N	O	S	0	3	0
			2899	1829	494	555	21			

There are 12 discrepancies between the modelled and reference sequences:

Chain	Residue	Modelled	Actual	Comment	Reference
A	33	MET	-	INITIATING METHIONINE	UNP P24752
A	34	ALA	VAL	ENGINEERED	UNP P24752
A	126	CSO	CYS	MODIFIED RESIDUE	UNP P24752
B	33	MET	-	INITIATING METHIONINE	UNP P24752
B	34	ALA	VAL	ENGINEERED	UNP P24752
B	126	CSO	CYS	MODIFIED RESIDUE	UNP P24752
C	33	MET	-	INITIATING METHIONINE	UNP P24752
C	34	ALA	VAL	ENGINEERED	UNP P24752
C	126	CSO	CYS	MODIFIED RESIDUE	UNP P24752
D	33	MET	-	INITIATING METHIONINE	UNP P24752
D	34	ALA	VAL	ENGINEERED	UNP P24752
D	126	CSO	CYS	MODIFIED RESIDUE	UNP P24752

- Molecule 2 is CHLORIDE ION (three-letter code: CL) (formula: Cl).

Mol	Chain	Residues	Atoms		ZeroOcc	AltConf
2	B	1	Total	Cl	0	0
			1	1		
2	A	1	Total	Cl	0	0
			1	1		

*Continued on next page...*

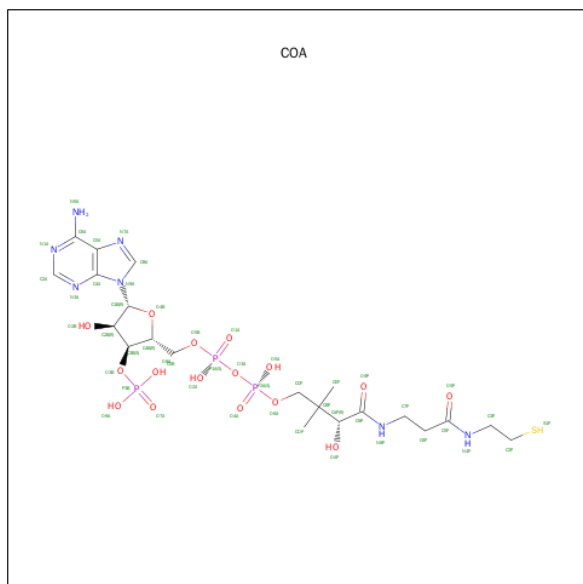
*Continued from previous page...*

Mol	Chain	Residues	Atoms		ZeroOcc	AltConf
2	D	1	Total	Cl	0	0
			1	1		
2	C	1	Total	Cl	0	0
			1	1		

- Molecule 3 is POTASSIUM ION (three-letter code: K) (formula: K).

Mol	Chain	Residues	Atoms		ZeroOcc	AltConf
3	B	1	Total	K	0	0
			1	1		
3	A	1	Total	K	0	0
			1	1		
3	D	1	Total	K	0	0
			1	1		
3	C	1	Total	K	0	0
			1	1		

- Molecule 4 is COENZYME A (three-letter code: COA) (formula: C<sub>21</sub>H<sub>36</sub>N<sub>7</sub>O<sub>16</sub>P<sub>3</sub>S).



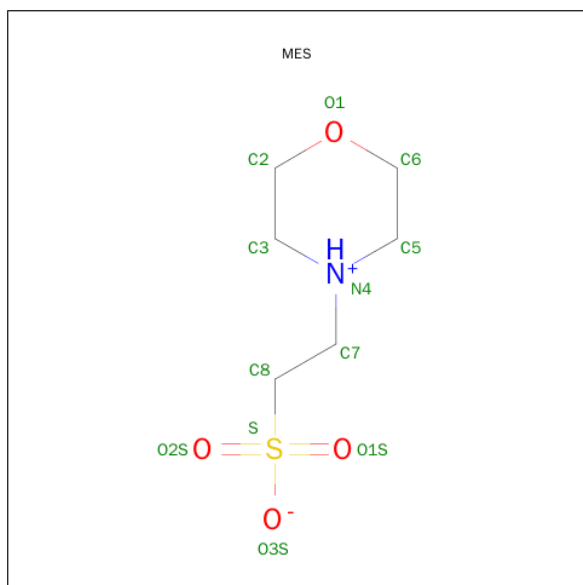
Mol	Chain	Residues	Atoms						ZeroOcc	AltConf
4	A	1	Total 48	C 21	N 7	O 16	P 3	S 1	0	0
4	B	1	Total 48	C 21	N 7	O 16	P 3	S 1	0	0
4	C	1	Total 48	C 21	N 7	O 16	P 3	S 1	0	0

*Continued on next page...*

Continued from previous page...

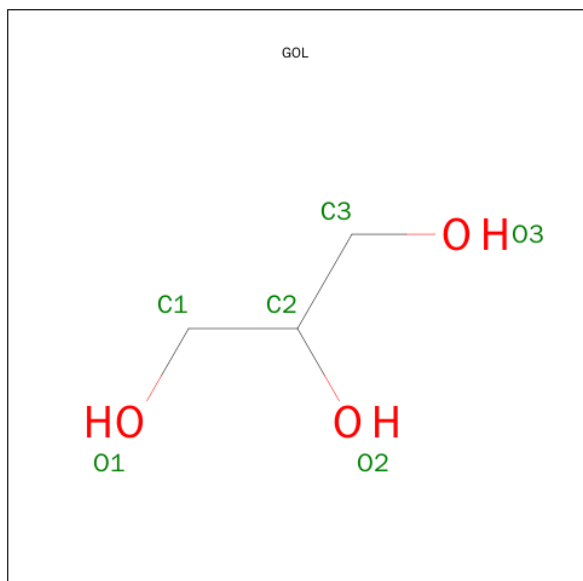
Mol	Chain	Residues	Atoms					ZeroOcc	AltConf
4	D	1	Total	C	N	O	P	S	
			48	21	7	16	3	1	

- Molecule 5 is 2-(N-MORPHOLINO)-ETHANESULFONIC ACID (three-letter code: MES) (formula:  $C_6H_{13}NO_4S$ ).



Mol	Chain	Residues	Atoms					ZeroOcc	AltConf
5	A	1	Total	C	N	O	S		
			12	6	1	4	1		

- Molecule 6 is GLYCEROL (three-letter code: GOL) (formula:  $C_3H_8O_3$ ).



Mol	Chain	Residues	Atoms			ZeroOcc	AltConf
6	A	1	Total	C	O	0	0
			6	3	3		

- Molecule 7 is water.

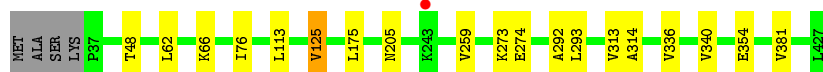
Mol	Chain	Residues	Atoms		ZeroOcc	AltConf
7	A	369	Total	O	0	0
			369	369		
7	B	326	Total	O	0	0
			326	326		
7	C	193	Total	O	0	0
			193	193		
7	D	212	Total	O	0	0
			212	212		

### 3 Residue-property plots [i](#)

These plots are drawn for all protein, RNA and DNA chains in the entry. The first graphic for a chain summarises the proportions of errors displayed in the second graphic. The second graphic shows the sequence view annotated by issues in geometry and electron density. Residues are color-coded according to the number of geometric quality criteria for which they contain at least one outlier: green = 0, yellow = 1, orange = 2 and red = 3 or more. A red dot above a residue indicates a poor fit to the electron density ( $RSRZ > 2$ ). Stretches of 2 or more consecutive residues without any outlier are shown as a green connector. Residues present in the sample, but not in the model, are shown in grey.

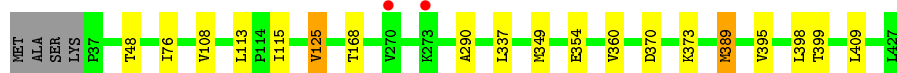
- Molecule 1: Acetyl-CoA acetyltransferase

Chain A: 



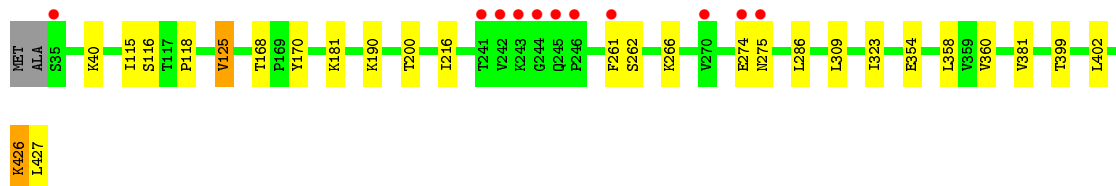
- Molecule 1: Acetyl-CoA acetyltransferase

Chain B: 



- Molecule 1: Acetyl-CoA acetyltransferase

Chain C: 



- Molecule 1: Acetyl-CoA acetyltransferase

Chain D: 





## 4 Data and refinement statistics

Property	Value	Source
Space group	P 1 21 1	Depositor
Cell constants a, b, c, $\alpha$ , $\beta$ , $\gamma$	76.14Å 107.58Å 101.95Å 90.00° 102.89° 90.00°	Depositor
Resolution (Å)	48.22 – 1.90 48.24 – 1.90	Depositor EDS
% Data completeness (in resolution range)	100.0 (48.22-1.90) 100.0 (48.24-1.90)	Depositor EDS
$R_{merge}$	0.08	Depositor
$R_{sym}$	0.08	Depositor
$\langle I/\sigma(I) \rangle$ <sup>1</sup>	3.88 (at 1.90Å)	Xtriage
Refinement program	REFMAC 5.2.0019	Depositor
R, $R_{free}$	0.153 , 0.195 0.154 , 0.195	Depositor DCC
$R_{free}$ test set	6292 reflections (5.26%)	DCC
Wilson B-factor (Å <sup>2</sup> )	15.7	Xtriage
Anisotropy	0.062	Xtriage
Bulk solvent $k_{sol}$ (e/Å <sup>3</sup> ), $B_{sol}$ (Å <sup>2</sup> )	0.34 , 62.5	EDS
Estimated twinning fraction	No twinning to report.	Xtriage
L-test for twinning <sup>2</sup>	$\langle  L  \rangle = 0.47$ , $\langle L^2 \rangle = 0.30$	Xtriage
Outliers	0 of 125844 reflections	Xtriage
$F_o, F_c$ correlation	0.96	EDS
Total number of atoms	12953	wwPDB-VP
Average B, all atoms (Å <sup>2</sup> )	19.0	wwPDB-VP

Xtriage's analysis on translational NCS is as follows: *The largest off-origin peak in the Patterson function is 3.17% of the height of the origin peak. No significant pseudotranslation is detected.*

<sup>1</sup>Intensities estimated from amplitudes.

<sup>2</sup>Theoretical values of  $\langle |L| \rangle$ ,  $\langle L^2 \rangle$  for acentric reflections are 0.5, 0.375 respectively for untwinned datasets, and 0.333, 0.2 for perfectly twinned datasets.

## 5 Model quality [i](#)

### 5.1 Standard geometry [i](#)

Bond lengths and bond angles in the following residue types are not validated in this section: GOL, CSO, CL, K, COA, MES

The Z score for a bond length (or angle) is the number of standard deviations the observed value is removed from the expected value. A bond length (or angle) with  $|Z| > 5$  is considered an outlier worth inspection. RMSZ is the root-mean-square of all Z scores of the bond lengths (or angles).

Mol	Chain	Bond lengths		Bond angles	
		RMSZ	$\# Z  > 5$	RMSZ	$\# Z  > 5$
1	A	0.63	0/2998	0.62	0/4058
1	B	0.60	0/2998	0.61	0/4059
1	C	0.47	0/2960	0.57	0/4005
1	D	0.51	0/2945	0.57	0/3985
All	All	0.56	0/11901	0.59	0/16107

There are no bond length outliers.

There are no bond angle outliers.

There are no chirality outliers.

There are no planarity outliers.

### 5.2 Too-close contacts [i](#)

In the following table, the Non-H and H(model) columns list the number of non-hydrogen atoms and hydrogen atoms in the chain respectively. The H(added) column lists the number of hydrogen atoms added and optimized by MolProbity. The Clashes column lists the number of clashes within the asymmetric unit, whereas Symm-Clashes lists symmetry related clashes.

Mol	Chain	Non-H	H(model)	H(added)	Clashes	Symm-Clashes
1	A	2914	0	3011	9	0
1	B	2916	0	3024	10	0
1	C	2906	0	3000	11	0
1	D	2899	0	2989	8	0
2	A	1	0	0	0	0
2	B	1	0	0	0	0
2	C	1	0	0	0	0
2	D	1	0	0	0	0
3	A	1	0	0	0	0

*Continued on next page...*

*Continued from previous page...*

Mol	Chain	Non-H	H(model)	H(added)	Clashes	Symm-Clashes
3	B	1	0	0	0	0
3	C	1	0	0	0	0
3	D	1	0	0	0	0
4	A	48	0	32	3	0
4	B	48	0	32	1	0
4	C	48	0	32	0	0
4	D	48	0	32	1	0
5	A	12	0	12	3	0
6	A	6	0	8	0	0
7	A	369	0	0	4	0
7	B	326	0	0	2	0
7	C	193	0	0	0	0
7	D	212	0	0	0	0
All	All	12953	0	12172	40	0

The all-atom clashscore is defined as the number of clashes found per 1000 atoms (including hydrogen atoms). The all-atom clashscore for this structure is 2.

All (40) close contacts within the same asymmetric unit are listed below, sorted by their clash magnitude.

Atom-1	Atom-2	Interatomic distance (Å)	Clash overlap (Å)
1:B:76:ILE:HD13	1:B:113[B]:LEU:HD21	1.67	0.77
1:A:48[A]:THR:HG22	7:A:6124:HOH:O	1.93	0.69
1:B:395:VAL:O	1:B:399[B]:THR:HG23	1.94	0.67
1:B:48[A]:THR:HG22	7:B:6300:HOH:O	1.97	0.64
1:B:349:MET:HG3	1:B:398:LEU:CD2	2.32	0.60
4:A:6001:COA:H52A	7:A:6337:HOH:O	2.03	0.57
1:C:216:ILE:HG23	1:C:261:PHE:CE2	2.40	0.57
1:B:76:ILE:CD1	1:B:113[B]:LEU:HD21	2.35	0.56
1:A:354:GLU:HB3	1:A:381:VAL:HG23	1.88	0.55
1:A:205:ASN:ND2	7:A:6279:HOH:O	2.34	0.55
1:C:354:GLU:HB3	1:C:381:VAL:HG23	1.87	0.55
1:C:40:LYS:HD3	1:D:37:PRO:HD3	1.91	0.52
1:C:354:GLU:HG2	1:C:360:VAL:HG21	1.92	0.51
5:A:5001:MES:H81	1:C:170:TYR:HB2	1.93	0.50
1:A:76:ILE:CD1	1:A:113:LEU:HD11	2.42	0.49
1:C:402:LEU:HB2	1:C:426:LYS:HG3	1.93	0.49
1:B:108:VAL:HG13	1:B:113[B]:LEU:HD12	1.94	0.48
1:C:399:THR:O	1:C:426:LYS:HE3	2.13	0.47
1:A:259:VAL:HG23	4:A:6001:COA:H61A	1.79	0.47
1:B:370:ASP:HB3	1:B:373[B]:LYS:HG3	1.98	0.46

*Continued on next page...*

Continued from previous page...

Atom-1	Atom-2	Interatomic distance (Å)	Clash overlap (Å)
1:D:212:ASP:O	1:D:216:ILE:HG12	2.15	0.46
1:C:116:SER:O	1:C:118:PRO:HD3	2.16	0.46
1:D:372:GLN:O	1:D:376:ILE:HD11	2.17	0.45
1:A:62[A]:LEU:HD12	1:A:66:LYS:HG2	1.99	0.45
4:A:6001:COA:H122	5:A:5001:MES:H61	1.99	0.45
1:D:72:ILE:O	1:D:76:ILE:HG12	2.17	0.45
1:C:262:SER:O	1:C:266:LYS:HE2	2.18	0.44
1:D:259:VAL:HG23	4:D:6004:COA:H61A	1.82	0.44
1:D:354:GLU:HB3	1:D:381:VAL:HG23	2.00	0.44
5:A:5001:MES:H21	7:A:6073:HOH:O	2.18	0.43
1:C:200:THR:HB	1:C:358:LEU:HD11	2.00	0.43
4:B:6002:COA:H52A	7:B:6166:HOH:O	2.19	0.42
1:B:354:GLU:HG2	1:B:360:VAL:HG21	2.01	0.42
1:A:313:VAL:HG12	1:A:340:VAL:HG11	2.02	0.41
1:B:337[A]:LEU:CD1	1:B:409:LEU:CD1	2.99	0.41
1:A:314:ALA:HB3	1:A:336[A]:VAL:HG13	2.01	0.41
1:D:372:GLN:O	1:D:376:ILE:CD1	2.69	0.41
1:C:181[B]:LYS:HE3	1:D:98:GLY:O	2.21	0.41
1:B:290:ALA:HA	1:B:389:MET:HG3	2.03	0.41
1:A:292:ALA:C	1:A:293:LEU:HD12	2.42	0.40

There are no symmetry-related clashes.

## 5.3 Torsion angles ⓘ

### 5.3.1 Protein backbone ⓘ

In the following table, the Percentiles column shows the percent Ramachandran outliers of the chain as a percentile score with respect to all X-ray entries followed by that with respect to entries of similar resolution.

The Analysed column shows the number of residues for which the backbone conformation was analysed, and the total number of residues.

Mol	Chain	Analysed	Favoured	Allowed	Outliers	Percentiles	
1	A	400/395 (101%)	395 (99%)	4 (1%)	1 (0%)	46	35
1	B	400/395 (101%)	392 (98%)	7 (2%)	1 (0%)	46	35
1	C	395/395 (100%)	386 (98%)	8 (2%)	1 (0%)	46	35
1	D	393/395 (100%)	385 (98%)	7 (2%)	1 (0%)	46	35
All	All	1588/1580 (100%)	1558 (98%)	26 (2%)	4 (0%)	46	35

All (4) Ramachandran outliers are listed below:

Mol	Chain	Res	Type
1	A	125	VAL
1	B	125	VAL
1	C	125	VAL
1	D	125	VAL

### 5.3.2 Protein sidechains ⓘ

In the following table, the Percentiles column shows the percent sidechain outliers of the chain as a percentile score with respect to all X-ray entries followed by that with respect to entries of similar resolution.

The Analysed column shows the number of residues for which the sidechain conformation was analysed, and the total number of residues.

Mol	Chain	Analysed	Rotameric	Outliers	Percentiles	
1	A	317/308 (103%)	313 (99%)	4 (1%)	76	73
1	B	317/308 (103%)	312 (98%)	5 (2%)	70	66
1	C	312/308 (101%)	300 (96%)	12 (4%)	40	28
1	D	310/308 (101%)	307 (99%)	3 (1%)	82	81
All	All	1256/1232 (102%)	1232 (98%)	24 (2%)	66	59

All (24) residues with a non-rotameric sidechain are listed below:

Mol	Chain	Res	Type
1	A	125	VAL
1	A	175	LEU
1	A	273	LYS
1	A	274	GLU
1	B	115	ILE
1	B	125	VAL
1	B	168[A]	THR
1	B	168[B]	THR
1	B	389	MET
1	C	115	ILE
1	C	125	VAL
1	C	168[A]	THR
1	C	168[B]	THR
1	C	190	LYS
1	C	274	GLU
1	C	275	ASN

*Continued on next page...*

*Continued from previous page...*

Mol	Chain	Res	Type
1	C	286	LEU
1	C	309	LEU
1	C	323	ILE
1	C	426	LYS
1	C	427	LEU
1	D	125	VAL
1	D	309	LEU
1	D	389	MET

Some sidechains can be flipped to improve hydrogen bonding and reduce clashes. All (12) such sidechains are listed below:

Mol	Chain	Res	Type
1	A	73	GLN
1	A	93	ASN
1	A	189	ASN
1	A	372	GLN
1	B	93	ASN
1	B	138	GLN
1	B	199	ASN
1	B	377	ASN
1	C	93	ASN
1	D	93	ASN
1	D	138	GLN
1	D	164	ASN

### 5.3.3 RNA ⓘ

There are no RNA molecules in this entry.

## 5.4 Non-standard residues in protein, DNA, RNA chains ⓘ

4 non-standard protein/DNA/RNA residues are modelled in this entry.

In the following table, the Counts columns list the number of bonds (or angles) for which Mogul statistics could be retrieved, the number of bonds (or angles) that are observed in the model and the number of bonds (or angles) that are defined in the chemical component dictionary. The Link column lists molecule types, if any, to which the group is linked. The Z score for a bond length (or angle) is the number of standard deviations the observed value is removed from the expected value. A bond length (or angle) with  $|Z| > 2$  is considered an outlier worth inspection. RMSZ is the root-mean-square of all Z scores of the bond lengths (or angles).

Mol	Type	Chain	Res	Link	Bond lengths			Bond angles		
					Counts	RMSZ	# Z  > 2	Counts	RMSZ	# Z  > 2
1	CSO	A	126	1	3,6,7	0.63	0	1,6,8	2.46	1 (100%)
1	CSO	B	126	1	3,6,7	0.46	0	1,6,8	2.54	1 (100%)
1	CSO	C	126	1	3,6,7	0.55	0	1,6,8	2.24	1 (100%)
1	CSO	D	126	1	3,6,7	0.49	0	1,6,8	2.21	1 (100%)

In the following table, the Chirals column lists the number of chiral outliers, the number of chiral centers analysed, the number of these observed in the model and the number defined in the chemical component dictionary. Similar counts are reported in the Torsion and Rings columns. '-' means no outliers of that kind were identified.

Mol	Type	Chain	Res	Link	Chirals	Torsions	Rings
1	CSO	A	126	1	-	0/1/5/7	0/0/0/0
1	CSO	B	126	1	-	0/1/5/7	0/0/0/0
1	CSO	C	126	1	-	0/1/5/7	0/0/0/0
1	CSO	D	126	1	-	0/1/5/7	0/0/0/0

There are no bond length outliers.

All (4) bond angle outliers are listed below:

Mol	Chain	Res	Type	Atoms	Z	Observed(°)	Ideal(°)
1	B	126	CSO	O-C-CA	-2.54	118.88	125.49
1	A	126	CSO	O-C-CA	-2.46	119.07	125.49
1	C	126	CSO	O-C-CA	-2.24	119.64	125.49
1	D	126	CSO	O-C-CA	-2.21	119.73	125.49

There are no chirality outliers.

There are no torsion outliers.

There are no ring outliers.

No monomer is involved in short contacts.

## 5.5 Carbohydrates [i](#)

There are no carbohydrates in this entry.

## 5.6 Ligand geometry [i](#)

Of 14 ligands modelled in this entry, 8 are monoatomic - leaving 6 for Mogul analysis.

In the following table, the Counts columns list the number of bonds (or angles) for which Mogul statistics could be retrieved, the number of bonds (or angles) that are observed in the model and the number of bonds (or angles) that are defined in the chemical component dictionary. The Link column lists molecule types, if any, to which the group is linked. The Z score for a bond length (or angle) is the number of standard deviations the observed value is removed from the expected value. A bond length (or angle) with  $|Z| > 2$  is considered an outlier worth inspection. RMSZ is the root-mean-square of all Z scores of the bond lengths (or angles).

Mol	Type	Chain	Res	Link	Bond lengths			Bond angles		
					Counts	RMSZ	$\# Z  > 2$	Counts	RMSZ	$\# Z  > 2$
6	GOL	A	4001	-	5,5,5	0.34	0	5,5,5	0.31	0
5	MES	A	5001	-	11,12,12	0.63	0	14,16,16	2.65	5 (35%)
4	COA	A	6001	-	40,50,50	1.62	5 (12%)	50,75,75	1.40	6 (12%)
4	COA	B	6002	-	40,50,50	1.60	5 (12%)	50,75,75	1.29	2 (4%)
4	COA	C	6003	-	40,50,50	1.67	7 (17%)	50,75,75	1.17	2 (4%)
4	COA	D	6004	-	40,50,50	1.63	5 (12%)	50,75,75	1.31	2 (4%)

In the following table, the Chirals column lists the number of chiral outliers, the number of chiral centers analysed, the number of these observed in the model and the number defined in the chemical component dictionary. Similar counts are reported in the Torsion and Rings columns. '-' means no outliers of that kind were identified.

Mol	Type	Chain	Res	Link	Chirals	Torsions	Rings
6	GOL	A	4001	-	-	0/4/4/4	0/0/0/0
5	MES	A	5001	-	-	0/6/14/14	0/1/1/1
4	COA	A	6001	-	-	0/44/64/64	0/3/3/3
4	COA	B	6002	-	-	0/44/64/64	0/3/3/3
4	COA	C	6003	-	-	0/44/64/64	0/3/3/3
4	COA	D	6004	-	-	0/44/64/64	0/3/3/3

All (22) bond length outliers are listed below:

Mol	Chain	Res	Type	Atoms	Z	Observed(Å)	Ideal(Å)
4	C	6003	COA	C2A-N3A	2.06	1.35	1.32
4	C	6003	COA	O4B-C1B	2.53	1.44	1.41
4	D	6004	COA	C5A-C4A	2.62	1.46	1.40
4	A	6001	COA	C5A-C4A	2.71	1.46	1.40
4	B	6002	COA	C5A-C4A	2.73	1.46	1.40
4	C	6003	COA	C5A-C4A	2.76	1.46	1.40
4	B	6002	COA	P2A-O5A	3.49	1.69	1.54
4	A	6001	COA	P2A-O5A	3.58	1.70	1.54
4	C	6003	COA	P2A-O5A	3.60	1.70	1.54
4	D	6004	COA	P2A-O5A	3.66	1.70	1.54

*Continued on next page...*



*Continued from previous page...*

Mol	Chain	Res	Type	Atoms	Z	Observed(Å)	Ideal(Å)
4	C	6003	COA	P1A-O2A	3.69	1.70	1.54
4	B	6002	COA	P1A-O2A	3.72	1.70	1.54
4	A	6001	COA	P1A-O2A	3.73	1.70	1.54
4	D	6004	COA	P1A-O2A	3.74	1.70	1.54
4	B	6002	COA	P3B-O8A	4.11	1.69	1.54
4	D	6004	COA	P3B-O8A	4.36	1.70	1.54
4	A	6001	COA	P3B-O8A	4.38	1.70	1.54
4	C	6003	COA	P3B-O8A	4.46	1.70	1.54
4	D	6004	COA	P3B-O7A	5.88	1.70	1.51
4	A	6001	COA	P3B-O7A	5.91	1.70	1.51
4	B	6002	COA	P3B-O7A	6.03	1.71	1.51
4	C	6003	COA	P3B-O7A	6.04	1.71	1.51

All (17) bond angle outliers are listed below:

Mol	Chain	Res	Type	Atoms	Z	Observed(°)	Ideal(°)
4	B	6002	COA	N3A-C2A-N1A	-7.08	123.47	128.89
4	A	6001	COA	N3A-C2A-N1A	-6.76	123.72	128.89
4	D	6004	COA	N3A-C2A-N1A	-6.50	123.91	128.89
4	C	6003	COA	N3A-C2A-N1A	-6.02	124.28	128.89
4	D	6004	COA	P2A-O3A-P1A	-4.10	121.21	132.73
4	A	6001	COA	P2A-O3A-P1A	-3.57	122.70	132.73
4	C	6003	COA	P2A-O3A-P1A	-3.36	123.28	132.73
4	B	6002	COA	P2A-O3A-P1A	-3.16	123.86	132.73
4	A	6001	COA	C7P-C6P-C5P	-3.13	107.15	112.31
4	A	6001	COA	C1B-N9A-C4A	-2.03	123.87	126.94
5	A	5001	MES	C7-N4-C3	2.02	116.44	111.27
4	A	6001	COA	N6A-C6A-N1A	2.06	123.64	119.20
4	A	6001	COA	C2A-N1A-C6A	2.09	122.50	118.77
5	A	5001	MES	C7-N4-C5	2.27	117.08	111.27
5	A	5001	MES	O1S-S-C8	2.36	108.92	106.91
5	A	5001	MES	O2S-S-C8	2.51	109.05	106.91
5	A	5001	MES	C5-N4-C3	8.11	126.47	108.90

There are no chirality outliers.

There are no torsion outliers.

There are no ring outliers.

4 monomers are involved in 7 short contacts:

Mol	Chain	Res	Type	Clashes	Symm-Clashes
5	A	5001	MES	3	0

*Continued on next page...*

*Continued from previous page...*

Mol	Chain	Res	Type	Clashes	Symm-Clashes
4	A	6001	COA	3	0
4	B	6002	COA	1	0
4	D	6004	COA	1	0

## 5.7 Other polymers [i](#)

There are no such residues in this entry.

## 5.8 Polymer linkage issues [i](#)

There are no chain breaks in this entry.

## 6 Fit of model and data [i](#)

### 6.1 Protein, DNA and RNA chains [i](#)

In the following table, the column labelled ‘#RSRZ> 2’ contains the number (and percentage) of RSRZ outliers, followed by percent RSRZ outliers for the chain as percentile scores relative to all X-ray entries and entries of similar resolution. The OWAB column contains the minimum, median, 95<sup>th</sup> percentile and maximum values of the occupancy-weighted average B-factor per residue. The column labelled ‘Q< 0.9’ lists the number of (and percentage) of residues with an average occupancy less than 0.9.

Mol	Chain	Analysed	<RSRZ>	#RSRZ>2	OWAB(Å <sup>2</sup> )	Q<0.9
1	A	390/395 (98%)	-0.60	1 (0%) 94 94	5, 10, 24, 56	18 (4%)
1	B	390/395 (98%)	-0.55	2 (0%) 91 92	6, 12, 25, 47	24 (6%)
1	C	392/395 (99%)	-0.29	11 (2%) 56 60	11, 22, 38, 62	17 (4%)
1	D	392/395 (99%)	-0.43	2 (0%) 91 92	11, 20, 34, 53	25 (6%)
All	All	1564/1580 (98%)	-0.46	16 (1%) 84 86	5, 17, 34, 62	84 (5%)

All (16) RSRZ outliers are listed below:

Mol	Chain	Res	Type	RSRZ
1	C	244	GLY	4.7
1	C	243	LYS	4.5
1	C	242	VAL	4.5
1	C	35	SER	3.8
1	C	246	PRO	3.3
1	C	261	PHE	2.7
1	C	270	VAL	2.7
1	C	275	ASN	2.6
1	D	273	LYS	2.5
1	D	244	GLY	2.5
1	C	274	GLU	2.3
1	A	243	LYS	2.2
1	C	245	GLN	2.2
1	C	241	THR	2.1
1	B	273	LYS	2.1
1	B	270	VAL	2.0

### 6.2 Non-standard residues in protein, DNA, RNA chains [i](#)

In the following table, the Atoms column lists the number of modelled atoms in the group and the number defined in the chemical component dictionary. LLDF column lists the quality of electron

density of the group with respect to its neighbouring residues in protein, DNA or RNA chains. The B-factors column lists the minimum, median, 95<sup>th</sup> percentile and maximum values of B factors of atoms in the group. The column labelled 'Q< 0.9' lists the number of atoms with occupancy less than 0.9.

Mol	Type	Chain	Res	Atoms	RSCC	RSR	LLDF	B-factors(Å <sup>2</sup> )	Q<0.9
1	CSO	C	126	7/8	0.95	0.08	-	12,14,19,24	0
1	CSO	D	126	7/8	0.97	0.06	-	15,16,25,29	0
1	CSO	A	126	7/8	0.97	0.09	-	5,8,13,22	0
1	CSO	B	126	7/8	0.97	0.08	-	7,8,17,23	0

### 6.3 Carbohydrates [i](#)

There are no carbohydrates in this entry.

### 6.4 Ligands [i](#)

In the following table, the Atoms column lists the number of modelled atoms in the group and the number defined in the chemical component dictionary. LLDF column lists the quality of electron density of the group with respect to its neighbouring residues in protein, DNA or RNA chains. The B-factors column lists the minimum, median, 95<sup>th</sup> percentile and maximum values of B factors of atoms in the group. The column labelled 'Q< 0.9' lists the number of atoms with occupancy less than 0.9.

Mol	Type	Chain	Res	Atoms	RSCC	RSR	LLDF	B-factors(Å <sup>2</sup> )	Q<0.9
6	GOL	A	4001	6/6	0.90	0.20	5.14	41,43,43,44	0
4	COA	A	6001	48/48	0.86	0.17	4.15	22,37,47,48	1
4	COA	B	6002	48/48	0.91	0.19	2.96	18,29,41,41	1
4	COA	D	6004	48/48	0.90	0.15	2.08	37,49,53,54	1
4	COA	C	6003	48/48	0.89	0.17	1.68	29,41,49,50	1
2	CL	A	2002	1/1	1.00	0.07	0.19	11,11,11,11	0
3	K	A	3001	1/1	1.00	0.06	-0.25	9,9,9,9	0
2	CL	C	2004	1/1	0.99	0.06	-0.98	19,19,19,19	0
3	K	D	3004	1/1	1.00	0.05	-1.62	18,18,18,18	0
2	CL	B	2001	1/1	1.00	0.09	-1.95	10,10,10,10	0
2	CL	D	2003	1/1	0.99	0.05	-2.09	19,19,19,19	0
3	K	C	3003	1/1	0.99	0.03	-3.01	19,19,19,19	0
3	K	B	3002	1/1	1.00	0.03	-3.09	10,10,10,10	0
5	MES	A	5001	12/12	0.84	0.29	-	65,65,65,65	5

### 6.5 Other polymers [i](#)

There are no such residues in this entry.