



# Full wwPDB X-ray Structure Validation Report ⓘ

Feb 2, 2016 – 12:01 AM GMT

PDB ID : 8ICF  
Title : DNA POLYMERASE BETA (POL B) (E.C.2.7.7.7) COMPLEXED WITH SEVEN BASE PAIRS OF DNA; SOAKED IN THE PRESENCE OF DATP (10 MILLIMOLAR) AND MGCL2 (50 MILLIMOLAR)  
Authors : Pelletier, H.; Sawaya, M.R.  
Deposited on : 1996-04-19  
Resolution : 2.90 Å(reported)

This is a Full wwPDB X-ray Structure Validation Report for a publicly released PDB entry.  
We welcome your comments at [validation@mail.wwpdb.org](mailto:validation@mail.wwpdb.org)  
A user guide is available at  
<http://wwpdb.org/validation/2016/XrayValidationReportHelp>  
with specific help available everywhere you see the ⓘ symbol.

---

The following versions of software and data (see [references ⓘ](#)) were used in the production of this report:

MolProbity : 4.02b-467  
Mogul : 1.7 (RC4), CSD as536be (2015)  
Xtriage (Phenix) : 1.9-1692  
EDS : rb-20026688  
Percentile statistics : 20151230.v01 (using entries in the PDB archive December 30th 2015)  
Refmac : 5.8.0135  
CCP4 : 6.5.0  
Ideal geometry (proteins) : Engh & Huber (2001)  
Ideal geometry (DNA, RNA) : Parkinson et al. (1996)  
Validation Pipeline (wwPDB-VP) : trunk26865

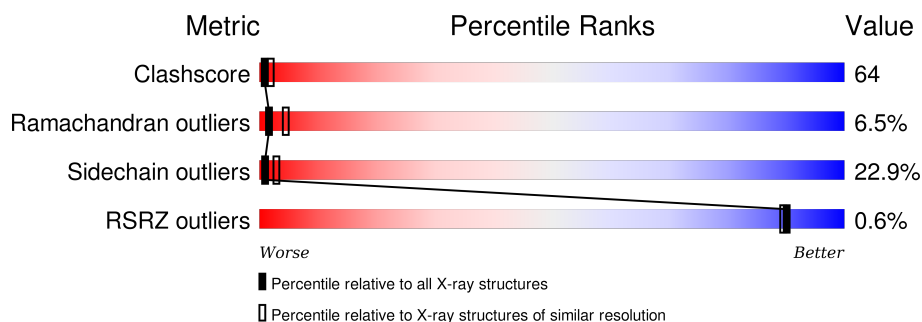
# 1 Overall quality at a glance

The following experimental techniques were used to determine the structure:

## *X-RAY DIFFRACTION*

The reported resolution of this entry is 2.90 Å.

Percentile scores (ranging between 0-100) for global validation metrics of the entry are shown in the following graphic. The table shows the number of entries on which the scores are based.



Metric	Whole archive (#Entries)	Similar resolution (#Entries, resolution range(Å))
Clashscore	102246	1668 (2.90-2.90)
Ramachandran outliers	100387	1630 (2.90-2.90)
Sidechain outliers	100360	1632 (2.90-2.90)
RSRZ outliers	91569	1456 (2.90-2.90)

The table below summarises the geometric issues observed across the polymeric chains and their fit to the electron density. The red, orange, yellow and green segments on the lower bar indicate the fraction of residues that contain outliers for  $\geq 3$ , 2, 1 and 0 types of geometric quality criteria. A grey segment represents the fraction of residues that are not modelled. The numeric value for each fraction is indicated below the corresponding segment, with a dot representing fractions  $\leq 5\%$ . The upper red bar (where present) indicates the fraction of residues that have poor fit to the electron density. The numeric value is given above the bar.

Mol	Chain	Length	Quality of chain
1	T	8	 13% 13% 75%
2	P	7	 14% 86%
3	A	335	 22% 45% 27% . .

The following table lists non-polymeric compounds, carbohydrate monomers and non-standard residues in protein, DNA, RNA chains that are outliers for geometric or electron-density-fit criteria:

Mol	Type	Chain	Res	Chirality	Geometry	Clashes	Electron density
4	NA	A	342	-	-	-	X
5	DTP	A	338	-	-	-	X

## 2 Entry composition

There are 6 unique types of molecules in this entry. The entry contains 3062 atoms, of which 0 are hydrogens and 0 are deuteriums.

In the tables below, the ZeroOcc column contains the number of atoms modelled with zero occupancy, the AltConf column contains the number of residues with at least one atom in alternate conformation and the Trace column contains the number of residues modelled with at most 2 atoms.

- Molecule 1 is a DNA chain called DNA (5'-D(\*CP\*AP\*TP\*TP\*AP\*GP\*AP\*A)-3').

Mol	Chain	Residues	Atoms					ZeroOcc	AltConf	Trace
1	T	8	Total	C	N	O	P	0	0	0
			145	69	27	42	7			

- Molecule 2 is a DNA chain called DNA (5'-D(\*TP\*CP\*TP\*AP\*AP\*TP\*G)-3').

Mol	Chain	Residues	Atoms					ZeroOcc	AltConf	Trace
2	P	7	Total	C	N	O	P	0	0	0
			144	69	24	44	7			

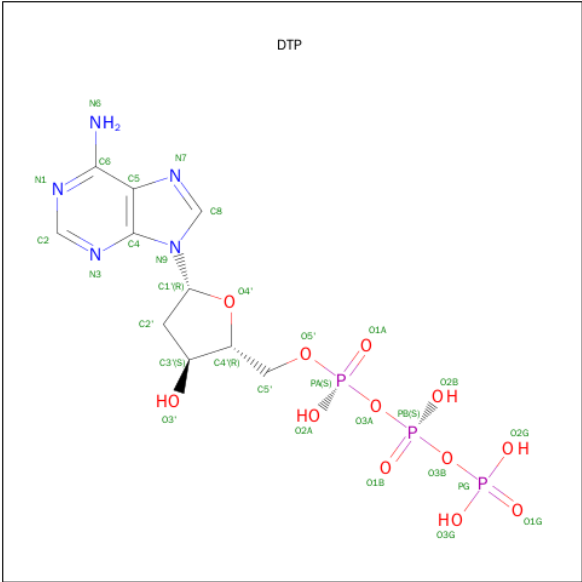
- Molecule 3 is a protein called PROTEIN (DNA POLYMERASE BETA (E.C.2.7.7.7)).

Mol	Chain	Residues	Atoms					ZeroOcc	AltConf	Trace
3	A	327	Total	C	N	O	S	18	0	0
			2623	1657	458	499	9			

- Molecule 4 is SODIUM ION (three-letter code: NA) (formula: Na).

Mol	Chain	Residues	Atoms		ZeroOcc	AltConf
4	A	2	Total	Na	0	0
			2	2		

- Molecule 5 is 2'-DEOXYADENOSINE 5'-TRIPHOSPHATE (three-letter code: DTP) (formula: C<sub>10</sub>H<sub>16</sub>N<sub>5</sub>O<sub>12</sub>P<sub>3</sub>).



Mol	Chain	Residues	Atoms			ZeroOcc	AltConf
5	A	1	Total	O	P	0	0
			13	10	3		

- Molecule 6 is water.

Mol	Chain	Residues	Atoms		ZeroOcc	AltConf
6	A	103	Total	O	0	0
			103	103		
6	P	18	Total	O	0	0
			18	18		
6	T	14	Total	O	0	0
			14	14		

### 3 Residue-property plots

These plots are drawn for all protein, RNA and DNA chains in the entry. The first graphic for a chain summarises the proportions of errors displayed in the second graphic. The second graphic shows the sequence view annotated by issues in geometry and electron density. Residues are color-coded according to the number of geometric quality criteria for which they contain at least one outlier: green = 0, yellow = 1, orange = 2 and red = 3 or more. A red dot above a residue indicates a poor fit to the electron density ( $RSRZ > 2$ ). Stretches of 2 or more consecutive residues without any outlier are shown as a green connector. Residues present in the sample, but not in the model, are shown in grey.

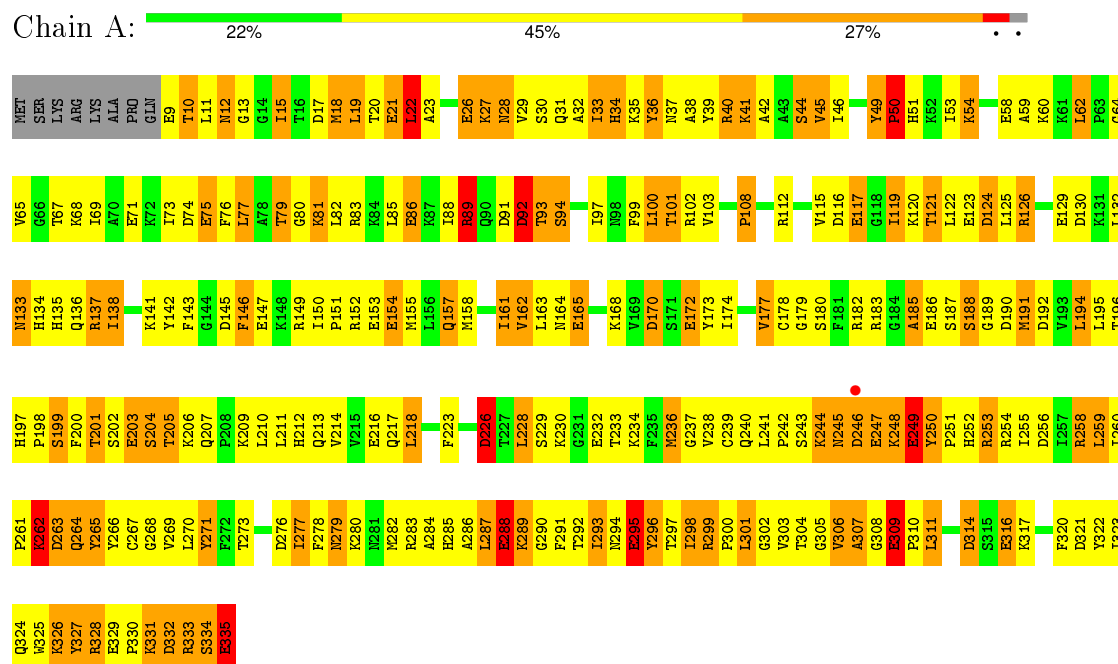
- Molecule 1: DNA (5'-D(\*CP\*AP\*TP\*TP\*AP\*GP\*AP\*A)-3')



- Molecule 2: DNA (5'-D(\*TP\*CP\*TP\*AP\*AP\*TP\*G)-3')



- Molecule 3: PROTEIN (DNA POLYMERASE BETA (E.C.2.7.7.7))



## 4 Data and refinement statistics

Property	Value	Source
Space group	P 21 21 2	Depositor
Cell constants a, b, c, $\alpha$ , $\beta$ , $\gamma$	178.88 Å 57.71 Å 48.38 Å 90.00° 90.00° 90.00°	Depositor
Resolution (Å)	20.00 – 2.90 11.84 – 2.70	Depositor EDS
% Data completeness (in resolution range)	94.0 (20.00-2.90) 90.7 (11.84-2.70)	Depositor EDS
$R_{merge}$	(Not available)	Depositor
$R_{sym}$	0.05	Depositor
$\langle I/\sigma(I) \rangle$ <sup>1</sup>	1.83 (at 2.70 Å)	Xtriage
Refinement program	TNT V. 5-D	Depositor
R, $R_{free}$	0.185 , (Not available) 0.176 , (Not available)	Depositor DCC
$R_{free}$ test set	No test flags present.	DCC
Wilson B-factor (Å <sup>2</sup> )	37.3	Xtriage
Anisotropy	0.301	Xtriage
Bulk solvent $k_{sol}$ (e/Å <sup>3</sup> ), $B_{sol}$ (Å <sup>2</sup> )	0.15 , 116.3	EDS
Estimated twinning fraction	No twinning to report.	Xtriage
L-test for twinning <sup>2</sup>	$\langle  L  \rangle = 0.45$ , $\langle L^2 \rangle = 0.28$	Xtriage
Outliers	1 of 12969 reflections (0.008%)	Xtriage
$F_o, F_c$ correlation	0.93	EDS
Total number of atoms	3062	wwPDB-VP
Average B, all atoms (Å <sup>2</sup> )	41.0	wwPDB-VP

Xtriage's analysis on translational NCS is as follows: *The largest off-origin peak in the Patterson function is 5.63% of the height of the origin peak. No significant pseudotranslation is detected.*

<sup>1</sup>Intensities estimated from amplitudes.

<sup>2</sup>Theoretical values of  $\langle |L| \rangle$ ,  $\langle L^2 \rangle$  for acentric reflections are 0.5, 0.375 respectively for untwinned datasets, and 0.333, 0.2 for perfectly twinned datasets.

## 5 Model quality

### 5.1 Standard geometry

Bond lengths and bond angles in the following residue types are not validated in this section: NA, DTP

The Z score for a bond length (or angle) is the number of standard deviations the observed value is removed from the expected value. A bond length (or angle) with  $|Z| > 5$  is considered an outlier worth inspection. RMSZ is the root-mean-square of all Z scores of the bond lengths (or angles).

Mol	Chain	Bond lengths		Bond angles	
		RMSZ	# Z  >5	RMSZ	# Z  >5
1	T	2.07	3/162 (1.9%)	3.62	24/249 (9.6%)
2	P	2.21	8/160 (5.0%)	4.53	25/243 (10.3%)
3	A	1.19	28/2672 (1.0%)	1.76	57/3590 (1.6%)
All	All	1.33	39/2994 (1.3%)	2.18	106/4082 (2.6%)

Chiral center outliers are detected by calculating the chiral volume of a chiral center and verifying if the center is modelled as a planar moiety or with the opposite hand. A planarity outlier is detected by checking planarity of atoms in a peptide group, atoms in a mainchain group or atoms of a sidechain that are expected to be planar.

Mol	Chain	#Chirality outliers	#Planarity outliers
3	A	1	0

All (39) bond length outliers are listed below:

Mol	Chain	Res	Type	Atoms	Z	Observed(Å)	Ideal(Å)
2	P	3	DT	N1-C2	9.62	1.45	1.38
1	T	1	DC	C3'-O3'	9.31	1.56	1.44
2	P	2	DC	C1'-N1	8.73	1.60	1.49
2	P	3	DT	N3-C4	-7.37	1.32	1.38
3	A	153	GLU	CD-OE2	7.05	1.33	1.25
3	A	172	GLU	CD-OE2	6.99	1.33	1.25
3	A	26	GLU	CD-OE1	6.98	1.33	1.25
3	A	249	GLU	CD-OE2	6.96	1.33	1.25
3	A	295	GLU	CD-OE2	6.81	1.33	1.25
3	A	86	GLU	CD-OE1	6.73	1.33	1.25
3	A	203	GLU	CD-OE1	6.69	1.33	1.25
1	T	6	DG	C3'-O3'	-6.49	1.35	1.44
3	A	329	GLU	CD-OE2	6.47	1.32	1.25
3	A	232	GLU	CD-OE2	6.44	1.32	1.25
3	A	117	GLU	CD-OE2	6.31	1.32	1.25

*Continued on next page...*



*Continued from previous page...*

Mol	Chain	Res	Type	Atoms	Z	Observed(Å)	Ideal(Å)
3	A	147	GLU	CD-OE2	6.25	1.32	1.25
2	P	3	DT	C4-C5	6.21	1.50	1.45
2	P	3	DT	C2-N3	-6.04	1.32	1.37
3	A	309	GLU	CD-OE2	6.02	1.32	1.25
3	A	335	GLU	CD-OE2	6.00	1.32	1.25
3	A	288	GLU	CD-OE2	5.96	1.32	1.25
3	A	186	GLU	CD-OE1	5.88	1.32	1.25
3	A	71	GLU	CD-OE1	5.87	1.32	1.25
2	P	2	DC	N1-C2	5.74	1.45	1.40
3	A	123	GLU	CD-OE1	5.74	1.31	1.25
3	A	316	GLU	CD-OE2	5.72	1.31	1.25
3	A	165	GLU	CD-OE2	5.68	1.31	1.25
2	P	3	DT	C1'-N1	5.61	1.56	1.49
1	T	7	DA	C3'-O3'	-5.49	1.36	1.44
3	A	326	LYS	CE-NZ	-5.43	1.35	1.49
3	A	75	GLU	CD-OE1	5.40	1.31	1.25
3	A	247	GLU	CD-OE1	5.37	1.31	1.25
3	A	58	GLU	CD-OE1	5.33	1.31	1.25
3	A	9	GLU	CD-OE2	5.31	1.31	1.25
3	A	129	GLU	CD-OE1	5.25	1.31	1.25
3	A	154	GLU	CD-OE2	5.23	1.31	1.25
3	A	216	GLU	CD-OE2	5.22	1.31	1.25
2	P	5	DA	C3'-O3'	-5.18	1.37	1.44
3	A	21	GLU	CD-OE1	5.18	1.31	1.25

All (106) bond angle outliers are listed below:

Mol	Chain	Res	Type	Atoms	Z	Observed(°)	Ideal(°)
1	T	4	DT	C6-N1-C1'	-24.81	83.18	120.40
2	P	1	DT	C6-N1-C1'	-24.64	83.45	120.40
2	P	1	DT	C2-N1-C1'	22.45	154.12	118.20
1	T	4	DT	C2-N1-C1'	22.18	153.69	118.20
2	P	3	DT	C6-N1-C1'	-21.47	88.20	120.40
2	P	3	DT	C2-N1-C1'	20.38	150.80	118.20
2	P	2	DC	C2-N1-C1'	18.03	138.63	118.80
2	P	6	DT	C6-N1-C1'	-14.51	98.64	120.40
2	P	2	DC	C6-N1-C1'	-14.29	103.66	120.80
2	P	6	DT	C2-N1-C1'	13.89	140.42	118.20
2	P	3	DT	O4'-C1'-N1	13.74	117.62	108.00
2	P	7	DG	C8-N9-C1'	12.89	143.75	127.00
2	P	3	DT	N3-C2-O2	-12.61	114.74	122.30
2	P	3	DT	P-O3'-C3'	12.58	134.79	119.70

*Continued on next page...*

*Continued from previous page...*

Mol	Chain	Res	Type	Atoms	Z	Observed(°)	Ideal(°)
2	P	7	DG	C4-N9-C1'	-11.79	111.17	126.50
1	T	6	DG	C4-N9-C1'	-11.35	111.75	126.50
1	T	6	DG	C8-N9-C1'	11.20	141.56	127.00
1	T	5	DA	C4-N9-C1'	-10.22	107.90	126.30
1	T	5	DA	C8-N9-C1'	9.91	145.55	127.70
2	P	3	DT	N3-C4-O4	-9.90	113.96	119.90
1	T	1	DC	P-O3'-C3'	9.37	130.94	119.70
1	T	7	DA	C4-N9-C1'	-9.03	110.05	126.30
3	A	192	ASP	CB-CG-OD2	-8.95	110.24	118.30
1	T	4	DT	C1'-O4'-C4'	-8.59	101.51	110.10
3	A	271	TYR	CB-CG-CD1	-8.40	115.96	121.00
1	T	4	DT	O4'-C1'-N1	8.37	113.86	108.00
3	A	116	ASP	CB-CG-OD2	-8.11	111.01	118.30
1	T	7	DA	C8-N9-C1'	7.91	141.94	127.70
3	A	157	GLN	N-CA-CB	7.88	124.78	110.60
3	A	226	ASP	CB-CG-OD2	-7.85	111.24	118.30
3	A	130	ASP	CB-CG-OD2	-7.73	111.34	118.30
3	A	332	ASP	CB-CG-OD1	-7.71	111.36	118.30
3	A	124	ASP	CB-CG-OD2	-7.60	111.46	118.30
3	A	28	ASN	CA-CB-CG	-7.57	96.74	113.40
1	T	3	DT	C6-N1-C1'	-7.42	109.26	120.40
1	T	5	DA	N1-C6-N6	7.38	123.03	118.60
3	A	62	LEU	C-N-CD	-7.32	104.50	120.60
3	A	190	ASP	CB-CG-OD2	-7.31	111.72	118.30
1	T	3	DT	C2-N1-C1'	7.21	129.73	118.20
2	P	1	DT	O4'-C1'-N1	7.18	113.02	108.00
3	A	116	ASP	CB-CG-OD1	7.14	124.72	118.30
3	A	314	ASP	CB-CG-OD1	-7.11	111.90	118.30
3	A	17	ASP	CB-CG-OD1	-7.09	111.92	118.30
2	P	3	DT	C5-C4-O4	6.99	129.79	124.90
1	T	7	DA	O4'-C1'-N9	6.94	112.86	108.00
3	A	326	LYS	CD-CE-NZ	6.81	127.37	111.70
3	A	146	PHE	N-CA-CB	6.81	122.85	110.60
3	A	332	ASP	CB-CG-OD2	6.75	124.37	118.30
1	T	1	DC	O4'-C1'-N1	6.62	112.63	108.00
3	A	263	ASP	CB-CG-OD2	-6.55	112.41	118.30
3	A	250	TYR	CB-CG-CD1	-6.47	117.12	121.00
2	P	2	DC	C6-N1-C2	-6.46	117.71	120.30
3	A	36	TYR	CA-CB-CG	-6.46	101.12	113.40
3	A	17	ASP	CB-CG-OD2	6.43	124.09	118.30
2	P	2	DC	P-O3'-C3'	6.41	127.39	119.70
3	A	92	ASP	CB-CG-OD2	-6.37	112.57	118.30

*Continued on next page...*

*Continued from previous page...*

Mol	Chain	Res	Type	Atoms	Z	Observed(°)	Ideal(°)
3	A	89	ARG	NE-CZ-NH1	6.35	123.48	120.30
3	A	314	ASP	CB-CG-OD2	6.33	123.99	118.30
3	A	91	ASP	CB-CG-OD1	-6.32	112.61	118.30
2	P	2	DC	N3-C2-O2	-6.30	117.49	121.90
1	T	6	DG	O4'-C1'-N9	6.28	112.39	108.00
2	P	3	DT	N1-C2-O2	6.17	128.03	123.10
3	A	137	ARG	CD-NE-CZ	-6.13	115.02	123.60
3	A	116	ASP	N-CA-CB	6.11	121.59	110.60
3	A	271	TYR	N-CA-CB	-6.10	99.62	110.60
2	P	3	DT	C5-C6-N1	-6.08	120.06	123.70
3	A	170	ASP	CB-CG-OD2	-6.07	112.84	118.30
3	A	12	ASN	N-CA-CB	6.04	121.47	110.60
3	A	124	ASP	CB-CG-OD1	6.03	123.73	118.30
3	A	229	SER	N-CA-CB	6.02	119.53	110.50
3	A	246	ASP	CB-CG-OD1	-5.94	112.95	118.30
1	T	2	DA	N1-C6-N6	5.94	122.16	118.60
3	A	91	ASP	CB-CG-OD2	5.90	123.61	118.30
3	A	49	TYR	C-N-CD	-5.87	107.68	120.60
3	A	296	TYR	CB-CA-C	-5.85	98.70	110.40
3	A	108	PRO	N-CA-CB	5.79	110.25	103.30
3	A	246	ASP	CA-C-N	-5.79	104.46	117.20
3	A	92	ASP	CB-CG-OD1	5.76	123.48	118.30
2	P	3	DT	C6-C5-C7	-5.71	119.47	122.90
3	A	333	ARG	NE-CZ-NH1	5.67	123.14	120.30
3	A	309	GLU	N-CA-C	5.61	126.14	111.00
2	P	3	DT	P-O5'-C5'	5.59	129.84	120.90
3	A	276	ASP	CB-CG-OD2	-5.58	113.28	118.30
3	A	34	HIS	CA-CB-CG	-5.50	104.25	113.60
1	T	4	DT	N1-C1'-C2'	5.47	122.99	112.60
3	A	246	ASP	CB-CG-OD2	5.41	123.17	118.30
1	T	5	DA	P-O3'-C3'	5.38	126.15	119.70
2	P	2	DC	O4'-C1'-N1	5.37	111.76	108.00
3	A	258	ARG	NE-CZ-NH1	5.34	122.97	120.30
3	A	170	ASP	CB-CG-OD1	5.33	123.10	118.30
3	A	22	LEU	CB-CG-CD1	-5.32	101.95	111.00
3	A	124	ASP	CB-CA-C	-5.31	99.79	110.40
3	A	33	ILE	N-CA-CB	-5.29	98.62	110.80
1	T	3	DT	N3-C2-O2	-5.25	119.15	122.30
2	P	5	DA	C8-N9-C4	-5.23	103.71	105.80
3	A	334	SER	CB-CA-C	5.22	120.03	110.10
3	A	50	PRO	CB-CA-C	-5.18	99.06	112.00
1	T	4	DT	C6-C5-C7	-5.16	119.81	122.90

*Continued on next page...*

*Continued from previous page...*

Mol	Chain	Res	Type	Atoms	Z	Observed(°)	Ideal(°)
1	T	4	DT	P-O5'-C5'	5.10	129.06	120.90
1	T	7	DA	C8-N9-C4	5.08	107.83	105.80
3	A	86	GLU	N-CA-CB	5.07	119.73	110.60
3	A	177	VAL	CA-CB-CG2	-5.06	103.30	110.90
3	A	126	ARG	NE-CZ-NH1	5.05	122.83	120.30
3	A	177	VAL	CB-CA-C	5.04	120.98	111.40
3	A	263	ASP	CB-CG-OD1	5.03	122.82	118.30
3	A	299	ARG	NE-CZ-NH1	5.01	122.80	120.30

All (1) chirality outliers are listed below:

Mol	Chain	Res	Type	Atom
3	A	309	GLU	CA

There are no planarity outliers.

## 5.2 Too-close contacts ⓘ

In the following table, the Non-H and H(model) columns list the number of non-hydrogen atoms and hydrogen atoms in the chain respectively. The H(added) column lists the number of hydrogen atoms added and optimized by MolProbity. The Clashes column lists the number of clashes within the asymmetric unit, whereas Symm-Clashes lists symmetry related clashes.

Mol	Chain	Non-H	H(model)	H(added)	Clashes	Symm-Clashes
1	T	145	0	80	9	0
2	P	144	0	81	10	0
3	A	2623	0	2641	340	0
4	A	2	0	0	0	0
5	A	13	0	0	1	0
6	A	103	0	0	21	0
6	P	18	0	0	1	0
6	T	14	0	0	1	0
All	All	3062	0	2802	357	0

The all-atom clashscore is defined as the number of clashes found per 1000 atoms (including hydrogen atoms). The all-atom clashscore for this structure is 64.

All (357) close contacts within the same asymmetric unit are listed below, sorted by their clash magnitude.

Atom-1	Atom-2	Interatomic distance (Å)	Clash overlap (Å)
3:A:191:MET:HG2	3:A:255:ILE:HG13	1.35	1.06
3:A:155:MET:HA	3:A:158:MET:HE3	1.42	1.00
3:A:245:ASN:H	3:A:245:ASN:ND2	1.56	1.00
3:A:31:GLN:NE2	3:A:112:ARG:HH12	1.59	1.00
3:A:245:ASN:N	3:A:245:ASN:HD22	1.59	0.94
3:A:119:ILE:HG23	3:A:124:ASP:HB3	1.49	0.94
3:A:293:ILE:HD13	3:A:298:ILE:HG13	1.49	0.93
3:A:12:ASN:HD21	3:A:53:ILE:H	1.14	0.92
3:A:49:TYR:CG	3:A:50:PRO:HD2	2.06	0.90
3:A:172:GLU:HB3	3:A:197:HIS:NE2	1.87	0.89
3:A:259:LEU:HD12	3:A:260:ILE:H	1.37	0.87
3:A:31:GLN:HE21	3:A:112:ARG:HH12	0.87	0.87
3:A:264:GLN:NE2	3:A:296:TYR:HB3	1.89	0.87
3:A:41:LYS:HE2	3:A:64:GLY:CA	2.04	0.87
3:A:278:PHE:CE2	3:A:333:ARG:HD2	2.10	0.86
3:A:60:LYS:HA	3:A:65:VAL:HG23	1.55	0.86
3:A:155:MET:HE2	3:A:188:SER:HB2	1.57	0.86
3:A:31:GLN:HE21	3:A:112:ARG:NH1	1.72	0.85
3:A:286:ALA:HB1	3:A:291:PHE:HB2	1.58	0.85
3:A:73:ILE:HG22	3:A:77:LEU:HD22	1.60	0.83
3:A:330:PRO:HA	3:A:333:ARG:CG	2.08	0.83
3:A:277:ILE:HD13	3:A:277:ILE:H	1.45	0.82
3:A:178:CYS:SG	3:A:194:LEU:HD23	2.19	0.82
3:A:217:GLN:HA	3:A:217:GLN:HE21	1.46	0.81
3:A:259:LEU:HD12	3:A:260:ILE:N	1.95	0.81
3:A:180:SER:HB3	3:A:183:ARG:HH21	1.44	0.81
2:P:5:DA:H2''	2:P:6:DT:H5'	1.62	0.80
3:A:212:HIS:HB3	6:A:541:HOH:O	1.82	0.80
2:P:5:DA:H2''	2:P:6:DT:C5'	2.12	0.79
3:A:150:ILE:CD1	3:A:253:ARG:HG2	2.13	0.79
3:A:49:TYR:CD1	3:A:50:PRO:HD2	2.18	0.79
3:A:41:LYS:HE2	3:A:64:GLY:HA2	1.63	0.79
3:A:260:ILE:HG23	3:A:261:PRO:HD2	1.64	0.78
3:A:18:MET:HG2	3:A:22:LEU:HD23	1.66	0.78
3:A:277:ILE:HG12	3:A:335:GLU:HA	1.64	0.77
3:A:330:PRO:HA	3:A:333:ARG:HG2	1.66	0.77
3:A:323:ILE:O	3:A:324:GLN:HG2	1.84	0.76
1:T:6:DG:H2''	1:T:7:DA:C8	2.20	0.76
3:A:191:MET:CG	3:A:255:ILE:HG13	2.15	0.76
3:A:253:ARG:HG3	3:A:253:ARG:HH11	1.50	0.76
3:A:73:ILE:HG22	3:A:77:LEU:CD2	2.16	0.75
3:A:207:GLN:O	3:A:210:LEU:HB2	1.86	0.75

Continued on next page...

*Continued from previous page...*

Atom-1	Atom-2	Interatomic distance (Å)	Clash overlap (Å)
3:A:293:ILE:CD1	3:A:298:ILE:HG13	2.16	0.75
3:A:286:ALA:HB2	3:A:323:ILE:HG21	1.67	0.74
3:A:233:THR:HB	6:A:538:HOH:O	1.86	0.74
3:A:180:SER:HA	3:A:183:ARG:HE	1.52	0.74
3:A:15:ILE:HB	3:A:46:ILE:CD1	2.18	0.74
3:A:33:ILE:HG23	3:A:34:HIS:H	1.53	0.73
3:A:15:ILE:O	3:A:19:LEU:HB2	1.87	0.73
3:A:180:SER:HB3	3:A:183:ARG:NH2	2.02	0.73
3:A:286:ALA:CB	3:A:323:ILE:HG21	2.19	0.72
3:A:151:PRO:HG2	3:A:154:GLU:CG	2.20	0.72
3:A:108:PRO:O	3:A:112:ARG:HG3	1.89	0.72
3:A:155:MET:HA	3:A:158:MET:CE	2.18	0.71
3:A:119:ILE:CG2	3:A:124:ASP:HB3	2.18	0.71
3:A:41:LYS:HD3	3:A:42:ALA:N	2.05	0.71
3:A:245:ASN:H	3:A:245:ASN:HD22	0.80	0.71
3:A:172:GLU:HB3	3:A:197:HIS:CD2	2.26	0.71
3:A:197:HIS:CD2	3:A:198:PRO:HD2	2.25	0.71
3:A:18:MET:HE1	3:A:76:PHE:HB3	1.71	0.71
3:A:121:THR:O	3:A:124:ASP:HB2	1.91	0.70
3:A:120:LYS:N	3:A:124:ASP:OD2	2.24	0.70
3:A:165:GLU:HB3	3:A:217:GLN:CG	2.21	0.70
3:A:286:ALA:CB	3:A:293:ILE:HD11	2.23	0.69
3:A:331:LYS:HG2	3:A:332:ASP:N	2.03	0.69
3:A:23:ALA:HB2	3:A:39:TYR:HB3	1.73	0.69
3:A:12:ASN:HA	6:A:553:HOH:O	1.92	0.69
3:A:180:SER:CB	3:A:183:ARG:HH21	2.05	0.68
1:T:5:DA:H2"	1:T:6:DG:O5'	1.93	0.68
3:A:82:LEU:HD23	3:A:85:LEU:HB2	1.75	0.68
3:A:151:PRO:HG2	3:A:154:GLU:HG3	1.75	0.68
3:A:79:THR:O	3:A:81:LYS:N	2.27	0.68
3:A:41:LYS:HD3	3:A:42:ALA:H	1.59	0.68
3:A:165:GLU:HB3	3:A:217:GLN:HG2	1.75	0.68
3:A:200:PHE:HE2	3:A:261:PRO:HD3	1.60	0.67
3:A:330:PRO:HA	3:A:333:ARG:HG3	1.75	0.67
3:A:291:PHE:HD2	3:A:323:ILE:HG22	1.60	0.67
3:A:268:GLY:O	3:A:271:TYR:HB3	1.94	0.67
3:A:200:PHE:HB2	6:A:625:HOH:O	1.93	0.67
3:A:18:MET:CE	3:A:82:LEU:HD13	2.25	0.67
3:A:103:VAL:HA	6:A:600:HOH:O	1.92	0.67
3:A:149:ARG:NH2	3:A:188:SER:HA	2.10	0.67
3:A:189:GLY:N	5:A:338:DTP:O2G	2.28	0.67

*Continued on next page...*

*Continued from previous page...*

Atom-1	Atom-2	Interatomic distance (Å)	Clash overlap (Å)
3:A:264:GLN:HE22	3:A:296:TYR:HB3	1.57	0.66
3:A:200:PHE:CD2	3:A:261:PRO:HA	2.30	0.66
3:A:18:MET:HE2	3:A:82:LEU:HD13	1.77	0.66
3:A:182:ARG:NH1	3:A:273:THR:HG21	2.11	0.66
3:A:11:LEU:HD23	3:A:11:LEU:H	1.60	0.65
3:A:286:ALA:O	3:A:291:PHE:N	2.28	0.65
3:A:15:ILE:HG21	3:A:73:ILE:HD13	1.79	0.65
3:A:194:LEU:HD11	3:A:258:ARG:HD3	1.78	0.65
3:A:217:GLN:HA	3:A:217:GLN:NE2	2.10	0.65
3:A:302:GLY:H	3:A:307:ALA:HB3	1.60	0.65
3:A:155:MET:CE	3:A:188:SER:HB2	2.26	0.65
3:A:286:ALA:HB2	3:A:293:ILE:HD11	1.78	0.65
3:A:228:LEU:HB2	3:A:236:MET:O	1.96	0.65
1:T:6:DG:N7	6:T:652:HOH:O	2.29	0.64
3:A:302:GLY:HA3	3:A:307:ALA:HB2	1.80	0.64
3:A:270:LEU:HD21	3:A:282:MET:CE	2.28	0.63
3:A:18:MET:O	3:A:21:GLU:HB2	1.98	0.63
3:A:182:ARG:NH1	3:A:273:THR:OG1	2.32	0.62
3:A:172:GLU:HG2	3:A:198:PRO:HG2	1.80	0.62
3:A:35:LYS:O	3:A:38:ALA:HB3	1.99	0.62
3:A:267:CYS:N	6:A:508:HOH:O	2.28	0.62
3:A:41:LYS:NZ	3:A:64:GLY:O	2.29	0.62
3:A:60:LYS:HA	3:A:65:VAL:CG2	2.27	0.62
3:A:122:LEU:HB3	6:A:623:HOH:O	1.99	0.62
3:A:26:GLU:HA	3:A:30:SER:OG	2.00	0.61
3:A:33:ILE:HG23	3:A:34:HIS:N	2.15	0.61
3:A:18:MET:HE1	3:A:76:PHE:CB	2.30	0.61
3:A:133:ASN:H	3:A:136:GLN:HE21	1.48	0.61
3:A:300:PRO:HD2	3:A:308:GLY:O	2.01	0.61
3:A:122:LEU:O	3:A:126:ARG:HG3	2.01	0.61
3:A:291:PHE:CD2	3:A:323:ILE:HG22	2.35	0.61
3:A:253:ARG:NH1	6:A:503:HOH:O	2.33	0.60
3:A:133:ASN:ND2	3:A:135:HIS:H	1.99	0.60
3:A:150:ILE:HD13	3:A:253:ARG:HG2	1.83	0.60
3:A:59:ALA:O	3:A:65:VAL:HG21	2.01	0.60
3:A:280:LYS:O	3:A:284:ALA:N	2.33	0.60
3:A:270:LEU:HD21	3:A:282:MET:HE1	1.83	0.60
3:A:285:HIS:HD2	3:A:323:ILE:HD12	1.66	0.60
3:A:162:VAL:CG1	3:A:218:LEU:HD21	2.31	0.60
3:A:306:VAL:HG22	6:A:650:HOH:O	2.00	0.59
3:A:311:LEU:HB3	3:A:322:TYR:CE2	2.37	0.59

*Continued on next page...*

*Continued from previous page...*

Atom-1	Atom-2	Interatomic distance (Å)	Clash overlap (Å)
3:A:200:PHE:HE2	3:A:261:PRO:CD	2.14	0.59
3:A:277:ILE:HD11	3:A:334:SER:O	2.02	0.59
3:A:203:GLU:O	3:A:205:THR:N	2.36	0.59
3:A:302:GLY:H	3:A:307:ALA:CB	2.15	0.59
3:A:68:LYS:HB2	3:A:68:LYS:NZ	2.17	0.59
3:A:180:SER:HA	3:A:183:ARG:NE	2.18	0.59
3:A:41:LYS:O	3:A:45:VAL:HG13	2.02	0.58
3:A:133:ASN:HD22	3:A:135:HIS:H	1.50	0.58
3:A:155:MET:CA	3:A:158:MET:HE3	2.27	0.58
3:A:18:MET:HG2	3:A:22:LEU:CD2	2.33	0.58
3:A:237:GLY:O	3:A:254:ARG:NH1	2.36	0.58
3:A:248:LYS:HG2	3:A:248:LYS:O	2.03	0.58
3:A:180:SER:CA	3:A:183:ARG:HH21	2.15	0.57
3:A:142:TYR:CE1	3:A:252:HIS:CG	2.93	0.57
3:A:330:PRO:CA	3:A:333:ARG:HG2	2.33	0.57
3:A:245:ASN:ND2	3:A:245:ASN:N	2.30	0.57
3:A:326:LYS:HE3	3:A:328:ARG:HH21	1.69	0.57
3:A:240:GLN:NE2	3:A:250:TYR:O	2.32	0.57
3:A:172:GLU:CG	3:A:198:PRO:HG2	2.34	0.56
3:A:306:VAL:HG23	3:A:307:ALA:N	2.20	0.56
2:P:6:DT:H2"	2:P:7:DG:H5"	1.88	0.56
3:A:33:ILE:O	3:A:37:ASN:N	2.36	0.56
3:A:236:MET:HG3	3:A:256:ASP:OD1	2.05	0.56
3:A:23:ALA:HA	3:A:39:TYR:HD2	1.71	0.56
3:A:265:TYR:CE2	3:A:269:VAL:HG21	2.41	0.56
3:A:157:GLN:HE22	3:A:244:LYS:NZ	2.04	0.56
3:A:282:MET:HB3	6:A:555:HOH:O	2.06	0.55
3:A:195:LEU:O	3:A:260:ILE:N	2.39	0.55
3:A:20:THR:O	3:A:23:ALA:HB3	2.07	0.55
3:A:163:LEU:HD23	3:A:163:LEU:N	2.19	0.55
3:A:155:MET:SD	3:A:158:MET:HE1	2.46	0.55
3:A:165:GLU:HB3	3:A:217:GLN:HG3	1.88	0.55
3:A:278:PHE:HB2	3:A:333:ARG:O	2.05	0.55
3:A:88:ILE:HG22	3:A:89:ARG:N	2.18	0.55
3:A:288:GLU:O	3:A:290:GLY:N	2.39	0.55
3:A:75:GLU:OE2	3:A:83:ARG:N	2.35	0.55
3:A:23:ALA:HB2	3:A:39:TYR:CB	2.37	0.54
3:A:270:LEU:HA	3:A:316:GLU:OE2	2.07	0.54
3:A:277:ILE:CD1	3:A:277:ILE:H	2.17	0.54
3:A:177:VAL:O	3:A:182:ARG:HD2	2.08	0.54
3:A:93:THR:HG22	3:A:94:SER:N	2.22	0.54

*Continued on next page...*



*Continued from previous page...*

Atom-1	Atom-2	Interatomic distance (Å)	Clash overlap (Å)
3:A:266:TYR:N	3:A:266:TYR:CD1	2.76	0.54
3:A:277:ILE:HD13	3:A:277:ILE:N	2.18	0.54
3:A:150:ILE:N	3:A:188:SER:O	2.41	0.54
3:A:326:LYS:O	3:A:328:ARG:HG2	2.06	0.54
3:A:122:LEU:O	3:A:122:LEU:HD23	2.08	0.54
3:A:15:ILE:HB	3:A:46:ILE:HD11	1.88	0.54
3:A:327:TYR:HE1	3:A:333:ARG:HH21	1.55	0.54
3:A:288:GLU:C	3:A:290:GLY:H	2.11	0.54
3:A:309:GLU:N	3:A:309:GLU:OE1	2.40	0.53
3:A:31:GLN:NE2	3:A:112:ARG:NH1	2.42	0.53
3:A:32:ALA:O	3:A:36:TYR:HB3	2.08	0.53
3:A:311:LEU:HB3	3:A:322:TYR:HE2	1.73	0.53
3:A:103:VAL:HG22	3:A:143:PHE:CD2	2.43	0.53
1:T:4:DT:H2"	1:T:5:DA:C8	2.44	0.53
3:A:253:ARG:HH11	3:A:253:ARG:CG	2.21	0.53
3:A:253:ARG:NH1	6:A:620:HOH:O	2.37	0.53
3:A:300:PRO:HD3	3:A:309:GLU:O	2.07	0.53
3:A:213:GLN:HG2	6:A:644:HOH:O	2.08	0.53
3:A:205:THR:HA	6:A:624:HOH:O	2.08	0.52
3:A:226:ASP:OD1	3:A:238:VAL:HB	2.09	0.52
3:A:21:GLU:OE1	3:A:85:LEU:HD11	2.09	0.52
3:A:173:TYR:OH	3:A:213:GLN:NE2	2.42	0.52
3:A:150:ILE:O	3:A:187:SER:HA	2.09	0.52
3:A:158:MET:HG3	3:A:241:LEU:HD21	1.91	0.52
3:A:150:ILE:HD11	3:A:253:ARG:HG2	1.91	0.52
3:A:33:ILE:HA	3:A:36:TYR:HD2	1.75	0.52
3:A:146:PHE:HB2	6:A:514:HOH:O	2.10	0.52
3:A:282:MET:HE2	6:A:555:HOH:O	2.09	0.52
3:A:194:LEU:CD1	3:A:258:ARG:HD3	2.40	0.52
3:A:45:VAL:HG23	3:A:62:LEU:HD23	1.92	0.51
1:T:4:DT:H2"	1:T:5:DA:O5'	2.10	0.51
3:A:292:THR:O	3:A:298:ILE:HA	2.11	0.51
3:A:196:THR:OG1	3:A:197:HIS:N	2.44	0.51
3:A:23:ALA:HA	3:A:39:TYR:CD2	2.44	0.51
3:A:251:PRO:O	3:A:253:ARG:HD2	2.11	0.51
3:A:198:PRO:O	3:A:200:PHE:N	2.44	0.51
3:A:162:VAL:HG13	3:A:218:LEU:HD21	1.92	0.51
3:A:260:ILE:HG22	3:A:261:PRO:N	2.27	0.50
3:A:253:ARG:NH2	6:A:620:HOH:O	2.42	0.49
3:A:317:LYS:O	3:A:320:PHE:N	2.45	0.49
3:A:277:ILE:HG13	3:A:335:GLU:HB2	1.94	0.49

*Continued on next page...*

*Continued from previous page...*

Atom-1	Atom-2	Interatomic distance (Å)	Clash overlap (Å)
2:P:5:DA:H2"	2:P:6:DT:H5"	1.93	0.49
3:A:212:HIS:CD2	3:A:212:HIS:N	2.79	0.49
3:A:145:ASP:HB3	3:A:252:HIS:O	2.12	0.49
1:T:2:DA:H2"	1:T:3:DT:OP2	2.11	0.49
2:P:1:DT:H2"	2:P:2:DC:H5'	1.94	0.49
3:A:74:ASP:O	3:A:77:LEU:N	2.46	0.49
3:A:179:GLY:O	3:A:182:ARG:HB3	2.13	0.48
1:T:4:DT:H2"	1:T:5:DA:H8	1.78	0.48
3:A:243:SER:OG	3:A:249:GLU:HA	2.13	0.48
3:A:277:ILE:CG1	3:A:335:GLU:HB2	2.43	0.48
3:A:158:MET:CG	3:A:241:LEU:HD21	2.44	0.48
3:A:291:PHE:CD1	3:A:300:PRO:HA	2.48	0.48
3:A:243:SER:CB	3:A:249:GLU:HA	2.43	0.48
3:A:33:ILE:CG2	3:A:34:HIS:H	2.25	0.48
3:A:49:TYR:CE2	3:A:51:HIS:HB2	2.49	0.48
3:A:200:PHE:CE2	3:A:261:PRO:HA	2.48	0.48
3:A:260:ILE:CG2	3:A:261:PRO:HD2	2.39	0.48
3:A:83:ARG:O	3:A:86:GLU:N	2.46	0.48
3:A:195:LEU:HG	3:A:196:THR:N	2.29	0.48
3:A:99:PHE:O	3:A:102:ARG:HG3	2.14	0.48
3:A:12:ASN:ND2	3:A:53:ILE:H	1.96	0.47
3:A:200:PHE:CE2	3:A:261:PRO:HD3	2.45	0.47
3:A:182:ARG:HH11	3:A:273:THR:CG2	2.27	0.47
3:A:41:LYS:HE2	3:A:64:GLY:HA3	1.94	0.47
3:A:210:LEU:HB3	3:A:259:LEU:HD21	1.95	0.47
1:T:4:DT:O2	2:P:4:DA:H2	1.97	0.47
3:A:177:VAL:HG11	3:A:191:MET:HE2	1.97	0.47
3:A:306:VAL:O	3:A:307:ALA:HB2	2.14	0.47
3:A:165:GLU:OE1	3:A:217:GLN:OE1	2.33	0.47
3:A:40:ARG:O	3:A:44:SER:HB2	2.15	0.47
3:A:285:HIS:CD2	3:A:323:ILE:HD12	2.48	0.47
3:A:327:TYR:HD1	3:A:328:ARG:N	2.13	0.47
3:A:234:LYS:HD2	6:A:617:HOH:O	2.14	0.47
3:A:265:TYR:O	3:A:268:GLY:N	2.48	0.47
3:A:289:LYS:N	3:A:289:LYS:HD3	2.30	0.46
3:A:196:THR:HB	3:A:265:TYR:CD1	2.49	0.46
3:A:223:PHE:CE2	3:A:239:CYS:CB	2.98	0.46
3:A:75:GLU:O	3:A:79:THR:HG23	2.15	0.46
3:A:264:GLN:HE21	3:A:264:GLN:HB3	1.42	0.46
3:A:65:VAL:HG23	3:A:65:VAL:O	2.16	0.46
3:A:302:GLY:N	3:A:307:ALA:CB	2.78	0.46

*Continued on next page...*

*Continued from previous page...*

Atom-1	Atom-2	Interatomic distance (Å)	Clash overlap (Å)
3:A:301:LEU:HD12	3:A:302:GLY:H	1.80	0.46
3:A:22:LEU:HA	3:A:22:LEU:HD13	1.35	0.46
3:A:182:ARG:HH11	3:A:273:THR:HG21	1.80	0.46
3:A:15:ILE:HG21	3:A:73:ILE:CD1	2.45	0.46
3:A:165:GLU:OE2	3:A:168:LYS:HD3	2.16	0.46
3:A:28:ASN:ND2	3:A:28:ASN:N	2.51	0.46
3:A:317:LYS:HG3	3:A:321:ASP:OD2	2.15	0.46
3:A:122:LEU:CD2	3:A:126:ARG:CZ	2.94	0.45
3:A:279:ASN:O	3:A:283:ARG:HG3	2.16	0.45
3:A:223:PHE:O	3:A:239:CYS:HA	2.16	0.45
3:A:18:MET:CE	3:A:82:LEU:HD22	2.46	0.45
3:A:302:GLY:CA	3:A:307:ALA:HB2	2.46	0.45
3:A:15:ILE:HG12	3:A:15:ILE:H	1.64	0.45
3:A:201:THR:HG23	3:A:204:SER:OG	2.16	0.45
3:A:262:LYS:HG3	3:A:262:LYS:O	2.12	0.45
3:A:158:MET:O	3:A:161:ILE:N	2.50	0.45
3:A:200:PHE:HE2	3:A:261:PRO:N	2.15	0.45
3:A:73:ILE:O	3:A:77:LEU:HD22	2.17	0.45
3:A:311:LEU:N	3:A:311:LEU:HD13	2.32	0.45
3:A:125:LEU:HD22	3:A:132:LEU:HD21	1.99	0.45
3:A:195:LEU:HA	3:A:195:LEU:HD12	1.54	0.45
3:A:200:PHE:CE2	3:A:261:PRO:CA	3.00	0.45
3:A:328:ARG:HB2	3:A:333:ARG:HD3	1.98	0.45
3:A:205:THR:O	3:A:205:THR:HG23	2.17	0.45
3:A:333:ARG:NH1	6:A:584:HOH:O	2.38	0.45
3:A:287:LEU:HA	3:A:287:LEU:HD13	1.22	0.45
3:A:321:ASP:O	3:A:324:GLN:N	2.48	0.45
3:A:28:ASN:ND2	3:A:108:PRO:HG3	2.32	0.45
3:A:69:ILE:O	3:A:73:ILE:HG13	2.16	0.45
3:A:28:ASN:HD22	3:A:28:ASN:HA	0.90	0.44
3:A:320:PHE:O	3:A:324:GLN:N	2.51	0.44
3:A:41:LYS:CD	3:A:42:ALA:N	2.79	0.44
3:A:267:CYS:SG	3:A:297:THR:HA	2.57	0.44
3:A:60:LYS:CA	3:A:65:VAL:HG23	2.38	0.44
3:A:254:ARG:CZ	3:A:254:ARG:HB3	2.46	0.44
3:A:253:ARG:NH1	3:A:253:ARG:CG	2.79	0.44
3:A:42:ALA:O	3:A:46:ILE:HG23	2.16	0.44
3:A:270:LEU:HD12	3:A:270:LEU:O	2.17	0.44
3:A:301:LEU:HD12	3:A:302:GLY:N	2.32	0.44
3:A:29:VAL:HG21	3:A:94:SER:HB2	1.98	0.44
3:A:260:ILE:CG2	3:A:261:PRO:N	2.79	0.44

*Continued on next page...*

*Continued from previous page...*

Atom-1	Atom-2	Interatomic distance (Å)	Clash overlap (Å)
3:A:194:LEU:HA	3:A:194:LEU:HD13	1.55	0.44
3:A:40:ARG:HB2	3:A:40:ARG:HE	1.18	0.44
3:A:223:PHE:CE2	3:A:239:CYS:HB2	2.53	0.44
3:A:209:LYS:HA	3:A:209:LYS:HD3	1.43	0.44
3:A:182:ARG:NH1	3:A:273:THR:CG2	2.77	0.44
3:A:79:THR:C	3:A:81:LYS:H	2.17	0.43
3:A:197:HIS:CD2	3:A:198:PRO:CD	2.97	0.43
3:A:54:LYS:HD2	3:A:54:LYS:HA	1.62	0.43
2:P:6:DT:C6	2:P:6:DT:H5'	2.53	0.43
3:A:103:VAL:HG22	3:A:143:PHE:HD2	1.83	0.43
3:A:248:LYS:N	3:A:248:LYS:HD2	2.32	0.43
3:A:277:ILE:HG12	3:A:335:GLU:CA	2.41	0.43
3:A:332:ASP:C	3:A:334:SER:H	2.21	0.43
3:A:261:PRO:HB2	3:A:264:GLN:HG3	2.00	0.43
3:A:180:SER:HB2	3:A:185:ALA:CB	2.48	0.43
3:A:132:LEU:O	3:A:137:ARG:NE	2.51	0.43
3:A:165:GLU:HB2	3:A:218:LEU:CD1	2.49	0.43
3:A:85:LEU:HA	3:A:85:LEU:HD12	1.47	0.43
3:A:280:LYS:HA	3:A:283:ARG:HB2	1.99	0.43
3:A:27:LYS:HG3	3:A:28:ASN:N	2.34	0.43
3:A:316:GLU:O	3:A:320:PHE:HD2	2.02	0.43
3:A:198:PRO:C	3:A:200:PHE:H	2.22	0.43
3:A:201:THR:O	3:A:203:GLU:N	2.52	0.43
3:A:270:LEU:HD12	3:A:270:LEU:HA	1.65	0.42
3:A:59:ALA:C	3:A:65:VAL:HG21	2.38	0.42
3:A:211:LEU:HB3	3:A:212:HIS:HD2	1.84	0.42
3:A:259:LEU:HA	3:A:259:LEU:HD13	1.78	0.42
3:A:287:LEU:CD1	3:A:301:LEU:HD23	2.50	0.42
3:A:97:ILE:O	3:A:101:THR:HB	2.19	0.42
3:A:138:ILE:HG22	3:A:138:ILE:O	2.19	0.42
3:A:182:ARG:HG2	3:A:182:ARG:HH11	1.84	0.42
3:A:77:LEU:HA	3:A:77:LEU:HD12	1.39	0.42
3:A:243:SER:HB3	3:A:249:GLU:HA	2.00	0.42
3:A:92:ASP:HB3	6:A:647:HOH:O	2.19	0.42
3:A:33:ILE:HA	3:A:36:TYR:CD2	2.54	0.42
3:A:125:LEU:HD23	3:A:125:LEU:HA	1.64	0.42
3:A:141:LYS:HB2	6:A:622:HOH:O	2.20	0.42
3:A:270:LEU:CD2	3:A:282:MET:HE3	2.49	0.42
3:A:150:ILE:HG23	3:A:151:PRO:HD2	2.02	0.42
3:A:151:PRO:HG2	3:A:154:GLU:HB2	2.02	0.42
3:A:282:MET:HB3	3:A:282:MET:HE2	1.95	0.42

*Continued on next page...*

Continued from previous page...

Atom-1	Atom-2	Interatomic distance (Å)	Clash overlap (Å)
2:P:6:DT:H5'	2:P:6:DT:H6	1.85	0.42
3:A:200:PHE:CE2	3:A:261:PRO:N	2.88	0.41
3:A:11:LEU:N	3:A:11:LEU:HD23	2.25	0.41
3:A:303:VAL:C	3:A:305:GLY:H	2.22	0.41
3:A:261:PRO:O	3:A:263:ASP:N	2.53	0.41
3:A:89:ARG:C	3:A:89:ARG:HD3	2.40	0.41
3:A:194:LEU:CD1	3:A:258:ARG:CG	2.98	0.41
2:P:4:DA:H5'	6:P:569:HOH:O	2.21	0.41
3:A:137:ARG:HH11	3:A:137:ARG:HD2	1.52	0.41
3:A:299:ARG:HA	3:A:300:PRO:HD3	1.97	0.41
3:A:172:GLU:HG3	3:A:198:PRO:CG	2.51	0.41
3:A:115:VAL:C	3:A:117:GLU:H	2.24	0.41
3:A:45:VAL:CG2	3:A:46:ILE:N	2.84	0.41
3:A:164:ASN:O	3:A:168:LYS:HG2	2.20	0.41
3:A:291:PHE:HB3	3:A:292:THR:H	1.67	0.41
3:A:73:ILE:CG2	3:A:77:LEU:HD22	2.40	0.41
3:A:183:ARG:NH2	6:A:631:HOH:O	2.54	0.41
3:A:133:ASN:H	3:A:136:GLN:NE2	2.17	0.41
3:A:100:LEU:HD12	3:A:100:LEU:HA	1.46	0.41
3:A:170:ASP:HB3	3:A:173:TYR:CE2	2.56	0.41
1:T:5:DA:H2	2:P:3:DT:O2	2.04	0.40
3:A:287:LEU:HD11	3:A:301:LEU:HD23	2.02	0.40
3:A:151:PRO:HG2	3:A:154:GLU:CB	2.51	0.40
3:A:62:LEU:HA	3:A:62:LEU:HD12	1.79	0.40
3:A:277:ILE:CG1	3:A:335:GLU:CB	3.00	0.40
3:A:49:TYR:HA	3:A:50:PRO:HD3	1.37	0.40
3:A:197:HIS:CG	3:A:198:PRO:HD2	2.57	0.40
3:A:15:ILE:HG21	3:A:73:ILE:HG23	2.04	0.40

There are no symmetry-related clashes.

## 5.3 Torsion angles [i](#)

### 5.3.1 Protein backbone [i](#)

In the following table, the Percentiles column shows the percent Ramachandran outliers of the chain as a percentile score with respect to all X-ray entries followed by that with respect to entries of similar resolution.

The Analysed column shows the number of residues for which the backbone conformation was analysed, and the total number of residues.

Mol	Chain	Analysed	Favoured	Allowed	Outliers	Percentiles
3	A	325/335 (97%)	267 (82%)	37 (11%)	21 (6%)	<b>1</b> <b>4</b>

All (21) Ramachandran outliers are listed below:

Mol	Chain	Res	Type
3	A	80	GLY
3	A	185	ALA
3	A	199	SER
3	A	202	SER
3	A	204	SER
3	A	205	THR
3	A	244	LYS
3	A	246	ASP
3	A	247	GLU
3	A	295	GLU
3	A	10	THR
3	A	134	HIS
3	A	206	LYS
3	A	262	LYS
3	A	289	LYS
3	A	307	ALA
3	A	310	PRO
3	A	265	TYR
3	A	13	GLY
3	A	50	PRO
3	A	306	VAL

### 5.3.2 Protein sidechains ⓘ

In the following table, the Percentiles column shows the percent sidechain outliers of the chain as a percentile score with respect to all X-ray entries followed by that with respect to entries of similar resolution.

The Analysed column shows the number of residues for which the sidechain conformation was analysed, and the total number of residues.

Mol	Chain	Analysed	Rotameric	Outliers	Percentiles
3	A	288/295 (98%)	222 (77%)	66 (23%)	<b>1</b> <b>3</b>

All (66) residues with a non-rotameric sidechain are listed below:

Mol	Chain	Res	Type
3	A	10	THR
3	A	15	ILE
3	A	18	MET
3	A	19	LEU
3	A	22	LEU
3	A	27	LYS
3	A	40	ARG
3	A	41	LYS
3	A	44	SER
3	A	45	VAL
3	A	54	LYS
3	A	67	THR
3	A	77	LEU
3	A	79	THR
3	A	81	LYS
3	A	89	ARG
3	A	92	ASP
3	A	93	THR
3	A	94	SER
3	A	100	LEU
3	A	101	THR
3	A	119	ILE
3	A	121	THR
3	A	133	ASN
3	A	138	ILE
3	A	152	ARG
3	A	161	ILE
3	A	162	VAL
3	A	174	ILE
3	A	188	SER
3	A	191	MET
3	A	194	LEU
3	A	199	SER
3	A	201	THR
3	A	214	VAL
3	A	218	LEU
3	A	226	ASP
3	A	228	LEU
3	A	230	LYS
3	A	236	MET
3	A	242	PRO
3	A	245	ASN
3	A	248	LYS

*Continued on next page...*

*Continued from previous page...*

Mol	Chain	Res	Type
3	A	249	GLU
3	A	253	ARG
3	A	259	LEU
3	A	262	LYS
3	A	264	GLN
3	A	277	ILE
3	A	279	ASN
3	A	287	LEU
3	A	288	GLU
3	A	293	ILE
3	A	294	ASN
3	A	295	GLU
3	A	298	ILE
3	A	301	LEU
3	A	304	THR
3	A	309	GLU
3	A	311	LEU
3	A	314	ASP
3	A	325	TRP
3	A	327	TYR
3	A	328	ARG
3	A	331	LYS
3	A	335	GLU

Some sidechains can be flipped to improve hydrogen bonding and reduce clashes. All (13) such sidechains are listed below:

Mol	Chain	Res	Type
3	A	12	ASN
3	A	28	ASN
3	A	31	GLN
3	A	133	ASN
3	A	136	GLN
3	A	157	GLN
3	A	212	HIS
3	A	213	GLN
3	A	217	GLN
3	A	245	ASN
3	A	264	GLN
3	A	279	ASN
3	A	294	ASN



### 5.3.3 RNA ⓘ

There are no RNA molecules in this entry.

## 5.4 Non-standard residues in protein, DNA, RNA chains ⓘ

There are no non-standard protein/DNA/RNA residues in this entry.

## 5.5 Carbohydrates ⓘ

There are no carbohydrates in this entry.

## 5.6 Ligand geometry ⓘ

Of 3 ligands modelled in this entry, 2 are monoatomic - leaving 1 for Mogul analysis.

In the following table, the Counts columns list the number of bonds (or angles) for which Mogul statistics could be retrieved, the number of bonds (or angles) that are observed in the model and the number of bonds (or angles) that are defined in the chemical component dictionary. The Link column lists molecule types, if any, to which the group is linked. The Z score for a bond length (or angle) is the number of standard deviations the observed value is removed from the expected value. A bond length (or angle) with  $|Z| > 2$  is considered an outlier worth inspection. RMSZ is the root-mean-square of all Z scores of the bond lengths (or angles).

Mol	Type	Chain	Res	Link	Bond lengths			Bond angles		
					Counts	RMSZ	$\# Z  > 2$	Counts	RMSZ	$\# Z  > 2$
5	DTP	A	338	-	8,12,32	1.27	0	15,20,50	1.22	2 (13%)

In the following table, the Chirals column lists the number of chiral outliers, the number of chiral centers analysed, the number of these observed in the model and the number defined in the chemical component dictionary. Similar counts are reported in the Torsion and Rings columns. '-' means no outliers of that kind were identified.

Mol	Type	Chain	Res	Link	Chirals	Torsions	Rings
5	DTP	A	338	-	-	0/12/12/34	0/0/0/3

There are no bond length outliers.

All (2) bond angle outliers are listed below:

Mol	Chain	Res	Type	Atoms	Z	Observed(°)	Ideal(°)
5	A	338	DTP	O2G-PG-O1G	2.07	117.25	110.58
5	A	338	DTP	O2A-PA-O1A	2.35	118.16	110.58

There are no chirality outliers.

There are no torsion outliers.

There are no ring outliers.

1 monomer is involved in 1 short contact:

Mol	Chain	Res	Type	Clashes	Symm-Clashes
5	A	338	DTP	1	0

## 5.7 Other polymers [i](#)

There are no such residues in this entry.

## 5.8 Polymer linkage issues [i](#)

There are no chain breaks in this entry.

## 6 Fit of model and data [i](#)

### 6.1 Protein, DNA and RNA chains [i](#)

In the following table, the column labelled ‘#RSRZ> 2’ contains the number (and percentage) of RSRZ outliers, followed by percent RSRZ outliers for the chain as percentile scores relative to all X-ray entries and entries of similar resolution. The OWAB column contains the minimum, median, 95<sup>th</sup> percentile and maximum values of the occupancy-weighted average B-factor per residue. The column labelled ‘Q< 0.9’ lists the number of (and percentage) of residues with an average occupancy less than 0.9.

Mol	Chain	Analysed	<RSRZ>	#RSRZ>2	OWAB(Å <sup>2</sup> )	Q<0.9
1	T	8/8 (100%)	0.02	1 (12%) 5 3	22, 45, 92, 100	0
2	P	7/7 (100%)	-0.70	0 100 100	29, 30, 45, 96	0
3	A	325/335 (97%)	-0.96	1 (0%) 94 94	5, 34, 83, 100	0
All	All	340/350 (97%)	-0.93	2 (0%) 90 89	5, 34, 87, 100	0

All (2) RSRZ outliers are listed below:

Mol	Chain	Res	Type	RSRZ
1	T	1	DC	5.0
3	A	246	ASP	3.5

### 6.2 Non-standard residues in protein, DNA, RNA chains [i](#)

There are no non-standard protein/DNA/RNA residues in this entry.

### 6.3 Carbohydrates [i](#)

There are no carbohydrates in this entry.

### 6.4 Ligands [i](#)

In the following table, the Atoms column lists the number of modelled atoms in the group and the number defined in the chemical component dictionary. LLDF column lists the quality of electron density of the group with respect to its neighbouring residues in protein, DNA or RNA chains. The B-factors column lists the minimum, median, 95<sup>th</sup> percentile and maximum values of B factors of atoms in the group. The column labelled ‘Q< 0.9’ lists the number of atoms with occupancy less than 0.9.

Mol	Type	Chain	Res	Atoms	RSCC	RSR	LLDF	B-factors( $\text{\AA}^2$ )	Q<0.9
5	DTP	A	338	13/30	0.89	0.19	3.89	59,68,84,85	13
4	NA	A	342	1/1	0.92	0.13	2.55	52,52,52,52	0
4	NA	A	341	1/1	0.98	0.11	0.39	17,17,17,17	0

## 6.5 Other polymers [i](#)

There are no such residues in this entry.