



# Full wwPDB X-ray Structure Validation Report ⓘ

Feb 1, 2016 – 02:44 AM GMT

PDB ID : 2IDB  
Title : Crystal Structure of 3-octaprenyl-4-hydroxybenzoate decarboxylase (UbiD) from Escherichia coli, Northeast Structural Genomics Target ER459.  
Authors : Zhou, W.; Forouhar, F.; Seetharaman, J; Fang, Y.; Xiao, R.; Cunningham, K.; Ma, L.-C.; Chen, C.X.; Acton, T.B.; Montelione, G.T.; Hunt, J.F.; Tong, L.; Northeast Structural Genomics Consortium (NESG)  
Deposited on : 2006-09-14  
Resolution : 2.90 Å(reported)

This is a Full wwPDB X-ray Structure Validation Report for a publicly released PDB entry.  
We welcome your comments at [validation@mail.wwpdb.org](mailto:validation@mail.wwpdb.org)  
A user guide is available at  
<http://wwpdb.org/validation/2016/XrayValidationReportHelp>  
with specific help available everywhere you see the ⓘ symbol.

---

The following versions of software and data (see [references ⓘ](#)) were used in the production of this report:

MolProbity : 4.02b-467  
Mogul : 1.7 (RC4), CSD as536be (2015)  
Xtriage (Phenix) : 1.9-1692  
EDS : rb-20026688  
Percentile statistics : 20151230.v01 (using entries in the PDB archive December 30th 2015)  
Refmac : 5.8.0135  
CCP4 : 6.5.0  
Ideal geometry (proteins) : Engh & Huber (2001)  
Ideal geometry (DNA, RNA) : Parkinson et al. (1996)  
Validation Pipeline (wwPDB-VP) : trunk26865

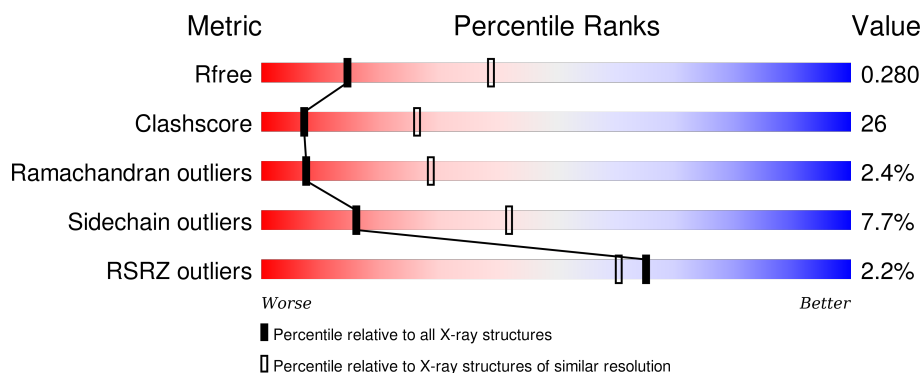
# 1 Overall quality at a glance

The following experimental techniques were used to determine the structure:

## *X-RAY DIFFRACTION*

The reported resolution of this entry is 2.90 Å.

Percentile scores (ranging between 0-100) for global validation metrics of the entry are shown in the following graphic. The table shows the number of entries on which the scores are based.



Metric	Whole archive (#Entries)	Similar resolution (#Entries, resolution range(Å))
$R_{free}$	91344	1451 (2.90-2.90)
Clashscore	102246	1668 (2.90-2.90)
Ramachandran outliers	100387	1630 (2.90-2.90)
Sidechain outliers	100360	1632 (2.90-2.90)
RSRZ outliers	91569	1456 (2.90-2.90)

The table below summarises the geometric issues observed across the polymeric chains and their fit to the electron density. The red, orange, yellow and green segments on the lower bar indicate the fraction of residues that contain outliers for  $\geq 3$ , 2, 1 and 0 types of geometric quality criteria. A grey segment represents the fraction of residues that are not modelled. The numeric value for each fraction is indicated below the corresponding segment, with a dot representing fractions  $\leq 5\%$ . The upper red bar (where present) indicates the fraction of residues that have poor fit to the electron density. The numeric value is given above the bar.

Mol	Chain	Length	Quality of chain
1	A	505	<div> <div>50%</div> <div>38%</div> <div>6%</div> <div>6%</div> </div>
1	B	505	<div> <div>3%</div> <div>44%</div> <div>40%</div> <div>6%</div> <div>10%</div> </div>
1	C	505	<div> <div>2%</div> <div>46%</div> <div>41%</div> <div>•</div> <div>10%</div> </div>

The following table lists non-polymeric compounds, carbohydrate monomers and non-standard residues in protein, DNA, RNA chains that are outliers for geometric or electron-density-fit criteria:

Mol	Type	Chain	Res	Chirality	Geometry	Clashes	Electron density
2	1PE	A	506	-	-	-	X
2	1PE	B	506	-	-	-	X
2	1PE	C	506	-	-	-	X
3	EDO	A	507	-	-	-	X

## 2 Entry composition

There are 4 unique types of molecules in this entry. The entry contains 11118 atoms, of which 0 are hydrogens and 0 are deuteriums.

In the tables below, the ZeroOcc column contains the number of atoms modelled with zero occupancy, the AltConf column contains the number of residues with at least one atom in alternate conformation and the Trace column contains the number of residues modelled with at most 2 atoms.

- Molecule 1 is a protein called 3-octaprenyl-4-hydroxybenzoate carboxy-lyase.

Mol	Chain	Residues	Atoms						ZeroOcc	AltConf	Trace
1	A	474	Total	C	N	O	S	Se	0	0	0
			3734	2390	634	692	7	11			
1	B	455	Total	C	N	O	S	Se	0	0	0
			3576	2284	611	663	7	11			
1	C	456	Total	C	N	O	S	Se	0	0	0
			3594	2300	613	664	7	10			

There are 63 discrepancies between the modelled and reference sequences:

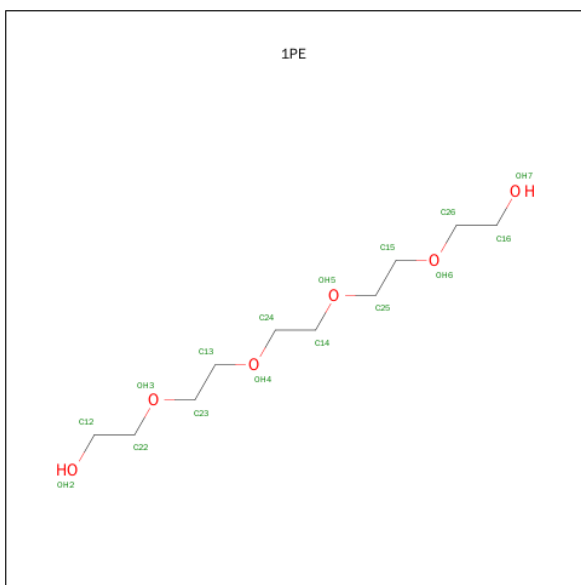
Chain	Residue	Modelled	Actual	Comment	Reference
A	1	MSE	MET	MODIFIED RESIDUE	UNP P0AAB4
A	4	MSE	MET	MODIFIED RESIDUE	UNP P0AAB4
A	60	MSE	MET	MODIFIED RESIDUE	UNP P0AAB4
A	75	MSE	MET	MODIFIED RESIDUE	UNP P0AAB4
A	77	MSE	MET	MODIFIED RESIDUE	UNP P0AAB4
A	120	MSE	MET	MODIFIED RESIDUE	UNP P0AAB4
A	148	MSE	MET	MODIFIED RESIDUE	UNP P0AAB4
A	191	MSE	MET	MODIFIED RESIDUE	UNP P0AAB4
A	382	MSE	MET	MODIFIED RESIDUE	UNP P0AAB4
A	383	MSE	MET	MODIFIED RESIDUE	UNP P0AAB4
A	393	MSE	MET	MODIFIED RESIDUE	UNP P0AAB4
A	421	MSE	MET	MODIFIED RESIDUE	UNP P0AAB4
A	451	MSE	MET	MODIFIED RESIDUE	UNP P0AAB4
A	498	LEU	-	EXPRESSION TAG	UNP P0AAB4
A	499	GLU	-	EXPRESSION TAG	UNP P0AAB4
A	500	HIS	-	EXPRESSION TAG	UNP P0AAB4
A	501	HIS	-	EXPRESSION TAG	UNP P0AAB4
A	502	HIS	-	EXPRESSION TAG	UNP P0AAB4
A	503	HIS	-	EXPRESSION TAG	UNP P0AAB4
A	504	HIS	-	EXPRESSION TAG	UNP P0AAB4
A	505	HIS	-	EXPRESSION TAG	UNP P0AAB4
B	1	MSE	MET	MODIFIED RESIDUE	UNP P0AAB4
B	4	MSE	MET	MODIFIED RESIDUE	UNP P0AAB4

*Continued on next page...*

*Continued from previous page...*

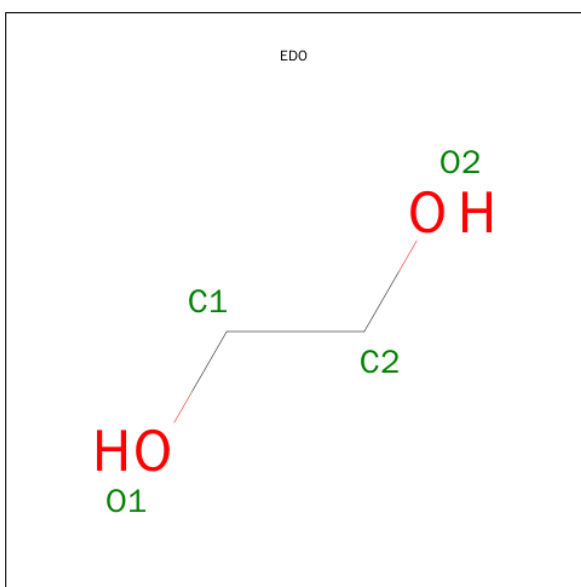
Chain	Residue	Modelled	Actual	Comment	Reference
B	60	MSE	MET	MODIFIED RESIDUE	UNP P0AAB4
B	75	MSE	MET	MODIFIED RESIDUE	UNP P0AAB4
B	77	MSE	MET	MODIFIED RESIDUE	UNP P0AAB4
B	120	MSE	MET	MODIFIED RESIDUE	UNP P0AAB4
B	148	MSE	MET	MODIFIED RESIDUE	UNP P0AAB4
B	191	MSE	MET	MODIFIED RESIDUE	UNP P0AAB4
B	382	MSE	MET	MODIFIED RESIDUE	UNP P0AAB4
B	383	MSE	MET	MODIFIED RESIDUE	UNP P0AAB4
B	393	MSE	MET	MODIFIED RESIDUE	UNP P0AAB4
B	421	MSE	MET	MODIFIED RESIDUE	UNP P0AAB4
B	451	MSE	MET	MODIFIED RESIDUE	UNP P0AAB4
B	498	LEU	-	EXPRESSION TAG	UNP P0AAB4
B	499	GLU	-	EXPRESSION TAG	UNP P0AAB4
B	500	HIS	-	EXPRESSION TAG	UNP P0AAB4
B	501	HIS	-	EXPRESSION TAG	UNP P0AAB4
B	502	HIS	-	EXPRESSION TAG	UNP P0AAB4
B	503	HIS	-	EXPRESSION TAG	UNP P0AAB4
B	504	HIS	-	EXPRESSION TAG	UNP P0AAB4
B	505	HIS	-	EXPRESSION TAG	UNP P0AAB4
C	1	MSE	MET	MODIFIED RESIDUE	UNP P0AAB4
C	4	MSE	MET	MODIFIED RESIDUE	UNP P0AAB4
C	60	MSE	MET	MODIFIED RESIDUE	UNP P0AAB4
C	75	MSE	MET	MODIFIED RESIDUE	UNP P0AAB4
C	77	MSE	MET	MODIFIED RESIDUE	UNP P0AAB4
C	120	MSE	MET	MODIFIED RESIDUE	UNP P0AAB4
C	148	MSE	MET	MODIFIED RESIDUE	UNP P0AAB4
C	191	MSE	MET	MODIFIED RESIDUE	UNP P0AAB4
C	382	MSE	MET	MODIFIED RESIDUE	UNP P0AAB4
C	383	MSE	MET	MODIFIED RESIDUE	UNP P0AAB4
C	393	MSE	MET	MODIFIED RESIDUE	UNP P0AAB4
C	421	MSE	MET	MODIFIED RESIDUE	UNP P0AAB4
C	451	MSE	MET	MODIFIED RESIDUE	UNP P0AAB4
C	498	LEU	-	EXPRESSION TAG	UNP P0AAB4
C	499	GLU	-	EXPRESSION TAG	UNP P0AAB4
C	500	HIS	-	EXPRESSION TAG	UNP P0AAB4
C	501	HIS	-	EXPRESSION TAG	UNP P0AAB4
C	502	HIS	-	EXPRESSION TAG	UNP P0AAB4
C	503	HIS	-	EXPRESSION TAG	UNP P0AAB4
C	504	HIS	-	EXPRESSION TAG	UNP P0AAB4
C	505	HIS	-	EXPRESSION TAG	UNP P0AAB4

- Molecule 2 is PENTAETHYLENE GLYCOL (three-letter code: 1PE) (formula: C<sub>10</sub>H<sub>22</sub>O<sub>6</sub>).



Mol	Chain	Residues	Atoms			ZeroOcc	AltConf
2	A	1	Total 16	C 10	O 6	0	0
2	B	1	Total 16	C 10	O 6	0	0
2	C	1	Total 16	C 10	O 6	0	0

- Molecule 3 is 1,2-ETHANEDIOL (three-letter code: EDO) (formula:  $\text{C}_2\text{H}_6\text{O}_2$ ).



Mol	Chain	Residues	Atoms			ZeroOcc	AltConf
3	A	1	Total	C	O	0	0
			4	2	2		

*Continued on next page...*

*Continued from previous page...*

Mol	Chain	Residues	Atoms			ZeroOcc	AltConf
3	C	1	Total	C	O	0	0
			4	2	2		
3	C	1	Total	C	O	0	0
			4	2	2		

- Molecule 4 is water.

Mol	Chain	Residues	Atoms		ZeroOcc	AltConf
4	A	64	Total	O	0	0
			64	64		
4	B	46	Total	O	0	0
			46	46		
4	C	44	Total	O	0	0
			44	44		

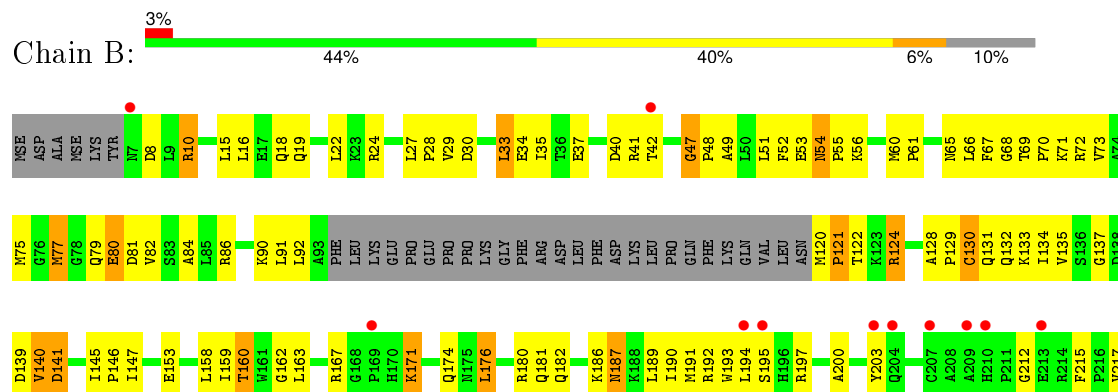
### 3 Residue-property plots

These plots are drawn for all protein, RNA and DNA chains in the entry. The first graphic for a chain summarises the proportions of errors displayed in the second graphic. The second graphic shows the sequence view annotated by issues in geometry and electron density. Residues are color-coded according to the number of geometric quality criteria for which they contain at least one outlier: green = 0, yellow = 1, orange = 2 and red = 3 or more. A red dot above a residue indicates a poor fit to the electron density ( $RSRZ > 2$ ). Stretches of 2 or more consecutive residues without any outlier are shown as a green connector. Residues present in the sample, but not in the model, are shown in grey.

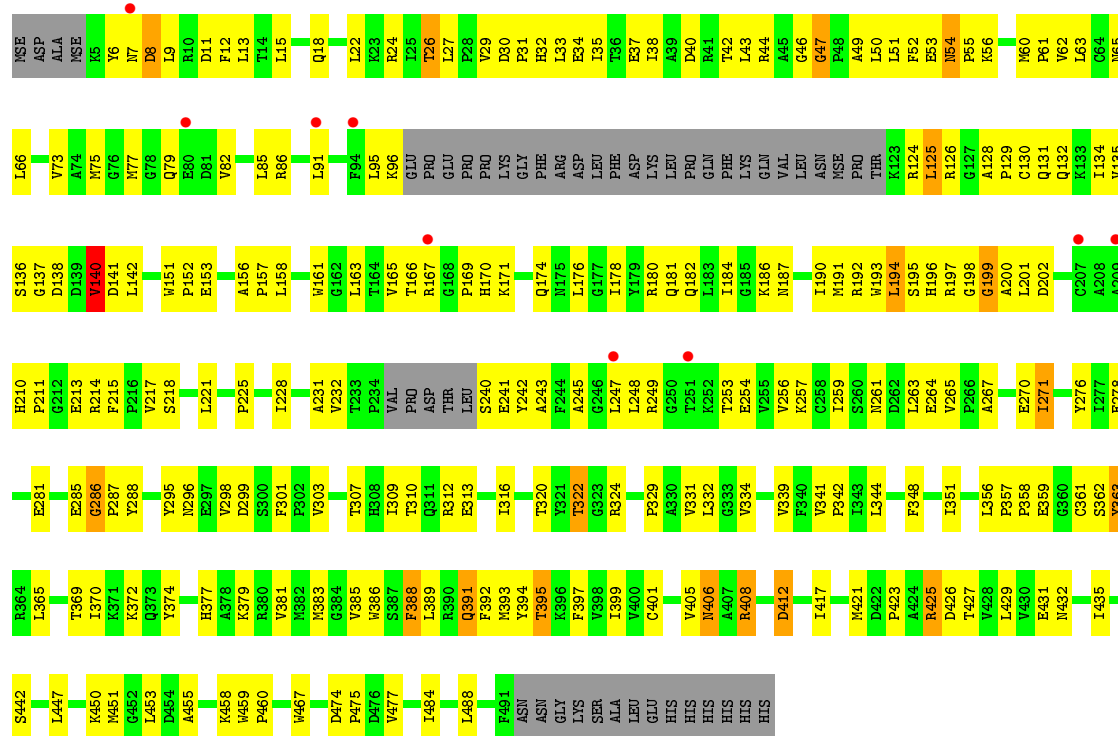
#### • Molecule 1: 3-octaprenyl-4-hydroxybenzoate carboxy-lyase



#### • Molecule 1: 3-octaprenyl-4-hydroxybenzoate carboxy-lyase







## 4 Data and refinement statistics

Property	Value	Source
Space group	P 43 21 2	Depositor
Cell constants a, b, c, $\alpha$ , $\beta$ , $\gamma$	194.29 Å   194.29 Å   106.05 Å 90.00°   90.00°   90.00°	Depositor
Resolution (Å)	40.20 – 2.90 49.47 – 2.80	Depositor EDS
% Data completeness (in resolution range)	89.8 (40.20-2.90) 97.0 (49.47-2.80)	Depositor EDS
$R_{merge}$	0.11	Depositor
$R_{sym}$	0.09	Depositor
$\langle I/\sigma(I) \rangle$ <sup>1</sup>	3.66 (at 2.81 Å)	Xtriage
Refinement program	CNS 1.1	Depositor
R, $R_{free}$	0.201   ,   0.265 0.221   ,   0.280	Depositor DCC
$R_{free}$ test set	4383 reflections (9.89%)	DCC
Wilson B-factor (Å <sup>2</sup> )	44.8	Xtriage
Anisotropy	0.094	Xtriage
Bulk solvent $k_{sol}$ (e/Å <sup>3</sup> ), $B_{sol}$ (Å <sup>2</sup> )	0.33 , 57.4	EDS
Estimated twinning fraction	No twinning to report.	Xtriage
L-test for twinning <sup>2</sup>	$\langle  L  \rangle = 0.49$ , $\langle L^2 \rangle = 0.32$	Xtriage
Outliers	0 of 95353 reflections	Xtriage
$F_o, F_c$ correlation	0.91	EDS
Total number of atoms	11118	wwPDB-VP
Average B, all atoms (Å <sup>2</sup> )	41.0	wwPDB-VP

Xtriage's analysis on translational NCS is as follows: *The largest off-origin peak in the Patterson function is 2.34% of the height of the origin peak. No significant pseudotranslation is detected.*

<sup>1</sup>Intensities estimated from amplitudes.

<sup>2</sup>Theoretical values of  $\langle |L| \rangle$ ,  $\langle L^2 \rangle$  for acentric reflections are 0.5, 0.375 respectively for untwinned datasets, and 0.333, 0.2 for perfectly twinned datasets.

## 5 Model quality

### 5.1 Standard geometry

Bond lengths and bond angles in the following residue types are not validated in this section: EDO, 1PE

The Z score for a bond length (or angle) is the number of standard deviations the observed value is removed from the expected value. A bond length (or angle) with  $|Z| > 5$  is considered an outlier worth inspection. RMSZ is the root-mean-square of all Z scores of the bond lengths (or angles).

Mol	Chain	Bond lengths		Bond angles	
		RMSZ	# $ Z  > 5$	RMSZ	# $ Z  > 5$
1	A	0.45	0/3821	0.65	0/5190
1	B	0.41	0/3655	0.61	0/4962
1	C	0.40	0/3674	0.62	0/4984
All	All	0.42	0/11150	0.63	0/15136

There are no bond length outliers.

There are no bond angle outliers.

There are no chirality outliers.

There are no planarity outliers.

### 5.2 Too-close contacts

In the following table, the Non-H and H(model) columns list the number of non-hydrogen atoms and hydrogen atoms in the chain respectively. The H(added) column lists the number of hydrogen atoms added and optimized by MolProbity. The Clashes column lists the number of clashes within the asymmetric unit, whereas Symm-Clashes lists symmetry related clashes.

Mol	Chain	Non-H	H(model)	H(added)	Clashes	Symm-Clashes
1	A	3734	0	3697	197	0
1	B	3576	0	3540	211	0
1	C	3594	0	3562	186	0
2	A	16	0	22	1	0
2	B	16	0	22	0	0
2	C	16	0	22	1	0
3	A	4	0	6	0	0
3	C	8	0	12	0	0
4	A	64	0	0	3	0
4	B	46	0	0	0	0

*Continued on next page...*

*Continued from previous page...*

Mol	Chain	Non-H	H(model)	H(added)	Clashes	Symm-Clashes
4	C	44	0	0	2	0
All	All	11118	0	10883	567	0

The all-atom clashscore is defined as the number of clashes found per 1000 atoms (including hydrogen atoms). The all-atom clashscore for this structure is 26.

All (567) close contacts within the same asymmetric unit are listed below, sorted by their clash magnitude.

Atom-1	Atom-2	Interatomic distance (Å)	Clash overlap (Å)
1:B:249:ARG:HH12	1:B:253:THR:HG22	1.13	1.07
1:A:389:LEU:HB3	1:A:391:GLN:HE21	1.20	1.05
1:C:161:TRP:HE1	1:C:228:ILE:HD12	1.22	1.01
1:A:215:PHE:HB3	1:A:277:ILE:HG23	1.47	0.97
1:C:125:LEU:HD21	1:C:128:ALA:HB2	1.46	0.96
1:B:257:LYS:HE2	1:B:262:ASP:HA	1.49	0.94
1:A:249:ARG:HH11	1:A:253:THR:HG22	1.30	0.94
1:A:405:VAL:HG23	1:A:412:ASP:HB3	1.53	0.91
1:B:322:THR:HG22	1:B:329:PRO:HG3	1.51	0.89
1:B:457:ASN:HD22	1:B:467:TRP:HE1	1.21	0.88
1:A:193:TRP:HB3	1:A:200:ALA:HB2	1.52	0.88
1:B:272:VAL:HB	1:B:310:THR:HG23	1.55	0.88
1:A:249:ARG:HH11	1:A:253:THR:CG2	1.88	0.86
1:A:142:LEU:HD23	1:A:187:ASN:HA	1.57	0.85
1:B:351:ILE:HA	1:B:370:ILE:HG22	1.57	0.84
1:C:140:VAL:HG21	1:C:187:ASN:HB3	1.58	0.84
1:B:212:GLY:H	1:B:279:GLN:NE2	1.74	0.84
1:C:161:TRP:NE1	1:C:228:ILE:HD12	1.95	0.82
1:A:249:ARG:HD2	1:A:251:THR:HG23	1.62	0.81
1:B:60:MSE:HE3	1:B:145:ILE:HA	1.62	0.81
1:B:141:ASP:HA	1:B:186:LYS:HG2	1.63	0.80
1:C:141:ASP:HA	1:C:186:LYS:HG3	1.63	0.80
1:B:212:GLY:H	1:B:279:GLN:HE22	1.29	0.80
1:A:444:VAL:HG13	1:A:447:LEU:HB3	1.63	0.79
1:C:180:ARG:HH22	1:C:296:ASN:HD21	1.28	0.79
1:A:451:MSE:HE3	1:A:453:LEU:HD22	1.65	0.79
1:B:81:ASP:HB3	1:B:84:ALA:HB2	1.64	0.79
1:B:249:ARG:NH1	1:B:253:THR:HG22	1.95	0.78
1:C:6:TYR:OH	1:C:225:PRO:HG2	1.85	0.77
1:A:27:LEU:HD12	1:B:487:GLU:HG2	1.67	0.77
1:B:129:PRO:O	1:B:132:GLN:HG3	1.85	0.76
1:C:389:LEU:HB3	1:C:391:GLN:HE21	1.49	0.76

*Continued on next page...*

*Continued from previous page...*

Atom-1	Atom-2	Interatomic distance (Å)	Clash overlap (Å)
1:A:396:LYS:HA	1:A:450:LYS:HG2	1.68	0.76
1:C:158:LEU:HD11	1:C:180:ARG:HG2	1.66	0.76
1:A:481:ILE:HA	1:A:484:ILE:HG22	1.66	0.76
1:B:120:MSE:HE3	1:B:247:LEU:HD22	1.66	0.76
1:A:343:ILE:HG23	1:A:346:LYS:HE3	1.65	0.76
1:B:457:ASN:ND2	1:B:467:TRP:HE1	1.84	0.74
1:A:451:MSE:HB2	1:B:423:PRO:HB3	1.70	0.74
1:C:351:ILE:HA	1:C:370:ILE:HG22	1.68	0.74
1:C:435:ILE:HD11	1:C:442:SER:HB3	1.68	0.74
1:A:270:GLU:HG2	1:A:316:ILE:HD13	1.69	0.73
1:B:153:GLU:HB3	1:B:295:TYR:CZ	2.24	0.73
1:A:144:ARG:HH11	1:A:144:ARG:HB3	1.55	0.72
1:C:405:VAL:HG13	1:C:412:ASP:HB3	1.71	0.72
1:A:77:MSE:HG3	1:A:229:LEU:CD1	2.19	0.72
1:C:15:LEU:HA	1:C:18:GLN:HE21	1.55	0.71
1:C:29:VAL:HG11	1:C:52:PHE:CD2	2.25	0.71
1:A:208:ALA:O	1:A:211:PRO:HD3	1.90	0.71
1:C:242:TYR:O	1:C:253:THR:HG21	1.90	0.71
1:B:347:GLN:HG3	1:B:388:PHE:CE1	2.26	0.71
1:C:128:ALA:HB1	1:C:267:ALA:HB1	1.73	0.71
1:A:477:VAL:HG21	1:B:33:LEU:HD13	1.71	0.71
1:A:60:MSE:HE1	1:A:145:ILE:HG12	1.73	0.71
1:B:19:GLN:HG3	1:B:75:MSE:HE1	1.71	0.71
1:C:129:PRO:O	1:C:132:GLN:HG3	1.91	0.70
1:C:184:ILE:HD13	1:C:190:ILE:HD11	1.72	0.70
1:B:53:GLU:HA	1:B:61:PRO:HB3	1.73	0.70
1:C:153:GLU:HB2	1:C:295:TYR:CE2	2.26	0.70
1:B:182:GLN:NE2	1:B:285:GLU:HG3	2.07	0.70
1:A:215:PHE:HB3	1:A:277:ILE:CG2	2.22	0.70
1:C:77:MSE:HE2	1:C:248:LEU:HD21	1.74	0.69
1:B:406:ASN:HD22	1:B:409:ASP:HB2	1.57	0.69
1:B:341:VAL:HG12	1:B:345:GLN:OE1	1.93	0.69
1:A:27:LEU:HG	1:A:28:PRO:HD2	1.73	0.69
1:C:245:ALA:HB1	1:C:249:ARG:HH22	1.56	0.69
1:B:153:GLU:HB3	1:B:295:TYR:CE2	2.28	0.69
1:A:195:SER:HB3	4:A:554:HOH:O	1.91	0.69
1:B:16:LEU:HD11	1:B:72:ARG:HG2	1.75	0.68
1:A:255:VAL:HG21	1:A:264:GLU:HB3	1.75	0.68
1:B:29:VAL:HG11	1:B:52:PHE:CD1	2.28	0.68
1:C:38:ILE:O	1:C:42:THR:HG23	1.92	0.68
1:B:122:THR:O	1:B:252:LYS:HD2	1.94	0.68

*Continued on next page...*

*Continued from previous page...*

Atom-1	Atom-2	Interatomic distance (Å)	Clash overlap (Å)
1:B:390:ARG:O	1:B:393:MSE:HG2	1.93	0.68
1:B:171:LYS:HD2	1:B:171:LYS:H	1.57	0.68
1:A:48:PRO:HA	1:A:72:ARG:NH1	2.09	0.68
1:C:163:LEU:HD11	1:C:176:LEU:HD13	1.75	0.68
1:A:77:MSE:HG3	1:A:229:LEU:HD12	1.76	0.67
1:B:429:LEU:HD11	1:B:451:MSE:HE3	1.76	0.67
1:A:233:THR:HG22	1:A:336:LEU:HD13	1.76	0.67
1:A:322:THR:HG22	1:A:329:PRO:HG3	1.76	0.67
1:B:86:ARG:HG2	1:B:338:GLU:HG3	1.77	0.67
1:C:427:THR:HG21	1:C:451:MSE:HE2	1.76	0.67
1:A:153:GLU:HB2	1:A:295:TYR:CE2	2.30	0.66
1:B:459:TRP:HB3	1:B:460:PRO:HD2	1.77	0.66
1:B:379:LYS:O	1:B:383:MSE:HE2	1.96	0.66
1:A:281:GLU:HG2	1:A:303:VAL:HG11	1.78	0.66
1:A:281:GLU:HG2	1:A:303:VAL:CG1	2.26	0.66
1:C:484:ILE:HG22	1:C:488:LEU:HG	1.77	0.66
1:A:102:LYS:HA	1:A:105:ARG:NE	2.10	0.66
1:B:357:PRO:HB2	1:B:359:GLU:OE2	1.96	0.66
1:B:406:ASN:ND2	1:B:409:ASP:HB2	2.11	0.65
1:A:401:CYS:HB3	1:A:405:VAL:HG11	1.77	0.65
1:C:140:VAL:HG23	1:C:141:ASP:H	1.62	0.65
1:C:435:ILE:CD1	1:C:442:SER:HB3	2.25	0.65
1:B:8:ASP:HA	1:B:224:ASP:HB3	1.78	0.65
1:B:158:LEU:HD21	1:B:180:ARG:HD2	1.79	0.65
1:C:170:HIS:C	1:C:171:LYS:HD2	2.17	0.65
1:A:255:VAL:HG22	1:A:256:VAL:H	1.61	0.65
1:A:102:LYS:O	1:A:105:ARG:HG2	1.96	0.65
1:A:67:PHE:HB3	1:A:73:VAL:HG22	1.78	0.65
1:B:48:PRO:HA	1:B:72:ARG:NH1	2.10	0.64
1:A:359:GLU:HG2	1:B:411:ASN:HA	1.77	0.64
1:B:66:LEU:HD22	1:B:318:HIS:HE1	1.61	0.64
1:A:363:TYR:O	1:A:395:THR:HB	1.98	0.64
1:C:210:HIS:N	1:C:211:PRO:HD3	2.13	0.64
1:A:287:PRO:HD3	1:A:298:VAL:HG22	1.80	0.64
1:C:221:LEU:HB2	1:C:271:ILE:HG23	1.79	0.64
1:A:98:PRO:HG2	1:A:99:GLU:OE1	1.97	0.64
1:B:393:MSE:HG3	1:B:394:TYR:CD1	2.32	0.64
1:A:33:LEU:CD1	1:B:477:VAL:HG11	2.27	0.64
1:A:406:ASN:HD22	1:A:409:ASP:HB2	1.62	0.64
1:A:102:LYS:HA	1:A:105:ARG:HE	1.62	0.64
1:B:69:THR:HG23	1:B:72:ARG:H	1.62	0.63

*Continued on next page...*

*Continued from previous page...*

Atom-1	Atom-2	Interatomic distance (Å)	Clash overlap (Å)
1:C:406:ASN:ND2	1:C:408:ARG:H	1.97	0.63
1:C:341:VAL:HB	1:C:342:PRO:HD3	1.81	0.63
1:B:132:GLN:OE1	1:B:312:ARG:HB2	1.99	0.62
1:C:399:ILE:HD13	1:C:417:ILE:HD11	1.81	0.62
1:C:91:LEU:O	1:C:95:LEU:HD13	1.98	0.62
1:A:389:LEU:HB3	1:A:391:GLN:NE2	2.05	0.62
1:A:75:MSE:HG2	1:A:80:GLU:HG3	1.80	0.62
1:A:422:ASP:OD1	1:B:443:PRO:HD3	2.00	0.62
1:A:360:GLY:O	1:A:364:ARG:HB2	1.99	0.62
1:B:480:HIS:O	1:B:484:ILE:HG12	2.00	0.62
1:A:153:GLU:HB2	1:A:295:TYR:CZ	2.35	0.62
1:A:142:LEU:CD2	1:A:187:ASN:HA	2.29	0.61
1:C:184:ILE:HD13	1:C:190:ILE:CD1	2.30	0.61
1:C:193:TRP:HB3	1:C:200:ALA:HB2	1.80	0.61
1:A:274:GLU:HB2	1:A:308:HIS:HB2	1.81	0.61
1:B:193:TRP:HB3	1:B:200:ALA:HB2	1.80	0.61
1:A:477:VAL:HG21	1:B:33:LEU:CD1	2.30	0.61
1:A:245:ALA:HB3	1:A:253:THR:HG21	1.81	0.61
1:C:35:ILE:HD13	1:C:62:VAL:HG21	1.83	0.60
1:A:270:GLU:HG2	1:A:316:ILE:O	2.01	0.60
1:A:132:GLN:NE2	1:A:313:GLU:H	1.97	0.60
1:B:489:ALA:HA	1:B:492:ASN:HD22	1.65	0.60
1:A:481:ILE:HD11	1:B:41:ARG:NE	2.15	0.60
1:B:22:LEU:HD23	1:B:49:ALA:HB3	1.84	0.60
1:B:147:ILE:HD12	1:B:159:ILE:HG13	1.83	0.60
1:A:53:GLU:HA	1:A:61:PRO:HB3	1.84	0.60
1:A:144:ARG:NH1	1:A:144:ARG:HB3	2.17	0.59
1:C:31:PRO:HA	1:C:35:ILE:HD12	1.83	0.59
1:A:478:VAL:O	1:A:482:ASP:HB2	2.02	0.59
1:B:433:THR:HB	1:B:434:PRO:HD2	1.84	0.59
1:C:165:VAL:HG11	1:C:265:VAL:HG12	1.83	0.59
1:A:196:HIS:CD2	1:A:204:GLN:HE22	2.21	0.59
1:A:196:HIS:HD2	1:A:204:GLN:HE22	1.50	0.59
1:C:171:LYS:HD2	1:C:171:LYS:N	2.18	0.59
1:A:327:ASP:H	1:A:330:ALA:HB3	1.67	0.59
1:A:192:ARG:NH2	1:A:194:LEU:HD11	2.17	0.59
1:B:71:LYS:O	1:B:75:MSE:HG3	2.02	0.59
1:A:33:LEU:HD13	1:B:477:VAL:HG11	1.83	0.59
1:B:182:GLN:HE21	1:B:285:GLU:HG3	1.68	0.59
1:B:24:ARG:HG2	1:B:51:LEU:HD23	1.85	0.58
1:B:228:ILE:O	1:B:231:ALA:HB3	2.03	0.58

*Continued on next page...*

*Continued from previous page...*

Atom-1	Atom-2	Interatomic distance (Å)	Clash overlap (Å)
1:C:82:VAL:O	1:C:85:LEU:HD23	2.03	0.58
1:A:37:GLU:OE1	1:B:473:LYS:HE3	2.03	0.58
1:C:125:LEU:O	1:C:126:ARG:HD3	2.02	0.58
1:B:383:MSE:HG2	1:C:383:MSE:SE	2.53	0.58
1:A:379:LYS:N	1:A:379:LYS:HD2	2.19	0.58
1:A:379:LYS:O	1:A:383:MSE:HG2	2.01	0.58
1:C:388:PHE:CD2	1:C:389:LEU:HG	2.39	0.58
1:C:435:ILE:HD11	1:C:442:SER:CB	2.32	0.58
1:C:374:TYR:O	1:C:377:HIS:HB2	2.03	0.58
1:C:124:ARG:NH1	1:C:257:LYS:HZ3	2.02	0.58
1:A:82:VAL:O	1:A:85:LEU:HD23	2.04	0.58
1:B:215:PHE:HB3	1:B:277:ILE:HG23	1.84	0.58
1:B:417:ILE:O	1:B:421:MSE:HB2	2.04	0.58
1:C:151:TRP:HB3	1:C:152:PRO:HD2	1.86	0.57
1:C:358:PRO:O	1:C:361:CYS:N	2.36	0.57
1:B:187:ASN:HD22	1:B:187:ASN:H	1.52	0.57
1:A:255:VAL:CG2	1:A:264:GLU:HB3	2.34	0.57
1:C:417:ILE:HA	1:C:421:MSE:HE3	1.86	0.57
1:B:163:LEU:HB3	1:B:176:LEU:HD11	1.86	0.57
1:B:86:ARG:O	1:B:90:LYS:HG3	2.04	0.57
1:A:361:CYS:HB2	1:A:364:ARG:HD3	1.87	0.57
1:B:187:ASN:N	1:B:187:ASN:HD22	2.03	0.57
1:A:27:LEU:CD1	1:B:487:GLU:HG2	2.35	0.57
1:C:158:LEU:HD21	1:C:180:ARG:HG2	1.86	0.57
1:C:392:PHE:O	1:C:395:THR:HG23	2.04	0.57
1:C:287:PRO:HD3	1:C:298:VAL:HG22	1.87	0.57
1:C:322:THR:HG22	1:C:329:PRO:HG3	1.86	0.56
1:A:77:MSE:HG3	1:A:229:LEU:HD13	1.86	0.56
1:A:458:LYS:N	1:A:458:LYS:HD2	2.19	0.56
1:C:196:HIS:HA	1:C:200:ALA:HB3	1.87	0.56
1:B:137:GLY:O	1:B:140:VAL:HG23	2.06	0.56
1:A:162:GLY:HA2	1:A:220:ALA:O	2.05	0.56
1:C:128:ALA:CB	1:C:267:ALA:HB1	2.35	0.56
1:A:211:PRO:HA	1:A:279:GLN:HE22	1.70	0.56
1:C:9:LEU:HD23	1:C:225:PRO:HD3	1.86	0.56
1:B:22:LEU:C	1:B:22:LEU:HD13	2.25	0.56
1:A:42:THR:HG21	1:A:50:LEU:HD21	1.88	0.56
1:A:44:ARG:NH1	1:A:326:PRO:HD2	2.21	0.56
1:A:411:ASN:HA	1:B:359:GLU:HG2	1.88	0.55
1:A:423:PRO:HB3	1:B:451:MSE:HB2	1.86	0.55
1:A:421:MSE:HE2	1:B:397:PHE:CZ	2.42	0.55

*Continued on next page...*



*Continued from previous page...*

Atom-1	Atom-2	Interatomic distance (Å)	Clash overlap (Å)
1:B:344:LEU:HD12	1:B:388:PHE:HD2	1.72	0.55
1:B:66:LEU:HD23	1:B:328:GLU:OE1	2.07	0.55
1:C:7:ASN:O	1:C:8:ASP:HB2	2.05	0.55
1:B:334:VAL:HG21	1:B:358:PRO:HG3	1.88	0.55
1:C:86:ARG:HG3	1:C:342:PRO:HG3	1.88	0.55
1:A:397:PHE:CD1	1:A:451:MSE:HE2	2.42	0.55
1:A:330:ALA:O	1:A:334:VAL:HG23	2.07	0.55
1:A:451:MSE:HE3	1:A:453:LEU:CD2	2.36	0.55
1:C:379:LYS:O	1:C:383:MSE:HG2	2.07	0.55
1:A:481:ILE:HD11	1:B:41:ARG:CZ	2.37	0.54
1:B:129:PRO:C	1:B:131:GLN:H	2.10	0.54
1:C:40:ASP:O	1:C:44:ARG:HG3	2.06	0.54
1:A:328:GLU:N	1:A:329:PRO:HD2	2.22	0.54
1:C:43:LEU:HD12	1:C:65:ASN:ND2	2.23	0.54
1:C:357:PRO:CG	1:C:365:LEU:HD12	2.38	0.54
1:C:163:LEU:HD13	1:C:228:ILE:HG22	1.90	0.54
1:B:341:VAL:N	1:B:342:PRO:HD2	2.23	0.54
1:C:166:THR:HG21	1:C:199:GLY:HA2	1.90	0.54
1:C:184:ILE:HG21	1:C:190:ILE:HD11	1.90	0.54
1:C:24:ARG:HG3	1:C:24:ARG:HH21	1.72	0.54
1:B:79:GLN:C	1:B:81:ASP:H	2.09	0.54
1:B:133:LYS:HB2	1:B:311:GLN:HG3	1.89	0.53
1:B:474:ASP:O	1:B:477:VAL:HG22	2.07	0.53
1:A:406:ASN:ND2	1:A:409:ASP:HB2	2.22	0.53
1:A:191:MSE:HE3	1:A:217:VAL:HG11	1.89	0.53
1:C:257:LYS:HD3	1:C:264:GLU:HG3	1.91	0.53
1:C:124:ARG:HD2	1:C:264:GLU:OE1	2.08	0.53
1:A:214:ARG:HG2	1:A:276:TYR:CD2	2.44	0.53
1:B:320:THR:OG1	1:B:321:TYR:N	2.42	0.53
1:C:30:ASP:HA	1:C:56:LYS:HB2	1.89	0.53
1:C:474:ASP:HB3	1:C:477:VAL:HG23	1.89	0.53
1:A:358:PRO:O	1:A:361:CYS:N	2.41	0.53
1:A:41:ARG:NE	1:B:481:ILE:HD11	2.24	0.53
1:C:167:ARG:HG3	1:C:174:GLN:HB3	1.91	0.53
1:B:224:ASP:HB2	1:B:225:PRO:HD2	1.91	0.53
1:C:27:LEU:HD12	1:C:27:LEU:H	1.74	0.53
1:A:30:ASP:O	1:A:34:GLU:HB2	2.08	0.53
1:B:405:VAL:HG13	1:B:412:ASP:HB3	1.89	0.53
1:C:261:ASN:OD1	1:C:263:LEU:HB2	2.08	0.52
1:A:481:ILE:CD1	1:B:37:GLU:HG3	2.39	0.52
1:B:291:HIS:O	1:B:325:PRO:HD3	2.10	0.52

*Continued on next page...*

*Continued from previous page...*

Atom-1	Atom-2	Interatomic distance (Å)	Clash overlap (Å)
1:A:386:TRP:CD1	1:A:450:LYS:HD3	2.45	0.52
1:A:328:GLU:HG3	4:A:523:HOH:O	2.10	0.52
1:C:467:TRP:HB3	2:C:506:1PE:H151	1.91	0.52
1:B:332:LEU:O	1:B:336:LEU:HG	2.09	0.52
1:B:399:ILE:HD13	1:B:417:ILE:HD11	1.92	0.52
1:C:225:PRO:HA	1:C:228:ILE:HD11	1.92	0.52
1:A:484:ILE:CG1	1:B:27:LEU:HD23	2.40	0.52
1:B:270:GLU:OE1	1:B:316:ILE:HG12	2.09	0.52
1:B:489:ALA:HA	1:B:492:ASN:ND2	2.24	0.52
1:C:195:SER:HB3	1:C:197:ARG:HG2	1.91	0.52
1:C:298:VAL:HG12	1:C:299:ASP:N	2.25	0.52
1:A:368:VAL:HG11	1:A:381:VAL:HG11	1.90	0.52
1:B:290:ASP:HB3	1:B:296:ASN:HD21	1.75	0.52
1:B:372:LYS:HD3	1:B:459:TRP:NE1	2.24	0.52
1:B:387:SER:HB3	1:C:383:MSE:HB2	1.92	0.52
1:B:330:ALA:O	1:B:334:VAL:HG23	2.10	0.52
1:A:51:LEU:HD23	1:A:63:LEU:HB2	1.92	0.52
1:A:27:LEU:HD23	1:A:28:PRO:N	2.24	0.51
1:A:229:LEU:O	1:A:233:THR:HG23	2.09	0.51
1:C:191:MSE:HE3	1:C:217:VAL:HG11	1.92	0.51
1:A:261:ASN:CG	1:A:263:LEU:HD23	2.30	0.51
1:B:131:GLN:HG2	1:B:310:THR:OG1	2.10	0.51
1:C:257:LYS:NZ	1:C:264:GLU:OE1	2.44	0.51
1:C:43:LEU:HD12	1:C:65:ASN:HD21	1.74	0.51
1:B:191:MSE:HE3	1:B:217:VAL:HG11	1.92	0.51
1:C:281:GLU:HG2	1:C:303:VAL:HG11	1.90	0.51
1:A:183:LEU:HA	1:A:189:LEU:HD23	1.91	0.51
1:C:192:ARG:NH1	1:C:194:LEU:HD11	2.25	0.51
1:B:479:ALA:O	1:B:482:ASP:HB2	2.10	0.51
1:A:317:TYR:CE2	1:A:319:SER:HB2	2.45	0.51
1:A:163:LEU:HD22	1:A:163:LEU:H	1.76	0.51
1:B:135:VAL:CG2	1:B:309:ILE:HB	2.41	0.51
1:B:66:LEU:O	1:B:72:ARG:HD2	2.11	0.51
1:C:287:PRO:HD3	1:C:298:VAL:CG2	2.40	0.51
1:B:79:GLN:O	1:B:80:GLU:HG2	2.11	0.51
1:B:263:LEU:HD22	1:B:263:LEU:H	1.75	0.51
1:C:125:LEU:HG	1:C:126:ARG:N	2.26	0.51
1:C:406:ASN:HD22	1:C:406:ASN:C	2.13	0.51
1:C:9:LEU:O	1:C:13:LEU:HD22	2.10	0.51
1:C:131:GLN:NE2	1:C:259:ILE:HD11	2.26	0.50
1:B:365:LEU:HD23	1:B:365:LEU:C	2.32	0.50

*Continued on next page...*

*Continued from previous page...*

Atom-1	Atom-2	Interatomic distance (Å)	Clash overlap (Å)
1:B:203:TYR:OH	1:B:279:GLN:HA	2.11	0.50
1:C:331:VAL:O	1:C:334:VAL:HG12	2.11	0.50
1:B:393:MSE:HE2	1:B:394:TYR:CE1	2.46	0.50
1:A:370:ILE:HG21	1:A:381:VAL:HG21	1.93	0.50
1:B:260:SER:OG	1:B:274:GLU:HB3	2.11	0.50
1:A:257:LYS:HE2	1:A:262:ASP:HA	1.93	0.50
1:B:163:LEU:N	1:B:163:LEU:HD22	2.26	0.50
1:C:51:LEU:HD23	1:C:63:LEU:HD13	1.93	0.50
1:A:129:PRO:HA	1:A:132:GLN:HG3	1.93	0.50
1:B:192:ARG:HD2	1:B:285:GLU:OE2	2.11	0.50
1:C:339:VAL:O	1:C:342:PRO:HD2	2.12	0.50
1:C:61:PRO:HG2	1:C:316:ILE:HG22	1.93	0.50
1:B:176:LEU:HB2	1:B:241:GLU:HG2	1.94	0.50
1:C:46:GLY:O	1:C:47:GLY:O	2.30	0.50
1:A:336:LEU:O	1:A:339:VAL:HG22	2.12	0.50
1:C:137:GLY:O	1:C:140:VAL:HG22	2.11	0.50
1:C:316:ILE:HG13	1:C:316:ILE:O	2.12	0.50
1:A:320:THR:HG21	2:A:506:1PE:H152	1.94	0.50
1:A:346:LYS:NZ	1:A:388:PHE:HZ	2.10	0.49
1:C:240:SER:O	1:C:243:ALA:HB3	2.11	0.49
1:A:122:THR:HG23	1:A:122:THR:O	2.12	0.49
1:A:25:ILE:HG23	1:B:488:LEU:HD22	1.94	0.49
1:C:134:ILE:HG22	1:C:135:VAL:N	2.27	0.49
1:C:34:GLU:O	1:C:38:ILE:HG12	2.12	0.49
1:B:386:TRP:CD1	1:B:450:LYS:HD3	2.47	0.49
1:C:153:GLU:HB2	1:C:295:TYR:CZ	2.46	0.49
1:B:190:ILE:HG21	1:B:285:GLU:HB2	1.92	0.49
1:B:359:GLU:CD	1:B:359:GLU:H	2.16	0.49
1:B:379:LYS:HD2	1:B:379:LYS:N	2.27	0.49
1:C:474:ASP:HB3	1:C:477:VAL:CG2	2.42	0.49
1:B:182:GLN:HG3	1:B:288:TYR:OH	2.13	0.49
1:A:458:LYS:HB2	1:A:467:TRP:CZ3	2.46	0.49
1:A:182:GLN:NE2	1:A:285:GLU:HA	2.28	0.49
1:A:435:ILE:HD12	1:A:448:GLY:HA3	1.94	0.49
1:A:337:ASN:OD1	1:A:356:LEU:HD13	2.12	0.49
1:B:229:LEU:O	1:B:232:VAL:HG22	2.13	0.49
1:A:356:LEU:HD23	1:A:363:TYR:HA	1.94	0.49
1:A:255:VAL:HG22	1:A:256:VAL:N	2.26	0.48
1:B:163:LEU:HB3	1:B:176:LEU:CD1	2.42	0.48
1:A:291:HIS:O	1:A:325:PRO:HD3	2.13	0.48
1:A:374:TYR:O	1:A:377:HIS:HB2	2.13	0.48

*Continued on next page...*

*Continued from previous page...*

Atom-1	Atom-2	Interatomic distance (Å)	Clash overlap (Å)
1:C:55:PRO:HG3	1:C:60:MSE:O	2.13	0.48
1:A:67:PHE:O	1:A:331:VAL:CG2	2.61	0.48
1:C:50:LEU:O	1:C:63:LEU:HD12	2.14	0.48
1:B:181:GLN:HB3	1:B:189:LEU:HB3	1.94	0.48
1:A:369:THR:HA	1:A:401:CYS:O	2.13	0.48
1:C:365:LEU:HD23	1:C:397:PHE:HB3	1.95	0.48
1:A:77:MSE:CE	1:A:233:THR:HG21	2.43	0.48
1:A:132:GLN:HE21	1:A:313:GLU:H	1.62	0.48
1:C:372:LYS:HD3	4:C:516:HOH:O	2.14	0.48
1:C:180:ARG:HH22	1:C:296:ASN:ND2	2.04	0.48
1:B:221:LEU:HB2	1:B:271:ILE:HG23	1.96	0.48
1:C:214:ARG:HD3	1:C:276:TYR:CD2	2.49	0.48
1:A:417:ILE:O	1:A:421:MSE:HB3	2.14	0.48
1:C:285:GLU:O	1:C:286:GLY:O	2.32	0.48
1:C:348:PHE:HB2	1:C:351:ILE:HG12	1.95	0.48
1:B:163:LEU:HD21	1:B:228:ILE:HG22	1.96	0.48
1:B:255:VAL:HG21	1:B:264:GLU:OE1	2.13	0.48
1:B:473:LYS:HG2	1:B:473:LYS:H	1.51	0.48
1:B:422:ASP:OD1	1:B:424:ALA:HB3	2.14	0.47
1:B:65:ASN:HA	1:B:328:GLU:HG3	1.94	0.47
1:B:360:GLY:O	1:B:361:CYS:HB2	2.13	0.47
1:A:343:ILE:O	1:A:346:LYS:HG2	2.13	0.47
1:A:233:THR:HG22	1:A:336:LEU:CD1	2.44	0.47
1:A:257:LYS:HG3	1:A:258:CYS:O	2.15	0.47
1:B:167:ARG:HE	1:B:174:GLN:HB3	1.79	0.47
1:A:212:GLY:H	1:A:279:GLN:NE2	2.13	0.47
1:C:196:HIS:O	1:C:201:LEU:HB2	2.14	0.47
1:C:53:GLU:HA	1:C:61:PRO:HB3	1.96	0.47
1:A:25:ILE:HD12	1:A:25:ILE:N	2.30	0.47
1:A:169:PRO:HB3	1:A:206:TRP:HA	1.96	0.47
1:C:386:TRP:CD1	1:C:450:LYS:HD3	2.50	0.47
1:A:95:LEU:HD22	1:A:239:LEU:HD22	1.96	0.47
1:B:355:TYR:CE2	1:B:408:ARG:HA	2.49	0.47
1:B:70:PRO:O	1:B:82:VAL:HG22	2.14	0.47
1:B:181:GLN:HA	1:B:190:ILE:O	2.15	0.47
1:B:334:VAL:CG2	1:B:358:PRO:HG3	2.44	0.47
1:B:40:ASP:HA	1:B:321:TYR:OH	2.14	0.47
1:C:135:VAL:HG23	1:C:309:ILE:HB	1.96	0.47
1:A:158:LEU:HD13	1:A:288:TYR:CE2	2.50	0.47
1:C:381:VAL:O	1:C:385:VAL:HG23	2.15	0.47
1:B:30:ASP:O	1:B:34:GLU:HB2	2.15	0.47

*Continued on next page...*

*Continued from previous page...*

Atom-1	Atom-2	Interatomic distance (Å)	Clash overlap (Å)
1:C:26:THR:O	1:C:54:ASN:HB3	2.15	0.47
1:B:347:GLN:HG3	1:B:388:PHE:CZ	2.50	0.47
1:C:63:LEU:HD21	1:C:66:LEU:HD22	1.97	0.47
1:B:28:PRO:HA	1:B:54:ASN:O	2.15	0.47
1:A:474:ASP:HB3	1:A:477:VAL:HG23	1.96	0.46
1:B:30:ASP:HB2	1:B:56:LYS:HD2	1.97	0.46
1:C:356:LEU:HD23	1:C:363:TYR:HA	1.97	0.46
1:A:224:ASP:CG	1:A:249:ARG:HH22	2.18	0.46
1:B:35:ILE:HG23	1:B:52:PHE:CE2	2.50	0.46
1:C:365:LEU:HD23	1:C:397:PHE:CB	2.45	0.46
1:A:444:VAL:CG1	1:A:447:LEU:HB3	2.38	0.46
1:A:27:LEU:CG	1:A:28:PRO:HD2	2.42	0.46
1:A:435:ILE:O	1:A:446:GLY:HA2	2.16	0.46
1:A:60:MSE:HE3	1:A:145:ILE:HA	1.96	0.46
1:B:86:ARG:NH1	1:B:338:GLU:OE1	2.48	0.46
1:A:79:GLN:HB3	1:A:84:ALA:HB3	1.96	0.46
1:C:161:TRP:HB2	1:C:320:THR:HG23	1.96	0.46
1:B:75:MSE:C	1:B:77:MSE:H	2.18	0.46
1:B:61:PRO:HG2	1:B:316:ILE:HG22	1.98	0.46
1:B:65:ASN:OD1	1:B:68:GLY:HA3	2.16	0.46
1:B:133:LYS:O	1:B:134:ILE:HG13	2.14	0.46
1:B:133:LYS:C	1:B:134:ILE:HG13	2.35	0.46
1:B:15:LEU:O	1:B:19:GLN:HG2	2.15	0.46
1:A:156:ALA:HB1	1:A:157:PRO:HD2	1.96	0.46
1:C:142:LEU:HD23	1:C:186:LYS:O	2.15	0.46
1:A:29:VAL:O	1:A:55:PRO:HA	2.16	0.46
1:C:96:LYS:HB3	1:C:96:LYS:NZ	2.30	0.46
1:C:192:ARG:CZ	1:C:194:LEU:HD11	2.46	0.46
1:A:421:MSE:HG3	1:A:426:ASP:HB2	1.98	0.45
1:A:147:ILE:CD1	1:A:159:ILE:HD11	2.46	0.45
1:C:166:THR:HG23	1:C:202:ASP:OD1	2.16	0.45
1:A:454:ASP:OD2	1:A:454:ASP:O	2.34	0.45
1:A:162:GLY:CA	1:A:221:LEU:HD13	2.46	0.45
1:B:344:LEU:HD12	1:B:388:PHE:CD2	2.52	0.45
1:B:224:ASP:O	1:B:228:ILE:HG12	2.16	0.45
1:A:8:ASP:CB	1:A:268:SER:HB2	2.46	0.45
1:A:120:MSE:SE	1:A:252:LYS:HG2	2.67	0.45
1:A:43:LEU:HD12	1:A:65:ASN:OD1	2.16	0.45
1:B:8:ASP:HB2	1:B:268:SER:HB2	1.99	0.45
1:C:421:MSE:CE	1:C:455:ALA:HB2	2.46	0.45
1:A:200:ALA:O	1:A:204:GLN:HG2	2.17	0.45

*Continued on next page...*

*Continued from previous page...*

Atom-1	Atom-2	Interatomic distance (Å)	Clash overlap (Å)
1:A:37:GLU:HG3	1:B:481:ILE:CD1	2.47	0.45
1:A:325:PRO:HA	1:A:326:PRO:C	2.37	0.45
1:A:8:ASP:HB2	1:A:268:SER:HB2	1.98	0.45
1:C:22:LEU:HD23	1:C:49:ALA:HB3	1.99	0.45
1:C:24:ARG:NH2	1:C:24:ARG:HG3	2.31	0.45
1:A:239:LEU:HD11	1:A:243:ALA:HB1	1.97	0.45
1:A:257:LYS:HE2	1:A:262:ASP:OD1	2.16	0.45
1:C:135:VAL:CG2	1:C:309:ILE:HB	2.47	0.45
1:B:481:ILE:O	1:B:485:TRP:N	2.47	0.45
1:B:160:THR:HB	1:B:320:THR:CG2	2.47	0.45
1:B:425:ARG:HD2	1:B:426:ASP:OD2	2.17	0.45
1:B:130:CYS:O	1:B:310:THR:OG1	2.35	0.44
1:C:169:PRO:HG2	1:C:170:HIS:H	1.81	0.44
1:B:232:VAL:O	1:B:336:LEU:HD13	2.17	0.44
1:C:393:MSE:HE3	1:C:394:TYR:CE2	2.52	0.44
1:C:210:HIS:N	1:C:211:PRO:CD	2.80	0.44
1:C:191:MSE:HG2	1:C:193:TRP:CZ2	2.52	0.44
1:C:431:GLU:O	1:C:432:ASN:HB2	2.17	0.44
1:C:141:ASP:CA	1:C:186:LYS:HG3	2.41	0.44
1:A:328:GLU:O	1:A:331:VAL:HG22	2.17	0.44
1:C:156:ALA:HB1	1:C:157:PRO:CD	2.48	0.44
1:A:123:LYS:HA	1:A:123:LYS:HE3	1.99	0.44
1:B:91:LEU:O	1:B:91:LEU:HD13	2.16	0.44
1:B:297:GLU:OE1	1:B:297:GLU:N	2.51	0.44
1:A:228:ILE:O	1:A:232:VAL:HG23	2.17	0.44
1:A:270:GLU:HG3	1:A:315:ALA:HB1	2.00	0.44
1:B:192:ARG:HG3	1:B:301:PHE:CE2	2.52	0.44
1:C:24:ARG:HD2	1:C:53:GLU:CD	2.37	0.44
1:B:298:VAL:HG12	1:B:299:ASP:N	2.33	0.44
1:B:141:ASP:N	1:B:186:LYS:HE2	2.33	0.44
1:A:32:HIS:O	1:A:34:GLU:N	2.51	0.44
1:A:82:VAL:HA	1:A:85:LEU:HD23	1.99	0.44
1:C:181:GLN:HA	1:C:190:ILE:O	2.17	0.44
1:C:276:TYR:HE2	1:C:278:GLU:HG2	1.82	0.44
1:B:73:VAL:O	1:B:77:MSE:HE3	2.18	0.44
1:B:130:CYS:HB3	1:B:269:ALA:O	2.18	0.44
1:C:182:GLN:OE1	1:C:285:GLU:HA	2.18	0.44
1:A:17:GLU:HB2	1:A:22:LEU:HD23	2.00	0.44
1:B:436:ASP:HB3	1:B:439:ASP:HB2	2.00	0.43
1:A:369:THR:HG23	1:A:407:ALA:HB2	2.00	0.43
1:B:348:PHE:HB2	1:B:351:ILE:HD12	2.00	0.43

*Continued on next page...*

*Continued from previous page...*

Atom-1	Atom-2	Interatomic distance (Å)	Clash overlap (Å)
1:A:481:ILE:HD13	1:B:37:GLU:HG3	2.00	0.43
1:C:442:SER:HB2	1:C:447:LEU:O	2.18	0.43
1:A:96:LYS:HG3	1:A:236:PRO:HB3	2.00	0.43
1:C:369:THR:HA	1:C:401:CYS:O	2.19	0.43
1:A:389:LEU:HD12	1:A:392:PHE:HE2	1.82	0.43
1:C:129:PRO:O	1:C:312:ARG:HG2	2.19	0.43
1:B:257:LYS:CE	1:B:262:ASP:HA	2.32	0.43
1:B:67:PHE:HB3	1:B:332:LEU:HD13	2.01	0.43
1:C:75:MSE:HA	1:C:79:GLN:O	2.18	0.43
1:A:346:LYS:HG3	1:A:347:GLN:N	2.34	0.43
1:B:410:TRP:HE3	1:B:414:ILE:HD12	1.84	0.43
1:C:176:LEU:HD12	1:C:231:ALA:HB2	1.99	0.43
1:A:140:VAL:HG23	1:A:187:ASN:HB3	2.01	0.43
1:B:79:GLN:C	1:B:81:ASP:N	2.71	0.43
1:A:85:LEU:HB3	1:A:339:VAL:HG12	2.00	0.43
1:B:66:LEU:HD22	1:B:318:HIS:CE1	2.46	0.43
1:C:359:GLU:CD	1:C:359:GLU:H	2.21	0.43
1:C:73:VAL:CG2	1:C:332:LEU:HD23	2.48	0.43
1:C:180:ARG:HH21	1:C:285:GLU:CD	2.22	0.43
1:C:221:LEU:HD23	1:C:271:ILE:HG12	2.01	0.43
1:C:125:LEU:C	1:C:126:ARG:HD3	2.40	0.43
1:A:386:TRP:NE1	1:A:450:LYS:HD3	2.33	0.43
1:C:125:LEU:HD13	1:C:254:GLU:OE2	2.19	0.43
1:B:145:ILE:HG23	1:B:146:PRO:HD2	2.01	0.43
1:B:225:PRO:O	1:B:229:LEU:HG	2.19	0.43
1:C:176:LEU:CD1	1:C:231:ALA:HB2	2.49	0.42
1:C:210:HIS:CD2	1:C:210:HIS:N	2.86	0.42
1:A:357:PRO:HA	1:A:358:PRO:HD3	1.85	0.42
1:A:182:GLN:HE22	1:A:285:GLU:HA	1.84	0.42
1:B:326:PRO:HB3	1:B:358:PRO:HB2	2.00	0.42
1:A:324:ARG:HD2	4:A:530:HOH:O	2.18	0.42
1:A:397:PHE:CE1	1:A:451:MSE:HE2	2.54	0.42
1:C:256:VAL:HG22	1:C:257:LYS:N	2.33	0.42
1:C:27:LEU:HD12	1:C:27:LEU:N	2.35	0.42
1:B:48:PRO:HA	1:B:72:ARG:HH12	1.82	0.42
1:C:43:LEU:C	1:C:43:LEU:HD23	2.40	0.42
1:C:386:TRP:NE1	1:C:450:LYS:HD3	2.35	0.42
1:C:178:ILE:HD13	1:C:232:VAL:HG13	2.00	0.42
1:C:140:VAL:HG21	1:C:187:ASN:CB	2.40	0.42
1:C:215:PHE:O	1:C:217:VAL:HG23	2.20	0.42
1:A:158:LEU:HD13	1:A:288:TYR:CZ	2.54	0.42

*Continued on next page...*

*Continued from previous page...*

Atom-1	Atom-2	Interatomic distance (Å)	Clash overlap (Å)
1:A:328:GLU:N	1:A:329:PRO:CD	2.83	0.42
1:C:383:MSE:HA	1:C:383:MSE:HE2	2.01	0.42
1:C:406:ASN:C	1:C:406:ASN:ND2	2.73	0.42
1:A:141:ASP:OD2	1:A:143:ASN:HB2	2.18	0.42
1:A:191:MSE:HG2	1:A:193:TRP:CZ2	2.54	0.42
1:C:270:GLU:HA	1:C:312:ARG:HD3	2.01	0.42
1:B:42:THR:HG22	1:B:47:GLY:HA3	2.01	0.42
1:A:397:PHE:HD1	1:A:451:MSE:HE2	1.83	0.42
1:A:75:MSE:HG2	1:A:80:GLU:HA	2.00	0.42
1:C:193:TRP:CB	1:C:200:ALA:HB2	2.50	0.42
1:B:258:CYS:HB3	1:B:274:GLU:CD	2.39	0.42
1:B:128:ALA:HB1	1:B:129:PRO:HD2	2.02	0.42
1:B:370:ILE:HD12	1:B:372:LYS:N	2.35	0.42
1:A:77:MSE:HE1	1:A:233:THR:HG21	2.02	0.42
1:B:180:ARG:HE	1:B:192:ARG:HD2	1.84	0.42
1:B:187:ASN:N	1:B:187:ASN:ND2	2.68	0.42
1:A:440:PHE:HA	1:B:465:ARG:NH2	2.35	0.42
1:A:442:SER:O	1:B:465:ARG:HD3	2.20	0.42
1:B:459:TRP:HB3	1:B:460:PRO:CD	2.48	0.42
1:B:221:LEU:O	1:B:270:GLU:HB2	2.20	0.42
1:B:390:ARG:HG2	1:B:390:ARG:HH11	1.85	0.41
1:B:147:ILE:HD12	1:B:159:ILE:CG1	2.49	0.41
1:B:297:GLU:CD	1:B:297:GLU:H	2.23	0.41
1:A:481:ILE:O	1:A:485:TRP:HB2	2.21	0.41
1:B:182:GLN:HB2	1:B:288:TYR:HE2	1.85	0.41
1:B:393:MSE:HE2	1:B:394:TYR:CZ	2.54	0.41
1:A:289:GLY:HA2	1:A:295:TYR:HA	2.03	0.41
1:C:165:VAL:HG12	1:C:218:SER:O	2.20	0.41
1:C:140:VAL:CG2	1:C:187:ASN:HB3	2.39	0.41
1:C:32:HIS:O	1:C:34:GLU:N	2.51	0.41
1:A:324:ARG:HH12	1:B:412:ASP:CG	2.24	0.41
1:A:373:GLN:HG2	1:A:377:HIS:CE1	2.55	0.41
1:B:131:GLN:NE2	1:B:259:ILE:HG13	2.35	0.41
1:B:55:PRO:HG3	1:B:60:MSE:O	2.20	0.41
1:B:247:LEU:N	1:B:247:LEU:HD22	2.35	0.41
1:B:176:LEU:HB2	1:B:241:GLU:CG	2.51	0.41
1:C:195:SER:C	1:C:197:ARG:H	2.24	0.41
1:B:217:VAL:HG12	1:B:218:SER:N	2.36	0.41
1:A:320:THR:OG1	1:A:321:TYR:N	2.52	0.41
1:C:288:TYR:O	1:C:296:ASN:OD1	2.39	0.41
1:C:82:VAL:C	1:C:85:LEU:HD23	2.40	0.41

*Continued on next page...*



*Continued from previous page...*

Atom-1	Atom-2	Interatomic distance (Å)	Clash overlap (Å)
1:C:459:TRP:HB3	1:C:460:PRO:HD2	2.02	0.41
1:A:365:LEU:C	1:A:365:LEU:HD23	2.41	0.41
1:B:141:ASP:H	1:B:186:LYS:HE2	1.86	0.41
1:B:133:LYS:HD2	1:B:313:GLU:OE2	2.21	0.41
1:C:136:SER:HA	1:C:307:THR:O	2.20	0.41
1:A:353:ASP:OD1	1:A:354:PHE:N	2.54	0.41
1:B:162:GLY:HA2	1:B:220:ALA:O	2.21	0.41
1:B:129:PRO:C	1:B:131:GLN:N	2.74	0.41
1:A:368:VAL:HG11	1:A:381:VAL:CG1	2.51	0.41
1:C:6:TYR:HB3	1:C:15:LEU:HD11	2.03	0.41
1:B:422:ASP:O	1:B:423:PRO:C	2.59	0.41
1:B:153:GLU:CB	1:B:295:TYR:CZ	3.00	0.41
1:B:86:ARG:HD2	1:B:342:PRO:HD3	2.03	0.41
1:A:68:GLY:H	1:A:72:ARG:HH21	1.68	0.41
1:C:221:LEU:HD22	1:C:221:LEU:N	2.36	0.41
1:C:215:PHE:O	1:C:276:TYR:HA	2.20	0.41
1:C:191:MSE:O	1:C:301:PHE:HB3	2.21	0.41
1:A:379:LYS:HD2	1:A:379:LYS:H	1.86	0.41
1:C:357:PRO:HG3	1:C:365:LEU:HD12	2.03	0.41
1:C:474:ASP:HA	1:C:475:PRO:HD2	1.84	0.41
1:B:160:THR:HB	1:B:320:THR:HG23	2.03	0.41
1:A:156:ALA:HB1	1:A:157:PRO:CD	2.51	0.41
1:C:298:VAL:CG1	1:C:299:ASP:N	2.83	0.41
1:A:421:MSE:HE2	1:B:397:PHE:HZ	1.85	0.41
1:C:425:ARG:HE	1:C:426:ASP:CG	2.23	0.41
1:A:215:PHE:HA	1:A:216:PRO:HD3	1.95	0.40
1:C:210:HIS:H	1:C:211:PRO:HD3	1.84	0.40
1:C:54:ASN:C	1:C:54:ASN:ND2	2.74	0.40
1:A:141:ASP:HB2	1:A:186:LYS:HE3	2.03	0.40
1:C:426:ASP:OD1	1:C:458:LYS:HE2	2.21	0.40
1:B:391:GLN:H	1:B:391:GLN:CD	2.24	0.40
1:B:29:VAL:O	1:B:29:VAL:HG13	2.21	0.40
1:C:9:LEU:O	1:C:12:PHE:HB3	2.21	0.40
1:B:147:ILE:HA	1:B:317:TYR:CE2	2.56	0.40
1:B:218:SER:HA	1:B:273:LEU:O	2.22	0.40
1:C:231:ALA:HA	1:C:241:GLU:OE2	2.21	0.40
1:B:79:GLN:O	1:B:81:ASP:N	2.55	0.40
1:B:121:PRO:O	1:B:252:LYS:HB2	2.21	0.40
1:C:35:ILE:HG23	1:C:52:PHE:CE1	2.56	0.40
1:C:278:GLU:HG3	4:C:520:HOH:O	2.20	0.40
1:C:7:ASN:O	1:C:8:ASP:CB	2.70	0.40

*Continued on next page...*

*Continued from previous page...*

Atom-1	Atom-2	Interatomic distance (Å)	Clash overlap (Å)
1:A:373:GLN:HG3	1:A:374:TYR:CD1	2.56	0.40
1:B:10:ARG:NH2	1:B:314:ASP:O	2.55	0.40

There are no symmetry-related clashes.

## 5.3 Torsion angles [i](#)

### 5.3.1 Protein backbone [i](#)

In the following table, the Percentiles column shows the percent Ramachandran outliers of the chain as a percentile score with respect to all X-ray entries followed by that with respect to entries of similar resolution.

The Analysed column shows the number of residues for which the backbone conformation was analysed, and the total number of residues.

Mol	Chain	Analysed	Favoured	Allowed	Outliers	Percentiles	
1	A	470/505 (93%)	426 (91%)	36 (8%)	8 (2%)	11	38
1	B	449/505 (89%)	392 (87%)	42 (9%)	15 (3%)	5	20
1	C	450/505 (89%)	401 (89%)	39 (9%)	10 (2%)	8	31
All	All	1369/1515 (90%)	1219 (89%)	117 (8%)	33 (2%)	7	29

All (33) Ramachandran outliers are listed below:

Mol	Chain	Res	Type
1	A	33	LEU
1	A	47	GLY
1	B	33	LEU
1	B	194	LEU
1	C	33	LEU
1	C	47	GLY
1	B	47	GLY
1	B	77	MSE
1	B	124	ARG
1	B	363	TYR
1	C	8	ASP
1	C	286	GLY
1	C	388	PHE
1	A	195	SER
1	A	388	PHE

*Continued on next page...*

*Continued from previous page...*

Mol	Chain	Res	Type
1	B	92	LEU
1	B	121	PRO
1	B	130	CYS
1	B	140	VAL
1	B	424	ALA
1	C	363	TYR
1	A	137	GLY
1	A	423	PRO
1	B	141	ASP
1	B	388	PHE
1	B	195	SER
1	B	80	GLU
1	C	140	VAL
1	C	198	GLY
1	C	423	PRO
1	A	162	GLY
1	C	199	GLY
1	A	98	PRO

### 5.3.2 Protein sidechains ⓘ

In the following table, the Percentiles column shows the percent sidechain outliers of the chain as a percentile score with respect to all X-ray entries followed by that with respect to entries of similar resolution.

The Analysed column shows the number of residues for which the sidechain conformation was analysed, and the total number of residues.

Mol	Chain	Analysed	Rotameric	Outliers	Percentiles	
1	A	402/417 (96%)	366 (91%)	36 (9%)	12	34
1	B	384/417 (92%)	356 (93%)	28 (7%)	17	45
1	C	385/417 (92%)	359 (93%)	26 (7%)	20	49
All	All	1171/1251 (94%)	1081 (92%)	90 (8%)	16	42

All (90) residues with a non-rotameric sidechain are listed below:

Mol	Chain	Res	Type
1	A	9	LEU
1	A	53	GLU
1	A	54	ASN
1	A	96	LYS

*Continued on next page...*

*Continued from previous page...*

Mol	Chain	Res	Type
1	A	97	GLU
1	A	99	GLU
1	A	138	ASP
1	A	139	ASP
1	A	163	LEU
1	A	170	HIS
1	A	172	GLU
1	A	201	LEU
1	A	251	THR
1	A	253	THR
1	A	277	ILE
1	A	279	GLN
1	A	285	GLU
1	A	303	VAL
1	A	316	ILE
1	A	324	ARG
1	A	328	GLU
1	A	337	ASN
1	A	344	LEU
1	A	364	ARG
1	A	370	ILE
1	A	379	LYS
1	A	390	ARG
1	A	391	GLN
1	A	395	THR
1	A	405	VAL
1	A	408	ARG
1	A	412	ASP
1	A	437	TYR
1	A	453	LEU
1	A	464	GLN
1	A	466	GLU
1	B	10	ARG
1	B	18	GLN
1	B	54	ASN
1	B	124	ARG
1	B	139	ASP
1	B	160	THR
1	B	171	LYS
1	B	176	LEU
1	B	187	ASN
1	B	197	ARG

*Continued on next page...*

*Continued from previous page...*

Mol	Chain	Res	Type
1	B	271	ILE
1	B	277	ILE
1	B	297	GLU
1	B	303	VAL
1	B	310	THR
1	B	328	GLU
1	B	337	ASN
1	B	347	GLN
1	B	363	TYR
1	B	379	LYS
1	B	391	GLN
1	B	412	ASP
1	B	429	LEU
1	B	437	TYR
1	B	464	GLN
1	B	465	ARG
1	B	466	GLU
1	B	473	LYS
1	C	11	ASP
1	C	26	THR
1	C	37	GLU
1	C	54	ASN
1	C	125	LEU
1	C	130	CYS
1	C	138	ASP
1	C	140	VAL
1	C	194	LEU
1	C	213	GLU
1	C	247	LEU
1	C	271	ILE
1	C	310	THR
1	C	313	GLU
1	C	322	THR
1	C	324	ARG
1	C	344	LEU
1	C	362	SER
1	C	391	GLN
1	C	395	THR
1	C	406	ASN
1	C	408	ARG
1	C	412	ASP
1	C	425	ARG

*Continued on next page...*

*Continued from previous page...*

Mol	Chain	Res	Type
1	C	429	LEU
1	C	453	LEU

Some sidechains can be flipped to improve hydrogen bonding and reduce clashes. All (34) such sidechains are listed below:

Mol	Chain	Res	Type
1	A	54	ASN
1	A	132	GLN
1	A	182	GLN
1	A	196	HIS
1	A	279	GLN
1	A	318	HIS
1	A	391	GLN
1	A	406	ASN
1	A	411	ASN
1	A	464	GLN
1	B	32	HIS
1	B	54	ASN
1	B	175	ASN
1	B	182	GLN
1	B	187	ASN
1	B	204	GLN
1	B	279	GLN
1	B	296	ASN
1	B	318	HIS
1	B	406	ASN
1	B	411	ASN
1	B	457	ASN
1	B	492	ASN
1	C	18	GLN
1	C	19	GLN
1	C	32	HIS
1	C	54	ASN
1	C	65	ASN
1	C	204	GLN
1	C	210	HIS
1	C	279	GLN
1	C	391	GLN
1	C	406	ASN
1	C	464	GLN

### 5.3.3 RNA ⓘ

There are no RNA molecules in this entry.

## 5.4 Non-standard residues in protein, DNA, RNA chains ⓘ

There are no non-standard protein/DNA/RNA residues in this entry.

## 5.5 Carbohydrates ⓘ

There are no carbohydrates in this entry.

## 5.6 Ligand geometry ⓘ

6 ligands are modelled in this entry.

In the following table, the Counts columns list the number of bonds (or angles) for which Mogul statistics could be retrieved, the number of bonds (or angles) that are observed in the model and the number of bonds (or angles) that are defined in the chemical component dictionary. The Link column lists molecule types, if any, to which the group is linked. The Z score for a bond length (or angle) is the number of standard deviations the observed value is removed from the expected value. A bond length (or angle) with  $|Z| > 2$  is considered an outlier worth inspection. RMSZ is the root-mean-square of all Z scores of the bond lengths (or angles).

Mol	Type	Chain	Res	Link	Bond lengths			Bond angles		
					Counts	RMSZ	$\# Z  > 2$	Counts	RMSZ	$\# Z  > 2$
2	1PE	A	506	-	15,15,15	0.40	0	14,14,14	0.64	0
3	EDO	A	507	-	3,3,3	0.71	0	2,2,2	0.74	0
2	1PE	B	506	-	15,15,15	0.38	0	14,14,14	0.58	0
2	1PE	C	506	-	15,15,15	0.49	0	14,14,14	0.52	0
3	EDO	C	507	-	3,3,3	0.73	0	2,2,2	0.85	0
3	EDO	C	508	-	3,3,3	0.53	0	2,2,2	0.59	0

In the following table, the Chirals column lists the number of chiral outliers, the number of chiral centers analysed, the number of these observed in the model and the number defined in the chemical component dictionary. Similar counts are reported in the Torsion and Rings columns. '-' means no outliers of that kind were identified.

Mol	Type	Chain	Res	Link	Chirals	Torsions	Rings
2	1PE	A	506	-	-	0/13/13/13	0/0/0/0
3	EDO	A	507	-	-	0/1/1/1	0/0/0/0
2	1PE	B	506	-	-	0/13/13/13	0/0/0/0
2	1PE	C	506	-	-	0/13/13/13	0/0/0/0

*Continued on next page...*

*Continued from previous page...*

Mol	Type	Chain	Res	Link	Chirals	Torsions	Rings
3	EDO	C	507	-	-	0/1/1/1	0/0/0/0
3	EDO	C	508	-	-	0/1/1/1	0/0/0/0

There are no bond length outliers.

There are no bond angle outliers.

There are no chirality outliers.

There are no torsion outliers.

There are no ring outliers.

2 monomers are involved in 2 short contacts:

Mol	Chain	Res	Type	Clashes	Symm-Clashes
2	A	506	1PE	1	0
2	C	506	1PE	1	0

## 5.7 Other polymers [i](#)

There are no such residues in this entry.

## 5.8 Polymer linkage issues [i](#)

There are no chain breaks in this entry.



## 6 Fit of model and data ⓘ

### 6.1 Protein, DNA and RNA chains ⓘ

In the following table, the column labelled ‘#RSRZ> 2’ contains the number (and percentage) of RSRZ outliers, followed by percent RSRZ outliers for the chain as percentile scores relative to all X-ray entries and entries of similar resolution. The OWAB column contains the minimum, median, 95<sup>th</sup> percentile and maximum values of the occupancy-weighted average B-factor per residue. The column labelled ‘Q< 0.9’ lists the number of (and percentage) of residues with an average occupancy less than 0.9.

Mol	Chain	Analysed	<RSRZ>	#RSRZ>2	OWAB(Å <sup>2</sup> )	Q<0.9
1	A	463/505 (91%)	-0.13	5 (1%) 82 80	10, 32, 61, 77	0
1	B	444/505 (87%)	0.08	16 (3%) 46 38	11, 45, 80, 97	0
1	C	446/505 (88%)	-0.03	9 (2%) 68 64	12, 42, 79, 96	0
All	All	1353/1515 (89%)	-0.03	30 (2%) 65 60	10, 39, 76, 97	0

All (30) RSRZ outliers are listed below:

Mol	Chain	Res	Type	RSRZ
1	B	195	SER	4.8
1	B	492	ASN	3.6
1	B	209	ALA	3.5
1	C	94	PHE	3.1
1	B	207	CYS	3.1
1	A	121	PRO	3.1
1	B	203	TYR	3.0
1	B	213	GLU	3.0
1	C	207	CYS	3.0
1	B	244	PHE	2.9
1	B	204	GLN	2.9
1	B	241	GLU	2.7
1	A	6	TYR	2.6
1	B	169	PRO	2.6
1	B	194	LEU	2.6
1	C	7	ASN	2.6
1	B	210	HIS	2.5
1	B	42	THR	2.5
1	C	80	GLU	2.4
1	C	91	LEU	2.4
1	A	173	ARG	2.3
1	C	251	THR	2.3
1	C	209	ALA	2.3

*Continued on next page...*

*Continued from previous page...*

Mol	Chain	Res	Type	RSRZ
1	B	250	GLY	2.2
1	A	485	TRP	2.2
1	C	167	ARG	2.2
1	B	7	ASN	2.2
1	B	437	TYR	2.1
1	C	247	LEU	2.1
1	A	18	GLN	2.0

## 6.2 Non-standard residues in protein, DNA, RNA chains [i](#)

There are no non-standard protein/DNA/RNA residues in this entry.

## 6.3 Carbohydrates [i](#)

There are no carbohydrates in this entry.

## 6.4 Ligands [i](#)

In the following table, the Atoms column lists the number of modelled atoms in the group and the number defined in the chemical component dictionary. LLDF column lists the quality of electron density of the group with respect to its neighbouring residues in protein, DNA or RNA chains. The B-factors column lists the minimum, median, 95<sup>th</sup> percentile and maximum values of B factors of atoms in the group. The column labelled 'Q< 0.9' lists the number of atoms with occupancy less than 0.9.

Mol	Type	Chain	Res	Atoms	RSCC	RSR	LLDF	B-factors(Å <sup>2</sup> )	Q<0.9
2	1PE	B	506	16/16	0.84	0.36	10.40	67,71,78,78	0
2	1PE	A	506	16/16	0.88	0.25	3.60	52,54,57,58	0
2	1PE	C	506	16/16	0.80	0.23	3.49	70,72,74,74	0
3	EDO	A	507	4/4	0.72	0.25	2.34	40,40,42,43	0
3	EDO	C	507	4/4	0.89	0.21	1.30	47,50,50,50	0
3	EDO	C	508	4/4	0.91	0.19	-	34,37,38,39	0

## 6.5 Other polymers [i](#)

There are no such residues in this entry.