



# Full wwPDB X-ray Structure Validation Report ⓘ

Feb 1, 2016 – 05:26 PM GMT

PDB ID : 4ID5  
Title : HIV-1 reverse transcriptase with bound fragment at the RNase H primer grip site  
Authors : Bauman, J.D.; Patel, D.; Arnold, E.  
Deposited on : 2012-12-11  
Resolution : 1.95 Å(reported)

This is a Full wwPDB X-ray Structure Validation Report for a publicly released PDB entry.  
We welcome your comments at [validation@mail.wwpdb.org](mailto:validation@mail.wwpdb.org)  
A user guide is available at  
<http://wwpdb.org/validation/2016/XrayValidationReportHelp>  
with specific help available everywhere you see the ⓘ symbol.

---

The following versions of software and data (see [references ⓘ](#)) were used in the production of this report:

MolProbity : 4.02b-467  
Mogul : 1.7 (RC4), CSD as536be (2015)  
Xtriage (Phenix) : 1.9-1692  
EDS : rb-20026688  
Percentile statistics : 20151230.v01 (using entries in the PDB archive December 30th 2015)  
Refmac : 5.8.0135  
CCP4 : 6.5.0  
Ideal geometry (proteins) : Engh & Huber (2001)  
Ideal geometry (DNA, RNA) : Parkinson et al. (1996)  
Validation Pipeline (wwPDB-VP) : trunk26865

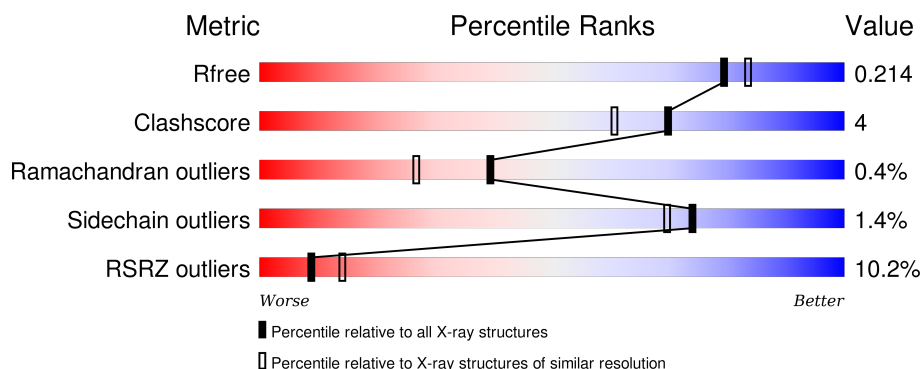
# 1 Overall quality at a glance ⓘ

The following experimental techniques were used to determine the structure:

## *X-RAY DIFFRACTION*

The reported resolution of this entry is 1.95 Å.

Percentile scores (ranging between 0-100) for global validation metrics of the entry are shown in the following graphic. The table shows the number of entries on which the scores are based.



Metric	Whole archive (#Entries)	Similar resolution (#Entries, resolution range(Å))
$R_{free}$	91344	1833 (1.96-1.96)
Clashscore	102246	1953 (1.96-1.96)
Ramachandran outliers	100387	1936 (1.96-1.96)
Sidechain outliers	100360	1936 (1.96-1.96)
RSRZ outliers	91569	1835 (1.96-1.96)

The table below summarises the geometric issues observed across the polymeric chains and their fit to the electron density. The red, orange, yellow and green segments on the lower bar indicate the fraction of residues that contain outliers for  $\geq 3$ , 2, 1 and 0 types of geometric quality criteria. A grey segment represents the fraction of residues that are not modelled. The numeric value for each fraction is indicated below the corresponding segment, with a dot representing fractions  $\leq 5\%$ . The upper red bar (where present) indicates the fraction of residues that have poor fit to the electron density. The numeric value is given above the bar.

Mol	Chain	Length	Quality of chain
1	A	557	<div> <div>8%</div> <div>91%</div> <div>8%</div> </div>
2	B	429	<div> <div>13%</div> <div>85%</div> <div>10%</div> <div>.</div> </div>

The following table lists non-polymeric compounds, carbohydrate monomers and non-standard residues in protein, DNA, RNA chains that are outliers for geometric or electron-density-fit criteria:

Mol	Type	Chain	Res	Chirality	Geometry	Clashes	Electron density
4	DMS	A	603	-	-	-	X
4	DMS	A	605	-	-	-	X
4	DMS	A	607	-	-	-	X
4	DMS	B	503	-	-	-	X
4	DMS	B	504	-	-	-	X
4	DMS	B	505	-	-	X	-
4	DMS	B	509	-	-	-	X
4	DMS	B	510	-	-	-	X

## 2 Entry composition

There are 7 unique types of molecules in this entry. The entry contains 8944 atoms, of which 0 are hydrogens and 0 are deuteriums.

In the tables below, the ZeroOcc column contains the number of atoms modelled with zero occupancy, the AltConf column contains the number of residues with at least one atom in alternate conformation and the Trace column contains the number of residues modelled with at most 2 atoms.

- Molecule 1 is a protein called Reverse transcriptase/ribonuclease H.

Mol	Chain	Residues	Atoms					ZeroOcc	AltConf	Trace
1	A	556	Total	C	N	O	S	9	1	0
			4525	2928	752	837	8			

There are 5 discrepancies between the modelled and reference sequences:

Chain	Residue	Modelled	Actual	Comment	Reference
A	-1	MET	-	EXPRESSION TAG	UNP P03366
A	0	VAL	-	EXPRESSION TAG	UNP P03366
A	172	ALA	LYS	ENGINEERED MUTATION	UNP P03366
A	173	ALA	LYS	ENGINEERED MUTATION	UNP P03366
A	280	SER	CYS	ENGINEERED MUTATION	UNP P03366

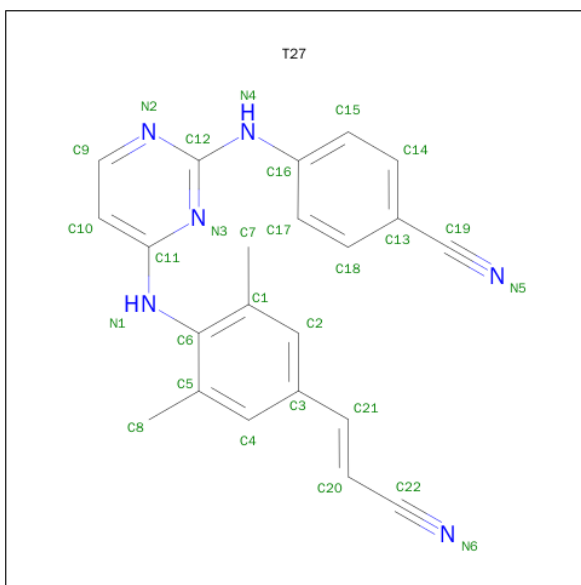
- Molecule 2 is a protein called P51 RT.

Mol	Chain	Residues	Atoms					ZeroOcc	AltConf	Trace
2	B	412	Total	C	N	O	S	0	1	0
			3418	2228	565	618	7			

There are 2 discrepancies between the modelled and reference sequences:

Chain	Residue	Modelled	Actual	Comment	Reference
B	0	GLY	-	EXPRESSION TAG	UNP P03366
B	280	SER	CYS	ENGINEERED MUTATION	UNP P03366

- Molecule 3 is 4-{4-({4-[(E)-2-CYANOETHENYL]-2,6-DIMETHYLPHENYL}AMINO)PYRIMIDIN-2-YL}AMINO}BENZONITRILE (three-letter code: T27) (formula: C<sub>22</sub>H<sub>18</sub>N<sub>6</sub>).



Mol	Chain	Residues	Atoms			ZeroOcc	AltConf
3	A	1	Total	C	N	0	0
			28	22	6		

- Molecule 4 is DIMETHYL SULFOXIDE (three-letter code: DMS) (formula:  $C_2H_6OS$ ).



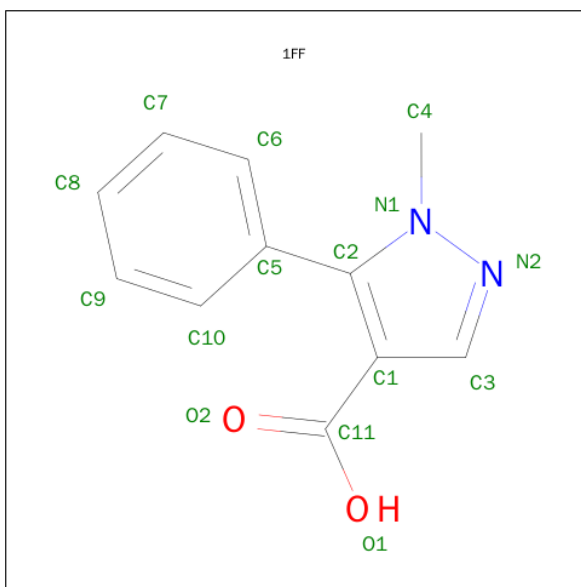
Mol	Chain	Residues	Atoms				ZeroOcc	AltConf
4	A	1	Total	C	O	S	0	0
			4	2	1	1		
4	A	1	Total	C	O	S	0	0
			4	2	1	1		
4	A	1	Total	C	O	S	0	0
			4	2	1	1		

*Continued on next page...*

*Continued from previous page...*

Mol	Chain	Residues	Atoms				ZeroOcc	AltConf
4	A	1	Total 4	C 2	O 1	S 1	0	0
4	A	1	Total 4	C 2	O 1	S 1	0	0
4	A	1	Total 4	C 2	O 1	S 1	0	0
4	A	1	Total 4	C 2	O 1	S 1	0	0
4	B	1	Total 4	C 2	O 1	S 1	0	0
4	B	1	Total 4	C 2	O 1	S 1	0	0
4	B	1	Total 4	C 2	O 1	S 1	0	0
4	B	1	Total 4	C 2	O 1	S 1	0	0
4	B	1	Total 4	C 2	O 1	S 1	0	0
4	B	1	Total 4	C 2	O 1	S 1	0	0
4	B	1	Total 4	C 2	O 1	S 1	0	0
4	B	1	Total 4	C 2	O 1	S 1	0	0
4	B	1	Total 4	C 2	O 1	S 1	0	0
4	B	1	Total 4	C 2	O 1	S 1	0	0
4	B	1	Total 4	C 2	O 1	S 1	0	0

- Molecule 5 is 1-METHYL-5-PHENYL-1H-PYRAZOLE-4-CARBOXYLIC ACID (three-letter code: 1FF) (formula: C<sub>11</sub>H<sub>10</sub>N<sub>2</sub>O<sub>2</sub>).



Mol	Chain	Residues	Atoms				ZeroOcc	AltConf
5	A	1	Total	C	N	O	0	0
			15	11	2	2		

- Molecule 6 is MAGNESIUM ION (three-letter code: MG) (formula: Mg).

Mol	Chain	Residues	Atoms		ZeroOcc	AltConf
6	A	1	Total	Mg	0	0
			1	1		

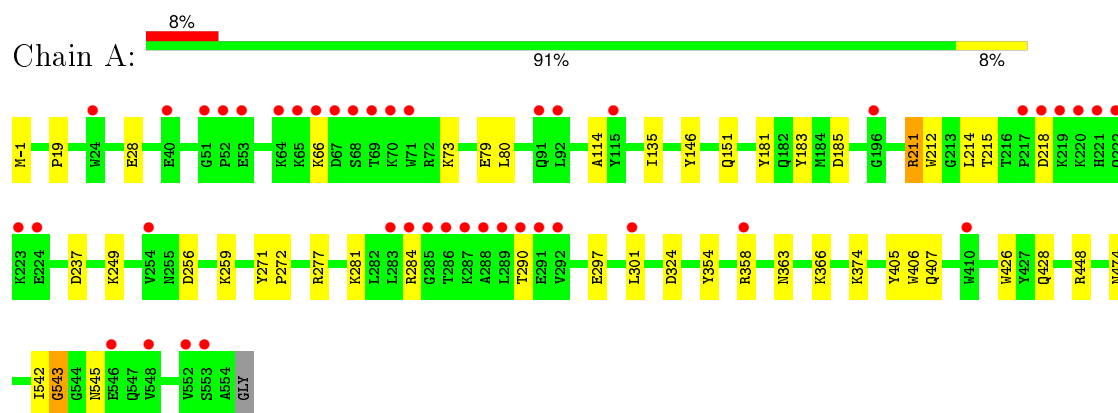
- Molecule 7 is water.

Mol	Chain	Residues	Atoms		ZeroOcc	AltConf
7	A	536	Total	O	0	0
			536	536		
7	B	353	Total	O	0	0
			353	353		

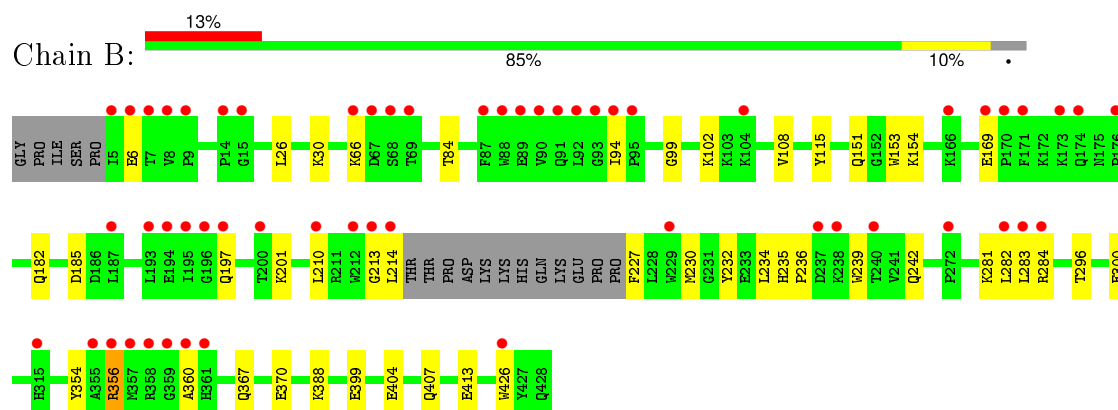
### 3 Residue-property plots [i](#)

These plots are drawn for all protein, RNA and DNA chains in the entry. The first graphic for a chain summarises the proportions of errors displayed in the second graphic. The second graphic shows the sequence view annotated by issues in geometry and electron density. Residues are color-coded according to the number of geometric quality criteria for which they contain at least one outlier: green = 0, yellow = 1, orange = 2 and red = 3 or more. A red dot above a residue indicates a poor fit to the electron density ( $RSRZ > 2$ ). Stretches of 2 or more consecutive residues without any outlier are shown as a green connector. Residues present in the sample, but not in the model, are shown in grey.

- Molecule 1: Reverse transcriptase/ribonuclease H



- Molecule 2: P51 RT





## 4 Data and refinement statistics

Property	Value	Source
Space group	C 1 2 1	Depositor
Cell constants a, b, c, $\alpha$ , $\beta$ , $\gamma$	162.05Å 72.87Å 109.15Å 90.00° 100.47° 90.00°	Depositor
Resolution (Å)	29.20 – 1.95 29.20 – 1.85	Depositor EDS
% Data completeness (in resolution range)	99.7 (29.20-1.95) 91.6 (29.20-1.85)	Depositor EDS
$R_{merge}$	0.06	Depositor
$R_{sym}$	(Not available)	Depositor
$\langle I/\sigma(I) \rangle$ <sup>1</sup>	1.92 (at 1.85Å)	Xtriage
Refinement program	PHENIX (phenix.refine: 1.8_1069)	Depositor
R, $R_{free}$	0.187 , 0.209 0.194 , 0.214	Depositor DCC
$R_{free}$ test set	1841 reflections (2.19%)	DCC
Wilson B-factor (Å <sup>2</sup> )	26.6	Xtriage
Anisotropy	0.094	Xtriage
Bulk solvent $k_{sol}$ (e/Å <sup>3</sup> ), $B_{sol}$ (Å <sup>2</sup> )	0.35 , 50.4	EDS
Estimated twinning fraction	No twinning to report.	Xtriage
L-test for twinning <sup>2</sup>	$\langle  L  \rangle = 0.50$ , $\langle L^2 \rangle = 0.33$	Xtriage
Outliers	0 of 106358 reflections	Xtriage
$F_o, F_c$ correlation	0.96	EDS
Total number of atoms	8944	wwPDB-VP
Average B, all atoms (Å <sup>2</sup> )	41.0	wwPDB-VP

Xtriage's analysis on translational NCS is as follows: *The largest off-origin peak in the Patterson function is 4.10% of the height of the origin peak. No significant pseudotranslation is detected.*

<sup>1</sup>Intensities estimated from amplitudes.

<sup>2</sup>Theoretical values of  $\langle |L| \rangle$ ,  $\langle L^2 \rangle$  for acentric reflections are 0.5, 0.375 respectively for untwinned datasets, and 0.333, 0.2 for perfectly twinned datasets.

## 5 Model quality

### 5.1 Standard geometry

Bond lengths and bond angles in the following residue types are not validated in this section: MG, DMS, 1FF, T27

The Z score for a bond length (or angle) is the number of standard deviations the observed value is removed from the expected value. A bond length (or angle) with  $|Z| > 5$  is considered an outlier worth inspection. RMSZ is the root-mean-square of all Z scores of the bond lengths (or angles).

Mol	Chain	Bond lengths		Bond angles	
		RMSZ	$\# Z  > 5$	RMSZ	$\# Z  > 5$
1	A	0.38	0/4643	0.52	0/6311
2	B	0.37	0/3516	0.53	0/4776
All	All	0.37	0/8159	0.52	0/11087

There are no bond length outliers.

There are no bond angle outliers.

There are no chirality outliers.

There are no planarity outliers.

### 5.2 Too-close contacts

In the following table, the Non-H and H(model) columns list the number of non-hydrogen atoms and hydrogen atoms in the chain respectively. The H(added) column lists the number of hydrogen atoms added and optimized by MolProbity. The Clashes column lists the number of clashes within the asymmetric unit, whereas Symm-Clashes lists symmetry related clashes.

Mol	Chain	Non-H	H(model)	H(added)	Clashes	Symm-Clashes
1	A	4525	0	4579	35	0
2	B	3418	0	3447	35	0
3	A	28	0	18	1	0
4	A	28	0	42	11	0
4	B	40	0	60	12	0
5	A	15	0	9	0	0
6	A	1	0	0	0	0
7	A	536	0	0	4	0
7	B	353	0	0	6	0
All	All	8944	0	8155	72	0

The all-atom clashscore is defined as the number of clashes found per 1000 atoms (including

hydrogen atoms). The all-atom clashscore for this structure is 4.

All (72) close contacts within the same asymmetric unit are listed below, sorted by their clash magnitude.

Atom-1	Atom-2	Interatomic distance (Å)	Clash overlap (Å)
2:B:26:LEU:H	4:B:503:DMS:H13	1.20	1.02
1:A:428:GLN:H	4:A:604:DMS:H22	1.27	0.99
2:B:227:PHE:N	7:B:839:HOH:O	2.08	0.85
1:A:259:LYS:NZ	7:A:1234:HOH:O	2.10	0.84
2:B:84:THR:HG21	2:B:153:TRP:HE1	1.43	0.84
1:A:474:ASN:H	4:A:606:DMS:H22	1.45	0.82
1:A:281:LYS:HG2	1:A:284:ARG:HH22	1.57	0.69
2:B:30:LYS:NZ	7:B:808:HOH:O	2.27	0.68
2:B:354:TYR:HA	2:B:356:ARG:HH11	1.63	0.64
1:A:73:LYS:NZ	1:A:146:TYR:OH	2.30	0.62
2:B:26:LEU:N	4:B:503:DMS:H13	2.05	0.61
2:B:227:PHE:HD1	2:B:230:MET:HE1	1.65	0.60
1:A:428:GLN:H	4:A:604:DMS:C2	2.10	0.60
1:A:426:TRP:H	4:A:603:DMS:H22	1.66	0.60
1:A:79:GLU:OE1	7:A:1096:HOH:O	2.17	0.59
1:A:211:ARG:HG2	1:A:212:TRP:CE3	2.37	0.59
1:A:542:ILE:HA	2:B:283:LEU:HD11	1.84	0.58
1:A:543:GLY:N	2:B:283:LEU:HD11	2.18	0.58
4:B:502:DMS:H22	7:B:805:HOH:O	2.03	0.57
1:A:426:TRP:H	4:A:603:DMS:C2	2.17	0.57
1:A:181:TYR:CE2	1:A:183:TYR:HB2	2.39	0.57
2:B:210:LEU:HA	2:B:214:LEU:HD11	1.88	0.55
2:B:115:TYR:OH	2:B:182:GLN:NE2	2.40	0.55
1:A:28:GLU:HG3	1:A:135:ILE:HD12	1.89	0.54
3:A:601:T27:N3	3:A:601:T27:H15	2.23	0.54
1:A:151:GLN:H	4:A:605:DMS:C2	2.21	0.53
2:B:239:TRP:HE1	4:B:505:DMS:C2	2.21	0.53
1:A:448:ARG:HG2	4:A:606:DMS:H23	1.90	0.52
1:A:237:ASP:OD1	7:A:1112:HOH:O	2.19	0.50
1:A:542:ILE:O	1:A:545:ASN:HB3	2.11	0.50
1:A:277:ARG:HH12	1:A:358:ARG:HH12	1.59	0.50
2:B:234:LEU:HA	4:B:505:DMS:H21	1.94	0.49
2:B:235:HIS:H	4:B:505:DMS:H23	1.78	0.48
2:B:30:LYS:NZ	2:B:404:GLU:OE2	2.46	0.47
2:B:197:GLN:O	2:B:201:LYS:HG2	2.14	0.47
1:A:324:ASP:H	4:A:608:DMS:C1	2.27	0.47
1:A:151:GLN:H	4:A:605:DMS:H21	1.80	0.47
4:A:607:DMS:H23	7:A:958:HOH:O	2.14	0.47

*Continued on next page...*

*Continued from previous page...*

Atom-1	Atom-2	Interatomic distance (Å)	Clash overlap (Å)
2:B:94:ILE:O	7:B:863:HOH:O	2.21	0.47
2:B:108:VAL:HB	2:B:232:TYR:HB3	1.97	0.47
2:B:426:TRP:HZ3	4:B:507:DMS:O	1.98	0.47
2:B:281:LYS:O	2:B:284:ARG:HG3	2.14	0.47
2:B:99:GLY:HA2	2:B:102:LYS:HD2	1.98	0.46
1:A:277:ARG:HH12	1:A:358:ARG:NH1	2.14	0.46
2:B:354:TYR:HB3	2:B:356:ARG:HG2	1.98	0.46
1:A:324:ASP:H	4:A:608:DMS:H12	1.81	0.45
2:B:399:GLU:HB3	4:B:506:DMS:C1	2.46	0.45
1:A:211:ARG:HG2	1:A:212:TRP:CZ3	2.51	0.45
2:B:239:TRP:HE1	4:B:505:DMS:H22	1.80	0.45
1:A:19:PRO:HG3	1:A:80:LEU:HB2	1.98	0.45
1:A:114:ALA:HB2	1:A:214:LEU:HD13	1.98	0.44
2:B:360:ALA:HB1	2:B:367:GLN:HG3	1.99	0.44
2:B:235:HIS:H	4:B:505:DMS:C2	2.30	0.44
1:A:354:TYR:HD1	1:A:374:LYS:HD2	1.83	0.43
2:B:413:GLU:OE1	7:B:849:HOH:O	2.21	0.43
2:B:236:PRO:HA	2:B:239:TRP:CD2	2.54	0.42
1:A:363:ASN:ND2	1:A:366:LYS:HE3	2.34	0.42
2:B:281:LYS:HE2	2:B:284:ARG:HH22	1.84	0.42
1:A:354:TYR:CD1	1:A:374:LYS:HD2	2.55	0.42
1:A:366:LYS:HE2	1:A:405:TYR:OH	2.20	0.42
2:B:84:THR:OG1	2:B:154:LYS:HE2	2.20	0.41
1:A:297:GLU:O	1:A:301:LEU:HG	2.19	0.41
2:B:151:GLN:HB3	2:B:185:ASP:OD2	2.21	0.41
1:A:277:ARG:NH1	1:A:358:ARG:HH12	2.17	0.41
1:A:406:TRP:CE2	1:A:407:GLN:HG3	2.55	0.41
2:B:66:LYS:NZ	2:B:407:GLN:OE1	2.48	0.41
1:A:249:LYS:HE2	1:A:256:ASP:OD2	2.21	0.41
1:A:271:TYR:HA	1:A:272:PRO:HD3	1.98	0.40
2:B:282:LEU:HD21	2:B:296:THR:H	1.85	0.40
2:B:239:TRP:HE1	4:B:505:DMS:H23	1.86	0.40
2:B:281:LYS:HE2	2:B:284:ARG:NH2	2.36	0.40
4:B:501:DMS:H12	7:B:929:HOH:O	2.22	0.40

There are no symmetry-related clashes.

## 5.3 Torsion angles

### 5.3.1 Protein backbone

In the following table, the Percentiles column shows the percent Ramachandran outliers of the chain as a percentile score with respect to all X-ray entries followed by that with respect to entries of similar resolution.

The Analysed column shows the number of residues for which the backbone conformation was analysed, and the total number of residues.

Mol	Chain	Analysed	Favoured	Allowed	Outliers	Percentiles	
1	A	555/557 (100%)	538 (97%)	15 (3%)	2 (0%)	39	27
2	B	409/429 (95%)	397 (97%)	10 (2%)	2 (0%)	34	21
All	All	964/986 (98%)	935 (97%)	25 (3%)	4 (0%)	39	27

All (4) Ramachandran outliers are listed below:

Mol	Chain	Res	Type
1	A	66	LYS
1	A	543	GLY
2	B	213	GLY
2	B	6	GLU

### 5.3.2 Protein sidechains

In the following table, the Percentiles column shows the percent sidechain outliers of the chain as a percentile score with respect to all X-ray entries followed by that with respect to entries of similar resolution.

The Analysed column shows the number of residues for which the sidechain conformation was analysed, and the total number of residues.

Mol	Chain	Analysed	Rotameric	Outliers	Percentiles	
1	A	496/495 (100%)	490 (99%)	6 (1%)	78	75
2	B	375/390 (96%)	369 (98%)	6 (2%)	70	66
All	All	871/885 (98%)	859 (99%)	12 (1%)	74	70

All (12) residues with a non-rotameric sidechain are listed below:

Mol	Chain	Res	Type
1	A	-1	MET
1	A	185	ASP

*Continued on next page...*

*Continued from previous page...*

Mol	Chain	Res	Type
1	A	211	ARG
1	A	215	THR
1	A	218	ASP
1	A	290	THR
2	B	169	GLU
2	B	242	GLN
2	B	300	GLU
2	B	356	ARG
2	B	370	GLU
2	B	388	LYS

Some sidechains can be flipped to improve hydrogen bonding and reduce clashes. All (1) such sidechains are listed below:

Mol	Chain	Res	Type
2	B	182	GLN

### 5.3.3 RNA [i](#)

There are no RNA molecules in this entry.

## 5.4 Non-standard residues in protein, DNA, RNA chains [i](#)

There are no non-standard protein/DNA/RNA residues in this entry.

## 5.5 Carbohydrates [i](#)

There are no carbohydrates in this entry.

## 5.6 Ligand geometry [i](#)

Of 20 ligands modelled in this entry, 1 is monoatomic - leaving 19 for Mogul analysis.

In the following table, the Counts columns list the number of bonds (or angles) for which Mogul statistics could be retrieved, the number of bonds (or angles) that are observed in the model and the number of bonds (or angles) that are defined in the chemical component dictionary. The Link column lists molecule types, if any, to which the group is linked. The Z score for a bond length (or angle) is the number of standard deviations the observed value is removed from the expected value. A bond length (or angle) with  $|Z| > 2$  is considered an outlier worth inspection. RMSZ is the root-mean-square of all Z scores of the bond lengths (or angles).

Mol	Type	Chain	Res	Link	Bond lengths			Bond angles		
					Counts	RMSZ	# Z  > 2	Counts	RMSZ	# Z  > 2
3	T27	A	601	-	30,30,30	1.17	2 (6%)	37,40,40	1.94	6 (16%)
4	DMS	A	602	-	3,3,3	0.66	0	3,3,3	0.47	0
4	DMS	A	603	-	3,3,3	0.50	0	3,3,3	0.39	0
4	DMS	A	604	-	3,3,3	0.53	0	3,3,3	0.57	0
4	DMS	A	605	-	3,3,3	0.62	0	3,3,3	0.47	0
4	DMS	A	606	-	3,3,3	0.66	0	3,3,3	0.68	0
4	DMS	A	607	-	3,3,3	0.67	0	3,3,3	0.44	0
4	DMS	A	608	-	3,3,3	0.65	0	3,3,3	0.53	0
5	1FF	A	609	-	11,16,16	0.66	0	14,22,22	2.14	3 (21%)
4	DMS	B	501	-	3,3,3	0.64	0	3,3,3	0.59	0
4	DMS	B	502	-	3,3,3	0.51	0	3,3,3	0.44	0
4	DMS	B	503	-	3,3,3	0.67	0	3,3,3	0.71	0
4	DMS	B	504	-	3,3,3	0.59	0	3,3,3	0.40	0
4	DMS	B	505	-	3,3,3	0.57	0	3,3,3	0.36	0
4	DMS	B	506	-	3,3,3	0.70	0	3,3,3	1.34	1 (33%)
4	DMS	B	507	-	3,3,3	0.66	0	3,3,3	0.40	0
4	DMS	B	508	-	3,3,3	0.70	0	3,3,3	0.56	0
4	DMS	B	509	-	3,3,3	0.61	0	3,3,3	0.37	0
4	DMS	B	510	-	3,3,3	0.60	0	3,3,3	0.39	0

In the following table, the Chirals column lists the number of chiral outliers, the number of chiral centers analysed, the number of these observed in the model and the number defined in the chemical component dictionary. Similar counts are reported in the Torsion and Rings columns. '-' means no outliers of that kind were identified.

Mol	Type	Chain	Res	Link	Chirals	Torsions	Rings
3	T27	A	601	-	-	0/13/14/14	0/3/3/3
4	DMS	A	602	-	-	0/0/0/0	0/0/0/0
4	DMS	A	603	-	-	0/0/0/0	0/0/0/0
4	DMS	A	604	-	-	0/0/0/0	0/0/0/0
4	DMS	A	605	-	-	0/0/0/0	0/0/0/0
4	DMS	A	606	-	-	0/0/0/0	0/0/0/0
4	DMS	A	607	-	-	0/0/0/0	0/0/0/0
4	DMS	A	608	-	-	0/0/0/0	0/0/0/0
5	1FF	A	609	-	-	0/4/8/8	0/2/2/2
4	DMS	B	501	-	-	0/0/0/0	0/0/0/0
4	DMS	B	502	-	-	0/0/0/0	0/0/0/0
4	DMS	B	503	-	-	0/0/0/0	0/0/0/0
4	DMS	B	504	-	-	0/0/0/0	0/0/0/0
4	DMS	B	505	-	-	0/0/0/0	0/0/0/0
4	DMS	B	506	-	-	0/0/0/0	0/0/0/0
4	DMS	B	507	-	-	0/0/0/0	0/0/0/0

Continued on next page...

*Continued from previous page...*

Mol	Type	Chain	Res	Link	Chirals	Torsions	Rings
4	DMS	B	508	-	-	0/0/0/0	0/0/0/0
4	DMS	B	509	-	-	0/0/0/0	0/0/0/0
4	DMS	B	510	-	-	0/0/0/0	0/0/0/0

All (2) bond length outliers are listed below:

Mol	Chain	Res	Type	Atoms	Z	Observed(Å)	Ideal(Å)
3	A	601	T27	C11-N1	2.72	1.43	1.38
3	A	601	T27	C12-N4	4.52	1.44	1.36

All (10) bond angle outliers are listed below:

Mol	Chain	Res	Type	Atoms	Z	Observed(°)	Ideal(°)
3	A	601	T27	C10-C9-N2	-5.35	117.79	123.90
5	A	609	1FF	C2-N1-N2	-4.80	108.81	112.77
3	A	601	T27	N2-C12-N3	-3.92	122.49	126.67
3	A	601	T27	C3-C4-C5	-3.03	119.21	122.28
3	A	601	T27	C6-N1-C11	-2.58	120.91	124.57
3	A	601	T27	C10-C11-N3	-2.04	119.59	123.24
4	B	506	DMS	O-S-C1	2.04	117.84	106.64
5	A	609	1FF	C4-N1-N2	3.38	123.67	118.05
5	A	609	1FF	C3-N2-N1	4.60	109.00	104.24
3	A	601	T27	C9-N2-C12	6.71	121.32	115.49

There are no chirality outliers.

There are no torsion outliers.

There are no ring outliers.

13 monomers are involved in 24 short contacts:

Mol	Chain	Res	Type	Clashes	Symm-Clashes
3	A	601	T27	1	0
4	A	603	DMS	2	0
4	A	604	DMS	2	0
4	A	605	DMS	2	0
4	A	606	DMS	2	0
4	A	607	DMS	1	0
4	A	608	DMS	2	0
4	B	501	DMS	1	0
4	B	502	DMS	1	0
4	B	503	DMS	2	0

*Continued on next page...*



*Continued from previous page...*

Mol	Chain	Res	Type	Clashes	Symm-Clashes
4	B	505	DMS	6	0
4	B	506	DMS	1	0
4	B	507	DMS	1	0

## 5.7 Other polymers [i](#)

There are no such residues in this entry.

## 5.8 Polymer linkage issues [i](#)

There are no chain breaks in this entry.

## 6 Fit of model and data

### 6.1 Protein, DNA and RNA chains

In the following table, the column labelled ‘#RSRZ> 2’ contains the number (and percentage) of RSRZ outliers, followed by percent RSRZ outliers for the chain as percentile scores relative to all X-ray entries and entries of similar resolution. The OWAB column contains the minimum, median, 95<sup>th</sup> percentile and maximum values of the occupancy-weighted average B-factor per residue. The column labelled ‘Q< 0.9’ lists the number of (and percentage) of residues with an average occupancy less than 0.9.

Mol	Chain	Analysed	<RSRZ>	#RSRZ>2	OWAB(Å <sup>2</sup> )	Q<0.9
1	A	556/557 (99%)	0.32	43 (7%) 16 25	15, 34, 81, 115	0
2	B	412/429 (96%)	0.70	56 (13%) 4 7	17, 37, 92, 134	0
All	All	968/986 (98%)	0.48	99 (10%) 9 14	15, 35, 88, 134	0

All (99) RSRZ outliers are listed below:

Mol	Chain	Res	Type	RSRZ
2	B	90	VAL	13.5
2	B	92	LEU	13.2
2	B	214	LEU	11.2
2	B	213	GLY	10.9
2	B	93	GLY	9.5
1	A	67	ASP	9.4
2	B	357	MET	8.4
1	A	69	THR	8.3
2	B	88	TRP	8.2
1	A	286	THR	7.4
1	A	68	SER	7.2
1	A	287	LYS	7.1
1	A	222	GLN	7.0
1	A	64	LYS	6.8
1	A	219	LYS	6.7
2	B	6	GLU	6.6
2	B	7	THR	6.5
2	B	358	ARG	6.2
1	A	24	TRP	6.2
1	A	220	LYS	6.2
1	A	289	LEU	6.2
2	B	170	PRO	6.1
1	A	92	LEU	6.1
1	A	66	LYS	6.1

*Continued on next page...*

*Continued from previous page...*

Mol	Chain	Res	Type	RSRZ
2	B	69	THR	6.0
1	A	218	ASP	6.0
1	A	285	GLY	6.0
1	A	288	ALA	5.9
2	B	5	ILE	5.8
1	A	65	LYS	5.7
2	B	196	GLY	5.7
2	B	89	GLU	5.4
1	A	221	HIS	5.0
1	A	301	LEU	4.7
1	A	223	LYS	4.7
2	B	229	TRP	4.7
2	B	200	THR	4.6
1	A	284	ARG	4.5
2	B	212	TRP	4.4
1	A	115	TYR	4.3
2	B	95	PRO	4.3
1	A	71	TRP	4.2
1	A	292	VAL	4.1
1	A	51	GLY	4.1
1	A	290	THR	4.0
1	A	52	PRO	4.0
2	B	355	ALA	4.0
2	B	283	LEU	4.0
2	B	356	ARG	4.0
1	A	70	LYS	3.9
1	A	91	GLN	3.9
2	B	14	PRO	3.7
2	B	68	SER	3.7
2	B	174	GLN	3.7
1	A	552	VAL	3.6
2	B	195	ILE	3.6
2	B	284	ARG	3.6
2	B	173	LYS	3.5
2	B	240	THR	3.5
2	B	237	ASP	3.5
2	B	238	LYS	3.5
2	B	94	ILE	3.4
2	B	197	GLN	3.4
1	A	254	VAL	3.3
2	B	176	PRO	3.2
1	A	358	ARG	3.1

*Continued on next page...*

*Continued from previous page...*

Mol	Chain	Res	Type	RSRZ
2	B	166	LYS	3.1
2	B	9	PRO	3.1
1	A	217	PRO	3.1
1	A	224	GLU	3.1
1	A	546	GLU	3.1
2	B	193	LEU	3.0
2	B	210	LEU	3.0
1	A	53	GLU	3.0
2	B	104	LYS	3.0
2	B	171	PHE	2.9
2	B	15	GLY	2.9
2	B	67	ASP	2.8
2	B	91	GLN	2.8
2	B	87	PHE	2.8
2	B	361	HIS	2.7
1	A	553	SER	2.6
1	A	291	GLU	2.5
2	B	282	LEU	2.5
1	A	410	TRP	2.5
2	B	360	ALA	2.5
1	A	283	LEU	2.4
2	B	169	GLU	2.4
2	B	315	HIS	2.4
2	B	8	VAL	2.4
1	A	196	GLY	2.3
2	B	187	LEU	2.3
1	A	548	VAL	2.3
2	B	194	GLU	2.3
2	B	66	LYS	2.2
2	B	272	PRO	2.1
2	B	426	TRP	2.1
2	B	359	GLY	2.1
1	A	40	GLU	2.0

## 6.2 Non-standard residues in protein, DNA, RNA chains ⓘ

There are no non-standard protein/DNA/RNA residues in this entry.

## 6.3 Carbohydrates ⓘ

There are no carbohydrates in this entry.

## 6.4 Ligands [i](#)

In the following table, the Atoms column lists the number of modelled atoms in the group and the number defined in the chemical component dictionary. LLDF column lists the quality of electron density of the group with respect to its neighbouring residues in protein, DNA or RNA chains. The B-factors column lists the minimum, median, 95<sup>th</sup> percentile and maximum values of B factors of atoms in the group. The column labelled 'Q< 0.9' lists the number of atoms with occupancy less than 0.9.

Mol	Type	Chain	Res	Atoms	RSCC	RSR	LLDF	B-factors(Å <sup>2</sup> )	Q<0.9
4	DMS	A	605	4/4	0.86	0.28	7.02	28,65,107,108	0
4	DMS	A	603	4/4	0.87	0.21	6.30	14,39,72,74	0
4	DMS	B	510	4/4	0.82	0.27	6.02	24,54,75,78	0
4	DMS	A	607	4/4	0.88	0.20	4.83	48,69,69,86	0
4	DMS	B	503	4/4	0.79	0.18	3.92	16,21,75,78	0
4	DMS	B	509	4/4	0.84	0.19	2.90	35,79,96,97	0
5	1FF	A	609	15/15	0.94	0.12	1.26	26,28,32,33	0
4	DMS	B	504	4/4	0.93	0.41	1.07	31,103,160,161	0
4	DMS	B	507	4/4	0.96	0.17	1.06	42,55,60,93	0
4	DMS	A	604	4/4	0.98	0.09	0.22	26,28,32,39	0
4	DMS	B	505	4/4	0.93	0.14	0.19	27,66,69,72	0
3	T27	A	601	28/28	0.94	0.10	-0.18	19,24,29,31	0
4	DMS	B	508	4/4	0.94	0.12	-0.33	30,47,48,56	0
4	DMS	B	502	4/4	0.98	0.08	-0.55	22,26,36,44	0
4	DMS	B	501	4/4	0.98	0.08	-1.17	37,40,41,52	0
4	DMS	A	608	4/4	0.95	0.09	-	41,61,68,68	0
4	DMS	A	602	4/4	0.94	0.09	-	49,55,57,67	0
6	MG	A	610	1/1	0.86	0.14	-	43,43,43,43	0
4	DMS	B	506	4/4	0.99	0.11	-	25,30,36,139	0
4	DMS	A	606	4/4	0.92	0.13	-	51,55,55,64	0

## 6.5 Other polymers [i](#)

There are no such residues in this entry.