



# Full wwPDB X-ray Structure Validation Report ⓘ

Feb 1, 2016 – 05:26 PM GMT

PDB ID : 4IDK  
Title : HIV-1 reverse transcriptase with bound fragment at the 428 site  
Authors : Bauman, J.D.; Patel, D.; Arnold, E.  
Deposited on : 2012-12-12  
Resolution : 2.10 Å(reported)

This is a Full wwPDB X-ray Structure Validation Report for a publicly released PDB entry.  
We welcome your comments at [validation@mail.wwpdb.org](mailto:validation@mail.wwpdb.org)  
A user guide is available at  
<http://wwpdb.org/validation/2016/XrayValidationReportHelp>  
with specific help available everywhere you see the ⓘ symbol.

---

The following versions of software and data (see [references ⓘ](#)) were used in the production of this report:

MolProbity : 4.02b-467  
Mogul : 1.7 (RC4), CSD as536be (2015)  
Xtriage (Phenix) : 1.9-1692  
EDS : rb-20026688  
Percentile statistics : 20151230.v01 (using entries in the PDB archive December 30th 2015)  
Refmac : 5.8.0135  
CCP4 : 6.5.0  
Ideal geometry (proteins) : Engh & Huber (2001)  
Ideal geometry (DNA, RNA) : Parkinson et al. (1996)  
Validation Pipeline (wwPDB-VP) : trunk26865

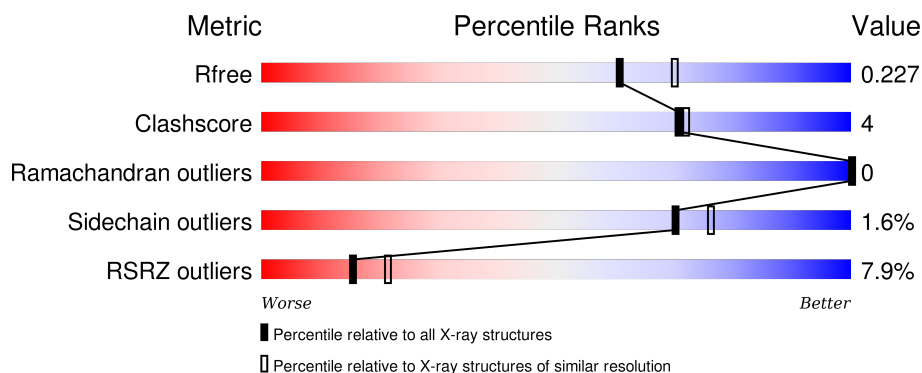
# 1 Overall quality at a glance

The following experimental techniques were used to determine the structure:

## *X-RAY DIFFRACTION*

The reported resolution of this entry is 2.10 Å.

Percentile scores (ranging between 0-100) for global validation metrics of the entry are shown in the following graphic. The table shows the number of entries on which the scores are based.



Metric	Whole archive (#Entries)	Similar resolution (#Entries, resolution range(Å))
$R_{free}$	91344	3939 (2.10-2.10)
Clashscore	102246	4460 (2.10-2.10)
Ramachandran outliers	100387	4413 (2.10-2.10)
Sidechain outliers	100360	4414 (2.10-2.10)
RSRZ outliers	91569	3948 (2.10-2.10)

The table below summarises the geometric issues observed across the polymeric chains and their fit to the electron density. The red, orange, yellow and green segments on the lower bar indicate the fraction of residues that contain outliers for  $\geq 3$ , 2, 1 and 0 types of geometric quality criteria. A grey segment represents the fraction of residues that are not modelled. The numeric value for each fraction is indicated below the corresponding segment, with a dot representing fractions  $\leq 5\%$ . The upper red bar (where present) indicates the fraction of residues that have poor fit to the electron density. The numeric value is given above the bar.

Mol	Chain	Length	Quality of chain
1	A	557	<div> <div>6%</div> <div>90%</div> <div>10%</div> </div>
2	B	429	<div> <div>9%</div> <div>85%</div> <div>10%</div> <div>• •</div> </div>

The following table lists non-polymeric compounds, carbohydrate monomers and non-standard residues in protein, DNA, RNA chains that are outliers for geometric or electron-density-fit criteria:

Mol	Type	Chain	Res	Chirality	Geometry	Clashes	Electron density
4	1FE	A	602	-	-	-	X
6	DMS	A	604	-	-	-	X
6	DMS	A	605	-	-	-	X
6	DMS	A	606	-	-	X	-
6	DMS	B	507	-	-	-	X

## 2 Entry composition

There are 7 unique types of molecules in this entry. The entry contains 8702 atoms, of which 0 are hydrogens and 0 are deuteriums.

In the tables below, the ZeroOcc column contains the number of atoms modelled with zero occupancy, the AltConf column contains the number of residues with at least one atom in alternate conformation and the Trace column contains the number of residues modelled with at most 2 atoms.

- Molecule 1 is a protein called Reverse transcriptase/ribonuclease H.

Mol	Chain	Residues	Atoms					ZeroOcc	AltConf	Trace
1	A	556	Total	C	N	O	S	0	1	0
			4525	2928	752	837	8			

There are 5 discrepancies between the modelled and reference sequences:

Chain	Residue	Modelled	Actual	Comment	Reference
A	-1	MET	-	EXPRESSION TAG	UNP P03366
A	0	VAL	-	EXPRESSION TAG	UNP P03366
A	172	ALA	LYS	ENGINEERED MUTATION	UNP P03366
A	173	ALA	LYS	ENGINEERED MUTATION	UNP P03366
A	280	SER	CYS	ENGINEERED MUTATION	UNP P03366

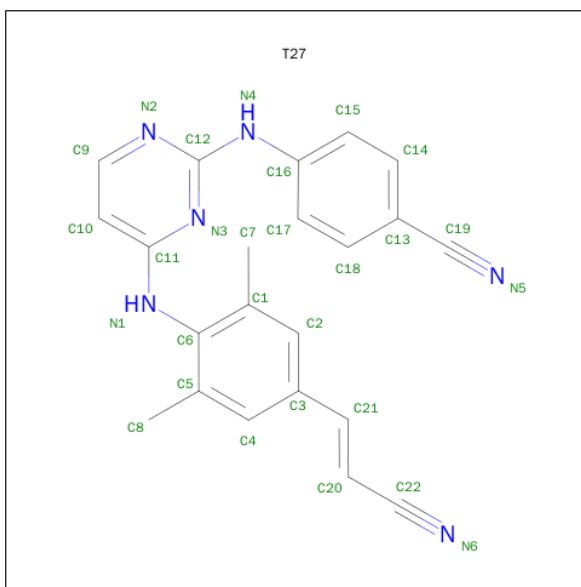
- Molecule 2 is a protein called p51 RT.

Mol	Chain	Residues	Atoms					ZeroOcc	AltConf	Trace
2	B	412	Total	C	N	O	S	0	1	0
			3419	2228	565	619	7			

There are 2 discrepancies between the modelled and reference sequences:

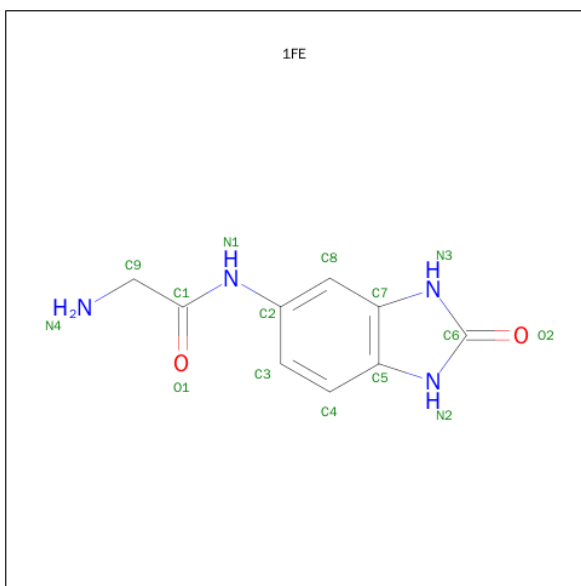
Chain	Residue	Modelled	Actual	Comment	Reference
B	0	GLY	-	EXPRESSION TAG	UNP P03366
B	280	SER	CYS	ENGINEERED MUTATION	UNP P03366

- Molecule 3 is 4-{4-({4-[(E)-2-CYANOETHENYL]-2,6-DIMETHYLPHENYL}AMINO)PYRIMIDIN-2-YL}AMINO}BENZONITRILE (three-letter code: T27) (formula: C<sub>22</sub>H<sub>18</sub>N<sub>6</sub>).



Mol	Chain	Residues	Atoms			ZeroOcc	AltConf
3	A	1	Total	C	N	0	0
			28	22	6		

- Molecule 4 is N-(2-OXO-2,3-DIHYDRO-1H-BENZIMIDAZOL-5-YL)GLYCINAMIDE (three-letter code: 1FE) (formula:  $C_9H_{10}N_4O_2$ ).

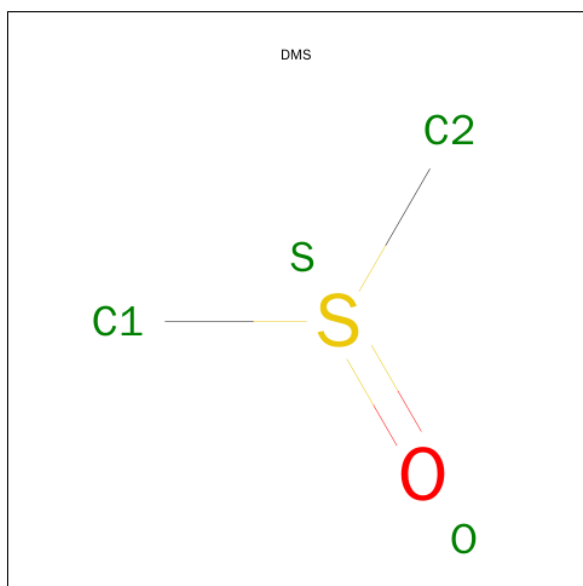


Mol	Chain	Residues	Atoms				ZeroOcc	AltConf
4	A	1	Total	C	N	O	0	0
			15	9	4	2		

- Molecule 5 is MAGNESIUM ION (three-letter code: MG) (formula: Mg).

Mol	Chain	Residues	Atoms		ZeroOcc	AltConf
5	A	1	Total	Mg	0	0
			1	1		

- Molecule 6 is DIMETHYL SULFOXIDE (three-letter code: DMS) (formula:  $C_2H_6OS$ ).



Mol	Chain	Residues	Atoms				ZeroOcc	AltConf
6	A	1	Total	C	O	S	0	0
			4	2	1	1		
6	A	1	Total	C	O	S	0	0
			4	2	1	1		
6	A	1	Total	C	O	S	0	0
			4	2	1	1		
6	A	1	Total	C	O	S	0	0
			4	2	1	1		
6	A	1	Total	C	O	S	0	0
			4	2	1	1		
6	A	1	Total	C	O	S	0	0
			4	2	1	1		
6	A	1	Total	C	O	S	0	0
			4	2	1	1		
6	B	1	Total	C	O	S	0	0
			4	2	1	1		
6	B	1	Total	C	O	S	0	0
			4	2	1	1		

*Continued on next page...*

*Continued from previous page...*

Mol	Chain	Residues	Atoms				ZeroOcc	AltConf
6	B	1	Total 4	C 2	O 1	S 1	0	0
6	B	1	Total 4	C 2	O 1	S 1	0	0
6	B	1	Total 4	C 2	O 1	S 1	0	0
6	B	1	Total 4	C 2	O 1	S 1	0	0
6	B	1	Total 4	C 2	O 1	S 1	0	0

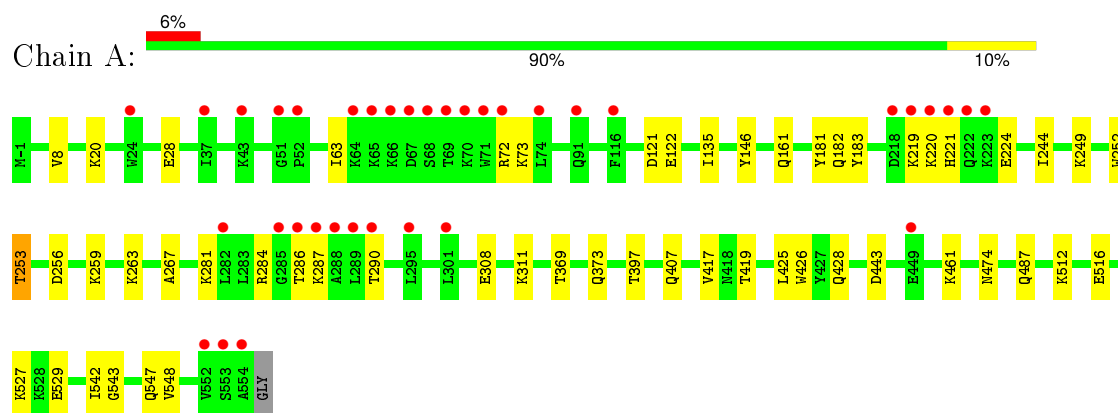
- Molecule 7 is water.

Mol	Chain	Residues	Atoms		ZeroOcc	AltConf
7	A	397	Total 397	O 397	0	0
7	B	253	Total 253	O 253	0	0

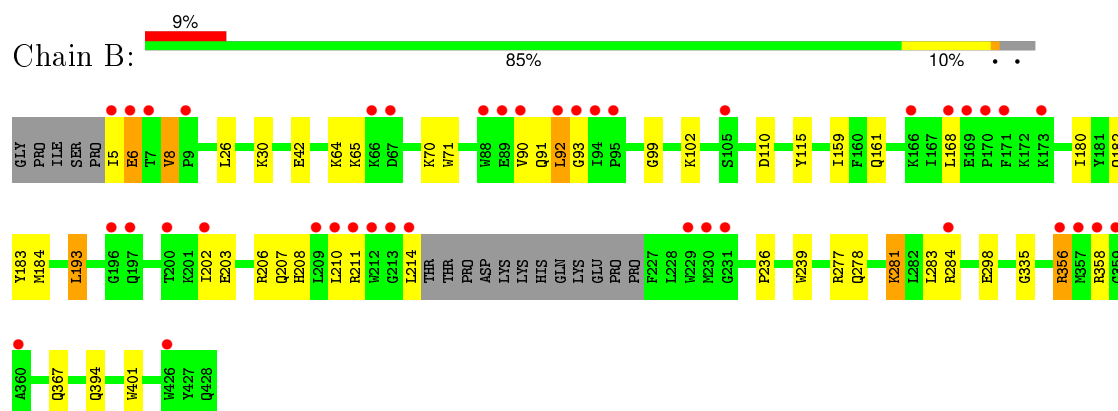
### 3 Residue-property plots [i](#)

These plots are drawn for all protein, RNA and DNA chains in the entry. The first graphic for a chain summarises the proportions of errors displayed in the second graphic. The second graphic shows the sequence view annotated by issues in geometry and electron density. Residues are color-coded according to the number of geometric quality criteria for which they contain at least one outlier: green = 0, yellow = 1, orange = 2 and red = 3 or more. A red dot above a residue indicates a poor fit to the electron density ( $RSRZ > 2$ ). Stretches of 2 or more consecutive residues without any outlier are shown as a green connector. Residues present in the sample, but not in the model, are shown in grey.

- Molecule 1: Reverse transcriptase/ribonuclease H



- Molecule 2: p51 RT





## 4 Data and refinement statistics

Property	Value	Source
Space group	C 1 2 1	Depositor
Cell constants a, b, c, $\alpha$ , $\beta$ , $\gamma$	161.88 Å   73.07 Å   108.97 Å 90.00°   100.48°   90.00°	Depositor
Resolution (Å)	42.93 – 2.10 42.93 – 2.10	Depositor EDS
% Data completeness (in resolution range)	99.6 (42.93-2.10) 93.2 (42.93-2.10)	Depositor EDS
$R_{merge}$	0.07	Depositor
$R_{sym}$	(Not available)	Depositor
$\langle I/\sigma(I) \rangle$ <sup>1</sup>	2.39 (at 2.10 Å)	Xtriage
Refinement program	PHENIX (phenix.refine: 1.8.1_1168)	Depositor
R, $R_{free}$	0.182 , 0.225 0.188 , 0.227	Depositor DCC
$R_{free}$ test set	3688 reflections (5.68%)	DCC
Wilson B-factor (Å <sup>2</sup> )	32.9	Xtriage
Anisotropy	0.178	Xtriage
Bulk solvent $k_{sol}$ (e/Å <sup>3</sup> ), $B_{sol}$ (Å <sup>2</sup> )	0.34 , 54.1	EDS
Estimated twinning fraction	No twinning to report.	Xtriage
L-test for twinning <sup>2</sup>	$\langle  L  \rangle = 0.50$ , $\langle L^2 \rangle = 0.33$	Xtriage
Outliers	0 of 73115 reflections	Xtriage
$F_o, F_c$ correlation	0.95	EDS
Total number of atoms	8702	wwPDB-VP
Average B, all atoms (Å <sup>2</sup> )	41.0	wwPDB-VP

Xtriage's analysis on translational NCS is as follows: *The largest off-origin peak in the Patterson function is 5.23% of the height of the origin peak. No significant pseudotranslation is detected.*

<sup>1</sup>Intensities estimated from amplitudes.

<sup>2</sup>Theoretical values of  $\langle |L| \rangle$ ,  $\langle L^2 \rangle$  for acentric reflections are 0.5, 0.375 respectively for untwinned datasets, and 0.333, 0.2 for perfectly twinned datasets.

## 5 Model quality [i](#)

### 5.1 Standard geometry [i](#)

Bond lengths and bond angles in the following residue types are not validated in this section: 1FE, MG, DMS, T27

The Z score for a bond length (or angle) is the number of standard deviations the observed value is removed from the expected value. A bond length (or angle) with  $|Z| > 5$  is considered an outlier worth inspection. RMSZ is the root-mean-square of all Z scores of the bond lengths (or angles).

Mol	Chain	Bond lengths		Bond angles	
		RMSZ	# $ Z  > 5$	RMSZ	# $ Z  > 5$
1	A	0.35	0/4643	0.53	0/6311
2	B	0.35	0/3517	0.56	1/4776 (0.0%)
All	All	0.35	0/8160	0.54	1/11087 (0.0%)

There are no bond length outliers.

All (1) bond angle outliers are listed below:

Mol	Chain	Res	Type	Atoms	Z	Observed(°)	Ideal(°)
2	B	401	TRP	N-CA-C	5.48	125.79	111.00

There are no chirality outliers.

There are no planarity outliers.

### 5.2 Too-close contacts [i](#)

In the following table, the Non-H and H(model) columns list the number of non-hydrogen atoms and hydrogen atoms in the chain respectively. The H(added) column lists the number of hydrogen atoms added and optimized by MolProbity. The Clashes column lists the number of clashes within the asymmetric unit, whereas Symm-Clashes lists symmetry related clashes.

Mol	Chain	Non-H	H(model)	H(added)	Clashes	Symm-Clashes
1	A	4525	0	4579	39	0
2	B	3419	0	3447	31	0
3	A	28	0	18	1	0
4	A	15	0	10	3	0
5	A	1	0	0	0	0
6	A	36	0	54	11	0
6	B	28	0	42	0	0
7	A	397	0	0	8	0

*Continued on next page...*

*Continued from previous page...*

Mol	Chain	Non-H	H(model)	H(added)	Clashes	Symm-Clashes
7	B	253	0	0	3	0
All	All	8702	0	8150	71	0

The all-atom clashscore is defined as the number of clashes found per 1000 atoms (including hydrogen atoms). The all-atom clashscore for this structure is 4.

All (71) close contacts within the same asymmetric unit are listed below, sorted by their clash magnitude.

Atom-1	Atom-2	Interatomic distance (Å)	Clash overlap (Å)
6:A:605:DMS:H13	2:B:26:LEU:H	1.26	0.97
1:A:428:GLN:H	6:A:606:DMS:H22	1.43	0.83
1:A:512:LYS:NZ	6:A:607:DMS:O	2.12	0.81
1:A:487:GLN:NE2	7:A:889:HOH:O	1.95	0.79
2:B:278:GLN:OE1	2:B:281:LYS:NZ	2.17	0.77
1:A:63:ILE:HD11	1:A:72:ARG:HE	1.51	0.76
4:A:602:1FE:H6	6:A:606:DMS:C2	2.00	0.75
2:B:91:GLN:NE2	2:B:161:GLN:OE1	2.21	0.74
1:A:428:GLN:H	6:A:606:DMS:C2	2.01	0.72
1:A:20:LYS:NZ	7:A:768:HOH:O	2.23	0.72
1:A:426:TRP:H	6:A:604:DMS:H23	1.59	0.67
1:A:527:LYS:NZ	7:A:1018:HOH:O	2.28	0.67
1:A:253:THR:HG22	1:A:256:ASP:H	1.60	0.67
1:A:73:LYS:NZ	1:A:146:TYR:OH	2.28	0.66
2:B:42:GLU:OE1	7:B:813:HOH:O	2.13	0.65
4:A:602:1FE:H6	6:A:606:DMS:H23	1.62	0.64
2:B:281:LYS:O	2:B:284:ARG:HG2	1.98	0.63
1:A:28:GLU:HG3	1:A:135:ILE:HD12	1.80	0.63
1:A:161:GLN:HG2	1:A:182:GLN:HE22	1.62	0.63
1:A:426:TRP:H	6:A:604:DMS:C2	2.11	0.63
1:A:542:ILE:HG23	2:B:283:LEU:HD13	1.81	0.63
1:A:281:LYS:HE2	1:A:284:ARG:HH22	1.65	0.61
2:B:30:LYS:NZ	7:B:805:HOH:O	2.33	0.61
1:A:474:ASN:H	6:A:608:DMS:H22	1.65	0.61
2:B:281:LYS:NZ	2:B:298:GLU:HG3	2.15	0.61
4:A:602:1FE:H6	6:A:606:DMS:H21	1.66	0.60
1:A:417:VAL:HG22	1:A:419:THR:HG23	1.84	0.60
1:A:543:GLY:HA3	2:B:283:LEU:O	2.02	0.60
1:A:529:GLU:OE1	7:A:975:HOH:O	2.16	0.59
2:B:281:LYS:HZ2	2:B:298:GLU:HG3	1.72	0.55
1:A:224:GLU:OE1	1:A:224:GLU:N	2.41	0.54
2:B:203:GLU:OE2	2:B:207:GLN:NE2	2.40	0.54

*Continued on next page...*

*Continued from previous page...*

Atom-1	Atom-2	Interatomic distance (Å)	Clash overlap (Å)
1:A:547:GLN:NE2	7:A:1074:HOH:O	2.42	0.53
3:A:601:T27:N3	3:A:601:T27:H15	2.26	0.51
1:A:425:LEU:HA	6:A:604:DMS:H22	1.92	0.51
1:A:407:GLN:HE22	2:B:394:GLN:HE21	1.58	0.50
1:A:259:LYS:HE3	1:A:263:LYS:HE3	1.92	0.50
2:B:168:LEU:HD23	2:B:180:ILE:HD13	1.93	0.50
1:A:308:GLU:OE1	1:A:311:LYS:NZ	2.44	0.50
2:B:92:LEU:H	2:B:92:LEU:HD23	1.76	0.50
1:A:181:TYR:CE2	1:A:183:TYR:HB2	2.47	0.50
1:A:244:ILE:HD13	1:A:267:ALA:HB2	1.94	0.49
1:A:122:GLU:OE2	7:A:982:HOH:O	2.20	0.49
2:B:210:LEU:HD12	2:B:214:LEU:HD11	1.94	0.48
2:B:210:LEU:HA	2:B:214:LEU:HD11	1.95	0.48
2:B:277:ARG:NH2	7:B:786:HOH:O	2.46	0.47
1:A:286:THR:HB	7:A:1072:HOH:O	2.14	0.47
1:A:249:LYS:HB2	1:A:252:TRP:CE2	2.50	0.47
2:B:5:ILE:HG23	2:B:6:GLU:OE2	2.15	0.47
1:A:397:THR:HG23	1:A:425:LEU:HG	1.98	0.46
2:B:8:VAL:HG11	2:B:159:ILE:HG12	1.96	0.46
1:A:461:LYS:NZ	7:A:950:HOH:O	2.39	0.46
1:A:443:ASP:HB2	1:A:548:VAL:HG13	1.98	0.45
2:B:115:TYR:OH	2:B:182:GLN:NE2	2.49	0.45
2:B:99:GLY:HA2	2:B:102:LYS:HD2	1.99	0.45
1:A:308:GLU:HA	1:A:311:LYS:HG3	1.98	0.45
2:B:356:ARG:NH2	2:B:358:ARG:HB2	2.32	0.44
2:B:183:TYR:CE2	2:B:184:MET:HG2	2.53	0.44
1:A:8:VAL:O	1:A:121:ASP:HB2	2.18	0.44
2:B:70:LYS:HA	2:B:70:LYS:HD2	1.90	0.43
2:B:236:PRO:HA	2:B:239:TRP:CD2	2.54	0.43
2:B:335:GLY:HA2	2:B:367:GLN:OE1	2.18	0.43
2:B:193:LEU:H	2:B:193:LEU:HG	1.61	0.42
1:A:516:GLU:H	1:A:516:GLU:CD	2.24	0.41
1:A:219:LYS:HA	1:A:219:LYS:HD2	1.90	0.41
2:B:65:LYS:NZ	2:B:110:ASP:OD1	2.54	0.41
2:B:64:LYS:HE2	2:B:71:TRP:CE2	2.56	0.41
2:B:202:ILE:HG22	2:B:206:ARG:NH1	2.36	0.41
1:A:63:ILE:HD11	1:A:72:ARG:NE	2.28	0.40
1:A:369:THR:O	1:A:373[B]:GLN:HG2	2.20	0.40
2:B:91:GLN:HG2	2:B:93:GLY:H	1.86	0.40

There are no symmetry-related clashes.

## 5.3 Torsion angles

### 5.3.1 Protein backbone

In the following table, the Percentiles column shows the percent Ramachandran outliers of the chain as a percentile score with respect to all X-ray entries followed by that with respect to entries of similar resolution.

The Analysed column shows the number of residues for which the backbone conformation was analysed, and the total number of residues.

Mol	Chain	Analysed	Favoured	Allowed	Outliers	Percentiles	
1	A	555/557 (100%)	544 (98%)	11 (2%)	0	100	100
2	B	409/429 (95%)	399 (98%)	10 (2%)	0	100	100
All	All	964/986 (98%)	943 (98%)	21 (2%)	0	100	100

There are no Ramachandran outliers to report.

### 5.3.2 Protein sidechains

In the following table, the Percentiles column shows the percent sidechain outliers of the chain as a percentile score with respect to all X-ray entries followed by that with respect to entries of similar resolution.

The Analysed column shows the number of residues for which the sidechain conformation was analysed, and the total number of residues.

Mol	Chain	Analysed	Rotameric	Outliers	Percentiles	
1	A	496/495 (100%)	491 (99%)	5 (1%)	82	87
2	B	375/390 (96%)	366 (98%)	9 (2%)	57	61
All	All	871/885 (98%)	857 (98%)	14 (2%)	70	76

All (14) residues with a non-rotameric sidechain are listed below:

Mol	Chain	Res	Type
1	A	220	LYS
1	A	221	HIS
1	A	253	THR
1	A	287	LYS
1	A	290	THR
2	B	6	GLU
2	B	8	VAL
2	B	90	VAL

*Continued on next page...*

*Continued from previous page...*

Mol	Chain	Res	Type
2	B	92	LEU
2	B	193	LEU
2	B	208	HIS
2	B	211	ARG
2	B	281	LYS
2	B	356	ARG

Some sidechains can be flipped to improve hydrogen bonding and reduce clashes. All (3) such sidechains are listed below:

Mol	Chain	Res	Type
1	A	182	GLN
2	B	91	GLN
2	B	394	GLN

### 5.3.3 RNA [i](#)

There are no RNA molecules in this entry.

## 5.4 Non-standard residues in protein, DNA, RNA chains [i](#)

There are no non-standard protein/DNA/RNA residues in this entry.

## 5.5 Carbohydrates [i](#)

There are no carbohydrates in this entry.

## 5.6 Ligand geometry [i](#)

Of 19 ligands modelled in this entry, 1 is monoatomic - leaving 18 for Mogul analysis.

In the following table, the Counts columns list the number of bonds (or angles) for which Mogul statistics could be retrieved, the number of bonds (or angles) that are observed in the model and the number of bonds (or angles) that are defined in the chemical component dictionary. The Link column lists molecule types, if any, to which the group is linked. The Z score for a bond length (or angle) is the number of standard deviations the observed value is removed from the expected value. A bond length (or angle) with  $|Z| > 2$  is considered an outlier worth inspection. RMSZ is the root-mean-square of all Z scores of the bond lengths (or angles).

Mol	Type	Chain	Res	Link	Bond lengths			Bond angles		
					Counts	RMSZ	# Z  > 2	Counts	RMSZ	# Z  > 2
3	T27	A	601	-	30,30,30	1.18	3 (10%)	37,40,40	1.94	6 (16%)
4	1FE	A	602	-	12,16,16	3.17	5 (41%)	14,22,22	2.12	3 (21%)
6	DMS	A	604	-	3,3,3	0.46	0	3,3,3	0.49	0
6	DMS	A	605	-	3,3,3	0.63	0	3,3,3	0.62	0
6	DMS	A	606	-	3,3,3	0.46	0	3,3,3	0.28	0
6	DMS	A	607	-	3,3,3	0.65	0	3,3,3	0.43	0
6	DMS	A	608	-	3,3,3	0.66	0	3,3,3	0.66	0
6	DMS	A	609	-	3,3,3	0.64	0	3,3,3	0.59	0
6	DMS	A	610	-	3,3,3	0.64	0	3,3,3	0.58	0
6	DMS	A	611	-	3,3,3	0.63	0	3,3,3	0.49	0
6	DMS	A	612	-	3,3,3	0.67	0	3,3,3	0.47	0
6	DMS	B	501	-	3,3,3	0.67	0	3,3,3	0.41	0
6	DMS	B	502	-	3,3,3	0.57	0	3,3,3	0.26	0
6	DMS	B	503	-	3,3,3	0.61	0	3,3,3	0.43	0
6	DMS	B	504	-	3,3,3	0.68	0	3,3,3	0.97	0
6	DMS	B	505	-	3,3,3	0.67	0	3,3,3	0.53	0
6	DMS	B	506	-	3,3,3	0.68	0	3,3,3	0.86	0
6	DMS	B	507	-	3,3,3	0.59	0	3,3,3	0.44	0

In the following table, the Chirals column lists the number of chiral outliers, the number of chiral centers analysed, the number of these observed in the model and the number defined in the chemical component dictionary. Similar counts are reported in the Torsion and Rings columns. '-' means no outliers of that kind were identified.

Mol	Type	Chain	Res	Link	Chirals	Torsions	Rings
3	T27	A	601	-	-	0/13/14/14	0/3/3/3
4	1FE	A	602	-	-	0/6/6/6	0/2/2/2
6	DMS	A	604	-	-	0/0/0/0	0/0/0/0
6	DMS	A	605	-	-	0/0/0/0	0/0/0/0
6	DMS	A	606	-	-	0/0/0/0	0/0/0/0
6	DMS	A	607	-	-	0/0/0/0	0/0/0/0
6	DMS	A	608	-	-	0/0/0/0	0/0/0/0
6	DMS	A	609	-	-	0/0/0/0	0/0/0/0
6	DMS	A	610	-	-	0/0/0/0	0/0/0/0
6	DMS	A	611	-	-	0/0/0/0	0/0/0/0
6	DMS	A	612	-	-	0/0/0/0	0/0/0/0
6	DMS	B	501	-	-	0/0/0/0	0/0/0/0
6	DMS	B	502	-	-	0/0/0/0	0/0/0/0
6	DMS	B	503	-	-	0/0/0/0	0/0/0/0
6	DMS	B	504	-	-	0/0/0/0	0/0/0/0
6	DMS	B	505	-	-	0/0/0/0	0/0/0/0
6	DMS	B	506	-	-	0/0/0/0	0/0/0/0

*Continued on next page...*

*Continued from previous page...*

Mol	Type	Chain	Res	Link	Chirals	Torsions	Rings
6	DMS	B	507	-	-	0/0/0/0	0/0/0/0

All (8) bond length outliers are listed below:

Mol	Chain	Res	Type	Atoms	Z	Observed(Å)	Ideal(Å)
3	A	601	T27	C13-C19	2.07	1.49	1.44
4	A	602	1FE	C5-N2	2.13	1.46	1.39
3	A	601	T27	C11-N1	2.69	1.43	1.38
4	A	602	1FE	C4-C5	3.23	1.47	1.41
4	A	602	1FE	C1-N1	3.38	1.43	1.35
4	A	602	1FE	C8-C7	3.87	1.47	1.41
3	A	601	T27	C12-N4	4.38	1.43	1.36
4	A	602	1FE	C3-C2	8.52	1.53	1.39

All (9) bond angle outliers are listed below:

Mol	Chain	Res	Type	Atoms	Z	Observed(°)	Ideal(°)
3	A	601	T27	C10-C9-N2	-5.39	117.74	123.90
3	A	601	T27	N2-C12-N3	-4.04	122.36	126.67
3	A	601	T27	C3-C4-C5	-3.12	119.11	122.28
3	A	601	T27	C6-N1-C11	-2.24	121.39	124.57
3	A	601	T27	C10-C11-N3	-2.12	119.46	123.24
4	A	602	1FE	C9-C1-N1	3.02	118.59	114.16
4	A	602	1FE	C6-N2-C5	4.58	112.86	103.78
4	A	602	1FE	C6-N3-C7	4.88	113.46	103.78
3	A	601	T27	C9-N2-C12	6.78	121.38	115.49

There are no chirality outliers.

There are no torsion outliers.

There are no ring outliers.

7 monomers are involved in 12 short contacts:

Mol	Chain	Res	Type	Clashes	Symm-Clashes
3	A	601	T27	1	0
4	A	602	1FE	3	0
6	A	604	DMS	3	0
6	A	605	DMS	1	0
6	A	606	DMS	5	0
6	A	607	DMS	1	0
6	A	608	DMS	1	0



## 5.7 Other polymers

There are no such residues in this entry.

## 5.8 Polymer linkage issues

There are no chain breaks in this entry.

## 6 Fit of model and data

### 6.1 Protein, DNA and RNA chains

In the following table, the column labelled ‘#RSRZ> 2’ contains the number (and percentage) of RSRZ outliers, followed by percent RSRZ outliers for the chain as percentile scores relative to all X-ray entries and entries of similar resolution. The OWAB column contains the minimum, median, 95<sup>th</sup> percentile and maximum values of the occupancy-weighted average B-factor per residue. The column labelled ‘Q< 0.9’ lists the number of (and percentage) of residues with an average occupancy less than 0.9.

Mol	Chain	Analysed	<RSRZ>	#RSRZ>2	OWAB(Å <sup>2</sup> )	Q<0.9
1	A	556/557 (99%)	0.16	36 (6%) 22 29	15, 33, 77, 131	0
2	B	412/429 (96%)	0.53	40 (9%) 10 14	16, 37, 95, 137	0
All	All	968/986 (98%)	0.32	76 (7%) 15 21	15, 35, 90, 137	0

All (76) RSRZ outliers are listed below:

Mol	Chain	Res	Type	RSRZ
2	B	92	LEU	11.8
2	B	214	LEU	10.1
1	A	67	ASP	8.8
2	B	90	VAL	8.4
2	B	93	GLY	8.3
2	B	213	GLY	7.2
1	A	222	GLN	6.4
2	B	89	GLU	6.4
1	A	69	THR	6.3
1	A	221	HIS	6.3
1	A	68	SER	6.0
1	A	286	THR	5.7
1	A	287	LYS	5.5
1	A	218	ASP	5.0
1	A	66	LYS	4.7
1	A	289	LEU	4.7
2	B	67	ASP	4.7
2	B	357	MET	4.7
2	B	211	ARG	4.6
1	A	285	GLY	4.5
1	A	288	ALA	4.4
2	B	94	ILE	4.4
2	B	170	PRO	4.4
2	B	88	TRP	4.3

*Continued on next page...*

*Continued from previous page...*

Mol	Chain	Res	Type	RSRZ
1	A	219	LYS	4.3
2	B	284	ARG	4.0
2	B	209	LEU	4.0
1	A	220	LYS	4.0
1	A	37	ILE	4.0
1	A	24	TRP	3.8
1	A	290	THR	3.8
2	B	5	ILE	3.7
2	B	359	GLY	3.7
1	A	91	GLN	3.3
2	B	7	THR	3.3
2	B	231	GLY	3.2
2	B	95	PRO	3.2
1	A	71	TRP	3.2
1	A	70	LYS	3.1
2	B	358	ARG	3.1
1	A	64	LYS	3.1
2	B	230	MET	3.0
1	A	65	LYS	3.0
2	B	166	LYS	3.0
2	B	197	GLN	3.0
2	B	6	GLU	3.0
1	A	552	VAL	2.8
1	A	72	ARG	2.8
2	B	229	TRP	2.8
1	A	553	SER	2.8
1	A	554	ALA	2.8
1	A	116	PHE	2.7
2	B	200	THR	2.7
2	B	210	LEU	2.7
2	B	168	LEU	2.6
2	B	173	LYS	2.6
1	A	295	LEU	2.6
2	B	356	ARG	2.6
1	A	52	PRO	2.6
1	A	282	LEU	2.6
1	A	223	LYS	2.6
2	B	426	TRP	2.5
1	A	74	LEU	2.5
2	B	360	ALA	2.5
2	B	105	SER	2.5
1	A	449	GLU	2.4

*Continued on next page...*

*Continued from previous page...*

Mol	Chain	Res	Type	RSRZ
1	A	301	LEU	2.4
1	A	43	LYS	2.4
2	B	202	ILE	2.4
1	A	51	GLY	2.4
2	B	212	TRP	2.3
2	B	66	LYS	2.3
2	B	196	GLY	2.2
2	B	171	PHE	2.2
2	B	9	PRO	2.1
2	B	169	GLU	2.0

## 6.2 Non-standard residues in protein, DNA, RNA chains [i](#)

There are no non-standard protein/DNA/RNA residues in this entry.

## 6.3 Carbohydrates [i](#)

There are no carbohydrates in this entry.

## 6.4 Ligands [i](#)

In the following table, the Atoms column lists the number of modelled atoms in the group and the number defined in the chemical component dictionary. LLDF column lists the quality of electron density of the group with respect to its neighbouring residues in protein, DNA or RNA chains. The B-factors column lists the minimum, median, 95<sup>th</sup> percentile and maximum values of B factors of atoms in the group. The column labelled 'Q< 0.9' lists the number of atoms with occupancy less than 0.9.

Mol	Type	Chain	Res	Atoms	RSCC	RSR	LLDF	B-factors(Å <sup>2</sup> )	Q<0.9
6	DMS	B	507	4/4	0.83	0.38	10.99	30,57,106,108	0
4	1FE	A	602	15/15	0.88	0.16	5.14	34,41,54,55	0
6	DMS	A	604	4/4	0.90	0.20	4.12	13,33,49,55	0
6	DMS	A	605	4/4	0.89	0.16	2.72	14,14,66,71	0
6	DMS	A	610	4/4	0.95	0.14	1.84	62,68,76,80	0
6	DMS	B	505	4/4	0.94	0.24	1.64	64,66,66,114	0
5	MG	A	603	1/1	0.89	0.15	0.96	42,42,42,42	0
6	DMS	B	502	4/4	0.98	0.14	0.82	27,33,39,46	0
6	DMS	A	606	4/4	0.98	0.12	0.73	11,24,26,36	0
6	DMS	B	506	4/4	0.94	0.16	0.06	28,42,55,101	0
6	DMS	A	609	4/4	0.95	0.14	0.00	52,66,73,76	0

*Continued on next page...*

*Continued from previous page...*

Mol	Type	Chain	Res	Atoms	RSCC	RSR	LLDF	B-factors( $\text{\AA}^2$ )	Q<0.9
3	T27	A	601	28/28	0.96	0.11	-0.19	16,22,25,27	0
6	DMS	B	501	4/4	0.97	0.11	-1.07	35,44,45,46	0
6	DMS	A	611	4/4	0.97	0.19	-	30,74,74,75	0
6	DMS	A	607	4/4	0.95	0.09	-	40,56,58,60	0
6	DMS	B	503	4/4	0.90	0.30	-	26,87,108,110	0
6	DMS	A	608	4/4	0.83	0.21	-	64,65,77,82	0
6	DMS	A	612	4/4	0.92	0.15	-	53,74,79,83	0
6	DMS	B	504	4/4	0.98	0.16	-	30,31,36,74	0

## 6.5 Other polymers [i](#)

There are no such residues in this entry.