



wwPDB X-ray Structure Validation Summary Report ⓘ

Feb 1, 2016 – 05:27 PM GMT

PDB ID : 4IE1
Title : Crystal structure of human Arginase-1 complexed with inhibitor 1h
Authors : Cousido-Siah, A.; Mitschler, A.; Ruiz, F.X.; Beckett, P.; Van Zandt, M.C.; Ji, M.K.; Whitehouse, D.; Ryder, T.; Jagdmann, E.; Andreoli, M.; Mazur, A.; Padmanilayam, M.; Schroeter, H.; Golebiowski, A.; Podjarny, A.
Deposited on : 2012-12-13
Resolution : 2.00 Å(reported)

This is a wwPDB X-ray Structure Validation Summary Report for a publicly released PDB entry.
We welcome your comments at validation@mail.wwpdb.org
A user guide is available at
<http://wwpdb.org/validation/2016/XrayValidationReportHelp>
with specific help available everywhere you see the ⓘ symbol.

The following versions of software and data (see [references ⓘ](#)) were used in the production of this report:

MolProbity : 4.02b-467
Mogul : 1.7 (RC4), CSD as536be (2015)
Xtriage (Phenix) : 1.9-1692
EDS : rb-20026688
Percentile statistics : 20151230.v01 (using entries in the PDB archive December 30th 2015)
Refmac : 5.8.0135
CCP4 : 6.5.0
Ideal geometry (proteins) : Engh & Huber (2001)
Ideal geometry (DNA, RNA) : Parkinson et al. (1996)
Validation Pipeline (wwPDB-VP) : trunk26865

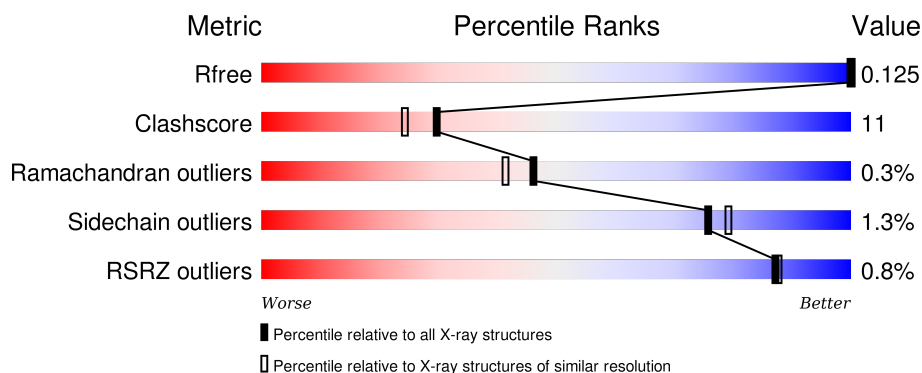
1 Overall quality at a glance

The following experimental techniques were used to determine the structure:

X-RAY DIFFRACTION

The reported resolution of this entry is 2.00 Å.

Percentile scores (ranging between 0-100) for global validation metrics of the entry are shown in the following graphic. The table shows the number of entries on which the scores are based.



Metric	Whole archive (#Entries)	Similar resolution (#Entries, resolution range(Å))
R_{free}	91344	6249 (2.00-2.00)
Clashscore	102246	7340 (2.00-2.00)
Ramachandran outliers	100387	7248 (2.00-2.00)
Sidechain outliers	100360	7247 (2.00-2.00)
RSRZ outliers	91569	6262 (2.00-2.00)

The table below summarises the geometric issues observed across the polymeric chains and their fit to the electron density. The red, orange, yellow and green segments on the lower bar indicate the fraction of residues that contain outliers for ≥ 3 , 2, 1 and 0 types of geometric quality criteria. A grey segment represents the fraction of residues that are not modelled. The numeric value for each fraction is indicated below the corresponding segment, with a dot representing fractions $\leq 5\%$. The upper red bar (where present) indicates the fraction of residues that have poor fit to the electron density. The numeric value is given above the bar.

Mol	Chain	Length	Quality of chain
1	A	314	<div> <div style="width: 84%;"></div> <div style="width: 15%;"></div> <div style="width: 1%;"></div> </div> <div>84% 15% .</div>
1	B	314	<div> <div style="width: 2%;"></div> <div style="width: 76%;"></div> <div style="width: 22%;"></div> </div> <div>2% 76% 22% .</div>

2 Entry composition [i](#)

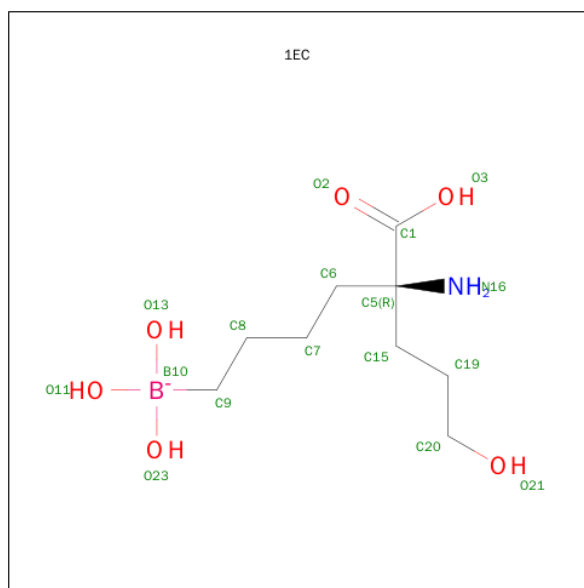
There are 4 unique types of molecules in this entry. The entry contains 5013 atoms, of which 0 are hydrogens and 0 are deuteriums.

In the tables below, the ZeroOcc column contains the number of atoms modelled with zero occupancy, the AltConf column contains the number of residues with at least one atom in alternate conformation and the Trace column contains the number of residues modelled with at most 2 atoms.

- Molecule 1 is a protein called Arginase-1.

Mol	Chain	Residues	Atoms					ZeroOcc	AltConf	Trace
1	A	314	Total	C	N	O	S	0	0	0
			2387	1522	406	453	6			
1	B	314	Total	C	N	O	S	0	1	0
			2395	1527	409	453	6			

- Molecule 2 is [(5R)-5-AMINO-5-CARBOXY-8-HYDROXYOCTYL](TRIHYDROXY)BORATE(1-) (three-letter code: 1EC) (formula: C₉H₂₁BN₂O₆).



Mol	Chain	Residues	Atoms				ZeroOcc	AltConf
2	A	1	Total	B	C	N	O	0
			17	1	9	1	6	
2	B	1	Total	B	C	N	O	0
			17	1	9	1	6	

- Molecule 3 is MANGANESE (II) ION (three-letter code: MN) (formula: Mn).

Mol	Chain	Residues	Atoms		ZeroOcc	AltConf
3	B	2	Total 2	Mn 2	0	0
3	A	2	Total 2	Mn 2	0	0

- Molecule 4 is water.

Mol	Chain	Residues	Atoms		ZeroOcc	AltConf
4	A	107	Total 109	O 109	0	2
4	B	82	Total 84	O 84	0	2

4 Data and refinement statistics

Property	Value	Source
Space group	P 3	Depositor
Cell constants a, b, c, α , β , γ	90.07Å 90.07Å 69.27Å 90.00° 90.00° 120.00°	Depositor
Resolution (Å)	21.64 – 2.00 21.64 – 2.00	Depositor EDS
% Data completeness (in resolution range)	96.8 (21.64-2.00) 96.8 (21.64-2.00)	Depositor EDS
R_{merge}	0.08	Depositor
R_{sym}	(Not available)	Depositor
$\langle I/\sigma(I) \rangle$ ¹	10.10 (at 2.01Å)	Xtriage
Refinement program	PHENIX (phenix.refine: 1.8_1069)	Depositor
R, R_{free}	0.106 , 0.127 0.103 , 0.125	Depositor DCC
R_{free} test set	2079 reflections (5.33%)	DCC
Wilson B-factor (Å ²)	21.1	Xtriage
Anisotropy	0.053	Xtriage
Bulk solvent k_{sol} (e/Å ³), B_{sol} (Å ²)	0.36 , 44.4	EDS
Estimated twinning fraction	0.020 for -h,-k,l 0.021 for -h,-k,l 0.029 for h,-h-k,-l 0.020 for -k,-h,-l	Xtriage
Reported twinning fraction	0.020 for -h,-k,l	Depositor
L-test for twinning ²	$\langle L \rangle = 0.49$, $\langle L^2 \rangle = 0.31$	Xtriage
Outliers	0 of 41127 reflections	Xtriage
F_o, F_c correlation	0.98	EDS
Total number of atoms	5013	wwPDB-VP
Average B, all atoms (Å ²)	21.0	wwPDB-VP

Xtriage's analysis on translational NCS is as follows: *The largest off-origin peak in the Patterson function is 4.28% of the height of the origin peak. No significant pseudotranslation is detected.*

¹Intensities estimated from amplitudes.

²Theoretical values of $\langle |L| \rangle$, $\langle L^2 \rangle$ for acentric reflections are 0.5, 0.375 respectively for untwinned datasets, and 0.333, 0.2 for perfectly twinned datasets.

5 Model quality

5.1 Standard geometry

Bond lengths and bond angles in the following residue types are not validated in this section: 1EC, MN

The Z score for a bond length (or angle) is the number of standard deviations the observed value is removed from the expected value. A bond length (or angle) with $|Z| > 5$ is considered an outlier worth inspection. RMSZ is the root-mean-square of all Z scores of the bond lengths (or angles).

Mol	Chain	Bond lengths		Bond angles	
		RMSZ	$\# Z > 5$	RMSZ	$\# Z > 5$
1	A	0.72	1/2437 (0.0%)	0.81	1/3307 (0.0%)
1	B	0.72	1/2448 (0.0%)	0.78	0/3321
All	All	0.72	2/4885 (0.0%)	0.79	1/6628 (0.0%)

Chiral center outliers are detected by calculating the chiral volume of a chiral center and verifying if the center is modelled as a planar moiety or with the opposite hand. A planarity outlier is detected by checking planarity of atoms in a peptide group, atoms in a mainchain group or atoms of a sidechain that are expected to be planar.

Mol	Chain	#Chirality outliers	#Planarity outliers
1	A	0	1

All (2) bond length outliers are listed below:

Mol	Chain	Res	Type	Atoms	Z	Observed(Å)	Ideal(Å)
1	A	122	TRP	CD2-CE2	5.60	1.48	1.41
1	B	122	TRP	CD2-CE2	5.16	1.47	1.41

All (1) bond angle outliers are listed below:

Mol	Chain	Res	Type	Atoms	Z	Observed(°)	Ideal(°)
1	A	232	ASP	CB-CG-OD1	5.05	122.85	118.30

There are no chirality outliers.

All (1) planarity outliers are listed below:

Mol	Chain	Res	Type	Group
1	A	44	GLU	Peptide

5.2 Too-close contacts

In the following table, the Non-H and H(model) columns list the number of non-hydrogen atoms and hydrogen atoms in the chain respectively. The H(added) column lists the number of hydrogen atoms added and optimized by MolProbity. The Clashes column lists the number of clashes within the asymmetric unit, whereas Symm-Clashes lists symmetry related clashes.

Mol	Chain	Non-H	H(model)	H(added)	Clashes	Symm-Clashes
1	A	2387	0	2432	42	0
1	B	2395	0	2445	67	0
2	A	17	0	18	2	0
2	B	17	0	18	1	0
3	A	2	0	0	0	0
3	B	2	0	0	0	0
4	A	109	0	0	6	0
4	B	84	0	0	3	0
All	All	5013	0	4913	109	0

The all-atom clashscore is defined as the number of clashes found per 1000 atoms (including hydrogen atoms). The all-atom clashscore for this structure is 11.

The worst 5 of 109 close contacts within the same asymmetric unit are listed below, sorted by their clash magnitude.

Atom-1	Atom-2	Interatomic distance (Å)	Clash overlap (Å)
1:A:6:ARG:HD3	1:A:304:PHE:HD1	1.22	1.02
1:A:6:ARG:HD3	1:A:304:PHE:CD1	2.08	0.87
1:A:24:VAL:HG12	1:A:279:ASN:HB2	1.58	0.86
1:B:224:LYS:HG3	1:B:269:LEU:HD11	1.59	0.81
1:B:33:LYS:HD2	4:B:660:HOH:O	1.85	0.76

There are no symmetry-related clashes.

5.3 Torsion angles

5.3.1 Protein backbone

In the following table, the Percentiles column shows the percent Ramachandran outliers of the chain as a percentile score with respect to all X-ray entries followed by that with respect to entries of similar resolution.

The Analysed column shows the number of residues for which the backbone conformation was analysed, and the total number of residues.

Mol	Chain	Analysed	Favoured	Allowed	Outliers	Percentiles	
1	A	312/314 (99%)	299 (96%)	12 (4%)	1 (0%)	46	41
1	B	313/314 (100%)	295 (94%)	17 (5%)	1 (0%)	46	41
All	All	625/628 (100%)	594 (95%)	29 (5%)	2 (0%)	46	41

All (2) Ramachandran outliers are listed below:

Mol	Chain	Res	Type
1	A	143	GLN
1	B	143	GLN

5.3.2 Protein sidechains ⓘ

In the following table, the Percentiles column shows the percent sidechain outliers of the chain as a percentile score with respect to all X-ray entries followed by that with respect to entries of similar resolution.

The Analysed column shows the number of residues for which the sidechain conformation was analysed, and the total number of residues.

Mol	Chain	Analysed	Rotameric	Outliers	Percentiles	
1	A	263/263 (100%)	261 (99%)	2 (1%)	86	89
1	B	264/263 (100%)	259 (98%)	5 (2%)	65	67
All	All	527/526 (100%)	520 (99%)	7 (1%)	76	79

5 of 7 residues with a non-rotameric sidechain are listed below:

Mol	Chain	Res	Type
1	B	136	THR
1	B	225	ARG
1	B	141	HIS
1	A	141	HIS
1	B	224	LYS

Some sidechains can be flipped to improve hydrogen bonding and reduce clashes. There are no such sidechains identified.

5.3.3 RNA ⓘ

There are no RNA molecules in this entry.

5.4 Non-standard residues in protein, DNA, RNA chains [i](#)

There are no non-standard protein/DNA/RNA residues in this entry.

5.5 Carbohydrates [i](#)

There are no carbohydrates in this entry.

5.6 Ligand geometry [i](#)

Of 6 ligands modelled in this entry, 4 are monoatomic - leaving 2 for Mogul analysis.

In the following table, the Counts columns list the number of bonds (or angles) for which Mogul statistics could be retrieved, the number of bonds (or angles) that are observed in the model and the number of bonds (or angles) that are defined in the chemical component dictionary. The Link column lists molecule types, if any, to which the group is linked. The Z score for a bond length (or angle) is the number of standard deviations the observed value is removed from the expected value. A bond length (or angle) with $|Z| > 2$ is considered an outlier worth inspection. RMSZ is the root-mean-square of all Z scores of the bond lengths (or angles).

Mol	Type	Chain	Res	Link	Bond lengths			Bond angles		
					Counts	RMSZ	$\# Z > 2$	Counts	RMSZ	$\# Z > 2$
2	1EC	A	401	3	9,16,16	1.04	1 (11%)	8,22,22	1.23	1 (12%)
2	1EC	B	501	3	9,16,16	0.72	0	8,22,22	1.61	1 (12%)

In the following table, the Chirals column lists the number of chiral outliers, the number of chiral centers analysed, the number of these observed in the model and the number defined in the chemical component dictionary. Similar counts are reported in the Torsion and Rings columns. '-' means no outliers of that kind were identified.

Mol	Type	Chain	Res	Link	Chirals	Torsions	Rings
2	1EC	A	401	3	-	0/11/20/20	0/0/0/0
2	1EC	B	501	3	-	0/11/20/20	0/0/0/0

All (1) bond length outliers are listed below:

Mol	Chain	Res	Type	Atoms	Z	Observed(Å)	Ideal(Å)
2	A	401	1EC	C15-C5	-2.44	1.52	1.55

All (2) bond angle outliers are listed below:

Mol	Chain	Res	Type	Atoms	Z	Observed(°)	Ideal(°)
2	B	501	1EC	C6-C5-C15	-3.27	106.11	112.07

Continued on next page...

Continued from previous page...

Mol	Chain	Res	Type	Atoms	Z	Observed(°)	Ideal(°)
2	A	401	1EC	C6-C5-C15	-2.84	106.89	112.07

There are no chirality outliers.

There are no torsion outliers.

There are no ring outliers.

2 monomers are involved in 3 short contacts:

Mol	Chain	Res	Type	Clashes	Symm-Clashes
2	A	401	1EC	2	0
2	B	501	1EC	1	0

5.7 Other polymers [i](#)

There are no such residues in this entry.

5.8 Polymer linkage issues [i](#)

There are no chain breaks in this entry.

6 Fit of model and data [i](#)

6.1 Protein, DNA and RNA chains [i](#)

In the following table, the column labelled ‘#RSRZ> 2’ contains the number (and percentage) of RSRZ outliers, followed by percent RSRZ outliers for the chain as percentile scores relative to all X-ray entries and entries of similar resolution. The OWAB column contains the minimum, median, 95th percentile and maximum values of the occupancy-weighted average B-factor per residue. The column labelled ‘Q< 0.9’ lists the number of (and percentage) of residues with an average occupancy less than 0.9.

Mol	Chain	Analysed	<RSRZ>	#RSRZ>2	OWAB(Å ²)	Q<0.9
1	A	314/314 (100%)	-0.87	0 100 100	12, 19, 31, 53	0
1	B	314/314 (100%)	-0.76	5 (1%) 74 75	13, 21, 36, 53	0
All	All	628/628 (100%)	-0.82	5 (0%) 87 88	12, 20, 34, 53	0

All (5) RSRZ outliers are listed below:

Mol	Chain	Res	Type	RSRZ
1	B	315	ILE	3.4
1	B	314	PRO	3.4
1	B	5	SER	2.6
1	B	56	ALA	2.2
1	B	222	ARG	2.1

6.2 Non-standard residues in protein, DNA, RNA chains [i](#)

There are no non-standard protein/DNA/RNA residues in this entry.

6.3 Carbohydrates [i](#)

There are no carbohydrates in this entry.

6.4 Ligands [i](#)

In the following table, the Atoms column lists the number of modelled atoms in the group and the number defined in the chemical component dictionary. LLDF column lists the quality of electron density of the group with respect to its neighbouring residues in protein, DNA or RNA chains. The B-factors column lists the minimum, median, 95th percentile and maximum values of B factors of atoms in the group. The column labelled ‘Q< 0.9’ lists the number of atoms with occupancy less than 0.9.

Mol	Type	Chain	Res	Atoms	RSCC	RSR	LLDF	B-factors(\AA^2)	Q<0.9
2	1EC	A	401	17/17	0.97	0.07	-0.16	16,18,27,35	0
2	1EC	B	501	17/17	0.97	0.06	-0.51	17,20,28,28	0
3	MN	A	403	1/1	1.00	0.05	-0.94	20,20,20,20	0
3	MN	B	502	1/1	1.00	0.04	-1.34	19,19,19,19	0
3	MN	A	402	1/1	1.00	0.04	-1.46	18,18,18,18	0
3	MN	B	503	1/1	1.00	0.05	-1.47	20,20,20,20	0

6.5 Other polymers [i](#)

There are no such residues in this entry.