



wwPDB X-ray Structure Validation Summary Report ⓘ

Jan 31, 2016 – 08:02 PM GMT

PDB ID : 1IGX
Title : Crystal Structure of Eicosapentanoic Acid Bound in the Cyclooxygenase Channel of Prostaglandin Endoperoxide H Synthase-1.
Authors : Malkowski, M.G.; Thuresson, E.D.; Smith, W.L.; Garavito, R.M.
Deposited on : 2001-04-18
Resolution : 3.10 Å(reported)

This is a wwPDB X-ray Structure Validation Summary Report for a publicly released PDB entry.
We welcome your comments at validation@mail.wwpdb.org
A user guide is available at
<http://wwpdb.org/validation/2016/XrayValidationReportHelp>
with specific help available everywhere you see the ⓘ symbol.

The following versions of software and data (see [references ⓘ](#)) were used in the production of this report:

MolProbity : 4.02b-467
Mogul : 1.7 (RC4), CSD as536be (2015)
Xtriage (Phenix) : 1.9-1692
EDS : rb-20026688
Percentile statistics : 20151230.v01 (using entries in the PDB archive December 30th 2015)
Refmac : 5.8.0135
CCP4 : 6.5.0
Ideal geometry (proteins) : Engh & Huber (2001)
Ideal geometry (DNA, RNA) : Parkinson et al. (1996)
Validation Pipeline (wwPDB-VP) : trunk26865

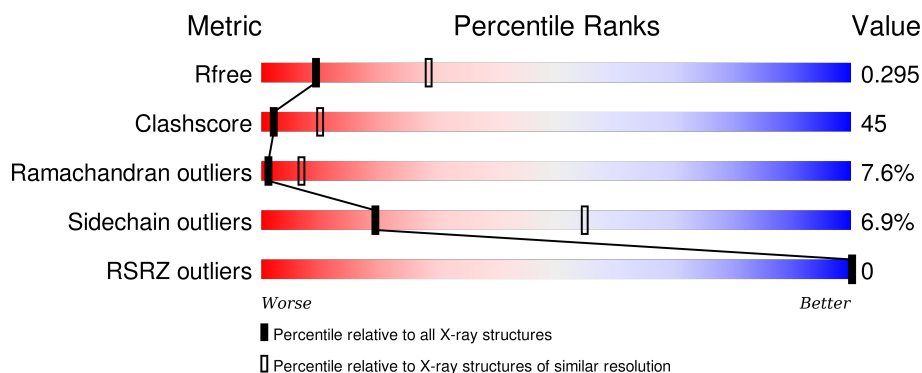
1 Overall quality at a glance

The following experimental techniques were used to determine the structure:

X-RAY DIFFRACTION

The reported resolution of this entry is 3.10 Å.

Percentile scores (ranging between 0-100) for global validation metrics of the entry are shown in the following graphic. The table shows the number of entries on which the scores are based.



Metric	Whole archive (#Entries)	Similar resolution (#Entries, resolution range(Å))
R_{free}	91344	1114 (3.14-3.06)
Clashscore	102246	1222 (3.14-3.06)
Ramachandran outliers	100387	1174 (3.14-3.06)
Sidechain outliers	100360	1174 (3.14-3.06)
RSRZ outliers	91569	1119 (3.14-3.06)

The table below summarises the geometric issues observed across the polymeric chains and their fit to the electron density. The red, orange, yellow and green segments on the lower bar indicate the fraction of residues that contain outliers for ≥ 3 , 2, 1 and 0 types of geometric quality criteria. A grey segment represents the fraction of residues that are not modelled. The numeric value for each fraction is indicated below the corresponding segment, with a dot representing fractions $\leq 5\%$. The upper red bar (where present) indicates the fraction of residues that have poor fit to the electron density. The numeric value is given above the bar.

Mol	Chain	Length	Quality of chain
1	A	576	

The following table lists non-polymeric compounds, carbohydrate monomers and non-standard residues in protein, DNA, RNA chains that are outliers for geometric or electron-density-fit criteria:

Mol	Type	Chain	Res	Chirality	Geometry	Clashes	Electron density
2	NAG	A	661	-	-	-	X

Continued on next page...

Continued from previous page...

Mol	Type	Chain	Res	Chirality	Geometry	Clashes	Electron density
5	BOG	A	752	-	-	-	X
6	BGC	A	751	-	-	-	X
7	COH	A	601	-	-	-	X
8	EPA	A	700	-	-	X	X

2 Entry composition

There are 9 unique types of molecules in this entry. The entry contains 4673 atoms, of which 0 are hydrogens and 0 are deuteriums.

In the tables below, the ZeroOcc column contains the number of atoms modelled with zero occupancy, the AltConf column contains the number of residues with at least one atom in alternate conformation and the Trace column contains the number of residues modelled with at most 2 atoms.

- Molecule 1 is a protein called Prostaglandin Endoperoxide H Synthase-1.

Mol	Chain	Residues	Atoms					ZeroOcc	AltConf	Trace
1	A	553	Total	C	N	O	S	0	0	0
			4383	2850	732	773	28			

- Molecule 2 is a polymer of unknown type called SUGAR (NAG-NAG).

Mol	Chain	Residues	Atoms				ZeroOcc	AltConf
2	A	2	Total	C	N	O	0	0
			28	16	2	10		

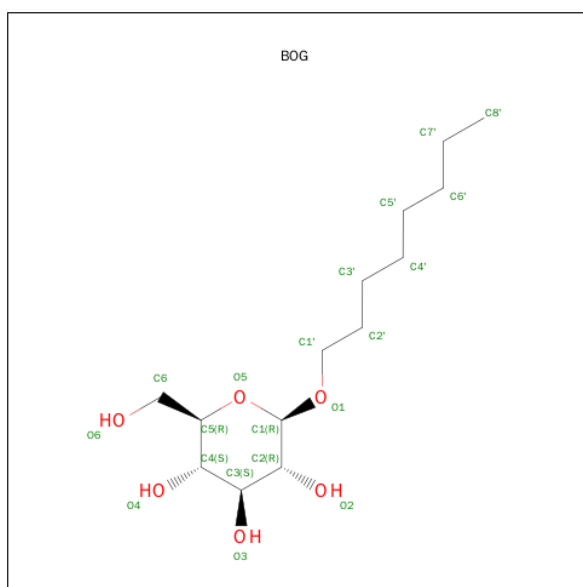
- Molecule 3 is a polymer of unknown type called SUGAR (NAG-NAG-BMA-BMA-BMA).

Mol	Chain	Residues	Atoms				ZeroOcc	AltConf
3	A	5	Total	C	N	O	0	0
			61	34	2	25		

- Molecule 4 is a polymer of unknown type called SUGAR (2-MER).

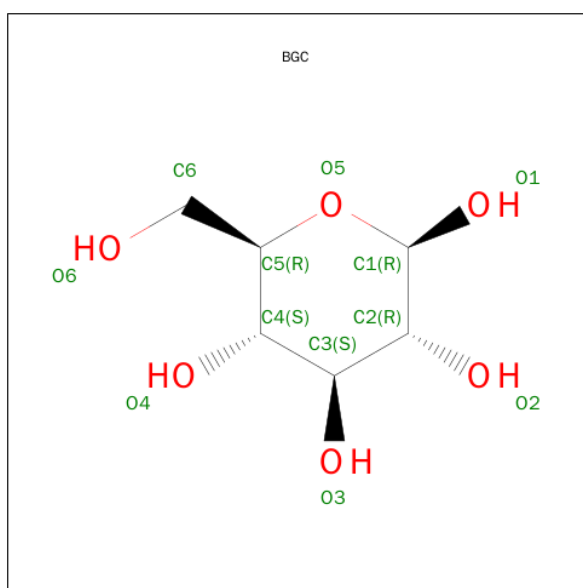
Mol	Chain	Residues	Atoms				ZeroOcc	AltConf
4	A	2	Total	C	N	O	0	0
			28	16	2	10		

- Molecule 5 is SUGAR (B-OCTYLGLUCOSIDE) (three-letter code: BOG) (formula: C₁₄H₂₈O₆).



Mol	Chain	Residues	Atoms			ZeroOcc	AltConf
5	A	1	Total	C	O	0	0
			20	14	6		
5	A	1	Total	C	O	0	0
			20	14	6		

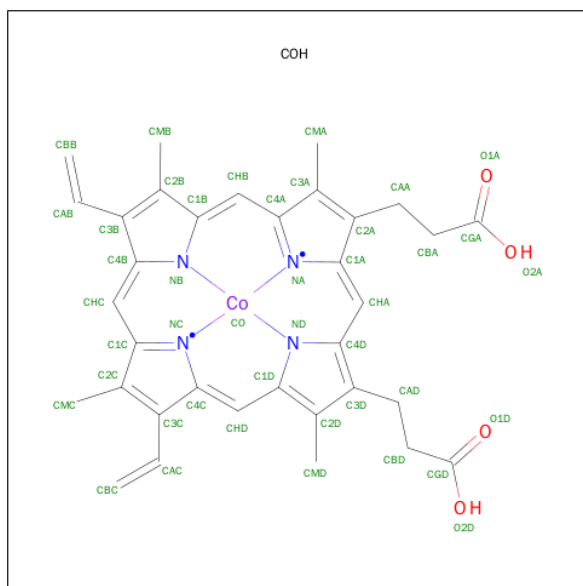
- Molecule 6 is SUGAR (GLUCOSE) (three-letter code: BGC) (formula: $C_6H_{12}O_6$).



Mol	Chain	Residues	Atoms			ZeroOcc	AltConf
6	A	1	Total	C	O	0	0
			12	6	6		

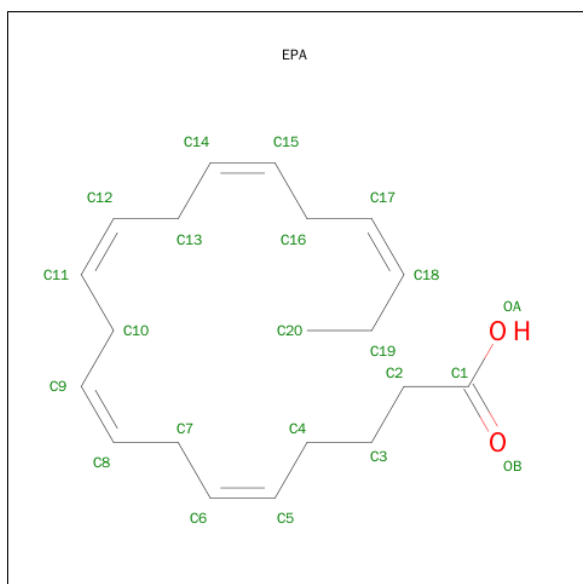
- Molecule 7 is PROTOPORPHYRIN IX CONTAINING CO (three-letter code: COH) (for-

mula: $C_{34}H_{32}CoN_4O_4$).



Mol	Chain	Residues	Atoms				ZeroOcc	AltConf
7	A	1	Total	C	Co	N	O	0
			43	34	1	4	4	

- Molecule 8 is 5,8,11,14,17-EICOSAPENTAENOIC ACID (three-letter code: EPA) (formula: $C_{20}H_{30}O_2$).



Mol	Chain	Residues	Atoms			ZeroOcc	AltConf
8	A	1	Total	C	O	0	0
			22	20	2		

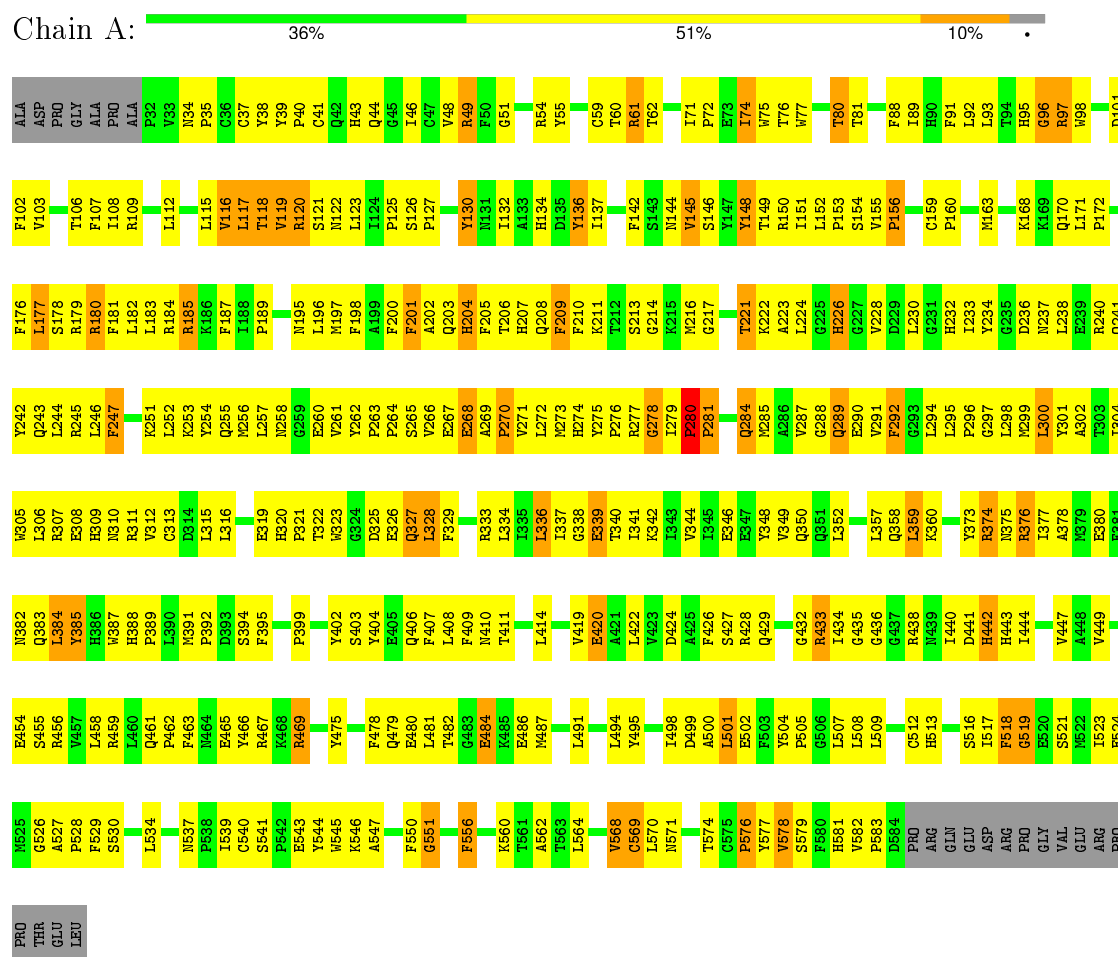
- Molecule 9 is water.

Mol	Chain	Residues	Atoms		ZeroOcc	AltConf
9	A	56	Total	O	0	0
			56	56		

3 Residue-property plots

These plots are drawn for all protein, RNA and DNA chains in the entry. The first graphic for a chain summarises the proportions of errors displayed in the second graphic. The second graphic shows the sequence view annotated by issues in geometry and electron density. Residues are color-coded according to the number of geometric quality criteria for which they contain at least one outlier: green = 0, yellow = 1, orange = 2 and red = 3 or more. A red dot above a residue indicates a poor fit to the electron density ($RSRZ > 2$). Stretches of 2 or more consecutive residues without any outlier are shown as a green connector. Residues present in the sample, but not in the model, are shown in grey.

- Molecule 1: Prostaglandin Endoperoxide H Synthase-1



4 Data and refinement statistics

Property	Value	Source
Space group	P 65 2 2	Depositor
Cell constants a, b, c, α , β , γ	182.17Å 182.17Å 103.11Å 90.00° 90.00° 120.00°	Depositor
Resolution (Å)	20.00 – 3.10 19.96 – 3.10	Depositor EDS
% Data completeness (in resolution range)	90.2 (20.00-3.10) 95.2 (19.96-3.10)	Depositor EDS
R_{merge}	0.09	Depositor
R_{sym}	(Not available)	Depositor
$\langle I/\sigma(I) \rangle$ ¹	5.55 (at 3.09Å)	Xtriage
Refinement program	CNS 0.9	Depositor
R, R_{free}	0.228 , 0.294 0.232 , 0.295	Depositor DCC
R_{free} test set	740 reflections (4.33%)	DCC
Wilson B-factor (Å ²)	66.1	Xtriage
Anisotropy	0.000	Xtriage
Bulk solvent k_{sol} (e/Å ³), B_{sol} (Å ²)	0.25 , 41.4	EDS
Estimated twinning fraction	No twinning to report.	Xtriage
L-test for twinning ²	$\langle L \rangle = 0.46$, $\langle L^2 \rangle = 0.29$	Xtriage
Outliers	0 of 18576 reflections	Xtriage
F_o, F_c correlation	0.91	EDS
Total number of atoms	4673	wwPDB-VP
Average B, all atoms (Å ²)	39.0	wwPDB-VP

Xtriage's analysis on translational NCS is as follows: *The largest off-origin peak in the Patterson function is 2.51% of the height of the origin peak. No significant pseudotranslation is detected.*

¹Intensities estimated from amplitudes.

²Theoretical values of $\langle |L| \rangle$, $\langle L^2 \rangle$ for acentric reflections are 0.5, 0.375 respectively for untwinned datasets, and 0.333, 0.2 for perfectly twinned datasets.

5 Model quality [i](#)

5.1 Standard geometry [i](#)

Bond lengths and bond angles in the following residue types are not validated in this section: BGC, NAG, NDG, BMA, BOG, COH, MAN, EPA

The Z score for a bond length (or angle) is the number of standard deviations the observed value is removed from the expected value. A bond length (or angle) with $|Z| > 5$ is considered an outlier worth inspection. RMSZ is the root-mean-square of all Z scores of the bond lengths (or angles).

Mol	Chain	Bond lengths		Bond angles	
		RMSZ	# Z >5	RMSZ	# Z >5
1	A	0.46	0/4522	0.70	0/6161

There are no bond length outliers.

There are no bond angle outliers.

There are no chirality outliers.

There are no planarity outliers.

5.2 Too-close contacts [i](#)

In the following table, the Non-H and H(model) columns list the number of non-hydrogen atoms and hydrogen atoms in the chain respectively. The H(added) column lists the number of hydrogen atoms added and optimized by MolProbity. The Clashes column lists the number of clashes within the asymmetric unit, whereas Symm-Clashes lists symmetry related clashes.

Mol	Chain	Non-H	H(model)	H(added)	Clashes	Symm-Clashes
1	A	4383	0	4190	401	0
2	A	28	0	25	0	0
3	A	61	0	52	4	0
4	A	28	0	25	0	0
5	A	40	0	56	2	0
6	A	12	0	12	4	0
7	A	43	0	30	1	0
8	A	22	0	29	19	0
9	A	56	0	0	11	0
All	All	4673	0	4419	408	0

The all-atom clashscore is defined as the number of clashes found per 1000 atoms (including hydrogen atoms). The all-atom clashscore for this structure is 45.

The worst 5 of 408 close contacts within the same asymmetric unit are listed below, sorted by their clash magnitude.

Atom-1	Atom-2	Interatomic distance (Å)	Clash overlap (Å)
1:A:245:ARG:HA	9:A:853:HOH:O	1.44	1.13
1:A:243:GLN:HG3	1:A:270:PRO:HG2	1.38	1.02
1:A:156:PRO:HB2	1:A:159:CYS:SG	2.03	0.98
1:A:103:VAL:HG13	1:A:108:ILE:HG22	1.46	0.97
1:A:109:ARG:HH21	1:A:360:LYS:HB2	1.30	0.97

There are no symmetry-related clashes.

5.3 Torsion angles [i](#)

5.3.1 Protein backbone [i](#)

In the following table, the Percentiles column shows the percent Ramachandran outliers of the chain as a percentile score with respect to all X-ray entries followed by that with respect to entries of similar resolution.

The Analysed column shows the number of residues for which the backbone conformation was analysed, and the total number of residues.

Mol	Chain	Analysed	Favoured	Allowed	Outliers	Percentiles
1	A	551/576 (96%)	406 (74%)	103 (19%)	42 (8%)	1 7

5 of 42 Ramachandran outliers are listed below:

Mol	Chain	Res	Type
1	A	117	LEU
1	A	223	ALA
1	A	268	GLU
1	A	277	ARG
1	A	281	PRO

5.3.2 Protein sidechains [i](#)

In the following table, the Percentiles column shows the percent sidechain outliers of the chain as a percentile score with respect to all X-ray entries followed by that with respect to entries of similar resolution.

The Analysed column shows the number of residues for which the sidechain conformation was analysed, and the total number of residues.

Mol	Chain	Analysed	Rotameric	Outliers	Percentiles
1	A	462/506 (91%)	430 (93%)	32 (7%)	19 55

5 of 32 residues with a non-rotameric sidechain are listed below:

Mol	Chain	Res	Type
1	A	284	GLN
1	A	374	ARG
1	A	556	PHE
1	A	336	LEU
1	A	375	ASN

Some sidechains can be flipped to improve hydrogen bonding and reduce clashes. 5 of 12 such sidechains are listed below:

Mol	Chain	Res	Type
1	A	241	GLN
1	A	274	HIS
1	A	429	GLN
1	A	237	ASN
1	A	375	ASN

5.3.3 RNA ⓘ

There are no RNA molecules in this entry.

5.4 Non-standard residues in protein, DNA, RNA chains ⓘ

There are no non-standard protein/DNA/RNA residues in this entry.

5.5 Carbohydrates ⓘ

9 carbohydrates are modelled in this entry.

In the following table, the Counts columns list the number of bonds (or angles) for which Mogul statistics could be retrieved, the number of bonds (or angles) that are observed in the model and the number of bonds (or angles) that are defined in the chemical component dictionary. The Link column lists molecule types, if any, to which the group is linked. The Z score for a bond length (or angle) is the number of standard deviations the observed value is removed from the expected value. A bond length (or angle) with $|Z| > 2$ is considered an outlier worth inspection. RMSZ is the root-mean-square of all Z scores of the bond lengths (or angles).

Mol	Type	Chain	Res	Link	Bond lengths			Bond angles		
					Counts	RMSZ	# Z > 2	Counts	RMSZ	# Z > 2
2	NAG	A	661	1,2	14,14,15	0.78	0	15,19,21	1.33	2 (13%)
2	NDG	A	662	2	14,14,15	0.62	0	15,19,21	1.23	3 (20%)
3	NAG	A	671	1,3	14,14,15	0.69	0	15,19,21	1.21	2 (13%)
3	NAG	A	672	3	14,14,15	0.91	0	15,19,21	1.27	1 (6%)
3	BMA	A	673	3	11,11,12	1.21	2 (18%)	14,15,17	1.90	3 (21%)
3	BMA	A	674	3	11,11,12	1.17	1 (9%)	14,15,17	1.13	1 (7%)
3	MAN	A	675	3	11,11,12	0.67	0	14,15,17	1.25	3 (21%)
4	NAG	A	681	1,4	14,14,15	0.83	1 (7%)	15,19,21	0.95	1 (6%)
4	NAG	A	682	4	14,14,15	0.72	0	15,19,21	1.26	2 (13%)

In the following table, the Chirals column lists the number of chiral outliers, the number of chiral centers analysed, the number of these observed in the model and the number defined in the chemical component dictionary. Similar counts are reported in the Torsion and Rings columns. '-' means no outliers of that kind were identified.

Mol	Type	Chain	Res	Link	Chirals	Torsions	Rings
2	NAG	A	661	1,2	-	0/6/23/26	0/1/1/1
2	NDG	A	662	2	-	0/6/23/26	0/1/1/1
3	NAG	A	671	1,3	-	0/6/23/26	0/1/1/1
3	NAG	A	672	3	-	0/6/23/26	0/1/1/1
3	BMA	A	673	3	-	0/2/19/22	0/1/1/1
3	BMA	A	674	3	-	0/2/19/22	1/1/1/1
3	MAN	A	675	3	-	0/2/19/22	1/1/1/1
4	NAG	A	681	1,4	-	0/6/23/26	0/1/1/1
4	NAG	A	682	4	-	0/6/23/26	0/1/1/1

All (4) bond length outliers are listed below:

Mol	Chain	Res	Type	Atoms	Z	Observed(Å)	Ideal(Å)
3	A	674	BMA	C2-C3	2.07	1.55	1.52
4	A	681	NAG	C1-C2	2.11	1.55	1.52
3	A	673	BMA	O5-C1	2.22	1.47	1.43
3	A	673	BMA	C1-C2	2.47	1.58	1.52

The worst 5 of 18 bond angle outliers are listed below:

Mol	Chain	Res	Type	Atoms	Z	Observed(°)	Ideal(°)
3	A	672	NAG	C4-C3-C2	-3.83	105.28	111.23
4	A	682	NAG	C2-N2-C7	-3.33	118.76	123.04
2	A	661	NAG	C4-C3-C2	-3.28	106.13	111.23

Continued on next page...

Continued from previous page...

Mol	Chain	Res	Type	Atoms	Z	Observed(°)	Ideal(°)
3	A	671	NAG	C2-N2-C7	-2.71	119.56	123.04
2	A	661	NAG	C2-N2-C7	-2.59	119.71	123.04

There are no chirality outliers.

There are no torsion outliers.

All (2) ring outliers are listed below:

Mol	Chain	Res	Type	Atoms
3	A	675	MAN	C1-C2-C3-C4-C5-O5
3	A	674	BMA	C1-C2-C3-C4-C5-O5

3 monomers are involved in 4 short contacts:

Mol	Chain	Res	Type	Clashes	Symm-Clashes
3	A	671	NAG	1	0
3	A	672	NAG	3	0
3	A	673	BMA	1	0

5.6 Ligand geometry [i](#)

5 ligands are modelled in this entry.

In the following table, the Counts columns list the number of bonds (or angles) for which Mogul statistics could be retrieved, the number of bonds (or angles) that are observed in the model and the number of bonds (or angles) that are defined in the chemical component dictionary. The Link column lists molecule types, if any, to which the group is linked. The Z score for a bond length (or angle) is the number of standard deviations the observed value is removed from the expected value. A bond length (or angle) with $|Z| > 2$ is considered an outlier worth inspection. RMSZ is the root-mean-square of all Z scores of the bond lengths (or angles).

Mol	Type	Chain	Res	Link	Bond lengths			Bond angles		
					Counts	RMSZ	$\# Z > 2$	Counts	RMSZ	$\# Z > 2$
7	COH	A	601	1	28,50,50	1.83	7 (25%)	19,82,82	2.25	9 (47%)
8	EPA	A	700	-	18,21,21	0.71	0	18,21,21	1.14	0
5	BOG	A	750	-	20,20,20	0.58	0	25,25,25	0.75	1 (4%)
6	BGC	A	751	-	12,12,12	0.45	0	17,17,17	0.80	1 (5%)
5	BOG	A	752	-	20,20,20	0.65	0	25,25,25	0.71	1 (4%)

In the following table, the Chirals column lists the number of chiral outliers, the number of chiral centers analysed, the number of these observed in the model and the number defined in the chemical component dictionary. Similar counts are reported in the Torsion and Rings columns. '-' means

no outliers of that kind were identified.

Mol	Type	Chain	Res	Link	Chirals	Torsions	Rings
7	COH	A	601	1	-	0/6/54/54	0/0/8/8
8	EPA	A	700	-	-	0/17/19/19	0/0/0/0
5	BOG	A	750	-	-	0/11/31/31	0/1/1/1
6	BGC	A	751	-	-	0/2/22/22	0/1/1/1
5	BOG	A	752	-	-	0/11/31/31	0/1/1/1

The worst 5 of 7 bond length outliers are listed below:

Mol	Chain	Res	Type	Atoms	Z	Observed(Å)	Ideal(Å)
7	A	601	COH	C3B-C2B	-2.74	1.36	1.40
7	A	601	COH	CBC-CAC	2.18	1.44	1.28
7	A	601	COH	C2A-C3A	2.32	1.44	1.37
7	A	601	COH	CMC-C2C	2.70	1.57	1.51
7	A	601	COH	CAD-C3D	2.96	1.57	1.52

The worst 5 of 12 bond angle outliers are listed below:

Mol	Chain	Res	Type	Atoms	Z	Observed(°)	Ideal(°)
7	A	601	COH	CAD-C3D-C4D	-3.16	123.58	127.01
7	A	601	COH	CAA-C2A-C3A	-2.23	122.64	129.00
6	A	751	BGC	C1-C2-C3	-2.02	107.42	110.43
7	A	601	COH	CMA-C3A-C2A	2.06	129.54	125.24
5	A	752	BOG	C1'-O1-C1	2.07	117.56	113.94

There are no chirality outliers.

There are no torsion outliers.

There are no ring outliers.

4 monomers are involved in 26 short contacts:

Mol	Chain	Res	Type	Clashes	Symm-Clashes
7	A	601	COH	1	0
8	A	700	EPA	19	0
5	A	750	BOG	2	0
6	A	751	BGC	4	0

5.7 Other polymers

There are no such residues in this entry.

5.8 Polymer linkage issues ⓘ

There are no chain breaks in this entry.

6 Fit of model and data [i](#)

6.1 Protein, DNA and RNA chains [i](#)

In the following table, the column labelled ‘#RSRZ> 2’ contains the number (and percentage) of RSRZ outliers, followed by percent RSRZ outliers for the chain as percentile scores relative to all X-ray entries and entries of similar resolution. The OWAB column contains the minimum, median, 95th percentile and maximum values of the occupancy-weighted average B-factor per residue. The column labelled ‘Q< 0.9’ lists the number of (and percentage) of residues with an average occupancy less than 0.9.

Mol	Chain	Analysed	<RSRZ>	#RSRZ>2	OWAB(Å ²)	Q<0.9
1	A	553/576 (96%)	-0.70	0 100 100	11, 37, 61, 101	0

There are no RSRZ outliers to report.

6.2 Non-standard residues in protein, DNA, RNA chains [i](#)

There are no non-standard protein/DNA/RNA residues in this entry.

6.3 Carbohydrates [i](#)

In the following table, the Atoms column lists the number of modelled atoms in the group and the number defined in the chemical component dictionary. LLDF column lists the quality of electron density of the group with respect to its neighbouring residues in protein, DNA or RNA chains. The B-factors column lists the minimum, median, 95th percentile and maximum values of B factors of atoms in the group. The column labelled ‘Q< 0.9’ lists the number of atoms with occupancy less than 0.9.

Mol	Type	Chain	Res	Atoms	RSCC	RSR	LLDF	B-factors(Å ²)	Q<0.9
2	NAG	A	661	14/15	0.86	0.26	3.13	62,62,62,62	0
4	NAG	A	681	14/15	0.93	0.22	0.46	50,50,50,50	0
3	NAG	A	671	14/15	0.91	0.15	-0.64	40,40,40,40	0
3	BMA	A	674	11/12	0.82	0.19	-	77,77,77,77	0
4	NAG	A	682	14/15	0.85	0.34	-	66,66,66,66	0
3	BMA	A	673	11/12	0.90	0.20	-	70,70,70,70	0
3	NAG	A	672	14/15	0.90	0.25	-	53,53,53,53	0
3	MAN	A	675	11/12	0.86	0.30	-	87,87,87,87	0
2	NDG	A	662	14/15	0.86	0.30	-	74,74,74,74	0

6.4 Ligands [i](#)

In the following table, the Atoms column lists the number of modelled atoms in the group and the number defined in the chemical component dictionary. LLDF column lists the quality of electron density of the group with respect to its neighbouring residues in protein, DNA or RNA chains. The B-factors column lists the minimum, median, 95th percentile and maximum values of B factors of atoms in the group. The column labelled 'Q< 0.9' lists the number of atoms with occupancy less than 0.9.

Mol	Type	Chain	Res	Atoms	RSCC	RSR	LLDF	B-factors(Å ²)	Q<0.9
5	BOG	A	752	20/20	0.66	0.31	6.02	74,74,74,74	0
7	COH	A	601	43/43	0.76	0.39	5.97	80,80,80,80	0
6	BGC	A	751	12/12	0.89	0.30	3.19	80,80,80,80	0
8	EPA	A	700	22/22	0.92	0.21	2.46	51,51,51,51	0
5	BOG	A	750	20/20	0.85	0.27	1.78	57,57,57,57	0

6.5 Other polymers [i](#)

There are no such residues in this entry.