



Full wwPDB X-ray Structure Validation Report ⓘ

Feb 1, 2016 – 09:26 AM GMT

PDB ID : 3IHA
Title : Crystal Structure Analysis of Mglu in its glutamate form
Authors : Yoshimune, K.; Shirakihara, Y.
Deposited on : 2009-07-29
Resolution : 2.60 Å(reported)

This is a Full wwPDB X-ray Structure Validation Report for a publicly released PDB entry.
We welcome your comments at validation@mail.wwpdb.org
A user guide is available at
<http://wwpdb.org/validation/2016/XrayValidationReportHelp>
with specific help available everywhere you see the ⓘ symbol.

The following versions of software and data (see [references ⓘ](#)) were used in the production of this report:

MolProbity : 4.02b-467
Mogul : 1.7 (RC4), CSD as536be (2015)
Xtriage (Phenix) : 1.9-1692
EDS : rb-20026688
Percentile statistics : 20151230.v01 (using entries in the PDB archive December 30th 2015)
Refmac : 5.8.0135
CCP4 : 6.5.0
Ideal geometry (proteins) : Engh & Huber (2001)
Ideal geometry (DNA, RNA) : Parkinson et al. (1996)
Validation Pipeline (wwPDB-VP) : trunk26865

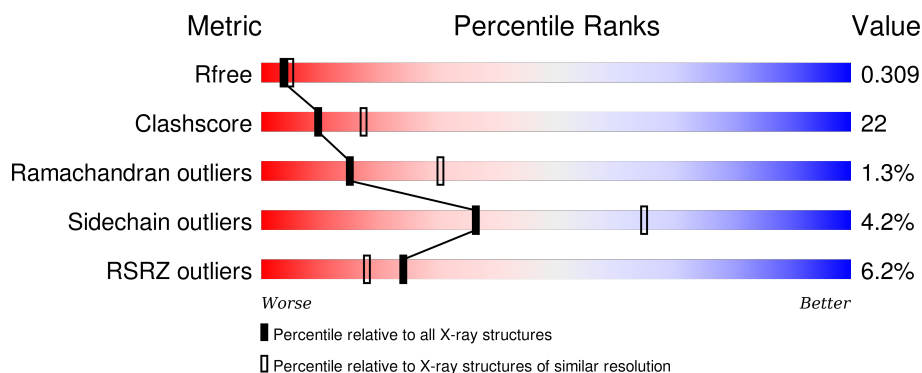
1 Overall quality at a glance

The following experimental techniques were used to determine the structure:

X-RAY DIFFRACTION

The reported resolution of this entry is 2.60 Å.

Percentile scores (ranging between 0-100) for global validation metrics of the entry are shown in the following graphic. The table shows the number of entries on which the scores are based.



Metric	Whole archive (#Entries)	Similar resolution (#Entries, resolution range(Å))
R_{free}	91344	2328 (2.60-2.60)
Clashscore	102246	2679 (2.60-2.60)
Ramachandran outliers	100387	2635 (2.60-2.60)
Sidechain outliers	100360	2635 (2.60-2.60)
RSRZ outliers	91569	2334 (2.60-2.60)

The table below summarises the geometric issues observed across the polymeric chains and their fit to the electron density. The red, orange, yellow and green segments on the lower bar indicate the fraction of residues that contain outliers for ≥ 3 , 2, 1 and 0 types of geometric quality criteria. A grey segment represents the fraction of residues that are not modelled. The numeric value for each fraction is indicated below the corresponding segment, with a dot representing fractions $\leq 5\%$. The upper red bar (where present) indicates the fraction of residues that have poor fit to the electron density. The numeric value is given above the bar.

Mol	Chain	Length	Quality of chain
1	A	456	<div> <div>5%</div> <div>61% 32% • 5%</div> </div>
1	B	456	<div> <div>7%</div> <div>60% 32% • •</div> </div>

The following table lists non-polymeric compounds, carbohydrate monomers and non-standard residues in protein, DNA, RNA chains that are outliers for geometric or electron-density-fit criteria:

Mol	Type	Chain	Res	Chirality	Geometry	Clashes	Electron density
2	GLU	A	500	-	-	-	X
2	GLU	B	500	-	-	X	X

2 Entry composition [i](#)

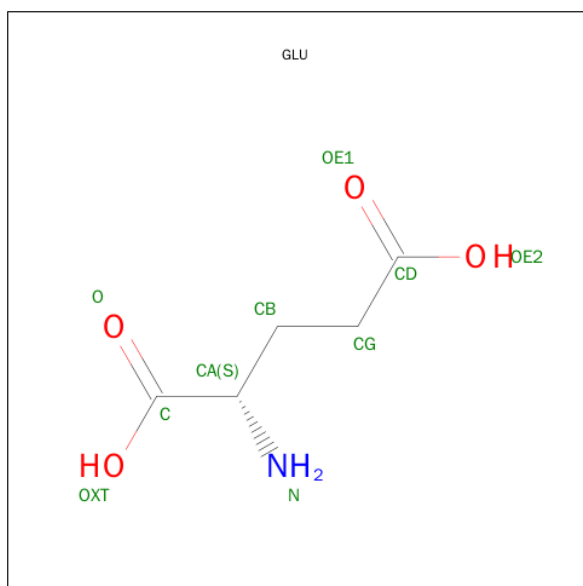
There are 3 unique types of molecules in this entry. The entry contains 6714 atoms, of which 0 are hydrogens and 0 are deuteriums.

In the tables below, the ZeroOcc column contains the number of atoms modelled with zero occupancy, the AltConf column contains the number of residues with at least one atom in alternate conformation and the Trace column contains the number of residues modelled with at most 2 atoms.

- Molecule 1 is a protein called Salt-tolerant glutaminase.

Mol	Chain	Residues	Atoms					ZeroOcc	AltConf	Trace
1	A	435	Total	C	N	O	S	0	0	0
			3238	2015	593	615	15			
1	B	438	Total	C	N	O	S	0	0	0
			3265	2029	599	622	15			

- Molecule 2 is GLUTAMIC ACID (three-letter code: GLU) (formula: C₅H₉NO₄).



Mol	Chain	Residues	Atoms				ZeroOcc	AltConf
2	A	1	Total	C	N	O	0	0
			10	5	1	4		
2	B	1	Total	C	N	O	0	0
			10	5	1	4		

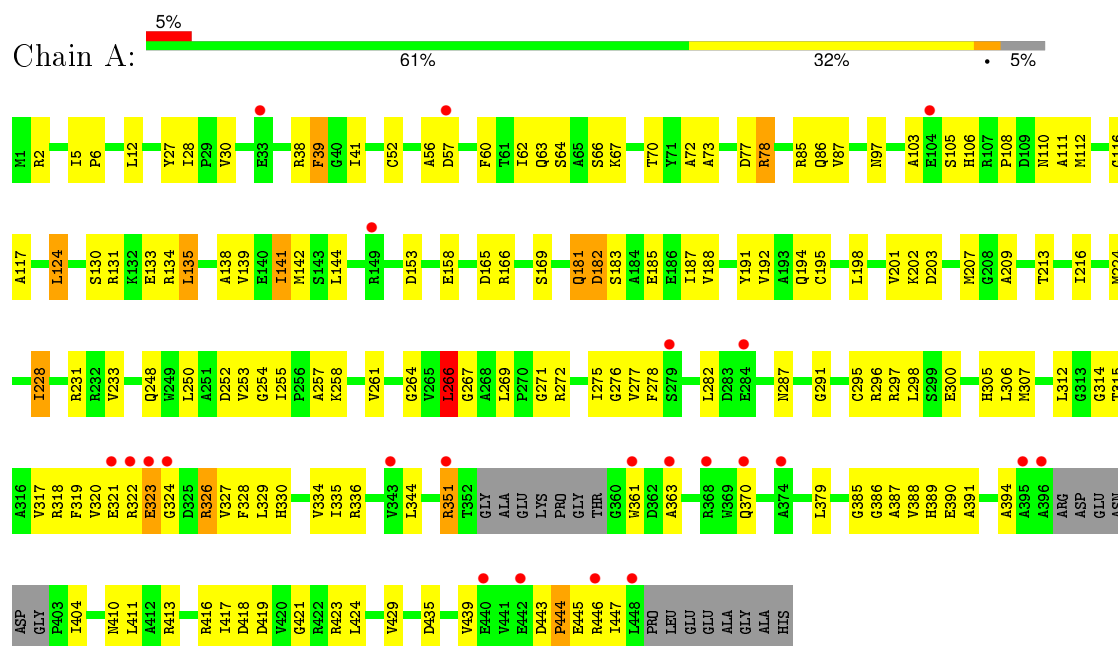
- Molecule 3 is water.

Mol	Chain	Residues	Atoms		ZeroOcc	AltConf
3	A	109	Total 109	O 109	0	0
3	B	82	Total 82	O 82	0	0

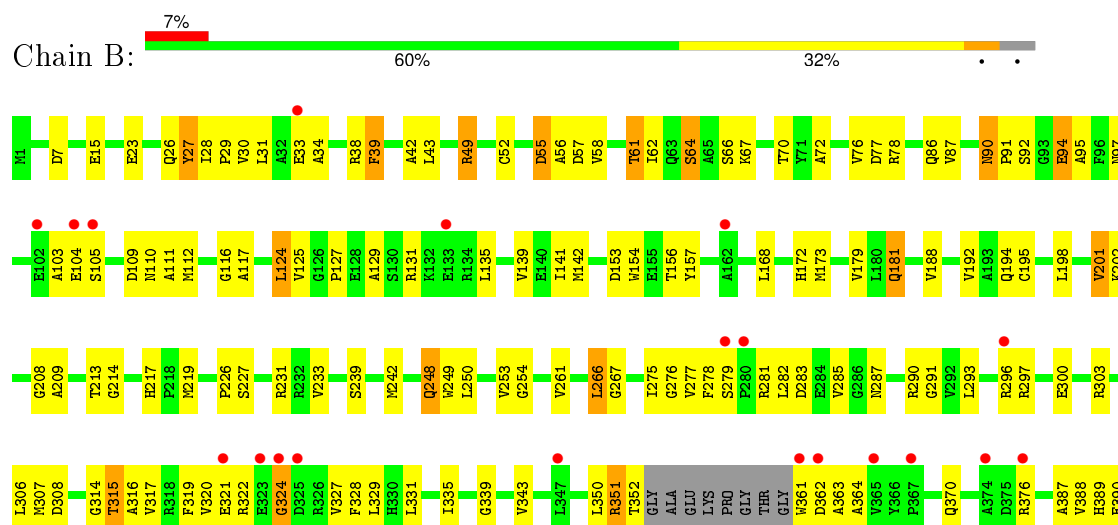
3 Residue-property plots

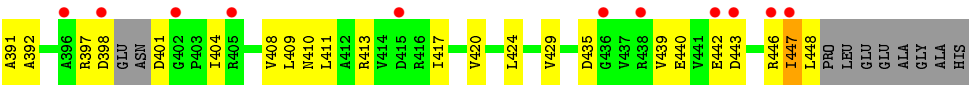
These plots are drawn for all protein, RNA and DNA chains in the entry. The first graphic for a chain summarises the proportions of errors displayed in the second graphic. The second graphic shows the sequence view annotated by issues in geometry and electron density. Residues are color-coded according to the number of geometric quality criteria for which they contain at least one outlier: green = 0, yellow = 1, orange = 2 and red = 3 or more. A red dot above a residue indicates a poor fit to the electron density ($RSRZ > 2$). Stretches of 2 or more consecutive residues without any outlier are shown as a green connector. Residues present in the sample, but not in the model, are shown in grey.

• Molecule 1: Salt-tolerant glutaminase



• Molecule 1: Salt-tolerant glutaminase





4 Data and refinement statistics

Property	Value	Source
Space group	C 1 2 1	Depositor
Cell constants a, b, c, α , β , γ	117.45Å 141.62Å 75.15Å 90.00° 103.95° 90.00°	Depositor
Resolution (Å)	19.92 – 2.60 19.92 – 2.50	Depositor EDS
% Data completeness (in resolution range)	97.9 (19.92-2.60) 98.3 (19.92-2.50)	Depositor EDS
R_{merge}	0.12	Depositor
R_{sym}	0.12	Depositor
$\langle I/\sigma(I) \rangle$ ¹	2.42 (at 2.50Å)	Xtriage
Refinement program	CNS 1.2	Depositor
R, R_{free}	0.271 , 0.309 0.271 , 0.309	Depositor DCC
R_{free} test set	1782 reflections (4.97%)	DCC
Wilson B-factor (Å ²)	49.7	Xtriage
Anisotropy	0.667	Xtriage
Bulk solvent k_{sol} (e/Å ³), B_{sol} (Å ²)	0.32 , 67.3	EDS
Estimated twinning fraction	No twinning to report.	Xtriage
L-test for twinning ²	$\langle L \rangle = 0.51$, $\langle L^2 \rangle = 0.35$	Xtriage
Outliers	0 of 40418 reflections	Xtriage
F_o, F_c correlation	0.93	EDS
Total number of atoms	6714	wwPDB-VP
Average B, all atoms (Å ²)	70.0	wwPDB-VP

Xtriage's analysis on translational NCS is as follows: *The largest off-origin peak in the Patterson function is 10.17% of the height of the origin peak. No significant pseudotranslation is detected.*

¹Intensities estimated from amplitudes.

²Theoretical values of $\langle |L| \rangle$, $\langle L^2 \rangle$ for acentric reflections are 0.5, 0.375 respectively for untwinned datasets, and 0.333, 0.2 for perfectly twinned datasets.

5 Model quality [i](#)

5.1 Standard geometry [i](#)

The Z score for a bond length (or angle) is the number of standard deviations the observed value is removed from the expected value. A bond length (or angle) with $|Z| > 5$ is considered an outlier worth inspection. RMSZ is the root-mean-square of all Z scores of the bond lengths (or angles).

Mol	Chain	Bond lengths		Bond angles	
		RMSZ	$\# Z > 5$	RMSZ	$\# Z > 5$
1	A	0.40	0/3288	0.68	2/4461 (0.0%)
1	B	0.40	0/3315	0.69	1/4498 (0.0%)
All	All	0.40	0/6603	0.68	3/8959 (0.0%)

There are no bond length outliers.

All (3) bond angle outliers are listed below:

Mol	Chain	Res	Type	Atoms	Z	Observed(°)	Ideal(°)
1	A	124	LEU	N-CA-C	5.47	125.77	111.00
1	A	266	LEU	CA-CB-CG	5.28	127.43	115.30
1	B	124	LEU	N-CA-C	5.04	124.60	111.00

There are no chirality outliers.

There are no planarity outliers.

5.2 Too-close contacts [i](#)

In the following table, the Non-H and H(model) columns list the number of non-hydrogen atoms and hydrogen atoms in the chain respectively. The H(added) column lists the number of hydrogen atoms added and optimized by MolProbity. The Clashes column lists the number of clashes within the asymmetric unit, whereas Symm-Clashes lists symmetry related clashes.

Mol	Chain	Non-H	H(model)	H(added)	Clashes	Symm-Clashes
1	A	3238	0	3231	151	0
1	B	3265	0	3251	145	0
2	A	10	0	5	3	0
2	B	10	0	5	4	0
3	A	109	0	0	11	0
3	B	82	0	0	12	0
All	All	6714	0	6492	292	0

The all-atom clashscore is defined as the number of clashes found per 1000 atoms (including hydrogen atoms). The all-atom clashscore for this structure is 22.

All (292) close contacts within the same asymmetric unit are listed below, sorted by their clash magnitude.

Atom-1	Atom-2	Interatomic distance (Å)	Clash overlap (Å)
1:B:376:ARG:HG2	1:B:389:HIS:HB2	1.39	0.99
1:A:231:ARG:HG2	3:A:503:HOH:O	1.72	0.88
1:B:321:GLU:HB2	1:B:328:PHE:HB2	1.58	0.85
1:A:320:VAL:HB	1:A:390:GLU:HB3	1.59	0.84
1:A:62:ILE:HG21	1:A:142:MET:HE1	1.60	0.84
1:A:134:ARG:HD2	3:A:601:HOH:O	1.78	0.82
1:A:323:GLU:HG2	1:A:328:PHE:HE1	1.46	0.80
1:A:67:LYS:HD3	1:A:117:ALA:HB2	1.63	0.80
1:B:135:LEU:O	1:B:139:VAL:HG23	1.82	0.79
1:B:322:ARG:HG2	1:B:397:ARG:HD2	1.66	0.78
1:A:255:ILE:HD11	1:A:295:CYS:HB3	1.65	0.77
1:B:209:ALA:O	1:B:213:THR:HG23	1.86	0.76
1:A:72:ALA:HB2	1:A:233:VAL:HG21	1.68	0.76
1:B:34:ALA:HB1	1:B:38:ARG:HH22	1.49	0.76
1:A:322:ARG:HD3	1:A:327:VAL:HG22	1.66	0.75
1:A:323:GLU:OE1	1:A:324:GLY:N	2.20	0.75
1:B:417:ILE:HD11	1:B:447:ILE:HD11	1.68	0.73
1:A:277:VAL:HG11	1:A:291:GLY:HA2	1.71	0.71
1:B:320:VAL:HB	1:B:390:GLU:HB3	1.72	0.71
1:A:334:VAL:HG13	1:A:416:ARG:HG2	1.71	0.71
1:A:445:GLU:O	1:A:447:ILE:HG13	1.91	0.70
1:A:52:CYS:SG	1:A:202:LYS:HE2	2.30	0.70
1:A:182:ASP:HB2	1:A:187:ILE:HD11	1.74	0.70
1:B:447:ILE:O	1:B:448:LEU:HB2	1.91	0.70
1:A:62:ILE:HD13	1:A:142:MET:HE3	1.74	0.70
1:A:134:ARG:HH11	1:A:134:ARG:HG2	1.56	0.70
1:B:322:ARG:NH2	1:B:404:ILE:HG12	2.07	0.70
1:A:63:GLN:HA	1:A:195:CYS:HB3	1.73	0.69
1:A:411:LEU:HD12	1:A:443:ASP:HB2	1.73	0.69
1:A:320:VAL:HG11	1:A:391:ALA:HA	1.75	0.69
1:B:303:ARG:HD2	1:B:308:ASP:OD1	1.93	0.69
1:A:322:ARG:HG2	1:A:322:ARG:HH21	1.58	0.69
1:B:27:TYR:CD1	1:B:28:ILE:HG23	2.28	0.68
1:B:411:LEU:HD11	1:B:448:LEU:HD12	1.76	0.67
1:B:110:ASN:HD21	1:B:112:MET:HB2	1.59	0.67
1:B:443:ASP:OD1	1:B:447:ILE:HG23	1.96	0.66
1:A:317:VAL:HG21	1:A:388:VAL:HG22	1.76	0.66

Continued on next page...

Continued from previous page...

Atom-1	Atom-2	Interatomic distance (Å)	Clash overlap (Å)
1:A:228:ILE:HD13	3:A:509:HOH:O	1.95	0.66
1:B:49:ARG:HH11	1:B:49:ARG:HB2	1.60	0.65
1:B:64:SER:OG	1:B:67:LYS:HD2	1.95	0.65
1:B:34:ALA:HB1	1:B:38:ARG:NH2	2.11	0.65
1:B:64:SER:HB2	2:B:500:GLU:CD	2.17	0.65
1:A:296:ARG:O	1:A:300:GLU:HG3	1.97	0.65
1:A:135:LEU:O	1:A:139:VAL:HG23	1.97	0.65
1:B:296:ARG:O	1:B:300:GLU:HG3	1.97	0.65
1:B:110:ASN:O	1:B:116:GLY:HA3	1.97	0.64
1:B:277:VAL:HG11	1:B:291:GLY:HA2	1.78	0.64
1:B:201:VAL:HG12	1:B:276:GLY:C	2.17	0.64
1:B:125:VAL:HB	1:B:129:ALA:HB2	1.80	0.64
1:A:327:VAL:HG21	1:A:404:ILE:HD13	1.79	0.63
1:B:125:VAL:HB	1:B:129:ALA:CB	2.28	0.63
1:B:64:SER:HB2	2:B:500:GLU:OE2	1.99	0.63
1:A:153:ASP:HB2	1:A:198:LEU:HD11	1.80	0.63
1:A:103:ALA:HB3	3:A:504:HOH:O	1.98	0.62
1:B:335:ILE:HB	1:B:417:ILE:HG23	1.81	0.62
1:A:41:ILE:HD11	1:A:298:LEU:HD11	1.82	0.62
1:B:408:VAL:HG11	1:B:442:GLU:OE2	2.00	0.62
1:A:63:GLN:OE1	2:A:500:GLU:N	2.33	0.62
1:B:376:ARG:CG	1:B:389:HIS:HB2	2.23	0.61
1:A:135:LEU:HD22	1:A:135:LEU:O	1.99	0.61
1:A:361:TRP:CZ3	1:A:363:ALA:HA	2.35	0.61
1:B:350:LEU:O	1:B:352:THR:N	2.34	0.61
1:A:67:LYS:CD	1:A:117:ALA:HB2	2.31	0.61
1:A:255:ILE:HD11	1:A:295:CYS:CB	2.31	0.60
1:B:322:ARG:HH22	1:B:404:ILE:HG12	1.64	0.60
1:B:62:ILE:HG21	1:B:142:MET:HE1	1.84	0.60
1:B:28:ILE:HD12	1:B:30:VAL:HG12	1.82	0.60
1:B:188:VAL:O	1:B:192:VAL:HG23	2.02	0.59
1:A:305:HIS:HD2	1:A:307:MET:H	1.49	0.59
1:B:92:SER:HA	3:B:514:HOH:O	2.02	0.59
1:B:135:LEU:O	1:B:135:LEU:HD22	2.01	0.59
1:A:5:ILE:HB	1:A:6:PRO:HD3	1.83	0.59
1:A:97:ASN:ND2	1:B:97:ASN:ND2	2.51	0.59
1:A:73:ALA:HB2	1:A:141:ILE:HG13	1.85	0.58
1:A:131:ARG:NH2	3:A:544:HOH:O	2.36	0.58
1:A:334:VAL:HG13	1:A:416:ARG:CG	2.33	0.58
1:B:315:THR:HG22	1:B:315:THR:O	2.02	0.58
1:A:130:SER:OG	1:A:133:GLU:HG3	2.04	0.58

Continued on next page...

Continued from previous page...

Atom-1	Atom-2	Interatomic distance (Å)	Clash overlap (Å)
1:B:339:GLY:O	1:B:343:VAL:HG23	2.03	0.58
1:A:255:ILE:CD1	1:A:295:CYS:HB3	2.33	0.57
1:A:344:LEU:HD21	1:A:424:LEU:O	2.04	0.57
1:A:67:LYS:HD3	1:A:117:ALA:CB	2.32	0.57
1:A:255:ILE:HD11	1:A:295:CYS:SG	2.45	0.57
1:A:188:VAL:O	1:A:192:VAL:HG23	2.03	0.57
1:A:315:THR:O	1:A:315:THR:HG22	2.04	0.57
1:A:254:GLY:O	1:A:306:LEU:HB2	2.04	0.57
1:B:29:PRO:O	1:B:33:GLU:HG2	2.05	0.57
1:B:28:ILE:HD11	1:B:31:LEU:HD12	1.85	0.57
1:B:266:LEU:HD22	1:B:267:GLY:N	2.20	0.56
1:B:287:ASN:HA	3:B:504:HOH:O	2.04	0.56
1:A:320:VAL:HG22	1:A:329:LEU:CD2	2.36	0.56
1:A:344:LEU:HD11	1:A:424:LEU:HD22	1.86	0.56
1:A:363:ALA:HB1	1:A:370:GLN:OE1	2.05	0.55
1:A:27:TYR:HD1	1:A:28:ILE:HG13	1.71	0.55
1:B:168:LEU:HA	1:B:188:VAL:HG21	1.88	0.55
1:A:318:ARG:NE	1:A:413:ARG:HD2	2.22	0.55
1:B:242:MET:HG3	1:B:249:TRP:CG	2.42	0.55
1:B:321:GLU:HA	3:B:510:HOH:O	2.06	0.55
1:A:203:ASP:O	1:A:207:MET:HG3	2.06	0.54
1:B:104:GLU:N	1:B:104:GLU:OE2	2.30	0.54
1:A:248:GLN:HE21	1:A:252:ASP:CG	2.11	0.54
1:B:376:ARG:HD3	1:B:389:HIS:O	2.08	0.54
1:A:56:ALA:HA	1:A:201:VAL:CG2	2.38	0.54
1:A:209:ALA:O	1:A:213:THR:HG23	2.08	0.54
1:B:72:ALA:HB2	1:B:233:VAL:HG21	1.90	0.54
1:A:253:VAL:HG11	1:A:255:ILE:HG12	1.90	0.53
1:B:38:ARG:O	1:B:39:PHE:HB2	2.06	0.53
1:B:317:VAL:O	1:B:387:ALA:HB3	2.08	0.53
1:B:64:SER:C	1:B:66:SER:H	2.10	0.53
1:A:269:LEU:HD11	1:A:306:LEU:HA	1.90	0.53
1:B:314:GLY:C	1:B:316:ALA:H	2.12	0.53
1:A:166:ARG:O	1:A:169:SER:HB3	2.08	0.53
1:B:319:PHE:CE2	1:B:321:GLU:HG3	2.43	0.53
1:A:216:ILE:HD12	1:A:416:ARG:NH2	2.23	0.53
1:B:77:ASP:OD2	1:B:124:LEU:O	2.27	0.53
1:A:110:ASN:O	1:A:116:GLY:HA3	2.08	0.53
1:B:279:SER:OG	1:B:290:ARG:HD3	2.09	0.52
1:B:331:LEU:HD12	1:B:411:LEU:CD2	2.39	0.52
1:B:417:ILE:CD1	1:B:447:ILE:HD11	2.39	0.52

Continued on next page...

Continued from previous page...

Atom-1	Atom-2	Interatomic distance (Å)	Clash overlap (Å)
1:A:64:SER:C	1:A:66:SER:H	2.13	0.52
1:A:2:ARG:HH11	1:A:2:ARG:HB3	1.75	0.52
1:A:255:ILE:HG13	1:A:255:ILE:O	2.09	0.52
1:A:322:ARG:NH2	1:A:322:ARG:HG2	2.22	0.52
1:B:362:ASP:OD1	1:B:364:ALA:N	2.39	0.52
1:B:321:GLU:HG2	3:B:510:HOH:O	2.10	0.52
1:B:39:PHE:HA	1:B:278:PHE:O	2.10	0.52
1:B:429:VAL:HG13	1:B:439:VAL:HG11	1.92	0.52
1:B:320:VAL:HG11	1:B:391:ALA:HA	1.92	0.51
1:B:324:GLY:HA2	1:B:401:ASP:OD2	2.10	0.51
1:A:67:LYS:HE3	1:A:191:TYR:OH	2.11	0.51
1:A:187:ILE:HD12	1:A:187:ILE:N	2.24	0.51
1:B:282:LEU:HA	1:B:287:ASN:O	2.10	0.51
1:B:103:ALA:HB3	1:B:105:SER:HB2	1.91	0.51
1:A:97:ASN:ND2	1:B:97:ASN:HD22	2.08	0.51
1:B:322:ARG:CG	1:B:397:ARG:HD2	2.38	0.51
1:A:27:TYR:CD1	1:A:28:ILE:HG13	2.46	0.51
1:B:103:ALA:C	1:B:105:SER:N	2.61	0.51
1:A:144:LEU:HB3	1:A:224:MET:CE	2.39	0.51
1:A:253:VAL:CG1	1:A:255:ILE:HG12	2.41	0.51
1:A:12:LEU:HD11	1:A:297:ARG:HG3	1.93	0.51
1:B:110:ASN:ND2	1:B:112:MET:HB2	2.25	0.50
1:A:269:LEU:HD12	1:A:306:LEU:HD13	1.92	0.50
1:A:322:ARG:CD	1:A:327:VAL:HG22	2.37	0.50
1:B:410:ASN:HA	1:B:442:GLU:HB2	1.94	0.50
1:A:131:ARG:HD3	3:A:600:HOH:O	2.10	0.50
1:A:253:VAL:HG12	1:A:255:ILE:HG23	1.92	0.50
1:A:39:PHE:HA	1:A:278:PHE:O	2.11	0.50
1:A:275:ILE:HG22	1:A:276:GLY:N	2.26	0.50
1:B:420:VAL:O	1:B:424:LEU:HG	2.12	0.50
1:B:249:TRP:CZ3	1:B:253:VAL:HG21	2.47	0.49
1:A:336:ARG:HA	1:A:418:ASP:OD1	2.12	0.49
1:B:361:TRP:HH2	1:B:370:GLN:HA	1.77	0.49
1:A:134:ARG:HG2	1:A:134:ARG:NH1	2.22	0.49
1:A:86:GLN:O	1:A:108:PRO:HD2	2.12	0.49
1:A:231:ARG:NE	3:A:509:HOH:O	2.45	0.49
1:A:429:VAL:HG13	1:A:439:VAL:HG11	1.95	0.49
1:B:154:TRP:HA	1:B:157:TYR:HB3	1.95	0.49
1:B:275:ILE:HG22	1:B:276:GLY:N	2.27	0.49
1:A:379:LEU:O	1:A:379:LEU:HD13	2.13	0.48
1:B:127:PRO:HG3	3:B:525:HOH:O	2.13	0.48

Continued on next page...

Continued from previous page...

Atom-1	Atom-2	Interatomic distance (Å)	Clash overlap (Å)
1:A:323:GLU:HG2	1:A:328:PHE:CE1	2.36	0.48
1:A:318:ARG:CZ	1:A:413:ARG:HD2	2.43	0.48
1:A:201:VAL:HG12	1:A:276:GLY:C	2.33	0.48
1:B:28:ILE:HD12	1:B:30:VAL:CG1	2.42	0.48
1:B:62:ILE:HD13	1:B:142:MET:HE3	1.95	0.48
1:A:27:TYR:O	1:A:28:ILE:HG13	2.13	0.48
1:A:87:VAL:HG11	1:A:111:ALA:HB2	1.96	0.48
1:B:314:GLY:O	1:B:316:ALA:N	2.46	0.48
1:A:261:VAL:HG13	2:A:500:GLU:CD	2.34	0.48
1:B:293:LEU:HD11	1:B:296:ARG:NH2	2.28	0.47
1:A:417:ILE:HG23	1:A:417:ILE:O	2.14	0.47
1:A:282:LEU:HA	1:A:287:ASN:O	2.14	0.47
1:A:351:ARG:CG	1:A:351:ARG:HH21	2.27	0.47
1:A:183:SER:O	1:A:187:ILE:HD13	2.14	0.47
1:B:283:ASP:OD1	1:B:285:VAL:HG22	2.14	0.47
1:B:55:ASP:HB3	1:B:58:VAL:CG2	2.44	0.47
1:A:322:ARG:HB2	1:A:394:ALA:HB1	1.96	0.47
1:A:28:ILE:HG22	1:A:30:VAL:HG12	1.95	0.47
1:B:52:CYS:SG	1:B:202:LYS:HE2	2.54	0.47
1:A:277:VAL:CG1	1:A:291:GLY:HA2	2.42	0.47
1:B:27:TYR:CE1	1:B:28:ILE:HG23	2.49	0.47
1:B:376:ARG:HD3	1:B:392:ALA:HB3	1.97	0.47
1:B:153:ASP:HB2	1:B:198:LEU:HD11	1.97	0.47
1:B:331:LEU:O	1:B:413:ARG:HB2	2.15	0.47
1:B:408:VAL:HA	1:B:440:GLU:O	2.15	0.46
1:B:42:ALA:O	1:B:43:LEU:HD23	2.15	0.46
1:B:181:GLN:N	1:B:181:GLN:NE2	2.63	0.46
1:A:192:VAL:O	1:A:192:VAL:HG12	2.15	0.46
1:A:138:ALA:O	1:A:141:ILE:HG22	2.15	0.46
1:A:124:LEU:HA	1:A:124:LEU:HD23	1.71	0.46
1:A:70:THR:HG21	1:A:194:GLN:OE1	2.15	0.46
1:B:231:ARG:NE	3:B:501:HOH:O	2.47	0.46
1:B:38:ARG:HD2	1:B:58:VAL:HG11	1.98	0.46
1:A:64:SER:C	1:A:66:SER:N	2.69	0.46
1:A:78:ARG:HB3	1:A:78:ARG:HH11	1.81	0.46
1:A:141:ILE:CG2	1:A:142:MET:N	2.78	0.46
1:B:56:ALA:O	1:B:202:LYS:HG3	2.16	0.46
1:B:231:ARG:HB3	3:B:501:HOH:O	2.16	0.46
1:B:261:VAL:HG13	2:B:500:GLU:HG2	1.98	0.45
1:B:329:LEU:HD23	1:B:409:LEU:CD1	2.46	0.45
1:B:62:ILE:HD13	1:B:142:MET:CE	2.47	0.45

Continued on next page...

Continued from previous page...

Atom-1	Atom-2	Interatomic distance (Å)	Clash overlap (Å)
1:A:27:TYR:C	1:A:28:ILE:HG13	2.36	0.45
1:A:141:ILE:HD13	1:A:141:ILE:O	2.16	0.45
1:A:261:VAL:HG13	2:A:500:GLU:OE2	2.16	0.45
1:A:351:ARG:HA	1:A:351:ARG:HD3	1.57	0.45
1:B:61:THR:HG21	1:B:156:THR:HG21	1.97	0.45
1:A:181:GLN:N	1:A:181:GLN:OE1	2.50	0.45
1:B:86:GLN:HE22	1:B:179:VAL:HA	1.80	0.45
1:B:217:HIS:CE1	1:B:219:MET:HB2	2.52	0.45
1:B:87:VAL:HG11	1:B:111:ALA:HB2	1.98	0.45
1:B:226:PRO:HA	3:B:570:HOH:O	2.16	0.45
1:B:141:ILE:HG23	1:B:142:MET:N	2.33	0.44
1:A:351:ARG:NH2	1:A:351:ARG:CG	2.78	0.44
1:B:91:PRO:HB3	1:B:239:SER:O	2.18	0.44
1:B:322:ARG:O	1:B:397:ARG:NH1	2.50	0.44
1:B:317:VAL:HG21	1:B:388:VAL:HG22	1.98	0.44
1:B:110:ASN:ND2	1:B:112:MET:H	2.16	0.44
1:B:363:ALA:HB1	1:B:370:GLN:OE1	2.18	0.44
1:A:320:VAL:HG22	1:A:329:LEU:HD23	1.99	0.44
1:B:192:VAL:O	1:B:192:VAL:HG12	2.18	0.44
1:A:85:ARG:HB2	3:A:596:HOH:O	2.17	0.44
1:B:131:ARG:HD3	3:B:540:HOH:O	2.17	0.44
1:A:112:MET:HB3	1:A:112:MET:HE2	1.82	0.44
1:B:319:PHE:CD2	1:B:321:GLU:HG3	2.53	0.44
1:A:38:ARG:O	1:A:39:PHE:HB2	2.17	0.44
1:A:330:HIS:HA	1:A:410:ASN:HB3	2.00	0.44
1:A:158:GLU:HA	1:A:158:GLU:OE1	2.18	0.43
1:A:319:PHE:CE2	1:A:321:GLU:HG3	2.53	0.43
1:A:141:ILE:HG23	1:A:142:MET:N	2.32	0.43
1:B:64:SER:C	1:B:66:SER:N	2.71	0.43
1:A:323:GLU:OE1	1:A:324:GLY:CA	2.65	0.43
1:A:257:ALA:HB1	1:A:266:LEU:O	2.18	0.43
1:B:67:LYS:HE2	1:B:117:ALA:HB2	1.99	0.43
1:B:103:ALA:C	1:B:105:SER:H	2.17	0.43
1:A:423:ARG:HD2	3:A:590:HOH:O	2.18	0.43
1:B:94:GLU:O	1:B:95:ALA:C	2.57	0.43
1:A:387:ALA:HA	1:A:389:HIS:CE1	2.54	0.43
1:B:350:LEU:O	1:B:352:THR:HG23	2.19	0.43
1:B:329:LEU:HD23	1:B:409:LEU:HD12	2.01	0.43
1:A:2:ARG:CB	1:A:2:ARG:NH1	2.81	0.43
1:B:248:GLN:HG2	3:B:575:HOH:O	2.19	0.43
1:B:15:GLU:CD	1:B:297:ARG:HH12	2.21	0.43

Continued on next page...

Continued from previous page...

Atom-1	Atom-2	Interatomic distance (Å)	Clash overlap (Å)
1:B:351:ARG:NH1	3:B:577:HOH:O	2.50	0.43
1:A:275:ILE:CG2	1:A:276:GLY:N	2.82	0.43
1:B:446:ARG:O	1:B:447:ILE:C	2.57	0.43
1:A:314:GLY:H	1:A:385:GLY:HA2	1.84	0.43
1:A:231:ARG:NE	3:A:503:HOH:O	2.50	0.42
1:A:305:HIS:CD2	1:A:307:MET:H	2.35	0.42
1:B:275:ILE:CG2	1:B:276:GLY:N	2.82	0.42
1:B:70:THR:HG21	1:B:194:GLN:OE1	2.18	0.42
1:B:90:ASN:O	1:B:109:ASP:HB3	2.20	0.42
1:B:417:ILE:HG13	1:B:447:ILE:HG13	2.01	0.42
1:A:169:SER:OG	1:B:173:MET:HB2	2.19	0.42
1:A:250:LEU:HD22	1:A:250:LEU:O	2.19	0.42
1:B:254:GLY:O	1:B:306:LEU:HB2	2.19	0.42
1:A:443:ASP:HA	1:A:444:PRO:HD2	1.74	0.42
1:A:201:VAL:HG22	1:A:278:PHE:HB2	2.01	0.42
1:A:60:PHE:CE1	1:A:264:GLY:HA3	2.55	0.42
1:B:411:LEU:CD1	1:B:448:LEU:HD12	2.49	0.42
1:A:201:VAL:HG22	1:A:278:PHE:CB	2.49	0.42
1:B:316:ALA:O	1:B:331:LEU:HA	2.20	0.42
1:A:361:TRP:HH2	1:A:370:GLN:CA	2.32	0.42
1:B:398:ASP:O	1:B:401:ASP:O	2.37	0.42
1:B:26:GLN:NE2	3:B:550:HOH:O	2.53	0.42
1:B:55:ASP:HB3	1:B:58:VAL:HG21	2.01	0.42
1:A:417:ILE:HD11	1:A:421:GLY:C	2.40	0.42
1:B:352:THR:O	1:B:435:ASP:CG	2.58	0.42
1:A:312:LEU:O	1:A:315:THR:HB	2.20	0.41
1:A:105:SER:O	1:A:106:HIS:HB2	2.20	0.41
1:B:214:GLY:O	1:B:227:SER:HA	2.19	0.41
1:A:231:ARG:HB3	3:A:509:HOH:O	2.19	0.41
1:A:78:ARG:HB3	1:A:78:ARG:NH1	2.34	0.41
1:A:266:LEU:HD22	1:A:267:GLY:N	2.36	0.41
1:A:62:ILE:HD13	1:A:142:MET:CE	2.46	0.41
1:A:335:ILE:O	1:A:417:ILE:HG13	2.20	0.41
1:A:327:VAL:HG23	1:A:404:ILE:HG23	2.03	0.41
1:B:72:ALA:O	1:B:76:VAL:HG23	2.21	0.41
1:A:77:ASP:OD2	1:A:124:LEU:O	2.38	0.41
1:B:208:GLY:CA	1:B:266:LEU:HD21	2.51	0.41
1:B:327:VAL:HG21	1:B:404:ILE:HD13	2.03	0.41
1:A:112:MET:HE2	1:A:258:LYS:HD3	2.03	0.41
1:A:271:GLY:C	1:A:272:ARG:HG3	2.40	0.41
1:B:314:GLY:C	1:B:316:ALA:N	2.72	0.41

Continued on next page...

Continued from previous page...

Atom-1	Atom-2	Interatomic distance (Å)	Clash overlap (Å)
1:B:315:THR:O	1:B:315:THR:CG2	2.67	0.41
1:A:326:ARG:HD3	1:A:328:PHE:CZ	2.56	0.40
1:A:255:ILE:CG1	1:A:255:ILE:O	2.69	0.40
1:B:195:CYS:HG	2:B:500:GLU:N	2.18	0.40
1:A:165:ASP:O	1:B:172:HIS:HB3	2.21	0.40
1:B:124:LEU:HA	1:B:124:LEU:HD23	1.69	0.40
1:B:23:GLU:HA	1:B:281:ARG:HG2	2.03	0.40
1:B:448:LEU:HD23	1:B:448:LEU:HA	1.95	0.40
1:A:296:ARG:HH11	1:A:296:ARG:HB2	1.87	0.40

There are no symmetry-related clashes.

5.3 Torsion angles [i](#)

5.3.1 Protein backbone [i](#)

In the following table, the Percentiles column shows the percent Ramachandran outliers of the chain as a percentile score with respect to all X-ray entries followed by that with respect to entries of similar resolution.

The Analysed column shows the number of residues for which the backbone conformation was analysed, and the total number of residues.

Mol	Chain	Analysed	Favoured	Allowed	Outliers	Percentiles	
1	A	429/456 (94%)	379 (88%)	45 (10%)	5 (1%)	16	33
1	B	432/456 (95%)	398 (92%)	28 (6%)	6 (1%)	14	28
All	All	861/912 (94%)	777 (90%)	73 (8%)	11 (1%)	15	30

All (11) Ramachandran outliers are listed below:

Mol	Chain	Res	Type
1	B	351	ARG
1	A	182	ASP
1	A	386	GLY
1	A	446	ARG
1	B	39	PHE
1	B	55	ASP
1	B	315	THR
1	B	447	ILE
1	A	39	PHE

Continued on next page...

Continued from previous page...

Mol	Chain	Res	Type
1	B	324	GLY
1	A	444	PRO

5.3.2 Protein sidechains ⓘ

In the following table, the Percentiles column shows the percent sidechain outliers of the chain as a percentile score with respect to all X-ray entries followed by that with respect to entries of similar resolution.

The Analysed column shows the number of residues for which the sidechain conformation was analysed, and the total number of residues.

Mol	Chain	Analysed	Rotameric	Outliers	Percentiles	
1	A	327/341 (96%)	314 (96%)	13 (4%)	38	67
1	B	330/341 (97%)	315 (96%)	15 (4%)	34	62
All	All	657/682 (96%)	629 (96%)	28 (4%)	36	64

All (28) residues with a non-rotameric sidechain are listed below:

Mol	Chain	Res	Type
1	A	57	ASP
1	A	78	ARG
1	A	135	LEU
1	A	141	ILE
1	A	181	GLN
1	A	185	GLU
1	A	228	ILE
1	A	266	LEU
1	A	323	GLU
1	A	326	ARG
1	A	351	ARG
1	A	419	ASP
1	A	435	ASP
1	B	7	ASP
1	B	27	TYR
1	B	49	ARG
1	B	57	ASP
1	B	61	THR
1	B	64	SER
1	B	78	ARG
1	B	90	ASN

Continued on next page...

Continued from previous page...

Mol	Chain	Res	Type
1	B	94	GLU
1	B	181	GLN
1	B	201	VAL
1	B	248	GLN
1	B	250	LEU
1	B	266	LEU
1	B	307	MET

Some sidechains can be flipped to improve hydrogen bonding and reduce clashes. All (11) such sidechains are listed below:

Mol	Chain	Res	Type
1	A	26	GLN
1	A	86	GLN
1	A	110	ASN
1	A	121	HIS
1	A	248	GLN
1	A	305	HIS
1	B	86	GLN
1	B	110	ASN
1	B	121	HIS
1	B	181	GLN
1	B	248	GLN

5.3.3 RNA [i](#)

There are no RNA molecules in this entry.

5.4 Non-standard residues in protein, DNA, RNA chains [i](#)

There are no non-standard protein/DNA/RNA residues in this entry.

5.5 Carbohydrates [i](#)

There are no carbohydrates in this entry.

5.6 Ligand geometry [i](#)

2 ligands are modelled in this entry.

In the following table, the Counts columns list the number of bonds (or angles) for which Mogul statistics could be retrieved, the number of bonds (or angles) that are observed in the model and the number of bonds (or angles) that are defined in the chemical component dictionary. The Link column lists molecule types, if any, to which the group is linked. The Z score for a bond length (or angle) is the number of standard deviations the observed value is removed from the expected value. A bond length (or angle) with $|Z| > 2$ is considered an outlier worth inspection. RMSZ is the root-mean-square of all Z scores of the bond lengths (or angles).

Mol	Type	Chain	Res	Link	Bond lengths			Bond angles		
					Counts	RMSZ	$\# Z > 2$	Counts	RMSZ	$\# Z > 2$
2	GLU	A	500	-	3,9,9	0.19	0	2,11,11	0.13	0
2	GLU	B	500	-	3,9,9	0.10	0	2,11,11	0.20	0

In the following table, the Chirals column lists the number of chiral outliers, the number of chiral centers analysed, the number of these observed in the model and the number defined in the chemical component dictionary. Similar counts are reported in the Torsion and Rings columns. '-' means no outliers of that kind were identified.

Mol	Type	Chain	Res	Link	Chirals	Torsions	Rings
2	GLU	A	500	-	-	0/3/9/9	0/0/0/0
2	GLU	B	500	-	-	0/3/9/9	0/0/0/0

There are no bond length outliers.

There are no bond angle outliers.

There are no chirality outliers.

There are no torsion outliers.

There are no ring outliers.

2 monomers are involved in 7 short contacts:

Mol	Chain	Res	Type	Clashes	Symm-Clashes
2	A	500	GLU	3	0
2	B	500	GLU	4	0

5.7 Other polymers [i](#)

There are no such residues in this entry.

5.8 Polymer linkage issues [i](#)

There are no chain breaks in this entry.

6 Fit of model and data ⓘ

6.1 Protein, DNA and RNA chains ⓘ

In the following table, the column labelled ‘#RSRZ> 2’ contains the number (and percentage) of RSRZ outliers, followed by percent RSRZ outliers for the chain as percentile scores relative to all X-ray entries and entries of similar resolution. The OWAB column contains the minimum, median, 95th percentile and maximum values of the occupancy-weighted average B-factor per residue. The column labelled ‘Q< 0.9’ lists the number of (and percentage) of residues with an average occupancy less than 0.9.

Mol	Chain	Analysed	<RSRZ>	#RSRZ>2	OWAB(Å ²)	Q<0.9
1	A	435/456 (95%)	0.33	23 (5%) 30 23	24, 66, 105, 121	0
1	B	438/456 (96%)	0.41	31 (7%) 19 13	25, 66, 110, 148	0
All	All	873/912 (95%)	0.37	54 (6%) 24 18	24, 66, 107, 148	0

All (54) RSRZ outliers are listed below:

Mol	Chain	Res	Type	RSRZ
1	B	398	ASP	6.5
1	B	446	ARG	4.9
1	B	102	GLU	4.7
1	A	374	ALA	4.5
1	A	446	ARG	4.4
1	A	323	GLU	4.0
1	B	442	GLU	3.6
1	B	104	GLU	3.6
1	B	447	ILE	3.6
1	B	436	GLY	3.6
1	A	363	ALA	3.5
1	B	374	ALA	3.5
1	A	368	ARG	3.5
1	B	105	SER	3.4
1	B	323	GLU	3.4
1	B	324	GLY	3.4
1	A	321	GLU	3.3
1	B	396	ALA	3.2
1	A	448	LEU	3.1
1	B	162	ALA	3.1
1	A	396	ALA	3.0
1	A	442	GLU	3.0
1	A	284	GLU	2.9
1	B	133	GLU	2.9

Continued on next page...

Continued from previous page...

Mol	Chain	Res	Type	RSRZ
1	A	149	ARG	2.8
1	A	104	GLU	2.7
1	B	361	TRP	2.7
1	B	279	SER	2.7
1	B	325	ASP	2.6
1	A	361	TRP	2.6
1	B	443	ASP	2.5
1	A	324	GLY	2.5
1	A	351	ARG	2.5
1	B	438	ARG	2.4
1	A	343	VAL	2.4
1	B	402	GLY	2.4
1	B	376	ARG	2.4
1	A	440	GLU	2.3
1	B	367	PRO	2.3
1	B	365	VAL	2.3
1	B	321	GLU	2.3
1	A	395	ALA	2.3
1	A	279	SER	2.2
1	A	370	GLN	2.2
1	B	33	GLU	2.2
1	B	347	LEU	2.1
1	A	33	GLU	2.1
1	B	280	PRO	2.1
1	B	405	ARG	2.1
1	B	415	ASP	2.1
1	A	322	ARG	2.0
1	B	296	ARG	2.0
1	B	362	ASP	2.0
1	A	57	ASP	2.0

6.2 Non-standard residues in protein, DNA, RNA chains ⓘ

There are no non-standard protein/DNA/RNA residues in this entry.

6.3 Carbohydrates ⓘ

There are no carbohydrates in this entry.

6.4 Ligands [i](#)

In the following table, the Atoms column lists the number of modelled atoms in the group and the number defined in the chemical component dictionary. LLDF column lists the quality of electron density of the group with respect to its neighbouring residues in protein, DNA or RNA chains. The B-factors column lists the minimum, median, 95th percentile and maximum values of B factors of atoms in the group. The column labelled 'Q< 0.9' lists the number of atoms with occupancy less than 0.9.

Mol	Type	Chain	Res	Atoms	RSCC	RSR	LLDF	B-factors(Å ²)	Q<0.9
2	GLU	B	500	10/10	0.78	0.28	3.30	88,93,96,99	0
2	GLU	A	500	10/10	0.89	0.28	2.77	101,104,106,106	0

6.5 Other polymers [i](#)

There are no such residues in this entry.