



# Full wwPDB X-ray Structure Validation Report ⓘ

Jan 31, 2016 – 08:04 PM GMT

PDB ID : 1IMX  
Title : 1.8 Angstrom crystal structure of IGF-1  
Authors : Vajdos, F.F.; Ultsch, M.; Schaffer, M.L.; Deshayes, K.D.; Liu, J.; Skelton, N.J.; de Vos, A.M.  
Deposited on : 2001-05-11  
Resolution : 1.82 Å(reported)

This is a Full wwPDB X-ray Structure Validation Report for a publicly released PDB entry.  
We welcome your comments at [validation@mail.wwpdb.org](mailto:validation@mail.wwpdb.org)  
A user guide is available at  
<http://wwpdb.org/validation/2016/XrayValidationReportHelp>  
with specific help available everywhere you see the ⓘ symbol.

---

The following versions of software and data (see [references ⓘ](#)) were used in the production of this report:

MolProbity : 4.02b-467  
Mogul : 1.7 (RC4), CSD as536be (2015)  
Xtriage (Phenix) : 1.9-1692  
EDS : rb-20026688  
Percentile statistics : 20151230.v01 (using entries in the PDB archive December 30th 2015)  
Refmac : 5.8.0135  
CCP4 : 6.5.0  
Ideal geometry (proteins) : Engh & Huber (2001)  
Ideal geometry (DNA, RNA) : Parkinson et al. (1996)  
Validation Pipeline (wwPDB-VP) : trunk26865

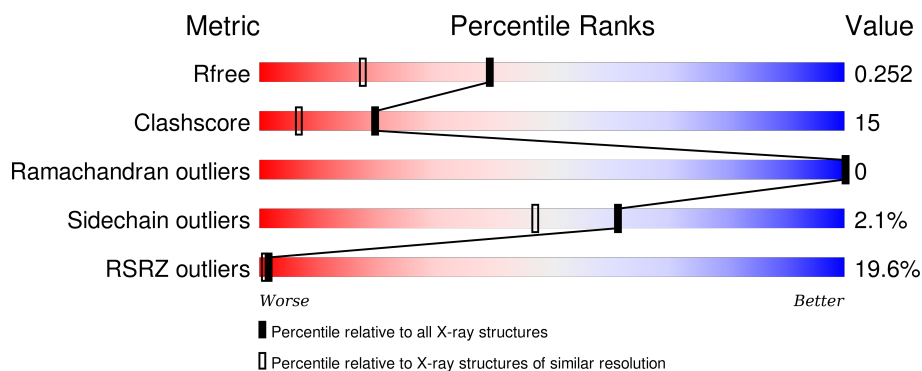
# 1 Overall quality at a glance

The following experimental techniques were used to determine the structure:

## *X-RAY DIFFRACTION*

The reported resolution of this entry is 1.82 Å.

Percentile scores (ranging between 0-100) for global validation metrics of the entry are shown in the following graphic. The table shows the number of entries on which the scores are based.



Metric	Whole archive (#Entries)	Similar resolution (#Entries, resolution range(Å))
$R_{free}$	91344	5422 (1.84-1.80)
Clashscore	102246	6347 (1.84-1.80)
Ramachandran outliers	100387	6276 (1.84-1.80)
Sidechain outliers	100360	6276 (1.84-1.80)
RSRZ outliers	91569	5439 (1.84-1.80)

The table below summarises the geometric issues observed across the polymeric chains and their fit to the electron density. The red, orange, yellow and green segments on the lower bar indicate the fraction of residues that contain outliers for  $\geq 3$ , 2, 1 and 0 types of geometric quality criteria. A grey segment represents the fraction of residues that are not modelled. The numeric value for each fraction is indicated below the corresponding segment, with a dot representing fractions  $\leq 5\%$ . The upper red bar (where present) indicates the fraction of residues that have poor fit to the electron density. The numeric value is given above the bar.

Mol	Chain	Length	Quality of chain
1	A	70	

The following table lists non-polymeric compounds, carbohydrate monomers and non-standard residues in protein, DNA, RNA chains that are outliers for geometric or electron-density-fit criteria:

Mol	Type	Chain	Res	Chirality	Geometry	Clashes	Electron density
3	CPQ	A	101	-	-	-	X

## 2 Entry composition [i](#)

There are 4 unique types of molecules in this entry. The entry contains 539 atoms, of which 0 are hydrogens and 0 are deuteriums.

In the tables below, the ZeroOcc column contains the number of atoms modelled with zero occupancy, the AltConf column contains the number of residues with at least one atom in alternate conformation and the Trace column contains the number of residues modelled with at most 2 atoms.

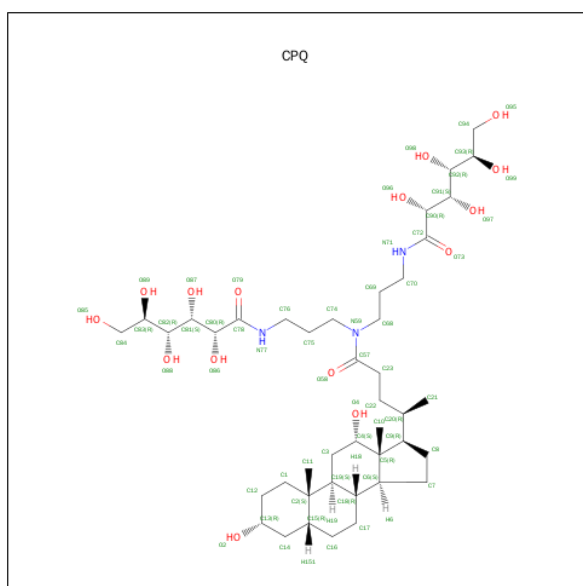
- Molecule 1 is a protein called Insulin-like Growth Factor 1A.

Mol	Chain	Residues	Atoms					ZeroOcc	AltConf	Trace
1	A	56	Total	C	N	O	S	0	0	0
			431	270	71	83	7			

- Molecule 2 is BROMIDE ION (three-letter code: BR) (formula: Br).

Mol	Chain	Residues	Atoms		ZeroOcc	AltConf
2	A	1	Total	Br	0	0
			1	1		

- Molecule 3 is N,N-BIS(3-D-GLUCONAMIDOPROPYL)DEOXYCHOLAMIDE (three-letter code: CPQ) (formula: C<sub>42</sub>H<sub>75</sub>N<sub>3</sub>O<sub>15</sub>).



Mol	Chain	Residues	Atoms				ZeroOcc	AltConf
3	A	1	Total	C	N	O	14	0
			60	42	3	15		

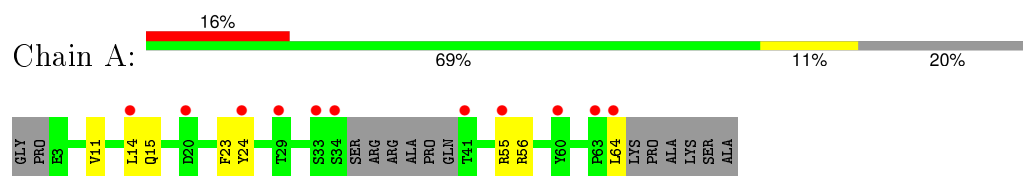
- Molecule 4 is water.

Mol	Chain	Residues	Atoms		ZeroOcc	AltConf
4	A	47	Total	O	0	0
			47	47		

### 3 Residue-property plots

These plots are drawn for all protein, RNA and DNA chains in the entry. The first graphic for a chain summarises the proportions of errors displayed in the second graphic. The second graphic shows the sequence view annotated by issues in geometry and electron density. Residues are color-coded according to the number of geometric quality criteria for which they contain at least one outlier: green = 0, yellow = 1, orange = 2 and red = 3 or more. A red dot above a residue indicates a poor fit to the electron density ( $\text{RSRZ} > 2$ ). Stretches of 2 or more consecutive residues without any outlier are shown as a green connector. Residues present in the sample, but not in the model, are shown in grey.

- Molecule 1: Insulin-like Growth Factor 1A



## 4 Data and refinement statistics

Property	Value	Source
Space group	C 2 2 21	Depositor
Cell constants a, b, c, $\alpha$ , $\beta$ , $\gamma$	31.83Å 71.06Å 66.00Å 90.00° 90.00° 90.00°	Depositor
Resolution (Å)	19.00 – 1.82 19.00 – 1.82	Depositor EDS
% Data completeness (in resolution range)	97.9 (19.00-1.82) 98.0 (19.00-1.82)	Depositor EDS
$R_{merge}$	0.04	Depositor
$R_{sym}$	(Not available)	Depositor
$\langle I/\sigma(I) \rangle$ <sup>1</sup>	4.39 (at 1.82Å)	Xtriage
Refinement program	CNX 2000	Depositor
R, $R_{free}$	0.245 , 0.258 0.239 , 0.252	Depositor DCC
$R_{free}$ test set	566 reflections (8.98%)	DCC
Wilson B-factor (Å <sup>2</sup> )	27.4	Xtriage
Anisotropy	0.285	Xtriage
Bulk solvent $k_{sol}$ (e/Å <sup>3</sup> ), $B_{sol}$ (Å <sup>2</sup> )	0.38 , 54.2	EDS
Estimated twinning fraction	No twinning to report.	Xtriage
L-test for twinning <sup>2</sup>	$\langle  L  \rangle = 0.48$ , $\langle L^2 \rangle = 0.32$	Xtriage
Outliers	0 of 6871 reflections	Xtriage
$F_o, F_c$ correlation	0.93	EDS
Total number of atoms	539	wwPDB-VP
Average B, all atoms (Å <sup>2</sup> )	33.0	wwPDB-VP

Xtriage's analysis on translational NCS is as follows: *The largest off-origin peak in the Patterson function is 9.90% of the height of the origin peak. No significant pseudotranslation is detected.*

<sup>1</sup>Intensities estimated from amplitudes.

<sup>2</sup>Theoretical values of  $\langle |L| \rangle$ ,  $\langle L^2 \rangle$  for acentric reflections are 0.5, 0.375 respectively for untwinned datasets, and 0.333, 0.2 for perfectly twinned datasets.

## 5 Model quality

### 5.1 Standard geometry

Bond lengths and bond angles in the following residue types are not validated in this section: CPQ, BR

The Z score for a bond length (or angle) is the number of standard deviations the observed value is removed from the expected value. A bond length (or angle) with  $|Z| > 5$  is considered an outlier worth inspection. RMSZ is the root-mean-square of all Z scores of the bond lengths (or angles).

Mol	Chain	Bond lengths		Bond angles	
		RMSZ	$\# Z  > 5$	RMSZ	$\# Z  > 5$
1	A	0.34	0/438	0.55	0/588

There are no bond length outliers.

There are no bond angle outliers.

There are no chirality outliers.

There are no planarity outliers.

### 5.2 Too-close contacts

In the following table, the Non-H and H(model) columns list the number of non-hydrogen atoms and hydrogen atoms in the chain respectively. The H(added) column lists the number of hydrogen atoms added and optimized by MolProbity. The Clashes column lists the number of clashes within the asymmetric unit, whereas Symm-Clashes lists symmetry related clashes.

Mol	Chain	Non-H	H(model)	H(added)	Clashes	Symm-Clashes
1	A	431	0	400	6	0
2	A	1	0	0	0	0
3	A	60	0	75	8	0
4	A	47	0	0	1	0
All	All	539	0	475	14	0

The all-atom clashscore is defined as the number of clashes found per 1000 atoms (including hydrogen atoms). The all-atom clashscore for this structure is 15.

All (14) close contacts within the same asymmetric unit are listed below, sorted by their clash magnitude.

Atom-1	Atom-2	Interatomic distance (Å)	Clash overlap (Å)
3:A:101:CPQ:C2	3:A:101:CPQ:C11	1.75	1.61
3:A:101:CPQ:C5	3:A:101:CPQ:C10	1.75	1.57
3:A:101:CPQ:C4	3:A:101:CPQ:C10	2.64	0.76
3:A:101:CPQ:C1	3:A:101:CPQ:C11	2.70	0.66
3:A:101:CPQ:C11	3:A:101:CPQ:C19	2.73	0.65
3:A:101:CPQ:C9	3:A:101:CPQ:C10	2.74	0.62
3:A:101:CPQ:C6	3:A:101:CPQ:C10	2.81	0.53
1:A:64:LEU:HD12	1:A:64:LEU:N	2.25	0.52
1:A:64:LEU:HD12	1:A:64:LEU:H	1.75	0.51
1:A:11:VAL:O	1:A:15:GLN:HG3	2.11	0.50
3:A:101:CPQ:C15	3:A:101:CPQ:C11	2.81	0.49
1:A:56:ARG:HG3	4:A:209:HOH:O	2.19	0.41
1:A:55:ARG:HG2	1:A:56:ARG:N	2.36	0.40
1:A:14:LEU:HD13	1:A:23:PHE:CD2	2.56	0.40

There are no symmetry-related clashes.

## 5.3 Torsion angles [i](#)

### 5.3.1 Protein backbone [i](#)

In the following table, the Percentiles column shows the percent Ramachandran outliers of the chain as a percentile score with respect to all X-ray entries followed by that with respect to entries of similar resolution.

The Analysed column shows the number of residues for which the backbone conformation was analysed, and the total number of residues.

Mol	Chain	Analysed	Favoured	Allowed	Outliers	Percentiles	
1	A	52/70 (74%)	52 (100%)	0	0	100	100

There are no Ramachandran outliers to report.

### 5.3.2 Protein sidechains [i](#)

In the following table, the Percentiles column shows the percent sidechain outliers of the chain as a percentile score with respect to all X-ray entries followed by that with respect to entries of similar resolution.

The Analysed column shows the number of residues for which the sidechain conformation was analysed, and the total number of residues.

Mol	Chain	Analysed	Rotameric	Outliers	Percentiles
1	A	47/57 (82%)	46 (98%)	1 (2%)	61 47

All (1) residues with a non-rotameric sidechain are listed below:

Mol	Chain	Res	Type
1	A	24	TYR

Some sidechains can be flipped to improve hydrogen bonding and reduce clashes. All (1) such sidechains are listed below:

Mol	Chain	Res	Type
1	A	15	GLN

### 5.3.3 RNA ⓘ

There are no RNA molecules in this entry.

## 5.4 Non-standard residues in protein, DNA, RNA chains ⓘ

There are no non-standard protein/DNA/RNA residues in this entry.

## 5.5 Carbohydrates ⓘ

There are no carbohydrates in this entry.

## 5.6 Ligand geometry ⓘ

Of 2 ligands modelled in this entry, 1 is monoatomic - leaving 1 for Mogul analysis.

In the following table, the Counts columns list the number of bonds (or angles) for which Mogul statistics could be retrieved, the number of bonds (or angles) that are observed in the model and the number of bonds (or angles) that are defined in the chemical component dictionary. The Link column lists molecule types, if any, to which the group is linked. The Z score for a bond length (or angle) is the number of standard deviations the observed value is removed from the expected value. A bond length (or angle) with  $|Z| > 2$  is considered an outlier worth inspection. RMSZ is the root-mean-square of all Z scores of the bond lengths (or angles).

Mol	Type	Chain	Res	Link	Bond lengths			Bond angles		
					Counts	RMSZ	$\# Z  > 2$	Counts	RMSZ	$\# Z  > 2$
3	CPQ	A	101	-	63,63,63	3.78	35 (55%)	92,92,92	2.07	26 (28%)

In the following table, the Chirals column lists the number of chiral outliers, the number of chiral centers analysed, the number of these observed in the model and the number defined in the chemical component dictionary. Similar counts are reported in the Torsion and Rings columns. '-' means no outliers of that kind were identified.

Mol	Type	Chain	Res	Link	Chirals	Torsions	Rings
3	CPQ	A	101	-	-	0/63/125/125	0/4/4/4

All (35) bond length outliers are listed below:

Mol	Chain	Res	Type	Atoms	Z	Observed(Å)	Ideal(Å)
3	A	101	CPQ	C3-C4	-4.45	1.45	1.53
3	A	101	CPQ	O58-C57	-2.41	1.17	1.23
3	A	101	CPQ	O98-C92	2.04	1.47	1.43
3	A	101	CPQ	C12-C13	2.26	1.57	1.51
3	A	101	CPQ	O89-C83	2.53	1.49	1.43
3	A	101	CPQ	C14-C13	2.53	1.56	1.51
3	A	101	CPQ	C23-C57	2.55	1.57	1.51
3	A	101	CPQ	O88-C82	2.55	1.49	1.43
3	A	101	CPQ	C94-C93	2.62	1.59	1.52
3	A	101	CPQ	O97-C91	2.73	1.49	1.43
3	A	101	CPQ	C1-C2	2.86	1.59	1.54
3	A	101	CPQ	O86-C80	3.08	1.48	1.42
3	A	101	CPQ	C84-C83	3.08	1.61	1.52
3	A	101	CPQ	C83-C82	3.25	1.60	1.53
3	A	101	CPQ	O87-C81	3.28	1.50	1.43
3	A	101	CPQ	C74-N59	3.42	1.57	1.47
3	A	101	CPQ	C75-C74	3.67	1.67	1.51
3	A	101	CPQ	C93-C92	3.82	1.61	1.53
3	A	101	CPQ	C22-C20	4.02	1.65	1.54
3	A	101	CPQ	C91-C90	4.07	1.63	1.53
3	A	101	CPQ	C78-N77	4.15	1.42	1.33
3	A	101	CPQ	C5-C4	4.22	1.61	1.54
3	A	101	CPQ	C5-C6	4.34	1.63	1.55
3	A	101	CPQ	C2-C15	4.60	1.63	1.55
3	A	101	CPQ	C82-C81	4.64	1.62	1.53
3	A	101	CPQ	O4-C4	4.71	1.51	1.43
3	A	101	CPQ	C81-C80	5.02	1.65	1.53
3	A	101	CPQ	C17-C18	5.54	1.63	1.53
3	A	101	CPQ	C92-C91	5.80	1.65	1.53
3	A	101	CPQ	C8-C9	5.84	1.67	1.54
3	A	101	CPQ	C2-C19	6.09	1.68	1.56
3	A	101	CPQ	C3-C19	6.41	1.64	1.53
3	A	101	CPQ	C21-C20	6.86	1.70	1.53
3	A	101	CPQ	C11-C2	11.09	1.75	1.54

*Continued on next page...*

*Continued from previous page...*

Mol	Chain	Res	Type	Atoms	Z	Observed(Å)	Ideal(Å)
3	A	101	CPQ	C10-C5	13.06	1.75	1.54

All (26) bond angle outliers are listed below:

Mol	Chain	Res	Type	Atoms	Z	Observed(°)	Ideal(°)
3	A	101	CPQ	C10-C5-C4	-5.51	103.72	109.09
3	A	101	CPQ	C9-C5-C6	-4.35	95.66	100.05
3	A	101	CPQ	O58-C57-C23	-4.19	113.34	121.40
3	A	101	CPQ	C11-C2-C19	-3.62	105.76	111.18
3	A	101	CPQ	C75-C76-N77	-3.13	103.02	112.19
3	A	101	CPQ	C5-C6-C18	-2.67	111.68	114.74
3	A	101	CPQ	C2-C19-C18	-2.65	109.44	112.40
3	A	101	CPQ	C14-C15-C2	-2.55	109.84	112.66
3	A	101	CPQ	C8-C9-C20	-2.51	107.57	112.05
3	A	101	CPQ	O99-C93-C94	-2.50	103.39	109.22
3	A	101	CPQ	C93-C92-C91	-2.46	108.46	112.47
3	A	101	CPQ	O58-C57-N59	-2.22	117.31	122.08
3	A	101	CPQ	C19-C3-C4	-2.19	111.59	114.36
3	A	101	CPQ	C3-C19-C2	-2.09	111.62	113.79
3	A	101	CPQ	C82-C81-C80	-2.04	110.06	113.66
3	A	101	CPQ	C3-C4-C5	2.06	113.29	111.20
3	A	101	CPQ	O86-C80-C81	2.25	115.11	110.41
3	A	101	CPQ	O96-C90-C91	2.36	115.34	110.41
3	A	101	CPQ	C94-C93-C92	2.38	118.05	112.48
3	A	101	CPQ	C23-C22-C20	3.13	120.14	114.48
3	A	101	CPQ	C7-C6-C5	3.20	106.78	103.60
3	A	101	CPQ	C68-N59-C57	3.30	130.77	120.77
3	A	101	CPQ	O87-C81-C80	3.49	115.59	109.28
3	A	101	CPQ	C22-C23-C57	4.08	125.40	112.54
3	A	101	CPQ	C9-C5-C4	6.02	123.02	117.68
3	A	101	CPQ	C23-C57-N59	7.91	129.36	117.94

There are no chirality outliers.

There are no torsion outliers.

There are no ring outliers.

1 monomer is involved in 8 short contacts:

Mol	Chain	Res	Type	Clashes	Symm-Clashes
3	A	101	CPQ	8	0

## 5.7 Other polymers

There are no such residues in this entry.

## 5.8 Polymer linkage issues

There are no chain breaks in this entry.

## 6 Fit of model and data [i](#)

### 6.1 Protein, DNA and RNA chains [i](#)

In the following table, the column labelled ‘#RSRZ> 2’ contains the number (and percentage) of RSRZ outliers, followed by percent RSRZ outliers for the chain as percentile scores relative to all X-ray entries and entries of similar resolution. The OWAB column contains the minimum, median, 95<sup>th</sup> percentile and maximum values of the occupancy-weighted average B-factor per residue. The column labelled ‘Q< 0.9’ lists the number of (and percentage) of residues with an average occupancy less than 0.9.

Mol	Chain	Analysed	<RSRZ>	#RSRZ>2	OWAB(Å <sup>2</sup> )	Q<0.9
1	A	56/70 (80%)	0.87	11 (19%) <b>1</b> <b>1</b>	16, 29, 46, 55	0

All (11) RSRZ outliers are listed below:

Mol	Chain	Res	Type	RSRZ
1	A	34	SER	5.7
1	A	64	LEU	4.0
1	A	41	THR	3.3
1	A	29	THR	2.8
1	A	20	ASP	2.7
1	A	33	SER	2.6
1	A	63	PRO	2.1
1	A	14	LEU	2.1
1	A	55	ARG	2.1
1	A	60	TYR	2.0
1	A	24	TYR	2.0

### 6.2 Non-standard residues in protein, DNA, RNA chains [i](#)

There are no non-standard protein/DNA/RNA residues in this entry.

### 6.3 Carbohydrates [i](#)

There are no carbohydrates in this entry.

### 6.4 Ligands [i](#)

In the following table, the Atoms column lists the number of modelled atoms in the group and the number defined in the chemical component dictionary. LLDF column lists the quality of electron density of the group with respect to its neighbouring residues in protein, DNA or RNA chains.

The B-factors column lists the minimum, median, 95<sup>th</sup> percentile and maximum values of B factors of atoms in the group. The column labelled 'Q< 0.9' lists the number of atoms with occupancy less than 0.9.

Mol	Type	Chain	Res	Atoms	RSCC	RSR	LLDF	B-factors( $\text{\AA}^2$ )	Q<0.9
3	CPQ	A	101	60/60	0.64	0.26	2.69	19,52,66,67	14
2	BR	A	201	1/1	0.98	0.04	-	41,41,41,41	1

## 6.5 Other polymers [i](#)

There are no such residues in this entry.