



# wwPDB X-ray Structure Validation Summary Report ⓘ

Feb 1, 2016 – 05:32 PM GMT

PDB ID : 4IMA  
Title : The structure of C436M-hLPYK in complex with Citrate/Mn/ATP/Fru-1,6-BP  
Authors : Zhang, B.; Holyoak, T.; Fenton, A.W.; Tang, Q.L.; Prasannan, C.B.; Deng, J.P.  
Deposited on : 2013-01-02  
Resolution : 1.95 Å(reported)

This is a wwPDB X-ray Structure Validation Summary Report for a publicly released PDB entry.  
We welcome your comments at [validation@mail.wwpdb.org](mailto:validation@mail.wwpdb.org)  
A user guide is available at  
<http://wwpdb.org/validation/2016/XrayValidationReportHelp>  
with specific help available everywhere you see the ⓘ symbol.

---

The following versions of software and data (see [references ⓘ](#)) were used in the production of this report:

MolProbity : 4.02b-467  
Mogul : 1.7 (RC4), CSD as536be (2015)  
Xtriage (Phenix) : 1.9-1692  
EDS : rb-20026688  
Percentile statistics : 20151230.v01 (using entries in the PDB archive December 30th 2015)  
Refmac : 5.8.0135  
CCP4 : 6.5.0  
Ideal geometry (proteins) : Engh & Huber (2001)  
Ideal geometry (DNA, RNA) : Parkinson et al. (1996)  
Validation Pipeline (wwPDB-VP) : trunk26865

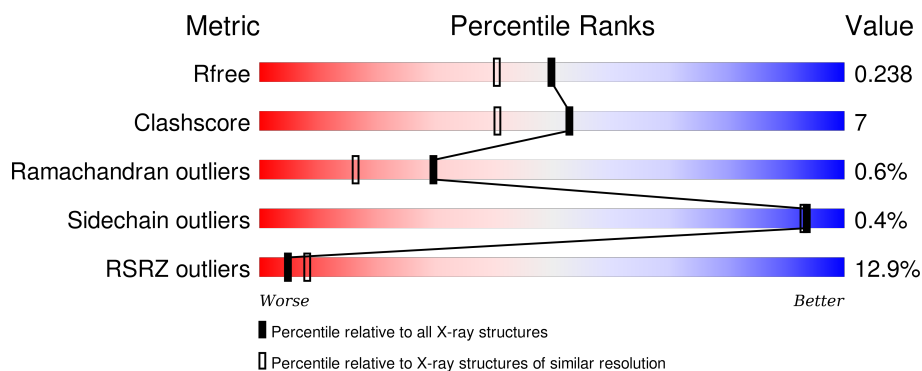
# 1 Overall quality at a glance

The following experimental techniques were used to determine the structure:

## *X-RAY DIFFRACTION*

The reported resolution of this entry is 1.95 Å.

Percentile scores (ranging between 0-100) for global validation metrics of the entry are shown in the following graphic. The table shows the number of entries on which the scores are based.



Metric	Whole archive (#Entries)	Similar resolution (#Entries, resolution range(Å))
$R_{free}$	91344	1833 (1.96-1.96)
Clashscore	102246	1953 (1.96-1.96)
Ramachandran outliers	100387	1936 (1.96-1.96)
Sidechain outliers	100360	1936 (1.96-1.96)
RSRZ outliers	91569	1835 (1.96-1.96)

The table below summarises the geometric issues observed across the polymeric chains and their fit to the electron density. The red, orange, yellow and green segments on the lower bar indicate the fraction of residues that contain outliers for  $\geq 3$ , 2, 1 and 0 types of geometric quality criteria. A grey segment represents the fraction of residues that are not modelled. The numeric value for each fraction is indicated below the corresponding segment, with a dot representing fractions  $\leq 5\%$ . The upper red bar (where present) indicates the fraction of residues that have poor fit to the electron density. The numeric value is given above the bar.

Mol	Chain	Length	Quality of chain
1	A	543	
1	B	543	
1	C	543	
1	D	543	

The following table lists non-polymeric compounds, carbohydrate monomers and non-standard residues in protein, DNA, RNA chains that are outliers for geometric or electron-density-fit crite-

ria:

Mol	Type	Chain	Res	Chirality	Geometry	Clashes	Electron density
6	ADN	D	604	X	-	-	X

## 2 Entry composition

There are 7 unique types of molecules in this entry. The entry contains 16181 atoms, of which 0 are hydrogens and 0 are deuteriums.

In the tables below, the ZeroOcc column contains the number of atoms modelled with zero occupancy, the AltConf column contains the number of residues with at least one atom in alternate conformation and the Trace column contains the number of residues modelled with at most 2 atoms.

- Molecule 1 is a protein called Pyruvate kinase.

Mol	Chain	Residues	Atoms					ZeroOcc	AltConf	Trace
1	A	522	Total	C	N	O	S	89	4	0
			3982	2506	715	742	19			
1	B	500	Total	C	N	O	S	127	2	0
			3800	2390	684	707	19			
1	C	505	Total	C	N	O	S	81	5	0
			3861	2432	693	718	18			
1	D	460	Total	C	N	O	S	87	3	0
			3520	2216	628	657	19			

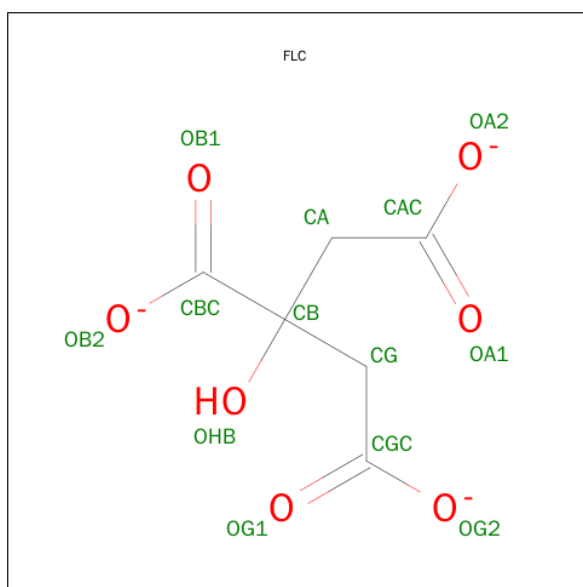
There are 4 discrepancies between the modelled and reference sequences:

Chain	Residue	Modelled	Actual	Comment	Reference
A	436	MET	CYS	ENGINEERED MUTATION	UNP O75758
B	436	MET	CYS	ENGINEERED MUTATION	UNP O75758
C	436	MET	CYS	ENGINEERED MUTATION	UNP O75758
D	436	MET	CYS	ENGINEERED MUTATION	UNP O75758

- Molecule 2 is MANGANESE (II) ION (three-letter code: MN) (formula: Mn).

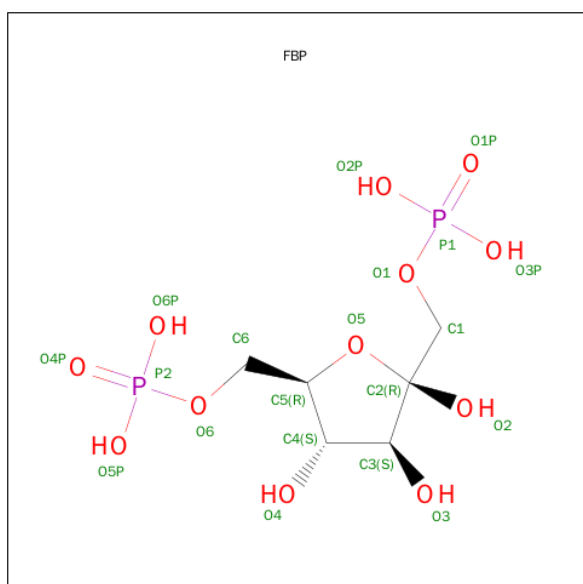
Mol	Chain	Residues	Atoms		ZeroOcc	AltConf
2	B	1	Total	Mn	0	0
			1	1		
2	A	1	Total	Mn	0	0
			1	1		
2	D	1	Total	Mn	0	0
			1	1		
2	C	1	Total	Mn	0	0
			1	1		

- Molecule 3 is CITRATE ANION (three-letter code: FLC) (formula: C<sub>6</sub>H<sub>5</sub>O<sub>7</sub>).



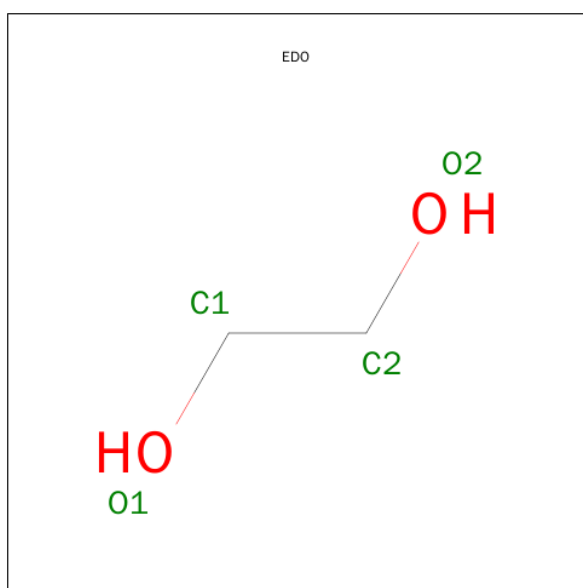
Mol	Chain	Residues	Atoms			ZeroOcc	AltConf
3	A	1	Total	C	O	1	0
			13	6	7		
3	B	1	Total	C	O	0	0
			13	6	7		
3	C	1	Total	C	O	0	0
			13	6	7		
3	D	1	Total	C	O	1	0
			13	6	7		

- Molecule 4 is SUGAR (BETA-FRUCTOSE-1,6-DIPHOSPHATE) (three-letter code: FBP) (formula:  $C_6H_{14}O_{12}P_2$ ).



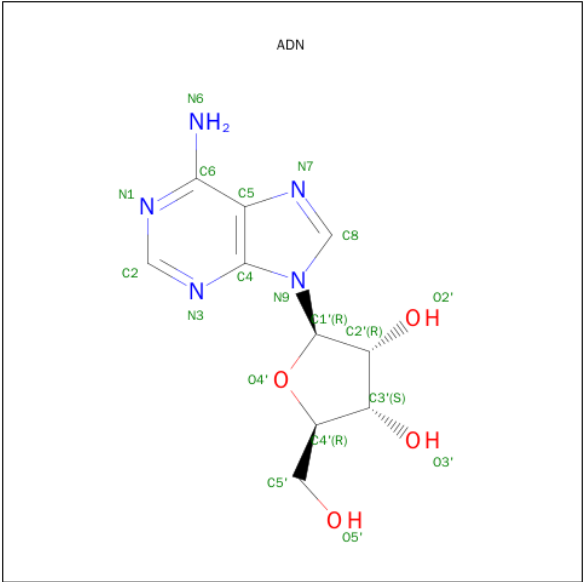
Mol	Chain	Residues	Atoms				ZeroOcc	AltConf
4	A	1	Total	C	O	P	0	0
			20	6	12	2		
4	B	1	Total	C	O	P	0	0
			20	6	12	2		
4	C	1	Total	C	O	P	0	0
			20	6	12	2		
4	D	1	Total	C	O	P	0	0
			20	6	12	2		

- Molecule 5 is 1,2-ETHANEDIOL (three-letter code: EDO) (formula:  $C_2H_6O_2$ ).



Mol	Chain	Residues	Atoms			ZeroOcc	AltConf
5	B	1	Total	C	O	0	0
			4	2	2		

- Molecule 6 is ADENOSINE (three-letter code: ADN) (formula:  $C_{10}H_{13}N_5O_4$ ).



Mol	Chain	Residues	Atoms				ZeroOcc	AltConf
6	D	1	Total	C	N	O	0	0
			19	10	5	4		

- Molecule 7 is water.

Mol	Chain	Residues	Atoms		ZeroOcc	AltConf
7	A	209	Total	O	0	0
			209	209		
7	B	223	Total	O	0	0
			223	223		
7	C	228	Total	O	0	0
			228	228		
7	D	199	Total	O	0	0
			199	199		







## 4 Data and refinement statistics

Property	Value	Source
Space group	P 1 21 1	Depositor
Cell constants a, b, c, $\alpha$ , $\beta$ , $\gamma$	82.75Å 204.73Å 86.53Å 90.00° 96.75° 90.00°	Depositor
Resolution (Å)	38.89 – 1.95 38.89 – 1.95	Depositor EDS
% Data completeness (in resolution range)	87.3 (38.89-1.95) 97.4 (38.89-1.95)	Depositor EDS
$R_{merge}$	(Not available)	Depositor
$R_{sym}$	0.07	Depositor
$\langle I/\sigma(I) \rangle$ <sup>1</sup>	1.94 (at 1.95Å)	Xtriage
Refinement program	PHENIX (phenix.refine: 1.6 _289)	Depositor
R, $R_{free}$	0.198 , 0.233 0.205 , 0.238	Depositor DCC
$R_{free}$ test set	10106 reflections (5.31%)	DCC
Wilson B-factor (Å <sup>2</sup> )	27.8	Xtriage
Anisotropy	0.278	Xtriage
Bulk solvent $k_{sol}$ (e/Å <sup>3</sup> ), $B_{sol}$ (Å <sup>2</sup> )	0.36 , 53.7	EDS
Estimated twinning fraction	0.088 for l,-k,h	Xtriage
L-test for twinning <sup>2</sup>	$\langle  L  \rangle = 0.51$ , $\langle L^2 \rangle = 0.34$	Xtriage
Outliers	1 of 200455 reflections (0.000%)	Xtriage
$F_o, F_c$ correlation	0.95	EDS
Total number of atoms	16181	wwPDB-VP
Average B, all atoms (Å <sup>2</sup> )	40.0	wwPDB-VP

Xtriage's analysis on translational NCS is as follows: *The largest off-origin peak in the Patterson function is 4.33% of the height of the origin peak. No significant pseudotranslation is detected.*

<sup>1</sup>Intensities estimated from amplitudes.

<sup>2</sup>Theoretical values of  $\langle |L| \rangle$ ,  $\langle L^2 \rangle$  for acentric reflections are 0.5, 0.375 respectively for untwinned datasets, and 0.333, 0.2 for perfectly twinned datasets.

## 5 Model quality [i](#)

### 5.1 Standard geometry [i](#)

Bond lengths and bond angles in the following residue types are not validated in this section: ADN, FLC, FBP, EDO, MN

The Z score for a bond length (or angle) is the number of standard deviations the observed value is removed from the expected value. A bond length (or angle) with  $|Z| > 5$  is considered an outlier worth inspection. RMSZ is the root-mean-square of all Z scores of the bond lengths (or angles).

Mol	Chain	Bond lengths		Bond angles	
		RMSZ	$\# Z  > 5$	RMSZ	$\# Z  > 5$
1	A	0.37	0/4056	0.51	0/5491
1	B	0.38	0/3862	0.51	1/5221 (0.0%)
1	C	0.39	0/3936	0.55	2/5326 (0.0%)
1	D	0.39	0/3580	0.54	2/4835 (0.0%)
All	All	0.38	0/15434	0.53	5/20873 (0.0%)

There are no bond length outliers.

All (5) bond angle outliers are listed below:

Mol	Chain	Res	Type	Atoms	Z	Observed(°)	Ideal(°)
1	C	182	VAL	N-CA-CB	-9.69	90.17	111.50
1	B	181	PRO	N-CA-CB	6.08	110.60	103.30
1	C	181	PRO	CB-CA-C	5.73	126.32	112.00
1	D	340	THR	C-N-CA	-5.72	107.41	121.70
1	D	306	ARG	CB-CA-C	5.22	120.85	110.40

There are no chirality outliers.

There are no planarity outliers.

### 5.2 Too-close contacts [i](#)

In the following table, the Non-H and H(model) columns list the number of non-hydrogen atoms and hydrogen atoms in the chain respectively. The H(added) column lists the number of hydrogen atoms added and optimized by MolProbity. The Clashes column lists the number of clashes within the asymmetric unit, whereas Symm-Clashes lists symmetry related clashes.

Mol	Chain	Non-H	H(model)	H(added)	Clashes	Symm-Clashes
1	A	3982	0	4071	41	0
1	B	3800	0	3863	44	0

*Continued on next page...*

*Continued from previous page...*

Mol	Chain	Non-H	H(model)	H(added)	Clashes	Symm-Clashes
1	C	3861	0	3946	62	0
1	D	3520	0	3572	56	0
2	A	1	0	0	0	0
2	B	1	0	0	0	0
2	C	1	0	0	0	0
2	D	1	0	0	0	0
3	A	13	0	4	1	0
3	B	13	0	4	1	0
3	C	13	0	4	2	0
3	D	13	0	4	3	0
4	A	20	0	10	0	0
4	B	20	0	10	0	0
4	C	20	0	10	0	0
4	D	20	0	10	0	0
5	B	4	0	6	0	0
6	D	19	0	13	0	0
7	A	209	0	0	3	0
7	B	223	0	0	2	0
7	C	228	0	0	5	0
7	D	199	0	0	3	0
All	All	16181	0	15527	197	0

The all-atom clashscore is defined as the number of clashes found per 1000 atoms (including hydrogen atoms). The all-atom clashscore for this structure is 7.

The worst 5 of 197 close contacts within the same asymmetric unit are listed below, sorted by their clash magnitude.

Atom-1	Atom-2	Interatomic distance (Å)	Clash overlap (Å)
1:C:173:TYR:CE1	1:C:230:LEU:HD21	1.85	1.11
1:C:173:TYR:CE1	1:C:230:LEU:CD2	2.44	0.99
1:B:156:VAL:HG21	1:B:174:PRO:HA	1.42	0.99
1:C:173:TYR:CD1	1:C:230:LEU:HD21	1.98	0.98
1:C:411[A]:ARG:HG3	1:C:426:ILE:HD11	1.60	0.84

There are no symmetry-related clashes.

## 5.3 Torsion angles ⓘ

### 5.3.1 Protein backbone ⓘ

In the following table, the Percentiles column shows the percent Ramachandran outliers of the chain as a percentile score with respect to all X-ray entries followed by that with respect to entries of similar resolution.

The Analysed column shows the number of residues for which the backbone conformation was analysed, and the total number of residues.

Mol	Chain	Analysed	Favoured	Allowed	Outliers	Percentiles	
1	A	520/543 (96%)	504 (97%)	13 (2%)	3 (1%)	30	16
1	B	488/543 (90%)	470 (96%)	16 (3%)	2 (0%)	39	27
1	C	502/543 (92%)	484 (96%)	16 (3%)	2 (0%)	39	27
1	D	447/543 (82%)	427 (96%)	16 (4%)	4 (1%)	21	9
All	All	1957/2172 (90%)	1885 (96%)	61 (3%)	11 (1%)	30	16

5 of 11 Ramachandran outliers are listed below:

Mol	Chain	Res	Type
1	A	136	LEU
1	D	340	THR
1	D	233	LEU
1	B	340	THR
1	D	175	ASN

### 5.3.2 Protein sidechains ⓘ

In the following table, the Percentiles column shows the percent sidechain outliers of the chain as a percentile score with respect to all X-ray entries followed by that with respect to entries of similar resolution.

The Analysed column shows the number of residues for which the sidechain conformation was analysed, and the total number of residues.

Mol	Chain	Analysed	Rotameric	Outliers	Percentiles	
1	A	424/432 (98%)	421 (99%)	3 (1%)	88	88
1	B	401/432 (93%)	400 (100%)	1 (0%)	95	95
1	C	410/432 (95%)	408 (100%)	2 (0%)	92	91
1	D	372/432 (86%)	371 (100%)	1 (0%)	94	94
All	All	1607/1728 (93%)	1600 (100%)	7 (0%)	93	93

5 of 7 residues with a non-rotameric sidechain are listed below:

Mol	Chain	Res	Type
1	B	296	LEU
1	D	296	LEU
1	C	182	VAL
1	A	69	SER
1	C	537	MET

Some sidechains can be flipped to improve hydrogen bonding and reduce clashes. All (4) such sidechains are listed below:

Mol	Chain	Res	Type
1	A	198	GLN
1	B	211	ASN
1	C	18	GLN
1	C	211	ASN

### 5.3.3 RNA [i](#)

There are no RNA molecules in this entry.

## 5.4 Non-standard residues in protein, DNA, RNA chains [i](#)

There are no non-standard protein/DNA/RNA residues in this entry.

## 5.5 Carbohydrates [i](#)

There are no carbohydrates in this entry.

## 5.6 Ligand geometry [i](#)

Of 14 ligands modelled in this entry, 4 are monoatomic - leaving 10 for Mogul analysis.

In the following table, the Counts columns list the number of bonds (or angles) for which Mogul statistics could be retrieved, the number of bonds (or angles) that are observed in the model and the number of bonds (or angles) that are defined in the chemical component dictionary. The Link column lists molecule types, if any, to which the group is linked. The Z score for a bond length (or angle) is the number of standard deviations the observed value is removed from the expected value. A bond length (or angle) with  $|Z| > 2$  is considered an outlier worth inspection. RMSZ is the root-mean-square of all Z scores of the bond lengths (or angles).

Mol	Type	Chain	Res	Link	Bond lengths			Bond angles		
					Counts	RMSZ	# Z  > 2	Counts	RMSZ	# Z  > 2
3	FLC	A	602	2	3,12,12	2.75	3 (100%)	3,17,17	0.82	0
4	FBP	A	603	-	18,20,20	0.86	1 (5%)	21,32,32	0.77	0
3	FLC	B	602	2	3,12,12	3.03	3 (100%)	3,17,17	1.58	1 (33%)
4	FBP	B	603	-	18,20,20	0.87	1 (5%)	21,32,32	0.76	0
5	EDO	B	604	-	3,3,3	0.56	0	2,2,2	0.52	0
3	FLC	C	602	2	3,12,12	3.16	3 (100%)	3,17,17	1.43	1 (33%)
4	FBP	C	603	-	18,20,20	0.81	1 (5%)	21,32,32	0.81	0
3	FLC	D	602	2	3,12,12	3.03	3 (100%)	3,17,17	1.77	2 (66%)
4	FBP	D	603	-	18,20,20	0.88	1 (5%)	21,32,32	0.81	1 (4%)
6	ADN	D	604	-	16,21,21	0.97	1 (6%)	16,31,31	2.48	2 (12%)

In the following table, the Chirals column lists the number of chiral outliers, the number of chiral centers analysed, the number of these observed in the model and the number defined in the chemical component dictionary. Similar counts are reported in the Torsion and Rings columns. '-' means no outliers of that kind were identified.

Mol	Type	Chain	Res	Link	Chirals	Torsions	Rings
3	FLC	A	602	2	-	0/6/16/16	0/0/0/0
4	FBP	A	603	-	-	0/13/32/32	0/1/1/1
3	FLC	B	602	2	-	0/6/16/16	0/0/0/0
4	FBP	B	603	-	-	0/13/32/32	0/1/1/1
5	EDO	B	604	-	-	0/1/1/1	0/0/0/0
3	FLC	C	602	2	-	0/6/16/16	0/0/0/0
4	FBP	C	603	-	-	0/13/32/32	0/1/1/1
3	FLC	D	602	2	-	0/6/16/16	0/0/0/0
4	FBP	D	603	-	-	0/13/32/32	0/1/1/1
6	ADN	D	604	-	2/2/4/4	0/2/22/22	0/3/3/3

The worst 5 of 17 bond length outliers are listed below:

Mol	Chain	Res	Type	Atoms	Z	Observed(Å)	Ideal(Å)
3	D	602	FLC	CG-CB	-3.21	1.49	1.54
3	C	602	FLC	CG-CB	-3.20	1.49	1.54
3	C	602	FLC	CA-CB	-3.14	1.49	1.54
3	C	602	FLC	OHB-CB	-3.14	1.38	1.43
3	D	602	FLC	CA-CB	-3.10	1.50	1.54

The worst 5 of 7 bond angle outliers are listed below:

Mol	Chain	Res	Type	Atoms	Z	Observed(°)	Ideal(°)
6	D	604	ADN	N3-C2-N1	-8.87	122.10	128.89
3	B	602	FLC	CB-CA-CAC	-2.64	110.74	114.96
3	D	602	FLC	CB-CG-CGC	-2.23	111.39	114.96
3	C	602	FLC	CB-CA-CAC	-2.08	111.64	114.96
3	D	602	FLC	CB-CA-CAC	-2.04	111.69	114.96

All (2) chirality outliers are listed below:

Mol	Chain	Res	Type	Atom
6	D	604	ADN	C3'
6	D	604	ADN	C1'

There are no torsion outliers.

There are no ring outliers.

4 monomers are involved in 7 short contacts:

Mol	Chain	Res	Type	Clashes	Symm-Clashes
3	A	602	FLC	1	0
3	B	602	FLC	1	0
3	C	602	FLC	2	0
3	D	602	FLC	3	0

## 5.7 Other polymers [i](#)

There are no such residues in this entry.

## 5.8 Polymer linkage issues [i](#)

There are no chain breaks in this entry.



## 6 Fit of model and data [i](#)

### 6.1 Protein, DNA and RNA chains [i](#)

In the following table, the column labelled ‘#RSRZ> 2’ contains the number (and percentage) of RSRZ outliers, followed by percent RSRZ outliers for the chain as percentile scores relative to all X-ray entries and entries of similar resolution. The OWAB column contains the minimum, median, 95<sup>th</sup> percentile and maximum values of the occupancy-weighted average B-factor per residue. The column labelled ‘Q< 0.9’ lists the number of (and percentage) of residues with an average occupancy less than 0.9.

Mol	Chain	Analysed	<RSRZ>	#RSRZ>2	OWAB(Å <sup>2</sup> )	Q<0.9
1	A	522/543 (96%)	0.48	53 (10%) <b>9</b> <b>14</b>	22, 35, 67, 79	29 (5%)
1	B	500/543 (92%)	0.70	72 (14%) <b>3</b> <b>6</b>	21, 34, 82, 97	41 (8%)
1	C	505/543 (93%)	0.62	67 (13%) <b>4</b> <b>7</b>	23, 34, 84, 99	32 (6%)
1	D	460/543 (84%)	0.69	64 (13%) <b>4</b> <b>6</b>	23, 34, 79, 95	27 (5%)
All	All	1987/2172 (91%)	0.62	256 (12%) <b>5</b> <b>8</b>	21, 34, 78, 99	129 (6%)

The worst 5 of 256 RSRZ outliers are listed below:

Mol	Chain	Res	Type	RSRZ
1	D	144	VAL	9.1
1	B	196	VAL	8.0
1	D	146	LEU	7.9
1	D	195	LEU	7.6
1	D	147	VAL	7.2

### 6.2 Non-standard residues in protein, DNA, RNA chains [i](#)

There are no non-standard protein/DNA/RNA residues in this entry.

### 6.3 Carbohydrates [i](#)

There are no carbohydrates in this entry.

### 6.4 Ligands [i](#)

In the following table, the Atoms column lists the number of modelled atoms in the group and the number defined in the chemical component dictionary. LLDF column lists the quality of electron density of the group with respect to its neighbouring residues in protein, DNA or RNA chains. The B-factors column lists the minimum, median, 95<sup>th</sup> percentile and maximum values of B factors

of atoms in the group. The column labelled 'Q< 0.9' lists the number of atoms with occupancy less than 0.9.

Mol	Type	Chain	Res	Atoms	RSCC	RSR	LLDF	B-factors( $\text{\AA}^2$ )	Q<0.9
6	ADN	D	604	19/19	0.89	0.23	7.27	26,42,50,52	7
5	EDO	B	604	4/4	0.85	0.18	1.77	34,35,40,44	0
3	FLC	B	602	13/13	0.96	0.20	1.14	29,33,36,38	8
3	FLC	A	602	13/13	0.94	0.15	-0.05	29,33,37,40	9
4	FBP	A	603	20/20	0.97	0.09	-0.49	28,32,34,34	0
3	FLC	D	602	13/13	0.94	0.12	-0.59	33,38,44,48	4
3	FLC	C	602	13/13	0.96	0.10	-0.72	31,34,37,38	6
4	FBP	C	603	20/20	0.97	0.08	-0.73	26,32,35,35	0
4	FBP	B	603	20/20	0.97	0.08	-0.80	23,29,31,32	0
4	FBP	D	603	20/20	0.96	0.08	-0.84	28,31,39,39	0
2	MN	C	601	1/1	0.99	0.06	-	36,36,36,36	0
2	MN	D	601	1/1	0.99	0.07	-	43,43,43,43	0
2	MN	B	601	1/1	1.00	0.05	-	34,34,34,34	0
2	MN	A	601	1/1	0.99	0.10	-	37,37,37,37	0

## 6.5 Other polymers

There are no such residues in this entry.