



# wwPDB X-ray Structure Validation Summary Report ⓘ

Jun 9, 2016 – 12:22 PM EDT

PDB ID : 5IQB  
Title : Aminoglycoside Phosphotransferase (2'')-Ia (CTD of AAC(6')-Ie/APH(2'')-Ia)  
in complex with GMPPNP, Magnesium, and Kanamycin A  
Authors : Caldwell, S.J.; Berghuis, A.M.  
Deposited on : 2016-03-10  
Resolution : 2.30 Å(reported)

This is a wwPDB X-ray Structure Validation Summary Report for a publicly released PDB entry.  
We welcome your comments at [validation@mail.wwpdb.org](mailto:validation@mail.wwpdb.org)  
A user guide is available at  
<http://wwpdb.org/validation/2016/XrayValidationReportHelp>  
with specific help available everywhere you see the ⓘ symbol.

---

The following versions of software and data (see [references ⓘ](#)) were used in the production of this report:

MolProbity : 4.02b-467  
Mogul : 1.7.1 (RC1), CSD as537be (2016)  
Xtriage (Phenix) : 1.9-1692  
EDS : rb-20027674  
Percentile statistics : 20151230.v01 (using entries in the PDB archive December 30th 2015)  
Refmac : 5.8.0135  
CCP4 : 6.5.0  
Ideal geometry (proteins) : Engh & Huber (2001)  
Ideal geometry (DNA, RNA) : Parkinson et al. (1996)  
Validation Pipeline (wwPDB-VP) : rb-20027674

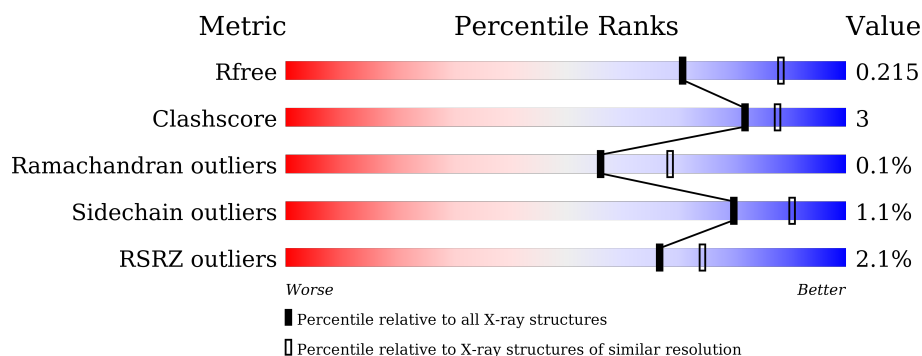
# 1 Overall quality at a glance

The following experimental techniques were used to determine the structure:

## *X-RAY DIFFRACTION*

The reported resolution of this entry is 2.30 Å.

Percentile scores (ranging between 0-100) for global validation metrics of the entry are shown in the following graphic. The table shows the number of entries on which the scores are based.



Metric	Whole archive (#Entries)	Similar resolution (#Entries, resolution range(Å))
$R_{free}$	91344	3852 (2.30-2.30)
Clashscore	102246	4452 (2.30-2.30)
Ramachandran outliers	100387	4410 (2.30-2.30)
Sidechain outliers	100360	4409 (2.30-2.30)
RSRZ outliers	91569	3857 (2.30-2.30)

The table below summarises the geometric issues observed across the polymeric chains and their fit to the electron density. The red, orange, yellow and green segments on the lower bar indicate the fraction of residues that contain outliers for  $\geq 3$ , 2, 1 and 0 types of geometric quality criteria. A grey segment represents the fraction of residues that are not modelled. The numeric value for each fraction is indicated below the corresponding segment, with a dot representing fractions  $\leq 5\%$ . The upper red bar (where present) indicates the fraction of residues that have poor fit to the electron density. The numeric value is given above the bar.

Mol	Chain	Length	Quality of chain
1	A	305	<div> <div style="width: 100%; height: 10px; background: linear-gradient(to right, red 0%, red 1%, orange 1%, orange 89%, yellow 89%, yellow 97%, grey 97%);"></div> <div style="display: flex; justify-content: space-between; width: 100%;"> <span>%</span> <span>89%</span> <span>7%</span> <span>.</span> </div> </div>
1	B	305	<div> <div style="width: 100%; height: 10px; background: linear-gradient(to right, orange 0%, orange 89%, yellow 89%, yellow 97%, grey 97%);"></div> <div style="display: flex; justify-content: space-between; width: 100%;"> <span></span> <span>89%</span> <span>7%</span> <span>.</span> </div> </div>
1	C	305	<div> <div style="width: 100%; height: 10px; background: linear-gradient(to right, red 0%, red 1%, orange 1%, orange 89%, yellow 89%, yellow 96%, grey 96%);"></div> <div style="display: flex; justify-content: space-between; width: 100%;"> <span>%</span> <span>89%</span> <span>6%</span> <span>5%</span> </div> </div>
1	D	305	<div> <div style="width: 100%; height: 10px; background: linear-gradient(to right, red 0%, red 6%, orange 6%, orange 89%, yellow 89%, yellow 95%, grey 95%);"></div> <div style="display: flex; justify-content: space-between; width: 100%;"> <span>6%</span> <span>89%</span> <span>6%</span> <span>5%</span> </div> </div>

## 2 Entry composition [i](#)

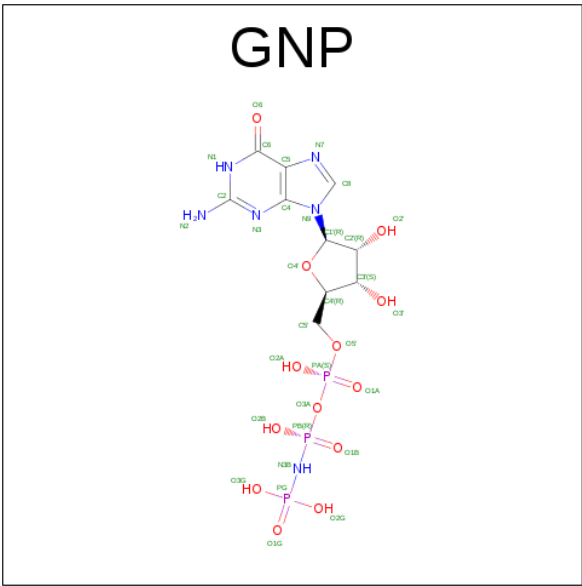
There are 6 unique types of molecules in this entry. The entry contains 10672 atoms, of which 0 are hydrogens and 0 are deuteriums.

In the tables below, the ZeroOcc column contains the number of atoms modelled with zero occupancy, the AltConf column contains the number of residues with at least one atom in alternate conformation and the Trace column contains the number of residues modelled with at most 2 atoms.

- Molecule 1 is a protein called Bifunctional AAC/APH.

Mol	Chain	Residues	Atoms					ZeroOcc	AltConf	Trace
1	A	292	Total	C	N	O	S	0	1	0
			2411	1541	375	485	10			
1	B	292	Total	C	N	O	S	0	1	0
			2410	1542	372	486	10			
1	C	290	Total	C	N	O	S	0	1	0
			2398	1534	372	482	10			
1	D	289	Total	C	N	O	S	0	1	0
			2380	1520	373	477	10			

- Molecule 2 is PHOSPHOAMINOPHOSPHONIC ACID-GUANYLATE ESTER (three-letter code: GNP) (formula: C<sub>10</sub>H<sub>17</sub>N<sub>6</sub>O<sub>13</sub>P<sub>3</sub>).



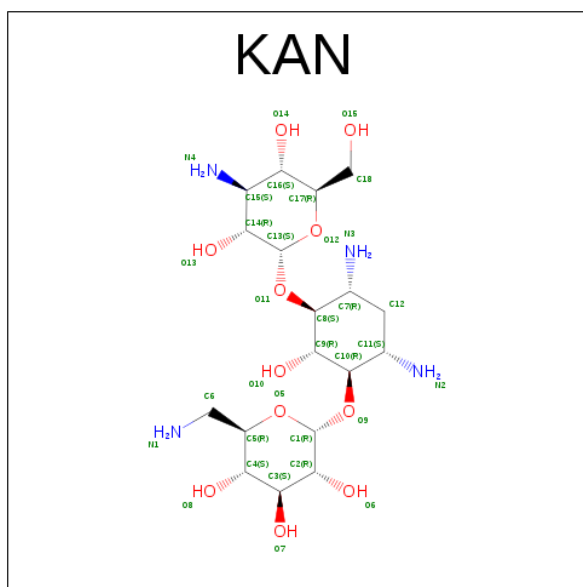
Mol	Chain	Residues	Atoms					ZeroOcc	AltConf
2	A	1	Total	C	N	O	P	0	1
			41	10	7	19	5		
2	B	1	Total	C	N	O	P	0	1
			41	10	7	19	5		

*Continued on next page...*

*Continued from previous page...*

Mol	Chain	Residues	Atoms					ZeroOcc	AltConf
2	C	1	Total	C	N	O	P	0	1
			41	10	7	19	5		
2	D	1	Total	C	N	O	P	0	1
			41	10	7	19	5		

- Molecule 3 is KANAMYCIN A (three-letter code: KAN) (formula:  $C_{18}H_{36}N_4O_{11}$ ).



Mol	Chain	Residues	Atoms					ZeroOcc	AltConf
3	A	1	Total	C	N	O		0	0
			33	18	4	11			
3	B	1	Total	C	N	O		0	0
			33	18	4	11			
3	C	1	Total	C	N	O		0	0
			33	18	4	11			
3	D	1	Total	C	N	O		0	0
			33	18	4	11			

- Molecule 4 is MAGNESIUM ION (three-letter code: MG) (formula: Mg).

Mol	Chain	Residues	Atoms		ZeroOcc	AltConf
4	B	2	Total	Mg	0	0
			2	2		
4	A	2	Total	Mg	0	0
			2	2		
4	D	2	Total	Mg	0	0
			2	2		

*Continued on next page...*

*Continued from previous page...*

Mol	Chain	Residues	Atoms		ZeroOcc	AltConf
4	C	3	Total 3	Mg 3	0	0

- Molecule 5 is CHLORIDE ION (three-letter code: CL) (formula: Cl).

Mol	Chain	Residues	Atoms		ZeroOcc	AltConf
5	A	1	Total 1	Cl 1	0	0
5	C	1	Total 1	Cl 1	0	0

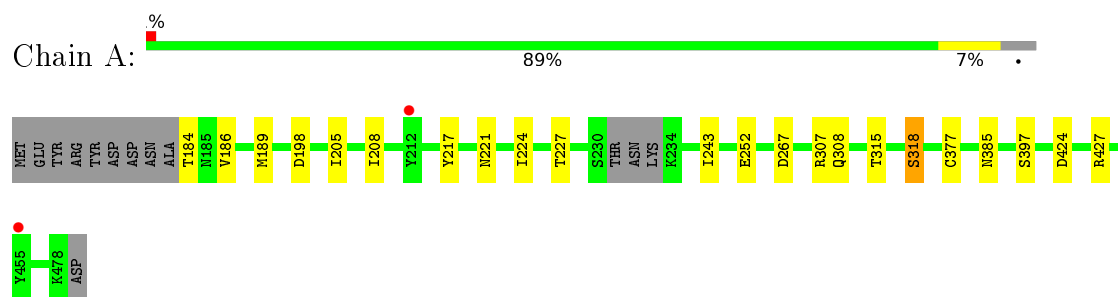
- Molecule 6 is water.

Mol	Chain	Residues	Atoms		ZeroOcc	AltConf
6	A	210	Total 210	O 210	0	0
6	B	230	Total 230	O 230	0	0
6	C	177	Total 177	O 177	0	0
6	D	149	Total 149	O 149	0	0

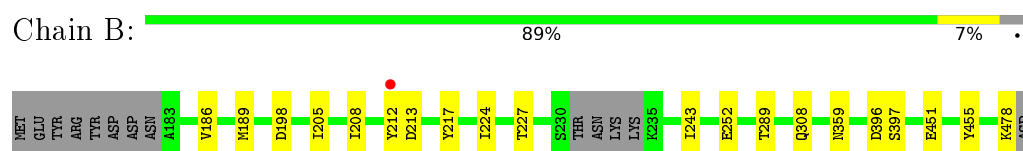
### 3 Residue-property plots [i](#)

These plots are drawn for all protein, RNA and DNA chains in the entry. The first graphic for a chain summarises the proportions of errors displayed in the second graphic. The second graphic shows the sequence view annotated by issues in geometry and electron density. Residues are color-coded according to the number of geometric quality criteria for which they contain at least one outlier: green = 0, yellow = 1, orange = 2 and red = 3 or more. A red dot above a residue indicates a poor fit to the electron density ( $RSRZ > 2$ ). Stretches of 2 or more consecutive residues without any outlier are shown as a green connector. Residues present in the sample, but not in the model, are shown in grey.

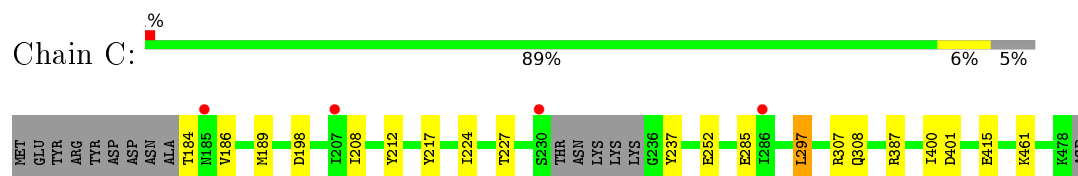
- Molecule 1: Bifunctional AAC/APH



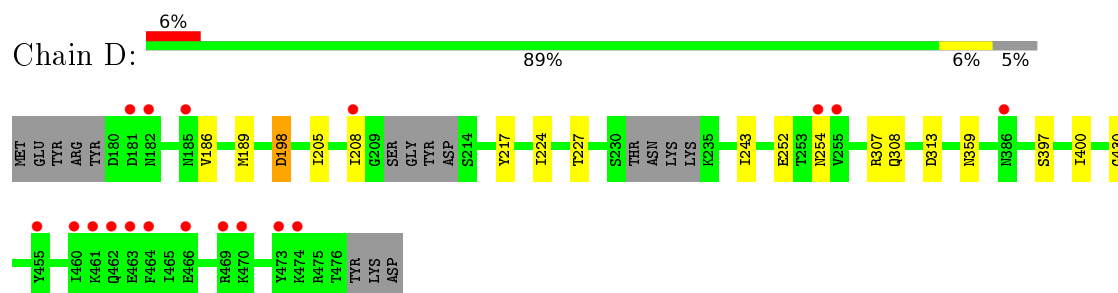
- Molecule 1: Bifunctional AAC/APH



- Molecule 1: Bifunctional AAC/APH



- Molecule 1: Bifunctional AAC/APH



## 4 Data and refinement statistics

Property	Value	Source
Space group	P 1 21 1	Depositor
Cell constants a, b, c, $\alpha$ , $\beta$ , $\gamma$	89.43 Å 99.22 Å 93.51 Å 90.00° 105.46° 90.00°	Depositor
Resolution (Å)	90.13 – 2.30 55.36 – 2.30	Depositor EDS
% Data completeness (in resolution range)	98.8 (90.13-2.30) 98.9 (55.36-2.30)	Depositor EDS
$R_{merge}$	0.09	Depositor
$R_{sym}$	(Not available)	Depositor
$\langle I/\sigma(I) \rangle$ <sup>1</sup>	1.62 (at 2.29 Å)	Xtriage
Refinement program	REFMAC 5.8.0073	Depositor
R, $R_{free}$	0.167 , 0.211 0.172 , 0.215	Depositor DCC
$R_{free}$ test set	3504 reflections (5.33%)	DCC
Wilson B-factor (Å <sup>2</sup> )	48.4	Xtriage
Anisotropy	0.101	Xtriage
Bulk solvent $k_{sol}$ (e/Å <sup>3</sup> ), $B_{sol}$ (Å <sup>2</sup> )	0.35 , 48.4	EDS
L-test for twinning <sup>2</sup>	$\langle  L  \rangle = 0.49$ , $\langle L^2 \rangle = 0.32$	Xtriage
Estimated twinning fraction	0.015 for l,-k,h	Xtriage
$F_o, F_c$ correlation	0.97	EDS
Total number of atoms	10672	wwPDB-VP
Average B, all atoms (Å <sup>2</sup> )	59.0	wwPDB-VP

Xtriage's analysis on translational NCS is as follows: *The largest off-origin peak in the Patterson function is 3.67% of the height of the origin peak. No significant pseudotranslation is detected.*

<sup>1</sup>Intensities estimated from amplitudes.

<sup>2</sup>Theoretical values of  $\langle |L| \rangle$ ,  $\langle L^2 \rangle$  for acentric reflections are 0.5, 0.375 respectively for untwinned datasets, and 0.333, 0.2 for perfectly twinned datasets.

## 5 Model quality [i](#)

### 5.1 Standard geometry [i](#)

Bond lengths and bond angles in the following residue types are not validated in this section: MG, GNP, KAN, CL

The Z score for a bond length (or angle) is the number of standard deviations the observed value is removed from the expected value. A bond length (or angle) with  $|Z| > 5$  is considered an outlier worth inspection. RMSZ is the root-mean-square of all Z scores of the bond lengths (or angles).

Mol	Chain	Bond lengths		Bond angles	
		RMSZ	$\# Z  > 5$	RMSZ	$\# Z  > 5$
1	A	0.78	1/2457 (0.0%)	0.77	0/3313
1	B	0.75	0/2456	0.75	0/3311
1	C	0.76	0/2444	0.78	0/3295
1	D	0.66	0/2423	0.73	0/3266
All	All	0.74	1/9780 (0.0%)	0.76	0/13185

All (1) bond length outliers are listed below:

Mol	Chain	Res	Type	Atoms	Z	Observed(Å)	Ideal(Å)
1	A	377	CYS	CB-SG	-5.43	1.73	1.81

There are no bond angle outliers.

There are no chirality outliers.

There are no planarity outliers.

### 5.2 Too-close contacts [i](#)

In the following table, the Non-H and H(model) columns list the number of non-hydrogen atoms and hydrogen atoms in the chain respectively. The H(added) column lists the number of hydrogen atoms added and optimized by MolProbity. The Clashes column lists the number of clashes within the asymmetric unit, whereas Symm-Clashes lists symmetry related clashes.

Mol	Chain	Non-H	H(model)	H(added)	Clashes	Symm-Clashes
1	A	2411	0	2322	10	0
1	B	2410	0	2325	13	0
1	C	2398	0	2314	16	0
1	D	2380	0	2297	12	0
2	A	41	0	2	5	0
2	B	41	0	2	2	0

*Continued on next page...*



*Continued from previous page...*

Mol	Chain	Non-H	H(model)	H(added)	Clashes	Symm-Clashes
2	C	41	0	2	0	0
2	D	41	0	2	2	0
3	A	33	0	36	0	0
3	B	33	0	36	2	0
3	C	33	0	36	1	0
3	D	33	0	36	1	0
4	A	2	0	0	0	0
4	B	2	0	0	0	0
4	C	3	0	0	0	0
4	D	2	0	0	0	0
5	A	1	0	0	0	0
5	C	1	0	0	1	0
6	A	210	0	0	7	0
6	B	230	0	0	6	1
6	C	177	0	0	4	1
6	D	149	0	0	4	0
All	All	10672	0	9410	61	1

The all-atom clashscore is defined as the number of clashes found per 1000 atoms (including hydrogen atoms). The all-atom clashscore for this structure is 3.

The worst 5 of 61 close contacts within the same asymmetric unit are listed below, sorted by their clash magnitude.

Atom-1	Atom-2	Interatomic distance (Å)	Clash overlap (Å)
2:A:500[A]:GNP:O3G	6:A:926:HOH:O	1.55	1.21
2:B:500[A]:GNP:O3G	6:B:924:HOH:O	1.59	1.20
2:A:500[A]:GNP:O1G	6:A:924:HOH:O	1.81	0.96
1:C:184:THR:HG23	1:C:186:VAL:HG22	1.62	0.82
2:B:500[B]:GNP:O1G	6:B:924:HOH:O	1.98	0.81

All (1) symmetry-related close contacts are listed below. The label for Atom-2 includes the symmetry operator and encoded unit-cell translations to be applied.

Atom-1	Atom-2	Interatomic distance (Å)	Clash overlap (Å)
6:B:1391:HOH:O	6:C:1240:HOH:O[2_746]	2.12	0.08

## 5.3 Torsion angles

### 5.3.1 Protein backbone

In the following table, the Percentiles column shows the percent Ramachandran outliers of the chain as a percentile score with respect to all X-ray entries followed by that with respect to entries of similar resolution.

The Analysed column shows the number of residues for which the backbone conformation was analysed, and the total number of residues.

Mol	Chain	Analysed	Favoured	Allowed	Outliers	Percentiles	
1	A	289/305 (95%)	278 (96%)	11 (4%)	0	100	100
1	B	289/305 (95%)	279 (96%)	10 (4%)	0	100	100
1	C	287/305 (94%)	277 (96%)	10 (4%)	0	100	100
1	D	284/305 (93%)	273 (96%)	10 (4%)	1 (0%)	39	48
All	All	1149/1220 (94%)	1107 (96%)	41 (4%)	1 (0%)	56	68

All (1) Ramachandran outliers are listed below:

Mol	Chain	Res	Type
1	D	400	ILE

### 5.3.2 Protein sidechains

In the following table, the Percentiles column shows the percent sidechain outliers of the chain as a percentile score with respect to all X-ray entries followed by that with respect to entries of similar resolution.

The Analysed column shows the number of residues for which the sidechain conformation was analysed, and the total number of residues.

Mol	Chain	Analysed	Rotameric	Outliers	Percentiles	
1	A	267/281 (95%)	262 (98%)	5 (2%)	65	81
1	B	267/281 (95%)	264 (99%)	3 (1%)	80	90
1	C	266/281 (95%)	263 (99%)	3 (1%)	80	90
1	D	263/281 (94%)	262 (100%)	1 (0%)	93	97
All	All	1063/1124 (95%)	1051 (99%)	12 (1%)	80	90

5 of 12 residues with a non-rotameric sidechain are listed below:

Mol	Chain	Res	Type
1	B	198	ASP
1	B	212	TYR
1	C	285	GLU
1	A	385	ASN
1	C	198	ASP

Some sidechains can be flipped to improve hydrogen bonding and reduce clashes. 5 of 12 such sidechains are listed below:

Mol	Chain	Res	Type
1	C	296	ASN
1	C	327	ASN
1	D	296	ASN
1	A	385	ASN
1	D	295	GLN

### 5.3.3 RNA [i](#)

There are no RNA molecules in this entry.

## 5.4 Non-standard residues in protein, DNA, RNA chains [i](#)

There are no non-standard protein/DNA/RNA residues in this entry.

## 5.5 Carbohydrates [i](#)

There are no carbohydrates in this entry.

## 5.6 Ligand geometry [i](#)

Of 23 ligands modelled in this entry, 11 are monoatomic - leaving 12 for Mogul analysis.

In the following table, the Counts columns list the number of bonds (or angles) for which Mogul statistics could be retrieved, the number of bonds (or angles) that are observed in the model and the number of bonds (or angles) that are defined in the chemical component dictionary. The Link column lists molecule types, if any, to which the group is linked. The Z score for a bond length (or angle) is the number of standard deviations the observed value is removed from the expected value. A bond length (or angle) with  $|Z| > 2$  is considered an outlier worth inspection. RMSZ is the root-mean-square of all Z scores of the bond lengths (or angles).

Mol	Type	Chain	Res	Link	Bond lengths			Bond angles		
					Counts	RMSZ	# Z  > 2	Counts	RMSZ	# Z  > 2
2	GNP	A	500[A]	4	29,34,34	2.55	6 (20%)	28,54,54	1.48	3 (10%)
2	GNP	A	500[B]	4	29,34,34	2.60	7 (24%)	28,54,54	1.49	4 (14%)
3	KAN	A	600	-	35,35,35	0.39	0	44,52,52	0.87	2 (4%)
2	GNP	B	500[A]	4	29,34,34	2.20	8 (27%)	28,54,54	1.62	4 (14%)
2	GNP	B	500[B]	4	29,34,34	2.22	8 (27%)	28,54,54	1.41	3 (10%)
3	KAN	B	600	-	35,35,35	0.48	0	44,52,52	0.85	2 (4%)
2	GNP	C	500[A]	4	29,34,34	2.28	9 (31%)	28,54,54	1.69	5 (17%)
2	GNP	C	500[B]	4	29,34,34	2.22	9 (31%)	28,54,54	1.76	6 (21%)
3	KAN	C	600	-	35,35,35	0.41	0	44,52,52	0.84	2 (4%)
2	GNP	D	500[A]	4	29,34,34	2.08	7 (24%)	28,54,54	1.55	3 (10%)
2	GNP	D	500[B]	4	29,34,34	2.05	7 (24%)	28,54,54	1.44	2 (7%)
3	KAN	D	600	-	35,35,35	0.43	0	44,52,52	1.08	3 (6%)

In the following table, the Chirals column lists the number of chiral outliers, the number of chiral centers analysed, the number of these observed in the model and the number defined in the chemical component dictionary. Similar counts are reported in the Torsion and Rings columns. '-' means no outliers of that kind were identified.

Mol	Type	Chain	Res	Link	Chirals	Torsions	Rings
2	GNP	A	500[A]	4	-	0/16/38/38	0/3/3/3
2	GNP	A	500[B]	4	-	0/16/38/38	0/3/3/3
3	KAN	A	600	-	-	0/12/72/72	0/3/3/3
2	GNP	B	500[A]	4	-	0/16/38/38	0/3/3/3
2	GNP	B	500[B]	4	-	0/16/38/38	0/3/3/3
3	KAN	B	600	-	-	0/12/72/72	0/3/3/3
2	GNP	C	500[A]	4	-	1/16/38/38	0/3/3/3
2	GNP	C	500[B]	4	-	1/16/38/38	0/3/3/3
3	KAN	C	600	-	-	0/12/72/72	0/3/3/3
2	GNP	D	500[A]	4	-	0/16/38/38	0/3/3/3
2	GNP	D	500[B]	4	-	1/16/38/38	0/3/3/3
3	KAN	D	600	-	-	0/12/72/72	0/3/3/3

The worst 5 of 61 bond length outliers are listed below:

Mol	Chain	Res	Type	Atoms	Z	Observed(Å)	Ideal(Å)
2	A	500[B]	GNP	C5-C6	-9.16	1.36	1.53
2	A	500[A]	GNP	C5-C6	-9.16	1.36	1.53
2	C	500[B]	GNP	C4-N9	-8.05	1.37	1.47
2	C	500[A]	GNP	C4-N9	-8.05	1.37	1.47
2	A	500[B]	GNP	C4-N9	-7.79	1.37	1.47

The worst 5 of 39 bond angle outliers are listed below:

Mol	Chain	Res	Type	Atoms	Z	Observed(°)	Ideal(°)
2	B	500[A]	GNP	O3G-PG-O1G	-4.07	102.87	113.58
3	D	600	KAN	O9-C10-C11	-3.04	101.56	108.92
2	A	500[A]	GNP	O3G-PG-O1G	-2.95	105.81	113.58
2	C	500[B]	GNP	O6-C6-N1	-2.82	119.09	122.80
2	C	500[A]	GNP	O6-C6-N1	-2.82	119.09	122.80

There are no chirality outliers.

All (3) torsion outliers are listed below:

Mol	Chain	Res	Type	Atoms
2	C	500[B]	GNP	O1G-PG-N3B-PB
2	D	500[B]	GNP	O1G-PG-N3B-PB
2	C	500[A]	GNP	O1B-PB-N3B-PG

There are no ring outliers.

8 monomers are involved in 12 short contacts:

Mol	Chain	Res	Type	Clashes	Symm-Clashes
2	A	500[A]	GNP	4	0
2	A	500[B]	GNP	1	0
2	B	500[A]	GNP	1	0
2	B	500[B]	GNP	1	0
3	B	600	KAN	2	0
3	C	600	KAN	1	0
2	D	500[A]	GNP	2	0
3	D	600	KAN	1	0

## 5.7 Other polymers [i](#)

There are no such residues in this entry.

## 5.8 Polymer linkage issues [i](#)

There are no chain breaks in this entry.

## 6 Fit of model and data [i](#)

### 6.1 Protein, DNA and RNA chains [i](#)

In the following table, the column labelled ‘#RSRZ> 2’ contains the number (and percentage) of RSRZ outliers, followed by percent RSRZ outliers for the chain as percentile scores relative to all X-ray entries and entries of similar resolution. The OWAB column contains the minimum, median, 95<sup>th</sup> percentile and maximum values of the occupancy-weighted average B-factor per residue. The column labelled ‘Q< 0.9’ lists the number of (and percentage) of residues with an average occupancy less than 0.9.

Mol	Chain	Analysed	<RSRZ>	#RSRZ>2	OWAB(Å <sup>2</sup> )	Q<0.9
1	A	292/305 (95%)	0.05	2 (0%) 89 92	34, 52, 80, 101	0
1	B	292/305 (95%)	0.02	1 (0%) 94 96	36, 54, 83, 110	0
1	C	290/305 (95%)	0.14	4 (1%) 78 83	32, 55, 89, 113	0
1	D	289/305 (94%)	0.30	18 (6%) 24 32	43, 64, 101, 123	0
All	All	1163/1220 (95%)	0.13	25 (2%) 67 74	32, 56, 90, 123	0

The worst 5 of 25 RSRZ outliers are listed below:

Mol	Chain	Res	Type	RSRZ
1	D	473	TYR	5.0
1	A	212	TYR	3.9
1	D	464	PHE	3.7
1	D	181	ASP	3.2
1	D	474	LYS	3.0

### 6.2 Non-standard residues in protein, DNA, RNA chains [i](#)

There are no non-standard protein/DNA/RNA residues in this entry.

### 6.3 Carbohydrates [i](#)

There are no carbohydrates in this entry.

### 6.4 Ligands [i](#)

In the following table, the Atoms column lists the number of modelled atoms in the group and the number defined in the chemical component dictionary. LLDF column lists the quality of electron density of the group with respect to its neighbouring residues in protein, DNA or RNA chains. The B-factors column lists the minimum, median, 95<sup>th</sup> percentile and maximum values of B factors

of atoms in the group. The column labelled 'Q< 0.9' lists the number of atoms with occupancy less than 0.9.

Mol	Type	Chain	Res	Atoms	RSCC	RSR	LLDF	B-factors(Å <sup>2</sup> )	Q<0.9
2	GNP	A	500[A]	32/32	0.98	0.14	0.10	37,43,47,53	9
3	KAN	B	600	33/33	0.95	0.13	-0.14	49,55,63,70	0
3	KAN	A	600	33/33	0.97	0.13	-0.19	40,49,57,64	0
2	GNP	A	500[B]	32/32	0.98	0.14	-0.25	37,45,50,53	9
3	KAN	C	600	33/33	0.90	0.13	-0.27	64,70,75,79	0
2	GNP	D	500[B]	32/32	0.96	0.12	-0.33	47,56,63,63	9
2	GNP	B	500[A]	32/32	0.97	0.13	-0.48	40,43,48,50	9
3	KAN	D	600	33/33	0.97	0.12	-0.52	48,51,59,64	0
2	GNP	B	500[B]	32/32	0.97	0.13	-0.60	40,43,46,50	9
2	GNP	C	500[A]	32/32	0.97	0.11	-0.73	43,48,52,58	9
2	GNP	D	500[A]	32/32	0.96	0.12	-0.76	47,57,63,63	9
2	GNP	C	500[B]	32/32	0.97	0.11	-1.06	39,47,52,58	9
4	MG	B	702	1/1	0.99	0.09	-2.44	44,44,44,44	0
4	MG	D	702	1/1	0.97	0.06	-3.65	47,47,47,47	0
4	MG	C	702	1/1	0.97	0.07	-3.86	49,49,49,49	0
4	MG	A	702	1/1	0.97	0.08	-4.72	46,46,46,46	0
4	MG	B	700	1/1	0.99	0.13	-	33,33,33,33	0
4	MG	C	700	1/1	0.98	0.10	-	37,37,37,37	0
4	MG	D	700	1/1	0.98	0.09	-	36,36,36,36	0
5	CL	A	802	1/1	0.87	0.17	-	84,84,84,84	0
5	CL	C	802	1/1	0.98	0.11	-	69,69,69,69	0
4	MG	A	700	1/1	0.94	0.17	-	35,35,35,35	0
4	MG	C	800	1/1	0.95	0.05	-	76,76,76,76	0

## 6.5 Other polymers ⓘ

There are no such residues in this entry.