



Full wwPDB X-ray Structure Validation Report ⓘ

Feb 1, 2016 – 05:35 PM GMT

PDB ID : 4IRL
Title : X-ray structure of the CARD domain of zebrafish GBP-NLRP1 like protein
Authors : Jin, T.; Huang, M.; Smith, P.; Xiao, T.
Deposited on : 2013-01-15
Resolution : 1.47 Å(reported)

This is a Full wwPDB X-ray Structure Validation Report for a publicly released PDB entry.
We welcome your comments at validation@mail.wwpdb.org
A user guide is available at
<http://wwpdb.org/validation/2016/XrayValidationReportHelp>
with specific help available everywhere you see the ⓘ symbol.

The following versions of software and data (see [references ⓘ](#)) were used in the production of this report:

MolProbity : 4.02b-467
Mogul : 1.7 (RC4), CSD as536be (2015)
Xtriage (Phenix) : 1.9-1692
EDS : rb-20026688
Percentile statistics : 20151230.v01 (using entries in the PDB archive December 30th 2015)
Refmac : 5.8.0135
CCP4 : 6.5.0
Ideal geometry (proteins) : Engh & Huber (2001)
Ideal geometry (DNA, RNA) : Parkinson et al. (1996)
Validation Pipeline (wwPDB-VP) : trunk26865

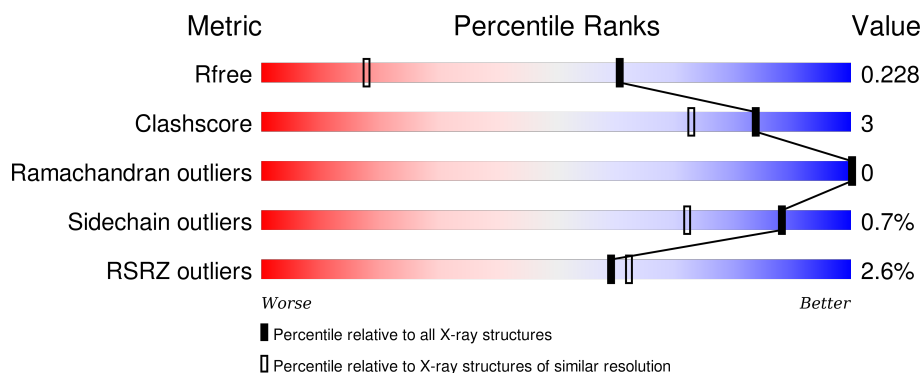
1 Overall quality at a glance

The following experimental techniques were used to determine the structure:

X-RAY DIFFRACTION

The reported resolution of this entry is 1.47 Å.

Percentile scores (ranging between 0-100) for global validation metrics of the entry are shown in the following graphic. The table shows the number of entries on which the scores are based.



Metric	Whole archive (#Entries)	Similar resolution (#Entries, resolution range(Å))
R_{free}	91344	3129 (1.50-1.46)
Clashscore	102246	3380 (1.50-1.46)
Ramachandran outliers	100387	3310 (1.50-1.46)
Sidechain outliers	100360	3308 (1.50-1.46)
RSRZ outliers	91569	3133 (1.50-1.46)

The table below summarises the geometric issues observed across the polymeric chains and their fit to the electron density. The red, orange, yellow and green segments on the lower bar indicate the fraction of residues that contain outliers for ≥ 3 , 2, 1 and 0 types of geometric quality criteria. A grey segment represents the fraction of residues that are not modelled. The numeric value for each fraction is indicated below the corresponding segment, with a dot representing fractions $\leq 5\%$. The upper red bar (where present) indicates the fraction of residues that have poor fit to the electron density. The numeric value is given above the bar.

Mol	Chain	Length	Quality of chain
1	A	476	<div> <div>2%</div> <div>90%</div> <div>7%</div> <div>.</div> </div>
1	B	476	<div> <div>2%</div> <div>92%</div> <div>6%</div> <div>.</div> </div>
1	C	476	<div> <div>3%</div> <div>90%</div> <div>7%</div> <div>.</div> </div>

The following table lists non-polymeric compounds, carbohydrate monomers and non-standard residues in protein, DNA, RNA chains that are outliers for geometric or electron-density-fit criteria:

Mol	Type	Chain	Res	Chirality	Geometry	Clashes	Electron density
3	MLI	A	502	-	-	-	X
3	MLI	B	502	-	-	-	X
4	EDO	A	503	-	-	X	X
4	EDO	B	503	-	-	-	X
4	EDO	B	504	-	-	X	X
4	EDO	B	505	-	-	-	X
5	ACT	A	504	-	-	-	X
5	ACT	B	506	-	-	-	X
6	NA	A	505	-	-	-	X
6	NA	B	507	-	-	-	X

2 Entry composition

There are 8 unique types of molecules in this entry. The entry contains 12984 atoms, of which 0 are hydrogens and 0 are deuteriums.

In the tables below, the ZeroOcc column contains the number of atoms modelled with zero occupancy, the AltConf column contains the number of residues with at least one atom in alternate conformation and the Trace column contains the number of residues modelled with at most 2 atoms.

- Molecule 1 is a protein called Maltose-binding periplasmic protein, Novel protein similar to vertebrate guanylate binding protein family.

Mol	Chain	Residues	Atoms					ZeroOcc	AltConf	Trace
1	A	462	Total	C	N	O	S	0	16	0
			3649	2346	601	690	12			
1	B	463	Total	C	N	O	S	0	7	0
			3614	2315	597	690	12			
1	C	462	Total	C	N	O	S	0	6	0
			3600	2304	599	685	12			

There are 96 discrepancies between the modelled and reference sequences:

Chain	Residue	Modelled	Actual	Comment	Reference
A	1	MET	-	EXPRESSION TAG	UNP P0AEX9
A	83	ALA	ASP	CONFLICT	UNP P0AEX9
A	84	ALA	LYS	CONFLICT	UNP P0AEX9
A	173	ALA	GLU	CONFLICT	UNP P0AEX9
A	174	ALA	ASN	CONFLICT	UNP P0AEX9
A	240	ALA	LYS	CONFLICT	UNP P0AEX9
A	360	ALA	-	LINKER	UNP B0V1H4
A	361	ALA	-	LINKER	UNP B0V1H4
A	362	LEU	-	LINKER	UNP B0V1H4
A	363	ALA	-	LINKER	UNP B0V1H4
A	364	ALA	-	LINKER	UNP B0V1H4
A	365	ALA	-	LINKER	UNP B0V1H4
A	366	GLN	-	LINKER	UNP B0V1H4
A	367	THR	-	LINKER	UNP B0V1H4
A	368	ASN	-	LINKER	UNP B0V1H4
A	369	ALA	-	LINKER	UNP B0V1H4
A	370	ALA	-	LINKER	UNP B0V1H4
A	371	ARG	-	LINKER	UNP B0V1H4
A	372	ALA	-	LINKER	UNP B0V1H4
A	373	ALA	-	LINKER	UNP B0V1H4
A	374	ALA	-	LINKER	UNP B0V1H4
A	375	ALA	-	LINKER	UNP B0V1H4

Continued on next page...

Continued from previous page...

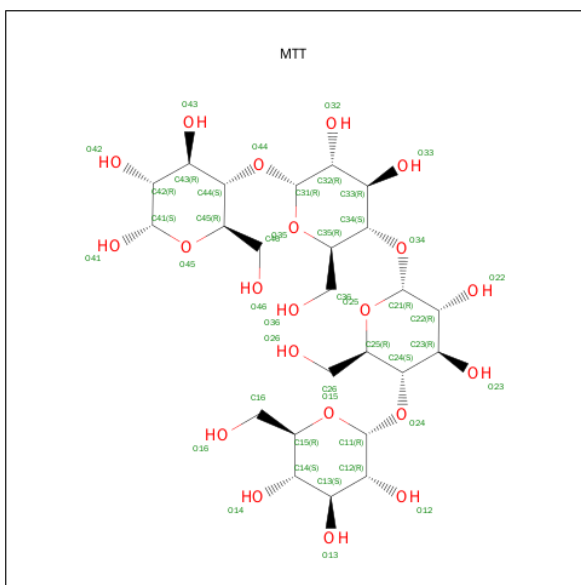
Chain	Residue	Modelled	Actual	Comment	Reference
A	412	SER	ASN	CONFLICT	UNP B0V1H4
A	416	TYR	ASN	CONFLICT	UNP B0V1H4
A	469	LEU	-	EXPRESSION TAG	UNP B0V1H4
A	470	GLU	-	EXPRESSION TAG	UNP B0V1H4
A	471	HIS	-	EXPRESSION TAG	UNP B0V1H4
A	472	HIS	-	EXPRESSION TAG	UNP B0V1H4
A	473	HIS	-	EXPRESSION TAG	UNP B0V1H4
A	474	HIS	-	EXPRESSION TAG	UNP B0V1H4
A	475	HIS	-	EXPRESSION TAG	UNP B0V1H4
A	476	HIS	-	EXPRESSION TAG	UNP B0V1H4
B	1	MET	-	EXPRESSION TAG	UNP P0AEX9
B	83	ALA	ASP	CONFLICT	UNP P0AEX9
B	84	ALA	LYS	CONFLICT	UNP P0AEX9
B	173	ALA	GLU	CONFLICT	UNP P0AEX9
B	174	ALA	ASN	CONFLICT	UNP P0AEX9
B	240	ALA	LYS	CONFLICT	UNP P0AEX9
B	360	ALA	-	LINKER	UNP B0V1H4
B	361	ALA	-	LINKER	UNP B0V1H4
B	362	LEU	-	LINKER	UNP B0V1H4
B	363	ALA	-	LINKER	UNP B0V1H4
B	364	ALA	-	LINKER	UNP B0V1H4
B	365	ALA	-	LINKER	UNP B0V1H4
B	366	GLN	-	LINKER	UNP B0V1H4
B	367	THR	-	LINKER	UNP B0V1H4
B	368	ASN	-	LINKER	UNP B0V1H4
B	369	ALA	-	LINKER	UNP B0V1H4
B	370	ALA	-	LINKER	UNP B0V1H4
B	371	ARG	-	LINKER	UNP B0V1H4
B	372	ALA	-	LINKER	UNP B0V1H4
B	373	ALA	-	LINKER	UNP B0V1H4
B	374	ALA	-	LINKER	UNP B0V1H4
B	375	ALA	-	LINKER	UNP B0V1H4
B	412	SER	ASN	CONFLICT	UNP B0V1H4
B	416	TYR	ASN	CONFLICT	UNP B0V1H4
B	469	LEU	-	EXPRESSION TAG	UNP B0V1H4
B	470	GLU	-	EXPRESSION TAG	UNP B0V1H4
B	471	HIS	-	EXPRESSION TAG	UNP B0V1H4
B	472	HIS	-	EXPRESSION TAG	UNP B0V1H4
B	473	HIS	-	EXPRESSION TAG	UNP B0V1H4
B	474	HIS	-	EXPRESSION TAG	UNP B0V1H4
B	475	HIS	-	EXPRESSION TAG	UNP B0V1H4
B	476	HIS	-	EXPRESSION TAG	UNP B0V1H4

Continued on next page...

Continued from previous page...

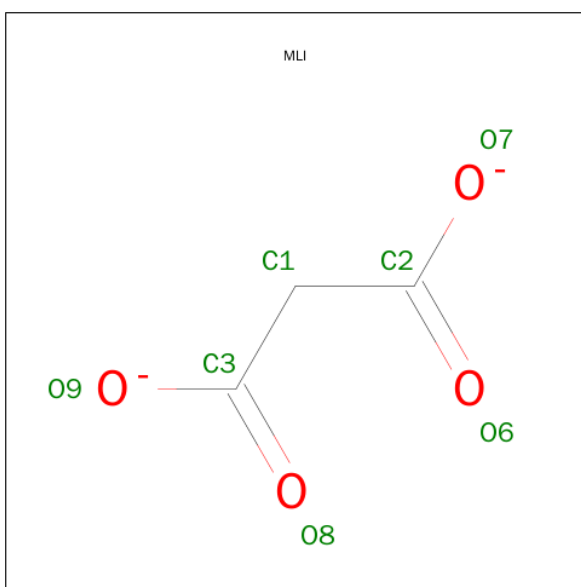
Chain	Residue	Modelled	Actual	Comment	Reference
C	1	MET	-	EXPRESSION TAG	UNP P0AEX9
C	83	ALA	ASP	CONFLICT	UNP P0AEX9
C	84	ALA	LYS	CONFLICT	UNP P0AEX9
C	173	ALA	GLU	CONFLICT	UNP P0AEX9
C	174	ALA	ASN	CONFLICT	UNP P0AEX9
C	240	ALA	LYS	CONFLICT	UNP P0AEX9
C	360	ALA	-	LINKER	UNP B0V1H4
C	361	ALA	-	LINKER	UNP B0V1H4
C	362	LEU	-	LINKER	UNP B0V1H4
C	363	ALA	-	LINKER	UNP B0V1H4
C	364	ALA	-	LINKER	UNP B0V1H4
C	365	ALA	-	LINKER	UNP B0V1H4
C	366	GLN	-	LINKER	UNP B0V1H4
C	367	THR	-	LINKER	UNP B0V1H4
C	368	ASN	-	LINKER	UNP B0V1H4
C	369	ALA	-	LINKER	UNP B0V1H4
C	370	ALA	-	LINKER	UNP B0V1H4
C	371	ARG	-	LINKER	UNP B0V1H4
C	372	ALA	-	LINKER	UNP B0V1H4
C	373	ALA	-	LINKER	UNP B0V1H4
C	374	ALA	-	LINKER	UNP B0V1H4
C	375	ALA	-	LINKER	UNP B0V1H4
C	412	SER	ASN	CONFLICT	UNP B0V1H4
C	416	TYR	ASN	CONFLICT	UNP B0V1H4
C	469	LEU	-	EXPRESSION TAG	UNP B0V1H4
C	470	GLU	-	EXPRESSION TAG	UNP B0V1H4
C	471	HIS	-	EXPRESSION TAG	UNP B0V1H4
C	472	HIS	-	EXPRESSION TAG	UNP B0V1H4
C	473	HIS	-	EXPRESSION TAG	UNP B0V1H4
C	474	HIS	-	EXPRESSION TAG	UNP B0V1H4
C	475	HIS	-	EXPRESSION TAG	UNP B0V1H4
C	476	HIS	-	EXPRESSION TAG	UNP B0V1H4

- Molecule 2 is MALTOTETRAOSE (three-letter code: MTT) (formula: C₂₄H₄₂O₂₁).



Mol	Chain	Residues	Atoms			ZeroOcc	AltConf
2	A	1	Total 45	C 24	O 21	0	0
2	B	1	Total 45	C 24	O 21	0	0
2	C	1	Total 45	C 24	O 21	0	0

- Molecule 3 is MALONATE ION (three-letter code: MLI) (formula: $\text{C}_3\text{H}_2\text{O}_4$).



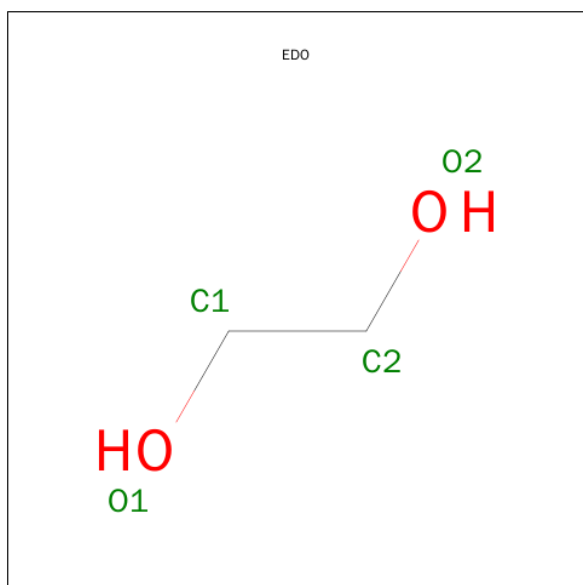
Mol	Chain	Residues	Atoms			ZeroOcc	AltConf
3	A	1	Total	C	O	0	0
			7	3	4		

Continued on next page...

Continued from previous page...

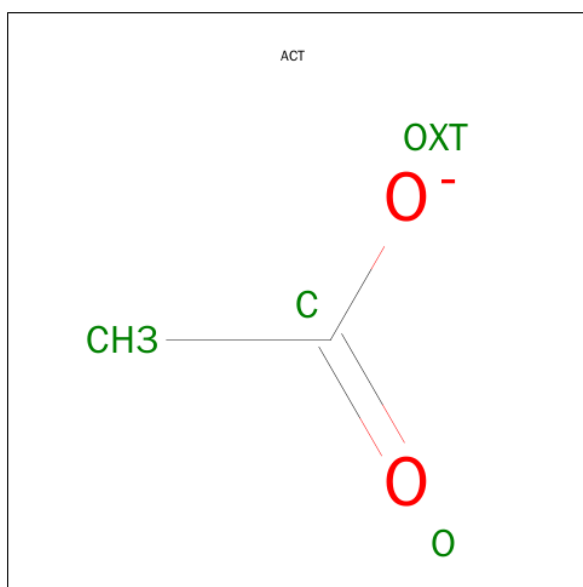
Mol	Chain	Residues	Atoms			ZeroOcc	AltConf
3	B	1	Total	C	O	0	0
			7	3	4		
3	C	1	Total	C	O	0	0
			7	3	4		

- Molecule 4 is 1,2-ETHANEDIOL (three-letter code: EDO) (formula: $C_2H_6O_2$).



Mol	Chain	Residues	Atoms			ZeroOcc	AltConf
4	A	1	Total	C	O	0	0
			4	2	2		
4	B	1	Total	C	O	0	0
			4	2	2		
4	B	1	Total	C	O	0	0
			4	2	2		
4	B	1	Total	C	O	0	0
			4	2	2		
4	C	1	Total	C	O	0	0
			4	2	2		

- Molecule 5 is ACETATE ION (three-letter code: ACT) (formula: $C_2H_3O_2$).

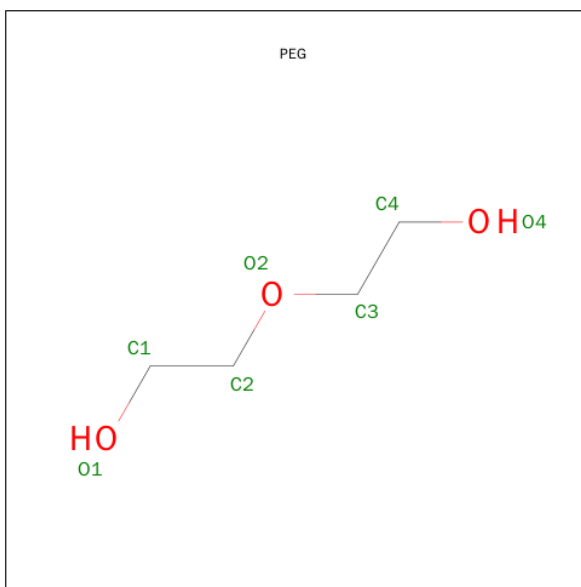


Mol	Chain	Residues	Atoms			ZeroOcc	AltConf
5	A	1	Total	C	O	0	0
			4	2	2		
5	B	1	Total	C	O	0	0
			4	2	2		
5	C	1	Total	C	O	0	0
			4	2	2		

- Molecule 6 is SODIUM ION (three-letter code: NA) (formula: Na).

Mol	Chain	Residues	Atoms		ZeroOcc	AltConf
6	B	2	Total	Na	0	0
			2	2		
6	A	1	Total	Na	0	0
			1	1		
6	C	1	Total	Na	0	0
			1	1		

- Molecule 7 is DI(HYDROXYETHYL)ETHER (three-letter code: PEG) (formula: C₄H₁₀O₃).



Mol	Chain	Residues	Atoms			ZeroOcc	AltConf
7	C	1	Total	C	O	0	0
			7	4	3		

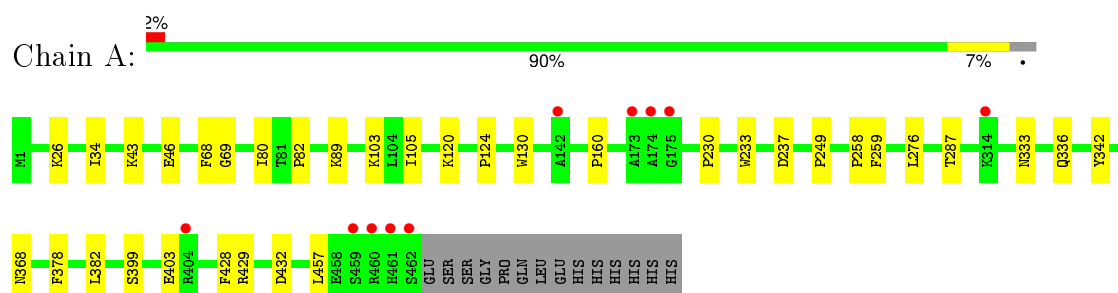
- Molecule 8 is water.

Mol	Chain	Residues	Atoms		ZeroOcc	AltConf
8	A	669	Total	O	0	0
			669	669		
8	B	626	Total	O	0	0
			626	626		
8	C	627	Total	O	0	0
			627	627		

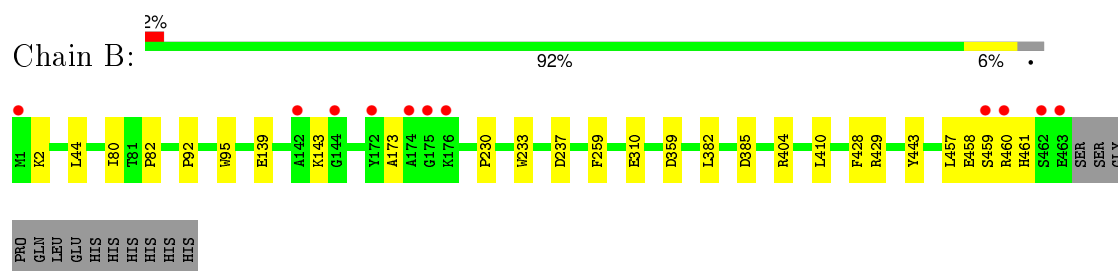
3 Residue-property plots [i](#)

These plots are drawn for all protein, RNA and DNA chains in the entry. The first graphic for a chain summarises the proportions of errors displayed in the second graphic. The second graphic shows the sequence view annotated by issues in geometry and electron density. Residues are color-coded according to the number of geometric quality criteria for which they contain at least one outlier: green = 0, yellow = 1, orange = 2 and red = 3 or more. A red dot above a residue indicates a poor fit to the electron density ($RSRZ > 2$). Stretches of 2 or more consecutive residues without any outlier are shown as a green connector. Residues present in the sample, but not in the model, are shown in grey.

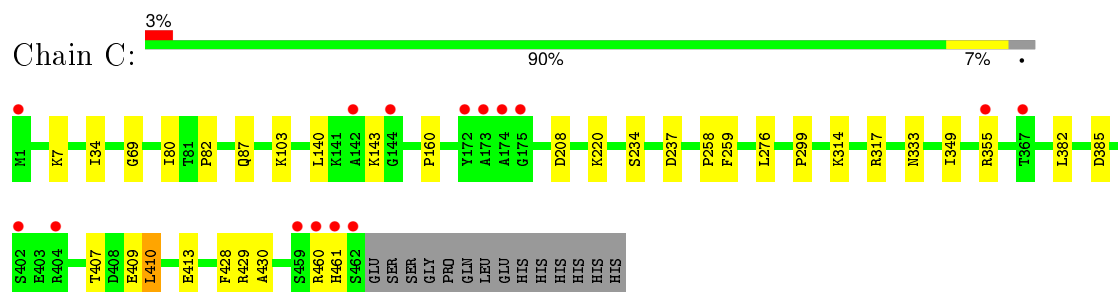
- Molecule 1: Maltose-binding periplasmic protein, Novel protein similar to vertebrate guanylate binding protein family



- Molecule 1: Maltose-binding periplasmic protein, Novel protein similar to vertebrate guanylate binding protein family



- Molecule 1: Maltose-binding periplasmic protein, Novel protein similar to vertebrate guanylate binding protein family



4 Data and refinement statistics

Property	Value	Source
Space group	P 21 21 21	Depositor
Cell constants a, b, c, α , β , γ	65.75Å 124.75Å 178.04Å 90.00° 90.00° 90.00°	Depositor
Resolution (Å)	29.43 – 1.47 29.43 – 1.47	Depositor EDS
% Data completeness (in resolution range)	95.6 (29.43-1.47) 95.6 (29.43-1.47)	Depositor EDS
R_{merge}	(Not available)	Depositor
R_{sym}	(Not available)	Depositor
$\langle I/\sigma(I) \rangle$ ¹	1.60 (at 1.47Å)	Xtriage
Refinement program	PHENIX (phenix.refine: dev_1217)	Depositor
R, R_{free}	0.188 , 0.224 0.195 , 0.228	Depositor DCC
R_{free} test set	11934 reflections (5.29%)	DCC
Wilson B-factor (Å ²)	14.2	Xtriage
Anisotropy	0.183	Xtriage
Bulk solvent k_{sol} (e/Å ³), B_{sol} (Å ²)	0.35 , 46.1	EDS
Estimated twinning fraction	No twinning to report.	Xtriage
L-test for twinning ²	$\langle L \rangle = 0.45$, $\langle L^2 \rangle = 0.27$	Xtriage
Outliers	1 of 237462 reflections (0.000%)	Xtriage
F_o, F_c correlation	0.96	EDS
Total number of atoms	12984	wwPDB-VP
Average B, all atoms (Å ²)	21.0	wwPDB-VP

Xtriage's analysis on translational NCS is as follows: *The analyses of the Patterson function reveals a significant off-origin peak that is 70.56 % of the origin peak, indicating pseudo translational symmetry. The chance of finding a peak of this or larger height randomly in a structure without pseudo translational symmetry is equal to 3.0569e-06. The detected translational NCS is most likely also responsible for the elevated intensity ratio.*

¹ Intensities estimated from amplitudes.

² Theoretical values of $\langle |L| \rangle$, $\langle L^2 \rangle$ for acentric reflections are 0.5, 0.375 respectively for untwinned datasets, and 0.333, 0.2 for perfectly twinned datasets.

5 Model quality [i](#)

5.1 Standard geometry [i](#)

Bond lengths and bond angles in the following residue types are not validated in this section: NA, MLI, EDO, MTT, ACT, PEG

The Z score for a bond length (or angle) is the number of standard deviations the observed value is removed from the expected value. A bond length (or angle) with $|Z| > 5$ is considered an outlier worth inspection. RMSZ is the root-mean-square of all Z scores of the bond lengths (or angles).

Mol	Chain	Bond lengths		Bond angles	
		RMSZ	$\# Z > 5$	RMSZ	$\# Z > 5$
1	A	0.50	0/3776	0.61	0/5118
1	B	0.50	0/3714	0.60	0/5036
1	C	0.48	0/3697	0.58	1/5011 (0.0%)
All	All	0.49	0/11187	0.60	1/15165 (0.0%)

There are no bond length outliers.

All (1) bond angle outliers are listed below:

Mol	Chain	Res	Type	Atoms	Z	Observed(°)	Ideal(°)
1	C	317	ARG	NE-CZ-NH2	-5.12	117.74	120.30

There are no chirality outliers.

There are no planarity outliers.

5.2 Too-close contacts [i](#)

In the following table, the Non-H and H(model) columns list the number of non-hydrogen atoms and hydrogen atoms in the chain respectively. The H(added) column lists the number of hydrogen atoms added and optimized by MolProbity. The Clashes column lists the number of clashes within the asymmetric unit, whereas Symm-Clashes lists symmetry related clashes.

Mol	Chain	Non-H	H(model)	H(added)	Clashes	Symm-Clashes
1	A	3649	0	3685	25	0
1	B	3614	0	3604	20	0
1	C	3600	0	3593	21	0
2	A	45	0	42	0	0
2	B	45	0	42	0	0
2	C	45	0	42	0	0
3	A	7	0	2	1	0

Continued on next page...

Continued from previous page...

Mol	Chain	Non-H	H(model)	H(added)	Clashes	Symm-Clashes
3	B	7	0	2	0	0
3	C	7	0	2	0	0
4	A	4	0	6	4	0
4	B	12	0	18	5	0
4	C	4	0	6	0	0
5	A	4	0	3	1	0
5	B	4	0	3	1	0
5	C	4	0	3	1	0
6	A	1	0	0	0	0
6	B	2	0	0	0	0
6	C	1	0	0	0	0
7	C	7	0	10	0	0
8	A	669	0	0	6	0
8	B	626	0	0	5	0
8	C	627	0	0	6	0
All	All	12984	0	11063	66	0

The all-atom clashscore is defined as the number of clashes found per 1000 atoms (including hydrogen atoms). The all-atom clashscore for this structure is 3.

All (66) close contacts within the same asymmetric unit are listed below, sorted by their clash magnitude.

Atom-1	Atom-2	Interatomic distance (Å)	Clash overlap (Å)
1:B:92:PRO:HA	4:B:504:EDO:H21	1.65	0.77
4:A:503:EDO:H12	8:A:776:HOH:O	1.89	0.73
1:B:385:ASP:OD2	1:B:460:ARG:NH2	2.22	0.72
1:B:382[B]:LEU:HD23	1:B:457:LEU:HB3	1.72	0.70
1:A:237:ASP:O	5:A:504:ACT:H1	1.93	0.69
1:A:382[B]:LEU:HD23	1:A:457:LEU:HB3	1.75	0.68
1:B:237:ASP:O	5:B:506:ACT:H1	1.94	0.68
1:A:336:GLN:NE2	8:A:1218:HOH:O	2.27	0.66
1:C:410:LEU:HD11	1:C:429:ARG:HB2	1.77	0.66
1:A:89:LYS:HD3	4:A:503:EDO:H21	1.78	0.65
1:C:314:LYS:NZ	8:C:1223:HOH:O	2.30	0.63
1:A:382[A]:LEU:HD13	1:A:457:LEU:HB3	1.81	0.63
1:A:26:LYS:NZ	8:A:1230:HOH:O	2.25	0.61
1:A:287:THR:HG22	4:A:503:EDO:H11	1.83	0.59
1:C:237:ASP:O	5:C:505:ACT:H1	2.02	0.59
1:B:461:HIS:ND1	8:B:848:HOH:O	2.32	0.58
1:C:385:ASP:OD2	1:C:460:ARG:NH2	2.36	0.58
1:A:68:PHE:HB3	1:A:105[B]:ILE:HD13	1.87	0.57

Continued on next page...

Continued from previous page...

Atom-1	Atom-2	Interatomic distance (Å)	Clash overlap (Å)
1:A:368[B]:ASN:ND2	8:A:679:HOH:O	2.37	0.57
1:C:7:LYS:NZ	8:C:1141:HOH:O	2.27	0.55
1:A:43:LYS:NZ	8:A:829:HOH:O	2.40	0.54
4:B:504:EDO:H22	8:C:1164:HOH:O	2.08	0.53
1:B:443:TYR:OH	1:B:458:GLU:OE1	2.22	0.53
1:C:7:LYS:HD2	8:C:1100:HOH:O	2.10	0.52
1:A:80:ILE:HG22	1:A:82:PRO:HD3	1.91	0.52
1:C:80:ILE:HG22	1:C:82:PRO:HD3	1.92	0.51
1:A:429:ARG:NH2	1:A:432:ASP:OD2	2.42	0.51
1:A:399:SER:O	1:A:403:GLU:HG2	2.12	0.49
1:B:92:PRO:CA	4:B:504:EDO:H21	2.39	0.49
1:A:287:THR:HG22	4:A:503:EDO:C1	2.43	0.49
1:B:95:TRP:CD1	4:B:504:EDO:H12	2.47	0.49
1:A:130:TRP:CD1	1:A:249:PRO:HB2	2.49	0.47
1:B:173:ALA:O	8:B:1080:HOH:O	2.20	0.47
1:A:103:LYS:HE3	1:B:404:ARG:NH2	2.29	0.47
1:A:46:GLU:OE2	1:A:342:TYR:OH	2.22	0.47
1:C:382:LEU:HD21	1:C:461:HIS:HB2	1.97	0.47
1:B:230:PRO:HA	1:B:233:TRP:CE2	2.51	0.46
1:C:234[A]:SER:OG	1:C:299:PRO:HD3	2.15	0.46
1:B:382[B]:LEU:CD2	1:B:457:LEU:HB3	2.42	0.45
1:A:34:ILE:HG13	1:A:276:LEU:HD13	1.97	0.45
1:B:359[A]:ASP:OD2	8:B:979:HOH:O	2.21	0.45
1:C:103:LYS:NZ	8:C:903:HOH:O	2.38	0.44
1:C:34:ILE:HG13	1:C:276:LEU:HD13	2.00	0.44
1:A:230:PRO:HA	1:A:233:TRP:CE2	2.53	0.43
1:A:69:GLY:HA3	1:A:333:ASN:O	2.17	0.43
1:C:413:GLU:OE1	8:C:942:HOH:O	2.21	0.43
1:A:120:LYS:HE2	3:A:502:MLI:O8	2.20	0.42
1:C:69:GLY:HA3	1:C:333:ASN:O	2.18	0.42
1:B:92:PRO:HB2	1:C:208[A]:ASP:OD2	2.20	0.42
1:C:349:ILE:CG2	1:C:355:ARG:HH21	2.32	0.42
1:A:378:PHE:CE2	1:A:382[A]:LEU:HD12	2.55	0.42
1:A:382[B]:LEU:CD2	1:A:457:LEU:HB3	2.45	0.42
1:B:410:LEU:HD21	1:B:429:ARG:HB2	2.02	0.42
1:C:160:PRO:HG3	1:C:258:PRO:HA	2.02	0.42
1:C:140:LEU:HA	1:C:143:LYS:HE3	2.02	0.42
1:C:410:LEU:HD13	1:C:430:ALA:HB2	2.02	0.41
1:B:80:ILE:HG22	1:B:82:PRO:HD3	2.01	0.41
1:C:407:THR:HB	1:C:409:GLU:OE1	2.21	0.41
1:B:44:LEU:C	1:B:44:LEU:HD12	2.41	0.41

Continued on next page...

Continued from previous page...

Atom-1	Atom-2	Interatomic distance (Å)	Clash overlap (Å)
1:B:310:GLU:OE2	1:C:220:LYS:NZ	2.48	0.41
1:A:124:PRO:HD2	8:A:1112:HOH:O	2.19	0.41
4:B:504:EDO:H11	8:B:1206:HOH:O	2.21	0.41
1:B:139:GLU:O	1:B:143:LYS:HE3	2.21	0.41
1:B:2:LYS:NZ	8:B:885:HOH:O	2.55	0.40
1:C:82:PRO:HG2	1:C:87:GLN:HG2	2.03	0.40
1:A:160:PRO:HG3	1:A:258:PRO:HA	2.03	0.40

There are no symmetry-related clashes.

5.3 Torsion angles [i](#)

5.3.1 Protein backbone [i](#)

In the following table, the Percentiles column shows the percent Ramachandran outliers of the chain as a percentile score with respect to all X-ray entries followed by that with respect to entries of similar resolution.

The Analysed column shows the number of residues for which the backbone conformation was analysed, and the total number of residues.

Mol	Chain	Analysed	Favoured	Allowed	Outliers	Percentiles	
1	A	476/476 (100%)	471 (99%)	5 (1%)	0	100	100
1	B	468/476 (98%)	461 (98%)	7 (2%)	0	100	100
1	C	466/476 (98%)	460 (99%)	6 (1%)	0	100	100
All	All	1410/1428 (99%)	1392 (99%)	18 (1%)	0	100	100

There are no Ramachandran outliers to report.

5.3.2 Protein sidechains [i](#)

In the following table, the Percentiles column shows the percent sidechain outliers of the chain as a percentile score with respect to all X-ray entries followed by that with respect to entries of similar resolution.

The Analysed column shows the number of residues for which the sidechain conformation was analysed, and the total number of residues.

Mol	Chain	Analysed	Rotameric	Outliers	Percentiles	
1	A	381/378 (101%)	379 (100%)	2 (0%)	92	80
1	B	373/378 (99%)	370 (99%)	3 (1%)	86	69
1	C	371/378 (98%)	368 (99%)	3 (1%)	86	69
All	All	1125/1134 (99%)	1117 (99%)	8 (1%)	88	72

All (8) residues with a non-rotameric sidechain are listed below:

Mol	Chain	Res	Type
1	A	259	PHE
1	A	428	PHE
1	B	259	PHE
1	B	428	PHE
1	B	459	SER
1	C	259	PHE
1	C	410	LEU
1	C	428	PHE

Some sidechains can be flipped to improve hydrogen bonding and reduce clashes. All (2) such sidechains are listed below:

Mol	Chain	Res	Type
1	C	125	ASN
1	C	326	GLN

5.3.3 RNA ⓘ

There are no RNA molecules in this entry.

5.4 Non-standard residues in protein, DNA, RNA chains ⓘ

There are no non-standard protein/DNA/RNA residues in this entry.

5.5 Carbohydrates ⓘ

There are no carbohydrates in this entry.

5.6 Ligand geometry ⓘ

Of 19 ligands modelled in this entry, 4 are monoatomic - leaving 15 for Mogul analysis.

In the following table, the Counts columns list the number of bonds (or angles) for which Mogul statistics could be retrieved, the number of bonds (or angles) that are observed in the model and the number of bonds (or angles) that are defined in the chemical component dictionary. The Link column lists molecule types, if any, to which the group is linked. The Z score for a bond length (or angle) is the number of standard deviations the observed value is removed from the expected value. A bond length (or angle) with $|Z| > 2$ is considered an outlier worth inspection. RMSZ is the root-mean-square of all Z scores of the bond lengths (or angles).

Mol	Type	Chain	Res	Link	Bond lengths			Bond angles		
					Counts	RMSZ	$\# Z > 2$	Counts	RMSZ	$\# Z > 2$
2	MTT	A	501	-	48,48,48	0.89	0	71,71,71	1.05	2 (2%)
3	MLI	A	502	-	0,6,6	0.00	-	0,7,7	0.00	-
4	EDO	A	503	-	3,3,3	0.46	0	2,2,2	0.37	0
5	ACT	A	504	-	1,3,3	1.28	0	0,3,3	0.00	-
2	MTT	B	501	-	48,48,48	0.86	0	71,71,71	0.98	5 (7%)
3	MLI	B	502	-	0,6,6	0.00	-	0,7,7	0.00	-
4	EDO	B	503	-	3,3,3	0.41	0	2,2,2	0.33	0
4	EDO	B	504	-	3,3,3	0.57	0	2,2,2	0.10	0
4	EDO	B	505	-	3,3,3	0.48	0	2,2,2	0.34	0
5	ACT	B	506	-	1,3,3	1.17	0	0,3,3	0.00	-
2	MTT	C	501	-	48,48,48	0.92	1 (2%)	71,71,71	1.38	8 (11%)
3	MLI	C	502	-	0,6,6	0.00	-	0,7,7	0.00	-
4	EDO	C	503	-	3,3,3	0.47	0	2,2,2	0.24	0
7	PEG	C	504	-	6,6,6	0.59	0	5,5,5	0.76	0
5	ACT	C	505	-	1,3,3	0.18	0	0,3,3	0.00	-

In the following table, the Chirals column lists the number of chiral outliers, the number of chiral centers analysed, the number of these observed in the model and the number defined in the chemical component dictionary. Similar counts are reported in the Torsion and Rings columns. '-' means no outliers of that kind were identified.

Mol	Type	Chain	Res	Link	Chirals	Torsions	Rings
2	MTT	A	501	-	-	0/20/100/100	0/4/4/4
3	MLI	A	502	-	-	0/0/4/4	0/0/0/0
4	EDO	A	503	-	-	0/1/1/1	0/0/0/0
5	ACT	A	504	-	-	0/0/0/0	0/0/0/0
2	MTT	B	501	-	-	0/20/100/100	0/4/4/4
3	MLI	B	502	-	-	0/0/4/4	0/0/0/0
4	EDO	B	503	-	-	0/1/1/1	0/0/0/0
4	EDO	B	504	-	-	0/1/1/1	0/0/0/0
4	EDO	B	505	-	-	0/1/1/1	0/0/0/0
5	ACT	B	506	-	-	0/0/0/0	0/0/0/0
2	MTT	C	501	-	-	0/20/100/100	0/4/4/4
3	MLI	C	502	-	-	0/0/4/4	0/0/0/0

Continued on next page...

Continued from previous page...

Mol	Type	Chain	Res	Link	Chirals	Torsions	Rings
4	EDO	C	503	-	-	0/1/1/1	0/0/0/0
7	PEG	C	504	-	-	0/4/4/4	0/0/0/0
5	ACT	C	505	-	-	0/0/0/0	0/0/0/0

All (1) bond length outliers are listed below:

Mol	Chain	Res	Type	Atoms	Z	Observed(Å)	Ideal(Å)
2	C	501	MTT	O43-C43	-2.24	1.37	1.43

All (15) bond angle outliers are listed below:

Mol	Chain	Res	Type	Atoms	Z	Observed(°)	Ideal(°)
2	C	501	MTT	C16-C15-C14	-2.57	106.67	113.02
2	B	501	MTT	O45-C45-C44	2.07	114.11	109.75
2	C	501	MTT	C21-O25-C25	2.10	117.82	113.75
2	B	501	MTT	O35-C35-C34	2.10	114.19	109.75
2	B	501	MTT	C11-C12-C13	2.11	114.13	109.97
2	C	501	MTT	C11-C12-C13	2.23	114.36	109.97
2	A	501	MTT	O35-C35-C34	2.32	114.65	109.75
2	B	501	MTT	O25-C25-C24	2.32	114.66	109.75
2	A	501	MTT	O25-C25-C24	2.33	114.67	109.75
2	B	501	MTT	C22-C23-C24	2.34	114.75	109.60
2	C	501	MTT	O45-C45-C44	2.61	115.26	109.75
2	C	501	MTT	C22-C23-C24	2.69	115.51	109.60
2	C	501	MTT	O35-C35-C34	3.28	116.67	109.75
2	C	501	MTT	O25-C25-C24	3.93	118.04	109.75
2	C	501	MTT	O15-C15-C14	4.02	117.23	109.68

There are no chirality outliers.

There are no torsion outliers.

There are no ring outliers.

6 monomers are involved in 13 short contacts:

Mol	Chain	Res	Type	Clashes	Symm-Clashes
3	A	502	MLI	1	0
4	A	503	EDO	4	0
5	A	504	ACT	1	0
4	B	504	EDO	5	0
5	B	506	ACT	1	0
5	C	505	ACT	1	0

5.7 Other polymers

There are no such residues in this entry.

5.8 Polymer linkage issues

There are no chain breaks in this entry.

6 Fit of model and data ⓘ

6.1 Protein, DNA and RNA chains ⓘ

In the following table, the column labelled ‘#RSRZ> 2’ contains the number (and percentage) of RSRZ outliers, followed by percent RSRZ outliers for the chain as percentile scores relative to all X-ray entries and entries of similar resolution. The OWAB column contains the minimum, median, 95th percentile and maximum values of the occupancy-weighted average B-factor per residue. The column labelled ‘Q< 0.9’ lists the number of (and percentage) of residues with an average occupancy less than 0.9.

Mol	Chain	Analysed	<RSRZ>	#RSRZ>2	OWAB(Å ²)	Q<0.9
1	A	462/476 (97%)	-0.11	10 (2%) 65 68	9, 16, 31, 56	0
1	B	463/476 (97%)	-0.09	11 (2%) 62 65	11, 17, 31, 75	0
1	C	462/476 (97%)	0.02	15 (3%) 51 53	11, 19, 36, 65	0
All	All	1387/1428 (97%)	-0.06	36 (2%) 59 62	9, 17, 34, 75	0

All (36) RSRZ outliers are listed below:

Mol	Chain	Res	Type	RSRZ
1	B	462	SER	8.0
1	C	462	SER	5.1
1	B	463	GLU	4.9
1	B	174	ALA	4.9
1	C	172	TYR	4.3
1	C	174	ALA	4.2
1	B	172	TYR	4.1
1	B	1	MET	4.1
1	A	459	SER	3.8
1	C	1	MET	3.6
1	A	462	SER	3.5
1	C	173	ALA	3.5
1	C	175	GLY	3.4
1	C	404	ARG	3.4
1	C	461	HIS	3.2
1	A	460	ARG	3.2
1	C	355	ARG	3.1
1	C	460	ARG	3.0
1	A	174	ALA	2.9
1	A	142	ALA	2.9
1	C	142	ALA	2.9
1	A	175	GLY	2.9
1	B	142	ALA	2.9

Continued on next page...

Continued from previous page...

Mol	Chain	Res	Type	RSRZ
1	A	404	ARG	2.7
1	B	460	ARG	2.7
1	C	144	GLY	2.6
1	B	144	GLY	2.5
1	C	402	SER	2.4
1	A	173	ALA	2.4
1	B	459	SER	2.3
1	C	367	THR	2.3
1	A	461	HIS	2.2
1	B	175	GLY	2.2
1	C	459	SER	2.1
1	B	176	LYS	2.1
1	A	314	LYS	2.0

6.2 Non-standard residues in protein, DNA, RNA chains [i](#)

There are no non-standard protein/DNA/RNA residues in this entry.

6.3 Carbohydrates [i](#)

There are no carbohydrates in this entry.

6.4 Ligands [i](#)

In the following table, the Atoms column lists the number of modelled atoms in the group and the number defined in the chemical component dictionary. LLDF column lists the quality of electron density of the group with respect to its neighbouring residues in protein, DNA or RNA chains. The B-factors column lists the minimum, median, 95th percentile and maximum values of B factors of atoms in the group. The column labelled 'Q< 0.9' lists the number of atoms with occupancy less than 0.9.

Mol	Type	Chain	Res	Atoms	RSCC	RSR	LLDF	B-factors(Å ²)	Q<0.9
4	EDO	A	503	4/4	0.81	0.24	13.23	26,29,31,42	0
3	MLI	A	502	7/7	0.94	0.18	11.98	18,23,25,30	0
3	MLI	B	502	7/7	0.91	0.17	10.25	18,24,32,38	0
6	NA	B	507	1/1	0.96	0.11	5.73	20,20,20,20	0
4	EDO	B	503	4/4	0.79	0.13	5.69	28,28,35,36	0
4	EDO	B	504	4/4	0.88	0.17	5.27	25,29,31,34	0
6	NA	A	505	1/1	0.97	0.16	3.84	19,19,19,19	0
5	ACT	B	506	4/4	0.94	0.11	3.48	8,15,15,18	0

Continued on next page...

Continued from previous page...

Mol	Type	Chain	Res	Atoms	RSCC	RSR	LLDF	B-factors(\AA^2)	Q<0.9
5	ACT	A	504	4/4	0.92	0.11	2.79	11,16,16,21	0
4	EDO	B	505	4/4	0.88	0.11	2.52	24,30,36,40	0
2	MTT	C	501	45/45	0.89	0.12	1.78	13,18,46,48	0
6	NA	C	506	1/1	0.91	0.10	1.52	25,25,25,25	0
2	MTT	A	501	45/45	0.93	0.09	1.36	7,13,36,38	0
2	MTT	B	501	45/45	0.92	0.10	1.31	9,14,30,33	0
3	MLI	C	502	7/7	0.94	0.13	1.15	19,25,31,36	0
4	EDO	C	503	4/4	0.81	0.16	1.12	38,42,46,48	0
7	PEG	C	504	7/7	0.83	0.11	0.44	34,41,49,52	0
5	ACT	C	505	4/4	0.93	0.11	-0.08	16,17,20,23	0
6	NA	B	508	1/1	0.88	0.41	-	44,44,44,44	0

6.5 Other polymers [i](#)

There are no such residues in this entry.