



Full wwPDB X-ray Structure Validation Report ⓘ

Feb 1, 2016 – 05:34 PM GMT

PDB ID : 4IRP
Title : Crystal structure of catalytic domain of human beta1,4-galactosyltransferase-7 in open conformation with manganeses and UDP
Authors : Tsutsui, Y.; Ramakrishnan, B.; Qasba, P.K.
Deposited on : 2013-01-15
Resolution : 2.10 Å(reported)

This is a Full wwPDB X-ray Structure Validation Report for a publicly released PDB entry.
We welcome your comments at validation@mail.wwpdb.org
A user guide is available at
<http://wwpdb.org/validation/2016/XrayValidationReportHelp>
with specific help available everywhere you see the ⓘ symbol.

The following versions of software and data (see [references ⓘ](#)) were used in the production of this report:

MolProbity : 4.02b-467
Mogul : 1.7 (RC4), CSD as536be (2015)
Xtriage (Phenix) : 1.9-1692
EDS : rb-20026688
Percentile statistics : 20151230.v01 (using entries in the PDB archive December 30th 2015)
Refmac : 5.8.0135
CCP4 : 6.5.0
Ideal geometry (proteins) : Engh & Huber (2001)
Ideal geometry (DNA, RNA) : Parkinson et al. (1996)
Validation Pipeline (wwPDB-VP) : trunk26865

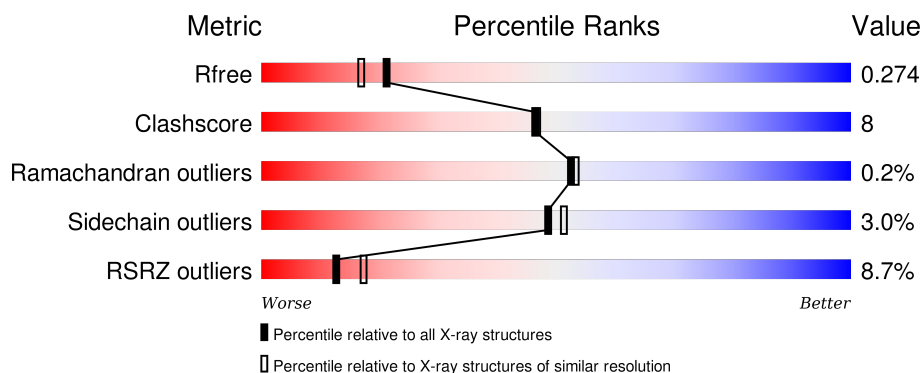
1 Overall quality at a glance

The following experimental techniques were used to determine the structure:

X-RAY DIFFRACTION

The reported resolution of this entry is 2.10 Å.

Percentile scores (ranging between 0-100) for global validation metrics of the entry are shown in the following graphic. The table shows the number of entries on which the scores are based.



Metric	Whole archive (#Entries)	Similar resolution (#Entries, resolution range(Å))
R_{free}	91344	3939 (2.10-2.10)
Clashscore	102246	4460 (2.10-2.10)
Ramachandran outliers	100387	4413 (2.10-2.10)
Sidechain outliers	100360	4414 (2.10-2.10)
RSRZ outliers	91569	3948 (2.10-2.10)

The table below summarises the geometric issues observed across the polymeric chains and their fit to the electron density. The red, orange, yellow and green segments on the lower bar indicate the fraction of residues that contain outliers for ≥ 3 , 2, 1 and 0 types of geometric quality criteria. A grey segment represents the fraction of residues that are not modelled. The numeric value for each fraction is indicated below the corresponding segment, with a dot representing fractions $\leq 5\%$. The upper red bar (where present) indicates the fraction of residues that have poor fit to the electron density. The numeric value is given above the bar.

Mol	Chain	Length	Quality of chain
1	A	251	<div> <div>9%</div> <div>75%</div> <div>18%</div> <div>8%</div> </div>
1	B	251	<div> <div>7%</div> <div>72%</div> <div>17%</div> <div>10%</div> </div>

The following table lists non-polymeric compounds, carbohydrate monomers and non-standard residues in protein, DNA, RNA chains that are outliers for geometric or electron-density-fit criteria:

Mol	Type	Chain	Res	Chirality	Geometry	Clashes	Electron density
2	UDP	A	401	-	-	-	X
2	UDP	B	401	-	-	-	X
4	ACT	B	403	-	-	-	X
4	ACT	B	404	-	-	-	X

2 Entry composition

There are 6 unique types of molecules in this entry. The entry contains 4288 atoms, of which 0 are hydrogens and 0 are deuteriums.

In the tables below, the ZeroOcc column contains the number of atoms modelled with zero occupancy, the AltConf column contains the number of residues with at least one atom in alternate conformation and the Trace column contains the number of residues modelled with at most 2 atoms.

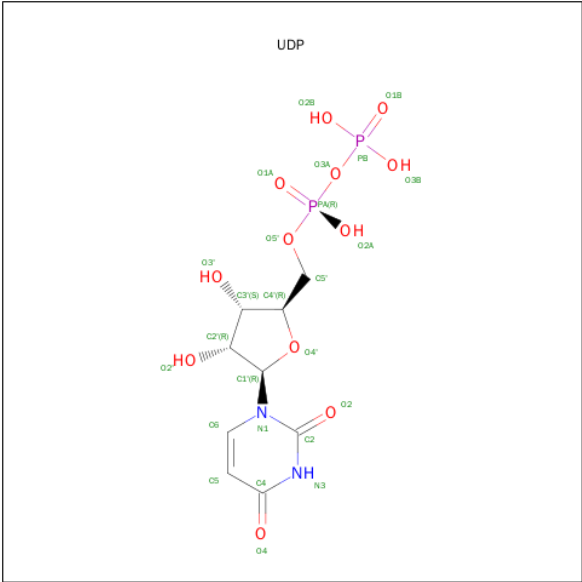
- Molecule 1 is a protein called Beta-1,4-galactosyltransferase 7.

Mol	Chain	Residues	Atoms					ZeroOcc	AltConf	Trace
1	A	232	Total	C	N	O	S	0	15	0
			2000	1290	360	342	8			
1	B	227	Total	C	N	O	S	0	7	0
			1913	1230	348	327	8			

There are 8 discrepancies between the modelled and reference sequences:

Chain	Residue	Modelled	Actual	Comment	Reference
A	77	GLY	-	EXPRESSION TAG	UNP Q9UBV7
A	78	SER	-	EXPRESSION TAG	UNP Q9UBV7
A	79	ASP	-	EXPRESSION TAG	UNP Q9UBV7
A	80	ILE	-	EXPRESSION TAG	UNP Q9UBV7
B	77	GLY	-	EXPRESSION TAG	UNP Q9UBV7
B	78	SER	-	EXPRESSION TAG	UNP Q9UBV7
B	79	ASP	-	EXPRESSION TAG	UNP Q9UBV7
B	80	ILE	-	EXPRESSION TAG	UNP Q9UBV7

- Molecule 2 is URIDINE-5'-DIPHOSPHATE (three-letter code: UDP) (formula: C₉H₁₄N₂O₁₂P₂).



Mol	Chain	Residues	Atoms					ZeroOcc	AltConf
2	A	1	Total	C	N	O	P	0	0
			25	9	2	12	2		
2	B	1	Total	C	N	O	P	0	0
			25	9	2	12	2		

- Molecule 3 is MANGANESE (II) ION (three-letter code: MN) (formula: Mn).

Mol	Chain	Residues	Atoms		ZeroOcc	AltConf
3	B	1	Total	Mn	0	0
			1	1		
3	A	1	Total	Mn	0	0
			1	1		

- Molecule 4 is ACETATE ION (three-letter code: ACT) (formula: C₂H₃O₂).



Mol	Chain	Residues	Atoms			ZeroOcc	AltConf
4	A	1	Total	C	O	0	0
			4	2	2		
4	A	1	Total	C	O	0	0
			4	2	2		
4	A	1	Total	C	O	0	0
			4	2	2		
4	A	1	Total	C	O	0	0
			4	2	2		
4	B	1	Total	C	O	0	0
			4	2	2		
4	B	1	Total	C	O	0	0
			4	2	2		

- Molecule 5 is IMIDAZOLE (three-letter code: IMD) (formula: C₃H₅N₂).



Mol	Chain	Residues	Atoms			ZeroOcc	AltConf
5	A	1	Total	C	N	0	0
			5	3	2		

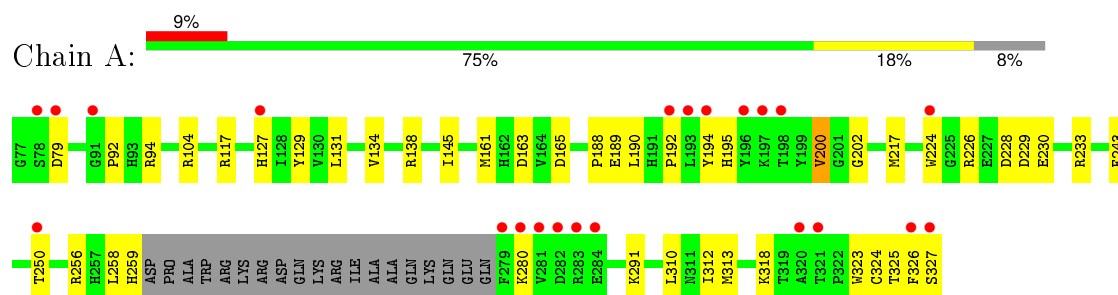
- Molecule 6 is water.

Mol	Chain	Residues	Atoms		ZeroOcc	AltConf
6	A	154	Total	O	0	0
			154	154		
6	B	140	Total	O	0	0
			140	140		

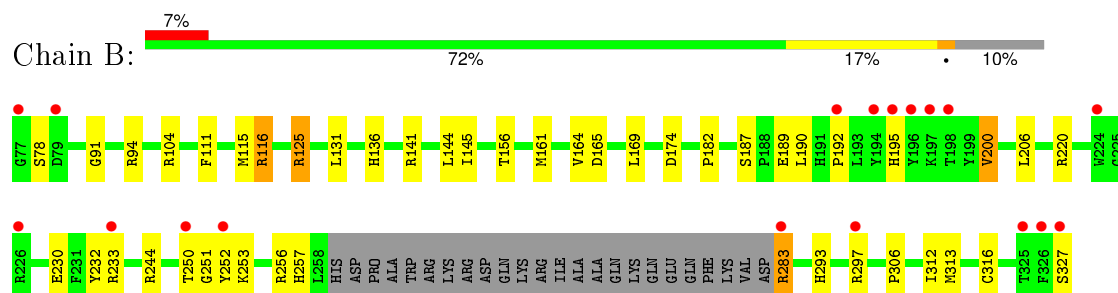
3 Residue-property plots [i](#)

These plots are drawn for all protein, RNA and DNA chains in the entry. The first graphic for a chain summarises the proportions of errors displayed in the second graphic. The second graphic shows the sequence view annotated by issues in geometry and electron density. Residues are color-coded according to the number of geometric quality criteria for which they contain at least one outlier: green = 0, yellow = 1, orange = 2 and red = 3 or more. A red dot above a residue indicates a poor fit to the electron density ($\text{RSRZ} > 2$). Stretches of 2 or more consecutive residues without any outlier are shown as a green connector. Residues present in the sample, but not in the model, are shown in grey.

• Molecule 1: Beta-1,4-galactosyltransferase 7



• Molecule 1: Beta-1,4-galactosyltransferase 7



4 Data and refinement statistics

Property	Value	Source
Space group	P 41 21 2	Depositor
Cell constants a, b, c, α , β , γ	125.19Å 125.19Å 87.33Å 90.00° 90.00° 90.00°	Depositor
Resolution (Å)	44.26 – 2.10 44.26 – 2.04	Depositor EDS
% Data completeness (in resolution range)	99.2 (44.26-2.10) 99.2 (44.26-2.04)	Depositor EDS
R_{merge}	(Not available)	Depositor
R_{sym}	0.06	Depositor
$\langle I/\sigma(I) \rangle$ ¹	2.78 (at 2.05Å)	Xtriage
Refinement program	PHENIX (phenix.refine: 1.8.2_1309)	Depositor
R, R_{free}	0.218 , 0.275 0.217 , 0.274	Depositor DCC
R_{free} test set	2081 reflections (5.11%)	DCC
Wilson B-factor (Å ²)	31.7	Xtriage
Anisotropy	0.026	Xtriage
Bulk solvent k_{sol} (e/Å ³), B_{sol} (Å ²)	0.33 , 55.8	EDS
Estimated twinning fraction	No twinning to report.	Xtriage
L-test for twinning ²	$\langle L \rangle = 0.52$, $\langle L^2 \rangle = 0.36$	Xtriage
Outliers	10 of 44196 reflections (0.023%)	Xtriage
F_o, F_c correlation	0.95	EDS
Total number of atoms	4288	wwPDB-VP
Average B, all atoms (Å ²)	27.0	wwPDB-VP

Xtriage's analysis on translational NCS is as follows: *The analyses of the Patterson function reveals a significant off-origin peak that is 62.50 % of the origin peak, indicating pseudo translational symmetry. The chance of finding a peak of this or larger height randomly in a structure without pseudo translational symmetry is equal to 1.1164e-05. The detected translational NCS is most likely also responsible for the elevated intensity ratio.*

¹Intensities estimated from amplitudes.

²Theoretical values of $\langle |L| \rangle$, $\langle L^2 \rangle$ for acentric reflections are 0.5, 0.375 respectively for untwinned datasets, and 0.333, 0.2 for perfectly twinned datasets.

5 Model quality

5.1 Standard geometry

Bond lengths and bond angles in the following residue types are not validated in this section: UDP, MN, IMD, ACT

The Z score for a bond length (or angle) is the number of standard deviations the observed value is removed from the expected value. A bond length (or angle) with $|Z| > 5$ is considered an outlier worth inspection. RMSZ is the root-mean-square of all Z scores of the bond lengths (or angles).

Mol	Chain	Bond lengths		Bond angles	
		RMSZ	$\# Z > 5$	RMSZ	$\# Z > 5$
1	A	1.00	1/2094 (0.0%)	0.91	2/2830 (0.1%)
1	B	1.07	2/1991 (0.1%)	1.02	6/2693 (0.2%)
All	All	1.03	3/4085 (0.1%)	0.97	8/5523 (0.1%)

All (3) bond length outliers are listed below:

Mol	Chain	Res	Type	Atoms	Z	Observed(Å)	Ideal(Å)
1	A	129	TYR	CE2-CZ	5.95	1.46	1.38
1	B	164	VAL	CB-CG2	5.38	1.64	1.52
1	B	316	CYS	CB-SG	5.08	1.90	1.82

All (8) bond angle outliers are listed below:

Mol	Chain	Res	Type	Atoms	Z	Observed(°)	Ideal(°)
1	B	116	ARG	NE-CZ-NH2	-9.64	115.48	120.30
1	B	116	ARG	NE-CZ-NH1	7.39	124.00	120.30
1	B	174	ASP	CB-CG-OD1	6.63	124.27	118.30
1	B	125	ARG	NE-CZ-NH2	-5.77	117.42	120.30
1	A	250	THR	C-N-CA	-5.75	110.22	122.30
1	B	250	THR	C-N-CA	-5.66	110.42	122.30
1	B	174	ASP	CB-CG-OD2	-5.50	113.35	118.30
1	A	217	MET	CG-SD-CE	-5.22	91.84	100.20

There are no chirality outliers.

There are no planarity outliers.

5.2 Too-close contacts ⓘ

In the following table, the Non-H and H(model) columns list the number of non-hydrogen atoms and hydrogen atoms in the chain respectively. The H(added) column lists the number of hydrogen atoms added and optimized by MolProbity. The Clashes column lists the number of clashes within the asymmetric unit, whereas Symm-Clashes lists symmetry related clashes.

Mol	Chain	Non-H	H(model)	H(added)	Clashes	Symm-Clashes
1	A	2000	0	1961	30	0
1	B	1913	0	1883	29	0
2	A	25	0	11	2	0
2	B	25	0	11	0	0
3	A	1	0	0	0	0
3	B	1	0	0	0	0
4	A	16	0	12	0	0
4	B	8	0	6	0	0
5	A	5	0	5	3	0
6	A	154	0	0	5	0
6	B	140	0	0	4	0
All	All	4288	0	3889	60	0

The all-atom clashscore is defined as the number of clashes found per 1000 atoms (including hydrogen atoms). The all-atom clashscore for this structure is 8.

All (60) close contacts within the same asymmetric unit are listed below, sorted by their clash magnitude.

Atom-1	Atom-2	Interatomic distance (Å)	Clash overlap (Å)
1:B:144:LEU:HD23	1:B:312[B]:ILE:HD11	1.68	0.74
1:A:138:ARG:HG3	1:A:327[B]:SER:HB2	1.72	0.72
1:A:104[A]:ARG:NH1	6:A:585:HOH:O	2.23	0.72
1:A:224[B]:TRP:HH2	1:A:326:PHE:HB2	1.55	0.71
1:B:104[B]:ARG:NH1	1:B:165:ASP:OD2	2.28	0.67
1:A:243:PHE:CD1	5:A:407:IMD:H5	2.30	0.67
1:A:226:ARG:HD3	1:A:229:ASP:OD2	1.95	0.66
1:A:138:ARG:HG3	1:A:327[A]:SER:HB3	1.79	0.63
1:B:182:PRO:HG3	1:B:206[B]:LEU:CD1	2.31	0.61
1:B:220:ARG:NH1	1:B:283:ARG:HG2	2.16	0.60
1:A:200:VAL:HG13	1:A:228:ASP:HB3	1.84	0.59
5:A:407:IMD:N3	6:A:605:HOH:O	2.32	0.59
1:B:182:PRO:HG3	1:B:206[B]:LEU:HD13	1.84	0.59
1:B:189:GLU:HG3	1:B:190:LEU:HG	1.85	0.58
1:B:141:ARG:NH1	6:B:537:HOH:O	2.36	0.58
1:B:220:ARG:NH2	1:B:283:ARG:HE	2.02	0.57

Continued on next page...

Continued from previous page...

Atom-1	Atom-2	Interatomic distance (Å)	Clash overlap (Å)
1:A:224[B]:TRP:CZ3	1:A:323:TRP:HB2	2.41	0.56
1:A:163:ASP:OD2	1:A:202:GLY:HA2	2.07	0.54
1:B:187:SER:HB2	1:B:244:ARG:HD3	1.90	0.54
1:B:230:GLU:HG2	1:B:233[B]:ARG:NH1	2.23	0.53
1:B:116:ARG:HD3	1:B:306:PRO:HD2	1.90	0.53
1:B:91:GLY:O	1:B:125:ARG:NE	2.39	0.52
1:B:145:ILE:HD13	1:B:161[B]:MET:HE3	1.92	0.52
1:B:220:ARG:NH2	1:B:220:ARG:HB2	2.25	0.52
1:B:136:HIS:HB2	6:B:532:HOH:O	2.11	0.51
1:A:145[A]:ILE:HD13	1:A:161:MET:HE3	1.93	0.50
1:B:256:ARG:NH1	6:B:570:HOH:O	2.38	0.50
1:A:256[B]:ARG:NH2	6:A:547:HOH:O	2.37	0.48
1:A:165:ASP:HA	1:A:258:LEU:HD12	1.95	0.48
1:A:138:ARG:CG	1:A:327[A]:SER:HB3	2.45	0.47
1:B:195:HIS:CE1	1:B:252:TYR:CZ	3.02	0.47
1:A:224[B]:TRP:HZ3	1:A:323:TRP:O	1.97	0.46
1:A:189:GLU:HG3	1:A:190:LEU:HG	1.96	0.46
1:A:230:GLU:OE2	1:A:233[B]:ARG:NH2	2.49	0.46
1:B:327:SER:O	1:B:327:SER:OG	2.28	0.46
1:A:310[B]:LEU:HB3	1:A:312[B]:ILE:HD11	1.97	0.46
1:A:194:TYR:O	1:A:195:HIS:ND1	2.48	0.46
1:B:94:ARG:HG2	1:B:156:THR:HG22	1.98	0.46
1:B:200:VAL:HG21	1:B:232:TYR:HB2	1.97	0.46
1:A:163:ASP:HB3	2:A:401:UDP:O3'	2.16	0.45
1:B:293:HIS:CE1	1:B:313:MET:HG3	2.51	0.45
1:A:324:CYS:SG	1:A:325:THR:N	2.90	0.45
1:A:243:PHE:CE1	5:A:407:IMD:H5	2.52	0.45
1:A:117[A]:ARG:NE	6:A:619:HOH:O	2.49	0.45
1:A:134:VAL:HG23	1:A:313:MET:SD	2.57	0.45
1:A:94:ARG:HD3	1:A:127[C]:HIS:CE1	2.52	0.44
1:B:251:GLY:C	1:B:253:LYS:H	2.19	0.44
1:A:188:PRO:HB3	1:A:195:HIS:HA	2.01	0.43
1:B:192:PRO:HG2	1:B:257:HIS:HB2	2.01	0.43
1:A:138:ARG:CG	1:A:327[B]:SER:HB2	2.47	0.41
1:A:163:ASP:OD1	2:A:401:UDP:H4'	2.20	0.41
1:A:192:PRO:HD3	6:A:557:HOH:O	2.21	0.41
1:B:182:PRO:HG3	1:B:206[B]:LEU:HD11	1.99	0.41
1:B:220:ARG:CZ	1:B:283:ARG:HE	2.34	0.41
1:B:111:PHE:CZ	1:B:115:MET:HG3	2.55	0.41
1:B:297[A]:ARG:NH2	6:B:516:HOH:O	2.54	0.40
1:B:220:ARG:CZ	1:B:283:ARG:HG2	2.51	0.40

Continued on next page...

Continued from previous page...

Atom-1	Atom-2	Interatomic distance (Å)	Clash overlap (Å)
1:A:256[A]:ARG:HD2	1:A:258:LEU:CD2	2.51	0.40

There are no symmetry-related clashes.

5.3 Torsion angles [i](#)

5.3.1 Protein backbone [i](#)

In the following table, the Percentiles column shows the percent Ramachandran outliers of the chain as a percentile score with respect to all X-ray entries followed by that with respect to entries of similar resolution.

The Analysed column shows the number of residues for which the backbone conformation was analysed, and the total number of residues.

Mol	Chain	Analysed	Favoured	Allowed	Outliers	Percentiles	
1	A	241/251 (96%)	231 (96%)	9 (4%)	1 (0%)	39	37
1	B	231/251 (92%)	221 (96%)	10 (4%)	0	100	100
All	All	472/502 (94%)	452 (96%)	19 (4%)	1 (0%)	52	53

All (1) Ramachandran outliers are listed below:

Mol	Chain	Res	Type
1	A	92	PRO

5.3.2 Protein sidechains [i](#)

In the following table, the Percentiles column shows the percent sidechain outliers of the chain as a percentile score with respect to all X-ray entries followed by that with respect to entries of similar resolution.

The Analysed column shows the number of residues for which the sidechain conformation was analysed, and the total number of residues.

Mol	Chain	Analysed	Rotameric	Outliers	Percentiles	
1	A	216/218 (99%)	208 (96%)	8 (4%)	41	41
1	B	205/218 (94%)	200 (98%)	5 (2%)	57	61
All	All	421/436 (97%)	408 (97%)	13 (3%)	48	50

All (13) residues with a non-rotameric sidechain are listed below:

Mol	Chain	Res	Type
1	A	79[A]	ASP
1	A	79[B]	ASP
1	A	131	LEU
1	A	200	VAL
1	A	259	HIS
1	A	280	LYS
1	A	291	LYS
1	A	318	LYS
1	B	78	SER
1	B	131	LEU
1	B	169	LEU
1	B	200	VAL
1	B	283	ARG

Some sidechains can be flipped to improve hydrogen bonding and reduce clashes. There are no such sidechains identified.

5.3.3 RNA [i](#)

There are no RNA molecules in this entry.

5.4 Non-standard residues in protein, DNA, RNA chains [i](#)

There are no non-standard protein/DNA/RNA residues in this entry.

5.5 Carbohydrates [i](#)

There are no carbohydrates in this entry.

5.6 Ligand geometry [i](#)

Of 11 ligands modelled in this entry, 2 are monoatomic - leaving 9 for Mogul analysis.

In the following table, the Counts columns list the number of bonds (or angles) for which Mogul statistics could be retrieved, the number of bonds (or angles) that are observed in the model and the number of bonds (or angles) that are defined in the chemical component dictionary. The Link column lists molecule types, if any, to which the group is linked. The Z score for a bond length (or angle) is the number of standard deviations the observed value is removed from the expected value. A bond length (or angle) with $|Z| > 2$ is considered an outlier worth inspection. RMSZ is the root-mean-square of all Z scores of the bond lengths (or angles).

Mol	Type	Chain	Res	Link	Bond lengths			Bond angles		
					Counts	RMSZ	# Z > 2	Counts	RMSZ	# Z > 2
2	UDP	A	401	3	18,26,26	1.26	2 (11%)	26,40,40	1.86	4 (15%)
4	ACT	A	403	-	1,3,3	2.83	1 (100%)	0,3,3	0.00	-
4	ACT	A	404	-	1,3,3	2.54	1 (100%)	0,3,3	0.00	-
4	ACT	A	405	-	1,3,3	3.58	1 (100%)	0,3,3	0.00	-
4	ACT	A	406	-	1,3,3	3.49	1 (100%)	0,3,3	0.00	-
5	IMD	A	407	-	3,5,5	0.53	0	4,5,5	0.93	0
2	UDP	B	401	3	18,26,26	1.33	1 (5%)	26,40,40	1.57	2 (7%)
4	ACT	B	403	-	1,3,3	2.32	1 (100%)	0,3,3	0.00	-
4	ACT	B	404	-	1,3,3	1.69	0	0,3,3	0.00	-

In the following table, the Chirals column lists the number of chiral outliers, the number of chiral centers analysed, the number of these observed in the model and the number defined in the chemical component dictionary. Similar counts are reported in the Torsion and Rings columns. '-' means no outliers of that kind were identified.

Mol	Type	Chain	Res	Link	Chirals	Torsions	Rings
2	UDP	A	401	3	-	0/12/32/32	0/2/2/2
4	ACT	A	403	-	-	0/0/0/0	0/0/0/0
4	ACT	A	404	-	-	0/0/0/0	0/0/0/0
4	ACT	A	405	-	-	0/0/0/0	0/0/0/0
4	ACT	A	406	-	-	0/0/0/0	0/0/0/0
5	IMD	A	407	-	-	0/0/0/0	0/1/1/1
2	UDP	B	401	3	-	0/12/32/32	0/2/2/2
4	ACT	B	403	-	-	0/0/0/0	0/0/0/0
4	ACT	B	404	-	-	0/0/0/0	0/0/0/0

All (8) bond length outliers are listed below:

Mol	Chain	Res	Type	Atoms	Z	Observed(Å)	Ideal(Å)
2	A	401	UDP	O4'-C1'	2.27	1.44	1.41
4	B	403	ACT	CH3-C	2.32	1.52	1.48
4	A	404	ACT	CH3-C	2.54	1.52	1.48
4	A	403	ACT	CH3-C	2.83	1.52	1.48
4	A	406	ACT	CH3-C	3.49	1.53	1.48
2	A	401	UDP	C4-N3	3.50	1.39	1.33
4	A	405	ACT	CH3-C	3.58	1.53	1.48
2	B	401	UDP	C4-N3	3.66	1.39	1.33

All (6) bond angle outliers are listed below:

Mol	Chain	Res	Type	Atoms	Z	Observed(°)	Ideal(°)
2	B	401	UDP	C4'-O4'-C1'	-2.76	106.68	109.72
2	A	401	UDP	PA-O3A-PB	-2.36	124.75	132.67
2	A	401	UDP	O2A-PA-O3A	2.00	114.18	105.09
2	A	401	UDP	O4'-C1'-N1	2.02	112.33	108.08
2	B	401	UDP	C4-N3-C2	6.41	120.49	114.14
2	A	401	UDP	C4-N3-C2	7.98	122.05	114.14

There are no chirality outliers.

There are no torsion outliers.

There are no ring outliers.

2 monomers are involved in 5 short contacts:

Mol	Chain	Res	Type	Clashes	Symm-Clashes
2	A	401	UDP	2	0
5	A	407	IMD	3	0

5.7 Other polymers [i](#)

There are no such residues in this entry.

5.8 Polymer linkage issues [i](#)

There are no chain breaks in this entry.

6 Fit of model and data ⓘ

6.1 Protein, DNA and RNA chains ⓘ

In the following table, the column labelled ‘#RSRZ> 2’ contains the number (and percentage) of RSRZ outliers, followed by percent RSRZ outliers for the chain as percentile scores relative to all X-ray entries and entries of similar resolution. The OWAB column contains the minimum, median, 95th percentile and maximum values of the occupancy-weighted average B-factor per residue. The column labelled ‘Q< 0.9’ lists the number of (and percentage) of residues with an average occupancy less than 0.9.

Mol	Chain	Analysed	<RSRZ>	#RSRZ>2		OWAB(Å ²)	Q<0.9
1	A	232/251 (92%)	0.62	22 (9%)	10 14	12, 21, 50, 71	1 (0%)
1	B	227/251 (90%)	0.54	18 (7%)	15 21	11, 21, 54, 66	0
All	All	459/502 (91%)	0.58	40 (8%)	13 17	11, 21, 54, 71	1 (0%)

All (40) RSRZ outliers are listed below:

Mol	Chain	Res	Type	RSRZ
1	B	327	SER	12.4
1	A	282	ASP	8.3
1	B	198	THR	6.9
1	B	326	PHE	6.5
1	A	280	LYS	6.1
1	B	77	GLY	5.6
1	A	279	PHE	5.6
1	B	194	TYR	5.3
1	A	198	THR	5.2
1	A	283	ARG	4.8
1	A	79[A]	ASP	4.4
1	A	196	TYR	4.3
1	B	79	ASP	4.3
1	A	281	VAL	4.2
1	A	127[C]	HIS	3.9
1	B	283	ARG	3.6
1	B	297[A]	ARG	3.5
1	B	252	TYR	3.4
1	B	250	THR	3.3
1	A	320	ALA	3.3
1	B	195	HIS	3.3
1	A	197	LYS	3.2
1	A	192	PRO	3.1
1	A	194	TYR	3.0

Continued on next page...

Continued from previous page...

Mol	Chain	Res	Type	RSRZ
1	A	284	GLU	2.9
1	B	192	PRO	2.9
1	A	193	LEU	2.9
1	A	327[A]	SER	2.9
1	B	196	TYR	2.7
1	A	321	THR	2.6
1	A	91	GLY	2.6
1	B	197	LYS	2.6
1	A	78	SER	2.4
1	A	224[A]	TRP	2.3
1	A	326	PHE	2.2
1	B	226	ARG	2.2
1	B	325	THR	2.1
1	B	224	TRP	2.1
1	B	233[A]	ARG	2.1
1	A	250	THR	2.1

6.2 Non-standard residues in protein, DNA, RNA chains [i](#)

There are no non-standard protein/DNA/RNA residues in this entry.

6.3 Carbohydrates [i](#)

There are no carbohydrates in this entry.

6.4 Ligands [i](#)

In the following table, the Atoms column lists the number of modelled atoms in the group and the number defined in the chemical component dictionary. LLDF column lists the quality of electron density of the group with respect to its neighbouring residues in protein, DNA or RNA chains. The B-factors column lists the minimum, median, 95th percentile and maximum values of B factors of atoms in the group. The column labelled 'Q< 0.9' lists the number of atoms with occupancy less than 0.9.

Mol	Type	Chain	Res	Atoms	RSCC	RSR	LLDF	B-factors(Å ²)	Q<0.9
2	UDP	A	401	25/25	0.73	0.51	10.23	28,49,81,93	0
4	ACT	B	403	4/4	0.46	0.36	9.75	44,48,54,59	0
2	UDP	B	401	25/25	0.80	0.44	4.62	26,50,73,78	0
4	ACT	B	404	4/4	0.72	0.22	2.50	39,48,53,57	0
4	ACT	A	405	4/4	0.71	0.18	0.40	32,36,44,51	0

Continued on next page...

Continued from previous page...

Mol	Type	Chain	Res	Atoms	RSCC	RSR	LLDF	B-factors(\AA^2)	Q<0.9
4	ACT	A	403	4/4	0.57	0.24	0.40	25,40,53,57	0
4	ACT	A	404	4/4	0.58	0.21	-0.38	43,44,48,54	0
5	IMD	A	407	5/5	0.83	0.18	-	36,37,38,43	0
3	MN	A	402	1/1	0.91	0.20	-	66,66,66,66	0
3	MN	B	402	1/1	0.95	0.18	-	64,64,64,64	0
4	ACT	A	406	4/4	0.62	0.24	-	23,39,40,49	0

6.5 Other polymers [i](#)

There are no such residues in this entry.