



# Full wwPDB X-ray Structure Validation Report ⓘ

Feb 1, 2016 – 09:32 AM GMT

PDB ID : 3IU2  
Title : Crystal Structure of human type-I N-myristoyltransferase with bound myristoyl-CoA and inhibitor DDD90096  
Authors : Qiu, W.; Hutchinson, A.; Wernimont, A.; Lin, Y.-H.; Kania, A.; Ravichandran, M.; Kozieradzki, I.; Cossar, D.; Schapira, M.; Arrowsmith, C.H.; Bountra, C.; Weigelt, J.; Edwards, A.M.; Wyatt, P.G.; Ferguson, M.A.J.; Frearson, J.A.; Brand, S.Y.; Robinson, D.A.; Bochkarev, A.; Hui, R.; Structural Genomics Consortium (SGC)  
Deposited on : 2009-08-29  
Resolution : 1.73 Å(reported)

This is a Full wwPDB X-ray Structure Validation Report for a publicly released PDB entry.  
We welcome your comments at [validation@mail.wwpdb.org](mailto:validation@mail.wwpdb.org)  
A user guide is available at  
<http://wwpdb.org/validation/2016/XrayValidationReportHelp>  
with specific help available everywhere you see the ⓘ symbol.

---

The following versions of software and data (see [references ⓘ](#)) were used in the production of this report:

MolProbity : 4.02b-467  
Mogul : 1.7 (RC4), CSD as536be (2015)  
Xtriage (Phenix) : 1.9-1692  
EDS : rb-20026688  
Percentile statistics : 20151230.v01 (using entries in the PDB archive December 30th 2015)  
Refmac : 5.8.0135  
CCP4 : 6.5.0  
Ideal geometry (proteins) : Engh & Huber (2001)  
Ideal geometry (DNA, RNA) : Parkinson et al. (1996)  
Validation Pipeline (wwPDB-VP) : trunk26865

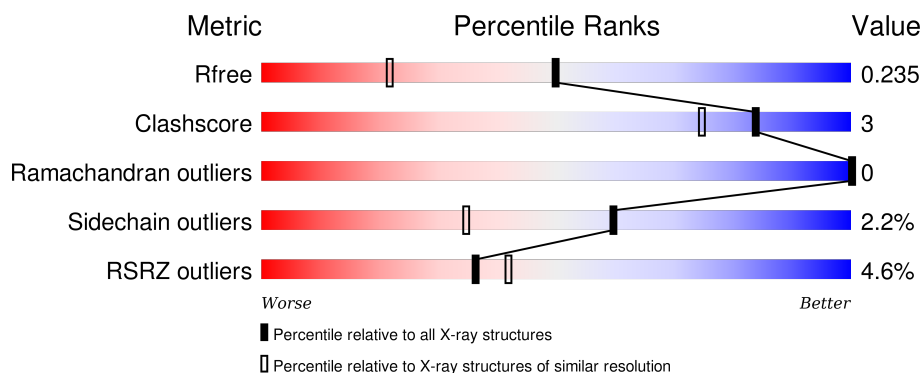
# 1 Overall quality at a glance

The following experimental techniques were used to determine the structure:

## *X-RAY DIFFRACTION*

The reported resolution of this entry is 1.73 Å.

Percentile scores (ranging between 0-100) for global validation metrics of the entry are shown in the following graphic. The table shows the number of entries on which the scores are based.



Metric	Whole archive (#Entries)	Similar resolution (#Entries, resolution range(Å))
$R_{free}$	91344	2417 (1.76-1.72)
Clashscore	102246	2570 (1.76-1.72)
Ramachandran outliers	100387	2544 (1.76-1.72)
Sidechain outliers	100360	2544 (1.76-1.72)
RSRZ outliers	91569	2420 (1.76-1.72)

The table below summarises the geometric issues observed across the polymeric chains and their fit to the electron density. The red, orange, yellow and green segments on the lower bar indicate the fraction of residues that contain outliers for  $\geq 3$ , 2, 1 and 0 types of geometric quality criteria. A grey segment represents the fraction of residues that are not modelled. The numeric value for each fraction is indicated below the corresponding segment, with a dot representing fractions  $\leq 5\%$ . The upper red bar (where present) indicates the fraction of residues that have poor fit to the electron density. The numeric value is given above the bar.

Mol	Chain	Length	Quality of chain
1	A	383	<div> <div>5%</div> <div>93%</div> <div>6% .</div> </div>
1	B	383	<div> <div>4%</div> <div>91%</div> <div>7% ..</div> </div>

The following table lists non-polymeric compounds, carbohydrate monomers and non-standard residues in protein, DNA, RNA chains that are outliers for geometric or electron-density-fit criteria:

Mol	Type	Chain	Res	Chirality	Geometry	Clashes	Electron density
2	MYA	A	1001	X	-	-	-
2	MYA	B	2001	X	-	-	-
3	096	B	2002	-	-	-	X

## 2 Entry composition [i](#)

There are 4 unique types of molecules in this entry. The entry contains 7177 atoms, of which 0 are hydrogens and 0 are deuteriums.

In the tables below, the ZeroOcc column contains the number of atoms modelled with zero occupancy, the AltConf column contains the number of residues with at least one atom in alternate conformation and the Trace column contains the number of residues modelled with at most 2 atoms.

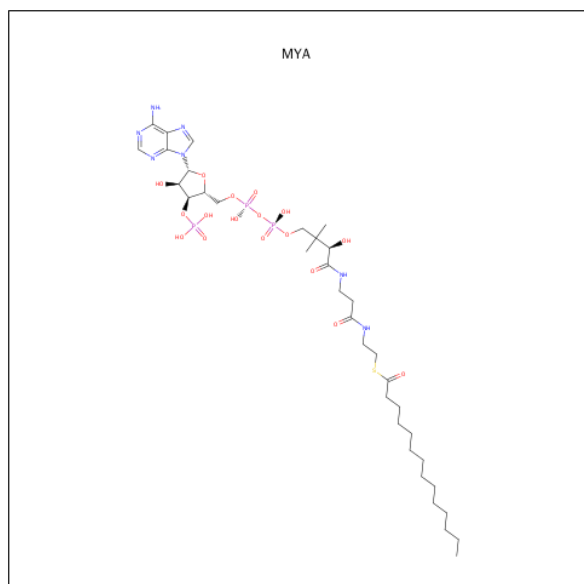
- Molecule 1 is a protein called Glycylpeptide N-tetradecanoyltransferase 1.

Mol	Chain	Residues	Atoms					ZeroOcc	AltConf	Trace
1	A	382	Total	C	N	O	S	0	5	0
			3157	2049	530	562	16			
1	B	379	Total	C	N	O	S	0	4	0
			3137	2036	533	552	16			

There are 2 discrepancies between the modelled and reference sequences:

Chain	Residue	Modelled	Actual	Comment	Reference
A	114	GLY	-	EXPRESSION TAG	UNP P30419
B	114	GLY	-	EXPRESSION TAG	UNP P30419

- Molecule 2 is TETRADECANOYL-COA (three-letter code: MYA) (formula:  $C_{35}H_{62}N_7O_{17}P_3S$ ).



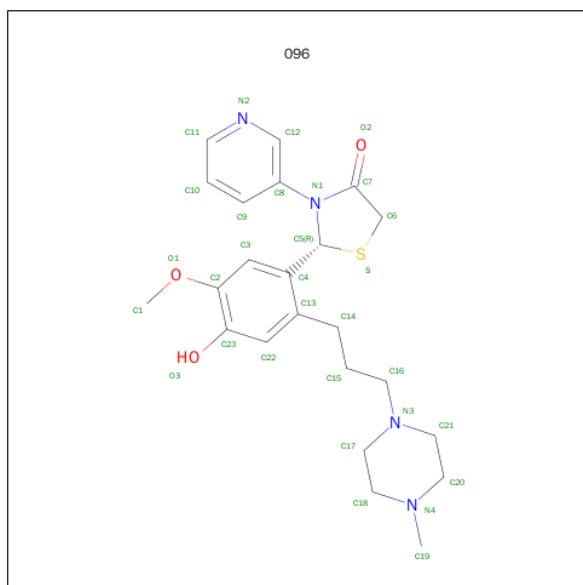
Mol	Chain	Residues	Atoms					ZeroOcc	AltConf
2	A	1	Total	C	N	O	P S	0	0
			63	35	7	17	3 1		

*Continued on next page...*

Continued from previous page...

Mol	Chain	Residues	Atoms						ZeroOcc	AltConf
2	B	1	Total	C	N	O	P	S	0	0
			63	35	7	17	3	1		

- Molecule 3 is (2R)-2-{4-HYDROXY-5-METHOXY-2-[3-(4-METHYLPYPERAZIN-1-YL)PROPYL]PHENYL}-3-PYRIDIN-3-YL-1,3-THIAZOLIDIN-4-ONE (three-letter code: 096) (formula: C<sub>23</sub>H<sub>30</sub>N<sub>4</sub>O<sub>3</sub>S).



Mol	Chain	Residues	Atoms					ZeroOcc	AltConf
3	A	1	Total	C	N	O	S	0	0
			31	23	4	3	1		
3	B	1	Total	C	N	O	S	0	0
			31	23	4	3	1		

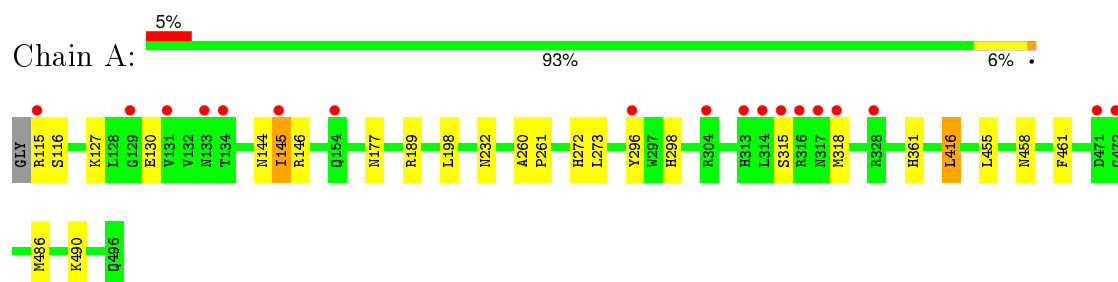
- Molecule 4 is water.

Mol	Chain	Residues	Atoms		ZeroOcc	AltConf
4	A	339	Total	O	0	0
			339	339		
4	B	356	Total	O	0	0
			356	356		

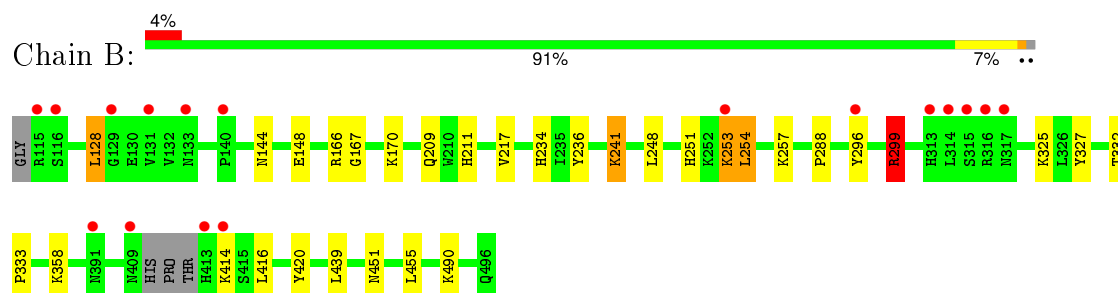
### 3 Residue-property plots [i](#)

These plots are drawn for all protein, RNA and DNA chains in the entry. The first graphic for a chain summarises the proportions of errors displayed in the second graphic. The second graphic shows the sequence view annotated by issues in geometry and electron density. Residues are color-coded according to the number of geometric quality criteria for which they contain at least one outlier: green = 0, yellow = 1, orange = 2 and red = 3 or more. A red dot above a residue indicates a poor fit to the electron density ( $RSRZ > 2$ ). Stretches of 2 or more consecutive residues without any outlier are shown as a green connector. Residues present in the sample, but not in the model, are shown in grey.

- Molecule 1: Glycylpeptide N-tetradecanoyltransferase 1



- Molecule 1: Glycylpeptide N-tetradecanoyltransferase 1



## 4 Data and refinement statistics

Property	Value	Source
Space group	P 2 21 21	Depositor
Cell constants a, b, c, $\alpha$ , $\beta$ , $\gamma$	58.57Å 77.74Å 179.63Å 90.00° 90.00° 90.00°	Depositor
Resolution (Å)	19.60 – 1.73 19.60 – 1.73	Depositor EDS
% Data completeness (in resolution range)	100.0 (19.60-1.73) 98.1 (19.60-1.73)	Depositor EDS
$R_{merge}$	0.06	Depositor
$R_{sym}$	0.04	Depositor
$\langle I/\sigma(I) \rangle$ <sup>1</sup>	1.44 (at 1.73Å)	Xtriage
Refinement program	REFMAC 5.5.0072	Depositor
R, $R_{free}$	0.207 , 0.235 0.207 , 0.235	Depositor DCC
$R_{free}$ test set	4214 reflections (5.27%)	DCC
Wilson B-factor (Å <sup>2</sup> )	18.3	Xtriage
Anisotropy	0.076	Xtriage
Bulk solvent $k_{sol}$ (e/Å <sup>3</sup> ), $B_{sol}$ (Å <sup>2</sup> )	0.33 , 42.2	EDS
Estimated twinning fraction	No twinning to report.	Xtriage
L-test for twinning <sup>2</sup>	$\langle  L  \rangle = 0.44$ , $\langle L^2 \rangle = 0.27$	Xtriage
Outliers	0 of 84308 reflections	Xtriage
$F_o, F_c$ correlation	0.94	EDS
Total number of atoms	7177	wwPDB-VP
Average B, all atoms (Å <sup>2</sup> )	18.0	wwPDB-VP

Xtriage's analysis on translational NCS is as follows: *The largest off-origin peak in the Patterson function is 14.93% of the height of the origin peak. No significant pseudotranslation is detected.*

<sup>1</sup>Intensities estimated from amplitudes.

<sup>2</sup>Theoretical values of  $\langle |L| \rangle$ ,  $\langle L^2 \rangle$  for acentric reflections are 0.5, 0.375 respectively for untwinned datasets, and 0.333, 0.2 for perfectly twinned datasets.

## 5 Model quality [i](#)

### 5.1 Standard geometry [i](#)

Bond lengths and bond angles in the following residue types are not validated in this section: MYA, 096

The Z score for a bond length (or angle) is the number of standard deviations the observed value is removed from the expected value. A bond length (or angle) with  $|Z| > 5$  is considered an outlier worth inspection. RMSZ is the root-mean-square of all Z scores of the bond lengths (or angles).

Mol	Chain	Bond lengths		Bond angles	
		RMSZ	$\# Z  > 5$	RMSZ	$\# Z  > 5$
1	A	0.46	0/3262	0.56	1/4434 (0.0%)
1	B	0.46	1/3236 (0.0%)	0.57	2/4391 (0.0%)
All	All	0.46	1/6498 (0.0%)	0.57	3/8825 (0.0%)

All (1) bond length outliers are listed below:

Mol	Chain	Res	Type	Atoms	Z	Observed(Å)	Ideal(Å)
1	B	217	VAL	CB-CG2	-5.64	1.41	1.52

All (3) bond angle outliers are listed below:

Mol	Chain	Res	Type	Atoms	Z	Observed(°)	Ideal(°)
1	A	416	LEU	CA-CB-CG	8.68	135.26	115.30
1	B	299	ARG	NE-CZ-NH2	-5.43	117.59	120.30
1	B	144	ASN	N-CA-C	-5.34	96.58	111.00

There are no chirality outliers.

There are no planarity outliers.

### 5.2 Too-close contacts [i](#)

In the following table, the Non-H and H(model) columns list the number of non-hydrogen atoms and hydrogen atoms in the chain respectively. The H(added) column lists the number of hydrogen atoms added and optimized by MolProbity. The Clashes column lists the number of clashes within the asymmetric unit, whereas Symm-Clashes lists symmetry related clashes.

Mol	Chain	Non-H	H(model)	H(added)	Clashes	Symm-Clashes
1	A	3157	0	3149	21	0
1	B	3137	0	3150	20	0

*Continued on next page...*



*Continued from previous page...*

Mol	Chain	Non-H	H(model)	H(added)	Clashes	Symm-Clashes
2	A	63	0	58	0	0
2	B	63	0	58	0	0
3	A	31	0	30	1	0
3	B	31	0	30	1	0
4	A	339	0	0	0	0
4	B	356	0	0	4	0
All	All	7177	0	6475	39	0

The all-atom clashscore is defined as the number of clashes found per 1000 atoms (including hydrogen atoms). The all-atom clashscore for this structure is 3.

All (39) close contacts within the same asymmetric unit are listed below, sorted by their clash magnitude.

Atom-1	Atom-2	Interatomic distance (Å)	Clash overlap (Å)
1:A:115:ARG:N	1:A:116:SER:HA	1.73	1.04
1:B:296[B]:TYR:CE1	1:B:451:ASN:HB3	2.15	0.81
1:B:296[B]:TYR:HH	1:B:420:TYR:HD1	1.28	0.80
1:B:296[B]:TYR:HE1	1:B:451:ASN:HB3	1.45	0.79
1:A:296[B]:TYR:HD1	1:A:298:HIS:CE1	2.03	0.76
1:A:115:ARG:N	1:A:116:SER:CA	2.55	0.67
1:B:166:ARG:HG3	1:B:170:LYS:HE2	1.79	0.64
1:A:296[B]:TYR:CD1	1:A:298:HIS:CE1	2.84	0.64
1:A:361:HIS:CD2	1:A:490:LYS:HD2	2.32	0.63
1:A:315:SER:HB3	1:A:318:MET:HB2	1.82	0.62
1:A:145[A]:ILE:HD13	1:A:273:LEU:HG	1.81	0.62
1:A:296[B]:TYR:CD1	1:A:298:HIS:HE1	2.18	0.60
1:B:234:HIS:CE1	1:B:236:TYR:O	2.55	0.59
1:B:296[B]:TYR:OH	1:B:420:TYR:HD1	1.87	0.58
1:A:486:MET:HB2	1:A:490:LYS:HE2	1.88	0.55
1:A:232:ASN:HD21	1:B:241:LYS:NZ	2.05	0.54
1:B:209[A]:GLN:HG3	4:B:520:HOH:O	2.07	0.54
1:B:148:GLU:HG2	4:B:628:HOH:O	2.08	0.52
1:B:251:HIS:CE1	1:B:253:LYS:HD2	2.45	0.52
1:A:145[A]:ILE:HG12	1:A:146:ARG:N	2.25	0.51
1:B:299:ARG:HG2	1:B:439:LEU:HD22	1.93	0.50
1:A:145[A]:ILE:CD1	1:A:273:LEU:HG	2.43	0.48
1:A:232:ASN:ND2	1:B:241:LYS:HZ1	2.12	0.47
1:B:167:GLY:HA2	1:B:170:LYS:HE3	1.98	0.45
1:B:254:LEU:HD23	1:B:257:LYS:HD2	1.98	0.45
1:A:127:LYS:O	1:A:130:GLU:HG2	2.17	0.45
3:B:2002:096:C8	3:B:2002:096:H3	2.47	0.45

*Continued on next page...*

*Continued from previous page...*

Atom-1	Atom-2	Interatomic distance (Å)	Clash overlap (Å)
1:A:458:ASN:HA	1:A:461:PHE:CE2	2.52	0.44
1:B:299:ARG:NH2	1:B:327:TYR:O	2.51	0.44
1:A:177:ASN:O	1:A:189:ARG:HD2	2.18	0.44
1:B:358:LYS:HE2	4:B:823:HOH:O	2.18	0.43
1:A:296[A]:TYR:CE2	3:A:1002:096:H15A	2.54	0.43
1:B:128:LEU:HD13	1:B:288:PRO:HA	1.99	0.43
1:B:211:HIS:HD2	4:B:658:HOH:O	2.02	0.42
1:A:145[B]:ILE:HD12	1:A:272:HIS:HB3	2.01	0.41
1:B:332:THR:HG22	1:B:333:PRO:HD2	2.01	0.41
1:A:232:ASN:HD21	1:B:241:LYS:HZ1	1.67	0.41
1:A:260:ALA:HB3	1:A:261:PRO:HD3	2.03	0.41

There are no symmetry-related clashes.

## 5.3 Torsion angles [i](#)

### 5.3.1 Protein backbone [i](#)

In the following table, the Percentiles column shows the percent Ramachandran outliers of the chain as a percentile score with respect to all X-ray entries followed by that with respect to entries of similar resolution.

The Analysed column shows the number of residues for which the backbone conformation was analysed, and the total number of residues.

Mol	Chain	Analysed	Favoured	Allowed	Outliers	Percentiles	
1	A	385/383 (100%)	377 (98%)	8 (2%)	0	100	100
1	B	379/383 (99%)	372 (98%)	7 (2%)	0	100	100
All	All	764/766 (100%)	749 (98%)	15 (2%)	0	100	100

There are no Ramachandran outliers to report.

### 5.3.2 Protein sidechains [i](#)

In the following table, the Percentiles column shows the percent sidechain outliers of the chain as a percentile score with respect to all X-ray entries followed by that with respect to entries of similar resolution.

The Analysed column shows the number of residues for which the sidechain conformation was analysed, and the total number of residues.

Mol	Chain	Analysed	Rotameric	Outliers	Percentiles	
1	A	351/348 (101%)	346 (99%)	5 (1%)	74	57
1	B	348/348 (100%)	336 (97%)	12 (3%)	44	18
All	All	699/696 (100%)	682 (98%)	17 (2%)	60	31

All (17) residues with a non-rotameric sidechain are listed below:

Mol	Chain	Res	Type
1	A	145[A]	ILE
1	A	145[B]	ILE
1	A	198	LEU
1	A	416	LEU
1	A	455	LEU
1	B	128	LEU
1	B	241	LYS
1	B	248	LEU
1	B	253	LYS
1	B	254	LEU
1	B	299	ARG
1	B	325	LYS
1	B	414	LYS
1	B	416	LEU
1	B	455	LEU
1	B	490[A]	LYS
1	B	490[B]	LYS

Some sidechains can be flipped to improve hydrogen bonding and reduce clashes. All (14) such sidechains are listed below:

Mol	Chain	Res	Type
1	A	147	GLN
1	A	232	ASN
1	A	234	HIS
1	A	317	ASN
1	A	413	HIS
1	A	475	GLN
1	A	496	GLN
1	B	154	GLN
1	B	211	HIS
1	B	234	HIS
1	B	361	HIS
1	B	409	ASN
1	B	428	GLN

*Continued on next page...*

*Continued from previous page...*

Mol	Chain	Res	Type
1	B	458	ASN

### 5.3.3 RNA [i](#)

There are no RNA molecules in this entry.

## 5.4 Non-standard residues in protein, DNA, RNA chains [i](#)

There are no non-standard protein/DNA/RNA residues in this entry.

## 5.5 Carbohydrates [i](#)

There are no carbohydrates in this entry.

## 5.6 Ligand geometry [i](#)

4 ligands are modelled in this entry.

In the following table, the Counts columns list the number of bonds (or angles) for which Mogul statistics could be retrieved, the number of bonds (or angles) that are observed in the model and the number of bonds (or angles) that are defined in the chemical component dictionary. The Link column lists molecule types, if any, to which the group is linked. The Z score for a bond length (or angle) is the number of standard deviations the observed value is removed from the expected value. A bond length (or angle) with  $|Z| > 2$  is considered an outlier worth inspection. RMSZ is the root-mean-square of all Z scores of the bond lengths (or angles).

Mol	Type	Chain	Res	Link	Bond lengths			Bond angles		
					Counts	RMSZ	$\# Z  > 2$	Counts	RMSZ	$\# Z  > 2$
2	MYA	A	1001	-	53,65,65	1.15	5 (9%)	65,91,91	2.00	10 (15%)
3	096	A	1002	-	34,34,34	1.33	4 (11%)	46,47,47	2.84	19 (41%)
2	MYA	B	2001	-	53,65,65	1.15	4 (7%)	65,91,91	1.94	9 (13%)
3	096	B	2002	-	34,34,34	1.20	2 (5%)	46,47,47	2.83	18 (39%)

In the following table, the Chirals column lists the number of chiral outliers, the number of chiral centers analysed, the number of these observed in the model and the number defined in the chemical component dictionary. Similar counts are reported in the Torsion and Rings columns. '-' means no outliers of that kind were identified.

Mol	Type	Chain	Res	Link	Chirals	Torsions	Rings
2	MYA	A	1001	-	1/1/12/14	0/59/80/80	0/3/3/3
3	096	A	1002	-	-	0/16/39/39	0/4/4/4
2	MYA	B	2001	-	1/1/12/14	0/59/80/80	0/3/3/3
3	096	B	2002	-	-	0/16/39/39	1/4/4/4

All (15) bond length outliers are listed below:

Mol	Chain	Res	Type	Atoms	Z	Observed(Å)	Ideal(Å)
3	A	1002	096	C5-S	-6.21	1.76	1.84
3	B	2002	096	C5-S	-5.64	1.77	1.84
3	B	2002	096	C6-S	-2.27	1.75	1.80
3	A	1002	096	C6-S	-2.27	1.75	1.80
3	A	1002	096	C4-C5	-2.26	1.50	1.51
3	A	1002	096	C7-N1	-2.13	1.35	1.37
2	A	1001	MYA	C6-C5	2.06	1.55	1.51
2	A	1001	MYA	P3X-O9A	2.49	1.59	1.51
2	A	1001	MYA	P1A-O2A	2.75	1.61	1.51
2	A	1001	MYA	P2A-O4A	2.93	1.61	1.51
2	B	2001	MYA	P1A-O2A	2.96	1.62	1.51
2	B	2001	MYA	P2A-O4A	3.00	1.62	1.51
2	B	2001	MYA	P3X-O9A	3.29	1.62	1.51
2	B	2001	MYA	O4X-C1X	3.43	1.45	1.41
2	A	1001	MYA	O4X-C1X	4.15	1.46	1.41

All (56) bond angle outliers are listed below:

Mol	Chain	Res	Type	Atoms	Z	Observed(°)	Ideal(°)
2	B	2001	MYA	N3A-C2A-N1A	-9.43	121.67	128.89
2	A	1001	MYA	N3A-C2A-N1A	-9.37	121.72	128.89
3	A	1002	096	C7-C6-S	-5.92	102.69	107.69
3	B	2002	096	C7-C6-S	-4.97	103.49	107.69
2	A	1001	MYA	C13-C11-C10	-4.03	101.99	109.34
3	A	1002	096	C17-C18-N4	-3.90	106.67	110.79
2	B	2001	MYA	C10-C9-N8	-3.49	108.74	116.47
2	A	1001	MYA	C10-C9-N8	-3.46	108.81	116.47
2	B	2001	MYA	P2A-O3A-P1A	-3.40	123.19	132.73
3	B	2002	096	C15-C16-N3	-3.29	105.63	113.89
2	B	2001	MYA	C13-C11-C10	-3.25	103.41	109.34
3	B	2002	096	C21-C20-N4	-3.21	107.40	110.79
2	A	1001	MYA	P2A-O3A-P1A	-3.11	123.99	132.73
3	B	2002	096	C17-C18-N4	-2.85	107.78	110.79
3	A	1002	096	C15-C16-N3	-2.84	106.76	113.89
3	A	1002	096	C21-C20-N4	-2.82	107.81	110.79

*Continued on next page...*

*Continued from previous page...*

Mol	Chain	Res	Type	Atoms	Z	Observed(°)	Ideal(°)
2	A	1001	MYA	C6-C7-N8	-2.58	106.21	111.88
2	A	1001	MYA	C4A-C5A-N7A	-2.40	107.27	109.48
3	A	1002	096	C15-C14-C13	-2.31	106.62	113.94
3	B	2002	096	C20-C21-N3	-2.27	106.57	110.63
2	A	1001	MYA	C4X-O4X-C1X	-2.25	107.25	109.72
2	B	2001	MYA	C6-C7-N8	-2.21	107.04	111.88
3	B	2002	096	O1-C2-C3	-2.17	120.50	124.21
2	B	2001	MYA	C4A-C5A-N7A	-2.11	107.54	109.48
3	A	1002	096	C8-N1-C7	-2.09	119.84	123.05
3	A	1002	096	O1-C2-C3	-2.01	120.78	124.21
2	B	2001	MYA	O5A-P2A-O3A	2.20	115.05	105.09
3	B	2002	096	C11-N2-C12	2.38	121.22	116.84
2	A	1001	MYA	O5A-P2A-O3A	2.41	116.00	105.09
3	A	1002	096	C1-O1-C2	2.48	121.30	117.54
3	A	1002	096	C16-N3-C17	2.48	117.64	111.27
3	A	1002	096	C11-N2-C12	2.49	121.42	116.84
3	B	2002	096	C4-C5-N1	2.64	116.11	113.40
3	B	2002	096	C16-N3-C17	2.73	118.25	111.27
3	A	1002	096	C4-C5-N1	2.93	116.41	113.40
3	B	2002	096	C1-O1-C2	2.98	122.06	117.54
3	B	2002	096	C16-N3-C21	3.49	120.22	111.27
3	A	1002	096	C6-S-C5	3.77	98.82	93.32
3	B	2002	096	C6-S-C5	3.78	98.83	93.32
3	A	1002	096	O1-C2-C23	3.81	119.58	114.57
3	A	1002	096	C16-N3-C21	3.89	121.23	111.27
3	B	2002	096	O1-C2-C23	4.02	119.86	114.57
2	A	1001	MYA	C14-C11-C10	4.09	116.80	109.34
2	B	2001	MYA	C14-C11-C10	4.23	117.06	109.34
3	B	2002	096	C6-C7-N1	4.84	115.41	112.28
3	B	2002	096	C19-N4-C20	5.16	118.67	110.63
3	B	2002	096	C19-N4-C18	5.58	119.32	110.63
3	A	1002	096	C6-C7-N1	5.64	115.92	112.28
3	A	1002	096	C17-N3-C21	5.65	121.13	108.90
3	A	1002	096	C19-N4-C20	5.72	119.55	110.63
3	A	1002	096	C19-N4-C18	5.75	119.59	110.63
3	B	2002	096	C17-N3-C21	5.83	121.53	108.90
2	B	2001	MYA	O2M-C2M-C3M	6.38	120.72	109.05
2	A	1001	MYA	O2M-C2M-C3M	6.77	121.43	109.05
3	A	1002	096	C20-N4-C18	8.64	120.86	109.53
3	B	2002	096	C20-N4-C18	9.51	122.01	109.53

All (2) chirality outliers are listed below:

Mol	Chain	Res	Type	Atom
2	A	1001	MYA	C10
2	B	2001	MYA	C10

There are no torsion outliers.

All (1) ring outliers are listed below:

Mol	Chain	Res	Type	Atoms
3	B	2002	096	C17-C18-C20-C21-N3-N4

2 monomers are involved in 2 short contacts:

Mol	Chain	Res	Type	Clashes	Symm-Clashes
3	A	1002	096	1	0
3	B	2002	096	1	0

## 5.7 Other polymers [i](#)

There are no such residues in this entry.

## 5.8 Polymer linkage issues [i](#)

There are no chain breaks in this entry.

## 6 Fit of model and data ⓘ

### 6.1 Protein, DNA and RNA chains ⓘ

In the following table, the column labelled ‘#RSRZ> 2’ contains the number (and percentage) of RSRZ outliers, followed by percent RSRZ outliers for the chain as percentile scores relative to all X-ray entries and entries of similar resolution. The OWAB column contains the minimum, median, 95<sup>th</sup> percentile and maximum values of the occupancy-weighted average B-factor per residue. The column labelled ‘Q< 0.9’ lists the number of (and percentage) of residues with an average occupancy less than 0.9.

Mol	Chain	Analysed	<RSRZ>	#RSRZ>2	OWAB(Å <sup>2</sup> )	Q<0.9
1	A	382/383 (99%)	0.37	18 (4%) 35 41	10, 16, 29, 40	0
1	B	379/383 (98%)	0.33	17 (4%) 37 43	10, 16, 27, 38	0
All	All	761/766 (99%)	0.35	35 (4%) 36 42	10, 16, 29, 40	0

All (35) RSRZ outliers are listed below:

Mol	Chain	Res	Type	RSRZ
1	A	316	ARG	5.7
1	B	316	ARG	4.9
1	B	115	ARG	4.7
1	B	133	ASN	4.0
1	A	115	ARG	4.0
1	A	315	SER	3.9
1	B	313	HIS	3.8
1	B	131	VAL	3.8
1	B	413	HIS	3.7
1	A	129	GLY	3.5
1	A	314	LEU	3.4
1	A	313	HIS	3.4
1	B	296[A]	TYR	3.3
1	B	315	SER	3.2
1	A	317	ASN	3.1
1	B	409	ASN	3.0
1	A	131	VAL	3.0
1	A	133	ASN	2.9
1	B	314	LEU	2.9
1	A	328	ARG	2.8
1	A	154	GLN	2.8
1	B	116	SER	2.7
1	A	296[A]	TYR	2.7
1	A	304	ARG	2.6

*Continued on next page...*



*Continued from previous page...*

Mol	Chain	Res	Type	RSRZ
1	A	472	GLY	2.6
1	A	134	THR	2.5
1	B	253	LYS	2.4
1	A	145[A]	ILE	2.2
1	A	318	MET	2.2
1	B	129	GLY	2.2
1	B	140	PRO	2.1
1	A	471	ASP	2.1
1	B	414	LYS	2.1
1	B	317	ASN	2.1
1	B	391	ASN	2.0

## 6.2 Non-standard residues in protein, DNA, RNA chains [i](#)

There are no non-standard protein/DNA/RNA residues in this entry.

## 6.3 Carbohydrates [i](#)

There are no carbohydrates in this entry.

## 6.4 Ligands [i](#)

In the following table, the Atoms column lists the number of modelled atoms in the group and the number defined in the chemical component dictionary. LLDF column lists the quality of electron density of the group with respect to its neighbouring residues in protein, DNA or RNA chains. The B-factors column lists the minimum, median, 95<sup>th</sup> percentile and maximum values of B factors of atoms in the group. The column labelled 'Q< 0.9' lists the number of atoms with occupancy less than 0.9.

Mol	Type	Chain	Res	Atoms	RSCC	RSR	LLDF	B-factors(Å <sup>2</sup> )	Q<0.9
3	096	B	2002	31/31	0.63	0.35	5.65	39,44,49,49	0
3	096	A	1002	31/31	0.87	0.17	1.10	19,27,34,34	0
2	MYA	A	1001	63/63	0.94	0.09	-0.60	7,16,19,21	0
2	MYA	B	2001	63/63	0.94	0.09	-0.70	6,18,20,20	0

## 6.5 Other polymers [i](#)

There are no such residues in this entry.