



Full wwPDB X-ray Structure Validation Report ⓘ

Jun 9, 2016 – 02:41 PM EDT

PDB ID : 5IVA
Title : The LPS Transporter LptDE from Pseudomonas aeruginosa, core complex
Authors : Botos, I.; Buchanan, S.K.
Deposited on : 2016-03-20
Resolution : 2.99 Å(reported)

This is a Full wwPDB X-ray Structure Validation Report for a publicly released PDB entry.
We welcome your comments at validation@mail.wwpdb.org
A user guide is available at
<http://wwpdb.org/validation/2016/XrayValidationReportHelp>
with specific help available everywhere you see the ⓘ symbol.

The following versions of software and data (see [references ⓘ](#)) were used in the production of this report:

MolProbity : 4.02b-467
Mogul : 1.7.1 (RC1), CSD as537be (2016)
Xtriage (Phenix) : 1.9-1692
EDS : rb-20027674
Percentile statistics : 20151230.v01 (using entries in the PDB archive December 30th 2015)
Refmac : 5.8.0135
CCP4 : 6.5.0
Ideal geometry (proteins) : Engh & Huber (2001)
Ideal geometry (DNA, RNA) : Parkinson et al. (1996)
Validation Pipeline (wwPDB-VP) : rb-20027674

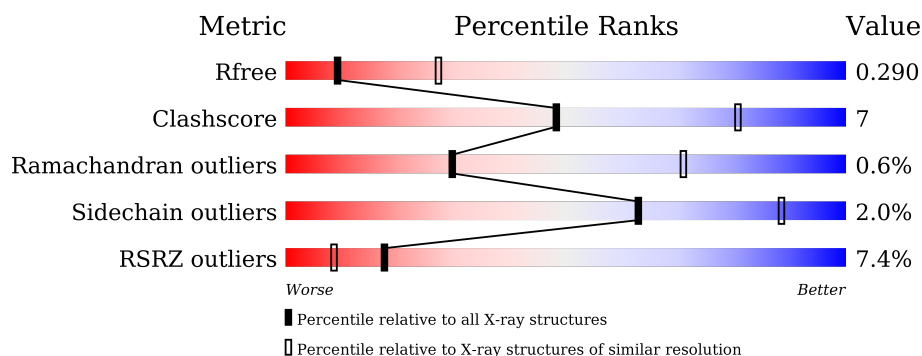
1 Overall quality at a glance

The following experimental techniques were used to determine the structure:

X-RAY DIFFRACTION

The reported resolution of this entry is 2.99 Å.

Percentile scores (ranging between 0-100) for global validation metrics of the entry are shown in the following graphic. The table shows the number of entries on which the scores are based.



Metric	Whole archive (#Entries)	Similar resolution (#Entries, resolution range(Å))
R_{free}	91344	1992 (3.00-2.96)
Clashscore	102246	2349 (3.00-2.96)
Ramachandran outliers	100387	2274 (3.00-2.96)
Sidechain outliers	100360	2277 (3.00-2.96)
RSRZ outliers	91569	2007 (3.00-2.96)

The table below summarises the geometric issues observed across the polymeric chains and their fit to the electron density. The red, orange, yellow and green segments on the lower bar indicate the fraction of residues that contain outliers for ≥ 3 , 2, 1 and 0 types of geometric quality criteria. A grey segment represents the fraction of residues that are not modelled. The numeric value for each fraction is indicated below the corresponding segment, with a dot representing fractions $\leq 5\%$. The upper red bar (where present) indicates the fraction of residues that have poor fit to the electron density. The numeric value is given above the bar.

Mol	Chain	Length	Quality of chain
1	A	646	<div> <div>7%</div> <div> <div></div> <div>71%</div> <div>18%</div> <div>• 10%</div> </div> </div>
2	B	192	<div> <div>6%</div> <div> <div></div> <div>68%</div> <div>9%</div> <div>• 21%</div> </div> </div>

The following table lists non-polymeric compounds, carbohydrate monomers and non-standard residues in protein, DNA, RNA chains that are outliers for geometric or electron-density-fit criteria:

Mol	Type	Chain	Res	Chirality	Geometry	Clashes	Electron density
3	C8E	A	701	-	-	-	X
3	C8E	A	702	-	-	-	X
3	C8E	A	703	-	-	-	X
3	C8E	A	705	-	-	-	X
3	C8E	A	706	-	-	-	X
3	C8E	A	707	-	-	-	X

2 Entry composition

There are 4 unique types of molecules in this entry. The entry contains 6104 atoms, of which 0 are hydrogens and 0 are deuteriums.

In the tables below, the ZeroOcc column contains the number of atoms modelled with zero occupancy, the AltConf column contains the number of residues with at least one atom in alternate conformation and the Trace column contains the number of residues modelled with at most 2 atoms.

- Molecule 1 is a protein called LPS-assembly protein LptD.

Mol	Chain	Residues	Atoms					ZeroOcc	AltConf	Trace
			Total	C	N	O	S			
1	A	579	4761	3013	820	918	10	0	0	0

There are 21 discrepancies between the modelled and reference sequences:

Chain	Residue	Modelled	Actual	Comment	Reference
A	1	MET	-	initiating methionine	UNP Q9I5U2
A	2	SER	-	expression tag	UNP Q9I5U2
A	3	ASN	-	expression tag	UNP Q9I5U2
A	4	HIS	-	expression tag	UNP Q9I5U2
A	5	HIS	-	expression tag	UNP Q9I5U2
A	6	HIS	-	expression tag	UNP Q9I5U2
A	7	HIS	-	expression tag	UNP Q9I5U2
A	8	HIS	-	expression tag	UNP Q9I5U2
A	9	HIS	-	expression tag	UNP Q9I5U2
A	10	HIS	-	expression tag	UNP Q9I5U2
A	11	HIS	-	expression tag	UNP Q9I5U2
A	12	HIS	-	expression tag	UNP Q9I5U2
A	13	HIS	-	expression tag	UNP Q9I5U2
A	14	GLU	-	expression tag	UNP Q9I5U2
A	15	ASN	-	expression tag	UNP Q9I5U2
A	16	LEU	-	expression tag	UNP Q9I5U2
A	17	TYR	-	expression tag	UNP Q9I5U2
A	18	PHE	-	expression tag	UNP Q9I5U2
A	19	GLN	-	expression tag	UNP Q9I5U2
A	20	SER	-	expression tag	UNP Q9I5U2
A	21	MET	-	expression tag	UNP Q9I5U2

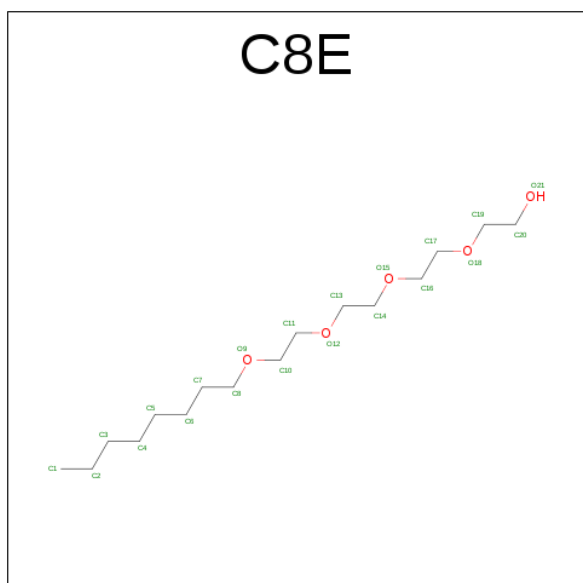
- Molecule 2 is a protein called LPS-assembly lipoprotein LptE.

Mol	Chain	Residues	Atoms					ZeroOcc	AltConf	Trace
2	B	152	Total	C	N	O	S	0	0	0
			1192	730	218	241	3			

There are 5 discrepancies between the modelled and reference sequences:

Chain	Residue	Modelled	Actual	Comment	Reference
B	1	ALA	-	expression tag	UNP A0A0A8RAG8
B	2	PRO	-	expression tag	UNP A0A0A8RAG8
B	3	ASN	-	expression tag	UNP A0A0A8RAG8
B	4	THR	-	expression tag	UNP A0A0A8RAG8
B	5	SER	-	expression tag	UNP A0A0A8RAG8

- Molecule 3 is (HYDROXYETHYLOXY)TRI(ETHYLOXY)OCTANE (three-letter code: C8E) (formula: C₁₆H₃₄O₅).



Mol	Chain	Residues	Atoms			ZeroOcc	AltConf
3	A	1	Total	C	O	0	0
			21	16	5		
3	A	1	Total	C	O	0	0
			21	16	5		
3	A	1	Total	C	O	0	0
			21	16	5		
3	A	1	Total	C	O	0	0
			21	16	5		
3	A	1	Total	C	O	0	0
			21	16	5		

Continued on next page...

Continued from previous page...

Mol	Chain	Residues	Atoms			ZeroOcc	AltConf
3	A	1	Total	C	O	0	0
			21	16	5		

- Molecule 4 is water.

Mol	Chain	Residues	Atoms		ZeroOcc	AltConf
4	A	3	Total	O	0	0
			3	3		
4	B	1	Total	O	0	0
			1	1		

4 Data and refinement statistics

Property	Value	Source
Space group	C 2 2 21	Depositor
Cell constants a, b, c, α , β , γ	148.92Å 155.99Å 115.65Å 90.00° 90.00° 90.00°	Depositor
Resolution (Å)	49.09 – 2.99 49.09 – 2.99	Depositor EDS
% Data completeness (in resolution range)	99.6 (49.09-2.99) 92.0 (49.09-2.99)	Depositor EDS
R_{merge}	(Not available)	Depositor
R_{sym}	(Not available)	Depositor
$\langle I/\sigma(I) \rangle$ ¹	1.89 (at 3.01Å)	Xtriage
Refinement program	PHENIX (phenix.refine: 1.9_1692)	Depositor
R, R_{free}	0.248 , 0.295 0.247 , 0.290	Depositor DCC
R_{free} test set	1264 reflections (4.98%)	DCC
Wilson B-factor (Å ²)	68.3	Xtriage
Anisotropy	0.267	Xtriage
Bulk solvent k_{sol} (e/Å ³), B_{sol} (Å ²)	0.28 , 37.0	EDS
L-test for twinning ²	$\langle L \rangle = 0.48$, $\langle L^2 \rangle = 0.31$	Xtriage
Estimated twinning fraction	0.032 for -k,-h,-l	Xtriage
F_o, F_c correlation	0.90	EDS
Total number of atoms	6104	wwPDB-VP
Average B, all atoms (Å ²)	81.0	wwPDB-VP

Xtriage's analysis on translational NCS is as follows: *The largest off-origin peak in the Patterson function is 3.87% of the height of the origin peak. No significant pseudotranslation is detected.*

¹Intensities estimated from amplitudes.

²Theoretical values of $\langle |L| \rangle$, $\langle L^2 \rangle$ for acentric reflections are 0.5, 0.375 respectively for untwinned datasets, and 0.333, 0.2 for perfectly twinned datasets.

5 Model quality

5.1 Standard geometry

Bond lengths and bond angles in the following residue types are not validated in this section: C8E

The Z score for a bond length (or angle) is the number of standard deviations the observed value is removed from the expected value. A bond length (or angle) with $|Z| > 5$ is considered an outlier worth inspection. RMSZ is the root-mean-square of all Z scores of the bond lengths (or angles).

Mol	Chain	Bond lengths		Bond angles	
		RMSZ	$\# Z > 5$	RMSZ	$\# Z > 5$
1	A	0.23	0/4893	0.41	0/6643
2	B	0.21	0/1204	0.38	0/1628
All	All	0.23	0/6097	0.41	0/8271

There are no bond length outliers.

There are no bond angle outliers.

There are no chirality outliers.

There are no planarity outliers.

5.2 Too-close contacts

In the following table, the Non-H and H(model) columns list the number of non-hydrogen atoms and hydrogen atoms in the chain respectively. The H(added) column lists the number of hydrogen atoms added and optimized by MolProbity. The Clashes column lists the number of clashes within the asymmetric unit, whereas Symm-Clashes lists symmetry related clashes.

Mol	Chain	Non-H	H(model)	H(added)	Clashes	Symm-Clashes
1	A	4761	0	4472	75	0
2	B	1192	0	1174	9	0
3	A	147	0	238	7	0
4	A	3	0	0	0	0
4	B	1	0	0	0	0
All	All	6104	0	5884	87	0

The all-atom clashscore is defined as the number of clashes found per 1000 atoms (including hydrogen atoms). The all-atom clashscore for this structure is 7.

All (87) close contacts within the same asymmetric unit are listed below, sorted by their clash magnitude.

Atom-1	Atom-2	Interatomic distance (Å)	Clash overlap (Å)
1:A:299:TYR:HB2	1:A:322:GLN:HB2	1.59	0.84
1:A:89:MET:HB3	1:A:110:LEU:HD12	1.69	0.75
1:A:208:LEU:HB3	1:A:209:PRO:HD3	1.70	0.73
1:A:443:ASP:HA	1:A:447:LEU:HB2	1.75	0.68
1:A:570:GLU:OE1	1:A:589:ARG:NH1	2.29	0.65
1:A:501:PRO:HG2	1:A:504:ASP:HB3	1.79	0.65
1:A:147:ASP:HB3	1:A:175:ARG:HG2	1.80	0.63
1:A:471:PHE:HB3	1:A:475:TRP:HB3	1.82	0.62
1:A:175:ARG:NH1	1:A:177:THR:OG1	2.33	0.61
1:A:335:LEU:HB2	1:A:354:PRO:HG2	1.82	0.61
1:A:129:LEU:HD23	1:A:151:ILE:HG22	1.82	0.60
1:A:516:ARG:HB3	1:A:538:ILE:HB	1.83	0.60
1:A:209:PRO:HD2	1:A:234:ARG:HB3	1.83	0.60
2:B:33:THR:HG22	2:B:130:ARG:HG3	1.84	0.59
1:A:326:LEU:HD12	1:A:362:PRO:HG2	1.83	0.59
2:B:61:GLU:HG3	2:B:85:ILE:HG12	1.85	0.58
1:A:480:ASP:HB3	1:A:494:SER:HB3	1.84	0.57
1:A:417:GLU:OE1	1:A:420:SER:OG	2.20	0.57
1:A:473:ARG:HH22	1:A:475:TRP:HE3	1.51	0.56
1:A:246:ASN:N	1:A:250:SER:O	2.36	0.56
1:A:210:GLN:HG3	1:A:233:VAL:HG22	1.87	0.55
1:A:508:VAL:HG22	1:A:546:ILE:HB	1.89	0.55
1:A:337:PHE:HB2	1:A:352:LEU:HB3	1.87	0.55
1:A:117:ARG:NH2	1:A:159:ASP:OD1	2.40	0.55
1:A:312:ASN:O	1:A:316:GLU:N	2.40	0.55
1:A:398:ASP:OD2	1:A:430:ARG:NH1	2.39	0.54
1:A:132:LEU:HD22	1:A:134:ASN:HB2	1.88	0.54
1:A:169:THR:OG1	1:A:171:TYR:O	2.24	0.54
1:A:212:THR:HG22	1:A:231:GLU:HG3	1.89	0.54
1:A:499:TYR:HB3	1:A:509:VAL:HB	1.90	0.54
1:A:588:ASN:HD21	3:A:702:C8E:H41	1.73	0.54
1:A:608:ARG:HD3	3:A:702:C8E:H52	1.91	0.53
1:A:48:LEU:HB3	1:A:65:PRO:HB2	1.89	0.53
1:A:510:ASN:HB2	1:A:544:SER:HB2	1.91	0.53
1:A:590:TYR:HD1	1:A:608:ARG:HG2	1.73	0.52
2:B:89:ILE:HB	2:B:98:MET:HG2	1.90	0.52
1:A:79:TYR:HB2	1:A:91:GLU:HB2	1.92	0.51
1:A:541:HIS:CD2	1:A:561:TYR:HB3	2.46	0.51
1:A:440:THR:OG1	1:A:441:GLU:N	2.44	0.50
1:A:119:GLY:O	1:A:252:ARG:NH1	2.45	0.50
1:A:474:ASP:HB2	1:A:500:GLN:HB2	1.94	0.49
1:A:324:ARG:NH2	1:A:393:LYS:O	2.37	0.49

Continued on next page...

Continued from previous page...

Atom-1	Atom-2	Interatomic distance (Å)	Clash overlap (Å)
1:A:120:PHE:HE2	1:A:597:ASP:HA	1.77	0.48
3:A:707:C8E:H52	3:A:707:C8E:H21	1.45	0.48
1:A:438:GLY:H	1:A:442:LYS:HD2	1.78	0.48
2:B:14:ASP:O	2:B:142:GLN:NE2	2.47	0.48
1:A:68:PHE:HB2	1:A:76:ALA:HB3	1.96	0.47
1:A:473:ARG:NH1	1:A:500:GLN:O	2.48	0.47
1:A:55:THR:HA	1:A:609:GLY:HA3	1.96	0.46
1:A:310:ASP:N	1:A:310:ASP:OD1	2.49	0.46
1:A:237:ARG:NH2	1:A:264:ALA:O	2.48	0.45
1:A:398:ASP:OD1	1:A:398:ASP:N	2.48	0.45
1:A:245:PHE:O	1:A:252:ARG:NH2	2.48	0.45
1:A:189:LEU:HD23	1:A:211:ILE:HG13	1.99	0.45
1:A:307:GLY:O	1:A:312:ASN:ND2	2.41	0.44
1:A:501:PRO:HG3	1:A:507:LYS:HD2	1.99	0.44
1:A:52:PHE:CE2	1:A:62:LEU:HD13	2.53	0.44
1:A:43:ARG:H	1:A:43:ARG:HG3	1.49	0.44
1:A:430:ARG:NH1	1:A:431:ASP:O	2.51	0.44
1:A:561:TYR:CZ	3:A:701:C8E:H62	2.52	0.44
1:A:412:GLU:HG3	1:A:416:PHE:HB2	2.00	0.43
2:B:127:SER:HB3	2:B:131:ARG:HH12	1.83	0.43
1:A:96:TYR:OH	1:A:134:ASN:OD1	2.29	0.43
3:A:703:C8E:H171	3:A:703:C8E:H141	1.78	0.43
1:A:311:LEU:H	1:A:311:LEU:HG	1.55	0.43
1:A:125:LYS:HE2	1:A:125:LYS:HB3	1.90	0.43
1:A:143:LEU:HB2	1:A:181:ARG:CZ	2.48	0.43
1:A:443:ASP:OD1	1:A:444:LEU:N	2.52	0.43
1:A:546:ILE:HG12	1:A:556:LEU:HG	2.01	0.42
2:B:20:LYS:HA	2:B:46:VAL:HG22	2.00	0.42
1:A:472:ASN:C	1:A:474:ASP:H	2.22	0.42
1:A:137:GLY:O	1:A:181:ARG:NH2	2.52	0.42
1:A:379:PHE:CE2	1:A:464:ALA:HB2	2.55	0.42
1:A:209:PRO:CD	1:A:234:ARG:HB3	2.47	0.41
2:B:56:LEU:HD22	2:B:141:LEU:HD21	2.01	0.41
1:A:279:LEU:O	1:A:290:PRO:HD2	2.20	0.41
1:A:586:LEU:HD12	1:A:612:LEU:HD13	2.02	0.41
1:A:501:PRO:HD3	1:A:507:LYS:O	2.20	0.41
3:A:706:C8E:H41	3:A:706:C8E:H13	1.79	0.41
1:A:217:LEU:HA	1:A:218:PRO:HD3	1.95	0.41
1:A:608:ARG:HB3	3:A:702:C8E:H61	2.02	0.41
2:B:11:GLY:O	2:B:13:GLY:N	2.54	0.41
1:A:371:VAL:HG21	1:A:529:PHE:HE2	1.85	0.41

Continued on next page...

Continued from previous page...

Atom-1	Atom-2	Interatomic distance (Å)	Clash overlap (Å)
1:A:134:ASN:HB3	1:A:146:VAL:HB	2.03	0.40
1:A:376:GLU:HA	1:A:377:PRO:HD2	1.94	0.40
1:A:435:GLN:HB2	1:A:440:THR:HB	2.03	0.40
2:B:102:VAL:HG22	2:B:133:LEU:HD22	2.04	0.40

There are no symmetry-related clashes.

5.3 Torsion angles [i](#)

5.3.1 Protein backbone [i](#)

In the following table, the Percentiles column shows the percent Ramachandran outliers of the chain as a percentile score with respect to all X-ray entries followed by that with respect to entries of similar resolution.

The Analysed column shows the number of residues for which the backbone conformation was analysed, and the total number of residues.

Mol	Chain	Analysed	Favoured	Allowed	Outliers	Percentiles	
1	A	577/646 (89%)	531 (92%)	44 (8%)	2 (0%)	46	82
2	B	150/192 (78%)	142 (95%)	6 (4%)	2 (1%)	15	52
All	All	727/838 (87%)	673 (93%)	50 (7%)	4 (1%)	30	71

All (4) Ramachandran outliers are listed below:

Mol	Chain	Res	Type
1	A	209	PRO
2	B	12	LEU
1	A	501	PRO
2	B	17	PHE

5.3.2 Protein sidechains [i](#)

In the following table, the Percentiles column shows the percent sidechain outliers of the chain as a percentile score with respect to all X-ray entries followed by that with respect to entries of similar resolution.

The Analysed column shows the number of residues for which the sidechain conformation was analysed, and the total number of residues.

Mol	Chain	Analysed	Rotameric	Outliers	Percentiles	
1	A	510/571 (89%)	501 (98%)	9 (2%)	66	90
2	B	130/158 (82%)	126 (97%)	4 (3%)	47	82
All	All	640/729 (88%)	627 (98%)	13 (2%)	63	88

All (13) residues with a non-rotameric sidechain are listed below:

Mol	Chain	Res	Type
1	A	43	ARG
1	A	70	LEU
1	A	132	LEU
1	A	303	LEU
1	A	304	ASP
1	A	310	ASP
1	A	581	CYS
1	A	596	ASP
1	A	615	VAL
2	B	12	LEU
2	B	17	PHE
2	B	96	VAL
2	B	98	MET

Some sidechains can be flipped to improve hydrogen bonding and reduce clashes. There are no such sidechains identified.

5.3.3 RNA [i](#)

There are no RNA molecules in this entry.

5.4 Non-standard residues in protein, DNA, RNA chains [i](#)

There are no non-standard protein/DNA/RNA residues in this entry.

5.5 Carbohydrates [i](#)

There are no carbohydrates in this entry.

5.6 Ligand geometry [i](#)

7 ligands are modelled in this entry.

In the following table, the Counts columns list the number of bonds (or angles) for which Mogul statistics could be retrieved, the number of bonds (or angles) that are observed in the model and the number of bonds (or angles) that are defined in the chemical component dictionary. The Link column lists molecule types, if any, to which the group is linked. The Z score for a bond length (or angle) is the number of standard deviations the observed value is removed from the expected value. A bond length (or angle) with $|Z| > 2$ is considered an outlier worth inspection. RMSZ is the root-mean-square of all Z scores of the bond lengths (or angles).

Mol	Type	Chain	Res	Link	Bond lengths			Bond angles		
					Counts	RMSZ	$\# Z > 2$	Counts	RMSZ	$\# Z > 2$
3	C8E	A	701	-	20,20,20	0.38	0	19,19,19	0.41	0
3	C8E	A	702	-	20,20,20	0.39	0	19,19,19	0.60	0
3	C8E	A	703	-	20,20,20	0.39	0	19,19,19	0.38	0
3	C8E	A	704	-	20,20,20	0.39	0	19,19,19	0.35	0
3	C8E	A	705	-	20,20,20	0.39	0	19,19,19	0.40	0
3	C8E	A	706	-	20,20,20	0.38	0	19,19,19	0.35	0
3	C8E	A	707	-	20,20,20	0.38	0	19,19,19	0.41	0

In the following table, the Chirals column lists the number of chiral outliers, the number of chiral centers analysed, the number of these observed in the model and the number defined in the chemical component dictionary. Similar counts are reported in the Torsion and Rings columns. '-' means no outliers of that kind were identified.

Mol	Type	Chain	Res	Link	Chirals	Torsions	Rings
3	C8E	A	701	-	-	0/18/18/18	0/0/0/0
3	C8E	A	702	-	-	0/18/18/18	0/0/0/0
3	C8E	A	703	-	-	0/18/18/18	0/0/0/0
3	C8E	A	704	-	-	0/18/18/18	0/0/0/0
3	C8E	A	705	-	-	0/18/18/18	0/0/0/0
3	C8E	A	706	-	-	0/18/18/18	0/0/0/0
3	C8E	A	707	-	-	0/18/18/18	0/0/0/0

There are no bond length outliers.

There are no bond angle outliers.

There are no chirality outliers.

There are no torsion outliers.

There are no ring outliers.

5 monomers are involved in 7 short contacts:

Mol	Chain	Res	Type	Clashes	Symm-Clashes
3	A	701	C8E	1	0
3	A	702	C8E	3	0

Continued on next page...

Continued from previous page...

Mol	Chain	Res	Type	Clashes	Symm-Clashes
3	A	703	C8E	1	0
3	A	706	C8E	1	0
3	A	707	C8E	1	0

5.7 Other polymers [i](#)

There are no such residues in this entry.

5.8 Polymer linkage issues [i](#)

There are no chain breaks in this entry.

6 Fit of model and data

6.1 Protein, DNA and RNA chains

In the following table, the column labelled ‘#RSRZ> 2’ contains the number (and percentage) of RSRZ outliers, followed by percent RSRZ outliers for the chain as percentile scores relative to all X-ray entries and entries of similar resolution. The OWAB column contains the minimum, median, 95th percentile and maximum values of the occupancy-weighted average B-factor per residue. The column labelled ‘Q< 0.9’ lists the number of (and percentage) of residues with an average occupancy less than 0.9.

Mol	Chain	Analysed	<RSRZ>	#RSRZ>2		OWAB(Å ²)	Q<0.9
1	A	579/646 (89%)	0.43	43 (7%)	17 8	39, 74, 135, 224	0
2	B	152/192 (79%)	0.45	11 (7%)	18 9	41, 75, 115, 144	0
All	All	731/838 (87%)	0.44	54 (7%)	17 8	39, 75, 131, 224	0

All (54) RSRZ outliers are listed below:

Mol	Chain	Res	Type	RSRZ
1	A	39	ILE	5.7
1	A	40	ASP	5.6
1	A	73	ASN	5.0
1	A	41	ASP	4.8
1	A	72	PRO	4.6
1	A	70	LEU	3.9
2	B	3	ASN	3.9
1	A	254	LYS	3.8
1	A	616	LEU	3.8
2	B	4	THR	3.6
1	A	345	GLY	3.6
1	A	253	GLY	3.5
1	A	243	ILE	3.4
1	A	447	LEU	3.3
1	A	446	ARG	3.2
1	A	245	PHE	3.2
1	A	444	LEU	3.1
1	A	341	THR	3.1
1	A	74	TYR	3.1
2	B	5	SER	3.0
1	A	48	LEU	3.0
1	A	598	ALA	2.9
2	B	154	ARG	2.9
2	B	90	VAL	2.9

Continued on next page...

Continued from previous page...

Mol	Chain	Res	Type	RSRZ
1	A	309	THR	2.8
1	A	340	ASP	2.8
2	B	50	SER	2.8
2	B	55	HIS	2.8
1	A	342	THR	2.8
1	A	252	ARG	2.7
1	A	116	HIS	2.7
2	B	98	MET	2.6
1	A	582	TRP	2.6
2	B	24	VAL	2.6
1	A	66	TYR	2.5
1	A	251	ILE	2.5
1	A	249	GLY	2.5
1	A	246	ASN	2.4
1	A	615	VAL	2.4
1	A	118	GLU	2.4
1	A	645	LYS	2.4
1	A	78	LEU	2.3
1	A	46	GLY	2.3
1	A	445	LYS	2.3
1	A	123	TYR	2.3
1	A	97	LEU	2.2
1	A	164	LEU	2.2
2	B	51	ASN	2.2
1	A	344	ALA	2.1
1	A	67	TYR	2.1
1	A	126	ASP	2.1
2	B	97	LEU	2.0
1	A	348	PHE	2.0
1	A	452	SER	2.0

6.2 Non-standard residues in protein, DNA, RNA chains ⓘ

There are no non-standard protein/DNA/RNA residues in this entry.

6.3 Carbohydrates ⓘ

There are no carbohydrates in this entry.

6.4 Ligands [i](#)

In the following table, the Atoms column lists the number of modelled atoms in the group and the number defined in the chemical component dictionary. LLDF column lists the quality of electron density of the group with respect to its neighbouring residues in protein, DNA or RNA chains. The B-factors column lists the minimum, median, 95th percentile and maximum values of B factors of atoms in the group. The column labelled 'Q< 0.9' lists the number of atoms with occupancy less than 0.9.

Mol	Type	Chain	Res	Atoms	RSCC	RSR	LLDF	B-factors(Å ²)	Q<0.9
3	C8E	A	707	21/21	0.53	1.09	23.11	80,95,120,134	0
3	C8E	A	706	21/21	0.81	0.34	6.96	55,78,120,128	0
3	C8E	A	705	21/21	0.80	0.49	6.25	56,77,99,120	0
3	C8E	A	701	21/21	0.84	0.34	4.11	57,78,86,92	0
3	C8E	A	702	21/21	0.79	0.42	3.63	69,89,97,106	0
3	C8E	A	703	21/21	0.68	0.34	2.59	50,91,117,132	0
3	C8E	A	704	21/21	0.63	0.38	-	103,121,128,136	0

6.5 Other polymers [i](#)

There are no such residues in this entry.