



Full wwPDB X-ray Structure Validation Report ⓘ

Feb 1, 2016 – 02:51 AM GMT

PDB ID : 2IYP
Title : PRODUCT RUP
Authors : Sundaramoorthy, R.; Iulek, J.; Hunter, W.N.
Deposited on : 2006-07-21
Resolution : 2.79 Å(reported)

This is a Full wwPDB X-ray Structure Validation Report for a publicly released PDB entry.
We welcome your comments at validation@mail.wwpdb.org
A user guide is available at
<http://wwpdb.org/validation/2016/XrayValidationReportHelp>
with specific help available everywhere you see the ⓘ symbol.

The following versions of software and data (see [references ⓘ](#)) were used in the production of this report:

MolProbity : 4.02b-467
Mogul : 1.7 (RC4), CSD as536be (2015)
Xtriage (Phenix) : 1.9-1692
EDS : rb-20026688
Percentile statistics : 20151230.v01 (using entries in the PDB archive December 30th 2015)
Refmac : 5.8.0135
CCP4 : 6.5.0
Ideal geometry (proteins) : Engh & Huber (2001)
Ideal geometry (DNA, RNA) : Parkinson et al. (1996)
Validation Pipeline (wwPDB-VP) : trunk26865

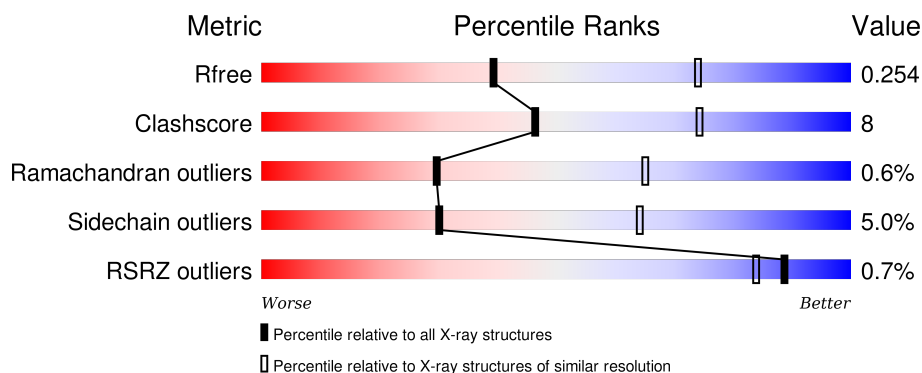
1 Overall quality at a glance

The following experimental techniques were used to determine the structure:

X-RAY DIFFRACTION

The reported resolution of this entry is 2.79 Å.

Percentile scores (ranging between 0-100) for global validation metrics of the entry are shown in the following graphic. The table shows the number of entries on which the scores are based.



Metric	Whole archive (#Entries)	Similar resolution (#Entries, resolution range(Å))
R_{free}	91344	2393 (2.80-2.80)
Clashscore	102246	2827 (2.80-2.80)
Ramachandran outliers	100387	2782 (2.80-2.80)
Sidechain outliers	100360	2784 (2.80-2.80)
RSRZ outliers	91569	2404 (2.80-2.80)

The table below summarises the geometric issues observed across the polymeric chains and their fit to the electron density. The red, orange, yellow and green segments on the lower bar indicate the fraction of residues that contain outliers for ≥ 3 , 2, 1 and 0 types of geometric quality criteria. A grey segment represents the fraction of residues that are not modelled. The numeric value for each fraction is indicated below the corresponding segment, with a dot representing fractions $\leq 5\%$. The upper red bar (where present) indicates the fraction of residues that have poor fit to the electron density. The numeric value is given above the bar.

Mol	Chain	Length	Quality of chain
1	A	473	 74% 23% ..
1	B	473	 81% 16% .
1	C	473	 85% 13% ..

2 Entry composition [i](#)

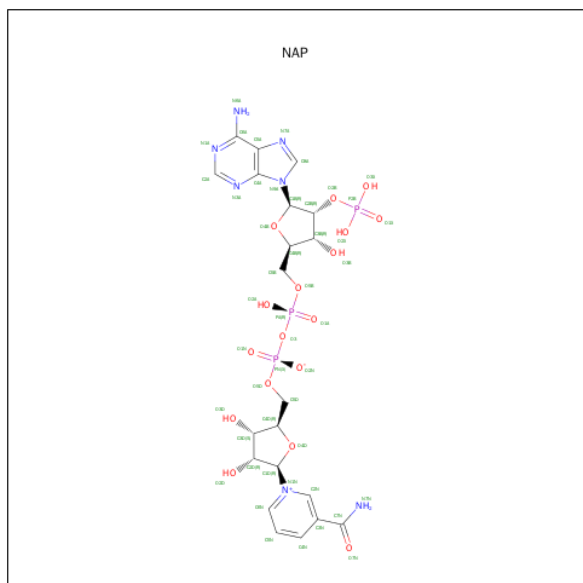
There are 5 unique types of molecules in this entry. The entry contains 11578 atoms, of which 0 are hydrogens and 0 are deuteriums.

In the tables below, the ZeroOcc column contains the number of atoms modelled with zero occupancy, the AltConf column contains the number of residues with at least one atom in alternate conformation and the Trace column contains the number of residues modelled with at most 2 atoms.

- Molecule 1 is a protein called 6-PHOSPHOGLUCONATE DEHYDROGENASE, DECARBOXYLATING.

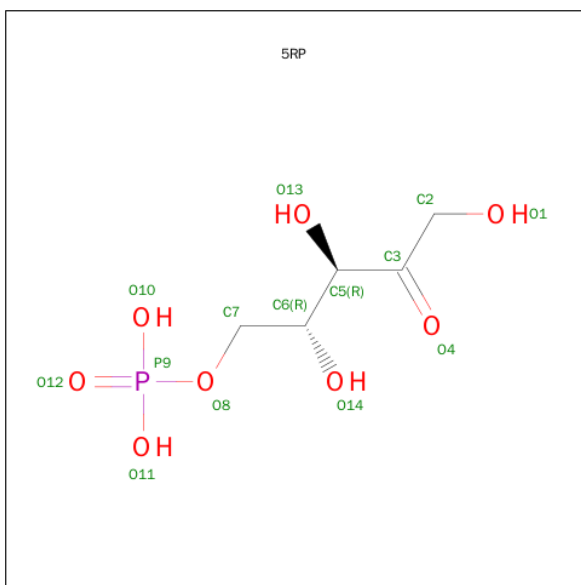
Mol	Chain	Residues	Atoms					ZeroOcc	AltConf	Trace
1	A	470	Total	C	N	O	S	0	1	1
			3676	2340	609	713	14			
1	B	471	Total	C	N	O	S	0	2	1
			3690	2349	612	715	14			
1	C	469	Total	C	N	O	S	0	2	1
			3672	2338	608	713	13			

- Molecule 2 is NADP NICOTINAMIDE-ADENINE-DINUCLEOTIDE PHOSPHATE (three-letter code: NAP) (formula: $C_{21}H_{28}N_7O_{17}P_3$).



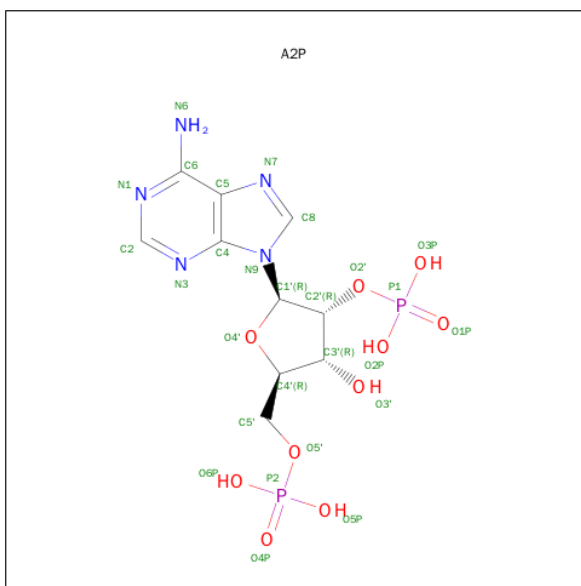
Mol	Chain	Residues	Atoms					ZeroOcc	AltConf
2	A	1	Total	C	N	O	P	0	0
			48	21	7	17	3		

- Molecule 3 is SUGAR (RIBULOSE-5-PHOSPHATE) (three-letter code: 5RP) (formula: $C_5H_{11}O_8P$).



Mol	Chain	Residues	Atoms				ZeroOcc	AltConf
3	A	1	Total	C	O	P	0	0
			14	5	8	1		

- Molecule 4 is ADENOSINE-2'-5'-DIPHOSPHATE (three-letter code: A2P) (formula: $C_{10}H_{15}N_5O_{10}P_2$).



Mol	Chain	Residues	Atoms					ZeroOcc	AltConf
4	B	1	Total	C	N	O	P	0	0
			27	10	5	10	2		
4	C	1	Total	C	N	O	P	0	0
			27	10	5	10	2		

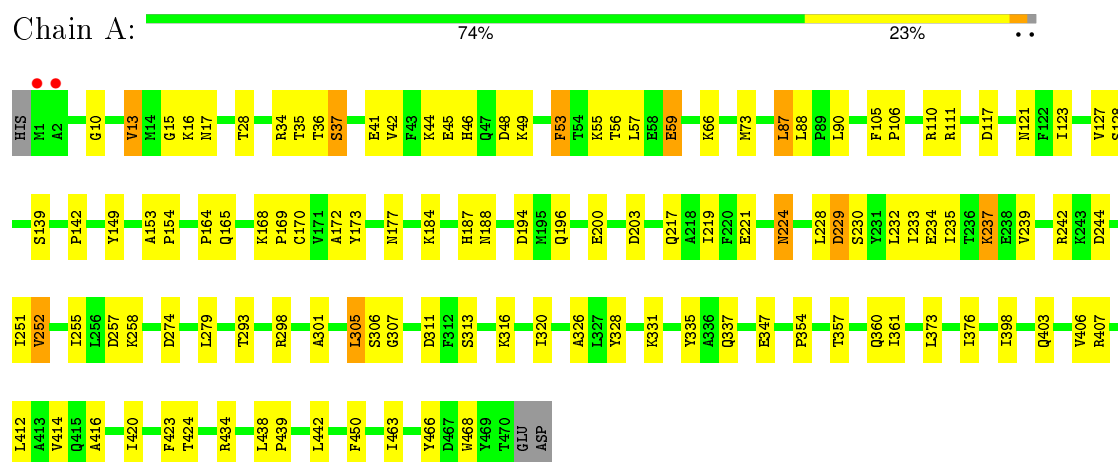
- Molecule 5 is water.

Mol	Chain	Residues	Atoms		ZeroOcc	AltConf
5	A	136	Total 136	O 136	0	0
5	B	136	Total 136	O 136	0	0
5	C	152	Total 152	O 152	0	0

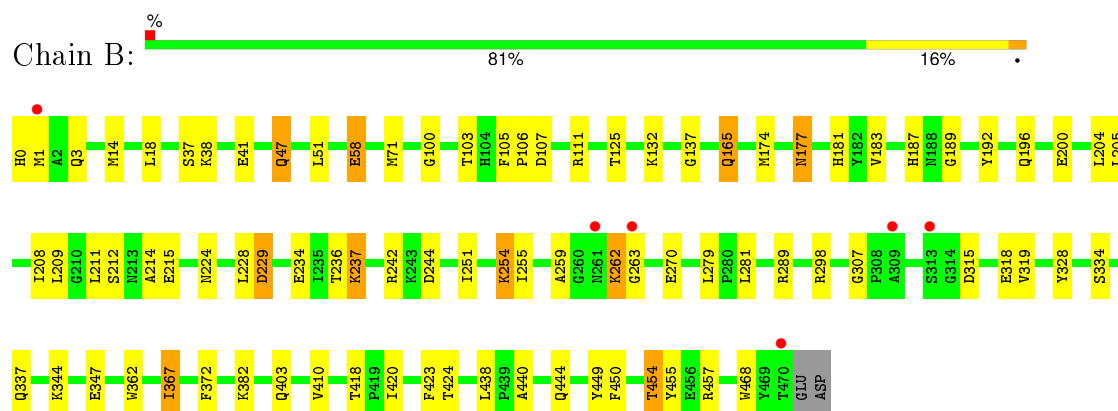
3 Residue-property plots

These plots are drawn for all protein, RNA and DNA chains in the entry. The first graphic for a chain summarises the proportions of errors displayed in the second graphic. The second graphic shows the sequence view annotated by issues in geometry and electron density. Residues are color-coded according to the number of geometric quality criteria for which they contain at least one outlier: green = 0, yellow = 1, orange = 2 and red = 3 or more. A red dot above a residue indicates a poor fit to the electron density ($RSRZ > 2$). Stretches of 2 or more consecutive residues without any outlier are shown as a green connector. Residues present in the sample, but not in the model, are shown in grey.

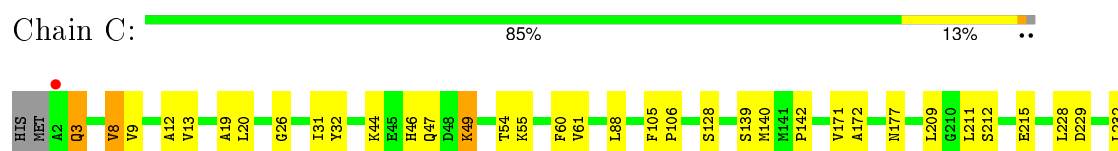
- Molecule 1: 6-PHOSPHOGLUCONATE DEHYDROGENASE, DECARBOXYLATING

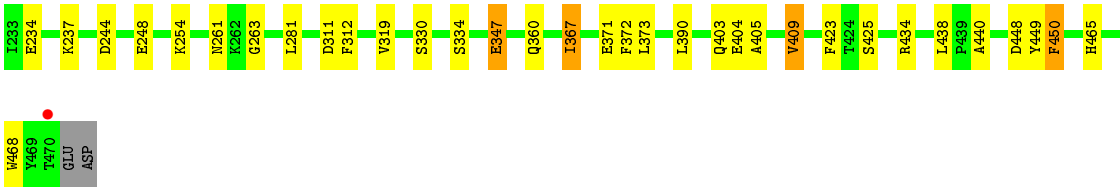


- Molecule 1: 6-PHOSPHOGLUCONATE DEHYDROGENASE, DECARBOXYLATING



- Molecule 1: 6-PHOSPHOGLUCONATE DEHYDROGENASE, DECARBOXYLATING





4 Data and refinement statistics

Property	Value	Source
Space group	C 1 2 1	Depositor
Cell constants a, b, c, α , β , γ	71.06 Å 105.06 Å 240.48 Å 90.00° 98.26° 90.00°	Depositor
Resolution (Å)	29.81 – 2.79 29.81 – 2.79	Depositor EDS
% Data completeness (in resolution range)	93.6 (29.81-2.79) 90.9 (29.81-2.79)	Depositor EDS
R_{merge}	0.08	Depositor
R_{sym}	(Not available)	Depositor
$\langle I/\sigma(I) \rangle$ ¹	2.55 (at 2.80 Å)	Xtriage
Refinement program	REFMAC 5.2.0005	Depositor
R, R_{free}	0.179 , 0.255 0.178 , 0.254	Depositor DCC
R_{free} test set	1979 reflections (5.28%)	DCC
Wilson B-factor (Å ²)	41.9	Xtriage
Anisotropy	0.112	Xtriage
Bulk solvent k_{sol} (e/Å ³), B_{sol} (Å ²)	0.31 , 31.6	EDS
Estimated twinning fraction	0.025 for h,-k,-h-l	Xtriage
L-test for twinning ²	$\langle L \rangle = 0.48$, $\langle L^2 \rangle = 0.31$	Xtriage
Outliers	0 of 39483 reflections	Xtriage
F_o, F_c correlation	0.94	EDS
Total number of atoms	11578	wwPDB-VP
Average B, all atoms (Å ²)	38.0	wwPDB-VP

Xtriage's analysis on translational NCS is as follows: *The largest off-origin peak in the Patterson function is 4.00% of the height of the origin peak. No significant pseudotranslation is detected.*

¹Intensities estimated from amplitudes.

²Theoretical values of $\langle |L| \rangle$, $\langle L^2 \rangle$ for acentric reflections are 0.5, 0.375 respectively for untwinned datasets, and 0.333, 0.2 for perfectly twinned datasets.

5 Model quality

5.1 Standard geometry

Bond lengths and bond angles in the following residue types are not validated in this section: A2P, NAP, 5RP

The Z score for a bond length (or angle) is the number of standard deviations the observed value is removed from the expected value. A bond length (or angle) with $|Z| > 5$ is considered an outlier worth inspection. RMSZ is the root-mean-square of all Z scores of the bond lengths (or angles).

Mol	Chain	Bond lengths		Bond angles	
		RMSZ	# Z >5	RMSZ	# Z >5
1	A	0.55	0/3751	0.64	0/5070
1	B	0.53	0/3769	0.63	0/5094
1	C	0.50	0/3750	0.61	0/5069
All	All	0.53	0/11270	0.63	0/15233

There are no bond length outliers.

There are no bond angle outliers.

There are no chirality outliers.

There are no planarity outliers.

5.2 Too-close contacts

In the following table, the Non-H and H(model) columns list the number of non-hydrogen atoms and hydrogen atoms in the chain respectively. The H(added) column lists the number of hydrogen atoms added and optimized by MolProbity. The Clashes column lists the number of clashes within the asymmetric unit, whereas Symm-Clashes lists symmetry related clashes.

Mol	Chain	Non-H	H(model)	H(added)	Clashes	Symm-Clashes
1	A	3676	0	3631	79	0
1	B	3690	0	3645	58	0
1	C	3672	0	3626	39	0
2	A	48	0	25	3	0
3	A	14	0	9	1	0
4	B	27	0	11	1	0
4	C	27	0	11	0	0
5	A	136	0	0	21	0
5	B	136	0	0	12	0
5	C	152	0	0	10	0
All	All	11578	0	10958	168	0

The all-atom clashscore is defined as the number of clashes found per 1000 atoms (including hydrogen atoms). The all-atom clashscore for this structure is 8.

All (168) close contacts within the same asymmetric unit are listed below, sorted by their clash magnitude.

Atom-1	Atom-2	Interatomic distance (Å)	Clash overlap (Å)
1:B:262:LYS:H	1:B:262:LYS:HD3	1.11	1.13
1:B:262:LYS:H	1:B:262:LYS:CD	1.69	1.03
1:C:8:VAL:HG11	1:C:19:ALA:HB2	1.45	0.94
1:A:311:ASP:HA	5:A:2077:HOH:O	1.72	0.88
1:A:42:VAL:HA	5:A:2007:HOH:O	1.75	0.87
1:B:0:HIS:HB3	5:B:2002:HOH:O	1.80	0.82
2:A:1470:NAP:H4N	5:A:2034:HOH:O	1.78	0.81
1:C:434:ARG:HD2	5:C:2133:HOH:O	1.81	0.80
1:B:262:LYS:N	1:B:262:LYS:HD3	1.95	0.80
5:A:2046:HOH:O	1:C:3:GLN:HB2	1.85	0.74
1:C:448:ASP:OD1	1:C:465:HIS:HD2	1.70	0.73
1:A:45:GLU:HB3	5:A:2007:HOH:O	1.88	0.72
1:C:312:PHE:HA	5:C:2102:HOH:O	1.90	0.70
1:A:252:VAL:C	5:A:2063:HOH:O	2.32	0.68
1:A:360:GLN:HG3	5:A:2047:HOH:O	1.93	0.68
1:A:41:GLU:O	5:A:2007:HOH:O	2.13	0.68
1:B:47:GLN:H	1:B:47:GLN:NE2	1.93	0.67
3:A:1471:5RP:H22	5:A:2034:HOH:O	1.97	0.64
1:A:224:ASN:HD21	1:A:230:SER:H	1.44	0.63
1:C:347:GLU:HB2	5:C:2113:HOH:O	1.98	0.63
1:B:208:ILE:HG22	1:B:209:LEU:HD23	1.80	0.62
1:B:262:LYS:CD	1:B:262:LYS:N	2.51	0.62
1:A:316:LYS:O	1:A:320:ILE:HG13	1.99	0.62
1:A:234:GLU:O	1:A:237:LYS:HD3	2.00	0.61
1:A:420:ILE:HB	1:A:423:PHE:HB2	1.81	0.61
1:A:117:ASP:HB2	5:A:2031:HOH:O	2.01	0.60
1:A:127:VAL:O	2:A:1470:NAP:H5N	2.02	0.60
1:C:360:GLN:HB3	5:C:2120:HOH:O	2.02	0.59
1:B:37:SER:O	1:B:41:GLU:HB2	2.01	0.59
1:A:403:GLN:O	1:A:407:ARG:HG3	2.02	0.59
1:A:242:ARG:O	1:A:251:ILE:HG22	2.03	0.59
1:C:46:HIS:HB3	1:C:49:LYS:HG3	1.84	0.59
1:A:111:ARG:HD3	5:A:2027:HOH:O	2.03	0.58
1:C:142:PRO:HD2	1:C:172:ALA:O	2.02	0.58
1:A:414:VAL:HG21	1:B:410:VAL:HG11	1.85	0.58
1:B:228:LEU:HD23	1:B:328:TYR:HD1	1.68	0.58
1:C:212:SER:OG	1:C:215:GLU:HG3	2.04	0.58

Continued on next page...

Continued from previous page...

Atom-1	Atom-2	Interatomic distance (Å)	Clash overlap (Å)
1:C:47:GLN:HB2	5:C:2011:HOH:O	2.04	0.57
1:C:330:SER:HG	1:C:423:PHE:HD1	1.51	0.57
1:B:165:GLN:HG3	5:B:2103:HOH:O	2.04	0.57
1:B:47:GLN:H	1:B:47:GLN:HE21	1.51	0.57
1:A:57:LEU:HD22	1:A:87:LEU:HD13	1.87	0.57
1:B:100:GLY:HA2	1:B:125:THR:O	2.06	0.56
1:A:53:PHE:HB3	5:A:2012:HOH:O	2.05	0.56
1:B:382:LYS:HD2	5:B:2107:HOH:O	2.06	0.55
1:B:105:PHE:CD1	1:B:106:PRO:HD3	2.41	0.55
1:A:328:TYR:HE2	1:A:398:ILE:HD13	1.70	0.55
1:A:257:ASP:OD2	1:A:298:ARG:NH2	2.40	0.55
1:B:449:TYR:HA	1:B:468:TRP:CD1	2.41	0.54
1:B:58:GLU:HB3	5:B:2018:HOH:O	2.08	0.54
1:A:301:ALA:HB1	1:A:305:LEU:HD22	1.90	0.54
1:A:28:THR:HG23	5:C:2053:HOH:O	2.08	0.53
1:C:261:ASN:ND2	1:C:263:GLY:H	2.06	0.53
1:B:18:LEU:HD21	1:B:71:MET:SD	2.47	0.53
1:B:205:LEU:HB3	1:B:211:LEU:HD12	1.89	0.53
1:C:403:GLN:HG3	1:C:404:GLU:H	1.74	0.53
1:A:196:GLN:HE21	1:A:200:GLU:HG3	1.74	0.53
1:A:416:ALA:HB2	5:A:2115:HOH:O	2.08	0.53
1:C:9:VAL:HG13	1:C:32:TYR:HD2	1.74	0.52
1:A:105:PHE:CD1	1:A:106:PRO:HD3	2.44	0.52
1:C:209:LEU:HD21	1:C:319:VAL:HG11	1.92	0.52
1:C:140:MET:HB2	1:C:171:VAL:HG23	1.91	0.52
1:A:252:VAL:HA	5:A:2063:HOH:O	2.08	0.52
1:B:204:LEU:HD23	1:B:418:THR:HG21	1.91	0.52
1:C:232:LEU:HG	1:C:367:ILE:HD12	1.92	0.52
1:A:73:MET:O	2:A:1470:NAP:H51N	2.10	0.51
5:A:2042:HOH:O	1:C:26:GLY:HA2	2.10	0.51
1:B:244:ASP:OD2	1:B:254:LYS:HG2	2.10	0.51
1:A:424:THR:HB	1:B:424:THR:HB	1.93	0.51
1:A:164:PRO:HD2	1:A:165:GLN:OE1	2.11	0.51
1:C:450:PHE:CD1	1:C:450:PHE:C	2.84	0.51
1:A:373:LEU:HA	1:A:376:ILE:HD12	1.92	0.51
1:A:44:LYS:NZ	5:A:2008:HOH:O	2.39	0.51
1:A:434:ARG:NH1	1:B:307:GLY:HA3	2.26	0.50
1:B:14:MET:HG2	5:B:2039:HOH:O	2.11	0.50
1:C:54:THR:HG21	1:C:60:PHE:HA	1.93	0.50
1:A:46:HIS:HB3	1:A:49:LYS:HG3	1.92	0.50
1:B:107:ASP:O	1:B:111:ARG:HG3	2.11	0.50

Continued on next page...

Continued from previous page...

Atom-1	Atom-2	Interatomic distance (Å)	Clash overlap (Å)
1:A:13:VAL:O	1:A:17:ASN:ND2	2.40	0.50
1:C:105:PHE:CD1	1:C:106:PRO:HD3	2.47	0.50
1:A:35:THR:O	1:A:37:SER:N	2.45	0.50
1:A:354:PRO:HB2	1:A:357:THR:HB	1.94	0.49
1:C:403:GLN:HG3	1:C:404:GLU:N	2.27	0.49
1:A:153:ALA:HB3	1:A:154:PRO:HD3	1.93	0.49
1:C:13:VAL:HG21	5:C:2039:HOH:O	2.13	0.49
1:B:444:GLN:HA	1:B:444:GLN:OE1	2.13	0.49
1:A:434:ARG:CZ	1:B:307:GLY:HA3	2.42	0.49
1:A:328:TYR:CE2	1:A:398:ILE:HD13	2.48	0.48
1:C:47:GLN:CB	5:C:2011:HOH:O	2.61	0.48
1:A:228:LEU:HD23	1:A:328:TYR:HD1	1.79	0.48
1:A:10:GLY:O	1:A:15:GLY:HA3	2.14	0.48
1:B:281:LEU:HD13	1:B:334:SER:HB2	1.95	0.48
1:A:252:VAL:CA	5:A:2063:HOH:O	2.62	0.48
1:A:438:LEU:HB3	1:A:439:PRO:HD2	1.95	0.47
1:B:3:GLN:HG3	5:B:2005:HOH:O	2.13	0.47
1:A:194:ASP:OD1	1:A:331:LYS:HG3	2.13	0.47
1:A:196:GLN:NE2	1:A:200:GLU:HG3	2.29	0.47
1:A:142:PRO:HD2	1:A:172:ALA:O	2.15	0.47
1:A:48:ASP:N	1:A:48:ASP:OD1	2.46	0.47
1:A:412:LEU:HA	5:A:2114:HOH:O	2.14	0.47
1:A:224:ASN:ND2	1:A:230:SER:H	2.09	0.47
1:C:128:SER:HB2	1:C:139:SER:HB3	1.97	0.47
1:B:174:MET:SD	1:B:183:VAL:HG21	2.55	0.47
1:C:12:ALA:HB3	5:C:2002:HOH:O	2.15	0.47
1:A:244:ASP:CG	1:B:457:ARG:HH22	2.18	0.47
1:C:438:LEU:C	1:C:440:ALA:H	2.17	0.47
1:B:47:GLN:N	1:B:47:GLN:NE2	2.62	0.47
1:C:31:ILE:O	1:C:54:THR:OG1	2.31	0.46
1:A:307:GLY:HA2	1:B:403:GLN:OE1	2.15	0.46
1:B:315:ASP:OD2	1:B:318[B]:GLU:HG3	2.15	0.46
1:A:170:CYS:HB3	1:A:361:ILE:O	2.15	0.46
1:A:184:LYS:HE2	1:A:188:ASN:OD1	2.15	0.46
1:A:217:GLN:HG2	1:A:237:LYS:HB2	1.96	0.46
1:A:149:TYR:CE2	1:A:173:TYR:HB2	2.51	0.46
1:B:279:LEU:HD12	1:B:337:GLN:HB3	1.97	0.46
1:B:234:GLU:HG2	1:B:237:LYS:HE3	1.97	0.46
1:B:187:HIS:HB2	1:B:362:TRP:CZ2	2.51	0.46
1:B:0:HIS:N	5:B:2001:HOH:O	2.47	0.46
1:A:66:LYS:NZ	5:A:2015:HOH:O	2.50	0.45

Continued on next page...

Continued from previous page...

Atom-1	Atom-2	Interatomic distance (Å)	Clash overlap (Å)
1:A:16:LYS:HG3	1:A:42:VAL:HG21	1.98	0.45
1:A:450:PHE:CG	1:B:367:ILE:HD11	2.51	0.45
1:B:242:ARG:HD3	5:B:2068:HOH:O	2.15	0.45
1:B:262:LYS:HA	1:B:263:GLY:HA3	1.70	0.45
1:B:259:ALA:HB1	1:B:289:ARG:HD3	1.98	0.45
1:C:281:LEU:HD13	1:C:334:SER:HB2	1.98	0.45
1:C:405:ALA:O	1:C:409:VAL:HG13	2.16	0.45
1:A:258:LYS:HG2	1:A:293:THR:HA	1.99	0.45
1:A:53:PHE:CD1	1:A:53:PHE:C	2.90	0.44
1:B:224:ASN:OD1	1:B:229:ASP:HA	2.17	0.44
1:A:279:LEU:HD12	1:A:337:GLN:HB3	1.99	0.44
1:A:128:SER:HB3	1:A:139:SER:HB3	2.00	0.44
1:A:442:LEU:HD11	1:B:236:THR:HG23	1.98	0.44
1:B:103:THR:HB	1:B:181:HIS:CE1	2.53	0.43
1:C:211:LEU:HD22	1:C:215:GLU:OE2	2.18	0.43
1:A:228:LEU:HB3	1:A:233:ILE:CD1	2.49	0.43
1:A:110:ARG:HD2	5:A:2030:HOH:O	2.18	0.43
1:A:232:LEU:HD23	1:A:235:ILE:HD11	2.00	0.43
1:A:438:LEU:HD12	1:B:298:ARG:CZ	2.49	0.43
1:C:347:GLU:HG3	5:C:2113:HOH:O	2.19	0.43
1:B:420:ILE:HB	1:B:423:PHE:HB2	2.00	0.42
1:A:121:ASN:HA	5:A:2033:HOH:O	2.18	0.42
1:B:270:GLU:HG2	5:B:2077:HOH:O	2.19	0.42
1:A:450:PHE:CD2	1:B:367:ILE:HD11	2.54	0.42
1:B:212:SER:OG	1:B:215:GLU:HG3	2.19	0.42
1:B:438:LEU:C	1:B:440:ALA:H	2.23	0.42
1:A:184:LYS:O	1:A:187:HIS:HB3	2.19	0.42
1:A:331:LYS:O	1:A:335:TYR:HD1	2.03	0.42
1:B:315:ASP:O	1:B:319:VAL:HG23	2.20	0.42
1:C:244:ASP:OD2	1:C:254:LYS:HG3	2.20	0.42
1:A:326:ALA:HA	1:A:406:VAL:HG22	2.01	0.42
1:B:214:ALA:HA	5:B:2059:HOH:O	2.19	0.42
1:C:228:LEU:O	1:C:229:ASP:C	2.58	0.41
1:B:196:GLN:HE21	1:B:200:GLU:HG3	1.84	0.41
1:A:228:LEU:O	1:A:229:ASP:C	2.58	0.41
1:C:229:ASP:HB3	1:C:371:GLU:HB2	2.02	0.41
1:A:168:LYS:HA	1:A:169:PRO:HD3	1.87	0.41
1:C:449:TYR:HA	1:C:468:TRP:CD1	2.56	0.41
1:B:0:HIS:CE1	5:B:2003:HOH:O	2.74	0.41
1:A:235:ILE:O	1:A:239:VAL:HG23	2.21	0.41
1:B:251:ILE:O	1:B:255:ILE:HG13	2.20	0.41

Continued on next page...

Continued from previous page...

Atom-1	Atom-2	Interatomic distance (Å)	Clash overlap (Å)
1:A:55:LYS:HG2	1:A:59:GLU:OE1	2.21	0.41
4:B:1470:A2P:H5'2	5:B:2134:HOH:O	2.21	0.41
1:A:255:ILE:HG23	1:B:455:TYR:HB2	2.03	0.41
1:A:251:ILE:HG23	1:A:252:VAL:N	2.36	0.40
1:B:189:GLY:O	1:B:192:TYR:HB2	2.21	0.40
1:C:450:PHE:HD1	1:C:450:PHE:C	2.24	0.40
1:C:140:MET:HB2	1:C:171:VAL:CG2	2.52	0.40
1:A:466:TYR:O	1:A:468:TRP:CD1	2.74	0.40

There are no symmetry-related clashes.

5.3 Torsion angles

5.3.1 Protein backbone

In the following table, the Percentiles column shows the percent Ramachandran outliers of the chain as a percentile score with respect to all X-ray entries followed by that with respect to entries of similar resolution.

The Analysed column shows the number of residues for which the backbone conformation was analysed, and the total number of residues.

Mol	Chain	Analysed	Favoured	Allowed	Outliers	Percentiles	
1	A	469/473 (99%)	430 (92%)	35 (8%)	4 (1%)	21	55
1	B	471/473 (100%)	448 (95%)	19 (4%)	4 (1%)	24	58
1	C	469/473 (99%)	450 (96%)	18 (4%)	1 (0%)	52	84
All	All	1409/1419 (99%)	1328 (94%)	72 (5%)	9 (1%)	30	65

All (9) Ramachandran outliers are listed below:

Mol	Chain	Res	Type
1	A	36	THR
1	B	229	ASP
1	A	229	ASP
1	B	454	THR
1	A	59	GLU
1	A	177	ASN
1	C	177	ASN
1	B	177	ASN
1	B	137	GLY

5.3.2 Protein sidechains ⓘ

In the following table, the Percentiles column shows the percent sidechain outliers of the chain as a percentile score with respect to all X-ray entries followed by that with respect to entries of similar resolution.

The Analysed column shows the number of residues for which the sidechain conformation was analysed, and the total number of residues.

Mol	Chain	Analysed	Rotameric	Outliers	Percentiles	
1	A	386/389 (99%)	365 (95%)	21 (5%)	27	60
1	B	388/389 (100%)	371 (96%)	17 (4%)	35	69
1	C	386/389 (99%)	365 (95%)	21 (5%)	27	60
All	All	1160/1167 (99%)	1101 (95%)	59 (5%)	30	63

All (59) residues with a non-rotameric sidechain are listed below:

Mol	Chain	Res	Type
1	A	13	VAL
1	A	34	ARG
1	A	37	SER
1	A	53	PHE
1	A	56	THR
1	A	87	LEU
1	A	88	LEU
1	A	90	LEU
1	A	123	ILE
1	A	203	ASP
1	A	219	ILE
1	A	221	GLU
1	A	224	ASN
1	A	237	LYS
1	A	252	VAL
1	A	274	ASP
1	A	305	LEU
1	A	306	SER
1	A	313	SER
1	A	347	GLU
1	A	463	ILE
1	B	1	MET
1	B	38	LYS
1	B	47	GLN
1	B	51	LEU
1	B	58	GLU

Continued on next page...

Continued from previous page...

Mol	Chain	Res	Type
1	B	132	LYS
1	B	165	GLN
1	B	177	ASN
1	B	237	LYS
1	B	254	LYS
1	B	262	LYS
1	B	344	LYS
1	B	347	GLU
1	B	367	ILE
1	B	372	PHE
1	B	450	PHE
1	B	454	THR
1	C	3	GLN
1	C	8	VAL
1	C	20	LEU
1	C	44	LYS
1	C	49	LYS
1	C	55	LYS
1	C	61	VAL
1	C	88	LEU
1	C	234	GLU
1	C	237	LYS
1	C	248	GLU
1	C	311	ASP
1	C	347	GLU
1	C	367	ILE
1	C	372	PHE
1	C	373	LEU
1	C	390	LEU
1	C	409	VAL
1	C	425[A]	SER
1	C	425[B]	SER
1	C	450	PHE

Some sidechains can be flipped to improve hydrogen bonding and reduce clashes. All (15) such sidechains are listed below:

Mol	Chain	Res	Type
1	A	50	ASN
1	A	75	GLN
1	A	158	GLN
1	A	217	GLN
1	A	224	ASN

Continued on next page...

Continued from previous page...

Mol	Chain	Res	Type
1	A	360	GLN
1	A	453	HIS
1	B	0	HIS
1	B	3	GLN
1	B	47	GLN
1	B	102	ASN
1	B	196	GLN
1	C	47	GLN
1	C	261	ASN
1	C	465	HIS

5.3.3 RNA [i](#)

There are no RNA molecules in this entry.

5.4 Non-standard residues in protein, DNA, RNA chains [i](#)

There are no non-standard protein/DNA/RNA residues in this entry.

5.5 Carbohydrates [i](#)

There are no carbohydrates in this entry.

5.6 Ligand geometry [i](#)

4 ligands are modelled in this entry.

In the following table, the Counts columns list the number of bonds (or angles) for which Mogul statistics could be retrieved, the number of bonds (or angles) that are observed in the model and the number of bonds (or angles) that are defined in the chemical component dictionary. The Link column lists molecule types, if any, to which the group is linked. The Z score for a bond length (or angle) is the number of standard deviations the observed value is removed from the expected value. A bond length (or angle) with $|Z| > 2$ is considered an outlier worth inspection. RMSZ is the root-mean-square of all Z scores of the bond lengths (or angles).

Mol	Type	Chain	Res	Link	Bond lengths			Bond angles		
					Counts	RMSZ	$\# Z > 2$	Counts	RMSZ	$\# Z > 2$
2	NAP	A	1470	-	42,52,52	1.74	5 (11%)	54,80,80	1.88	4 (7%)
3	5RP	A	1471	-	13,13,13	1.60	3 (23%)	11,18,18	1.22	1 (9%)
4	A2P	B	1470	-	24,29,29	1.09	2 (8%)	29,45,45	1.80	4 (13%)

Mol	Type	Chain	Res	Link	Bond lengths			Bond angles		
					Counts	RMSZ	# Z > 2	Counts	RMSZ	# Z > 2
4	A2P	C	1470	-	24,29,29	1.05	1 (4%)	29,45,45	1.81	2 (6%)

In the following table, the Chirals column lists the number of chiral outliers, the number of chiral centers analysed, the number of these observed in the model and the number defined in the chemical component dictionary. Similar counts are reported in the Torsion and Rings columns. '-' means no outliers of that kind were identified.

Mol	Type	Chain	Res	Link	Chirals	Torsions	Rings
2	NAP	A	1470	-	-	0/27/67/67	0/5/5/5
3	5RP	A	1471	-	-	0/16/16/16	0/0/0/0
4	A2P	B	1470	-	-	0/11/31/31	0/3/3/3
4	A2P	C	1470	-	-	0/11/31/31	0/3/3/3

All (11) bond length outliers are listed below:

Mol	Chain	Res	Type	Atoms	Z	Observed(Å)	Ideal(Å)
2	A	1470	NAP	C3N-C7N	2.03	1.53	1.50
2	A	1470	NAP	C2N-C3N	2.13	1.42	1.39
4	B	1470	A2P	C2-N3	2.20	1.36	1.32
3	A	1471	5RP	C6-C5	2.67	1.56	1.53
3	A	1471	5RP	P9-O11	2.70	1.64	1.54
2	A	1470	NAP	C2A-N1A	2.92	1.39	1.33
3	A	1471	5RP	P9-O12	2.96	1.60	1.51
4	B	1470	A2P	C5-C4	3.14	1.47	1.40
4	C	1470	A2P	C5-C4	3.25	1.47	1.40
2	A	1470	NAP	C2A-N3A	3.99	1.39	1.32
2	A	1470	NAP	O7N-C7N	8.51	1.42	1.24

All (11) bond angle outliers are listed below:

Mol	Chain	Res	Type	Atoms	Z	Observed(°)	Ideal(°)
2	A	1470	NAP	N3A-C2A-N1A	-10.88	120.56	128.89
4	C	1470	A2P	N3-C2-N1	-7.11	123.45	128.89
4	B	1470	A2P	N3-C2-N1	-6.72	123.75	128.89
4	B	1470	A2P	C4-C5-N7	-2.90	106.81	109.48
2	A	1470	NAP	O7N-C7N-N7N	-2.43	119.18	122.59
4	B	1470	A2P	C5'-C4'-C3'	-2.35	105.88	115.21
4	B	1470	A2P	O2'-P1-O1P	-2.03	102.05	107.11
4	C	1470	A2P	O6P-P2-O5P	2.20	115.75	107.38
3	A	1471	5RP	O10-P9-O8	2.37	113.39	106.56
2	A	1470	NAP	C3N-C7N-N7N	3.16	121.28	117.82
2	A	1470	NAP	O4D-C1D-N1N	3.78	112.28	108.13

There are no chirality outliers.

There are no torsion outliers.

There are no ring outliers.

3 monomers are involved in 5 short contacts:

Mol	Chain	Res	Type	Clashes	Symm-Clashes
2	A	1470	NAP	3	0
3	A	1471	5RP	1	0
4	B	1470	A2P	1	0

5.7 Other polymers [i](#)

There are no such residues in this entry.

5.8 Polymer linkage issues [i](#)

There are no chain breaks in this entry.

6 Fit of model and data [i](#)

6.1 Protein, DNA and RNA chains [i](#)

In the following table, the column labelled ‘#RSRZ> 2’ contains the number (and percentage) of RSRZ outliers, followed by percent RSRZ outliers for the chain as percentile scores relative to all X-ray entries and entries of similar resolution. The OWAB column contains the minimum, median, 95th percentile and maximum values of the occupancy-weighted average B-factor per residue. The column labelled ‘Q< 0.9’ lists the number of (and percentage) of residues with an average occupancy less than 0.9.

Mol	Chain	Analysed	<RSRZ>	#RSRZ>2	OWAB(Å ²)	Q<0.9
1	A	470/473 (99%)	-0.34	2 (0%) 93 90	26, 38, 52, 61	1 (0%)
1	B	471/473 (99%)	-0.39	6 (1%) 79 71	26, 38, 52, 64	0
1	C	469/473 (99%)	-0.41	2 (0%) 93 90	26, 37, 51, 60	0
All	All	1410/1419 (99%)	-0.38	10 (0%) 89 84	26, 38, 52, 64	1 (0%)

All (10) RSRZ outliers are listed below:

Mol	Chain	Res	Type	RSRZ
1	A	1	MET	3.1
1	C	470	THR	3.0
1	A	2	ALA	2.8
1	B	261	ASN	2.7
1	B	309	ALA	2.5
1	B	1	MET	2.2
1	B	470	THR	2.2
1	B	313	SER	2.1
1	C	2	ALA	2.0
1	B	263	GLY	2.0

6.2 Non-standard residues in protein, DNA, RNA chains [i](#)

There are no non-standard protein/DNA/RNA residues in this entry.

6.3 Carbohydrates [i](#)

There are no carbohydrates in this entry.

6.4 Ligands [i](#)

In the following table, the Atoms column lists the number of modelled atoms in the group and the number defined in the chemical component dictionary. LLDF column lists the quality of electron density of the group with respect to its neighbouring residues in protein, DNA or RNA chains. The B-factors column lists the minimum, median, 95th percentile and maximum values of B factors of atoms in the group. The column labelled 'Q< 0.9' lists the number of atoms with occupancy less than 0.9.

Mol	Type	Chain	Res	Atoms	RSCC	RSR	LLDF	B-factors(Å ²)	Q<0.9
4	A2P	B	1470	27/27	0.94	0.13	0.02	52,55,62,62	0
2	NAP	A	1470	48/48	0.94	0.14	-0.39	41,49,62,62	0
4	A2P	C	1470	27/27	0.95	0.12	-0.51	39,43,61,63	0
3	5RP	A	1471	14/14	0.98	0.11	-0.72	39,40,42,42	0

6.5 Other polymers [i](#)

There are no such residues in this entry.