



wwPDB X-ray Structure Validation Summary Report ⓘ

Feb 1, 2016 – 05:38 PM GMT

PDB ID : 4J06
Title : Crystal structure of hcv ns5b polymerase in complex with 2-{[(5-BROMOTH
IOPHEN-2-YL)SULFONYL]AMINO}-4-CHLOROBENZOIC ACID
Authors : Coulombe,R.
Deposited on : 2013-01-30
Resolution : 2.00 Å(reported)

This is a wwPDB X-ray Structure Validation Summary Report for a publicly released PDB entry.
We welcome your comments at validation@mail.wwpdb.org
A user guide is available at
<http://wwpdb.org/validation/2016/XrayValidationReportHelp>
with specific help available everywhere you see the ⓘ symbol.

The following versions of software and data (see [references ⓘ](#)) were used in the production of this report:

MolProbity : 4.02b-467
Mogul : 1.7 (RC4), CSD as536be (2015)
Xtriage (Phenix) : 1.9-1692
EDS : rb-20026688
Percentile statistics : 20151230.v01 (using entries in the PDB archive December 30th 2015)
Refmac : 5.8.0135
CCP4 : 6.5.0
Ideal geometry (proteins) : Engh & Huber (2001)
Ideal geometry (DNA, RNA) : Parkinson et al. (1996)
Validation Pipeline (wwPDB-VP) : trunk26865

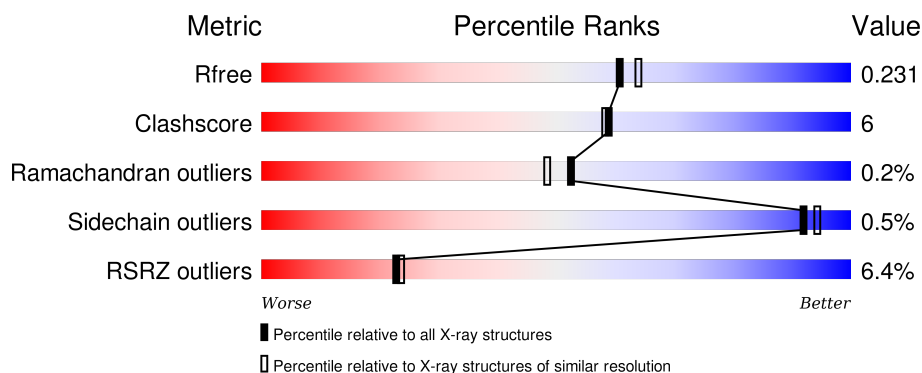
1 Overall quality at a glance

The following experimental techniques were used to determine the structure:

X-RAY DIFFRACTION

The reported resolution of this entry is 2.00 Å.

Percentile scores (ranging between 0-100) for global validation metrics of the entry are shown in the following graphic. The table shows the number of entries on which the scores are based.



Metric	Whole archive (#Entries)	Similar resolution (#Entries, resolution range(Å))
R_{free}	91344	6249 (2.00-2.00)
Clashscore	102246	7340 (2.00-2.00)
Ramachandran outliers	100387	7248 (2.00-2.00)
Sidechain outliers	100360	7247 (2.00-2.00)
RSRZ outliers	91569	6262 (2.00-2.00)

The table below summarises the geometric issues observed across the polymeric chains and their fit to the electron density. The red, orange, yellow and green segments on the lower bar indicate the fraction of residues that contain outliers for ≥ 3 , 2, 1 and 0 types of geometric quality criteria. A grey segment represents the fraction of residues that are not modelled. The numeric value for each fraction is indicated below the corresponding segment, with a dot representing fractions $\leq 5\%$. The upper red bar (where present) indicates the fraction of residues that have poor fit to the electron density. The numeric value is given above the bar.

Mol	Chain	Length	Quality of chain
1	A	576	<div> <div>3%</div> <div>86%</div> <div>11%</div> <div>••</div> </div>
1	B	576	<div> <div>9%</div> <div>80%</div> <div>16%</div> <div>•</div> </div>

2 Entry composition

There are 3 unique types of molecules in this entry. The entry contains 9285 atoms, of which 0 are hydrogens and 0 are deuteriums.

In the tables below, the ZeroOcc column contains the number of atoms modelled with zero occupancy, the AltConf column contains the number of residues with at least one atom in alternate conformation and the Trace column contains the number of residues modelled with at most 2 atoms.

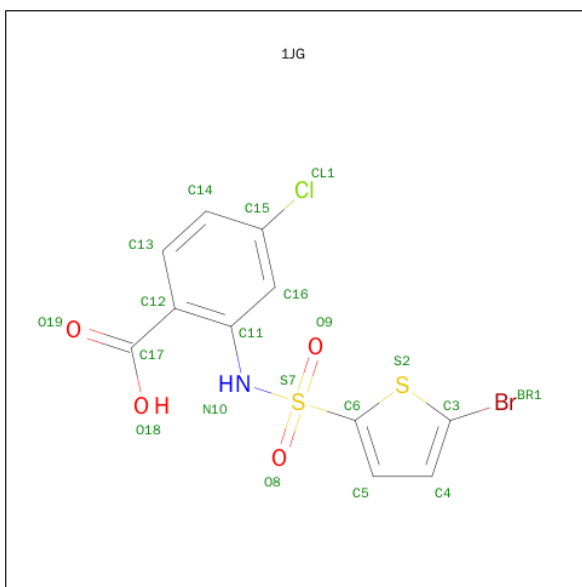
- Molecule 1 is a protein called Genome polyprotein.

Mol	Chain	Residues	Atoms					ZeroOcc	AltConf	Trace
1	A	559	Total	C	N	O	S	0	0	0
			4358	2745	770	811	32			
1	B	558	Total	C	N	O	S	0	0	0
			4346	2737	768	809	32			

There are 12 discrepancies between the modelled and reference sequences:

Chain	Residue	Modelled	Actual	Comment	Reference
A	571	HIS	-	EXPRESSION TAG	UNP O92972
A	572	HIS	-	EXPRESSION TAG	UNP O92972
A	573	HIS	-	EXPRESSION TAG	UNP O92972
A	574	HIS	-	EXPRESSION TAG	UNP O92972
A	575	HIS	-	EXPRESSION TAG	UNP O92972
A	576	HIS	-	EXPRESSION TAG	UNP O92972
B	571	HIS	-	EXPRESSION TAG	UNP O92972
B	572	HIS	-	EXPRESSION TAG	UNP O92972
B	573	HIS	-	EXPRESSION TAG	UNP O92972
B	574	HIS	-	EXPRESSION TAG	UNP O92972
B	575	HIS	-	EXPRESSION TAG	UNP O92972
B	576	HIS	-	EXPRESSION TAG	UNP O92972

- Molecule 2 is 2-{{(5-BROMOTHIOPHEN-2-YL)SULFONYL]AMINO}-4-CHLOROBENZOIC ACID (three-letter code: 1JG) (formula: C₁₁H₇BrClNO₄S₂).

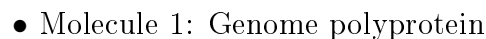


Mol	Chain	Residues	Atoms							ZeroOcc	AltConf
2	A	1	Total	Br	C	Cl	N	O	S	0	0
			20	1	11	1	1	4	2		
2	B	1	Total	Br	C	Cl	N	O	S	0	0
			20	1	11	1	1	4	2		

- Molecule 3 is water.

Mol	Chain	Residues	Atoms		ZeroOcc	AltConf
3	A	315	Total	O	0	0
			315	315		
3	B	226	Total	O	0	0
			226	226		

- Molecule 1: Genome polyprotein



4 Data and refinement statistics

Property	Value	Source
Space group	P 21 21 21	Depositor
Cell constants a, b, c, α , β , γ	106.50Å 108.01Å 133.54Å 90.00° 90.00° 90.00°	Depositor
Resolution (Å)	40.00 – 2.00 39.06 – 2.01	Depositor EDS
% Data completeness (in resolution range)	(Not available) (40.00-2.00) 88.7 (39.06-2.01)	Depositor EDS
R_{merge}	0.08	Depositor
R_{sym}	(Not available)	Depositor
$\langle I/\sigma(I) \rangle$ ¹	3.61 (at 2.01Å)	Xtriage
Refinement program	cnx 2002	Depositor
R, R_{free}	0.208 , 0.235 0.205 , 0.231	Depositor DCC
R_{free} test set	9163 reflections (11.11%)	DCC
Wilson B-factor (Å ²)	29.1	Xtriage
Anisotropy	0.347	Xtriage
Bulk solvent k_{sol} (e/Å ³), B_{sol} (Å ²)	0.34 , 49.7	EDS
Estimated twinning fraction	0.014 for k,h,-l	Xtriage
L-test for twinning ²	$\langle L \rangle = 0.49$, $\langle L^2 \rangle = 0.33$	Xtriage
Outliers	0 of 91646 reflections	Xtriage
F_o, F_c correlation	0.95	EDS
Total number of atoms	9285	wwPDB-VP
Average B, all atoms (Å ²)	33.0	wwPDB-VP

Xtriage's analysis on translational NCS is as follows: *The largest off-origin peak in the Patterson function is 3.49% of the height of the origin peak. No significant pseudotranslation is detected.*

¹ Intensities estimated from amplitudes.

² Theoretical values of $\langle |L| \rangle$, $\langle L^2 \rangle$ for acentric reflections are 0.5, 0.375 respectively for untwinned datasets, and 0.333, 0.2 for perfectly twinned datasets.

5 Model quality [i](#)

5.1 Standard geometry [i](#)

Bond lengths and bond angles in the following residue types are not validated in this section: 1JG

The Z score for a bond length (or angle) is the number of standard deviations the observed value is removed from the expected value. A bond length (or angle) with $|Z| > 5$ is considered an outlier worth inspection. RMSZ is the root-mean-square of all Z scores of the bond lengths (or angles).

Mol	Chain	Bond lengths		Bond angles	
		RMSZ	# Z >5	RMSZ	# Z >5
1	A	0.29	0/4453	0.58	0/6044
1	B	0.27	0/4440	0.56	0/6025
All	All	0.28	0/8893	0.57	0/12069

There are no bond length outliers.

There are no bond angle outliers.

There are no chirality outliers.

There are no planarity outliers.

5.2 Too-close contacts [i](#)

In the following table, the Non-H and H(model) columns list the number of non-hydrogen atoms and hydrogen atoms in the chain respectively. The H(added) column lists the number of hydrogen atoms added and optimized by MolProbity. The Clashes column lists the number of clashes within the asymmetric unit, whereas Symm-Clashes lists symmetry related clashes.

Mol	Chain	Non-H	H(model)	H(added)	Clashes	Symm-Clashes
1	A	4358	0	4371	40	0
1	B	4346	0	4359	63	0
2	A	20	0	6	0	0
2	B	20	0	6	0	0
3	A	315	0	0	3	0
3	B	226	0	0	4	0
All	All	9285	0	8742	102	0

The all-atom clashscore is defined as the number of clashes found per 1000 atoms (including hydrogen atoms). The all-atom clashscore for this structure is 6.

The worst 5 of 102 close contacts within the same asymmetric unit are listed below, sorted by

their clash magnitude.

Atom-1	Atom-2	Interatomic distance (Å)	Clash overlap (Å)
1:B:313:MET:HG2	1:B:322:VAL:HG22	1.55	0.87
1:A:313:MET:HG2	1:A:322:VAL:HG22	1.67	0.76
1:B:337:ARG:O	1:B:341:GLU:HG3	1.86	0.75
1:B:106:LYS:NZ	1:B:110:ASN:HD21	1.93	0.67
1:B:515:GLY:HA2	1:B:519:ALA:HB2	1.79	0.65

There are no symmetry-related clashes.

5.3 Torsion angles [i](#)

5.3.1 Protein backbone [i](#)

In the following table, the Percentiles column shows the percent Ramachandran outliers of the chain as a percentile score with respect to all X-ray entries followed by that with respect to entries of similar resolution.

The Analysed column shows the number of residues for which the backbone conformation was analysed, and the total number of residues.

Mol	Chain	Analysed	Favoured	Allowed	Outliers	Percentiles	
1	A	555/576 (96%)	546 (98%)	8 (1%)	1 (0%)	52	48
1	B	554/576 (96%)	538 (97%)	15 (3%)	1 (0%)	52	48
All	All	1109/1152 (96%)	1084 (98%)	23 (2%)	2 (0%)	52	48

All (2) Ramachandran outliers are listed below:

Mol	Chain	Res	Type
1	B	154	ARG
1	A	544	GLN

5.3.2 Protein sidechains [i](#)

In the following table, the Percentiles column shows the percent sidechain outliers of the chain as a percentile score with respect to all X-ray entries followed by that with respect to entries of similar resolution.

The Analysed column shows the number of residues for which the sidechain conformation was analysed, and the total number of residues.

Mol	Chain	Analysed	Rotameric	Outliers	Percentiles	
1	A	477/491 (97%)	474 (99%)	3 (1%)	90	93
1	B	475/491 (97%)	473 (100%)	2 (0%)	93	95
All	All	952/982 (97%)	947 (100%)	5 (0%)	92	94

All (5) residues with a non-rotameric sidechain are listed below:

Mol	Chain	Res	Type
1	A	106	LYS
1	A	184	GLN
1	A	336	LEU
1	B	273	ASN
1	B	531	ARG

Some sidechains can be flipped to improve hydrogen bonding and reduce clashes. 5 of 14 such sidechains are listed below:

Mol	Chain	Res	Type
1	B	33	HIS
1	B	110	ASN
1	B	406	ASN
1	A	562	HIS
1	B	309	GLN

5.3.3 RNA ⓘ

There are no RNA molecules in this entry.

5.4 Non-standard residues in protein, DNA, RNA chains ⓘ

There are no non-standard protein/DNA/RNA residues in this entry.

5.5 Carbohydrates ⓘ

There are no carbohydrates in this entry.

5.6 Ligand geometry ⓘ

2 ligands are modelled in this entry.

In the following table, the Counts columns list the number of bonds (or angles) for which Mogul statistics could be retrieved, the number of bonds (or angles) that are observed in the model and the number of bonds (or angles) that are defined in the chemical component dictionary. The Link column lists molecule types, if any, to which the group is linked. The Z score for a bond length (or angle) is the number of standard deviations the observed value is removed from the expected value. A bond length (or angle) with $|Z| > 2$ is considered an outlier worth inspection. RMSZ is the root-mean-square of all Z scores of the bond lengths (or angles).

Mol	Type	Chain	Res	Link	Bond lengths			Bond angles		
					Counts	RMSZ	# $ Z > 2$	Counts	RMSZ	# $ Z > 2$
2	1JG	A	601	-	16,21,21	2.32	8 (50%)	18,31,31	1.56	2 (11%)
2	1JG	B	601	-	16,21,21	2.17	9 (56%)	18,31,31	1.56	2 (11%)

In the following table, the Chirals column lists the number of chiral outliers, the number of chiral centers analysed, the number of these observed in the model and the number defined in the chemical component dictionary. Similar counts are reported in the Torsion and Rings columns. '-' means no outliers of that kind were identified.

Mol	Type	Chain	Res	Link	Chirals	Torsions	Rings
2	1JG	A	601	-	-	0/5/15/15	0/2/2/2
2	1JG	B	601	-	-	0/5/15/15	0/2/2/2

The worst 5 of 17 bond length outliers are listed below:

Mol	Chain	Res	Type	Atoms	Z	Observed(Å)	Ideal(Å)
2	B	601	1JG	C14-C15	2.02	1.41	1.38
2	B	601	1JG	O8-S7	2.10	1.45	1.43
2	B	601	1JG	C16-C15	2.13	1.41	1.38
2	A	601	1JG	C14-C15	2.16	1.42	1.38
2	B	601	1JG	C13-C14	2.22	1.42	1.38

All (4) bond angle outliers are listed below:

Mol	Chain	Res	Type	Atoms	Z	Observed(°)	Ideal(°)
2	A	601	1JG	C16-C11-N10	-2.03	116.09	120.50
2	B	601	1JG	O8-S7-C6	-2.00	104.33	107.63
2	A	601	1JG	C6-S7-N10	4.44	112.14	107.25
2	B	601	1JG	C6-S7-N10	4.50	112.21	107.25

There are no chirality outliers.

There are no torsion outliers.

There are no ring outliers.

No monomer is involved in short contacts.

5.7 Other polymers [i](#)

There are no such residues in this entry.

5.8 Polymer linkage issues [i](#)

There are no chain breaks in this entry.

6 Fit of model and data [i](#)

6.1 Protein, DNA and RNA chains [i](#)

In the following table, the column labelled ‘#RSRZ> 2’ contains the number (and percentage) of RSRZ outliers, followed by percent RSRZ outliers for the chain as percentile scores relative to all X-ray entries and entries of similar resolution. The OWAB column contains the minimum, median, 95th percentile and maximum values of the occupancy-weighted average B-factor per residue. The column labelled ‘Q< 0.9’ lists the number of (and percentage) of residues with an average occupancy less than 0.9.

Mol	Chain	Analysed	<RSRZ>	#RSRZ>2		OWAB(Å ²)	Q<0.9
1	A	559/576 (97%)	0.08	19 (3%)	49 50	17, 28, 51, 80	0
1	B	558/576 (96%)	0.46	52 (9%)	11 11	18, 34, 63, 83	0
All	All	1117/1152 (96%)	0.27	71 (6%)	23 24	17, 31, 57, 83	0

The worst 5 of 71 RSRZ outliers are listed below:

Mol	Chain	Res	Type	RSRZ
1	B	23	ILE	8.1
1	B	153	GLY	6.8
1	B	26	LEU	6.4
1	B	24	ASN	6.3
1	B	548	SER	6.0

6.2 Non-standard residues in protein, DNA, RNA chains [i](#)

There are no non-standard protein/DNA/RNA residues in this entry.

6.3 Carbohydrates [i](#)

There are no carbohydrates in this entry.

6.4 Ligands [i](#)

In the following table, the Atoms column lists the number of modelled atoms in the group and the number defined in the chemical component dictionary. LLDF column lists the quality of electron density of the group with respect to its neighbouring residues in protein, DNA or RNA chains. The B-factors column lists the minimum, median, 95th percentile and maximum values of B factors of atoms in the group. The column labelled ‘Q< 0.9’ lists the number of atoms with occupancy less than 0.9.

Mol	Type	Chain	Res	Atoms	RSCC	RSR	LLDF	B-factors(\AA^2)	Q<0.9
2	1JG	B	601	20/20	0.96	0.11	-0.60	44,46,47,50	0
2	1JG	A	601	20/20	0.98	0.09	-1.17	29,34,39,40	0

6.5 Other polymers [i](#)

There are no such residues in this entry.